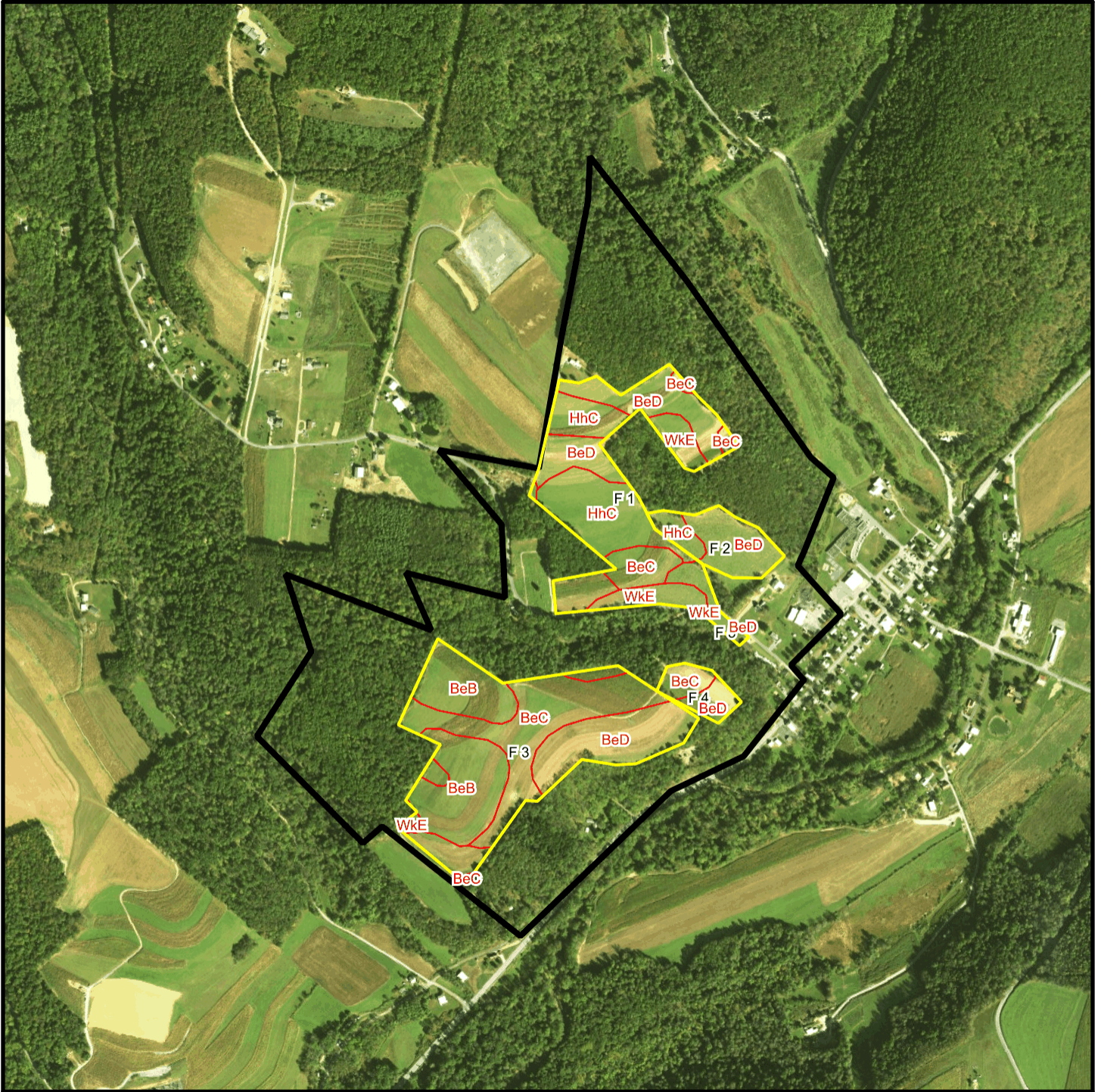
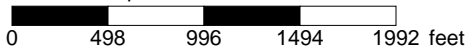


Koons T 1022 Soil Map



* 996.0 feet per inch



Soil Acreages By Field

Field	Label	Musym	Muname	Comp	%	Acres	Drainage Class	Farmland Class	Tfact	Kfact
F 1	F 1	BeC	Berks channery silt loam, 8 to 15 percent slopes	Berks	100	3.25	Well drained	Farmland of statewide importance	3	0.32
F 1	F 1	BeD	Berks channery silt loam, 15 to 25 percent slopes	Berks	100	9.35	Well drained	Not prime farmland	3	0.32
F 1	F 1	HhC	Hartleton channery silt loam, 8 to 15 percent slopes	Hartleton	90	12.25	Well drained	Farmland of statewide importance	3	0.24
F 1	F 1	WkE	Weikert and Klinesville shaly silt loams, 25 to 80 percent slopes	Weikert	55	2.59	Somewhat excessively drained	Not prime farmland	2	0.32
F 1	F 1	WkE	Weikert and Klinesville shaly silt loams, 25 to 80 percent slopes	Klinesville	35	1.65	Somewhat excessively drained	Not prime farmland	2	0.28
F 2	F 2	BeD	Berks channery silt loam, 15 to 25 percent slopes	Berks	100	4.65	Well drained	Not prime farmland	3	0.32
F 2	F 2	HhC	Hartleton channery silt loam, 8 to 15 percent slopes	Hartleton	90	1.45	Well drained	Farmland of statewide importance	3	0.24
F 3	F 3	BeB	Berks channery silt loam, 3 to 8 percent slopes	Berks	100	13.74	Well drained	Farmland of statewide importance	3	0.32
F 3	F 3	BeC	Berks channery silt loam, 8 to 15 percent slopes	Berks	100	13.14	Well drained	Farmland of statewide importance	3	0.32
F 3	F 3	BeD	Berks channery silt loam, 15 to 25 percent slopes	Berks	100	10.56	Well drained	Not prime farmland	3	0.32
F 3	F 3	WkE	Weikert and Klinesville shaly silt loams, 25 to 80 percent slopes	Weikert	55	0.21	Somewhat excessively drained	Not prime farmland	2	0.32
F 3	F 3	WkE	Weikert and Klinesville shaly silt loams, 25 to 80 percent slopes	Klinesville	35	0.14	Somewhat excessively drained	Not prime farmland	2	0.28

Field	Label	Musym	Muname	Comp	%	Acres	Drainage Class	Farmland Class	Tfact	Kfact
F 4	F 4	BeC	Berks channery silt loam, 8 to 15 percent slopes	Berks	100	1.58	Well drained	Farmland of statewide importance	3	0.32
F 4	F 4	BeD	Berks channery silt loam, 15 to 25 percent slopes	Berks	100	1.53	Well drained	Not prime farmland	3	0.32
F 5	F 5	BeD	Berks channery silt loam, 15 to 25 percent slopes	Berks	100	0.61	Well drained	Not prime farmland	3	0.32
F 5	F 5	WkE	Weikert and Klinesville shaly silt loams, 25 to 80 percent slopes	Weikert	55	0.04	Somewhat excessively drained	Not prime farmland	2	0.32
F 5	F 5	WkE	Weikert and Klinesville shaly silt loams, 25 to 80 percent slopes	Klinesville	35	0.02	Somewhat excessively drained	Not prime farmland	2	0.28

Soil Acreages For Farm

Musym	Muname	Comp	%	Acres	Drainage Class	Farmland Class	Tfact	Kfact
BeC	Berks channery silt loam, 8 to 15 percent slopes	Berks	100	17.97	Well drained	Farmland of statewide importance	3	0.32
BeD	Berks channery silt loam, 15 to 25 percent slopes	Berks	100	26.7	Well drained	Not prime farmland	3	0.32
HhC	Hartleton channery silt loam, 8 to 15 percent slopes	Hartleton	90	13.7	Well drained	Farmland of statewide importance	3	0.24
WkE	Weikert and Klinesville shaly silt loams, 25 to 80 percent slopes	Weikert	55	2.84	Somewhat excessively drained	Not prime farmland	2	0.32
WkE	Weikert and Klinesville shaly silt loams, 25 to 80 percent slopes	Klinesville	35	1.81	Somewhat excessively drained	Not prime farmland	2	0.28
BeB	Berks channery silt loam, 3 to 8 percent slopes	Berks	100	13.74	Well drained	Farmland of statewide importance	3	0.32