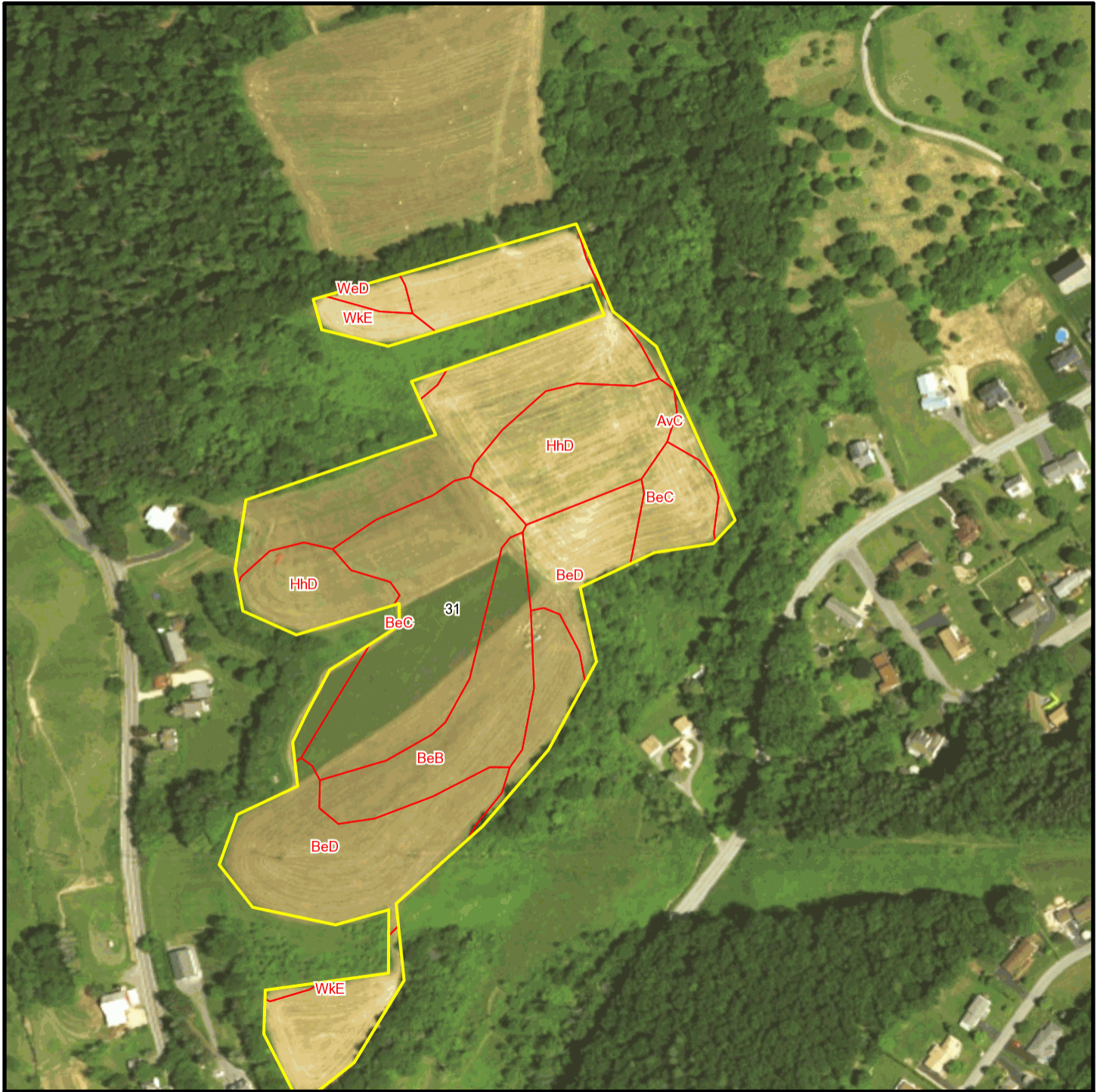
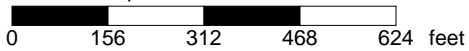


London T 3434 Soil Map



* 312.0 feet per inch



Soil Acreages By Field

Field	Label	Musym	Muname	Comp	%	Acres	Drainage Class	Farmland Class	Tfact	Kfact
31	31	AvC	Alvira silt loam, 8 to 15 percent slopes	Alvira	80	0.19	Somewhat poorly drained	Farmland of statewide importance	3	0.32
31	31	BeB	Berks channery silt loam, 3 to 8 percent slopes	Berks	100	2.11	Well drained	Farmland of statewide importance	3	0.32
31	31	BeC	Berks channery silt loam, 8 to 15 percent slopes	Berks	100	4.2	Well drained	Farmland of statewide importance	3	0.32
31	31	BeD	Berks channery silt loam, 15 to 25 percent slopes	Berks	100	8.28	Well drained	Not prime farmland	3	0.32
31	31	HhD	Hartleton channery silt loam, 15 to 25 percent slopes	Hartleton	90	3.23	Well drained	Not prime farmland	3	0.24
31	31	WeD	Weikert shaly silt loam, 15 to 25 percent slopes	Weikert	85	0.19	Somewhat excessively drained	Not prime farmland	2	0.32
31	31	WkE	Weikert and Klinesville shaly silt loams, 25 to 80 percent slopes	Weikert	55	1.45	Somewhat excessively drained	Not prime farmland	2	0.32
31	31	WkE	Weikert and Klinesville shaly silt loams, 25 to 80 percent slopes	Klinesville	35	0.92	Somewhat excessively drained	Not prime farmland	2	0.28

Soil Acreages For Farm

Musym	Muname	Comp	%	Acres	Drainage Class	Farmland Class	Tfact	Kfact
AvC	Alvira silt loam, 8 to 15 percent slopes	Alvira	80	0.19	Somewhat poorly drained	Farmland of statewide importance	3	0.32
BeB	Berks channery silt loam, 3 to 8 percent slopes	Berks	100	2.11	Well drained	Farmland of statewide importance	3	0.32

Musym	Muname	Comp	%	Acres	Drainage Class	Farmland Class	Tfact	Kfact
BeC	Berks channery silt loam, 8 to 15 percent slopes	Berks	100	4.2	Well drained	Farmland of statewide importance	3	0.32
BeD	Berks channery silt loam, 15 to 25 percent slopes	Berks	100	8.28	Well drained	Not prime farmland	3	0.32
HhD	Hartleton channery silt loam, 15 to 25 percent slopes	Hartleton	90	3.23	Well drained	Not prime farmland	3	0.24
WeD	Weikert shaly silt loam, 15 to 25 percent slopes	Weikert	85	0.19	Somewhat excessively drained	Not prime farmland	2	0.32
WkE	Weikert and Klinesville shaly silt loams, 25 to 80 percent slopes	Weikert	55	1.45	Somewhat excessively drained	Not prime farmland	2	0.32
WkE	Weikert and Klinesville shaly silt loams, 25 to 80 percent slopes	Klinesville	35	0.92	Somewhat excessively drained	Not prime farmland	2	0.28