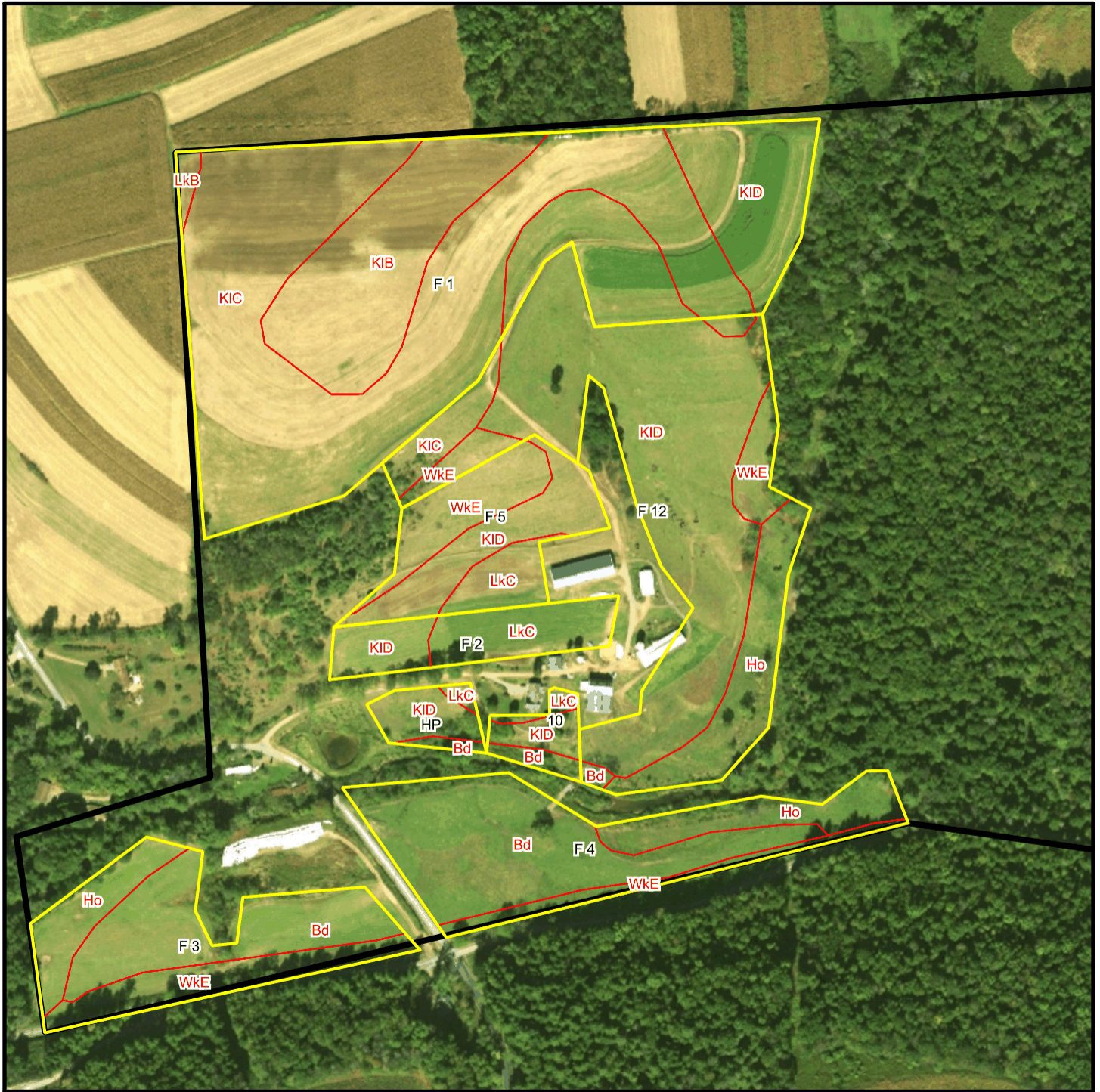
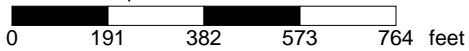


McCoy T 1625 Soil Map



* 382.0 feet per inch



Soil Acreages By Field

Field	Label	Musym	Muname	Comp	%	Acres	Drainage Class	Farmland Class	Tfact	Kfact
10	10	Bd	Basher silt loam, occasionally flooded	Basher	90	0.26	Moderately well drained	All areas are prime farmland	5	0.32
10	10	KID	Klinesville shaly silt loam, 15 to 25 percent slopes	Klinesville	100	0.45	Somewhat excessively drained	Not prime farmland	2	0.28
10	10	LkC	Leck kill channery silt loam, 8 to 15 percent slopes	Leck Kill	90	0.16	Well drained	Farmland of statewide importance	4	0.32
F 1	F 1	KIB	Klinesville shaly silt loam, 3 to 8 percent slopes	Klinesville	90	4.82	Somewhat excessively drained	Farmland of statewide importance	2	0.28
F 1	F 1	KIC	Klinesville shaly silt loam, 8 to 15 percent slopes	Klinesville	90	14.69	Somewhat excessively drained	Not prime farmland	2	0.28
F 1	F 1	KID	Klinesville shaly silt loam, 15 to 25 percent slopes	Klinesville	100	5.14	Somewhat excessively drained	Not prime farmland	2	0.28
F 1	F 1	LkB	Leck kill channery silt loam, 3 to 8 percent slopes	Leck Kill	85	0.19	Well drained	All areas are prime farmland	4	0.32
F 12	F 12	Bd	Basher silt loam, occasionally flooded	Basher	90	0.1	Moderately well drained	All areas are prime farmland	5	0.32
F 12	F 12	Ho	Holly silt loam	Holly	100	2.26	Very poorly drained	Not prime farmland	5	0.28
F 12	F 12	KIC	Klinesville shaly silt loam, 8 to 15 percent slopes	Klinesville	90	0.95	Somewhat excessively drained	Not prime farmland	2	0.28
F 12	F 12	KID	Klinesville shaly silt loam, 15 to 25 percent slopes	Klinesville	100	10.08	Somewhat excessively drained	Not prime farmland	2	0.28
F 12	F 12	WkE	Weikert and Klinesville shaly silt loams, 25 to 80 percent slopes	Weikert	55	0.69	Somewhat excessively drained	Not prime farmland	2	0.32
F 12	F 12	WkE	Weikert and Klinesville shaly silt loams, 25 to 80 percent slopes	Klinesville	35	0.44	Somewhat excessively drained	Not prime farmland	2	0.28

Field	Label	Musym	Muname	Comp	%	Acres	Drainage Class	Farmland Class	Tfact	Kfact
F 2	F 2	KID	Klinesville shaly silt loam, 15 to 25 percent slopes	Klinesville	100	0.82	Somewhat excessively drained	Not prime farmland	2	0.28
F 2	F 2	LkC	Leck kill channery silt loam, 8 to 15 percent slopes	Leck Kill	90	1.46	Well drained	Farmland of statewide importance	4	0.32
F 3	F 3	Bd	Basher silt loam, occasionally flooded	Basher	90	3.25	Moderately well drained	All areas are prime farmland	5	0.32
F 3	F 3	Ho	Holly silt loam	Holly	100	1.27	Very poorly drained	Not prime farmland	5	0.28
F 3	F 3	WkE	Weikert and Klinesville shaly silt loams, 25 to 80 percent slopes	Weikert	55	1.02	Somewhat excessively drained	Not prime farmland	2	0.32
F 3	F 3	WkE	Weikert and Klinesville shaly silt loams, 25 to 80 percent slopes	Klinesville	35	0.65	Somewhat excessively drained	Not prime farmland	2	0.28
F 4	F 4	Bd	Basher silt loam, occasionally flooded	Basher	90	5.07	Moderately well drained	All areas are prime farmland	5	0.32
F 4	F 4	Ho	Holly silt loam	Holly	100	1.57	Very poorly drained	Not prime farmland	5	0.28
F 4	F 4	WkE	Weikert and Klinesville shaly silt loams, 25 to 80 percent slopes	Weikert	55	0.44	Somewhat excessively drained	Not prime farmland	2	0.32
F 4	F 4	WkE	Weikert and Klinesville shaly silt loams, 25 to 80 percent slopes	Klinesville	35	0.28	Somewhat excessively drained	Not prime farmland	2	0.28
F 5	F 5	KID	Klinesville shaly silt loam, 15 to 25 percent slopes	Klinesville	100	1.87	Somewhat excessively drained	Not prime farmland	2	0.28
F 5	F 5	LkC	Leck kill channery silt loam, 8 to 15 percent slopes	Leck Kill	90	0.83	Well drained	Farmland of statewide importance	4	0.32
F 5	F 5	WkE	Weikert and Klinesville shaly silt loams, 25 to 80 percent slopes	Weikert	55	0.93	Somewhat excessively drained	Not prime farmland	2	0.32

Field	Label	Musym	Muname	Comp	%	Acres	Drainage Class	Farmland Class	Tfact	Kfact
F 5	F 5	WkE	Weikert and Klinesville shaly silt loams, 25 to 80 percent slopes	Klinesville	35	0.59	Somewhat excessively drained	Not prime farmland	2	0.28
HP	HP	Bd	Basher silt loam, occasionally flooded	Basher	90	0.13	Moderately well drained	All areas are prime farmland	5	0.32
HP	HP	KID	Klinesville shaly silt loam, 15 to 25 percent slopes	Klinesville	100	0.73	Somewhat excessively drained	Not prime farmland	2	0.28
HP	HP	LkC	Leck kill channery silt loam, 8 to 15 percent slopes	Leck Kill	90	0.1	Well drained	Farmland of statewide importance	4	0.32

Soil Acreages For Farm

Musym	Muname	Comp	%	Acres	Drainage Class	Farmland Class	Tfact	Kfact
KIB	Klinesville shaly silt loam, 3 to 8 percent slopes	Klinesville	90	4.82	Somewhat excessively drained	Farmland of statewide importance	2	0.28
KIC	Klinesville shaly silt loam, 8 to 15 percent slopes	Klinesville	90	15.64	Somewhat excessively drained	Not prime farmland	2	0.28
KID	Klinesville shaly silt loam, 15 to 25 percent slopes	Klinesville	100	19.09	Somewhat excessively drained	Not prime farmland	2	0.28
LkB	Leck kill channery silt loam, 3 to 8 percent slopes	Leck Kill	85	0.19	Well drained	All areas are prime farmland	4	0.32
LkC	Leck kill channery silt loam, 8 to 15 percent slopes	Leck Kill	90	2.55	Well drained	Farmland of statewide importance	4	0.32
WkE	Weikert and Klinesville shaly silt loams, 25 to 80 percent slopes	Weikert	55	3.08	Somewhat excessively drained	Not prime farmland	2	0.32
WkE	Weikert and Klinesville shaly silt loams, 25 to 80 percent slopes	Klinesville	35	1.96	Somewhat excessively drained	Not prime farmland	2	0.28
Bd	Basher silt loam, occasionally flooded	Basher	90	8.81	Moderately well drained	All areas are prime farmland	5	0.32

Musym	Muname	Comp	%	Acres	Drainage Class	Farmland Class	Tfact	Kfact
Ho	Holly silt loam	Holly	100	5.1	Very poorly drained	Not prime farmland	5	0.28