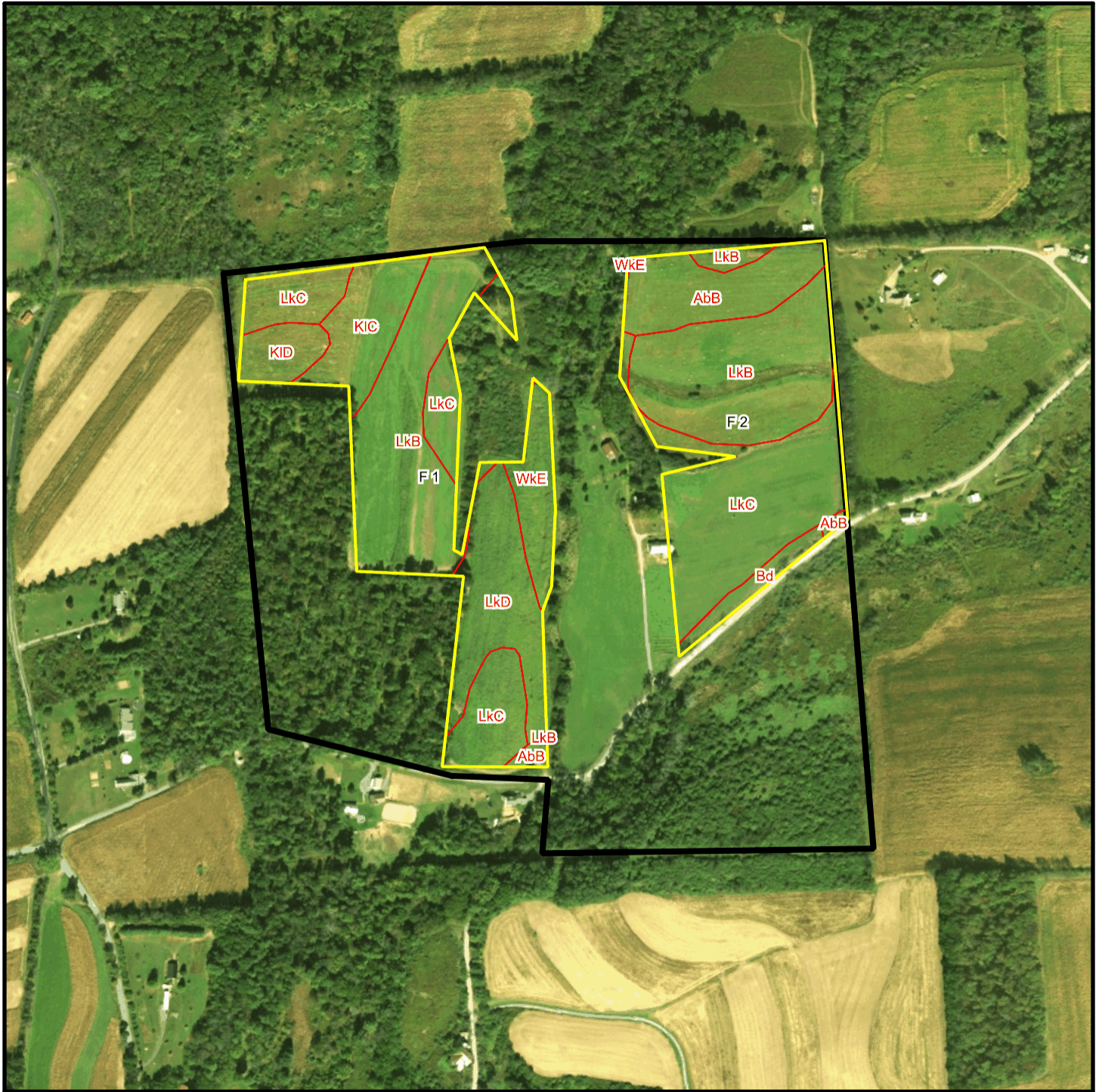
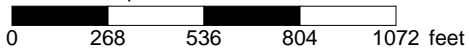


McCoy T 1828 Soil Map



* 536.0 feet per inch



Soil Acreages By Field

Field	Label	Musym	Muname	Comp	%	Acres	Drainage Class	Farmland Class	Tfact	Kfact
F 1	F 1	AbB	Albrights silt loam, 3 to 8 percent slopes	Albrights	85	0.24	Moderately well drained	All areas are prime farmland	3	0.37
F 1	F 1	KIC	Klinesville shaly silt loam, 8 to 15 percent slopes	Klinesville	90	2.99	Somewhat excessively drained	Not prime farmland	2	0.28
F 1	F 1	KID	Klinesville shaly silt loam, 15 to 25 percent slopes	Klinesville	100	1.37	Somewhat excessively drained	Not prime farmland	2	0.28
F 1	F 1	LkB	Leck kill channery silt loam, 3 to 8 percent slopes	Leck Kill	85	7.69	Well drained	All areas are prime farmland	4	0.32
F 1	F 1	LkC	Leck kill channery silt loam, 8 to 15 percent slopes	Leck Kill	90	5.31	Well drained	Farmland of statewide importance	4	0.32
F 1	F 1	LkD	Leck kill channery silt loam, 15 to 25 percent slopes	Leck Kill	80	4.65	Well drained	Not prime farmland	4	0.32
F 1	F 1	WkE	Weikert and Klinesville shaly silt loams, 25 to 80 percent slopes	Weikert	55	1.21	Somewhat excessively drained	Not prime farmland	2	0.32
F 1	F 1	WkE	Weikert and Klinesville shaly silt loams, 25 to 80 percent slopes	Klinesville	35	0.77	Somewhat excessively drained	Not prime farmland	2	0.28
F 2	F 2	AbB	Albrights silt loam, 3 to 8 percent slopes	Albrights	85	3.81	Moderately well drained	All areas are prime farmland	3	0.37
F 2	F 2	Bd	Basher silt loam, occasionally flooded	Basher	90	0.92	Moderately well drained	All areas are prime farmland	5	0.32
F 2	F 2	LkB	Leck kill channery silt loam, 3 to 8 percent slopes	Leck Kill	85	7.91	Well drained	All areas are prime farmland	4	0.32
F 2	F 2	LkC	Leck kill channery silt loam, 8 to 15 percent slopes	Leck Kill	90	7.73	Well drained	Farmland of statewide importance	4	0.32
F 2	F 2	WkE	Weikert and Klinesville shaly silt loams, 25 to 80 percent slopes	Weikert	55	0.01	Somewhat excessively drained	Not prime farmland	2	0.32

Field	Label	Musym	Muname	Comp	%	Acres	Drainage Class	Farmland Class	Tfact	Kfact
F 2	F 2	WkE	Weikert and Klinesville shaly silt loams, 25 to 80 percent slopes	Klinesville	35	0.01	Somewhat excessively drained	Not prime farmland	2	0.28

Soil Acreages For Farm

Musym	Muname	Comp	%	Acres	Drainage Class	Farmland Class	Tfact	Kfact
AbB	Albrights silt loam, 3 to 8 percent slopes	Albrights	85	4.05	Moderately well drained	All areas are prime farmland	3	0.37
KIC	Klinesville shaly silt loam, 8 to 15 percent slopes	Klinesville	90	2.99	Somewhat excessively drained	Not prime farmland	2	0.28
KID	Klinesville shaly silt loam, 15 to 25 percent slopes	Klinesville	100	1.37	Somewhat excessively drained	Not prime farmland	2	0.28
LkB	Leck kill channery silt loam, 3 to 8 percent slopes	Leck Kill	85	15.6	Well drained	All areas are prime farmland	4	0.32
LkC	Leck kill channery silt loam, 8 to 15 percent slopes	Leck Kill	90	13.04	Well drained	Farmland of statewide importance	4	0.32
LkD	Leck kill channery silt loam, 15 to 25 percent slopes	Leck Kill	80	4.65	Well drained	Not prime farmland	4	0.32
WkE	Weikert and Klinesville shaly silt loams, 25 to 80 percent slopes	Weikert	55	1.22	Somewhat excessively drained	Not prime farmland	2	0.32
WkE	Weikert and Klinesville shaly silt loams, 25 to 80 percent slopes	Klinesville	35	0.78	Somewhat excessively drained	Not prime farmland	2	0.28
Bd	Basher silt loam, occasionally flooded	Basher	90	0.92	Moderately well drained	All areas are prime farmland	5	0.32