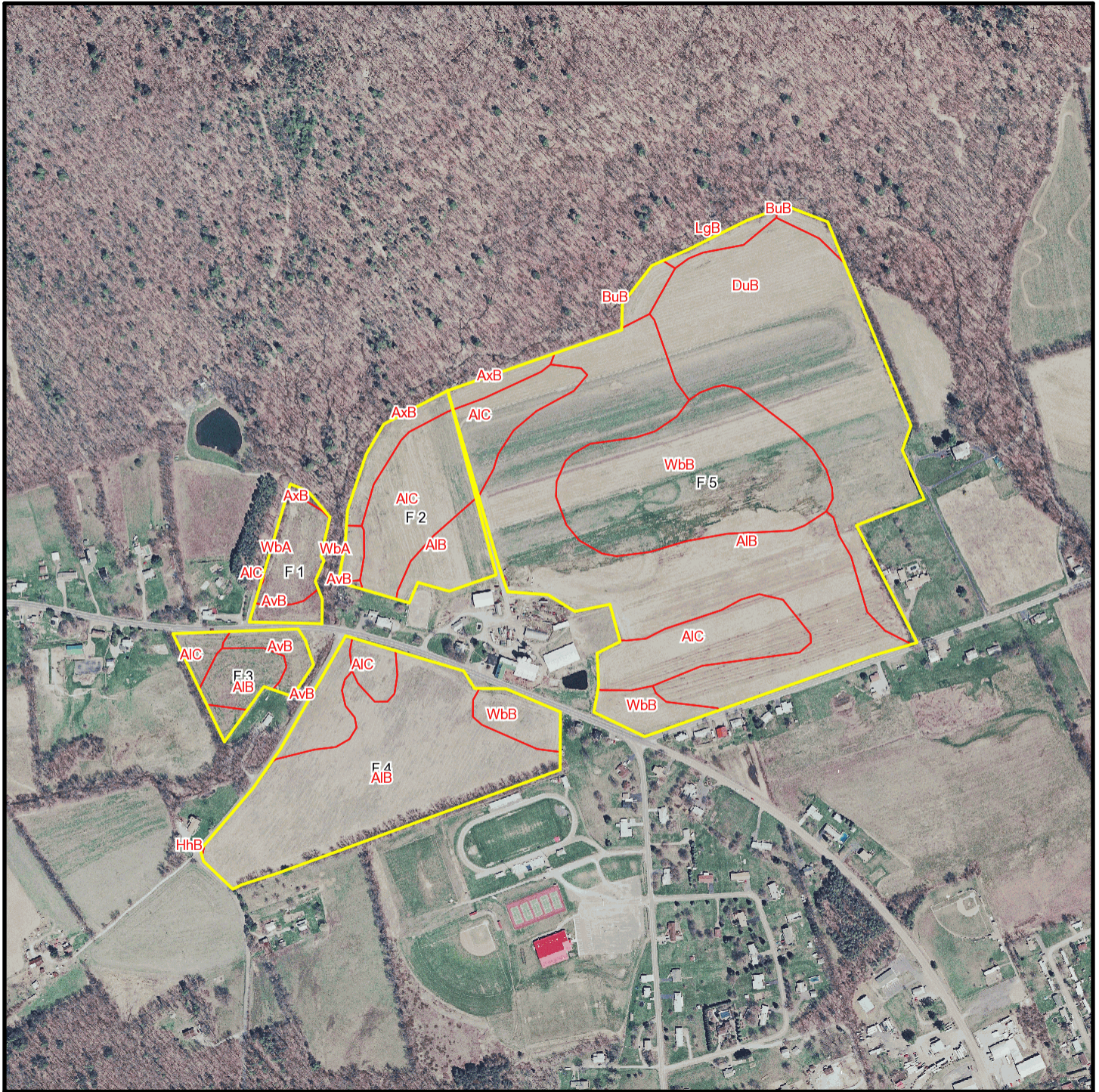
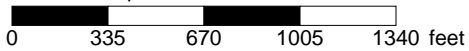


T 336 Soil Map



* 670.0 feet per inch



Soil Acreages By Field

Field	Label	Musym	Muname	Acres	Drainage Class	Farmland Class	Kfact
F 1	F 1	AIC	Allenwood gravelly silt loam, 8 to 15 percent slopes	0.01	Well drained	Farmland of statewide importance	0.32
F 1	F 1	AvB	Alvira silt loam, 3 to 8 percent slopes	0.72	Somewhat poorly drained	Farmland of statewide importance	0.32
F 1	F 1	AxB	Alvira very stony loam, 0 to 8 percent slopes	0.18	Somewhat poorly drained	Not prime farmland	0.32
F 1	F 1	WbA	Watson silt loam, 0 to 3 percent slopes	2.55	Moderately well drained	All areas are prime farmland	0.37
F 2	F 2	AIB	Allenwood gravelly silt loam, 3 to 8 percent slopes	2.47	Well drained	All areas are prime farmland	0.32
F 2	F 2	AIC	Allenwood gravelly silt loam, 8 to 15 percent slopes	5.97	Well drained	Farmland of statewide importance	0.32
F 2	F 2	AvB	Alvira silt loam, 3 to 8 percent slopes	0.05	Somewhat poorly drained	Farmland of statewide importance	0.32
F 2	F 2	AxB	Alvira very stony loam, 0 to 8 percent slopes	1.6	Somewhat poorly drained	Not prime farmland	0.32
F 2	F 2	WbA	Watson silt loam, 0 to 3 percent slopes	0.54	Moderately well drained	All areas are prime farmland	0.37
F 3	F 3	AIB	Allenwood gravelly silt loam, 3 to 8 percent slopes	1.89	Well drained	All areas are prime farmland	0.32
F 3	F 3	AIC	Allenwood gravelly silt loam, 8 to 15 percent slopes	0.78	Well drained	Farmland of statewide importance	0.32
F 3	F 3	AvB	Alvira silt loam, 3 to 8 percent slopes	1.63	Somewhat poorly drained	Farmland of statewide importance	0.32
F 4	F 4	AIB	Allenwood gravelly silt loam, 3 to 8 percent slopes	17.81	Well drained	All areas are prime farmland	0.32
F 4	F 4	AIC	Allenwood gravelly silt loam, 8 to 15 percent slopes	1.09	Well drained	Farmland of statewide importance	0.32
F 4	F 4	AvB	Alvira silt loam, 3 to 8 percent slopes	2.07	Somewhat poorly drained	Farmland of statewide importance	0.32
F 4	F 4	HhB	Hartleton channery silt loam, 3 to 8 percent slopes	0.01	Well drained	Farmland of statewide importance	0.24

Field	Label	Musym	Muname	Acres	Drainage Class	Farmland Class	Kfact
F 4	F 4	WbB	Watson silt loam, 3 to 8 percent slopes	1.83	Moderately well drained	All areas are prime farmland	0.37
F 5	F 5	AIB	Allenwood gravelly silt loam, 3 to 8 percent slopes	27.27	Well drained	All areas are prime farmland	0.32
F 5	F 5	AIC	Allenwood gravelly silt loam, 8 to 15 percent slopes	8.22	Well drained	Farmland of statewide importance	0.32
F 5	F 5	AxB	Alvira very stony loam, 0 to 8 percent slopes	0.88	Somewhat poorly drained	Not prime farmland	0.32
F 5	F 5	BuB	Buchanan very stony loam, 0 to 8 percent slopes	1.36	Moderately well drained	Not prime farmland	0.32
F 5	F 5	DuB	Duncannon loam, 3 to 8 percent slopes	22.6	Well drained	All areas are prime farmland	0.37
F 5	F 5	LgB	Laidig very stony loam, 0 to 8 percent slopes	0.77	Well drained	Not prime farmland	0.32
F 5	F 5	WbB	Watson silt loam, 3 to 8 percent slopes	16.78	Moderately well drained	All areas are prime farmland	0.37

Soil Acreages For Farm

MUSYM	MUNAME	Drainage Class	Farmland Class	kfact	acres
AIB	Allenwood gravelly silt loam, 3 to 8 percent slopes	Well drained	All areas are prime farmland	0.32	49.44
AIC	Allenwood gravelly silt loam, 8 to 15 percent slopes	Well drained	Farmland of statewide importance	0.32	16.07
AvB	Alvira silt loam, 3 to 8 percent slopes	Somewhat poorly drained	Farmland of statewide importance	0.32	4.47
AxB	Alvira very stony loam, 0 to 8 percent slopes	Somewhat poorly drained	Not prime farmland	0.32	2.66
BuB	Buchanan very stony loam, 0 to 8 percent slopes	Moderately well drained	Not prime farmland	0.32	1.36
DuB	Duncannon loam, 3 to 8 percent slopes	Well drained	All areas are prime farmland	0.37	22.6
HhB	Hartleton channery silt loam, 3 to 8 percent slopes	Well drained	Farmland of statewide importance	0.24	0.01
LgB	Laidig very stony loam, 0 to 8 percent slopes	Well drained	Not prime farmland	0.32	0.77
WbA	Watson silt loam, 0 to 3 percent slopes	Moderately well drained	All areas are prime farmland	0.37	3.09
WbB	Watson silt loam, 3 to 8 percent slopes	Moderately well drained	All areas are prime farmland	0.37	18.61