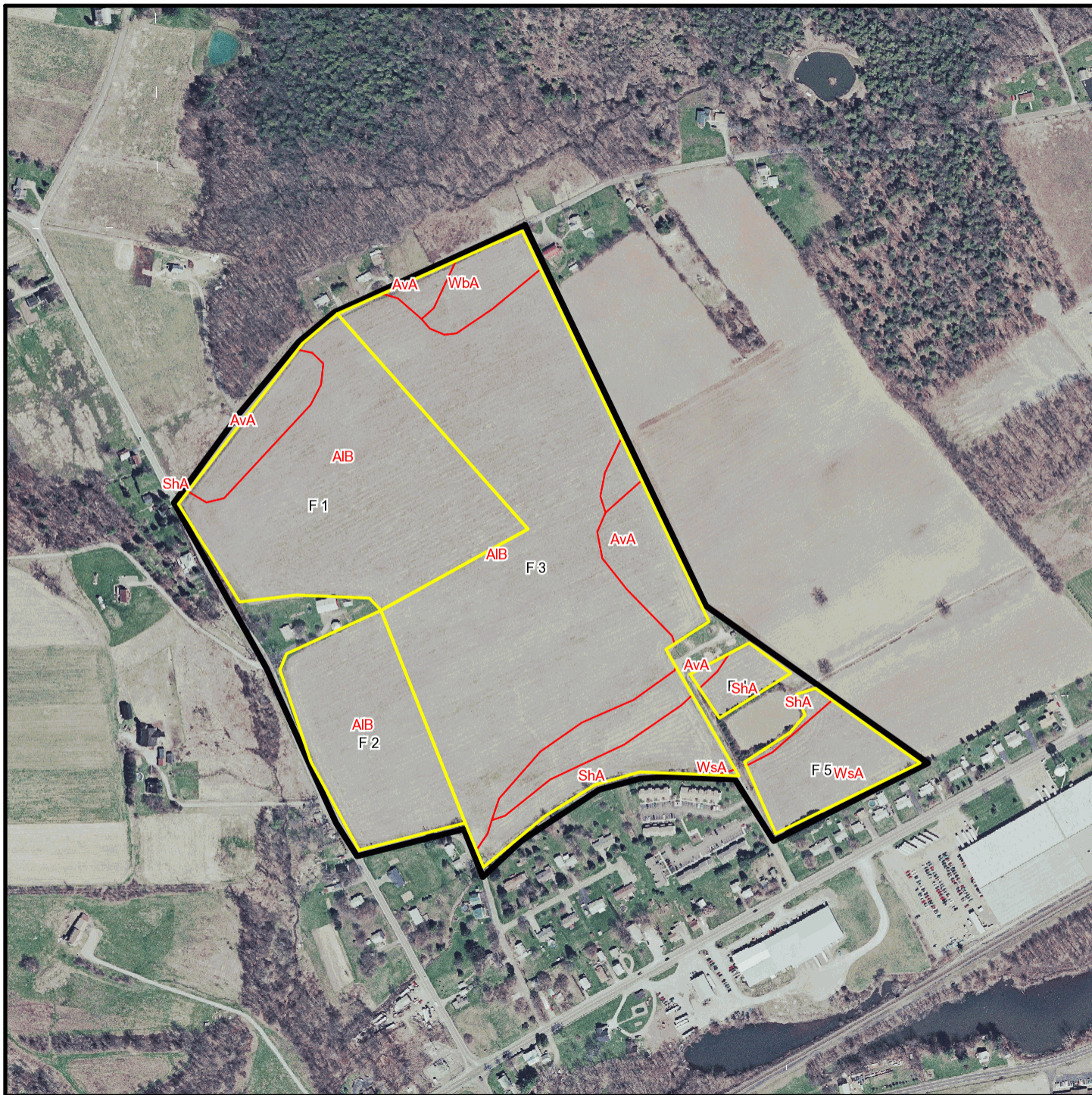
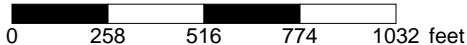


T 349 Soil Map



* 516.0 feet per inch



Soil Acreages By Field

Field	Label	Musym	Muname	Acres	Drainage Class	Farmland Class	Kfact
F 1	F 1	AIB	Allenwood gravelly silt loam, 3 to 8 percent slopes	14.74	Well drained	All areas are prime farmland	0.32
F 1	F 1	AvA	Alvira silt loam, 0 to 3 percent slopes	1.97	Somewhat poorly drained	Farmland of statewide importance	0.32
F 1	F 1	ShA	Shelmadine silt loam, 0 to 3 percent slopes	0	Poorly drained	Not prime farmland	0.32
F 2	F 2	AIB	Allenwood gravelly silt loam, 3 to 8 percent slopes	7.34	Well drained	All areas are prime farmland	0.32
F 3	F 3	AIB	Allenwood gravelly silt loam, 3 to 8 percent slopes	25.07	Well drained	All areas are prime farmland	0.32
F 3	F 3	AvA	Alvira silt loam, 0 to 3 percent slopes	4.96	Somewhat poorly drained	Farmland of statewide importance	0.32
F 3	F 3	ShA	Shelmadine silt loam, 0 to 3 percent slopes	2.86	Poorly drained	Not prime farmland	0.32
F 3	F 3	WbA	Watson silt loam, 0 to 3 percent slopes	2.18	Moderately well drained	All areas are prime farmland	0.37
F 3	F 3	WsA	Wheeling silt loam, 0 to 3 percent slopes	0.02	Well drained	All areas are prime farmland	0.37
F 4	F 4	AvA	Alvira silt loam, 0 to 3 percent slopes	0.13	Somewhat poorly drained	Farmland of statewide importance	0.32
F 4	F 4	ShA	Shelmadine silt loam, 0 to 3 percent slopes	0.96	Poorly drained	Not prime farmland	0.32
F 5	F 5	ShA	Shelmadine silt loam, 0 to 3 percent slopes	0.29	Poorly drained	Not prime farmland	0.32
F 5	F 5	WsA	Wheeling silt loam, 0 to 3 percent slopes	3.25	Well drained	All areas are prime farmland	0.37

Soil Acreages For Farm

MUSYM	MUNAME	Drainage Class	Farmland Class	kfact	acres
AIB	Allenwood gravelly silt loam, 3 to 8 percent slopes	Well drained	All areas are prime farmland	0.32	47.15
AvA	Alvira silt loam, 0 to 3 percent slopes	Somewhat poorly drained	Farmland of statewide importance	0.32	7.06
ShA	Shelmadine silt loam, 0 to 3 percent slopes	Poorly drained	Not prime farmland	0.32	4.11

MUSYM	MUNAME	Drainage Class	Farmland Class	kfact	acres
WbA	Watson silt loam, 0 to 3 percent slopes	Moderately well drained	All areas are prime farmland	0.37	2.18
WsA	Wheeling silt loam, 0 to 3 percent slopes	Well drained	All areas are prime farmland	0.37	3.27