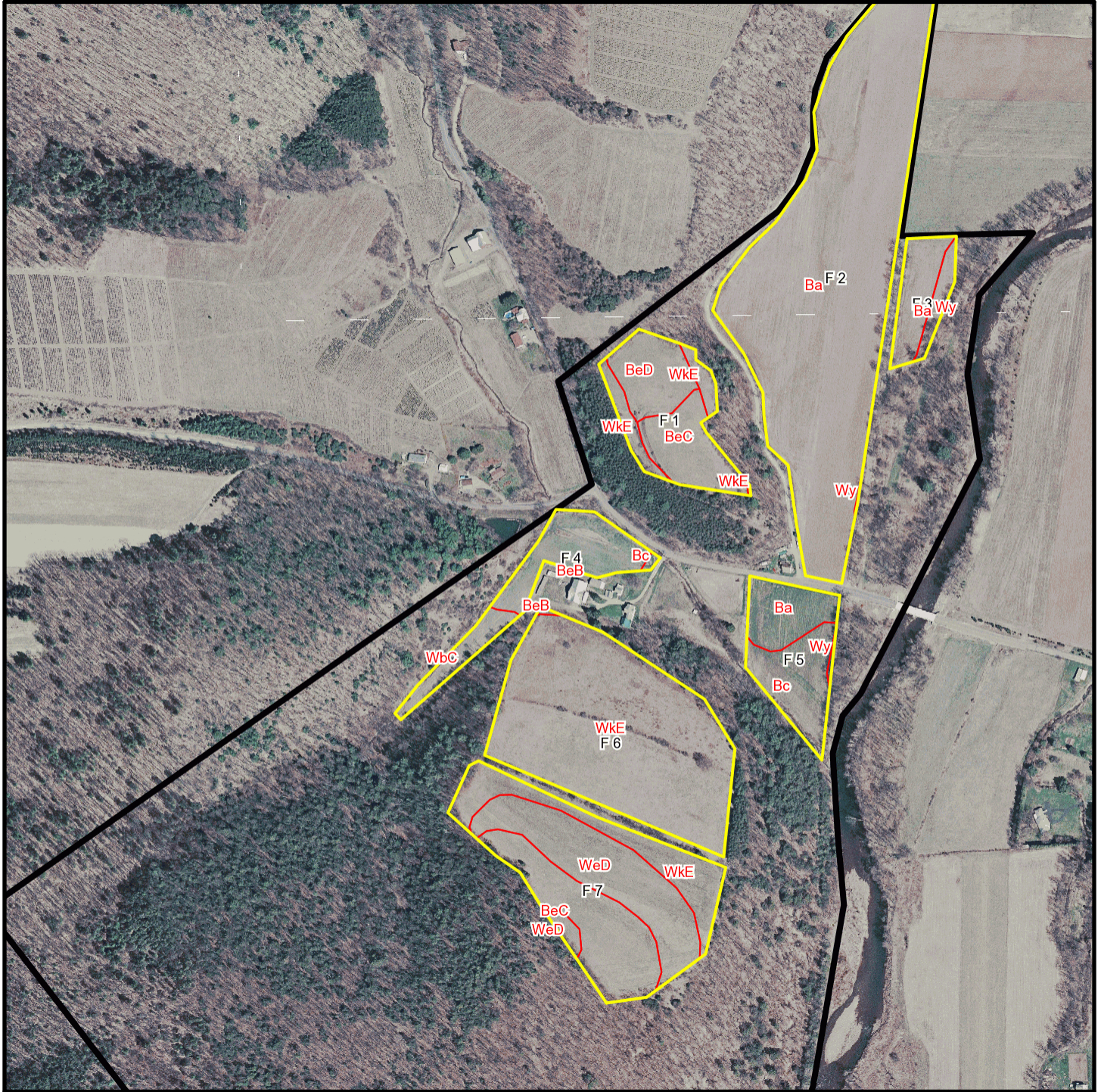
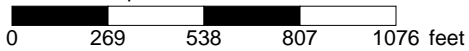


# Rogers T 1364



\* 538.0 feet per inch



## Soil Acreages By Field

Field	Label	Musym	Muname	Acres	Drainage Class	Farmland Class	Kfact
F 1	F 1	BeC	Berks channery silt loam, 8 to 15 percent slopes	1.84	Well drained	Farmland of statewide importance	0.32
F 1	F 1	BeD	Berks channery silt loam, 15 to 25 percent slopes	1.68	Well drained	Not prime farmland	0.32
F 1	F 1	WkE	Weikert and Klinsville shaly silt loams, 25 to 80 percent slopes	0.85	Somewhat excessively drained	Not prime farmland	0.3
F 2	F 2	Ba	Barbour fine sandy loam	19.32	Well drained	All areas are prime farmland	0.32
F 2	F 2	Wy	Wyoming gravelly sandy loam, occasionally flooded	0.01	Somewhat excessively drained	Farmland of statewide importance	0.2
F 3	F 3	Ba	Barbour fine sandy loam	1.32	Well drained	All areas are prime farmland	0.32
F 3	F 3	Wy	Wyoming gravelly sandy loam, occasionally flooded	0.48	Somewhat excessively drained	Farmland of statewide importance	0.2
F 4	F 4	Bc	Basher silt loam	0.05	Moderately well drained	All areas are prime farmland	0.32
F 4	F 4	BeB	Berks channery silt loam, 3 to 8 percent slopes	2.13	Well drained	Farmland of statewide importance	0.32
F 4	F 4	WbC	Watson silt loam, 8 to 15 percent slopes	0.85	Moderately well drained	Farmland of statewide importance	0.37
F 5	F 5	Ba	Barbour fine sandy loam	1.5	Well drained	All areas are prime farmland	0.32
F 5	F 5	Bc	Basher silt loam	2	Moderately well drained	All areas are prime farmland	0.32
F 5	F 5	Wy	Wyoming gravelly sandy loam, occasionally flooded	0.05	Somewhat excessively drained	Farmland of statewide importance	0.2
F 6	F 6	BeB	Berks channery silt loam, 3 to 8 percent slopes	0.03	Well drained	Farmland of statewide importance	0.32
F 6	F 6	WkE	Weikert and Klinsville shaly silt loams, 25 to 80 percent slopes	11.3	Somewhat excessively drained	Not prime farmland	0.3
F 7	F 7	BeC	Berks channery silt loam, 8 to 15 percent slopes	3.39	Well drained	Farmland of statewide importance	0.32

Field	Label	Musym	Muname	Acres	Drainage Class	Farmland Class	Kfact
F 7	F 7	WeD	Weikert shaly silt loam, 15 to 25 percent slopes	4.24	Somewhat excessively drained	Not prime farmland	0.32
F 7	F 7	WkE	Weikert and Klinesville shaly silt loams, 25 to 80 percent slopes	2.5	Somewhat excessively drained	Not prime farmland	0.3

## Soil Acreages For Farm

MUSYM	MUNAME	Drainage Class	Farmland Class	kfact	acres
Ba	Barbour fine sandy loam	Well drained	All areas are prime farmland	0.32	22.14
Bc	Basher silt loam	Moderately well drained	All areas are prime farmland	0.32	2.05
BeB	Berks channery silt loam, 3 to 8 percent slopes	Well drained	Farmland of statewide importance	0.32	2.16
BeC	Berks channery silt loam, 8 to 15 percent slopes	Well drained	Farmland of statewide importance	0.32	5.23
BeD	Berks channery silt loam, 15 to 25 percent slopes	Well drained	Not prime farmland	0.32	1.68
WbC	Watson silt loam, 8 to 15 percent slopes	Moderately well drained	Farmland of statewide importance	0.37	0.85
WeD	Weikert shaly silt loam, 15 to 25 percent slopes	Somewhat excessively drained	Not prime farmland	0.32	4.24
WkE	Weikert and Klinesville shaly silt loams, 25 to 80 percent slopes	Somewhat excessively drained	Not prime farmland	0.3	14.65
Wy	Wyoming gravelly sandy loam, occasionally flooded	Somewhat excessively drained	Farmland of statewide importance	0.2	0.54