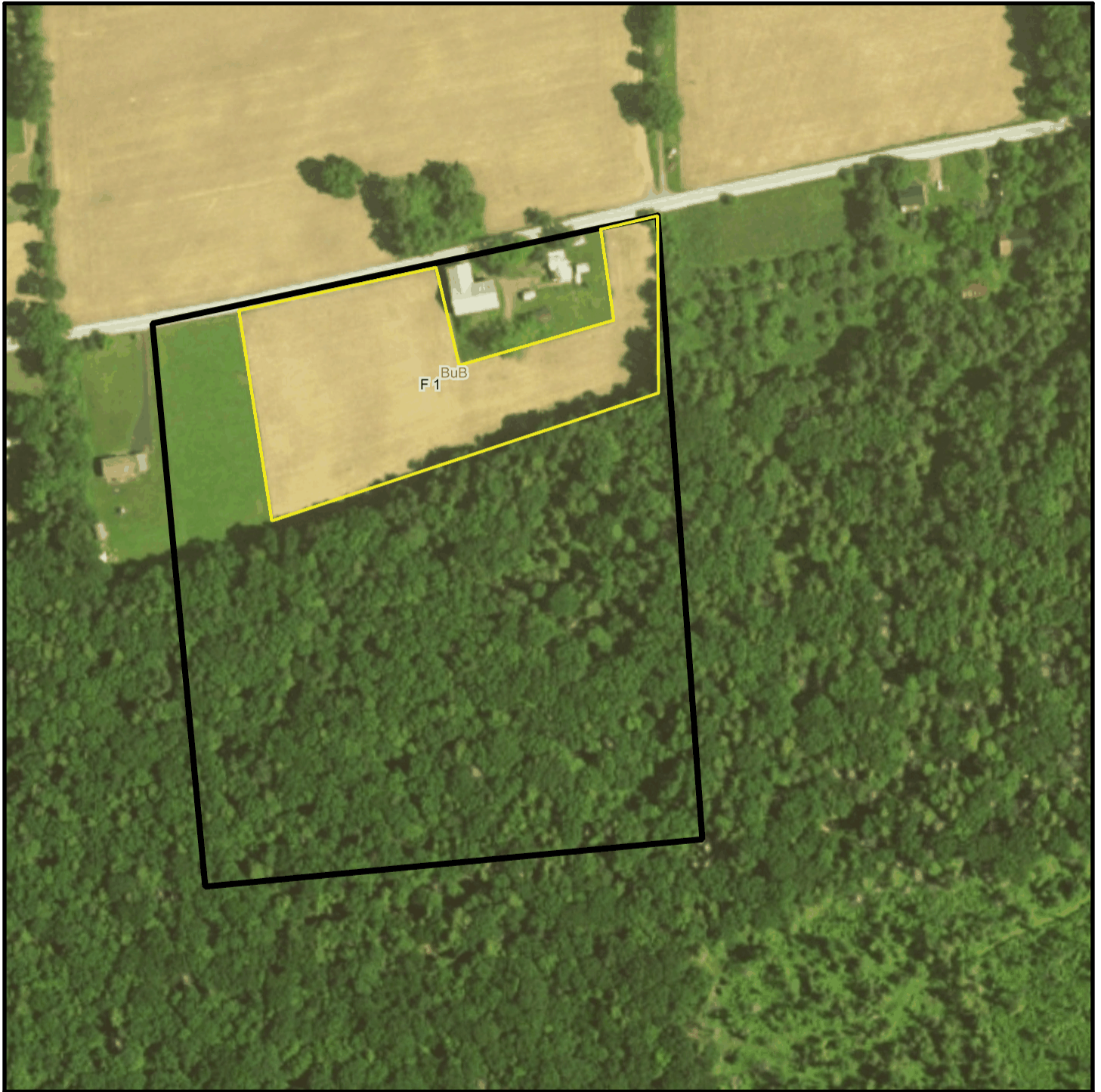


Schrack T 675 Soil Map



* 244.0 feet per inch



Soil Acreages By Field

Field	Label	Musym	Muname	Comp	%	Acres	Drainage Class	Farmland Class	Tfact	Kfact
F 1	F 1	CeA	Clymer channery loam, 0 to 3 percent slopes	Clymer	80	7.05	Well drained	All areas are prime farmland	3	0.24
F 1	F 1	CeB	Clymer channery loam, 3 to 8 percent slopes	Clymer	75	2.04	Well drained	All areas are prime farmland	3	0.24
F 1	F 1	HIB	Hazleton-Clymer channery loams, 3 to 8 percent slopes	Hazleton	40	3.01	Well drained	All areas are prime farmland	3	0.17
F 1	F 1	HIB	Hazleton-Clymer channery loams, 3 to 8 percent slopes	Clymer	40	3.01	Well drained	All areas are prime farmland	3	0.24
F 1	F 1	HmB	Hazleton-Clymer channery loams, 0 to 8 percent slopes, extremely stony	Hazleton	45	0.04	Well drained	Not prime farmland	3	0.17
F 1	F 1	HmB	Hazleton-Clymer channery loams, 0 to 8 percent slopes, extremely stony	Clymer	40	0.03	Well drained	Not prime farmland	3	0.24
F 1	F 1	BuB	Buchanan-Andover gravelly loams, 3 to 8 percent slopes	Buchanan	45	2.2	Moderately well drained	Farmland of statewide importance	4	0.32
F 1	F 1	BuB	Buchanan-Andover gravelly loams, 3 to 8 percent slopes	Andover	40	1.96	Moderately well drained	Farmland of statewide importance	3	0.32
F 2	F 2	BeC	Berks channery silt loam, 8 to 15 percent slopes	Berks	80	8.27	Well drained	Farmland of statewide importance	3	0.32
F 2	F 2	BuB	Buchanan-Andover gravelly loams, 3 to 8 percent slopes	Buchanan	45	0.14	Moderately well drained	Farmland of statewide importance	4	0.32
F 2	F 2	BuB	Buchanan-Andover gravelly loams, 3 to 8 percent slopes	Andover	40	0.13	Moderately well drained	Farmland of statewide importance	3	0.32

Soil Acreages For Farm

Musym	Muname	Comp	%	Acres	Drainage Class	Farmland Class	Tfact	Kfact
BeC	Berks channery silt loam, 8 to 15 percent slopes	Berks	80	8.27	Well drained	Farmland of statewide importance	3	0.32
BuB	Buchanan-Andover gravelly loams, 3 to 8 percent slopes	Buchanan	45	2.34	Moderately well drained	Farmland of statewide importance	4	0.32
BuB	Buchanan-Andover gravelly loams, 3 to 8 percent slopes	Andover	40	2.09	Moderately well drained	Farmland of statewide importance	3	0.32
CeA	Clymer channery loam, 0 to 3 percent slopes	Clymer	80	7.05	Well drained	All areas are prime farmland	3	0.24
CeB	Clymer channery loam, 3 to 8 percent slopes	Clymer	75	2.04	Well drained	All areas are prime farmland	3	0.24
HIB	Hazleton-Clymer channery loams, 3 to 8 percent slopes	Hazleton	40	3.01	Well drained	All areas are prime farmland	3	0.17
HIB	Hazleton-Clymer channery loams, 3 to 8 percent slopes	Clymer	40	3.01	Well drained	All areas are prime farmland	3	0.24
HmB	Hazleton-Clymer channery loams, 0 to 8 percent slopes, extremely stony	Hazleton	45	0.04	Well drained	Not prime farmland	3	0.17
HmB	Hazleton-Clymer channery loams, 0 to 8 percent slopes, extremely stony	Clymer	40	0.03	Well drained	Not prime farmland	3	0.24