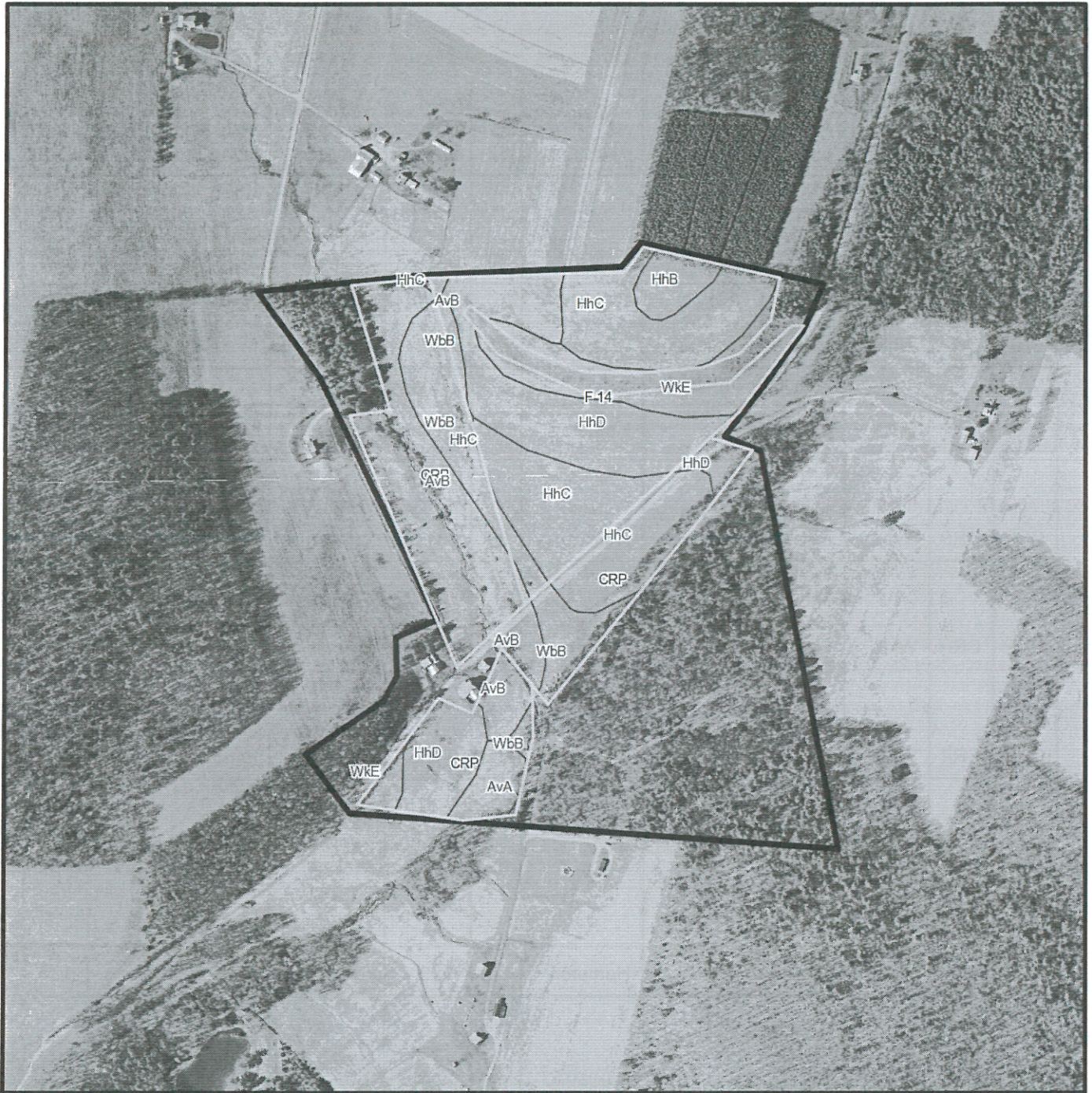
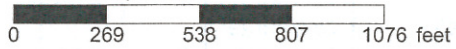


T 3362

map by GIS/PA/PA/PA



* 538.0 feet per inch



Soil Acreages By Field

Field	Label	Musym	Muname	Comp	%	Acres	Drainage Class	Farmland Class	Tfact	Kfact
CRP	CRP	AvB	Alvira silt loam, 3 to 8 percent slopes	Alvira	82	9.74	Somewhat poorly drained	Farmland of statewide importance	3	0.32
CRP	CRP	HhC	Hartleton channery silt loam, 8 to 15 percent slopes	Hartleton	90	3.43	Well drained	Farmland of statewide importance	3	0.24
CRP	CRP	WbB	Watson silt loam, 3 to 8 percent slopes	Watson	90	4.71	Moderately well drained	All areas are prime farmland	3	0.37
CRP	CRP	HhD	Hartleton channery silt loam, 15 to 25 percent slopes	Hartleton	90	2.99	Well drained	Not prime farmland	3	0.24
CRP	CRP	AvA	Alvira silt loam, 0 to 3 percent slopes	Alvira	80	1.21	Somewhat poorly drained	Farmland of statewide importance	3	0.32
CRP	CRP	WkE	Weikert and Klinesville shaly silt loams, 25 to 80 percent slopes	Weikert	55	0.29	Somewhat excessively drained	Not prime farmland	2	0.32
CRP	CRP	WkE	Weikert and Klinesville shaly silt loams, 25 to 80 percent slopes	Klinesville	35	0.18	Somewhat excessively drained	Not prime farmland	2	0.28
F 14	F 14	AvB	Alvira silt loam, 3 to 8 percent slopes	Alvira	82	0.07	Somewhat poorly drained	Farmland of statewide importance	3	0.32
F 14	F 14	HhB	Hartleton channery silt loam, 3 to 8 percent slopes	Hartleton	75	1.23	Well drained	Farmland of statewide importance	3	0.24
F 14	F 14	HhC	Hartleton channery silt loam, 8 to 15 percent slopes	Hartleton	90	9.09	Well drained	Farmland of statewide importance	3	0.24
F 14	F 14	HhD	Hartleton channery silt loam, 15 to 25 percent slopes	Hartleton	90	6.94	Well drained	Not prime farmland	3	0.24
F 14	F 14	WbB	Watson silt loam, 3 to 8 percent slopes	Watson	90	0.81	Moderately well drained	All areas are prime farmland	3	0.37

Field	Label	Musym	Muname	Comp	%	Acres	Drainage Class	Farmland Class	Tfact	Kfact
F 14	F 14	WkE	Weikert and Klinesville shaly silt loams, 25 to 80 percent slopes	Weikert	55	1.77	Somewhat excessively drained	Not prime farmland	2	0.32
F 14	F 14	WkE	Weikert and Klinesville shaly silt loams, 25 to 80 percent slopes	Klinesville	35	1.13	Somewhat excessively drained	Not prime farmland	2	0.28

Soil Acreages For Farm

Musym	Muname	Comp	%	Acres	Drainage Class	Farmland Class	Tfact	Kfact
AvB	Alvira silt loam, 3 to 8 percent slopes	Alvira	82	9.81	Somewhat poorly drained	Farmland of statewide importance	3	0.32
HhB	Hartleton channery silt loam, 3 to 8 percent slopes	Hartleton	75	1.23	Well drained	Farmland of statewide importance	3	0.24
HhC	Hartleton channery silt loam, 8 to 15 percent slopes	Hartleton	90	12.52	Well drained	Farmland of statewide importance	3	0.24
HhD	Hartleton channery silt loam, 15 to 25 percent slopes	Hartleton	90	9.93	Well drained	Not prime farmland	3	0.24
WbB	Watson silt loam, 3 to 8 percent slopes	Watson	90	5.52	Moderately well drained	All areas are prime farmland	3	0.37
WkE	Weikert and Klinesville shaly silt loams, 25 to 80 percent slopes	Weikert	55	2.06	Somewhat excessively drained	Not prime farmland	2	0.32
WkE	Weikert and Klinesville shaly silt loams, 25 to 80 percent slopes	Klinesville	35	1.31	Somewhat excessively drained	Not prime farmland	2	0.28
AvA	Alvira silt loam, 0 to 3 percent slopes	Alvira	80	1.21	Somewhat poorly drained	Farmland of statewide importance	3	0.32