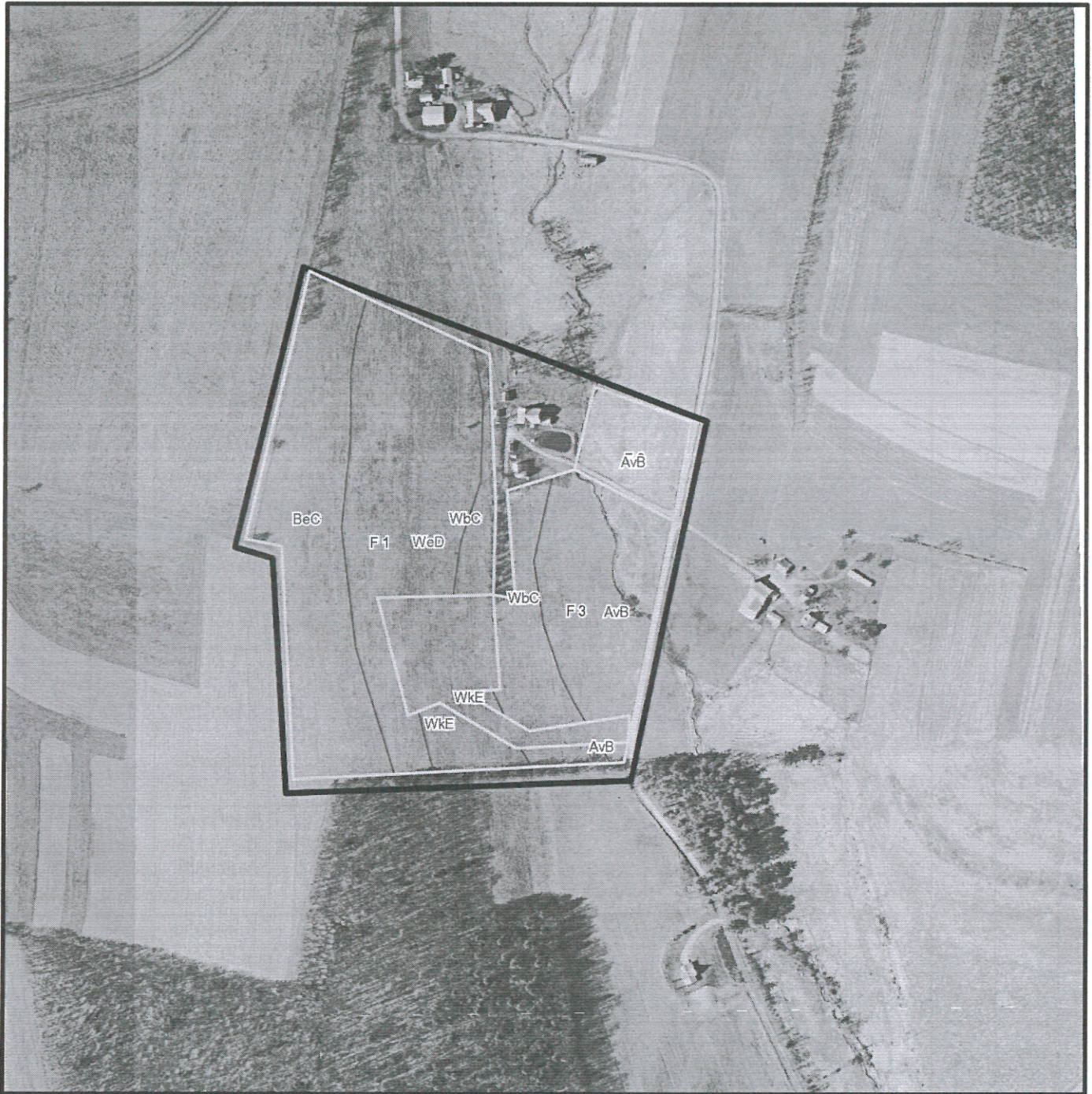


# T 3482



\* 414.0 feet per inch



## Soil Acreages By Field

Field	Label	Musym	Muname	Comp	%	Acres	Drainage Class	Farmland Class	Tfact	Kfact
F 1	F 1	AvB	Alvira silt loam, 3 to 8 percent slopes	Alvira	82	0.08	Somewhat poorly drained	Farmland of statewide importance	3	0.32
F 1	F 1	BeC	Berks channery silt loam, 8 to 15 percent slopes	Berks	100	7.06	Well drained	Farmland of statewide importance	3	0.32
F 1	F 1	WbC	Watson silt loam, 8 to 15 percent slopes	Watson	90	1.22	Moderately well drained	Farmland of statewide importance	3	0.37
F 1	F 1	WeD	Weikert shaly silt loam, 15 to 25 percent slopes	Weikert	85	7.6	Somewhat excessively drained	Not prime farmland	2	0.32
F 1	F 1	WkE	Weikert and Klinesville shaly silt loams, 25 to 80 percent slopes	Weikert	55	0.51	Somewhat excessively drained	Not prime farmland	2	0.32
F 1	F 1	WkE	Weikert and Klinesville shaly silt loams, 25 to 80 percent slopes	Klinesville	35	0.33	Somewhat excessively drained	Not prime farmland	2	0.28
F 2	F 2	AvB	Alvira silt loam, 3 to 8 percent slopes	Alvira	82	1.84	Somewhat poorly drained	Farmland of statewide importance	3	0.32
F 3	F 3	AvB	Alvira silt loam, 3 to 8 percent slopes	Alvira	82	4.62	Somewhat poorly drained	Farmland of statewide importance	3	0.32
F 3	F 3	WbC	Watson silt loam, 8 to 15 percent slopes	Watson	90	2.1	Moderately well drained	Farmland of statewide importance	3	0.37
F 3	F 3	WkE	Weikert and Klinesville shaly silt loams, 25 to 80 percent slopes	Weikert	55	0.04	Somewhat excessively drained	Not prime farmland	2	0.32
F 3	F 3	WkE	Weikert and Klinesville shaly silt loams, 25 to 80 percent slopes	Klinesville	35	0.03	Somewhat excessively drained	Not prime farmland	2	0.28

## Soil Acreages For Farm

Musym	Muname	Comp	%	Acres	Drainage Class	Farmland Class	Tfact	Kfact
AvB	Alvira silt loam, 3 to 8 percent slopes	Alvira	82	6.54	Somewhat poorly drained	Farmland of statewide importance	3	0.32
BeC	Berks channery silt loam, 8 to 15 percent slopes	Berks	100	7.06	Well drained	Farmland of statewide importance	3	0.32
WbC	Watson silt loam, 8 to 15 percent slopes	Watson	90	3.32	Moderately well drained	Farmland of statewide importance	3	0.37
WeD	Weikert shaly silt loam, 15 to 25 percent slopes	Weikert	85	7.6	Somewhat excessively drained	Not prime farmland	2	0.32
WkE	Weikert and Klinsville shaly silt loams, 25 to 80 percent slopes	Weikert	55	0.55	Somewhat excessively drained	Not prime farmland	2	0.32
WkE	Weikert and Klinsville shaly silt loams, 25 to 80 percent slopes	Klinsville	35	0.36	Somewhat excessively drained	Not prime farmland	2	0.28