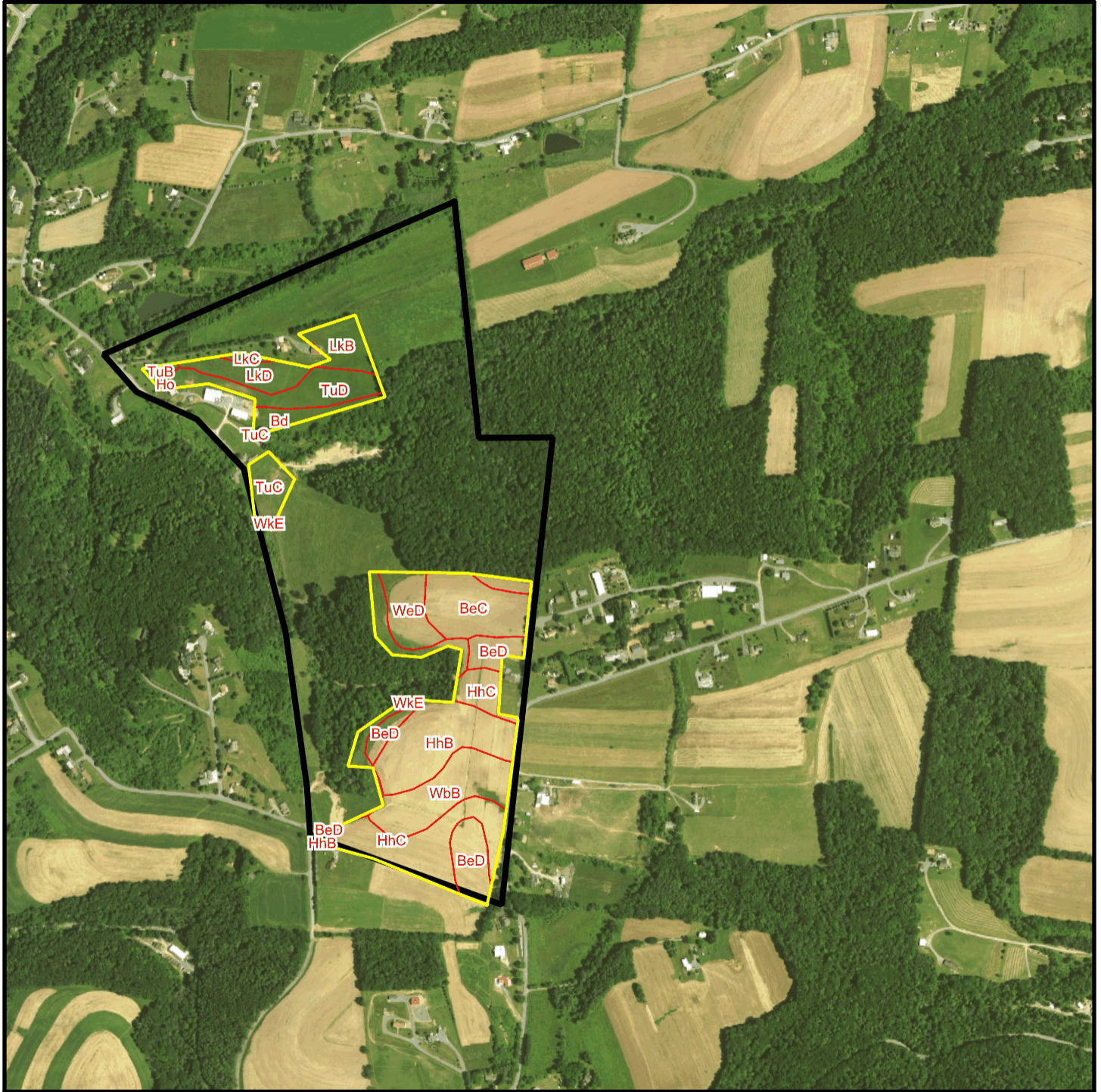
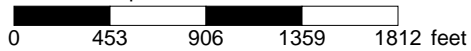


Ulmer T 2351 Soil Map



* 906.0 feet per inch



Soil Acreages By Field

Field	Label	Musym	Muname	Comp	%	Acres	Drainage Class	Farmland Class	Tfact	Kfact
F 1	F 1	Bd	Basher silt loam, occasionally flooded	Basher	90	1.43	Moderately well drained	All areas are prime farmland	5	0.32
F 1	F 1	Ho	Holly silt loam	Holly	100	0.15	Very poorly drained	Not prime farmland	5	0.28
F 1	F 1	LkB	Leck kill channery silt loam, 3 to 8 percent slopes	Leck Kill	85	2.23	Well drained	All areas are prime farmland	4	0.32
F 1	F 1	LkC	Leck kill channery silt loam, 8 to 15 percent slopes	Leck Kill	90	0.28	Well drained	Farmland of statewide importance	4	0.32
F 1	F 1	LkD	Leck kill channery silt loam, 15 to 25 percent slopes	Leck Kill	80	2.38	Well drained	Not prime farmland	4	0.32
F 1	F 1	TuB	Tunkhannock gravelly loam, 3 to 8 percent slopes	Tunkhannock	100	0.32	Well drained	All areas are prime farmland	3	0.28
F 1	F 1	TuC	Tunkhannock gravelly loam, 8 to 15 percent slopes	Tunkhannock	100	0.01	Well drained	Farmland of statewide importance	3	0.28
F 1	F 1	TuD	Tunkhannock gravelly loam, 15 to 25 percent slopes	Tunkhannock	100	3.9	Well drained	Not prime farmland	3	0.28
F 2	F 2	TuC	Tunkhannock gravelly loam, 8 to 15 percent slopes	Tunkhannock	100	1.87	Well drained	Farmland of statewide importance	3	0.28
F 2	F 2	WkE	Weikert and Klinesville shaly silt loams, 25 to 80 percent slopes	Weikert	55	0.04	Somewhat excessively drained	Not prime farmland	2	0.32
F 2	F 2	WkE	Weikert and Klinesville shaly silt loams, 25 to 80 percent slopes	Klinesville	35	0.03	Somewhat excessively drained	Not prime farmland	2	0.28
F 3	F 3	BeC	Berks channery silt loam, 8 to 15 percent slopes	Berks	100	4.98	Well drained	Farmland of statewide importance	3	0.32
F 3	F 3	BeD	Berks channery silt loam, 15 to 25 percent slopes	Berks	100	4.79	Well drained	Not prime farmland	3	0.32

Field	Label	Musym	Muname	Comp	%	Acres	Drainage Class	Farmland Class	Tfact	Kfact
F 3	F 3	HhB	Hartleton channery silt loam, 3 to 8 percent slopes	Hartleton	75	6.89	Well drained	Farmland of statewide importance	3	0.24
F 3	F 3	HhC	Hartleton channery silt loam, 8 to 15 percent slopes	Hartleton	90	7.63	Well drained	Farmland of statewide importance	3	0.24
F 3	F 3	WbB	Watson silt loam, 3 to 8 percent slopes	Watson	90	5.49	Moderately well drained	All areas are prime farmland	3	0.37
F 3	F 3	WeD	Weikert shaly silt loam, 15 to 25 percent slopes	Weikert	85	2.87	Somewhat excessively drained	Not prime farmland	2	0.32
F 3	F 3	WkE	Weikert and Klinesville shaly silt loams, 25 to 80 percent slopes	Weikert	55	1.96	Somewhat excessively drained	Not prime farmland	2	0.32
F 3	F 3	WkE	Weikert and Klinesville shaly silt loams, 25 to 80 percent slopes	Klinesville	35	1.25	Somewhat excessively drained	Not prime farmland	2	0.28

Soil Acreages For Farm

Musym	Muname	Comp	%	Acres	Drainage Class	Farmland Class	Tfact	Kfact
Bd	Basher silt loam, occasionally flooded	Basher	90	1.43	Moderately well drained	All areas are prime farmland	5	0.32
Ho	Holly silt loam	Holly	100	0.15	Very poorly drained	Not prime farmland	5	0.28
LkB	Leck kill channery silt loam, 3 to 8 percent slopes	Leck Kill	85	2.23	Well drained	All areas are prime farmland	4	0.32
LkC	Leck kill channery silt loam, 8 to 15 percent slopes	Leck Kill	90	0.28	Well drained	Farmland of statewide importance	4	0.32
LkD	Leck kill channery silt loam, 15 to 25 percent slopes	Leck Kill	80	2.38	Well drained	Not prime farmland	4	0.32
TuB	Tunkhannock gravelly loam, 3 to 8 percent slopes	Tunkhannock	100	0.32	Well drained	All areas are prime farmland	3	0.28

Musym	Muname	Comp	%	Acres	Drainage Class	Farmland Class	Tfact	Kfact
TuC	Tunkhannock gravelly loam, 8 to 15 percent slopes	Tunkhannock	100	1.88	Well drained	Farmland of statewide importance	3	0.28
TuD	Tunkhannock gravelly loam, 15 to 25 percent slopes	Tunkhannock	100	3.9	Well drained	Not prime farmland	3	0.28
WkE	Weikert and Klinesville shaly silt loams, 25 to 80 percent slopes	Weikert	55	2	Somewhat excessively drained	Not prime farmland	2	0.32
WkE	Weikert and Klinesville shaly silt loams, 25 to 80 percent slopes	Klinesville	35	1.28	Somewhat excessively drained	Not prime farmland	2	0.28
BeC	Berks channery silt loam, 8 to 15 percent slopes	Berks	100	4.98	Well drained	Farmland of statewide importance	3	0.32
BeD	Berks channery silt loam, 15 to 25 percent slopes	Berks	100	4.79	Well drained	Not prime farmland	3	0.32
HhB	Hartleton channery silt loam, 3 to 8 percent slopes	Hartleton	75	6.89	Well drained	Farmland of statewide importance	3	0.24
HhC	Hartleton channery silt loam, 8 to 15 percent slopes	Hartleton	90	7.63	Well drained	Farmland of statewide importance	3	0.24
WbB	Watson silt loam, 3 to 8 percent slopes	Watson	90	5.49	Moderately well drained	All areas are prime farmland	3	0.37
WeD	Weikert shaly silt loam, 15 to 25 percent slopes	Weikert	85	2.87	Somewhat excessively drained	Not prime farmland	2	0.32