

Future Direction of the PA Chesapeake Bay Program

All Bay Meeting
December 2007

Future Direction of the PA Chesapeake Bay Program

Where We Are:

What We Expect Next Year:

What To Expect in the Future:

Future Direction of the PA Chesapeake Bay Program

Where We Are:

- ❖ **Pollution Loads Have Been Reduced**
 - **25.8 million pounds of Nitrogen**
 - **1.7 million pounds of Phosphorus**
 - **420,000 tons of sediment**

- ❖ **BMPs Have Been Installed**
 - **1000+ Manure Storage Systems**
 - **200 Barnyard Runoff Control**
 - **4000+ Acres of Conservation Tillage**

- ❖ **Money Has Been Spent**
 - **\$63.3 million on BMPs (1986-2006)**

Flow-adjusted Nitrogen Concentration Trends in the Chesapeake Bay Watershed

The Susquehanna River is Running Cleaner...

Nutrient and Sediment Concentrations are Trending Down

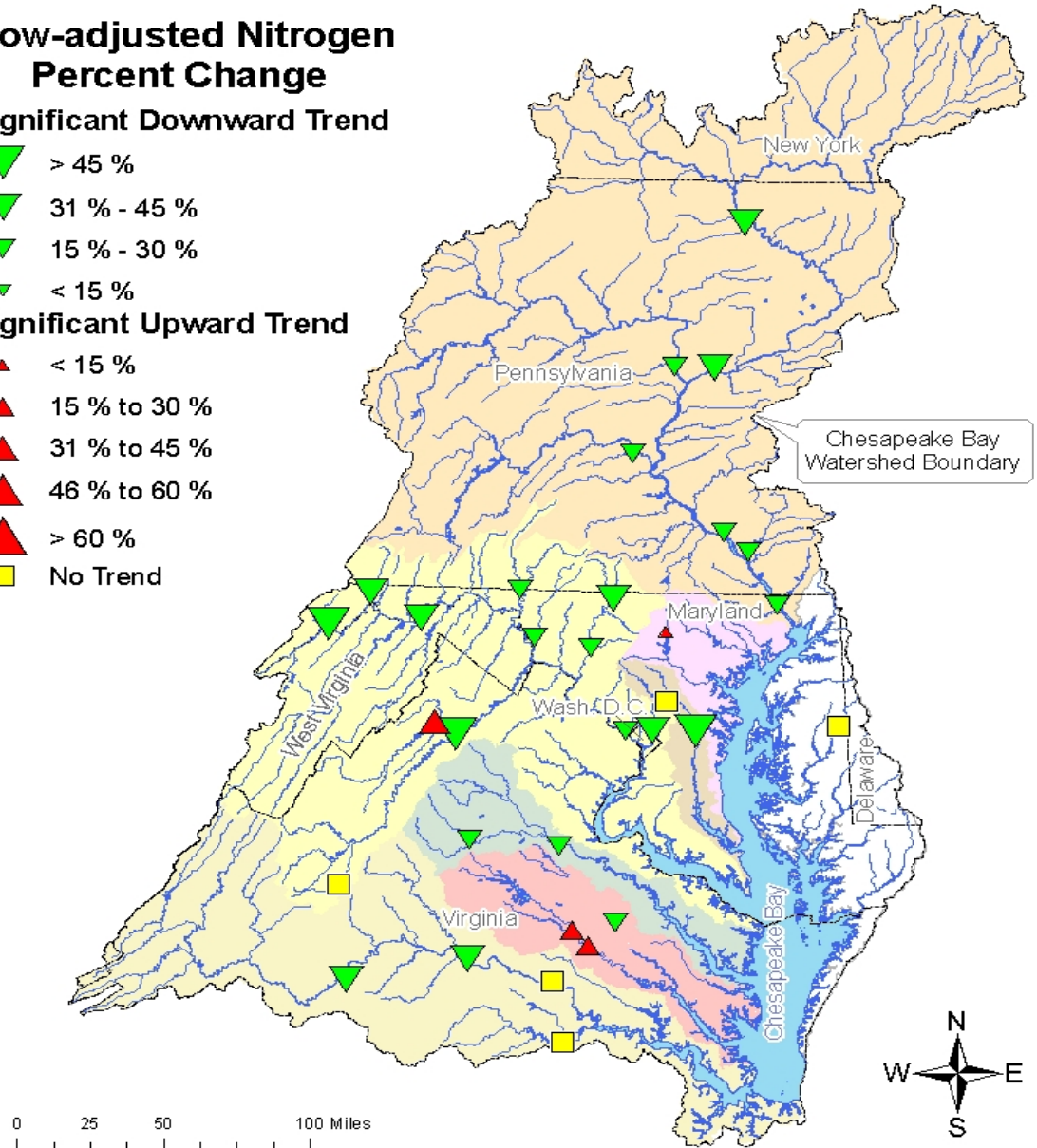
Flow-adjusted Nitrogen Percent Change

Significant Downward Trend

- ▼ > 45 %
- ▼ 31 % - 45 %
- ▼ 15 % - 30 %
- ▼ < 15 %

Significant Upward Trend

- ▲ < 15 %
- ▲ 15 % to 30 %
- ▲ 31 % to 45 %
- ▲ 46 % to 60 %
- ▲ > 60 %
- No Trend



Future Direction of the PA Chesapeake Bay Program

Where We Are:

2007-08 Chesapeake Bay Grant

- ❖ **\$4.5 million Federal-State Partnership**

- ❖ **Conservation District Funding**
 - **Staffing \approx \$2.1 million**
 - **“Special Project” BMPs \approx \$1.2 million**

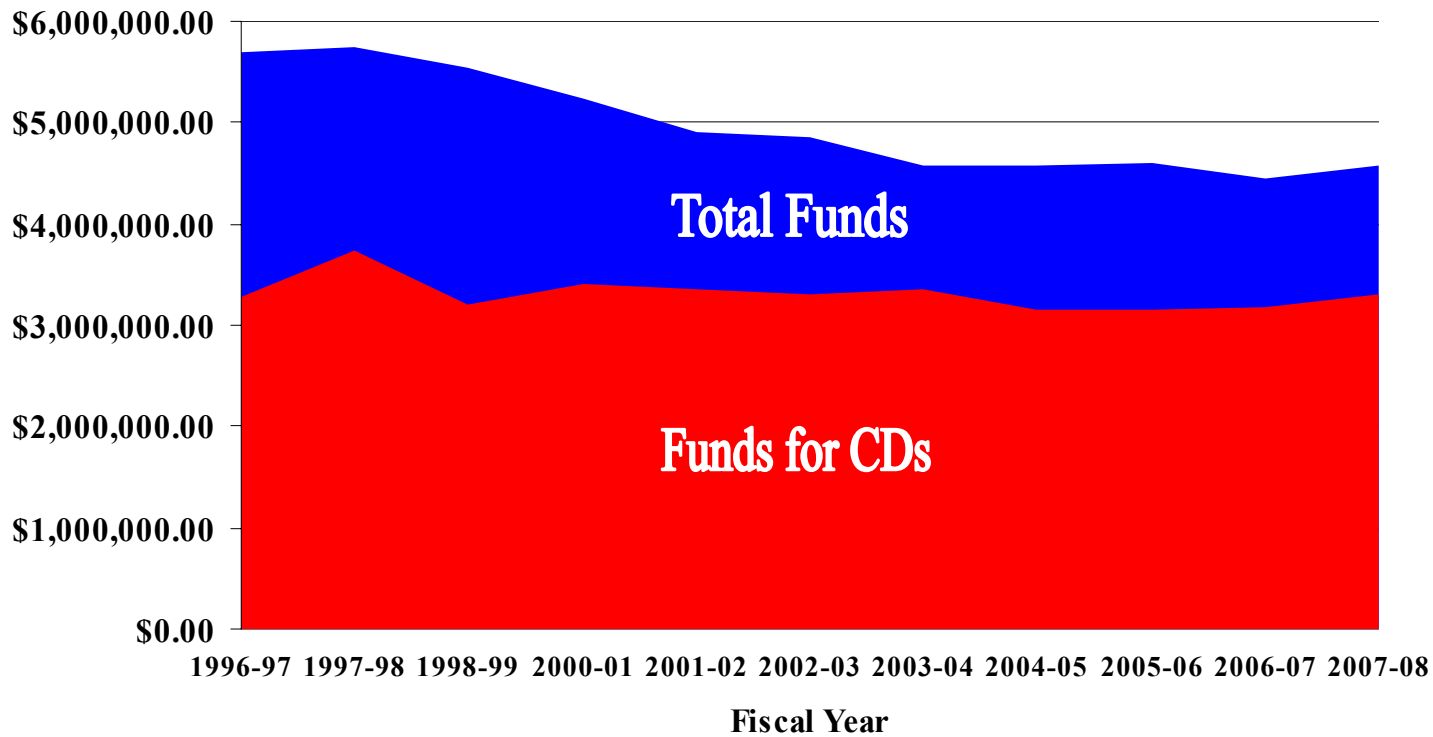
CD Funding = 72% of Chesapeake Bay Implementation Grant

2007-08 Grant

<u>Objective</u>	<u>Federal</u>	<u>State</u>	<u>Total Budget</u>
Program Management	\$ 263,099.50	\$ 141,520.50	\$ 404,522.00
TMDL Development (SRBC)	\$ 205,500.00		\$ 205,500.00
Baseline Nutrient Monitoring (SRBC)		\$ 131,200.00	\$ 131,200.00
Baseline Nutrient Monitoring (DEP - Potomac)		\$ 38,500.00	\$ 38,500.00
Chesapeake Bay Education Office (PACD)		\$ 175,000.00	\$ 175,000.00
Conservation District Technician Program	\$ 283,725.50	\$1,548,059.50	\$1,831,785.00
Conservation District Engineering Program		\$ 238,988.00	\$ 238,988.00
Conservation District Cost Share Program	\$1,234,675.00		\$1,234,675.00
Livestock Stream Fencing (DEP)	\$ 300,000.00		\$ 300,000.00
Baseline Nutrient Monitoring (DEP - Susquehanna)		\$ 13,800.00	\$ 13,800.00
TOTAL	\$2,287,000.00	\$2,287,000.00	\$4,574,000.00

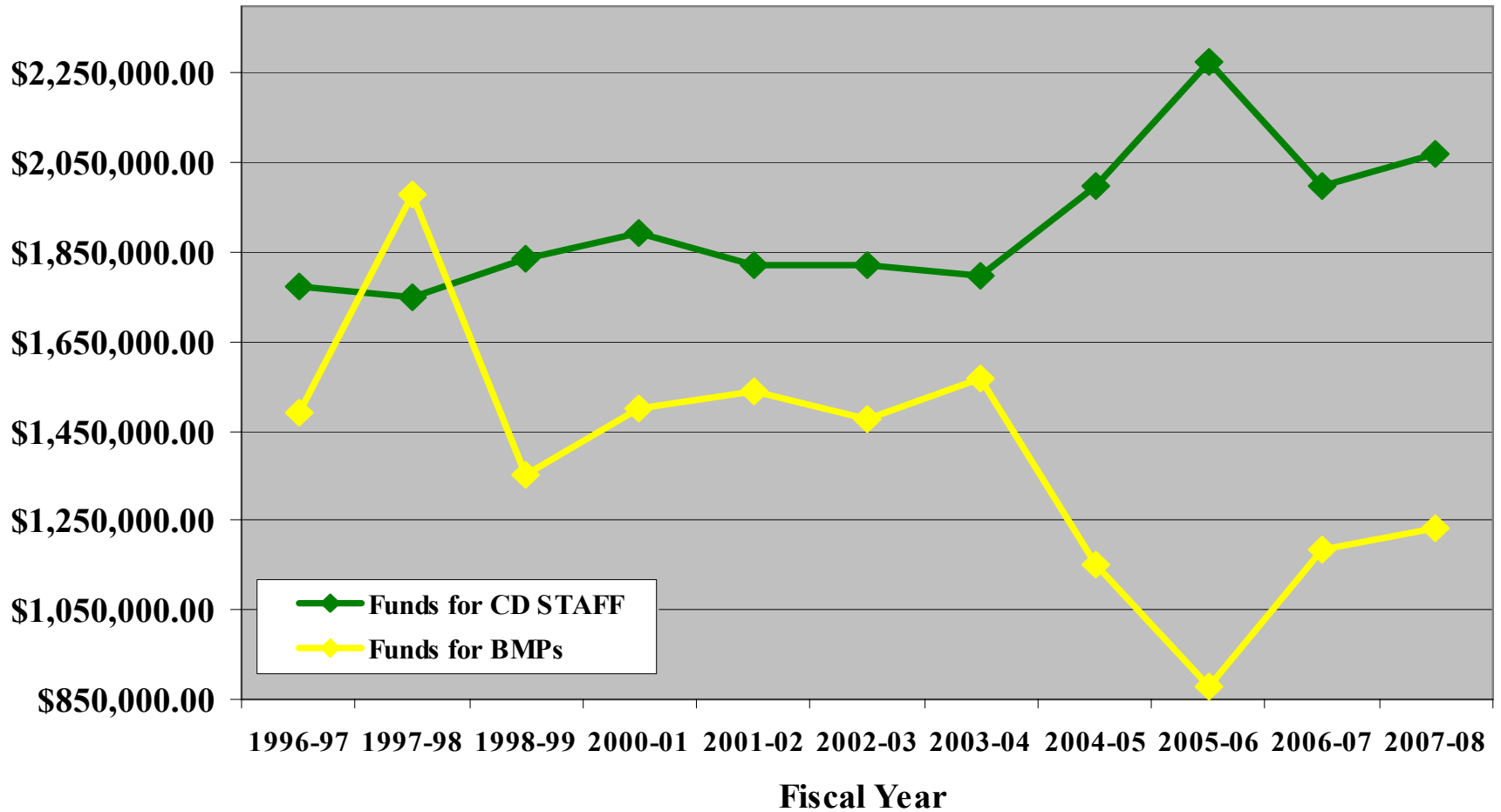
FY 2007-08 = \$4.574 Million

DEP Chesapeake Bay Funding



DEP Chesapeake Bay Funding

Conservation District STAFF and BMPs



Future Direction of the PA Chesapeake Bay Program

What Do We Expect Next Year?

❖ **Bay Grant Budget**

- **Technicians/Engineers Are Priority**
- **≈ \$1 million “Special Project” BMP Funds**

❖ **Biofuels**

❖ **Farm Bill**

Future Direction of the PA Chesapeake Bay Program

What To Expect in the Future?

❖ **2010**

❖ **Funding**

❖ **Priority Projects / Focus Areas**