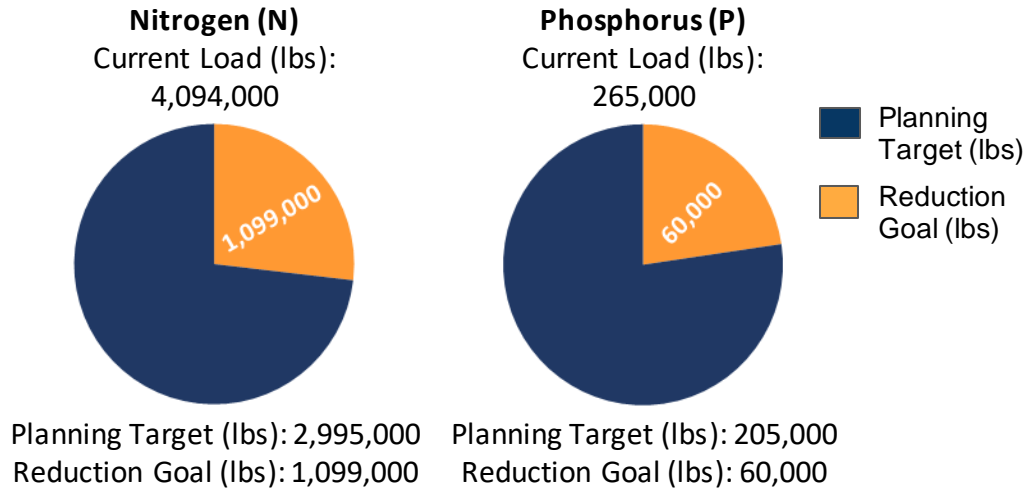


Huntingdon County, Pennsylvania

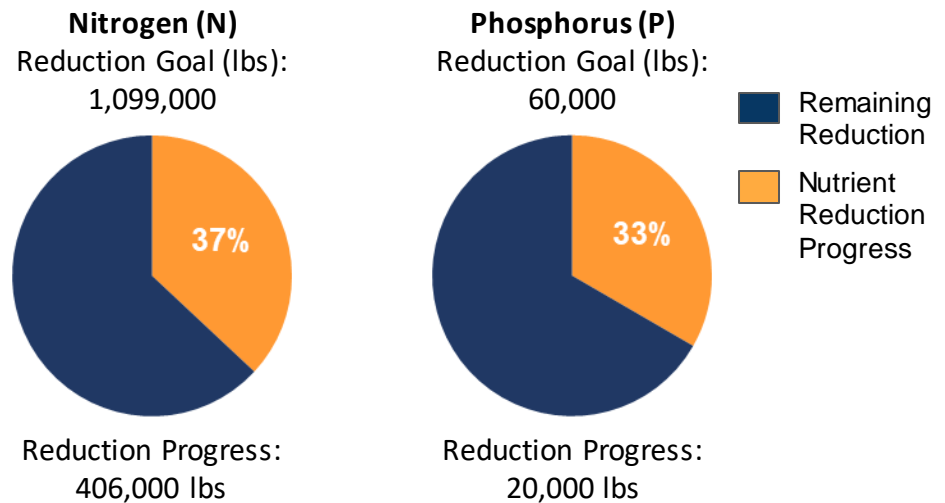
Current Conditions

Huntingdon County is one of 34 counties in Pennsylvania's Chesapeake Bay Watershed that have developed Countywide Action Plans. Current loading rates are 4.09M lbs of nitrogen and 265K lbs of phosphorus annually. By 2025 Huntingdon County needs to reduce 1.1M lbs of nitrogen and 60K lbs of phosphorus.



Pollutant Reduction Progress

By 2025, Huntingdon County needs to reduce 1.1M lbs of nitrogen and 60K lbs of phosphorus. Huntingdon County has developed a plan to reduce 406K lbs of nitrogen, which is 37% of the goal and 20K lbs of phosphorus, which is 33% of the goal.

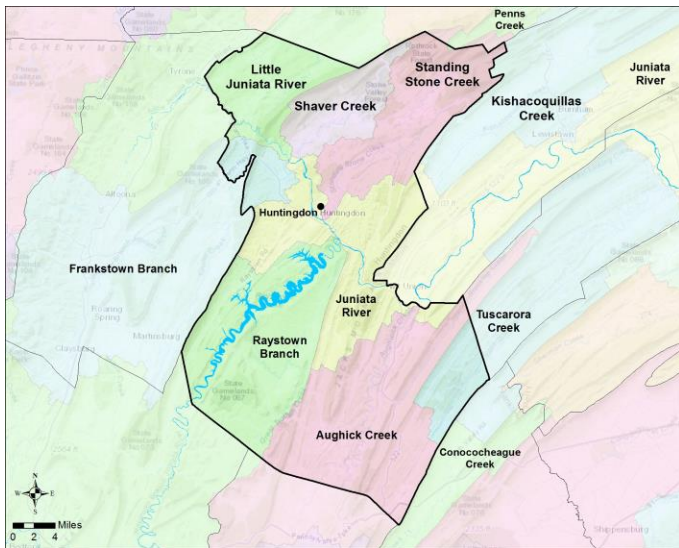


Sector Reductions

Huntingdon County has identified reductions within two sectors within their planning template: agriculture and natural. Projected land use changes and population changes results in increases within three sectors: developed, septic and wastewater. Huntingdon County has identified practices that result in total reductions of 406K lbs of nitrogen and 20K lbs of phosphorus.

Sector	Nitrogen (lbs.)	Phosphorus (lbs.)
Agriculture	-398,000	-13,000
Developed	+7,000	+1,000
Natural	-34,000	-6,000
Septic	+3,000	-
Wastewater	+17,000	-1,000
Total Reductions	-406,000	-20,000

Huntingdon County Watershed Map



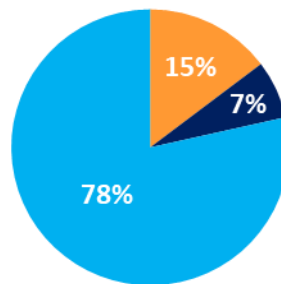
Information About the Watersheds

Huntingdon County contains 7 major watersheds: Little Juniata River, Shaver Creek, Standing Stone Creek, Juniata River, Frankstown Branch Juniata River, Raystown Branch Juniata River, and Aughwick Creek. Watersheds in Huntingdon County have elevated levels of nitrogen, phosphorus, and sediment. Of the 1,714 total stream miles in Huntingdon County, approximately 5% have degraded aquatic communities due to causes such as disturbance, siltation (excessive sediment), metals, nutrient pollution and others.

County Land Use:

Huntingdon County has a total acreage of 569,125 acres in the Bay watershed. Agricultural land represents 15% of the total land with 83,615 total acres. Developed land represents another 7% of the total land in Huntingdon County. Natural land, which is made up of forests, stream, and wetlands, represents the remaining 78% of the land in Huntingdon County. Cropland makes up a majority of the Agriculture sector with 38,055 acres. The developed sector is mostly Non-Municipal Separate Storm Sewer Systems (MS4s) (99.7%) 38,595 acres with a very small portion of MS4s (0.3%) 99 acres.

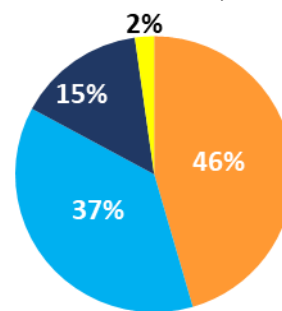
Huntingdon County:
Total Acres: 569,125



■ Agriculture
■ Developed
■ Natural

Agriculture:

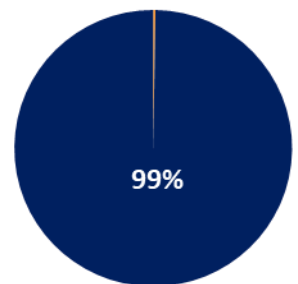
Total Acres: 83,615



■ Cropland
■ Hay
■ Pasture
■ Other Ag

Developed:

Total Acres: 38,694
<1%



■ MS4
■ Non MS4

Local Benefits:

Storm events are the number one way for nutrients and sediment to enter waterways. Increased runoff impacts: flooding, water quality, habitat, etc. Pollutants enter the waterways by two methods: overland runoff or leaching into groundwater.



Flooding affects safety, property, infrastructure, and economics.



Huntingdon County relies on local water sources to supply drinking water to its residents.



Just like humans, Huntingdon County's livestock depend on clean water.

Learn more and Get Involved

To learn more about the Countywide Action Plans, visit DEPs Countywide Action Plans website: www.dep.pa.gov/pacountywideactionplans.org

To learn more about how to get involved, go to the Join In website (www.dep.pa.gov/joinpacap.org) to find a contact person for each county.

