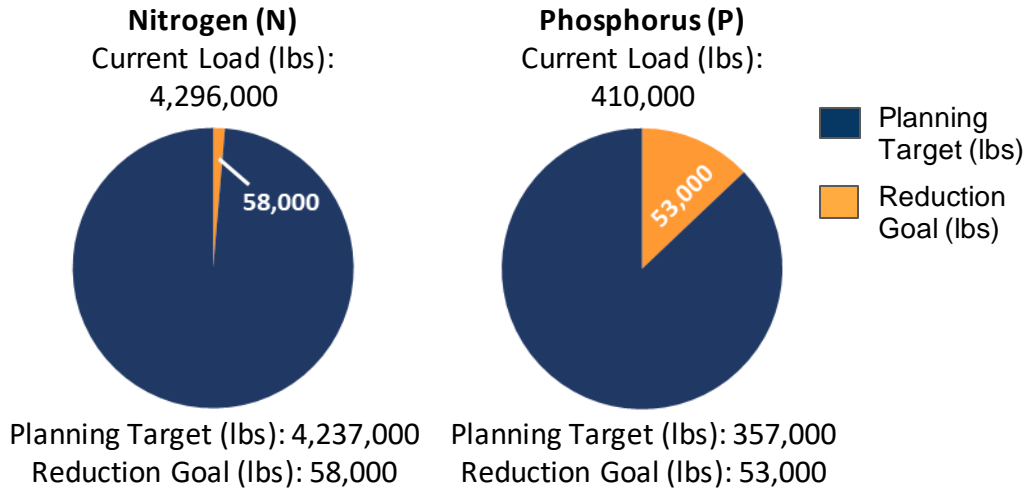


# Luzerne County, Pennsylvania

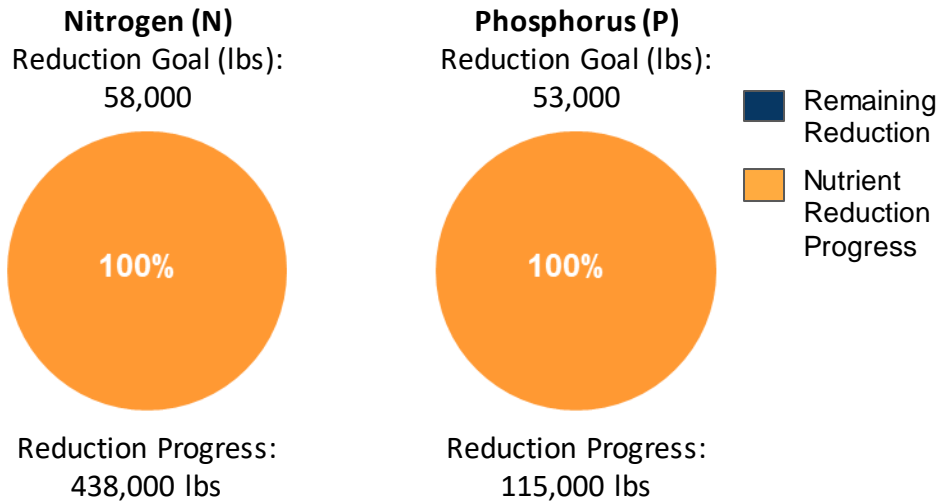
## Current Conditions

Luzerne County is one of 34 counties in Pennsylvania's Chesapeake Bay Watershed that have developed Countywide Action Plans. Current loading rates are 4.3M lbs of nitrogen and 410K lbs of phosphorus annually. By 2025 Luzerne County needs to reduce 58K lbs of nitrogen and 53K lbs of phosphorus.



## Pollutant Reduction Progress

By 2025, Luzerne County needs to reduce 58K lbs of nitrogen and 53K lbs of phosphorus. Luzerne County has developed a plan to reduce 438K lbs of nitrogen, which is over 100% of the goal and 115K lbs of phosphorus, which is over 100% of the goal.

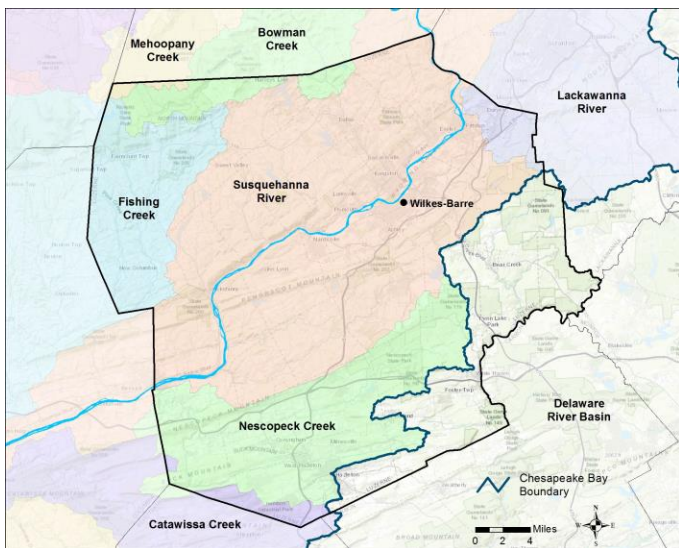


## Sector Reductions

Luzerne County has identified reductions within four sectors within their planning template: agriculture, developed, natural, and wastewater. Projected land use changes and population changes results in increases within the septic sector. Luzerne County has identified practices that result in total reductions of 438K lbs of nitrogen and 115K lbs of phosphorus.

Sector	Nitrogen (lbs.)	Phosphorus (lbs.)
Agriculture	-217,000	-9,000
Developed	-77,000	-7,000
Natural	-23,000	-18,000
Septic	+2,000	-
Wastewater	-122,000	-81,000
<b>Total Reductions</b>	<b>-438,000</b>	<b>-115,000</b>

# Luzerne County Watershed Map



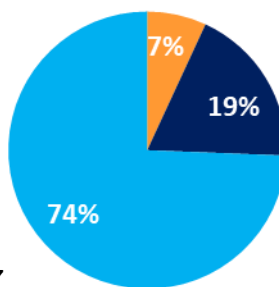
## Information About the Watersheds

Luzerne County contains 7 major watersheds: Mehoopany Creek, Bowman Creek, Fishing Creek, Susquehanna River, Lackawanna River, Nescopeck Creek and Catawissa Creek. Watersheds in Luzerne County have elevated levels of nitrogen, phosphorus, and sediment. Of the 1,144 total stream miles in Luzerne County, approximately 16% have degraded aquatic communities due to causes such as disturbance, siltation (excessive sediment), metals, nutrient pollution and others.

## County Land Use:

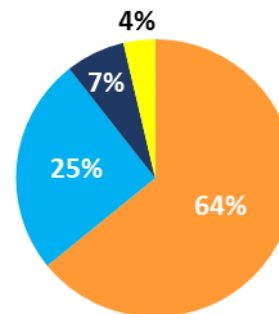
Luzerne County has a total acreage of 494,989 acres in the Bay watershed. Agricultural land represents 7% of the total land with 34,149 total acres. Developed land represents another 19% of the total land in Luzerne County. Natural land, which is made up of forests, stream, and wetlands, represents the remaining 74% of the land in Luzerne County. Cropland makes up a majority of the Agriculture sector with 21,897 acres. The developed sector is mostly Non-Municipal Separate Storm Sewer Systems (MS4s) (66%) 61,512 acres and a smaller portion of MS4s (34%) 31,145 acres.

**Luzerne County:**  
Total Acres: 494,989



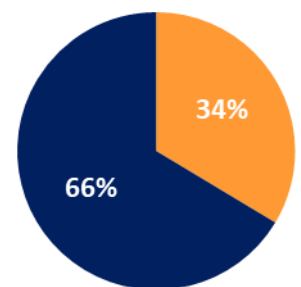
■ Agriculture  
■ Developed  
■ Natural

**Agriculture:**  
Total Acres: 34,149



■ Cropland  
■ Hay  
■ Pasture  
■ Other Ag

**Developed:**  
Total Acres: 92,657



■ MS4  
■ Non MS4

## Local Benefits:

Storm events are the number one way for nutrients and sediment to enter waterways. Increased runoff impacts: flooding, water quality, habitat, etc. Pollutants enter the waterways by two methods: overland runoff or leaching into groundwater.



Flooding affects safety, property, infrastructure, and economics.



Luzerne County relies on local water sources to supply drinking water to its residents.



Just like humans, Luzerne County's livestock depend on clean water.

## Learn more and Get Involved

To learn more about the Countywide Action Plans, visit DEPs Countywide Action Plans website: [www.dep.pa.gov/pacountywideactionplans.org](http://www.dep.pa.gov/pacountywideactionplans.org)

To learn more about how to get involved, go to the Join In website ([www.dep.pa.gov/joinpacap.org](http://www.dep.pa.gov/joinpacap.org)) to find a contact person for each county.

