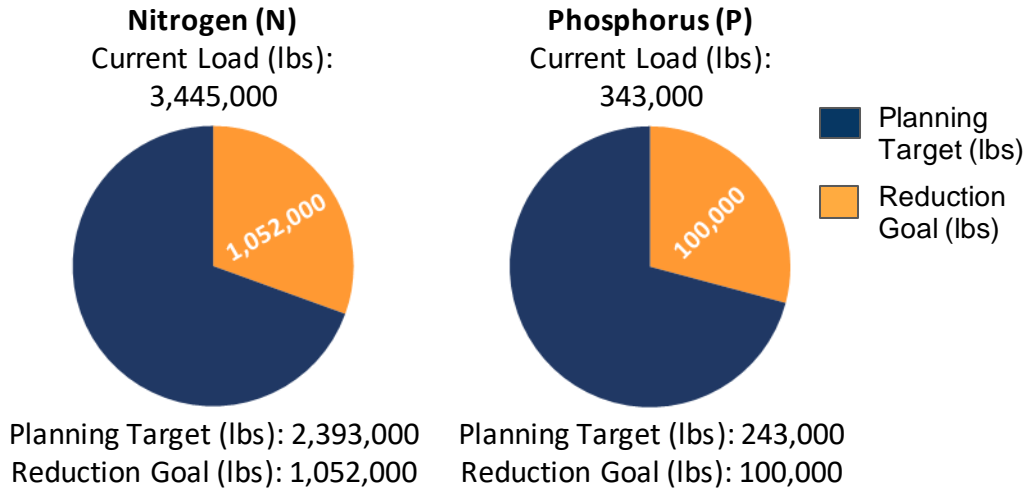


# Tioga County, Pennsylvania

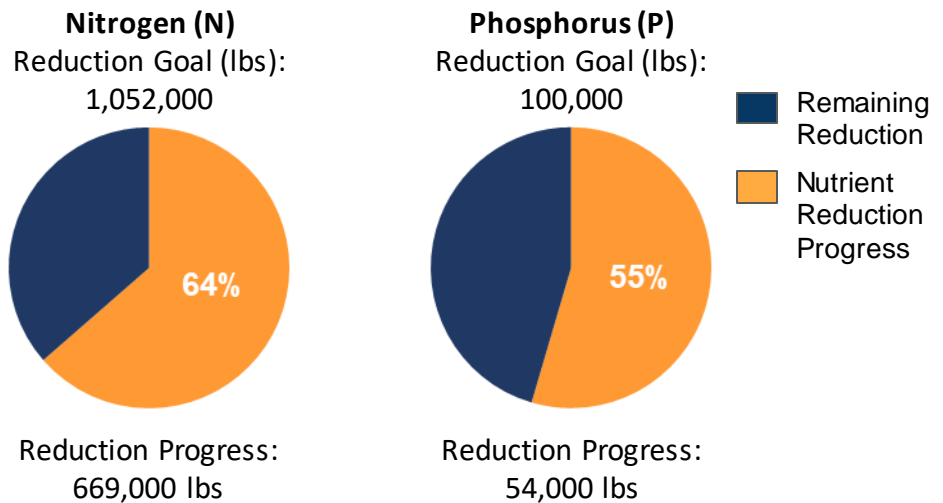
## Current Conditions

Tioga County is one of 34 counties in Pennsylvania's Chesapeake Bay Watershed that have developed Countywide Action Plans. Current loading rates are 3.45M lbs of nitrogen and 343K lbs of phosphorus annually. By 2025 Tioga County needs to reduce 1.05M lbs of nitrogen and 100K lbs of phosphorus.



## Pollutant Reduction Progress

By 2025, Tioga County needs to reduce 1.05M lbs of nitrogen and 100K lbs of phosphorus. Tioga County has developed a plan to reduce 669K lbs of nitrogen, which is 64% of the goal and 54K lbs of phosphorus, which is 55% of the goal.

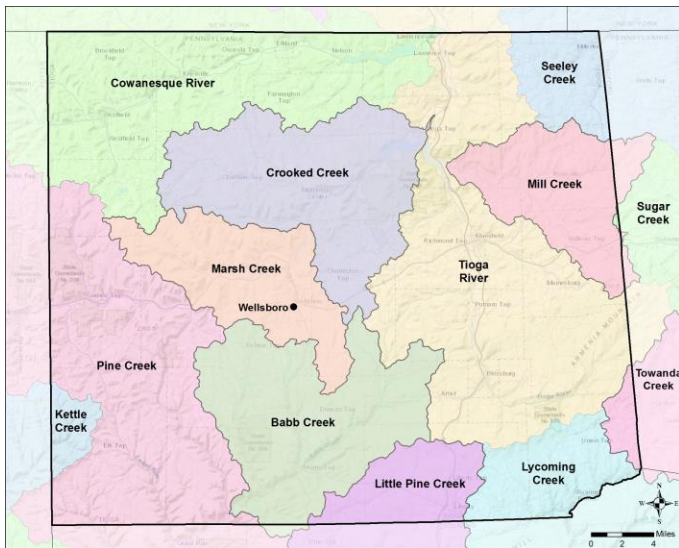


## Sector Reductions

Tioga County has identified reductions within four sectors within their planning template: agriculture, developed, natural, and septic. Projected land use changes and population changes results in increases within the wastewater sector. Tioga County has identified practices that result in total reductions of 669K lbs of nitrogen and 54K lbs of phosphorus.

Sector	Nitrogen (lbs.)	Phosphorus (lbs.)
Agriculture	-571,000	-35,000
Developed	-23,000	-2,000
Natural	-96,000	-19,000
Septic	-80	-
Wastewater	+22,000	+2,000
<b>Total Reductions</b>	<b>-669,000</b>	<b>-54,000</b>

# Tioga County Watershed Map

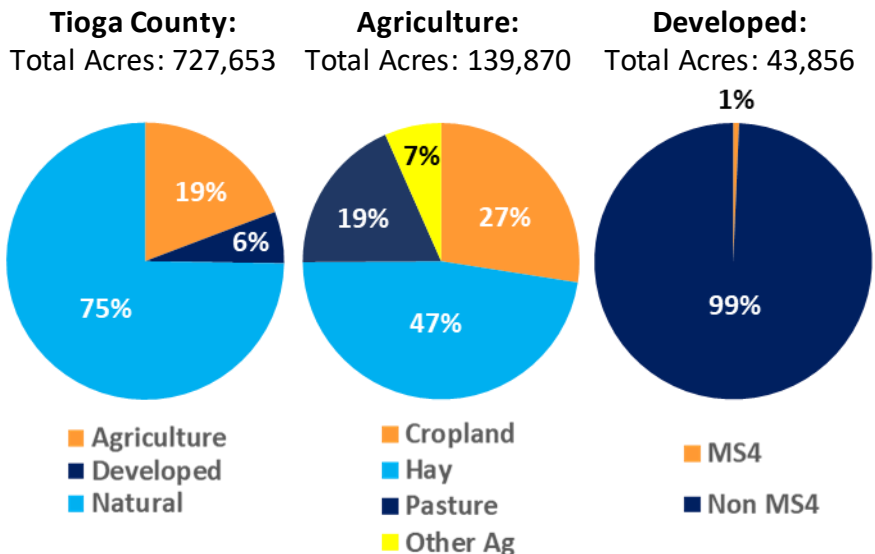


## Information About the Watersheds

Tioga County contains 10 major watersheds: Babb Creek, Cowanesque River, Crooked Creek, Pine Creek, Little Pine Creek, Lycoming Creek, Marsh Creek, Mill Creek, Seeley Creek, and Tioga River. Watersheds in Tioga County have elevated levels of nitrogen, phosphorus, and sediment. Of the 1,847 total stream miles in Tioga County, approximately 12% have degraded aquatic communities due to causes such as disturbance, siltation (excessive sediment), metals, nutrient pollution and others.

## County Land Use:

Tioga County has a total acreage of 727,653 acres in the Bay watershed. Agricultural land represents 19% of the total land with 139,870 total acres. Developed land represents another 6% of the total land in Tioga County. Natural land, which is made up of forests, stream, and wetlands, represents the remaining 75% of the land in Tioga County. Hay makes up a majority of the Agriculture sector with 66,337 acres. The developed sector is mostly Non- Municipal Separate Storm Sewer Systems (MS4s) (99%) 43,558 acres with a very small portion of MS4s (1%) 298 acres.



## Local Benefits:

Storm events are the number one way for nutrients and sediment to enter waterways. Increased runoff impacts: flooding, water quality, habitat, etc. Pollutants enter the waterways by two methods: overland runoff or leaching into groundwater.



Flooding affects safety, property, infrastructure, and economics.



Tioga County relies on local water sources to supply drinking water to its residents.



Just like humans, Tioga County's livestock depend on clean water.

## Learn more and Get Involved

To learn more about the Countywide Action Plans, visit DEPs Countywide Action Plans website: [www.dep.pa.gov/pacountywideactionplans.org](http://www.dep.pa.gov/pacountywideactionplans.org)

To learn more about how to get involved, go to the Join In website ([www.dep.pa.gov/joinpacap.org](http://www.dep.pa.gov/joinpacap.org)) to find a contact person for each county.

