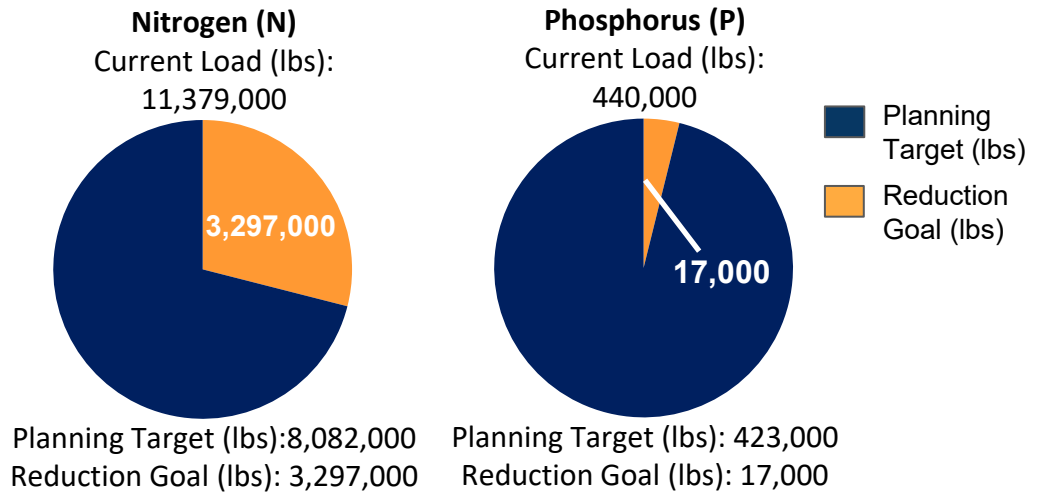


York County, Pennsylvania

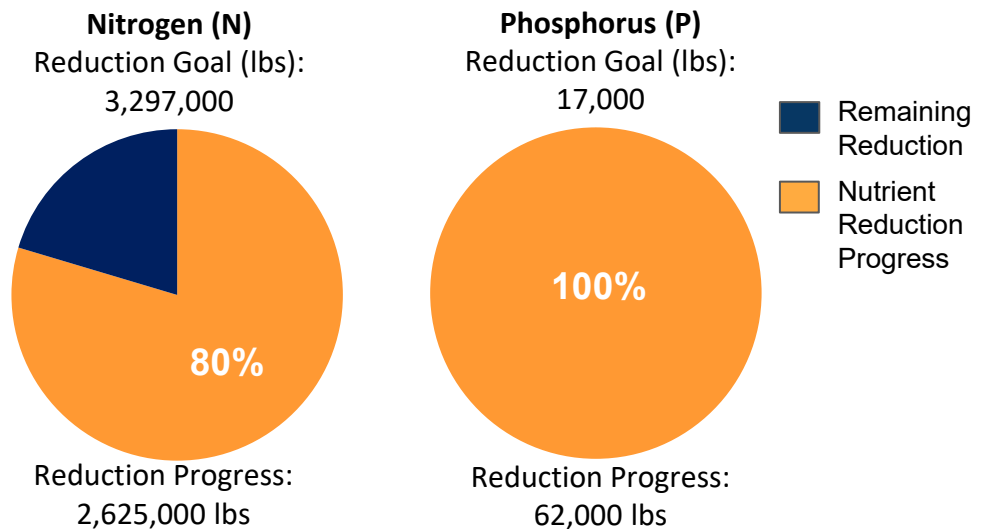
Current Conditions

York County is one of 34 counties in Pennsylvania's Chesapeake Bay Watershed that have developed Countywide Action Plans. Current loading rates are 11.38M lbs of nitrogen and 440K lbs of phosphorus annually. By 2025 York County needs to reduce 3.3M lbs of nitrogen and 17K lbs of phosphorus.



Pollutant Reduction Progress

By 2025, York County needs to reduce 3.3M lbs of nitrogen and 17K lbs of phosphorus. York County has developed a plan to reduce 2.6M lbs of nitrogen, which is 80% of the goal and 62K lbs of phosphorus, which is over 100% of the goal.

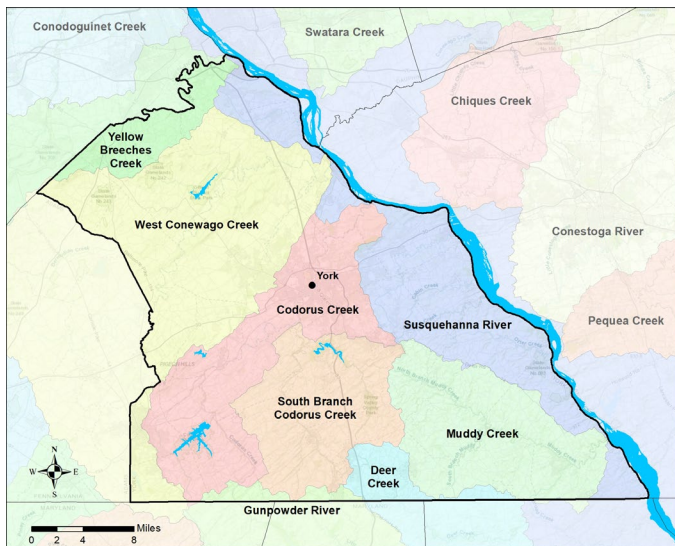


Sector Reductions

York County has identified reductions within three sectors within their planning template: agriculture, developed and natural. Projected land use changes and population changes results in increases within the septic and wastewater sectors. York County has identified practices that result in total reductions of 2.6M lbs of nitrogen and 62K lbs of phosphorus.

Sector	Nitrogen (lbs.)	Phosphorus (lbs.)
Agriculture	-2,683,000	-58,000
Developed	-47,000	-3,000
Natural	-84,000	-22,000
Septic	+6,000	0
Wastewater	+183,000	+21,000
Total Reductions	-2,625,000	-62,000

York County Watershed Map



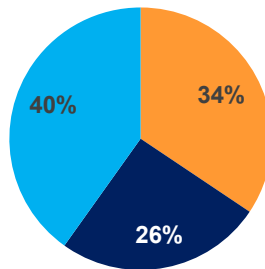
Information About the Watersheds

York County contains 8 major watersheds: Codorus Creek, South Branch Codorus Creek, Deer Creek, Gunpowder River, Muddy Creek, West Conewago Creek, Yellow Breeches Creek, and Susquehanna River. Watersheds in York County have elevated levels of nitrogen, phosphorus, and sediment. Of the 1,670 total stream miles in York County, approximately 25% have degraded aquatic communities due to causes such as disturbance, siltation (excessive sediment), metals, nutrient pollution and others

County Land Use:

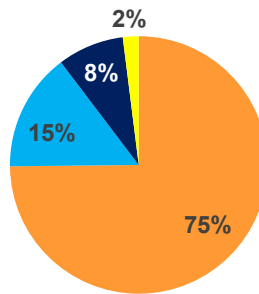
York County has a total acreage of 582,859 acres. Agricultural land represents 34% of the total land with 200,469 total acres. Developed land represents another 26% of the total land in York County. Natural land, which is made up of forests, stream, and wetlands, represents the remaining 40% of the land in York County. Cropland makes up a majority of the Agriculture sector with 150,022 acres. The developed sector is almost half Municipal Separate Storm Sewer Systems (MS4s) (47%) 69,161 acres and half Non-MS4s (53%) 79,274 acres

York County:
Total Acres: 582,859



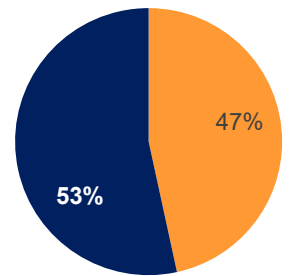
- Agriculture
- Developed
- Natural

Agriculture:
Total Acres: 200,469



- Cropland
- Hay
- Pasture
- Other Ag

Developed:
Total Acres: 148,434



- MS4
- Non-MS4

Local Benefits:

Storm events are the number one way for nutrients and sediment to enter waterways. Increased runoff impacts: flooding, water quality, habitat, etc. Pollutants enter the waterways by two methods: overland runoff or leaching into groundwater.



Flooding affects safety, property, infrastructure, and economics.



York County relies on local water sources to supply drinking water to its residents.



Just like humans, York County's livestock depend on clean water.

Learn more and Get Involved

To learn more about the Countywide Action Plans, visit DEPs Countywide Action Plans website: dep.pa.gov/cap

