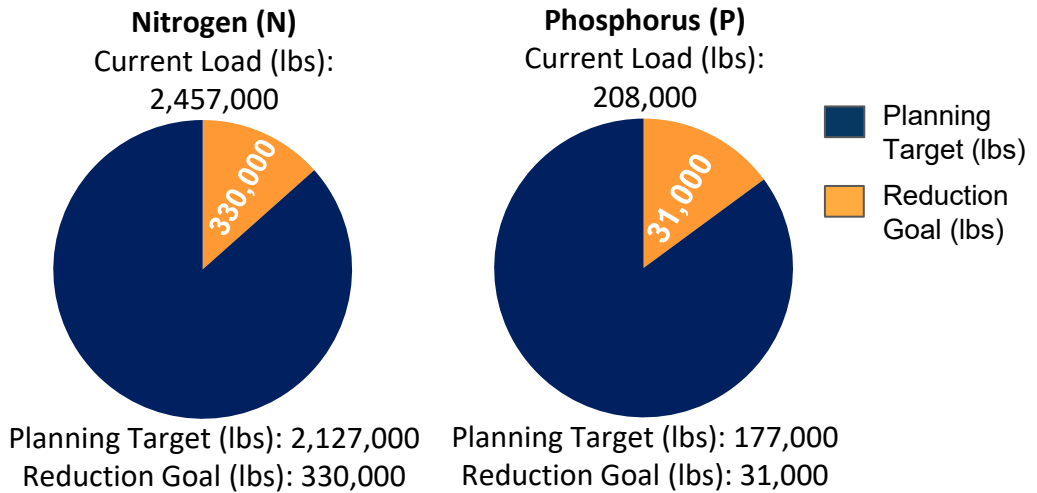


Lackawanna County, Pennsylvania

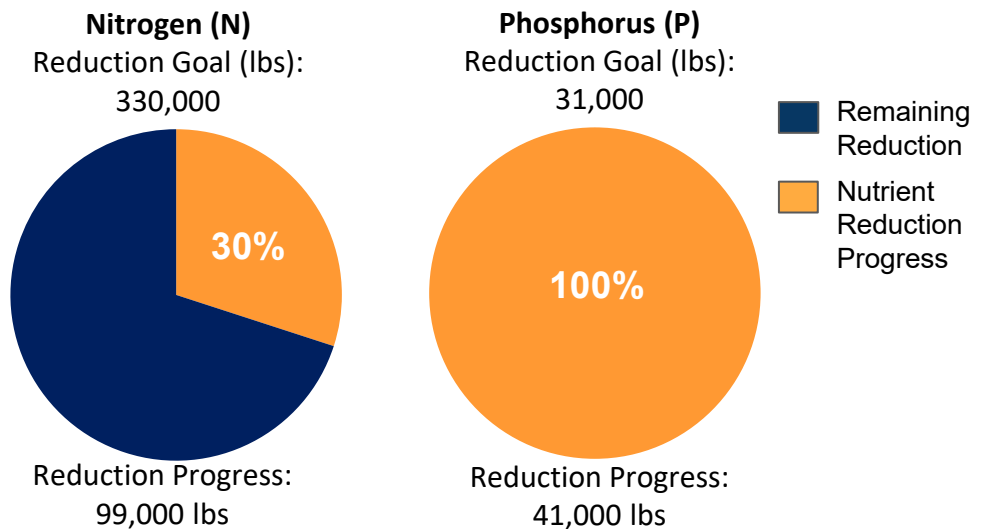
Current Conditions

Lackawanna County is one of 34 counties in Pennsylvania's Chesapeake Bay Watershed that have developed Countywide Action Plans. Current loading rates are 2.46M lbs of nitrogen and 208K lbs of phosphorus annually. By 2025 Lackawanna County needs to reduce 330K lbs of nitrogen and 31K lbs of phosphorus.



Pollutant Reduction Progress

By 2025, Lackawanna County needs to reduce 330K lbs of nitrogen and 31K lbs of phosphorus. Lackawanna County has developed a plan to reduce 99K lbs of nitrogen, which is 30% of the goal and 41K lbs of phosphorus, which is over 100% of the goal.

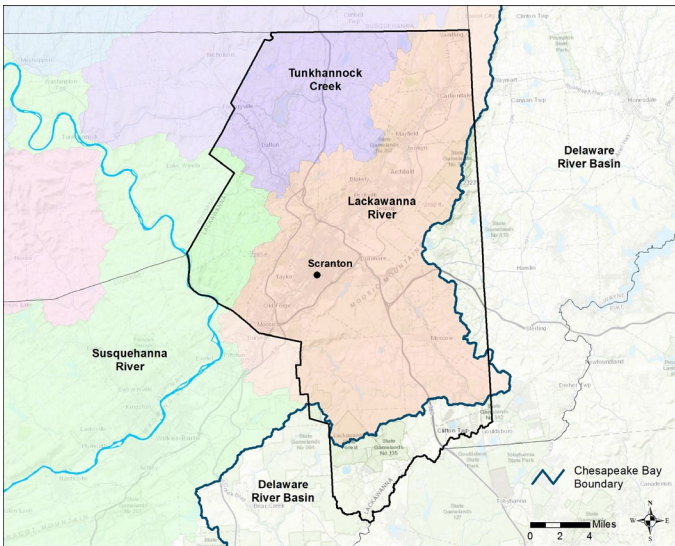


Sector Reductions

Lackawanna County has identified reductions within three sectors within their planning template: agriculture, developed and natural. Projected land use changes and population changes results in increases within the wastewater sector. Lackawanna County has identified practices that result in total reductions of 99K lbs of nitrogen and 41 lbs of phosphorus.

Sector	Nitrogen (lbs.)	Phosphorus (lbs.)
Agriculture	-91,000	-7,000
Developed	-21,000	-2,000
Natural	-10,000	-6,000
Septic	0	0
Wastewater	+22,000	-27,000
Total Reductions	-99,000	-41,000

Lackawanna County Watershed Map



Information About the Watersheds

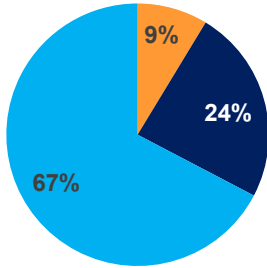
Lackawanna County contains 3 major watersheds: Tunkhannock Creek, Lackawanna River, and Susquehanna River. Watersheds in Lackawanna County have elevated levels of nitrogen, phosphorus, and sediment. Of the 641 total stream miles in Lackawanna County, approximately 22% have degraded aquatic communities due to causes such as disturbance, siltation (excessive sediment), metals, nutrient pollution and others.

County Land Use:

Lackawanna County has a total acreage of 252,273 acres in the Bay watershed.

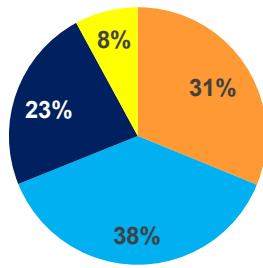
Agricultural land represents 9% of the total land with 21,984 total acres. Developed land represents another 24% of the total land in Lackawanna County. Natural land, which is made up of forests, stream, and wetlands, represents the remaining 67% of the land in Lackawanna County. Hay makes up a majority of the Agriculture sector with 8,259 acres. The developed sector is mostly Non- Municipal Separate Storm Sewer Systems (MS4s) (78%) 47,240 acres and a smaller portion of MS4 (22%) 13,295 acres.

Lackawanna County:
Total Acres: 252,273



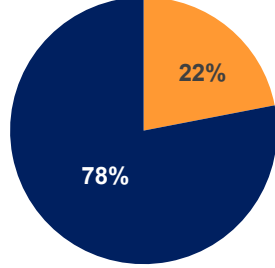
■ Agriculture
■ Developed
■ Natural

Agriculture:
Total Acres: 21,984



■ Cropland
■ Hay
■ Pasture
■ Other Ag

Developed:
Total Acres: 60,353



■ MS4
■ Non-MS4

Local Benefits:

Storm events are the number one way for nutrients and sediment to enter waterways. Increased runoff impacts: flooding, water quality, habitat, etc. Pollutants enter the waterways by two methods: overland runoff or leaching into groundwater.



Flooding affects safety, property, infrastructure, and economics.



Lackawanna County relies on local water sources to supply drinking water to its residents.



Just like humans, Lackawanna County's livestock depend on clean water.

Learn more and Get Involved

To learn more about the Countywide Action Plans, visit DEPs Countywide Action Plans website: dep.pa.gov/cap

