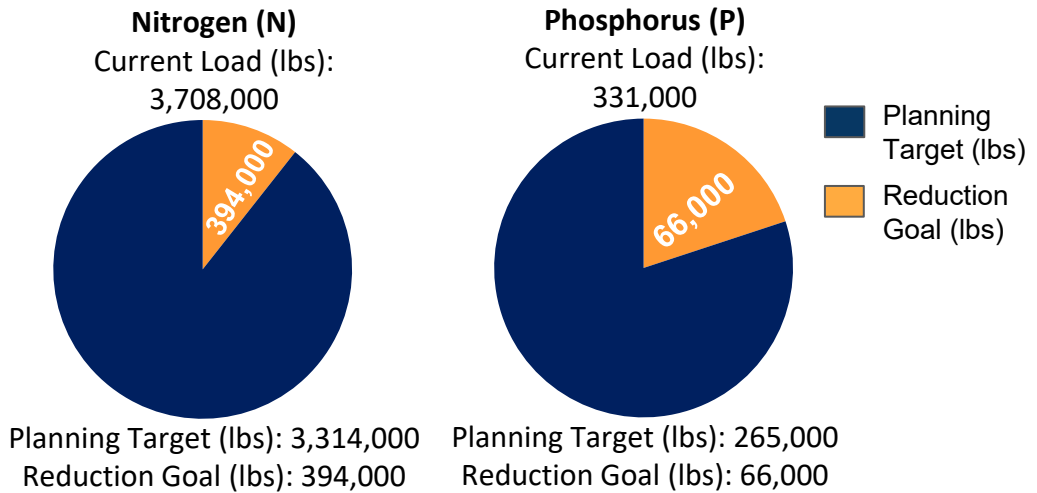


# Blair County, Pennsylvania

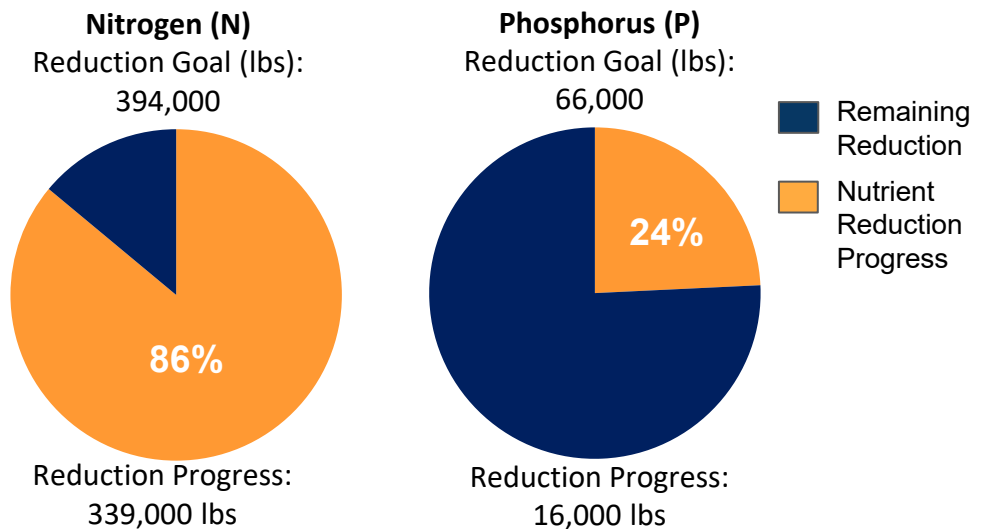
## Current Conditions

Blair County is one of 34 counties in Pennsylvania's Chesapeake Bay Watershed that have developed Countywide Action Plans. Current loading rates are 3.71M lbs of nitrogen and 331K lbs of phosphorus annually. By 2025 Blair County needs to reduce 394K lbs of nitrogen and 66K lbs of phosphorus.



## Pollutant Reduction Progress

By 2025, Blair County needs to reduce 394K lbs of nitrogen and 66K lbs of phosphorus. Blair County has developed a plan to reduce 339K lbs of nitrogen, which is 86% of the goal and 16K lbs of phosphorus, which is 24% of the goal.

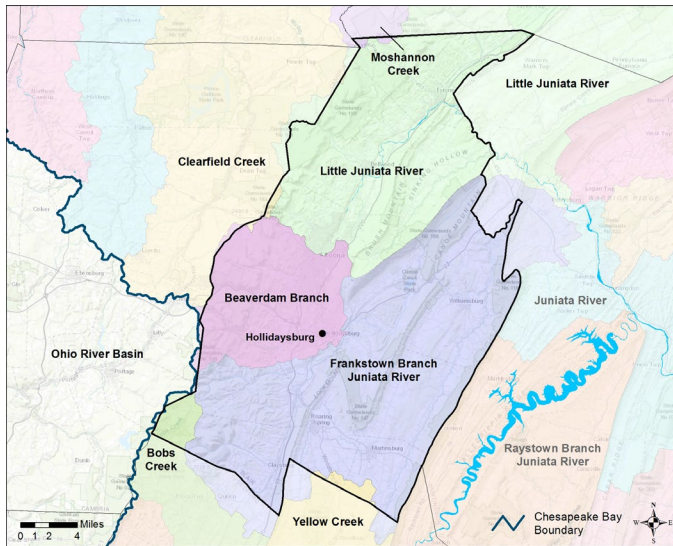


## Sector Reductions

Blair County has identified reductions within three sectors within their planning template: agriculture, developed and natural. Projected land use changes and population changes results in increases within the septic sector. Blair County has identified practices that result in total reductions of 339K lbs of nitrogen and 16K lbs of phosphorus.

Sector	Nitrogen (lbs.)	Phosphorus (lbs.)
Agriculture	-308,000	-8,000
Developed	-11,000	-1,000
Natural	-20,000	-7,000
Septic	+1,000	0
Wastewater	0	0
<b>Total Reductions</b>	<b>-339,000</b>	<b>-16,000</b>

# Blair County Watershed Map



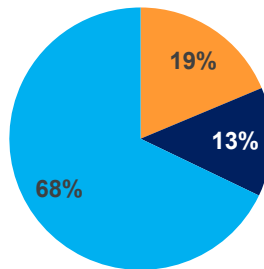
## Information About the Watersheds

Blair County contains 3 major watersheds: Little Juniata River, Beaverdam Branch, and Frankstown Branch Juniata River. It also includes small portions of the Moshannon Creek, Bobs Creek, and Yellow Creek watersheds. Watersheds in Blair County have elevated levels of nitrogen, phosphorus, and sediment. Of the 1,045 total stream miles in Blair County, approximately 9% have degraded aquatic communities due to causes such as siltation (excessive sediment), metals, nutrient pollution and others.

## County Land Use:

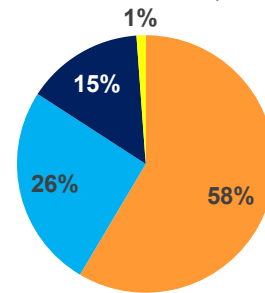
Blair County has a total acreage of 337,321 acres. Agricultural land represents 19% of the total land with 63,048 total acres. Developed land represents another 13% of the total land in Blair County. Natural land, which is made up of forests, stream, and wetlands, represents the remaining 68% of the land in Blair County. Cropland makes up a majority of the Agriculture sector with 36,904 acres. The developed sector is mostly Non- Municipal Separate Storm Sewer Systems (MS4s) (80%) 36,318 acres and a smaller portion of MS4 (20%) 8,986 acres.

**Blair County:**  
Total Acres: 337,321



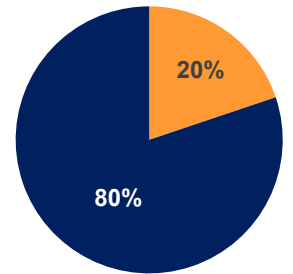
- Agriculture
- Developed
- Natural

**Agriculture:**  
Total Acres: 63,048



- Cropland
- Hay
- Pasture
- Other Ag

**Developed:**  
Total Acres: 45,304



- MS4
- Non-MS4

## Local Benefits:

Storm events are the number one way for nutrients and sediment to enter waterways. Increased runoff impacts: flooding, water quality, habitat, etc. Pollutants enter the waterways by two methods: overland runoff or leaching into groundwater.



Flooding affects safety, property, infrastructure, and economics.



Blair County relies on local water sources to supply drinking water to its residents.



Just like humans, Blair County's livestock depend on clean water.

## Learn more and Get Involved

To learn more about the Countywide Action Plans, visit DEPs Countywide Action Plans website: [dep.pa.gov/cap](http://dep.pa.gov/cap)

