



**AUTHORIZATION TO DISCHARGE UNDER THE
NATIONAL POLLUTANT DISCHARGE ELIMINATION SYSTEM
DISCHARGE REQUIREMENTS FOR PUBLICLY OWNED
TREATMENT WORKS (POTWs)**

NPDES PERMIT NO: PA0026085, Amendment No. 1

In compliance with the provisions of the Clean Water Act, 33 U.S.C. Section 1251 *et seq.* ("the Act") and Pennsylvania's Clean Streams Law, as amended, 35 P.S. Section 691.1 *et seq.*,

**Upper Merion Municipal Utility Authority
175 W Valley Forge Road
King Of Prussia, PA 19406**

is authorized to discharge from a facility known as **Matsunk WPCC**, located in **Upper Merion Township, Montgomery County**, to **Frog Run, Tributary to Schuylkill River** in Watershed(s) **3F – Lower Schuylkill** in accordance with effluent limitations, monitoring requirements and other conditions set forth in Parts A, B and C hereof.

THIS PERMIT SHALL BECOME EFFECTIVE ON _____

THIS PERMIT SHALL EXPIRE AT MIDNIGHT ON **JUNE 30, 2018**

The authority granted by this permit is subject to the following further qualifications:

1. If there is a conflict between the application, its supporting documents and/or amendments and the terms and conditions of this permit, the terms and conditions shall apply.
2. Failure to comply with the terms, conditions or effluent limitations of this permit is grounds for enforcement action; for permit termination, revocation and reissuance, or modification; or for denial of a permit renewal application. (40 CFR 122.41(a))
3. A complete application for renewal of this permit, or notice of intent to cease discharging by the expiration date, must be submitted to DEP at least 180 days prior to the above expiration date (unless permission has been granted by DEP for submission at a later date), using the appropriate NPDES permit application form. (40 CFR 122.41(b), 122.21(d))

In the event that a timely and complete application for renewal has been submitted and DEP is unable, through no fault of the permittee, to reissue the permit before the above expiration date, the terms and conditions of this permit, including submission of the Discharge Monitoring Reports (DMRs), will be automatically continued and will remain fully effective and enforceable against the discharger until DEP takes final action on the pending permit application. (25 Pa. Code 92a.7(b), (c))

4. This NPDES permit does not constitute authorization to construct or make modifications to wastewater treatment facilities necessary to meet the terms and conditions of this permit.

DATE PERMIT ISSUED June 11, 2013

ISSUED BY /s/

DATE PERMIT AMENDMENT ISSUED August 5, 2014

Jenifer L. Fields, P.E.
Clean Water Program Manager
Southeast Regional Office

PART A - EFFLUENT LIMITATIONS, MONITORING, RECORDKEEPING AND REPORTING REQUIREMENTS

I. A. For Outfall 002, Latitude 40° 5' 37.46", Longitude 75° 19' 38.81", River Mile Index 0.4, Stream Code 00942

Receiving Waters: Frog Run, Tributary to Schuylkill River

Type of Effluent: Wastewater from Matsunk Water Pollution Control Facility

1. The permittee is authorized to discharge during the period from July 1, 2013 through June 30, 2014.
2. Based on the anticipated wastewater characteristics and flows described in the permit application and its supporting documents and/or amendments, the following effluent limitations and monitoring requirements apply (see also Additional Requirements and Footnotes).

Parameter	Effluent Limitations						Monitoring Requirements	
	Mass Units (lbs/day) ⁽¹⁾		Concentrations (mg/L)				Minimum ⁽²⁾ Measurement Frequency	Required Sample Type
	Average Monthly	Weekly Average	Minimum	Average Monthly	Weekly Average	Instant. Maximum		
Flow (MGD)	Report	Report Daily Max	XXX	XXX	XXX	XXX	Continuous	Recorded
pH (S.U.)	XXX	XXX	6.0	XXX	XXX	9.0	1/day	Grab
Dissolved Oxygen	XXX	XXX	4.0	XXX	XXX	XXX	1/day	Grab
Total Residual Chlorine	XXX	XXX	XXX	0.5	XXX	1.2	1/day	Grab
CBOD5 Influent	Report	XXX	XXX	Report	XXX	XXX	1/day	24-Hr Composite
CBOD5 May 1 - Oct 31	1,033	1,549	XXX	18	27	36	1/day	24-Hr Composite
CBOD5 Nov 1 - Apr 30	1,434	2,180	XXX	25	38	50	1/day	24-Hr Composite
BOD5 Influent	Report	XXX	XXX	Report	XXX	XXX	1/week	24-Hr Composite
Total Suspended Solids Influent	Report	XXX	XXX	Report	XXX	XXX	1/day	24-Hr Composite

Outfall 002, Continued (from July 1, 2013 through June 30, 2014)

Parameter	Effluent Limitations						Monitoring Requirements	
	Mass Units (lbs/day) ⁽¹⁾		Concentrations (mg/L)				Minimum ⁽²⁾ Measurement Frequency	Required Sample Type
	Average Monthly	Weekly Average	Minimum	Average Monthly	Weekly Average	Instant. Maximum		
Total Suspended Solids	1,721	2,582	XXX	30	45	60	1/day	24-Hr Composite
Fecal Coliform (CFU/100 ml)	XXX	XXX	XXX	200 Geo Mean	XXX	1,000 (*)	1/day	Grab
Ammonia-Nitrogen May 1 - Oct 31	344	XXX	XXX	6.0	XXX	12.0	1/day	24-Hr Composite
Ammonia-Nitrogen Nov 1 - Apr 30	1,033	XXX	XXX	18.0	XXX	36.0	1/day	24-Hr Composite
Total Phosphorus	Report	XXX	XXX	Report	XXX	XXX	1/month	24-Hr Composite
PCBs (Dry Weather) (pg/L)	XXX	XXX	XXX	Report Daily Max	XXX	XXX	1/year	24-Hr Composite
PCBs (Wet Weather) (pg/L)	XXX	XXX	XXX	Report Daily Max	XXX	XXX	1/year	24-Hr Composite

Samples taken in compliance with the monitoring requirements specified above shall be taken at the following location(s): Outfall 002

(*) See Part C Requirement I.G for instructions regarding October thru April reporting of maximum fecal coliform values

PART A - EFFLUENT LIMITATIONS, MONITORING, RECORDKEEPING AND REPORTING REQUIREMENTS

I. B. For Outfall 002, Latitude 40° 5' 37.46", Longitude 75° 19' 38.81", River Mile Index 0.4, Stream Code 00942

Receiving Waters: Unnamed Tributary to Schuylkill River

Type of Effluent: Wastewater from Matsunk Water Pollution Control Facility

1. The permittee is authorized to discharge during the period from July 1, 2014 through June 30, 2018.
2. Based on the anticipated wastewater characteristics and flows described in the permit application and its supporting documents and/or amendments, the following effluent limitations and monitoring requirements apply (see also Additional Requirements and Footnotes).

Parameter	Effluent Limitations						Monitoring Requirements	
	Mass Units (lbs/day) ⁽¹⁾		Concentrations (mg/L)				Minimum ⁽²⁾ Measurement Frequency	Required Sample Type
	Average Monthly	Weekly Average	Minimum	Average Monthly	Weekly Average	Instant. Maximum		
Flow (MGD)	Report	Report Daily Max	XXX	XXX	XXX	XXX	Continuous	Recorded
pH (S.U.)	XXX	XXX	6.0	XXX	XXX	9.0	1/day	Grab
Dissolved Oxygen	XXX	XXX	4.0	XXX	XXX	XXX	1/day	Grab
Total Residual Chlorine	XXX	XXX	XXX	0.5	XXX	1.2	1/day	Grab
CBOD5 Influent	Report	XXX	XXX	Report	XXX	XXX	1/day	24-Hr Composite
CBOD5 May 1 - Oct 31	1,033	1,549	XXX	18	27	36	1/day	24-Hr Composite
CBOD5 Nov 1 - Apr 30	1,434	2,180	XXX	25	38	50	1/day	24-Hr Composite
BOD5 Influent	Report	XXX	XXX	Report	XXX	XXX	1/week	24-Hr Composite
Total Suspended Solids Influent	Report	XXX	XXX	Report	XXX	XXX	1/day	24-Hr Composite

Outfall 002, Continued (from July 1, 2014 through June 30, 2018)

Parameter	Effluent Limitations						Monitoring Requirements	
	Mass Units (lbs/day) ⁽¹⁾		Concentrations (mg/L)				Minimum ⁽²⁾ Measurement Frequency	Required Sample Type
	Average Monthly	Weekly Average	Minimum	Average Monthly	Weekly Average	Instant. Maximum		
Total Suspended Solids	1,721	2,582	XXX	30	45	60	1/day	24-Hr Composite
Fecal Coliform (CFU/100 ml)	XXX	XXX	XXX	200 Geo Mean	XXX	1,000 (*)	1/day	Grab
Ammonia-Nitrogen May 1 - Oct 31	344	XXX	XXX	6.0	XXX	12.0	1/day	24-Hr Composite
Ammonia-Nitrogen Nov 1 - Apr 30	1,033	XXX	XXX	18.0	XXX	36.0	1/day	24-Hr Composite
Total Phosphorus	Report	XXX	XXX	Report	XXX	XXX	1/month	24-Hr Composite

Samples taken in compliance with the monitoring requirements specified above shall be taken at the following location(s): Outfall 002

(*) See Part C Requirement I.G for instructions regarding October thru April reporting of maximum fecal coliform values

PART A - EFFLUENT LIMITATIONS, MONITORING, RECORDKEEPING AND REPORTING REQUIREMENTS

I. C. For Outfall 003, Latitude 40° 5' 39.00", Longitude 75° 19' 43.00", River Mile Index 0.4, Stream Code 00942

Receiving Waters: Unnamed Tributary to Schuylkill River

Type of Effluent: Two inlets located in the lower end of the plant driveway or groundwater which infiltrates into the storm sewer pipes.

1. The permittee is authorized to discharge during the period from July 1, 2013 through June 30, 2018.
2. Based on the anticipated wastewater characteristics and flows described in the permit application and its supporting documents and/or amendments, the following effluent limitations and monitoring requirements apply (see also Additional Requirements and Footnotes).

Parameter	Effluent Limitations						Monitoring Requirements	
	Mass Units (lbs/day) ⁽¹⁾		Concentrations (mg/L)				Minimum ⁽²⁾ Measurement Frequency	Required Sample Type
	Average Monthly		Minimum	Annual Average		Instant. Maximum		
pH (S.U.)	XXX	XXX	XXX	Report	XXX	XXX	1/year	Grab
CBOD5	XXX	XXX	XXX	Report	XXX	XXX	1/year	Grab
Chemical Oxygen Demand	XXX	XXX	XXX	Report	XXX	XXX	1/year	Grab
Total Suspended Solids	XXX	XXX	XXX	Report	XXX	XXX	1/year	Grab
Oil and Grease	XXX	XXX	XXX	Report	XXX	XXX	1/year	Grab
Fecal Coliform (CFU/100 ml)	XXX	XXX	XXX	Report	XXX	XXX	1/year	Grab
Total Kjeldahl Nitrogen	XXX	XXX	XXX	Report	XXX	XXX	1/year	Grab
Total Phosphorus	XXX	XXX	XXX	Report	XXX	XXX	1/year	Grab
Dissolved Iron	XXX	XXX	XXX	Report	XXX	XXX	1/year	Grab

Samples taken in compliance with the monitoring requirements specified above shall be taken at the following location(s):

at Outfall 003

**PART A - EFFLUENT LIMITATIONS, MONITORING, RECORDKEEPING AND REPORTING REQUIREMENTS
(Continued)**Additional Requirements

1. The permittee may not discharge:
 - a. Floating solids, scum, sheen or substances that result in observed deposits in the receiving water. (25 Pa Code 92a.41(c))
 - b. Oil and grease in amounts that cause a film or sheen upon or discoloration of the waters of this Commonwealth or adjoining shoreline, or that exceed 15 mg/l as a daily average or 30 mg/l at any time (or lesser amounts if specified in this permit). (25 Pa. Code 92a.47(a)(7) and 95.2(2))
 - c. Substances in concentration or amounts sufficient to be inimical or harmful to the water uses to be protected or to human, animal, plant or aquatic life. (25 Pa Code 93.6(a))
 - d. Foam or substances that produce an observed change in the color, taste, odor or turbidity of the receiving water, unless those conditions are otherwise controlled through effluent limitations or other requirements in this permit. (25 Pa Code 92a.41(c))
2. The monthly average percent removal of BOD₅ or CBOD₅ and TSS must be at least 85% for POTW facilities on a concentration basis except where 25 Pa. Code 92a.47(g) and (h) are applicable to facilities with combined sewer overflows (CSOs) or as otherwise specified in this permit. (25 Pa. Code 92a.47(a)(3))
3. If the permit requires the reporting of average weekly statistical results, the maximum weekly average concentration and maximum weekly average mass loading shall be reported, regardless of whether the results are obtained for the same or different weeks.
4. The permittee shall monitor the sewage effluent discharge(s) for the effluent parameters identified in the Part A limitations table(s) during all bypass events at the facility, using the sample types that are specified in the limitations table(s). Where the required sample type is "composite", the permittee must commence sample collection within one hour of the start of the bypass, wherever possible. The results shall be reported on the Daily Effluent Monitoring supplemental form (3800-FM-BPNPSM0435) and be incorporated into the calculations used to report self-monitoring data on Discharge Monitoring Reports (DMRs).

Footnotes

- (1) When sampling to determine compliance with mass effluent limitations, the discharge flow at the time of sampling must be measured and recorded.
- (2) This is the minimum number of sampling events required. Permittees are encouraged, and it may be advantageous in demonstrating compliance, to perform more than the minimum number of sampling events.

Supplemental Information

- (1) The hydraulic design capacity of 6.880000 million gallons per day for the treatment facility is used to prepare the annual Municipal Wasteload Management Report to help determine whether a "hydraulic overload" situation exists, as defined in Title 25 Pa. Code Chapter 94.
- (2) The effluent limits for Outfall 002 were determined using an annual average discharge rate of 5.5 million gallons per day and maximum monthly discharge rate of 6.88 million gallons per day.
- (3) The organic design capacity of 11400.00 lbs BOD₅ per day for the treatment facility is used to prepare the annual Municipal Wasteload Management Report to determine whether an "organic overload" condition exists, as defined in 25 Pa. Code Chapter 94.

II. DEFINITIONS

At Outfall (XXX) means a sampling location in outfall line XXX below the last point at which wastes are added to outfall line (XXX), or where otherwise specified.

Average refers to the use of an arithmetic mean, unless otherwise specified in this permit. (40 CFR 122.41(l)(4)(iii))

Best Management Practices (BMPs) means schedules of activities, prohibitions of practices, maintenance procedures and other management practices to prevent or reduce the pollution to surface waters of the Commonwealth. BMPs also include treatment requirements, operating procedures and practices to control plant site runoff, spillage or leaks, sludge or waste disposal, or drainage from raw material storage. (25 Pa. Code 92a.2)

Bypass means the intentional diversion of waste streams from any portion of a treatment facility. (40 CFR 122.41(m)(1)(i))

Calendar Week is defined as the seven consecutive days from Sunday through Saturday, unless the permittee has been given permission by DEP to provide weekly data as Monday through Friday based on showing excellent performance of the facility and a history of compliance. In cases when the week falls in two separate months, the month with the most days in that week shall be the month for reporting.

Clean Water Act means the Federal Water Pollution Control Act, as amended (33 U.S.C.A. §§1251 to 1387).

Composite Sample (for all except GC/MS volatile organic analysis) means a combination of individual samples (at least eight for a 24-hour period or four for an 8-hour period) of at least 100 milliliters (mL) each obtained at spaced time intervals during the compositing period. The composite must be flow-proportional; either the volume of each individual sample is proportional to discharge flow rates, or the sampling interval is proportional to the flow rates over the time period used to produce the composite. (EPA Form 2C)

Composite Sample (for GC/MS volatile organic analysis) consists of at least four aliquots or grab samples collected during the sampling event (not necessarily flow proportioned). The samples must be combined in the laboratory immediately before analysis and then one analysis is performed. (EPA Form 2C)

Daily Average Temperature means the average of all temperature measurements made, or the mean value plot of the record of a continuous automated temperature recording instrument, either during a calendar day or during the operating day if flows are of a shorter duration.

Daily Discharge means the discharge of a pollutant measured during a calendar day or any 24-hour period that reasonably represents the calendar day for purposes of sampling. For pollutants with limitations expressed in units of mass, the "daily discharge" is calculated as the total mass of the pollutant discharged over the day. For pollutants with limitations expressed in other units of measurement, the "daily discharge" is calculated as the average measurement of the pollutant over the day. (25 Pa. Code 92a.2, 40 CFR 122.2)

Daily Maximum Discharge Limitation means the highest allowable "daily discharge."

Discharge Monitoring Report (DMR) means the DEP or EPA supplied form(s) for the reporting of self-monitoring results by the permittee. (25 Pa. Code 92a.2 and 40 CFR 122.2)

Estimated Flow means any method of liquid volume measurement based on a technical evaluation of the sources contributing to the discharge including, but not limited to, pump capabilities, water meters and batch discharge volumes.

Geometric Mean means the average of a set of n sample results given by the nth root of their product.

Grab Sample means an individual sample of at least 100 mL collected at a randomly selected time over a period not to exceed 15 minutes. (EPA Form 2C)

Hauled-In Wastes means any waste that is introduced into a treatment facility through any method other than a direct connection to the sewage collection system. The term includes wastes transported to and disposed of within the treatment facility or other entry points within the collection system.

Hazardous Substance means any substance designated under 40 CFR Part 116 pursuant to Section 311 of the Clean Water Act. (40 CFR 122.2)

Immersion Stabilization (i-s) means a calibrated device is immersed in the wastewater until the reading is stabilized.

Indirect Discharger means a non-domestic discharger introducing pollutants to a Publicly Owned Treatment Works (POTW) or other treatment works. (25 Pa. Code 92a.2 and 40 CFR 122.2)

Industrial User means a source of Indirect Discharge. (40 CFR 403.3)

Instantaneous Maximum Effluent Limitation means the highest allowable discharge of a concentration or mass of a substance at any one time as measured by a grab sample. (25 Pa. Code 92a.2)

Measured Flow means any method of liquid volume measurement, the accuracy of which has been previously demonstrated in engineering practice, or for which a relationship to absolute volume has been obtained.

Monthly Average Discharge Limitation means the highest allowable average of "daily discharges" over a calendar month, calculated as the sum of all "daily discharges" measured during a calendar month divided by the number of "daily discharges" measured during that month. (25 Pa. Code 92a.2)

Municipality means a city, town, borough, county, township, school district, institution, authority or other public body created by or pursuant to State law and having jurisdiction over disposal of sewage, industrial wastes, or other wastes. (25 Pa. Code 92a.2)

Publicly Owned Treatment Works (POTW) means a treatment works as defined by §212 of the Clean Water Act, owned by a state or municipality. The term includes any devices and systems used in the storage, treatment, recycling and reclamation of municipal sewage or industrial wastes of a liquid nature. The term also includes sewers, pipes or other conveyances if they convey wastewater to a POTW providing treatment. The term also means the municipality as defined in section 502(4) of the Clean Water Act, which has jurisdiction over the indirect discharges to and the discharges from such a treatment works. (25 Pa Code 92a.2 and 40 CFR 122.2)

Severe Property Damage means substantial physical damage to property, damage to the treatment facilities that causes them to become inoperable, or substantial and permanent loss of natural resources that can reasonably be expected to occur in the absence of a bypass. Severe property damage does not mean economic loss caused by delays in production. (40 CFR 122.41(m)(1)(ii))

Stormwater means the runoff from precipitation, snow melt runoff, and surface runoff and drainage. (25 Pa. Code 92a.2)

Stormwater Associated With Industrial Activity means the discharge from any conveyance that is used for collecting and conveying stormwater and that is directly related to manufacturing, processing or raw materials storage areas at an industrial plant, and as defined at 40 CFR §122.26(b)(14)(i) – (ix) and (xi) and 25 Pa. Code 92a.2.

Toxic Pollutant means those pollutants, or combinations of pollutants, including disease-causing agents, which after discharge and upon exposure, ingestion, inhalation or assimilation into any organism, either directly from the environment or indirectly by ingestion through food chains may, on the basis of information available to DEP cause death, disease, behavioral abnormalities, cancer, genetic mutations, physiological malfunctions, including malfunctions in reproduction, or physical deformations in these organisms or their offspring. (25 Pa. Code 92a.2)

Weekly Average Discharge Limitation means the highest allowable average of "daily discharges" over a calendar week, calculated as the sum of all "daily discharges" measured during a calendar week divided by the number of "daily discharges" measured during that week.

III. SELF-MONITORING, REPORTING AND RECORDKEEPING

A. Representative Sampling

1. Samples and measurements taken for the purpose of monitoring shall be representative of the monitored activity (40 CFR 122.41(j)(1)). Representative sampling includes the collection of samples, where possible, during periods of adverse weather, changes in treatment plant performance and changes in treatment plant loading. If possible, effluent samples must be collected where the effluent is well mixed near the center of the discharge conveyance and at the approximate mid-depth point, where the turbulence is at a maximum and the settlement of solids is minimized. (40 CFR 122.48 and 25 Pa. Code § 92a.61)

2. Records Retention (40 CFR 122.41(j)(2))

Except for records of monitoring information required by this permit related to the permittee's sludge use and disposal activities which shall be retained for a period of at least 5 years, all records of monitoring activities and results (including all original strip chart recordings for continuous monitoring instrumentation and calibration and maintenance records), copies of all reports required by this permit, and records of all data used to complete the application for this permit shall be retained by the permittee for 3 years from the date of the sample measurement, report or application, unless a longer retention period is required by the permit. The 3-year period shall be extended as requested by DEP or the EPA Regional Administrator.

3. Recording of Results (40 CFR 122.41(j)(3))

For each measurement or sample taken pursuant to the requirements of this permit, the permittee shall record the following information:

- a. The exact place, date and time of sampling or measurements.
- b. The person(s) who performed the sampling or measurements.
- c. The date(s) the analyses were performed.
- d. The person(s) who performed the analyses.
- e. The analytical techniques or methods used; and the associated detection level.
- f. The results of such analyses.

4. Test Procedures (40 CFR 122.41(j)(4))

Facilities that test or analyze environmental samples used to demonstrate compliance with this permit shall be in compliance with laboratory accreditation requirements of Act 90 of 2002 (27 Pa. C.S. §§4101-4113) and 25 Pa. Code Chapter 252, relating to environmental laboratory accreditation. Unless otherwise specified in this permit, the test procedures for the analysis of pollutants shall be those approved under 40 CFR Part 136 (or in the case of sludge use or disposal, approved under 40 CFR Part 136, unless otherwise specified in 40 CFR Part 503 or Subpart J of 25 Pa. Code Chapter 271), or alternate test procedures approved pursuant to those parts, unless other test procedures have been specified in this permit.

5. Quality/Assurance/Control

In an effort to assure accurate self-monitoring analyses results:

- a. The permittee, or its designated laboratory, shall participate in the periodic scheduled quality assurance inspections conducted by DEP and EPA. (40 CFR 122.41(e), 122.41(i)(3))
- b. The permittee, or its designated laboratory, shall develop and implement a program to assure the quality and accurateness of the analyses performed to satisfy the requirements of this permit, in accordance with 40 CFR Part 136. (40 CFR 122.41(j)(4))

B. Reporting of Monitoring Results

1. The permittee shall effectively monitor the operation and efficiency of all wastewater treatment and control facilities, and the quantity and quality of the discharge(s) as specified in this permit. (40 CFR 122.41(e), 122.44(i)(1))
2. Discharge Monitoring Reports (DMRs) must be completed in accordance with DEP's published DMR Instructions (3800-BPNPSM-0463). DMRs are based on calendar reporting periods. DMR(s) must be received by the agency(ies) specified in paragraph 3 below in accordance with the following schedule:
 - Monthly DMRs must be received within 28 days following the end of each calendar month.
 - Quarterly DMRs must be received within 28 days following the end of each calendar quarter, i.e., January 28, April 28, July 28, and October 28.
 - Semiannual DMRs must be received within 28 days following the end of each calendar semiannual period, i.e., January 28 and July 28.
 - Annual DMRs must be received by January 28, unless Part C of this permit requires otherwise.
3. The permittee shall complete all Supplemental Reporting forms (Supplemental DMRs) provided by DEP in this permit (or an approved equivalent), and submit the signed, completed forms as an attachment to the DMR(s). If the permittee elects to use DEP's electronic DMR (eDMR) system, one electronic submission may be made for DMRs and Supplemental DMRs. If paper forms are used, the completed forms shall be mailed to:

Department of Environmental Protection
 Clean Water Program
 2 East Main Street
 Norristown, PA 19401

NPDES Enforcement Branch (3WP42)
 Office of Permits & Enforcement
 Water Protection Division
 U.S. EPA - Region III
 1650 Arch Street
 Philadelphia, PA 19103-2029

4. If the permittee elects to begin using DEP's eDMR system to submit DMRs required by the permit, the permittee shall, to assure continuity of business operations, continue using the eDMR system to submit all DMRs and Supplemental Reports required by the permit, unless the following steps are completed to discontinue use of eDMR:
 - a. The permittee shall submit written notification to the regional office that issued the permit that it intends to discontinue use of eDMR. The notification shall be signed by a principal executive officer or authorized agent of the permittee.
 - b. The permittee shall continue using eDMR until the permittee receives written notification from DEP's Central Office that the facility has been removed from the eDMR system, and electronic report submissions are no longer expected.
5. The completed DMR Form shall be signed and certified by either of the following applicable persons, as defined in 25 Pa. Code 92a.22:
 - For a corporation - by a principal executive officer of at least the level of vice president, or an authorized representative, if the representative is responsible for the overall operation of the facility from which the discharge described in the NPDES form originates.
 - For a partnership or sole proprietorship - by a general partner or the proprietor, respectively.

- For a municipality, state, federal or other public agency - by a principal executive officer or ranking elected official.

If signed by a person other than the above, written notification of delegation of DMR signatory authority must be submitted to DEP in advance of or along with the relevant DMR form. (40 CFR 122.22(b))

6. If the permittee monitors any pollutant at monitoring points as designated by this permit, using analytical methods described in Part A III.A.4. herein, more frequently than the permit requires, the results of this monitoring shall be incorporated, as appropriate, into the calculations used to report self-monitoring data on the DMR. (40 CFR 122.41(l)(4)(ii))

C. Reporting and Notification Requirements

1. **Planned Changes to Physical Facilities** – The permittee shall give notice to DEP as soon as possible but no later than 30 days prior to planned physical alterations or additions to the permitted facility. A permit under 25 Pa. Code Chapter 91 may be required for these situations prior to implementing the planned changes. A permit application, or other written submission to DEP, can be used to satisfy the notification requirements of this section.

Notice is required when:

- a. The alteration or addition to a permitted facility may meet one of the criteria for determining whether a facility is a new source in 40 CFR §122.29(b). (40 CFR 122.41(l)(1)(i))
 - b. The alteration or addition could significantly change the nature or increase the quantity of pollutants discharged. This notification applies to pollutants which are not subject to effluent limitations in this permit. (40 CFR 122.41(l)(1)(ii))
 - c. The alteration or addition results in a significant change in the permittee's sludge use or disposal practices, and such alteration, addition, or change may justify the application of permit conditions that are different from or absent in the existing permit, including notification of additional use or disposal sites not reported during the permit application process or not reported pursuant to an approved land application plan. (40 CFR 122.41(l)(1)(iii))
 - d. The planned change may result in noncompliance with permit requirements. (40 CFR 122.41(l)(2))
 - e. The facility is proposing an expansion or modifications to its treatment processes.
2. **Planned Changes to Waste Stream** – Under the authority of 25 Pa. Code 92a.24(a) and 40 CFR 122.42(b), the permittee shall provide notice to DEP and EPA as soon as possible but no later than 45 days prior to any changes in the volume or pollutant concentration of its influent waste stream as a result of indirect discharges or hauled-in wastes, as specified in paragraphs 2.a. and 2.b., below. Notice shall be provided on the "Planned Changes to Waste Stream" Supplemental Report (3800-FM-BPNPSM0482), available on DEP's website. The permittee shall provide information on the quality and quantity of waste introduced into the POTW, and any anticipated impact of the change on the quantity or quality of effluent to be discharged from the POTW (40 CFR 122.42(b)(3)). The Report shall be sent via Certified Mail or other means to confirm DEP's receipt of the notification. DEP will determine if the submission of an application and receipt of an amended permit is required.
 - a. **Introduction of New Pollutants** (25 Pa. Code 92a.24(a), 40 CFR 122.42(b)(1))

New pollutants are defined as parameters that meet one or more of the following criteria:

- (i) Were not detected in the facilities' influent waste stream as reported in the permit application, or were otherwise not analyzed in the influent and reported to DEP prior to permit issuance;
- (ii) Have not been previously approved to be included in the permittee's influent waste stream by DEP and/or EPA in writing;

- (iii) Are previously unapproved pollutants introduced into the POTW from an indirect discharger which would be subject to Sections 301 and 306 of the Clean Water Act if it were directly discharging those pollutants (40 CFR 122.42(b)(1)).

The permittee shall provide notification of the introduction of new pollutants in accordance with paragraph 2 above. The permittee may not authorize the introduction of new pollutants until the permittee receives DEP's and/or EPA's written approval.

b. Increased Loading of Approved Pollutants (25 Pa. Code 92a.24(a), 40 CFR 122.42(b)(2))

Approved pollutants are defined as parameters that meet one or more of the following criteria:

- (i) Were detected in the facilities' influent waste stream as reported in the permittee's permit application or were otherwise analyzed and reported to DEP prior to permit issuance;
- (ii) Have an effluent limitation or monitoring requirement in this permit;
- (iii) Have been previously approved for the permittee's influent waste stream by DEP in writing.

The permittee shall provide notification of the introduction of increased influent loading (lbs/day) of approved pollutants in accordance with paragraph 2 above when (1) the cumulative increase in influent loading (lbs/day) exceeds 10% of the maximum loading reported in the permit application, or a loading previously approved by DEP, or (2) may cause an exceedance in the effluent of Effluent Limitation Guidelines (ELGs) or limitations in Part A of this permit, or (3) may cause interference or pass through at the POTW, or (4) may cause exceedances of the applicable water quality standards in the receiving stream. Unless specified otherwise in this permit, if DEP and/or EPA does not respond to the notification within 30 days of its receipt, the permittee may proceed with the increase in loading. The acceptance of increased loading of approved pollutants may not result in an exceedance of ELGs or effluent limitations, may not result in a hydraulic or organic overload condition as defined in 25 Pa. Code 94.1, and may not cause exceedances of the applicable water quality standards in the receiving stream.

c. New Information on Existing Discharges

The permittee shall notify DEP and EPA where it discovers new information, not reported previously, on the quality and quantity of the effluent introduced into the POTW by an industrial user or an indirect discharger and the anticipated impact of the change in the quality and quantity of effluent to be discharged from the POTW. (40 CFR 122.41(h) and 122.62)

3. Reporting Requirements for Hauled-In Wastes

a. Receipt of Residual Waste

- (i) The permittee shall document the receipt of all hauled-in residual wastes (including but not limited to wastewater from oil and gas wells, food processing waste, and landfill leachate) received for processing at the treatment facility. The permittee shall report hauled-in residual wastes on a monthly basis to DEP on the "Hauled In Residual Wastes" Supplemental Report (3800-FM-BPNPSM0450) as an attachment to the DMR. If no residual wastes were received during a month, submission of the Supplemental Report is not required.

The following information is required by the Supplemental Report. The information used to develop the Report shall be retained by the permittee for five years from the date of receipt and must be made available to DEP or EPA upon request.

- (1) The dates that residual wastes were received.
- (2) The volume (gallons) of wastes received.

- (3) The license plate number of the vehicle transporting the waste to the treatment facility.
- (4) The permit number(s) of the well(s) where residual wastes were generated, if applicable.
- (5) The name and address of the generator of the residual wastes.
- (6) The type of wastewater.
- (7) Documentation of whether or not a chemical analysis of the residual wastes were reported on a Residual Waste Form 26R, or a separate waste characterization using the parameters from Form 26R.

The transporter of residual waste must maintain these and other records as part of the daily operational record (25 Pa. Code 299.219). If the transporter is unable to provide this information, the residual wastes shall not be accepted by the permittee until such time as the transporter is able to provide the required information.

- (ii) The following conditions apply to the characterization of residual wastes received by the permitted treatment facility:
 - (1) The permitted facility must receive and maintain on file a characterization of the residual wastes it receives from the generator, as required by 25 Pa. Code 287.54. The characterization shall conform to the Bureau of Waste Management's Form 26R except as noted in paragraph (2), below. Each load of residual waste received must be characterized accordingly.
 - (2) For wastewater generated from hydraulic fracturing operations ("frac wastewater") within the first 30 production days of a well site, the characterization may be a general frac wastewater characterization approved by DEP. Thereafter, the characterization must be waste-specific and reported on the Form 26R.

b. Receipt of Municipal Waste

- (i) The permittee shall document the receipt of all hauled-in municipal wastes (including but not limited to septage and liquid sewage sludge) received for processing at the treatment facility. The permittee shall report hauled-in municipal wastes on a monthly basis to DEP on the "Hauled In Municipal Wastes" Supplemental Report (3800-FM-BPNPSM0437) as an attachment to the DMR. If no municipal wastes were received during a month, submission of the Supplemental Report is not required.

The following information is required by the Supplemental Report:

- (1) The dates that municipal wastes were received.
 - (2) The volume (gallons) of wastes received.
 - (3) The BOD₅ concentration (mg/l) and load (lbs) for the wastes received.
 - (4) The location(s) where wastes were disposed of within the treatment facility.
- (ii) Sampling and analysis of hauled-in municipal wastes must be completed to characterize the organic strength of the wastes, unless composite sampling of influent wastewater is performed at a location downstream of the point of entry for the wastes. The influent BOD₅ characterization for the treatment facility, as reported in the annual Municipal Wasteload Management Report per 25 Pa. Code Chapter 94, must be representative of the hauled-in municipal wastes received.

4. Unanticipated Noncompliance or Potential Pollution Reporting

- a. Immediate Reporting - The permittee shall immediately report any incident causing or threatening pollution in accordance with the requirements of 25 Pa. Code Sections 91.33 and 92a.41(b).
- (i) If, because of an accident, other activity or incident a toxic substance or another substance which would endanger users downstream from the discharge, or would otherwise result in pollution or create a danger of pollution or would damage property, the permittee shall immediately notify DEP by telephone of the location and nature of the danger. Oral notification to the Department is required as soon as possible, but no later than 4 hours after the permittee becomes aware of the incident causing or threatening pollution.
 - (ii) If reasonably possible to do so, the permittee shall immediately notify downstream users of the waters of the Commonwealth to which the substance was discharged. Such notice shall include the location and nature of the danger.
 - (iii) The permittee shall immediately take or cause to be taken steps necessary to prevent injury to property and downstream users of the waters from pollution or a danger of pollution and, in addition, within 15 days from the incident, shall remove the residual substances contained thereon or therein from the ground and from the affected waters of this Commonwealth to the extent required by applicable law.
- b. The permittee shall report any noncompliance which may endanger health or the environment in accordance with the requirements of 40 CFR 122.41(l)(6). These requirements include the following obligations:
- (i) 24 Hour Reporting - The permittee shall orally report any noncompliance with this permit which may endanger health or the environment within 24 hours from the time the permittee becomes aware of the circumstances. The following shall be included as information which must be reported within 24 hours under this paragraph (40 CFR 122.41(l)(6)(ii)):
 - (1) Any unanticipated bypass which exceeds any effluent limitation in the permit;
 - (2) Any upset which exceeds any effluent limitation in the permit; and
 - (3) Violation of the maximum daily discharge limitation for any of the pollutants listed in the permit as being subject to the 24-hour reporting requirement.
 - (ii) Written Report - A written submission shall also be provided within 5 days of the time the permittee becomes aware of any noncompliance which may endanger health or the environment. The written submission shall contain a description of the noncompliance and its cause; the period of noncompliance, including exact dates and times, and if the noncompliance has not been corrected, the anticipated time it is expected to continue; and steps taken or planned to reduce, eliminate, and prevent reoccurrence of the noncompliance.
 - (iii) Waiver of Written Report - DEP may waive the written report on a case-by-case basis if the associated oral report has been received within 24 hours from the time the permittee becomes aware of the circumstances which may endanger health or the environment. Unless such a waiver is expressly granted by DEP, the permittee shall submit a written report in accordance with this paragraph. (40 CFR 122.41(l)(6)(iii))

5. Other Noncompliance

The permittee shall report all instances of noncompliance not reported under paragraph C.4 of this section or specific requirements of compliance schedules, at the time DMRs are submitted, on the Non-Compliance Reporting Form (3800-FM-BPNPSM0440). The reports shall contain the information listed in paragraph C.4.b.(ii) of this section. (40 CFR 122.41(l)(7))

PART B

I. MANAGEMENT REQUIREMENTS

- A. Compliance Schedules (25 Pa. Code 92a.51, 40 CFR 122.47(a))
1. The permittee shall achieve compliance with the terms and conditions of this permit within the time frames specified in this permit.
 2. The permittee shall submit reports of compliance or noncompliance, or progress reports as applicable, for any interim and final requirements contained in this permit. Such reports shall be submitted no later than 14 days following the applicable schedule date or compliance deadline. (40 CFR 122.47(a)(4))
- B. Permit Modification, Termination, or Revocation and Reissuance
1. This permit may be modified, terminated, or revoked and reissued during its term in accordance with 25 Pa. Code 92a.72 and 40 CFR 122.41(f).
 2. The filing of a request by the permittee for a permit modification, revocation and reissuance, or termination, or a notification of planned changes or anticipated noncompliance, does not stay any permit condition. (40 CFR 122.41(f))
 3. In the absence of DEP action to modify or revoke and reissue this permit, the permittee shall comply with effluent standards or prohibitions established under Section 307(a) of the Clean Water Act for toxic pollutants within the time specified in the regulations that establish those standards or prohibitions. (40 CFR 122.41(a)(1))
- C. Duty to Provide Information
1. The permittee shall furnish to DEP, within a reasonable time, any information which DEP may request to determine whether cause exists for modifying, revoking and reissuing, or terminating this permit, or to determine compliance with this permit. (40 CFR 122.41(h))
 2. The permittee shall furnish to DEP, upon request, copies of records required to be kept by this permit. (40 CFR 122.41(h))
 3. Other Information - Where the permittee becomes aware that it failed to submit any relevant facts in a permit application, or submitted incorrect information in a permit application or in any report to DEP, it shall promptly submit the correct and complete facts or information. (40 CFR 122.41(l)(8))
 4. The permittee shall provide the following information in the annual Municipal Wasteload Management Report, required under the provisions of Title 25 Pa. Code Chapter 94:
 - a. The requirements identified in 25 Pa. Code 94.12.
 - b. The identity of any indirect discharger(s) served by the POTW which are subject to pretreatment standards adopted under Section 307(b) of the Clean Water Act; the POTW shall also specify the total volume of discharge and estimate concentration of each pollutant discharged into the POTW by the indirect discharger.
 - c. A "Solids Management Inventory" if specified in Part C of this permit.
 - d. The total volume of hauled-in residual and municipal wastes received during the year, by source.
 - e. The Annual Report requirements for permittees required to implement an industrial pretreatment program listed in Part C, as applicable.
- D. General Pretreatment Requirements

1. POTWs shall require indirect dischargers to the treatment works subject to pretreatment standards adopted under Section 307(b) of the Clean Water Act to comply with the reporting requirements of Sections 204(b), 307, and 308 of the Clean Water Act and regulations thereunder.
2. Any POTW (or combination of POTWs operated by the same authority) with a total design flow greater than 5 million gallons per day (MGD) and receiving from industrial users pollutants which pass through or interfere with the operation of the POTW or are otherwise subject to Pretreatment Standards will be required to establish a POTW Pretreatment Program unless specifically exempted by the Approval Authority. A POTW with a design flow of 5 MGD or less may be required to develop a POTW Pretreatment Program if the Approval Authority finds that the nature or volume of the industrial influent, treatment process upsets, violations of effluent limitations, contamination of sludge, or other circumstances warrant in order to prevent interference or pass through. (40 CFR 403.8)
3. Each POTW with an approved Pretreatment Program pursuant to 40 CFR 403.8 shall develop and enforce specific limits to implement the prohibitions listed in 40 CFR 403.5(a)(1) and (b), and shall continue to develop these limits as necessary and effectively enforce such limits. This condition applies, for example, when there are planned changes to the waste stream as identified in Part A III.C.2. If the permittee is required to develop or continue implementation of a Pretreatment Program, detailed requirements will be contained in Part C of this permit.
4. For all POTWs, where pollutants contributed by indirect dischargers result in interference or pass through, and a violation is likely to recur, the permittee shall develop and enforce specific limits for indirect dischargers and other users, as appropriate, that together with appropriate facility or operational changes, are necessary to ensure renewed or continued compliance with this permit or sludge use or disposal practices. Where POTWs do not have an approved Pretreatment Program, the permittee shall submit a copy of such limits to DEP when developed. (25 Pa. Code 92a.47(d))

E. Proper Operation and Maintenance

1. The permittee shall employ operators certified in compliance with the Water and Wastewater Systems Operators Certification Act (63 P.S. §§1001-1015.1).
2. The permittee shall at all times properly operate and maintain all facilities and systems of treatment and control (and related appurtenances) which are installed or used by the permittee to achieve compliance with the terms and conditions of this permit. Proper operation and maintenance includes, but is not limited to, adequate laboratory controls including appropriate quality assurance procedures. This provision also includes the operation of backup or auxiliary facilities or similar systems that are installed by the permittee, only when necessary to achieve compliance with the terms and conditions of this permit. (40 CFR 122.41(e))

F. Duty to Mitigate

The permittee shall take all reasonable steps to minimize or prevent any discharge, sludge use or disposal in violation of this permit that has a reasonable likelihood of adversely affecting human health or the environment. (40 CFR 122.41(d))

G. Bypassing

1. Bypassing Not Exceeding Permit Limitations - The permittee may allow a bypass to occur which does not cause effluent limitations to be exceeded, but only if it also is for essential maintenance to assure efficient operation. These bypasses are not subject to the provisions in paragraphs two, three and four of this section. (40 CFR 122.41(m)(2))
2. Other Bypassing - In all other situations, bypassing is prohibited and DEP may take enforcement action against the permittee for bypass unless:

- a. A bypass is unavoidable to prevent loss of life, personal injury or "severe property damage." (40 CFR 122.41(m)(4)(i)(A))
 - b. There are no feasible alternatives to the bypass, such as the use of auxiliary treatment facilities, retention of untreated wastes, or maintenance during normal periods of equipment downtime. This condition is not satisfied if adequate backup equipment should have been installed in the exercise of reasonable engineering judgment to prevent a bypass which occurred during normal periods of equipment downtime or preventive maintenance. (40 CFR 122.41(m)(4)(i)(B))
 - c. The permittee submitted the necessary notice required in paragraph G.4 below. (40 CFR 122.41(m)(4)(i)(C))
3. DEP may approve an anticipated bypass, after considering its adverse effects, if DEP determines that it will meet the conditions listed in paragraph G.2 above. (40 CFR 122.41(m)(4)(ii))
 4. Notice
 - a. Anticipated Bypass – If the permittee knows in advance of the need for a bypass, it shall submit prior notice, if possible, at least 10 days before the bypass. (40 CFR 122.41(m)(3)(i))
 - b. Unanticipated Bypass
 - (i) The permittee shall submit immediate notice of an unanticipated bypass causing or threatening pollution. The notice shall be in accordance with Part A III.C.4.a.
 - (ii) The permittee shall submit oral notice of any other unanticipated bypass within 24 hours, regardless of whether the bypass may endanger health or the environment or whether the bypass exceeds effluent limitations. The notice shall be in accordance with Part A III.C.4.b.

H. Sanitary Sewer Overflows (SSOs)

An SSO is an overflow of wastewater, or other untreated discharge from a separate sanitary sewer system (which is not a combined sewer system), which results from a flow in excess of the carrying capacity of the system or from some other cause prior to reaching the headworks of the sewage treatment facility. SSOs are not authorized under this permit. The permittee shall immediately report any SSO to DEP in accordance with Part A III.C.4 of this permit.

II. PENALTIES AND LIABILITY

A. Violations of Permit Conditions

Any person violating Sections 301, 302, 306, 307, 308, 318 or 405 of the Clean Water Act or any permit condition or limitation implementing such sections in a permit issued under Section 402 of the Act is subject to civil, administrative and/or criminal penalties as set forth in 40 CFR §122.41(a)(2).

Any person or municipality, who violates any provision of this permit; any rule, regulation or order of DEP; or any condition or limitation of any permit issued pursuant to the Clean Streams Law, is subject to criminal and/or civil penalties as set forth in Sections 602, 603 and 605 of the Clean Streams Law.

B. Falsifying Information

Any person who does any of the following:

- Falsifies, tampers with, or knowingly renders inaccurate any monitoring device or method required to be maintained under this permit, or

- Knowingly makes any false statement, representation, or certification in any record or other document submitted or required to be maintained under this permit (including monitoring reports or reports of compliance or noncompliance)

Shall, upon conviction, be punished by a fine and/or imprisonment as set forth in *18 Pa.C.S.A § 4904* and 40 CFR §122.41(j)(5) and (k)(2).

C. Liability

Nothing in this permit shall be construed to relieve the permittee from civil or criminal penalties for noncompliance pursuant to Section 309 of the Clean Water Act or Sections 602, 603 or 605 of the Clean Streams Law.

Nothing in this permit shall be construed to preclude the institution of any legal action or to relieve the permittee from any responsibilities, liabilities or penalties to which the permittee is or may be subject to under the Clean Water Act and the Clean Streams Law.

D. Need to Halt or Reduce Activity Not a Defense

It shall not be a defense for the permittee in an enforcement action that it would have been necessary to halt or reduce the permitted activity in order to maintain compliance with the conditions of this permit. 40 CFR 122.41(c)

III. OTHER RESPONSIBILITIES

A. Right of Entry

Pursuant to Sections 5(b) and 305 of Pennsylvania's Clean Streams Law, and Title 25 Pa. Code Chapter 92a and 40 CFR §122.41(i), the permittee shall allow authorized representatives of DEP and EPA, upon the presentation of credentials and other documents as may be required by law:

1. To enter upon the permittee's premises where a regulated facility or activity is located or conducted, or where records must be kept under the conditions of this permit; (40 CFR 122.41(i)(1))
2. To have access to and copy, at reasonable times, any records that must be kept under the conditions of this permit; (40 CFR 122.41(i)(2))
3. To inspect at reasonable times any facilities, equipment (including monitoring and control equipment), practices or operations regulated or required under this permit; and (40 CFR 122.41(i)(3))
4. To sample or monitor at reasonable times, for the purposes of assuring permit compliance or as otherwise authorized by the Clean Water Act or the Clean Streams Law, any substances or parameters at any location. (40 CFR 122.41(i)(4))

B. Transfer of Permits

1. Transfers by modification. Except as provided in paragraph 2 of this section, a permit may be transferred by the permittee to a new owner or operator only if this permit has been modified or revoked and reissued, or a minor modification made to identify the new permittee and incorporate such other requirements as may be necessary under the Clean Water Act. (40 CFR 122.61(a))
2. Automatic transfers. As an alternative to transfers under paragraph 1 of this section, any NPDES permit may be automatically transferred to a new permittee if:
 - a. The current permittee notifies DEP at least 30 days in advance of the proposed transfer date in paragraph 2.b. of this section; (40 CFR 122.61(b)(1))

- b. The notice includes the appropriate DEP transfer form signed by the existing and new permittees containing a specific date for transfer of permit responsibility, coverage and liability between them; and (40 CFR 122.61(b)(2))
 - c. DEP does not notify the existing permittee and the proposed new permittee of its intent to modify or revoke and reissue this permit, the transfer is effective on the date specified in the agreement mentioned in paragraph 2.b. of this section. (40 CFR 122.61(b)(3))
 - d. The new permittee is in compliance with existing DEP issued permits, regulations, orders and schedules of compliance, or has demonstrated that any noncompliance with the existing permits has been resolved by an appropriate compliance action or by the terms and conditions of the permit (including compliance schedules set forth in the permit), consistent with 25 Pa. Code 92a.51 (relating to schedules of compliance) and other appropriate Department regulations. (25 Pa. Code 92a.71)
3. In the event DEP does not approve transfer of this permit, the new owner or controller must submit a new permit application.

C. Property Rights

The issuance of this permit does not convey any property rights of any sort, or any exclusive privilege. (40 CFR 122.41(g))

D. Duty to Reapply

If the permittee wishes to continue an activity regulated by this permit after the expiration date of this permit, the permittee must apply for a new permit. (40 CFR 122.41(b))

E. Other Laws

The issuance of this permit does not authorize any injury to persons or property or invasion of other private rights, or any infringement of state or local law or regulations.

IV. ANNUAL FEE

Permittees shall pay an annual fee in accordance with 25 Pa. Code § 92a.62. Annual fee amounts are specified in the following schedule and are due on each anniversary of the effective date of the most recent new or reissued permit. All flows identified in the schedule are annual average design flows. (25 Pa. Code 92a.62)

Small Flow Treatment Facility (SRSTP and SFTF)	\$0
Minor Sewage Facility < 0.05 MGD (million gallons per day)	\$250
Minor Sewage Facility ≥ 0.05 and < 1 MGD	\$500
Minor Sewage Facility with CSO (Combined Sewer Overflow)	\$750
Major Sewage Facility ≥ 1 and < 5 MGD	\$1,250
Major Sewage Facility ≥ 5 MGD	\$2,500
Major Sewage Facility with CSO	\$5,000

As of the effective date of this permit, the facility covered by the permit is classified in the following fee category: **Major Sewage Facility ≥5 MGD**.

Invoices for annual fees will be mailed to permittees approximately three months prior to the due date. In the event that an invoice is not received, the permittee is nonetheless responsible for payment. Throughout a five year permit term, permittees will pay four annual fees followed by a permit renewal application fee in the last year of permit coverage. Permittees may contact the DEP at 717-787-6744 with questions related to annual fees. The fees identified above are subject to change in accordance with 25 Pa. Code 92a.62(e).

Payment for annual fees shall be remitted to DEP at the address below by the anniversary date. Checks should be made payable to the Commonwealth of Pennsylvania.

PA Department of Environmental Protection
Bureau of Point and Non-Point Source Management
Re: Chapter 92a Annual Fee
P.O. Box 8466
Harrisburg, PA 17105-8466

PART C

I. OTHER REQUIREMENTS

- A. No storm water from pavements, area ways, roofs, foundation drains or other sources shall be directly admitted to the sanitary sewers associated with the herein approved discharge.
- B. The approval herein given is specifically made contingent upon the permittee acquiring all necessary property rights by easement or otherwise, providing for the satisfactory construction, operation, maintenance or replacement of all sewers or sewerage structures associated with the herein approved discharge in, along, or across private property, with full rights of ingress, egress and regress.
- C. Collected screenings, slurries, sludges, and other solids shall be handled and disposed of in compliance with 25 Pa. Code, Chapters 271, 273, 275, 283, and 285 (related to permits and requirements for landfilling, land application, incineration, and storage of sewage sludge), Federal Regulation 40 CFR 257, Pennsylvania Clean Streams Law, Pennsylvania Solid Waste Management Act of 1980, and the Federal Clean Water Act and its amendments. The permittee is responsible to obtain or assure that contracted agents have all necessary permits and approvals for the handling, storage, transport, and disposal of solid waste materials generated as a result of wastewater treatment.
- D. The permittee shall optimize chlorine dosages used for disinfection or other purposes to minimize the concentration of Total Residual Chlorine (TRC) in the effluent, meet applicable effluent limitations, and reduce the possibility of adversely affecting the receiving waters. Optimization efforts may include an evaluation of wastewater characteristics, mixing characteristics, and contact times, adjustments to process controls, and maintenance of the disinfection facilities. If DEP determines that effluent TRC is causing adverse water quality impacts, DEP may reopen this permit to apply new or more stringent effluent limitations and/or require implementation of control measures or operational practices to eliminate such impacts.

Where the permittee does not use chlorine for primary or backup disinfection, but proposes the use of chlorine for cleaning or other purposes, the permittee shall notify DEP prior to initiating use of chlorine and monitor TRC concentrations in the effluent on each day in which chlorine is used. The results shall be submitted as an attachment to the DMR.

- E. Notification of the designation of the responsible operator must be submitted to the permitting agency by the permittee within 60 days after the effective date of the permit and from time to time thereafter as the operator is replaced.
- F. The permittee shall develop a treatment facility operations and maintenance (O&M) plan addressing key wastewater processes. The plan shall be reviewed annually and updated when appropriate. The plan shall be submitted to DEP for review upon request. For the purpose of this paragraph, a key wastewater process includes any equipment or process that, if it fails, may cause the discharge of raw wastewater or wastewater that fails to meet NPDES permit discharge requirements, or a failure that may threaten human or environmental health. The O&M plan shall include the following, at a minimum:
 - 1. A process control strategy that includes a schedule for process control sampling, monitoring, testing, and recordkeeping.
 - 2. A plan that identifies how key wastewater processes shall be monitored and adjusted while the facility is staffed.
 - 3. A plan that identifies how key wastewater processes will be monitored while the treatment facility is not staffed.
 - 4. For treatment plants that are impacted by wet weather flows, the permittee shall develop and implement a wet weather operations strategy that minimizes or eliminates the wash out of solids from the treatment system while maximizing the flow through the treatment plant.

5. An emergency plan that identifies how the facility will be operated during times of emergency. For example, the plan shall detail how key wastewater processes will be repaired or replaced in the event of a failure while minimizing loss of life and property damage to the facility. This plan shall also include emergency contact numbers for local emergency response agencies, plant personnel, critical suppliers and vendors, and DEP contacts, at a minimum.
 6. A preventative maintenance plan that includes a schedule for preventative maintenance for all equipment within the treatment system. A spare parts inventory shall be included as part of this plan.
 7. A solids management plan that identifies how solids produced by the facility will be wasted, treated, and ultimately disposed of.
- G. The seasonal effluent limitations for fecal coliform are based on Chapter 92a (Section 92a.47(4) and (5)) of DEP's regulations and Delaware River Basin Commission's (DRBC's) Water Quality Regulations at Section 4.30.4.A. DEP's regulations govern the summer limits for fecal coliform while the winter limits are based on DRBC's regulations. The DRBC regulations state that during winter season from October through April, the instantaneous maximum concentration of fecal coliform organisms shall not be greater than 1,000 per 100 milliliters in more than 10 percent of the samples tested. For reporting purposes, a copy of the guidelines on the 10 percent rule is enclosed with the permit.

II. POTW PRETREATMENT PROGRAM IMPLEMENTATION

- A. General Requirement – The permittee shall operate and implement a POTW pretreatment program in accordance with the federal Clean Water Act, the Pennsylvania Clean Streams Law, and the federal General Pretreatment Regulations at 40 CFR Part 403. The program shall also be implemented in accordance with the permittee's approved pretreatment program and any modifications thereto submitted by the permittee and approved by the Approval Authority.
- B. Annual Report and Other Requirements – The permittee shall submit a Pretreatment Annual Report by March 31 of each year to EPA that describes the permittee's pretreatment activities for the previous calendar year. The Pretreatment Annual Report shall include a description of pretreatment activities in all municipalities from which wastewater is received at the permittee's POTW. The Pretreatment Annual Report shall include the following information, at minimum:
1. Industrial Listing – The Annual Report shall contain an updated industrial listing providing the names and addresses of all current Significant Industrial Users (SIUs) and Non-Significant Categorical Industrial Users (NSCIUs), as defined in 40 CFR 403.3, and the categorical standard, if any, applicable to each. The listing must: (1) identify any users that are subject to reduced reporting requirements under 40 CFR 403.12(e)(3); (2) identify which users are NSCIUs; (3) identify any users that have been granted a monitoring waiver in accordance with 40 CFR 403.12(e)(2) as well as the pollutants for which the waiver was granted and the date of the last POTW sampling event for each pollutant; and (4) identify any categorical industrial users that have been given mass-based limits in place of concentration-based categorical limits in accordance with 40 CFR 403.6(c)(5) or concentration-based limits in place of mass-based categorical limits in accordance with 40 CFR 403.6(c)(6).

In addition, the Annual Report shall contain a summary of any hauled-in wastes accepted at the POTW including the source of the wastes (domestic, commercial or industrial) and the receiving location for acceptance of the wastes. For each industrial source (whether or not classified as an SIU), the report shall indicate (1) the name and address of the industrial source; (2) the average daily amount of wastewater received; (3) a brief description of the type of process operations conducted at the industrial facility; (4) whether the source facility is a categorical industrial user (including NSCIU), significant industrial users, or non-significant industrial user; and (5) any controls imposed on the user.

2. Control Mechanism Issuance – The Annual Report shall contain a summary of SIU control mechanism issuance, including a list of issuance, effective, and expiration dates for each SIU control mechanism. For each general control mechanism issued, provide the names of all SIUs covered by the general control mechanism and an explanation of how the users meet the criteria of 40 CFR 403.8(f)(1)(iii)(A) for issuance of a general control mechanism.

3. Sampling and Inspection – The Annual Report shall contain a summary of the number and types of inspections and sampling events of SIUs by the permittee, including a list of all SIUs either not sampled or not inspected, and the reason that the sampling and/or inspection was not conducted. For any user subject to reduced reporting under 40 CFR 403.12(e)(3), the list shall include the date of the last POTW sampling event and the date of the last POTW inspection of the user. In addition, the report shall include a summary of the number of self-monitoring events conducted by each SIU and the number required to be conducted, including a list of all SIUs that did not submit the required number of reports and the reason why the reports were not submitted. For NSCIUs, the report shall provide the date of the compliance certification required under 40 CFR 403.12(q).
4. Industrial User Compliance and POTW Enforcement – The Annual Report shall contain a summary of the number and type of violations of pretreatment standards and requirements, including local limits, and the actions taken by the permittee to obtain compliance, including compliance schedules, penalty assessments and actions for injunctive relief. The report shall state whether each SIU was in significant noncompliance, as that term is defined in 40 CFR Section 403.8(f)(2)(viii), and include the parameter(s) in violation, the period of violation, the actions taken by the POTW in response to the violations, and the compliance status at the end of the reporting period. A copy of the publication of users meeting the significant noncompliance criteria shall be included. In addition, the report shall provide a list of users previously designated as NSCIUs that have violated (to any extent) any pretreatment standard or requirement during the year and the date and description of the violation(s).
5. Summary of POTW Operations – The Annual Report shall contain a summary of any interference, pass-through, or permit violations by the POTW and indicate the following: (1) which, if any, permit violations may be attributed to industrial users; (2) which IU(s) are responsible for such violations; and (3) the actions taken to address these events. The report shall also include all sampling and analysis of POTW treatment plant influent, effluent, and sludge conducted during the year for local limit and priority pollutants identified pursuant to Section 303(d) of the Clean Water Act, 33 U.S.C. 1313(d).
6. Pretreatment Program Changes – The Annual Report shall contain a summary of any changes made or proposed to the approved program during the period covered by the report and the date of submission to the Approval Authority.

A summary of pretreatment activities shall be incorporated into the permittee's Annual Municipal Wasteload Management Report required by 25 Pa. Code Chapter 94 and referenced in Part B I.C.4 of this permit.

- C. Routine Monitoring – The permittee shall conduct monitoring at its treatment plant that, at a minimum, includes quarterly influent, effluent, and sludge analysis for all pollutants for which local limits have been established, and an annual priority pollutant scan for influent and sludge.
- D. Notification of Pass Through or Interference – The permittee shall notify EPA and DEP, in writing, of any instance of pass through or interference, as defined at 40 CFR 403.3(p) and (k), respectively, known or suspected to be related to a discharge from an IU into the POTW. The notification shall be attached to the DMR submitted to EPA and DEP and shall describe the incident, including the date, time, length, cause (including responsible user if known), and the steps taken by the permittee and IU (if identified) to address the incident. A copy of the notification shall also be sent to the EPA at the address provided below.
- E. Headworks Analysis – The permittee shall submit to EPA a reevaluation of its local limits based on a headworks analysis of its treatment plant within one (1) year of permit issuance, and provide a revised submission within three (3) months of receipt of comments from EPA unless a longer period of time is granted in writing by EPA. In order to ensure that the permittee's discharge complies with water quality standards, the reevaluation of local limits shall consider, at a minimum, all water quality standards under 25 Pa. Code Chapter 93 applicable to the pollutants included in the reevaluation, unless the POTW is subject to an effluent limitation for the pollutant in Part A of this permit. The list of pollutants to be evaluated, as well as a sampling plan for collection of necessary data, shall be submitted to EPA within three (3) months of permit issuance. Unless otherwise approved in writing, the list of pollutants shall include arsenic, cadmium, chromium, copper, cyanide, lead, mercury, molybdenum, nickel, selenium,

silver, zinc, BOD₅, TSS, ammonia, any pollutants for which a local limit currently exists, any pollutant limited in this permit, as well as any other pollutants that have been identified in the POTW in significant quantities through monitoring or the receipt of indirect discharges and hauled-in wastes. For example, facilities receiving residual waste from oil and gas operations should include pollutants such as Total Dissolved Solids (TDS), specific ions such as chlorides and sulfates, specific radionuclides, metals such as barium and strontium, and other pollutants that could reasonably be expected to be present. Within four (4) months of acceptance of the headworks analysis by the Approval Authority, the permittee shall adopt the revised local limits and, if necessary to ensure that the limits are enforceable throughout the service area, notify all contributing municipalities of the need to adopt the revised local limits.

- F. Changes to Pretreatment Program – EPA and DEP may require the permittee to submit for approval changes to its pretreatment program if any one or more of the following conditions is present:
1. The program is not implemented in accordance with 40 CFR Part 403;
 2. Problems such as interference, pass through or sludge contamination develop or continue;
 3. The POTW proposes to introduce new pollutants or an increased loading of approved pollutants as described in Part A III.C.2 of this permit;
 4. Federal, State, or local requirements change;
 5. Changes are needed to assure protection of waters of the Commonwealth.

Program modification is necessary whenever there is a significant change in the operation of the pretreatment program that differs from the information contained in the permittee's submission, as approved under 40 CFR 403.11.

- G. Procedure for Pretreatment Program Changes – Upon submittal by the permittee, and written notice of approval by the Approval Authority to the permittee of any changes to the permittee's approved pretreatment program, such changes are effective and binding upon the permittee unless the permittee objects within 30 days of receipt of the written notice of approval. Any objection must be submitted in writing to EPA and DEP.
- H. Correspondence – The Approval Authority shall be EPA at the following address:

Pretreatment Coordinator (3WP41)
 U.S. Environmental Protection Agency
 1650 Arch Street
 Philadelphia, PA 19103-2029

III. WHOLE EFFLUENT TOXICITY (WET)

A. General Requirements

1. The permittee shall conduct chronic WET tests as specified in this section. The permittee shall collect discharge samples and perform WET tests to generate chronic survival and reproduction data for the cladoceran, *Ceriodaphnia dubia* and chronic survival and growth data for the fathead minnow, *Pimephales promelas*.
2. Samples shall be collected at Outfall 002 in accordance with paragraph E.
3. The permittee shall perform testing using the following dilution series: 100%, 60%, 30%, 2%, and 1% effluent, with a control, where 2% is the facility-specific Target In-Stream Waste Concentration (TIWC).
4. The determination of whether a test endpoint passes or fails shall be made using DEP's WET Analysis Spreadsheet (available at www.depweb.state.pa.us/wett) by comparing replicate data for the control with replicate data for the TIWC dilution or any dilution greater than the TIWC.

5. The permittee shall submit only valid WET test results to DEP.

B. Test Frequency and Reporting

1. WET testing shall be conducted annually, at a minimum, during the period January 1 – December 31. Annual WET tests must be completed at least 6 months apart, and shall start in the year the permit becomes effective if the permit effective date is prior to October 1.
2. A complete WET test report shall be submitted to the DEP regional office that issued the permit within 30 days of test completion. A complete WET test report submission shall include the information contained in paragraph H, below. The permittee shall continue annual WET monitoring, at a minimum, during the permit renewal review period and during any period of administrative extension of this permit.
3. If a test failure is determined for any endpoint during annual monitoring, the permittee shall initiate a re-test for the species with the failure within 30 days of test completion. All endpoints for the species shall be evaluated in the re-test. The results of the re-test shall be submitted to the DEP regional office that issued the permit.
4. If a passing result is determined for all endpoints in a re-test, the permittee may resume annual monitoring.
5. If there is a failure for one or more endpoints in a re-test, the permittee shall initiate or continue quarterly WET testing for both species until there are four consecutive passing results for all endpoints. The results of all tests shall be submitted to the DEP regional office that issued the permit. In addition, the permittee shall initiate a Phase I Toxicity Reduction Evaluation (TRE) as specified in paragraph C, below.
6. The permittee shall attach the WET Analysis Spreadsheet for the latest four consecutive WET tests to the NPDES permit renewal application that is submitted to DEP at least 180 days prior to the permit expiration date.

C. Phase I Toxicity Reduction Evaluation (TRE)

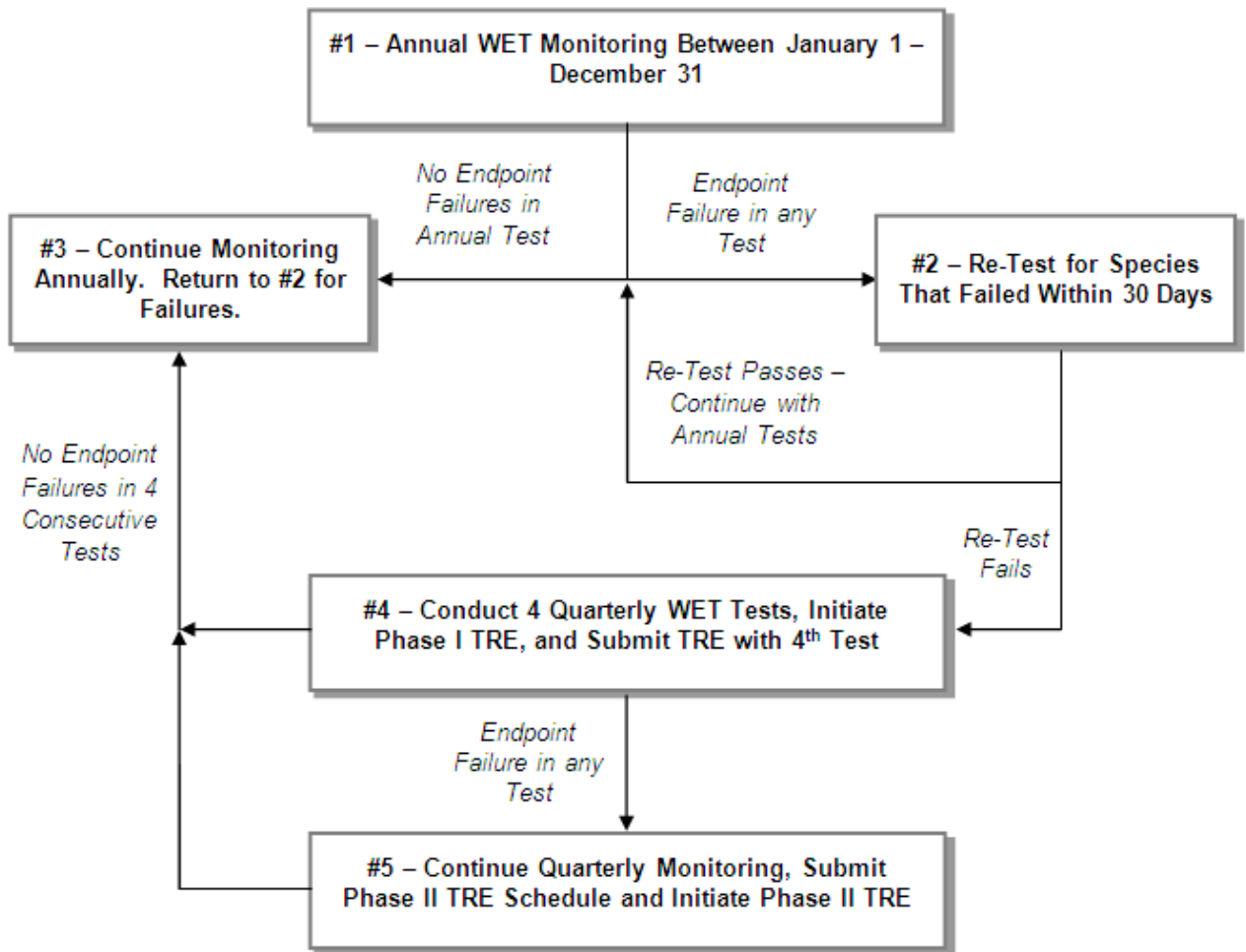
1. The Phase I TRE trigger is one WET endpoint failure followed by a re-test that confirms the failure for the same species. When the TRE process is triggered, quarterly WET testing shall be initiated for both species until there are four consecutive passing results for all endpoints. The Phase I TRE may include a Toxicity Identification Evaluation (TIE) if the permittee cannot immediately identify the possible causes of the effluent toxicity and the possible sources of the causative agents.
2. The permittee shall, within one year following the Phase I TRE trigger, submit a Phase I TRE report to the DEP regional office that issued the permit. The Phase I TRE shall be conducted in accordance with EPA's guidance, "Toxicity Reduction Evaluation for Municipal Wastewater Treatment Plants" (EPA/833B-99/002), "Generalized Methodology for Conducting Industrial Toxicity Reduction Evaluations" (EPA/600/2-88/070), and other relevant EPA guidance, as applicable. If a TIE is conducted as part of the Phase I TRE, it shall conform to EPA's guidance, "Methods for Aquatic Toxicity Identification Evaluations Phase I" (EPA/600/6-91/003), "Phase II" (EPA/600/R-92/080), "Phase III" (EPA/600/R-92/081) and other relevant EPA guidance. The Phase I TRE report shall be submitted with the fourth quarterly WET test report that is completed following the Phase I TRE trigger. The TRE shall include all activities undertaken to identify the cause(s) and source(s) of toxicity and any control efforts.
3. If all four quarterly WET tests produce passing results for all endpoints during the Phase I TRE process, performance of a Phase II TRE is not required, and annual WET testing in accordance with paragraph B.1 may resume.

4. If the four WET tests produce at least one failing result during the Phase I TRE process, the permittee shall continue quarterly WETT monitoring for both species and initiate a Phase II TRE in accordance with paragraph D. In this case, the Phase I TRE must include a schedule for completion of the Phase II TRE. The schedule must include interim milestones and a final completion date not to exceed two years from the initiation of the Phase II TRE. The permittee shall implement the Phase II TRE in accordance with the schedule unless DEP issues written approval to modify the schedule or cease performance of the Phase II TRE.
5. Re-tests during the TRE process are required for invalid tests but are optional and at the discretion of the permittee for valid tests. The results of all re-tests must be submitted to the DEP regional office that issued the permit along with the required elements in paragraph H.

D. Phase II Toxicity Reduction Evaluation (TRE)

1. The Phase II TRE trigger is one WET endpoint failure during performance of the Phase I TRE. A Phase II TRE, if required, shall conform to EPA's guidance, "Toxicity Reduction Evaluation for Municipal Wastewater Treatment Plants" (EPA/833B-99/002), "Generalized Methodology for Conducting Industrial Toxicity Reduction Evaluations" (EPA/600/2-88/070), and other relevant EPA guidance, as applicable. A Phase II TRE evaluates the possible control options to reduce or eliminate the effluent toxicity and the implementation of controls.
2. Once initiated, the Phase II TRE must continue until the source(s) of toxicity are controlled as evidenced by four consecutive WET test passing results for all endpoints, and a final TRE report must be submitted on or before the date specified in the schedule, unless otherwise approved by DEP in writing.
3. If four consecutive quarterly WET tests produce passing results for all endpoints during the Phase II TRE process, annual WET testing in accordance with paragraph B.1 may be initiated or resume.

An overview of the process described in paragraphs B, C and D is presented below:



E. Sample Collection

For each acute testing event, a 24-hour flow-proportioned composite sample shall be collected. For each chronic testing event, three 24-hour flow-proportioned, composite samples shall be collected over a seven day exposure period. The samples must be collected at a frequency of not greater than every two hours and must be flow-proportioned. The samples must be collected at the permit compliance sampling location. Samples must be analyzed within 36 hours from the end of the compositing period and must be placed on ice and held at $\leq 6^{\circ}\text{C}$. Refer to the sample handling and preservation regulations set forth in 40 CFR 136, 25 Pa. Code Chapter 252, The NELAC Institute (TNI) Standard, and the appropriate EPA methods.

F. Test Conditions and Methods

Laboratories must be accredited by the DEP Laboratory Accreditation Program in order to perform and report WET tests for NPDES permit compliance. Laboratories must be either State or NELAP accredited.

1. Acute tests shall be completed in accordance with EPA’s “Methods for Measuring the Acute Toxicity of Effluents and Receiving Waters to Freshwater and Marine Organisms” (EPA-821-R-02-012, latest edition). Forty eight (48) hour static non-renewal tests shall be used.
2. Chronic tests shall be completed in accordance with EPA’s “Short-term Methods for Estimating the Chronic Toxicity of Effluents and Receiving Waters to Freshwater Organisms” (EPA-821-R-02-013, latest edition). Seven (7) day tests shall be used with renewal every 24 hours.

3. The quality assurance and control (QA/QC) requirements and test acceptability standards specified in EPA's test methods and the requirements set forth in 25 Pa Code Chapter 252 or the TNI Standard must be followed.
4. If the permittee or its accredited laboratory determines that QA/QC requirements and/or test acceptability standards have not been met, a re-test shall be initiated within 30 days. Original test data must be maintained by the laboratory and be submitted to DEP upon request. The justification for a re-test must be clearly documented and kept on file with the sample results.

G. Chemical Analyses

Chemical analyses must follow the requirements of the EPA methods and applicable State and/or Federal regulations.

1. Chemical analysis on effluent samples shall include pH, Conductivity, Total Alkalinity, Total Hardness, Total Residual Chlorine, Total Ammonia (Unionized Ammonia), Dissolved Oxygen and temperature. Chemical analyses as described in the EPA Methods (above) shall be performed for each sampling event, including each new batch of dilution water and each testing event.
2. In addition to the chemical analyses required above, those parameters listed in Part A of the NPDES permit for the outfall(s) tested shall be analyzed concurrently with the WET test by using the method(s) specified in the permit.

H. WET Report Elements

WET test reports that are submitted to DEP must include the requirements identified in 25 Pa. Code § 252.401(j)(1) – (15) or in the TNI Standard, or equivalent, as well as the following information:

1. A general test description, including the origin and age of test organisms, dates and results of reference toxicant tests, light and temperature regimes, and other documentation that QA and test acceptability criteria as specified in EPA's methods and DEP's QA Summaries have been met.
2. A description of sample collection procedures and sampling location.
3. Name(s) of individual(s) collecting and transporting samples, including sample renewals, and the date(s) and time(s) of sample collection.
4. All chemical and physical data including laboratory quantitation limits and observations made on the species. The hardness shall be reported for each test condition.
5. Copies of raw data sheets and/or bench sheets with data entries and signatures.
6. When effluents are dechlorinated, dechlorination procedures must be described and if applicable a thiosulfate control used in addition to the normal dilution water control. If the thiosulfate control results are significantly different from the normal control, as determined using DEP's WET Analysis Spreadsheet, the thiosulfate control shall be used in the spreadsheet for comparison with the TIWC condition. The WET report must specify which control was used to determine whether the test result is pass or fail.
7. A description of all observations or test conditions that may have affected the test outcome.
8. Control charts for the species tested regarding age, temperature test range, mortality data and all reference toxicant tests.
9. A completed WET test summary report (3800-FM-BPNPSM0485).
10. A DEP WET Analysis Spreadsheet printout that provides control and TIWC replicate data and displays the outcome of the test (pass or fail) for each endpoint tested.

WETT reports shall be submitted to the DEP regional office that issued the permit and, for discharges to the Delaware River basin, the Delaware River Basin Commission (DRBC).

IV. REQUIREMENTS APPLICABLE TO STORMWATER OUTFALLS

- D. The permittee is authorized to discharge non-polluting stormwater from its site, alone or in combination with other wastewaters, through the following outfalls: 003

Monitoring requirements and effluent limitations for these outfalls are specified in Part A of this permit, if applicable.

- E. Preparedness, Prevention and Contingency (PPC) Plan

The permittee must develop and implement a PPC Plan in accordance with 25 Pa. Code § 91.34 following the guidance contained in DEP's "Guidelines for the Development and Implementation of Environmental Emergency Response Plans" (DEP ID 400-2200-001), its NPDES-specific addendum and the minimum requirements below. For existing facilities, the PPC Plan must be developed prior to permit issuance. For new facilities, the PPC Plan must be submitted to DEP no later than prior to startup of facility operation.

1. The PPC Plan must identify all potential sources of pollutants that may reasonably be expected to affect the quality of stormwater discharges from the facility.
2. The PPC Plan must describe preventative measures and best management practices (BMPs) that will be implemented to reduce or eliminate pollutants from coming into contact with stormwater resulting from routine site activities and spills.
3. The PPC Plan must address actions that will be taken in response to on-site spills or other pollution incidents.
4. The PPC Plan must identify areas which, due to topography or other factors, have a high potential for soil erosion, and identify measures to limit erosion. Where necessary, erosion and sediment control measures must be developed and implemented in accordance with 25 Pa. Code Chapter 102 and DEP's "Erosion and Sediment Pollution Control Manual" (DEP ID 363-2134-008).
5. The PPC Plan must address security measures to prevent accidental or intentional entry which could result in an unintentional discharge of pollutants.
6. The PPC Plan must include a plan for training employees and contractors on pollution prevention, BMPs, and emergency response measures.
7. If the facility is subject to SARA Title III, Section 313, the PPC Plan must identify releases of "Water Priority Chemicals" within the previous three years. Water Priority Chemicals are those identified in EPA's "Guidance for the Determination of Appropriate Methods for the Detection of Section 313 Water Priority Chemicals" (EPA 833-B-94-001, April 1994). The Plan must include an evaluation of all activities that may result in the stormwater discharge of Water Priority Chemicals.

Spill Prevention Control and Countermeasure (SPCC) plans may be used to meet the requirements of this section if the minimum requirements are addressed.

The PPC Plan shall be evaluated and if necessary updated on an annual basis, at a minimum, and when one or more of the following occur:

- Applicable DEP or federal regulations are revised, or this permit is revised;
- The Plan fails in an emergency;
- There is a change in design, industrial process, operation, maintenance, or other circumstances, in a

manner that materially increases the potential for fires, explosions or releases of toxic or hazardous constituents; or which changes the response necessary in an emergency;

- The list of emergency coordinators or equipment changes; or
- When notified in writing by DEP.

All updates must be kept on-site and be made available to DEP upon request.

C. Minimum Required BMPs

In addition to BMPs identified in the PPC Plan, the permittee shall implement the following minimum BMPs relating to stormwater pollution prevention:

1. If applicable, post-construction stormwater BMPs that are required under 25 Pa. Code Chapter 102 must be maintained.
2. For industrial facilities, the BMPs in the applicable Appendix to the NPDES PAG-03 General Permit for Discharges of Stormwater Associated with Industrial Activities that is currently in effect.
3. For POTWs, all of the following:
 - a. Manage sludge in accordance with all applicable permit requirements.
 - b. Store chemicals in secure and covered areas on impervious surfaces away from storm drains.
 - c. For new facilities and upgrades, design wastewater treatment facilities to avoid, to the maximum extent practicable, stormwater commingling with sanitary wastewater, sewage sludge, and biosolids.
 - d. Efficiently use herbicides for weed control. Where practicable, use the least toxic herbicide that will achieve pest management objectives. Do not apply during windy conditions.
 - e. Do not wash parts or equipment over impervious surfaces that wash into storm drains.
 - f. Implement infiltration techniques, including infiltration basins, trenches, dry wells, porous pavement, etc., wherever practicable.

D. Annual Inspection and Compliance Evaluation

On an annual basis, the permittee shall conduct an annual inspection of each outfall identified in paragraph A and record the results on the "Annual Inspection Form for NPDES Permits for Discharges of Stormwater Associated with Industrial Activities" (3800-PM-WSFR0083v). The form shall be retained on-site and be made available to DEP upon request.

Areas contributing to a stormwater discharge associated with industrial activity shall be visually inspected for evidence of, or the potential for, pollutants entering the drainage system. BMPs in the PPC Plan and required by this permit shall be evaluated to determine whether they are adequate and properly implemented in accordance with the terms of this permit or whether additional control measures are needed.

E. Stormwater Sampling Requirements

If stormwater sampling is required in Part A of this permit, the following requirements apply:

1. The permittee shall record stormwater sampling event information on the "Additional Information for the Reporting of Stormwater Discharge Monitoring" form (3800-PM-WSFR0083t) and submit the form as an attachment to the DMR.
2. All samples shall be collected from the discharge resulting from a storm event that is greater than 0.1 inches in magnitude and that occurs at least 72 hours from the previously measurable (greater than 0.1 inch rainfall) storm event. The 72-hour storm interval is waived when the preceding storm did not yield a measurable discharge, or if the permittee is able to document that a less than 72-hour interval is representative for local storm events during the sample period.
3. Grab samples shall be taken during the first 30 minutes of the discharge. If the collection of a grab sample during the first 30 minutes is not possible, a grab sample can be taken during the first hour of the discharge, in which case the discharger shall provide an explanation of why a grab sample during the first 30 minutes was not possible.

V. PCB MONITORING

- A. On April 7, 2007, the U.S. Environmental Protection Agency (EPA), Region III, established a Total Maximum Daily Load (TMDL) for Polychlorinated Biphenyl (PCB) for the Schuylkill River, which was listed on Pennsylvania's 1996 303(d) list of impaired streams as impaired due to the presence of elevated PCB concentrations found in fish tissue. PCBs are a group of synthetic chemicals that consist of 209 individual compounds (known as congeners). The Schuylkill River's PCB TMDL was established using a water quality criterion of 0.044 ng/L for PCBs.
- B. Implementation of the TMDL requires that permitted facilities that discharge directly to the Schuylkill River conduct monitoring for PCBs using analytical Method 1668A. The results of PCB monitoring will be evaluated to determine a need to develop and implement a PCB Waste Minimization and Reduction Program, also known as Pollution Minimization Plan (PMP). For information on how to develop a PMP visit Delaware River Basin Commission's website at http://www.state.nj.us/drbc/PMP_info.htm.
- C. Implementation of the TMDL will be completed in two phases. Phase I implementation of the TMDL requires that this facility collect and analyze two samples for PCBs utilizing Method 1668A during the first 12 months of this permit. Phase II implementation of the TMDL will involve the development and implementation of a PMP based on the PCB monitoring results. This facility is required to collect and analyze two samples for PCBs utilizing Method 1668A within 12 months from the issuance of this permit. One sample shall be collected during a wet weather flow period; the second sample shall be collected during a dry flow period. The samples shall be collected from Outfall . Sample collection techniques, identification analytical approaches and reporting requirements can be found at http://www.state.nj.us/drbc/PCB_info.htm.
- D. Within 15 months from the issuance of this permit, the facility shall submit the results of the PCB monitoring to DEP at the address listed below. Upon review of the data collected in Phase I, individual facilities will be directed by the DEP to commence Phase II involving development and implementation of a PMP.

PA Department of Environmental Protection
Southeast Regional Office
Clean Water Program
2 East Main Street
Norristown, PA 19401