

Figure 1. Total mercury deposition simulation for the United States and southern Canada using the Regional Lagrangian Model of Air Pollution (EUEC, 2005).

Fish Consumption Advisories for Mercury

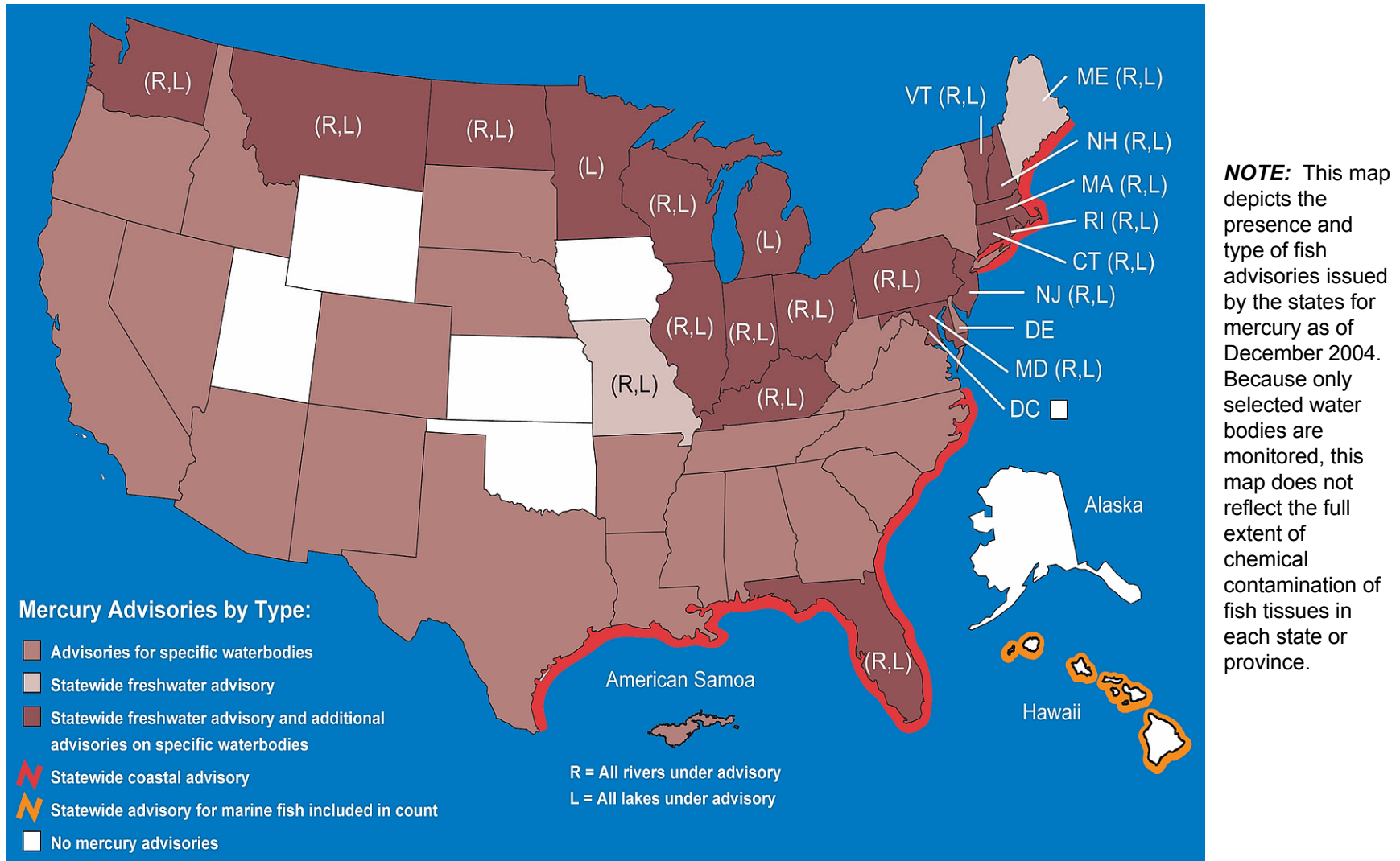


Figure 2. Fish consumption advisories due to mercury levels in surface waters of the United States as of December 2004 (U.S. EPA, 2004)

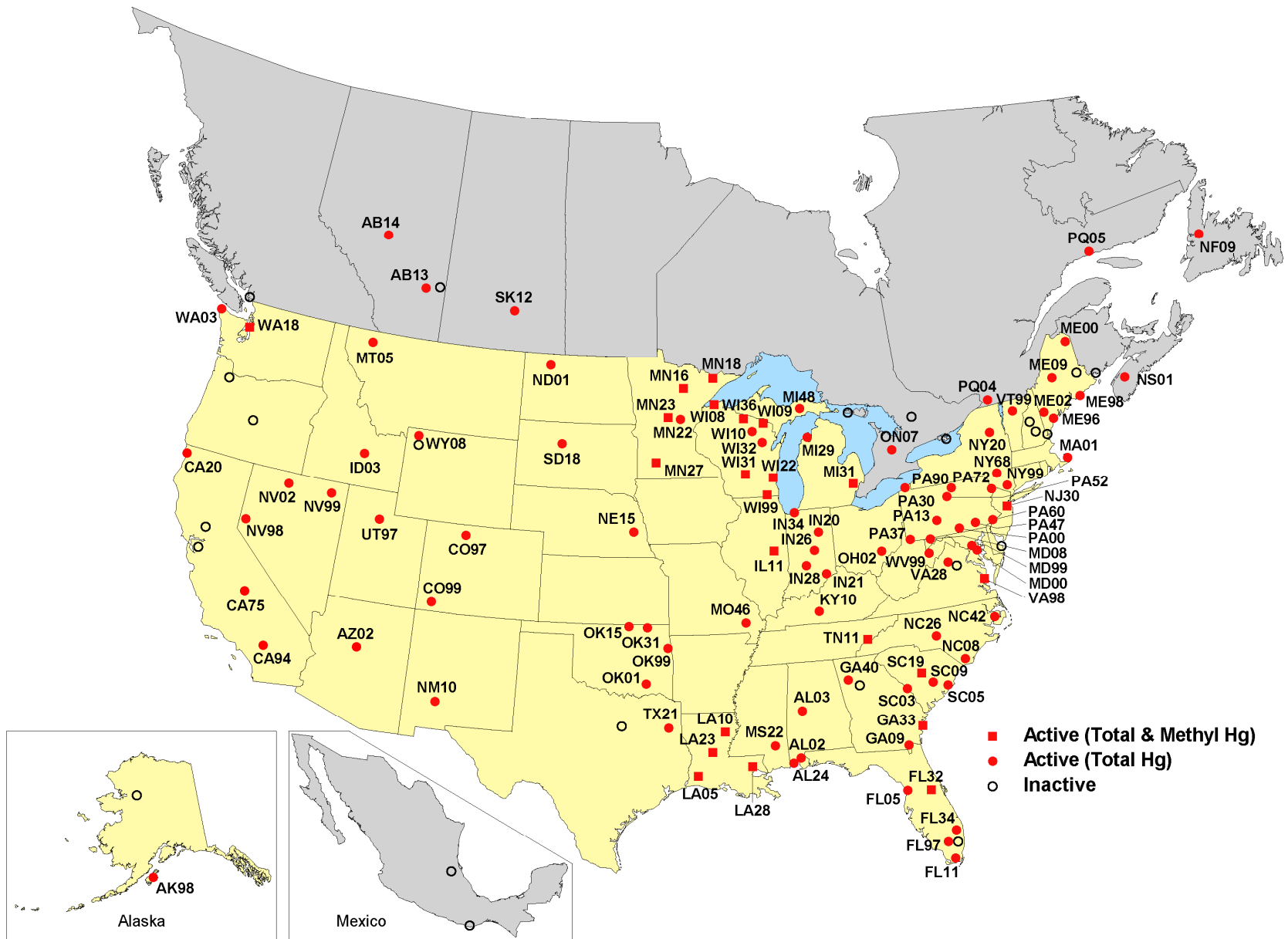


Figure 3. Location of active and inactive National Atmospheric Deposition Program/Mercury Deposition Network (NADP/MDN) sites in the United States and southern Canada as of November 2007.

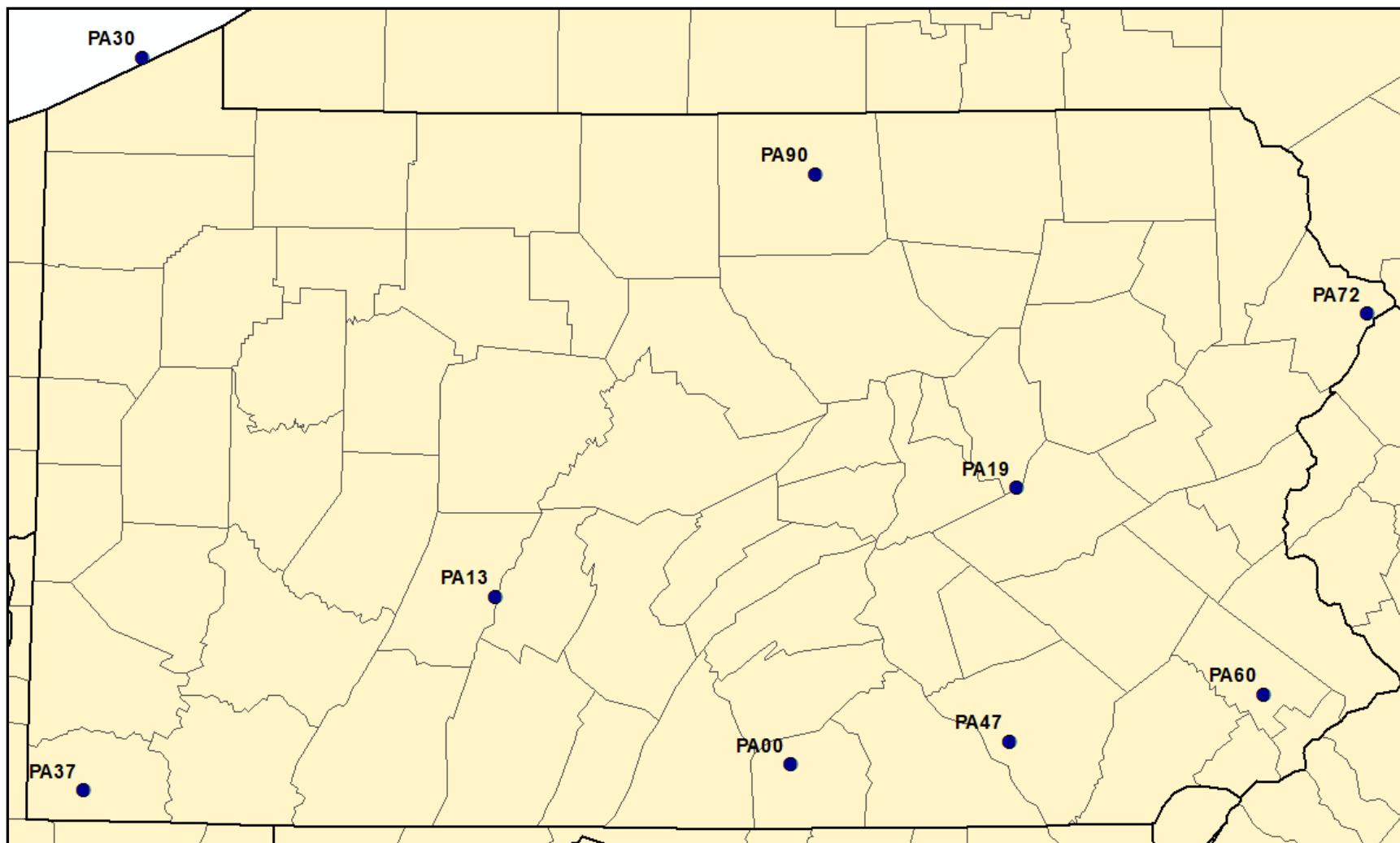
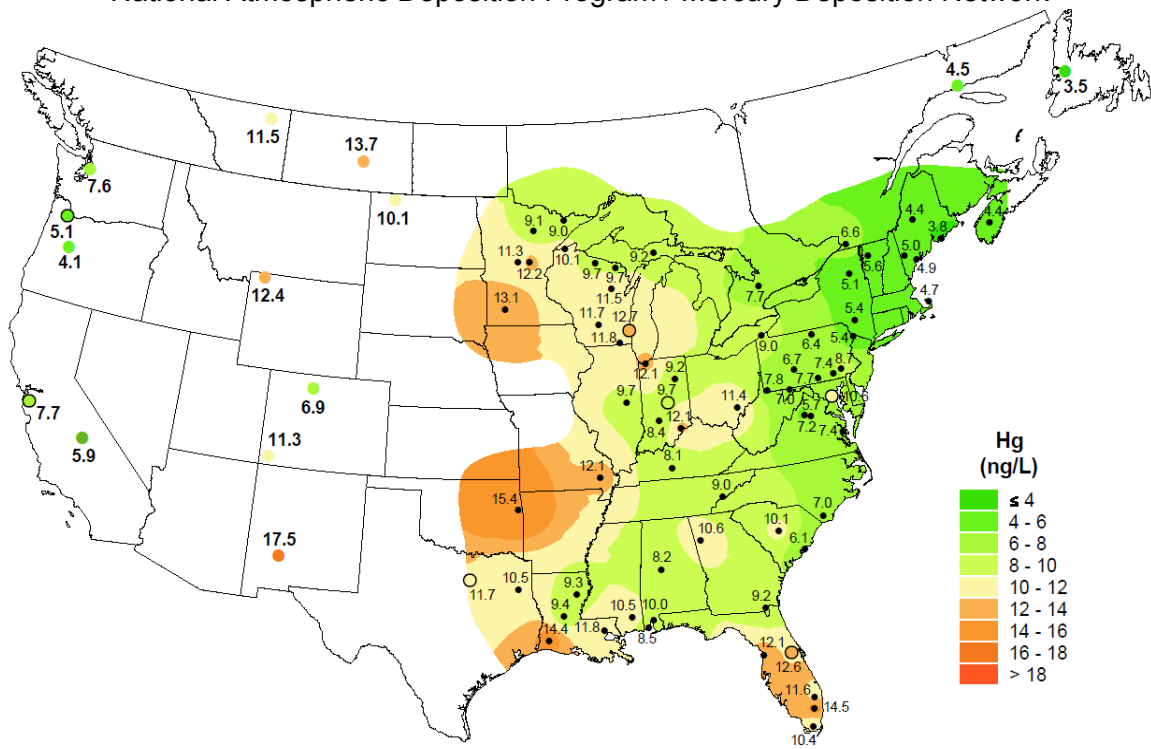


Figure 4. Location of active National Atmospheric Deposition Program/Mercury Deposition Network (NADP/MDN) sites in Pennsylvania in 2005 and 2006.

Annual Total Mercury Concentration: 2005
 National Atmospheric Deposition Program / Mercury Deposition Network



Annual Total Mercury Deposition: 2005
 National Atmospheric Deposition Program / Mercury Deposition Network

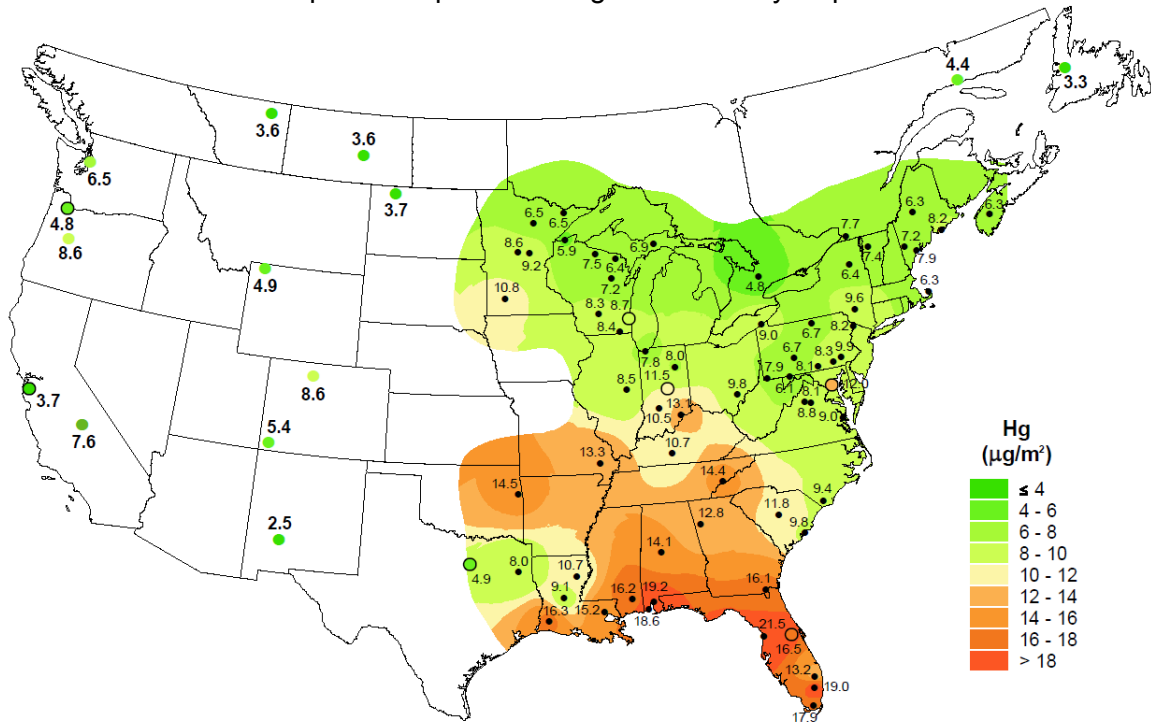
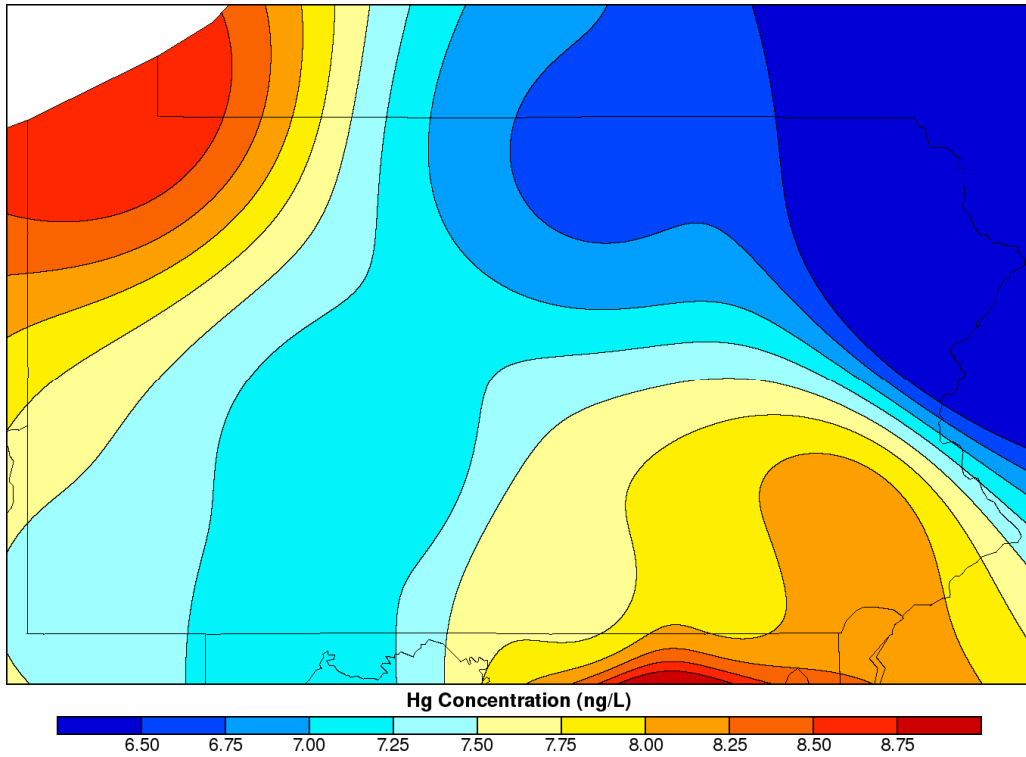


Figure 5. Volume-weighted mean annual total mercury concentrations (ng/L) and estimated wet depositions ($\mu\text{g}/\text{m}^2$) at all Mercury Deposition Network sites in the United States and southern Canada that met NADP/MDN's 75% data completeness criteria in 2005.

Annual Volume-Weighted Mean Mercury Concentration: 2005



Annual Mercury Wet Deposition: 2005

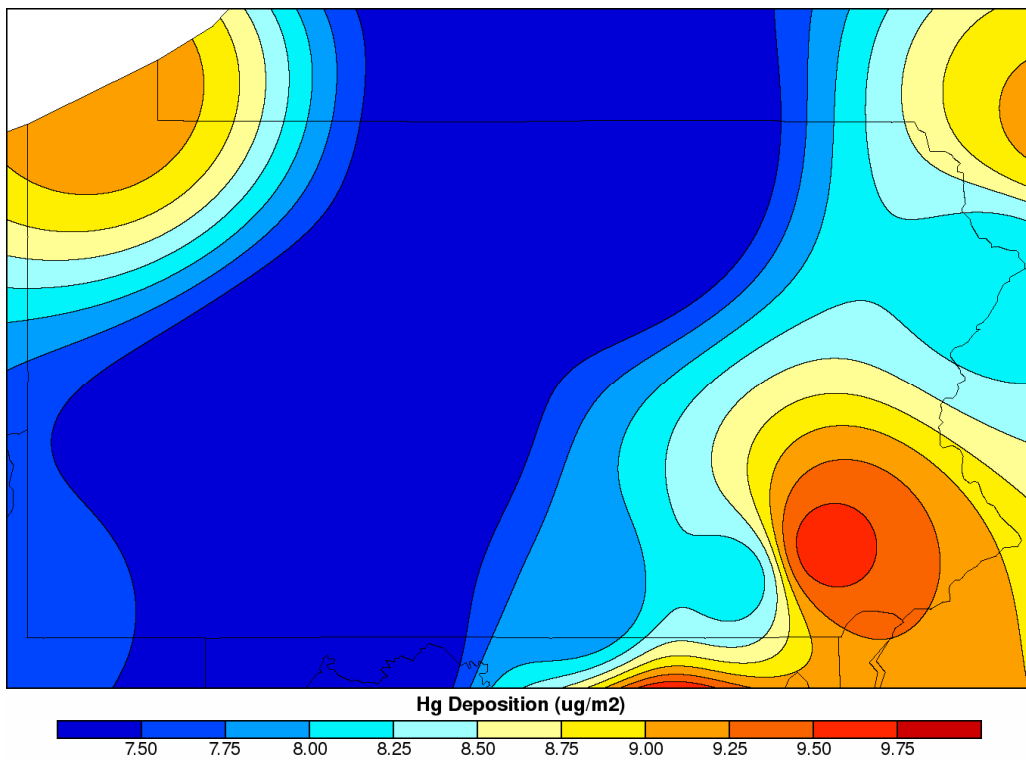
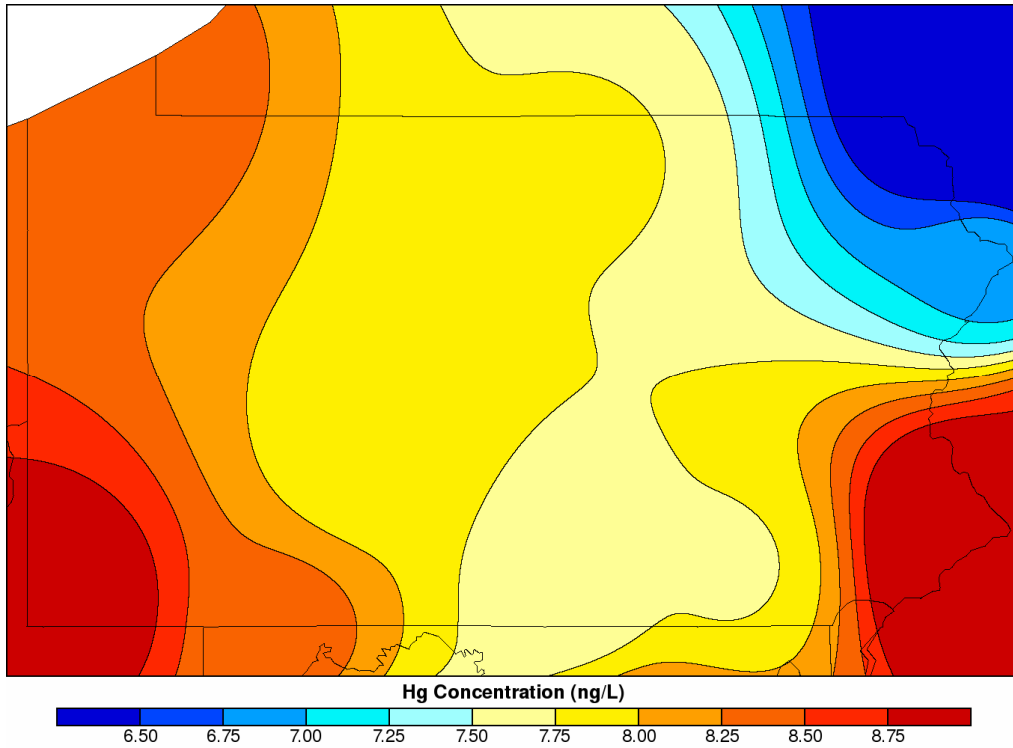


Figure 6. Spatial interpolation of 2005 volume-weighted mean annual total mercury concentrations (ng/L) and estimated wet depositions ($\mu\text{g}/\text{m}^2$) based on data from Mercury Deposition Network sites in Pennsylvania and peripheral states.

Annual Volume-Weighted Mean Mercury Concentration: 2006



Annual Mercury Wet Deposition: 2006

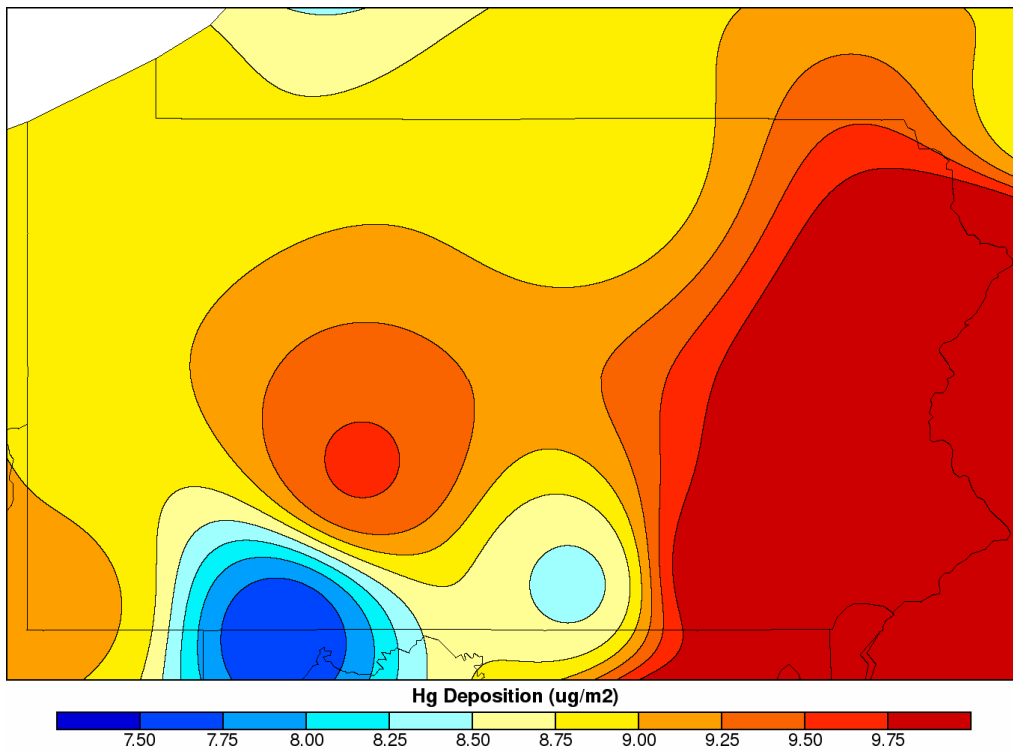
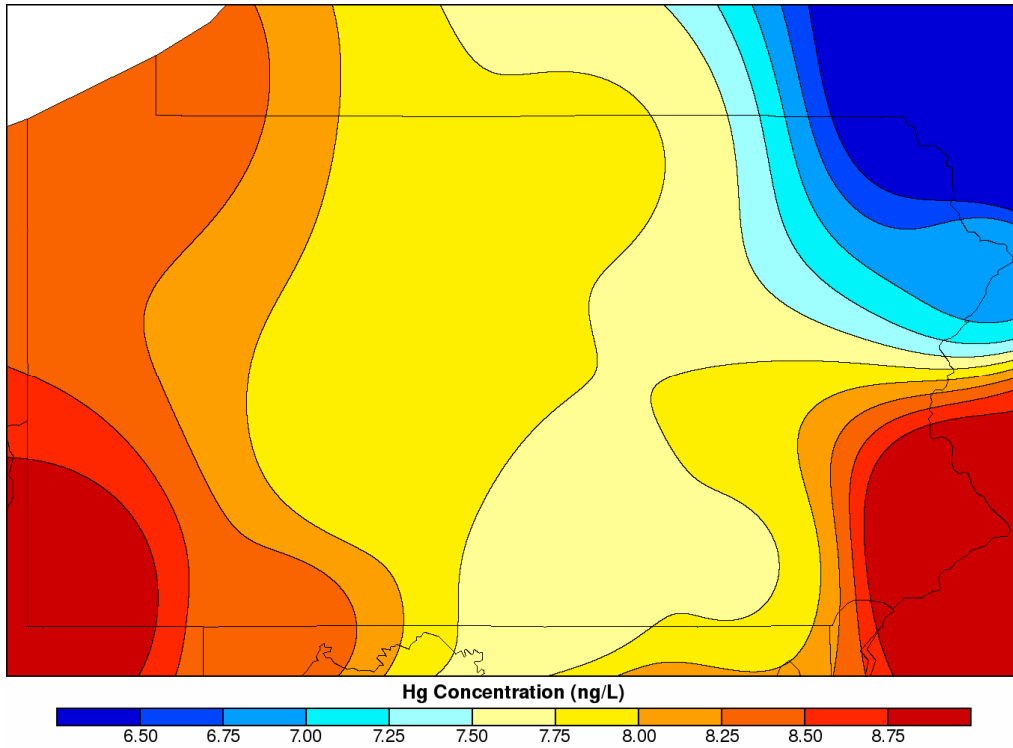


Figure 7. Volume-weighted mean annual total mercury concentrations (ng/L) and estimated wet depositions ($\mu\text{g}/\text{m}^2$) at all Mercury Deposition Network sites in the United States and southern Canada that met NADP/MDN's 75% data completeness criteria in 2006.

Annual Volume-Weighted Mean Mercury Concentration: 2006



Annual Mercury Wet Deposition: 2006

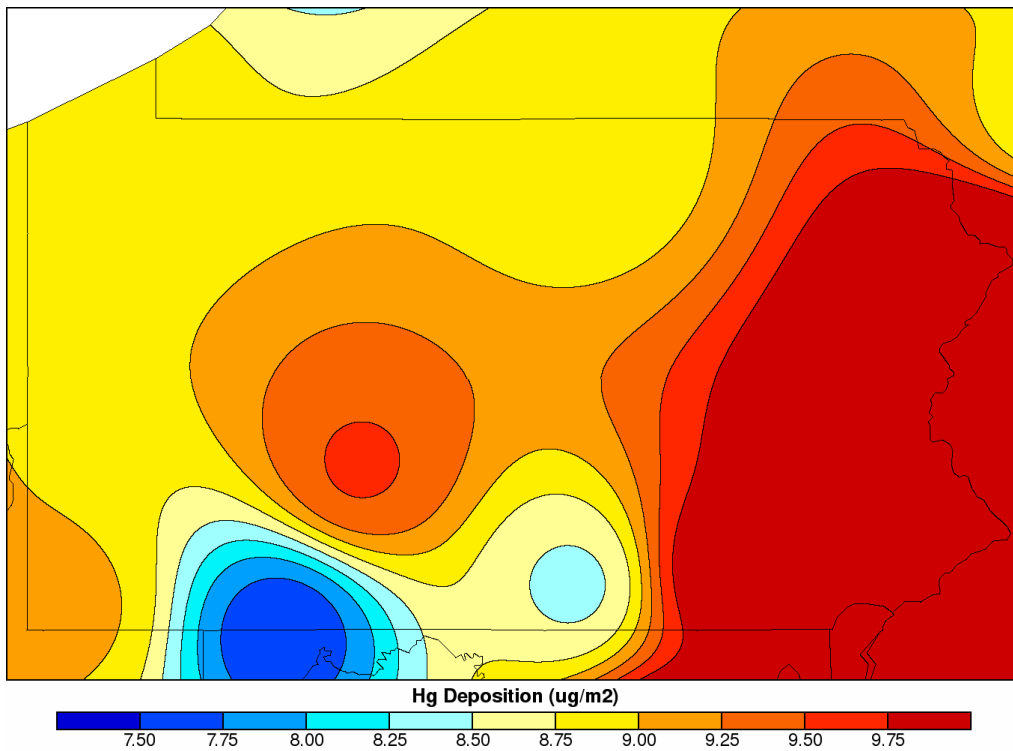


Figure 8. Spatial interpolation of 2006 volume-weighted mean annual total mercury concentrations (ng/L) and estimated wet depositions ($\mu\text{g}/\text{m}^2$) based on data from Mercury Deposition Network sites in Pennsylvania and peripheral states.

Quarterly Volume-Weighted Mean Mercury Concentration: 2005

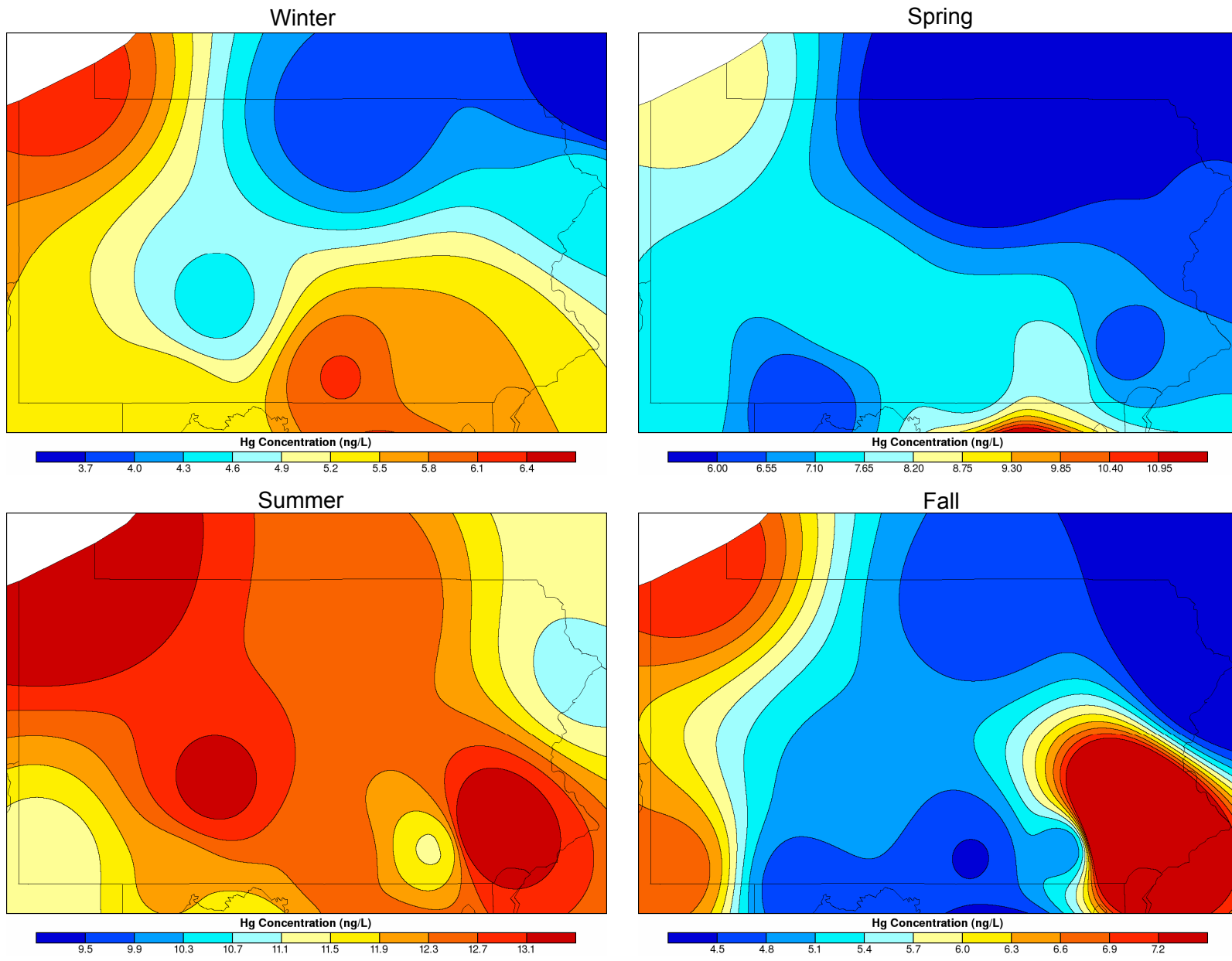


Figure 9. Seasonal variations in volume-weighted mean total mercury concentrations (ng/L) across Pennsylvania in 2005.

Quarterly Volume-Weighted Mean Mercury Concentration: 2006

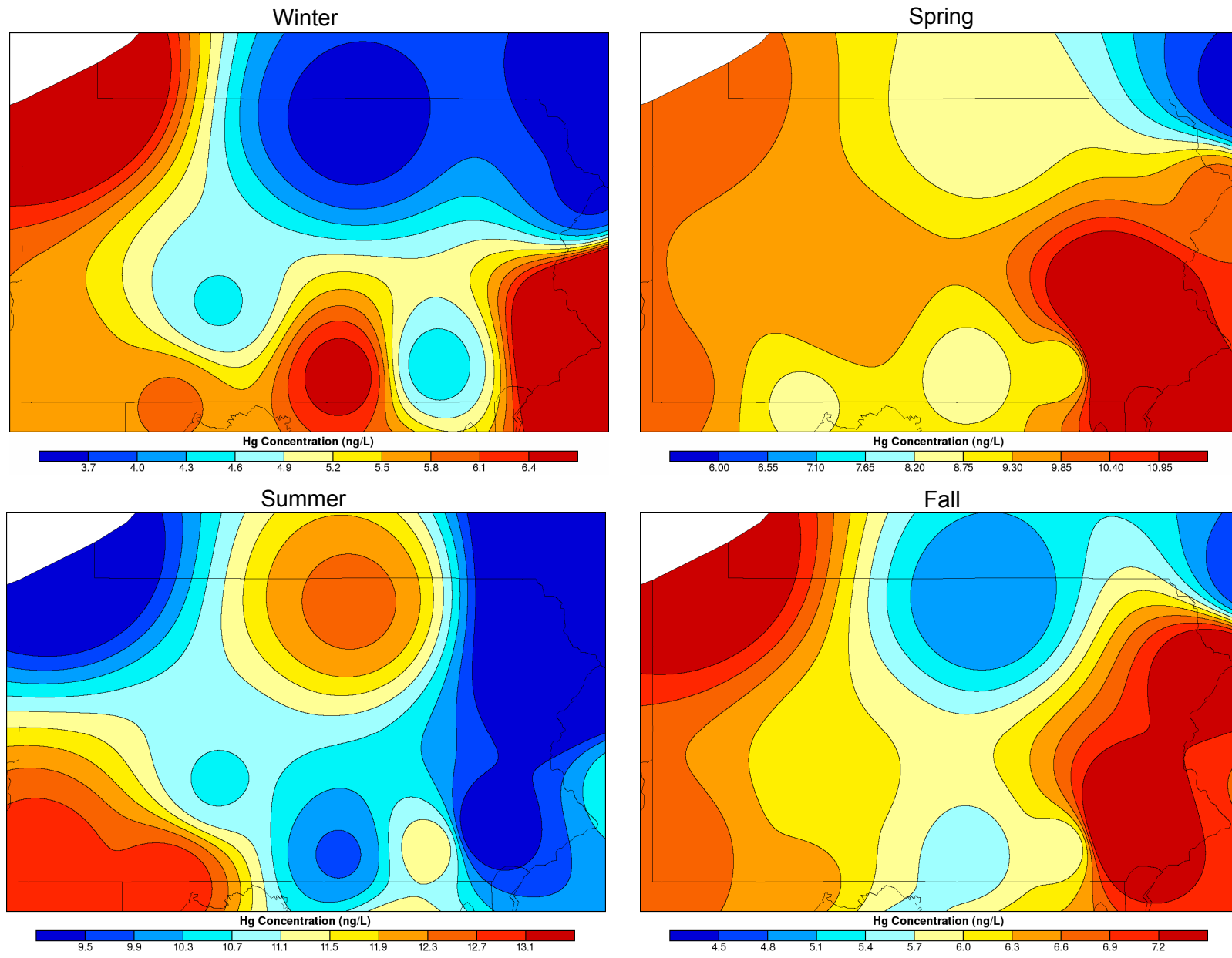


Figure 10. Seasonal variations in volume-weighted mean total mercury concentrations (ng/L) across Pennsylvania in 2006.

Quarterly Mercury Wet Deposition: 2005

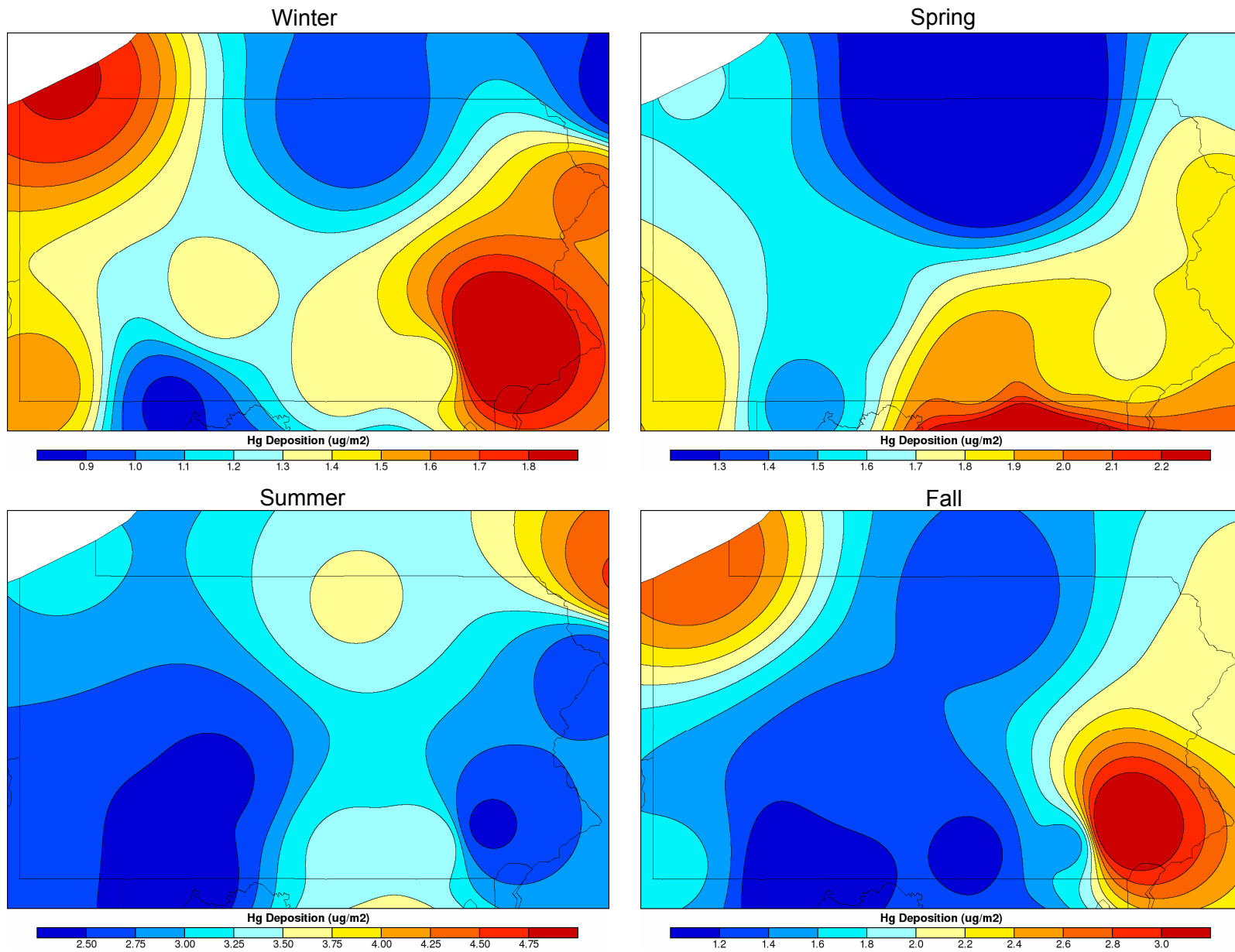


Figure 11. Seasonal variations in total mercury wet depositions ($\mu\text{g}/\text{m}^2$) across Pennsylvania in 2005.

Quarterly Mercury Wet Deposition: 2006

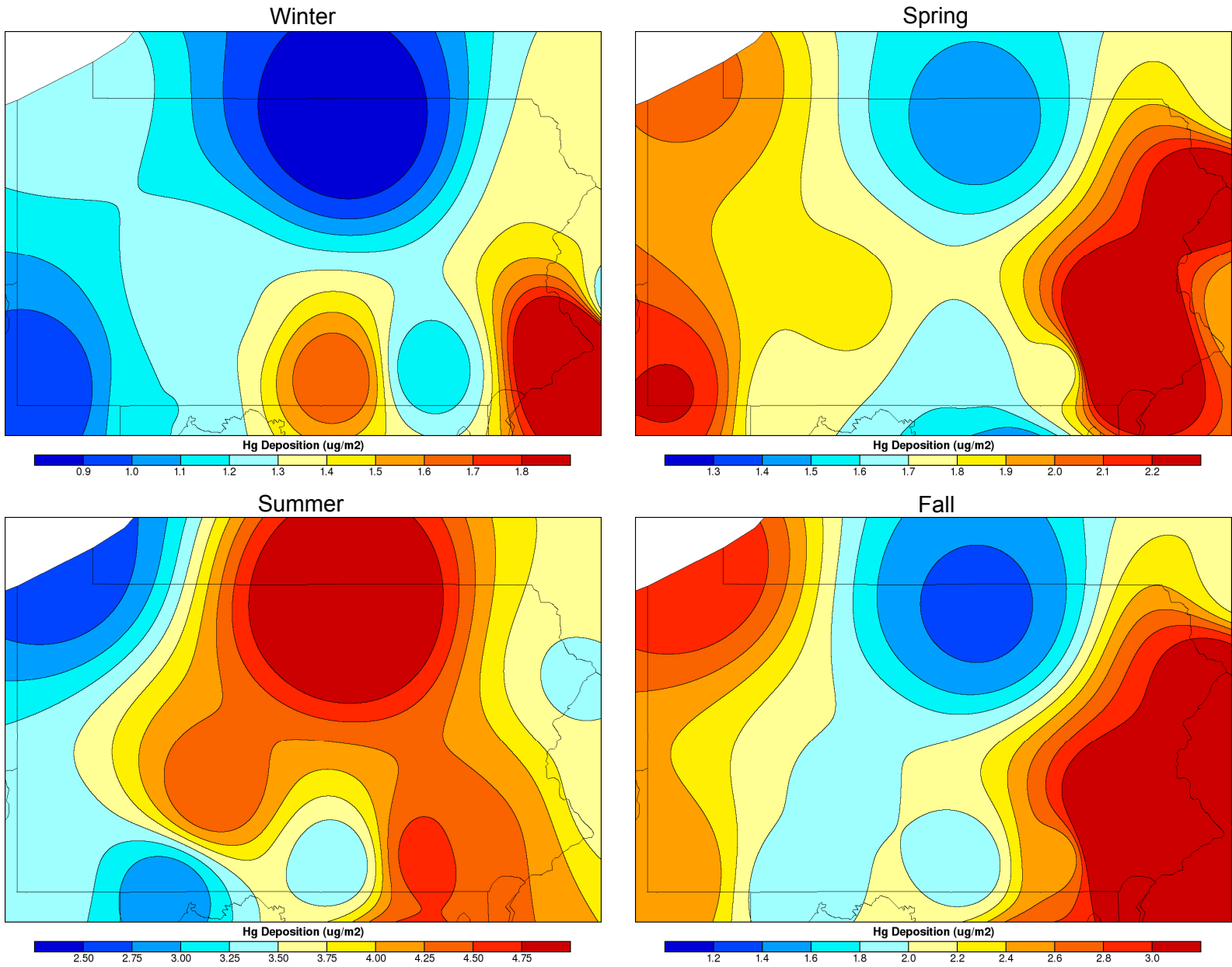


Figure 12. Seasonal variations in total mercury wet depositions ($\mu\text{g}/\text{m}^2$) across Pennsylvania in 2006.

Annual Mercury Emissions at Major Point Sources in Pennsylvania during 2003

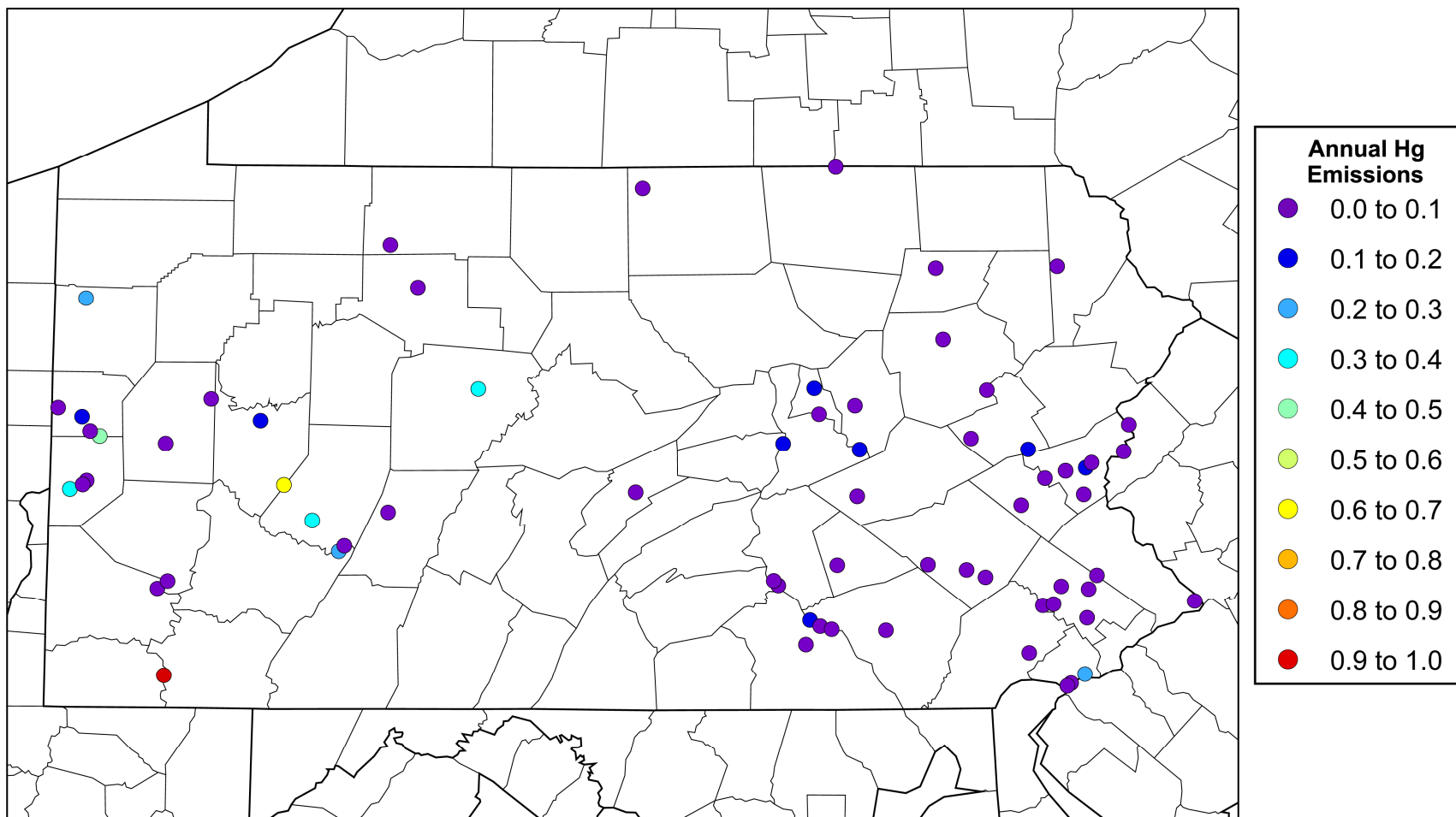


Figure 13. Location of annual mercury emissions (tons/year) at major point sources in Pennsylvania in 2003 through 2006.

Annual Mercury Emissions from Point Sources by County

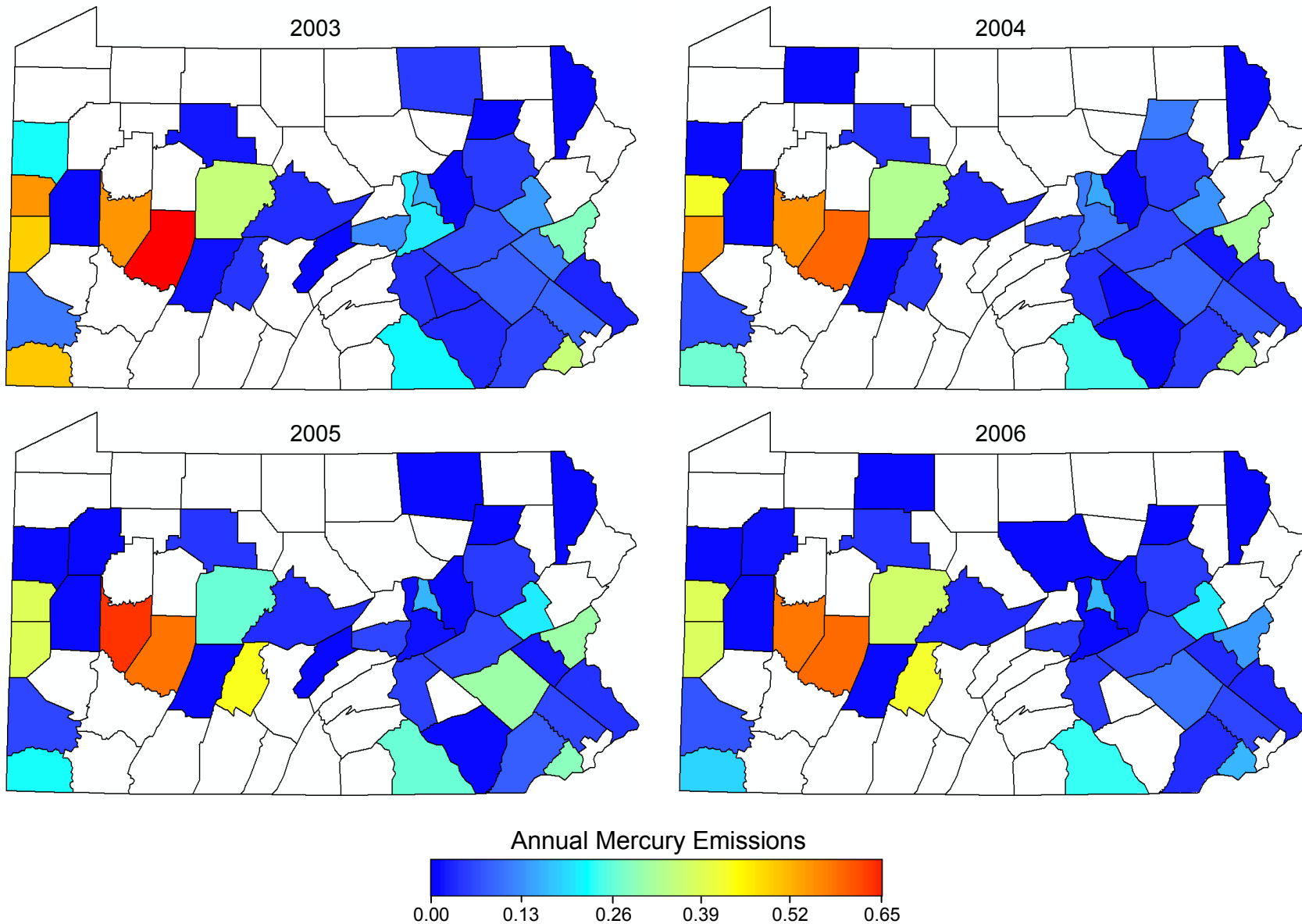


Figure 14. County summary of annual mercury emissions (tons/year) at major point sources in Pennsylvania in 2003 through 2006.

Annual Volume-Weighted Mean Mercury Concentration

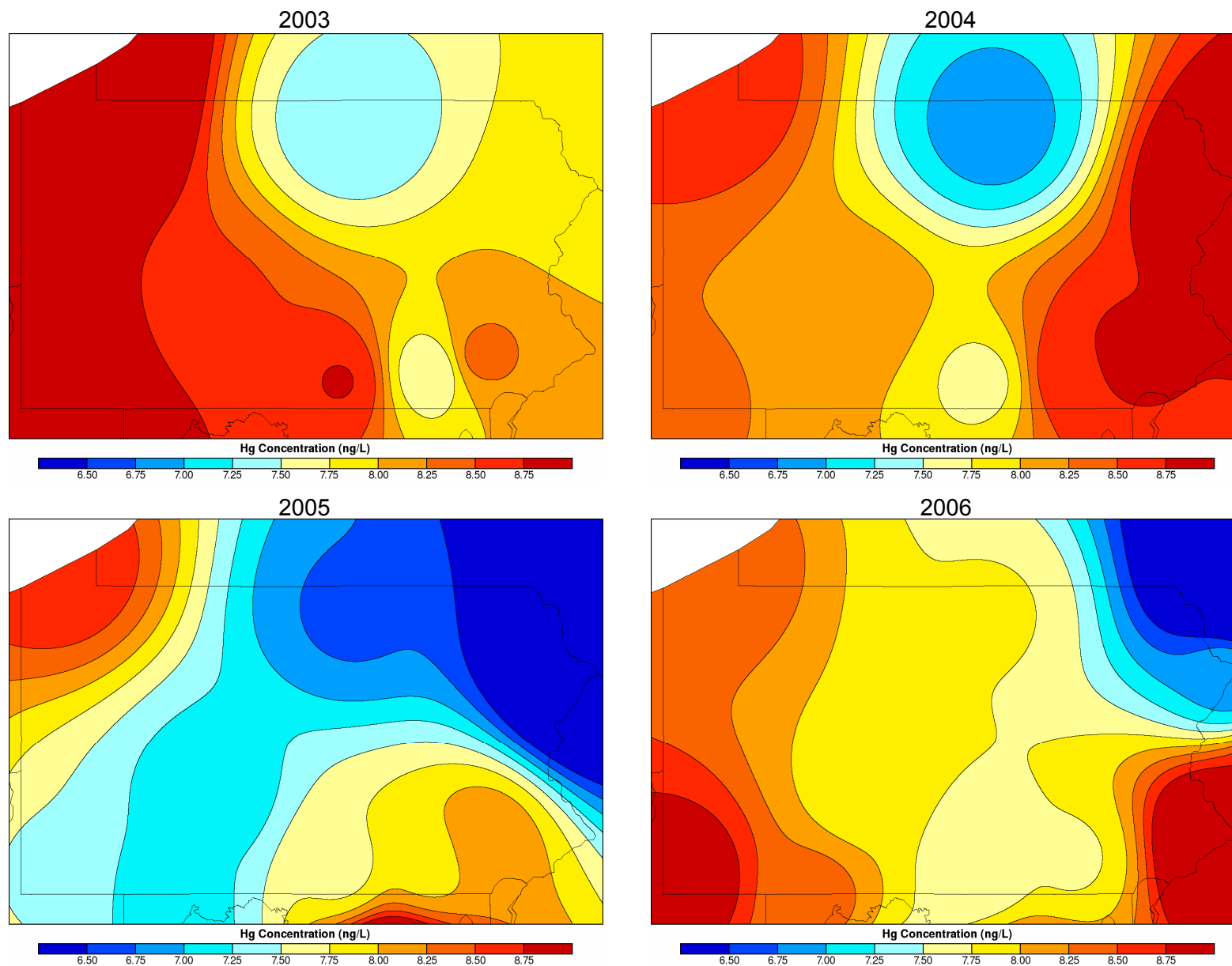


Figure 15. Spatial interpolations of volume-weighted mean annual total mercury concentrations (ng/L) across Pennsylvania in 2003 through 2006.

Annual Mercury Wet Deposition

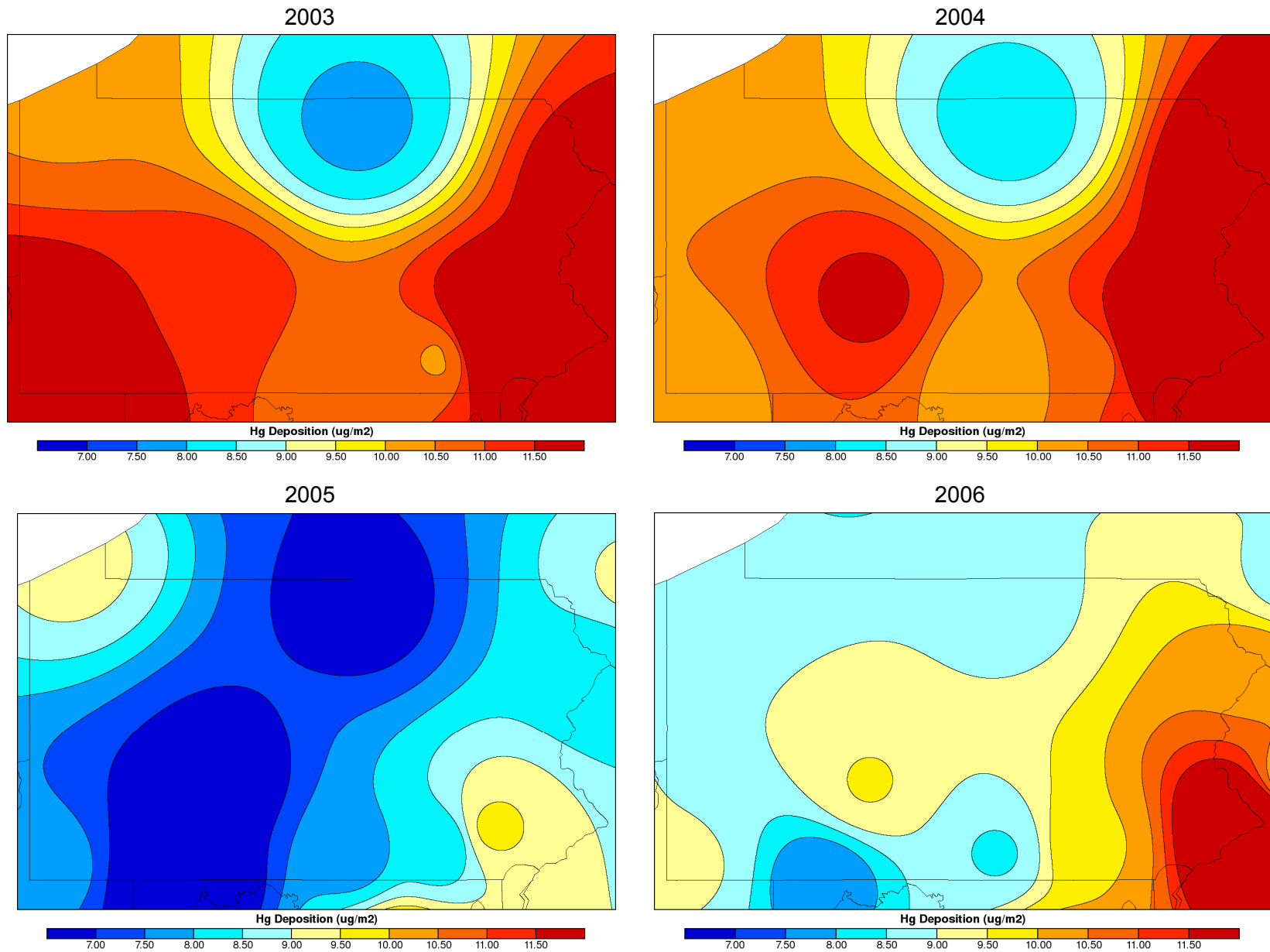


Figure 16. Spatial interpolations of annual total mercury wet deposition across Pennsylvania in 2003 through 2006.

Seasonal Hg Concentration and Precipitation at Hills Creek State Park (PA90)

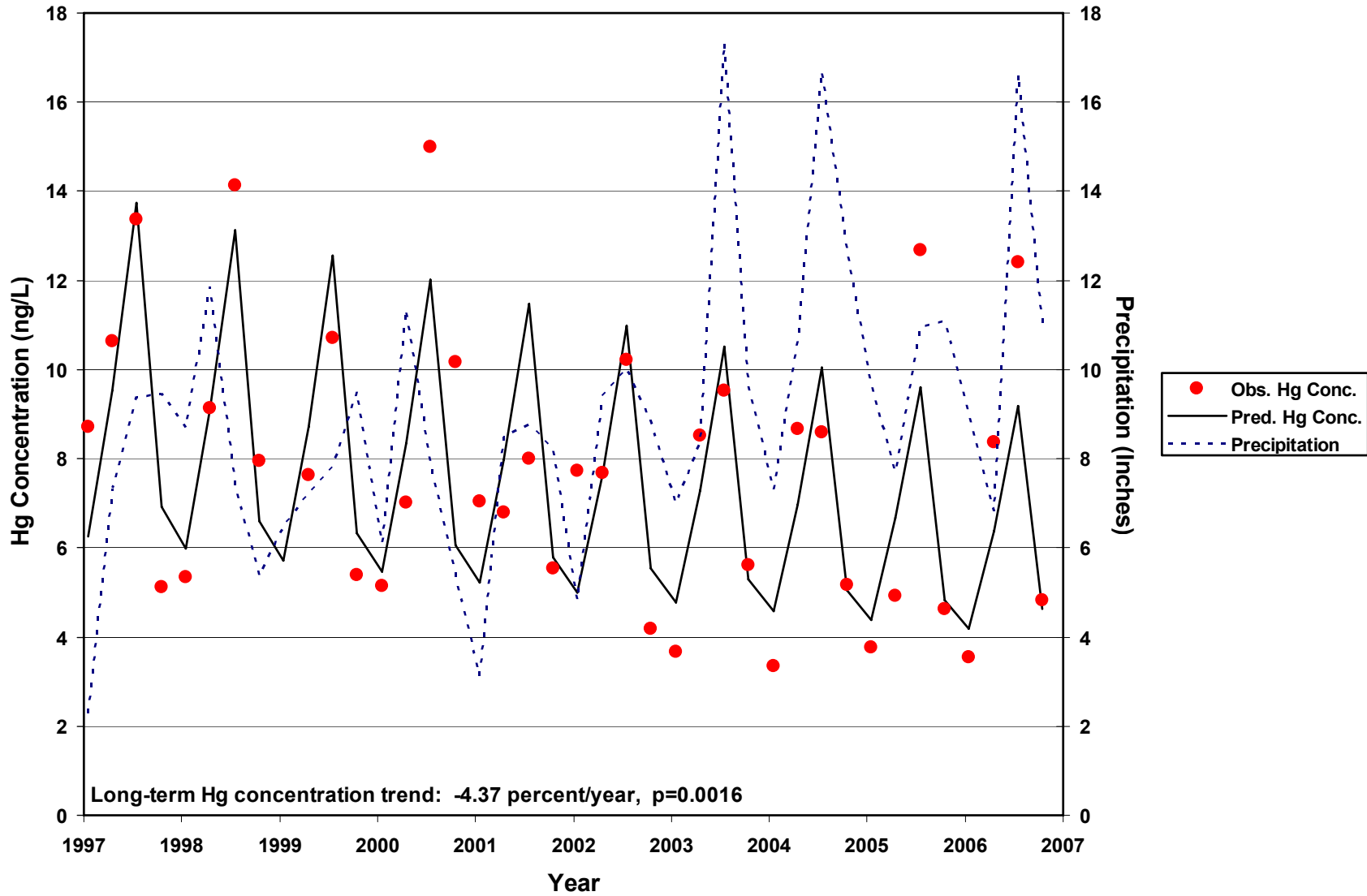


Figure 17. Seasonal trends in total mercury concentrations and precipitation at the Hills Creek State Park MDN site in Tioga County Pennsylvania from 1997 through 2006.

Seasonal Hg Deposition and Precipitation at Hills Creek State Park (PA90)

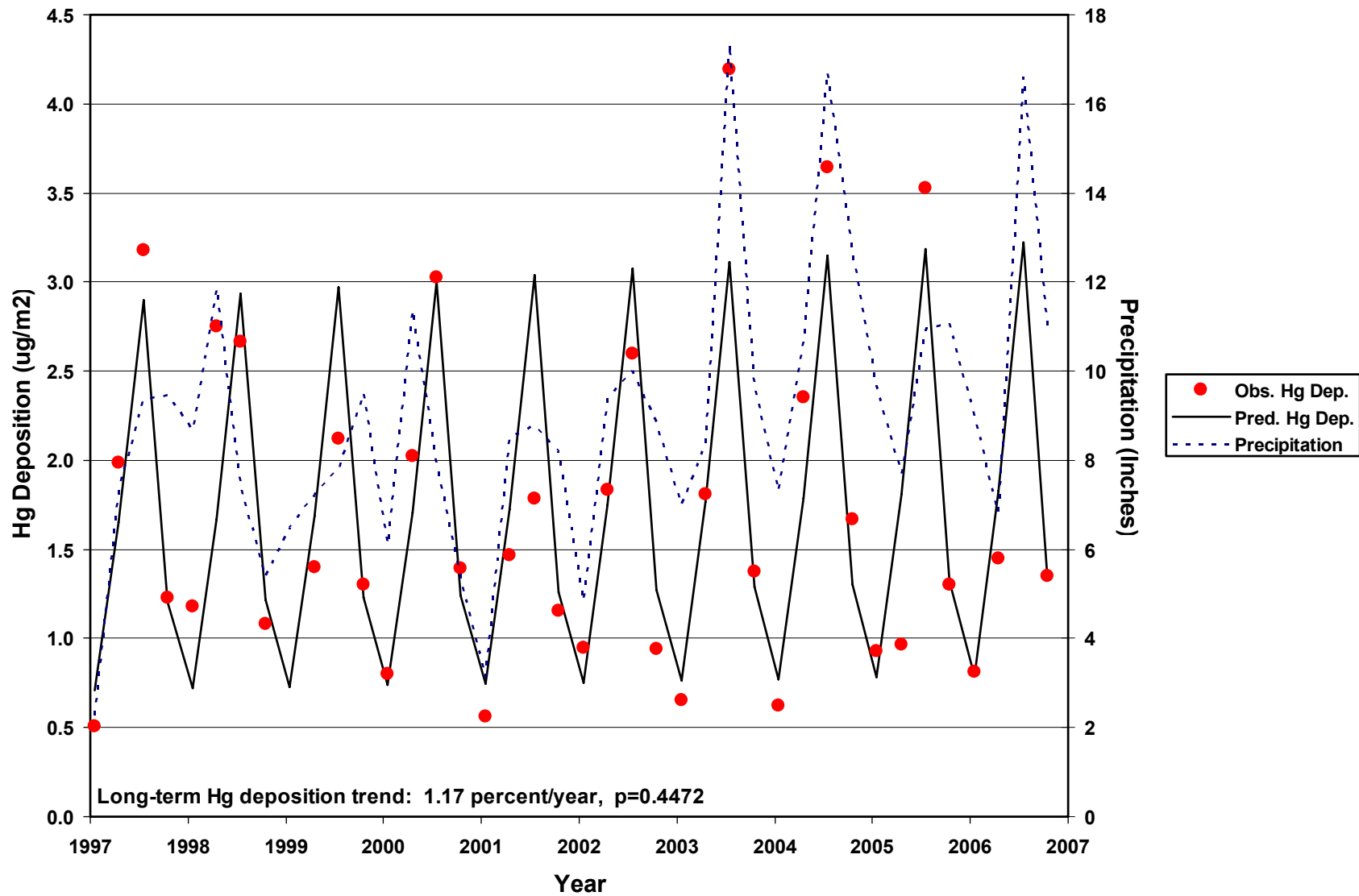


Figure 18. Seasonal trends in total mercury wet deposition and precipitation at the Hills Creek State Park MDN site in Tioga County Pennsylvania from 1997 through 2006.

Seasonal Hg Concentration and Precipitation at Allegheny Portage (PA13)

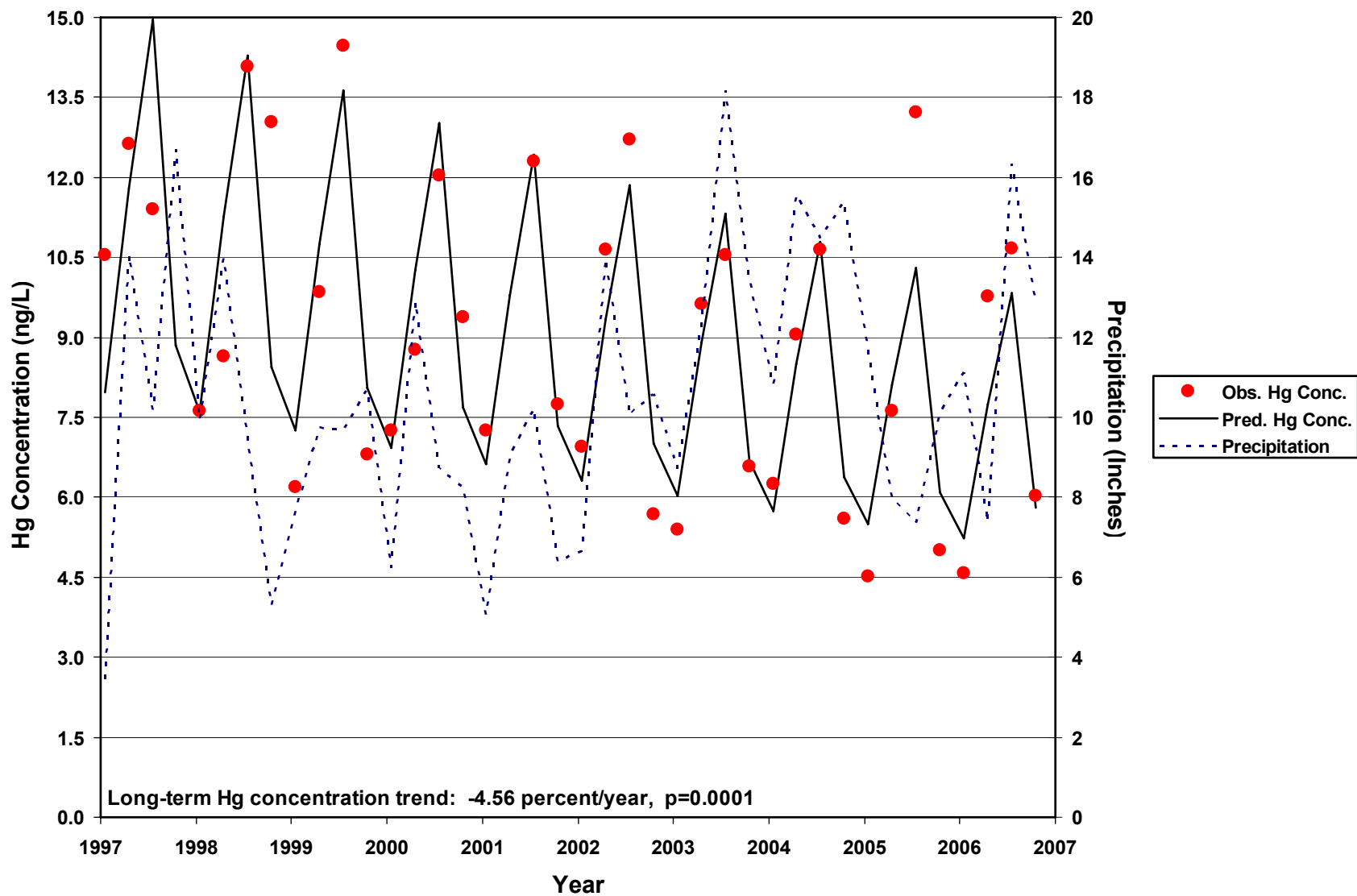


Figure 19. Seasonal trends in total mercury concentrations and precipitation at the Allegheny Portage MDN site in Cambria County Pennsylvania from 1997 through 2006.

Seasonal Hg Deposition and Precipitation at Allegheny Portage (PA13)

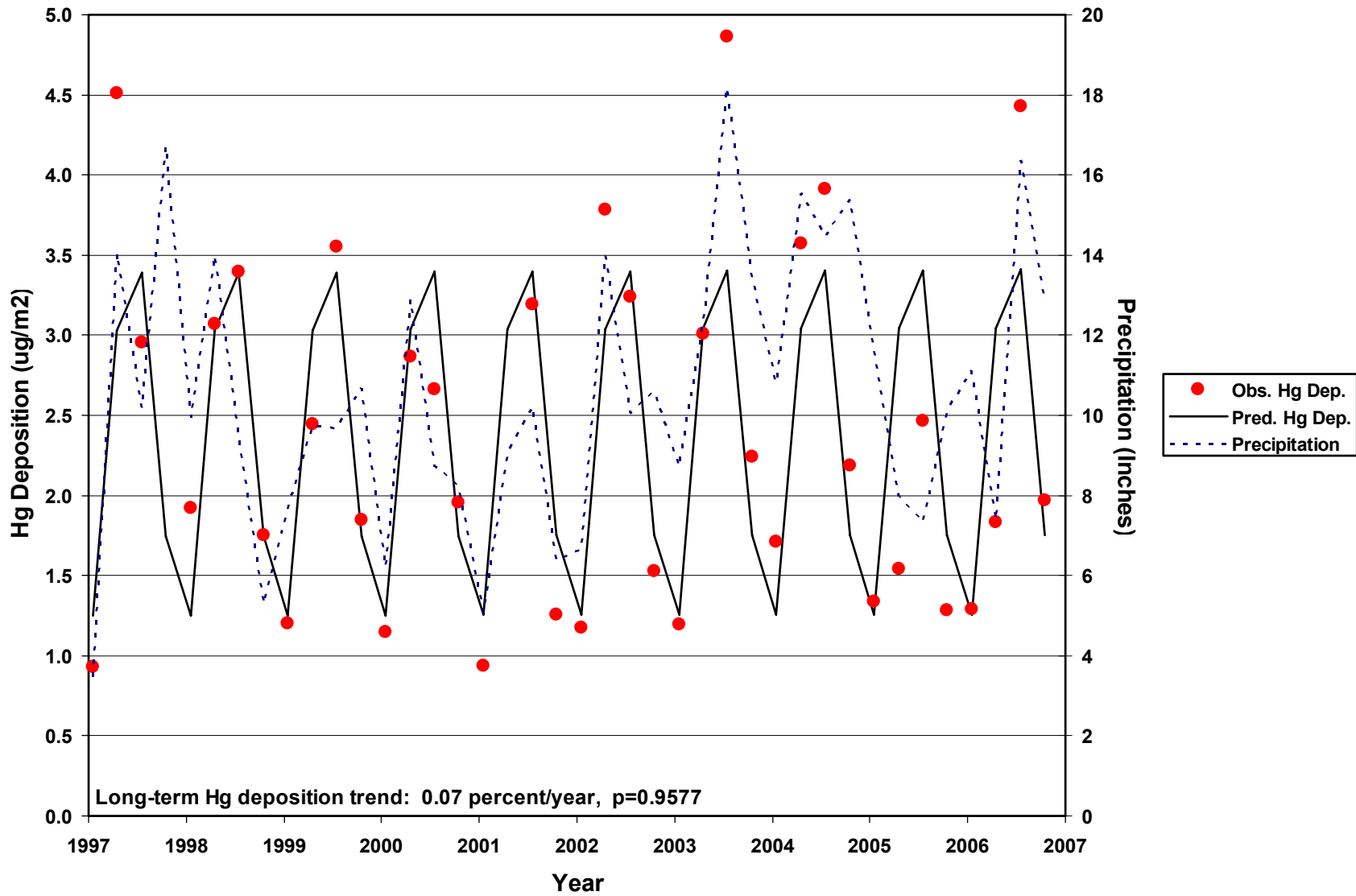


Figure 20. Seasonal trends in total mercury wet deposition and precipitation at the Allegheny Portage MDN site in Cambria County Pennsylvania from 1997 through 2006.

Seasonal Hg Concentration and Precipitation at Holbrook (PA37)

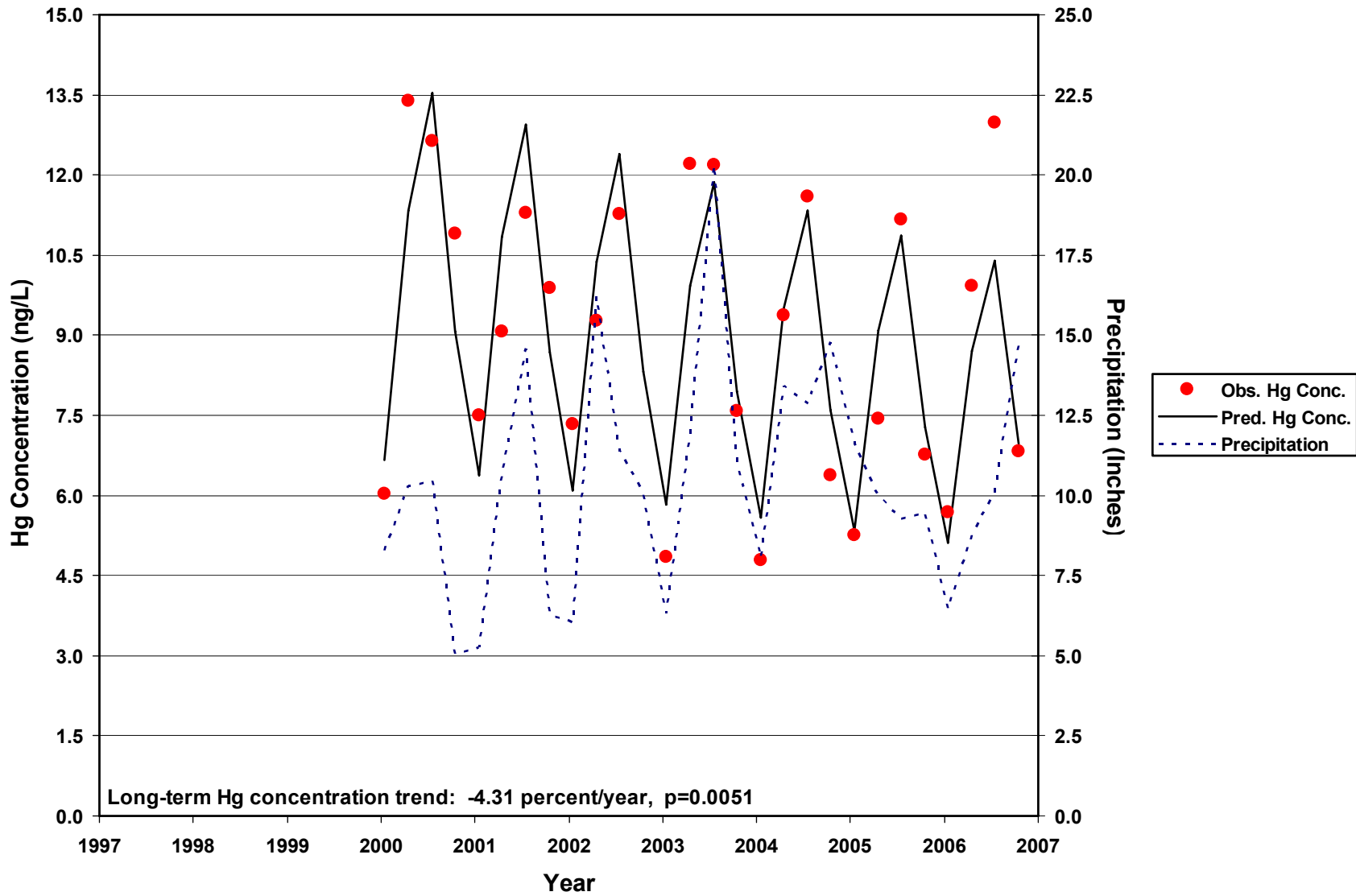


Figure 21. Seasonal trends in total mercury concentrations and precipitation at the Holbrook MDN site in Greene County Pennsylvania from 2000 through 2006.

Seasonal Hg Deposition and Precipitation at Holbrook (PA37)

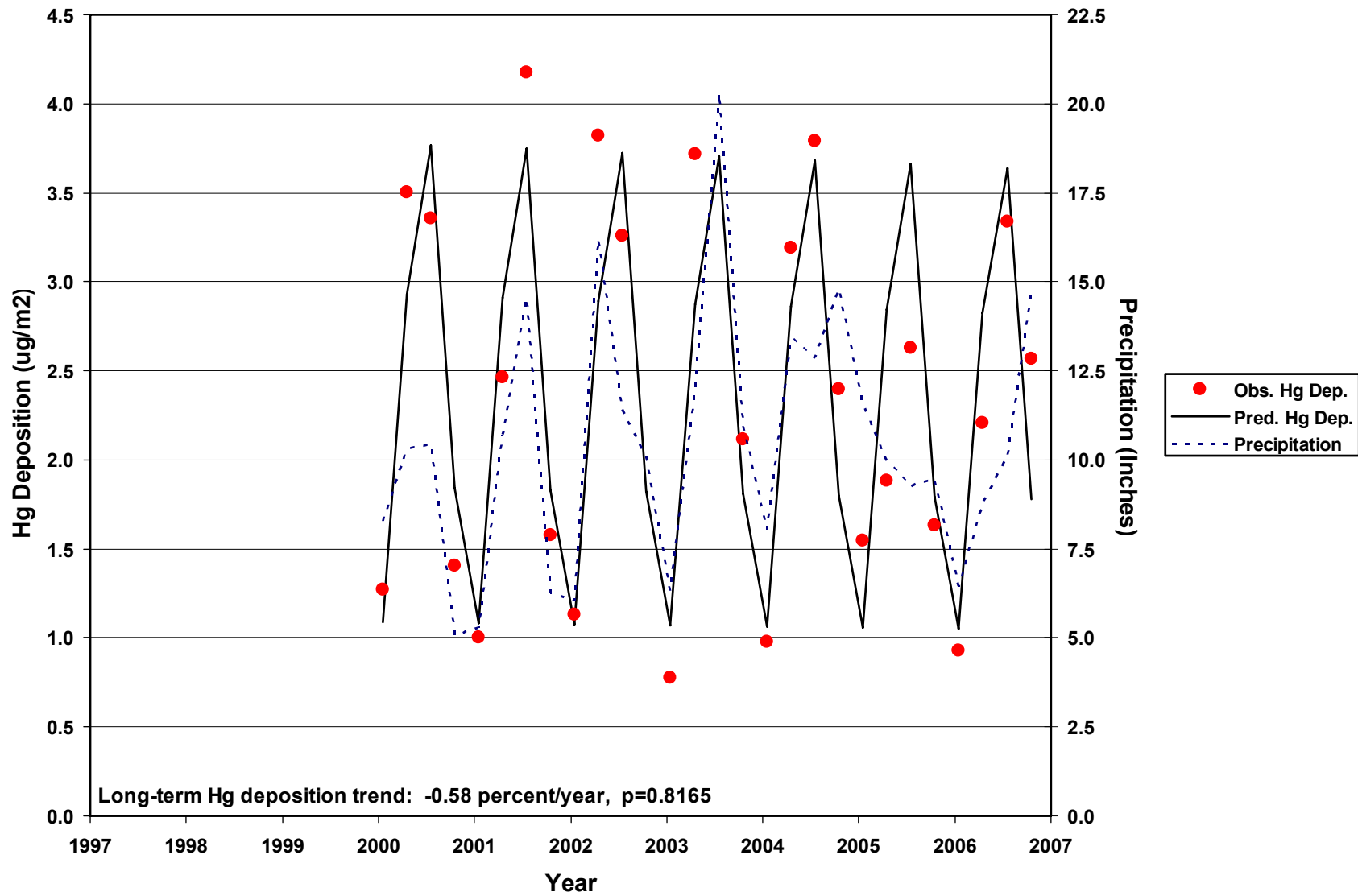


Figure 22. Seasonal trends in total mercury wet depositions and precipitation at the Holbrook MDN site in Greene County Pennsylvania from 2000 through 2006.

Seasonal Hg Concentration and Precipitation at Valley Forge (PA60)

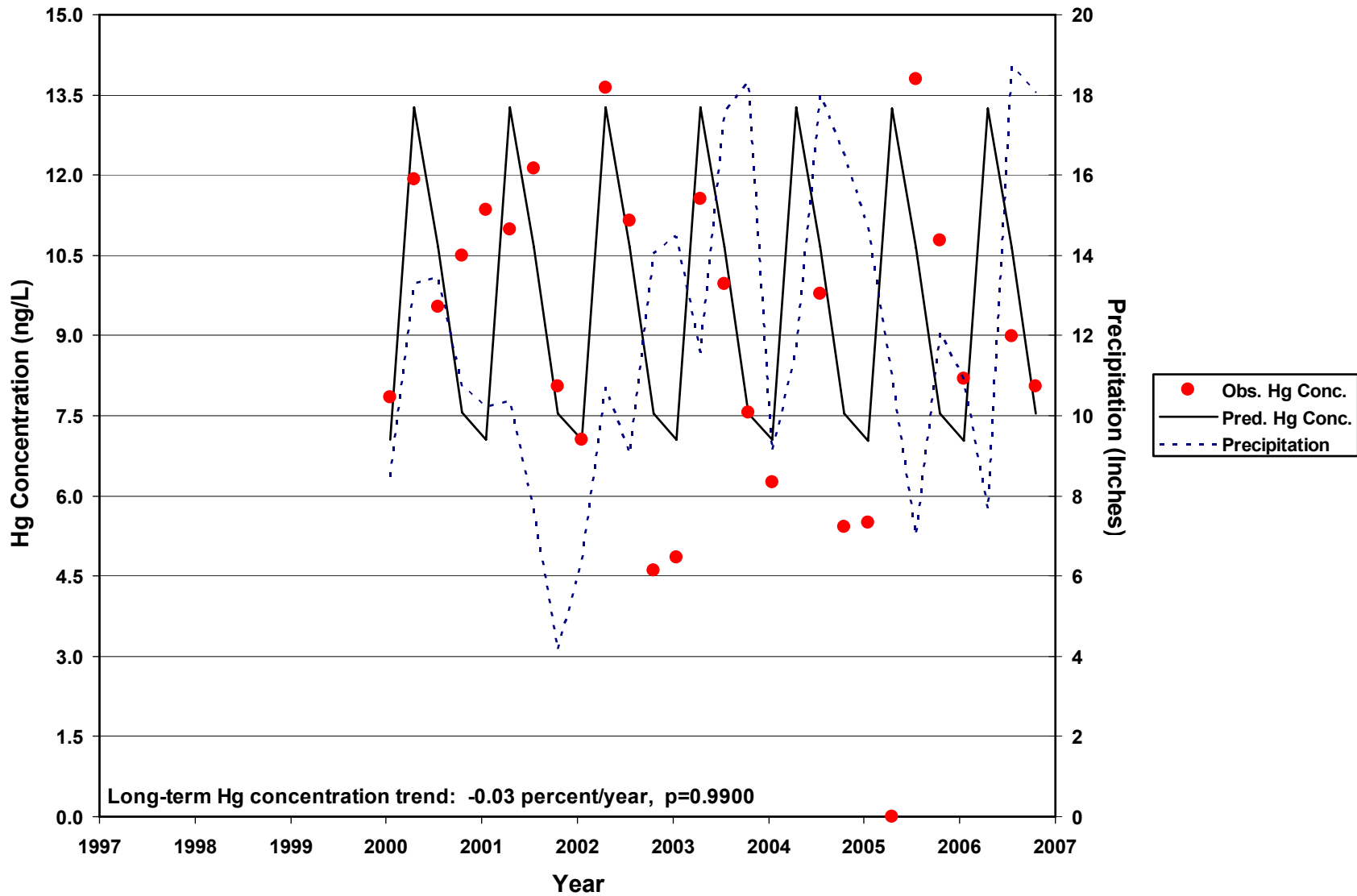


Figure 23. Seasonal trends in total mercury concentrations and precipitation at the Valley Forge MDN site in Montgomery County Pennsylvania from 2000 through 2006.

Seasonal Hg Deposition and Precipitation at Valley Forge (PA60)

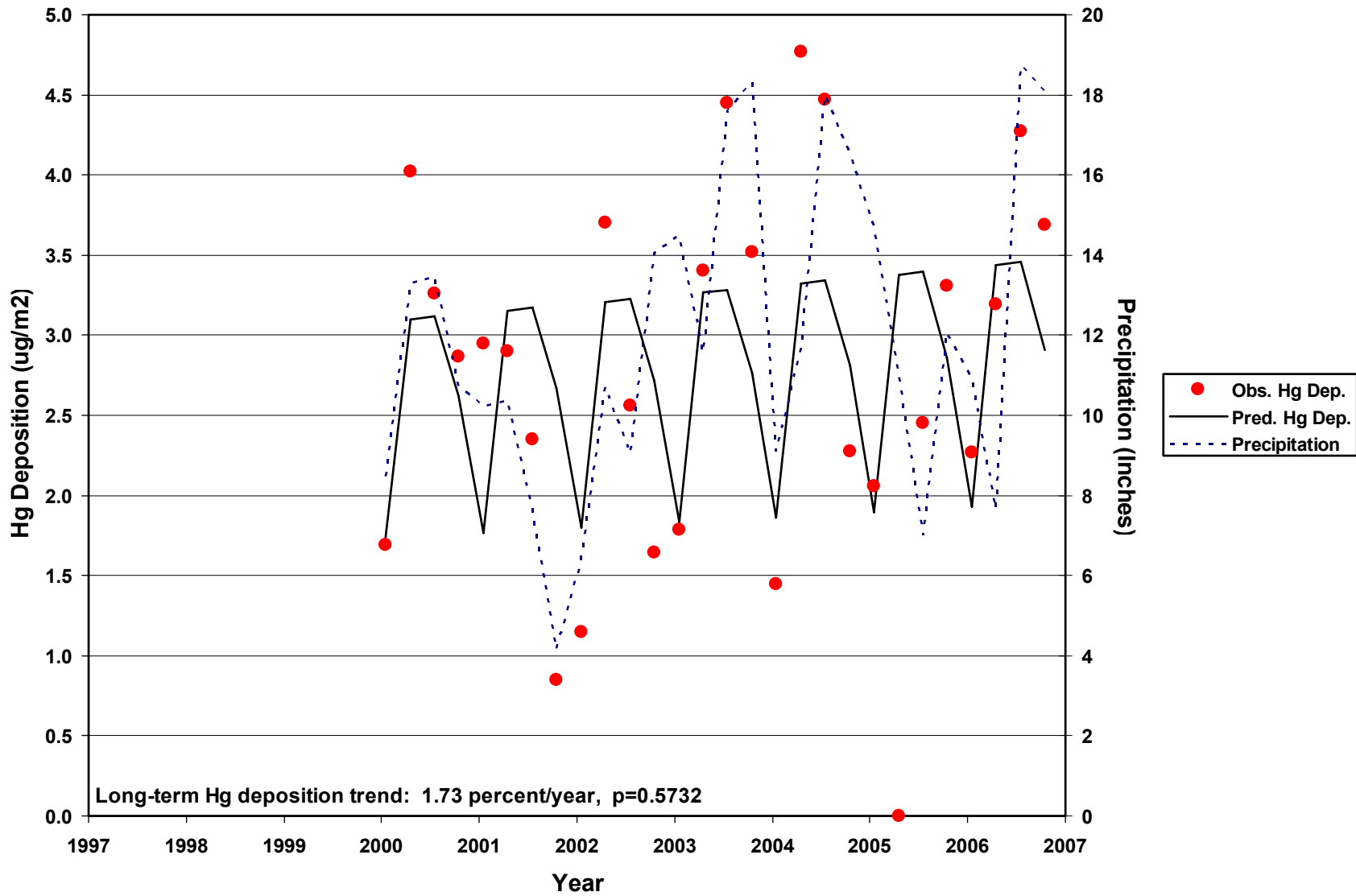


Figure 24. Seasonal trends in total mercury wet deposition and precipitation at the Valley Forge MDN site in Montgomery County Pennsylvania from 2000 through 2006.

Mercury and Sulfate Concentration Trends at PA90

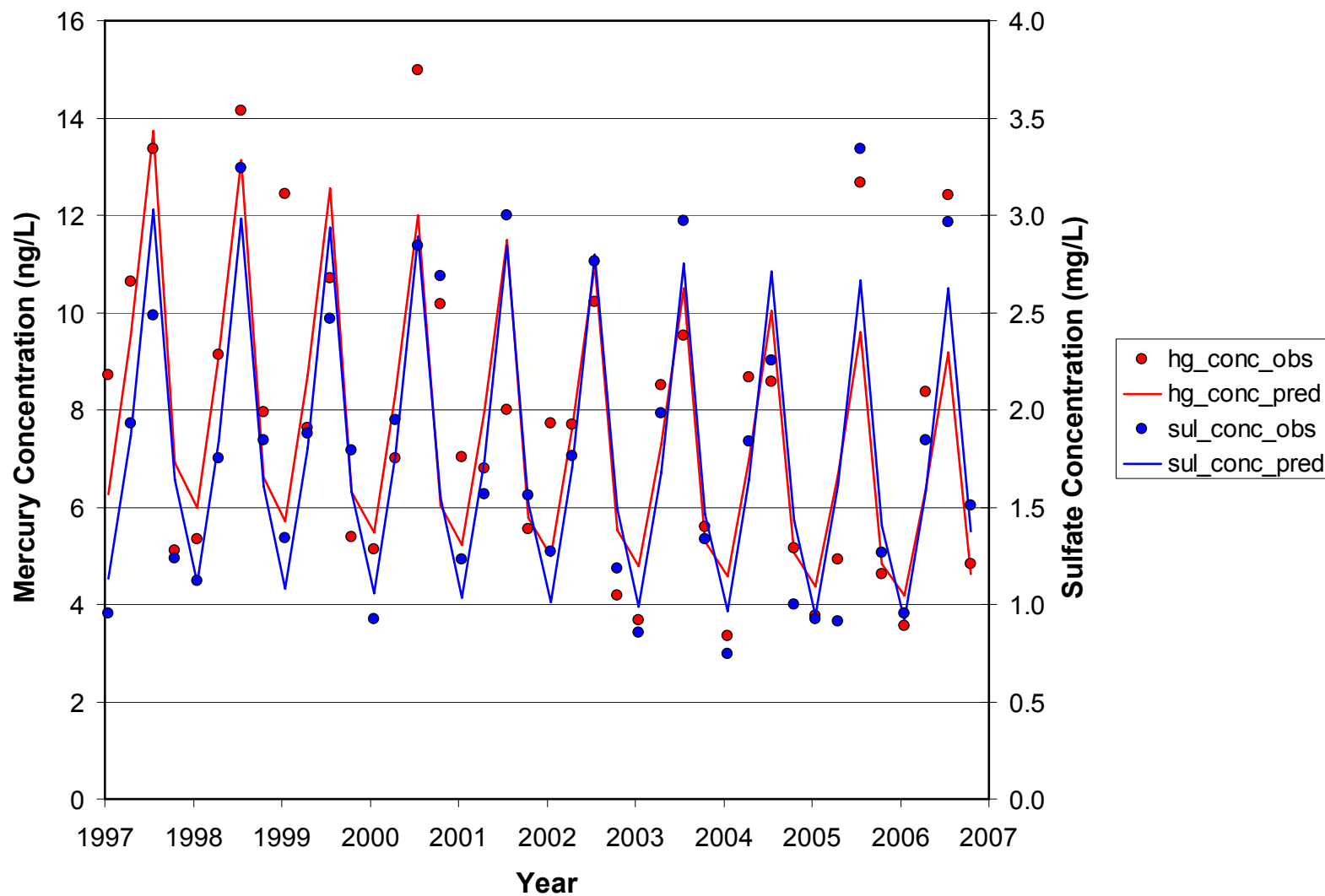


Figure 25. Trends in total mercury and sulfate concentrations at the Hills Creek MDN site (PA90) from 1997 through 2006

Mercury and Sulfate Concentration Trends at PA13

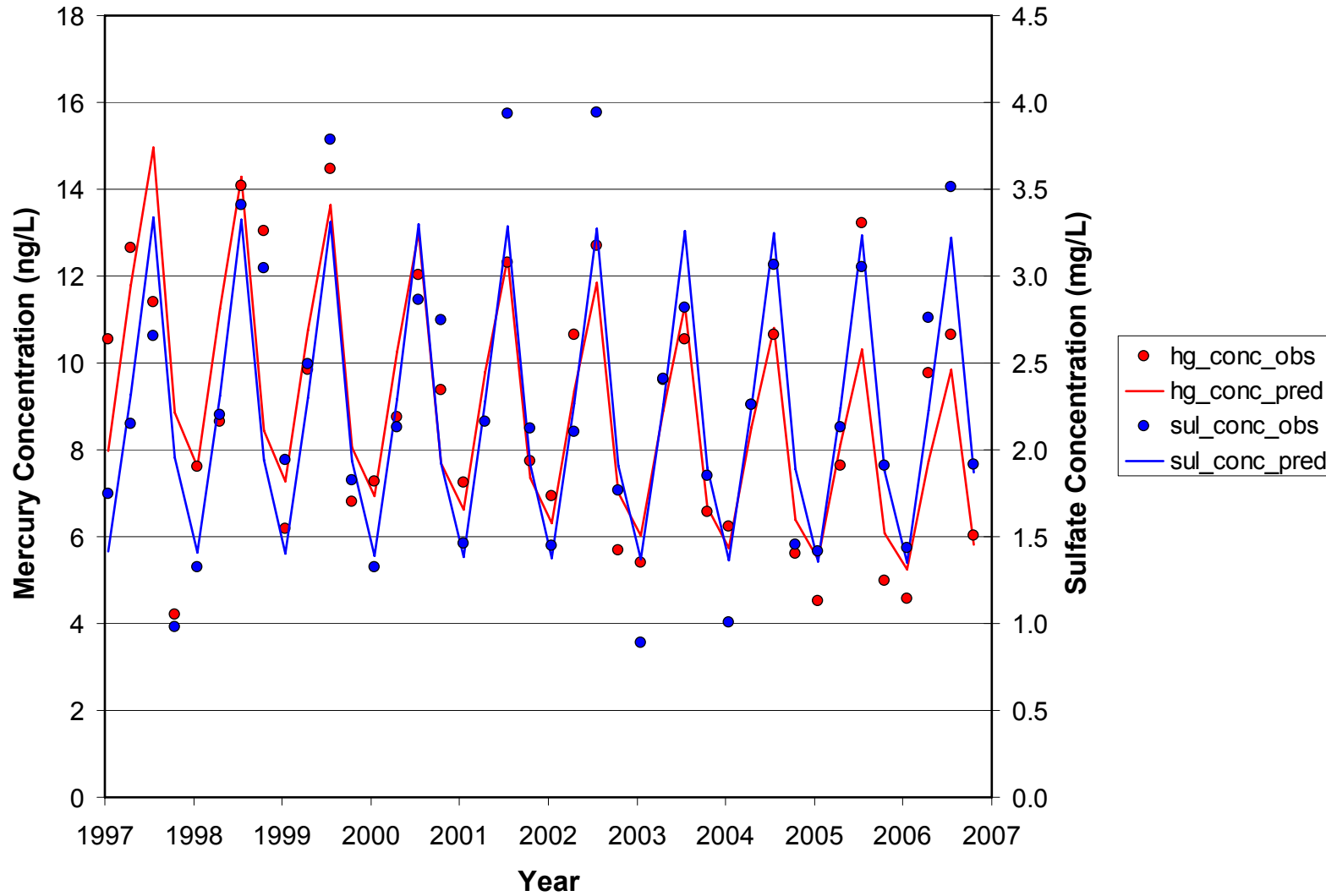


Figure 26. Trends in total mercury and sulfate concentrations at the Allegheny-Portange NHS MDN site (PA13) from 1997 through 2006.

Mercury and Sulfate Concentration Trends at PA37

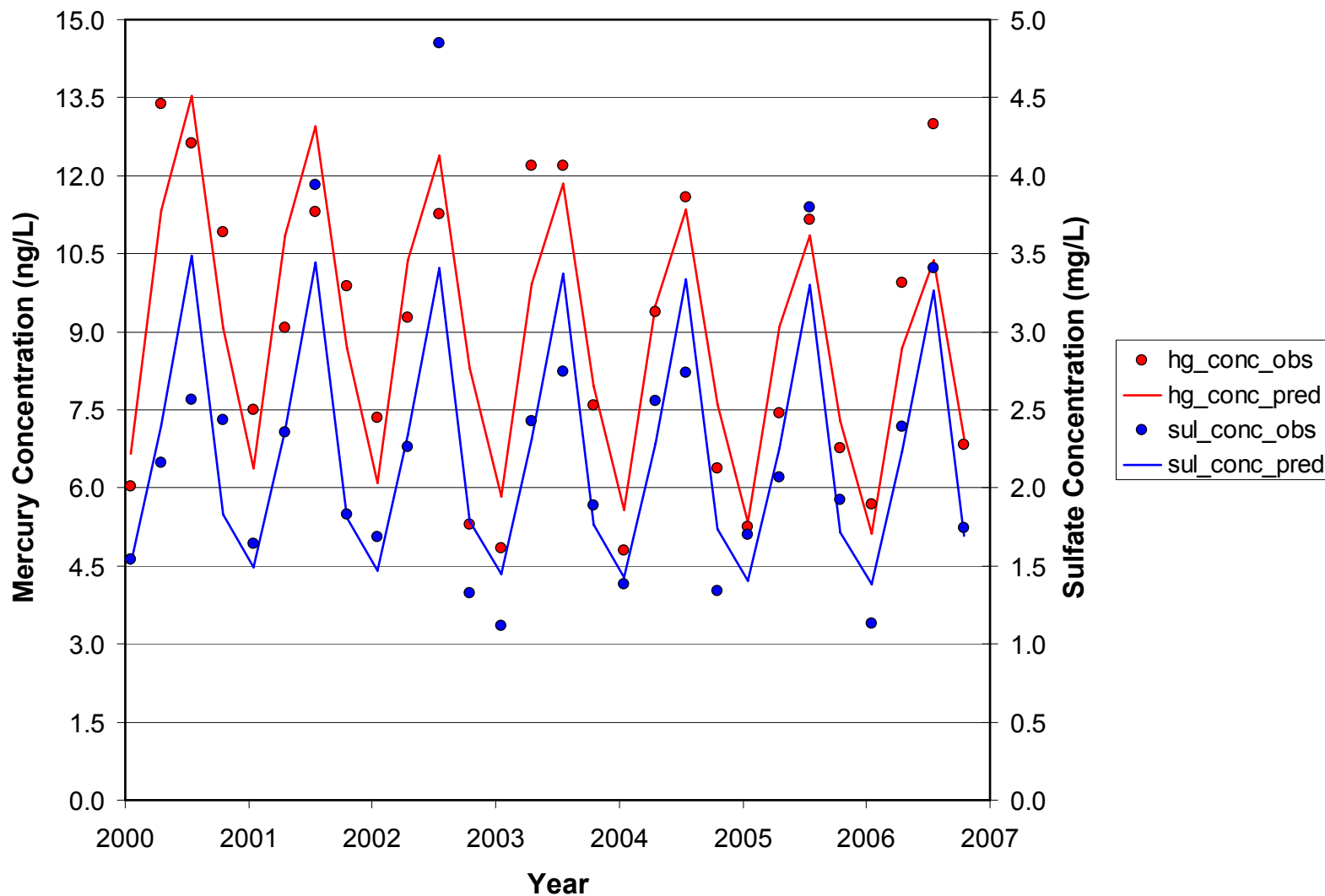


Figure 27. Trends in total mercury and sulfate concentrations at the Holbrook MDN site (PA37) from 2000 through 2006.

Mercury and Sulfate Concentration Trends at PA60

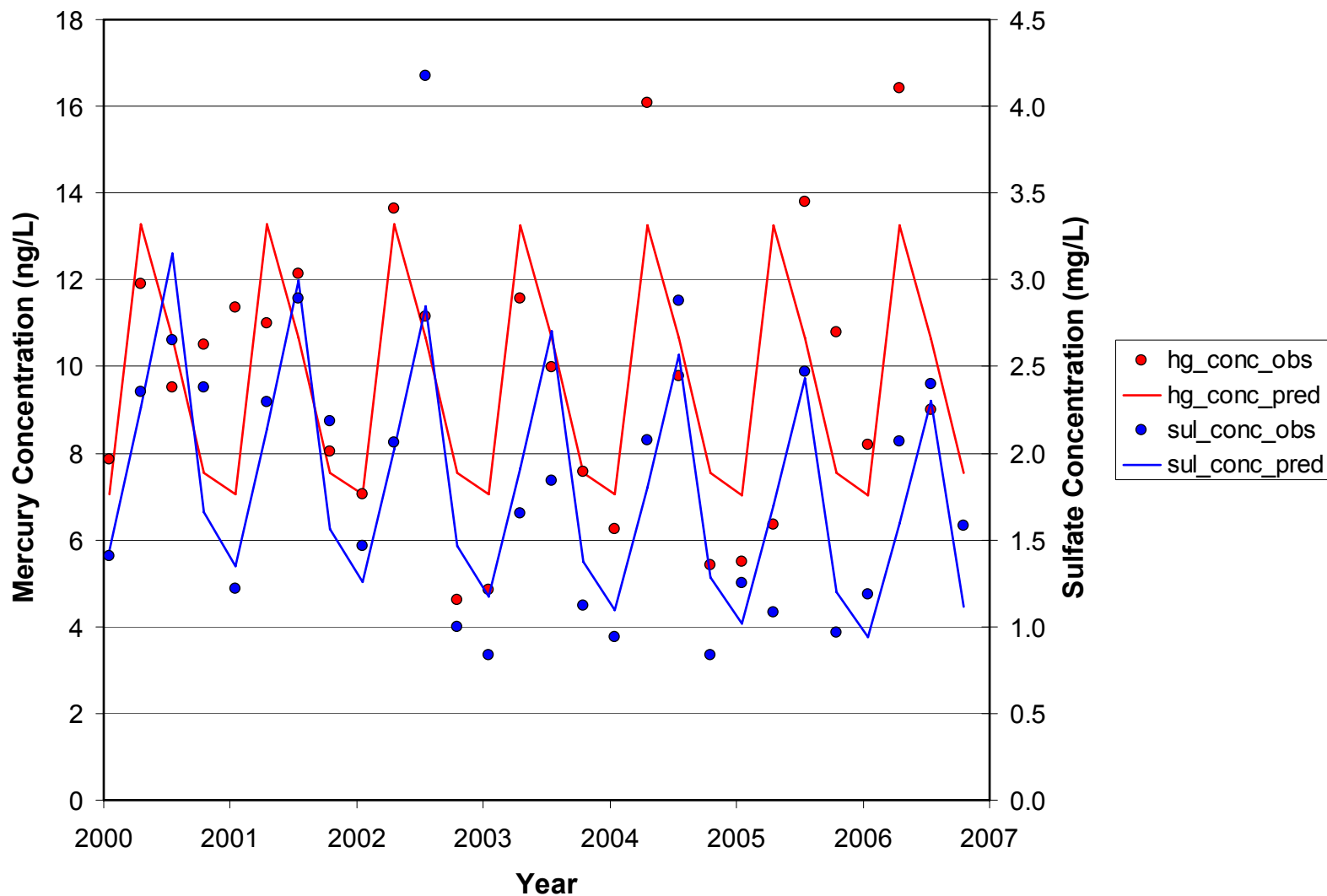


Figure 28. Trends in total mercury and sulfate concentrations at the Valley Forge MDN site (PA60) from 200 through 2006.