



Bureau of Abandoned Mine Reclamation

Planning and Implementation of the 2020 Abandoned Mine Land Economic Revitalization Program in Pennsylvania

(also known as the AML Pilot Program)

Tom Wolf, Governor

Patrick McDonnell, Secretary

AMLER Program Background

The 2020 Abandoned Mine Land Economic Revitalization (AMLER) Program (also known as the AML Pilot Program) was authorized by Congress under the Consolidated Appropriations Act, 2020 (Public Law 116-94) and provides an additional \$25 million of U.S. Treasury funds to Pennsylvania's Abandoned Mine Land (AML) Program.

The funds are to be used “to accelerate the remediation of AML sites with economic and community development end uses.”

Continuation of the AMLER Program

- This is the fifth year that Pennsylvania has received funding from the AMLER Program.
- For FY2020, Pennsylvania along with Kentucky and West Virginia, each received \$25 million of AMLER Program funding, while Ohio, Alabama, and Virginia each received \$10 million, and the Hopi, Navajo, and Crow Indian Tribes each received \$3.33 million.

Continuation of the AMLER Program

- In FY2017, FY2018, and FY 2019, Pennsylvania received \$25 million of AMLER Program Funding.
- In FY2016, Pennsylvania received \$30 million of AMLER Funding.
- More details about the AMLER Program and AMLER Projects in PA can be found on the PA DEP's website at: dep.pa.gov/AML-Pilot

Language from OSMRE Guidance for the 2020 AMLER Program

“State/Tribal AML Programs, in consultation with State/Tribal, local economic and community development authorities, must develop eligible projects that demonstrate a nexus with AML land and water reclamation, and economic and community development”.

Language from OSMRE Guidance for the 2020 AMLER Program

“The AMLER Program offers a non-traditional approach to the reclamation of impacted mine lands. A uniform approach is not expected in every State/Tribe”.

“The AMLER Program offers States, Tribes, and local communities flexibility in deciding which projects offer the greatest opportunities within their communities”.

Language from OSMRE Guidance for the 2020 AMLER Program

Economic and Community Development Nexus Category Project Definitions:

“Category A” Projects (Reclamation with Development):

“This is a project intended to include economic and community development related activities as part of the project itself, as well as reclamation activities, likely to result in positive economic and community development outcomes that can be measured”.

“Category B” Projects (Reclamation for Potential Development):

“This is a project reasonably likely to create favorable conditions for the economic development of the project site or promote the general welfare through economic and community development of the area in which the project is conducted”.

Use of AMLER Program Funds

- States, Tribes, and local communities have the flexibility to use AMLER Program funds for both the reclamation of impacted lands and waters and brick and mortar needs related to the end-use development project.
- The AMLER Program offers maximum flexibility in this regard, letting States, Tribes, and local communities balance the needs of an individual project with the ability to fund other priority Pilot projects.
- “Guidance for Project Eligibility under the Abandoned Mine Reclamation Economic Development Pilot Program for Fiscal Year 2020” was released by the federal Office of Surface Mining Reclamation and Enforcement (OSMRE) of in the fall of 2020.

AMLER Project Selection Procedure

- Due to unresolved issues related to complying with both federal and state regulations and requirements governing these types of federal grant funds, PA did not solicit proposals for 2020 AMLER Program projects.
- However, two of the 20 proposals from the 2019 AMLER solicitation were reevaluated and selected for design by the Department and issued for competitive bid.
- Eleven additional sites were selected based upon official inquiry from the general public and were evaluated using the Guidance and for project costs and benefits.

AMLER Project Selection Procedure

- A total 13 of AMLER Program projects (9 Bituminous and 4 Anthracite), located in 10 coal field counties and with a wide variety of project types and several economic and community development benefits, are proposed.
- Two (2) contingent projects have been proposed in the event any of the 13 originally proposed AMLER Projects are delayed or suspended.
- Starting during April of 2021, PA began submitting 2020 AMLER Program Project vetting documents to OSMRE for economic revitalization review.

AMLER Program Proposed Projects

By December 8, 2021, OSMRE had approved the 13 proposed 2020 AMLER Program Projects vetting documents.

AMLER Grant Application Timeline

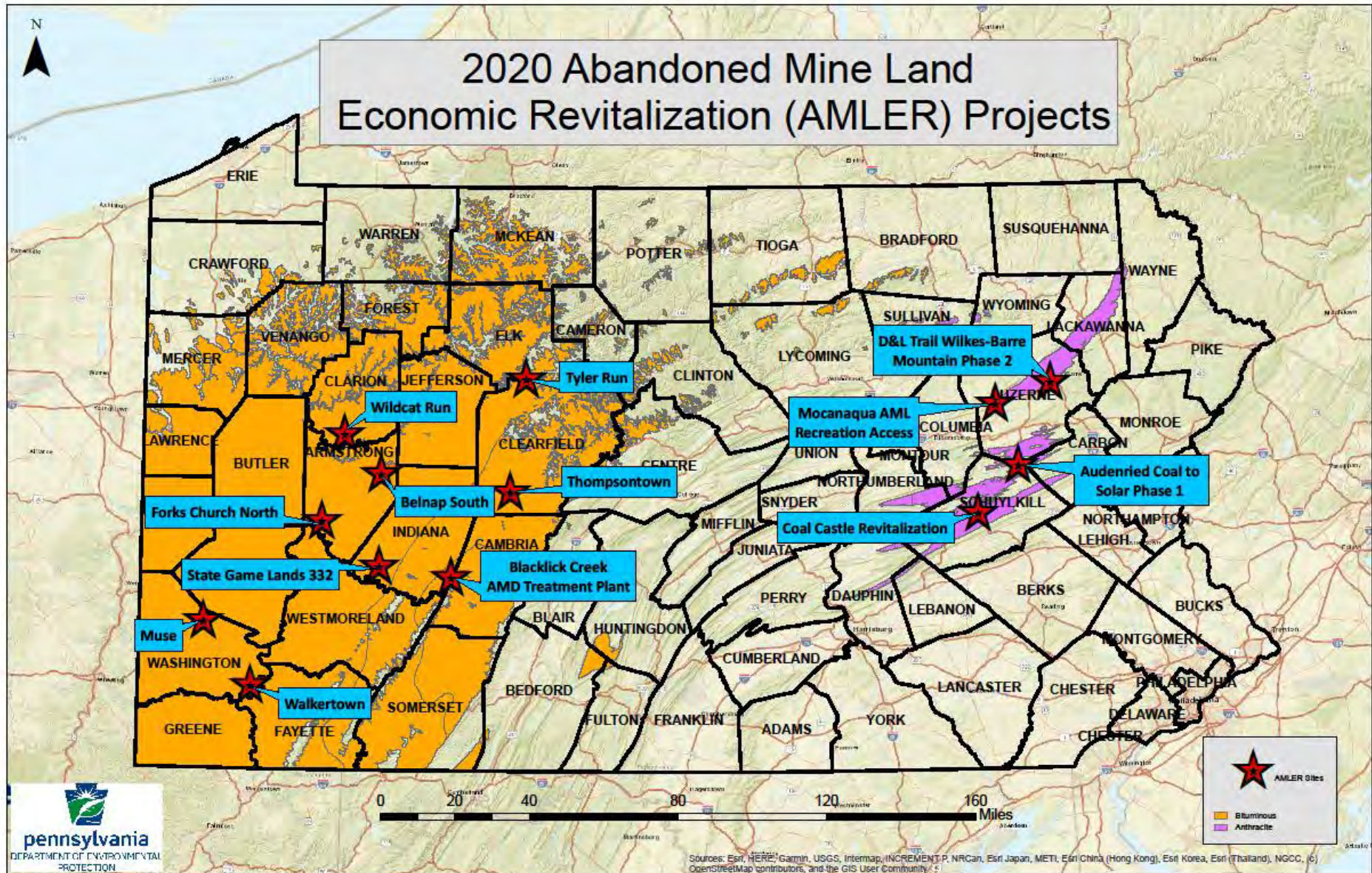
PA's application for the 2020 AMLER Program Grant was submitted on April 13, 2021 and was approved on June 1, 2021. The grant's period of performance is June 1, 2021 through May 31, 2024.

AMLER Program Project Types

The 13 AMLER Program Projects being funded include:

- One Active AMD Treatment Stream restoration project
- Nine Surface Mine reclamation projects with Industrial, Agricultural, or Recreational Benefits
- Three Coal Refuse Pile reclamation projects with Industrial or Recreational Benefits

2020 AMLER Projects Location Map



Significant Benefits

In addition to eliminating several high-priority AML/AMD features, benefits of the projects include:

- Significant stream thermal and water quality improvement including restored fisheries
- Recreational hunting on public lands
- Multi-use recreational trails
- Parking area adjacent to public lands for access for recreational hunting
- Community multipurpose recreational park
- Site improvements of a fishery

Significant Benefits

- Recreational site access road improvements, parking area, and historic information kiosks
- Agricultural farmland for hay production
- Site development of solar panel facility
- Site for a campground office and welcome center with camping facilities
- Commercial/industrial development site
- Multi-use green space to be used for recreational and camping purposes
- Site for a storage unit facility

Pennsylvania's 2020 AMLER Program Projects

No.	2020 AMLER Project Name	County	Municipality	Total Project Estimated Cost	AMLER Funding (ED-03 Non-Water Supply Rec.)	Other Known Sources of Funding	AML Funding
1	Blacklick Creek AMD Treatment Plant	Indiana and Cambria	Buffington Township, Indiana County Blacklick Township, Cambria County	\$26,158,499 (As-Bid)	\$8,900,470	\$14,000,000 PA Capital Budget	\$3,258,029 AMD Set-Aside
2	State Game Lands 332	Indiana	Young Township	\$3,200,000	\$3,200,000		
3	D&L Trail Wilkes-Barre Mountain - Phase 2	Luzerne	City of Wilkes-Barre, Plains Township, Laurel Run Borough	\$1,200,000	\$941,000		\$259,000
4	Tyler Run	Elk	Fox Township	\$476,000	\$476,000		
5	Walkertown	Washington	West Pike Run Township	\$1,550,000	\$1,550,000		
6	Mocanaqua AML Recreation Access	Luzerne	Conyngham and Newport Townships	\$850,000	\$850,000		

Pennsylvania's 2020 AMLER Program Projects

No.	2020 AMLER Project Name	County	Municipality	Total Project Estimated Cost	AMLER Funding (ED-03 Non-Water Supply Rec.)	Other Known Sources of Funding	AML Funding
7	Audenried Coal to Solar - Phase 1	Luzerne and Schuylkill	Hazle Township, Luzerne County Kline Township, Schuylkill County	\$6,200,000	\$3,950,000		\$2,250,000
8	Belnap South	Armstrong	Wayne Township	\$350,000	\$350,000		
9	Coal Castle Revitalization	Schuylkill	New Castle Township	\$2,250,000	\$1,500,000		\$750,000
10	Forks Church North	Armstrong	Gilpin Township	\$920,000	\$420,000		\$500,000
11	Muse	Washington	Cecil Township	\$1,291,530	\$1,291,530		
12	Wildcat Run	Clarion	Madison Township	\$571,000	\$571,000		
13	Thompstontown	Clearfield	Chest Township	\$1,000,000	\$1,000,000		

Blacklick Creek AMD Treatment Plant

The Blacklick Creek Treatment Facility (BCTF) (Wehrum Acid Mine Drainage Treatment Facility) project addresses three (3) acid mine drainage (AMD) discharges including:

1. The Commercial No. 16 (Red Mill) discharge
2. The Vinton No. 6 mine discharge
3. The Wehrum mine discharge

The combined waters of these mine pools will be pumped to the BCTF, a centralized 7.2 million gallons per day treatment facility located in Buffington Township, Indiana County, where it will be treated prior to being discharged into the main stem of Blacklick Creek.

The BCTF will incorporate a flow equalization, clarifier, reactor, and sludge-holding basins/tanks together with sludge recirculating technology. Active chemical treatment is anticipated to consist of pre-aeration, hydrated lime, peroxide or other appropriate treatment chemicals and methodologies.

Stabilized inorganic precipitants generated during treatment are anticipated to be pumped to a portion of the Wehrum Mine. The BCTF will be constructed on 28 acres of previously reclaimed abandoned mine lands (AML) located within Problem Area 2722.

Blacklick Creek AMD Treatment Plant



Commercial #16 Discharge

Blacklick Creek AMD Treatment Plant



Wehrum Shaft Discharge

Blacklick Creek AMD Treatment Plant



Vinton #6 Discharge (3 boreholes)



Blacklick Creek AMD Treatment Plant

Project Cost and Funding Sources

Estimated Cost: \$26,158,499 (As-Bid)

- AMLER (Non-Water Supply Project): \$8,900,470
- Regular AML Funding: \$0
- Regular AMD Funding: \$3,258,029
- Other Known Funding: \$14,000,000 (PA Capital Budget)

Blacklick Creek AMD Treatment Plant

AML/AMD Measurables

- AMD treatment facility constructed to handle 7.2 million gallons per day
- Three AMD discharges eliminated
- 25 miles of Blacklick Creek restored for fishing and boating

Blacklick Creek AMD Treatment Plant

AMLER Measurables

- Increased visitors to the Blacklick Creek and Ghost Town Trail
- Access for future parking for use of the restored Blacklick Creek and Ghost Town Trail
- Increased spending at local businesses

Blacklick Creek AMD Treatment Plant

Project Partners

- Office of Surface Mining Reclamation and Enforcement
- Pennsylvania Department of Environmental Protection
- Cambria County Conservation and Recreation Authority
- Indiana County
- Indiana County Conservation District
- Blacklick Creek Watershed Association
- Cambria County Conservation District
- C&I Trail Council

State Game Lands 332

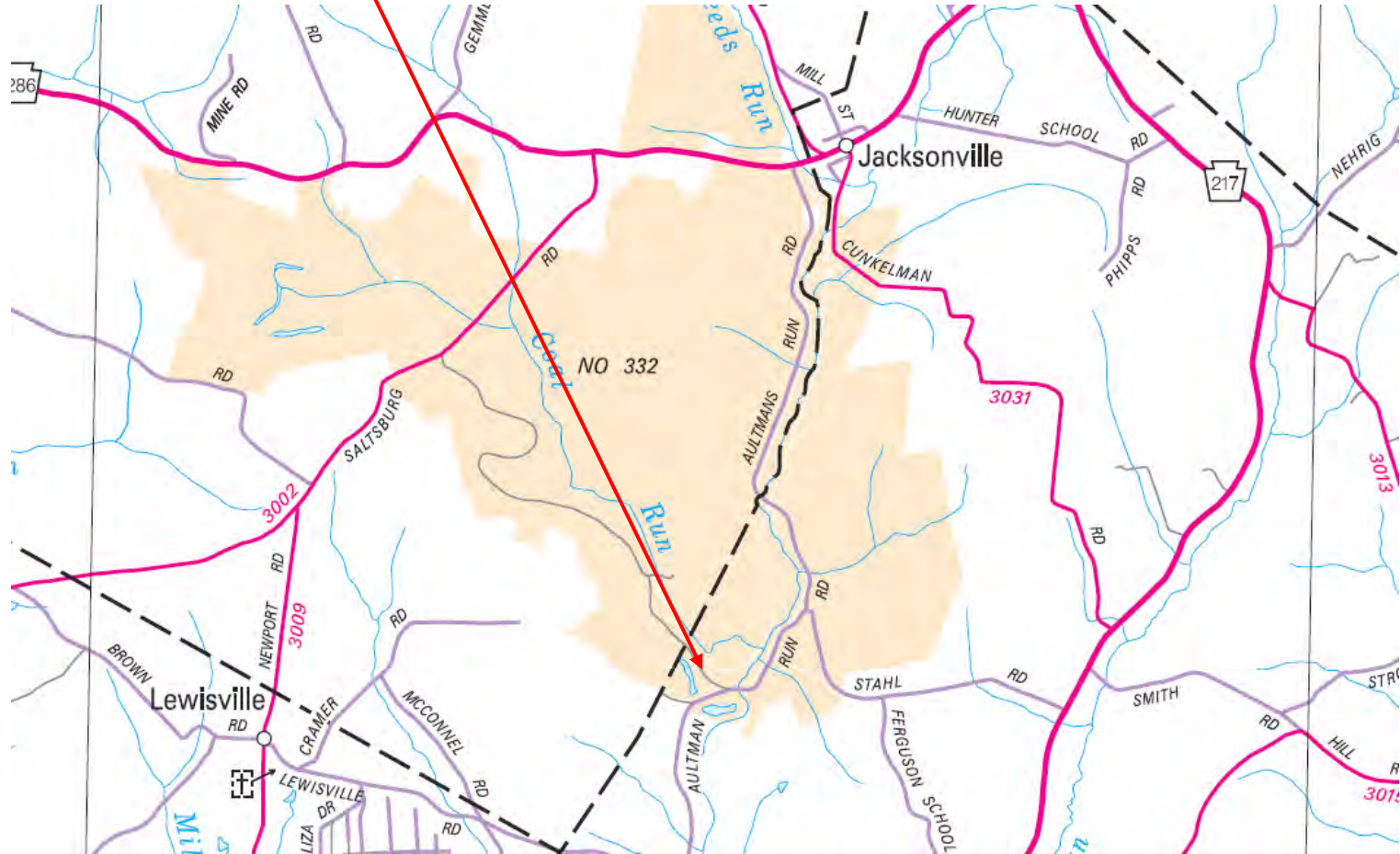
Two dangerous highwalls (DH) measuring 30-70 feet high and 1,800-4,000 feet long, the associated 54-acre spoil areas (SA), and two water (WA) acid mine drainage (AMD) pollution problems emptying into Neal Run will be reclaimed as a result of the Project. The SA, consisting of mine spoil, will be used to backfill the DH and the remaining mine spoil will be graded on site to eliminate any health and safety hazards. A PA DEP-approved alkaline addition will be added to neutralize soil acidity and re-establish vegetation suitable for game species. The two AMD discharges will be rerouted for passive treatment. A total of 79 acres will be reclaimed through the Project.

As a Category A AMLER Program project, these AML reclaimed areas will be repurposed as state game lands and combined with adjacent state game land to improve approximately 100 acres of state game lands. Upon completion of the Project the land will immediately be available for recreational hunting.

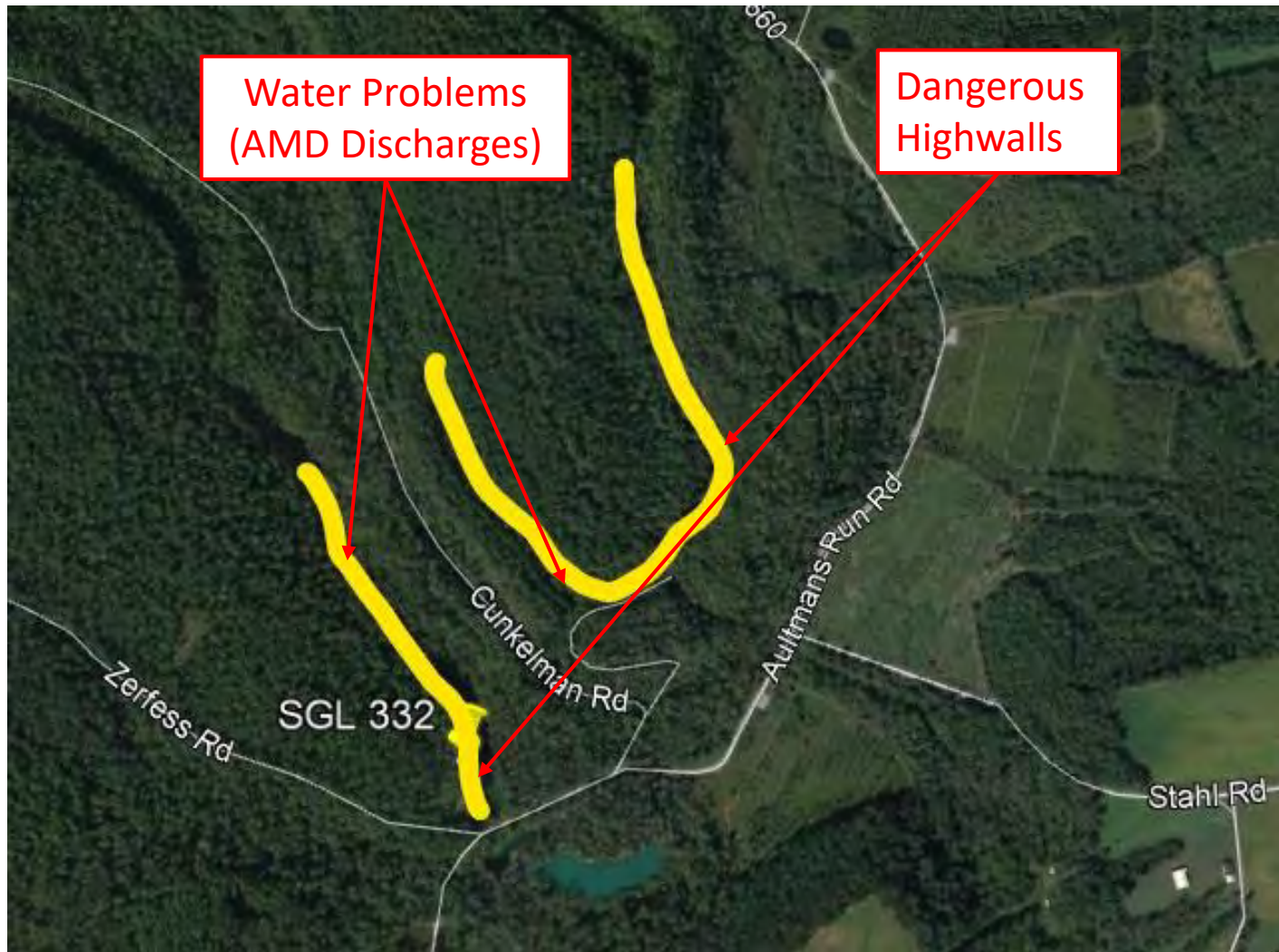
Many of the visitors to this area are from the Greater Pittsburgh Region and are utilizing the many businesses along the U.S. 22 corridor for food, gas, and lodging.

State Game Lands 332

Project Location



State Game Lands 332



State Game Lands 332



State Game Lands 332



State Game Lands 332

Project Cost and Funding Sources

Estimated Cost: \$3,200,000

- AMLER (Non-Water Supply Project): \$3,200,000
- Regular AML Funding: \$0
- Regular AMD Funding: \$0
- Other Known Funding: \$0

State Game Lands 332

AML/AMD Measurables

- Two (2) acid mine drainage discharges with a combined flowrate of 200 gallons per minute will be passively treated
- A 5,800-foot Dangerous Highwall will be reclaimed
- A 54-acre Spoil Area will be mixed with a PA DEP-approved alkaline amendment and regraded

State Game Lands 332

AMLER Measurables

- 100 Acres of usable state game lands will be improved
- 2,500 feet of access road will be constructed for disabled sportspersons

State Game Lands 332

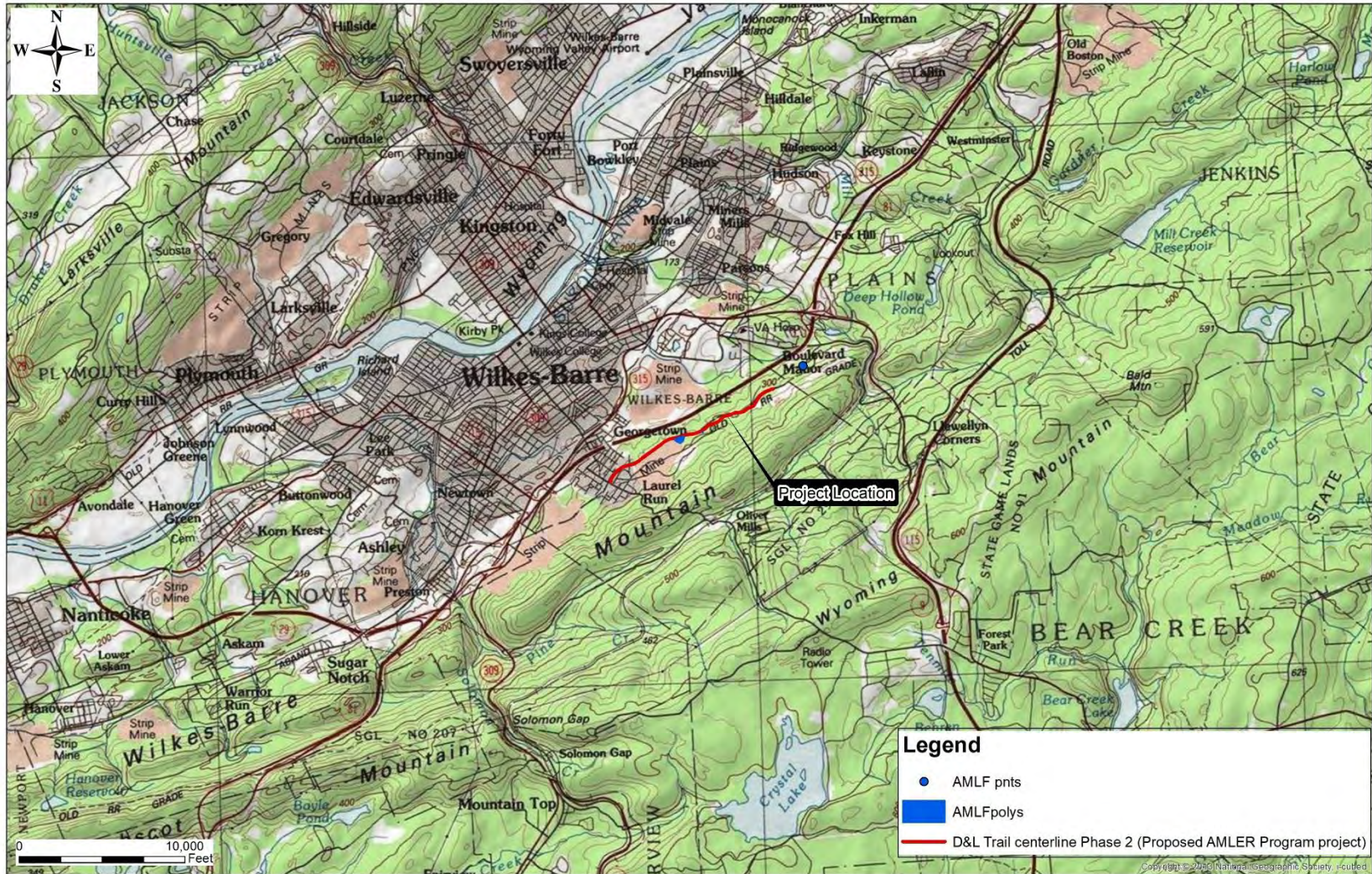
Project Partners

- Pennsylvania Game Commission (PGC)
- Aultman Watershed Association for Restoring the Environment (AWARE)
- Office of Surface Mining Reclamation and Enforcement
- Pennsylvania Department of Environmental Protection

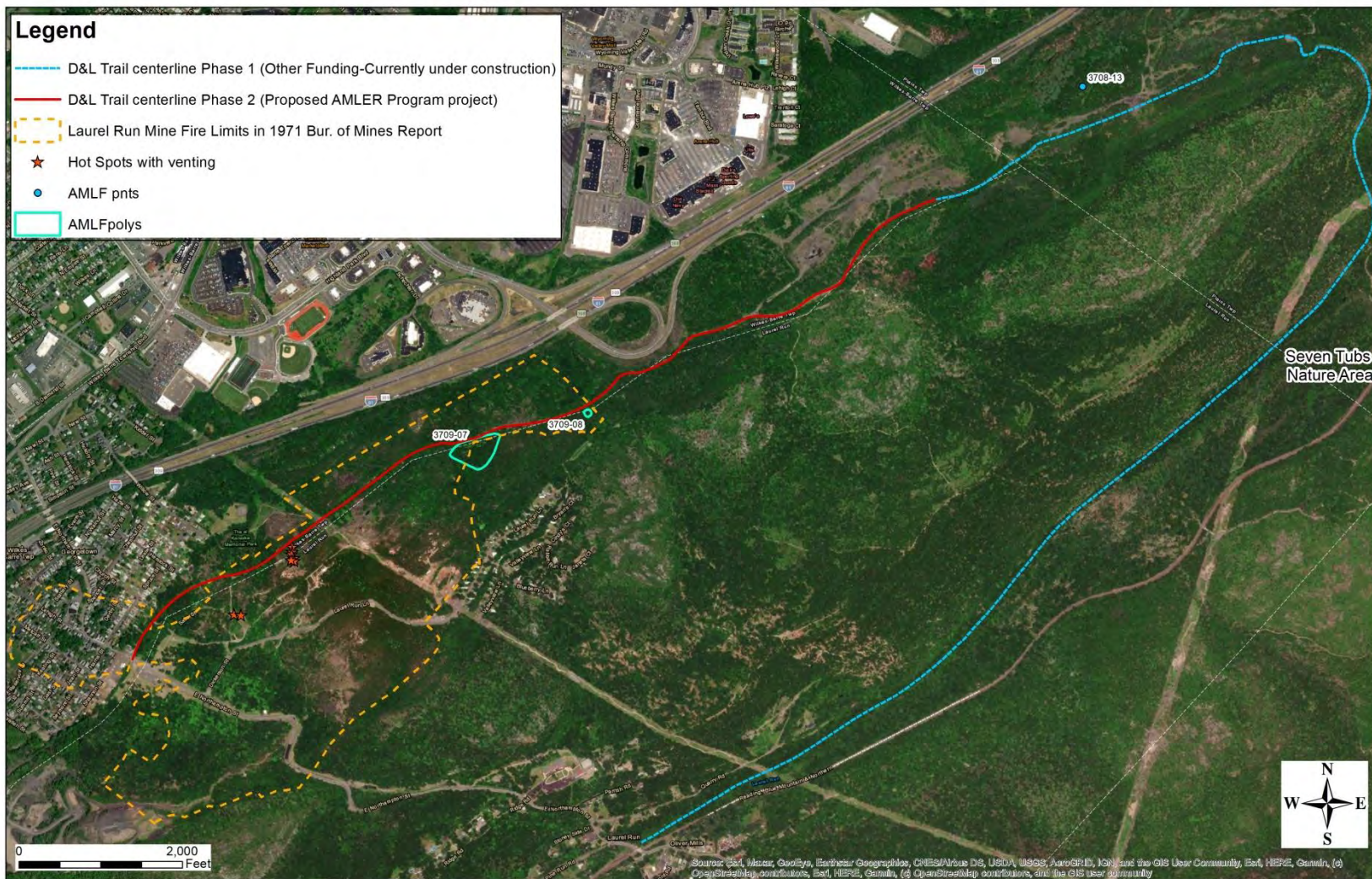
D&L Trail Wilkes-Barre Mountain-Phase 2

The D&L Trail Wilkes-Barre Mount – Phase 2 Project, a Category “A” AMLER Project, is located in Wilkes-Barre Township, Laurel Run Borough, and Plains Township, Luzerne County. The project will include the construction of a new 2.14-mile trail, reclamation of a nearby abandoned mine opening, and two dangerous highwalls (DHs) situated along the proposed trail will be backfilled. The proposed trail would run through the Pinchot State Forest along an abandoned railroad bed beginning where the existing Wilkes-Barre Mountain Section – Phase 1 trail ends which is about one mile from the PA Department of Conservation and Natural Resources’ Seven Tubs Recreation Area and will end near East Northampton Street, Wilkes-Barre. The trail will consist of 10-foot-wide crushed stone with 2-foot graded shoulders and will run adjacent to the Laurel Run Underground Mine Fire, but a detailed analysis shows the fire will have little to no effect on the trail. However, as a safety measure, fencing will be installed around areas of venting near the trail.

D&L Trail Wilkes-Barre Mountain-Phase 2



D&L Trail Wilkes-Barre Mountain-Phase 2



D&L Trail Wilkes-Barre Mountain-Phase 2



Photo 1: Typical existing conditions along the proposed Phase 2 trail alignment.

D&L Trail Wilkes-Barre Mountain-Phase 2



Photo 2: Typical existing conditions along the proposed Phase 2 trail alignment.

D&L Trail Wilkes-Barre Mountain-Phase 2



Photo 3: Abandoned mine opening where a bat-friendly gate will be installed.

D&L Trail Wilkes-Barre Mountain-Phase 2

Project Cost and Funding Sources

Estimated Project Cost: \$1,200,000

- AMLER (Non-Water Supply Project): \$941,000
- Regular AML Funding: \$259,000
- Regular AMD Funding: \$0
- Other Known Funding: \$0

D&L Trail Wilkes-Barre Mountain-Phase 2

AML/AMD Measurables

- Closure of one Mine Opening using a bat friendly gate
- Eliminate 650 feet of Dangerous Highwall
- Backfill 0.5 acres of Pits
- Grade 4.7 acres of Spoil Areas
- Install 1,200 feet of chain-link fence to prevent access to 1.5 acres of mine fire venting

D&L Trail Wilkes-Barre Mountain-Phase 2

AMLER Measurables

- 2.14-mile walking trail (a continuation of Phase 1 trail)

D&L Trail Wilkes-Barre Mountain-Phase 2

Project Partners

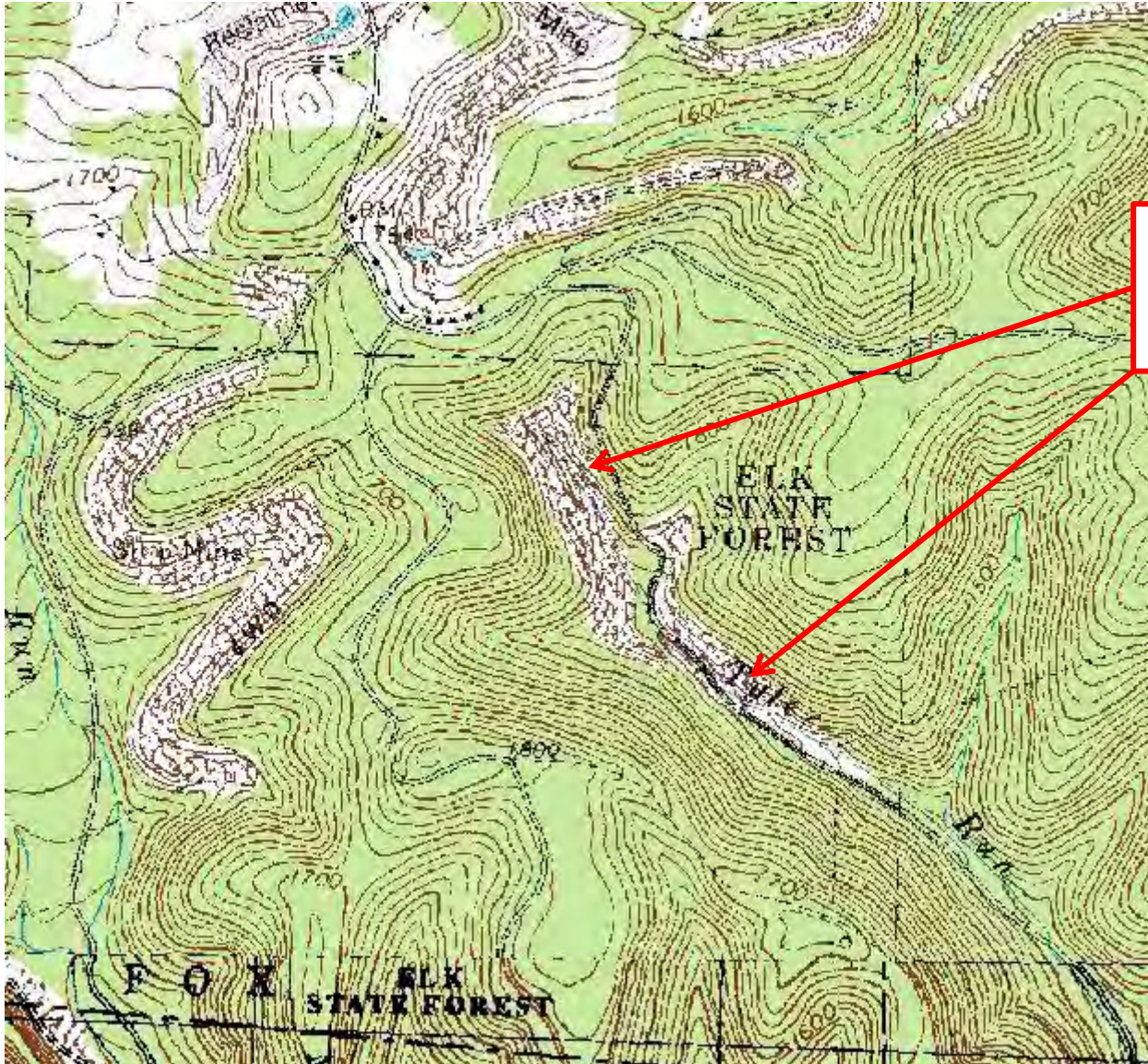
- North Branch Land Trust
- PA Department of Conservation and Natural Resources
- Office of Surface Mining Reclamation and Enforcement
- PA Department of Environmental Protection

Tyler Run

The Tyler Run Project, a Category “A” AMLER Project, is within the Moshannon State Forest and five Priority 2 Dangerous Highwalls (DH) at a combined length of 5,875 feet, including 16 acres of Priority 3 Spoil Area (SA), and a 0.3-acre Priority 3 strip mine pit (PI) will be reclaimed as a result of the Project. The SA will be used to backfill the associated DHs and PI.

The reclamation plan includes repurposing portions of the reclaimed areas to construct two (2) public parking areas within the project area which entice more visitors to this section of the Moshannon State Forest.

Tyler Run



OSM 24(0504)102.1
Tyler Run
Fox Township
Elk County

Tyler Run



Tyler Run



Tyler Run



Tyler Run



Tyler Run

Project Cost and Funding Sources

Estimated Project Cost: \$476,000

- AMLER (Non-Water Supply Project): \$476,000
- Regular AML Funding: \$0
- Regular AMD Funding: \$0
- Other Known Funding: \$0

Tyler Run

AML/AMD Measurables

- 5,875 feet of Dangerous Highwall
- 16 acres of Spoil Area
- 0.3 acres of Strip Mine Pit

Tyler Run

AMLER Measurables

- 2 permanent, gravel public parking lots with up to six parking spaces per lot

Tyler Run

Project Partners

- Office of Surface Mining Reclamation and Enforcement
- PA Department of Environmental Protection
- PA Department of Conservation and Natural Resources

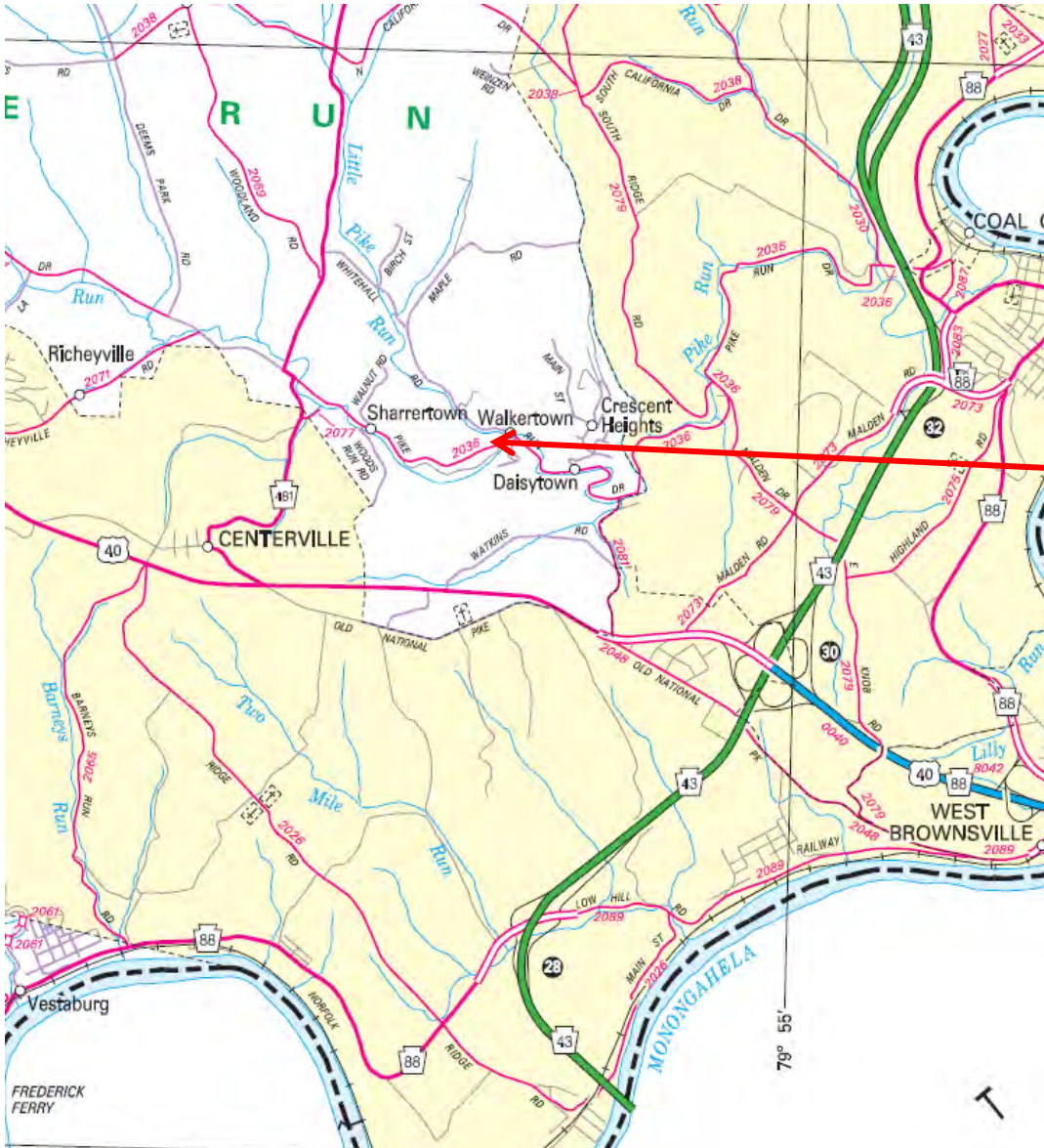
Walkertown

Seven acres of Dangerous Pile and Embankment (DPE) and a 0.2-mile Clogged Stream (CS) will be reclaimed as a result of the Walkerton Project, a Category “A” & “B” AMLER Project.

Refuse material will be pulled away from the stream to remove flooding issues and then regraded on site into a more stable configuration. A DEP-approved alkaline addition may be added during backfill to neutralize the soil acidity.

The reclamation plan includes creating a 3 to 4-acre greenspace and converting the site access road into a walking trail. The property owner intends to donate the greenspace to West Pike Run Township and Township will maintain the green space and the walking path. In the future, the township may continue to develop the greenspace by adding park benches, pavilions, or other facilities for the community to use for recreation.

Walkertown



OSM 63(4769)102.1
Walkertown
West Pike Run Township
Washington County

Walkertown



Walkertown



Walkertown



Walkertown

Project Cost and Funding Sources

Estimated Project Cost: \$1,550,000

- AMLER (Non-Water Supply Project): \$1,550,000
- Regular AML Funding: \$0
- Regular AMD Funding: \$0
- Other Known Funding: \$0

Walkertown

AML/AMD Measurables

- 7-acre Dangerous Pile and Embankment
- 0.2-mile Clogged Stream

Walkertown

AMLER Measurables

- 3 to 4-acre green space for community recreation
- 800-foot walking path

Walkertown

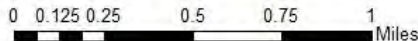
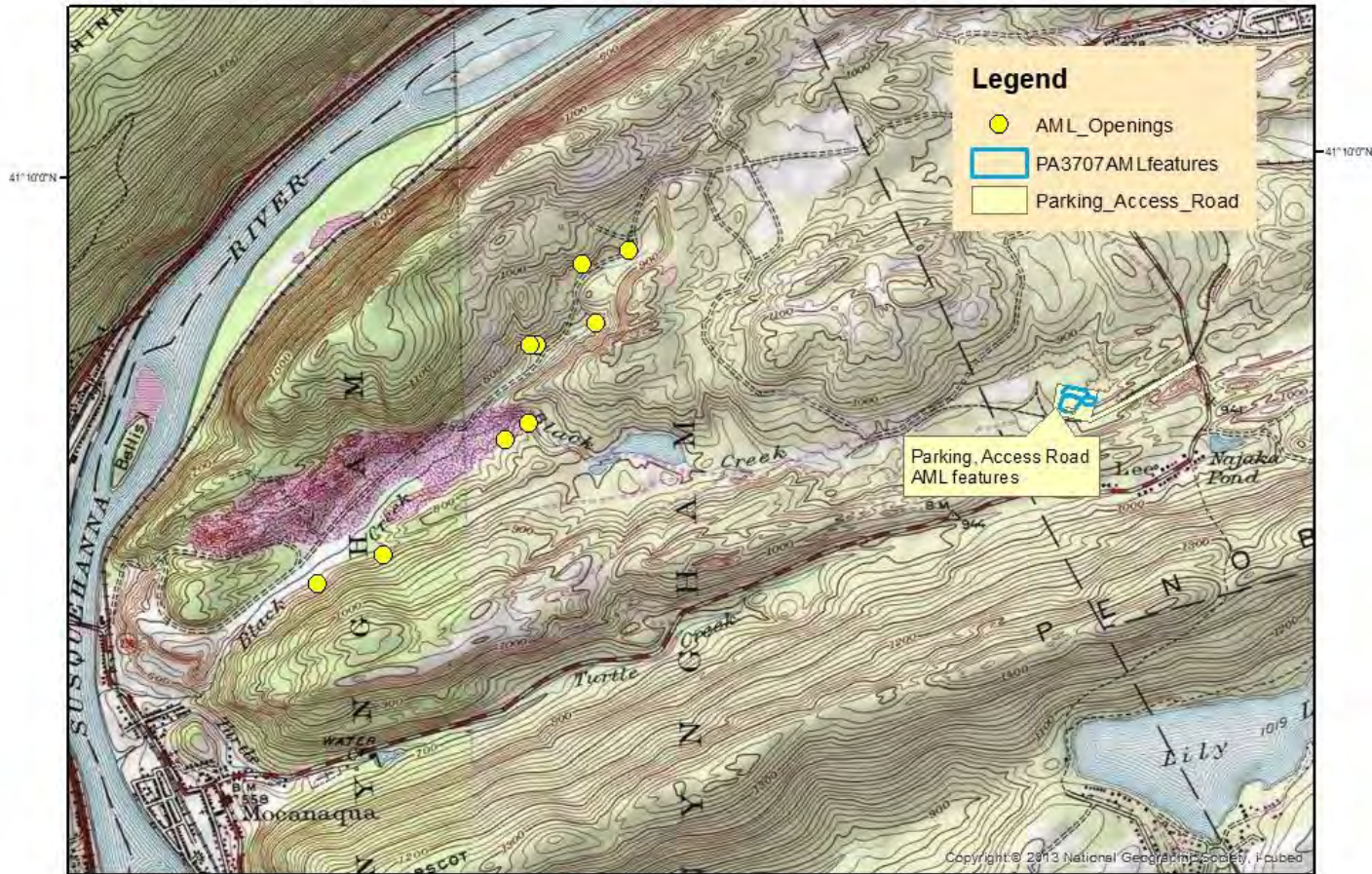
Project Partners

- West Pike Run Township
- Property owner of the AML site
- Office of Surface Mining Reclamation and Enforcement
- PA Department of Environmental Protection

Mocanaqua AML Recreation Access

The Mocanaqua AML Recreation Access Project, a Category “A” AMLER Project, is on PA DCNR’s Pinchot State Forest, PA Game Lands 224 and Earth Conservancy property. Project work includes the reclamation of several abandoned mine land (AML) features including a Dangerous Highwall (DH), Spoil Area (SA), Pits (PI), Industrial/Residential Waste, and Mine Openings. In addition to reclaiming the AML features, an existing access road, measuring 2,400-foot-long, will be improved, a parking area will be constructed to accommodate at least 30 cars, and signage at the parking lot will be installed. The Project will also include site security measures and visitor amenities at the parking area.

Mocanaqua AML Recreation Access

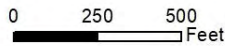


Mocanaqua AML - Recreation Access
OSM40(7101,2157,3707)101.1
Conyngam Twp., Luzerne County, PA

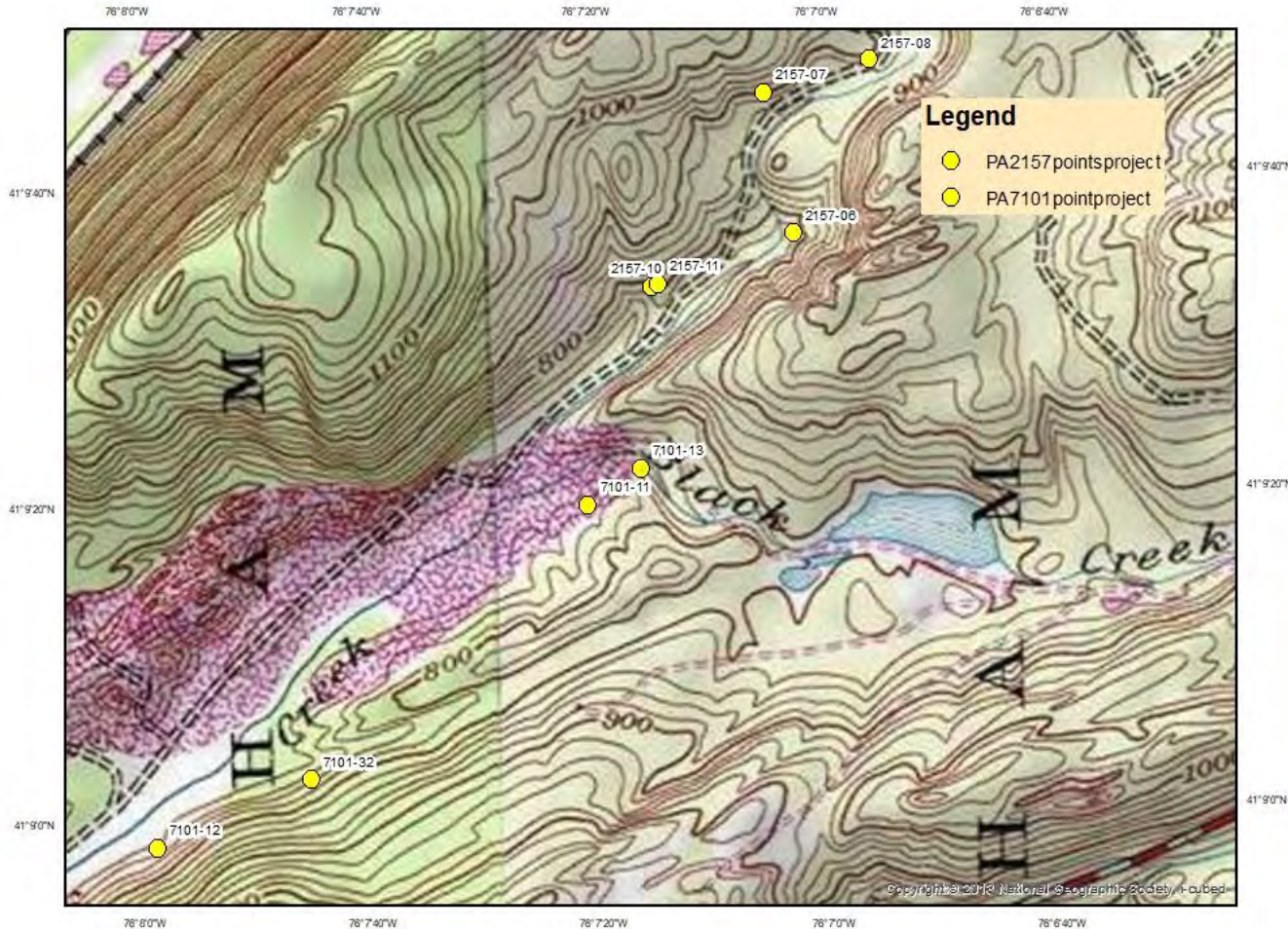
Mocanaqua AML Recreation Access



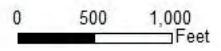
Mocanaqua AML Recreation Access
OSM40(7101,2157,3707)101.1
Newport Twp, Luzerne County, PA



Mocanaqua AML Recreation Access



Mocanaqua AML - Recreation Access
OSM40(7101,2157,3707)101.1
Conyngham Twp., Luzerne County, PA



Mocanaqua AML Recreation Access



Feature 7101-12 Mine Opening

Mocanaqua AML Recreation Access



Feature 7101-11 Mine Drift

Mocanaqua AML Recreation Access



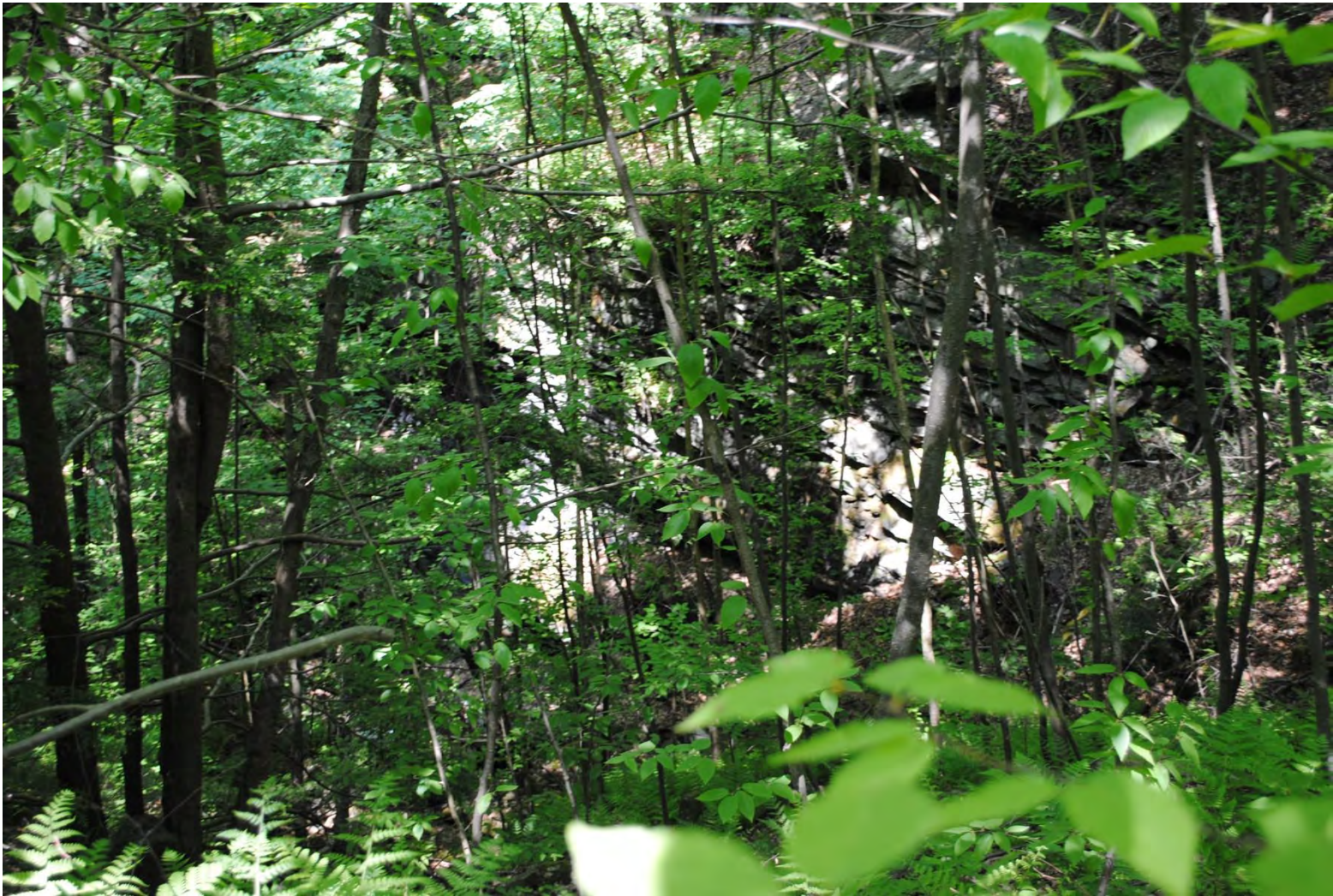
Feature 7101-32 Mine Opening

Mocanaqua AML Recreation Access



Feature 2157-06 Mine Opening

Mocanaqua AML Recreation Access



Feature 3707-05 Dangerous Highwall

Mocanaqua AML Recreation Access

Project Cost and Funding Sources

Estimated Project Cost: \$850,000

- AMLER (Non-Water Supply Project): \$850,000
- Regular AML Funding: \$0
- Regular AMD Funding: \$0
- Other Known Funding: \$0

Mocanaqua AML Recreation Access

AML/AMD Measurables

- 10 Mine Openings
- 165 feet Dangerous Highwall
- 1.4 acres of Pits
- 0.1-acre Industrial/Residential Waste
- 1.0-acre Spoil Area

Mocanaqua AML Recreation Access

AMLER Measurables

- 2,400 feet of access road improvements
- Parking lot for 30 cars
- Site security measures
- Visitor amenities

Mocanaqua AML Recreation Access

Project Partners

- PA Department of Conservation and Natural Resources
- PA Game Commission
- Earth Conservancy
- Office of Surface Mining Reclamation and Enforcement
- PA Department of Environmental Protection

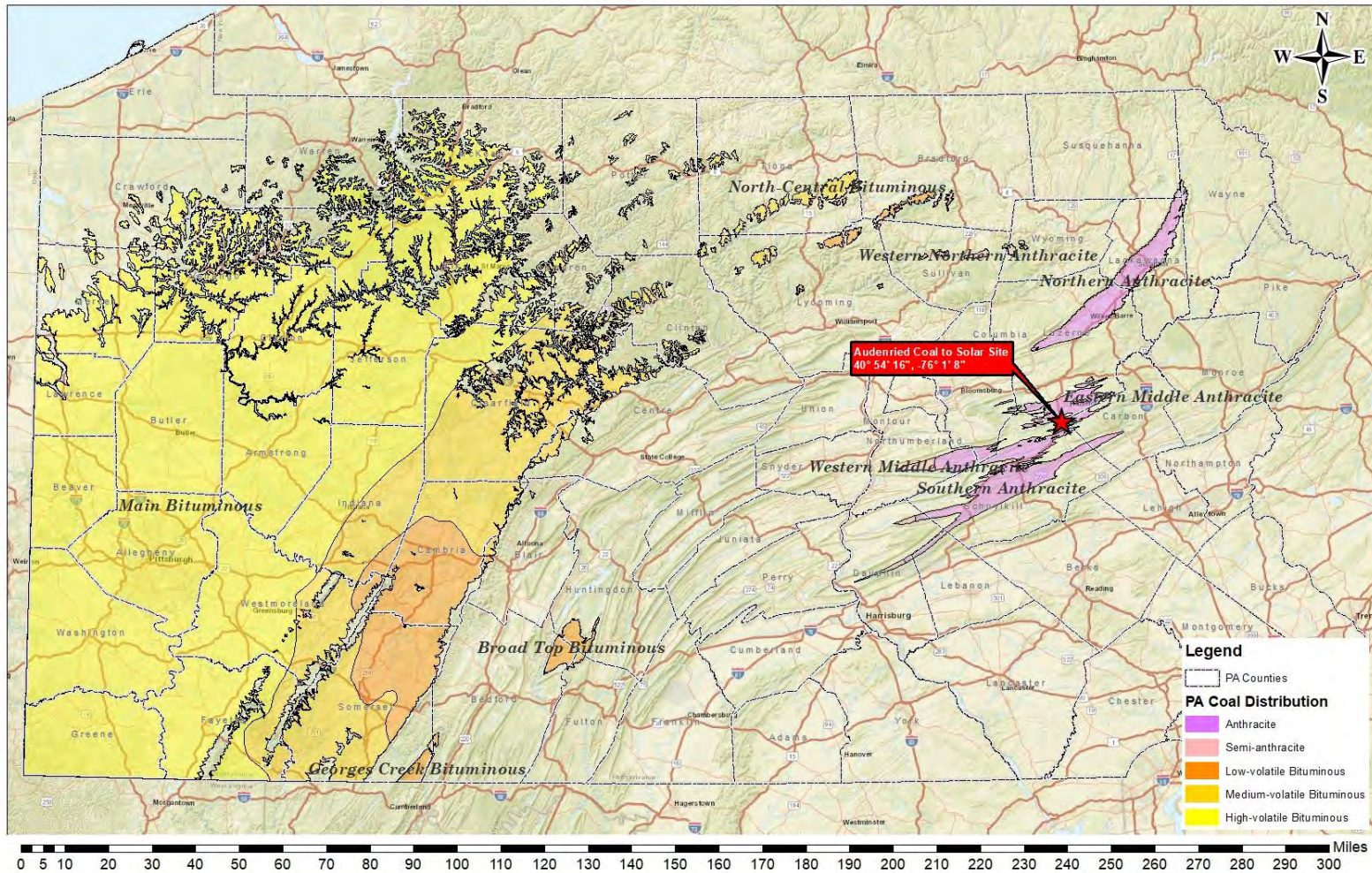
Audenried Coal to Solar-Phase 1

The Audenried Coal to Solar - Phase 1 Project, a Category “B” AMLER Project, is part of a two-phase project proposed by Teichos Energy, LLC to reclaim 146 acres of abandoned mine lands (AML) and to accommodate construction of a utility scale solar photovoltaic facility.

This phase of the Project will include reclamation of eight acres of Dangerous Piles and Embankments (DPE), the removal of one Hazardous Equipment and Facility (HEF), backfilling multiple abandoned strip Pits (PI), and grading approximately 1.9 million cubic yards of mine Spoil Area (SA) material.

As a result of the Project, it is anticipated that 150-300 full-time jobs directly related to the solar construction and 6-8 permanent jobs related to facility operations and maintenance of the solar panels will be created.

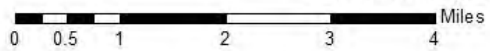
Audenried Coal to Solar-Phase 1



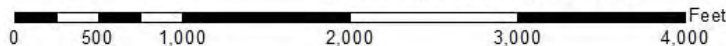
Audenried Coal to Solar-Phase 1



OSM 40, 54(1385,3723,3722)101.1 - Audenried Coal to Solar
Hazle Township, Luzerne County
Kline Township, Schuylkill County



Audenried Coal to Solar-Phase 1



pennsylvania
DEPARTMENT OF ENVIRONMENTAL
PROTECTION

Audenried Coal to Solar-Phase 1



Dangerous Pile and Embankment and Spoil Area will be graded and used to backfill adjacent PI so the site can accommodate the installation of solar panels.

Audenried Coal to Solar-Phase 1



This Hazardous Equipment and Facility AML feature, known as the welding shop, is located within the Project Area and will be removed under the reclamation project.

Audenried Coal to Solar-Phase 1



Abandoned PI that will be backfilled and graded to accommodate the future installation of solar panels.

Audenried Coal to Solar-Phase 1

Project Cost and Funding Sources

Estimated Project Cost: \$6,200,000

- AMLER (Non-Water Supply Project): \$3,950,000
- Regular AML Funding: \$2,250,000
- Regular AMD Funding: \$0
- Other Known Funding: \$0

Audenried Coal to Solar-Phase 1

AML/AMD Measurables

- Reclaim 146 acres of AML that include approximately, eight acres of Priority 2 Dangerous Pile and Embankment, one Priority 2 Hazardous Equipment and Facility and 100 acres of Priority 3 Spoil Area and Pits.

Audenried Coal to Solar-Phase 1

AMLER Measurables

- 30.50 megawatts of solar panels will be installed by Teichos Energy, LLC following Phase 1 of the Project
- 150-300 fulltime equivalent jobs directly related to solar construction
- 6-8 permanent jobs related to facility operations and maintenance of the solar panels

Audenried Coal to Solar-Phase 1

Project Partners

- Teichos Energy, LLC
- Property owner of the AML site
- Office of Surface Mining Reclamation and Enforcement
- PA Department of Environmental Protection

Audenried Coal to Solar-Phase 1

Future Phase 2 (currently in Planning)

Phase 2 of the project will approximately 166 acres of AML and will include the removal of one abandoned Hazardous Equipment and Facility (HEF), grading the mine spoil area (SA), and backfilling an abandoned strip pit.

The restoration of Hunky Dory Creek (a tributary to Catawissa Creek in the Susquehanna River Basin) is also proposed under Phase 2. A new creek channel will be established, and Hunky Dory Creek will be reconnected with Catawissa Creek as it was pre-mining.

Following Phase 2 of the Project, Teichos Energy will install additional solar panels on the reclaimed AML.

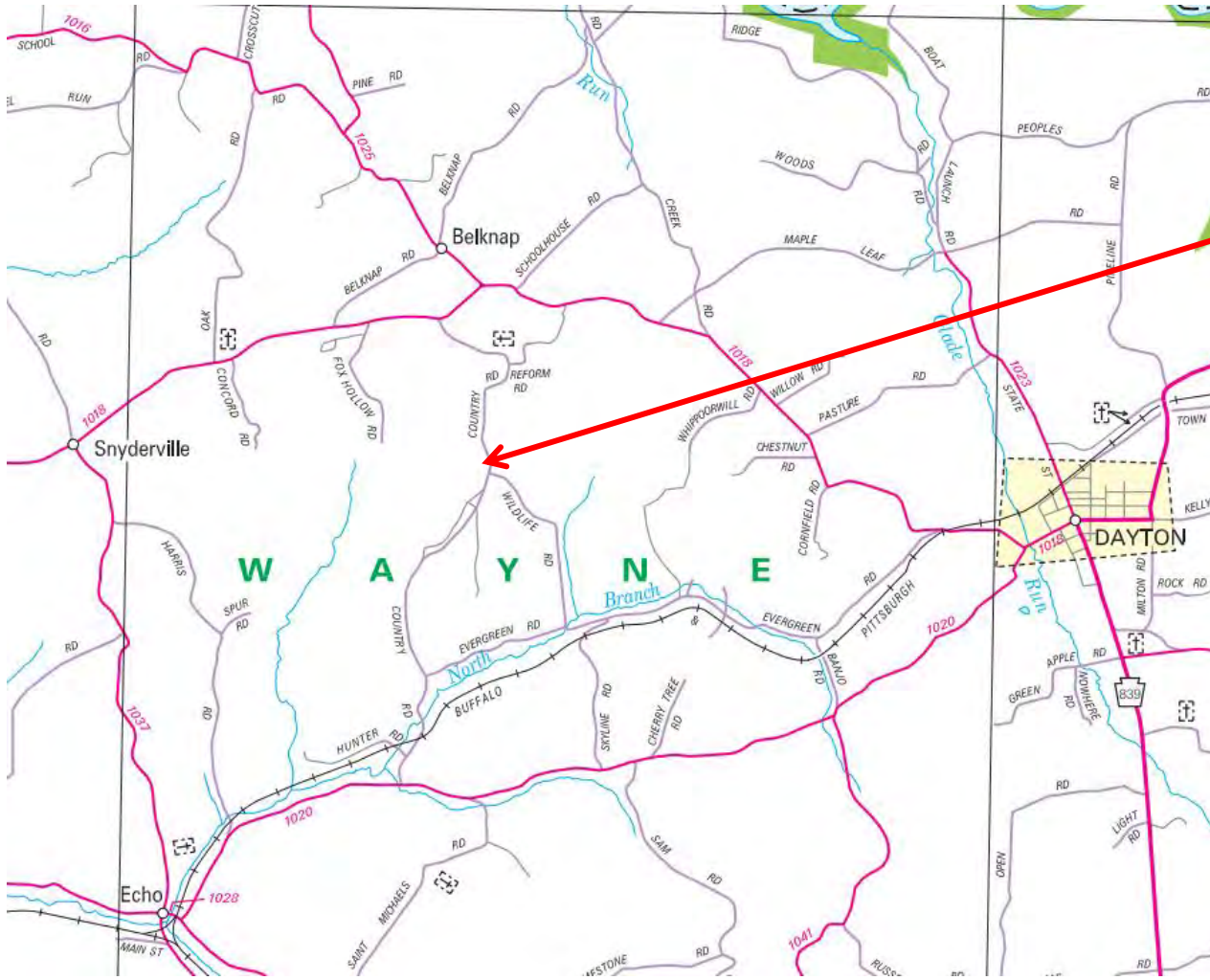
Belnap South

As a result of the Belnap South Project, a Category “A” AMLER Project, 1,700 feet of Dangerous Highwall (DH) and twenty acres of Spoil Area (SA) will be reclaimed. The SA will be used to backfill the DH and provide grading conducive to farming. A DEP-approved additional may be added to neutralize soil acidity.

Reclamation of the Project site will increase hay production on this property by approximately 42%, which will provide increased local feed for cattle. The increase in hay production for the very rural area, with limited access to grocery stores, will keep local beef prices down.

Agriculture is the main component of the area’s employment and local agricultural equipment suppliers will also see the benefits of increased farmland.

Belnap South



Project Location

Belnap South



Project Area

Belnap South

Belnap South



Belnap South



Belnap South



Belnap South

Project Cost and Funding Sources

Estimated Project Cost: \$350,000

- AMLER (Non-Water Supply Project): \$350,000
- Regular AML Funding: \$0
- Regular AMD Funding: \$0
- Other Known Funding: \$0

Belnap South

AML/AMD Measurables

- 1,700 feet of Dangerous Highwall
- 20 acres of Spoil Area

Belnap South

AMLER Measurables

- Increase hay production by 42%
- Increase local feed for beef cattle
- Decrease local beef prices for area consumers

Belnap South

Project Partners

- Property owner farming the property adjacent to the AML site.
- Office of Surface Mining Reclamation and Enforcement
- PA Department of Environmental Protection

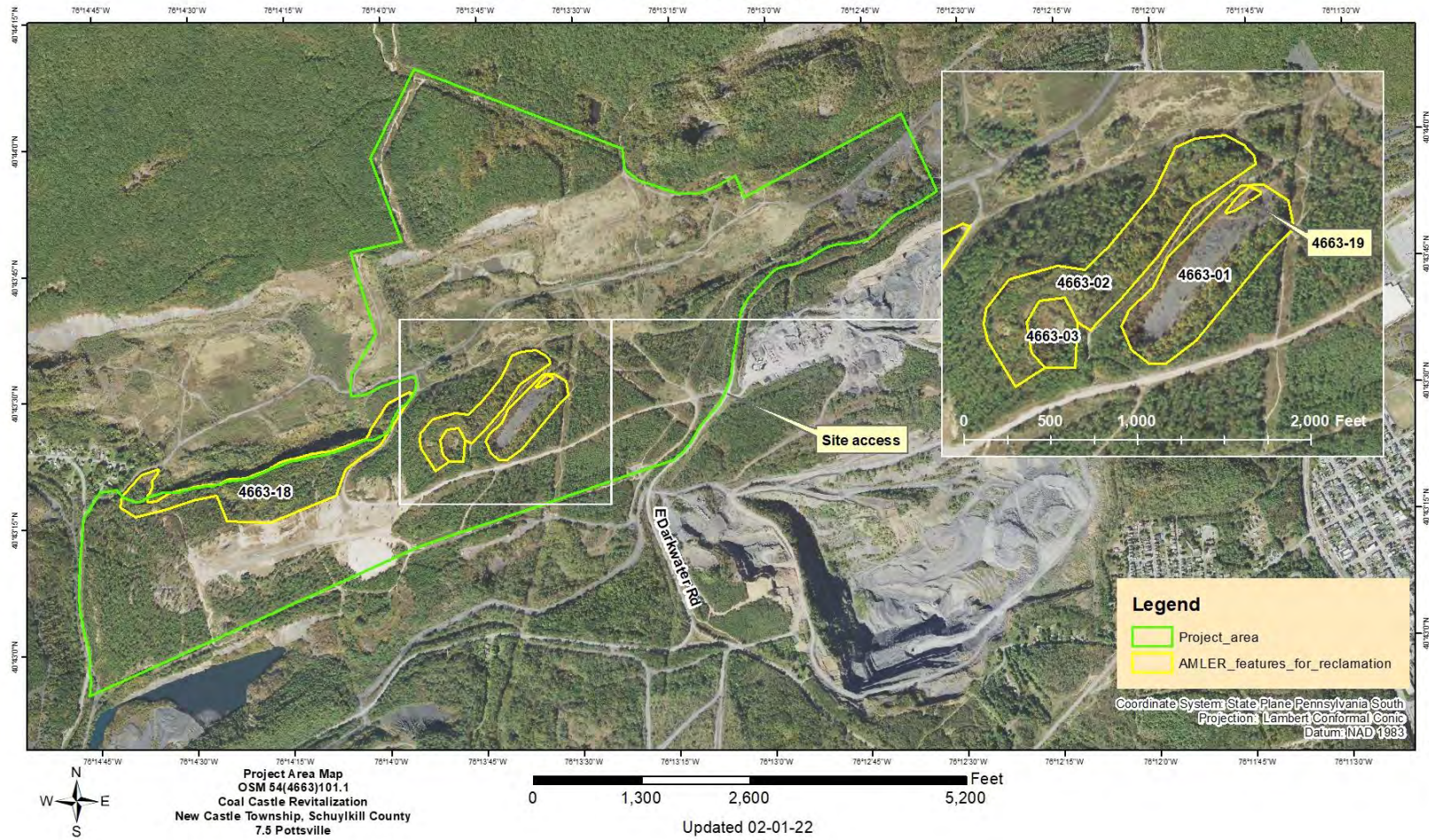
Coal Castle Revitalization

The Coal Castle Revitalization Project, a Category “A” and “B” AMLER Project, proposed by Famous Reading Outdoors, LLC, will reclaim 56 acres of abandoned mine land (AML). The project will facilitate future commercial development that will support the extreme off-road riding experience the site has to offer. A Dangerous Pile & Embankment (DPE), Hazardous Water Body (HWB), Strip Pits (PI) and Spoil Area (SA) will be reclaimed as a result of the Project. Nearly 690,000 cubic yards of on-site material will be regraded as part of the Project. An estimated 10-20 full and part time jobs will be created, not including temporary construction positions during reclamation.

This outdoor recreation area already holds events periodically attracting hundreds to thousands of patrons. Additional development of the property would encourage larger crowds to stay in New Castle Township for longer periods.

Coal Castle Revitalization

Coal Castle Revitalization OSM 54(4663)101.1



Coal Castle Revitalization

Photo 1: Entrance to location from Darkwater Road.



Coal Castle Revitalization

Looking Northeast with features 4663-01 (DPE), 4663-19 (H/WB), 4663-02 (SA), and 4663-03 (PI)

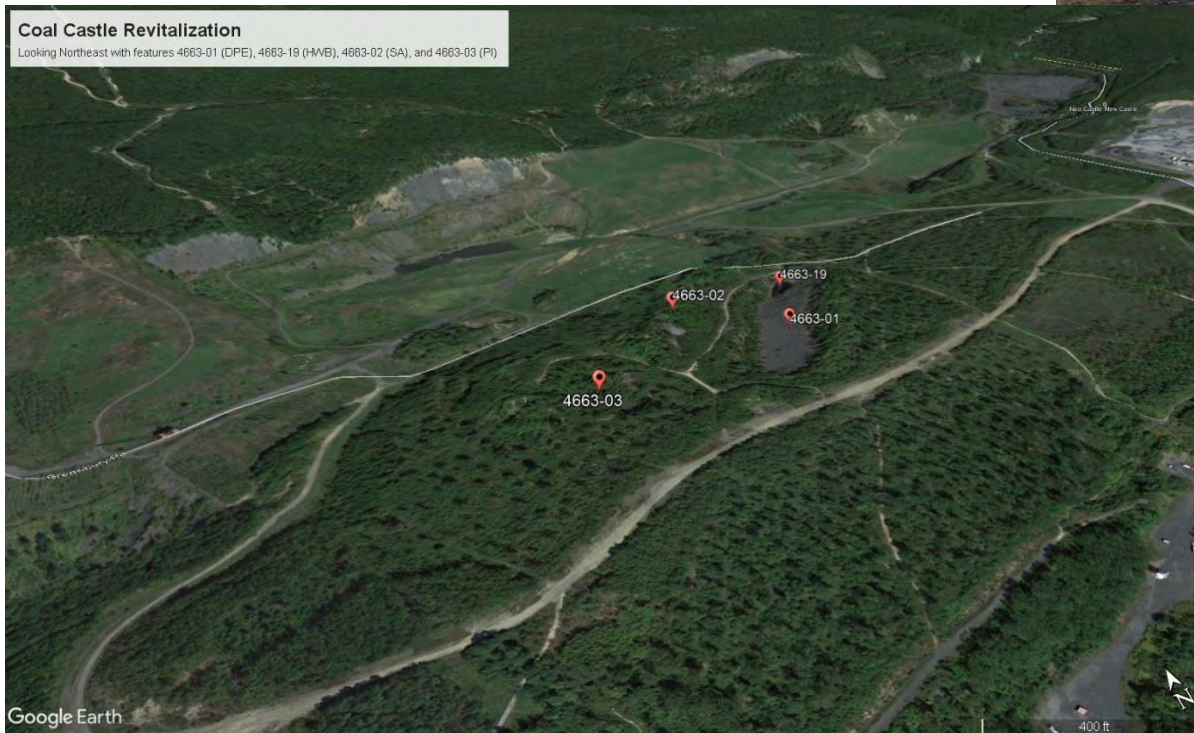


Photo 2: Aerial view from Google Earth showing the P1 Dangerous Pile & Embankment, P1 Hazardous Water Body, P3 Spoil Area, and P3 Pit.

Coal Castle Revitalization

Photo 4, right: 4663-03, Pit, looking South.



Photo 3, below: 4663-02, Spoil Area, looking North.



Coal Castle Revitalization

Photo 5, right: 4663-01, DPE, looking Northeast.



Photo 6, left: 4663-19, HWB, looking Northeast. Water body is a 0.3-acre impoundment. 4663-01, DPE, can be accessed by ATV trail in the upper left corner of the photo.

Coal Castle Revitalization

Project Cost and Funding Sources

Estimated Project Cost: \$2,250,000

- AMLER (Non-Water Supply Project): \$1,500,000
- Regular AML Funding: \$750,000
- Regular AMD Funding: \$0
- Other Known Funding: \$0

Coal Castle Revitalization

AML/AMD Measurables

- 11 acres of Priority 1 Dangerous Pile & Embankment
- 0.3-acre Priority 1 Hazardous Water Body
- 43 acres of Priority 3 Spoil Area
- 2 acres of Priority 3 Pits
- 56 total acres of AML will be reclaimed
- Project Area encompasses 641 acres

Coal Castle Revitalization

AMLER Measurables

- 56 acres of reclaimed land suitable for future building
- Estimated 10-20 full and part time jobs will be created

Coal Castle Revitalization

Project Partners

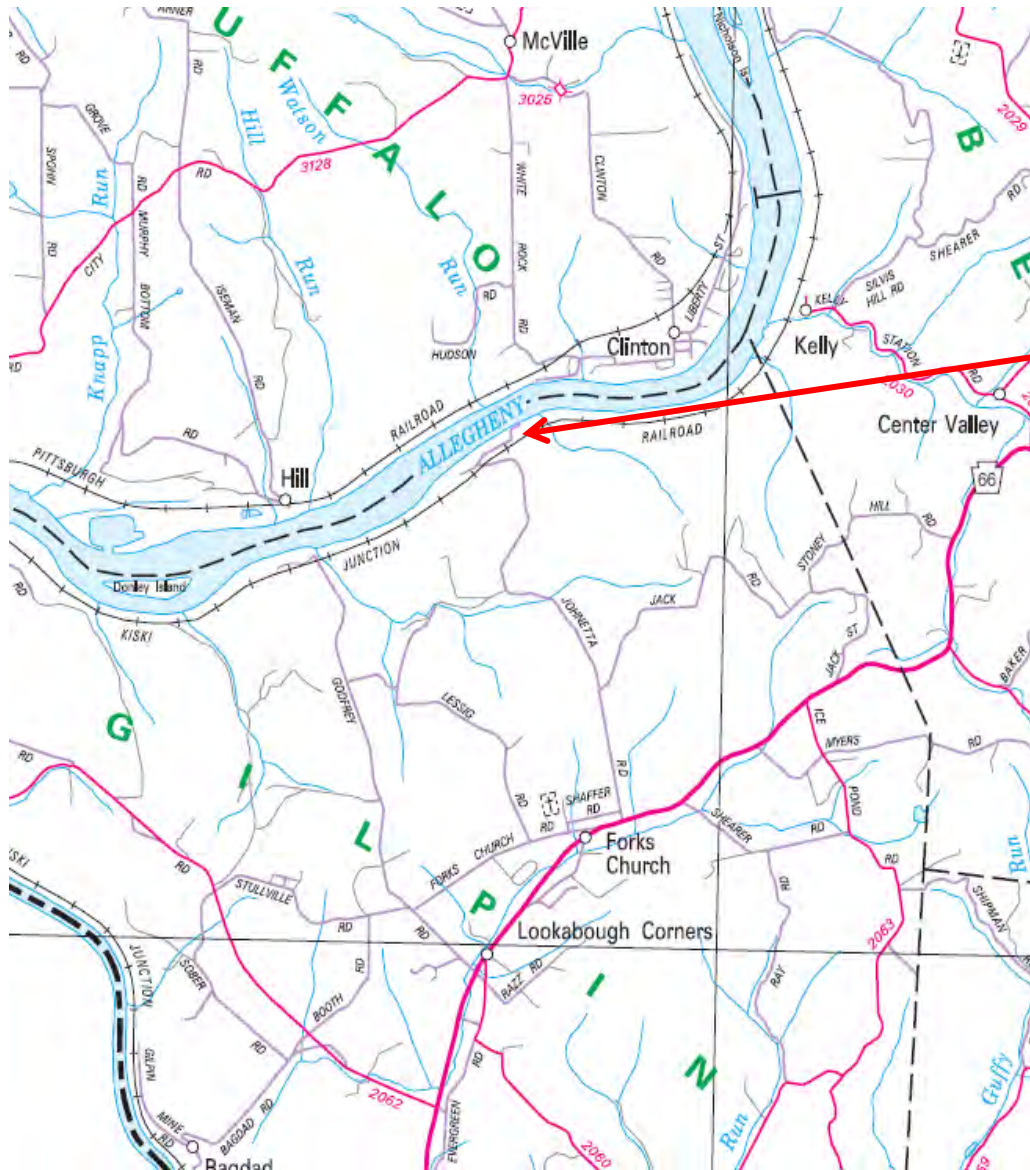
- Famous Reading Outdoors
- Property owner of the AML site
- New Castle Township
- Schuylkill Headwaters Association
- Office of Surface Mining Reclamation and Enforcement
- PA Department of Environmental Protection

Forks Church North

The Project Area is within an existing campground and located along the Allegheny River. Once completed, two (2) Dangerous Highwalls (DH), five acres of Spoil Area (SA), one (1) Dangerous Pile and Embankment (DPE), and two (2) Hazardous Equipment and Facilities (HEF) will be reclaimed. The SA will be used to backfill the DH, and the DPE will be graded on site to a more stable configuration. A DEP-approved alkaline addition may be added to neutralize soil acidity. The HEFs will be deconstructed onsite and buried as clean fill.

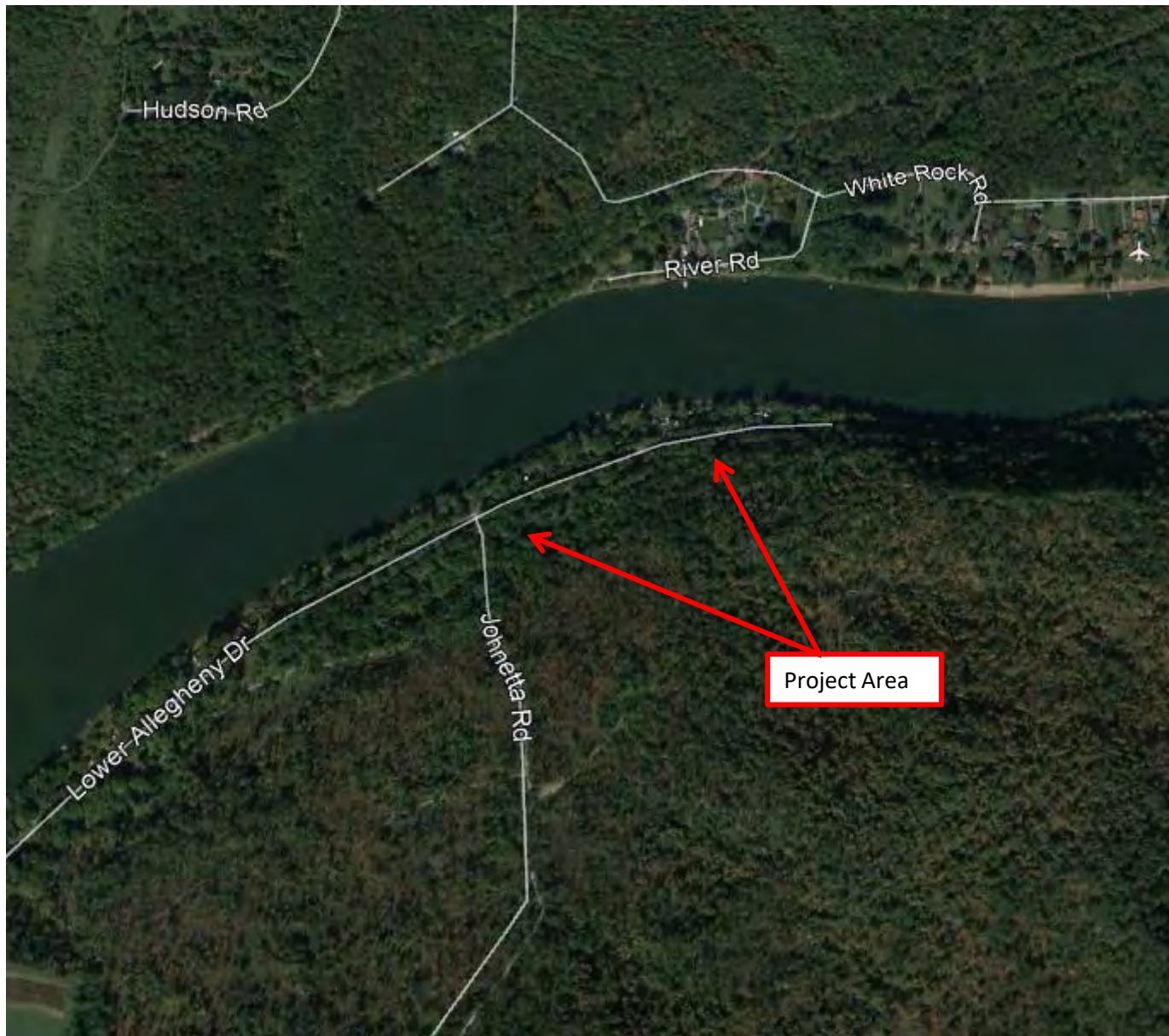
The reclamation plan of this Category “A” and “B” AMLER Project, includes grading a large green space to be used by the campground for recreational purposes and grading additional level areas throughout the campground for future campsites.

Forks Church North



OSM 03(4902)102.1
Forks Church North
Gilpin Township
Armstrong County

Forks Church North



Forks Church North



Forks Church North



Forks Church North



Forks Church North

Project Cost and Funding Sources

Estimated Project Cost: \$920,000

- AMLER (Non-Water Supply Project): \$420,000
- Regular AML Funding: \$500,000
- Regular AMD Funding: \$0
- Other Known Funding: \$0

Forks Church North

AML/AMD Measurables

- 180-foot Dangerous Highwall
- 5 acres Spoil Area
- 2 acres Dangerous Pile and Embankment
- 2 Hazardous Equipment and Facilities
 - 25 coke ovens
 - three partially standing brick structures
 - building remnants

Forks Church North

AMLER Measurables

- Large green space constructed for recreational purposes
- Grade level areas throughout the campground for future campsites

Forks Church North

Project Partners

- Property owner of the AML site and owner of the campground
- Office of Surface Mining Reclamation and Enforcement
- PA Department of Environmental Protection

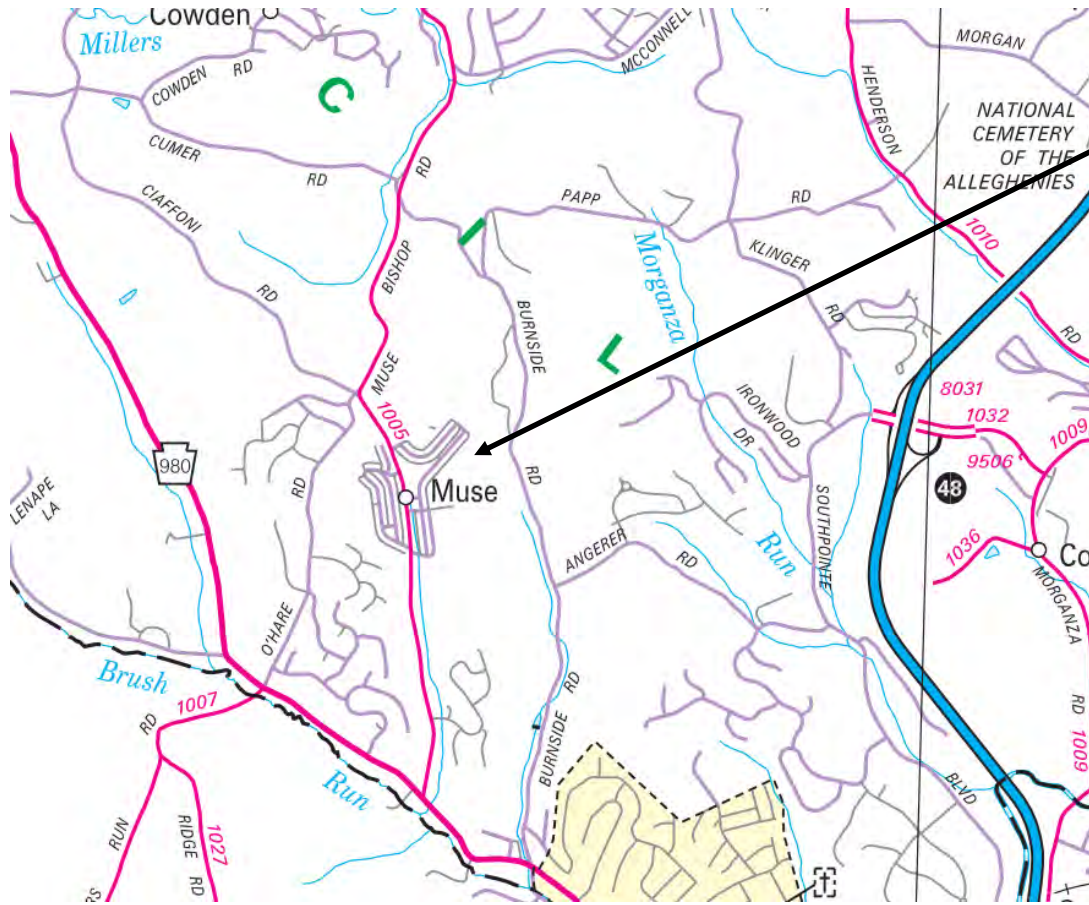
Muse

The Muse Project is a Category “A” AMLER Program Project with potential to be a Category “B” AMLER Program Project.

A 5-acre Dangerous Pile and Embankment (DPE) will be graded on site to eliminate the health and safety hazards and a DEP-approved alkaline amendment will be added to neutralize acidity and re-establish vegetation. Five Hazardous Equipment and Facilities (HEF) within the Project Area will be demolished and buried onsite and a five-acre area will be graded to suit the property owner’s plans to develop a storage facility business. Additionally, an access road will be constructed for emergency and municipal crews.

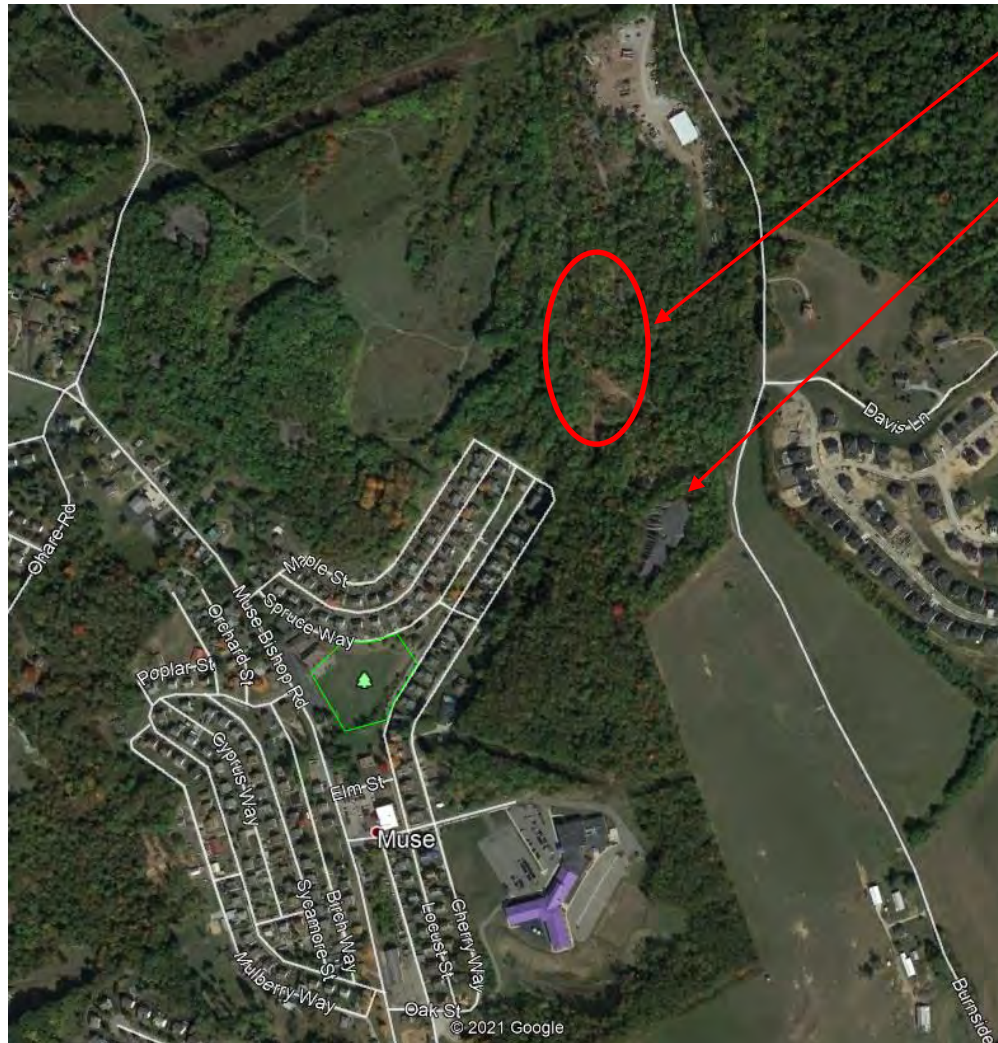
A storage facility business will provide a significant economic benefit to the area which is heavily populated by large housing developments.

Muse



Project site

Muse



HEFs

DPE

Muse



Muse



Muse



Project Cost and Funding Sources

Estimated Project Cost:

- AMLER (Non-Water Supply Project): \$1,291,530
- Regular AML Funding: \$0
- Regular AMD Funding: \$0
- Other Known Funding: \$0

AML/AMD Measurables

- Five-acre Dangerous Pile and Embankment
- (5) Hazardous Equipment Facilities

AMLER Measurables

- Five acres of area will be graded for a storage business
- Allows for the development of Phase 2 which will develop multiple new businesses and jobs in the community as well as a 3,700-foot multi-use access road/trail

Muse

Project Partners

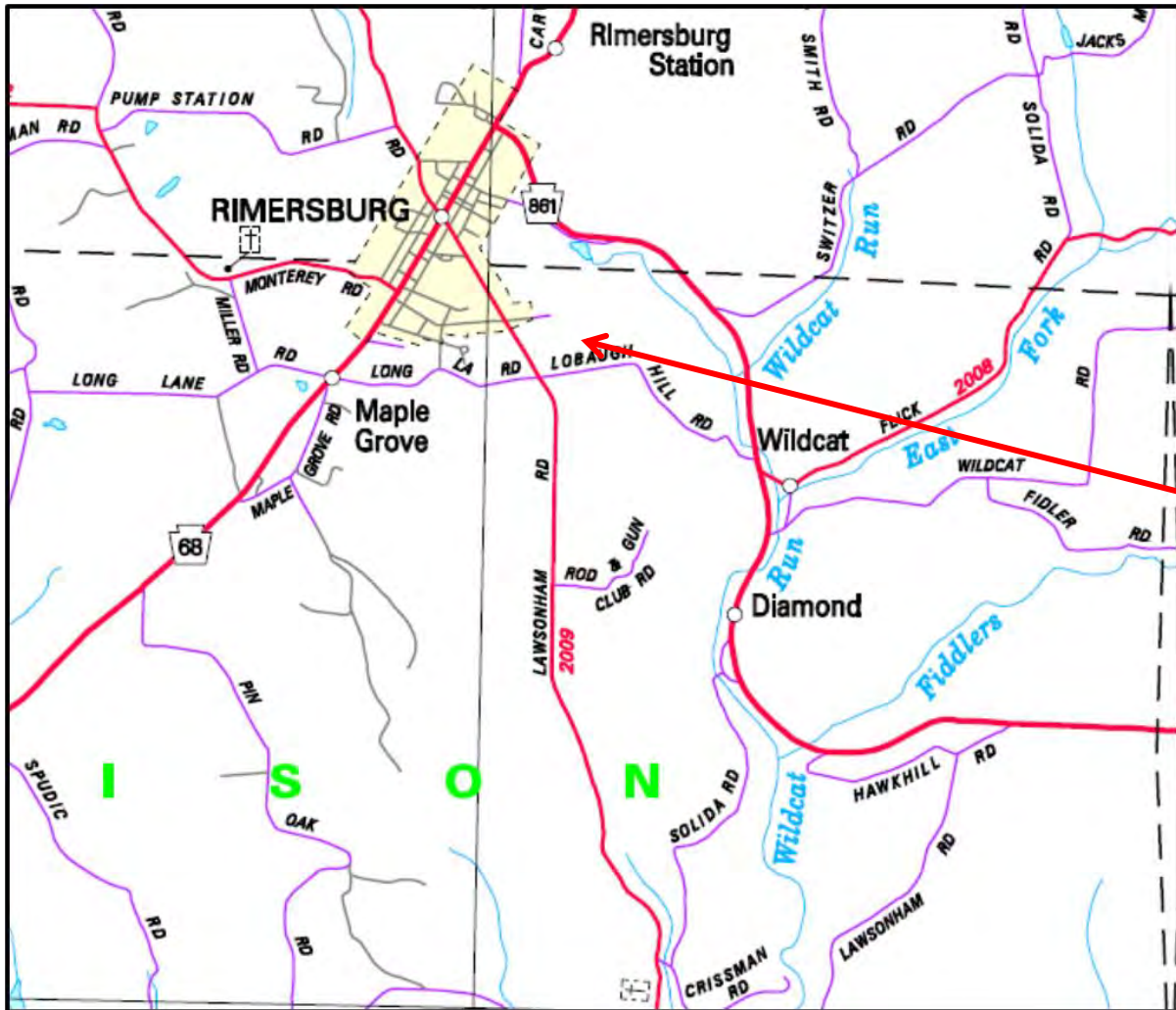
- Property owner of the AML site
- Office of Surface Mining Reclamation and Enforcement
- PA Department of Environmental Protection

Wildcat Run

A Priority 2, 2,500-foot Dangerous Highwall (DH) and 19 acres of associated Priority 3 Spoil Area (SA) will be reclaimed as a result of the Wildcat Run Project, a Category “A” AMLER Program Project. A seven-acre Priority 2 Dangerous Pile and Embankment (DEP) will be graded onsite and a DEP-approved alkaline material will be added during reclamation to neutralize soil acidity.

Improvements to the Project Area include, regrading and paving an existing gravel parking lot to be compliant with the Americans with Disabilities Act Accessibility Guidelines, constructing a large green space, with amenities, for outdoor recreational purposes, and adding amenities along the trail for use by visitors.

Wildcat Run



OSM 16(0410)101.1
Wildcat Run
Madison Township
Clarion County

Wildcat Run



Wildcat Run



Wildcat Run



Wildcat Run



Wildcat Run



Wildcat Run

Project Cost and Funding Sources

Estimated Project Cost: \$571,000

- AMLER (Non-Water Supply Project): \$571,000
- Regular AML Funding: \$0
- Regular AMD Funding: \$0
- Other Known Funding: \$0

Wildcat Run

AML/AMD Measurables

- Dangerous Highwall - 70 feet high by 2,500 feet long
- Spoil Area - 15 acres
- Dangerous Pile and Embankment – 3.5 acres

Wildcat Run

AMLER Measurables

- Regrading and paving an existing gravel parking lot to be compliant with the Americans with Disabilities Act Accessibility Guidelines and adding amenities on the trail for use by visitors.
- Increase the recreational activities along the trail as well as business and tourism in Rimersburg, located 3,000 feet from the trail.
- Construct a large green space, with amenities, for outdoor recreational purposes.

Wildcat Run

Project Partners

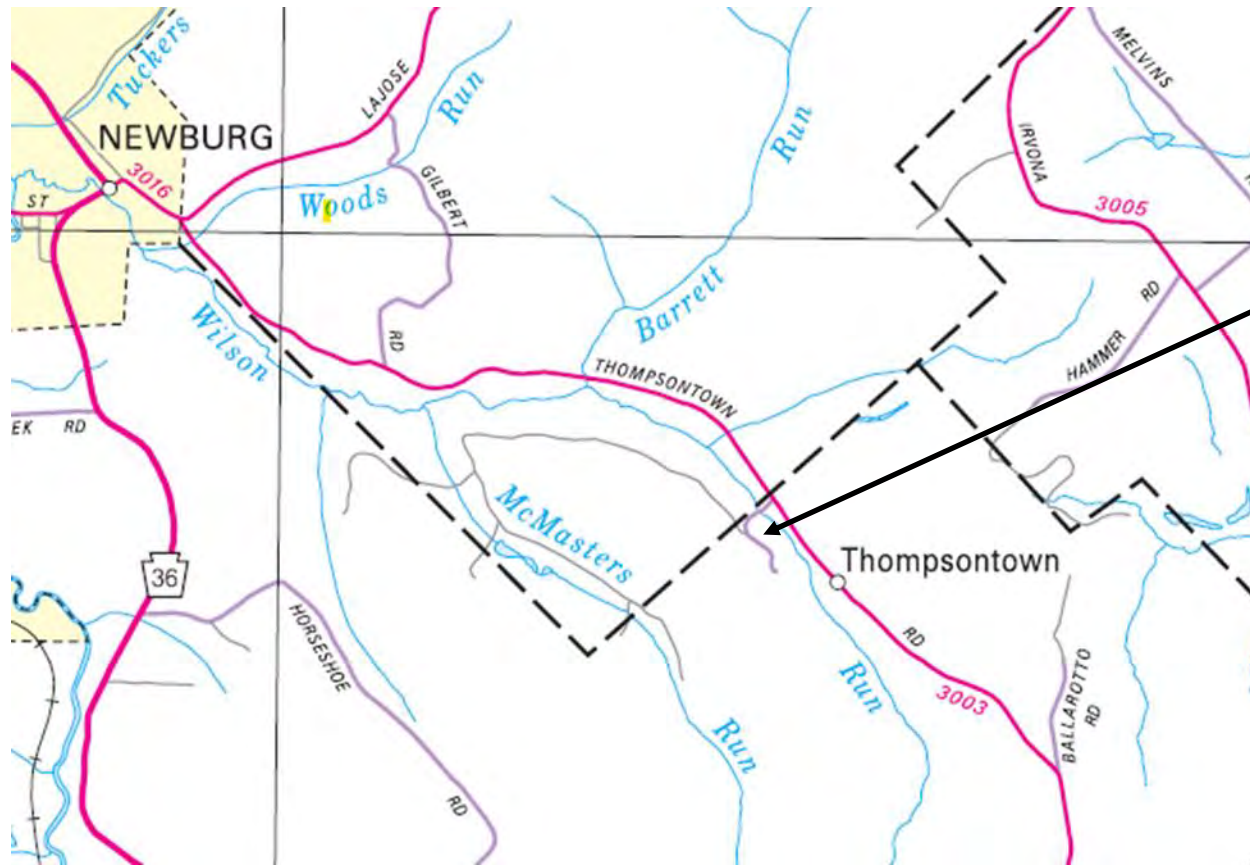
- Office of Surface Mining Reclamation and Enforcement
- PA Department of Environmental Protection
- Redbank Valley Trails Association

Thompsonsontown

The Thompsonsontown Project is a Category “A” and “B” AMLER Program Project located in Chest Township, Clearfield County. A dangerous pile and embankment (DPE), situated adjacent to Wilson Run, measuring ten acres and containing approximately 240,000 tons of coal refuse with steep, unstable slopes will be reclaimed as a result of the Project. The Thompsonsontown Cooperative Trout Nursery is located immediately downstream of the DPE pile and after rainstorms the stream often overflows its banks depositing sediment into the raceways of the nursery, killing the fish.

The proposed scope of work involves removing roughly half of the coal refuse and hauling it to a waste coal burning plant and the remaining refuse will be regraded to more stable slopes and revegetated. A portion of the alkaline fly ash by-product of burning the coal refuse will be hauled back to the site and mixed with the remaining refuse to neutralize the acidic soil to promote revegetation. By removing the DPE, the trout nursery will experience fewer fish kills related to sediment pollution significantly increasing the number of trout available for local youth fishing events.

Thompsonsontown



Project site

Thompsonsontown



Trout Nursery

DPE

Thompsons town



Thompsons town



Thompsons town



Thompsonsontown

Project Cost and Funding Sources

Estimated Project Cost:

- AMLER (Non-Water Supply Project): \$1,000,000
- Regular AML Funding: \$0
- Regular AMD Funding: \$0
- Other Known Funding: \$0

Thompsonsontown

AML/AMD Measurables

- 10-acre Dangerous Pile and Embankment

Thompsonsontown

AMLER Measurables

- Reduction in fish kills
- 30% increase in trout stocked per year
- Increase in local youth fishing opportunities

Thompsonsontown

Project Partners

- Thompsonsontown Cooperative Trout Nursery
- Property owner of the AML site
- Office of Surface Mining Reclamation and Enforcement
- PA Department of Environmental Protection



For more information about the AMLER
Program in Pennsylvania, visit:

dep.pa.gov/AML-Pilot

Tom Wolf, Governor

Patrick McDonnell, Secretary