



PFBC's Role in Reclassifying Streams

Mark Hartle, Chief
Division of Environmental Services
(814) 359-5133
mhartle@pa.gov

Issues before AAB

- What is the process used in identifying and reclassifying streams?
- What is the process used in picking streams to assess and reclassify?
- How do PFBC and DEP interact with each other in use if these classifications?

Process to Identify and Reclassify Streams

- PFBC routine surveys for fishery management purposes
- Targeted surveys to determine the nature of an unknown resource in a potential project area
- Unassessed Waters Initiative



Pennsylvania's Unassessed Waters Initiative

- To date, approximately 53,000 waters in Pennsylvania have not been surveyed
- Most are small first and second order streams
- Proper classification through biological surveys is necessary to accurately reflect the aquatic communities that reside in these streams
- Permitted activities consider accurate resource risks



Unassessed Waters Initiative

A photograph of a forest stream with people conducting a field study. The stream flows over mossy rocks in a dense, green forest. Several people are visible: one in a blue shirt and backpack is on the left, another in a white shirt and dark pants is in the center, and a third person is partially visible behind them. The scene is lush with green foliage and trees.

Goal:

Proactively identify and properly classify the most at-risk streams which support naturally reproducing trout populations in order to protect, conserve and enhance those waters as wild trout streams.

Strategic Trout Plan

Priority Issue #1

“The PFBC has not assessed all of the streams throughout the Commonwealth. As a result, the total number of streams that support wild trout populations in Pennsylvania is unknown, which leads to inadequate protection for these streams. The PFBC does not currently have the ability to assess the most at-risk streams at a rate that would outpace the rate of degradation.”

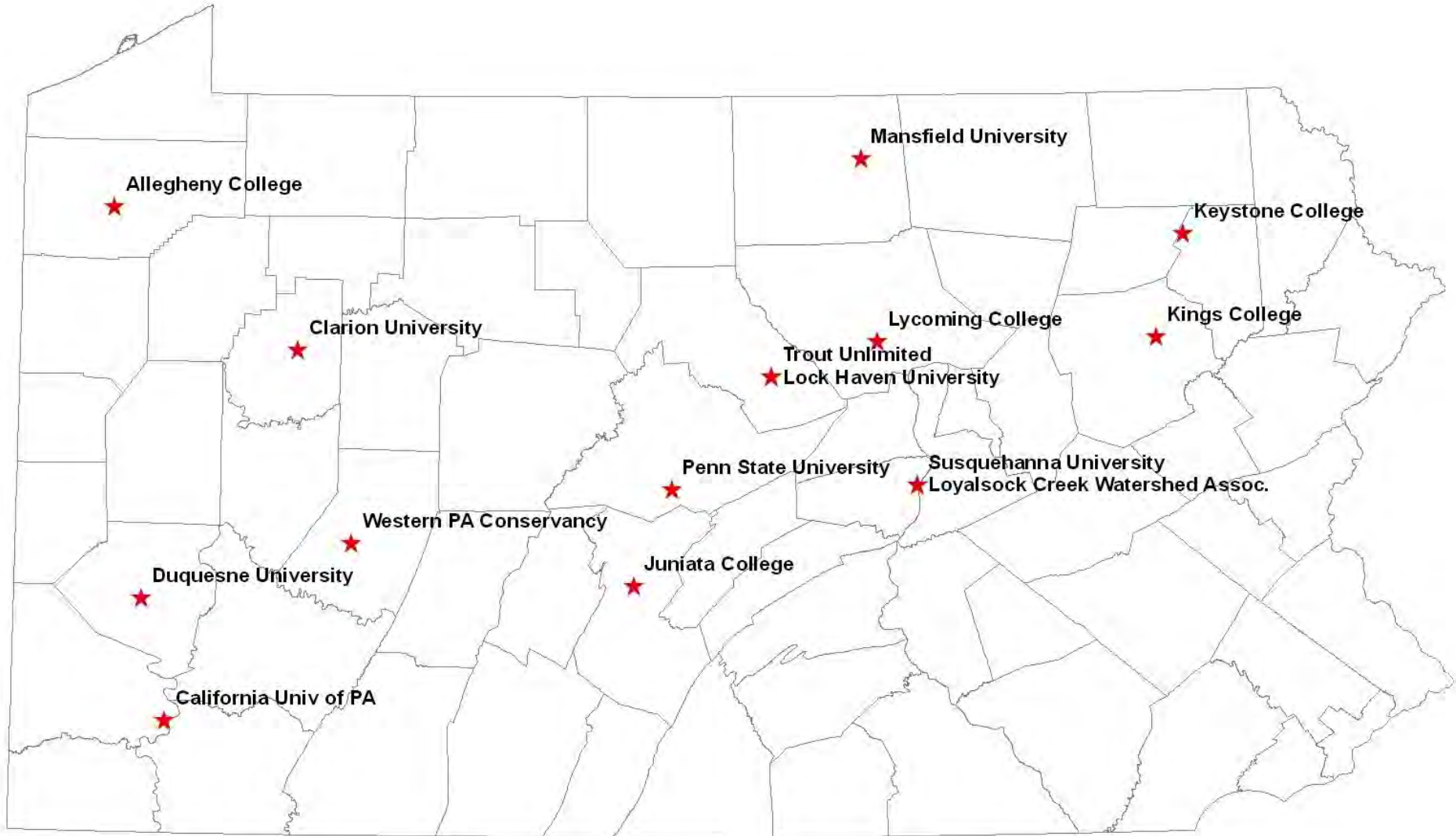


Unassessed Waters Initiative 2010 to Present

- PFBC Bureau of Fisheries – Develops list each year of waters to be sampled by staff and cooperators. Staff conduct surveys in field season.
- Cooperators - Developed and implemented pilot program with two colleges. Expanded to nine partners in 2011, fifteen in 2013. Varies between 12 – 15 partners annually.



Unassessed Waters Initiative – Partners



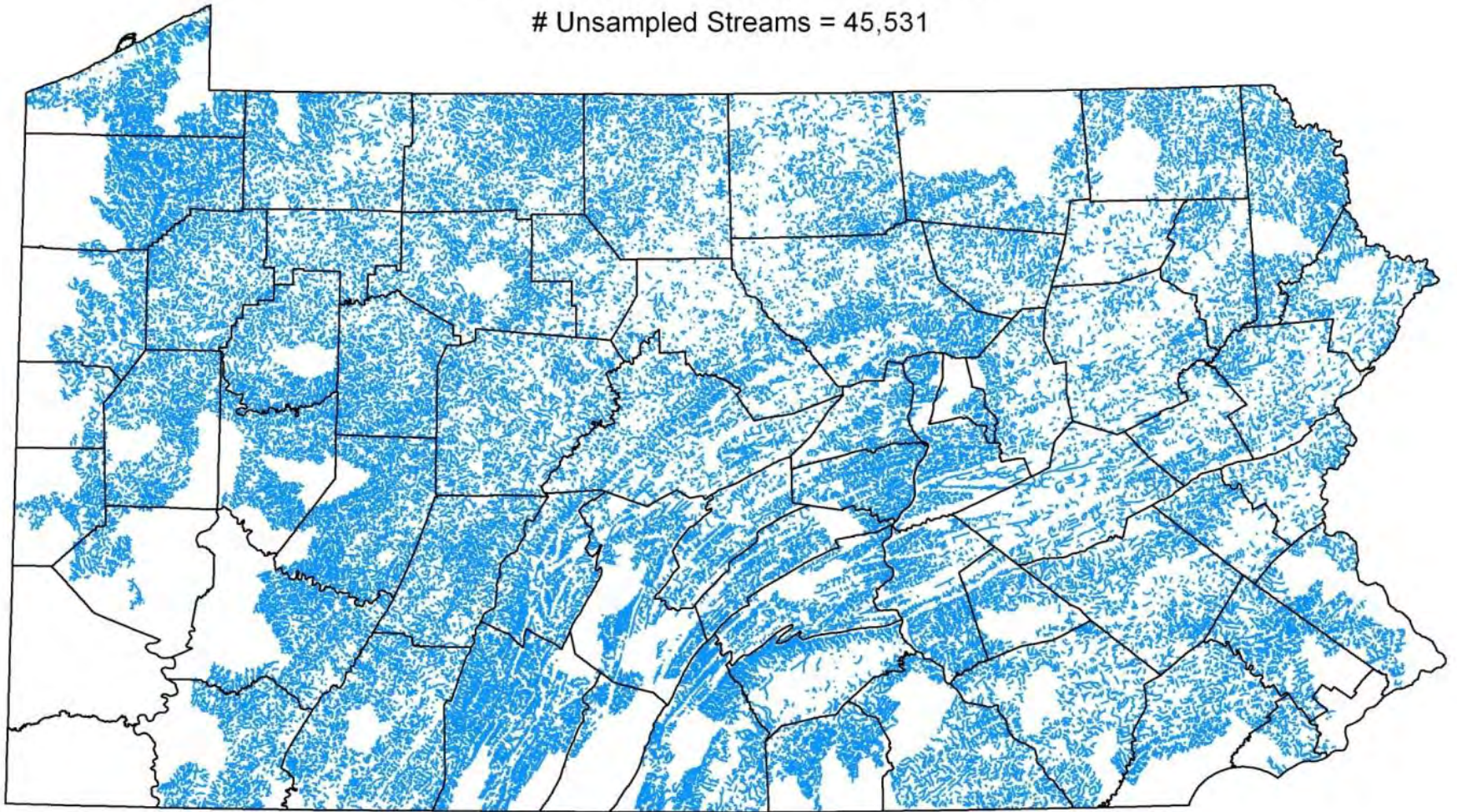
Picking Streams to Assess

- Develop a means to involve interested partners in identifying wild trout populations in unassessed waters.
- Use GIS technology to identify potential wild trout streams (watersheds) most at risk.
- Develop prioritized lists of unassessed streams.



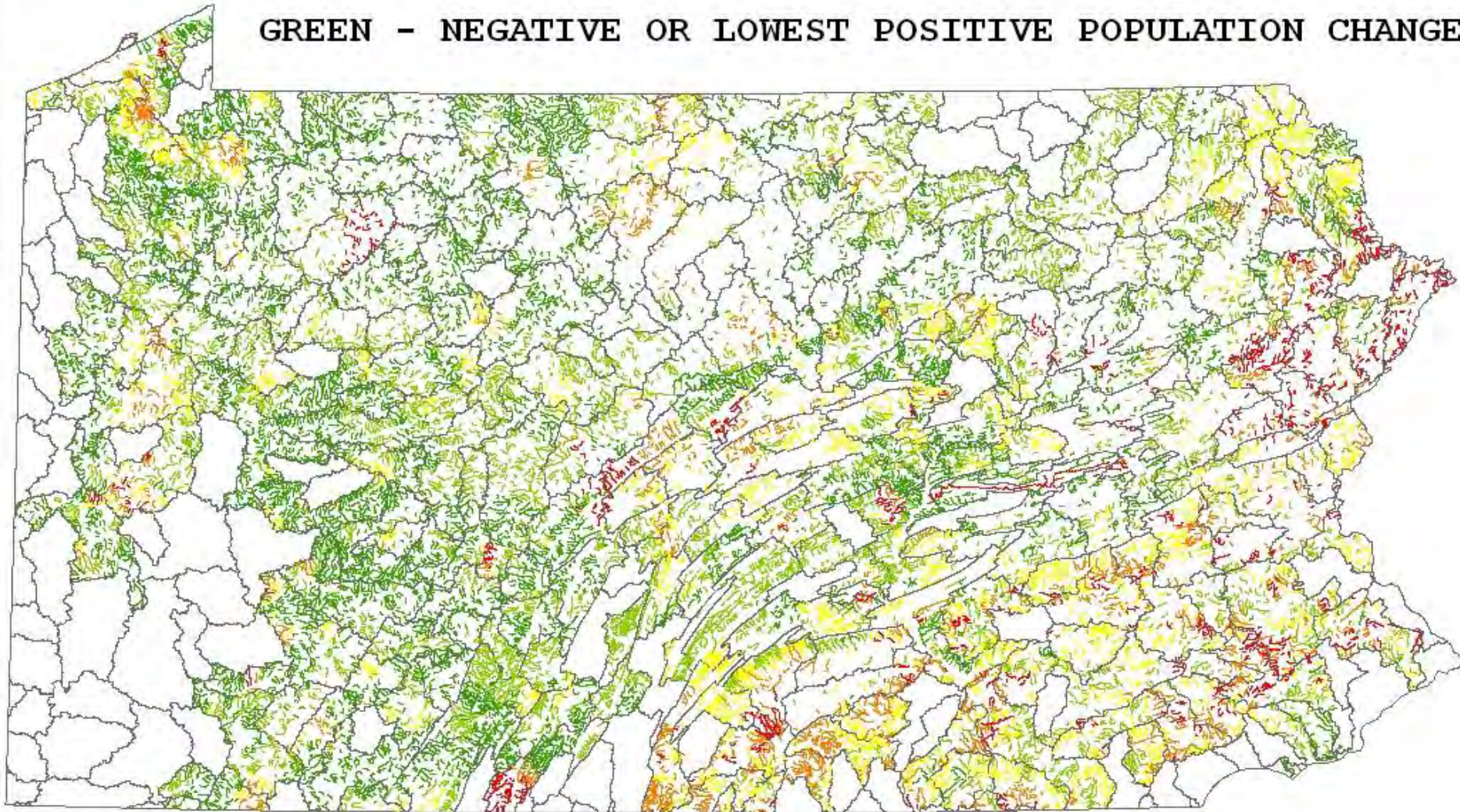
Unsamed Streams Within Watersheds With Wild Trout

Unsamed Streams = 45,531

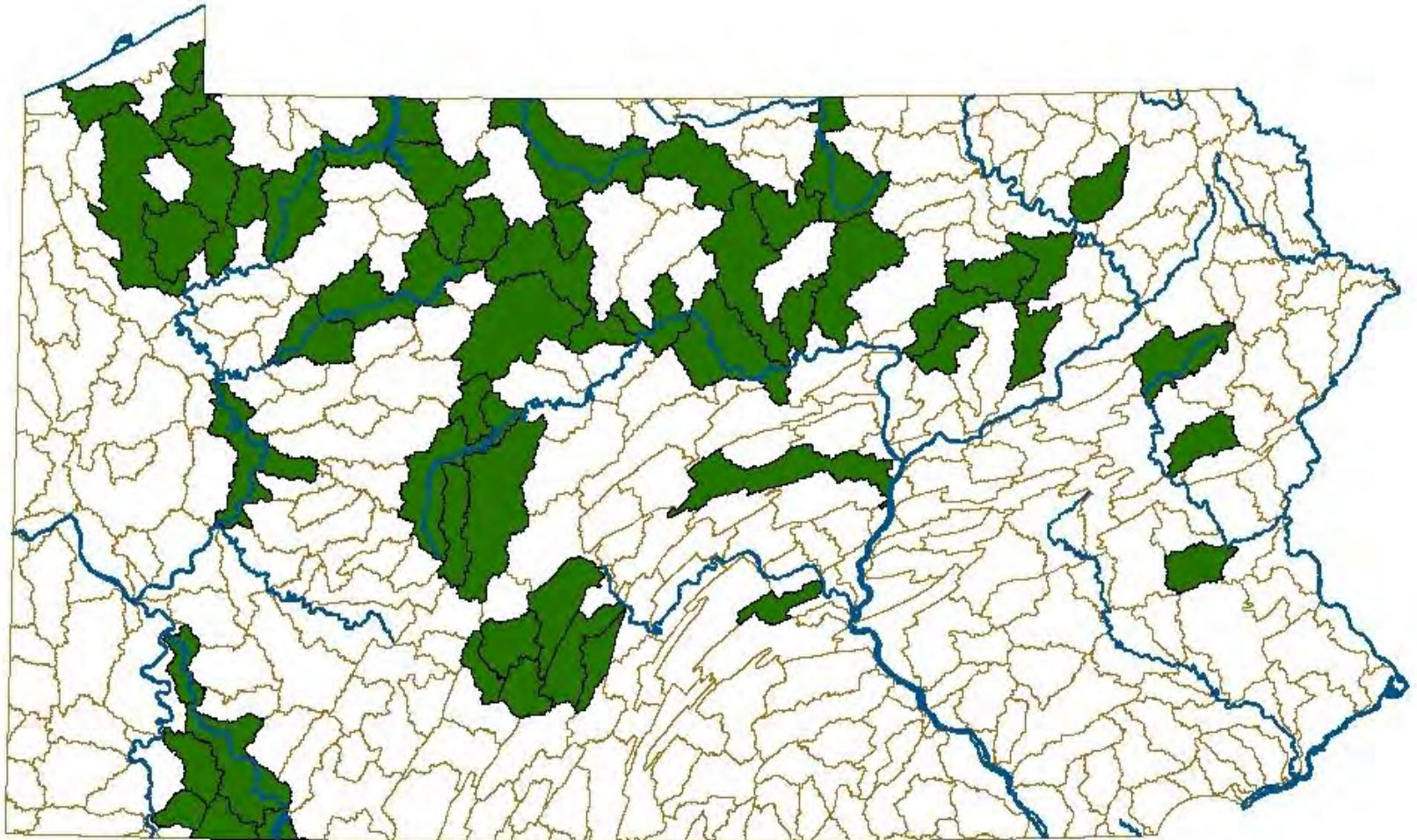


RED - GREATEST POSITIVE POPULATION CHANGE

GREEN - NEGATIVE OR LOWEST POSITIVE POPULATION CHANGE



Unassessed Waters Initiative – 2013 Priority Watersheds



Sampling Procedures

- Site located < 0.5 miles from mouth
- Water Quality Testing
- Fish Sampling - Electrofishing
- Site Length ~ 100 meters (328 ft)



Sampling Protocols for Pennsylvania's Wadeable Streams

**Pennsylvania Fish and Boat Commission
Bureau of Fisheries
2011**

Suggested Citation Formats:

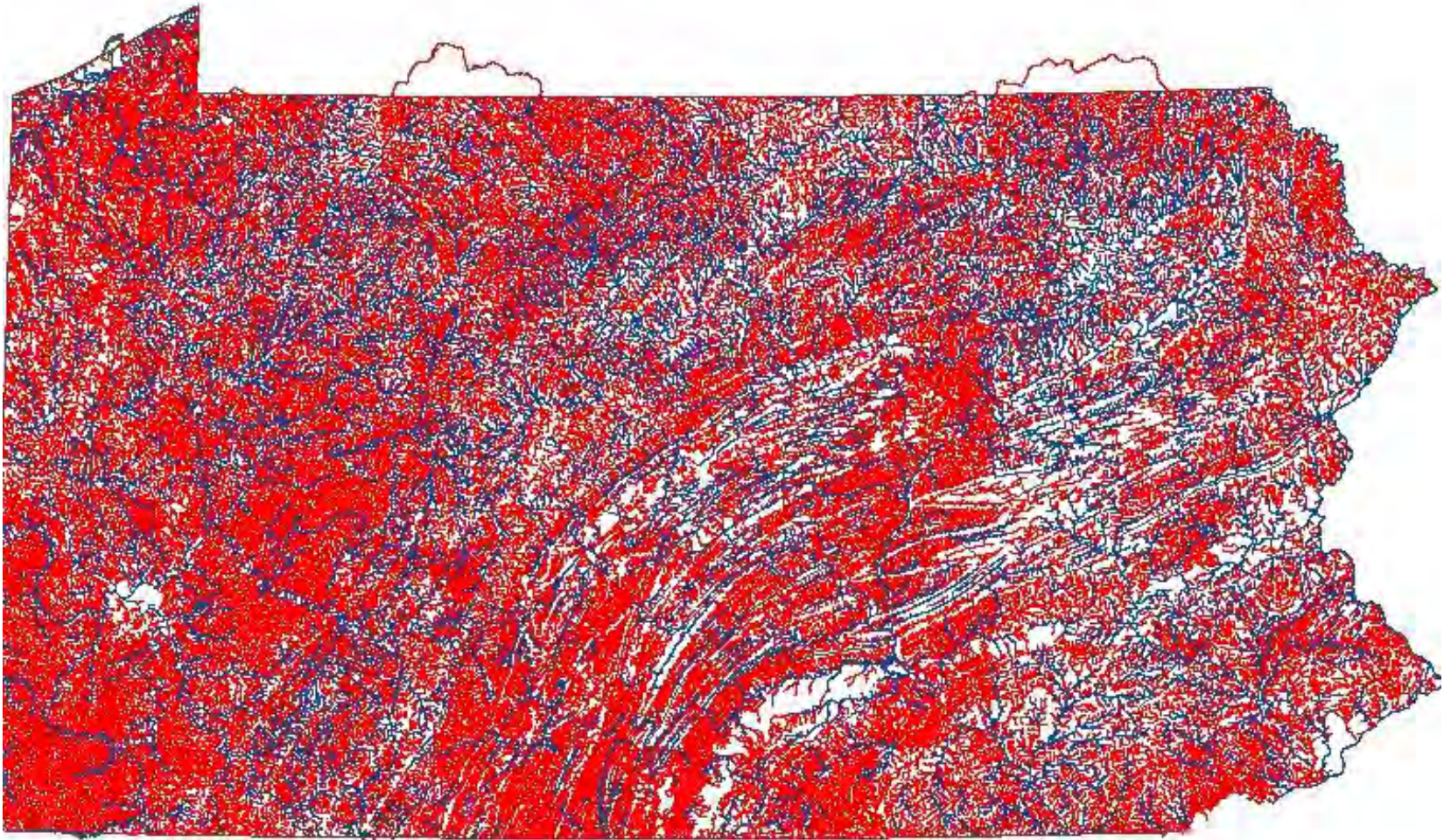
Entire book

Miko, D., editor. 2011. Sampling protocols for Pennsylvania's wadeable streams. Pennsylvania Fish and Boat Commission. Harrisburg, PA.

Module within the book

Detar, J., R. Wnuk, R.T. Greene, M. Kaufmann. 2011. Standard electrofishing protocols for sampling Pennsylvania wadeable streams. Pages 5-24 in D. Miko, editor, Sampling protocols for Pennsylvania's wadeable streams. Pennsylvania Fish and Boat Commission. Harrisburg, PA.

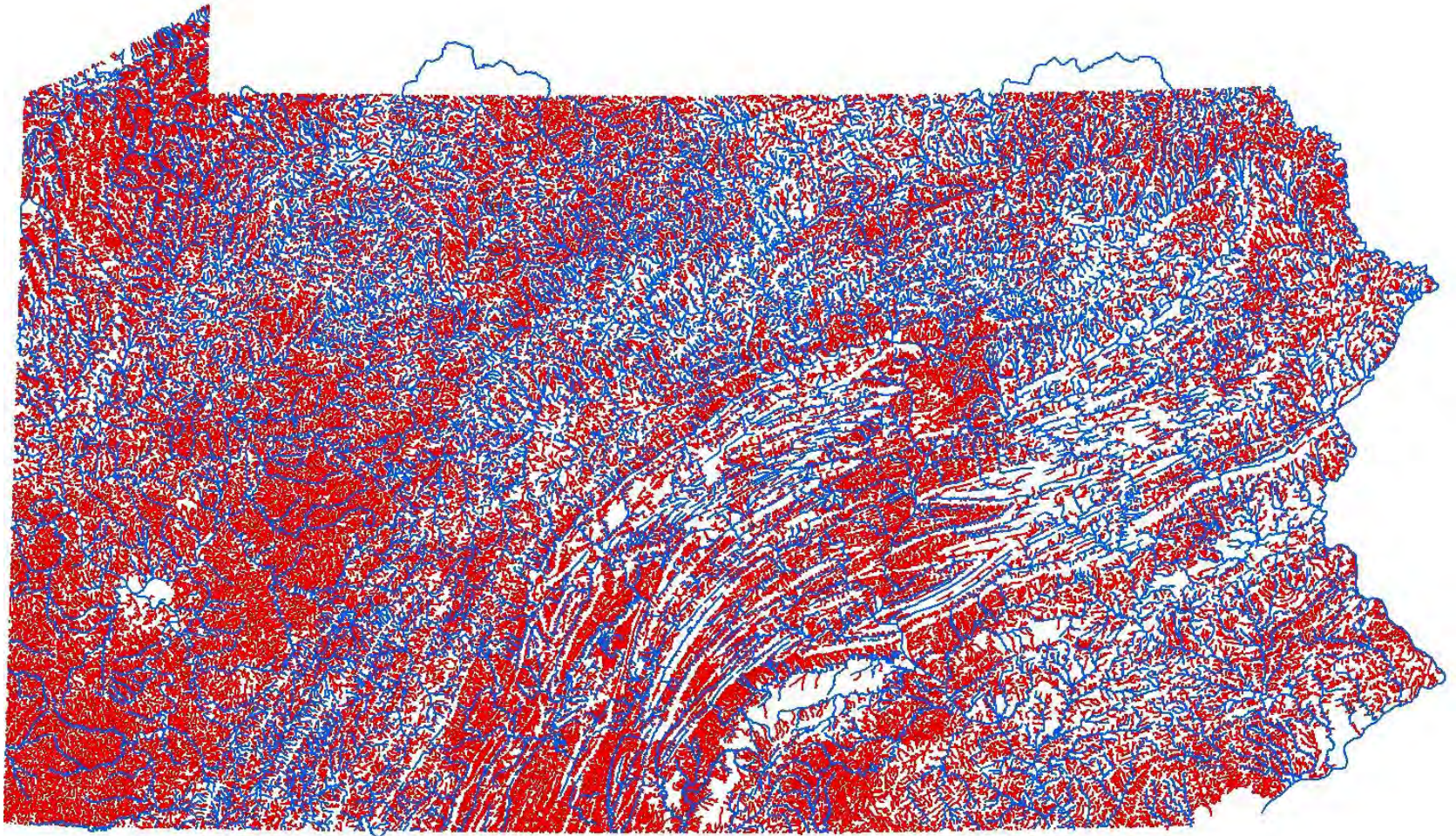
Pennsylvania's Flowing Water Resources - 2008



 **Surveyed Sections**

 **Unassessed Sections**

Pennsylvania's Flowing Water Resources - 2014

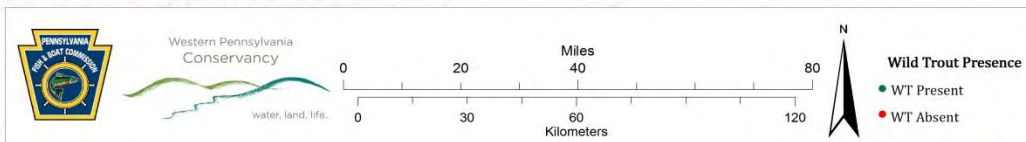
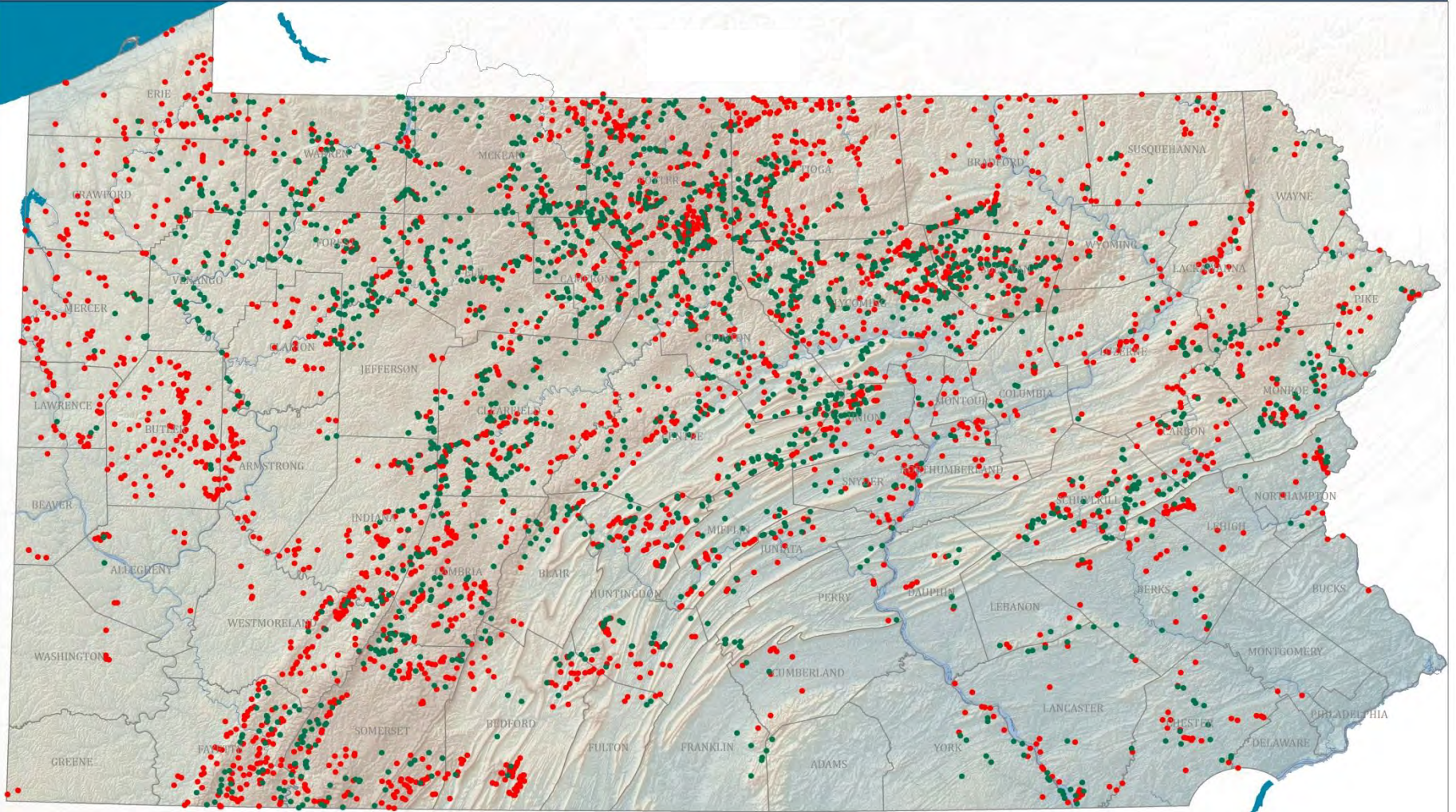


 **Surveyed Sections**

 **Unassessed Sections**

UNASSESSED WATERS INITIATIVE

Wild Trout Survey Distribution 2010 - 2015



Unassessed Waters Initiative Number of Streams Sampled

	<u>2010</u>	<u>2011</u>	<u>2012</u>	<u>2013</u>	<u>2014</u>	<u>2015</u>
Partners	86	437	606	766	724	522
PFBC Staff	217	305	262	324	336	370
Total	303 (809 mi)	742 (1,762 mi)	868 (2,057 mi)	1,090 (2,424 mi)	1,060 (1,959 mi)	892 (1,578 mi)
% Wild Trout	54%	55%	52%	38%	48%	40%

**6 Year Total – 4,955 Streams Sampled
10, 589 Miles of Streams**

Since 2010, 766 new streams added to the wild trout list (2,030 miles)

Implications of Wild Trout Designation

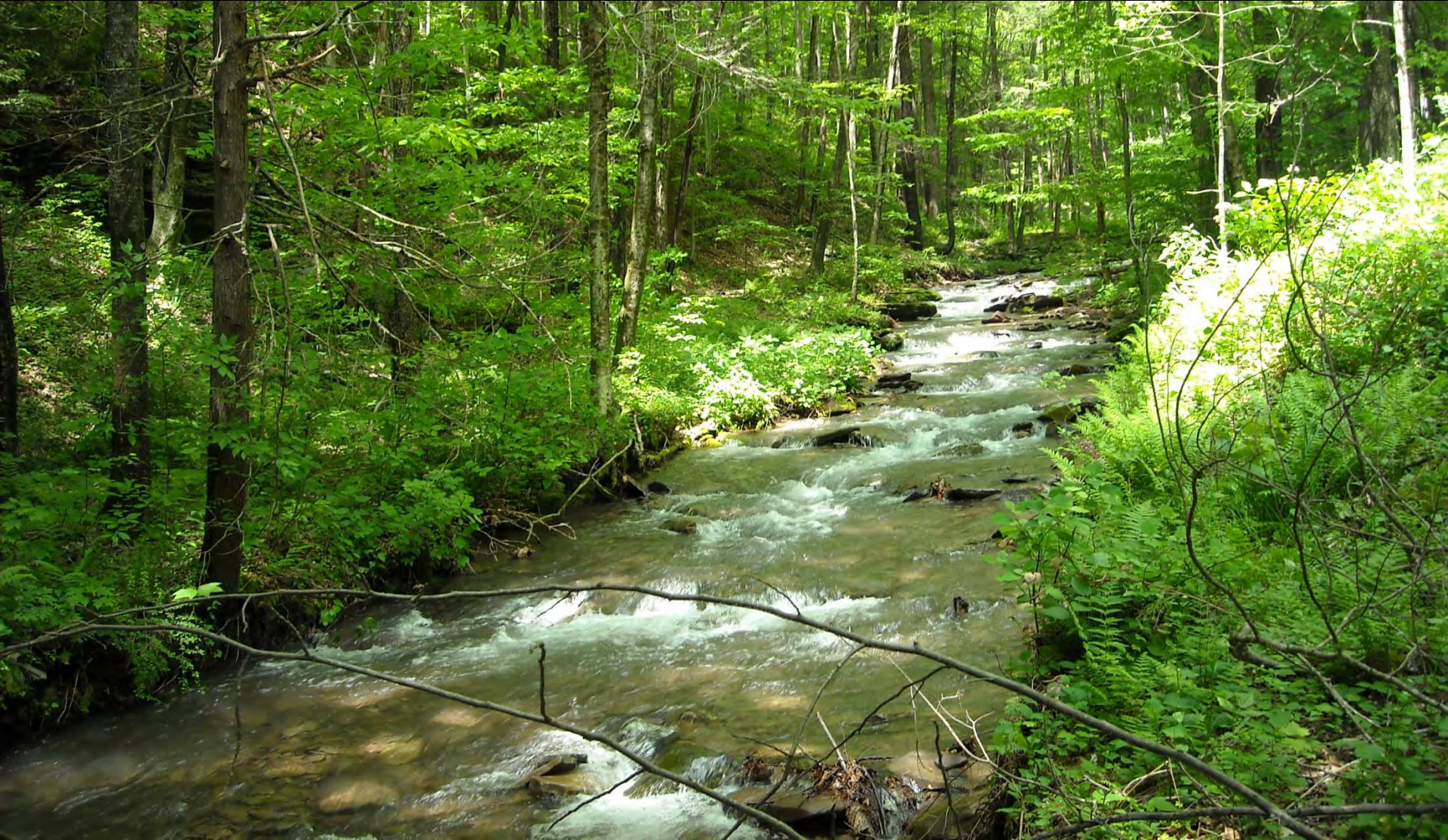
- Supports a minimum designated use of Cold Water Fishes (*25 Pa Code, Ch. 93*)
- Streams with greater biomass of wild trout may qualify for special protection*
- Wetlands associated with floodplain are designated as Exceptional Value (EV) wetlands (*Ch. 105*)
- Greater public knowledge of commonwealth's resources



*Class A designation qualify waters for special protected use High Quality, Cold Water Fishery (HQ-CWF)



Process Used to “Pick” Streams to Reclassify



58 PA Code, §57.11

Listing of Wild Trout Streams

§ 57.11. Listing of wild trout streams.

(a) Maintenance of list.

(b) Criteria for classifying wild trout streams.

(1) Location and habitat.

(2) Exclusion of stocked trout.

(3) Biological criteria. In identifying a wild trout stream, the investigator should find one or more of the following:

Qualification to be Listed as a Wild Trout Water:

Three (3) Wild Trout captured of one species

All Young-of-Year (≤ 150 mm; 6 inches)

or

Representative of two age classes



58 PA Code, §57.11

Listing of Wild Trout Streams

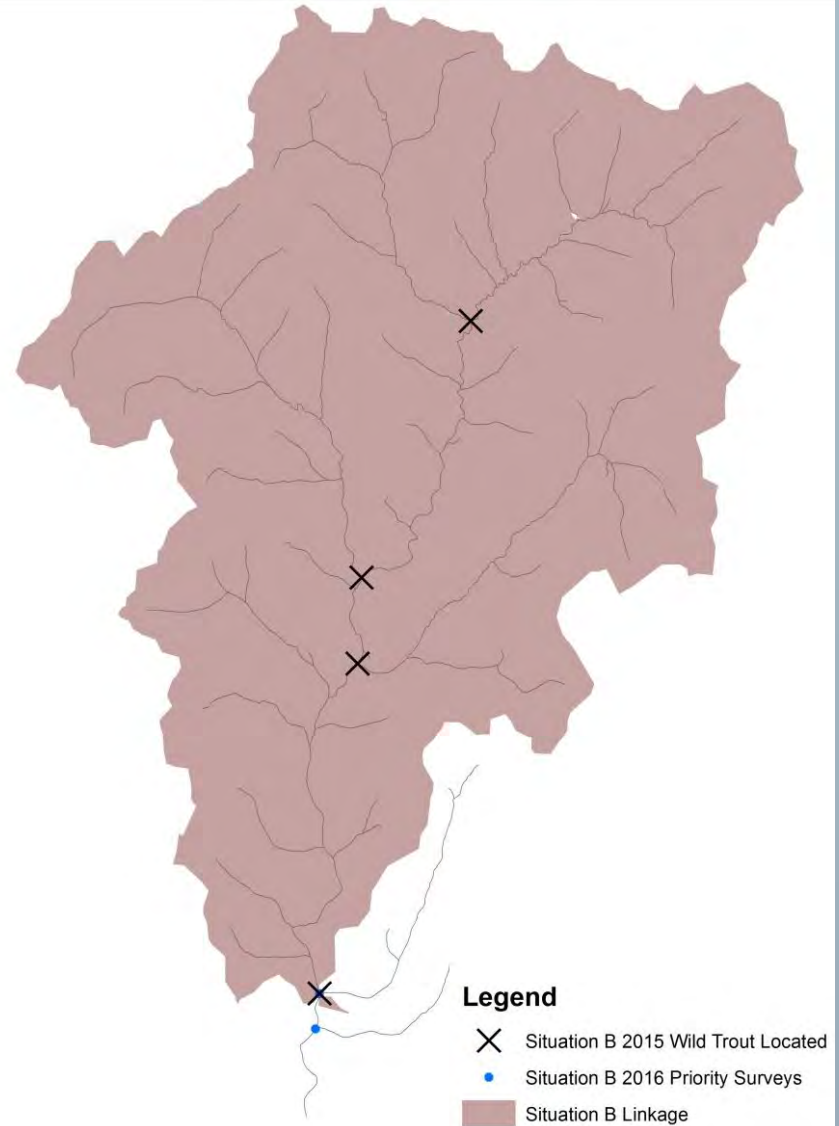
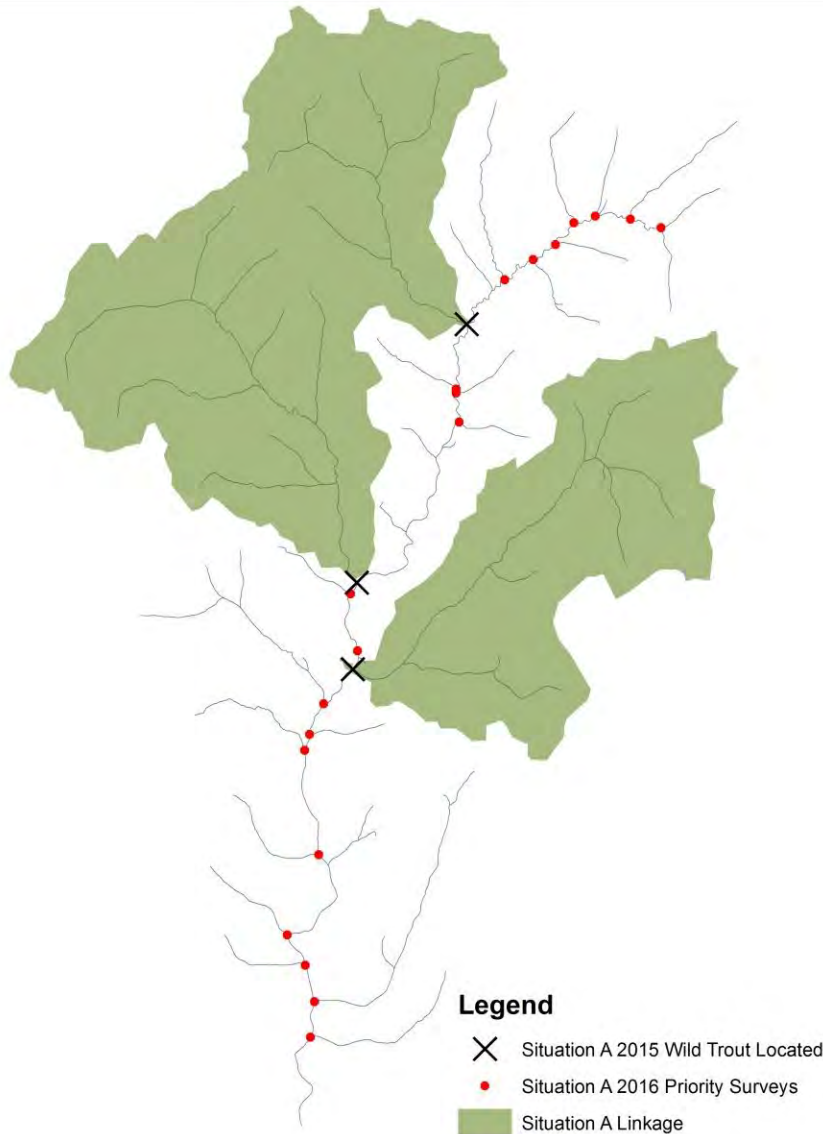
§ 57.11. Listing of wild trout streams.

(4) Tributary linkages. Tributaries to wild trout streams are classified as wild trout streams for their function as habitat for segments of wild trout populations, including nurseries and refuges, and in sustaining water quality necessary for wild trout.

This section cited in 25 Pa. Code § 105.1 (definitions).



Tributary Linkages (58 Pa Code, Ch. 57.11)



Wild Trout Designations - Process



Surveys/Data Collection

Wild Trout Criteria met? If Yes?

Listed on website as being considered for Wild Trout Designation (6 months)

Narrative written. Reviewed internally by CWU Leader – FM Division Chief - Bureau of Fisheries Chief

[Home](#) | [Fish](#) | [Boat](#) | [Habitat/Non game](#) | [Maps & Reports](#) | [About the PFBC](#) | [Centers](#) | [Commissions](#) | [FZGS](#) | [Grants](#) | [Learning Center](#) | [Partners & Links](#) | [Permits & Forms](#) | [Public Products](#) | [Regs. & Laws](#) | [Right-to-know](#)

Streams Being Considered for Wild Trout Designation

Step 1. Streams being Considered (current page)
 Step 2. Streams Officially Proposed for Listing
 Step 3. If approved, Streams added to Wild Trout Listings

The streams on this list have been sampled by the Pennsylvania Fish and Boat Commission and cooperating partners as part of an effort to collect baseline biological information from previously un-surveyed streams. Preliminary results from these surveys indicate that these streams may be eligible for consideration for inclusion on The Pennsylvania Fish and Boat Commission's list of Stream Sections Supporting Natural Reproduction of Trout (Wild Trout on table) and may support wild trout populations sufficient to designate a stream section as a Class A wild trout stream.

Before a stream is officially presented to the PFBC board of commissioners for consideration, the public will have 30 days to provide comments. The comment period will begin at least 60 days before the PFBC takes action at a quarterly meeting.

Please complete and submit this form to comment on this listing. If you would like to submit a public comment on waters that are formally being considered for action visit our [Proposed & Recent Regulations page](#), which lists Commission Notices.

County	Water Name	Tributary To	Survey Date	Sta Latitude/ Longitude	Proposed Designation	
					Class A	Wild Trout
Armstrong	Foundry Run	Mahoning Creek Lake	6/26/12	43 91195 - 79 22099		X
Bedford	Bank Run	Yellow Creek	8/1/12	40 16561 - 79 29608		X
Bedford	Tiger Run	Little Wilks Creek	8/13/13	39 83492 - 78 71725		X
Berks	Birch Creek	Little Northhill Creek	9/15/11	40 51378 - 76 1535		X
Berks	Let To Maiden Creek (on 15 71 - blue rocks)	Maiden Creek	8/7/12	40 58519 - 76 09231		X
Blair	Decker Run	Bald Eagle Creek	5/30/13	40 69048 - 78 23824		X
Blair	Dry Gap Run	Mill Run Reservoir	7/12/12	40 5202 - 78 46443		X
Blair	Elk Run	Little Juniata River	5/27/13	40 65635 - 79 22176		X
Blair	Green Spring Run	Bells Gap Run	5/22/13	40 61526 - 78 43217		X
Blair	Hutchinson Run	Little Juniata River	4/9/03	40 69037 - 78 27422		X
Blair	Kelso Run	Bells Gap Run	5/29/13	40 619917 - 78 38936		X

PA FISH AND BOAT COMMISSION
COMMENTS AND RECOMMENDATIONS
September 20, 2013

WATER: Tom's Run Basin (2176), Clarion County
 EXAMINED: June 18-19, 2012
 BY: Andrew Turner - Clarion University

Bureau Director Action: _____ Date: _____
 Division Chief Action: _____ Date: _____
 WW Unit Leader Action: _____ Date: _____
 CW Unit Leader Action: _____ Date: _____

CWU COMMENTS:

Unseasoned Waters partner Clarion University surveyed 4 tributaries in the Tom's Run drainage in June 2012 as part of the Unseasoned Waters program. These streams had never previously been surveyed. Sufficient numbers of wild trout were present in all of these watersheds to support their listing on the Pennsylvania Fish and Boat Commission's list of streams that support natural reproduction of trout.

RECOMMENDATIONS:

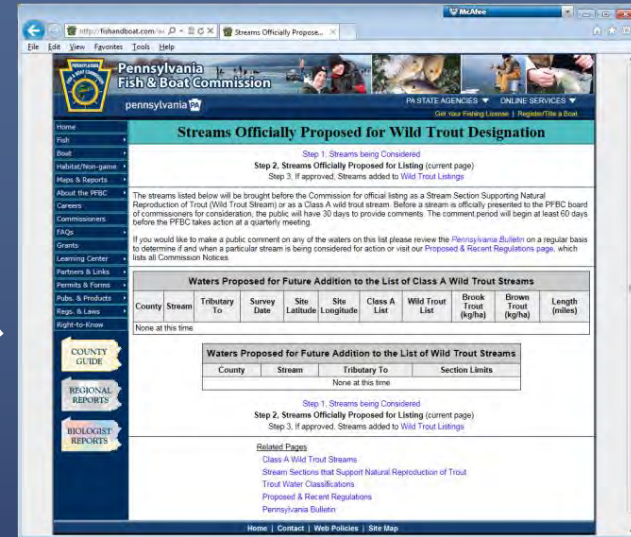
1. Add Chapel Run, Section 01, (from the headwaters downstream to the mouth) to the list of stream sections that support natural reproduction of trout.
2. Add Tommy Run, Section 01, (from the headwaters upstream to the mouth) to the list of stream sections that support natural reproduction of trout.
3. Add Little McFreen Run, Section 01, (from the headwaters downstream to the mouth) to the list of stream sections that support natural reproduction of trout.
4. Add McKen Run, Section 01, (from the headwaters downstream to the mouth) to the list of stream sections that support natural reproduction of trout.

BOF Chief Signature



Agenda item written. Posted in the Pennsylvania Bulletin for Public Comment.

Listed on website as being Officially proposed for Wild Trout Designation



Proposed Wild Trout Designations voted on by Commission

60 Days



List of PA Stream Sections that Support Natural Reproduction of Trout



Stream Sections That Support Natural Reproduction of Trout

Pennsylvania Wild Trout Waters (Natural Reproduction) - October 2016

County of Mouth	Water	Trib To	Wild Trout Limits	Lower Limit Lat	Lower Limit Lon	Length (miles)
Adams	Birch Run	Long Pine Run Reservoir	Headwaters dnst to mouth	39.950279	-77.444443	3.82
Adams	Hosack Run	Conococheague Creek	Headwaters dnst to mouth	39.914780	-77.467522	2.90
Adams	Latimore Creek	Bermudian Creek	Headwaters dnst to mouth	40.003613	-77.061386	7.00
Adams	Little Marsh Creek	Marsh Creek	Headwaters dnst to T-315	39.842220	-77.372780	3.80
Adams	Marsh Creek	Not Recorded	Headwaters dnst to SR0030	39.853802	-77.288300	11.12
Adams	Opossum Creek	Conewago Creek	Headwaters dnst to mouth	39.931667	-77.185555	12.10
Adams	Stillhouse Run	Conococheague Creek	Headwaters dnst to mouth	39.915470	-77.467575	1.28
Allegheny	Allegheny River	Ohio River	Headwater dnst to conf Reed Run	41.751389	-78.107498	21.80
Allegheny	Little Sewickley Creek	Ohio River	Headwaters dnst to mouth	40.554253	-80.206802	7.91
Armstrong	Birch Run	Allegheny River	Headwaters to mouth	41.033300	-79.619414	1.10
Armstrong	Bullock Run	North Fork Pine Creek	Headwaters dnst to mouth	40.879723	-79.441391	1.81
Armstrong	Complanter Run	Buffalo Creek	Headwaters dnst to mouth	40.754444	-79.671944	1.76
Armstrong	Cove Run	Sugar Creek	Headwaters to mouth	40.987652	-79.634421	2.59
Armstrong	Crooked Creek	Allegheny River	Headwaters to conf Pine Rn	40.722221	-79.102501	8.18
Armstrong	Foundry Run	Mahoning Creek Lake	Headwaters dnst to mouth	40.910416	-79.221046	2.43
Armstrong	Glade Run	Allegheny River	Headwaters dnst to second trib upst from mouth	40.767223	-79.566940	10.51
Armstrong	Glade Run	Mahoning Creek Lake	Headwaters dnst to mouth	40.914787	-79.263321	7.53
Armstrong	North Fork Pine Creek	Pine Creek	Headwaters dnst to mouth	40.873890	-79.468613	7.90
Armstrong	Pine Run	Sugar Creek	Headwaters dnst to mouth	40.986111	-79.654724	3.76
Armstrong	Scrubgrass Creek	Mahoning Creek	Headwaters dnst to Pine Township Line	40.915001	-79.395836	4.40
Armstrong	Snyders Run	Allegheny River	Headwaters dnst to mouth	40.970554	-79.591110	2.04
Bedford	Bear Run	Maple Run	Headwaters dnst to mouth	40.207500	-78.317780	0.76
Bedford	Beaver Creek	Yellow Creek	Headwaters dnst to mouth	40.159721	-78.373611	8.95
Bedford	Big Break Hollow	Wallacks Branch	Headwaters downstream to mouth	40.269855	-78.618324	1.90
Bedford	Bobs Creek	Dunning Creek	Headwaters dnst to mouth	40.144169	-78.557220	21.08
Bedford	Brush Creek	Raystown Branch Juniata River	Headwaters dnst to Bedford County Line	39.951668	-78.238892	10.40
Bedford	Ciana Run	Rhodes Run	Headwaters downstream to mouth	40.294300	-78.603996	1.50
Bedford	Cove Creek	Raystown Branch Juniata River	Headwaters dnst to mouth	40.005833	-78.416664	18.80
Bedford	Deep Hollow Run	Pavia Run	Headwaters downstream to mouth	40.265659	-78.584251	1.89
Bedford	Maple Run	Yellow Creek	Headwaters dnst to mouth	40.150002	-78.334724	7.25
Bedford	Ott Town Run	Cove Creek	Headwaters dnst to mouth	39.978611	-78.440833	0.60
Bedford	Pavia Run	Bobs Creek	Headwaters to the confluence with Deep Hollow Run	40.265609	-78.584279	1.91
Bedford	Potter Creek	Yellow Creek	Headwaters dnst to mouth	40.189167	-78.375275	5.42
Bedford	Rhodes Run	Bobs Creek	Headwaters dnst to State Game Lands # 26 Boundary	40.294445	-78.599998	1.66
Bedford	Shawnee Branch	Raystown Branch Juniata River	Headwaters dnst to backwaters of Shawnee Lake	40.038544	-78.647560	7.05
Bedford	Sherman Valley Run	Raystown Branch Juniata River	Headwaters dnst to mouth	40.086945	-78.291946	8.17
Bedford	Sugar Camp Run	Raystown Branch Juniata River	Headwaters downstream to mouth	40.221386	-78.252335	3.37
Bedford	Sweet Root Creek	Town Creek	Headwaters dnst to mouth	39.816666	-78.488892	6.18
Bedford	Sweet Root Run	Sweet Root Creek	Headwaters dnst to mouth	39.832779	-78.448891	2.50

25 PA Code, §93.4b

Qualifying as High Quality or Exceptional Value Waters

(a) *Qualifying as a High Quality Water.* A surface water that meets one or more of the following conditions is a High Quality Water.

(1) *Chemistry.*

(2) *Biology.* One or more of the following shall exist:

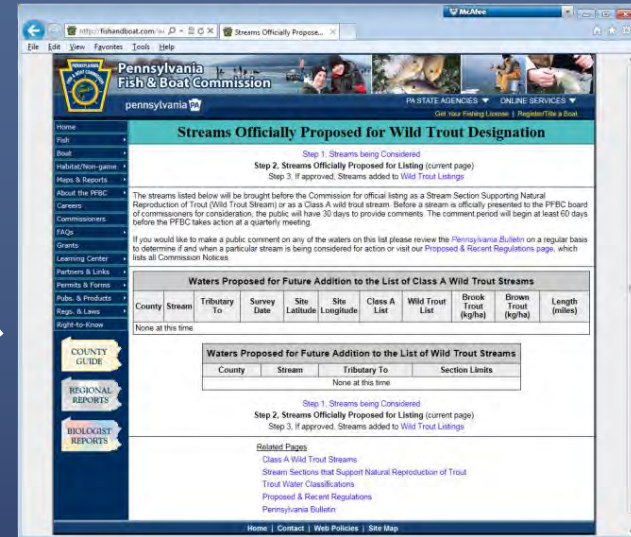
(i) *Biological assessment qualifier.*

(ii) *Class A wild trout stream qualifier.* The surface water has been designated a Class A wild trout stream by the Fish and Boat Commission following public notice and comment.



Agenda item written. Posted in the Pennsylvania Bulletin for Public Comment.

Listed on website as being Officially proposed for Class A Wild Trout Designation



Proposed Class A Wild Trout Designations voted on by

60 Days



List of Class A Wild Trout Waters



Class A Wild Trout Waters



Class A Wild Trout Waters
Created: October 17, 2016

Definition of Class A Waters:

Streams that support a population of naturally produced trout of sufficient size and abundance to support a long-term and rewarding sport fishery.

Management:

Natural reproduction, wild populations with no stocking.

Definition of Ownership:

Percent Public Ownership: the percent of stream section that is within publicly owned land is listed in this column, publicly owned land consists of state game lands, state forest, state parks, etc.

Important Note to Anglers:

Many waters in Pennsylvania are on private property, the listing or mapping of waters by the Pennsylvania Fish and Boat Commission DOES NOT guarantee public access. Always obtain permission to fish on private property.

County	Water	Section	Fishery	Section Limits	Lower Limit Latitude	Lower Limit Longitude	Length (miles)	Percent Public Ownership
Adams	Carbaugh Run	1	Brook	Headwaters to Carbaugh Reservoir pool	39.871810	-77.451700	1.50	100
Adams	East Branch Antietam Creek	1	Brook	Headwaters to Waynesboro Reservoir inlet	39.818420	-77.456300	2.40	100
Bedford	Bear Run	1	Brook	Headwaters to Mouth	40.207730	-78.317500	0.77	100
Bedford	Potter Creek	2	Brown	T 609 bridge to Mouth	40.189160	-78.375700	3.30	0
Bedford	Three Springs Run	2	Brown	Rt 869 bridge at New Enterprise to Mouth	40.171320	-78.377000	2.00	0
Bedford	Yellow Creek	2	Brown	Outlet of Keagy Dam to outlet of Waterside Dam	40.186750	-78.376400	1.60	0
Bedford	Yellow Creek	4	Brown	Beaver Creek to Red Bank Hill	40.157320	-78.345700	1.70	1
Bedford	Yellow Creek	5	Brown	Red Bank Hill to Maple Run	40.150240	-78.334700	0.93	45
Bedford-Blair	Bobs Creek	2	Mixed Brook/Brown	SR 3001 bridge to Rhodes Run	40.290560	-78.610800	4.40	100
Berks	Beaver Run	1	Brown	Headwaters to Mouth	40.226200	-75.852000	3.10	0
Berks	Bieber Creek	2	Brown	SR 2026 bridge Boyers Junction to dam at SR 1021 and T 593 junction	40.413950	-75.761000	2.24	0



Pennsylvania Fish & Boat Commission

Division of Environmental Services

450 Robinson Lane
Bellefonte, PA 16823
Phone: 814-359-5133
Fax: 814-359-5175

January 20, 2016

Mr. Mark Brickner
DEP - Bureau of Water Standards and Facility Registration
Water Quality Standards Division
RCSOB, 400 Market Street
Harrisburg, PA 17101

Re: Class A Wild Trout Stream sections qualifying as High Quality Waters

Dear Mr. Brickner:

Pennsylvania Fish and Boat Commission (PFBC) staff have reviewed our records and actions for designation of Class A Wild Trout Streams for the period July 1, 2012 through December 31, 2015. We identified fifty-seven stream sections from fifty-one streams for this time period that were designated by our Board of Commissioners as Class A Wild Trout Streams, but were not listed in Chapter 93 Water Quality Standards Regulations as High Quality Waters. PFBC designations were subject to public comment and notice prior to Board of Commissioner action.

We respectfully submit the list of fifty-seven Class A Wild Trout Stream sections representing 148.2 stream miles that we recommend be reviewed by the Department of Environmental Protection for upgrade in existing and designated use to High Quality – Cold Water Fishes (HQ-CWF) in Table 1. These stream sections meet the Class A Wild Trout Stream qualifier for High Quality Waters as specified in Chapter 93, Water Quality Standards, §93.4b.

PFBC/DEP Interaction

- Wild trout – PFBC makes list available.
 - DEP considers if existing or designated use is CWF
 - Wetlands considered EV under Chapter 105
- Class A Wild Trout
 - PFBC advances listings
 - DEP considers existing use and whether to change designated use to HQ
 - EQB votes on streams for final rulemaking



Questions?



Mark Hartle, Pennsylvania Fish and Boat Commission
Phone: 814-359-5133 E-mail: mhartle@pa.gov

