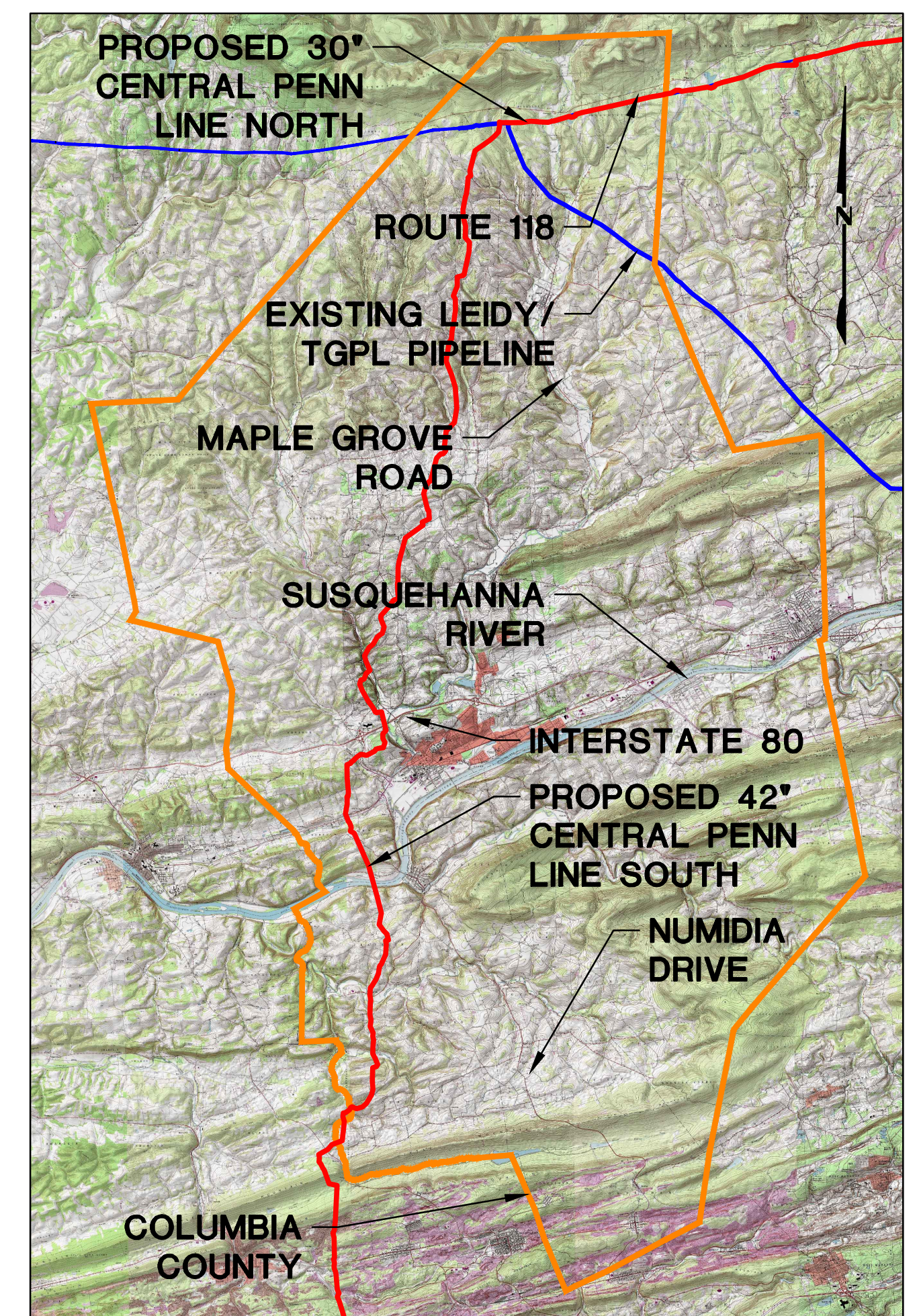


TRANSCONTINENTAL GAS PIPE LINE COMPANY, LLC SOIL EROSION & SEDIMENT CONTROL PLAN / SITE RESTORATION PLAN ATLANTIC SUNRISE PROJECT PROPOSED 30" CENTRAL PENN LINE NORTH

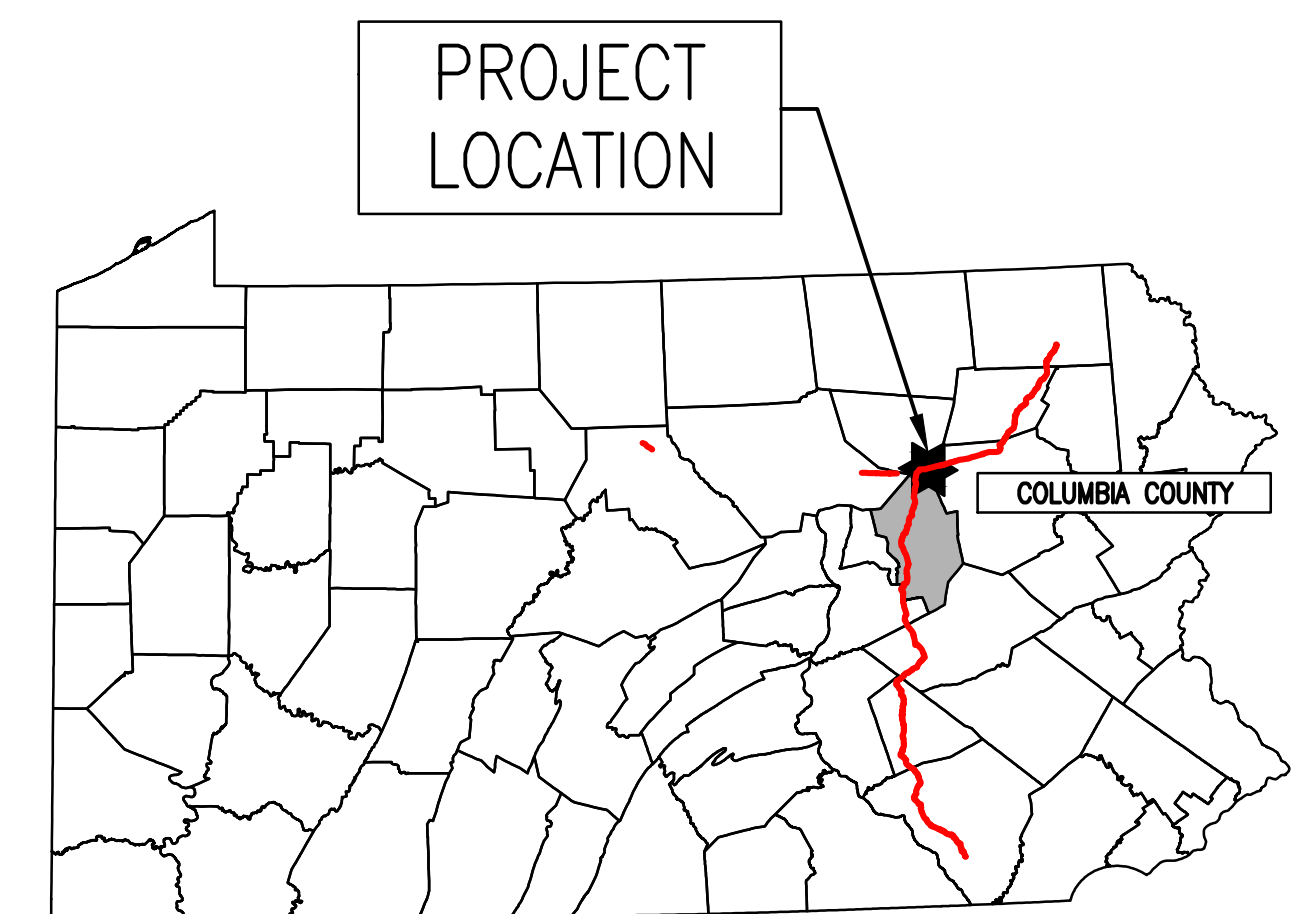
SUGARLOAF TOWNSHIP
COLUMBIA COUNTY
PENNSYLVANIA



ELK GROVE, RED ROCK, SWEET VALLEY, HARVEYS LAKE, CENTER MORELAND,
FACTORYVILLE, HOP BOTTOM, LENOXVILLE QUADRANGLES

VICINITY MAP

SCALE: 1"=20,000'



FACILITY NAME &/OR TYPE	DRAWING NO.	PHASE	SHEET NO.	DRAWING NAME
GENERAL OVERALL	24-1601-70-28-A/1683_3 <i>REVISED</i>	<i>REVISED</i>	1 of 2	COVER SHEET
		<i>REVISED</i>	2 of 2	LOCATION MAP AND PLAN SHEET INDEX
ALIGNMENT SHEETS	24-1601-70-28-A/1683_3 <i>REVISED</i>	<i>REVISED</i>	1 of 5	SOIL EROSION AND SEDIMENT CONTROL PLAN / SITE RESTORATION PLAN
		<i>REVISED</i>	2 of 5	SOIL EROSION AND SEDIMENT CONTROL PLAN / SITE RESTORATION PLAN
		<i>1 REVISED</i>	3 of 5	SOIL EROSION AND SEDIMENT CONTROL PLAN / SITE RESTORATION PLAN
		<i>REVISED</i>	4 of 5	SOIL EROSION AND SEDIMENT CONTROL PLAN / SITE RESTORATION PLAN
		<i>REVISED</i>	5 of 5	SOIL EROSION AND SEDIMENT CONTROL PLAN / SITE RESTORATION PLAN
CN-CSA-CO-1-002	24-1601-70-28-A/1683_3- CSA-CN-CSA-CO-1-002	2	1 of 2	SOIL EROSION & SEDIMENT CONTROL PLAN
2	2 of 2	2 of 2	SITE RESTORATION PLAN	
CN-CSA-CO-4-009	24-1601-70-28-A/1683_3- CSA-CN-CSA-CO-4-009	2	1 of 2	SOIL EROSION & SEDIMENT CONTROL PLAN
			2 of 2	SITE RESTORATION PLAN
CN-HTA-CO-FISHING CREEK	24-1601-70-28-A/1683_3- CN-HTA-CO-FISHING CREEK	2	1 of 2	SOIL EROSION & SEDIMENT CONTROL PLAN
			2 of 2	SITE RESTORATION PLAN

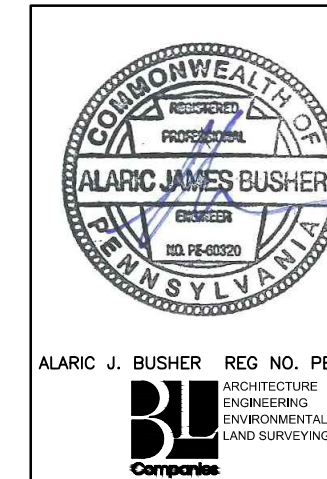
* REFER TO BEST MANAGEMENT PRACTICES AND QUANTITIES PLAN SET FOR NOTES AND DETAILS

MAP UNIT NAME	MAP UNIT DESIGNATION
Ba	BARBOUR FINE SANDY LOAM
Bb	BARBOUR GRAVELLY LOAM
Bd	BASHER FINE SANDY LOAM
Hs	HOLLY SILT LOAM
LaB2	LACKAWANNA CHANNERY LOAM, 3 TO 12 PERCENT SLOPES, MODERATELY ERODED
LcB	LACKAWANNA VERY STONY LOAM, 0 TO 12 PERCENT SLOPES
LcD	LACKAWANNA VERY STONY LOAM, 12 TO 35 PERCENT SLOPES
LdF	LACKAWANNA AND OQUAGA VERY STONY SOILS, 35 TO 100 PERCENT SLOPES
Ln	LICKDALE SILT LOAM
MrB	MORRIS CHANNERY SILT LOAM, 3 TO 8 PERCENT SLOPES
Ocb2	OQUAGA CHANNERY SILT LOAM, 3 TO 12 PERCENT SLOPES, MODERATELY ERODED
OcC2	OQUAGA CHANNERY SILT LOAM, 12 TO 20 PERCENT SLOPES, MODERATELY ERODED
OsB	OQUAGA VERY STONY SILT LOAM, 0 TO 12 PERCENT SLOPES
OsD	OQUAGA VERY STONY SILT LOAM, 12 TO 35 PERCENT SLOPES
W	WATER
WIC2	WELLSBORO CHANNERY SILT LOAM, 8 TO 15 PERCENT SLOPES, MODERATELY ERODED
WhB	WELLSBORO VERY STONY SILT LOAM, 0 TO 8 PERCENT SLOPES
WpD	WOOSTER VERY STONY SILT LOAM, 12 TO 35 PERCENT SLOPES
WsB	WOOSTER AND CANFIELD VERY STONY LOAMS, 0 TO 12 PERCENT SLOPES



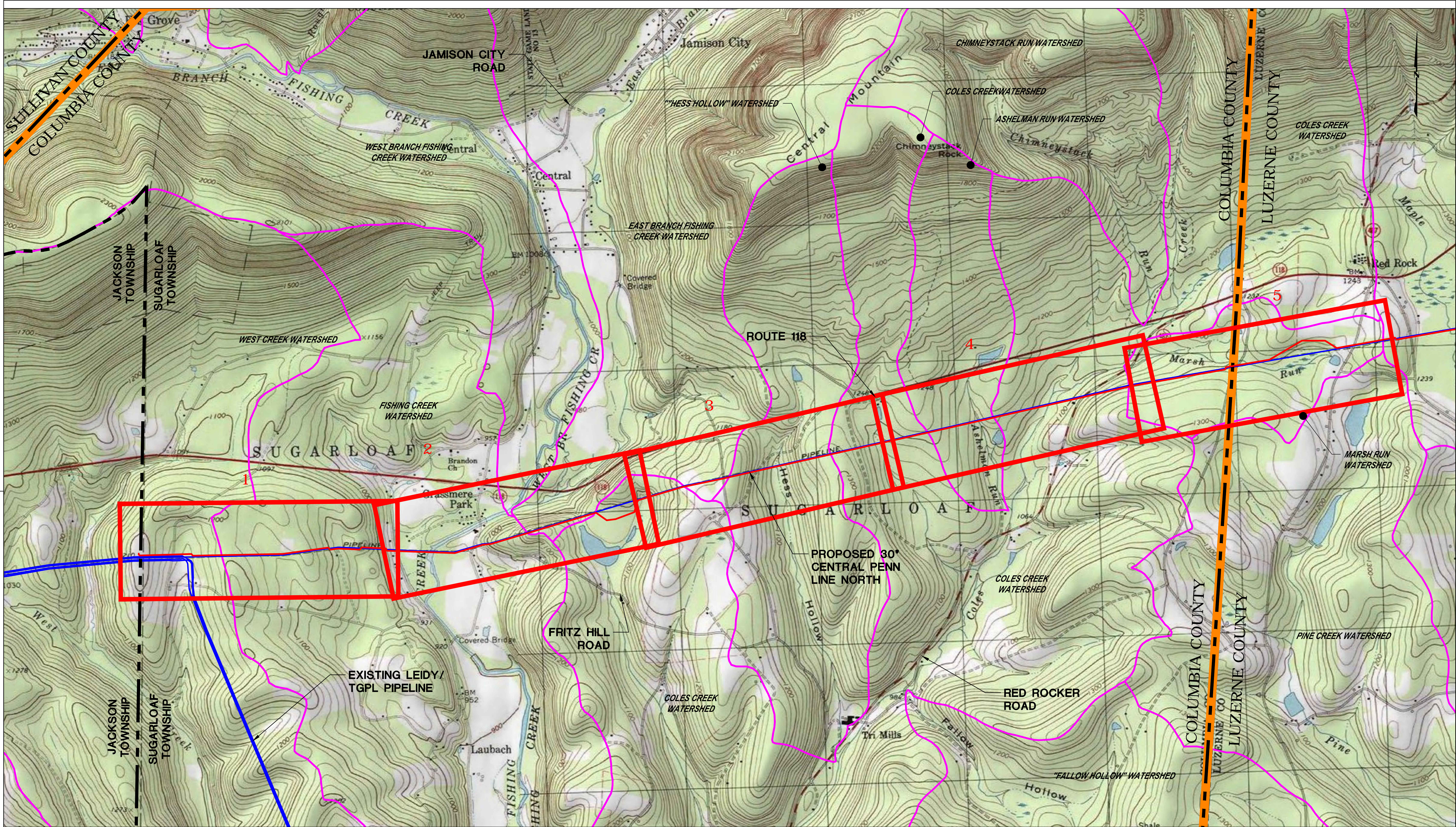
PENNSYLVANIA ACT 287 (1974)
AS AMENDED BY PENNSYLVANIA
ACT 199 (2004) REQUIRES NO
LESS THAN THREE (3) WORKING
DAYS AND NO MORE THAN (10)
WORKING DAYS NOTICE TO
UTILITIES BEFORE YOU EXCAVATE,
DRILL, BLAST OR DEMOLISH.

ENGINEER OF RECORD
BL COMPANIES
4242 CARLISLE PIKE, SUITE 260
CAMP HILL, PA 17011
P:717-651-9850
F:717-651-9858









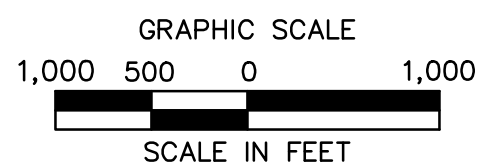
REVISIONS				NO.		DATE		BY		DESCRIPTION		W.D. NO.		CHK.		APP.	
0	08/26/2015	BL	ISSUED FOR PADEP SUBMITTAL	W01161481	DAK	AJB											
1	12/02/2015	BL	ISSUED FOR PADEP RESUBMITTAL	W01161481	DAK	AJB											
2	02/04/2016	BL	ISSUED FOR PADEP RESUBMITTAL	W01161481	DAK	AJB											
3	03/26/2016	BL	ISSUED FOR PADEP RESUBMITTAL	W01161481	DAK	AJB											
4	Oct. 2016	BL	PADEP TECHNICAL DEFICIENCY RESPONSE #1	W01161481	DAK	AJB											
5	April 2017	BL	PADEP TECHNICAL DEFICIENCY RESPONSE #2	W01161481	DAK	AJB											
6	AUG. 2017	BL	PADEP TECHNICAL DEFICIENCY RESPONSE #3	W01161481	DAK	AJB											

TRANSCONTINENTAL GAS PIPE LINE COMPANY, LLC				SCALE: NONE			
SOIL EROSION & SEDIMENT CONTROL PLAN / SITE RESTORATION PLAN				REVISION: 6			
ATLANTIC SUNRISE PROJECT				DRAWING NUMBER: 24-1601-70-28-A/1683_3			
PROPOSED 30" CENTRAL PENN LINE NORTH				SHEET 1			
COVER SHEET				OF 2			
COLUMBIA COUNTY, PENNSYLVANIA				W01161481			
DRAWN BY:	DAK	DATE:	11/2014	ISSUED FOR BID:		SCALE:	NONE
CHECKED BY:	JLK	DATE:	03/13/2015	ISSUED FOR CONSTRUCTION:		REVISION:	6
APPROVED BY:	AJB	DATE:	03/13/2015	DRAWING NUMBER:	24-1601-70-28-A/1683_3	SHEET:	1
W.D.:	W01161481					OF:	2

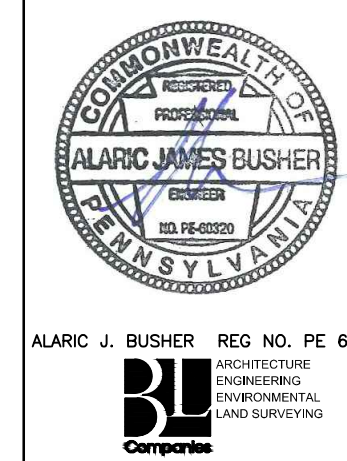


LEGEND

-  SHEET INDEX TILE (# OF 5)
-  WATERSHED BOUNDARY
-  TOWNSHIP LINE
-  COUNTY LINE
-  PROPOSED 30° CENTRAL PENN LINE NORTH
-  EXISTING LEIDY/ TGPL PIPELINE




PENNSYLVANIA ACT 287 (1974) AS AMENDED BY PENNSYLVANIA ACT 199 (2004) REQUIRES NO LESS THAN THREE (3) WORKING DAYS AND NO MORE THAN (10) WORKING DAYS NOTICE TO UTILITIES BEFORE YOU EXCAVATE, DRILL, BLAST OR DEMOLISH.



REVISIONS						
NO.	DATE	BY	DESCRIPTION	W.D. NO.	CHK.	APP.
0	08/28/2015	BL	ISSUED FOR PADEP SUBMITTAL	W01161481	DAK	AJB
1	12/02/2015	BL	ISSUED FOR PADEP RESUBMITTAL	W01161481	DAK	AJB
2	02/04/2016	BL	ISSUED FOR PADEP RESUBMITTAL	W01161481	DAK	AJB
3	03/28/2016	BL	ISSUED FOR PADEP RESUBMITTAL	W01161481	DAK	AJB
4	06/01/2016	BL	PADEP TECHNICAL DEFICIENCY RESPONSE #1	W01161481	DAK	AJB
5	08/11/2017	BL	PADEP TECHNICAL DEFICIENCY RESPONSE #2	W01161481	DAK	AJB
6	AUG. 2017	BL	PADEP TECHNICAL DEFICIENCY RESPONSE #3	W01161481	DAK	AJB

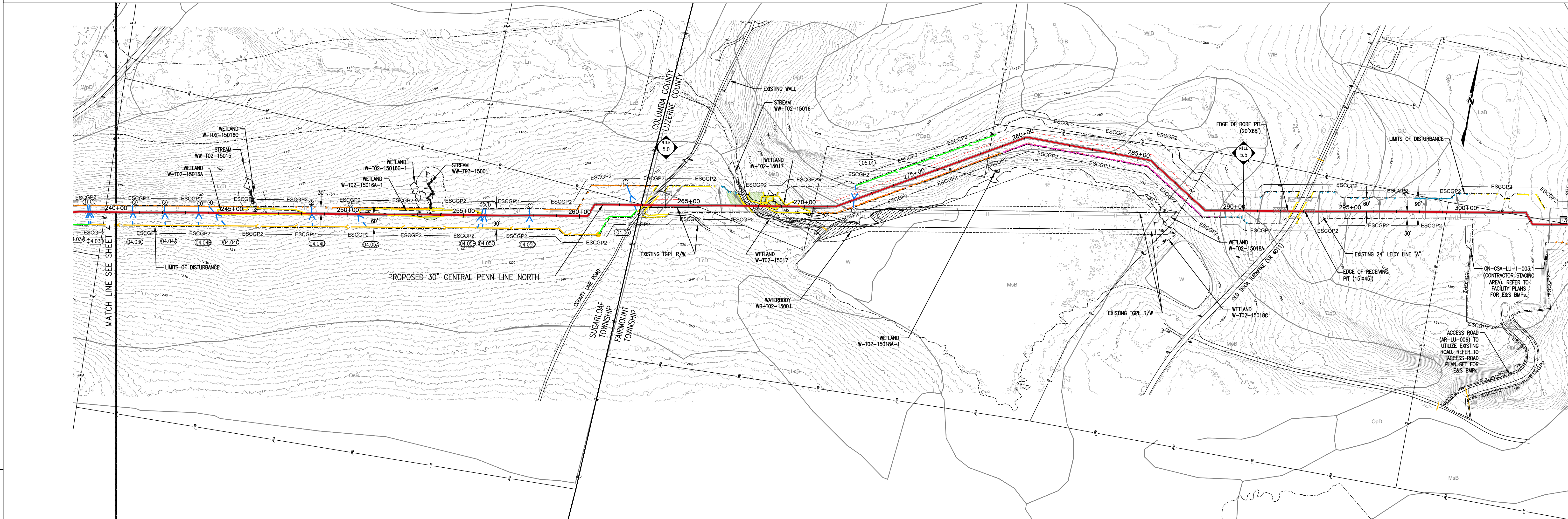
TRANSCONTINENTAL GAS PIPE LINE COMPANY, LLC
 SOIL EROSION & SEDIMENT CONTROL PLAN / SITE RESTORATION PLAN
 ATLANTIC SUNRISE PROJECT
 PROPOSED 30° CENTRAL PENN LINE NORTH
 LOCATION MAP AND PLAN INDEX SHEET
 COLUMBIA COUNTY, PENNSYLVANIA



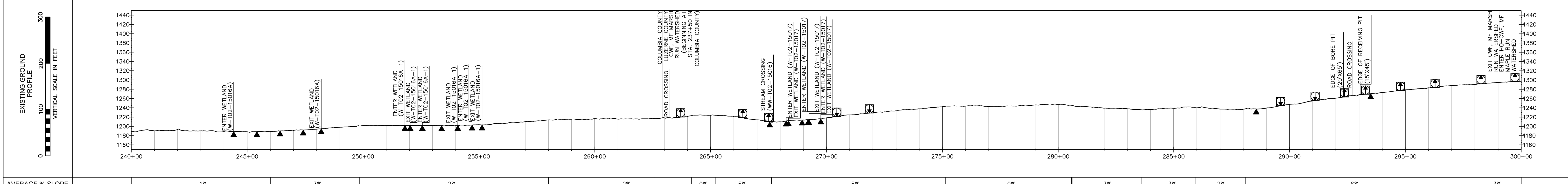
DRAWN BY:	DAK	DATE:	11/2014	ISSUED FOR:	CONSTRUCTION	SCALE:	1" = 1,000'
CHECKED BY:	JLK	DATE:	03/13/2015	ISSUED FOR:	CONSTRUCTION	REVISION:	6
APPROVED BY:	AJB	DATE:	03/13/2015	DRAWING NUMBER:	24-1601-70-28-A/1683_3	SHEET	2
W.D.:	W01161481					OF	2

Drawn By & Date/Time: TDelo Jul 27, 2017 - 8:36am
 Drawing Location & Name: G:\08514\14C\14C4909\DWG\010-CPLN\PL_CV14C4909(10)_ES-COL.dwg

SUGARLOAF TOWNSHIP / FAIRMOUNT TOWNSHIP



LAND USE	14	5	14	5	14	5	14	5	14	43	14	5	41	43	41	43	41	14	41
SOIL TYPE																			
E & S DETAIL: (DP) OR (SP)																			
DETAIL GROUP:																			



AVERAGE % SLOPE	1%	3%	2%	2%	0%	5%	5%	0%	3%	3%	2%	6%	3%
-----------------	----	----	----	----	----	----	----	----	----	----	----	----	----

EROSION CONTROL LEGEND

WATERBAR SPACING	TRENCH PLUG SPACING	WATERBARRIERS	WATERBARRIERS
SLOPE (%) SPACING (FT)	SLOPE (%) SPACING (FT)	WVF - WARM WATER FISHES	WVF - WARM WATER FISHES
<5 200	<5 1000	CWF - COLD WATER FISHES	CWF - COLD WATER FISHES
5-15 150	5-15 500	MF - MIGRATORY FISHES	MF - MIGRATORY FISHES
15-30 100	>15-25 300	TSF - TROUT STOCKING	TSF - TROUT STOCKING
>30 50	>25-35 200	HQ - HIGH QUALITY WATERS	HQ - HIGH QUALITY WATERS
	>30 100	EV - EXCEPTIONAL VALUE WATER	EV - EXCEPTIONAL VALUE WATER

THE LOCATIONS OF TRENCH PLUGS HAVE BEEN SHOWN ON THE PROFILE ONLY.

AT A MINIMUM, WATERBARRIERS SHALL BE LOCATED WITHIN 50 FT OF THE EDGES OF FLOW OF THE WATER INTERCEPTED BY THE WATERBAR IN PLAN VIEW. THE WATERBAR SHALL BE INSTALLED AT A MAXIMUM 2% SLOPE IN THE DIRECTION OF THE ARROW.

* SOILS IDENTIFIED BY NRCS AS ACID-PRODUCING WITH A pH LESS THAN 4.0.
 ** POTENTIALLY SIGNIFICANT ACID-PRODUCING BEDROCK IDENTIFIED BY PADEP, PAQS AND PA DCMR.

WATERSHED ABBREVIATIONS

WVF - WARM WATER FISHES
 CWF - COLD WATER FISHES
 MF - MIGRATORY FISHES
 TSF - TROUT STOCKING
 HQ - HIGH QUALITY WATERS
 EV - EXCEPTIONAL VALUE WATER

E & S DETAIL GROUP LEGEND FOR PIPELINE CROSSINGS

TYPICAL WATERSHED

WETLANDS: (MAT), (WCC), (WCC-1), (WCC-2), (WCC-3), (WCC-4), (WCC-5), (WCC-6), (WCC-7), (WCC-8), (WCC-9), (WCC-10), (WCC-11), (WCC-12), (WCC-13), (WCC-14), (WCC-15), (WCC-16), (WCC-17), (WCC-18), (WCC-19), (WCC-20), (WCC-21), (WCC-22), (WCC-23), (WCC-24), (WCC-25), (WCC-26), (WCC-27), (WCC-28), (WCC-29), (WCC-30), (WCC-31), (WCC-32), (WCC-33), (WCC-34), (WCC-35), (WCC-36), (WCC-37), (WCC-38), (WCC-39), (WCC-40), (WCC-41), (WCC-42), (WCC-43), (WCC-44), (WCC-45), (WCC-46), (WCC-47), (WCC-48), (WCC-49), (WCC-50)

WATERBODIES: (W), (W-1), (W-2), (W-3), (W-4), (W-5), (W-6), (W-7), (W-8), (W-9), (W-10), (W-11), (W-12), (W-13), (W-14), (W-15), (W-16), (W-17), (W-18), (W-19), (W-20), (W-21), (W-22), (W-23), (W-24), (W-25), (W-26), (W-27), (W-28), (W-29), (W-30), (W-31), (W-32), (W-33), (W-34), (W-35), (W-36), (W-37), (W-38), (W-39), (W-40), (W-41), (W-42), (W-43), (W-44), (W-45), (W-46), (W-47), (W-48), (W-49), (W-50)

WETLAND/WATERBODIES: (W), (W-1), (W-2), (W-3), (W-4), (W-5), (W-6), (W-7), (W-8), (W-9), (W-10), (W-11), (W-12), (W-13), (W-14), (W-15), (W-16), (W-17), (W-18), (W-19), (W-20), (W-21), (W-22), (W-23), (W-24), (W-25), (W-26), (W-27), (W-28), (W-29), (W-30), (W-31), (W-32), (W-33), (W-34), (W-35), (W-36), (W-37), (W-38), (W-39), (W-40), (W-41), (W-42), (W-43), (W-44), (W-45), (W-46), (W-47), (W-48), (W-49), (W-50)

RAILROADS: (RR), (RR-1), (RR-2), (RR-3), (RR-4), (RR-5), (RR-6), (RR-7), (RR-8), (RR-9), (RR-10), (RR-11), (RR-12), (RR-13), (RR-14), (RR-15), (RR-16), (RR-17), (RR-18), (RR-19), (RR-20), (RR-21), (RR-22), (RR-23), (RR-24), (RR-25), (RR-26), (RR-27), (RR-28), (RR-29), (RR-30), (RR-31), (RR-32), (RR-33), (RR-34), (RR-35), (RR-36), (RR-37), (RR-38), (RR-39), (RR-40), (RR-41), (RR-42), (RR-43), (RR-44), (RR-45), (RR-46), (RR-47), (RR-48), (RR-49), (RR-50)

ROADS: (R), (R-1), (R-2), (R-3), (R-4), (R-5), (R-6), (R-7), (R-8), (R-9), (R-10), (R-11), (R-12), (R-13), (R-14), (R-15), (R-16), (R-17), (R-18), (R-19), (R-20), (R-21), (R-22), (R-23), (R-24), (R-25), (R-26), (R-27), (R-28), (R-29), (R-30), (R-31), (R-32), (R-33), (R-34), (R-35), (R-36), (R-37), (R-38), (R-39), (R-40), (R-41), (R-42), (R-43), (R-44), (R-45), (R-46), (R-47), (R-48), (R-49), (R-50)

SPECIAL PROTECTION WATERSHED

WETLANDS: (SP), (SP-1), (SP-2), (SP-3), (SP-4), (SP-5), (SP-6), (SP-7), (SP-8), (SP-9), (SP-10), (SP-11), (SP-12), (SP-13), (SP-14), (SP-15), (SP-16), (SP-17), (SP-18), (SP-19), (SP-20), (SP-21), (SP-22), (SP-23), (SP-24), (SP-25), (SP-26), (SP-27), (SP-28), (SP-29), (SP-30), (SP-31), (SP-32), (SP-33), (SP-34), (SP-35), (SP-36), (SP-37), (SP-38), (SP-39), (SP-40), (SP-41), (SP-42), (SP-43), (SP-44), (SP-45), (SP-46), (SP-47), (SP-48), (SP-49), (SP-50)

WATERBODIES: (S), (S-1), (S-2), (S-3), (S-4), (S-5), (S-6), (S-7), (S-8), (S-9), (S-10), (S-11), (S-12), (S-13), (S-14), (S-15), (S-16), (S-17), (S-18), (S-19), (S-20), (S-21), (S-22), (S-23), (S-24), (S-25), (S-26), (S-27), (S-28), (S-29), (S-30), (S-31), (S-32), (S-33), (S-34), (S-35), (S-36), (S-37), (S-38), (S-39), (S-40), (S-41), (S-42), (S-43), (S-44), (S-45), (S-46), (S-47), (S-48), (S-49), (S-50)

WETLAND/WATERBODIES: (S), (S-1), (S-2), (S-3), (S-4), (S-5), (S-6), (S-7), (S-8), (S-9), (S-10), (S-11), (S-12), (S-13), (S-14), (S-15), (S-16), (S-17), (S-18), (S-19), (S-20), (S-21), (S-22), (S-23), (S-24), (S-25), (S-26), (S-27), (S-28), (S-29), (S-30), (S-31), (S-32), (S-33), (S-34), (S-35), (S-36), (S-37), (S-38), (S-39), (S-40), (S-41), (S-42), (S-43), (S-44), (S-45), (S-46), (S-47), (S-48), (S-49), (S-50)

RAILROADS: (RR), (RR-1), (RR-2), (RR-3), (RR-4), (RR-5), (RR-6), (RR-7), (RR-8), (RR-9), (RR-10), (RR-11), (RR-12), (RR-13), (RR-14), (RR-15), (RR-16), (RR-17), (RR-18), (RR-19), (RR-20), (RR-21), (RR-22), (RR-23), (RR-24), (RR-25), (RR-26), (RR-27), (RR-28), (RR-29), (RR-30), (RR-31), (RR-32), (RR-33), (RR-34), (RR-35), (RR-36), (RR-37), (RR-38), (RR-39), (RR-40), (RR-41), (RR-42), (RR-43), (RR-44), (RR-45), (RR-46), (RR-47), (RR-48), (RR-49), (RR-50)

ROADS: (R), (R-1), (R-2), (R-3), (R-4), (R-5), (R-6), (R-7), (R-8), (R-9), (R-10), (R-11), (R-12), (R-13), (R-14), (R-15), (R-16), (R-17), (R-18), (R-19), (R-20), (R-21), (R-22), (R-23), (R-24), (R-25), (R-26), (R-27), (R-28), (R-29), (R-30), (R-31), (R-32), (R-33), (R-34), (R-35), (R-36), (R-37), (R-38), (R-39), (R-40), (R-41), (R-42), (R-43), (R-44), (R-45), (R-46), (R-47), (R-48), (R-49), (R-50)

BMP NOTES:

- DETAILS IN THIS LEGEND ARE NOT COMPREHENSIVE AND ONLY REFER TO BMPs RELATED TO PIPELINE CROSSINGS. ADDITIONAL BMPs ARE PROVIDED FOR ACCESS ROADS & FACILITIES.
- REFER TO BEST MANAGEMENT AND QUANTITIES PLAN SET FOR DESIGN, NOTES AND DETAILS.
- REFER TO CLEAN WATER CROSSING (CWC) DETAIL IN THE BEST MANAGEMENT AND QUANTITIES PLAN SET FOR TEMPORARY LEVEL SPREADER DESIGN.
- THE APPROX. LOCATION AND TYPE OF SEDIMENT BARRIERS TO BE INSTALLED ALONG THE CONSTRUCTION WORKSPACE ARE LOCATED IN TABLES IN THE BEST MANAGEMENT PRACTICES AND QUANTITIES PLAN SET.

GENERAL NOTES

- THE E&S DETAIL NUMBERS NOTED ABOVE AND IN THE E&S DETAIL GROUP LEGEND CORRESPOND TO SPECIFIC DETAILS THAT ARE COMPRISED OF PADEP APPROVED BEST MANAGEMENT PRACTICES (BMP) AND SUPPLEMENTAL CONSTRUCTION DETAILS TO BE FOLLOWED AND/OR INSTALLED DURING CONSTRUCTION OF THE PIPELINE.
- SOILS LEGEND PROVIDED IN THE SOIL EROSION AND SEDIMENT CONTROL NARRATIVE.
- A SUMP SHALL BE INSTALLED AT THE END OF EACH WATERBAR. REFER TO THE BEST MANAGEMENT PRACTICES AND QUANTITIES PLAN SET FOR INSTALLATION.
- WATERBODIES WITHOUT A FEMA-ESTABLISHED FLOODPLAIN, THE FLOODWAY IS COINCIDENT WITH A 50-FT OFFSET MEASURED LATERALLY FROM THE PHYSICAL WATERBODY TOP OF BANK.
- CONTRACTOR TO SEGREGATE TOPSOILS IN ALL AGRICULTURAL, RESIDENTIAL AND WETLAND USE AREAS. THE EXISTING SUBGRADE SHALL BE SCARIFIED PRIOR TO TOPSOIL PLACEMENT IN ALL AREAS.
- REFER TO ACID PRODUCING SOILS AND BEDROCK CONTROL PLANS FOR MITIGATION MEASURES OF SOILS WITH A pH BELOW 4.0.
- PROPOSED CLEAN WATER CROSSING SHOWN HEREIN ARE TEMPORARY STORMWATER RUNOFF CONVEYANCE BMPs ASSOCIATED WITH THE CHAPTER 102 ESCGP-2 APPLICATION. NO FLOWS FROM REGULATED WATERWAYS ARE INTENDED TO BE CONVEYED WITHIN THESE BMPs.
- DURING THE CONSTRUCTION PHASE, IF SHALLOW BEDROCK IS PRESENT, THEN THE PIPELINE WILL BE INSTALLED THROUGH THE WATERBODY WITH A MINIMUM OF 2 FOOT OF COVER, AS THE REQUIRED 5 FOOT OF MINIMUM COVER WILL NOT BE FEASIBLE.
- EROSION CONTROL BLANKETS SHALL BE INSTALLED ON SLOPES 3:1 OR GREATER, WITHIN 50 FEET OF A NON-HQ/EV WETLAND OR STREAM, AND WITHIN 100 FEET OF A HQ/EV STREAM OR WETLAND. REFER TO SHADED SECTIONS OF PROFILE SLOPE BAND FOR APPROXIMATE LOCATION OF EROSION CONTROL BLANKET AREAS.
- ACCESS ROAD AND FACILITY RCES SHOWN FOR COORDINATION PURPOSES. SEE ACCESS ROAD AND FACILITY PLAN SETS FOR ADDITIONAL INFORMATION.

REVISIONS

NO.	DATE	BY	DESCRIPTION	W.O. NO.	CHK.	APP.
0	08/28/2015	BL	ISSUED FOR PADEP SUBMITTAL	W01161481	BLK	A.B.
1	12/02/2015	BL	ISSUED FOR PADEP RESUBMITTAL	W01161481	BLK	A.B.
2	Oct. 2016	BL	PADEP TECHNICAL DEFICIENCY RESPONSE #1	W01161481	BLK	A.B.
3	April 2017	BL	PADEP TECHNICAL DEFICIENCY RESPONSE #2	W01161481	BLK	A.B.
4	Aug. 2017	BL	PADEP TECHNICAL DEFICIENCY RESPONSE #3	W01161481	BLK	A.B.

LAND USE LEGEND

5 - OPEN WATER	41 - DECIDUOUS FOREST LAND
11 - RESIDENTIAL	42 - EVERGREEN FOREST LAND
14 - TRANSPORTATION, UTILITY, AND COMMUNICATIONS	43 - MIXED FOREST LAND
15 - INDUSTRIAL AND COMMERCIAL	44 - FORESTED/CULTIVATED TIMBER OR FOREST LAND
21 - CROPLAND AND PASTURE	55 - RIVERS
22 - ORCHARDS, GROVES, VINEYARDS, NURSERIES	74 - BARE EXPOSED ROCK
25 - HAY FIELDS	75 - STRIP MINES, QUARRIES, AND GRAVEL
32 - SHRUB AND BRUSH RANGELAND	99 - HERBACEOUS OPENINGS

TRANSCONTINENTAL GAS PIPE LINE COMPANY, LLC
 SOIL EROSION & SEDIMENT CONTROL PLAN / SITE RESTORATION PLAN
 ATLANTIC SUNRISE PROJECT
 PROPOSED 30" CENTRAL PENN LINE NORTH
 M.P. 4.55 TO M.P. 5.68
 COLUMBIA COUNTY, PENNSYLVANIA

WILLIAMS

DRAWN BY: JMD DATE: 11/2014 ISSUED FOR BID: SCALE: AS NOTED
 CHECKED BY: BDK DATE: 03/13/2015 REVISION: 3
 APPROVED BY: A.B. DATE: 03/13/2015 DRAWING NUMBER: 24-1601-70-28-A/1683_3 SHEET 5
 W.O. W01161481

Drawn By & Date/Time: esb:ebly Jul 28, 2017 - 5:34pm
 Drawing Location & Name: G:\080514\140140905\010-CPU\N\PL_P1404909(10)_ES_C01SHEETS-001-C01.dwg