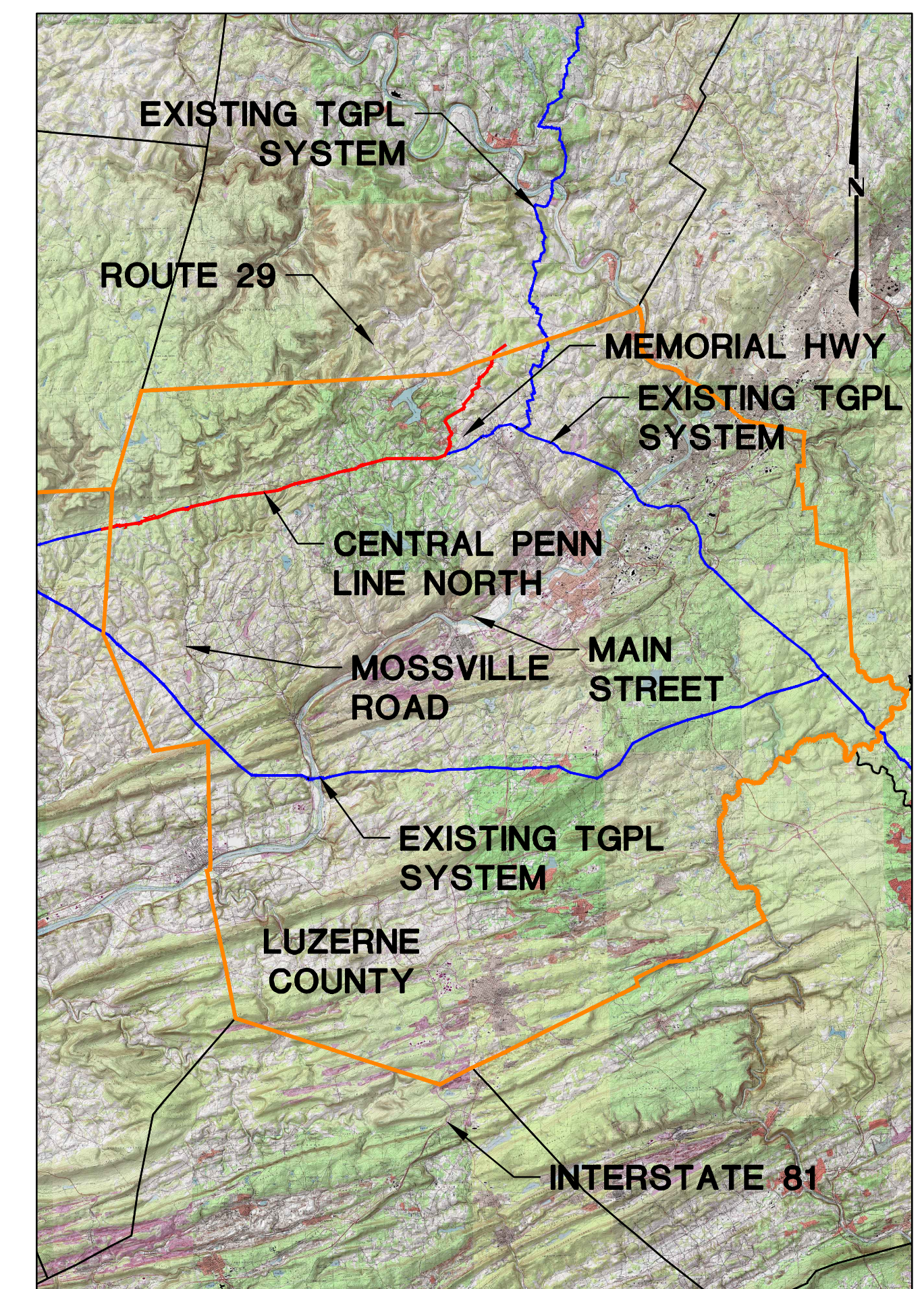


FAIRMOUNT TOWNSHIP
LUZERNE COUNTY, PENNSYLVANIA

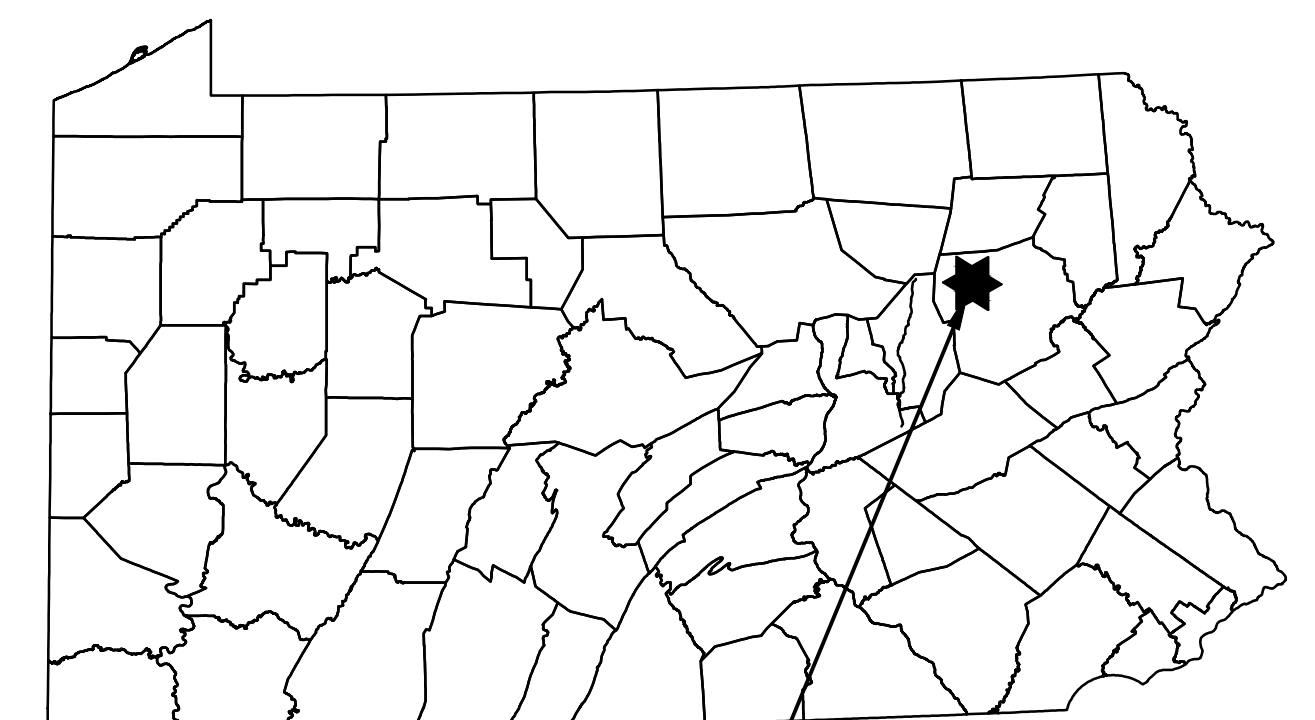
ROAD NAME & TYPE	DRAWING NO.	SHEET NO.	DRAWING NAME
GENERAL OVERALL	24-1601-70-28-A/1683_3-AR-LU	1 of 3	COVER SHEET
		2 of 3	LOCATION MAP & ACCESS ROAD INDEX
		3 of 3	PCSM NOTES
AR-LU-007.1 Proposed Permanent	24-1601-70-28-A/1683_3-AR-LU-007.1	1 of 1	ACCESS ROADS - POST CONSTRUCTION STORMWATER MANAGEMENT PLAN

ABBREVIATIONS			
ABACT	ANTIDEGRADATION BEST AVAILABLE COMBINATION OF TECHNOLOGIES	LOD	LIMIT OF DISTURBANCE
APPROX.	APPROXIMATE	MLV	MIGRATORY FISHES
AR	ACCESS ROAD	N/A	NOT APPLICABLE
A.C.	ACRE/ACRES	PADEP	PENNSYLVANIA DEPARTMENT OF ENVIRONMENTAL PROTECTION
BMP	BEST MANAGEMENT PRACTICES		
CWF	COLDWATER FISHES	PR	PROPOSED
D	DEPTH	R	RIGHT
D.I.P.	DUCTILE IRON PIPE	RCP	REINFORCED CONCRETE PIPE
ESCGP-2	EROSION AND SEDIMENT CONTROL	STA	STATION
	GENERAL PERMIT - 2	TGPL	TRANSCONTINENTAL GAS PIPE LINE
EV	EXCEPTIONAL VALUE	TSF	TROUT STOCKED FISHERY
EX	EXISTING	TYP.	TYPICAL
GTD	GRADE TO DRAIN	UNK	UNKNOWN
H	HORIZONTAL	UNT	UNNAMED TRIBUTARY
HQ	HIGH QUALITY	V	VERTICAL
INV	INVERT	W	WIDTH
L	LENGTH	WWE	WARMWATER FISHES



USGS YOUNG WOMAN'S CREEK, HARVEYS LAKE, RED ROCK, AND PITTSFORD QUADRANGLE

SCALE: 1"=30,000'



PROJECT LOCATION

SOIL TYPES AND LIMITATIONS																	
MAP UNIT NAME	MAP UNIT DESIGNATION	CUTBANKS CAVE	CORROSIVE TO CONCRETE/STEEL	DROUGHTY	EASILY ERODIBLE	FLOODING	DEPTH TO SATURATED ZONE/ SEASONAL HIGH WATER TABLE	HYDRIC/ HYDRIC INCLUSIONS	LOW STRENGTH/ LANDSLIDE PRONE	SLOW PERCOLATION	PIPING	POOR SOURCE OF TOPSOIL	FROST ACTION	SHRINK - SWELL	POTENTIAL SINKHOLE	PONDING	WATERLOG
LcB	LACKAWANNA VERY STONY LOAM, 0 TO 12 PERCENT SLOPES	X	C	X			X	X	X			X	X				
MsB	MORRIS VERY STONY SILT LOAM, 0 TO 8 PERCENT SLOPES	X	C/S	X			X	X	X	X		X	X				
OpD	OQUAGA AND LORDSTOWN EXTREMELY STONY SILT LOAMS, 8 TO 25 PERCENT SLOPES	X	C	X	X			X		X							
WmB	WELL SBORO VERY STONY SILT LOAM, 3 TO 8 PERCENT SLOPES	X	C/S	X	X		X	X	X	X	X		X				

X	LEGEND	
X	X	APPLIES TO SOIL
	S	CORROSIVE TO STEEL
	C	CORROSIVE TO CONCRETE
X	C/S	CORROSIVE TO STEEL AND CONCRETE



PENNSYLVANIA ACT 287 (1974)
AS AMENDED BY PENNSYLVANIA
ACT 199 (2004) REQUIRES NO
LESS THAN THREE (3) WORKING
DAYS AND NO MORE THAN (10)
WORKING DAYS NOTICE TO
UTILITIES BEFORE YOU EXCAVATE
DRILL, BLAST OR DEMOLISH.

ENGINEER OF RECORD
BL COMPANIES
4242 CARLISLE PIKE, SUITE 260
CAMP HILL, PA 17011
P:717-651-9850
F:717-651-9858

[illegible]



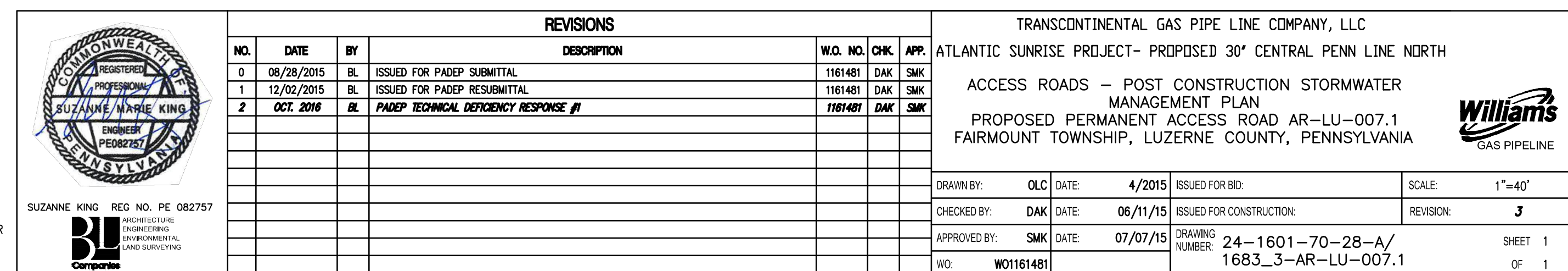
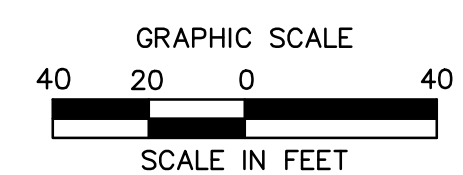
LIMIT OF DISTURBANCE: ACCESS ROAD VALVE WITHIN PIPELINE ROW TOTAL	0.00 AC. <u>0.75 AC.</u> 0.75 AC.
<i>LOD AREA WITHIN FLOODWAY/FLOODPLAIN</i>	0.00 AC.
AREA OF RIPARIAN FOREST BUFFER	0.00 AC.
AREA OF MINIMUM DISTURBANCE/REDUCED GRADING	0.00 AC.
STORMWATER MANAGEMENT AREA	0.75 AC.
AREA CONTROLLED BY BMPs	0.28 AC.

SITE SOIL TYPES

SEE COVER SHEET FOR SOIL TYPE LIMITATIONS

RECEIVING WATERS

UNT TO MAPLE RUN, HQ-CWF, MF
CHAPTER 303(D) IMPAIRMENT: NONE



NOTE:
SEE PCSM NOTES SHEET 3 OF 3 FOR
EXISTING AND PROPOSED FEATURES
LEGEND