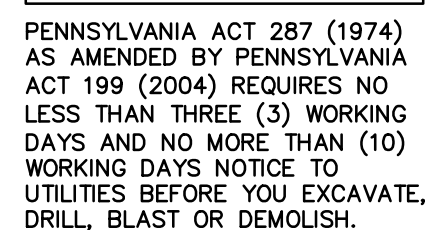
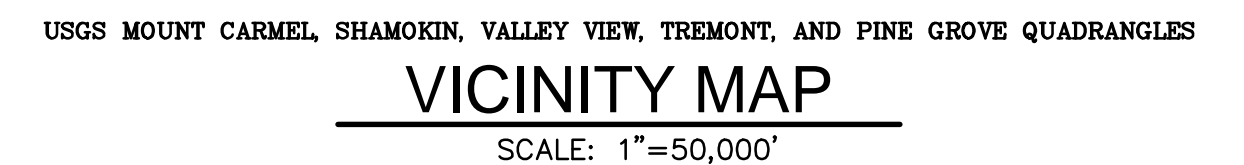


ELDRED AND PINE GROVE TOWNSHIPS
SCHUYLKILL COUNTY, PENNSYLVANIA

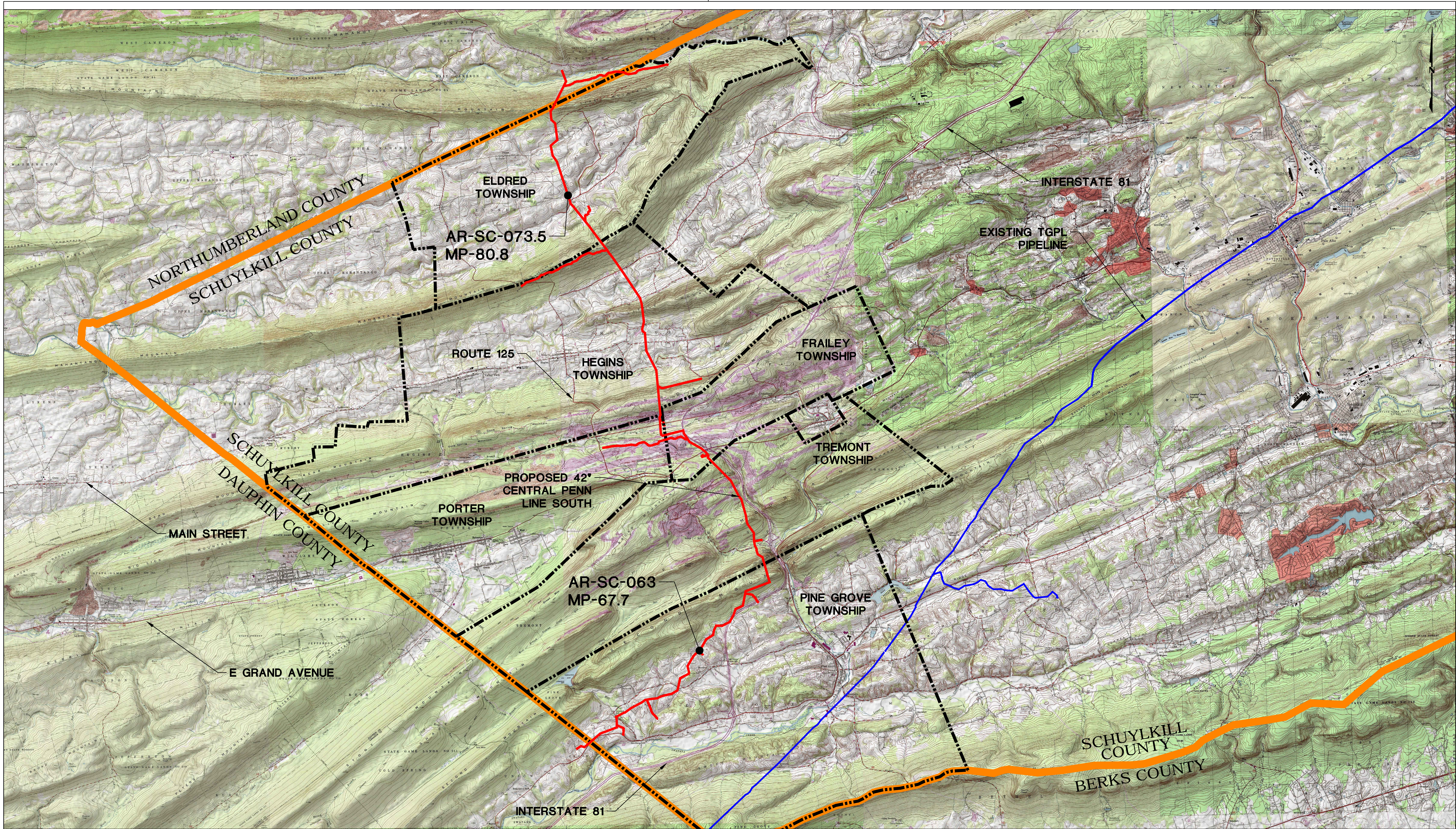


ABBREVIATIONS			
ABACT	ANTIDEGRADATION BEST AVAILABLE	LOD	LIMIT OF DISTURBANCE
	COMBINATION OF TECHNOLOGIES	MF	MIGRATORY FISHES
APPROX.	APPROXIMATE	MLV	MAIN LINE VALVE
AR	ACCESS ROAD	N/A	NOT APPLICABLE
AC.	ACRE/ACRES	PADEP	PENNSYLVANIA DEPARTMENT OF
BMP	BEST MANAGEMENT PRACTICES		ENVIRONMENTAL PROTECTION
CWF	COLDWATER FISHES	PR	PROPOSED
D	DEPTH	R	RIGHT
D.I.P.	DUCTILE IRON PIPE	RCP	REINFORCED CONCRETE PIPE
ESCGP-2	EROSION AND SEDIMENT CONTROL	STA	STATION
	GENERAL PERMIT - 2	TGPL	TRANSCONTINENTAL GAS PIPE LINE
EV	EXCEPTIONAL VALUE	TSF	TROUT STOCKED FISHERY
EX	EXISTING	TYP.	TYPICAL
GTD	GRADE TO DRAIN	UNK	UNKNOWN
H	HORIZONTAL	UNT	UNNAMED TRIBUTARY
HQ	HIGH QUALITY	V	VERTICAL
INV	INVERT	W	WIDTH
L	LENGTH, LEFT	WWF	WARMWATER FISHES

LEGEND	
X	APPLIES TO SOIL
S	CORROSIVE TO STEEL
C	CORROSIVE TO CONCRETE
C/S	CORROSIVE TO STEEL AND CONCRETE

Drawn By & Date/Time: Norwooduser Nov 12, 2016 - 6:48pm
Drawing Location & Name: G:\JOBS14\14C\14C4909\DWG\020-CPLS\AR_CV14C4909(20)_SCH.dwg

Drawn By & Date/Time: Norwooduser Nov 12, 2016 - 6:49pm
Drawing Location & Name: G:\0851\14\1404909.DWG\020-CPLS\VAR_CV14C4909(0).SCH.dwg



USGS MOUNT CARMEL, SHAMOKIN, VALLEY VIEW, TREMONT, AND PINE GROVE QUADRANGLES

LEGEND

- TOWNSHIP LINE
- COUNTY LINE
- PROPOSED 42" CENTRAL PENN LINE SOUTH
- EXISTING LEIDY/ TGPL PIPELINE



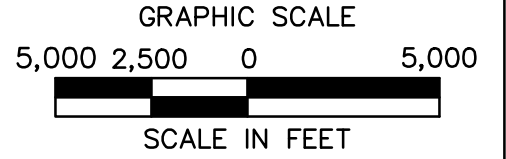
PENNSYLVANIA ACT 287 (1974)
AS AMENDED BY PENNSYLVANIA
ACT 199 (2004) REQUIRES NO
LESS THAN THREE (3) WORKING
DAYS AND NO MORE THAN (10)
WORKING DAYS NOTICE TO
UTILITIES BEFORE YOU EXCAVATE,
DRILL, BLAST OR DEMOLISH.



SUZANNE KING REG. NO. PE 082757
BU Companies

REVISIONS							
NO.	DATE	BY	DESCRIPTION	W.D. NO.	CHK.	APP.	
0	OCT. 2016	BL	PADEP TECHNICAL DEFICIENCY RESPONSE #1	1161503	DAK	SMK	

TRANSCONTINENTAL GAS PIPE LINE COMPANY, LLC				SCALE	
ATLANTIC SUNRISE PROJECT- PROPOSED 42" CENTRAL PENN LINE SOUTH				0	
POST CONSTRUCTION STORMWATER MANAGEMENT PLAN				REVISION:	
ACCESS ROADS				0	
SCHUYLKILL COUNTY, PENNSYLVANIA				SHEET 2	
LOCATION MAP & ACCESS ROAD INDEX				OF 3	
DRAWN BY:	OLC/MS	DATE:	4/2015	ISSUED FOR BID:	
CHECKED BY:	DAK	DATE:	06/12/15	ISSUED FOR CONSTRUCTION:	
APPROVED BY:	SMK	DATE:	07/07/15	DRAWING NUMBER:	
W.D.:	W01161503	24-1600-70-28-A/LL113_9-AR-SC			



DRAWN BY: OLC/JMS	DATE: 4/2015	ISSUED FOR BID:	SCALE: 1"=40'
CHECKED BY: DAK	DATE: 06/12/15	ISSUED FOR CONSTRUCTION:	REVISION: 2
APPROVED BY: SMK	DATE: 07/07/15	DRAWING NUMBER: 24-1600-70-28-A/ LL113_9-AR-SC-063	SHEET 1
WO: W01161503			OF 1

