

2525 Green Tech Drive, Suite B,
 State College, PA 16803
 Tele: 814.689.1650 Fax: 814.689.1557

TRANSCONTINENTAL GAS PIPE LINE COMPANY, LLC
LEIDY SOUTH PROJECT

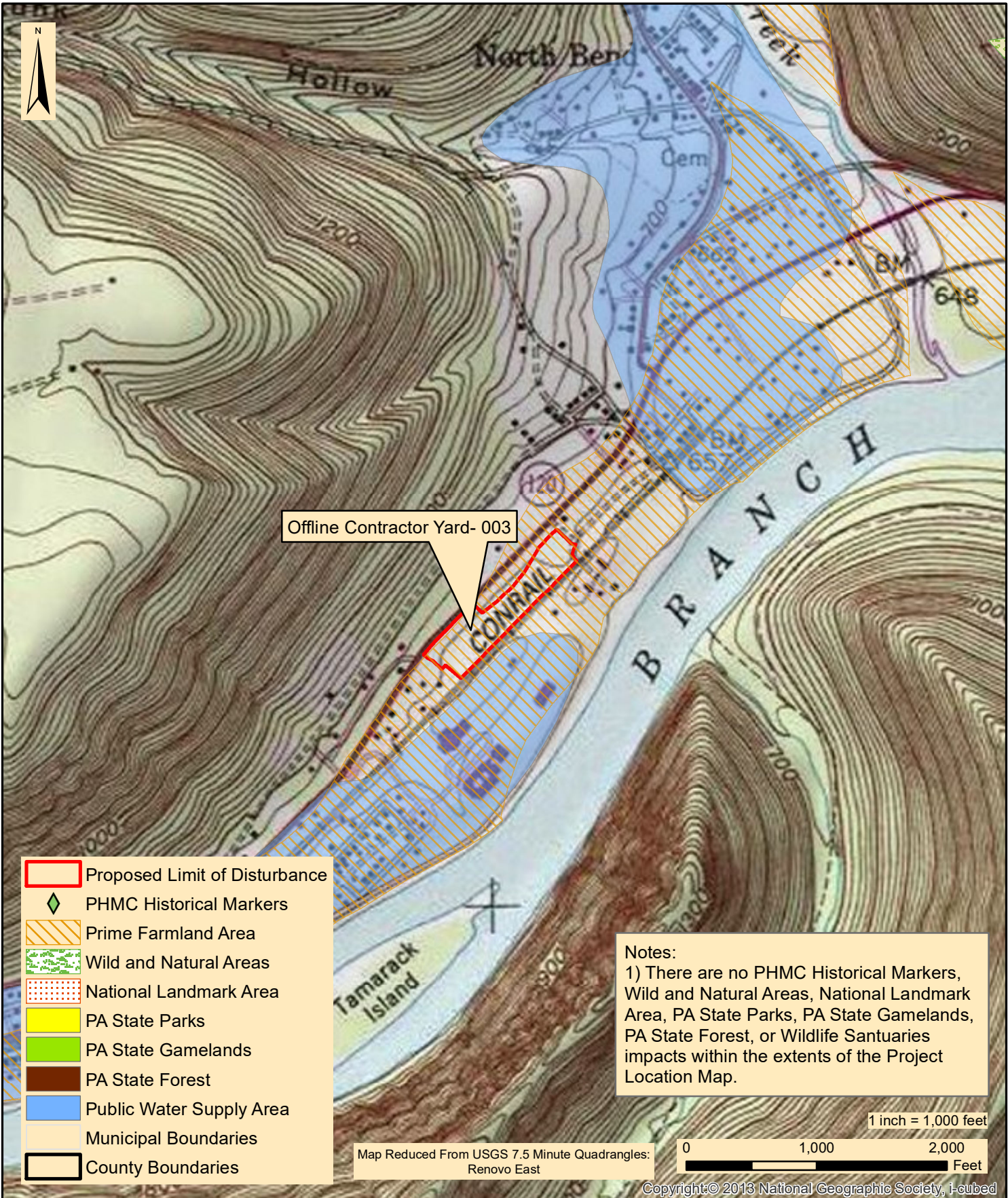
LEIDY LINE D 36" HENSEL REPLACEMENT
PROJECT LOCATION MAP

LEIDY & CHAPMAN TOWNSHIP

CLINTON COUNTY

PENNSYLVANIA

Date:	8/9/2019
WHM DRAWING NUMBER:	WILLIAMS202B001
Drawn By:	FTN
Figure Number:	1-1



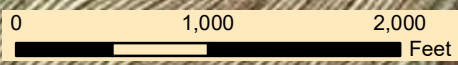
- Proposed Limit of Disturbance
- ◆ PHMC Historical Markers
- Prime Farmland Area
- Wild and Natural Areas
- National Landmark Area
- PA State Parks
- PA State Gamelands
- PA State Forest
- Public Water Supply Area
- Municipal Boundaries
- County Boundaries

Offline Contractor Yard- 003

Notes:
 1) There are no PHMC Historical Markers, Wild and Natural Areas, National Landmark Area, PA State Parks, PA State Gamelands, PA State Forest, or Wildlife Sanctuaries impacts within the extents of the Project Location Map.

1 inch = 1,000 feet

Map Reduced From USGS 7.5 Minute Quadrangles:
 Renovo East



Copyright © 2013 National Geographic Society, i-cubed



designs, permits, resolutions | consulting, inc.
 2525 Green Tech Drive, Suite B,
 State College, PA 16803
 Tele: 814.689.1650 Fax: 814.689.1557

TRANSCONTINENTAL GAS PIPE LINE COMPANY, LLC
LEIDY SOUTH PROJECT

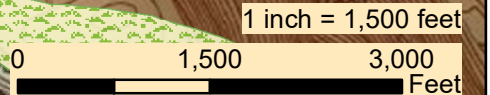
**LEIDY LINE D 36" HENSEL REPLACEMENT
 PROJECT LOCATION MAP**

CHAPMAN TOWNSHIP CLINTON COUNTY PENNSYLVANIA

Date:	8/9/2019
WHM Drawing Number:	WILLIAMS200A001-1
Drawn By:	FTN
Figure Number:	1-2



Notes:
 1) There are no PHMC Historical Markers, National Landmark Area, PA State Parks, PA State Gamelands, or Wildlife Sanctuaries impacts within the extents of the Project Location Map.



Map Reduced From USGS 7.5 Minute Quadrangles:
 Tamarack, Renovo West, Young Woman's Creek, Renovo East

Copyright © 2013 National Geographic Society, Inc.



2525 Green Tech Drive, Suite B,
 State College, PA 16803
 Tele: 814.689.1650 Fax: 814.689.1557

TRANSCONTINENTAL GAS PIPE LINE COMPANY, LLC
LEIDY SOUTH PROJECT

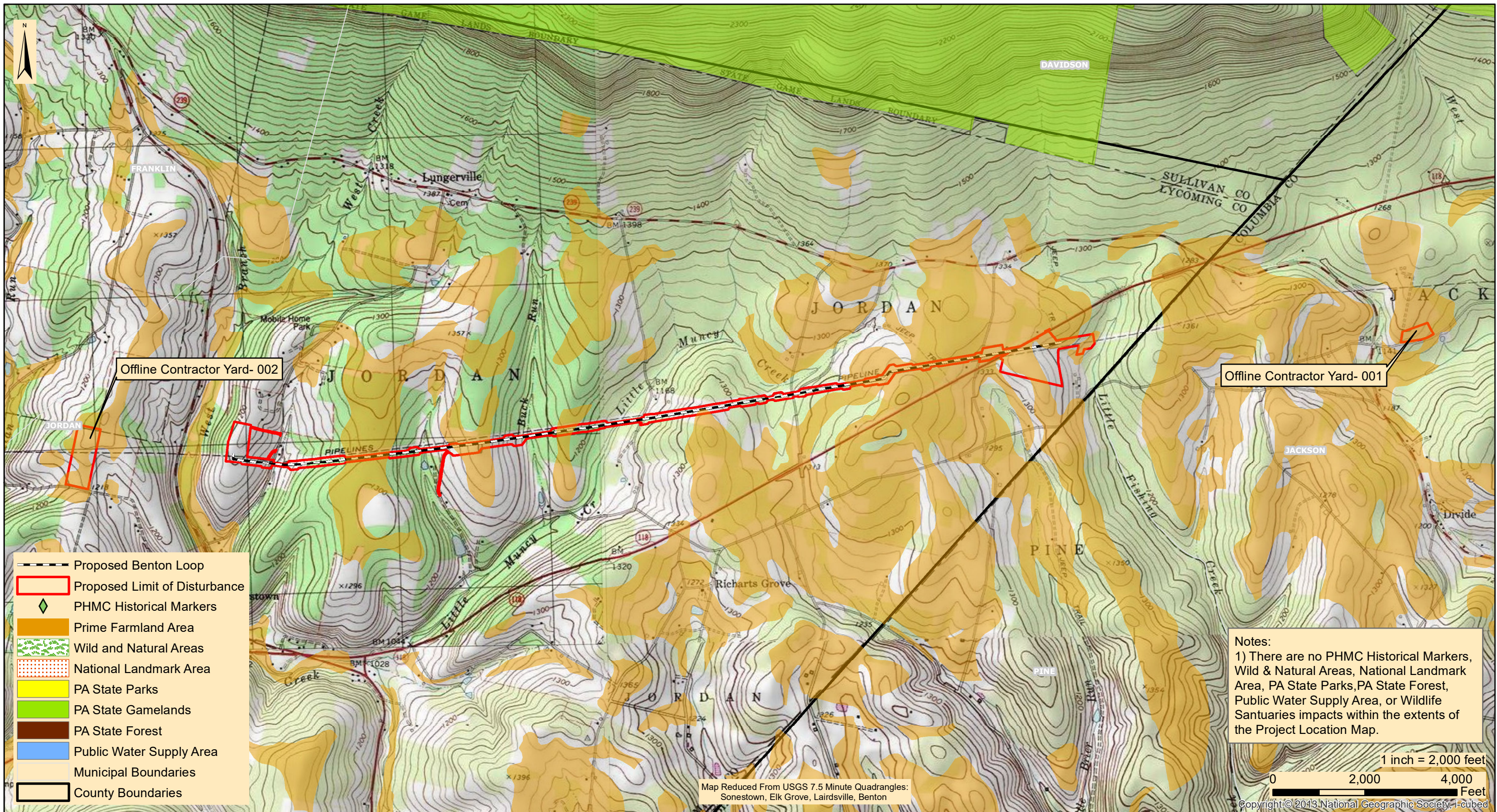
LEIDY LINE D 36" HILLTOP LOOP
PROJECT LOCATION MAP

CHAPMAN TOWNSHIP

CLINTON COUNTY

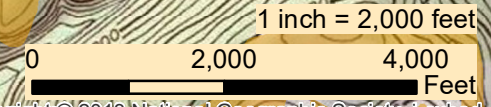
PENNSYLVANIA

Date:	8/9/2019
WHM DRAWING NUMBER:	WILLIAMS201B002
Drawn By:	FTN
Figure Number:	2-1



- Proposed Benton Loop
- Proposed Limit of Disturbance
- PHMC Historical Markers
- Prime Farmland Area
- Wild and Natural Areas
- National Landmark Area
- PA State Parks
- PA State Gamelands
- PA State Forest
- Public Water Supply Area
- Municipal Boundaries
- County Boundaries

Notes:
 1) There are no PHMC Historical Markers, Wild & Natural Areas, National Landmark Area, PA State Parks, PA State Forest, Public Water Supply Area, or Wildlife Sanctuaries impacts within the extents of the Project Location Map.



Map Reduced From USGS 7.5 Minute Quadrangles:
 Sonestown, Elk Grove, Lairdsville, Benton



2525 Green Tech Drive, Suite B,
 State College, PA 16803
 Tele: 814.689.1650 Fax: 814.689.1557

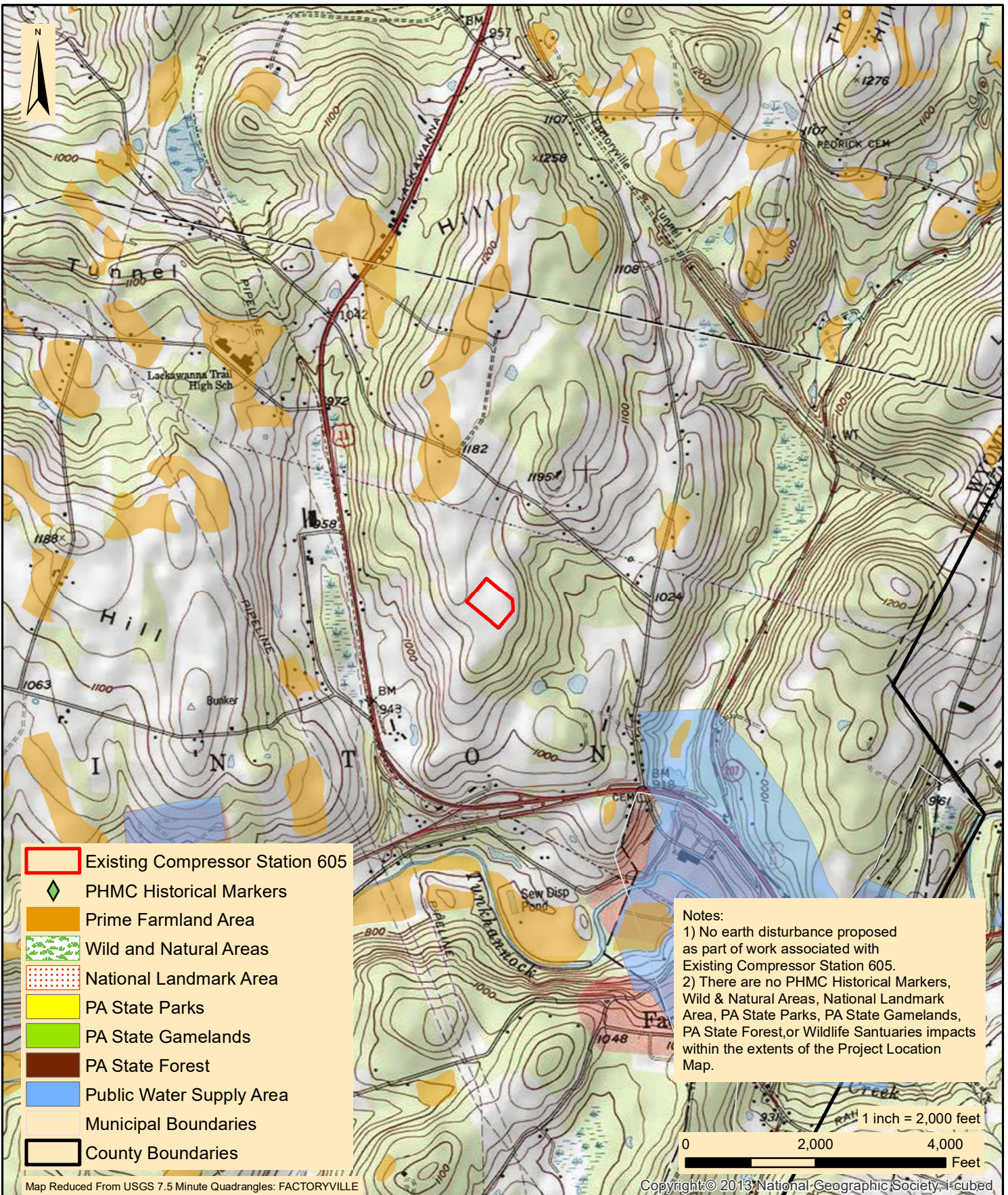
TRANSCONTINENTAL GAS PIPE LINE COMPANY, LLC
LEIDY SOUTH PROJECT

LEIDY LINE D 42" BENTON LOOP
PROJECT LOCATION MAP

LYCOMING & COLUMBIA COUNTIES

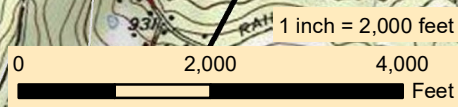
PENNSYLVANIA

Date:	8/9/2019
WHM DRAWING NUMBER:	WILLIAMS202B003
Drawn By:	FTN
Figure Number:	3



- Existing Compressor Station 605
- ◆ PHMC Historical Markers
- Prime Farmland Area
- Wild and Natural Areas
- National Landmark Area
- PA State Parks
- PA State Gamelands
- PA State Forest
- Public Water Supply Area
- Municipal Boundaries
- County Boundaries

Notes:
 1) No earth disturbance proposed as part of work associated with Existing Compressor Station 605.
 2) There are no PHMC Historical Markers, Wild & Natural Areas, National Landmark Area, PA State Parks, PA State Gamelands, PA State Forest, or Wildlife Sanctuaries impacts within the extents of the Project Location Map.



Map Reduced From USGS 7.5 Minute Quadrangles: FACTORYVILLE

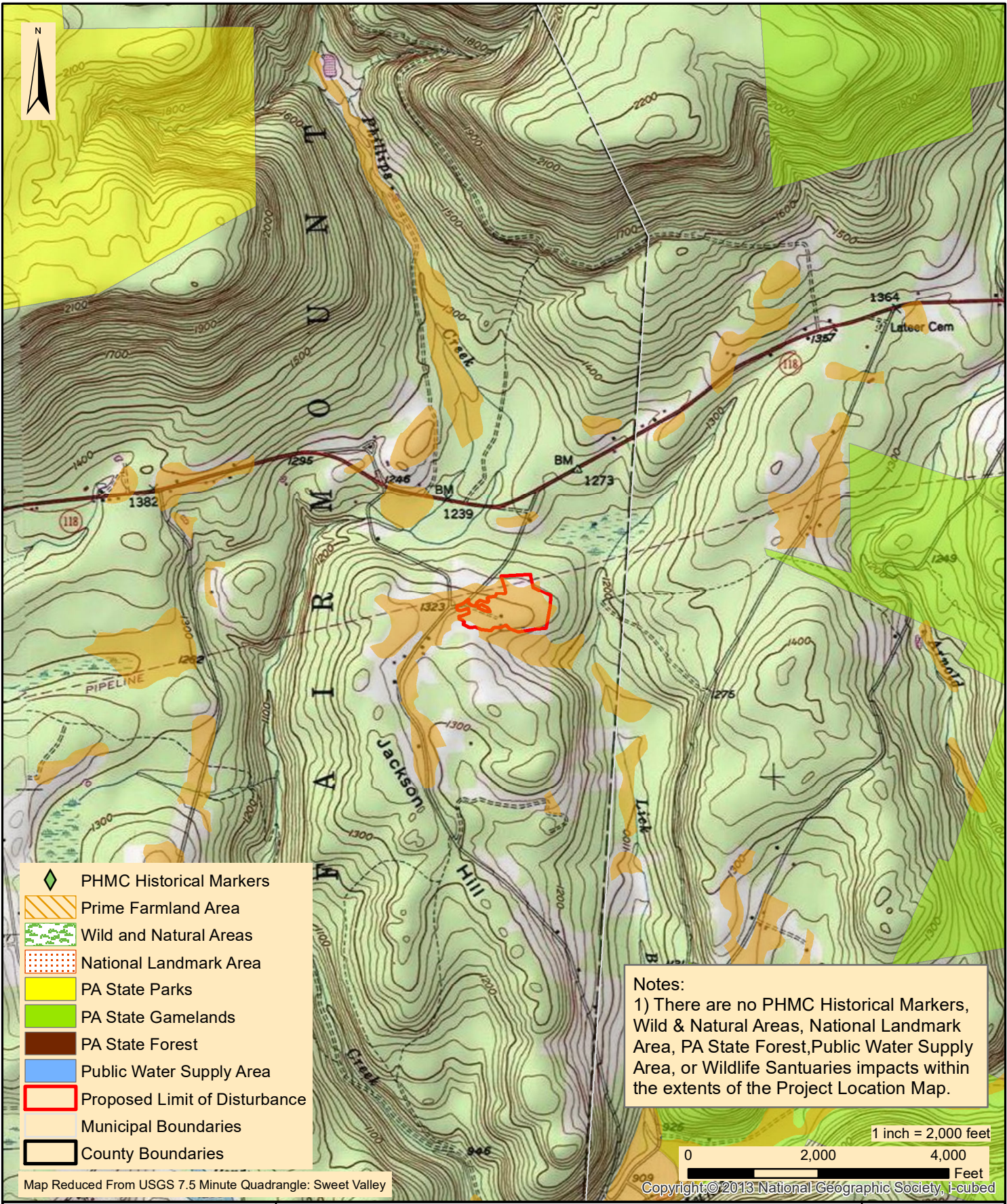
Copyright © 2013, National Geographic Society, i-cubed

designs, permits, resolutions | **consulting, inc.**
 2525 Green Tech Drive, Suite B,
 State College, PA 16803
 Tele: 814.689.1650 Fax: 814.689.1557

TRANSCONTINENTAL GAS PIPE LINE COMPANY, LLC
LEIDY SOUTH PROJECT

EXISTING COMPRESSOR STATION 605
PROJECT LOCATION MAP

CLINTON TOWNSHIP	WYOMING COUNTY	PENNSYLVANIA
Date:		8/9/2019
WHM Drawing Number:		WILLIAMS203A001
Drawn By:		FTN
Figure Number:		4



Notes:
 1) There are no PHMC Historical Markers, Wild & Natural Areas, National Landmark Area, PA State Forest, Public Water Supply Area, or Wildlife Sanctuaries impacts within the extents of the Project Location Map.

-  PHMC Historical Markers
-  Prime Farmland Area
-  Wild and Natural Areas
-  National Landmark Area
-  PA State Parks
-  PA State Gamelands
-  PA State Forest
-  Public Water Supply Area
-  Proposed Limit of Disturbance
-  Municipal Boundaries
-  County Boundaries

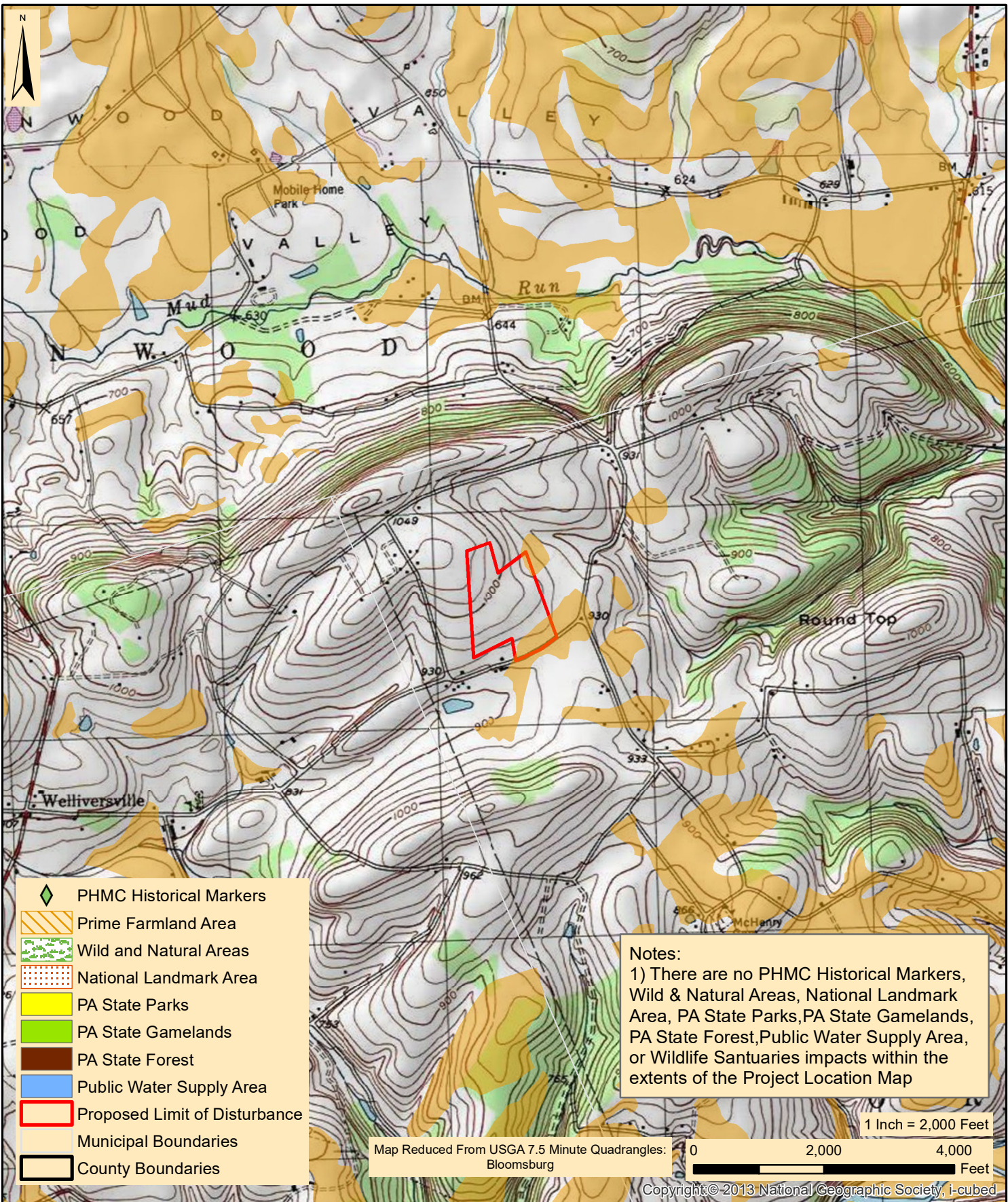
Map Reduced From USGS 7.5 Minute Quadrangle: Sweet Valley

1 inch = 2,000 feet
 0 2,000 4,000 Feet
 Copyright © 2013 National Geographic Society, i-cubed

WHM
 designs, permits, resolutions | consulting, inc.
 2525 Green Tech Drive, Suite B,
 State College, PA 16803
 Tele: 814.689.1650 Fax: 814.689.1557

TRANSCONTINENTAL GAS PIPE LINE COMPANY, LLC
LEIDY SOUTH PROJECT
NEW COMPRESSOR STATION 607
PROJECT LOCATION MAP

Date: 8/9/2019
 WHM Drawing Number: WILLIAMS204A001
 Drawn By: FTN
 Figure Number: 5



WHM
 designs, permits, resolutions
consulting, inc.
 2525 Green Tech Drive, Suite B,
 State College, PA 16803
 Tele: 814.689.1650 Fax: 814.689.1557

TRANSCONTINENTAL GAS PIPE LINE COMPANY, LLC
LEIDY SOUTH PROJECT
EXISTING COMPRESSOR STATION 610
PROJECT LOCATION MAP

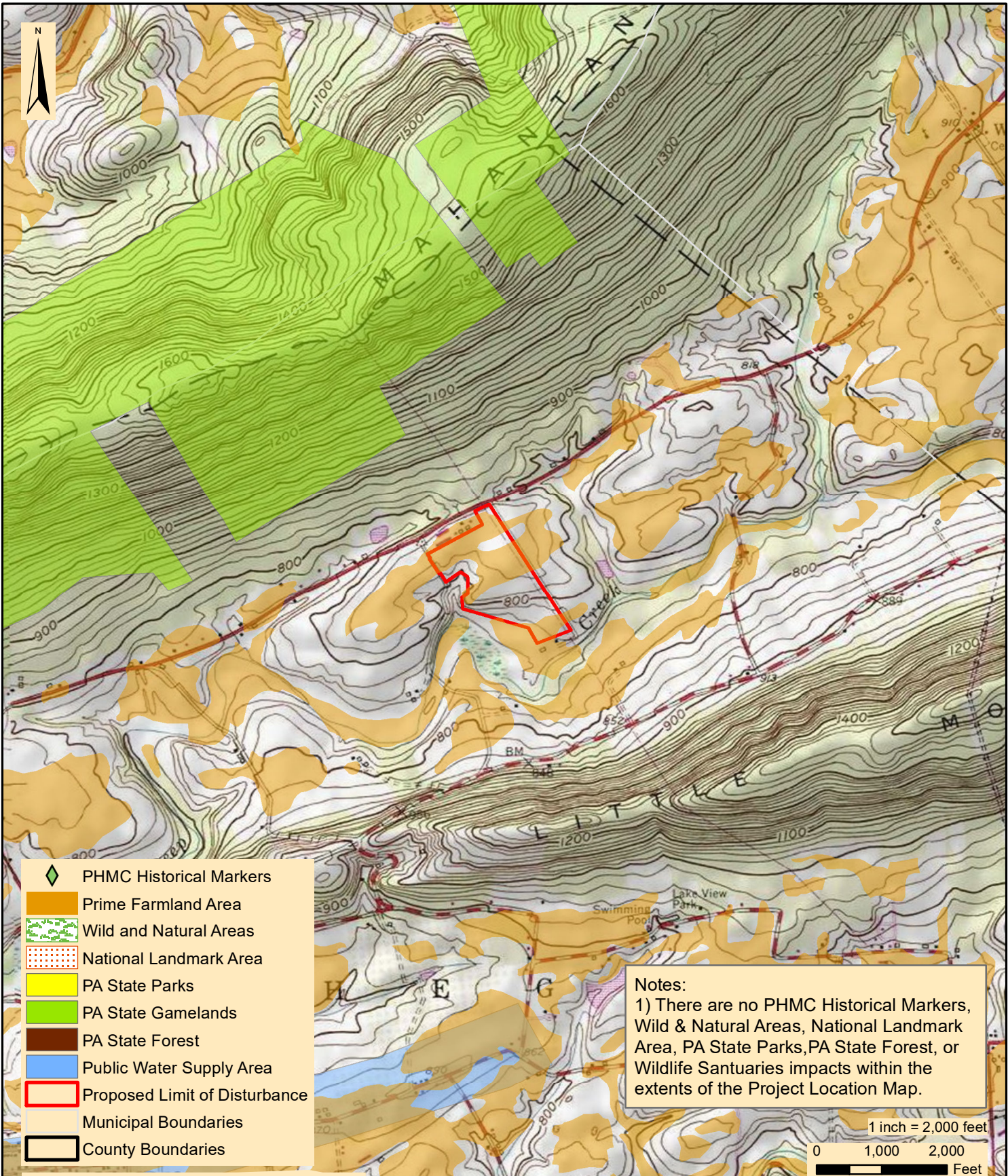
ORANGE TOWNSHIP

COLUMBIA COUNTY

PENNSYLVANIA

Date: 8/9/2019
 WHM Drawing Number: WILLIAMS205A001
 Drawn By: FTN
 Figure Number: 6

Copyright © 2013 National Geographic Society, I-cubed



-  PHMC Historical Markers
-  Prime Farmland Area
-  Wild and Natural Areas
-  National Landmark Area
-  PA State Parks
-  PA State Gamelands
-  PA State Forest
-  Public Water Supply Area
-  Proposed Limit of Disturbance
-  Municipal Boundaries
-  County Boundaries

Notes:
 1) There are no PHMC Historical Markers, Wild & Natural Areas, National Landmark Area, PA State Parks, PA State Forest, or Wildlife Sanctuaries impacts within the extents of the Project Location Map.

1 inch = 2,000 feet
 0 1,000 2,000
 Feet

Map Reduced From USGS 7.5 Minute Quadrangle: Tremont

Copyright © 2013 National Geographic Society, i-cubed



designs, permits, resolutions consulting, inc.
 2525 Green Tech Drive, Suite B,
 State College, PA 16803
 Tele: 814.689.1650 Fax: 814.689.1557

TRANSCONTINENTAL GAS PIPE LINE COMPANY, LLC
LEIDY SOUTH PROJECT
NEW COMPRESSOR STATION 620
PROJECT LOCATION MAP

HEGINS TOWNSHIP SCHUYLKILL COUNTY PENNSYLVANIA

Date:	8/9/2019
WHM Drawing Number:	WILLIAMS206A001
Drawn By:	FTN
Figure Number:	7