

Legend

- Proposed 20-inch and 16-inch Pipeline Corridor
- Permanent Access Road
- Temporary Access Road
- Pump Station LOD
- County Boundary
- Local Parks
- State Parks
- State Forest
- State Gamelands
- Wild Natural Areas
- USACE Property
- USDA Soils-Prime Farmlands
- Appalachian National Scenic Trail
- Trails

Sheet Identifier

0 1,000 2,000
1 inch = 2,000 feet

North Arrow

**Pennsylvania Pipeline Project:
Environmental Assessment
Enclosure B - Resource Identification
Sheet 61**

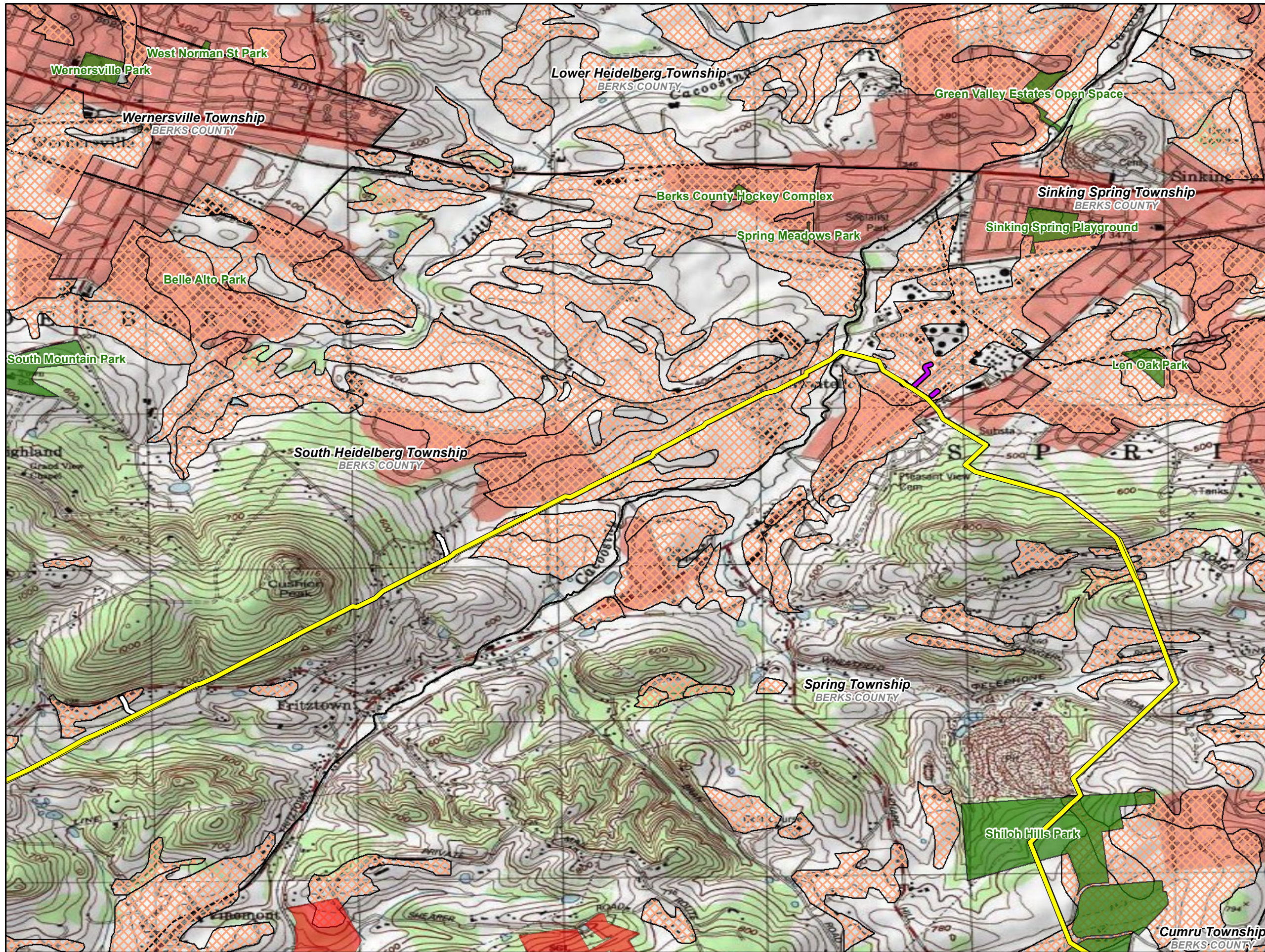
Prepared By: TETRA TECH

Prepared for: Sunoco Logistics

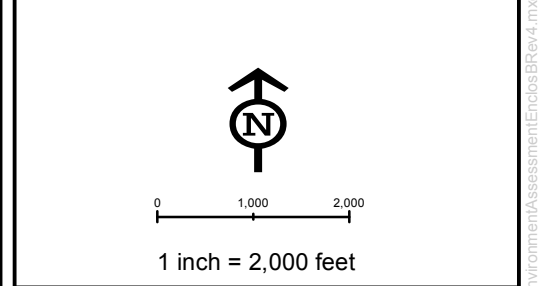
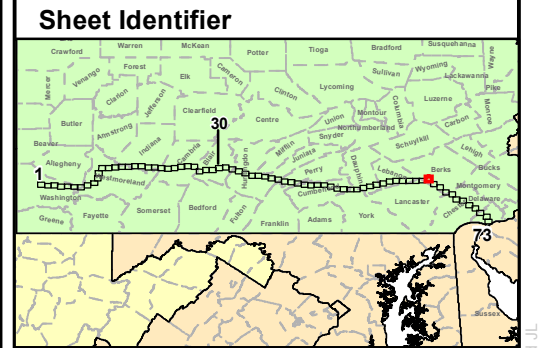
Base Map: ESRI ArcGIS Online
Coordinate System: NAD 83 UTM 17N

Date: 10/2016

P:\GIS\projects\112\059558-PPP\Map\XDP\Permits\PPP_Environment\Assessment\EnclosB\Rev4.mxd



- Legend**
- Proposed 20-inch and 16-inch Pipeline Corridor
 - Permanent Access Road
 - Temporary Access Road
 - Pump Station LOD
 - County Boundary
 - Local Parks
 - State Parks
 - State Forest
 - State Gamelands
 - Wild Natural Areas
 - USACE Property
 - USDA Soils-Prime Farmlands
 - Appalachian National Scenic Trail
 - Trails



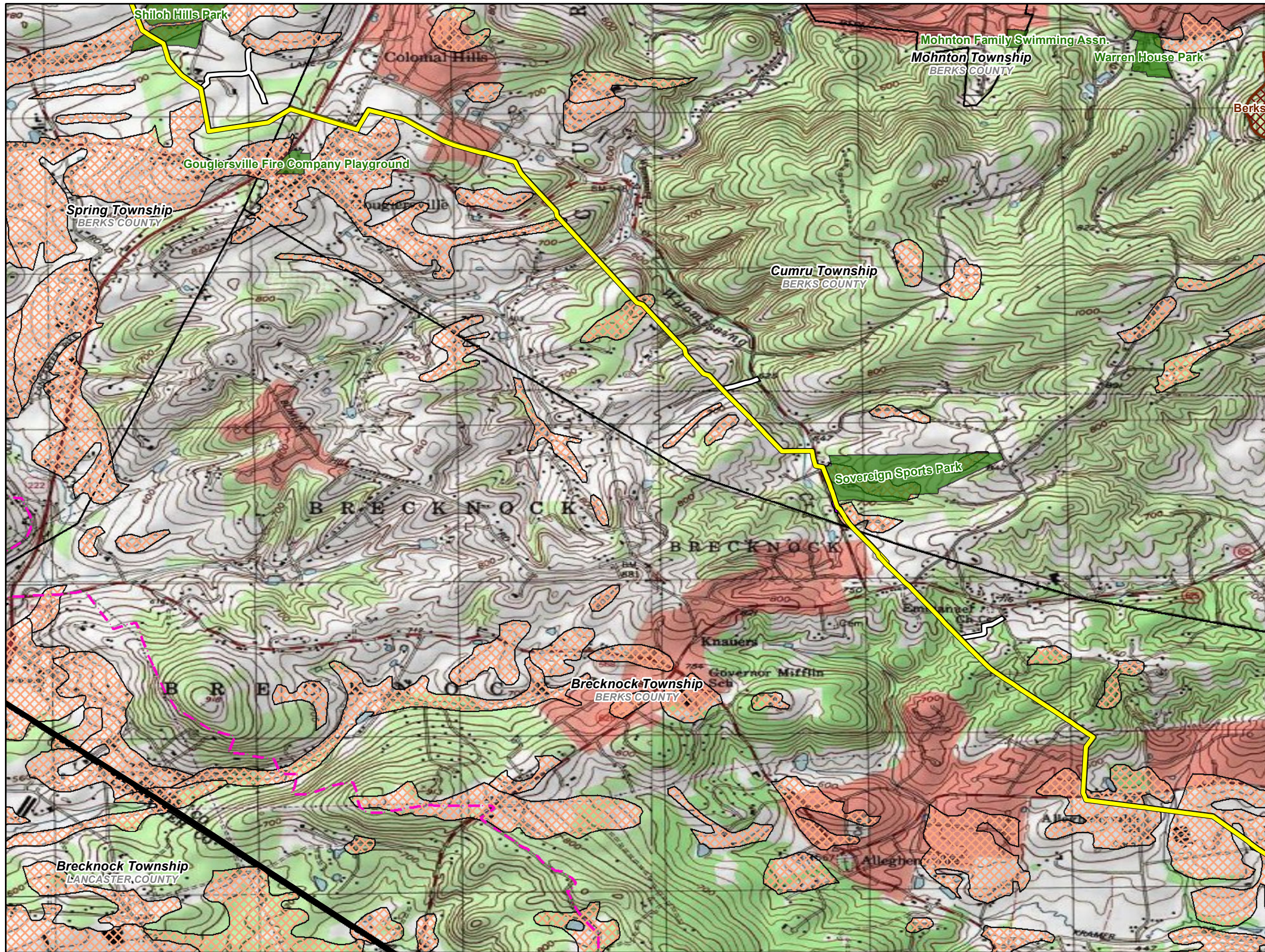
**Pennsylvania Pipeline Project:
Environmental Assessment
Enclosure B - Resource Identification
Sheet 62**

Prepared By: TETRA TECH

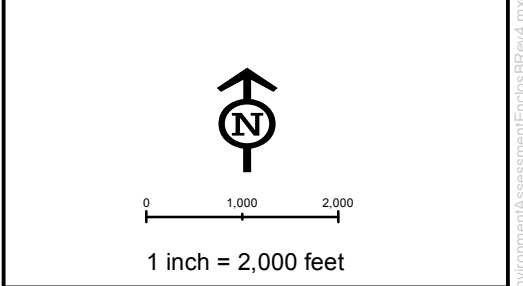
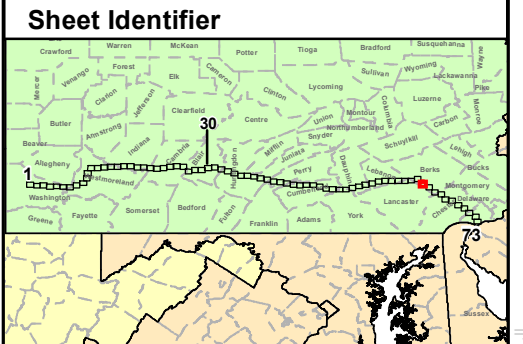
Prepared for: Sunoco Logistics

Base Map: ESRI ArcGIS Online
Coordinate System: NAD 83 UTM 17N

Date:
10/2016



- Legend**
- Proposed 20-inch and 16-inch Pipeline Corridor
 - Permanent Access Road
 - Temporary Access Road
 - Pump Station LOD
 - County Boundary
 - Local Parks
 - State Parks
 - State Forest
 - State Gamelands
 - Wild Natural Areas
 - USACE Property
 - USDA Soils-Prime Farmlands
 - Appalachian National Scenic Trail
 - Trails



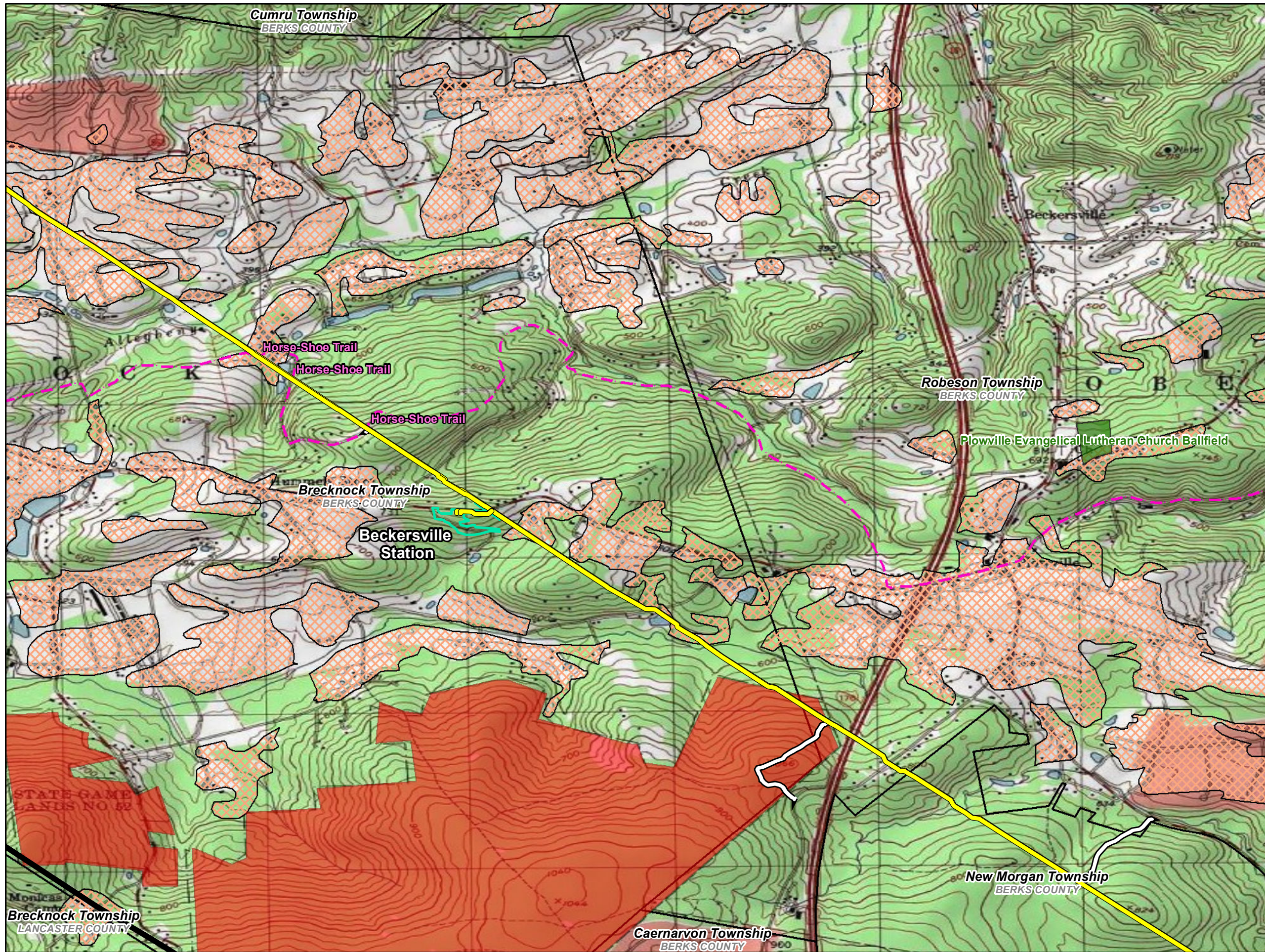
**Pennsylvania Pipeline Project:
Environmental Assessment
Enclosure B - Resource Identification
Sheet 63**

Prepared By: TETRA TECH

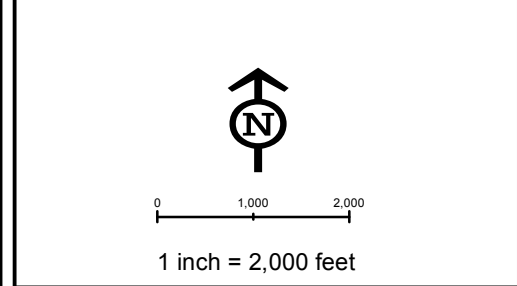
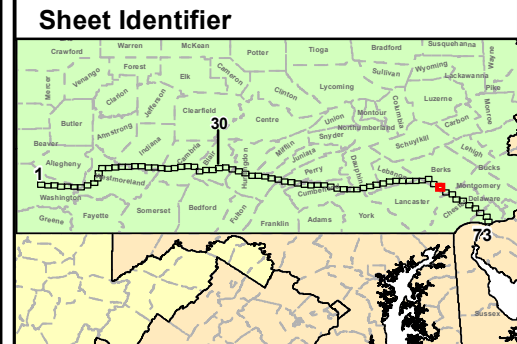
Prepared for: Sunoco Logistics

Base Map: ESRI ArcGIS Online
Coordinate System: NAD 83 UTM 17N
Date: 10/2016

P:\GIS\projects\112\050556-PPP\WAD\Permits\PPP_Environment\Assessment\EnclosB\Rev4.mxd



- Legend**
-  Proposed 20-inch and 16-inch Pipeline Corridor
 -  Permanent Access Road
 -  Temporary Access Road
 -  Pump Station LOD
 -  County Boundary
 -  Local Parks
 -  State Parks
 -  State Forest
 -  State Gamelands
 -  Wild Natural Areas
 -  USACE Property
 -  USDA Soils-Prime Farmlands
 -  Appalachian National Scenic Trail
 -  Trails



**Pennsylvania Pipeline Project:
Environmental Assessment
Enclosure B - Resource Identification
Sheet 64**

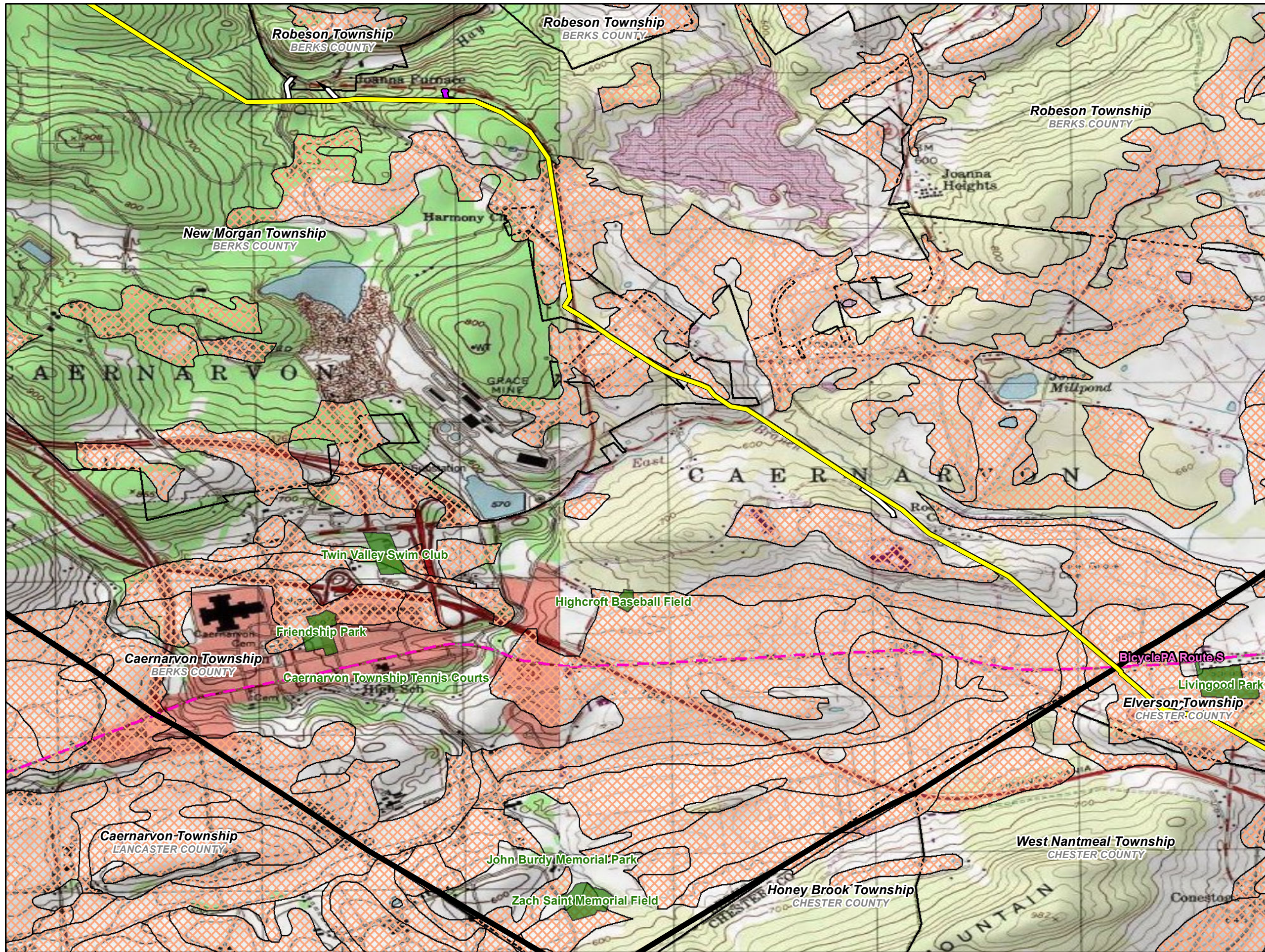
Prepared By:  TETRA TECH

Prepared for:  Sunoco Logistics

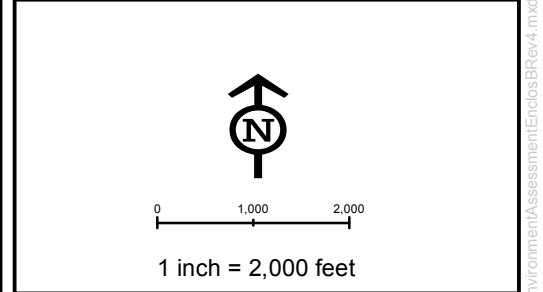
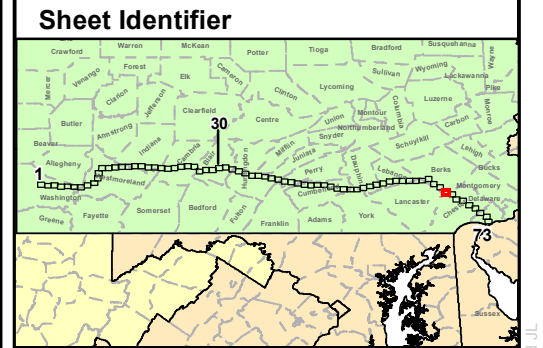
Base Map: ESRI ArcGIS Online
Coordinate System: NAD 83 UTM 17N

Date:
10/2016

P:\GIS\projects\112\059556-PPP\WAD\Permits\PPP_Environment\Assessment\EnclosB\Rev4.mxd .xl



- Legend**
- Proposed 20-inch and 16-inch Pipeline Corridor
 - Permanent Access Road
 - Temporary Access Road
 - Pump Station LOD
 - County Boundary
 - Local Parks
 - State Parks
 - State Forest
 - State Gamelands
 - Wild Natural Areas
 - USACE Property
 - USDA Soils-Prime Farmlands
 - Appalachian National Scenic Trail
 - Trails



**Pennsylvania Pipeline Project:
Environmental Assessment
Enclosure B - Resource Identification
Sheet 65**

Prepared By: TETRA TECH

Prepared for: Sunoco Logistics

Base Map: ESRI ArcGIS Online
Coordinate System: NAD 83 UTM 17N
Date: 10/2016

P:\GIS\projects\112\050556-PPP\MapXDR\Permits\PPP_Environment\Assessment\EnclosB\Rev4.mxd .JL