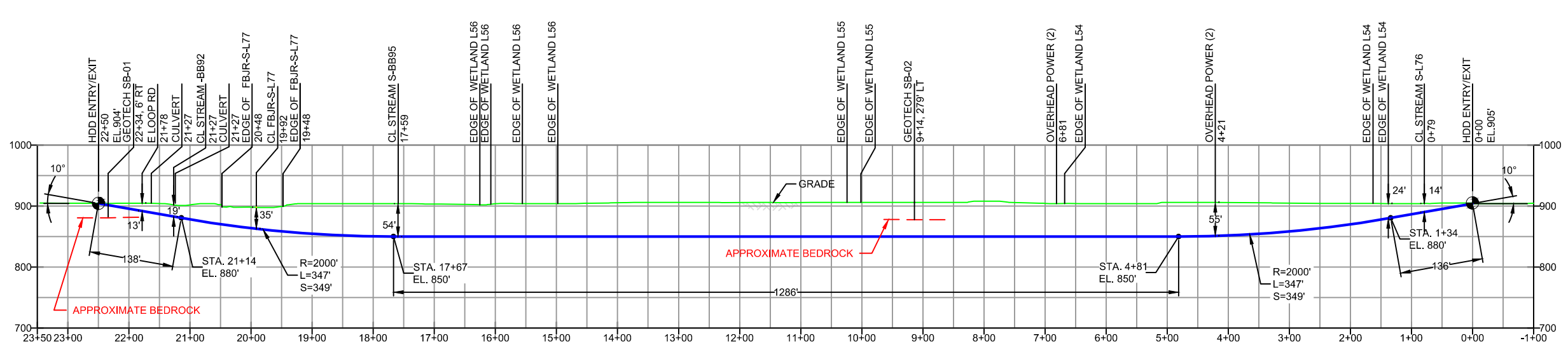


BLAIR COUNTY, PENNSYLVANIA - FRANKSTOWN TOWNSHIP
S2-0130

PLAN VIEW

LEGEND	
PERMANENT ROW	
TEMPORARY CONSTRUCTION ROW	
TEMPORARY WORKSPACE	
TEMPORARY ACCESS ROAD	
PERMANENT ACCESS ROAD	
SPOIL SPACE ONLY	
PROPOSED HDD	
PROPOSED 20" PIPELINE	
PROPOSED 16" PIPELINE	
HDD ENTRY-EXIT	
PEM WETLANDS	
PSS WETLANDS	
PFO WETLANDS	



GEOTECH SB-01	
-NG EL. 904'	-TOPSOIL (0' - 0.3')
-SM (0.3' - 8.0')	-GROUNDWATER (5.0')
-GM (8.0' - 11.0')	-SM (11.0' - 16.0')
-SM / GM (16.0' - 22.0')	-SHALE (22.0' - 22.9')
-COMPLETION DEPTH EL. 881'	

GEOTECH SB-02	
-NG EL. 906'	-ML (0.0' - 8.0')
-GM (8.0' - 14.3')	-SM (14.3' - 20.0')
-FRACTURED SHALE (20.0' - 28.0')	-COMPLETION DEPTH EL. 878'

NOTE: REFER TO TEST BORING LOG S2-0130 FOR COMPLETE SOIL MATERIAL DESCRIPTION

DESIGN AND CONSTRUCTION:

- CONTRACTOR SHALL FIELD VERIFY DEPTH OF ALL EXISTING UTILITIES SHOWN OR NOT SHOWN ON THIS DRAWING.
- THE MINIMUM SEPARATION DISTANCE FROM EXISTING SUBSURFACE UTILITIES SHALL NOT BE LESS THAN 10 FEET AS MEASURED FROM THE OUTSIDE EDGE OF THE UTILITY TO OUTSIDE OF PROPOSED PIPELINE.
- DESIGNED IN ACCORDANCE WITH CFR 49 195 & ASME B31.4
- CROSSING PIPE SPECIFICATION:
HDD HORZ. LENGTH (L=): 2250'
HDD PIPE LENGTH (S=): 2258'
20" x 0.456" W.T., X-65, API 5L PSL2, ERW, BFW
COATING: 14-16 MILS FBE WITH 30-35 MIL ARO (POWERCRETE R95)
- INTERNAL DESIGN PRESSURE 1480 PSIG (SEAM FACTOR 1.0, DESIGN FACTOR 0.50).
- INSTALLATION METHOD: HORIZONTAL DIRECTIONAL DRILL (HDD).
- PIPELINE WARNING MARKERS SHALL BE INSTALLED ON BOTH SIDES OF ALL ROAD, RAILWAY, AND STREAM CROSSINGS.
- CARRIER PIPE NOT ENCASED.
- PIPE / AMBIENT TEMPERATURE MUST BE NO LESS THAN 30°F DURING PULLBACK WITHOUT PRIOR WRITTEN APPROVAL FROM THE ENGINEER.
- CONDUCT 4-HOUR PRE-INSTALLATION HYDROTEST OF HDD PIPE STRING TO MINIMUM 1850 PSIG.
- SEE SUNOCO PENNSYLVANIA PIPELINE PROJECT ESRI WEBMAP FOR ACCESS ROAD ALIGNMENT.
- SUNOCO PIPELINE, L.P.'S HORIZONTAL DIRECTIONAL DRILL INADVERTENT RETURN CONTINGENCY PLAN WILL BE IMPLEMENTED AT ALL TIMES.
- SUNOCO PIPELINE, L.P.'S EROSION AND SEDIMENTATION CONTROL PLAN WILL BE IMPLEMENTED AT ALL TIMES.

NOTES	
1.	ALL COORDINATES SHOWN ARE IN LATITUDE AND LONGITUDE. ALL MSL ELEVATIONS ARE NAD83
2.	STATIONING IS BASED ON HORIZONTAL DISTANCES.
3.	ROONEY ENGINEERING, INC. AND SUNOCO PIPELINE, LP ARE NOT RESPONSIBLE FOR LOCATION OF FOREIGN UTILITIES SHOWN IN PLOT PLAN OR PROFILE. THE INFORMATION SHOWN HEREON IS FURNISHED WITHOUT LIABILITY ON THE PART OF ROONEY ENGINEERING, INC. AND SUNOCO PIPELINE, LP. FOR ANY DAMAGES RESULTING FROM ERRORS OR OMISSIONS THEREIN.
4.	CONTRACTOR IS RESPONSIBLE FOR LOCATING ALL UTILITIES. CONTACT ONE CALL AT 811 PRIOR TO DIGGING.
5.	SUNOCO EMERGENCY HOTLINE NUMBER IS 1-800-786-7440.

REF. DRAWING				REVISIONS			
ES-3.44	TO	ES-3.46	EROSION & SEDIMENT PLAN	EP2	REVISED PER PADEP COMMENTS RECEIVED 09-06-16	DLM	09/30/16
SHEET 29	TO	SHEET 29	AERIAL SITE PLAN	EP1	REVISED PER PADEP COMMENTS	DLM	05/18/16
				EP		MRS	11/23/15
				C	ADDED GEOTECH INFO	RMB	09/03/15
				B	ISSUED FOR BID	JAM	07/31/15
				A	ISSUED FOR REVIEW	RTT	3/19/15
DWG NO		DWG NO	DESCRIPTION	NO.	DESCRIPTION	BY	DATE

Sunoco Logistics Partners L.P.

TETRA TECH ROONEY
(303) 792-5911

SUNOCO PIPELINE, L.P.

20-INCH HORIZONTAL DIRECTIONAL DRILL
FRANKSTOWN BRANCH JUNIATA RIVER
PENNSYLVANIA PIPELINE PROJECT

SCALE: 1"=200' DWG. NO: PA-BL-0001.0094-WX