

SPLP has had revisions to the proposed workspaces in Cambria County since submittal of the Chapter 105 and 102 Permit Applications in March 2016. These revisions have been the result of landowner requests, agency requests, the avoidance of sensitive species or their habitats, and/or to further reduce impacts to aquatic resources. The additions and subtractions to the workspaces are listed and quantified within Table 1. In addition, this attachment highlights the location and extent of these additions and subtractions to the workspaces on a set of site plans. Each addition/subtraction has been assigned an identification code and that code is reflected below and on the set of site plans. The additions and subtractions are listed from west to east. A total of approximately 3.5769 acres was added and 4.0413 acres subtracted for a net decrease of 0.4644 acres of earth disturbance.

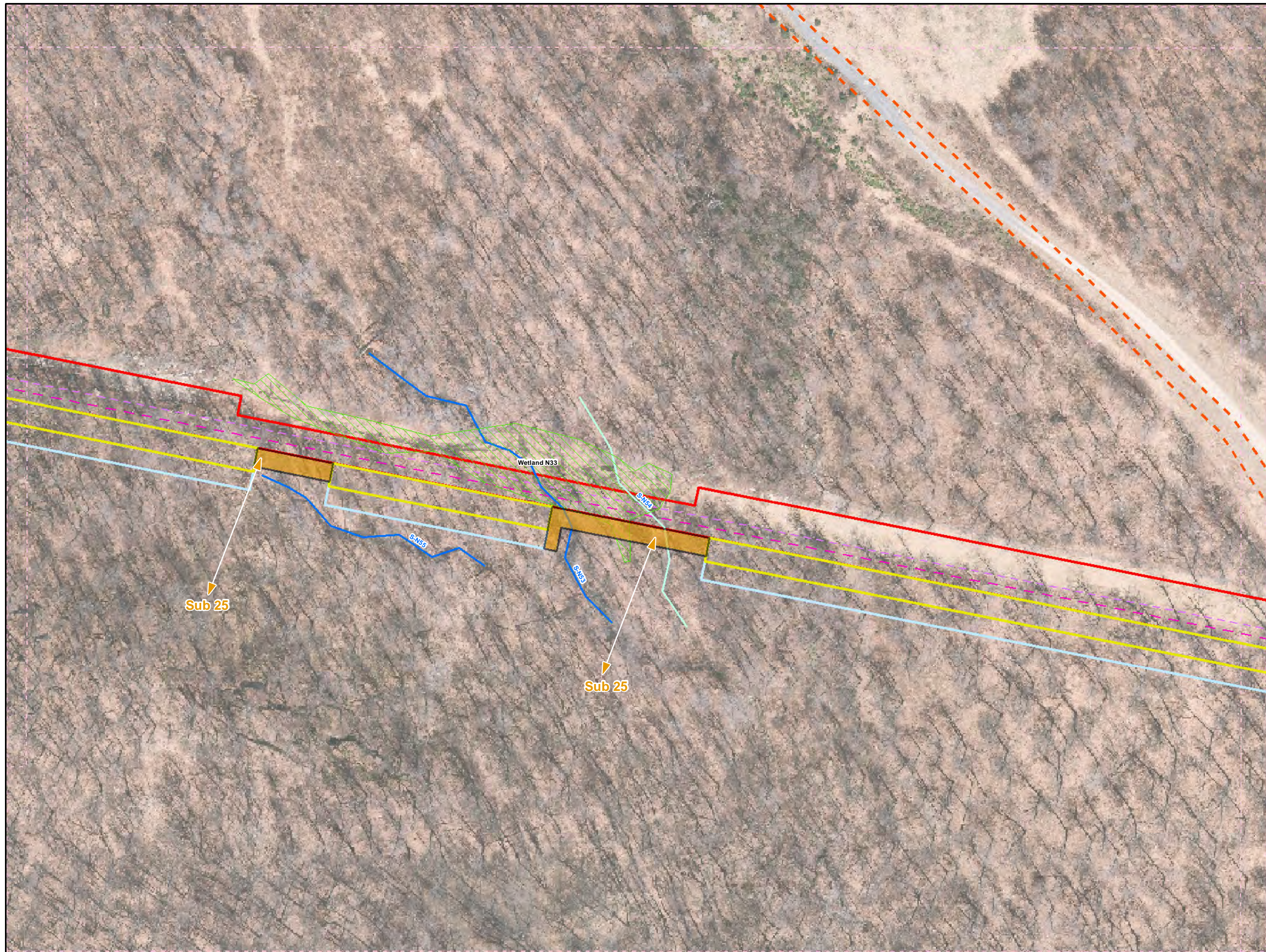
**Table 1. Pennsylvania Pipeline Project LOD Additions and Subtractions.**

CHANGE ID	COUNTY	REASON FOR CHANGE	ACREAGE	LOD ADDITION OR SUBTRACTION	WETLAND DELINEATION <sup>1</sup>	PNDI EVALUATION <sup>2</sup>	SHEET NUMBER
Sub-25	CAMBRIA	LOD adjustment to minimize aquatic resource impact	0.1222	Subtraction	NA	NA	11
Sub-27	CAMBRIA	LOD adjustment to minimize aquatic resource impact	0.0647	Subtraction	NA	NA	13
Add-19	CAMBRIA	Minor LOD adjustment needed to facilitate safe installation	0.0177	Addition	Yes	Yes	14
Sub-26	CAMBRIA	LOD adjustment to minimize aquatic resource impact	0.0135	Subtraction	NA	NA	16
Sub-28	CAMBRIA	LOD adjustment to minimize aquatic resource impact	0.0683	Subtraction	NA	NA	16
Sub-29	CAMBRIA	Temporary workspace no longer necessary	0.032	Subtraction	NA	NA	31
Sub-30	CAMBRIA	LOD adjustment to minimize aquatic resource impact	0.0807	Subtraction	NA	NA	39
Sub-31	CAMBRIA	LOD adjustment to minimize aquatic resource impact	0.0047	Subtraction	NA	NA	41
Sub-32	CAMBRIA	Minor LOD adjustment needed to facilitate safe installation	0.0481	Subtraction	NA	NA	45

<b>CHANGE ID</b>	<b>COUNTY</b>	<b>REASON FOR CHANGE</b>	<b>ACREAGE</b>	<b>LOD ADDITION OR SUBTRACTION</b>	<b>WETLAND DELINEATION<sup>1</sup></b>	<b>PNDI EVALUATION<sup>2</sup></b>	<b>SHEET NUMBER</b>
Sub-33	CAMBRIA	LOD adjustment to minimize aquatic resource impact	0.0023	Subtraction	NA	NA	61
Sub-34	CAMBRIA	LOD adjustment to minimize aquatic resource impact	0.0062	Subtraction	NA	NA	61
Sub-35	CAMBRIA	LOD adjustment to minimize aquatic resource impact	0.007	Subtraction	NA	NA	61
Add-20	CAMBRIA	Minor LOD adjustment needed to facilitate safe installation	0.0544	Addition	Yes	Yes	63
Add-21	CAMBRIA	Minor LOD adjustment needed to facilitate safe installation	0.06	Addition	Yes	Yes	63
Sub-36	CAMBRIA	Minor LOD adjustment needed to facilitate safe installation	0.0033	Subtraction	NA	NA	66
Add-22	CAMBRIA	LOD adjustment needed to facilitate safe installation	3.4448	Addition	Yes	Yes	78
Sub-37	CAMBRIA	LOD adjustment needed to facilitate safe installation	3.5883	Subtraction	NA	NA	78

1 – The added area was field investigated for aquatic resources. Not applicable is listed for LOD subtractions.

2 – The added area was originally evaluated for PNDI. Not applicable is listed for LOD subtractions.



**Legend**

- Added Workspace
- Removed Workspace
- Proposed 20-inch Pipeline
- Proposed 16-inch Pipeline
- Bore Path
- PPP 1 HDD
- PPP 2 HDD
- Permanent ROW
- Temporary Workspace
- Additional Temporary Workspace or ATWS
- Block Valve Setting LOD
- Permanent Access Road
- Temporary Access Road
- Travel LOD
- Travel and Clearing LOD
- Station
- Ephemeral Stream
- Intermittent Stream
- Perennial Stream
- Pond
- PEM
- PFO
- PSS

1 inch = 100 feet

**Workspace Changes for the Sunoco Pennsylvania Pipeline Project, Cambria County, PA.**  
11 of 101

<b>Prepared By:</b> TETRA TECH	<b>Date:</b> 10/2016
-----------------------------------	-------------------------

Base Map: Sunoco, 2013-2016  
Roads: ESRI World Imagery Transportation  
Coordinate System: NAD 83 Stateplane, PA South, Feet

D:\P\GIS\PROJECTS\1122059566-PPP\MAPS\CAMBRIA\COUNTY\ADDITION\_SUBTRACTION\MXD\11/10/2016.JL



**Legend**

- Added Workspace
- Removed Workspace
- Proposed 20-inch Pipeline
- Proposed 16-inch Pipeline
- Bore Path
- PPP 1 HDD
- PPP 2 HDD
- Permanent ROW
- Temporary Workspace
- Additional Temporary Workspace or ATWS
- Block Valve Setting LOD
- Permanent Access Road
- Temporary Access Road
- Travel LOD
- Travel and Clearing LOD
- Station
- Ephemeral Stream
- Intermittent Stream
- Perennial Stream
- Pond
- PEM
- PFO
- PSS

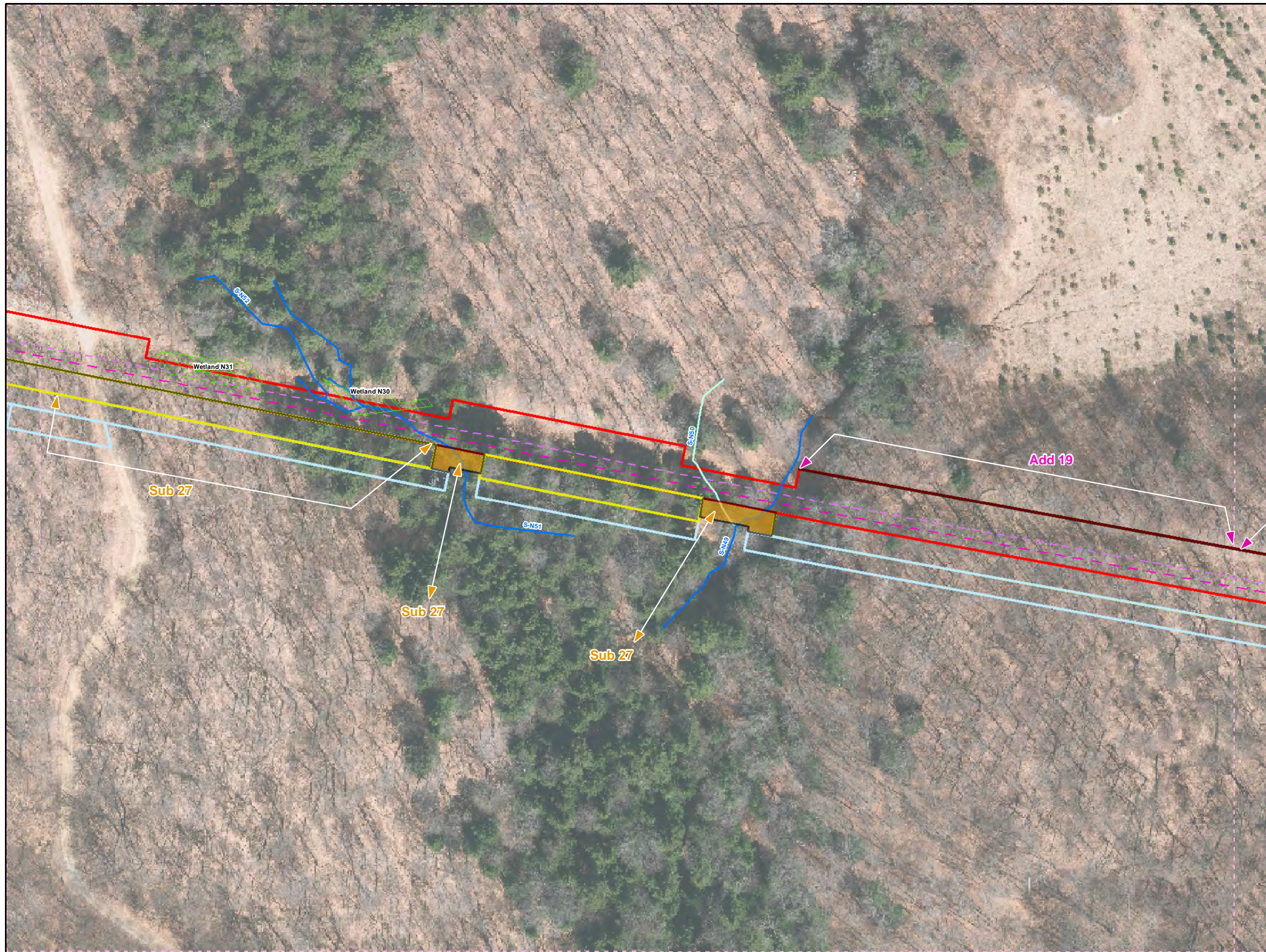
1 inch = 100 feet

**Workspace Changes for the Sunoco Pennsylvania Pipeline Project, Cambria County, PA.**  
13 of 101

Prepared By:	Date:
	10/2016

Base Map: Sunoco, 2013-2016  
Roads: ESRI World Imagery Transportation  
Coordinate System: NAD 83 Stateplane, PA South, Feet

B:\P\GIS\PROJECTS\1122005656-PPP\MAPS\CAMBRIA\COUNTY\ADDITION\_SUBTRACTION\MXD\11/10/2016.JL



**Legend**

- Added Workspace
- Removed Workspace
- Proposed 20-inch Pipeline
- Proposed 16-inch Pipeline
- Bore Path
- PPP 1 HDD
- PPP 2 HDD
- Permanent ROW
- Temporary Workspace
- Additional Temporary Workspace or ATWS
- Block Valve Setting LOD
- Permanent Access Road
- Temporary Access Road
- Travel LOD
- Travel and Clearing LOD
- Station
- Ephemeral Stream
- Intermittent Stream
- Perennial Stream
- Pond
- PEM
- PFO
- PSS

1 inch = 100 feet

0 50 100 200

↑  
N

**Workspace Changes for the Sunoco Pennsylvania Pipeline Project, Cambria County, PA.**  
14 of 101

Prepared By: TETRA TECH	Date: <b>10/2016</b>
----------------------------	-------------------------

Base Map: Sunoco, 2013-2016  
Roads: ESRI World Imagery Transportation  
Coordinate System: NAD 83 Stateplane, PA South, Feet

B:\P\GIS\PROJECTS\1122059566-PPP\MAPS\CAMBRIA\COUNTY\ADDITION\_SUBTRACTION\MXD\11/10/2016.JL



**Legend**

- Added Workspace
- Removed Workspace
- Proposed 20-inch Pipeline
- Proposed 16-inch Pipeline
- Bore Path
- PPP 1 HDD
- PPP 2 HDD
- Permanent ROW
- Temporary Workspace
- Additional Temporary Workspace or ATWS
- Block Valve Setting LOD
- Permanent Access Road
- Temporary Access Road
- Travel LOD
- Travel and Clearing LOD
- Station
- Ephemeral Stream
- Intermittent Stream
- Perennial Stream
- Pond
- PEM
- PFO
- PSS

↑  
N

0    50    100    200

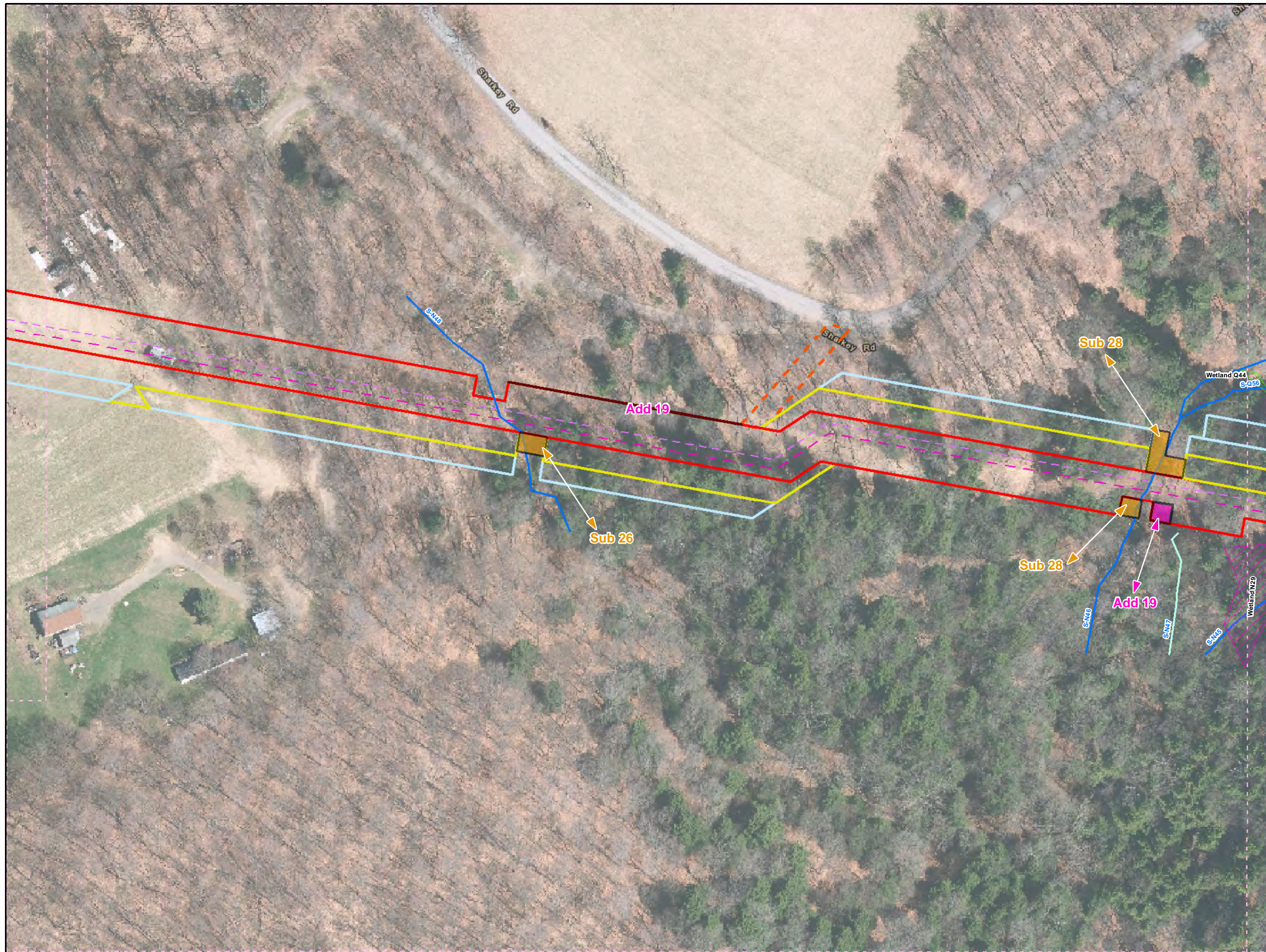
**1 inch = 100 feet**

**Workspace Changes for the Sunoco Pennsylvania Pipeline Project, Cambria County, PA.**  
15 of 101

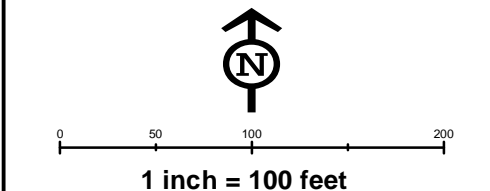
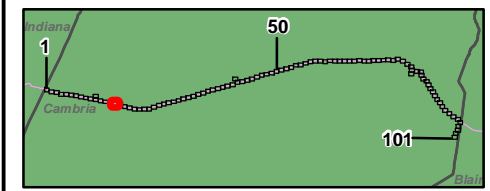
Prepared By:	Date:
<b>TETRA TECH</b>	<b>10/2016</b>

Base Map: Sunoco, 2013-2016  
Roads: ESRI World Imagery Transportation  
Coordinate System: NAD 83 Stateplane, PA South, Feet

D:\GIS\PROJECTS\1122005656-PPP\MAPS\CAMBRIA\COUNTY\ADDITION\_SUBTRACTION\MXD\11/10/2016.JL



- Legend**
- Added Workspace
  - Removed Workspace
  - Proposed 20-inch Pipeline
  - Proposed 16-inch Pipeline
  - Bore Path
  - PPP 1 HDD
  - PPP 2 HDD
  - Permanent ROW
  - Temporary Workspace
  - Additional Temporary Workspace or ATWS
  - Block Valve Setting LOD
  - Permanent Access Road
  - Temporary Access Road
  - Travel LOD
  - Travel and Clearing LOD
  - Station
  - Ephemeral Stream
  - Intermittent Stream
  - Perennial Stream
  - Pond
  - PEM
  - PFO
  - PSS

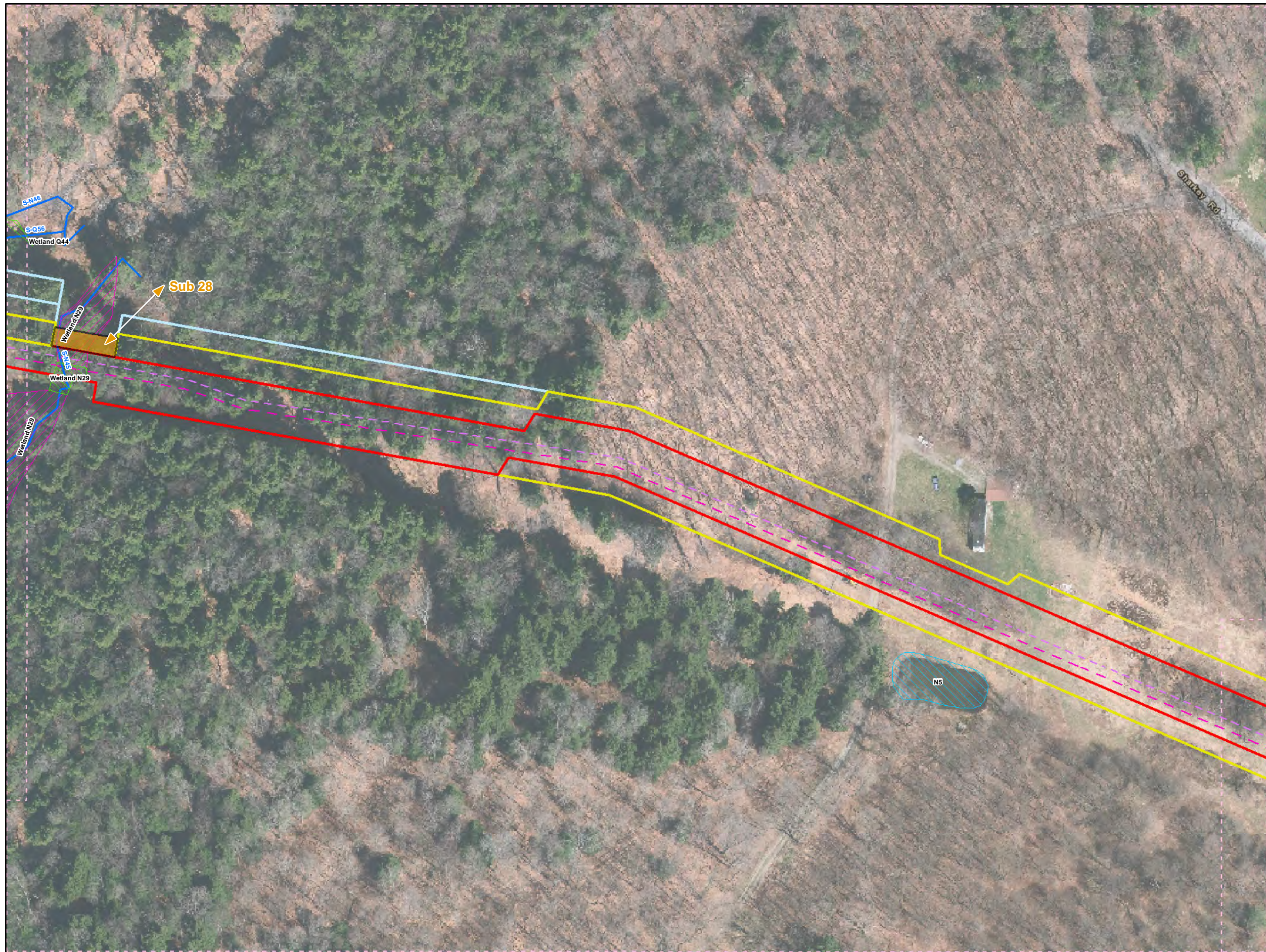


**Workspace Changes for the Sunoco  
Pennsylvania Pipeline Project,  
Cambria County, PA.  
16 of 101**

<b>Prepared By:</b>	<b>Date:</b>
<b>TETRA TECH</b>	<b>10/2016</b>

Base Map: Sunoco, 2013-2016  
 Roads: ESRI World Imagery Transportation  
 Coordinate System: NAD 83 Stateplane, PA South, Feet

B:\P\GIS\PROJECTS\1122059566-PPP\MAPS\CAMBRIA\COUNTY\ADDITION\_SUBTRACTION\11/10/2016.JL



**Legend**

- Added Workspace
- Removed Workspace
- Proposed 20-inch Pipeline
- Proposed 16-inch Pipeline
- Bore Path
- PPP 1 HDD
- PPP 2 HDD
- Permanent ROW
- Temporary Workspace
- Additional Temporary Workspace or ATWS
- Block Valve Setting LOD
- Permanent Access Road
- Temporary Access Road
- Travel LOD
- Travel and Clearing LOD
- Station
- Ephemeral Stream
- Intermittent Stream
- Perennial Stream
- Pond
- PEM
- PFO
- PSS

↑  
N

0    50    100    200

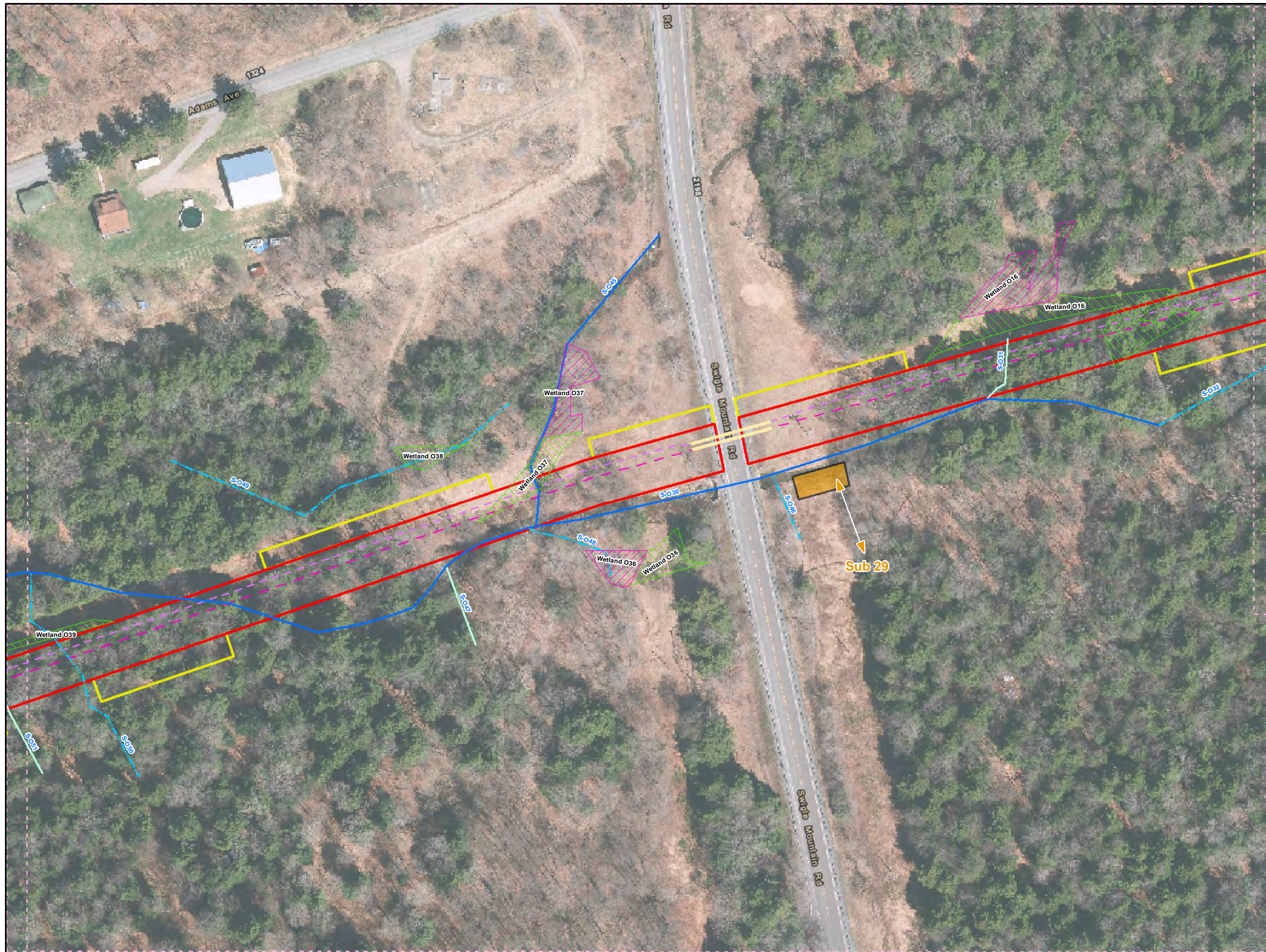
**1 inch = 100 feet**

**Workspace Changes for the Sunoco Pennsylvania Pipeline Project, Cambria County, PA.**  
17 of 101

Prepared By: <b>TETRA TECH</b>	Date: <b>10/2016</b>
-----------------------------------	-------------------------

Base Map: Sunoco, 2013-2016  
Roads: ESRI World Imagery Transportation  
Coordinate System: NAD 83 Stateplane, PA South, Feet

B:\P:\GIS\PROJECTS\1720059566-PPP\MAPS\CAMBRIA\COUNTY\ADDITION\_SUBTRACTION\IMXD\_11/10/2016.JL



**Legend**

- Added Workspace
- Removed Workspace
- Proposed 20-inch Pipeline
- Proposed 16-inch Pipeline
- Bore Path
- PPP 1 HDD
- PPP 2 HDD
- Permanent ROW
- Temporary Workspace
- Additional Temporary Workspace or ATWS
- Block Valve Setting LOD
- Permanent Access Road
- Temporary Access Road
- Travel LOD
- Travel and Clearing LOD
- Station
- Ephemeral Stream
- Intermittent Stream
- Perennial Stream
- Pond
- PEM
- PFO
- PSS

1  
50  
101

N

0 50 100 200

**1 inch = 100 feet**

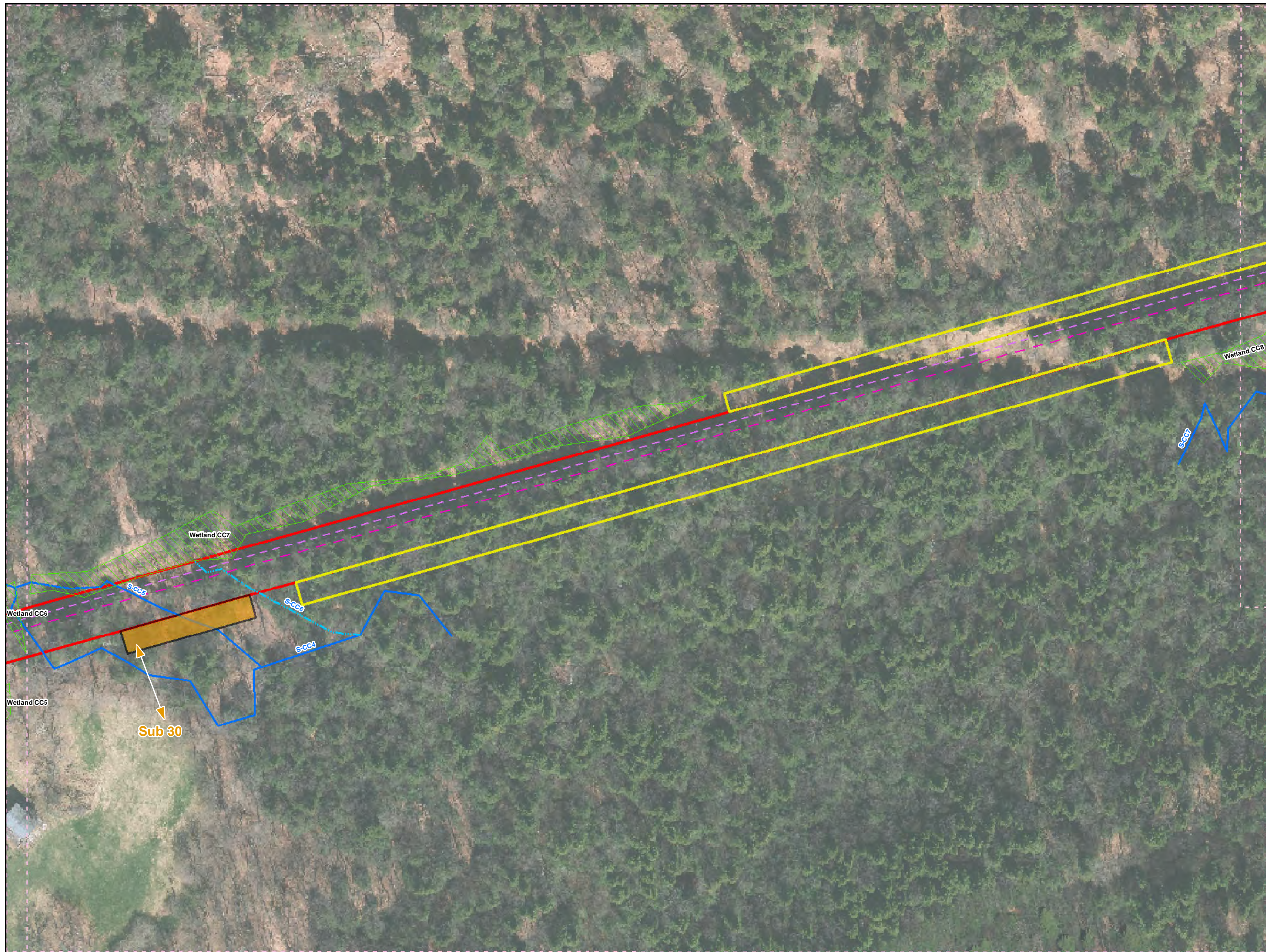
**Workspace Changes for the Sunoco Pennsylvania Pipeline Project, Cambria County, PA.**

31 of 101

Prepared By:	Date:
<span style="font-weight: bold; font-size: 12px;">TETRA TECH</span>	10/2016

Base Map: Sunoco, 2013-2016  
Roads: ESRI World Imagery Transportation  
Coordinate System: NAD 83 Stateplane, PA South, Feet

B:\P:\GIS\PROJECTS\1122059566-PPP\MAPS\CAMBRIA\COUNTY\ADDITION\_SUBTRACTION\MXD\11/10/2016.JL



**Legend**

- Added Workspace
- Removed Workspace
- Proposed 20-inch Pipeline
- Proposed 16-inch Pipeline
- Bore Path
- PPP 1 HDD
- PPP 2 HDD
- Permanent ROW
- Temporary Workspace
- Additional Temporary Workspace or ATWS
- Block Valve Setting LOD
- Permanent Access Road
- Temporary Access Road
- Travel LOD
- Travel and Clearing LOD
- Station
- Ephemeral Stream
- Intermittent Stream
- Perennial Stream
- Pond
- PEM
- PFO
- PSS

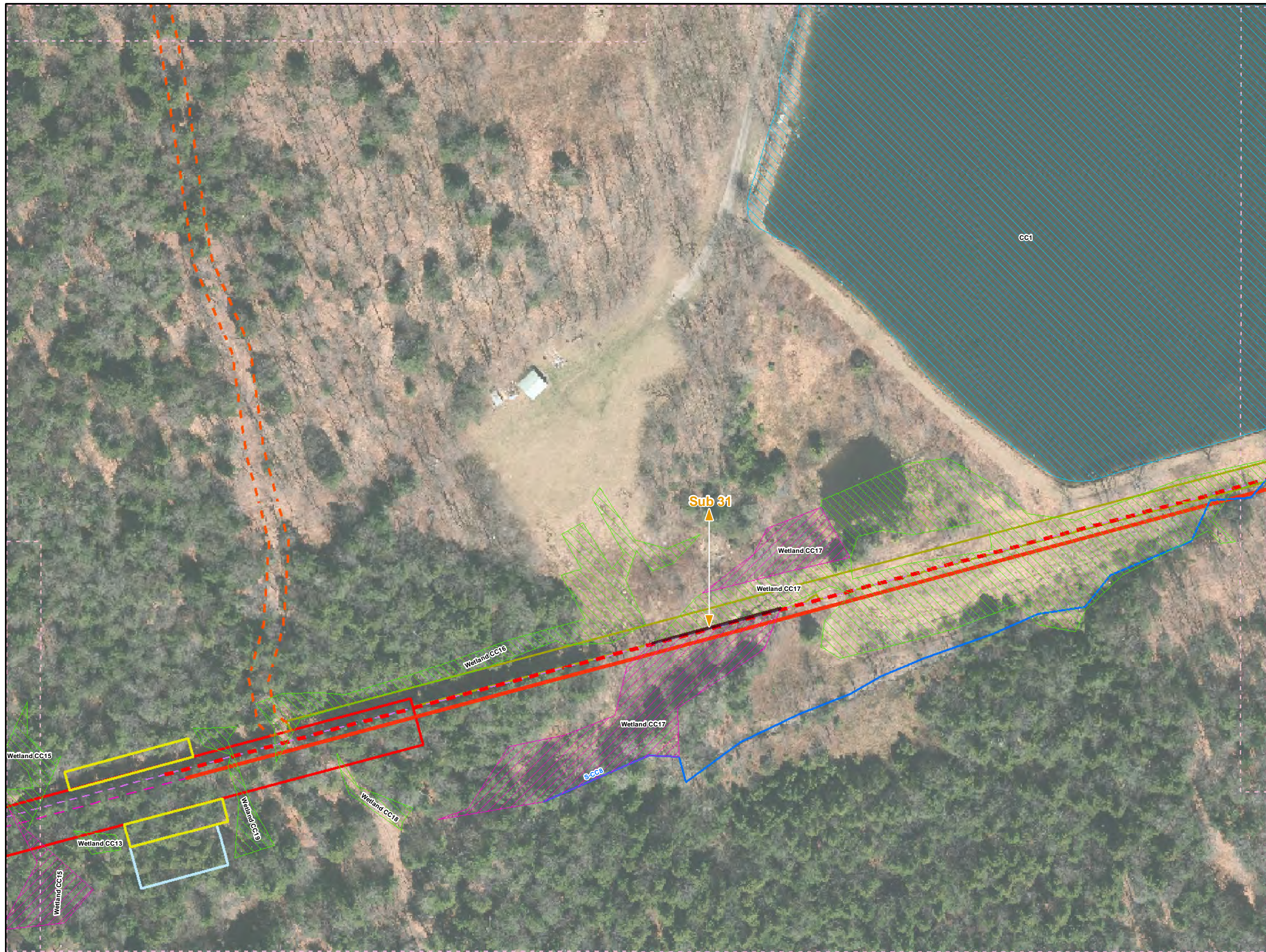
**1 inch = 100 feet**

**Workspace Changes for the Sunoco Pennsylvania Pipeline Project, Cambria County, PA.**  
39 of 101

Prepared By: 	Date: <b>10/2016</b>
------------------	-------------------------

Base Map: Sunoco, 2013-2016  
 Roads: ESRI World Imagery Transportation  
 Coordinate System: NAD 83 Stateplane, PA South, Feet

C:\GIS\PROJECTS\1122069666-PPP\MAPS\CAMBRIA\COUNTY\ADDITION\\_SUBTRACTION\MXD\11/10/2016.JL



**Legend**

- Added Workspace
- Removed Workspace
- Proposed 20-inch Pipeline
- Proposed 16-inch Pipeline
- Bore Path
- PPP 1 HDD
- PPP 2 HDD
- Permanent ROW
- Temporary Workspace
- Additional Temporary Workspace or ATWS
- Block Valve Setting LOD
- Permanent Access Road
- Temporary Access Road
- Travel LOD
- Travel and Clearing LOD
- Station
- Ephemeral Stream
- Intermittent Stream
- Perennial Stream
- Pond
- PEM
- PFO
- PSS

**1 inch = 100 feet**

**Workspace Changes for the Sunoco Pennsylvania Pipeline Project, Cambria County, PA.**  
41 of 101

Prepared By: 	Date: <b>10/2016</b>
------------------	-------------------------

Base Map: Sunoco, 2013-2016  
 Roads: ESRI World Imagery Transportation  
 Coordinate System: NAD 83 Stateplane, PA South, Feet



**Legend**

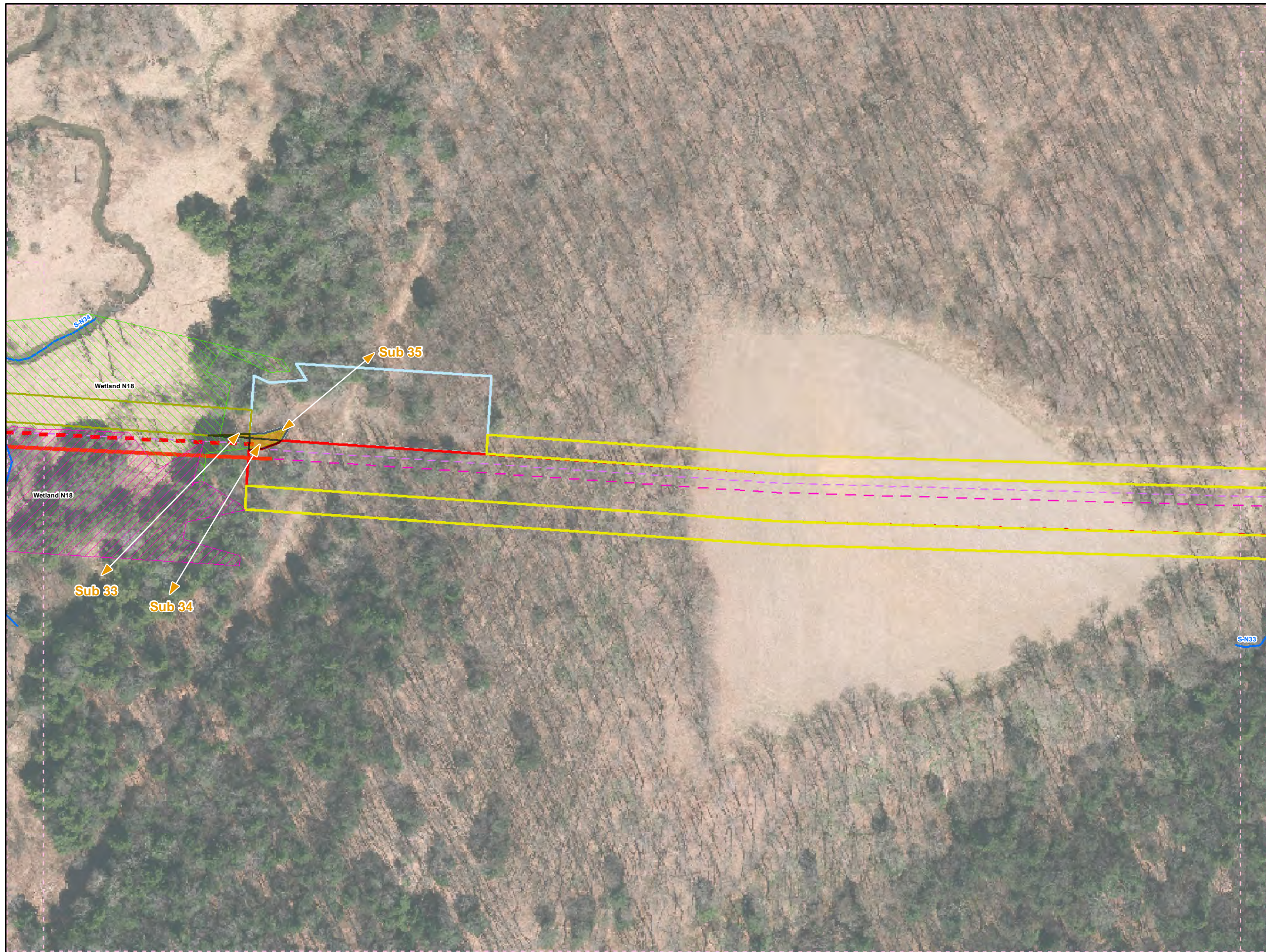
- Added Workspace
- Removed Workspace
- Proposed 20-inch Pipeline
- Proposed 16-inch Pipeline
- Bore Path
- PPP 1 HDD
- PPP 2 HDD
- Permanent ROW
- Temporary Workspace
- Additional Temporary Workspace or ATWS
- Block Valve Setting LOD
- Permanent Access Road
- Temporary Access Road
- Travel LOD
- Travel and Clearing LOD
- Station
- Ephemeral Stream
- Intermittent Stream
- Perennial Stream
- Pond
- PEM
- PFO
- PSS

**1 inch = 100 feet**

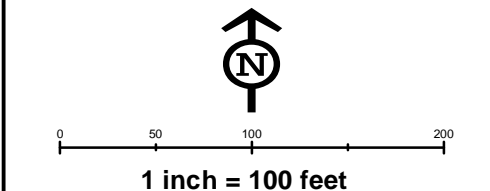
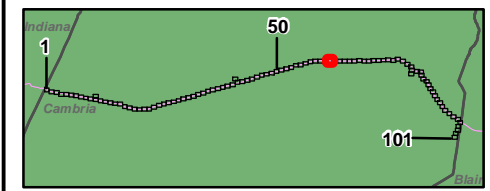
**Workspace Changes for the Sunoco Pennsylvania Pipeline Project, Cambria County, PA.**  
45 of 101

Prepared By: 	Date: <b>10/2016</b>
------------------	-------------------------

Base Map: Sunoco, 2013-2016  
 Roads: ESRI World Imagery Transportation  
 Coordinate System: NAD 83 Stateplane, PA South, Feet



- Legend**
- Added Workspace
  - Removed Workspace
  - Proposed 20-inch Pipeline
  - Proposed 16-inch Pipeline
  - Bore Path
  - PPP 1 HDD
  - PPP 2 HDD
  - Permanent ROW
  - Temporary Workspace
  - Additional Temporary Workspace or ATWS
  - Block Valve Setting LOD
  - Permanent Access Road
  - Temporary Access Road
  - Travel LOD
  - Travel and Clearing LOD
  - Station
  - Ephemeral Stream
  - Intermittent Stream
  - Perennial Stream
  - Pond
  - PEM
  - PFO
  - PSS

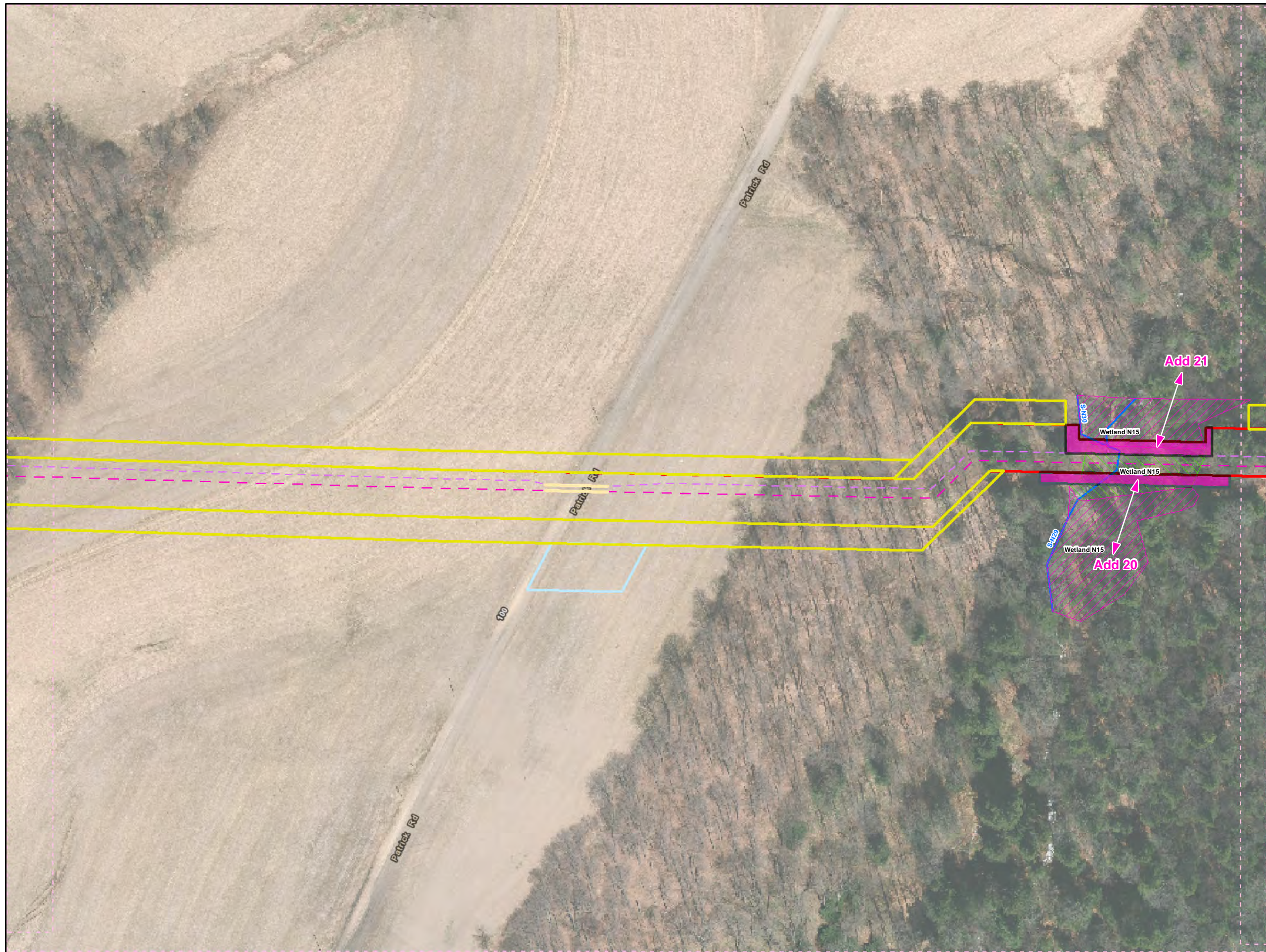


**Workspace Changes for the Sunoco  
Pennsylvania Pipeline Project,  
Cambria County, PA.  
61 of 101**

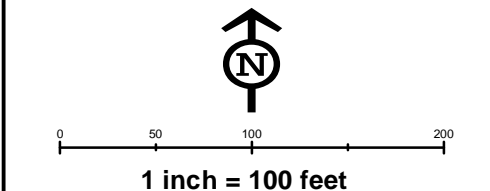
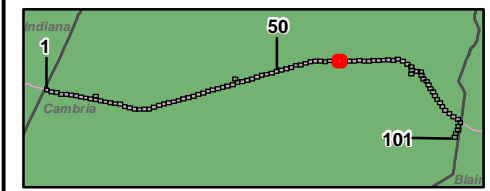
Prepared By: <b>TETRA TECH</b>	Date: <b>10/2016</b>
-----------------------------------	-------------------------

Base Map: Sunoco, 2013-2016  
Roads: ESRI World Imagery Transportation  
Coordinate System: NAD 83 Stateplane, PA South, Feet

B:\P\GIS\PROJECTS\112206966-PPP\MAPS\CAMBRIA\COUNTY\ADDITION\_SUBTRACTION\MXD\11/10/2016.JL



- Legend**
- Added Workspace
  - Removed Workspace
  - Proposed 20-inch Pipeline
  - Proposed 16-inch Pipeline
  - Bore Path
  - PPP 1 HDD
  - PPP 2 HDD
  - Permanent ROW
  - Temporary Workspace
  - Additional Temporary Workspace or ATWS
  - Block Valve Setting LOD
  - Permanent Access Road
  - Temporary Access Road
  - Travel LOD
  - Travel and Clearing LOD
  - Station
  - Ephemeral Stream
  - Intermittent Stream
  - Perennial Stream
  - Pond
  - PEM
  - PFO
  - PSS

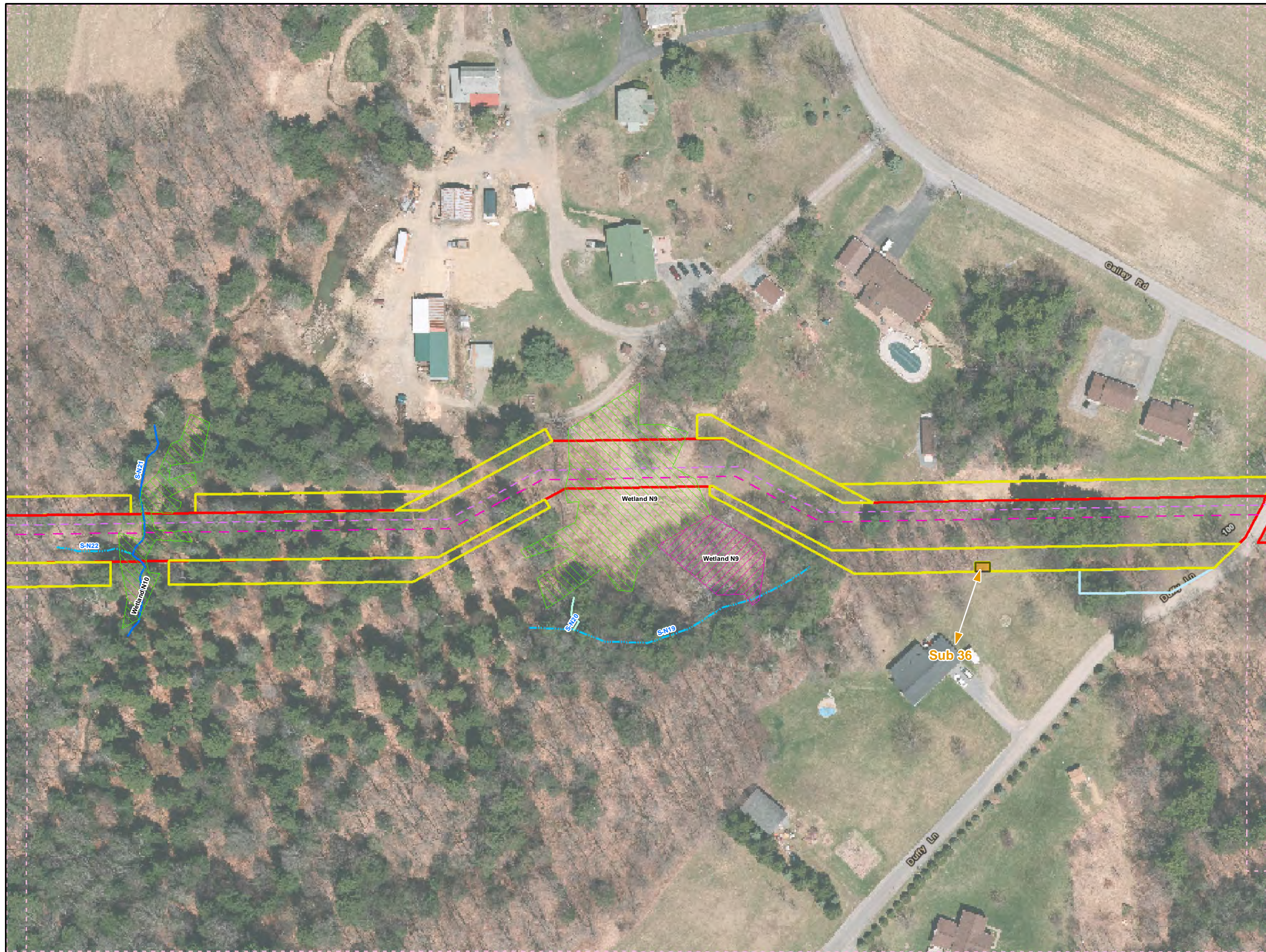


**Workspace Changes for the Sunoco  
Pennsylvania Pipeline Project,  
Cambria County, PA.**  
63 of 101

Prepared By: <b>TETRA TECH</b>	Date: <b>10/2016</b>
-----------------------------------	-------------------------

Base Map: Sunoco, 2013-2016  
Roads: ESRI World Imagery Transportation  
Coordinate System: NAD 83 Stateplane, PA South, Feet

B:\P\GIS\PROJECTS\1122059566-PPP\MAPS\PERMITS\STANDARD\SUBTRACTION\MXD\11/10/2016.JL



**Legend**

- Added Workspace
- Removed Workspace
- Proposed 20-inch Pipeline
- Proposed 16-inch Pipeline
- Bore Path
- PPP 1 HDD
- PPP 2 HDD
- Permanent ROW
- Temporary Workspace
- Additional Temporary Workspace or ATWS
- Block Valve Setting LOD
- Permanent Access Road
- Temporary Access Road
- Travel LOD
- Travel and Clearing LOD
- Station
- Ephemeral Stream
- Intermittent Stream
- Perennial Stream
- Pond
- PEM
- PFO
- PSS

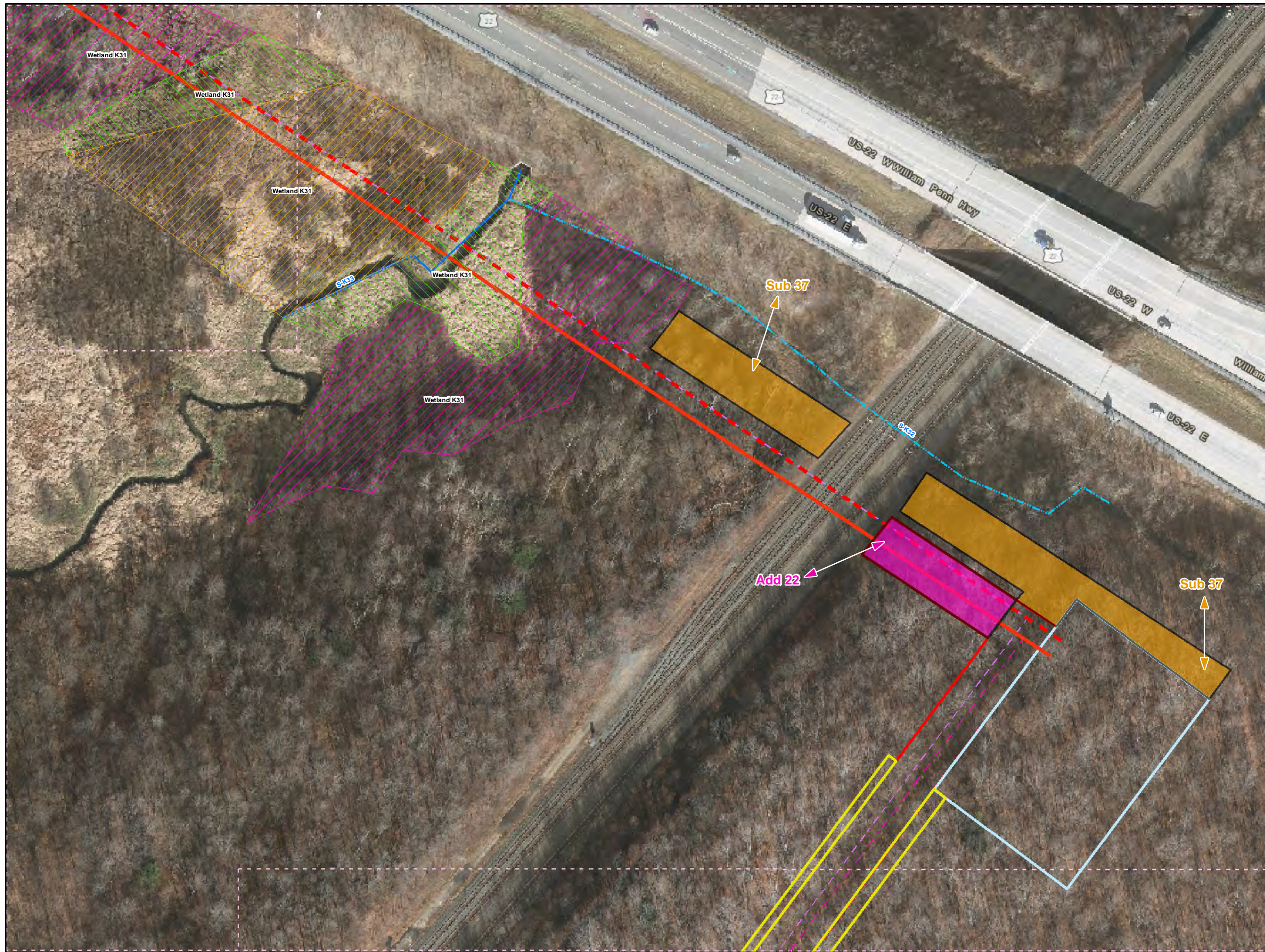
**1 inch = 100 feet**

**Workspace Changes for the Sunoco Pennsylvania Pipeline Project, Cambria County, PA.**  
66 of 101

Prepared By: 	Date: <b>10/2016</b>
------------------	-------------------------

Base Map: Sunoco, 2013-2016  
 Roads: ESRI World Imagery Transportation  
 Coordinate System: NAD 83 Stateplane, PA South, Feet

B:\P:\GIS\PROJECTS\1122059566-PPP\MAPS\CAMBRIA\COUNTY\ADDITION\_SUBTRACTION\MXD\11/10/2016.JL



**Legend**

- Added Workspace
- Removed Workspace
- Proposed 20-inch Pipeline
- Proposed 16-inch Pipeline
- Bore Path
- PPP 1 HDD
- PPP 2 HDD
- Permanent ROW
- Temporary Workspace
- Additional Temporary Workspace or ATWS
- Block Valve Setting LOD
- Permanent Access Road
- Temporary Access Road
- Travel LOD
- Travel and Clearing LOD
- Station
- Ephemeral Stream
- Intermittent Stream
- Perennial Stream
- Pond
- PEM
- PFO
- PSS

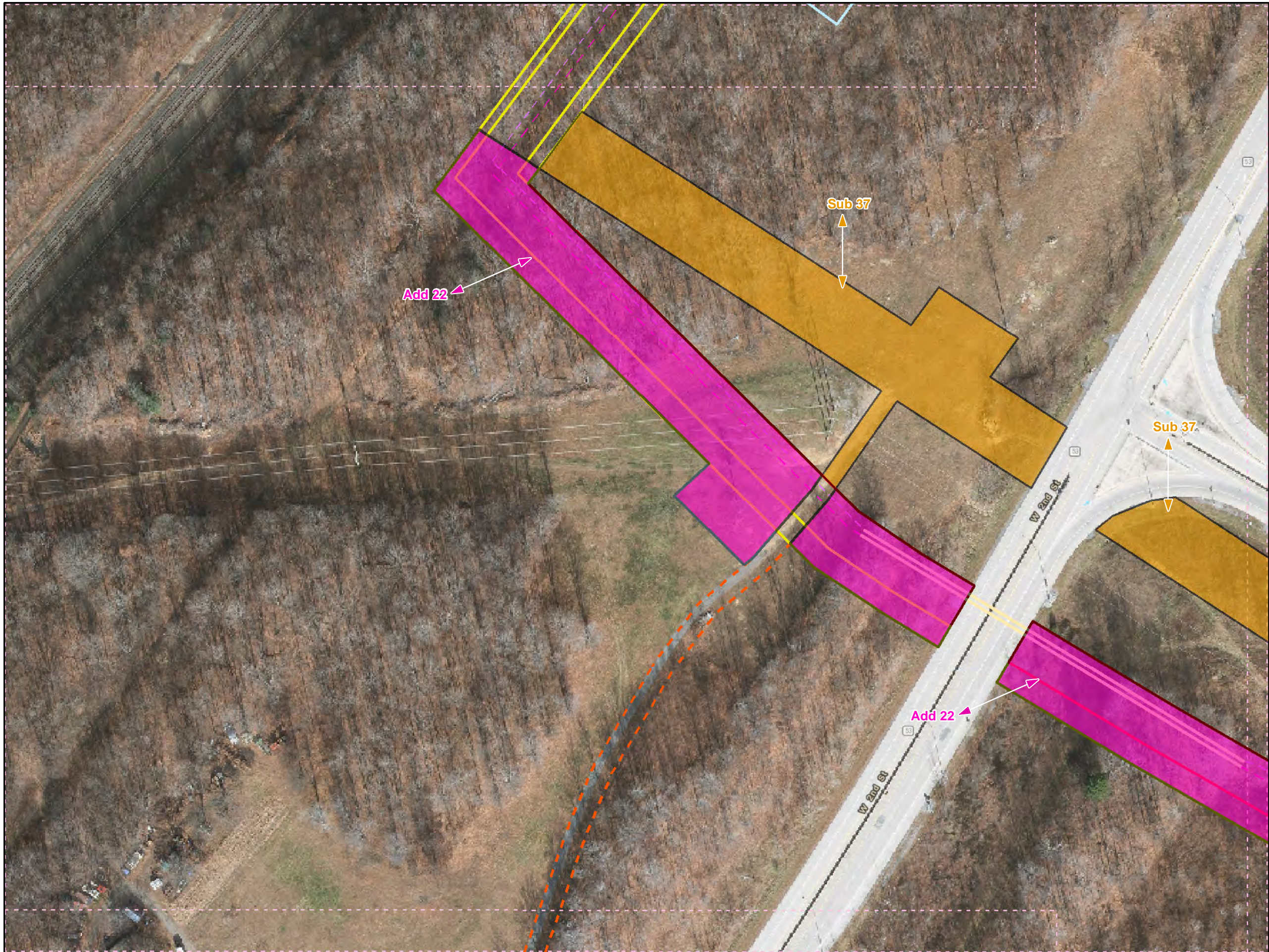
0 50 100 200

**1 inch = 100 feet**

**Workspace Changes for the Sunoco Pennsylvania Pipeline Project, Cambria County, PA.**  
78 of 101

Prepared By: 	Date: <b>10/2016</b>
------------------	-------------------------

Base Map: Sunoco, 2013-2016  
 Roads: ESRI World Imagery Transportation  
 Coordinate System: NAD 83 Stateplane, PA South, Feet



**Legend**

- Added Workspace
- Removed Workspace
- Proposed 20-inch Pipeline
- Proposed 16-inch Pipeline
- Bore Path
- PPP 1 HDD
- PPP 2 HDD
- Permanent ROW
- Temporary Workspace
- Additional Temporary Workspace or ATWS
- Block Valve Setting LOD
- Permanent Access Road
- Temporary Access Road
- Travel LOD
- Travel and Clearing LOD
- Station
- Ephemeral Stream
- Intermittent Stream
- Perennial Stream
- Pond
- PEM
- PFO
- PSS

1  
50  
101

N

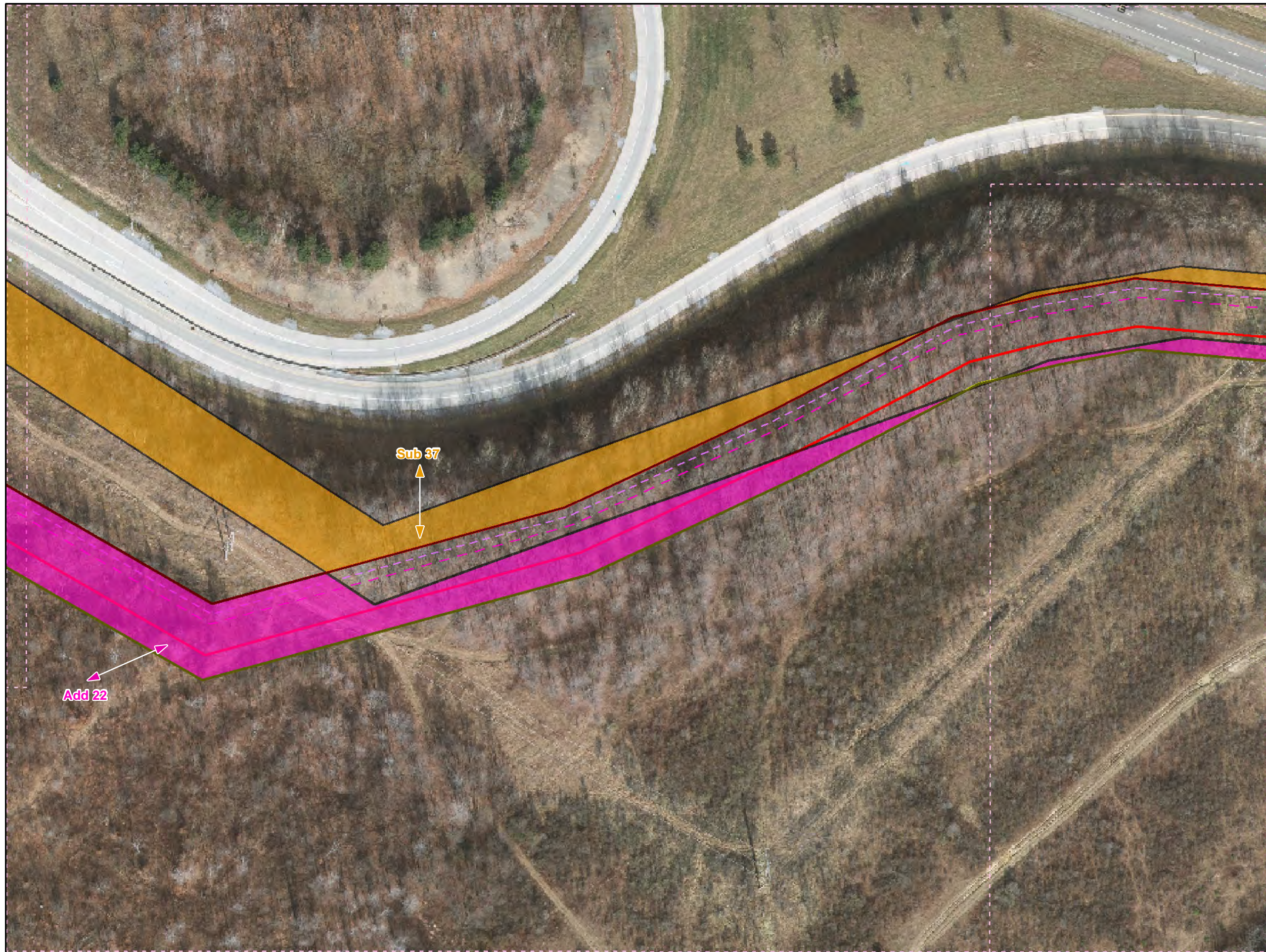
1 inch = 100 feet

Workspace Changes for the Sunoco  
Pennsylvania Pipeline Project,  
Cambria County, PA.  
79 of 101

Prepared By: 	Date: <b>10/2016</b>
------------------	-------------------------

Base Map: Sunoco, 2013-2016  
 Roads: ESRI World Imagery Transportation  
 Coordinate System: NAD 83 Stateplane, PA South, Feet

BUFP:GIS\PROJECTS\1122059566-PPP\MAPS\CAMBRIA\COUNTY\ADDITION\_SUBTRACTION\MXD 11/10/2016 JL



**Legend**

- Added Workspace
- Removed Workspace
- Proposed 20-inch Pipeline
- Proposed 16-inch Pipeline
- Bore Path
- PPP 1 HDD
- PPP 2 HDD
- Permanent ROW
- Temporary Workspace
- Additional Temporary Workspace or ATWS
- Block Valve Setting LOD
- Permanent Access Road
- Temporary Access Road
- Travel LOD
- Travel and Clearing LOD
- Station
- Ephemeral Stream
- Intermittent Stream
- Perennial Stream
- Pond
- PEM
- PFO
- PSS

↑  
N

0    50    100    200

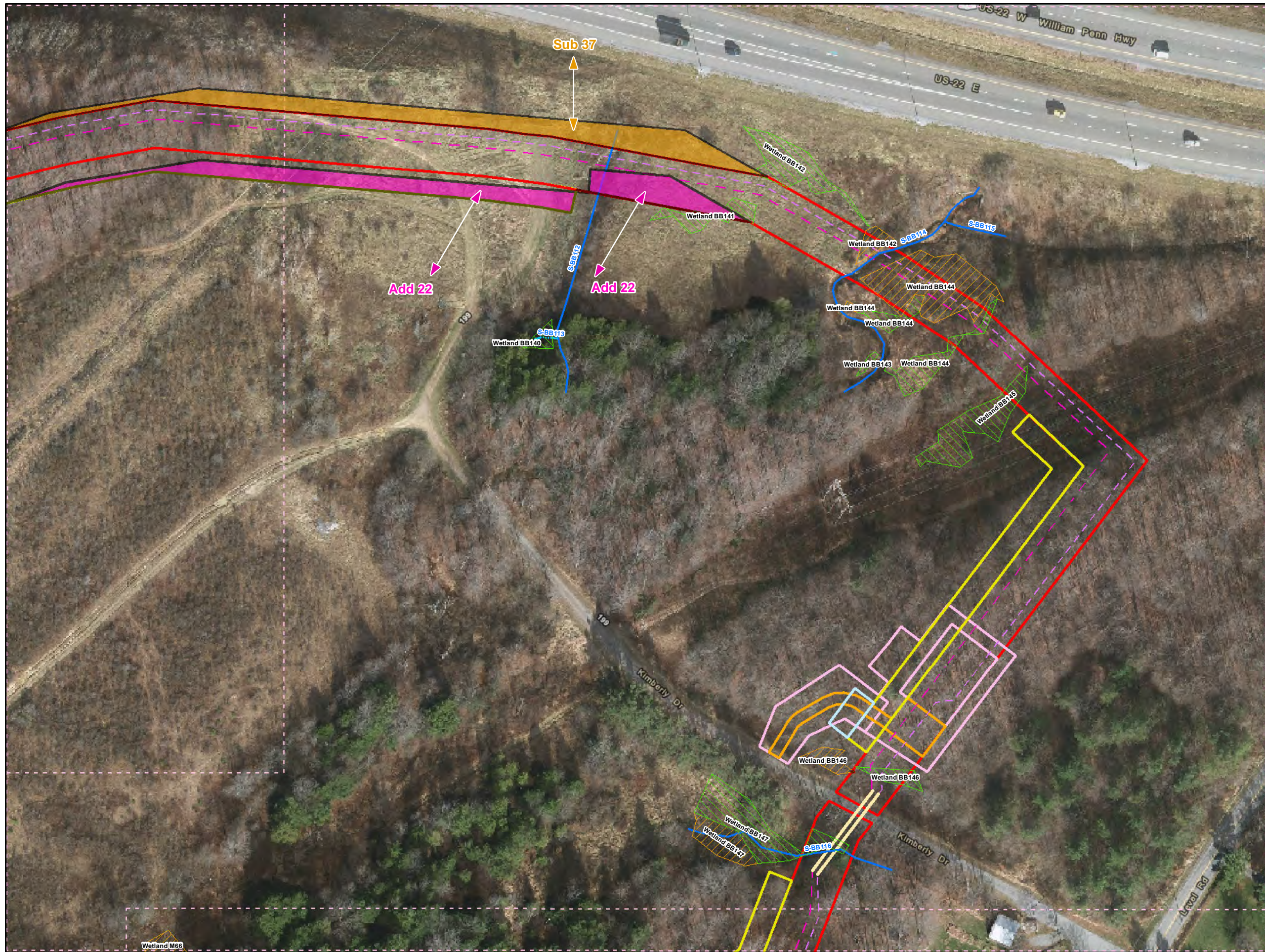
**1 inch = 100 feet**

**Workspace Changes for the Sunoco Pennsylvania Pipeline Project, Cambria County, PA.**  
81 of 101

Prepared By:	Date:
<b>TETRA TECH</b>	<b>10/2016</b>

Base Map: Sunoco, 2013-2016  
Roads: ESRI World Imagery Transportation  
Coordinate System: NAD 83 Stateplane, PA South, Feet

B:\P\GIS\PROJECTS\12205866-PPP\MAPS\CAMBRIA\COUNTY\ADDITION\_SUBTRACTION\MXD\11/10/2016.JL



**Legend**

- Added Workspace
- Removed Workspace
- Proposed 20-inch Pipeline
- Proposed 16-inch Pipeline
- Bore Path
- PPP 1 HDD
- PPP 2 HDD
- Permanent ROW
- Temporary Workspace
- Additional Temporary Workspace or ATWS
- Block Valve Setting LOD
- Permanent Access Road
- Temporary Access Road
- Travel LOD
- Travel and Clearing LOD
- Station
- Ephemeral Stream
- Intermittent Stream
- Perennial Stream
- Pond
- PEM
- PFO
- PSS

1 inch = 100 feet

**Workspace Changes for the Sunoco Pennsylvania Pipeline Project, Cambria County, PA.**  
82 of 101

<b>Prepared By:</b> 	<b>Date:</b> 10/2016
-------------------------	-------------------------

Base Map: Sunoco, 2013-2016  
Roads: ESRI World Imagery Transportation  
Coordinate System: NAD 83 Stateplane, PA South, Feet

BUF-P:\GIS\PROJECTS\1122059566-PPP\MAPS\CAMBRIA\COUNTY\ADDITION\_SUBTRACTION\MXD\11/10/2016.JL