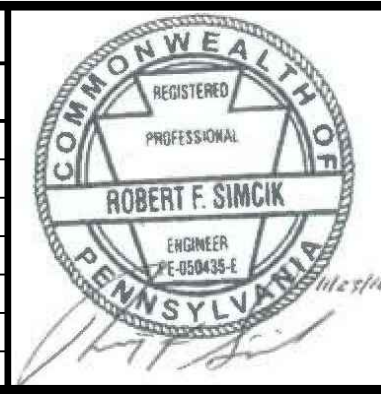


- NOTES:**
- SEE ES-0.01 & ES-0.02 FOR GENERAL NOTES & LEGEND.
  - SEE ES-0.03 FOR STREAM & WETLAND CROSSING TABLES.
  - BMP INSTALLATION TO BE ADJUSTED AS NEEDED TO ACCOMMODATE ACTUAL CONTOURS IDENTIFIED IN FIELD DURING VARIOUS PHASES OF THE PROJECT.



| REVISIONS |    |      |         |
|-----------|----|------|---------|
| NO.       | BY | DATE | REMARKS |
|           |    |      |         |
|           |    |      |         |
|           |    |      |         |



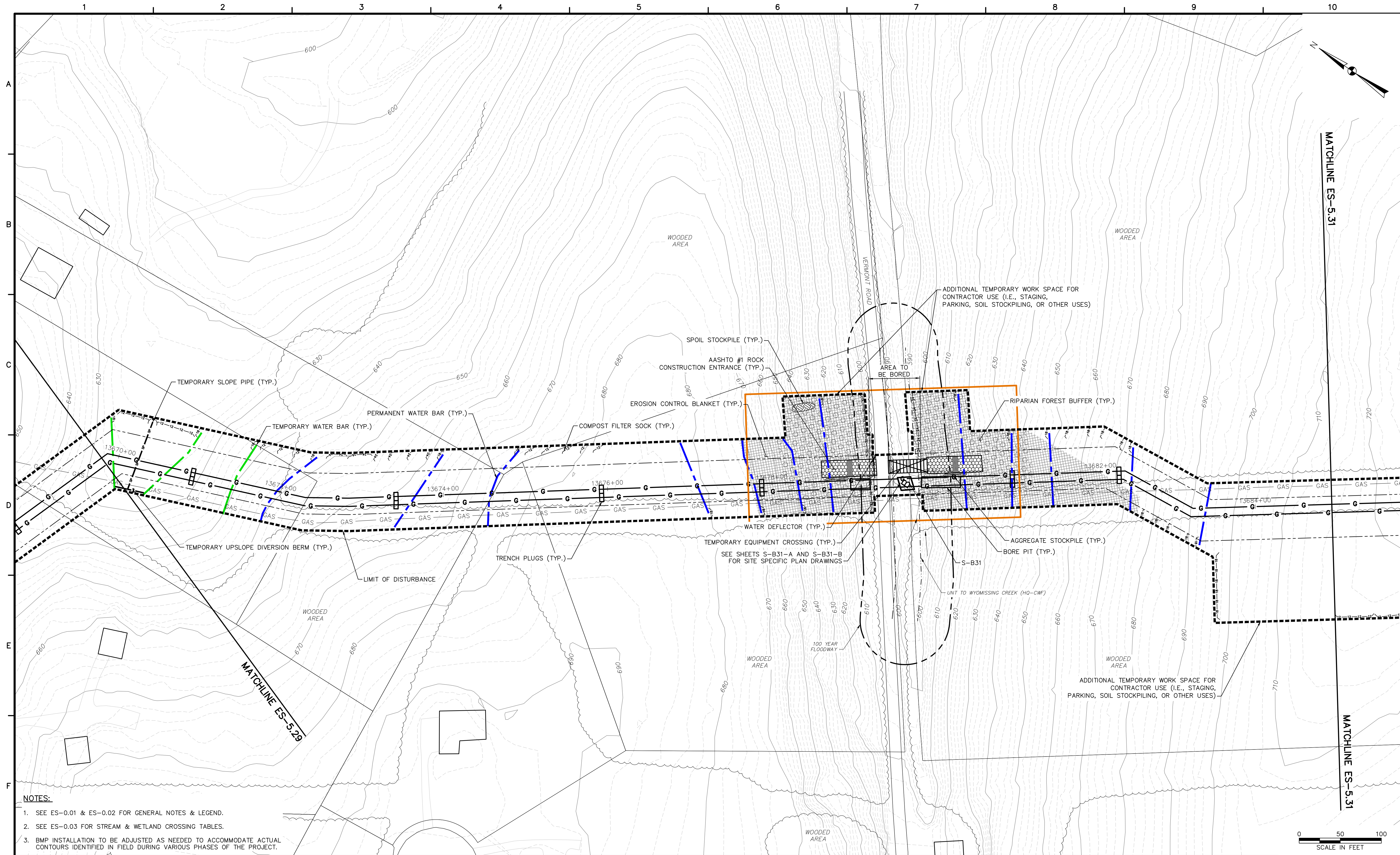
SUNOCO PIPELINE L.P.  
 PHILADELPHIA, PENNSYLVANIA  
**PENNSYLVANIA PIPELINE PROJECT**  
**CONSTRUCTION SPREAD 5**

1-20" & 1-16" PROPOSED WELDED STEEL NATURAL GAS LIQUIDS PIPELINE  
**BERKS COUNTY CONSERVATION DISTRICT**  
**EROSION & SEDIMENT CONTROL &**  
**SITE RESTORATION PLAN**  
**SHEET 1 OF 76**

|                   |                 |
|-------------------|-----------------|
| DATE:             | NOVEMBER 2016   |
| PROJECT NO.:      | 112C05958       |
| DESIGNED BY:      | JB              |
| DRAWN BY:         | GR              |
| CHECKED BY:       | RS              |
| COPYRIGHT         | TETRA TECH INC. |
| <b>ES-5.01</b>    |                 |
| SHEET 5.01 OF 102 |                 |

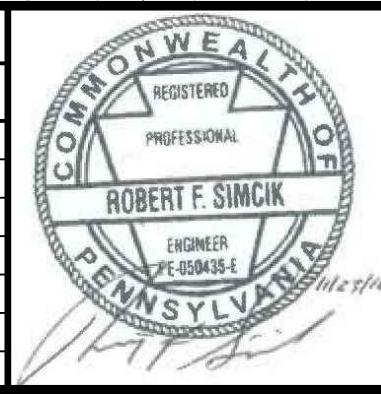






- NOTES:**
1. SEE ES-0.01 & ES-0.02 FOR GENERAL NOTES & LEGEND.
  2. SEE ES-0.03 FOR STREAM & WETLAND CROSSING TABLES.
  3. BMP INSTALLATION TO BE ADJUSTED AS NEEDED TO ACCOMMODATE ACTUAL CONTOURS IDENTIFIED IN FIELD DURING VARIOUS PHASES OF THE PROJECT.

| REVISIONS |    |      |         |
|-----------|----|------|---------|
| NO.       | BY | DATE | REMARKS |
|           |    |      |         |
|           |    |      |         |
|           |    |      |         |



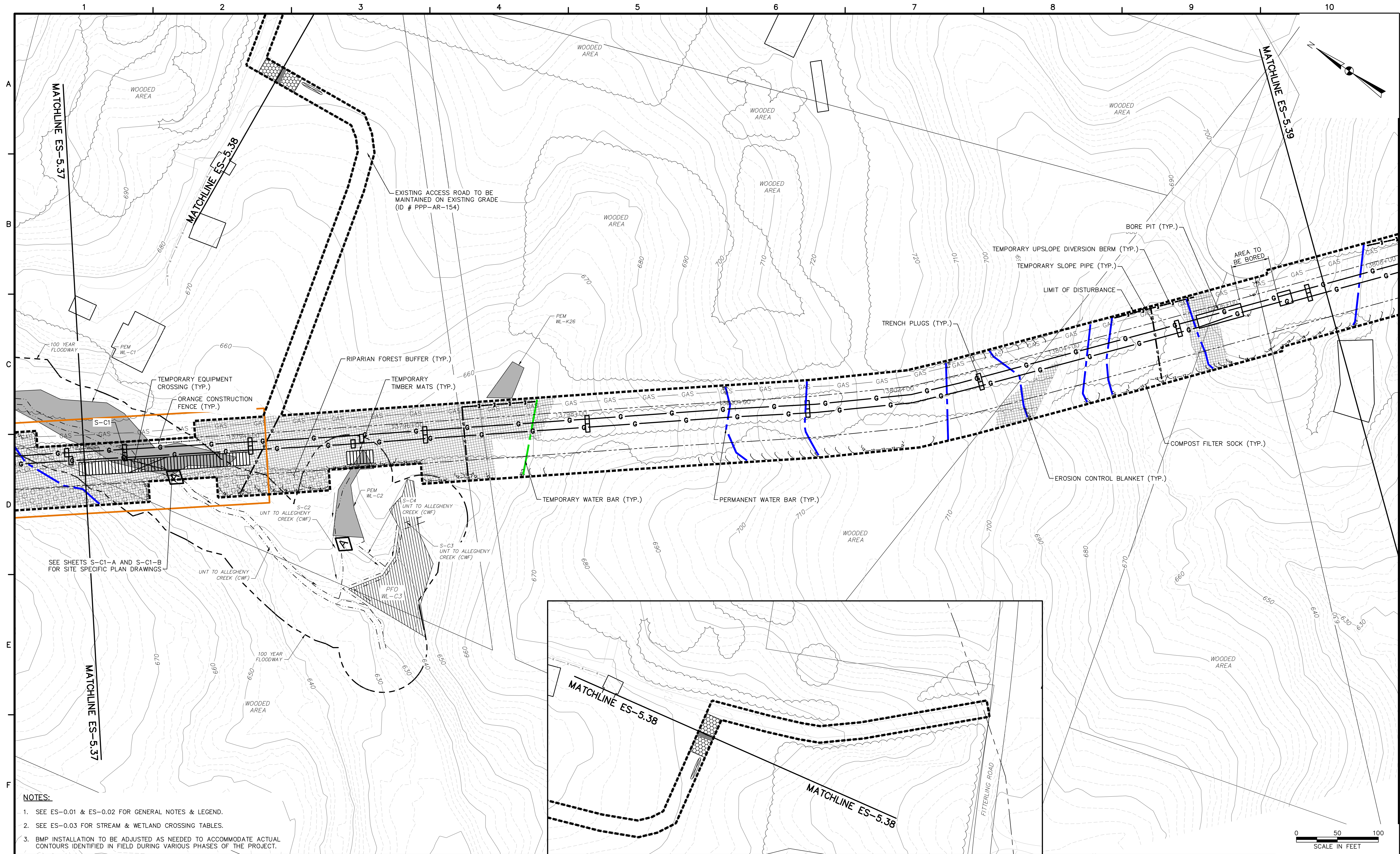
SUNOCO PIPELINE L.P.  
 PHILADELPHIA, PENNSYLVANIA  
**PENNSYLVANIA PIPELINE PROJECT  
 CONSTRUCTION SPREAD 5**

1-20" & 1-16" PROPOSED WELDED STEEL NATURAL GAS LIQUIDS PIPELINE  
 BERKS COUNTY CONSERVATION DISTRICT  
**EROSION & SEDIMENT CONTROL &  
 SITE RESTORATION PLAN**  
 SHEET 30 OF 76

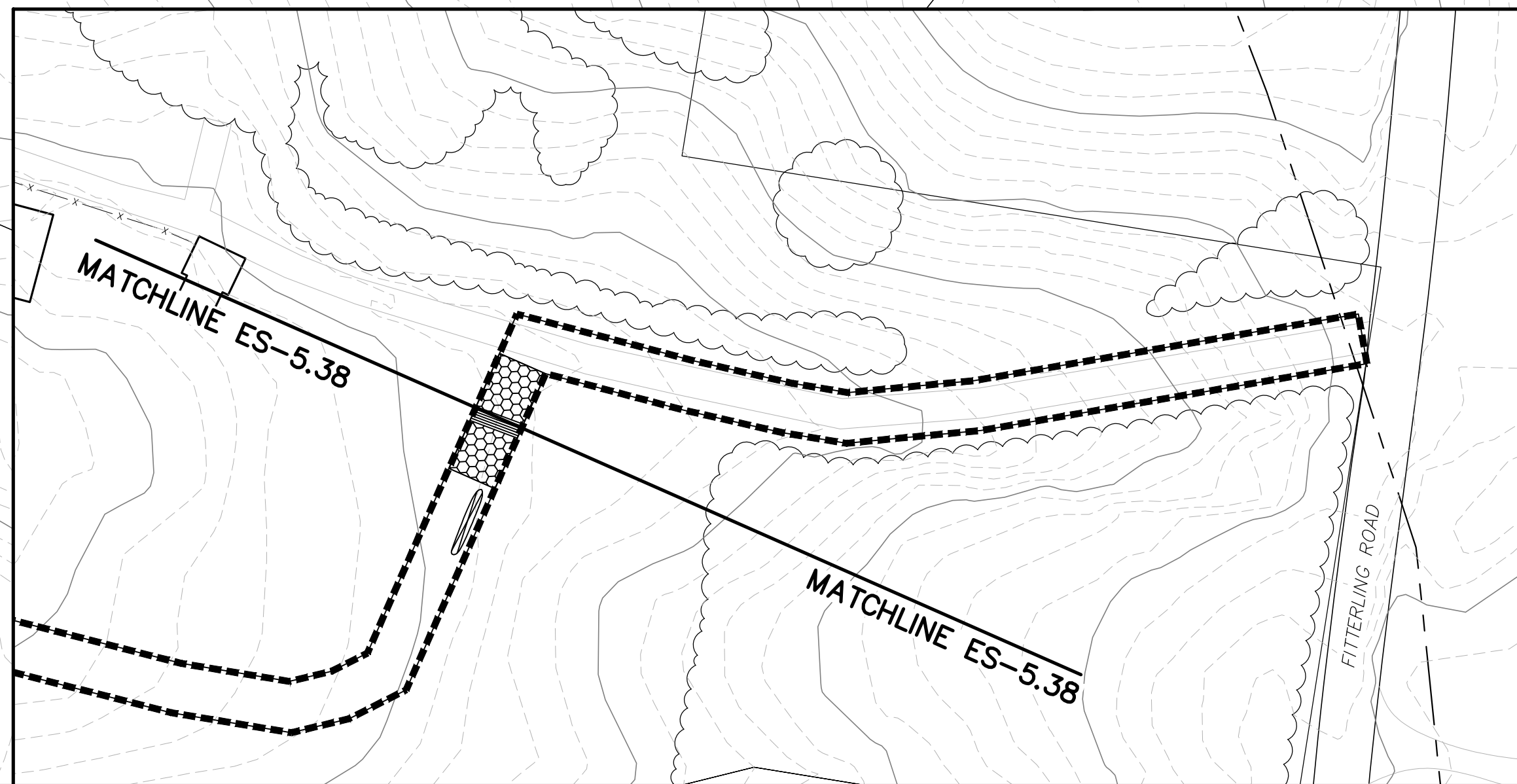
|                           |               |
|---------------------------|---------------|
| DATE:                     | NOVEMBER 2016 |
| PROJECT NO.:              | 112C05958     |
| DESIGNED BY:              | JB            |
| DRAWN BY:                 | GR            |
| CHECKED BY:               | RS            |
| COPYRIGHT TETRA TECH INC. |               |
| <b>ES-5.30</b>            |               |
| SHEET 5.30 OF 102         |               |

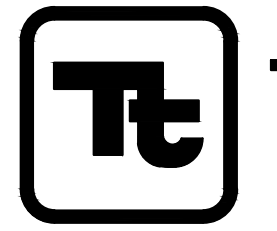
**TETRA TECH**  
 www.tetrattech.com  
 661 ANDERSEN DRIVE - FOSTER PLAZA 7  
 PITTSBURGH, PA 15220  
 T: (412) 921-7090 | F: (412) 921-4040





- NOTES:**
1. SEE ES-0.01 & ES-0.02 FOR GENERAL NOTES & LEGEND.
  2. SEE ES-0.03 FOR STREAM & WETLAND CROSSING TABLES.
  3. BMP INSTALLATION TO BE ADJUSTED AS NEEDED TO ACCOMMODATE ACTUAL CONTOURS IDENTIFIED IN FIELD DURING VARIOUS PHASES OF THE PROJECT.



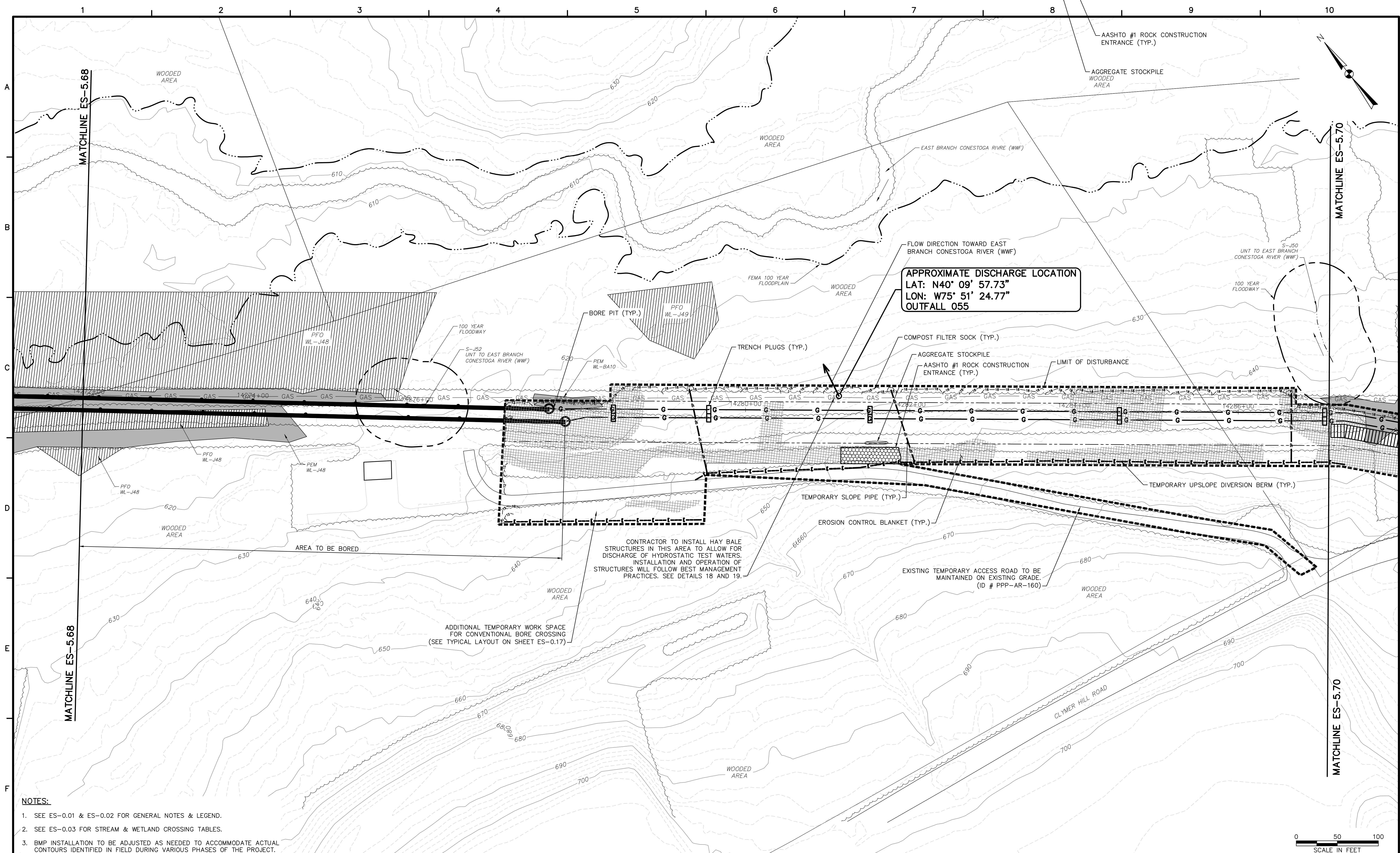
|  <b>TETRA TECH</b><br>www.tetrattech.com<br>661 ANDERSEN DRIVE - FOSTER PLAZA 7<br>PITTSBURGH, PA 15220<br>T: (412) 921-7090   F: (412) 921-4040 | <b>REVISIONS</b> |    |      |         |
|---|------------------|----|------|---------|
|   | NO.              | BY | DATE | REMARKS |
|   |                  |    |      |         |
|   |                  |    |      |         |

**SUNOCO PIPELINE L.P.**  
 PHILADELPHIA, PENNSYLVANIA  
**PENNSYLVANIA PIPELINE PROJECT**  
 CONSTRUCTION SPREAD 5

1-20" & 1-16" PROPOSED WELDED STEEL NATURAL GAS LIQUIDS PIPELINE  
**BERKS COUNTY CONSERVATION DISTRICT**  
**EROSION & SEDIMENT CONTROL &**  
**SITE RESTORATION PLAN**  
**SHEET 38 OF 76**

|                           |
|---------------------------|
| DATE: NOVEMBER 2016       |
| PROJECT NO.: 112C05958    |
| DESIGNED BY: JB           |
| DRAWN BY: GR              |
| CHECKED BY: RS            |
| COPYRIGHT TETRA TECH INC. |
| <b>ES-5.38</b>            |
| SHEET 38 OF 102           |



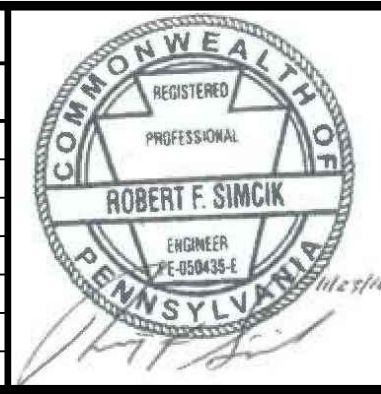


- NOTES:**
1. SEE ES-0.01 & ES-0.02 FOR GENERAL NOTES & LEGEND.
  2. SEE ES-0.03 FOR STREAM & WETLAND CROSSING TABLES.
  3. BMP INSTALLATION TO BE ADJUSTED AS NEEDED TO ACCOMMODATE ACTUAL CONTOURS IDENTIFIED IN FIELD DURING VARIOUS PHASES OF THE PROJECT.



**TETRA TECH**  
www.tetrattech.com  
661 ANDERSEN DRIVE - FOSTER PLAZA 7  
PITTSBURGH, PA 15220  
T: (412) 921-7090 | F: (412) 921-4040

| REVISIONS |    |      |         |
|-----------|----|------|---------|
| NO.       | BY | DATE | REMARKS |
|           |    |      |         |
|           |    |      |         |
|           |    |      |         |



SUNOCO PIPELINE L.P.  
PHILADELPHIA, PENNSYLVANIA  
**PENNSYLVANIA PIPELINE PROJECT  
CONSTRUCTION SPREAD 5**

1-20" & 1-16" PROPOSED WELDED STEEL NATURAL GAS LIQUIDS PIPELINE  
**BERKS COUNTY CONSERVATION DISTRICT  
EROSION & SEDIMENT CONTROL &  
SITE RESTORATION PLAN  
SHEET 69 OF 76**

|                           |               |
|---------------------------|---------------|
| DATE:                     | NOVEMBER 2016 |
| PROJECT NO.:              | 112C05958     |
| DESIGNED BY:              | JB            |
| DRAWN BY:                 | GR            |
| CHECKED BY:               | RS            |
| COPYRIGHT TETRA TECH INC. |               |
| <b>ES-5.69</b>            |               |
| SHEET 5.69 OF 102         |               |

