

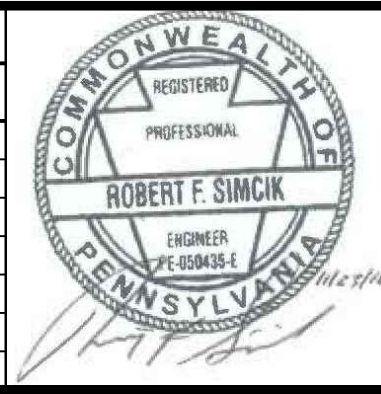
EARTH DISTURBANCE TO BE MINIMIZED TO THE AREA REQUIRED FOR CONSTRUCTION. TOPSOIL TO BE STRIPPED AND STOCKPILED WHERE EARTH DISTURBANCE IS REQUIRED.

ADDITIONAL TEMPORARY WORK SPACE FOR CONTRACTOR USE (I.E., STAGING, PARKING, SOIL STOCKPILING, OR OTHER USES).

SEE SHEETS S-B38-A AND S-B38-B FOR SITE SPECIFIC PLANS

TETRA TECH
www.tetrattech.com
661 ANDERSEN DRIVE - FOSTER PLAZA 7
PITTSBURGH, PA 15220
T: (412) 921-7090 | F: (412) 921-4040

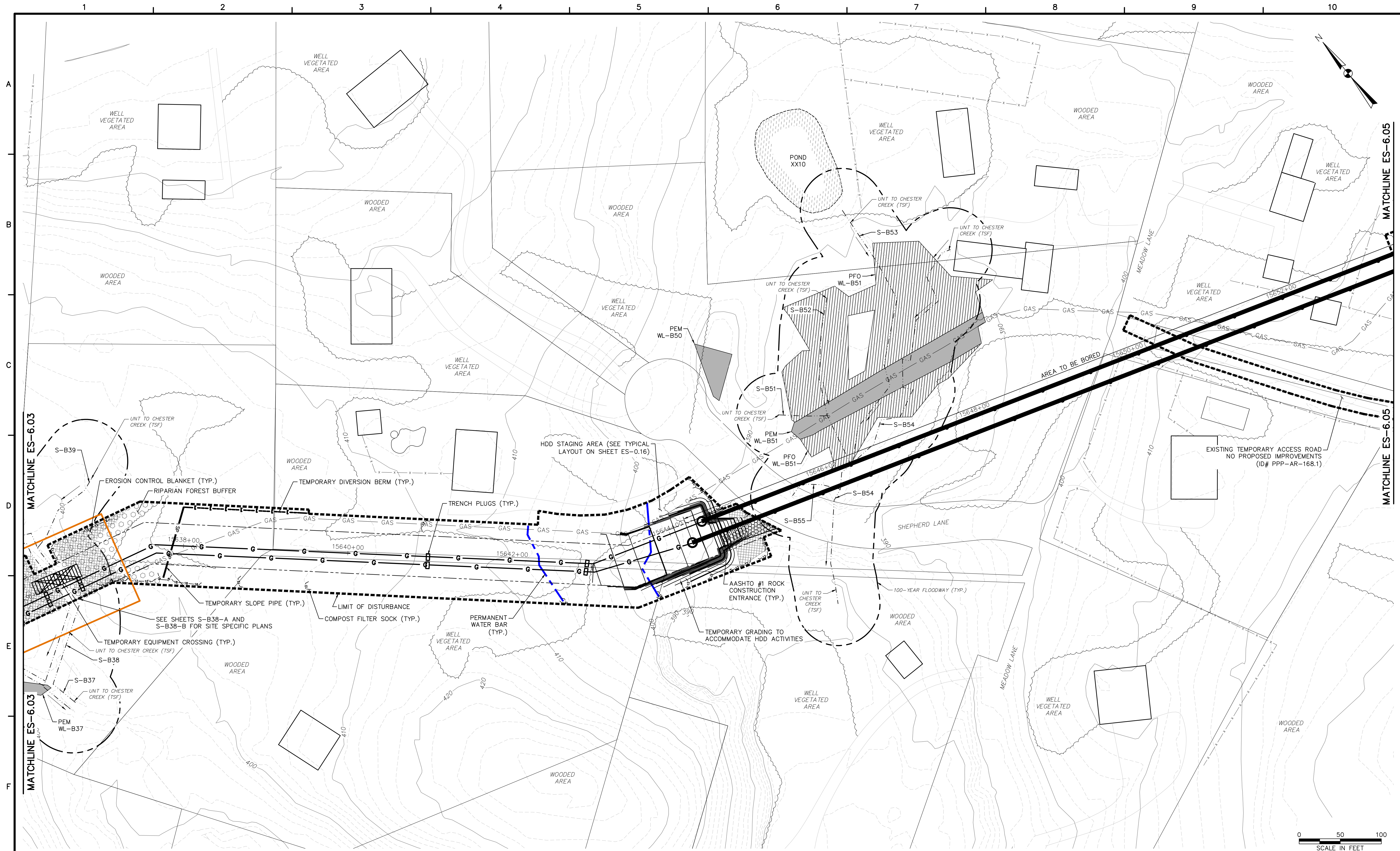
REVISIONS			
NO.	BY	DATE	REMARKS



SUNOCO PIPELINE L.P.
SINKING SPRING, PENNSYLVANIA
**PENNSYLVANIA PIPELINE PROJECT
CONSTRUCTION SPREAD 6**

1-20" & 1-16" WELDED STEEL NATURAL GAS PIPELINES
DELAWARE COUNTY CONSERVATION DISTRICT
EROSION & SEDIMENT CONTROL &
SITE RESTORATION PLAN
SHEET 3 OF 35

DATE:	11/4/16
PROJECT NO.:	112C05958
DESIGNED BY:	JB
DRAWN BY:	BH
CHECKED BY:	RS
COPYRIGHT TETRA TECH INC.	
ES-6.03	
SHEET 6.03 OF 60	

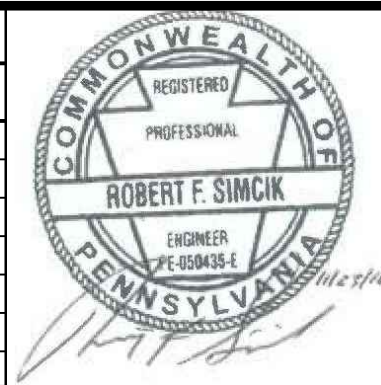


0 50 100
SCALE IN FEET



661 ANDERSEN DRIVE - FOSTER PLAZA 7
PITTSBURGH, PA 15220
T: (412) 921-7090 | F: (412) 921-4040

REVISIONS			
NO.	BY	DATE	REMARKS

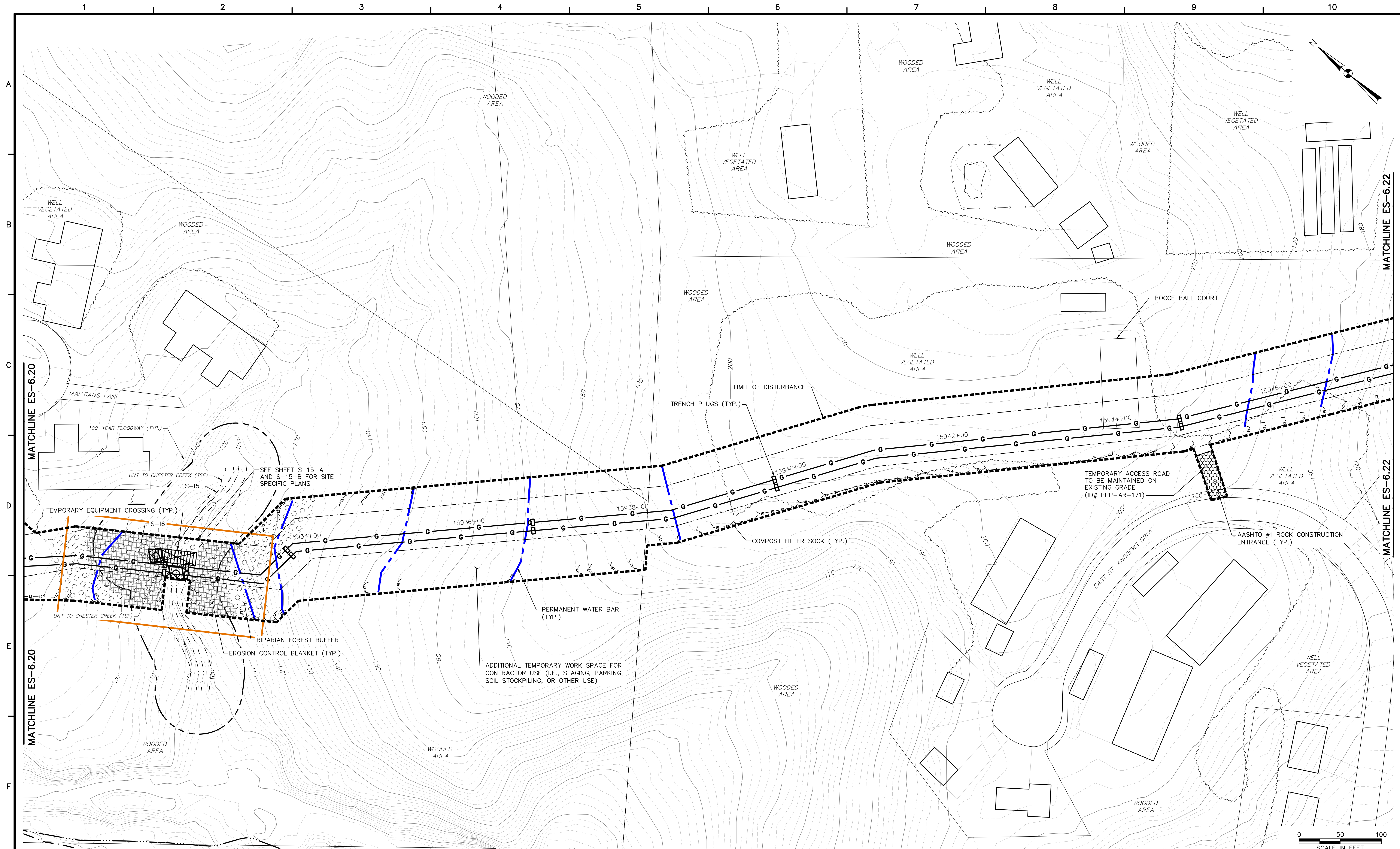


SUNOCO PIPELINE L.P.
SINKING SPRING, PENNSYLVANIA
PENNSYLVANIA PIPELINE PROJECT
CONSTRUCTION SPREAD 6

1-20" & 1-16" WELDED STEEL NATURAL GAS PIPELINES
DELAWARE COUNTY CONSERVATION DISTRICT
EROSION & SEDIMENT CONTROL &
SITE RESTORATION PLAN
SHEET 4 OF 35

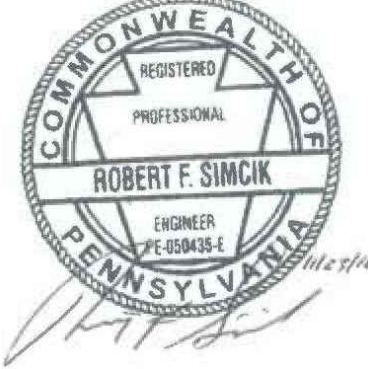
DATE:	11/4/16
PROJECT NO.:	112C05958
DESIGNED BY:	JB
DRAWN BY:	BH
CHECKED BY:	RS
COPYRIGHT TETRA TECH INC.	
ES-6.04	
SHEET 6.04 OF 60	

R:\Marcellus Shale Projects\Sunoco\9958 - Penn Pipeline Project\18 - Delaware\E&S\9958ES006.04.dwg P11 BDN.HOPPE 2/1/2017 3:10:28 PM



661 ANDERSEN DRIVE - FOSTER PLAZA 7
PITTSBURGH, PA 15220
T: (412) 921-7090 | F: (412) 921-4040

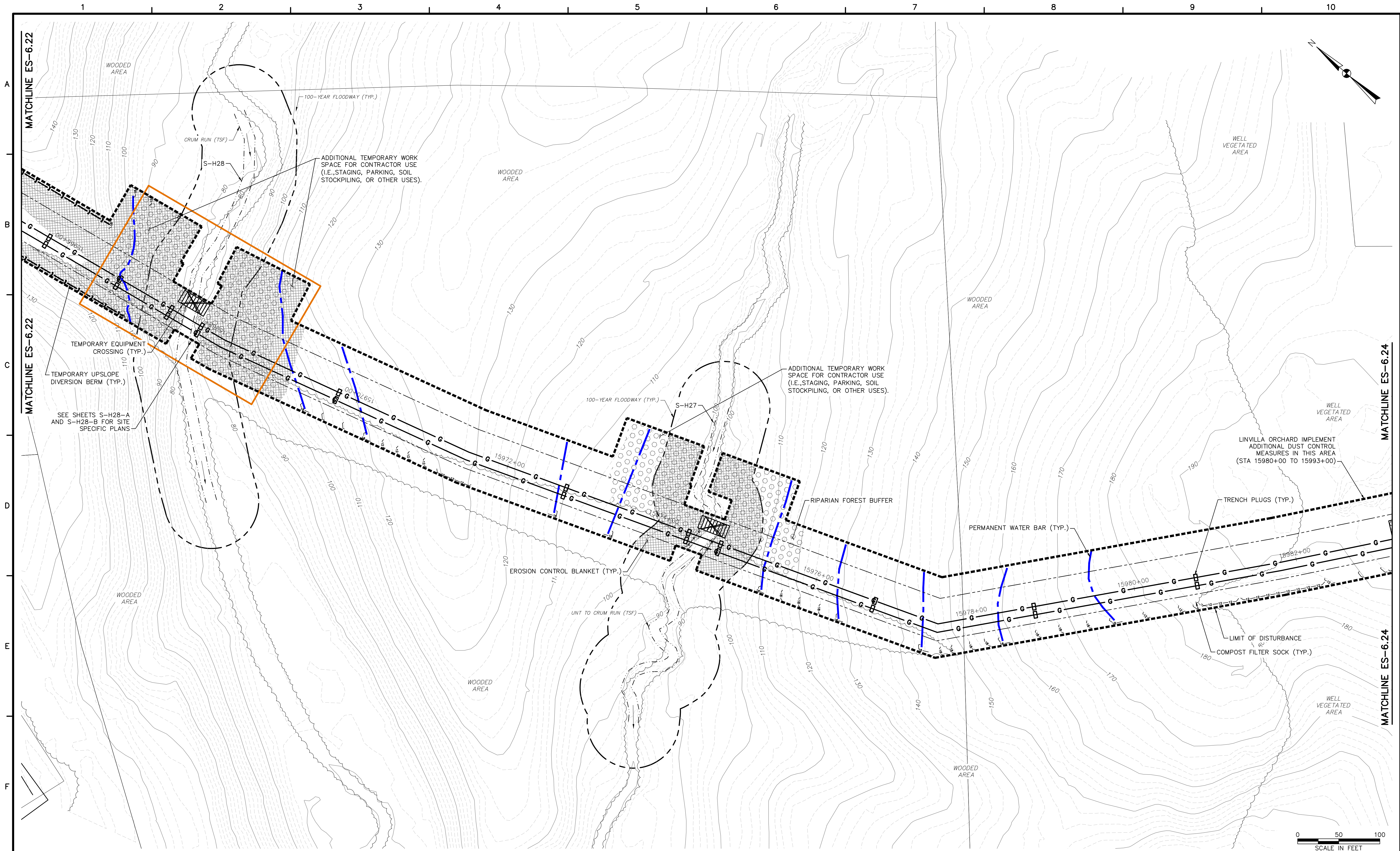
REVISIONS			
NO.	BY	DATE	REMARKS



SUNOCO PIPELINE L.P.
SINKING SPRING, PENNSYLVANIA
PENNSYLVANIA PIPELINE PROJECT
CONSTRUCTION SPREAD 6

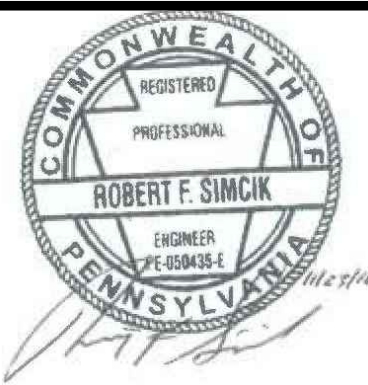
1-20" & 1-16" WELDED STEEL NATURAL GAS PIPELINES
DELAWARE COUNTY CONSERVATION DISTRICT
EROSION & SEDIMENT CONTROL &
SITE RESTORATION PLAN
SHEET 21 OF 35

DATE:	11/4/16
PROJECT NO.:	112C05958
DESIGNED BY:	JB
DRAWN BY:	BH
CHECKED BY:	RS
COPYRIGHT TETRA TECH INC.	
ES-6.21	
SHEET 6.21 OF 60	



661 ANDERSEN DRIVE - FOSTER PLAZA 7
PITTSBURGH, PA 15220
T: (412) 921-7090 | F: (412) 921-4040

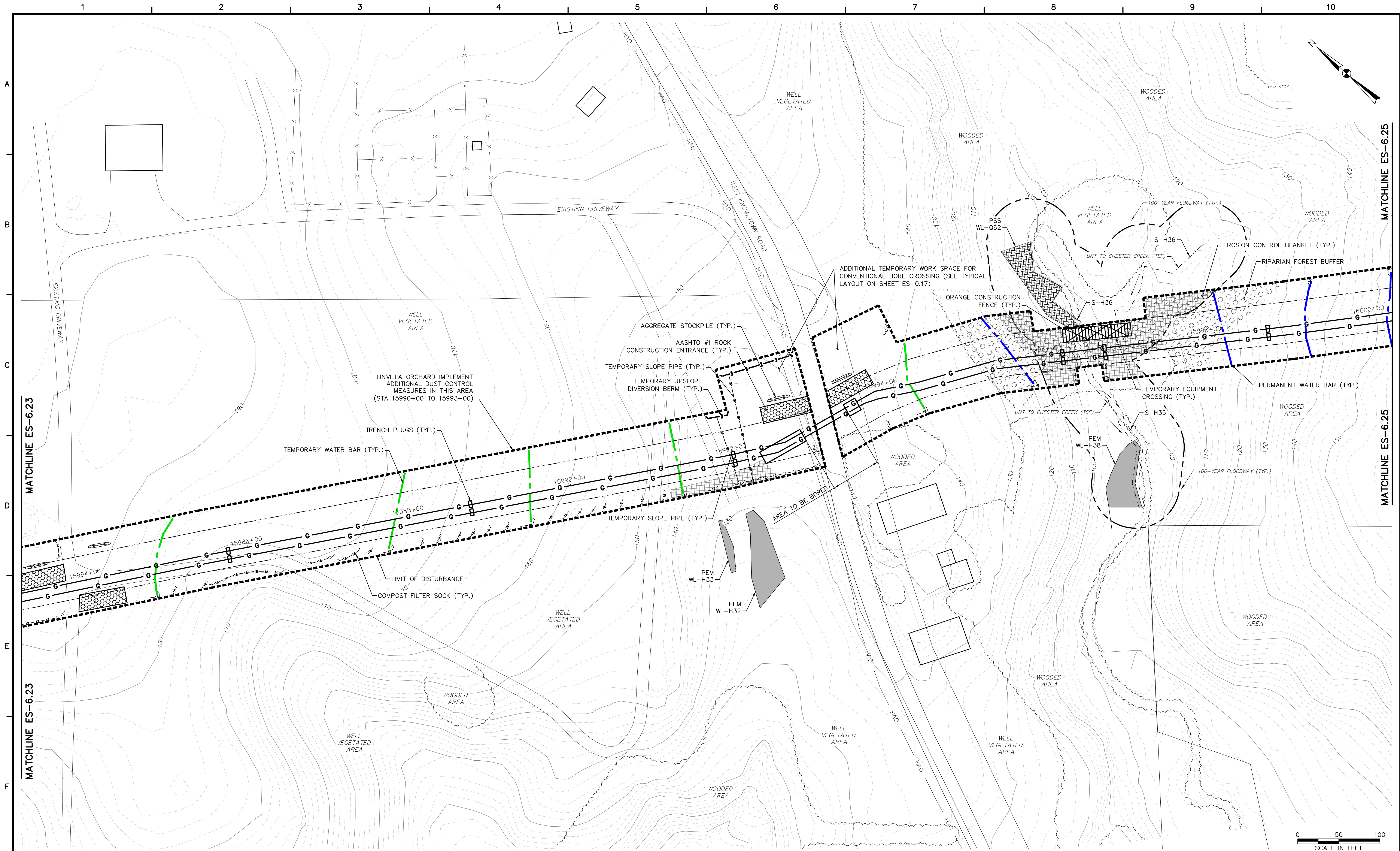
REVISIONS			
NO.	BY	DATE	REMARKS



SUNOCO PIPELINE L.P.
SINKING SPRING, PENNSYLVANIA
PENNSYLVANIA PIPELINE PROJECT
CONSTRUCTION SPREAD 6

1-20" & 1-16" WELDED STEEL NATURAL GAS PIPELINES
DELAWARE COUNTY CONSERVATION DISTRICT
EROSION & SEDIMENT CONTROL &
SITE RESTORATION PLAN
SHEET 23 OF 35

DATE:	11/4/16
PROJECT NO.:	112C05958
DESIGNED BY:	JB
DRAWN BY:	BH
CHECKED BY:	RS
COPYRIGHT TETRA TECH INC.	
ES-6.23	
SHEET 6.23 OF 60	



MATCHLINE ES-6.23

MATCHLINE ES-6.23

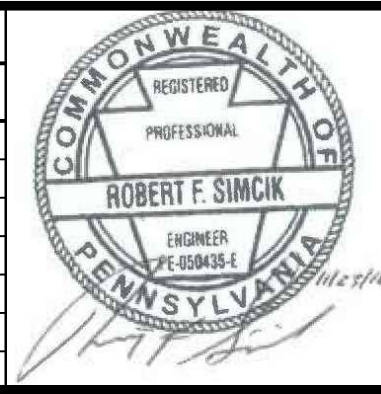
MATCHLINE ES-6.25

MATCHLINE ES-6.25



TETRA TECH
www.tetrattech.com
661 ANDERSEN DRIVE - FOSTER PLAZA 7
PITTSBURGH, PA 15220
T: (412) 921-7090 | F: (412) 921-4040

REVISIONS			
NO.	BY	DATE	REMARKS

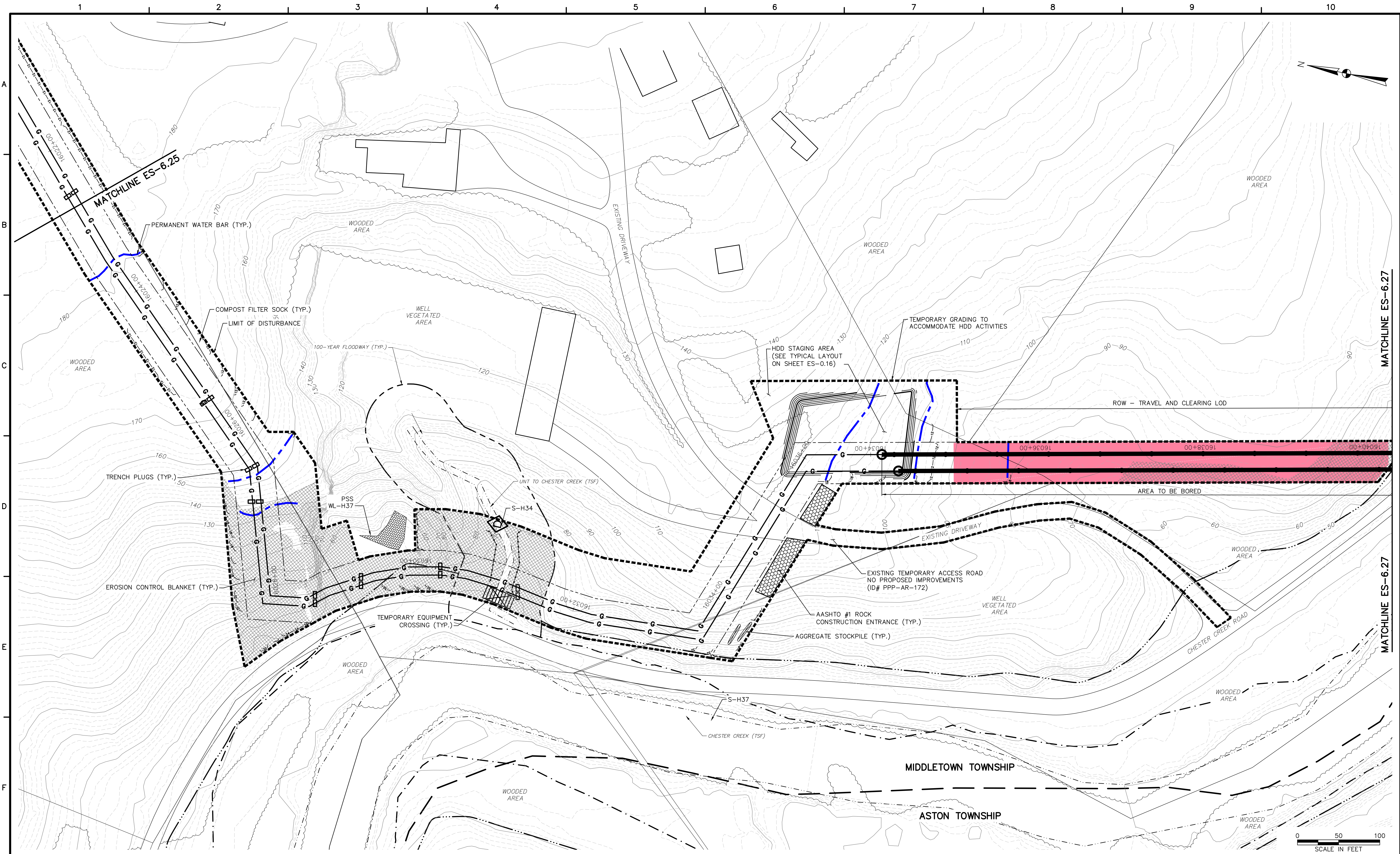


SUNOCO PIPELINE L.P.
SINKING SPRING, PENNSYLVANIA
PENNSYLVANIA PIPELINE PROJECT
CONSTRUCTION SPREAD 6

1-20" & 1-16" WELDED STEEL NATURAL GAS PIPELINES
DELAWARE COUNTY CONSERVATION DISTRICT
EROSION & SEDIMENT CONTROL &
SITE RESTORATION PLAN
SHEET 24 OF 35

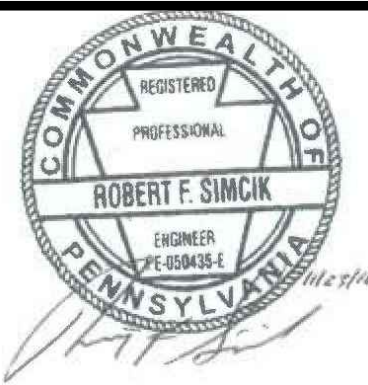
DATE:	11/4/16
PROJECT NO.:	112C05958
DESIGNED BY:	JB
DRAWN BY:	BH
CHECKED BY:	RS
COPYRIGHT TETRA TECH INC.	
ES-6.24	
SHEET 6.24 OF 60	

R:_Marcellus Shale Projects\Sunoco\9588 - Penn Pipeline Project\18 - Delaware\ES\9588ES006.24.dwg PLOT LOSTRANDER 11/22/2016 3:36:14 PM



661 ANDERSEN DRIVE - FOSTER PLAZA 7
PITTSBURGH, PA 15220
T: (412) 921-7090 | F: (412) 921-4040

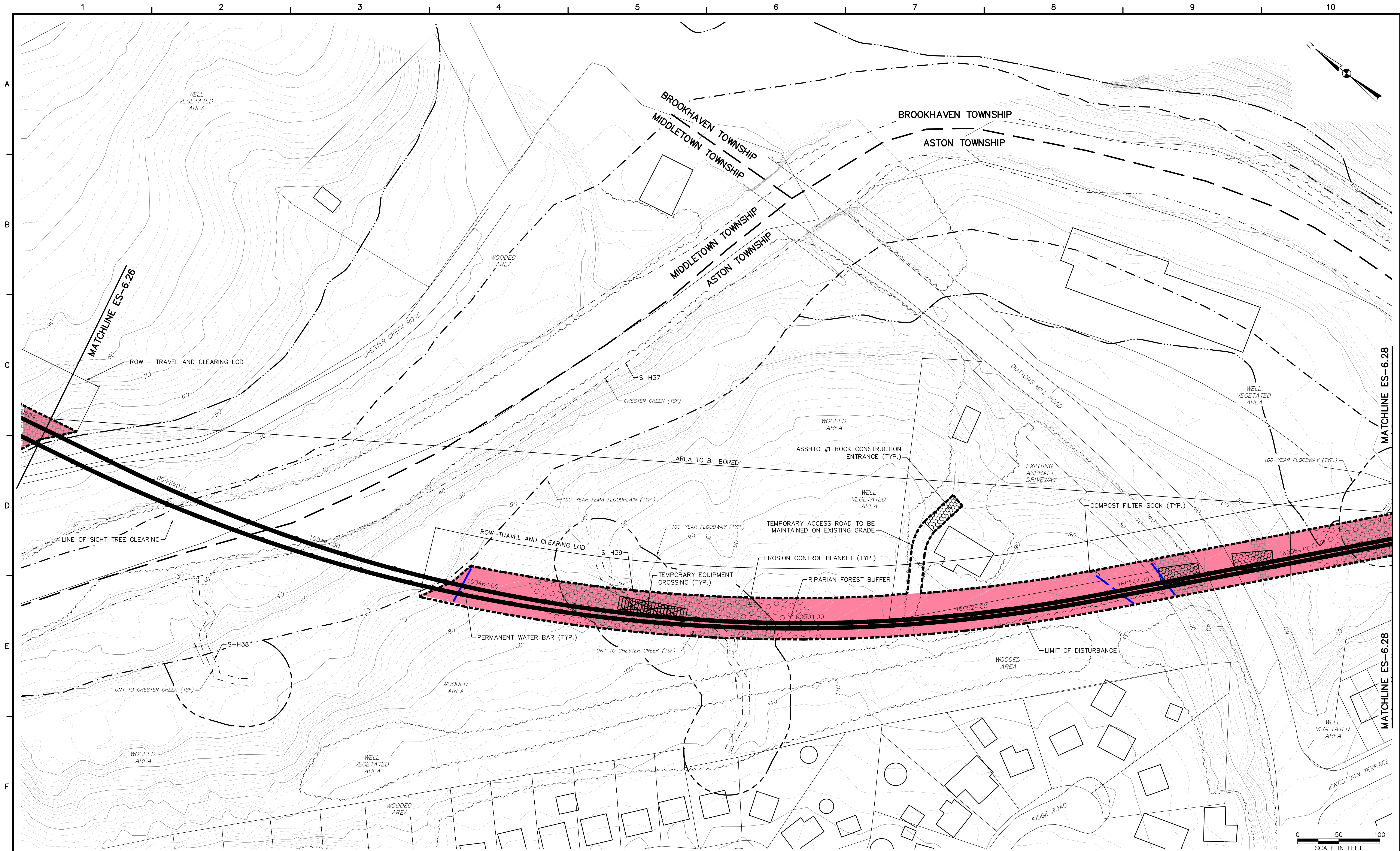
REVISIONS			
NO.	BY	DATE	REMARKS



SUNOCO PIPELINE L.P.
SINKING SPRING, PENNSYLVANIA
PENNSYLVANIA PIPELINE PROJECT
CONSTRUCTION SPREAD 6

1-20" & 1-16" WELDED STEEL NATURAL GAS PIPELINES
DELAWARE COUNTY CONSERVATION DISTRICT
EROSION & SEDIMENT CONTROL &
SITE RESTORATION PLAN
SHEET 26 OF 35

DATE:	11/4/16
PROJECT NO.:	112C05958
DESIGNED BY:	JB
DRAWN BY:	BH
CHECKED BY:	RS
COPYRIGHT TETRA TECH INC.	
ES-6.26	
SHEET 26 OF 35	



661 ANDERSEN DRIVE - FOSTER PLAZA 7
PITTSBURGH, PA 15220
T: (412) 921-7090 | F: (412) 921-4040

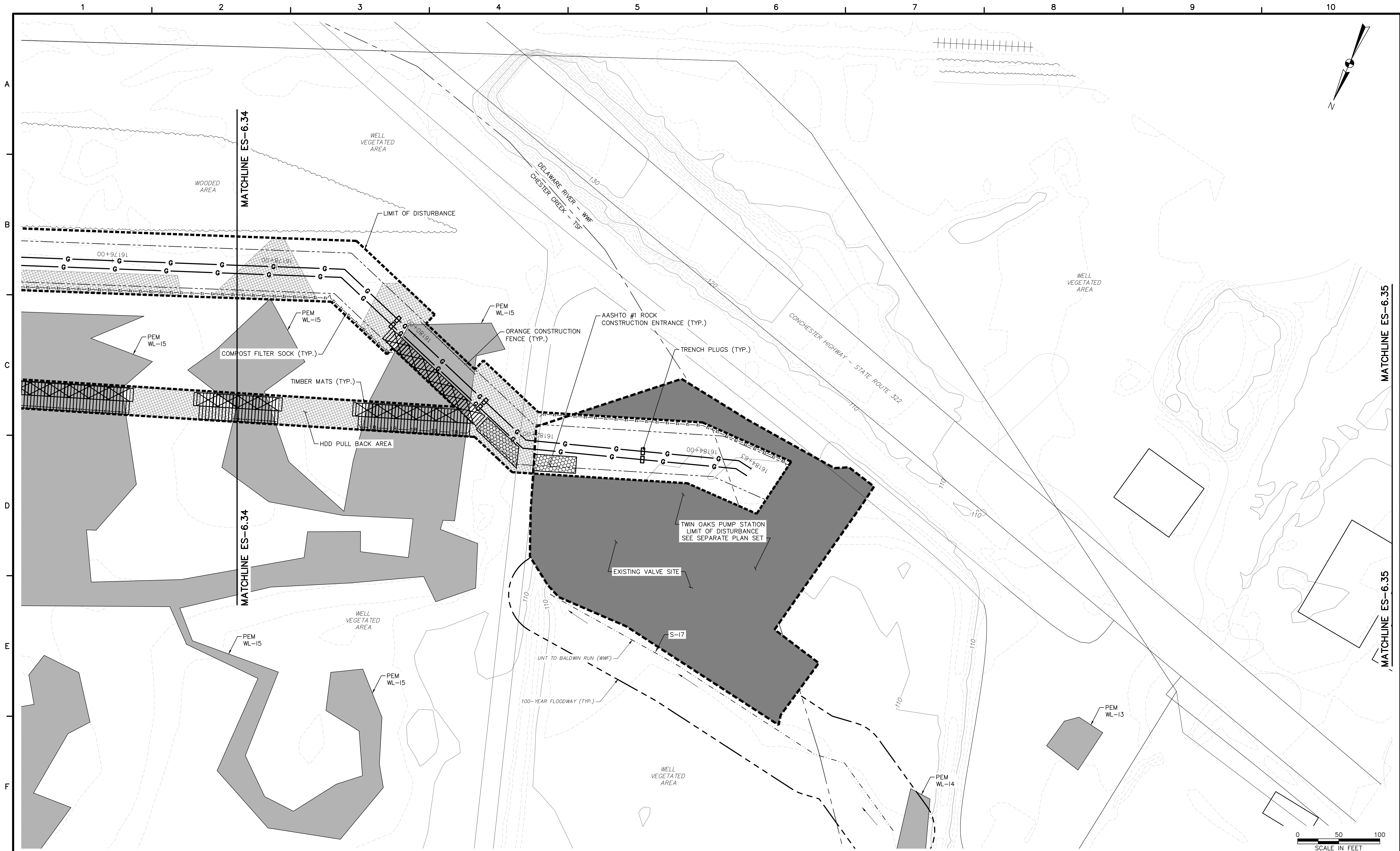
REVISIONS			
NO.	BY	DATE	REMARKS



SUNOCO PIPELINE L.P.
SINKING SPRING, PENNSYLVANIA
**PENNSYLVANIA PIPELINE PROJECT
CONSTRUCTION SPREAD 6**

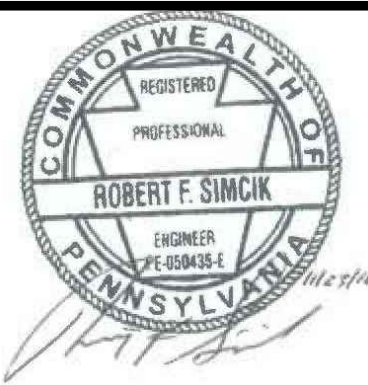
1-20" & 1-16" WELDED STEEL NATURAL GAS PIPELINES
DELAWARE COUNTY CONSERVATION DISTRICT
EROSION & SEDIMENT CONTROL &
SITE RESTORATION PLAN
SHEET 27 OF 35

DATE:	11/4/16
PROJECT NO.:	112C05958
DESIGNED BY:	JB
DRAWN BY:	BH
CHECKED BY:	RS
COPYRIGHT TETRA TECH INC.	
ES-6.27	
SHEET 6.27 OF 60	



661 ANDERSON DRIVE - FOSTER PLAZA 7
PITTSBURGH, PA 15220
T: (412) 921-7090 | F: (412) 921-4040

REVISIONS			
NO.	BY	DATE	REMARKS



SUNOCO PIPELINE L.P.
SINKING SPRING, PENNSYLVANIA
PENNSYLVANIA PIPELINE PROJECT
CONSTRUCTION SPREAD 6

1-20" & 1-16" WELDED STEEL NATURAL GAS PIPELINES
DELAWARE COUNTY CONSERVATION DISTRICT
EROSION & SEDIMENT CONTROL &
SITE RESTORATION PLAN
SHEET 35 OF 35

DATE:	11/4/16
PROJECT NO.:	112C05958
DESIGNED BY:	JB
DRAWN BY:	BH
CHECKED BY:	RS
COPYRIGHT TETRA TECH INC.	
ES-6.35	
SHEET 35 OF 60	