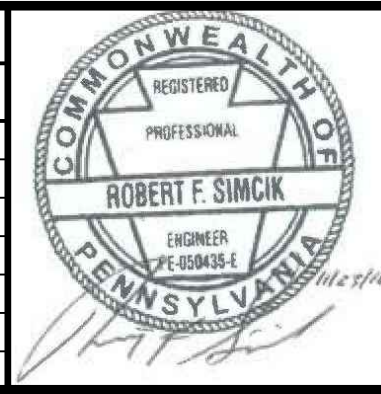


- NOTES:**
- SEE ES-0.01 & ES-0.02 FOR GENERAL NOTES & LEGEND.
 - SEE ES-0.03 FOR STREAM & WETLAND CROSSING TABLES.
 - BMP INSTALLATION TO BE ADJUSTED AS NEEDED TO ACCOMMODATE ACTUAL CONTOURS IDENTIFIED IN FIELD DURING VARIOUS PHASES OF THE PROJECT.

TETRA TECH
www.tetrattech.com
661 ANDERSEN DRIVE - FOSTER PLAZA 7
PITTSBURGH, PA 15220
T: (412) 921-7090 | F: (412) 921-4040

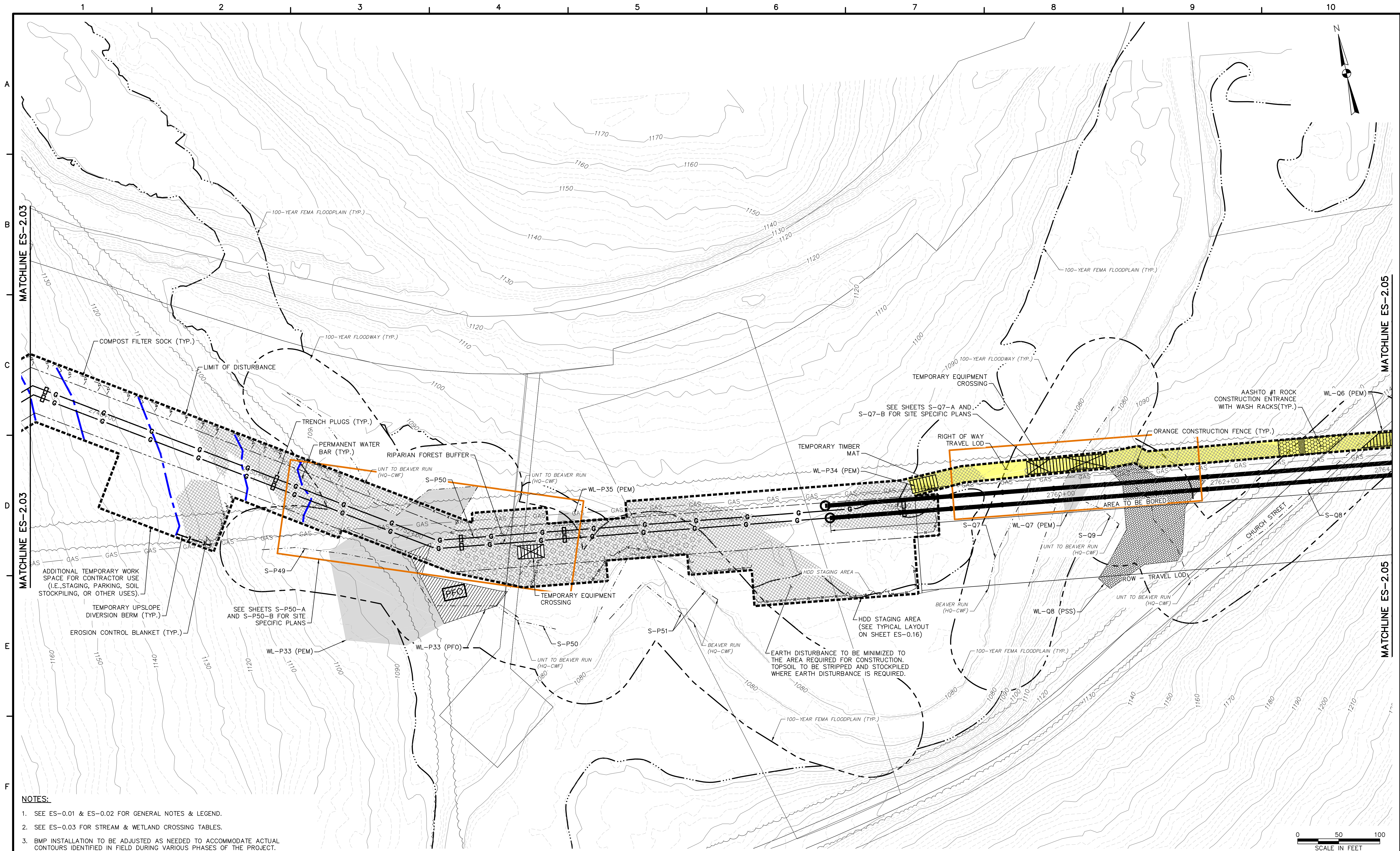
REVISIONS			
NO.	BY	DATE	REMARKS



**SUNOCO PIPELINE L.P.
SINKING SPRING, PENNSYLVANIA
PENNSYLVANIA PIPELINE PROJECT
CONSTRUCTION SPREAD 2**

1-16" & 1-20" PROPOSED WELDED STEEL NATURAL GAS LIQUIDS PIPELINES
WESTMORELAND COUNTY CONSERVATION DISTRICT
EROSION & SEDIMENT CONTROL &
SITE RESTORATION PLAN
SHEET 1 OF 47

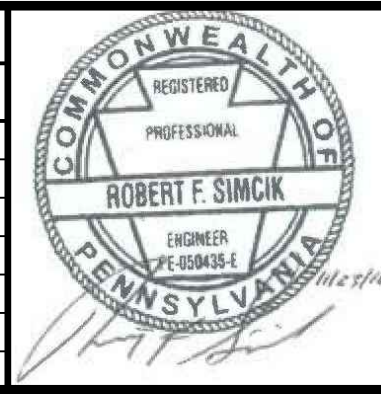
DATE:	NOVEMBER 2016
PROJECT NO.:	112C05958
DESIGNED BY:	JB
DRAWN BY:	BH
CHECKED BY:	RS
COPYRIGHT TETRA TECH INC.	
ES-2.01	
SHEET 2.01 OF 74	



- NOTES:**
1. SEE ES-0.01 & ES-0.02 FOR GENERAL NOTES & LEGEND.
 2. SEE ES-0.03 FOR STREAM & WETLAND CROSSING TABLES.
 3. BMP INSTALLATION TO BE ADJUSTED AS NEEDED TO ACCOMMODATE ACTUAL CONTOURS IDENTIFIED IN FIELD DURING VARIOUS PHASES OF THE PROJECT.

TETRA TECH
 www.tetrattech.com
 661 ANDERSEN DRIVE - FOSTER PLAZA 7
 PITTSBURGH, PA 15220
 T: (412) 921-7090 | F: (412) 921-4040

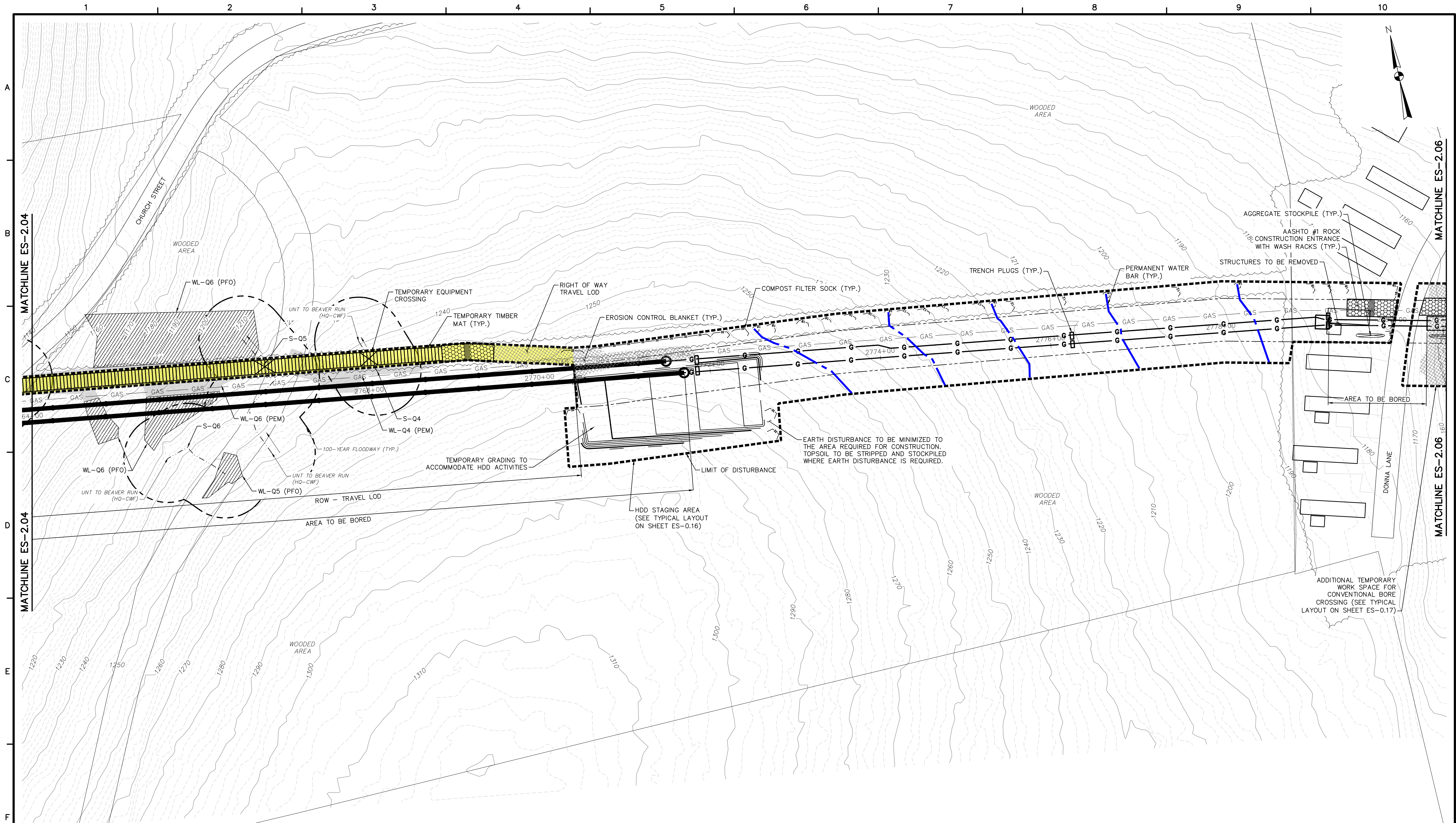
REVISIONS			
NO.	BY	DATE	REMARKS



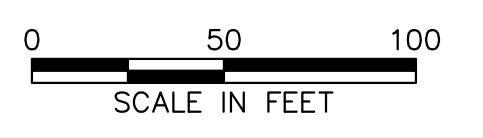
**SUNOCO PIPELINE L.P.
 SINKING SPRING, PENNSYLVANIA
 PENNSYLVANIA PIPELINE PROJECT
 CONSTRUCTION SPREAD 2**

1-16" & 1-20" PROPOSED WELDED STEEL NATURAL GAS LIQUIDS PIPELINES
 WESTMORELAND COUNTY CONSERVATION DISTRICT
 EROSION & SEDIMENT CONTROL &
 SITE RESTORATION PLAN
 SHEET 4 OF 47

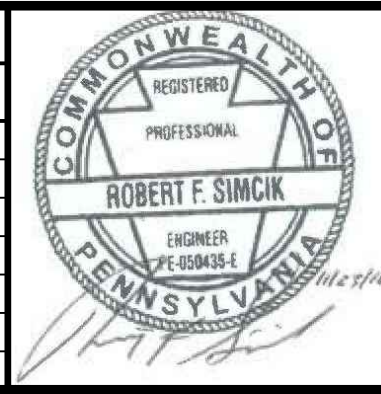
DATE:	NOVEMBER 2016
PROJECT NO.:	112C05958
DESIGNED BY:	JB
DRAWN BY:	BH
CHECKED BY:	RS
COPYRIGHT TETRA TECH INC.	
ES-2.04	
SHEET 2.04 OF 74	



- NOTES:**
1. SEE ES-0.01 & ES-0.02 FOR GENERAL NOTES & LEGEND.
 2. SEE ES-0.03 FOR STREAM & WETLAND CROSSING TABLES.
 3. BMP INSTALLATION TO BE ADJUSTED AS NEEDED TO ACCOMMODATE ACTUAL CONTOURS IDENTIFIED IN FIELD DURING VARIOUS PHASES OF THE PROJECT.



REVISIONS			
NO.	BY	DATE	REMARKS

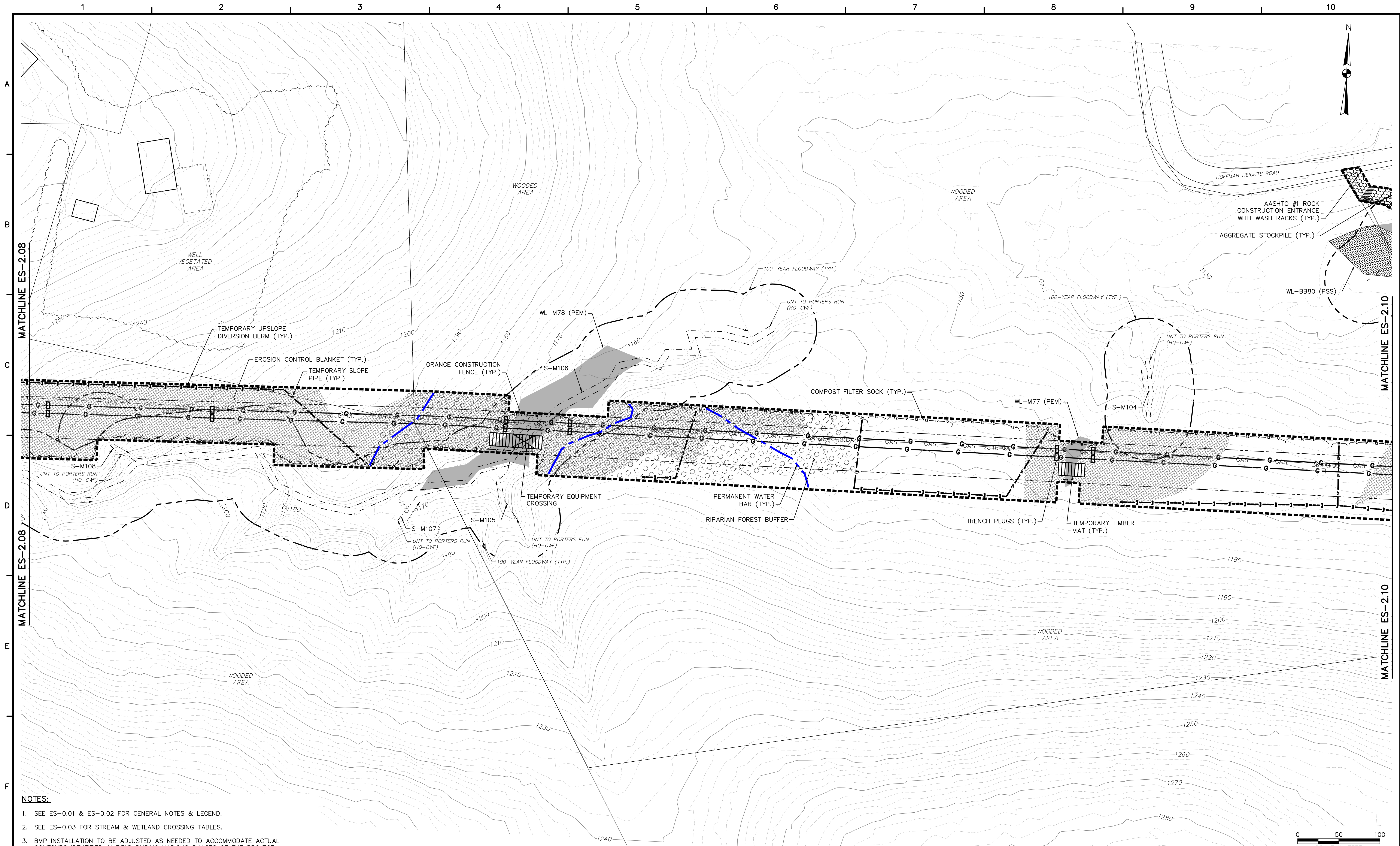


SUNOCO PIPELINE L.P.
SINKING SPRING, PENNSYLVANIA
PENNSYLVANIA PIPELINE PROJECT
CONSTRUCTION SPREAD 2

1-16" & 1-20" PROPOSED WELDED STEEL NATURAL GAS LIQUIDS PIPELINES
WESTMORELAND COUNTY CONSERVATION DISTRICT
EROSION & SEDIMENT CONTROL &
SITE RESTORATION PLAN
SHEET 5 OF 47

DATE:	NOVEMBER 2016
PROJECT NO.:	112C05958
DESIGNED BY:	JB
DRAWN BY:	BH
CHECKED BY:	RS
COPYRIGHT TETRA TECH INC.	
ES-2.05	
SHEET 2.05 OF 74	

TETRA TECH
 www.tetrattech.com
 661 ANDERSEN DRIVE - FOSTER PLAZA 7
 PITTSBURGH, PA 15220
 T: (412) 921-7090 | F: (412) 921-4040

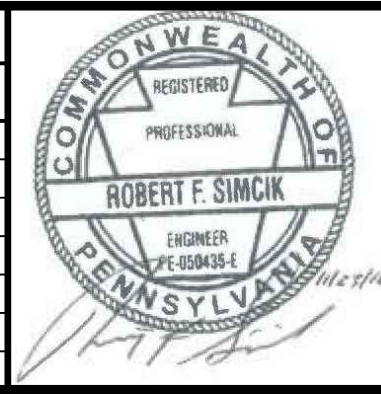


- NOTES:**
1. SEE ES-0.01 & ES-0.02 FOR GENERAL NOTES & LEGEND.
 2. SEE ES-0.03 FOR STREAM & WETLAND CROSSING TABLES.
 3. BMP INSTALLATION TO BE ADJUSTED AS NEEDED TO ACCOMMODATE ACTUAL CONTOURS IDENTIFIED IN FIELD DURING VARIOUS PHASES OF THE PROJECT.



TETRA TECH
www.tetrattech.com
661 ANDERSEN DRIVE - FOSTER PLAZA 7
PITTSBURGH, PA 15220
T: (412) 921-7090 | F: (412) 921-4040

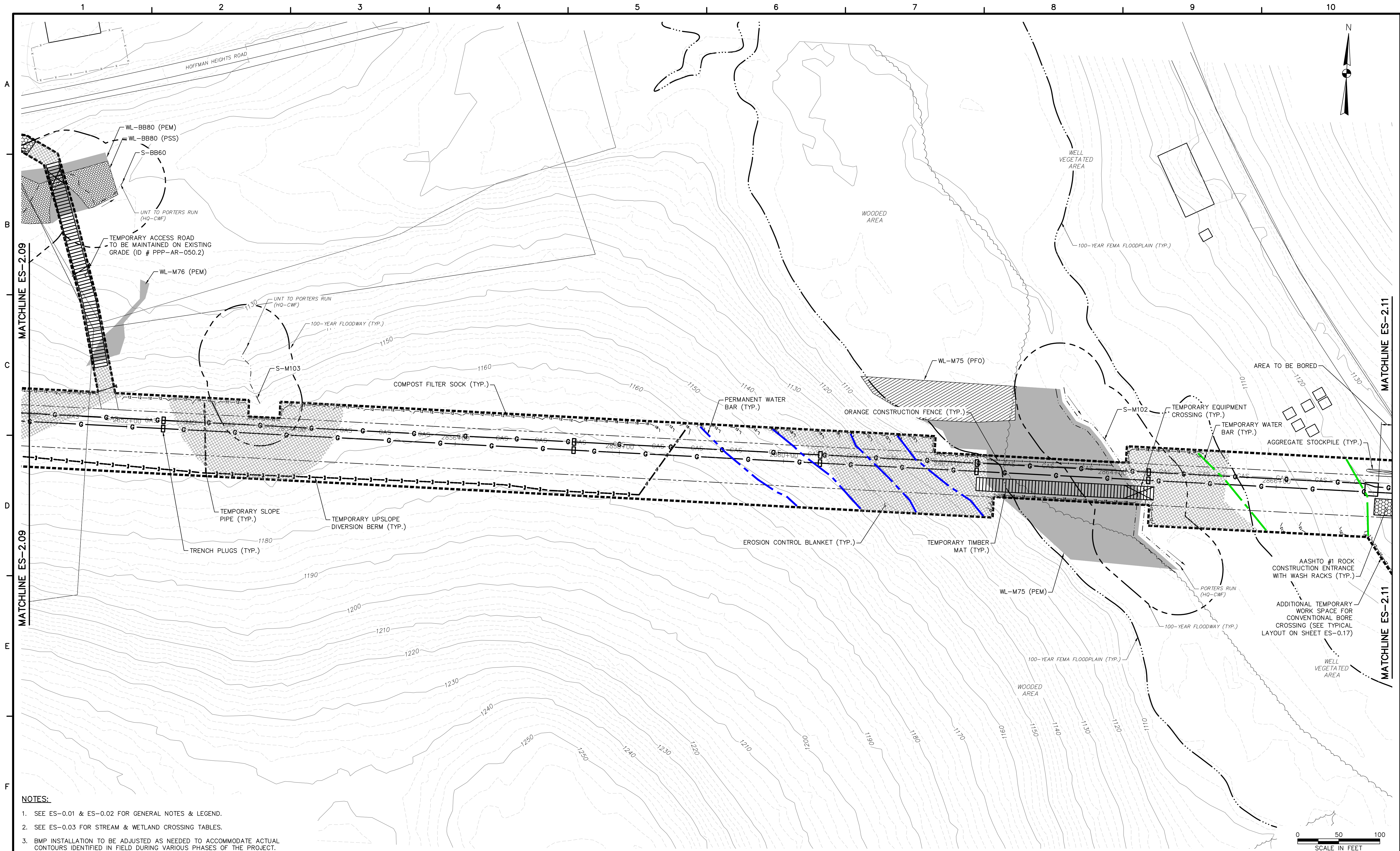
REVISIONS			
NO.	BY	DATE	REMARKS



SUNOCO PIPELINE L.P.
SINKING SPRING, PENNSYLVANIA
**PENNSYLVANIA PIPELINE PROJECT
CONSTRUCTION SPREAD 2**

1-16" & 1-20" PROPOSED WELDED STEEL NATURAL GAS LIQUIDS PIPELINES
WESTMORELAND COUNTY CONSERVATION DISTRICT
**EROSION & SEDIMENT CONTROL &
SITE RESTORATION PLAN**
SHEET 9 OF 47

DATE:	NOVEMBER 2016
PROJECT NO.:	112C05958
DESIGNED BY:	JB
DRAWN BY:	BH
CHECKED BY:	RS
COPYRIGHT TETRA TECH INC.	
ES-2.09	
SHEET 2.09 OF 74	

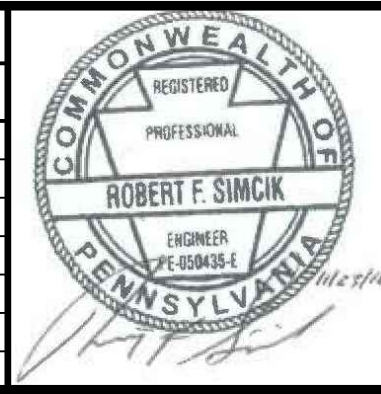


- NOTES:**
- SEE ES-0.01 & ES-0.02 FOR GENERAL NOTES & LEGEND.
 - SEE ES-0.03 FOR STREAM & WETLAND CROSSING TABLES.
 - BMP INSTALLATION TO BE ADJUSTED AS NEEDED TO ACCOMMODATE ACTUAL CONTOURS IDENTIFIED IN FIELD DURING VARIOUS PHASES OF THE PROJECT.



TETRA TECH
www.tetrattech.com
661 ANDERSEN DRIVE - FOSTER PLAZA 7
PITTSBURGH, PA 15220
T: (412) 921-7090 | F: (412) 921-4040

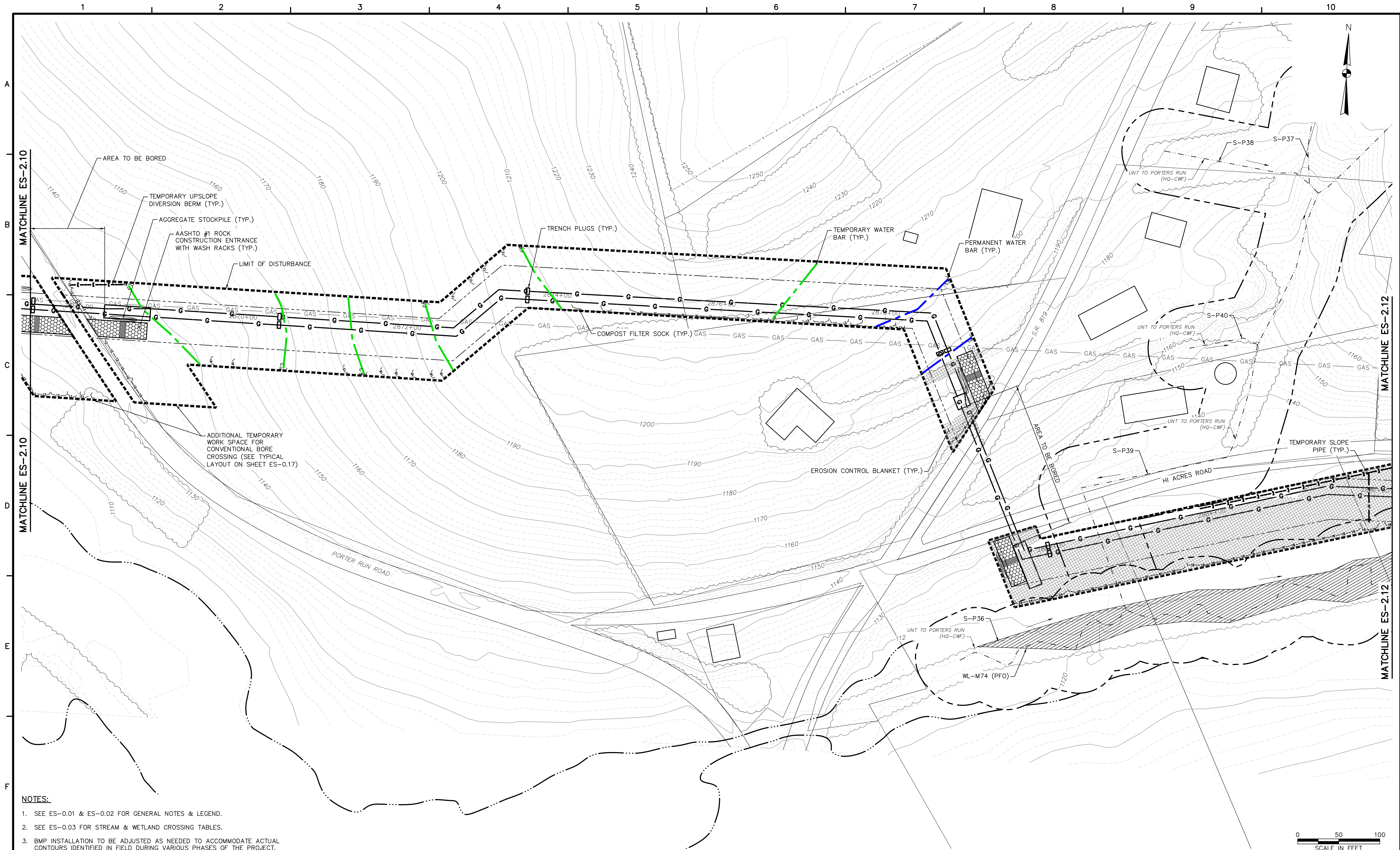
REVISIONS			
NO.	BY	DATE	REMARKS



SUNOCO PIPELINE L.P.
SINKING SPRING, PENNSYLVANIA
**PENNSYLVANIA PIPELINE PROJECT
CONSTRUCTION SPREAD 2**

1-16" & 1-20" PROPOSED WELDED STEEL NATURAL GAS LIQUIDS PIPELINES
WESTMORELAND COUNTY CONSERVATION DISTRICT
**EROSION & SEDIMENT CONTROL &
SITE RESTORATION PLAN
SHEET 10 OF 47**

DATE:	NOVEMBER 2016
PROJECT NO.:	112C05958
DESIGNED BY:	JB
DRAWN BY:	BH
CHECKED BY:	RS
COPYRIGHT TETRA TECH INC.	
ES-2.10	
SHEET 2.10 OF 74	

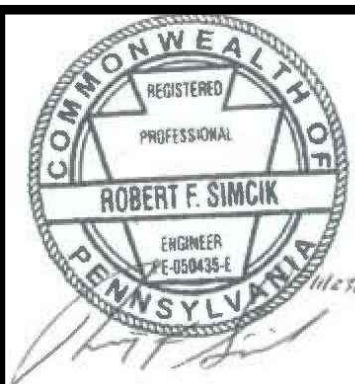


- NOTES:**
1. SEE ES-0.01 & ES-0.02 FOR GENERAL NOTES & LEGEND.
 2. SEE ES-0.03 FOR STREAM & WETLAND CROSSING TABLES.
 3. BMP INSTALLATION TO BE ADJUSTED AS NEEDED TO ACCOMMODATE ACTUAL CONTOURS IDENTIFIED IN FIELD DURING VARIOUS PHASES OF THE PROJECT.



www.tetrattech.com
 661 ANDERSEN DRIVE - FOSTER PLAZA 7
 PITTSBURGH, PA 15220
 T: (412) 921-7090 | F: (412) 921-4040

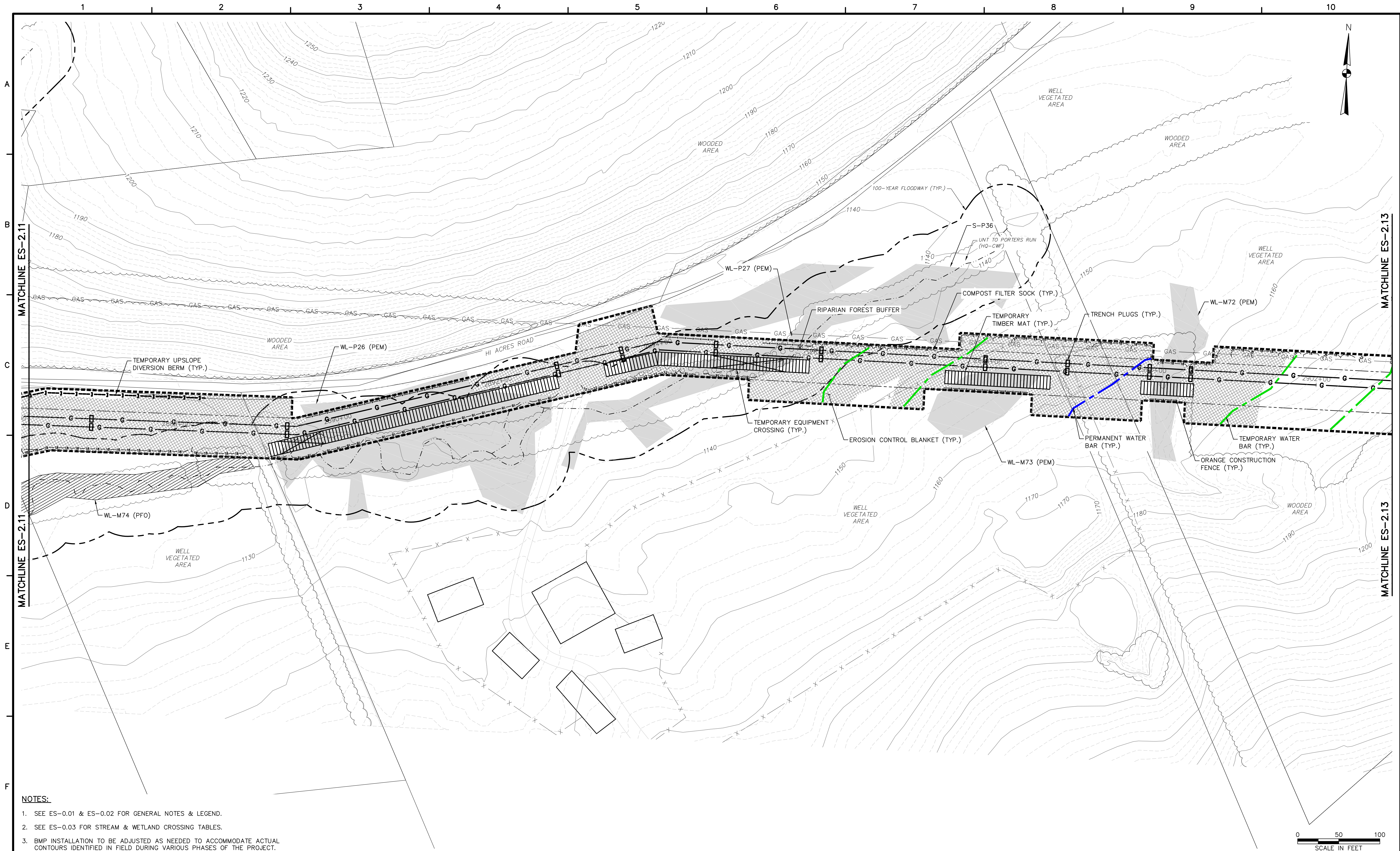
REVISIONS			
NO.	BY	DATE	REMARKS



SUNOCO PIPELINE L.P.
 SINKING SPRING, PENNSYLVANIA
 PENNSYLVANIA PIPELINE PROJECT
 CONSTRUCTION SPREAD 2

1-16" & 1-20" PROPOSED WELDED STEEL NATURAL GAS LIQUIDS PIPELINES
 WESTMORELAND COUNTY CONSERVATION DISTRICT
 EROSION & SEDIMENT CONTROL &
 SITE RESTORATION PLAN
 SHEET 11 OF 47

DATE:	NOVEMBER 2016
PROJECT NO.:	112C05958
DESIGNED BY:	JB
DRAWN BY:	BH
CHECKED BY:	RS
COPYRIGHT TETRA TECH INC.	
ES-2.11	
SHEET 2.11 OF 74	



- NOTES:**
- SEE ES-0.01 & ES-0.02 FOR GENERAL NOTES & LEGEND.
 - SEE ES-0.03 FOR STREAM & WETLAND CROSSING TABLES.
 - BMP INSTALLATION TO BE ADJUSTED AS NEEDED TO ACCOMMODATE ACTUAL CONTOURS IDENTIFIED IN FIELD DURING VARIOUS PHASES OF THE PROJECT.



661 ANDERSEN DRIVE - FOSTER PLAZA 7
PITTSBURGH, PA 15220
T: (412) 921-7090 | F: (412) 921-4040

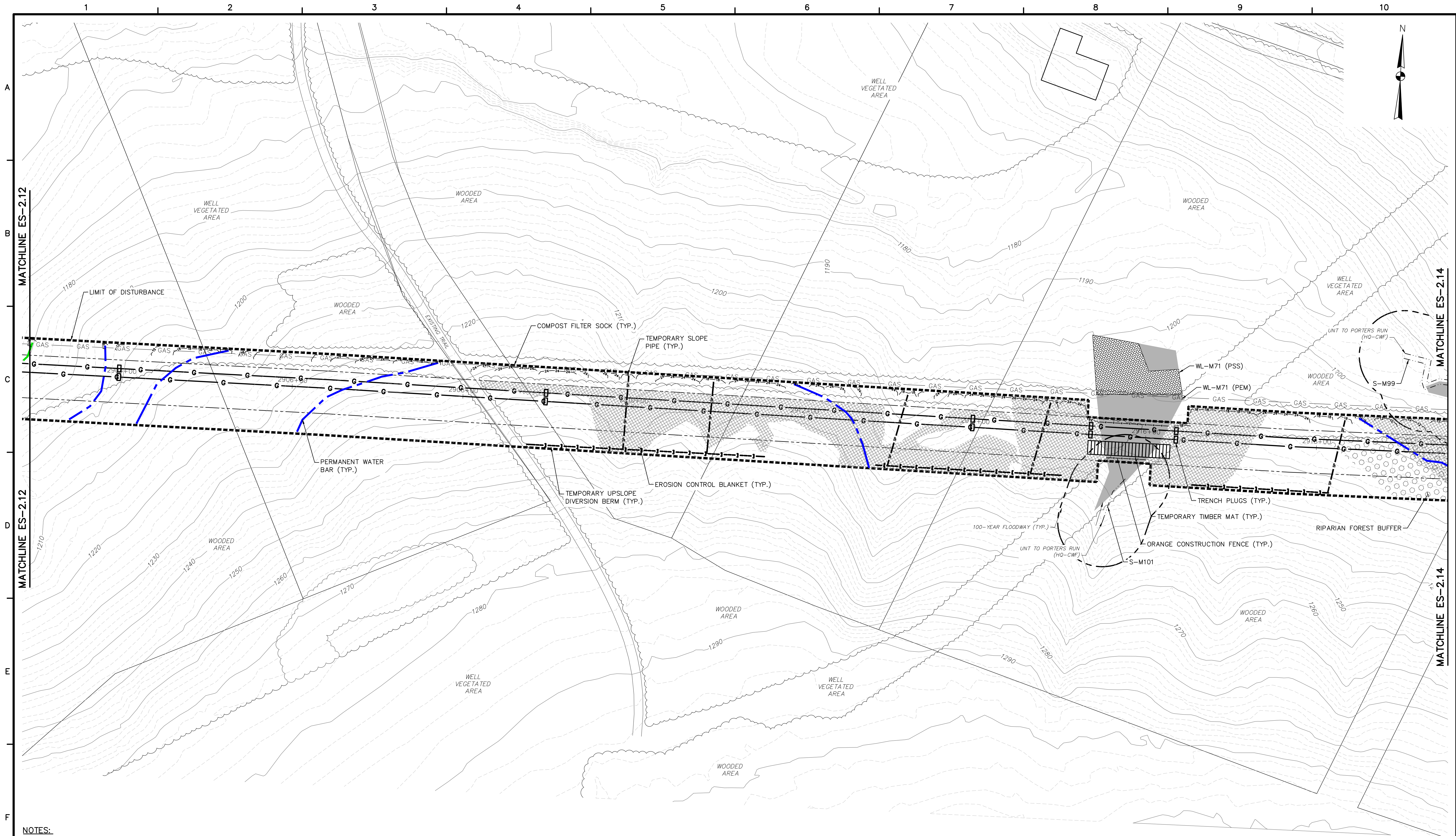
REVISIONS			
NO.	BY	DATE	REMARKS



SUNOCO PIPELINE L.P.
SINKING SPRING, PENNSYLVANIA
PENNSYLVANIA PIPELINE PROJECT
CONSTRUCTION SPREAD 2

1-16" & 1-20" PROPOSED WELDED STEEL NATURAL GAS LIQUIDS PIPELINES
WESTMORELAND COUNTY CONSERVATION DISTRICT
EROSION & SEDIMENT CONTROL &
SITE RESTORATION PLAN
SHEET 12 OF 47

DATE:	NOVEMBER 2016
PROJECT NO.:	112C05958
DESIGNED BY:	JB
DRAWN BY:	BH
CHECKED BY:	RS
COPYRIGHT TETRA TECH INC.	
ES-2.12	
SHEET 12 OF 47	

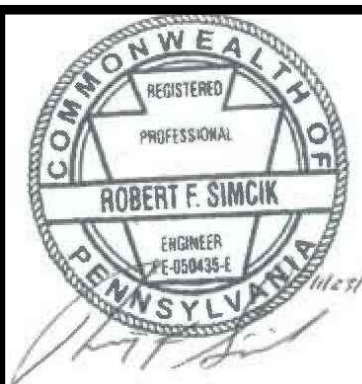


- NOTES:**
1. SEE ES-0.01 & ES-0.02 FOR GENERAL NOTES & LEGEND.
 2. SEE ES-0.03 FOR STREAM & WETLAND CROSSING TABLES.
 3. BMP INSTALLATION TO BE ADJUSTED AS NEEDED TO ACCOMMODATE ACTUAL CONTOURS IDENTIFIED IN FIELD DURING VARIOUS PHASES OF THE PROJECT.



www.tetrattech.com
 661 ANDERSEN DRIVE - FOSTER PLAZA 7
 PITTSBURGH, PA 15220
 T: (412) 921-7090 | F: (412) 921-4040

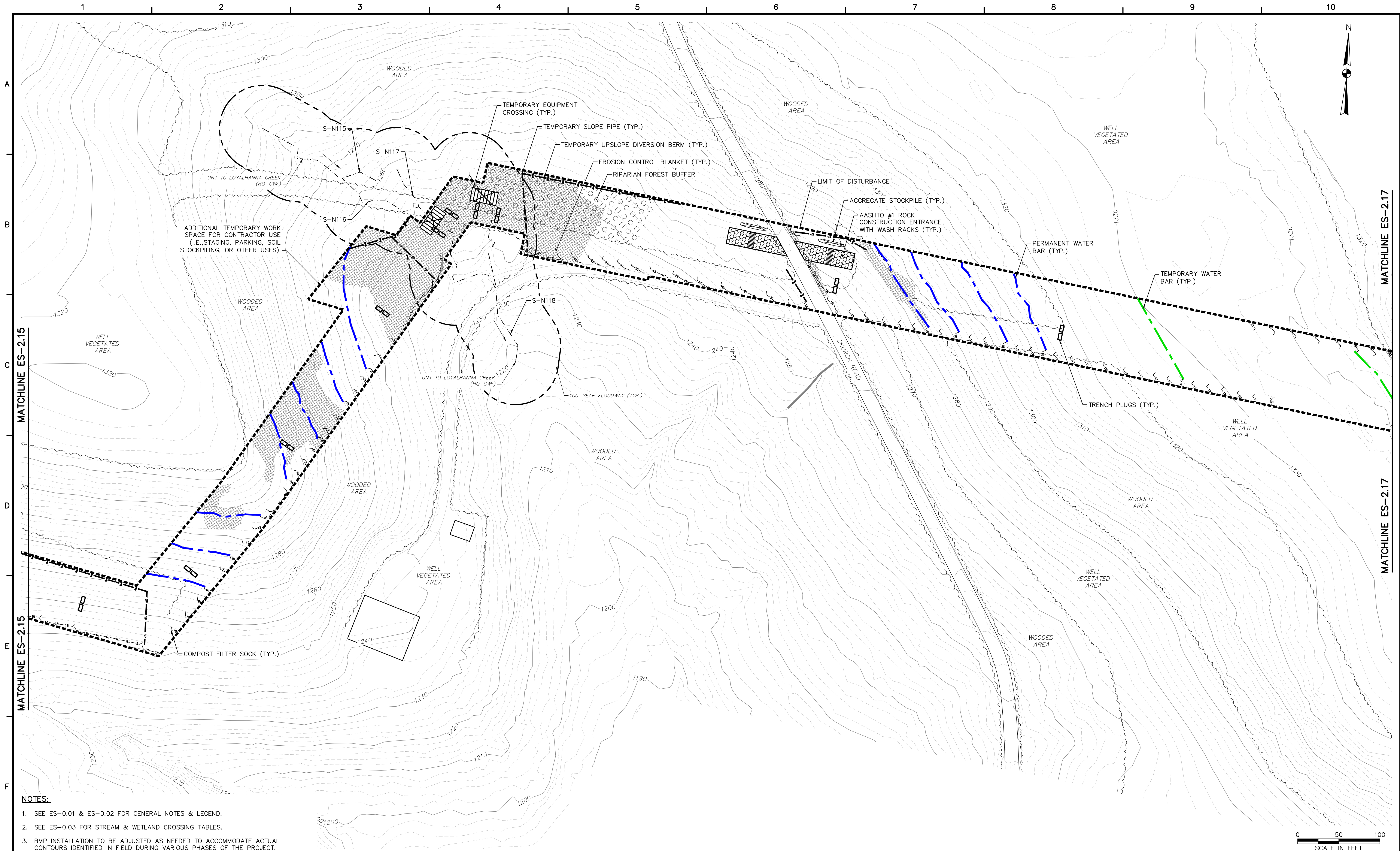
REVISIONS			
NO.	BY	DATE	REMARKS



SUNOCO PIPELINE L.P.
 SINKING SPRING, PENNSYLVANIA
 PENNSYLVANIA PIPELINE PROJECT
 CONSTRUCTION SPREAD 2

1-16" & 1-20" PROPOSED WELDED STEEL NATURAL GAS LIQUIDS PIPELINES
 WESTMORELAND COUNTY CONSERVATION DISTRICT
 EROSION & SEDIMENT CONTROL &
 SITE RESTORATION PLAN
 SHEET 13 OF 47

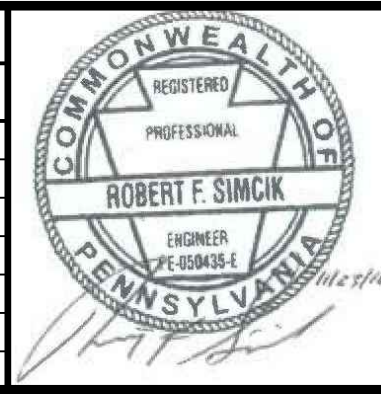
DATE:	NOVEMBER 2016
PROJECT NO.:	112C05958
DESIGNED BY:	JB
DRAWN BY:	BH
CHECKED BY:	RS
COPYRIGHT TETRA TECH INC.	
ES-2.13	
SHEET 2.13 OF 74	



- NOTES:**
1. SEE ES-0.01 & ES-0.02 FOR GENERAL NOTES & LEGEND.
 2. SEE ES-0.03 FOR STREAM & WETLAND CROSSING TABLES.
 3. BMP INSTALLATION TO BE ADJUSTED AS NEEDED TO ACCOMMODATE ACTUAL CONTOURS IDENTIFIED IN FIELD DURING VARIOUS PHASES OF THE PROJECT.

TETRA TECH
www.tetrattech.com
661 ANDERSEN DRIVE - FOSTER PLAZA 7
PITTSBURGH, PA 15220
T: (412) 921-7090 | F: (412) 921-4040

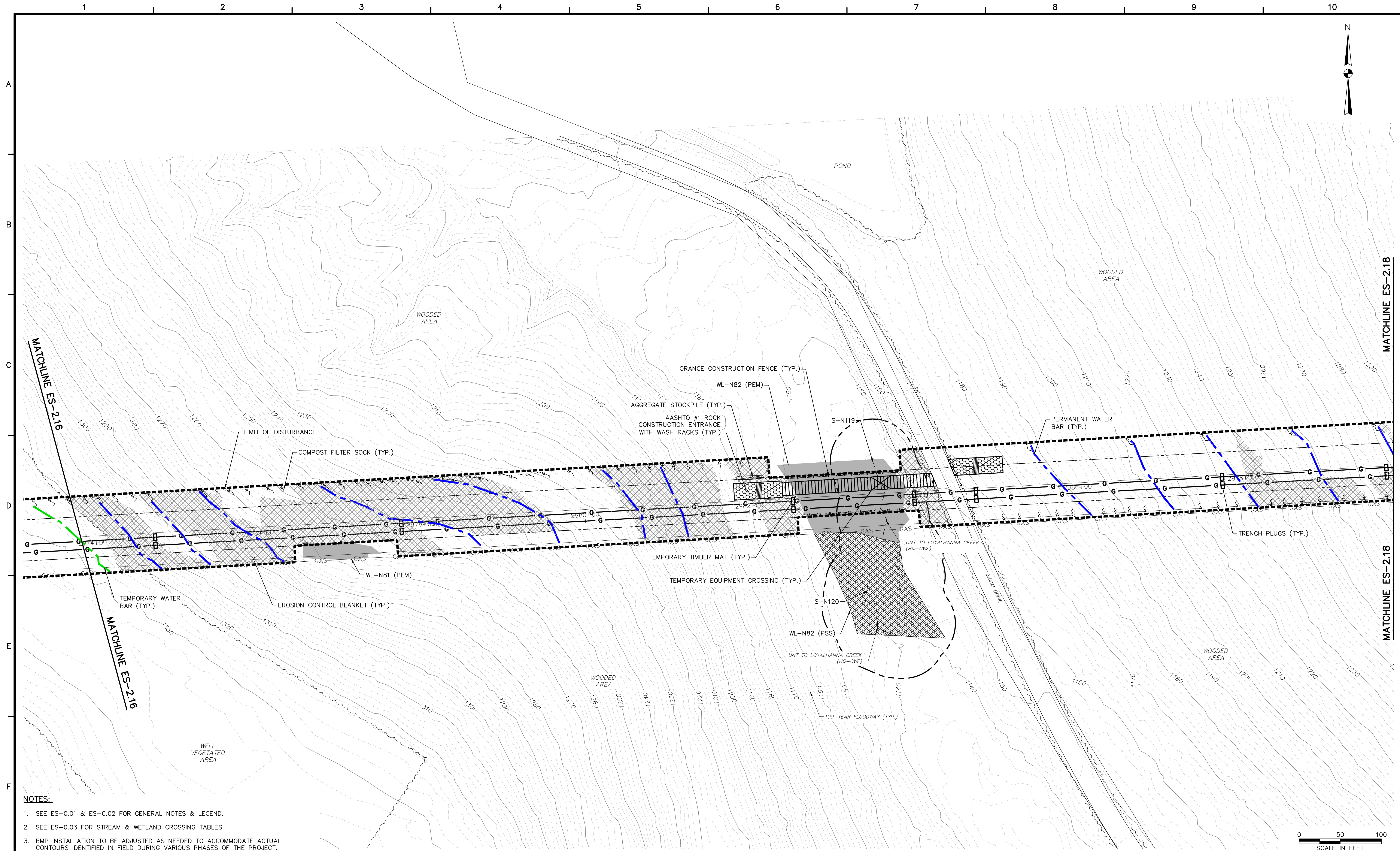
REVISIONS			
NO.	BY	DATE	REMARKS



SUNOCO PIPELINE L.P.
SINKING SPRING, PENNSYLVANIA
PENNSYLVANIA PIPELINE PROJECT
CONSTRUCTION SPREAD 2

1-16" & 1-20" PROPOSED WELDED STEEL NATURAL GAS LIQUIDS PIPELINES
WESTMORELAND COUNTY CONSERVATION DISTRICT
EROSION & SEDIMENT CONTROL &
SITE RESTORATION PLAN
SHEET 16 OF 47

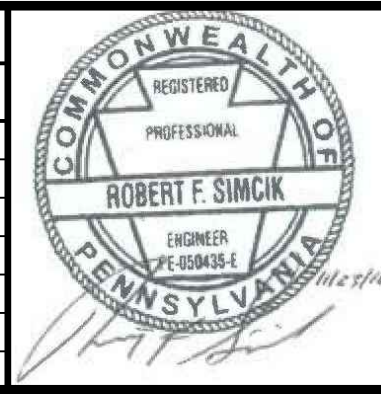
DATE:	NOVEMBER 2016
PROJECT NO.:	112C05958
DESIGNED BY:	JB
DRAWN BY:	BH
CHECKED BY:	RS
COPYRIGHT TETRA TECH INC.	
ES-2.16	
SHEET 2.16 OF 74	



- NOTES:**
- SEE ES-0.01 & ES-0.02 FOR GENERAL NOTES & LEGEND.
 - SEE ES-0.03 FOR STREAM & WETLAND CROSSING TABLES.
 - BMP INSTALLATION TO BE ADJUSTED AS NEEDED TO ACCOMMODATE ACTUAL CONTOURS IDENTIFIED IN FIELD DURING VARIOUS PHASES OF THE PROJECT.

TETRA TECH
www.tetrattech.com
661 ANDERSEN DRIVE - FOSTER PLAZA 7
PITTSBURGH, PA 15220
T: (412) 921-7090 | F: (412) 921-4040

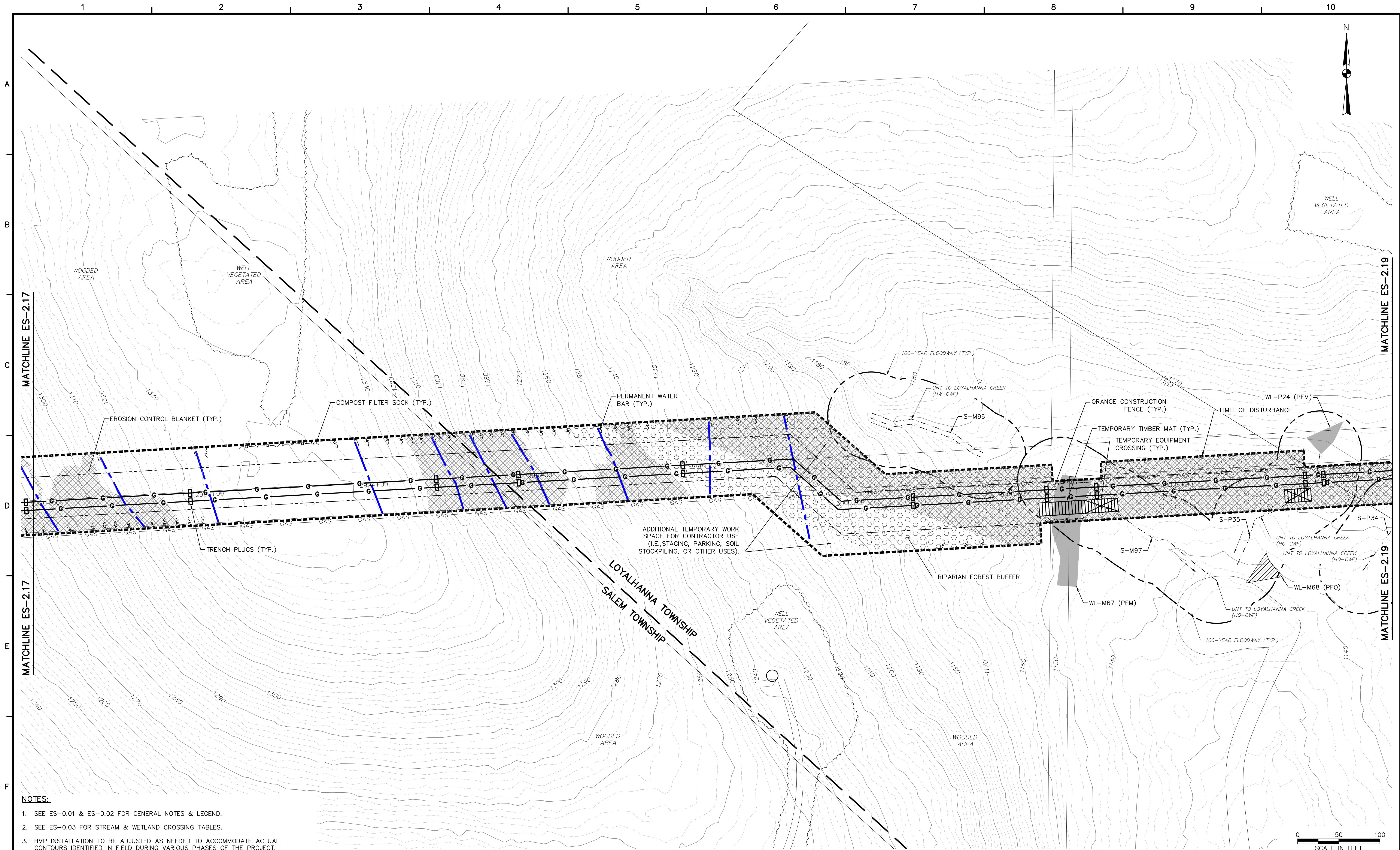
REVISIONS			
NO.	BY	DATE	REMARKS



**SUNOCO PIPELINE L.P.
SINKING SPRING, PENNSYLVANIA
PENNSYLVANIA PIPELINE PROJECT
CONSTRUCTION SPREAD 2**

1-16" & 1-20" PROPOSED WELDED STEEL NATURAL GAS LIQUIDS PIPELINES
WESTMORELAND COUNTY CONSERVATION DISTRICT
EROSION & SEDIMENT CONTROL &
SITE RESTORATION PLAN
SHEET 17 OF 47

DATE:	NOVEMBER 2016
PROJECT NO.:	112C05958
DESIGNED BY:	JB
DRAWN BY:	BH
CHECKED BY:	RS
COPYRIGHT TETRA TECH INC.	
ES-2.17	
SHEET 2.17 OF 74	



- NOTES:**
1. SEE ES-0.01 & ES-0.02 FOR GENERAL NOTES & LEGEND.
 2. SEE ES-0.03 FOR STREAM & WETLAND CROSSING TABLES.
 3. BMP INSTALLATION TO BE ADJUSTED AS NEEDED TO ACCOMMODATE ACTUAL CONTOURS IDENTIFIED IN FIELD DURING VARIOUS PHASES OF THE PROJECT.



www.tetrattech.com
 661 ANDERSEN DRIVE - FOSTER PLAZA 7
 PITTSBURGH, PA 15220
 T: (412) 921-7090 | F: (412) 921-4040

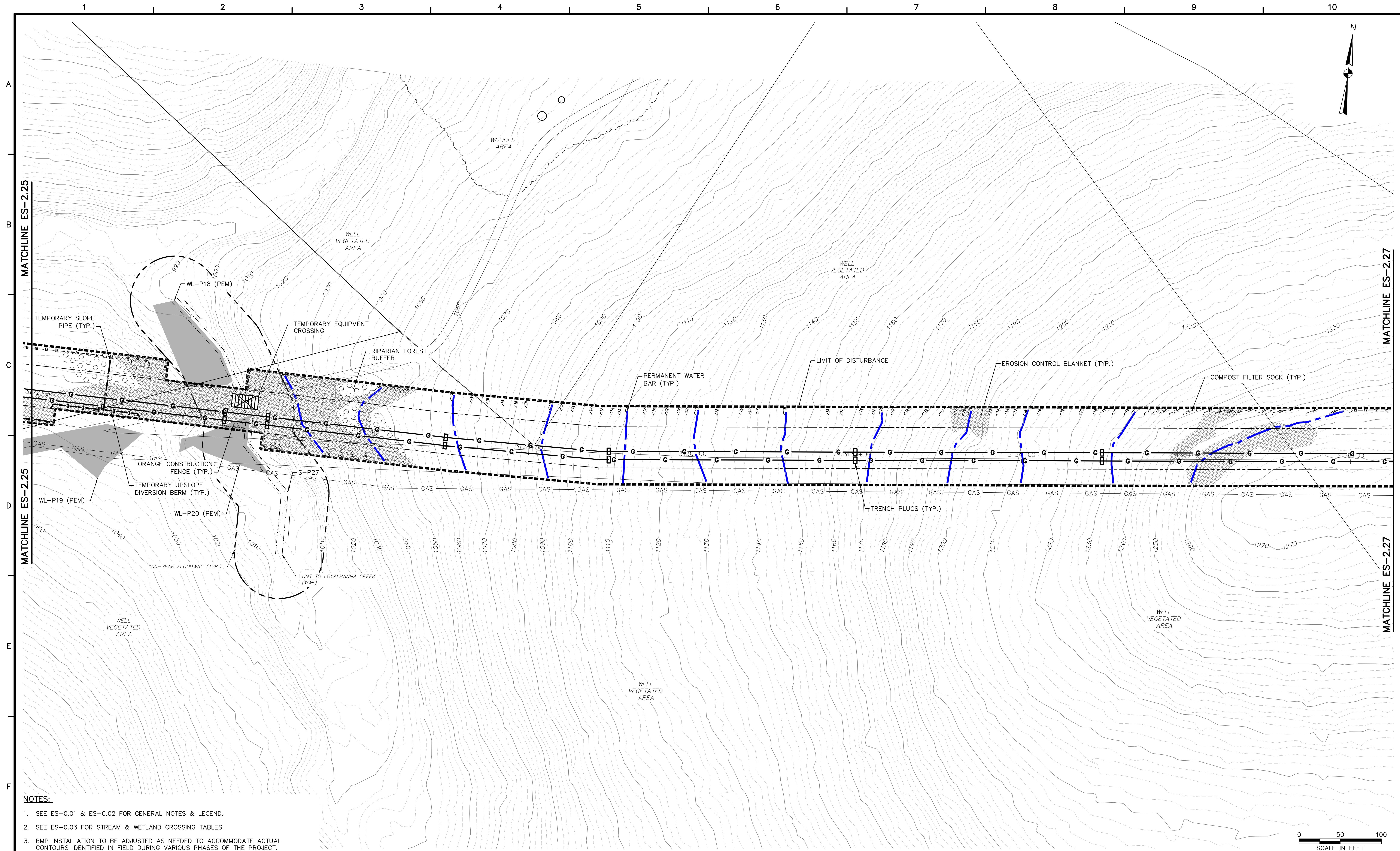
REVISIONS			
NO.	BY	DATE	REMARKS



SUNOCO PIPELINE L.P.
 SINKING SPRING, PENNSYLVANIA
 PENNSYLVANIA PIPELINE PROJECT
 CONSTRUCTION SPREAD 2

1-16" & 1-20" PROPOSED WELDED STEEL NATURAL GAS LIQUIDS PIPELINES
 WESTMORELAND COUNTY CONSERVATION DISTRICT
 EROSION & SEDIMENT CONTROL &
 SITE RESTORATION PLAN
 SHEET 18 OF 47

DATE:	NOVEMBER 2016
PROJECT NO.:	112C05958
DESIGNED BY:	JB
DRAWN BY:	BH
CHECKED BY:	RS
COPYRIGHT TETRA TECH INC.	
ES-2.18	
SHEET 2.18 OF 74	

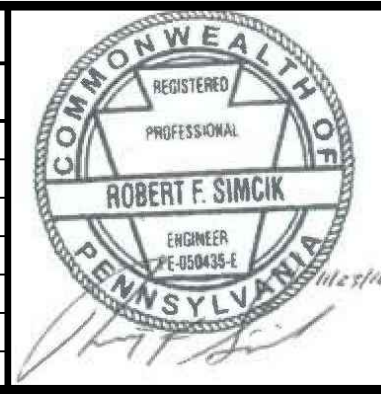


- NOTES:**
- SEE ES-0.01 & ES-0.02 FOR GENERAL NOTES & LEGEND.
 - SEE ES-0.03 FOR STREAM & WETLAND CROSSING TABLES.
 - BMP INSTALLATION TO BE ADJUSTED AS NEEDED TO ACCOMMODATE ACTUAL CONTOURS IDENTIFIED IN FIELD DURING VARIOUS PHASES OF THE PROJECT.



TETRA TECH
www.tetrattech.com
661 ANDERSEN DRIVE - FOSTER PLAZA 7
PITTSBURGH, PA 15220
T: (412) 921-7090 | F: (412) 921-4040

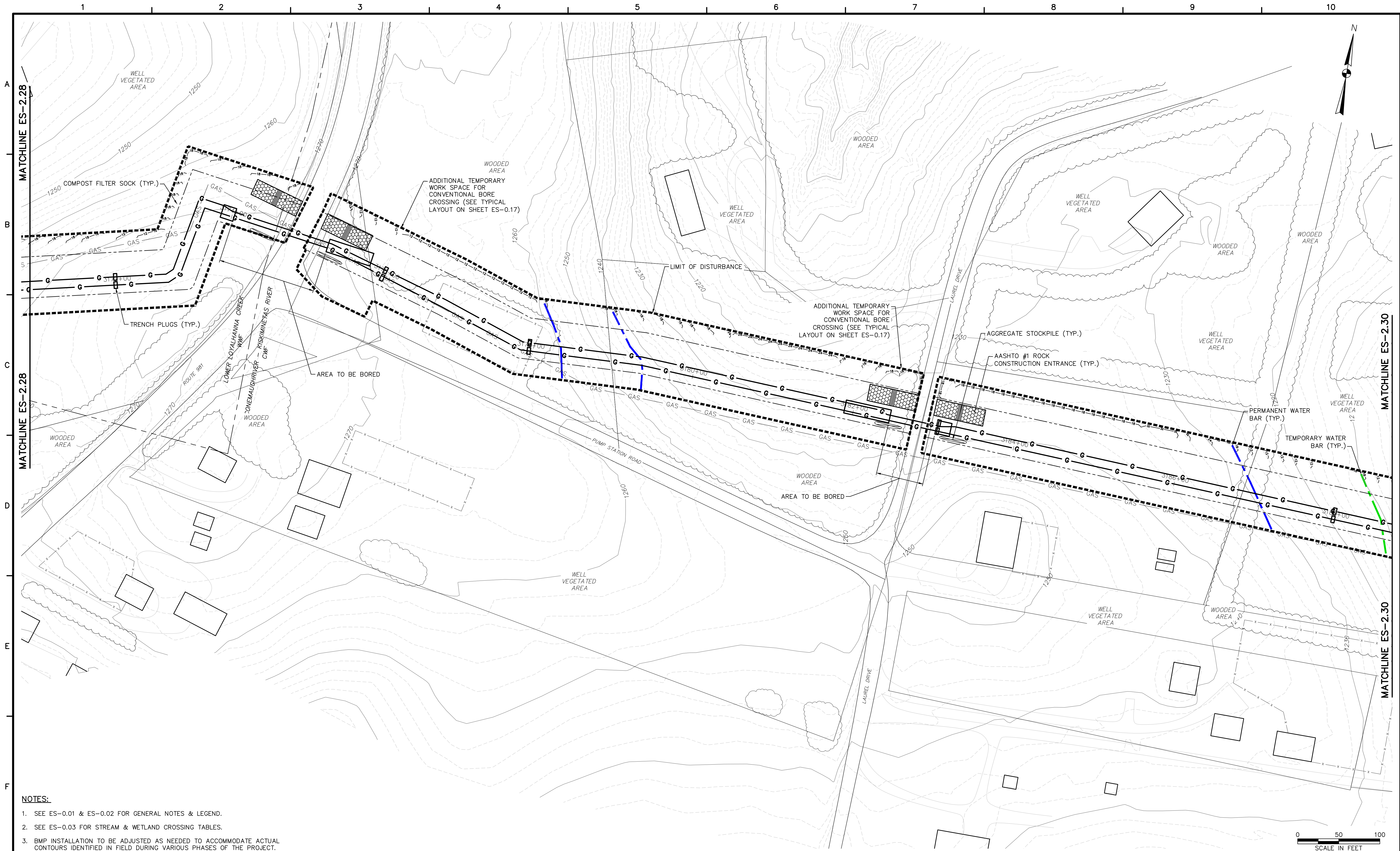
REVISIONS			
NO.	BY	DATE	REMARKS



SUNOCO PIPELINE L.P.
SINKING SPRING, PENNSYLVANIA
**PENNSYLVANIA PIPELINE PROJECT
CONSTRUCTION SPREAD 2**

1-16" & 1-20" PROPOSED WELDED STEEL NATURAL GAS LIQUIDS PIPELINES
WESTMORELAND COUNTY CONSERVATION DISTRICT
**EROSION & SEDIMENT CONTROL &
SITE RESTORATION PLAN
SHEET 26 OF 47**

DATE:	NOVEMBER 2016
PROJECT NO.:	112C05958
DESIGNED BY:	JB
DRAWN BY:	BH
CHECKED BY:	RS
COPYRIGHT TETRA TECH INC.	
ES-2.26	
SHEET 2.26 OF 74	

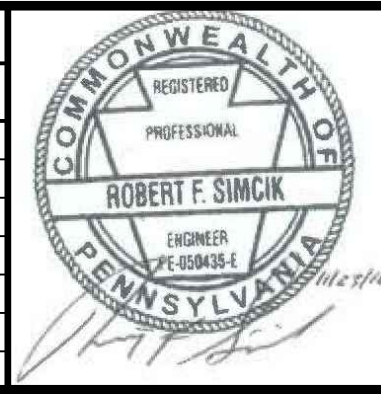


- NOTES:**
- SEE ES-0.01 & ES-0.02 FOR GENERAL NOTES & LEGEND.
 - SEE ES-0.03 FOR STREAM & WETLAND CROSSING TABLES.
 - BMP INSTALLATION TO BE ADJUSTED AS NEEDED TO ACCOMMODATE ACTUAL CONTOURS IDENTIFIED IN FIELD DURING VARIOUS PHASES OF THE PROJECT.



TETRA TECH
www.tetrattech.com
661 ANDERSEN DRIVE - FOSTER PLAZA 7
PITTSBURGH, PA 15220
T: (412) 921-7090 | F: (412) 921-4040

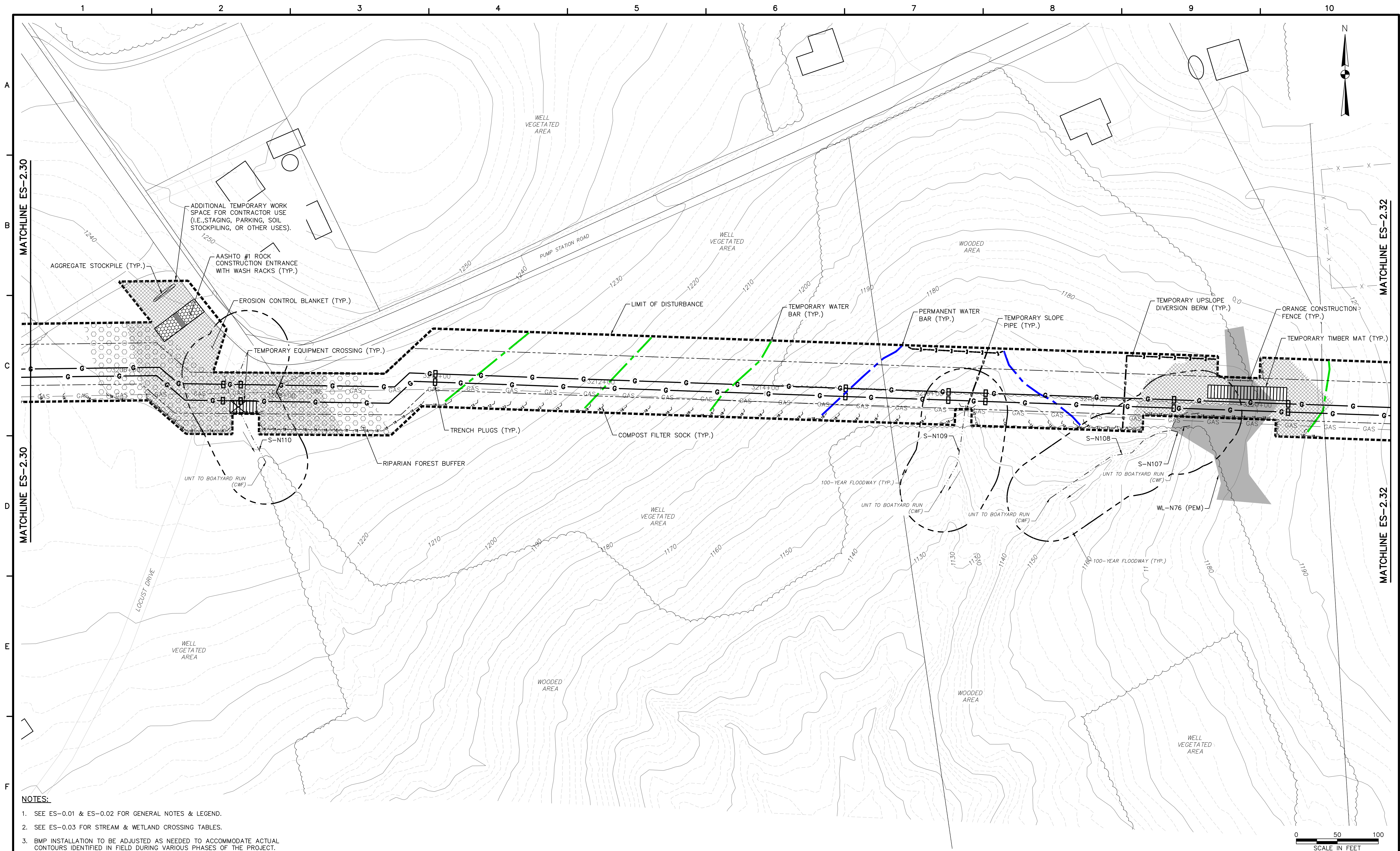
REVISIONS			
NO.	BY	DATE	REMARKS



SUNOCO PIPELINE L.P.
SINKING SPRING, PENNSYLVANIA
PENNSYLVANIA PIPELINE PROJECT
CONSTRUCTION SPREAD 2

1-16" & 1-20" PROPOSED WELDED STEEL NATURAL GAS LIQUIDS PIPELINES
WESTMORELAND COUNTY CONSERVATION DISTRICT
EROSION & SEDIMENT CONTROL &
SITE RESTORATION PLAN
SHEET 29 OF 47

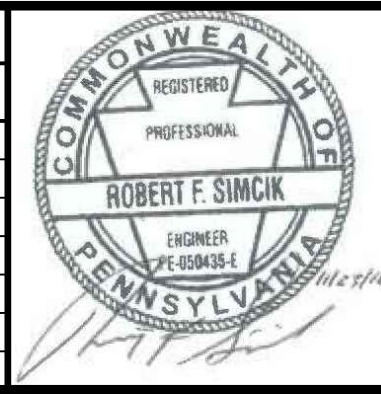
DATE:	NOVEMBER 2016
PROJECT NO.:	112C05958
DESIGNED BY:	JB
DRAWN BY:	BH
CHECKED BY:	RS
COPYRIGHT TETRA TECH INC.	
ES-2.29	
SHEET 2.29 OF 74	



- NOTES:**
1. SEE ES-0.01 & ES-0.02 FOR GENERAL NOTES & LEGEND.
 2. SEE ES-0.03 FOR STREAM & WETLAND CROSSING TABLES.
 3. BMP INSTALLATION TO BE ADJUSTED AS NEEDED TO ACCOMMODATE ACTUAL CONTOURS IDENTIFIED IN FIELD DURING VARIOUS PHASES OF THE PROJECT.

TETRA TECH
 www.tetrattech.com
 661 ANDERSEN DRIVE - FOSTER PLAZA 7
 PITTSBURGH, PA 15220
 T: (412) 921-7090 | F: (412) 921-4040

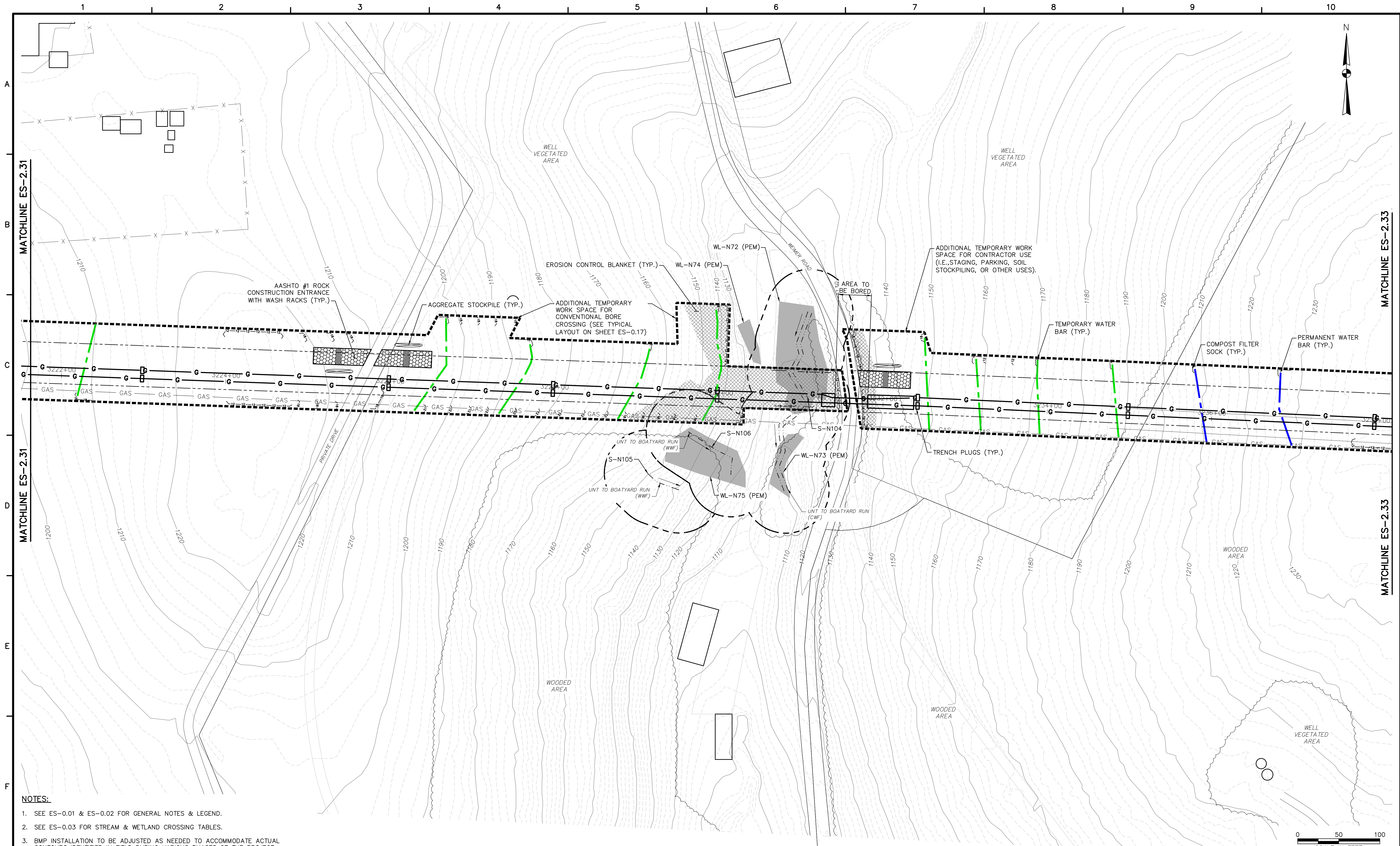
REVISIONS			
NO.	BY	DATE	REMARKS



SUNOCO PIPELINE L.P.
 SINKING SPRING, PENNSYLVANIA
PENNSYLVANIA PIPELINE PROJECT
 CONSTRUCTION SPREAD 2

1-16" & 1-20" PROPOSED WELDED STEEL NATURAL GAS LIQUIDS PIPELINES
 WESTMORELAND COUNTY CONSERVATION DISTRICT
 EROSION & SEDIMENT CONTROL &
 SITE RESTORATION PLAN
 SHEET 31 OF 47

DATE:	NOVEMBER 2016
PROJECT NO.:	112C05958
DESIGNED BY:	JB
DRAWN BY:	BH
CHECKED BY:	RS
COPYRIGHT TETRA TECH INC.	
ES-2.31	
SHEET 2.31 OF 74	

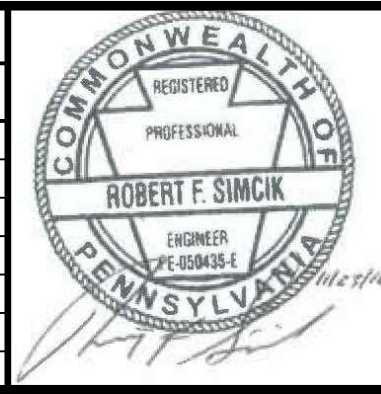


- NOTES:**
1. SEE ES-0.01 & ES-0.02 FOR GENERAL NOTES & LEGEND.
 2. SEE ES-0.03 FOR STREAM & WETLAND CROSSING TABLES.
 3. BMP INSTALLATION TO BE ADJUSTED AS NEEDED TO ACCOMMODATE ACTUAL CONTOURS IDENTIFIED IN FIELD DURING VARIOUS PHASES OF THE PROJECT.



TETRA TECH
www.tetrattech.com
661 ANDERSEN DRIVE - FOSTER PLAZA 7
PITTSBURGH, PA 15220
T: (412) 921-7090 | F: (412) 921-4040

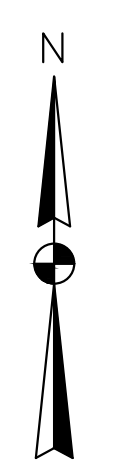
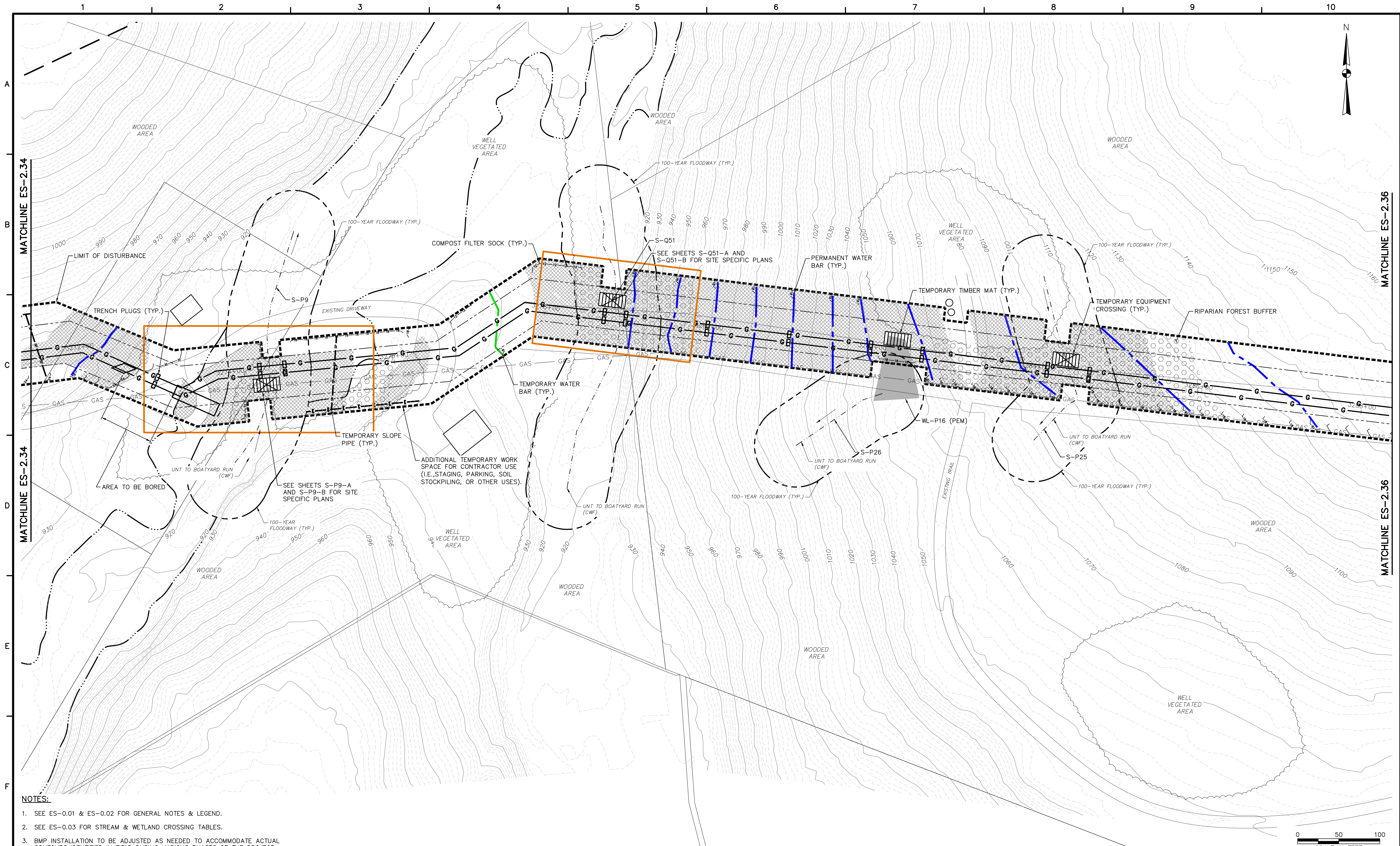
REVISIONS			
NO.	BY	DATE	REMARKS



SUNOCO PIPELINE L.P.
SINKING SPRING, PENNSYLVANIA
**PENNSYLVANIA PIPELINE PROJECT
CONSTRUCTION SPREAD 2**

1-16" & 1-20" PROPOSED WELDED STEEL NATURAL GAS LIQUIDS PIPELINES
WESTMORELAND COUNTY CONSERVATION DISTRICT
**EROSION & SEDIMENT CONTROL &
SITE RESTORATION PLAN**
SHEET 32 OF 47

DATE:	NOVEMBER 2016
PROJECT NO.:	112C05958
DESIGNED BY:	JB
DRAWN BY:	BH
CHECKED BY:	RS
COPYRIGHT TETRA TECH INC.	
ES-2.32	
SHEET 2.32 OF 74	

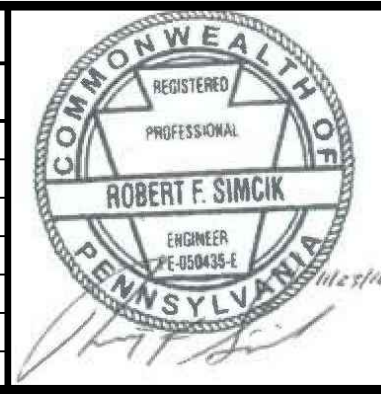


- NOTES:**
1. SEE ES-0.01 & ES-0.02 FOR GENERAL NOTES & LEGEND.
 2. SEE ES-0.03 FOR STREAM & WETLAND CROSSING TABLES.
 3. BMP INSTALLATION TO BE ADJUSTED AS NEEDED TO ACCOMMODATE ACTUAL CONTOURS IDENTIFIED IN FIELD DURING VARIOUS PHASES OF THE PROJECT.



TETRA TECH
www.tetrattech.com
661 ANDERSEN DRIVE - FOSTER PLAZA 7
PITTSBURGH, PA 15220
T: (412) 921-7090 | F: (412) 921-4040

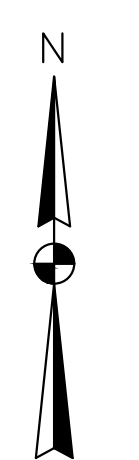
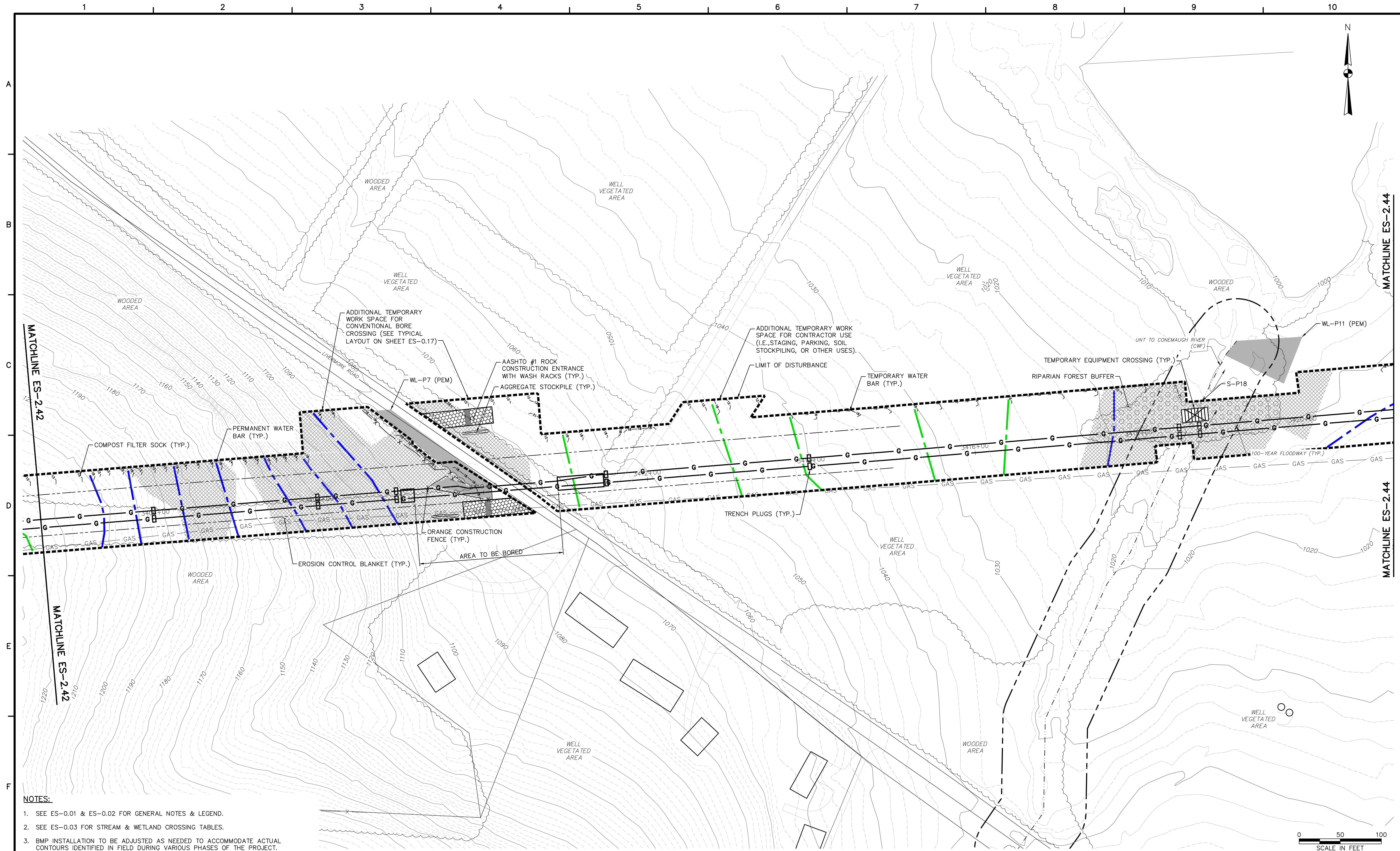
REVISIONS			
NO.	BY	DATE	REMARKS



SUNOCO PIPELINE L.P.
SINKING SPRING, PENNSYLVANIA
**PENNSYLVANIA PIPELINE PROJECT
CONSTRUCTION SPREAD 2**

1-16" & 1-20" PROPOSED WELDED STEEL NATURAL GAS LIQUIDS PIPELINES
WESTMORELAND COUNTY CONSERVATION DISTRICT
**EROSION & SEDIMENT CONTROL &
SITE RESTORATION PLAN
SHEET 35 OF 47**

DATE:	NOVEMBER 2016
PROJECT NO.:	112C05958
DESIGNED BY:	JB
DRAWN BY:	BH
CHECKED BY:	RS
COPYRIGHT TETRA TECH INC.	
ES-2.35	
SHEET 2.35 OF 74	

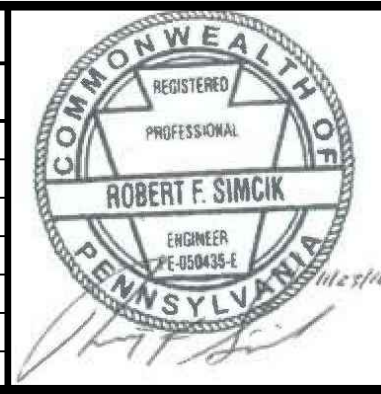


- NOTES:**
1. SEE ES-0.01 & ES-0.02 FOR GENERAL NOTES & LEGEND.
 2. SEE ES-0.03 FOR STREAM & WETLAND CROSSING TABLES.
 3. BMP INSTALLATION TO BE ADJUSTED AS NEEDED TO ACCOMMODATE ACTUAL CONTOURS IDENTIFIED IN FIELD DURING VARIOUS PHASES OF THE PROJECT.



TETRA TECH
www.tetrattech.com
661 ANDERSEN DRIVE - FOSTER PLAZA 7
PITTSBURGH, PA 15220
T: (412) 921-7090 | F: (412) 921-4040

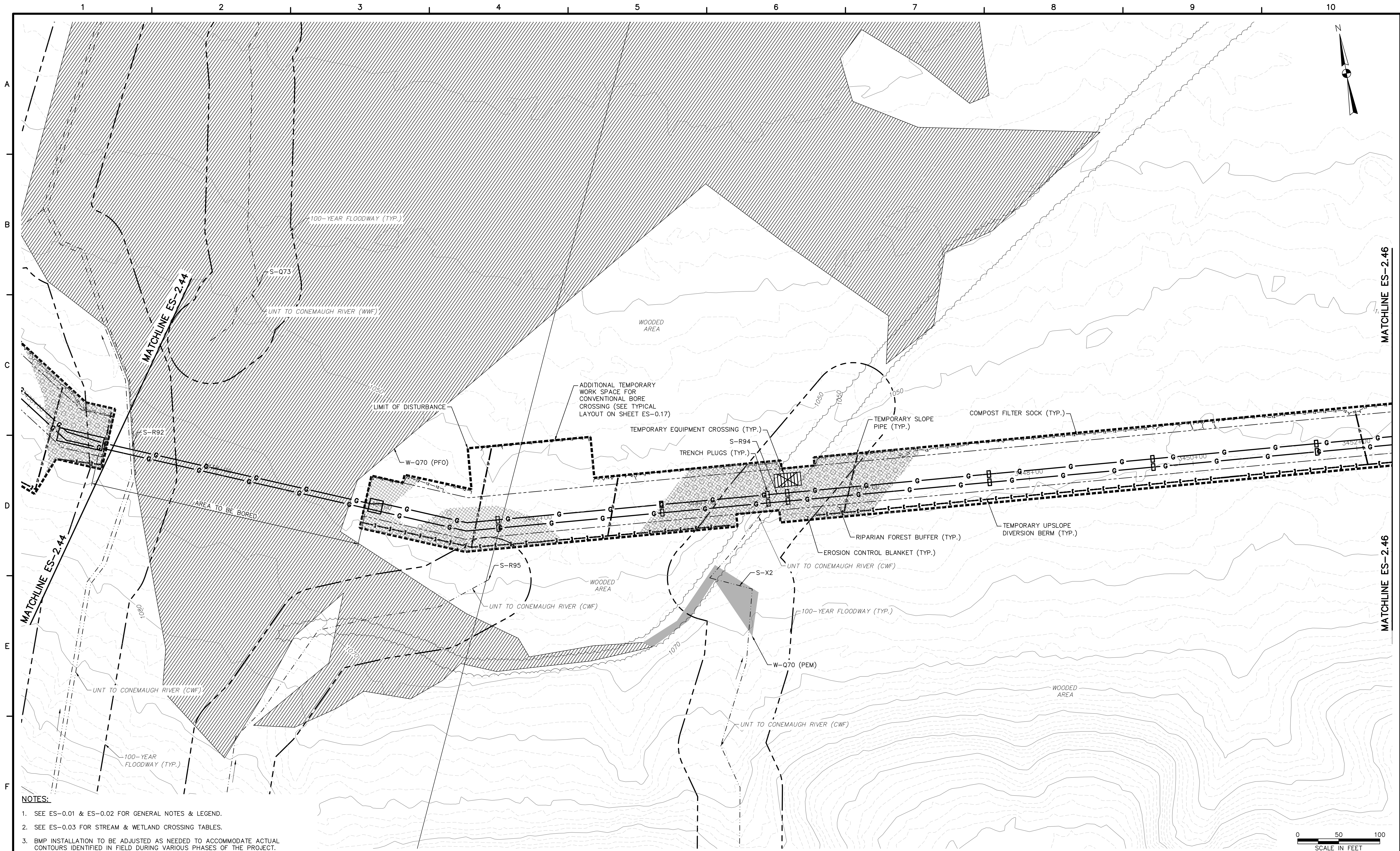
REVISIONS			
NO.	BY	DATE	REMARKS



SUNOCO PIPELINE L.P.
SINKING SPRING, PENNSYLVANIA
PENNSYLVANIA PIPELINE PROJECT
CONSTRUCTION SPREAD 2

1-16" & 1-20" PROPOSED WELDED STEEL NATURAL GAS LIQUIDS PIPELINES
WESTMORELAND COUNTY CONSERVATION DISTRICT
EROSION & SEDIMENT CONTROL &
SITE RESTORATION PLAN
SHEET 43 OF 47

DATE:	NOVEMBER 2016
PROJECT NO.:	112C05958
DESIGNED BY:	JB
DRAWN BY:	BH
CHECKED BY:	RS
COPYRIGHT TETRA TECH INC.	
ES-2.43	
SHEET 2.43 OF 74	

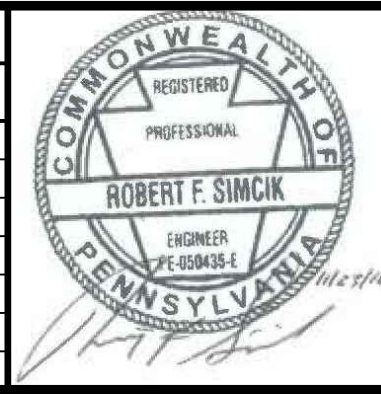


- NOTES:**
1. SEE ES-0.01 & ES-0.02 FOR GENERAL NOTES & LEGEND.
 2. SEE ES-0.03 FOR STREAM & WETLAND CROSSING TABLES.
 3. BMP INSTALLATION TO BE ADJUSTED AS NEEDED TO ACCOMMODATE ACTUAL CONTOURS IDENTIFIED IN FIELD DURING VARIOUS PHASES OF THE PROJECT.



TETRA TECH
www.tetrattech.com
661 ANDERSEN DRIVE - FOSTER PLAZA 7
PITTSBURGH, PA 15220
T: (412) 921-7090 | F: (412) 921-4040

REVISIONS			
NO.	BY	DATE	REMARKS



SUNOCO PIPELINE L.P.
SINKING SPRING, PENNSYLVANIA
**PENNSYLVANIA PIPELINE PROJECT
CONSTRUCTION SPREAD 2**

1-16" & 1-20" PROPOSED WELDED STEEL NATURAL GAS LIQUIDS PIPELINES
WESTMORELAND COUNTY CONSERVATION DISTRICT
**EROSION & SEDIMENT CONTROL &
SITE RESTORATION PLAN**
SHEET 45 OF 47

DATE:	NOVEMBER 2016
PROJECT NO.:	112C05958
DESIGNED BY:	JB
DRAWN BY:	BH
CHECKED BY:	RS
COPYRIGHT TETRA TECH INC.	
ES-2.45	
SHEET 2.45 OF 74	

