

SPLP has made revisions to the proposed workspaces in Delaware County since submittal of the Chapter 105 and 102 Permit Applications in March 2016. These revisions have been the result of landowner requests, agency requests, the avoidance of sensitive species or their habitats, and/or to further reduce impacts to aquatic resources. The additions and subtractions to the workspaces are listed and quantified within Table 1. In addition, this attachment highlights the location and extent of these additions and subtractions to the workspaces on a set of site plans. Each addition/subtraction has been assigned an identification code and that code is reflected below and on the set of site plans. The additions and subtractions are listed from west to east. A total of approximately 3.6923 acres was added and 10.1069 acres subtracted for a net decrease of 6.4146 acres of earth disturbance.

Table 1. Pennsylvania Pipeline Project LOD Additions and Subtractions.

CHANGE ID	COUNTY	REASON FOR CHANGE	ACREAGE	LOD ADDITION OR SUBTRACTION	WETLAND DELINEATION¹	PNDI EVALUATION²	SHEET NUMBER
Add-113	DELAWARE	Minor LOD adjustment needed to facilitate safe installation	0.1213	Addition	Yes	Yes	5
Add-114	DELAWARE	Minor LOD adjustment needed to facilitate safe installation	0.0287	Addition	Yes	Yes	9
Add-115	DELAWARE	Minor LOD adjustment needed to facilitate safe installation	0.0287	Addition	Yes	Yes	11
Sub-134	DELAWARE	Reduction of temporary workspace	0.1681	Subtraction	NA	NA	15
Add-116	DELAWARE	Minor LOD adjustment needed to facilitate safe installation	0.6622	Addition	Yes	Yes	20
Add-117	DELAWARE	Minor LOD adjustment needed to facilitate safe installation	0.6821	Addition	Yes	Yes	21
Sub-135	DELAWARE	Reduction and LOD adjustment of temporary workspace	1.6979	Subtraction	NA	NA	20
Add-118	DELAWARE	Minor LOD adjustment needed to facilitate safe installation	0.0825	Addition	Yes	Yes	21
Add-119	DELAWARE	Minor LOD adjustment needed to facilitate safe installation	0.0052	Addition	Yes	Yes	27
Add-120	DELAWARE	Minor LOD adjustment needed to facilitate safe installation	0.0057	Addition	Yes	Yes	28

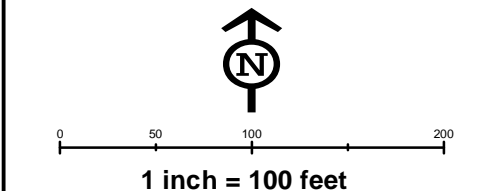
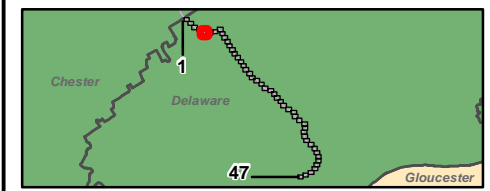
CHANGE ID	COUNTY	REASON FOR CHANGE	ACREAGE	LOD ADDITION OR SUBTRACTION	WETLAND DELINEATION¹	PNDI EVALUATION²	SHEET NUMBER
Add-121	DELAWARE	Minor LOD adjustment needed to facilitate safe installation	0.0031	Addition	Yes	Yes	29
Sub-136	DELAWARE	Minor LOD adjustment to minimize waterbody impact	0.0173	Subtraction	NA	NA	29
Twin Oaks Station Sub-3	DELAWARE	Station design change	5.4061	Subtraction	NA	NA	47
Add-122	DELAWARE	LOD adjustment to avoid residential impacts	1.8728	Addition	Yes	Yes	35
Add-123	DELAWARE	Minor LOD adjustment needed to facilitate safe installation	0.0465	Addition	Yes	Yes	35
Sub-137	DELAWARE	LOD adjustment to avoid tree clearing in floodplain	1.6864	Subtraction	NA	NA	35
Add-124	DELAWARE	Minor LOD adjustment needed to facilitate safe installation	0.0133	Addition	Yes	Yes	46
Add-125	DELAWARE	Minor LOD adjustment needed to facilitate safe installation	0.0622	Addition	Yes	Yes	37
Sub-138	DELAWARE	Tree clearing LOD adjustment to avoid commercial property	0.4054	Subtraction	NA	NA	38
Sub-139	DELAWARE	Tree clearing LOD adjustment to avoid residential impact	0.5131	Subtraction	NA	NA	39
Add-126	DELAWARE	Minor LOD adjustment needed to facilitate safe installation	0.078	Addition	Yes	Yes	44
Sub-140	DELAWARE	Minor LOD adjustment to minimize waterbody impact	0.2126	Subtraction	NA	NA	41

1 – The added area was field investigated for aquatic resources. Not applicable is listed for LOD subtractions.

2 – The added area was evaluated for PNDI. Not applicable is listed for LOD subtractions.



- Legend**
- Added Workspace
 - Removed Workspace
 - Proposed 20-inch Pipeline
 - Proposed 16-inch Pipeline
 - Bore Path
 - PPP 1 HDD
 - PPP 2 HDD
 - Permanent ROW
 - Temporary Workspace
 - Additional Temporary Workspace or ATWS
 - Block Valve Setting LOD
 - Permanent Access Road
 - Temporary Access Road
 - Travel LOD
 - Travel and Clearing LOD
 - Station
 - Ephemeral Stream
 - Intermittent Stream
 - Perennial Stream
 - Pond
 - PEM
 - PFO
 - PSS

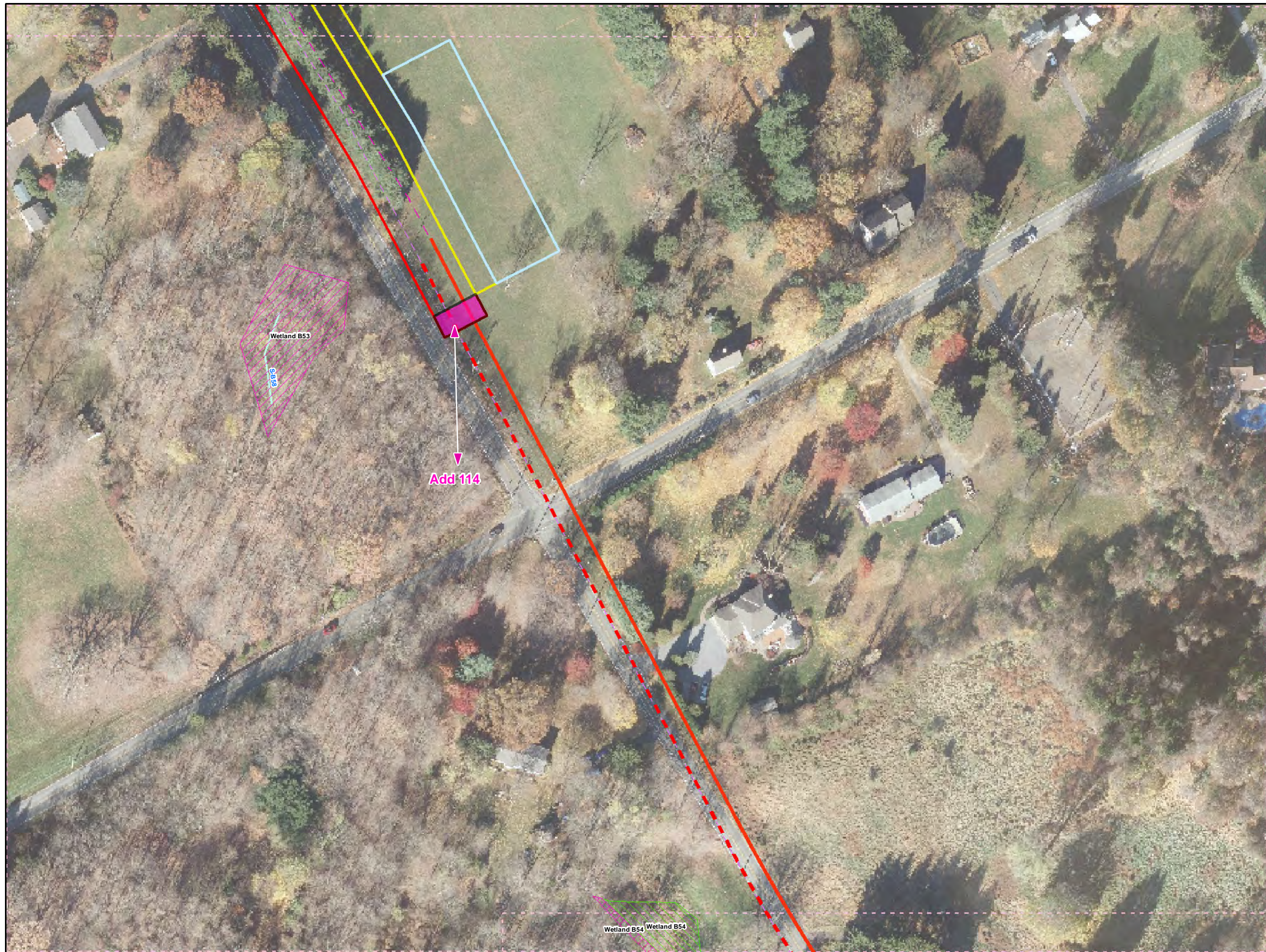


**Workspace Changes for the Sunoco
Pennsylvania Pipeline Project,
Delaware County, PA.
5 of 47**

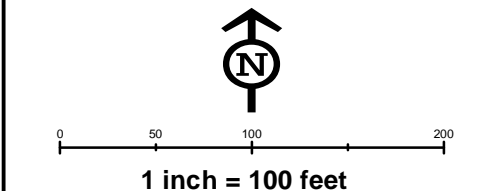
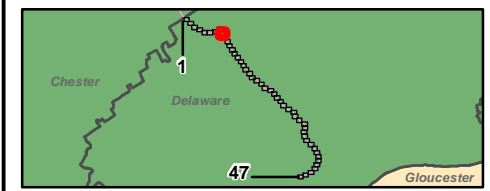
Prepared By: 	Date: 10/2016
-------------------------	--------------------------------

Base Map: Sunoco, 2013-2016
 Roads: ESRI World Imagery Transportation
 Coordinate System: NAD 83 Stateplane, PA South, Feet

B:\P:\GIS\PROJECTS\112206966-PPP\MAPS\PERMITS\COUNTY\PERMITS\STANDARD\RESPONSE\ADD\SUBMAPS\DELEWARE\COUNTY\ADDITION\SUBTRACTION\NR\MD 11/10/2016.JL



- Legend**
- Added Workspace
 - Removed Workspace
 - Proposed 20-inch Pipeline
 - Proposed 16-inch Pipeline
 - Bore Path
 - PPP 1 HDD
 - PPP 2 HDD
 - Permanent ROW
 - Temporary Workspace
 - Additional Temporary Workspace or ATWS
 - Block Valve Setting LOD
 - Permanent Access Road
 - Temporary Access Road
 - Travel LOD
 - Travel and Clearing LOD
 - Station
 - Ephemeral Stream
 - Intermittent Stream
 - Perennial Stream
 - Pond
 - PEM
 - PFO
 - PSS

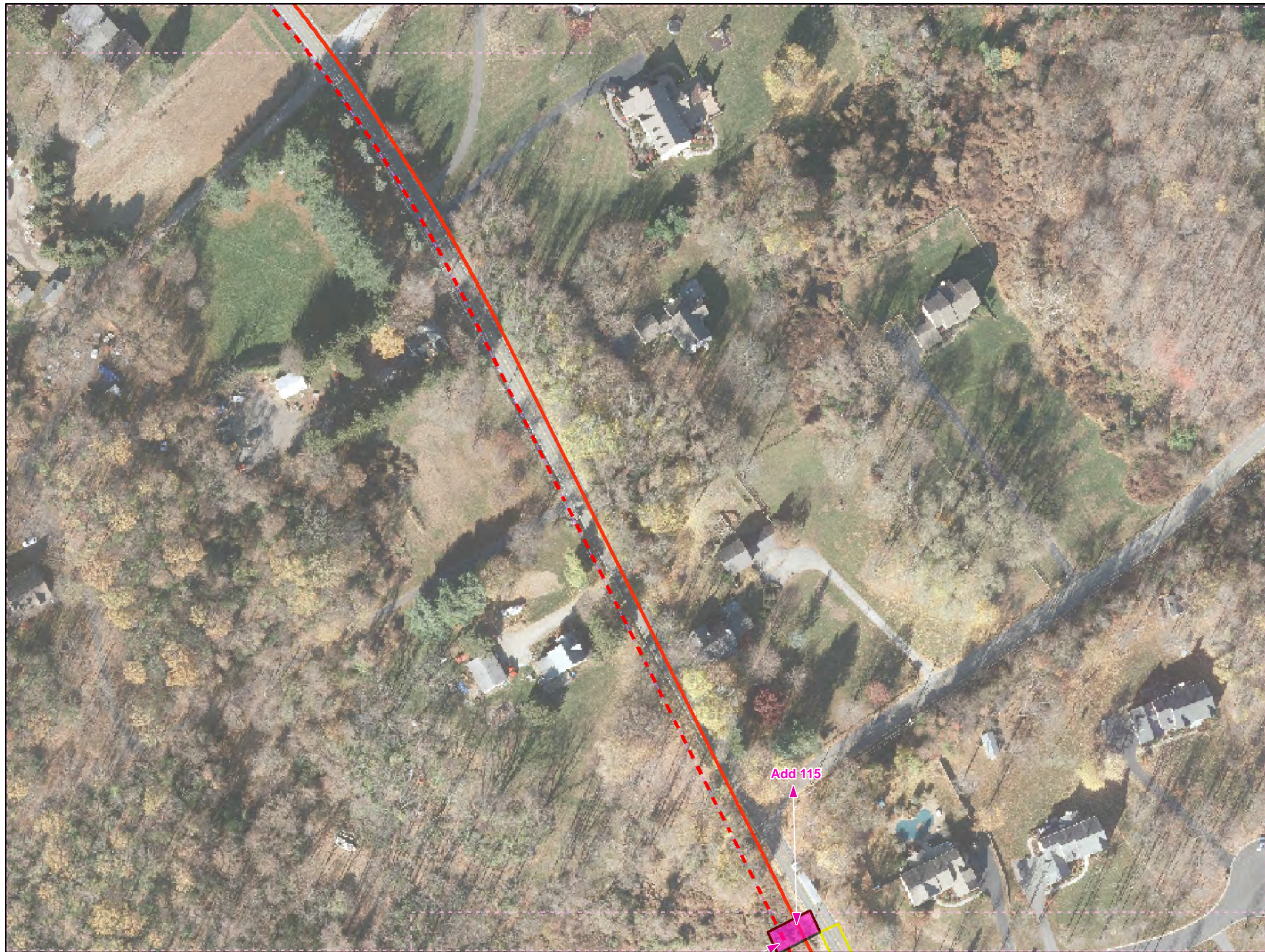


**Workspace Changes for the Sunoco
Pennsylvania Pipeline Project,
Delaware County, PA.
9 of 47**

Prepared By: 	Date: 10/2016
------------------	-------------------------

Base Map: Sunoco, 2013-2016
 Roads: ESRI World Imagery Transportation
 Coordinate System: NAD 83 Stateplane, PA South, Feet

B:\P\GIS\PROJECTS\1122059566-PPP\MAPS\PERMITS\COUNTY\PERMITS\STD...RESPONSE\ADD\SUBMAPS\DELEWARE\COUNTY\ADDITON...SUBTRACTION\NR\MAPD 11/10/2016 JL



Legend

- Added Workspace
- Removed Workspace
- Proposed 20-inch Pipeline
- Proposed 16-inch Pipeline
- Bore Path
- PPP 1 HDD
- PPP 2 HDD
- Permanent ROW
- Temporary Workspace
- Additional Temporary Workspace or ATWS
- Block Valve Setting LOD
- Permanent Access Road
- Temporary Access Road
- Travel LOD
- Travel and Clearing LOD
- Station
- Ephemeral Stream
- Intermittent Stream
- Perennial Stream
- Pond
- PEM
- PFO
- PSS

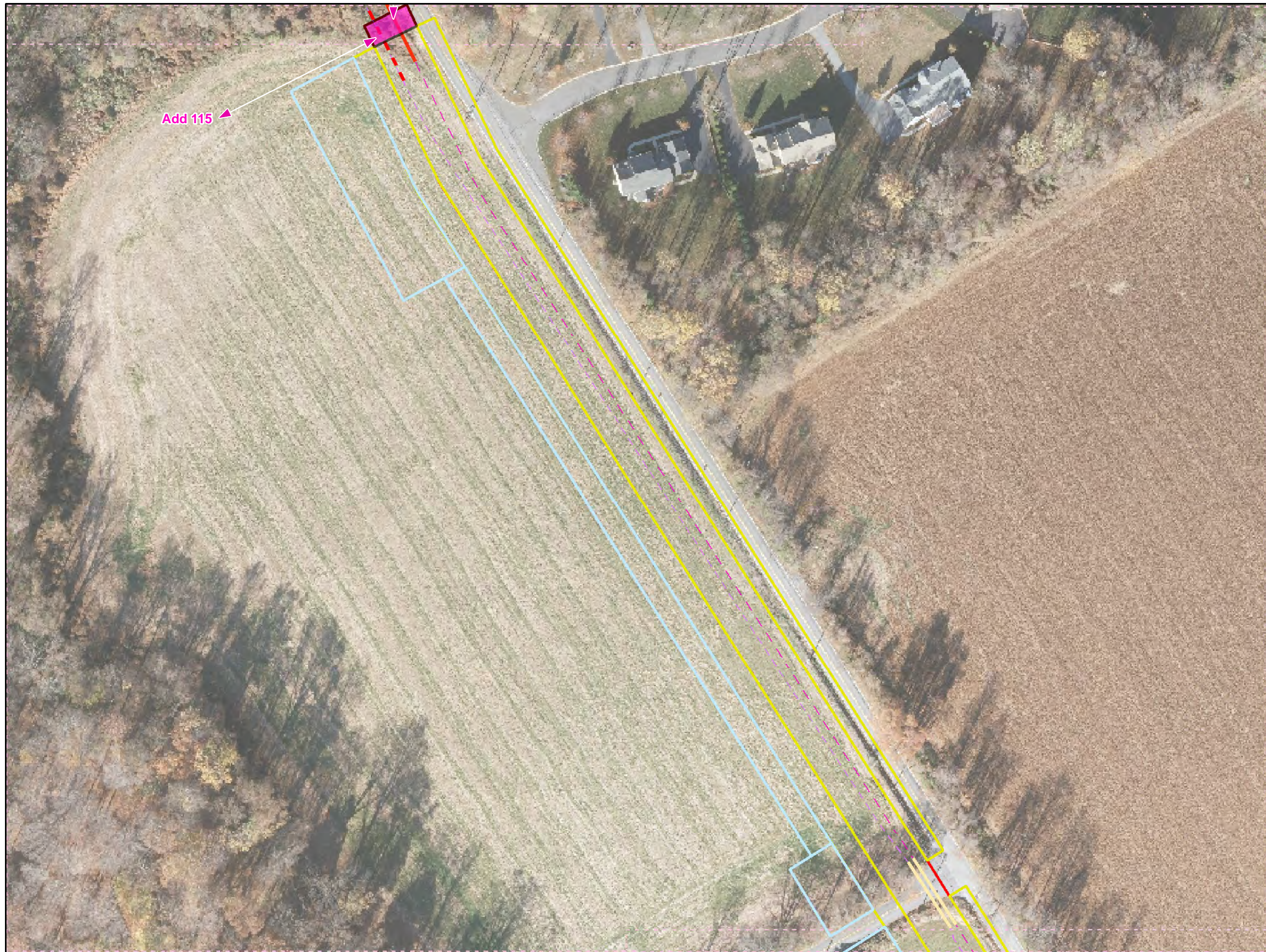
1 inch = 100 feet

Workspace Changes for the Sunoco Pennsylvania Pipeline Project, Delaware County, PA.
11 of 47

Prepared By:	Date:
	10/2016

Base Map: Sunoco, 2013-2016
 Roads: ESRI World Imagery Transportation
 Coordinate System: NAD 83 Stateplane, PA South, Feet

B:\P\GIS\PROJECTS\1122005956-PPP\MAPS\DELMAPS\DELEWARECOUNTY\ADDITION_SUBTRACTION\MD 11/10/2016.JL



Legend

- Added Workspace
- Removed Workspace
- Proposed 20-inch Pipeline
- Proposed 16-inch Pipeline
- Bore Path
- PPP 1 HDD
- PPP 2 HDD
- Permanent ROW
- Temporary Workspace
- Additional Temporary Workspace or ATWS
- Block Valve Setting LOD
- Permanent Access Road
- Temporary Access Road
- Travel LOD
- Travel and Clearing LOD
- Station
- Ephemeral Stream
- Intermittent Stream
- Perennial Stream
- Pond
- PEM
- PFO
- PSS

1 inch = 100 feet

Workspace Changes for the Sunoco Pennsylvania Pipeline Project, Delaware County, PA.
12 of 47

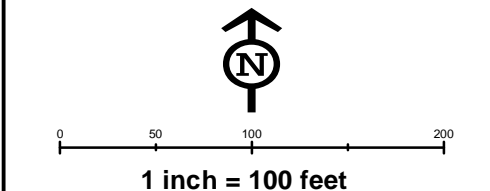
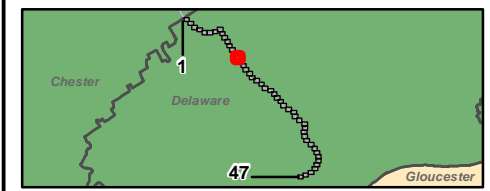
Prepared By: 	Date: 10/2016
-------------------------	--------------------------------

Base Map: Sunoco, 2013-2016
 Roads: ESRI World Imagery Transportation
 Coordinate System: NAD 83 Stateplane, PA South, Feet

BUFP:GIS\PROJECTS\1122005956-PPP\MAPS\PERMITS\COUNTY\PERMITS\STID_RESPONSE\ADD\SUBMAPS\DELEWARE\COUNTY\ADDITION_SUBTRACTION\MD 11/10/2016-JL



- Legend**
- Added Workspace
 - Removed Workspace
 - Proposed 20-inch Pipeline
 - Proposed 16-inch Pipeline
 - Bore Path
 - PPP 1 HDD
 - PPP 2 HDD
 - Permanent ROW
 - Temporary Workspace
 - Additional Temporary Workspace or ATWS
 - Block Valve Setting LOD
 - Permanent Access Road
 - Temporary Access Road
 - Travel LOD
 - Travel and Clearing LOD
 - Station
 - Ephemeral Stream
 - Intermittent Stream
 - Perennial Stream
 - Pond
 - PEM
 - PFO
 - PSS

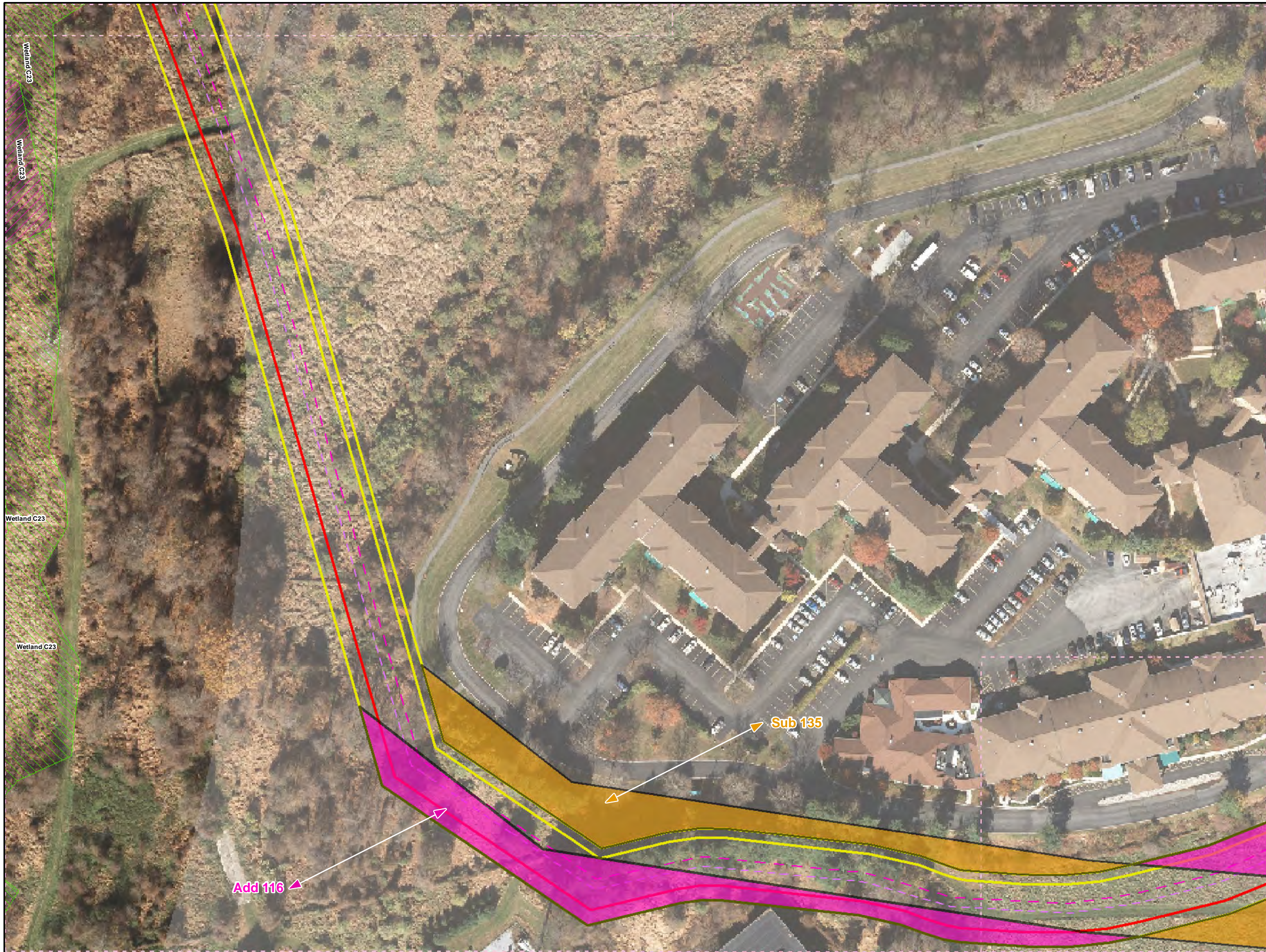


**Workspace Changes for the Sunoco
Pennsylvania Pipeline Project,
Delaware County, PA.
15 of 47**

Prepared By:	Date:
	10/2016

Base Map: Sunoco, 2013-2016
 Roads: ESRI World Imagery Transportation
 Coordinate System: NAD 83 Stateplane, PA South, Feet

B:\P\GIS\PROJECTS\1122005656-PPP\MAPS\SUBMAPS\DELAWARECOUNTY\ADDITION\SUBTRACTION\MAP_11/10/2016_JL



Legend

- Added Workspace
- Removed Workspace
- Proposed 20-inch Pipeline
- Proposed 16-inch Pipeline
- Bore Path
- PPP 1 HDD
- PPP 2 HDD
- Permanent ROW
- Temporary Workspace
- Additional Temporary Workspace or ATWS
- Block Valve Setting LOD
- Permanent Access Road
- Temporary Access Road
- Travel LOD
- Travel and Clearing LOD
- Station
- Ephemeral Stream
- Intermittent Stream
- Perennial Stream
- Pond
- PEM
- PFO
- PSS

1
47

N

0 50 100 200

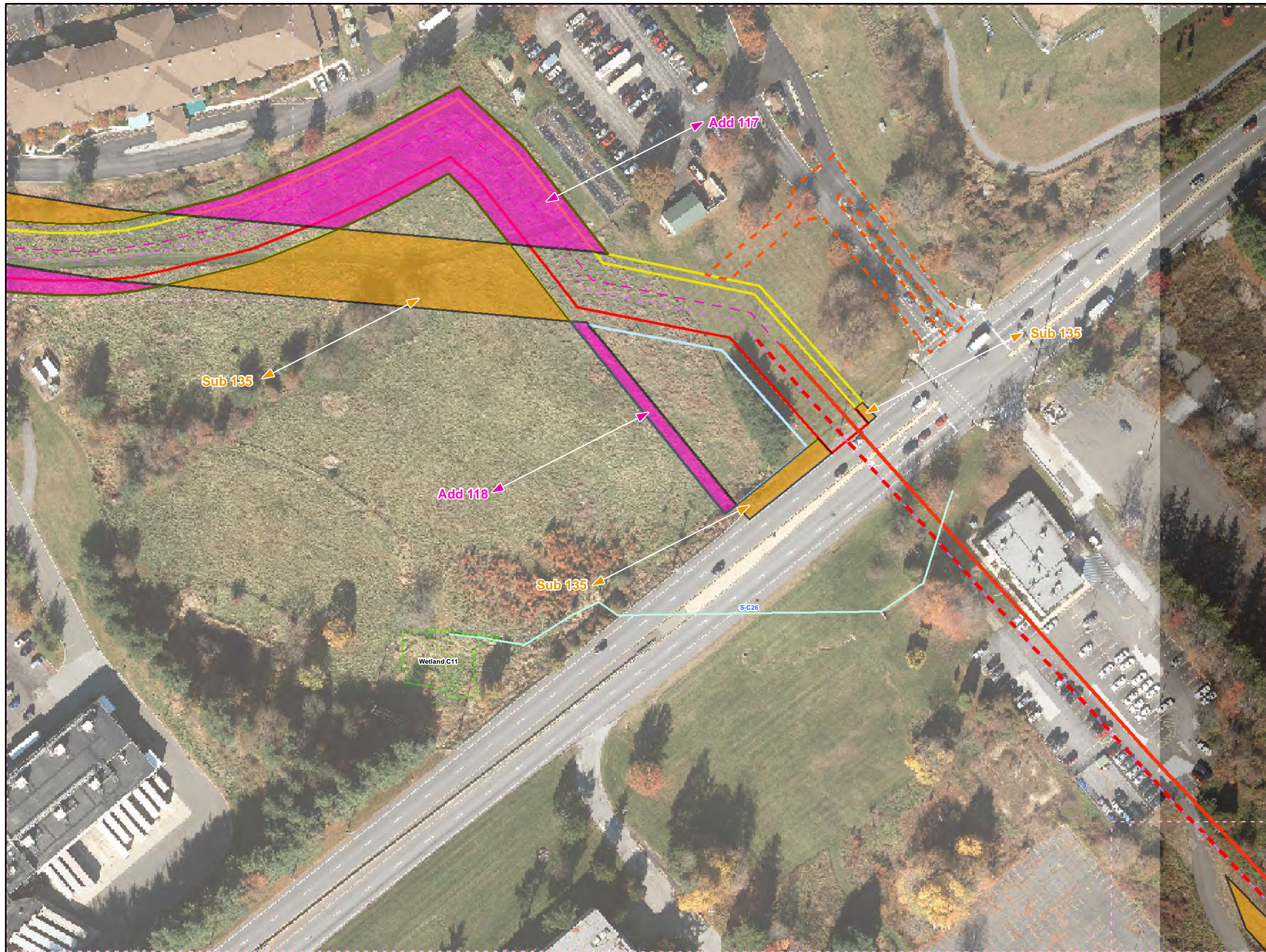
1 inch = 100 feet

**Workspace Changes for the Sunoco
Pennsylvania Pipeline Project,
Delaware County, PA.
20 of 47**

Prepared By:	Date:
TETRA TECH	10/2016

Base Map: Sunoco, 2013-2016
Roads: ESRI World Imagery Transportation
Coordinate System: NAD 83 Stateplane, PA South, Feet

B:\P:\GIS\PROJECTS\1122069566-PPP\MAPS\PERMITS\COUNTY\PERMITS\STANDARD\RESPONSE\ADDSUBMAPS\DELEWARECOUNTY\ADDITION\SUBTRACTION\MD 11/10/2016.JL



Legend

- Added Workspace
- Removed Workspace
- Proposed 20-inch Pipeline
- Proposed 16-inch Pipeline
- Bore Path
- PPP 1 HDD
- PPP 2 HDD
- Permanent ROW
- Temporary Workspace
- Additional Temporary Workspace or ATWS
- Block Valve Setting LOD
- Permanent Access Road
- Temporary Access Road
- Travel LOD
- Travel and Clearing LOD
- Station
- Ephemeral Stream
- Intermittent Stream
- Perennial Stream
- Pond
- PEM
- PFO
- PSS

1
47
Gloucester

N

0 50 100 200

1 inch = 100 feet

Workspace Changes for the Sunoco Pennsylvania Pipeline Project, Delaware County, PA.
21 of 47

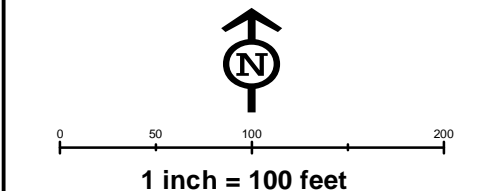
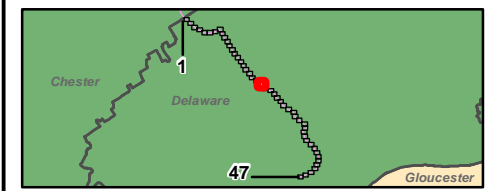
Prepared By:	Date:
TETRA TECH	10/2016

Base Map: Sunoco, 2013-2016
Roads: ESRI World Imagery Transportation
Coordinate System: NAD 83 Stateplane, PA South, Feet

B:\P\GIS\PROJECTS\1122069666-PPP\MAPS\SUBMAPS\DELEWARECOUNTY\ADDITION\SUBTRACTION\MAP_11/10/2016.JPG



- Legend**
- Added Workspace
 - Removed Workspace
 - Proposed 20-inch Pipeline
 - Proposed 16-inch Pipeline
 - Bore Path
 - PPP 1 HDD
 - PPP 2 HDD
 - Permanent ROW
 - Temporary Workspace
 - Additional Temporary Workspace or ATWS
 - Block Valve Setting LOD
 - Permanent Access Road
 - Temporary Access Road
 - Travel LOD
 - Travel and Clearing LOD
 - Station
 - Ephemeral Stream
 - Intermittent Stream
 - Perennial Stream
 - Pond
 - PEM
 - PFO
 - PSS

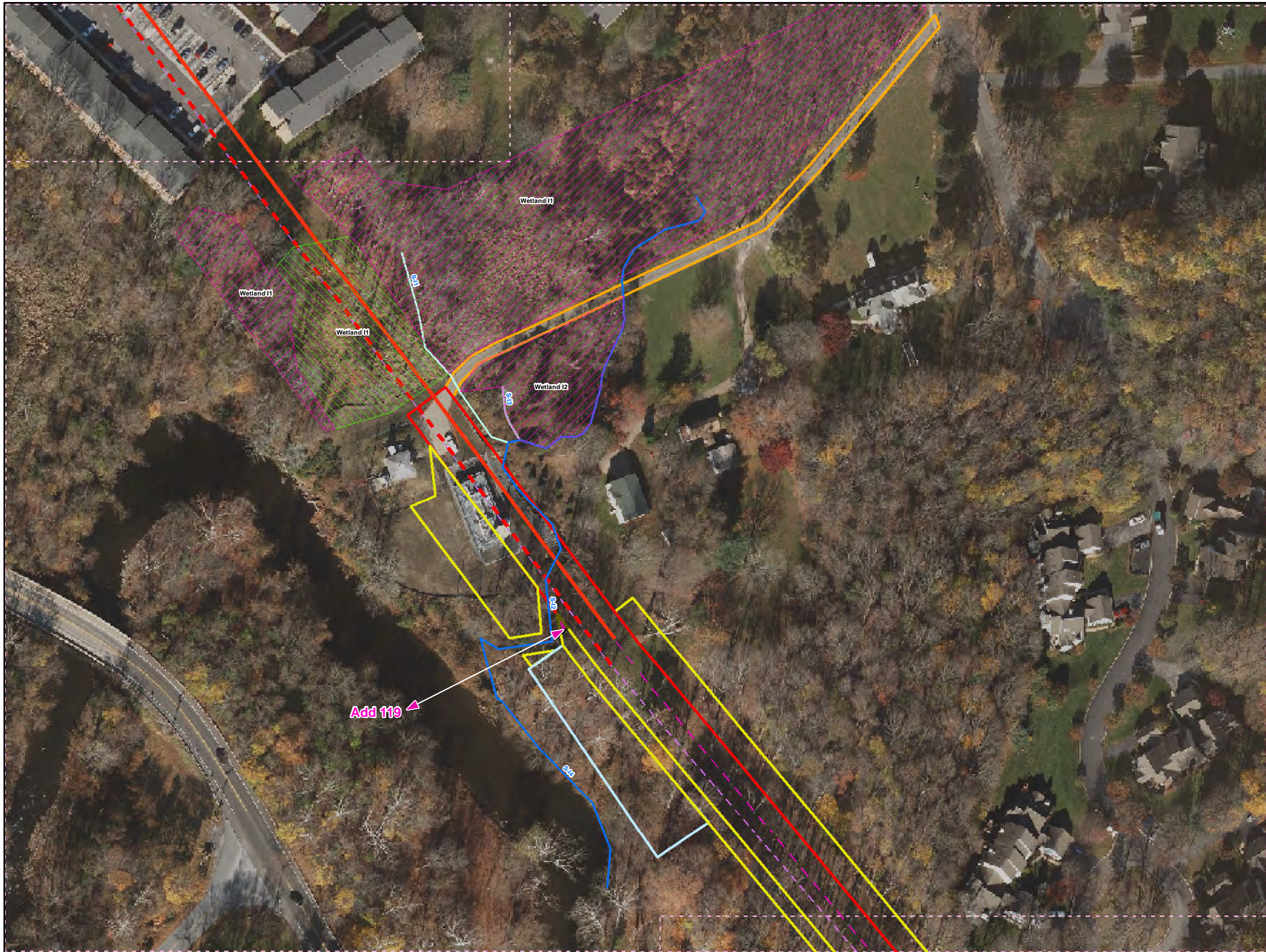


**Workspace Changes for the Sunoco
Pennsylvania Pipeline Project,
Delaware County, PA.
22 of 47**

Prepared By: TETRA TECH	Date: 10/2016
-----------------------------------	-------------------------

Base Map: Sunoco, 2013-2016
Roads: ESRI World Imagery Transportation
Coordinate System: NAD 83 Stateplane, PA South, Feet

B:\P\GIS\PROJECTS\1122059566-PPP\MAPS\SUBMAPS\DELEWARECOUNTY\ADDITION_SUBTRACTION\MAP_11/10/2016_JL



Legend

- Added Workspace
- Removed Workspace
- Proposed 20-inch Pipeline
- Proposed 16-inch Pipeline
- Bore Path
- PPP 1 HDD
- PPP 2 HDD
- Permanent ROW
- Temporary Workspace
- Additional Temporary Workspace or ATWS
- Block Valve Setting LOD
- Permanent Access Road
- Temporary Access Road
- Travel LOD
- Travel and Clearing LOD
- Station
- Ephemeral Stream
- Intermittent Stream
- Perennial Stream
- Pond
- PEM
- PFO
- PSS

1 inch = 100 feet

Workspace Changes for the Sunoco Pennsylvania Pipeline Project, Delaware County, PA.
27 of 47

Prepared By: 	Date: 10/2016
------------------	-------------------------

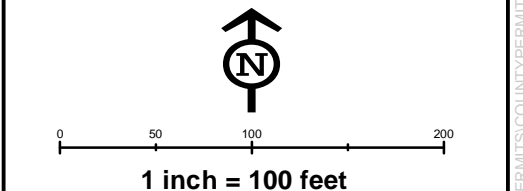
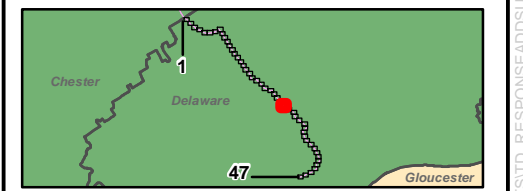
Base Map: Sunoco, 2013-2016
 Roads: ESRI World Imagery Transportation
 Coordinate System: NAD 83 Stateplane, PA South, Feet

B:\P\GIS\PROJECTS\1122069666-PPP\MAPS\PERMIT\STANDARD\SUBTRACT\COUNTY\ADDITION\SUBTRACT\COUNTY\ADDITION\11/10/2016.JL



- Legend**
- Added Workspace
 - Removed Workspace
 - Proposed 20-inch Pipeline
 - Proposed 16-inch Pipeline
 - Bore Path
 - PPP 1 HDD
 - PPP 2 HDD
 - Permanent ROW
 - Temporary Workspace
 - Additional Temporary Workspace or ATWS
 - Block Valve Setting LOD
 - Permanent Access Road
 - Temporary Access Road
 - Travel LOD
 - Travel and Clearing LOD
 - Station
 - Ephemeral Stream
 - Intermittent Stream
 - Perennial Stream
 - Pond
 - PEM
 - PFO
 - PSS

Add 119
Add 120



Workspace Changes for the Sunoco Pennsylvania Pipeline Project, Delaware County, PA.
28 of 47

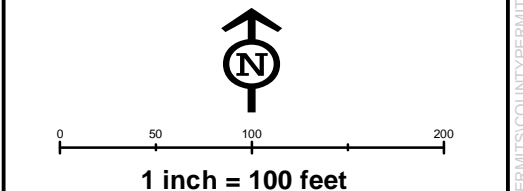
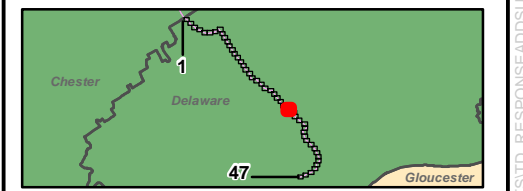
Prepared By: TETRA TECH	Date: 10/2016
----------------------------	-------------------------

Base Map: Sunoco, 2013-2016
Roads: ESRI World Imagery Transportation
Coordinate System: NAD 83 Stateplane, PA South, Feet

B:\P:\GIS\PROJECTS\122005656-PPP\MAPS\PERMITS\COUNTY\PERMITS\STID_RESPONSE\ADDSUBMAPS\DELEWARE\COUNTY\ADDITION_SUBTRACTION\MAP_11/10/2016_JL



- Legend**
- Added Workspace
 - Removed Workspace
 - Proposed 20-inch Pipeline
 - Proposed 16-inch Pipeline
 - Bore Path
 - PPP 1 HDD
 - PPP 2 HDD
 - Permanent ROW
 - Temporary Workspace
 - Additional Temporary Workspace or ATWS
 - Block Valve Setting LOD
 - Permanent Access Road
 - Temporary Access Road
 - Travel LOD
 - Travel and Clearing LOD
 - Station
 - Ephemeral Stream
 - Intermittent Stream
 - Perennial Stream
 - Pond
 - PEM
 - PFO
 - PSS

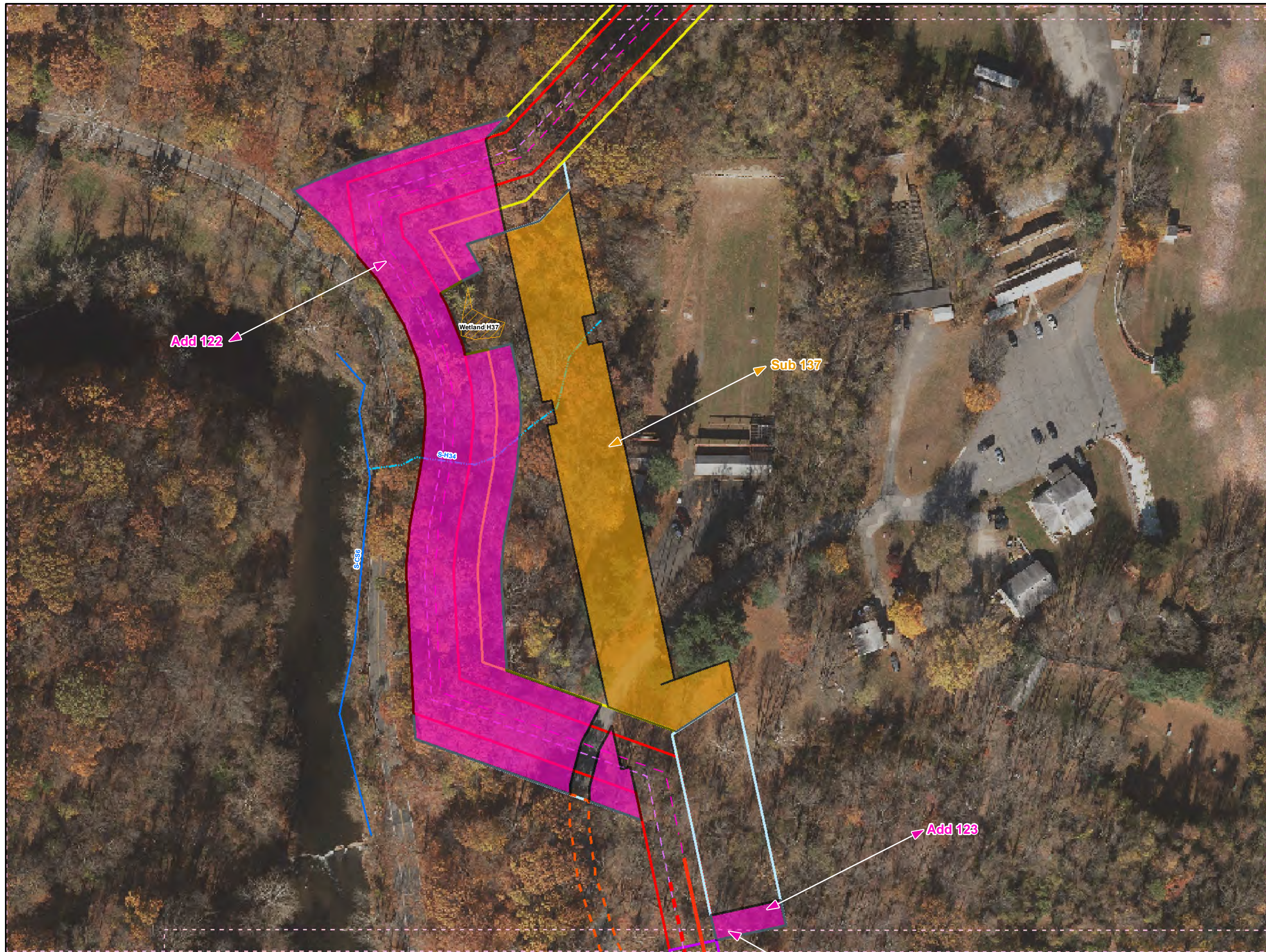


**Workspace Changes for the Sunoco
Pennsylvania Pipeline Project,
Delaware County, PA.
29 of 47**

Prepared By: 	Date: 10/2016
------------------	-------------------------

Base Map: Sunoco, 2013-2016
 Roads: ESRI World Imagery Transportation
 Coordinate System: NAD 83 Stateplane, PA South, Feet

BUFP:GIS\PROJECTS\122059566-PPP\MAPS\PERMITS\COUNTY\PERMITS\STANDARD\RESPONSE\ADDSUBMAPS\DELEWARECOUNTY\ADDITION\SUBTRACTION\RAD 11/10/2016.JL



Legend

- Added Workspace
- Removed Workspace
- Proposed 20-inch Pipeline
- Proposed 16-inch Pipeline
- Bore Path
- PPP 1 HDD
- PPP 2 HDD
- Permanent ROW
- Temporary Workspace
- Additional Temporary Workspace or ATWS
- Block Valve Setting LOD
- Permanent Access Road
- Temporary Access Road
- Travel LOD
- Travel and Clearing LOD
- Station
- Ephemeral Stream
- Intermittent Stream
- Perennial Stream
- Pond
- PEM
- PFO
- PSS

Chester Delaware Gloucester

1 47

N

0 50 100 200

1 inch = 100 feet

Workspace Changes for the Sunoco Pennsylvania Pipeline Project, Delaware County, PA.
35 of 47

Prepared By: 	Date: 10/2016
-------------------------	--------------------------------

Base Map: Sunoco, 2013-2016
 Roads: ESRI World Imagery Transportation
 Coordinate System: NAD 83 Stateplane, PA South, Feet

B:\P:\GIS\PROJECTS\122059566-PPP\MAPS\DELEWARECOUNTY\ADDITION_SUBTRACTION\MAP_11/10/2016_JL



Legend

- Added Workspace
- Removed Workspace
- Proposed 20-inch Pipeline
- Proposed 16-inch Pipeline
- Bore Path
- PPP 1 HDD
- PPP 2 HDD
- Permanent ROW
- Temporary Workspace
- Additional Temporary Workspace or ATWS
- Block Valve Setting LOD
- Permanent Access Road
- Temporary Access Road
- Travel LOD
- Travel and Clearing LOD
- Station
- Ephemeral Stream
- Intermittent Stream
- Perennial Stream
- Pond
- PEM
- PFO
- PSS

Chester Delaware Gloucester

0 50 100 200

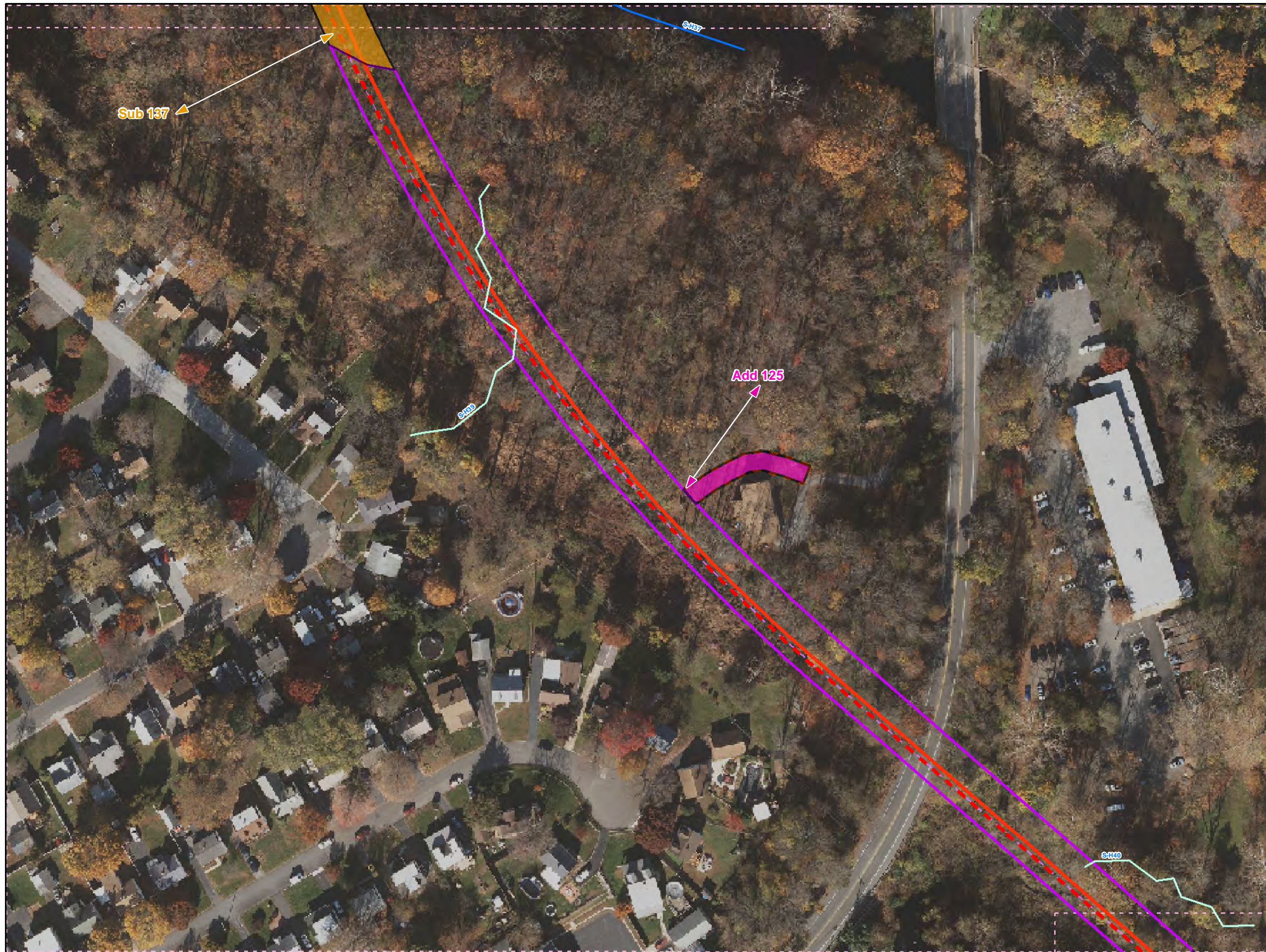
1 inch = 100 feet

Workspace Changes for the Sunoco Pennsylvania Pipeline Project, Delaware County, PA.
36 of 47

Prepared By:	Date:
	10/2016

Base Map: Sunoco, 2013-2016
 Roads: ESRI World Imagery Transportation
 Coordinate System: NAD 83 Stateplane, PA South, Feet

B:\P:\GIS\PROJECTS\122005956-PPP\MAPS\PERMITS\COUNTY\PERMITS\STANDARD\RESPONSE\ADDSUBMAPS\DELEWARECOUNTY\ADDITION\SUBTRACTION\MAP_11/10/2016.JPG



Legend

- Added Workspace
- Removed Workspace
- Proposed 20-inch Pipeline
- Proposed 16-inch Pipeline
- Bore Path
- PPP 1 HDD
- PPP 2 HDD
- Permanent ROW
- Temporary Workspace
- Additional Temporary Workspace or ATWS
- Block Valve Setting LOD
- Permanent Access Road
- Temporary Access Road
- Travel LOD
- Travel and Clearing LOD
- Station
- Ephemeral Stream
- Intermittent Stream
- Perennial Stream
- Pond
- PEM
- PFO
- PSS

Chester Delaware Gloucester

↑ N

0 50 100 200

1 inch = 100 feet

**Workspace Changes for the Sunoco
Pennsylvania Pipeline Project,
Delaware County, PA.**

37 of 47

Prepared By:	Date:
	10/2016

Base Map: Sunoco, 2013-2016
 Roads: ESRI World Imagery Transportation
 Coordinate System: NAD 83 Stateplane, PA South, Feet

BU:\P:\GIS\PROJECTS\112206966-PPP\MAPS\PERMITS\COUNTY\PERMITS\STD...RESPONSE\ADDSUBMAPS\DELEWARECOUNTY\ADDITION...SUBTRACTION\RAD 11/10/2016.JL



Legend

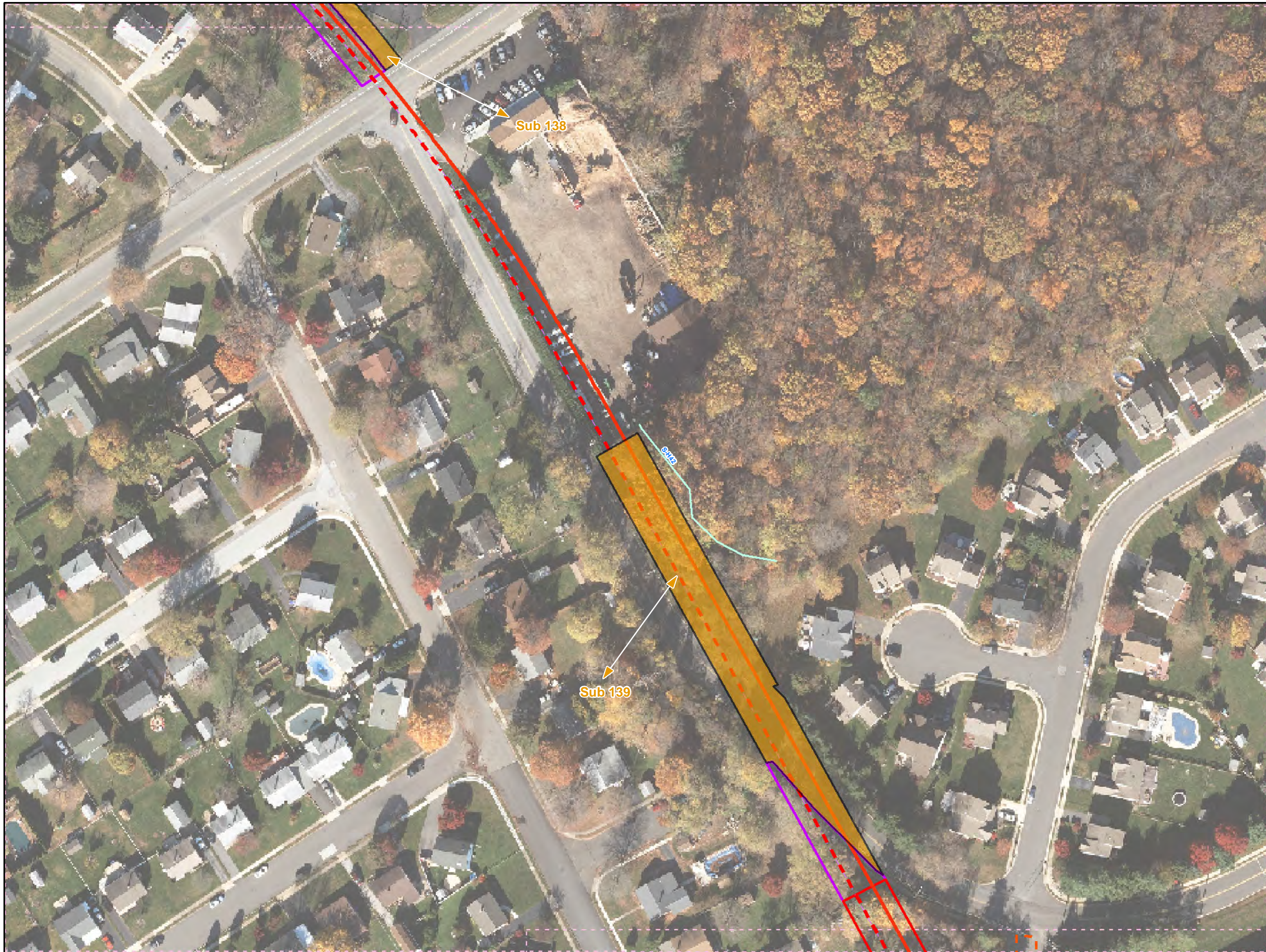
- Added Workspace
- Removed Workspace
- Proposed 20-inch Pipeline
- Proposed 16-inch Pipeline
- Bore Path
- PPP 1 HDD
- PPP 2 HDD
- Permanent ROW
- Temporary Workspace
- Additional Temporary Workspace or ATWS
- Block Valve Setting LOD
- Permanent Access Road
- Temporary Access Road
- Travel LOD
- Travel and Clearing LOD
- Station
- Ephemeral Stream
- Intermittent Stream
- Perennial Stream
- Pond
- PEM
- PFO
- PSS

1 inch = 100 feet

Workspace Changes for the Sunoco Pennsylvania Pipeline Project, Delaware County, PA.
38 of 47

Prepared By:	Date:
	10/2016

Base Map: Sunoco, 2013-2016
 Roads: ESRI World Imagery Transportation
 Coordinate System: NAD 83 Stateplane, PA South, Feet



Legend

- Added Workspace
- Removed Workspace
- Proposed 20-inch Pipeline
- Proposed 16-inch Pipeline
- Bore Path
- PPP 1 HDD
- PPP 2 HDD
- Permanent ROW
- Temporary Workspace
- Additional Temporary Workspace or ATWS
- Block Valve Setting LOD
- Permanent Access Road
- Temporary Access Road
- Travel LOD
- Travel and Clearing LOD
- Station
- Ephemeral Stream
- Intermittent Stream
- Perennial Stream
- Pond
- PEM
- PFO
- PSS

1
47

N

0 50 100 200

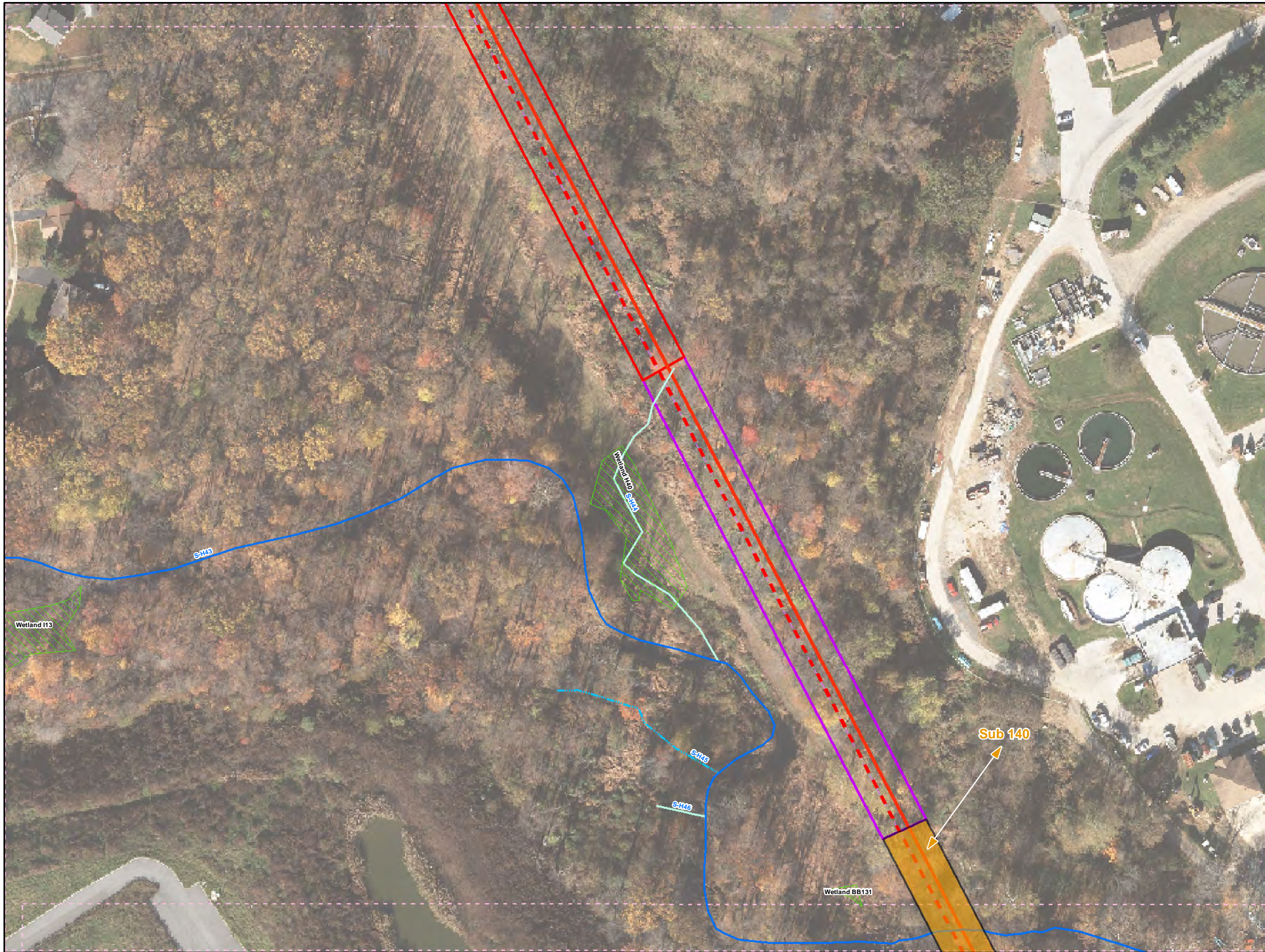
1 inch = 100 feet

**Workspace Changes for the Sunoco
Pennsylvania Pipeline Project,
Delaware County, PA.
39 of 47**

Prepared By:	Date:
	10/2016

Base Map: Sunoco, 2013-2016
Roads: ESRI World Imagery Transportation
Coordinate System: NAD 83 Stateplane, PA South, Feet

B:\P:\GIS\PROJECTS\1122059566-PPP\MAPS\PERMITS\COUNTY\PERMITS\STANDARD_RESPONSE\ADDSUBMAPS\DELAWARECOUNTY\ADDITION_SUBTRACTION\11/10/2016_JL



Legend

- Added Workspace
- Removed Workspace
- Proposed 20-inch Pipeline
- Proposed 16-inch Pipeline
- Bore Path
- PPP 1 HDD
- PPP 2 HDD
- Permanent ROW
- Temporary Workspace
- Additional Temporary Workspace or ATWS
- Block Valve Setting LOD
- Permanent Access Road
- Temporary Access Road
- Travel LOD
- Travel and Clearing LOD
- Station
- Ephemeral Stream
- Intermittent Stream
- Perennial Stream
- Pond
- PEM
- PFO
- PSS

Chester Delaware Gloucester

1 47

N

0 50 100 200

1 inch = 100 feet

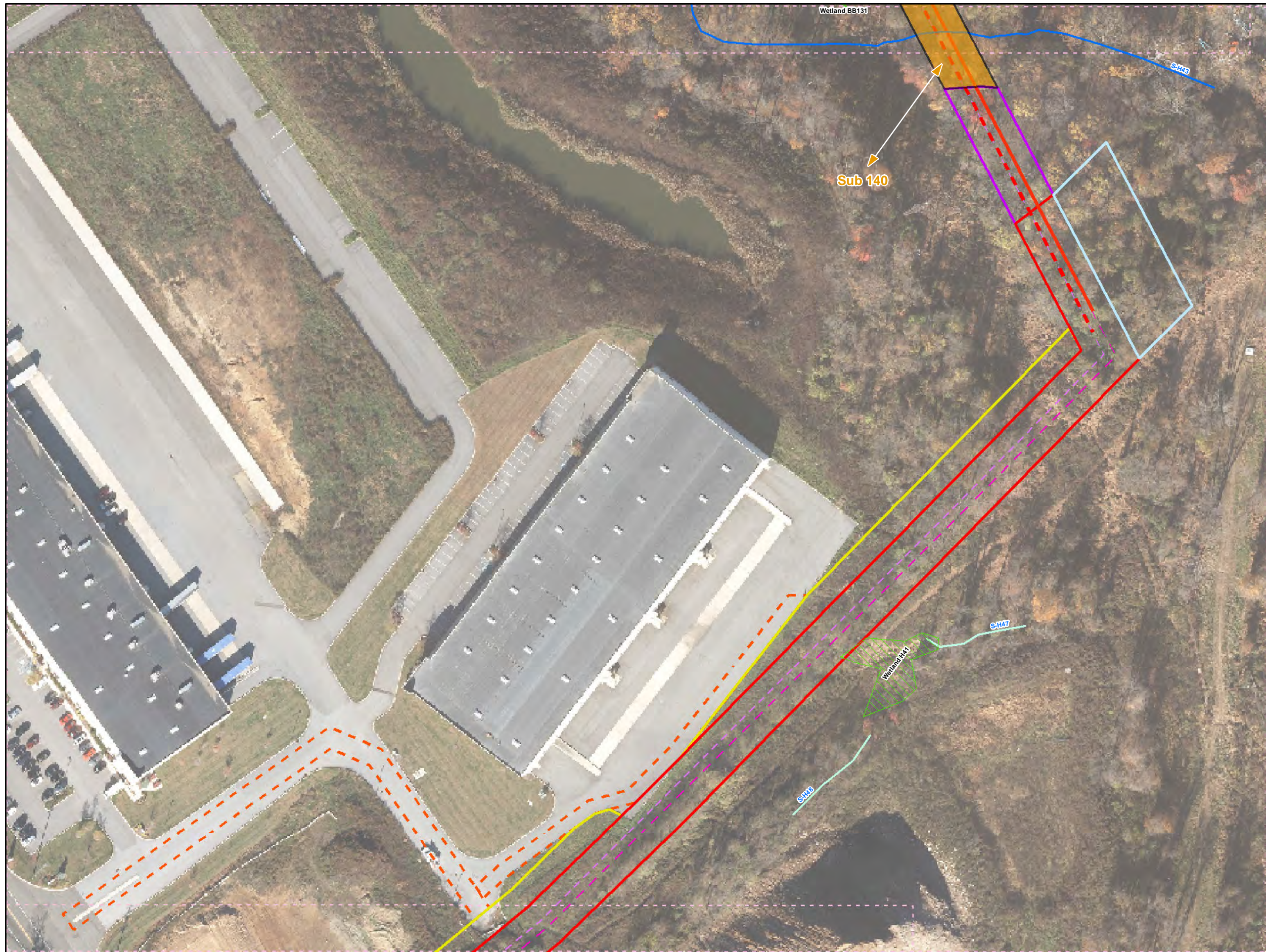
Workspace Changes for the Sunoco Pennsylvania Pipeline Project, Delaware County, PA.

41 of 47

Prepared By: 	Date: 10/2016
-------------------------	--------------------------------

Base Map: Sunoco, 2013-2016
 Roads: ESRI World Imagery Transportation
 Coordinate System: NAD 83 Stateplane, PA South, Feet

B:\P\GIS\PROJECTS\1122059566-PPP\MAPS\SUBMAPS\DELAWARECOUNTY\ADDITION_SUBTRACTION\MAP_11/10/2016_JL



Legend

- Added Workspace
- Removed Workspace
- Proposed 20-inch Pipeline
- Proposed 16-inch Pipeline
- Bore Path
- PPP 1 HDD
- PPP 2 HDD
- Permanent ROW
- Temporary Workspace
- Additional Temporary Workspace or ATWS
- Block Valve Setting LOD
- Permanent Access Road
- Temporary Access Road
- Travel LOD
- Travel and Clearing LOD
- Station
- Ephemeral Stream
- Intermittent Stream
- Perennial Stream
- Pond
- PEM
- PFO
- PSS

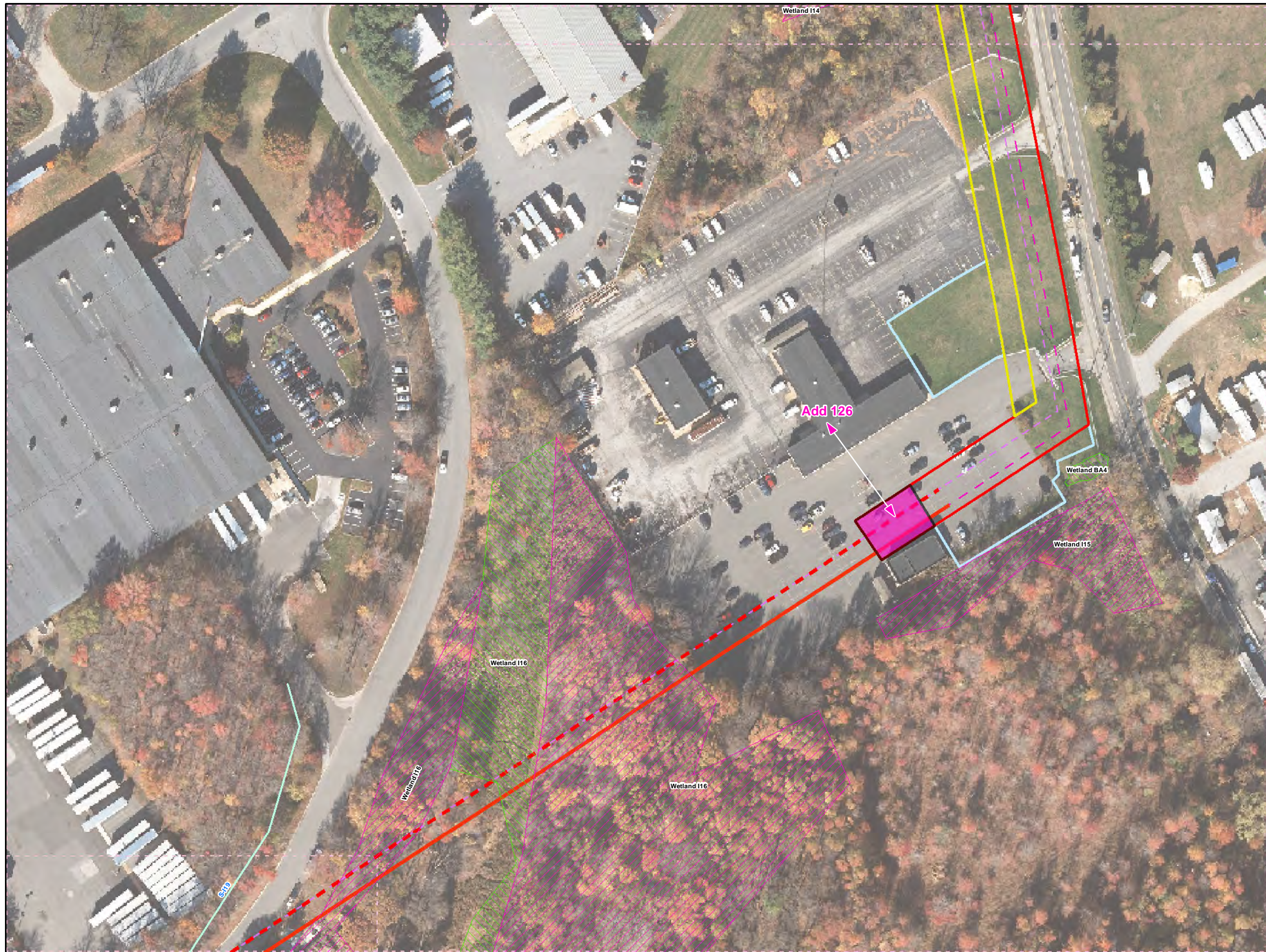
Chester Delaware Gloucester

1 inch = 100 feet

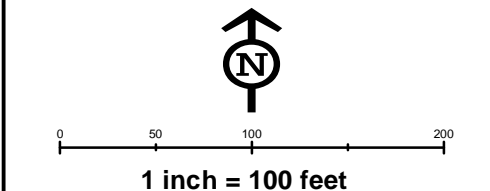
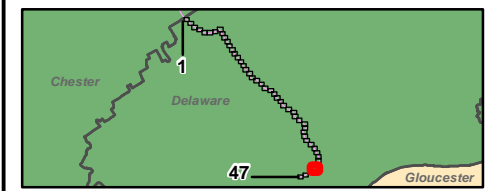
**Workspace Changes for the Sunoco
Pennsylvania Pipeline Project,
Delaware County, PA.
42 of 47**

Prepared By: 	Date: 10/2016
------------------	-------------------------

Base Map: Sunoco, 2013-2016
 Roads: ESRI World Imagery Transportation
 Coordinate System: NAD 83 Stateplane, PA South, Feet



- Legend**
- Added Workspace
 - Removed Workspace
 - Proposed 20-inch Pipeline
 - Proposed 16-inch Pipeline
 - Bore Path
 - PPP 1 HDD
 - PPP 2 HDD
 - Permanent ROW
 - Temporary Workspace
 - Additional Temporary Workspace or ATWS
 - Block Valve Setting LOD
 - Permanent Access Road
 - Temporary Access Road
 - Travel LOD
 - Travel and Clearing LOD
 - Station
 - Ephemeral Stream
 - Intermittent Stream
 - Perennial Stream
 - Pond
 - PEM
 - PFO
 - PSS



**Workspace Changes for the Sunoco
Pennsylvania Pipeline Project,
Delaware County, PA.
44 of 47**

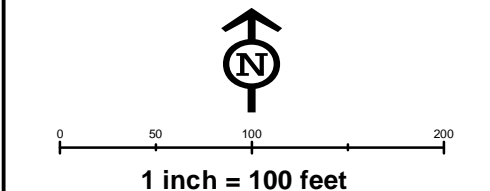
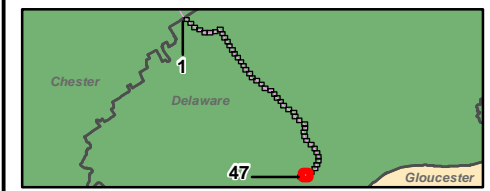
Prepared By: TETRA TECH	Date: 10/2016
-----------------------------------	-------------------------

Base Map: Sunoco, 2013-2016
Roads: ESRI World Imagery Transportation
Coordinate System: NAD 83 Stateplane, PA South, Feet

B:\P\GIS\PROJECTS\1122005956-PPP\MAPS\SUBMAPS\DELEWARECOUNTY\ADDITION_SUBTRACTION\MAP_11/10/2016_JL



- Legend**
- Added Workspace
 - Removed Workspace
 - Proposed 20-inch Pipeline
 - Proposed 16-inch Pipeline
 - Bore Path
 - PPP 1 HDD
 - PPP 2 HDD
 - Permanent ROW
 - Temporary Workspace
 - Additional Temporary Workspace or ATWS
 - Block Valve Setting LOD
 - Permanent Access Road
 - Temporary Access Road
 - Travel LOD
 - Travel and Clearing LOD
 - Station
 - Ephemeral Stream
 - Intermittent Stream
 - Perennial Stream
 - Pond
 - PEM
 - PFO
 - PSS



**Workspace Changes for the Sunoco
Pennsylvania Pipeline Project,
Delaware County, PA.
46 of 47**

Prepared By: TETRA TECH	Date: 10/2016
----------------------------	-------------------------

Base Map: Sunoco, 2013-2016
Roads: ESRI World Imagery Transportation
Coordinate System: NAD 83 Stateplane, PA South, Feet

B:\P\GIS\PROJECTS\122005656-PPP\MAPS\PERMITS\COUNTY\PERMITS\STD...RESPONSE\ADDSUBMAPS\DELEWARECOUNTY\ADDITION...SUBTRACTION\NR\MAPD 11/10/2016 JL



Legend

- Added Workspace
- Removed Workspace
- Proposed 20-inch Pipeline
- Proposed 16-inch Pipeline
- Bore Path
- PPP 1 HDD
- PPP 2 HDD
- Permanent ROW
- Temporary Workspace
- Additional Temporary Workspace or ATWS
- Block Valve Setting LOD
- Permanent Access Road
- Temporary Access Road
- Travel LOD
- Travel and Clearing LOD
- Station
- Ephemeral Stream
- Intermittent Stream
- Perennial Stream
- Pond
- PEM
- PFO
- PSS

1
47
Chester
Delaware
Gloucester

N

0 50 100 200

1 inch = 100 feet

**Workspace Changes for the Sunoco
Pennsylvania Pipeline Project,
Delaware County, PA.
47 of 47**

Prepared By: 	Date: 10/2016
------------------	-------------------------

Base Map: Sunoco, 2013-2016
 Roads: ESRI World Imagery Transportation
 Coordinate System: NAD 83 Stateplane, PA South, Feet

B:\P\GIS\PROJECTS\1122069666-PPP\MAPS\PERMIT\STANDARD\RESPONSE\ADDSUBMAPS\DELEWARECOUNTY\ADDITION\SUBTRACTION\MAPD_11/10/2016_JL