

SPLP has had revisions to the proposed workspaces in Washington County since submittal of the Chapter 105 and 102 Permit Applications in March 2016. These revisions have been the result of landowner requests, agency requests, the avoidance of sensitive species or their habitats, and/or to further reduce impacts to aquatic resources. The additions and subtractions to the workspaces are listed and quantified within Table 1. In addition, this attachment highlights the location and extent of these additions and subtractions to the workspaces on a set of site plans. Each addition/subtraction has been assigned an identification code and that code is reflected below and on the set of site plans. The additions and subtractions are listed from west to east. A total of approximately 0.7171 acres was added and 1.1875 acres subtracted for a net decrease of 0.4704 acres of earth disturbance.

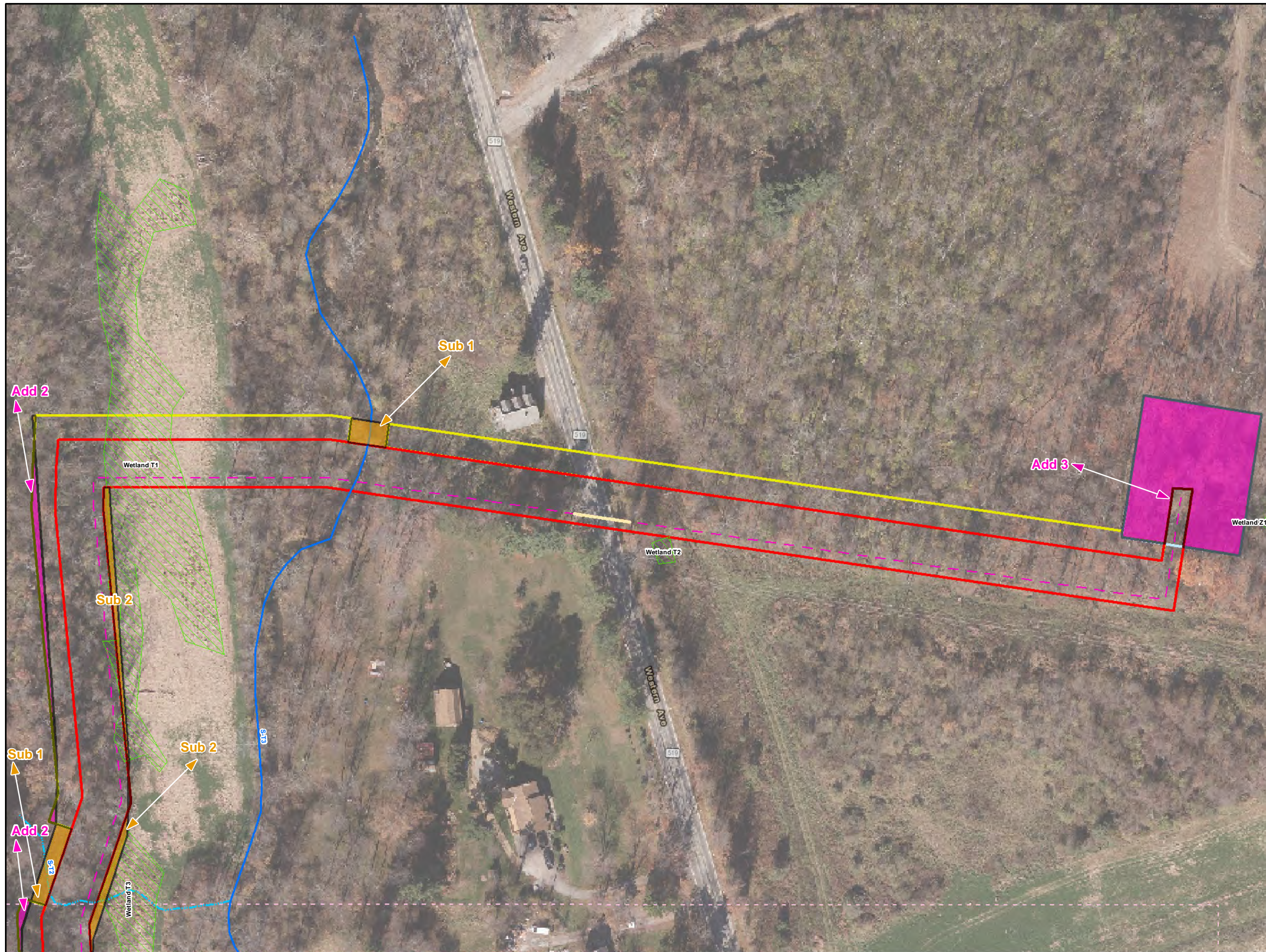
Table 1. Pennsylvania Pipeline Project LOD Additions and Subtractions.

| CHANGE ID | COUNTY | REASON FOR CHANGE | ACREAGE | LOD ADDITION OR SUBTRACTION | WETLAND DELINEATION¹ | PNDI EVALUATION² | SHEET NUMBER |
|---------------------------|---------------|---|----------------|------------------------------------|--|------------------------------------|---------------------|
| Houston Injection Station | WASHINGTON | Station design | 0.0077 | Subtraction | NA | NA | 4 |
| Houston Injection Station | WASHINGTON | Station design | 0.0017 | Addition | Yes | Yes | 4 |
| Add-1 | WASHINGTON | Minor LOD adjustment to facilitate safe installation. | 0.0220 | Addition | Yes | Yes | 4 |
| Add-2 | WASHINGTON | Minor LOD adjustment to facilitate safe installation. | 0.1469 | Addition | Yes | Yes | 1 |
| Sub-1 | WASHINGTON | LOD adjustment to minimize aquatic resource impact. | 0.0914 | Subtraction | NA | NA | 1 |
| Sub-2 | WASHINGTON | LOD adjustment to minimize aquatic resource impact. | 0.1476 | Subtraction | NA | NA | 1 |
| Add-3 | WASHINGTON | Additional temporary workspace to facilitate safe installation. | 0.4026 | Addition | Yes | Yes | 2 |
| Sub-3 | WASHINGTON | Temporary workspace no longer needed in this area. | 0.7398 | Subtraction | NA | NA | 35 |
| Add-4 | WASHINGTON | Temporary access road to avoid travel through residential area. | 0.1072 | Addition | Yes | Yes | 37 |

| CHANGE ID | COUNTY | REASON FOR CHANGE | ACREAGE | LOD ADDITION OR SUBTRACTION | WETLAND DELINEATION¹ | PNDI EVALUATION² | SHEET NUMBER |
|------------------|---------------|---|----------------|------------------------------------|--|------------------------------------|---------------------|
| Sub-4 | WASHINGTON | Travel / Clearing LOD reduction | 0.1756 | Subtraction | NA | NA | 38 |
| Sub-5 | WASHINGTON | Travel / Clearing LOD reduction | 0.0254 | Subtraction | NA | NA | 39 |
| Add-5 | WASHINGTON | Minor LOD adjustment to facilitate safe installation. | 0.0367 | Addition | Yes | Yes | 73 |

1 – The added area was field investigated for aquatic resources. Not applicable is listed for LOD subtractions.

2 – The added area was originally evaluated for PNDI. Not applicable is listed for LOD subtractions.



Legend

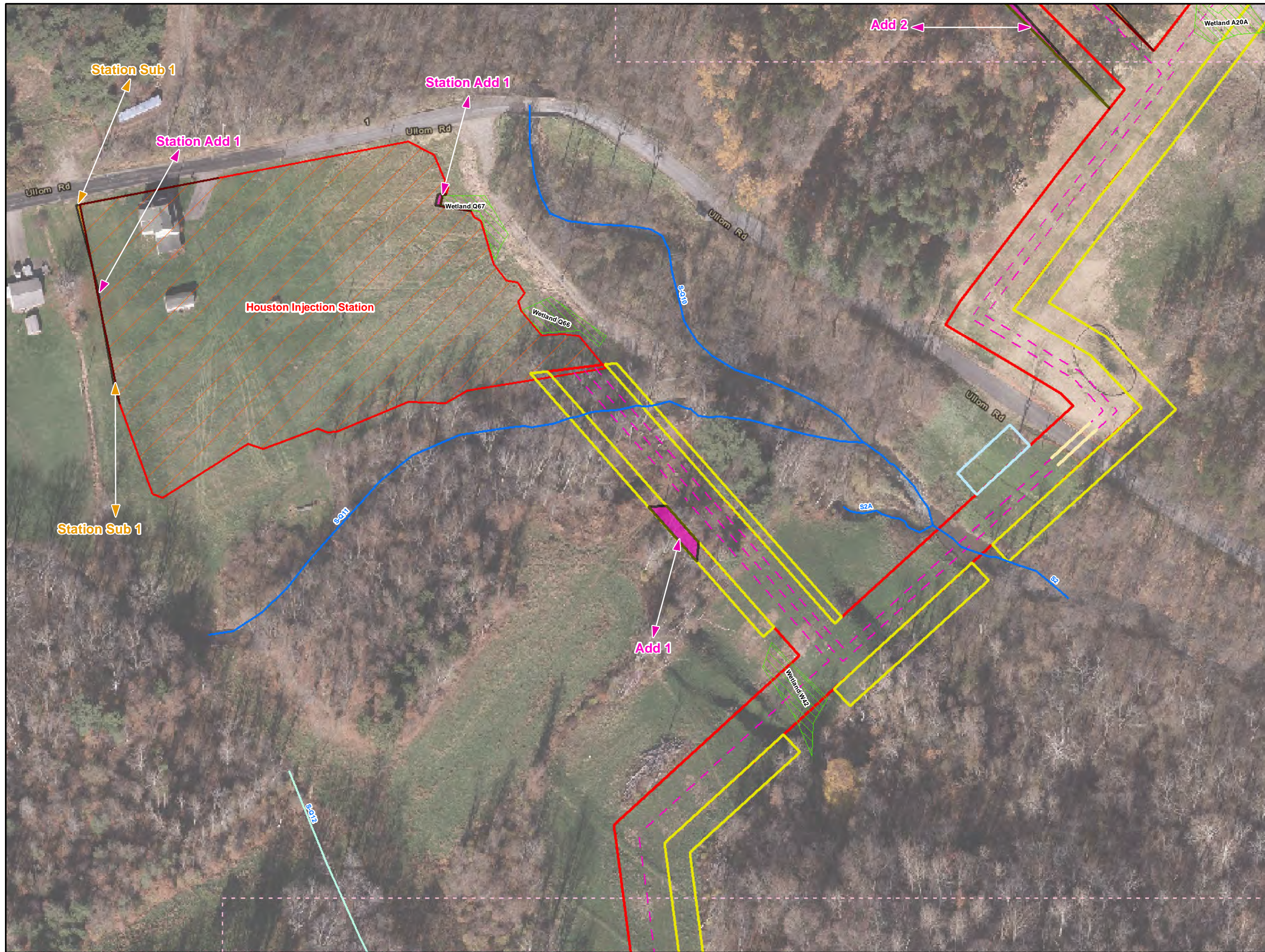
- Added Workspace
- Removed Workspace
- Proposed 20-inch Pipeline
- Proposed 16-inch Pipeline
- Bore Path
- PPP 1 HDD
- PPP 2 HDD
- Permanent ROW
- Temporary Workspace
- Additional Temporary Workspace or ATWS
- Block Valve Setting LOD
- Permanent Access Road
- Temporary Access Road
- Travel LOD
- Travel and Clearing LOD
- Station
- Ephemeral Stream
- Intermittent Stream
- Perennial Stream
- Pond
- PEM
- PFO
- PSS

1 inch = 100 feet

Workspace Changes for the Sunoco Pennsylvania Pipeline Project, Washington County, PA.
2 of 80

| | |
|------------------|-------------------------|
| Prepared By: | Date: 10/2016 |
|------------------|-------------------------|

Base Map: Sunoco, 2013-2016
 Roads: ESRI World Imagery Transportation
 Coordinate System: NAD 83 Stateplane, PA South, Feet



Legend

- Added Workspace
- Removed Workspace
- Proposed 20-inch Pipeline
- Proposed 16-inch Pipeline
- Bore Path
- PPP 1 HDD
- PPP 2 HDD
- Permanent ROW
- Temporary Workspace
- Additional Temporary Workspace or ATWS
- Block Valve Setting LOD
- Permanent Access Road
- Temporary Access Road
- Travel LOD
- Travel and Clearing LOD
- Station
- Ephemeral Stream
- Intermittent Stream
- Perennial Stream
- Pond
- PEM
- PFO
- PSS

1 inch = 100 feet

Workspace Changes for the Sunoco Pennsylvania Pipeline Project, Washington County, PA.
4 of 80

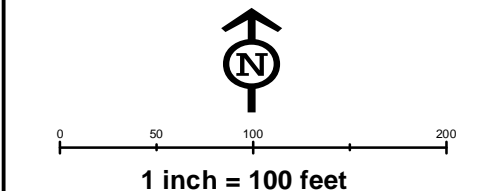
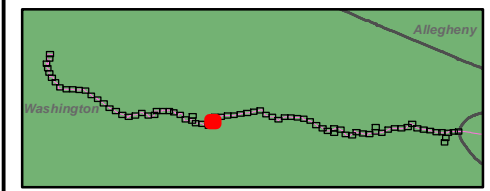
| | |
|------------------|-------------------------|
| Prepared By: | Date: 10/2016 |
|------------------|-------------------------|

Base Map: Sunoco, 2013-2016
 Roads: ESRI World Imagery Transportation
 Coordinate System: NAD 83 Stateplane, PA South, Feet

C:\GIS\PROJECTS\1122069566-PPP\MAPS\SUBMAPS\WASHINGTONCOUNTY\ADDITION_SUBTRACTION\MXD_11/10/2016_JL



- Legend**
- Added Workspace
 - Removed Workspace
 - Proposed 20-inch Pipeline
 - Proposed 16-inch Pipeline
 - Bore Path
 - PPP 1 HDD
 - PPP 2 HDD
 - Permanent ROW
 - Temporary Workspace
 - Additional Temporary Workspace or ATWS
 - Block Valve Setting LOD
 - Permanent Access Road
 - Temporary Access Road
 - Travel LOD
 - Travel and Clearing LOD
 - Station
 - Ephemeral Stream
 - Intermittent Stream
 - Perennial Stream
 - Pond
 - PEM
 - PFO
 - PSS



**Workspace Changes for the Sunoco
Pennsylvania Pipeline Project,
Washington County, PA.
35 of 80**

| | |
|-------------------------|--------------------------------|
| Prepared By: | Date: 10/2016 |
|-------------------------|--------------------------------|

Base Map: Sunoco, 2013-2016
 Roads: ESRI World Imagery Transportation
 Coordinate System: NAD 83 Stateplane, PA South, Feet

BUFP\GIS\PROJECTS\122005956-PPP\MAPS\PERMITS\STANDARD\SUBTRACT\ADD\WASHCOUNTY\ADDITION_SUBTRACT\NAD11\10/2016.JL



Legend

- Added Workspace
- Removed Workspace
- Proposed 20-inch Pipeline
- Proposed 16-inch Pipeline
- Bore Path
- PPP 1 HDD
- PPP 2 HDD
- Permanent ROW
- Temporary Workspace
- Additional Temporary Workspace or ATWS
- Block Valve Setting LOD
- Permanent Access Road
- Temporary Access Road
- Travel LOD
- Travel and Clearing LOD
- Station
- Ephemeral Stream
- Intermittent Stream
- Perennial Stream
- Pond
- PEM
- PFO
- PSS

1 inch = 100 feet

Workspace Changes for the Sunoco Pennsylvania Pipeline Project, Washington County, PA.
36 of 80

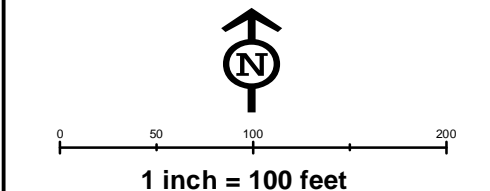
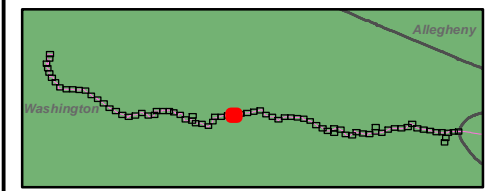
| | |
|------------------|-------------------------|
| Prepared By: | Date: 10/2016 |
|------------------|-------------------------|

Base Map: Sunoco, 2013-2016
 Roads: ESRI World Imagery Transportation
 Coordinate System: NAD 83 Stateplane, PA South, Feet

BUFP:GIS\PROJECTS\122005656-PPP\MAPS\PERMITS\STANDARD\PERMITS\WASHINGTONCOUNTY\ADDITION_SUBTRACTION.MXD 11/10/2016 JL



- Legend**
- Added Workspace
 - Removed Workspace
 - Proposed 20-inch Pipeline
 - Proposed 16-inch Pipeline
 - Bore Path
 - PPP 1 HDD
 - PPP 2 HDD
 - Permanent ROW
 - Temporary Workspace
 - Additional Temporary Workspace or ATWS
 - Block Valve Setting LOD
 - Permanent Access Road
 - Temporary Access Road
 - Travel LOD
 - Travel and Clearing LOD
 - Station
 - Ephemeral Stream
 - Intermittent Stream
 - Perennial Stream
 - Pond
 - PEM
 - PFO
 - PSS

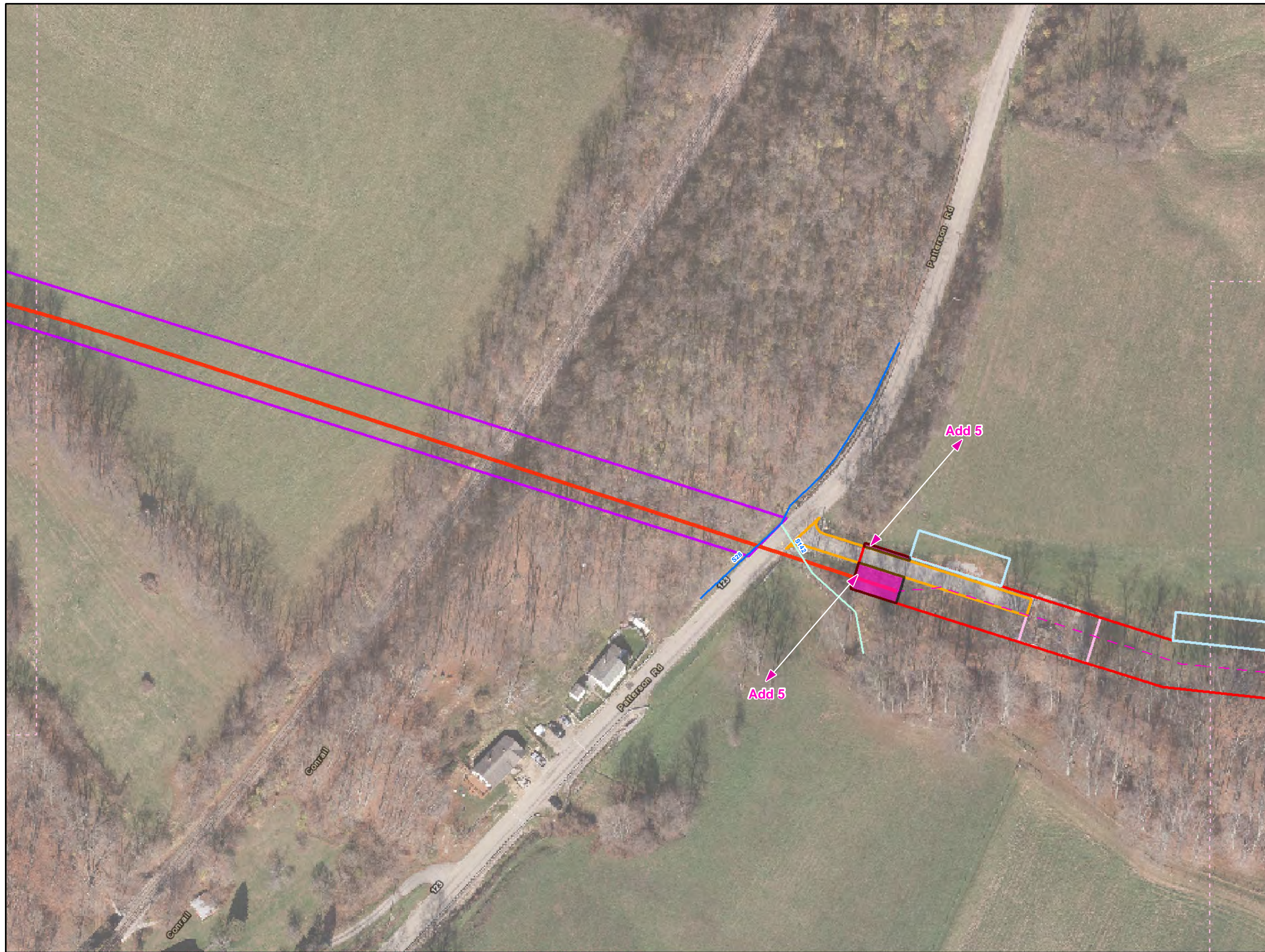


**Workspace Changes for the Sunoco
Pennsylvania Pipeline Project,
Washington County, PA.
39 of 80**

| | |
|------------------|-------------------------|
| Prepared By: | Date: 10/2016 |
|------------------|-------------------------|

Base Map: Sunoco, 2013-2016
 Roads: ESRI World Imagery Transportation
 Coordinate System: NAD 83 Stateplane, PA South, Feet

BUFP:GIS\PROJECTS\12005656-PPP\MAPS\PERMITS\STANDARD\SUBTRACT\WASHTONCOUNTY\ADDITION_SUBTRACT\NAD11\10/2016.JL



Legend

- Added Workspace
- Removed Workspace
- Proposed 20-inch Pipeline
- Proposed 16-inch Pipeline
- Bore Path
- PPP 1 HDD
- PPP 2 HDD
- Permanent ROW
- Temporary Workspace
- Additional Temporary Workspace or ATWS
- Block Valve Setting LOD
- Permanent Access Road
- Temporary Access Road
- Travel LOD
- Travel and Clearing LOD
- Station
- Ephemeral Stream
- Intermittent Stream
- Perennial Stream
- Pond
- PEM
- PFO
- PSS

0 50 100 200

1 inch = 100 feet

Workspace Changes for the Sunoco Pennsylvania Pipeline Project, Washington County, PA.

73 of 80

| | |
|------------------|-------------------------|
| Prepared By: | Date: 10/2016 |
|------------------|-------------------------|

Base Map: Sunoco, 2013-2016
 Roads: ESRI World Imagery Transportation
 Coordinate System: NAD 83 Stateplane, PA South, Feet

BU:\P\GIS\PROJECTS\122005656-PPP\MAPS\PERMITS\STANDARD\SUBTRACT\WASHCOUNTY\ADDITION_SUBTRACT\NAD1983\STATEPLANE\PA_SOUTH\FEET\10/2016.JL