



September 19, 2016

Westmoreland County
Board of Commissioners
Fifth Floor, Suite 520
40 North Pennsylvania Avenue
Greensburg, Pennsylvania 15601

**Reference: Sunoco Pipeline L.P. – Pennsylvania Pipeline Project
Stormwater Management Program Consistency Request**

To Whom It May Concern:

On behalf of Sunoco Pipeline, L.P. (SPLP), Tetra Tech is in the process of providing data to the Pennsylvania Department of Environmental Protection (PADEP), to obtain a Chapter 105 Water Obstruction and Encroachment Permit for the Pennsylvania Pipeline Project (Project). The Project involves the installation of approximately two parallel pipelines within a 306-mile, 50-foot-wide right-of-way (ROW) from Houston, Washington County, Pennsylvania to SPLP's Marcus Hook facility in Delaware County, Pennsylvania with the purpose of interconnecting with existing SPLP Mariner East pipelines. A 20-inch diameter pipeline would be installed within the ROW from Houston to Marcus Hook (306 miles) and a second, up to 20-inch diameter pipeline, will also be installed in the same ROW from SPLP's Delmont Station, Westmoreland County, Pennsylvania to the Marcus Hook facility, paralleling the initial line for approximately 255 miles. Additional aboveground facilities, such as block valves and pump stations will be required to complete the project. The project will require crossing various streams and wetlands in the project area, including direct temporary disturbances to streams and wetlands at installation locations. Once pipeline installation has been completed, trenches will be backfilled with the excavated material, and water/wetland resources will be restored to preconstruction contours and stabilized with native vegetation. Only at aboveground facilities will change in grades occur, with the majority of these facilities located outside of floodways and 100-year floodplains. Overall, the Project will be designed, constructed, and operated in compliance with all applicable provisions of 25 Pennsylvania Code, Chapter 102 Regulations (Erosion and Sediment Control and Post Construction Stormwater Management Best Management Practices including the implementation of Antidegradation Best Available Combination of Technologies (ABACT methods) where applicable, to maintain the designated use of receiving waters in the area and no increase in stormwater runoff, rate or volume would occur.

As part of the permit approval process, we and Sunoco respectfully request your review and a letter confirming the Project's consistency with the County or the local municipality's Storm Water Management program (as applicable). A consistency letter from the County or municipality in regard to the local Storm Water Management Program is required pursuant to the Stormwater Management Act (32 P.S., §§ 680.1—680.17). The Project crosses several municipalities in Westmoreland County including Rostraver, South Huntingdon, Sewickley, Hempfield, Penn, Salem, Loyalhanna, and Derry Townships, the City of Jeanette, and Murrysville Borough. We have received consistency determinations from Rostraver, South Huntingdon, Sewickley, Penn, and Loyalhanna Townships, the City of Jeanette, and Murrysville Borough; however we have not received consistency determinations from Hempfield, Salem, and Derry Townships at time. Ongoing coordination is occurring with Hempfield Township, and no response has been received from Salem or Derry Townships.

Tetra Tech Inc.
301 Ellicott Street, Buffalo, New York 14203
Tel 716.849.9419 Fax 716.849.9420 tetrattech.com



To assist you, a draft of the letter format is enclosed as Attachment A. This draft may be retyped on municipal letterhead, signed and mailed back to Tetra Tech. Alternatively, please print the form below (at the bottom of this letter), provide a signature and return this letter to the letterhead address.

The following attachments are included for your review:

- Location Map which shows the project location with County and Township boundaries (Attachment B).

If you have further questions or require additional information, please do not hesitate to contact me or Rachel Silva at (716) 849-9419 or via email at ailene.batoon@tetrattech.com or rachel.silva@tetrattech.com.

Thank you for your timely response to this matter.

Sincerely,

A handwritten signature in black ink, appearing to read 'Ailene Batoon', written over a horizontal line.

Ailene Batoon
Tetra Tech, Inc.

Enclosures: Draft Consistency Form/Letter, Location Map, Site Map

Westmoreland County
Fifth Floor, Suite 520
40 North Pennsylvania Avenue
Greensburg, Pennsylvania 15601

Ailene Batoon
Tetra Tech, Inc.
301 Ellicott Street
Buffalo, NY 14203

**Reference: Sunoco Pipeline L.P. – Pennsylvania Pipeline Project
Stormwater Management Program Consistency Request**

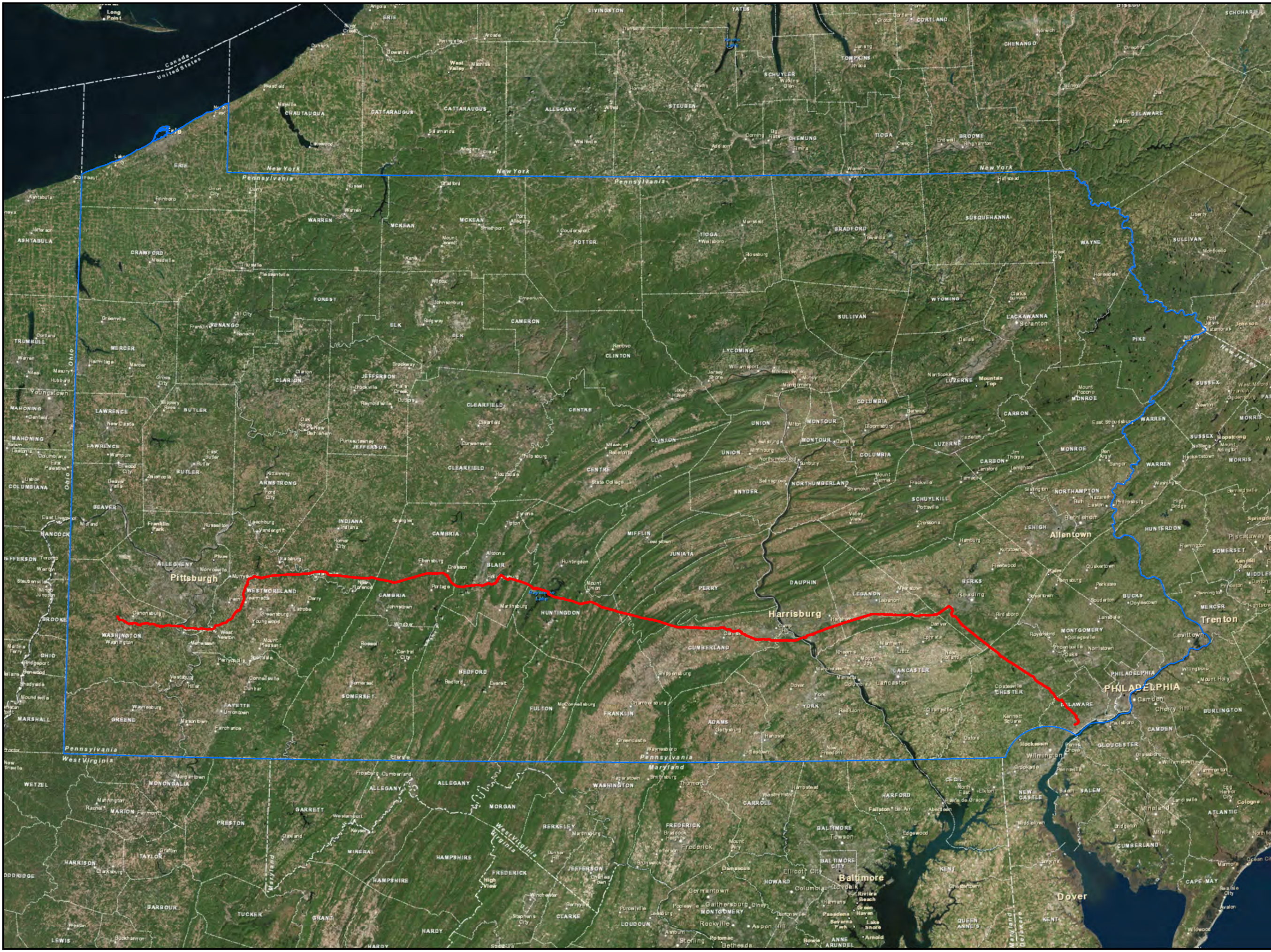
STORMWATER CONSISTENCY:

No Plan **Project is Consistent** **Project is NOT Consistent (Explain Below)**

Municipal Official (signature & title)

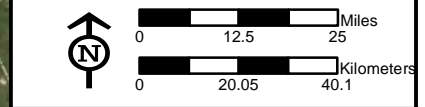
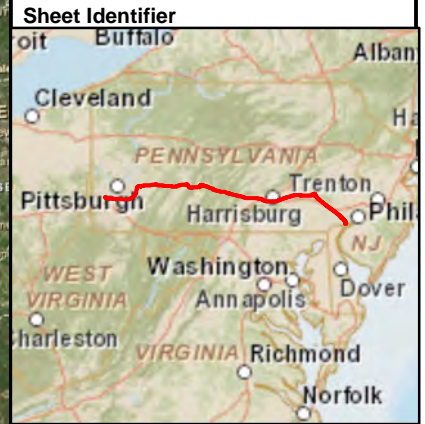
Printed Name

Date



Legend

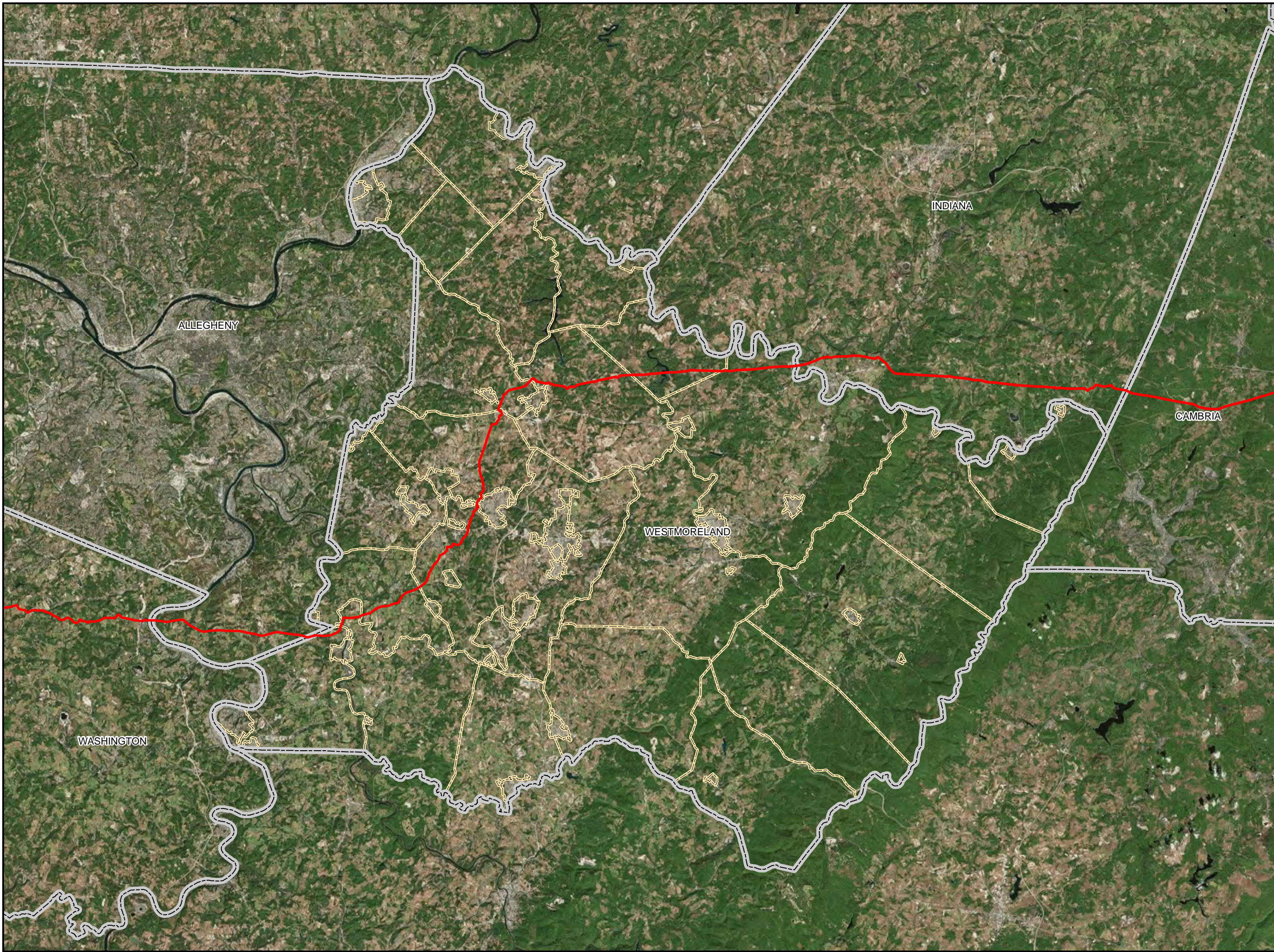
- Alignment Centerline
- Pennsylvania State Border



**PROJECT LOCATION MAP
STATE LEVEL
ATTACHMENT B
PENNSYLVANIA PIPELINE PROJECT
SUNOCO LOGISTICS, L.P.**

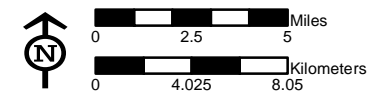
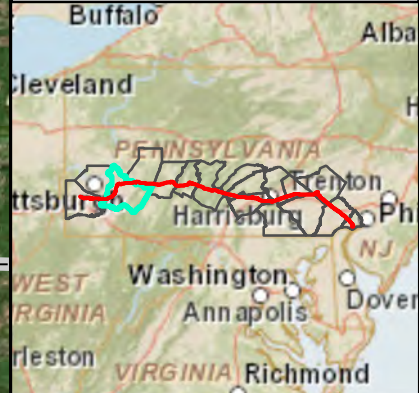


Notes:
Aerial photograph provided by ESRI's ArcGIS Online World Imagery map service (© 2011 ESRI and its data suppliers).



- Legend**
- Alignment Centerline
 - County Boundary
 - Township Boundary

Sheet Identifier



**PROJECT LOCATION MAP
COUNTY LEVEL
ATTACHMENT B
PENNSYLVANIA PIPELINE PROJECT
SUNOCO LOGISTICS, L.P.
WESTMORELAND COUNTY, PA**



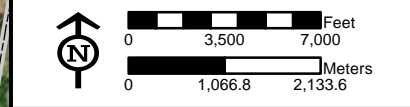
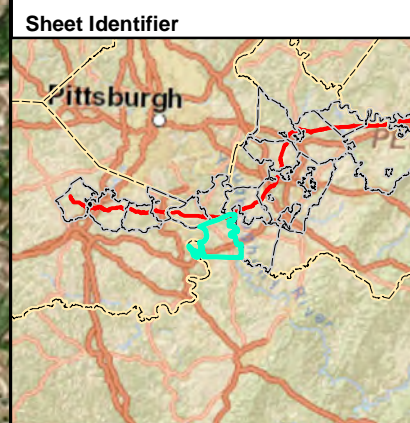
Notes:
Aerial photograph provided by ESRI's
ArcGIS Online World Imagery map service
(© 2011 ESRI and its data suppliers).

PGH_P015UNOCO/MARINER_EAST_2MXDIPPP_ACT14/PAENPIPELINE_ACT14_COUNTIES.MXD 06/08/15_JN



Legend

- Alignment Centerline
- County Boundary
- Township Boundary



**PROJECT LOCATION MAP
ROSTRAVER TOWNSHIP
ATTACHMENT B
PENNSYLVANIA PIPELINE PROJECT
SUNOCO LOGISTICS, L.P.
WESTMORELAND COUNTY, PA**



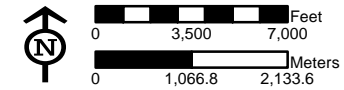
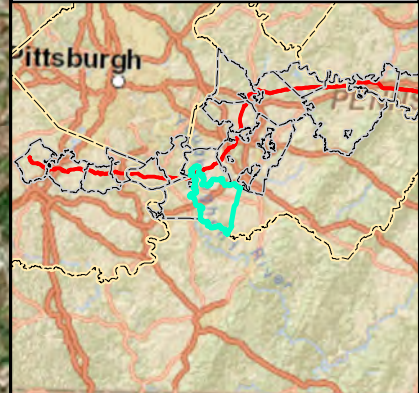
Notes:
Aerial photograph provided by ESRI's
ArcGIS Online World Imagery map service
(© 2011 ESRI and its data suppliers).

PGH_P:\GIS\SUNOCO\MARINER_EAST_2\MXD\PPP_ACT\HMPENPIPELINE_ACT14_MUNICIPALITIES.MXD 06/08/15 JN



- Legend**
- Alignment Centerline
 - County Boundary
 - Township Boundary

Sheet Identifier



**PROJECT LOCATION MAP
SOUTH HUNTINGDON TOWNSHIP
ATTACHMENT B
PENNSYLVANIA PIPELINE PROJECT
SUNOCO LOGISTICS, L.P.
WESTMORELAND COUNTY, PA**

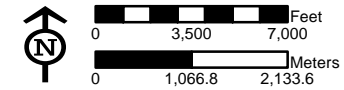
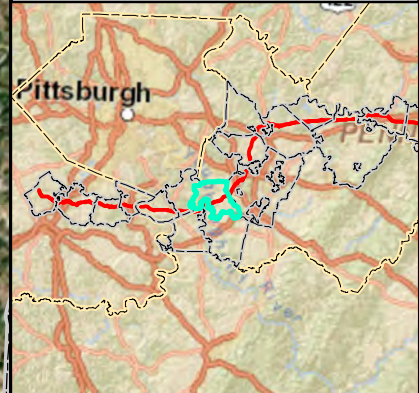


Notes:
Aerial photograph provided by ESRI's
ArcGIS Online World Imagery map service
(© 2011 ESRI and its data suppliers).



- Legend**
- Alignment Centerline
 - County Boundary
 - Township Boundary

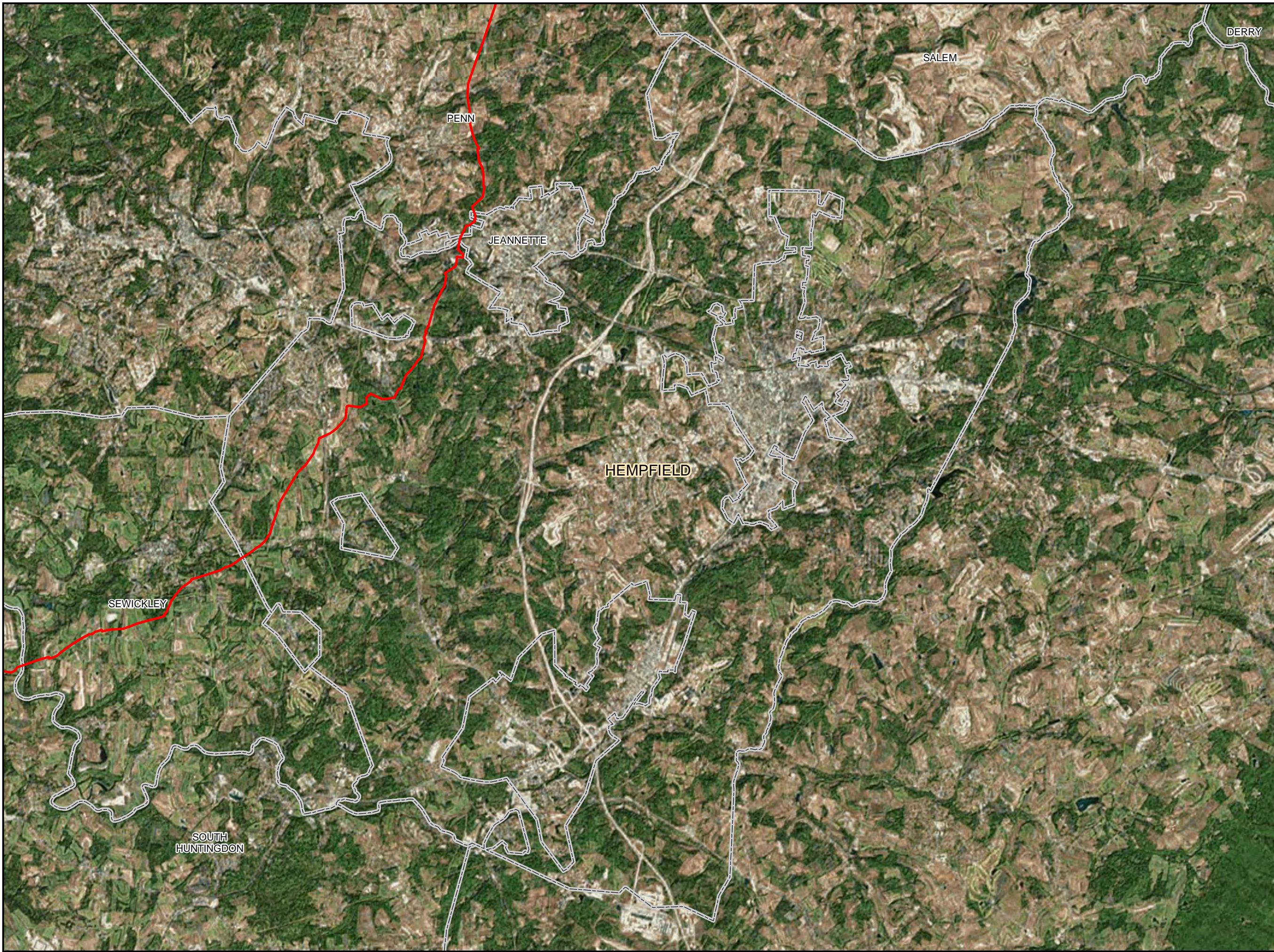
Sheet Identifier



**PROJECT LOCATION MAP
SEWICKLEY TOWNSHIP
ATTACHMENT B
PENNSYLVANIA PIPELINE PROJECT
SUNOCO LOGISTICS, L.P.
WESTMORELAND COUNTY, PA**



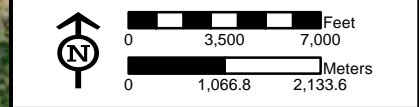
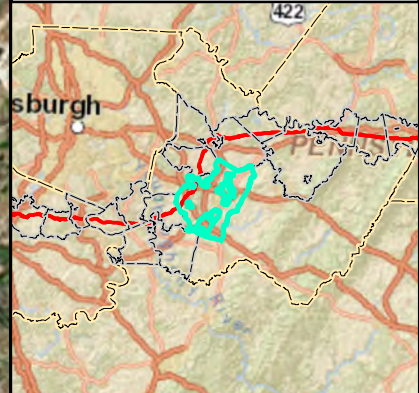
Notes:
Aerial photograph provided by ESRI's
ArcGIS Online World Imagery map service
(© 2011 ESRI and its data suppliers).



Legend

- Alignment Centerline
- County Boundary
- Township Boundary

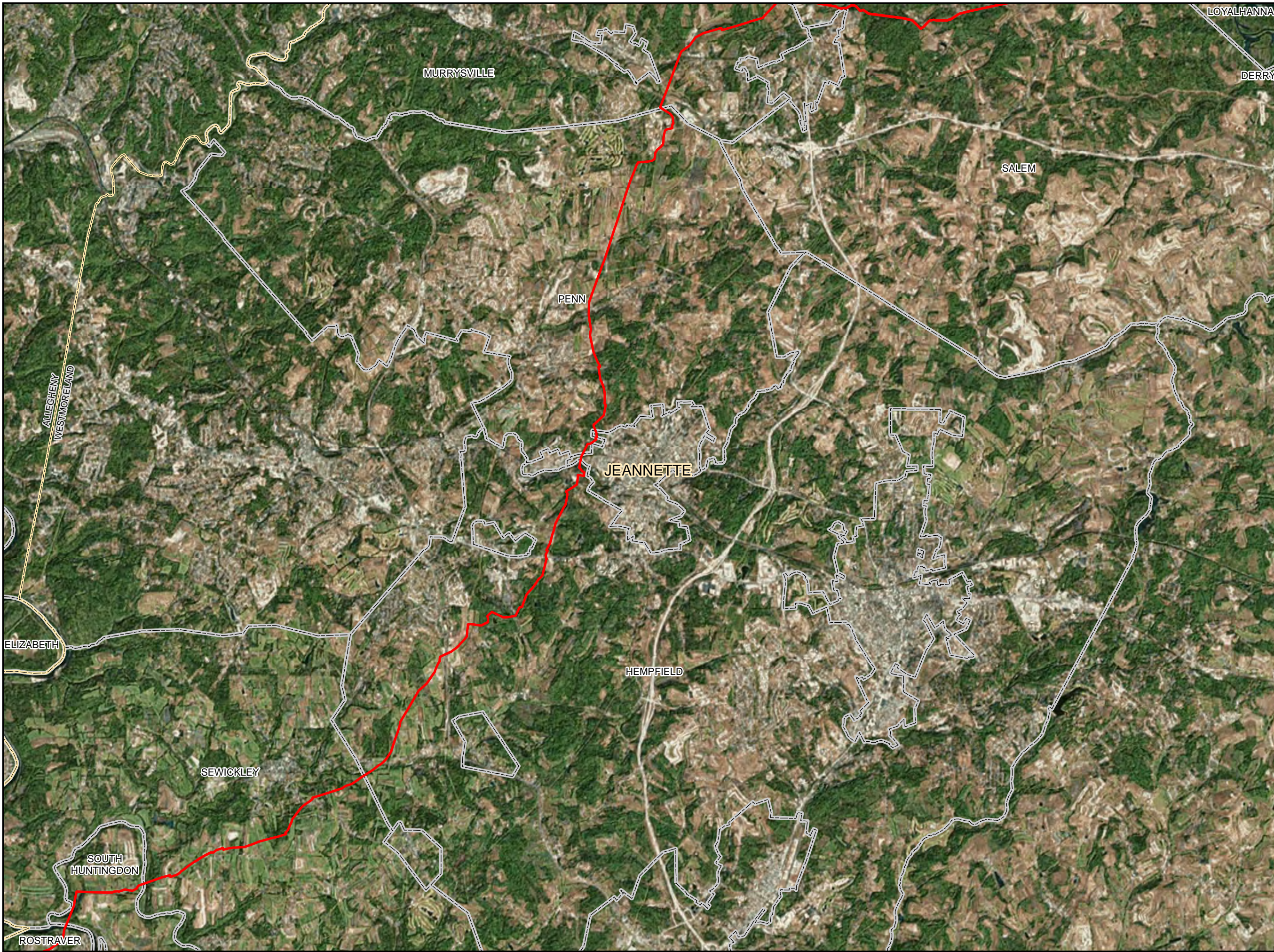
Sheet Identifier



**PROJECT LOCATION MAP
HEMPFIELD TOWNSHIP
ATTACHMENT B
PENNSYLVANIA PIPELINE PROJECT
SUNOCO LOGISTICS, L.P.
WESTMORELAND COUNTY, PA**

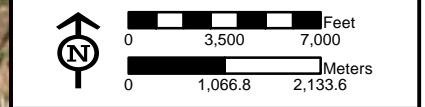
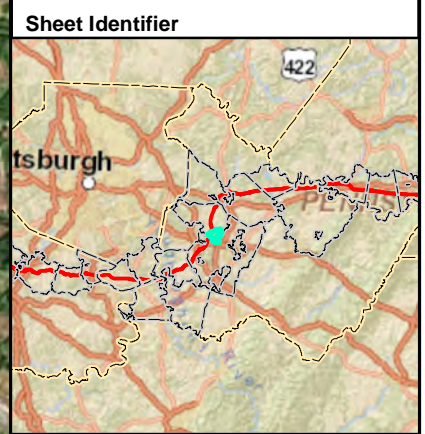


Notes:
Aerial photograph provided by ESRI's
ArcGIS Online World Imagery map service
(© 2011 ESRI and its data suppliers).



Legend

- Alignment Centerline
- County Boundary
- Township Boundary



**PROJECT LOCATION MAP
JEANNETTE TOWNSHIP
ATTACHMENT B
PENNSYLVANIA PIPELINE PROJECT
SUNOCO LOGISTICS, L.P.
WESTMORELAND COUNTY, PA**



Notes:
Aerial photograph provided by ESRI's
ArcGIS Online World Imagery map service
(© 2011 ESRI and its data suppliers).

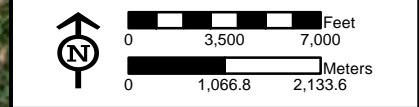
PGH_P015\SUNOCO\MARINER_EAST_2M\XDIPPP_ACT14\MAPEN\PIPELINE_ACT14_MUNICIPALITIES.MXD 06/08/15 JN



Legend

- Alignment Centerline
- County Boundary
- Township Boundary

Sheet Identifier



**PROJECT LOCATION MAP
 PENN TOWNSHIP
 ATTACHMENT B
 PENNSYLVANIA PIPELINE PROJECT
 SUNOCO LOGISTICS, L.P.
 WESTMORELAND COUNTY, PA**



Notes:
 Aerial photograph provided by ESRI's
 ArcGIS Online World Imagery map service
 (© 2011 ESRI and its data suppliers).



- Legend**
- Alignment Centerline
 - County Boundary
 - Township Boundary

ALLEGHENY
WESTMORELAND

MURRYSVILLE

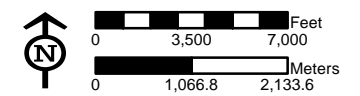
LOYALHANNA

SALEM

PENN

HEMPFIELD

Sheet Identifier

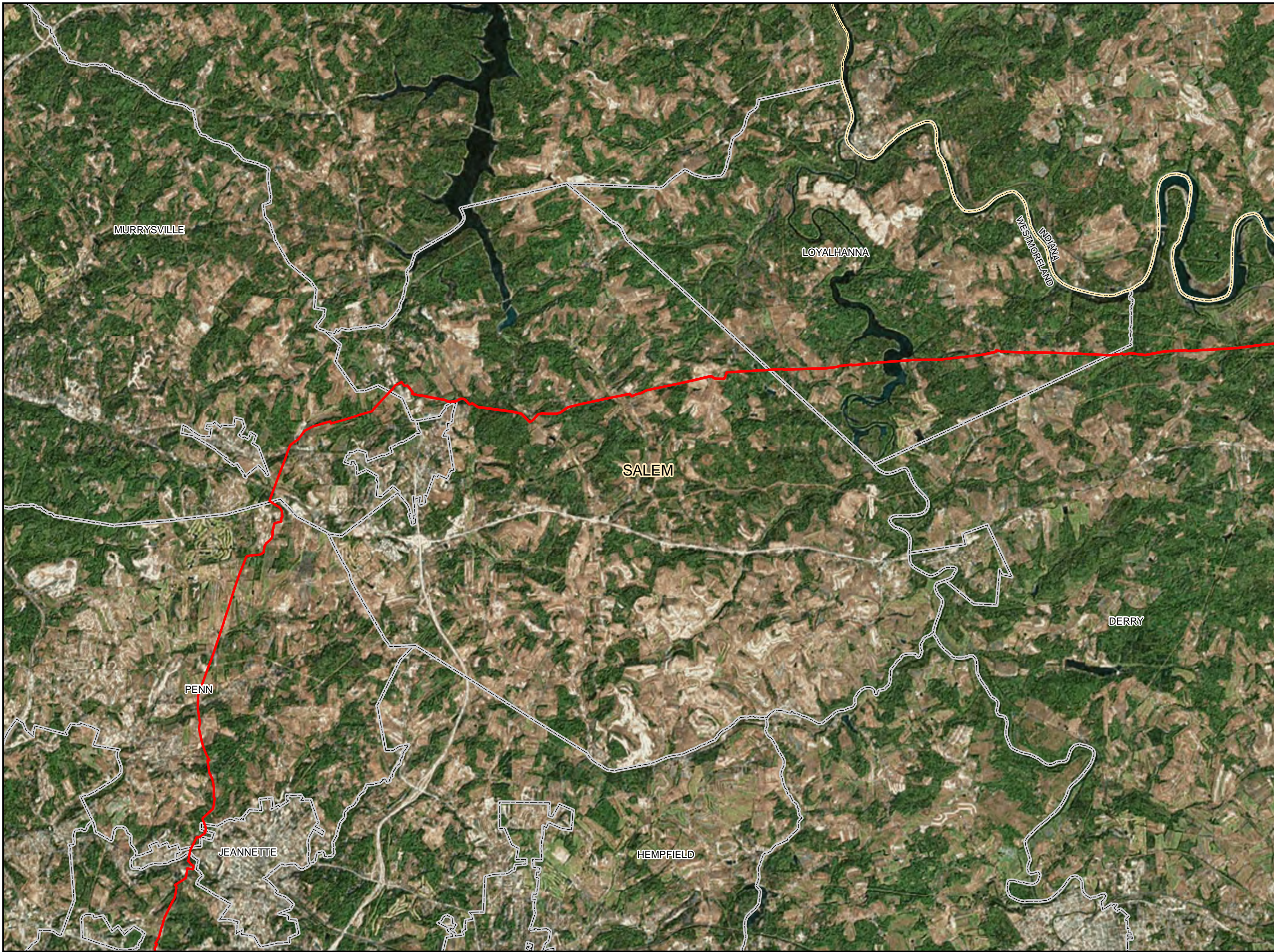


**PROJECT LOCATION MAP
MURRYSVILLE TOWNSHIP
ATTACHMENT B
PENNSYLVANIA PIPELINE PROJECT
SUNOCO LOGISTICS, L.P.
WESTMORELAND COUNTY, PA**



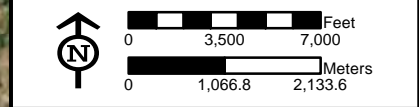
Notes:
Aerial photograph provided by ESRI's
ArcGIS Online World Imagery map service
(© 2011 ESRI and its data suppliers).

PGH_P:\GIS\SUNOCO\MARINER_EAST_2\MXD\PPP_ACT14\MUNICIPALITIES.MXD 06/08/15 JN



- Legend**
- Alignment Centerline
 - County Boundary
 - Township Boundary

Sheet Identifier

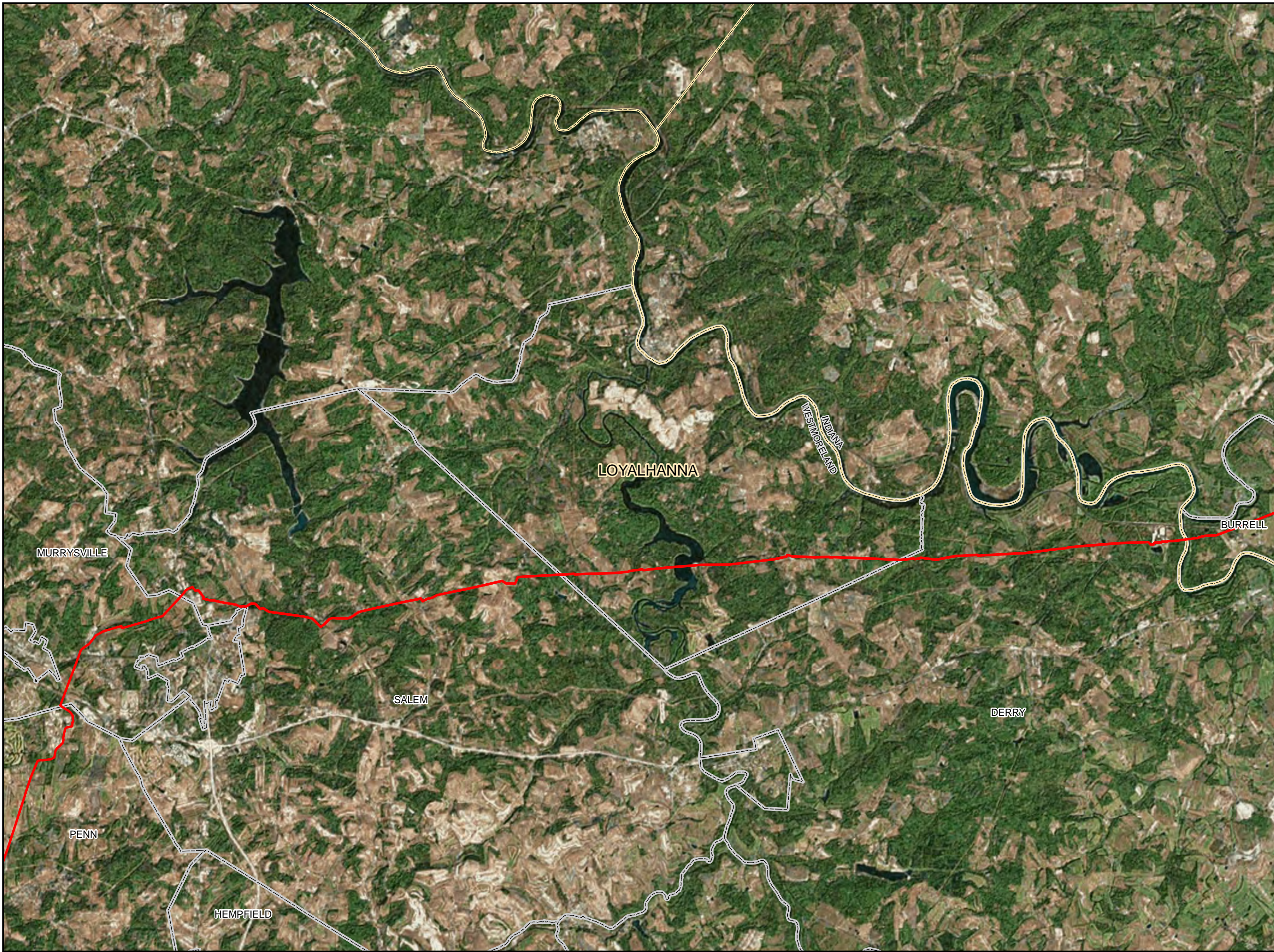


**PROJECT LOCATION MAP
SALEM TOWNSHIP
ATTACHMENT B
PENNSYLVANIA PIPELINE PROJECT
SUNOCO LOGISTICS, L.P.
WESTMORELAND COUNTY, PA**



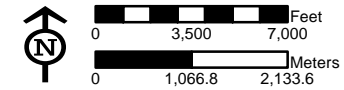
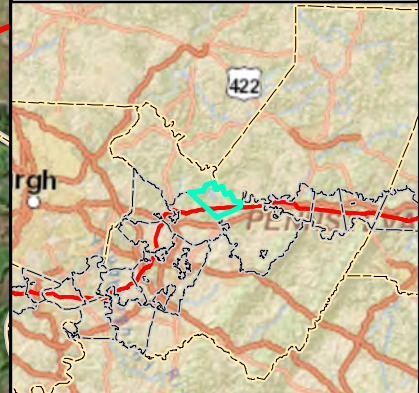
Notes:
Aerial photograph provided by ESRI's
ArcGIS Online World Imagery map service
(© 2011 ESRI and its data suppliers).

PGH_P\GIS\SUNOCO\MARINER_EAST_2MXD\PPP_ACT14\MUNICIPALITIES\MXD_060815_JN



- Legend**
- Alignment Centerline
 - County Boundary
 - Township Boundary

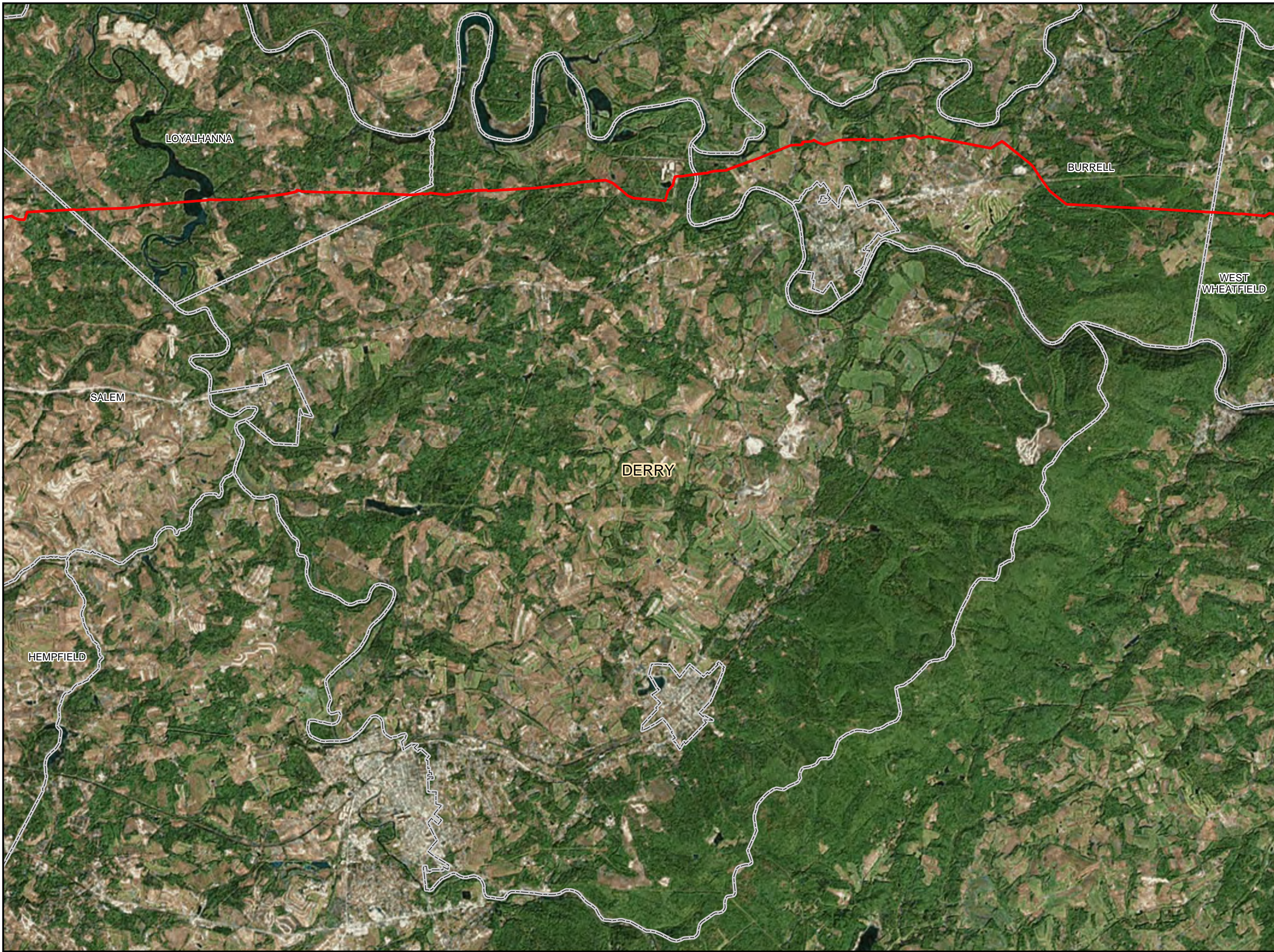
Sheet Identifier



**PROJECT LOCATION MAP
LOYALHANNA TOWNSHIP
ATTACHMENT B
PENNSYLVANIA PIPELINE PROJECT
SUNOCO LOGISTICS, L.P.
WESTMORELAND COUNTY, PA**

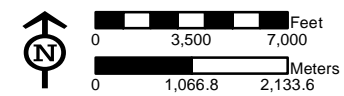
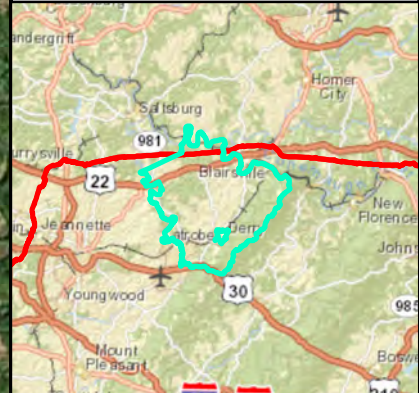


Notes:
Aerial photograph provided by ESRI's
ArcGIS Online World Imagery map service
(© 2011 ESRI and its data suppliers).



- Legend**
- Alignment Centerline
 - County Boundary
 - Township Boundary

Sheet Identifier



**PROJECT LOCATION MAP
DERRY TOWNSHIP
ATTACHMENT B
PENNSYLVANIA PIPELINE PROJECT
SUNOCO LOGISTICS, L.P.
WESTMORELAND COUNTY, PA**



Notes:
Aerial photograph provided by ESRI's
ArcGIS Online World Imagery map service
(© 2011 ESRI and its data suppliers).


PGH_P\GIS\UNOCOMARINER_EAST_2\MXD\PPP_ACT14PENPIPELINE_ACT14_MUNICIPALITIES.MXD 12/03/16 JN

Batoon, Ailene

From: trackingupdates@fedex.com
Sent: Tuesday, September 20, 2016 9:54 AM
To: Batoon, Ailene
Subject: FedEx Shipment 777260059301 Delivered

Your package has been delivered

Tracking # 777260059301

Ship date: Mon, 9/19/2016	Delivery date: Tue, 9/20/2016 9:50 am	
AILENE BATOON TETRA TECH - HOME Buffalo, NY 14203 US	 Delivered	Board of Commissioners Westmoreland County 40 North Pennsylvania Avenue Fifth Floor, Suite 520 GREENSBURG, PA 15601 US

Shipment Facts

Our records indicate that the following package has been delivered.

Tracking number:	777260059301
Status:	Delivered: 09/20/2016 09:50 AM Signed for By: J.FOSTER
Reference:	112IC05958, 16
Signed for by:	J.FOSTER
Delivery location:	GREENSBURG, PA
Delivered to:	Receptionist/Front Desk
Service type:	FedEx Priority Overnight
Packaging type:	FedEx Envelope
Number of pieces:	1
Weight:	0.50 lb.
Special handling/Services:	Direct Signature Required Deliver Weekday
Standard transit:	9/20/2016 by 10:30 am

