

SUBMERGED LAND LICENSE AGREEMENT SUBMITTALS

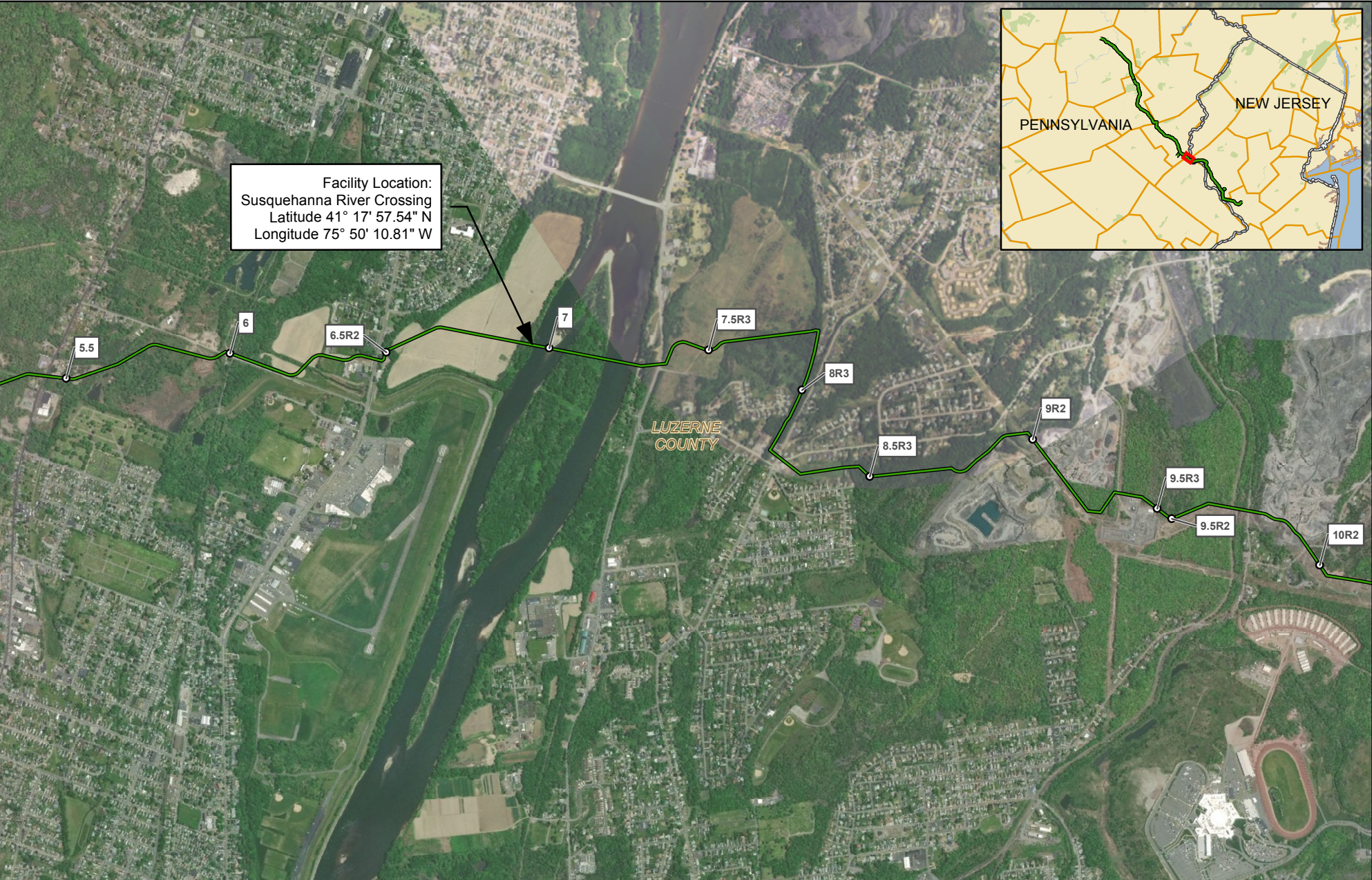
1. **JPA #** : E13-185
2. **Legal Name of Client**: - PennEast Pipeline Company LLC
State of Incorporation - PA
3. **Principal place of business** – 1 Meridian Boulevard Suite 2C01 Wyomissing, PA 19610
Employer ID# - 47-1573364
4. **Client’s contact person & contact info.**– UGI Energy Services – Amber Holly – 610-373-7999 x 1172; aholly@ugies.com
5. **Consultant’s name & contact info** – AECOM – Sarah Binckley – 610-832-2713; sarah.binckley@aecom.com
6. **This IS NOT in conjunction with a PennDOT Project.**
7. **County (Counties) and Municipality (ties) projects, encroachments or crossings are located in.**

Wyoming Borough and Jenkins Township, Luzerne County
8. **Agreement type – Commercial**
9. **Locational Mapping of the Facilities** showing the **“FACILITIES AREA”** tagged on the map, with **Coordinates Example Lats & Longs: latitude 39° 53’ 45.34” N, longitude -80° 13’ 1.14” W”** **PLEASE ATTACH MAP WITH TEXT BOX TAGGED WITH INFORMATION AS STATE ABOVE- COLOR MAPS ARE ACCEPTABLE & PREFERRED, Monochromatic is accepted.** See attached USGS map.
10. **Project drawing** with dimensions L x W = total sq.ft =0.1 acres, (commercial) or linear ft (public service line)

SHOWING PROJECT AREA (outlined) WITH LENGTH & WIDTH = TOTAL SQ. FT FOR TOTAL TENTH OF ACRES OR TOTAL LINEAR FEET. ATTACH DRAWING WITH INSERT TEXT BOX TAGGED AS STATE ABOVE- COLOR DRAWINGS ARE ACCEPTABLE & PREFERRED, Monochromatic is accepted. See attached Project drawing.
11. **Description** – To install and maintain a 36-inch diameter natural gas pipeline to transport natural gas from Luzerne County, Pennsylvania to Mercer County, New Jersey. A dry, open cut crossing method will be used to cross under the Susquehanna River (Latitude 41.301427°N, Longitude -75.839206°W), in Wyoming Borough and Jenkins Township, Luzerne County.
12. **Please send (EMAIL) SLLA-Submittal to** RA-105-SLLA@pa.gov EP,105-SLLA and vmarx@pa.gov **in the To... line, Include attachments of Map, Facilities drawing/plans with email, (this sheet can be an attachment or body of email) N/A.** Provided to the PADEP Northeast Regional Office as part of the PennEast Pipeline Project Joint Permit Application for Luzerne County.

Attachment 1
SLLA Location Map: Susquehanna River Crossing

G:\PennEast\353754_PennEast_Pipeline_EPC\MapDataProd\FC\Work\GIS\MKD\PENNEAST_USGS_QUADRANT_PADEP_MAPBOOK_85x11\2018_12_07\PENNEAST_AERIAL_IMAGERY_PADEP_MAPBOOK_85x11.mxd



- 1 MILE POST STATION EQUATIONS
- PROPOSED PENNEAST PIPELINE CENTERLINE
- COUNTY BOUNDARY
- STATE BOUNDARY

PENNEAST PIPELINE PROJECT
AERIAL IMAGERY MAP
 LUZERNE COUNTY
 PENNSYLVANIA



ABSOLUTE SCALE:
1:24,000

 REFERENCE SCALE:
1 IN = 2,000 FT

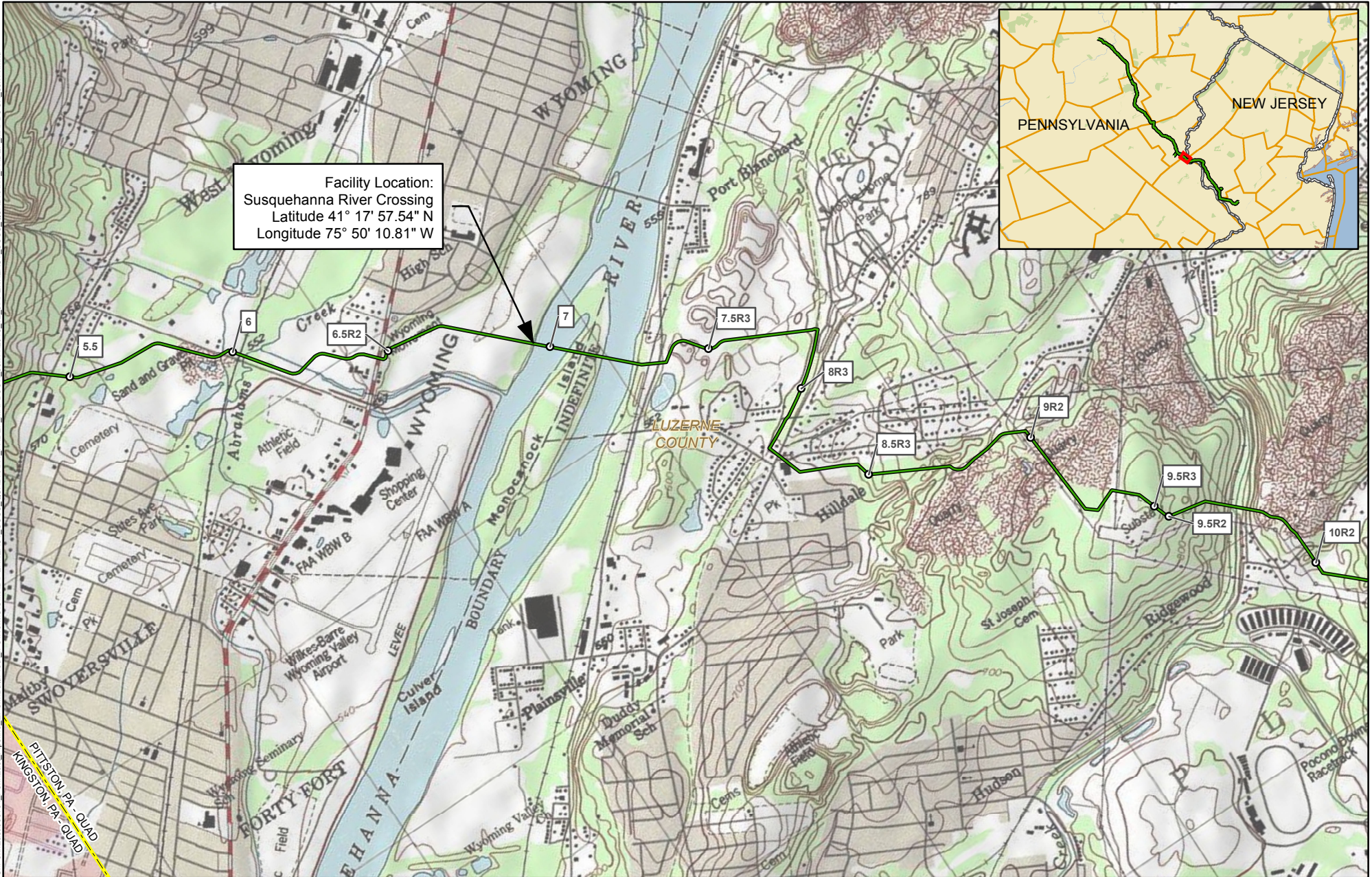


M
 MOTT
 MACDONALD

DRAWN BY:	SNP 12/2018
CHECKED BY:	KEK 12/2018
APPROVED BY:	MJD 12/2018
REV. DATE:	12/2018
REVISION:	3
DESC:	PADEP FILING
PAGE:	1 OF 1

12072018-8511-CVE-000

G:\PennEast\353754_PennEast_Pipeline_EPC\MapDataProd\FC\Work\GIS\KDPENNEAST_USGS_QUADRANT_PADEP_MAPBOOK_85x11.mxd
12072018-8511-CVE-000



Facility Location:
Susquehanna River Crossing
Latitude 41° 17' 57.54" N
Longitude 75° 50' 10.81" W



- 1 MILE POST STATION EQUATIONS
- PROPOSED PENNEAST PIPELINE CENTERLINE
- COUNTY BOUNDARY
- STATE BOUNDARY
- USGS QUADRANGLE BOUNDARY

PENNEAST PIPELINE PROJECT
USGS QUADRANGLE MAP
LUZERNE COUNTY
PENNSYLVANIA



ABSOLUTE SCALE:
1:24,000

REFERENCE SCALE:
1 IN = 2,000 FT













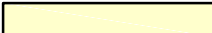




M
MOTT
MACDONALD


DRAWN BY:	SNP 12/2018
CHECKED BY:	KEK 12/2018
APPROVED BY:	MJD 12/2018
REV. DATE:	12/2018
REVISION:	3
DESC:	PADEP FILING
PAGE:	1 OF 1

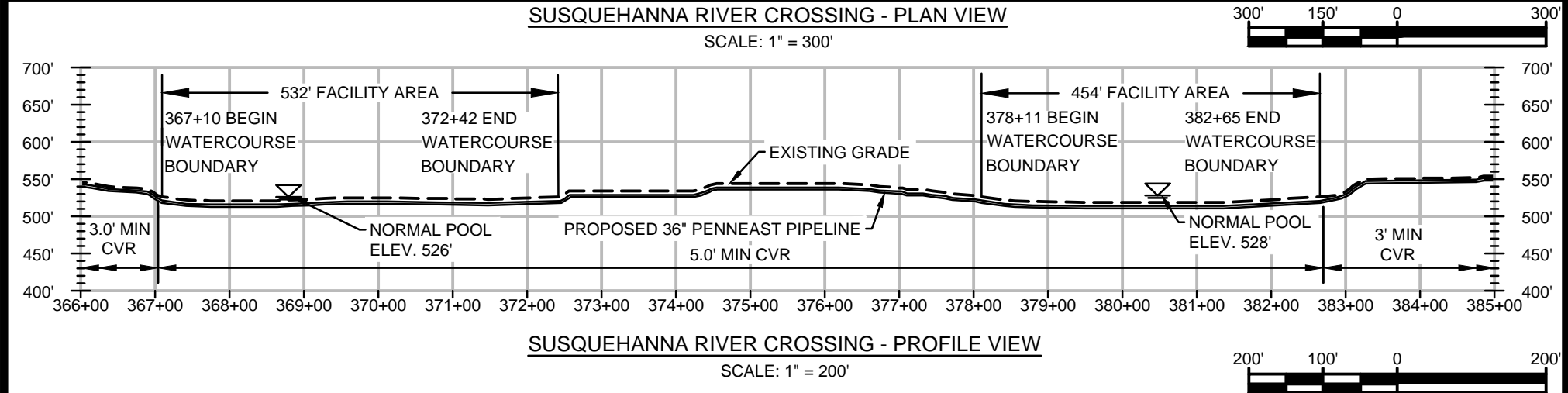
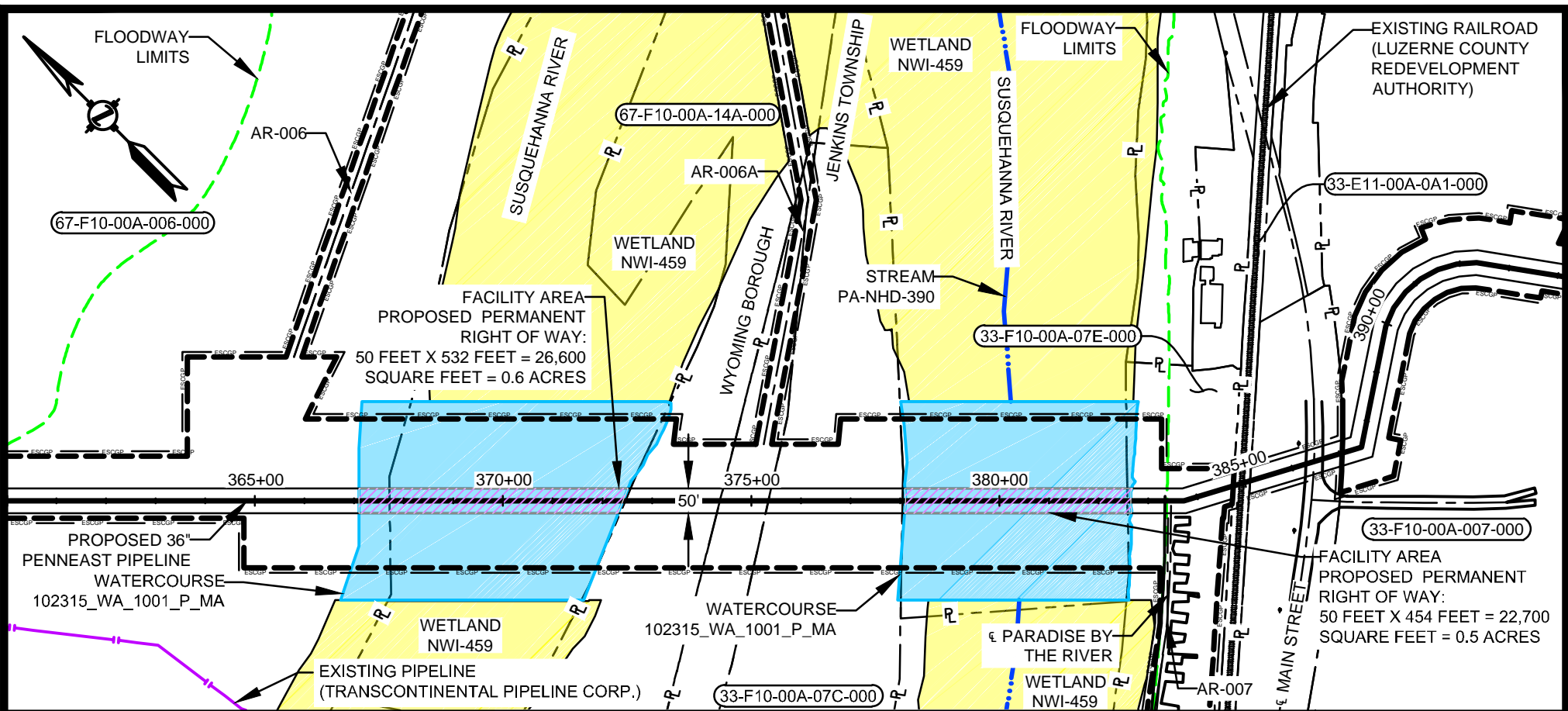
Attachment 2

SLLA Location Site Plan & Profile: Susquehanna River Crossing

LEGEND

	PROPOSED 36" PIPELINE
	PROPOSED PERMANENT EASEMENT
	PROPERTY LINE
	ACCESS ROAD CENTERLINE
	STREAM (DELINEATED)
	STREAM (PUBLIC)
	APPROXIMATE 100-YEAR FLOODWAY
	WATERCOURSE (DELINEATED)
	WATERCOURSE (PUBLIC)
	WETLAND (DELINEATED)
	WETLAND (PUBLIC)
	PERMANENT IMPACT
	LIMITS OF DISTURBANCE BOUNDARY
	ESCGP PERMIT BOUNDARY
	PARCEL TAX ID

REFERENCE DWG. NO.	REFERENCE TITLE	REV. NO.	REV. DESCRIPTION	DATE	PREPARED FOR	PENNEAST PIPELINE PROJECT		
		A	ISSUED FOR PADEP	12/2018		DRAWING NO.	DRAWING TITLE	REVISION
						000-03-06-000.1	WATERBODY SITE SPECIFIC DETAIL	A



REFERENCE DWG. NO.	REFERENCE TITLE	REV. NO.	REV. DESCRIPTION	DATE	PREPARED FOR	PENNEAST PIPELINE PROJECT		
000-03-01-015	ALIGNMENT SHEET	A	ISSUED FOR PADEP	12/2018		DRAWING NO.	DRAWING TITLE	REVISION
WSS-Z-ML-017 & 018	WETLAND & STREAM CROSSING PLAN					000-03-06-001.1	WATERBODY SITE SPECIFIC DETAIL	A