

Construction Spill Prevention and Response Procedures for Oil and Hazardous Materials

03.00.002-OG-A

Revision 03

Effective Date 01/23/2020



Construction Spill Prevention and Response Procedures for Oil and Hazardous Materials

REGIONAL ENERGY ACCESS EXPANSION PROJECT

July 2022

Table of Contents

Abbreviations and Acronyms	3
SECTION 1 - GENERAL INFORMATION	4
1.1. Project Location and Description	4
1.2. Definitions	4
1.3. Contractor Responsibility	7
SECTION 2 - SPILL PLAN REQUIREMENTS.....	7
2.1. Company Construction Spill Plan for Oil and Hazardous Materials.....	7
2.2. U.S. Environmental Protection Agency Tier I Qualified Facility Spill Prevention, Control, and Countermeasure (SPCC) Plan	7
2.3. U.S. Environmental Protection Agency Full SPCC Plan	8
SECTION 3 - DRAINAGE PATTERNS AND SPILL PREVENTION PRACTICES	8
3.1. Drainage Patterns	8
3.2. Spill Prevention Practices.....	8
SECTION 4 - EMERGENCY RESPONSE PROCEDURES.....	10
4.1. Contractor Responsibilities.....	10
4.2. Company Responsibilities	10
4.3. Emergency Contacts	10
4.4. Duties of Chief Inspector or Operations Manager	10
SECTION 5 - EMERGENCY SPILL RESPONSE AND PERSONAL PROTECTIVE EQUIPMENT	11
SECTION 6 - SPILL NOTIFICATION PROCEDURES.....	11
6.1. Internal Notifications.....	11
6.2. External Notifications	11
6.3. Emergency Spill Response Contractors	12
6.4. Local Emergency Responders	12
SECTION 7 – CLEAN-UP PROCEDURES.....	13
7.1. Spills	13
7.2. Equipment Cleaning/Storage.....	13
7.3. Waste Disposal	13
Appendix A.....	14
Table 1: List of Emergency Contacts.....	14
Table 2: Emergency Spill Response and Personal Protective Equipment	15
Appendix B.....	16
Spill/Release Reporting Checklist	16
Appendix C.....
Direct Pipe® Monitoring, Inadvertent Return Response, and Contingency Plan

Abbreviations and Acronyms

CI	Chief Inspector
OM	Operations Manager
dt/day	Dekatherms per day
EC	Emergency Coordinator
LEPC	Local Emergency Planning Committee
Mdt/d	Thousand dekatherms per day
MLV	Mainline valve
MP	Milepost
OD	Outside diameter
PPE	Personal protective equipment
Project	Project Name
SOC	Security Operations Center
SPCC	Spill Prevention Control and Countermeasure
TBD	To be determined

SECTION 1 - GENERAL INFORMATION

1.1. Project Location and Description

Transco, indirectly owned by The Williams Companies, Inc. (Williams), is seeking authorization from the Federal Energy Regulatory Commission (FERC or Commission) under Section 7(c) of the Natural Gas Act and Part 157 of the Commission's regulations, to construct, own, operate, and maintain the proposed Project facilities.

The Project is an expansion of Transco's existing natural gas transmission system that will enable Transco to provide an incremental 829,400 dekatherms per day (Dth/d) of year-round firm transportation capacity from the Marcellus Shale production area in northeastern Pennsylvania (PA) to multiple delivery points along Transco's Leidy Line in PA, Transco's mainline at the Station 210 Zone 6 Pooling Point¹ in Mercer County, New Jersey (NJ) and multiple delivery points in Transco's Zone 6 in NJ, PA, and Maryland (MD). The Project will consist of the following components:

- Approximately 22.2 miles of 30-inch-diameter pipeline partially collocated with Transco's Leidy Line A from milepost (MP) 0.00 to MP 22.32 in Luzerne County, PA (Regional Energy Lateral);
- Approximately 13.8 miles of 42-inch-diameter pipeline collocated with Transco's Leidy Line System from MP 43.72 to MP 57.50 in Monroe County, PA (Effort Loop);
- New electric motor driven compressor station identified as Compressor Station 201 with 9,000 nominal horsepower (HP) in Gloucester County, NJ;
- Addition of two gas-fired turbine driven compressor units with 31,800 nominal HP at International Organization for Standardization (ISO) conditions at existing Compressor Station 505 in Somerset County, NJ, to accommodate the abandonment and replacement of approximately 16,000 HP from eight existing internal combustion engine-driven compressor units and increase the certificated station compression by 15,800 HP;
- Addition of two gas-fired turbine driven compressor units with 63,742 nominal HP at ISO conditions and modification of three existing compressors at existing Compressor Station 515 in Luzerne County, PA to support the Project and to

¹ A pooling point defines the aggregation of gas from multiple physical and/or virtual receipt points to a single physical or virtual point, and the disaggregation of gas from a single physical or virtual point to multiple physical and/or virtual delivery points.

accommodate the abandonment and replacement of approximately 17,000 HP from five existing gas-fired reciprocating engine driven compressors and increase the certificated station compression by 46,742 HP;

- Uprate and rewheel two existing electric motor-driven compressor units at existing Compressor Station 195 in York County, PA to increase the certificated station compression by 6,000 HP and accommodate the abandonment of two existing gas-fired reciprocating engine driven compressors, which total approximately 8,000 HP;
- Modifications at existing Compressor Station 200 in Chester County, PA;
- Uprate one existing electric motor-driven compressor unit at Compressor Station 207 in Middlesex County, NJ to increase the certificated station compression by 4,100 HP;
- Modifications to three (3) existing pipeline tie-ins in PA (Hildebrandt Tie-in, Lower Demunds REL Tie-in, and Carverton Tie-in);
- Addition of regulation controls at an existing valve setting on Transco's Mainline "A" in Bucks County, PA (Mainline A Regulator);
- Modifications at the existing Delaware River Regulator in Northampton County, PA;
- Modifications at the existing Centerville Regulator in Somerset County, NJ;
- Modifications to the existing valves and piping at the Princeton Junction (Station 210 Pooling Point) in Mercer County, NJ;
- Modifications to three (3) existing delivery meter stations in NJ (Camden M&R Station, Lawnside M&R Station, and Mt. Laurel M&R Station);
- Modifications to one (1) existing delivery meter station in MD (Beaver Dam M&R Station);
- Contractual changes (no modifications) at ten (10) existing delivery meter stations in PA and NJ (Algonquin-Centerville Meter Station, Post Road Meter Station, New Village Meter Station, Spruce Run Meter Station, Marcus Hook Meter Station, Ivyland Meter Station, Repaupo Meter Station, Morgan Meter Station, Lower Mud Run Meter Station, and Chesterfield Meter Station);

- Additional ancillary facilities, such as mainline valves (MLVs), cathodic protection, communication facilities, and internal inspection device (e.g., pig) launchers and receivers in PA; and
- Existing, improved, and new access roads and contractor yards/staging areas in PA, NJ, and MD.

Subject to FERC's certification of the Project and receipt of the necessary permits and authorizations, Transco anticipates construction of the Project would commence in second quarter 2023 to meet a proposed in-service date in fourth quarter 2024.

1.2. Definitions:

Oil is defined in the SPCC regulations as oil of any kind or in any form including, but not limited to, petroleum, fuel oil, sludge, oil refuse, and oil mixed with wastes other than dredged spoil and oily mixtures.

Hazardous Material as defined by the DOT includes:

- Hazardous substances, hazardous wastes, marine pollutants, elevated temperature materials, materials designated as hazardous in the Hazardous Materials Table (see 49 CFR 172.101), and materials that meet the defining criteria for hazard classes and divisions in part 173 of subchapter C of this chapter. Hazardous Materials typically found on construction projects include, but are not limited to, petroleum oils, hydraulic fluids, engine coolants (ethylene glycol), x-ray film developer, chemical additives, pipe coatings, used abrasive blasting media, etc. Hazardous Substance is defined in DOT 49 CFR 171.8 and EPA 40 CFR 302.4 and OSHA 29 CFR 1910.120.

Hazardous Materials as specified in contracts means:

- Any substance, materials, and chemicals defined or included in the definition of "hazardous substances," hazardous materials," "toxic substances," "solid wastes," "pollutants," "contaminants," or similar identification, under any Environmental Law.
- Any other chemical, material, or substance, exposure to which is prohibited, limited or regulated by any governmental Authority; or 3) any regulated constituents or substances in concentrations or levels that exceed numeric or risk-based standards established under Environmental Laws.

Hazardous Substance as defined in 49 CFR 171.8 is material, including its mixtures and solutions, that:

- Is listed in the appendix A to §172.101
- Is in a quantity, in one package, which equals or exceeds the reportable quantity (RQ) listed in the appendix A to §172.101 of this subchapter; and
- When in a mixture or solution is in a concentration by weight which equals or exceeds the concentration corresponding to the RQ of the material (except for radionuclides, Under 40 CFR 302.4 (CERCLA), hazardous substances are designated as:
- Listed hazardous substances. The elements and compounds and hazardous wastes appearing in table 302.4 are designated as hazardous substances under section 102(a) of the Act.

- Unlisted hazardous substances. A solid waste, as defined in 40 CFR 261.2, which is not excluded from regulation as a hazardous waste under 40 CFR 261.4(b), is a hazardous substance under section 101(14) of the Act if it exhibits any of the characteristics identified in 40 CFR 261.20 through 261.24.

Under 29 CFR 1910.120, the term "hazardous substance" encompasses those substances defined as hazardous by the U.S. Environmental Protection Agency (EPA) and the U.S. Department of Transportation (DOT).

1.3. Contractor Responsibility:

The Contractor shall be familiar with this Construction Spill Plan and its contents prior to commencing any construction-related activities. The Plan will be followed to prevent any spills that may occur during the project and to mitigate any spills that do occur.

Company representatives assigned to this project include:

Operations Manager (OM):	<i>Insert name here</i>
Chief Inspector (CI):	<i>Insert name here</i>
Environmental Specialist (Permitting):	<i>Insert name here</i>
Environmental Specialist (Compliance):	<i>Insert name here</i>

SECTION 2 - SPILL PLAN REQUIREMENTS

Contractor shall determine the approximate quantities of oil or oil-like substances (including fuels) and any hazardous materials or substances that will be present or stored at the work site(s) to assist Company’s Environmental Inspector in identifying the appropriate spill plan that shall be applicable for the Work. For Section 2.2 and 2.3 the quantities carried by fuel trucks that are on site temporarily to refuel equipment shall not be included in Contractor’s calculation of the amount of oil or oil-like substances stored at any facility/site.

2.1. Company Construction Spill Plan for Oil and Hazardous Materials

If during the course of Work, any amount of oil or oil-like substances or hazardous materials will be present or stored at any facility/site, or any disturbance of a wetlands or waterbody, Contractor shall comply with and complete the remaining sections and requirements of this document (i.e., Construction Spill Plan). Contractor’s field personnel shall be familiar with this plan before initiating any onsite activities and shall follow all requirements and responsibilities of this plan as they are listed for Contractor. Contractor shall provide, prior to start of the Work but no later than the pre-job meeting, all of the initial information required by the applicable/designated plan. Contractor shall provide Company with additional information to keep the plan current.

2.2. U.S. Environmental Protection Agency Tier I Qualified Facility Spill Prevention, Control, and Countermeasure (SPCC) Plan

If during the course of Work, greater than 1,320 gallons of oil or oil-like substances but less than 10,000 gallons with no containers greater than 5,000 gallons in capacity will be present or stored at any facility/site, Contractor shall comply with 2.1 above and complete the remaining sections

and requirements of this document PLUS comply with and complete the requirements of the “U.S. Environmental Protection Agency Tier I Qualified Facility SPCC Plan,” attached to this section, or develop a full SPCC Plan. Contractor’s field personnel shall be familiar with this plan before initiating any onsite activities and shall follow all requirements and responsibilities of this plan as they are listed for Contractor. Contractor shall provide, prior to start of the Work but no later than the pre-job meeting, all of the initial information required by the plan. Contractor shall provide Company with additional information to keep the plan current.

2.3. U.S. Environmental Protection Agency Full SPCC Plan

If during the course of Work, 5,000 gallons or more of oil or oil-like substances contained in a single container, or a total of 10,000 gallons or more, will be present or stored at any facility/site, Contractor shall comply with 2.1 above and complete the remaining section of this document PLUS comply with and complete the requirements of a full U.S. Environmental Protection Agency SPCC Plan, which must be reviewed and approved by a professional engineer. Contractor’s field personnel shall be familiar with this plan before initiating any onsite activities and shall follow all requirements and responsibilities of this plan as they are listed for Contractor. Contractor shall provide, prior to start of the Work but no later than the pre-job meeting, all of the initial information required by the plan. Contractor shall provide Company with additional information to keep the plan current.

SECTION 3 - DRAINAGE PATTERNS AND SPILL PREVENTION PRACTICES

3.1. Drainage Patterns

Drainage patterns across the Project are dendritic or tree shaped. This pattern develops in a variety of structural and lithological environments such as in the mountainous and hilly areas. The evolution of dendritic pattern is guided by the lithological characteristics mainly the permeability of underlying rocks, the amount and regime of rainfall and resultant surface runoff and the time factor. Typically, surface runoff will sheet flow across level surfaces and will infiltrate into soil and to some degree underlying rocks until permeability and lithological characteristics prevent such infiltration at which point surface to groundwater will discharge downslope in the form of seeps or provide base flow to streams. Surface runoff will channelize as slopes increase or topography funnels flow paths at which time energy will increase and accelerated erosion will begin to form dendritic patterns.

Responsibility: Chief Inspector

Construction and Operations personnel will be familiar with drainage patterns for the project and be prepared to implement measures to control any release.

3.2. Spill Prevention Practices

The Contractor shall take the following precautions to ensure that an oil or hazardous materials spill does not occur:

A. Containers/Pumps/Concrete Coating

1. All containers shall be stored on level ground at least 100 feet from any waterway, wetland, or designated municipal watershed area or as prescribed by a project specific permit. All containers should be located within temporary containment.

2. Temporary containment will include, but not be limited to, temporary hay bale berms with plastic sheets underlining the entire contained area. and it is recommended that these areas be inspected daily or after any significant precipitation event.
3. Containment areas shall be capable of containing 110% of the volume of the single largest container of hazardous material being stored plus sufficient freeboard to hold the 25 year/24 hour storm.
4. All container storage areas shall be routinely inspected for integrity purposes. If hazardous wastes are being stored a weekly inspection must be documented.
5. Leaking and/or deteriorated containers shall be replaced as soon as the condition is first detected with clean-up measures immediately taking place.
6. No incompatible materials shall be stored in the same containment area.
7. No container storage areas shall be left unsecured during non-work hours.
8. Accumulated rainwater in the containment areas must be inspected prior to release to the ground; it must be free of sheens or other hazardous materials.
9. Pumps operating within 100 feet of a waterbody or wetland boundary shall utilize the appropriate agricultural or industrial grade containers/materials as a secondary containment system to prevent spills.
10. Concrete coating operations shall not be performed within 100 feet of a wetland or waterbody unless the location is an existing industrial site designated for such use. If no reasonable alternatives exist, consult with the EI and Company Environmental Lead for other options.
11. Secondary containment should be installed around all stationary hydraulic equipment at Trenchless Technology Crossings

B. Tanks

1. The Contractor shall operate only those tanks that meet the requirements and specifications of applicable regulations and that are surrounded with temporary containment as described above.
2. Self-supporting tanks shall be constructed of materials compatible with its contents.
3. All tanks shall be routinely inspected for integrity purposes.
4. Vehicle mounted tanks shall be equipped with flame/spark arrestors on vents to ensure that self-ignition does not occur.
5. Tanks will not be used to store incompatible materials in sequence unless first thoroughly decontaminated.
6. Any tank utilized for storing different products between construction locations will be thoroughly decontaminated prior to refilling.

C. Unloading/Loading Areas

1. If it is necessary during the project, re-fueling and transferring of liquids shall only occur in pre-designated locations that are on level ground and at least 100 feet from any waterway. Where conditions require construction equipment (e.g., Bobcat/front-end loader/excavator) to be re-fueled within 100 feet of any waterway, or as prescribed by a project specific permit, the above requirements shall also apply and will be strictly enforced. This activity must be continuously manned (minimum of two attendants plus a Company Inspector) to ensure that overfilling, leaks, or spills do not occur. In addition, all this equipment must be surrounded by temporary containment as described above.
2. All service vehicles used to transport fuel must travel only on approved access roads and workspace and be equipped with an appropriate number of fire extinguishers and an oil spill response kit as identified in Table 2 of Appendix A.

D. Inadvertent Return Contingency Plan

1. See Appendix C

SECTION 4 - EMERGENCY RESPONSE PROCEDURES

This section provides a generic description of emergency response procedures to be performed to address oil and hazardous materials spills at the job site. Each response will vary depending upon the nature and extent of the incident. However, the general procedures outlined below will be followed.

4.1. Contractor Responsibilities

1. The Contractor must designate both an Emergency Coordinator (EC) and an Alternate EC for the project.
2. The Contractor is responsible for appropriately addressing all spills that occur directly as a result of construction-related activities.
3. For all spills the internal notification requirements of this Plan as well as WIMS 11.05.00.01 – Incident Notification and Reporting need to be followed. For spills (spills that take less than a shovel-full of dirt to clean-up), no internal notification requirements of this Plan need to be followed. However, this does not relieve the Contractor from appropriately remediating the area and reporting the spill in the daily report.
4. The Contractor shall supply the necessary manpower, PPE, and spill response equipment to appropriately address all spills that directly occur as a result of construction-related activities.
5. Ensure that all emergency spill response equipment and PPE is well-stocked and in good condition. Replace used materials when necessary.
6. If the situation warrants it, the Contractor, in consultation with the CI, shall immediately notify any local emergency spill response contractors for assistance.
7. The Contractor shall be responsible for hiring a Company approved emergency spill response contractor if the nature of the incident requires it.
8. The Contractor is responsible for immediately notifying the CI, EI or Operations Manager of any spills. The Contractor is responsible immediately reporting all spills to the CI (or OM) who will immediately contact Security Operations Center (SOC) at **855-945-5762** per 11.05.00.01 – Incident Notification and Reporting. Table 2 (of Appendix A) includes a list of emergency contacts.

4.2. Company Responsibilities

1. The Company shall be responsible for ensuring that the Contractor adequately follows the procedures outlined in this Plan at all times.
2. The Company shall be responsible for all verbal and written external notifications made to any regulatory agency or any local emergency responders.

4.3. Emergency Contacts

Table 1 (Appendix A) provides a list of Company and Contractor emergency contacts.

4.4. Duties of Chief Inspector or Operations Manager

The duties of the CI, EI or OM for reportable spills include the following:

1. Determine the source, character, amount, and extent of the spill.
2. Assess the potential hazards to the job site, environment, and surrounding community and contact the Construction Employee Safety Representative if any hazards are detected.
3. Evacuate the area if necessary.
4. Report the spill in accordance with the internal notification procedures outlined in Section 5.1 and the external notification procedures outlined in Section 5.2.
5. Commit manpower and equipment for minor incidents that can be reasonably remediated by the Contractor.
6. Oversee Contractor's spill response efforts to contain and control all spills to ensure they adequately follow the procedures outlined in this Plan.
7. Document the Contractor's response effort, including taking photographs wherever possible.
8. Generate a Concern Report, or request that the SOC generate a Concern Report.

SECTION 5 - EMERGENCY SPILL RESPONSE AND PERSONAL PROTECTIVE EQUIPMENT

Table 2 (Appendix A) provides a list of the minimally required Emergency Spill Response Equipment and Personal Protective Equipment (PPE) for this project.

SECTION 6 - SPILL NOTIFICATION PROCEDURES

6.1. Internal Notifications

1. All spills are to be immediately reported to the CI, EI or OM who will immediately contact SOC per [11.05.00.01 – Incident Notification and Reporting](#). Table I (Appendix A) includes a list of emergency contacts.
2. The person reporting the spill/release should review Appendix B for a list of minimum information requirements needed for reporting to the SOC.
3. The SOC is responsible for generating a Concern Report and notifying the appropriate Environmental Specialist.
4. The Environmental Specialist will review the Concern Report and “escalate” or “close” the concern as appropriate.
5. The SOC is responsible for notifying Manager, Environmental Services, as specified in [11.05.00.01 – Incident Notification and Reporting](#). Included as Appendix A is Table 1, which is a list of Company and Contractor emergency contact numbers.

6.2. External Notifications

1. The SOC is responsible for immediately notifying the National Response Center (NRC), and other regulatory agencies, as specified in [11.05.00.01 – Incident Notification and Reporting](#).
2. The CI, EI and or OM will consult with the appropriate Company Lead Environmental

Specialist and determine who will be responsible for any necessary first-response notifications to an emergency spill response team to help contain the spill. If the spill occurs offshore, refer to the Offshore Spill Response Plan (OSRP). The CI (or OM) is responsible for any necessary first-response notifications to an emergency spill response team for assistance containing the spill. If the spill occurs offshore, refer to the Offshore Spill Response Plan (OSRP).

3. After all required immediate notifications are made by the SOC, Manager, Environmental Services will make any necessary subsequent verbal and written notifications to regulatory agencies.
4. If a spill poses a threat to human health or the environment, the SOC, shall coordinate with the EH&S Representative for the affected area to immediately contact the Local Emergency Planning Committee (LEPC). When determining if the LEPC should be contacted or not, any gas release to the atmosphere must be taken into consideration. Note: Linear Projects may extend through multiple LEPC jurisdictions. As a result, all jurisdictions must be listed below.

The appropriate LEPC is:

Name:	<i>Enter</i>
Organization:	<i>Enter</i>
Phone Number:	<i>Enter</i>

6.3. Emergency Spill Response Contractors

The Company has arrangements with several emergency spill response contractors to address emergency responses beyond the capabilities of the Contractor.

If necessary, the following firms could be utilized for this project:

Company:	<i>Enter</i>
Name:	<i>Enter</i>
Location:	<i>Enter</i>
Phone Number:	<i>Enter</i>

Company:	<i>Enter</i>
Name:	<i>Enter</i>
Location:	<i>Enter</i>
Phone Number:	<i>Enter</i>

6.4. Local Emergency Responders

The Contractor or the CI (or OM) may call the following local emergency responders should their assistance be required:

Service	Telephone Number
Emergency Medical Services	<i>Enter</i>
Hospital	<i>Enter</i>
Fire	<i>Enter</i>
Police	<i>Enter</i>

Note: Linear Projects may extend through multiple Emergency Responder areas. Contractor must ensure all jurisdictions are listed. Use attachments as needed.

SECTION 7 – CLEAN-UP PROCEDURES

The following section outlines specific procedures to be followed when addressing spills:

7.1. Spills

1. Small spills and leaks must be remediated as soon as feasible. Use absorbent pads wherever possible.
2. Restrict spills to the containment area, if possible, by stopping or diverting flow.
3. If the spill exceeds the containment structure's capacity, immediately construct additional containment using sandbags or fill material. Every effort must be made to prevent the spills from entering a water body.
4. If a spill reaches a water body, immediately place oil booms downstream in order to contain the material. As soon as possible, remove the floating layer with absorbent pads.
5. After all recoverable oil has been collected and drummed, place all contaminated PPE, spill clean-up equipment, and any impacted soil into appropriate containers.
6. For significant quantities of impacted soils, construct temporary waste piles using plastic sheets. This material should subsequently be transferred into lined roll-off boxes as soon as feasible.
7. The Company Lead Environmental Specialist will coordinate all waste characterization, profiling, and disposal activities.

7.2. Equipment Cleaning/Storage

1. Upon completion of remedial activities, the Contractor shall be responsible for decontaminating the used emergency response equipment as well as the PPE.
2. The Contractor shall be responsible for replacing any spent emergency response equipment and PPE prior to resuming construction-related activities.
3. Decontamination rinse fluids shall be collected and containerized. The Environmental Specialist will coordinate waste characterization and disposal activities.
4. Reusable PPE shall be tested and inventoried prior to being placed back into service.

7.3. Waste Disposal

The Contractor may be responsible for waste management and waste disposal or any waste generated as the result of a spill (review contract language and project specifics). However, the Contractor's Environmental Representative will coordinate with the Williams Environmental Specialist for all waste characterization, profiling, and disposal activities. The Williams Environmental Specialist should refer to 03.00.00.03 – Waste Management, as needed.

Appendix A

Table 1: List of Emergency Contacts

Name	Job Description	Phone Number (24-hr)
Security Operations Center (SOC)	24-hour Call Center	855-945-5762
Chief Inspector	<i>Insert name here</i>	<i>Enter number</i>
Operations Manager	<i>Insert name here</i>	<i>Enter number</i>
Environmental Specialist	<i>Insert name here</i>	<i>Enter number</i>
Contractor	Job Description	Phone Number
Emergency Coordinator	<i>Insert name here</i>	<i>Enter number</i>
Alternate Emergency Coordinator	<i>Insert name here</i>	<i>Enter number</i>
Regulatory Agencies	Name	Phone Number
	National Response Center	800/424-8802
	State Emergency Response Commission (SERC)	<i>Enter number</i>
	<i>Insert jurisdictional agency here (LEPC, FD, PD, Sheriff, etc.)</i>	<i>Enter number</i>

Table 2: Emergency Spill Response and Personal Protective Equipment

Modify this list as necessary for site conditions. *Minimum requirements are shown with an **.

Equipment	Quantity	Location
Chemical spill kit	1	adjacent to workspace
Oil spill kit	1	adjacent to workspace

SPILL RESPONSE EQUIPMENT:

1, 55-gallon open-head drum *
Blank drum labels *
2 shovels *
1 oil boom (10' x 3") * / 2 oil booms recommended
10 oil pillows (18" x 18") *
10 oil socks (48" x 3") *
25 oil mats/pads (24" x 24") *
1 box garden-sized, 6-mil, disposal polyethylene bags (w/ ties) *
1 bag loose chemical pulp 3 chemical pillows (18" x 18")
3 chemical socks (48" x 3") 10 chemical mats/pads (24" x 24")

PERSONAL PROTECTIVE EQUIPMENT:

The inventory of PPE should include enough for at least 4 responders reacting to a significant leak/spill.

4 pairs of oil-proof gloves *
Splash goggles
half-face respirators (w/ cartridges for benzene)
Tyvek suits
waterproof/ chemical resistant hip-waders

Appendix B

Spill/Release Reporting Checklist

Call SOC for any Spill. Gather the following information when reporting spills/releases to the SOC:	Notes	
Name, title, company and phone number of person reporting incident		
Spill/release location, project, facility, right-of-way (state, county, city, township, range, address, coordinates, nearest crossroads)		
Date of spill/release		
Time of spill/release		
Was material released as a liquid, solid, or gas?		
Description of material released (oil, hydraulic fluid, glycol, condensate, etc.)		
Estimated amount (volume or weight) of material spilled/released (Specify Unit – gal, ft ³ , lbs., etc.)		
Has spill/release been stopped?		
Duration of spill/release (date and time release was stopped)		
Affected media (land, water, air, secondary containment, building, etc.)		
Has affected area of spill/release been cleaned up?		
Duration of spill/release cleanup activities		
Estimated volume and/or weight of cleaned up material. Specify type of material removed such as soil, concrete, pads, and unit of measure (gal, ft ³ , lbs., etc.)		
Containment of cleaned up material (drum, tank, roll off) and location (spill site, contractor yard, station)		
Brief description of cause of spill/release		
Complete Environmental Concern Report – Contact SOC		
Contacts:	SOC (Required)	
	Supervisor	
	Pipeline Control	
	Environmental Specialist	
Additional Notes:		

Revision History

Rev Date	Rev #	Request #	Section #	Description
01/23/2020	00	N/A	N/A	New WIMS Operating Guideline attachment.
3/18/2021	01	N/A	N/A	Regional Energy Access Expansion Project
3/1/2022	02	N/A	N/A	Regional Energy Access Expansion Project- TD Updates
7/14/2022	03	N/A	N/A	Regional Energy Access Expansion Project- TD Updates – DP Plan – Appendix C

Appendix C

Direct Pipe[®] Monitoring, Inadvertent Return Response, and Contingency Plan



Transcontinental Gas Pipe Line Company, LLC

**Direct Pipe® Monitoring,
Inadvertent Return Response, and Contingency Plan**

Regional Energy Access Expansion

July 2022

This page intentionally left blank

Table of Contents

1	Introduction	1
1.1	Project Background.....	1
1.2	Direct Pipe® Process.....	4
1.3	Direct Pipe® Crossing Information.....	5
2	Personnel Responsibilities.....	8
2.1	General / Shared Responsibilities	8
2.2	Specific Overall Roles and Responsibilities.....	8
3	Pre-Construction Activities	11
3.1	Training.....	11
3.2	Site Inspection	11
3.3	Pre-Construction Landowner Notification	12
3.4	pre-construction Agency Notification	12
4	Documentation	13
4.1	Project Organizational Charts	14
5	Drilling Fluid Management.....	15
5.1	Drilling Fluid Types	15
5.2	Additives	16
5.3	Disposal.....	16
5.4	Tracking Logs	16
6	Direct Pipe® Operational Conditions and Response Actions.....	18
6.1	Condition 1: Normal Tunneling (Full Drilling Fluid Circulation).....	18
6.2	Condition 2: Loss of Slurry Fluid Circulation or Loss of Lubrication Fluid	19
6.3	Condition 3: Inadvertent Returns.....	20
7	Responding to Inadvertent Returns.....	22
7.1	Materials and Equipment	22
7.2	Clean Up Response Protocol.....	22
7.3	Potable Water Supply	23
8	Notifications.....	26
8.1	Pre-Construction Landowner Notification	26
8.2	Agency Notification	26
8.2.1	Pre-Construction Notification	26
8.2.2	Condition 2: Loss of Slurry Fluid Circulation or Loss of Lubrication Fluid	26
8.2.3	Condition 3: Inadvertent Returns	26
8.2.4	Impact to Water Supply	27
9	Restoration	28

10 Contingency Planning.....29

 10.1 Direct Pipe® Components and Limitations.....29

 10.1.1 Pipe Thruster.....29

 10.1.2 Microtunneling Boring Machine (MTBM).....29

 10.1.3 Direct Pipe® Limitations and Potential Causes of Failure29

 10.2 Alternate Crossing Measures30

 10.3 Abandonment30

11 References.....32

APPENDICES

- Appendix A Direct Pipe® Organizational Chart
- Appendix B Direct Pipe® Design Reports
- Appendix C Drilling Fluids List and Safety Data Sheets (SDS)
- Appendix D Disposal Tracking Log
- Appendix E Publicly Available Water Supply Information
- Appendix F Landowner Letter Template
- Appendix G Landowner Private Water Supply Correspondence

List of Tables

Table 1 Proposed DP Locations.....	6
Table 2 DP Waterbody Crossings	6
Table 3 Unique Conditions or Features within Proximity to DP.....	6
Table 4 Documentation Maintained.....	13

List of Acronyms and Abbreviations

cfs	Cubic feet per second
CI	Chief Inspector
Commission	Federal Energy Regulatory Commission
Contractor	Direct Pipe® Contractor
DP	Direct Pipe®
Dth/d	Dekatherms per day
EI	Environmental Inspector
FERC or Commission	Federal Energy Regulatory Commission
HDD	Horizontal Directional Drill
Plan	Direct Pipe® Monitoring, Inadvertent Return Response, and Contingency Plan
HP	Horsepower
IR	Inadvertent Return
ISO	International Organization for Standardization
Mdt/d	Thousand Dekatherms Per Day
MLV	Mainline Valve
MP	Milepost
M&R	Meter and Regulating
NSF/ANSI	NSF/American National Standards Institute
NTU	Nephelometric Turbidity Units
OD	Outside Diameter
PADEP	Pennsylvania Department of Environmental Protection
PFBC	Pennsylvania Fish and Boat Commission
Project	Regional Energy Access Expansion
Protocol	Drilling Fluids Management Protocol
ROW	Right-of-Way
SDS	Safety Data Sheets
State Agency	State Agency
Transco	Transcontinental Gas Pipe Line Company, LLC

UAV	Unmanned Aerial Vehicle
USFWS	United States Fish and Wildlife Service
Williams	The Williams Companies, Inc.

1 INTRODUCTION

1.1 PROJECT BACKGROUND

Transco, indirectly owned by The Williams Companies, Inc. (Williams), is seeking authorization from the Federal Energy Regulatory Commission (FERC or Commission) under Section 7(c) of the Natural Gas Act and Part 157 of the Commission's regulations, to construct, own, operate, and maintain the proposed Project facilities.

The Project is an expansion of Transco's existing natural gas transmission system that will enable Transco to provide an incremental 829,400 dekatherms per day (Dth/d) of year-round firm transportation capacity from the Marcellus Shale production area in northeastern Pennsylvania (PA) to multiple delivery points along Transco's Leidy Line in PA, Transco's mainline at the Station 210 Zone 6 Pooling Point¹ in Mercer County, New Jersey (NJ) and multiple delivery points in Transco's Zone 6 in NJ, PA, and Maryland (MD). The Project will consist of the following components:

- Approximately 22.2 miles of 30-inch-diameter pipeline partially collocated with Transco's Leidy Line A from milepost (MP) 0.00 to MP 22.2 in Luzerne County, PA (Regional Energy Lateral);
- Approximately 13.8 miles of 42-inch-diameter pipeline collocated with Transco's Leidy Line System from MP 43.72 to MP 57.50 in Monroe County, PA (Effort Loop);
- New electric turbine driven compressor station identified as Compressor Station 201 with 9,000 nominal horsepower (HP) in Gloucester County, NJ;
- Addition of two gas-fired turbine driven compressor units with 31,800 nominal HP at International Organization of Standardization (ISO) conditions at existing Compressor Station 505 in Somerset County, NJ, to accommodate the abandonment and replacement of approximately 16,000 HP from eight existing internal combustion engine-driven compressor units and increase the certificated station compression by 15,800 HP;
- Addition of two gas-fired turbine driven compressor units with 63,742 nominal HP at ISO conditions and modification of three existing compressors at existing

¹ A pooling point defines the aggregation of gas from multiple physical and/or virtual receipt points to a single physical or virtual point, and the disaggregation of gas from a single physical or virtual point to multiple physical and/or virtual delivery points.

Compressor Station 515 in Luzerne County, PA to support the Project and to accommodate the abandonment and replacement of approximately 17,000 HP from five existing gas-fired reciprocating engine driven compressors and increase the certificated station compression by 46,742 HP;

- Uprate and re-wheel two existing electric motor-driven compressor units at existing Compressor Station 195 in York County, PA to increase the certificated station compression by 6,000 HP and accommodate the abandonment of two existing gas-fired reciprocating engine driven compressors, which total approximately 8,000 HP;
- Modifications at existing Compressor Station 200 in Chester County, PA;
- Uprate one existing electric motor-driven compressor unit at Compressor Station 207 in Middlesex County, NJ to increase the certificated station compression by 4,100 HP;
- Modifications to three (3) existing pipeline tie-ins in PA (Hildebrandt Tie-in, Lower Demunds REL Tie-in, and Carverton Tie-in);
- Addition of regulation controls at an existing valve setting on Transco's Mainline "A" in Bucks County, PA (Mainline A Regulator);
- Modifications at the existing Delaware River Regulator in Northampton County, PA;
- Modifications at the existing Centerville Regulator in Somerset County, NJ;
- Modifications to the existing valves and piping at the Princeton Junction (Station 210 Pooling Point) in Mercer County, NJ;
- Modifications to three (3) existing delivery meter stations in NJ (Camden M&R Station, Lawnside M&R Station, and Mt. Laurel M&R Station);
- Modifications to one (1) existing delivery meter station in MD (Beaver Dam M&R Station);
- Contractual changes (no modifications) at ten (10) existing delivery meter stations in PA and NJ (Algonquin-Centerville Meter Station, Post Road Meter Station, New Village Meter Station, Spruce Run Meter Station, Marcus Hook Meter Station, Ivyland Meter Station, Repaupo Meter Station, Morgan Meter Station, Lower Mud

Run Meter Station, and Chesterfield Meter Station);

- Additional ancillary facilities, such as mainline valves (MLVs), cathodic protection, communication facilities, and internal inspection device (e.g., pig) launchers and receivers in PA; and
- Existing, improved, and new access roads and contractor yards/staging areas in PA, NJ, and MD.

Transco is proposing to use the Direct Pipe® (DP) construction method to cross the Susquehanna River as part of the Project. As part of the FERC's *Guidance for Horizontal Directional Drill Monitoring, Inadvertent Return Response, and Contingency Plans*, FERC defines an HDD as any type of trenchless construction method, including horizontal directional drilling and proprietary technologies, that utilizes drilling fluids under pressure. Although Transco is not proposing an HDD, Direct Pipe® technology would fit under this definition because it is a trenchless method that utilizes drilling fluid under pressure.

Transco has conducted geotechnical studies at the proposed DP crossing to evaluate the risks inherent in using the DP crossing method and has determined that the proposed crossing is feasible with a high likelihood of success. The DP Design Plan is included as Appendix B. Transco has developed this DP Monitoring, Inadvertent Return Response, and Contingency Plan (Plan) to establish procedures for monitoring and managing risks throughout the installation, and to allow for a quick and organized response in the event of an inadvertent release during the DP process. The specific objectives of this Plan include:

- Defining the DP process and how to identify when it has failed and should be abandoned;
- Identifying the procedures that will be followed if a DP must be abandoned;
- Minimizing the potential for an inadvertent release of drilling fluids;
- Identifying the timely detection of an inadvertent release of drilling fluids;
- Providing for environmental protection of waterbodies and associated habitats, in the event an inadvertent release occurs;
- Establishing response procedures to address containment and clean-up of an inadvertent release of fluids; and
- Providing for notifying the appropriate parties and regulatory agencies in the event of an inadvertent release of fluids.

Transco will ensure that the DP Contractor(s) (Contractor) complies with the methods outlined herein during construction, restoration, and operation of the Project. Contractor personnel will be trained on the requirements of this Plan during mandatory pre-construction environmental training. Compliance will be documented in the field by Environmental Inspectors (EI) in weekly construction inspection reports, which will be submitted to FERC for review and comment. This Plan is subject to revision based on new data or on agency recommendations.

Preparing for a successful DP crossing, one that minimizes impacts to sensitive resources and the surrounding communities, means that the Project team has:

- Identified the appropriate resources to oversee the installation and provided clear direction on roles and responsibilities.
- Trained its personnel on how to properly monitor conditions of the installation so that they may recognize both normal and abnormal operating conditions.
- Trained its employees on how to respond to abnormal operating conditions, to take corrective or mitigating actions before a warning sign escalates into something more concerning.
- Trained its employees on how to respond to an inadvertent return, so they may understand direct actions that need to be taken in the field to mitigate the impact, and so they may know how to report such an incident.

1.2 DIRECT PIPE® PROCESS

The DP installation method is a single-pass trenchless pipe installation method that is a registered trademark of the trenchless technology system developed by Herrenknecht AG, Germany. It combines the benefits of microtunneling and HDD techniques. Relative to a traditional HDD installation, this technology minimizes the likelihood of hydraulic fracture and inadvertent release of drilling fluids because lower annular fluid pressures are required. This method uses simultaneous borehole excavation and pipe installation in a single pass process which reduces the risk of hole collapse.

DP is a remotely-controlled, guided, steerable, pipe installation process that provides continuous support to the excavation face. The process involves pushing pipe (casing or product pipe), behind a micro-tunneling boring machine (MTBM) from a pipe thruster positioned in a launch pit. A key element of DP is the ability to continuously support and control the tunnel face by applying mechanical force from the pipe thruster as well as slurry fluid pressure to the tunnel face that balances soil and groundwater pressures. A cutter wheel at the leading end of the MTBM

excavates material as a pressurized slurry system removes the cuttings through a dedicated discharge line located inside of the pipe. Since the slurry returns through dedicated discharge lines inside the pipe, the risk of inadvertent returns is reduced. The DP process does not require routine personnel entry into the tunnel; however, entry may be required for survey verification or repair/maintenance activities.

For DP crossings with a carrier pipe that is less than 42 inches, it is common to perform the DP operations with a larger casing pipe and then thrust the carrier pipe into the tunnel behind the larger casing pipe. This size difference leaves an annular space around the smaller carrier pipe. For such circumstances, a settlement analysis should be performed to examine the site-specific conditions and the DP design, and to calculate possible settlement. As determined by the settlement analysis, the annular space may need to be grouted to minimize the likelihood for subsidence.

1.3 DIRECT PIPE® CROSSING INFORMATION

The following tables summarize basic information for the DP location associated with the project. Please note there is not a Wetland Crossings table as there are no wetlands being crossed with the DP.

- **Table 1:** Provides information pertaining to the proposed **DP crossing** location including the crossing name, pipeline diameter, location (DP launching and receiving milepost), total length; and subsurface material.
- **Table 2:** Provides information pertaining to the proposed **waterbody crossings** including a unique feature identification, stream flow rate, DP launching and receiving stationing, elevation difference, depth of cover, and horizontal setback from the DP launching and receiving exit locations.
- **Table 3:** As recommended by the FERC Guidance, this table contains an abbreviated list of **potential unique conditions** or features that may increase the risk of DP failure or potential resource impacts. Subsurface mines were the only example of unique conditions that was encountered at this DP site. The subsurface mines were anticipated to cause significant problems for the HDD construction method, but this DP has been designed with safe separation above any potential mining activity.

**Table 1
Proposed DP Locations**

Crossing Name	Pipeline Diameter (inches)	Approx. Entry Milepost	Approx. Exit Milepost	Total Length (feet)	Subsurface Material
Project Component Name					
Susquehanna River	30	13.72	13.47	1,297	Clay, Sand, Silt, and Gravel

**Table 2
DP Waterbody Crossings**

Waterbody ID (Name)	Estimated Range of Stream Flow During Crossing (cfs)	Entry Station ^a	Exit Station ^a	Entry/Exit Elevation Difference (feet)	Depth of Cover ^b (feet)	Horizontal Setback Distance (Entry/Exit, feet) ^c
DP ID						
Susquehanna River	855 to 8,846	0+00	12+97	6.7 feet	~25 – 45 feet	Entry - ~270 feet Exit - ~273 feet

^a Stationing as shown on Direct Pipe® Design Drawing. E&S stationing has not yet been developed.
^b Vertical separation between the bed of the waterbody and the DP profile
^c Distance from the closest edge of the sensitive resource being crossed to the DP entry and exit locations

**Table 3
Unique Conditions or Features within Proximity to DP**

Unique Condition	Description and Mitigation
DP ID: Susquehanna River	
Subsurface mines	Subsurface coal mining was observed in the desktop geology review, with coal seams identified in some of the geotechnical borings completed. These mines were considered problematic for the HDD method at this site. This DP has been designed within the alluvial soils overlying the bedrock with safe clearance above the potential coal seams/voids.

Comments on Settlement, Grouting

The DP profile for the Susquehanna River crossing was designed with an adequate depth of cover to minimize the risk of surface subsidence resulting from the overcut around the carrier pipe. As detailed in GeoEngineers’ Design Report in Appendix B, a systemic settlement analysis was performed and indicates the surface settlement would be less than 1 inch in the vicinity of Main Street, assuming the 30-inch carrier pipe is in a 46-inch diameter hole. However, to further minimize the risk of surface settlement, Transco will simultaneously inject a bentonite-based grout into the annulus while thrusting the 30-inch carrier pipe behind the anticipated 42-inch casing. The grouting location would be at the reducer between the 42-inch casing and 30-inch carrier

pipe. The grouting pump would supply grout at a calculated rate to fill the annulus as the carrier pipe is advanced. The Trenchless Engineer and the DP Operator will monitor the grouting rates using the protocols outlined in Section 6 and will adjust as necessary to minimize the chances for an inadvertent return caused by excessive pump rates. Additionally, the grout volumes and pipe advance rates will be monitored to ensure the annular space is adequately filled.

2 PERSONNEL RESPONSIBILITIES

2.1 GENERAL / SHARED RESPONSIBILITIES

Transco and the Contractor will employ qualified personnel prior to the start of DP operations that have responsibilities in their field. The project team have overall responsibility for implementing this Plan and ensuring compliance. Additionally, compliance with this Plan and all Project permits as noted in Resource Report 1, is the responsibility of all personnel on this Project, including the Contractor.

Shared responsibilities include:

- Verify that a copy of this Plan is available on-site and accessible to all construction personnel.
- Verify that all workers are properly trained and familiar with all aspects of the DP activity and with the implementation of the Plan, prior to and during tunneling operations.
- Verify that all DP equipment is in working order, including annular pressure monitoring equipment.
- Monitoring the DP alignment for IRs and other signs of environmental impact.
- Maintain constant communication with project team leadership and Contractor personnel if an inadvertent return (IR) is suspected.
- In the event of an IR, coordinate corrective actions and the cleanup response and notify regulatory agencies timely. Verify all waste materials are properly containerized, labelled, and removed from the site to an approved facility.
- Confirm that drilling mud/spoils/cuttings associated with the crossings are managed and disposed of at an approved facility if contaminated soil is encountered.
- Recognize that all personnel on site have the authority to stop work. Stop work may be utilized as response protocols require, or it may be utilized in the event this Plan is not being followed.

2.2 SPECIFIC OVERALL ROLES AND RESPONSIBILITIES

The Contractor will be responsible for conducting all DP operations in accordance with all Project permits, the engineering/geotechnical design, best management practices, industry standards, and this plan. Transco's project team will monitor and record DP operations and

ensure compliance with all applicable permit conditions. Specific overall roles and responsibilities for personnel are:

Project Manager (PM) – The Project Manager is the leader of the project team and has the accountability for all aspects of the Project.

Trenchless Engineer – Transco will designate a Professional Engineer (PE) or Professional Geologist (PG) responsible for the trenchless design and engineering review of the DP throughout the entire project life cycle. The Trenchless Engineer will be on site during drilling operations.

Construction Manager (CM) – Individual who has direct oversight over the inspection workforce, contractor, and all construction activities associated with the Project.

Spread Chief Inspector (CI) – Transco will designate a CI for the Regional Energy Lateral project scope item. The CI will have overall authority for construction activities that occur on the Regional Energy Lateral, including the DP installation.

Trenchless Inspector – The Trenchless Inspector's primary responsibility is to observe and document all DP site activities occurring during each shift. The Trenchless Inspector will be familiar with this Plan, the Contractor's drill plan, the Project specifications, and all permit conditions. The Trenchless Inspector shall ensure the Contractor follows all items as described in this plan. Should the Trenchless Inspector observe a deviation or out of compliance condition, the CI, CM, and EI shall be notified immediately.

Environmental Inspector (EI) – One EI will be assigned during active construction. The EI will have peer status with all other activity inspectors and will report directly to the Transco CI who has overall authority on the Construction Right-of-Way (ROW). Some larger projects will have a Lead EI. In this case, the Lead EI will report directly to the CI. The EI will have the authority to stop activities that violate the environmental conditions of the FERC Certificate (as applicable), other federal and state permits, or landowner requirements and to order corrective action.

Environmental Specialist Compliance Manager (ECM) – The ECM works closely with the EIs to provide guidance and ensure consistency from the EIs. The ECM also coordinates with EIs on the documentation of field conditions or concerns and pushes that information to the Environmental Project Lead. The ECM is the lead for permitting and environmental compliance efforts during construction of the Project. The ECM is typically the point of contact between Company and regulatory agencies.

General Contractor Superintendent – The General Contractor Superintendent will be the senior field representative of the Contractor. This Superintendent has responsibility for the entire construction spread, including the DP installation.

DP Superintendent – The DP Superintendent will be the senior on-site representative of the Contractor and will have the overall responsibility for implementing this Plan on behalf of the Contractor. The DP Superintendent will report directly to the General Contractor Superintendent. The DP Superintendent will be familiar with all aspects of the DP activities, the contents of the Plan, and the conditions of approval under which the activity is permitted to take place. The DP Superintendent will make a copy of this Plan available at the drill site and will distribute it to the appropriate construction personnel. The DP Superintendent will ensure that workers are properly trained and familiar with the necessary procedures for response to an IR.

DP Operator – The DP Operator will be responsible for operating the DP equipment and pumps, monitoring circulation back to the DP launching location and monitoring annular pressures during tunneling. In the event of loss of circulation or abnormal annular pressure readings, the DP Operator must communicate the event to the DP Foreman, Superintendent, and Contractor field crews, as well as the onsite Trenchless Inspector and EI. The DP Operator is responsible for stoppage or changes to the DP program in the event of observed or anticipated IR.

DP Contractor Personnel – During DP installation, field crews will be responsible for monitoring the DP alignment along with the Transco field representatives. Field crews, in coordination with the EI, will be responsible for timely notifications and responses to observed releases in accordance with this Plan.

3 PRE-CONSTRUCTION ACTIVITIES

3.1 TRAINING

Prior to DP site set-up, and consistent with the FERC guidelines, site-specific implementation, environmental, and safety training will be conducted for all Transco and Contractor personnel. This training will address all applicable environmental impact avoidance and minimization measures that will be implemented during tunneling. Each person involved in DP operations will be familiar with the locations of IR containment equipment and materials, and the specific procedures for handling IRs. Training will be conducted for any new personnel added to the Project after DP activities have commenced. Documentation of those who received training will be maintained as described in Section 4. The site-specific training will include, but not be limited to:

- Safety and environmental training specific to the DP installation;
- Site-specific geotechnical and design conditions;
- The locations of sensitive environmental resources;
- The location, operation, inventory, and condition of IR response equipment and materials;
- Provisions of this Plan and site-specific permit and monitoring requirements;
- Pre-construction landowner and agency notification requirements;
- Site-specific IR monitoring requirements;
- DP procedures for IR prevention;
- Protocols for detecting, communicating, and reporting IRs; and
- IR response procedures for mitigating impacts and recovery operations.

3.2 SITE INSPECTION

Transco will inspect the DP path prior to the start of DP activities. If site-specific conditions impede the ability to conduct visual inspection along the DP alignment, modifications to the proposed inspection routine will be developed and communicated to the Contractor, Project team and EI. Inspections may include the use of a boat or an unmanned aerial vehicle (UAV) to evaluate the drill alignment. If previously unidentified conditions or features are discovered that necessitate a modification to the approved Plan, Transco will coordinate with FERC to obtain the necessary variances prior to implementation.

3.3 PRE-CONSTRUCTION LANDOWNER NOTIFICATION

Transco will notify landowners prior to construction as detailed in Section 8, Notifications.

3.4 PRE-CONSTRUCTION AGENCY NOTIFICATION

Transco will notify agencies prior to construction as detailed in Section 8, Notifications.

4 DOCUMENTATION

A copy of this Plan will be available and accessible to all construction personnel. Documentation detailed in Table 4 below will be maintained by parties noted in the right-most column. If requested, this information will be provided to FERC and other federal and state agencies with applicable regulatory jurisdiction.

**Table 4
Documentation Maintained**

Procedure	Documentation	Personnel Responsible for Maintaining Documentation
Employee Training	<ul style="list-style-type: none"> • All personnel on this Project will be trained for environmental compliance, including IR management. • Record of employee training detailing when training was conducted, material covered, and employees in attendance. 	<ul style="list-style-type: none"> • ECM • CM
DP Visual and Pedestrian Monitoring	<ul style="list-style-type: none"> • Environmental and Construction Inspectors will document within daily reports IR monitoring and the finding of these inspections. • An IR Tracking Log will be maintained. 	<ul style="list-style-type: none"> • DP Contractor • EI • Trenchless Inspector
DP Instrument Logs	<ul style="list-style-type: none"> • Tunneling progression • MTBM performance information and thrusting loads • Slurry fluid discharge rate, pressure, and volume. • Lubrication fluid volumes. • Down-hole annular pressure monitoring. • Navigation/guidance system survey information 	<ul style="list-style-type: none"> • DP Contractor
Slurry Fluid and Lubrication Fluid Composition	<ul style="list-style-type: none"> • Use of drilling fluid additives, including the quantity, timing, and location of use. • Monitoring logs of slurry fluid and lubrication fluid physical properties throughout tunneling activities. • Laboratory results of sampled drilling fluid/source water for any inorganic and organic environmental contaminants. 	<ul style="list-style-type: none"> • DP Contractor
Public and Agency Inquiries/Comments	<ul style="list-style-type: none"> • A record of communication with the public and agencies that has occurred during DP activities. • This record will include inquiries and comments, as well as response actions. 	<ul style="list-style-type: none"> • ECM • Land Representatives • CM (support as necessary)

A summary of DP-specific information will be included in the applicable construction status reports provided to FERC. This information may include overall status, a summary of visual and pedestrian monitoring activities, issues encountered (including any IRs) and response actions, and complaints and how they were addressed.

4.1 PROJECT ORGANIZATIONAL CHARTS

Project specific organizational charts that include contact information are found in Appendix A.

5 DRILLING FLUID MANAGEMENT

The DP process utilizes drilling fluids to facilitate the associated operations. There are two separate drilling fluid systems in this operation - the engineered drilling fluid (or slurry fluid) and the lubrication fluid. Both the slurry fluid and the lubrication fluid can be comprised of water and bentonite clay. Bentonite clay is an absorbent aluminum phyllosilicate clay consisting mostly of sodium montmorillonite. It is a naturally occurring clay, extremely hydrophilic, and expands when wet absorbing several times its dry mass in water. Exact mixtures of fluids and additives for the slurry fluid and the lubrication fluid will be included within the Drilling Fluids Management Plan which will be developed by the Contractor and their Mud Engineer and evaluated by Transco. This section describes how the drilling fluid will be managed throughout the installation process including proper disposal techniques of excess drilling fluids and associated materials.

For this crossing, Transco plans to withdraw water from the Susquehanna River for use as drilling fluid, and Transco has acquired the necessary permits from SRBC to do so. If the contractor proposes a drilling fluid from an off-site location, the source must be submitted to Transco for approval. If the water supply is a non-municipal source, the drilling fluid/water source should be tested for environmental contaminants prior to use, and documentation of consultation with local and state agencies regarding the results of such tests be provided.

A Drilling Fluids Management Protocol (Protocol) will be developed by the Contractor ahead of DP activities. The Protocol will include the items outlined in Sections 5.1 through 5.4, below.

5.1 DRILLING FLUID TYPES

The composition of drillings fluids and its engineering properties will be formulated to be suitable for the given subsurface conditions encountered. There are two types of drilling fluid used during the DP process. The lubrication fluid and the engineered drilling fluid (or slurry fluid), described below:

Lubrication Fluid

- Stabilize the borehole against collapse, and counterbalance the earth and groundwater pressure along the length of the drive;
- Create a filter cake to prevent fluid loss to the formation;
- Reduce the friction between the pipe and the tunnel.

Slurry Fluid

- Support the excavation face;
- Lubricate, cool, and clean the cutter head;
- Mix with and transport spoils through the slurry return line to the separation plant at the ground surface for recycling or disposal.

5.2 ADDITIVES

A list of proposed drilling fluid additives, including Safety Data Sheets, will be provided in Appendix C by the Contractor, once selected. Only pre-approved, non-petrochemical-based, non-hazardous additives that comply with permit requirements and environmental regulations will be utilized. Additionally, proposed additives will conform with NSF/ANSI Standard 60 (Drinking Water Treatment Chemicals – Health Effects). Transco will work with FERC and the applicable state agencies, should additional and/or alternate drilling fluid products be proposed.

5.3 DISPOSAL

Drilling fluid and cuttings handling and disposal will comply with the stipulations outlined below:

- Contractor will provide a process and description for how the materials will be collected and stored (e.g., will it be placed into portable tanks or roll-off containers). This will vary significantly based on volume, location, environmental conditions, space, etc.
- Transco and Contractor will assess and determine the appropriate facilities where the materials will be sent for disposal.
- Contractor will provide a sampling plan for conducting any analytical or waste characterization required by the disposal facility. The plan will address if the materials needs to be treated or solidified prior to disposal, and the means and methods to do so, if required.
- All documentation relating to disposal will be kept on-site, tallied for accuracy, and later stored within the Plan, specifically Appendix D for Project record.

5.4 TRACKING LOGS

Instrument logs will be monitored throughout the day to ensure function and progression with tunneling progression, drilling fluid discharge rate and pressure, and downhole annular

pressure monitoring. Construction Inspectors will document daily the condition of the worksite which will include a visual check of all equipment that is a part of the drilling fluid management effort. This will be recorded on daily reports.

6 DIRECT PIPE® OPERATIONAL CONDITIONS AND RESPONSE ACTIONS

The DP construction method was chosen for this crossing because of the reduced risk of inadvertent returns. To further minimize the potential environmental impact associated with a loss or release of DP slurry or lubrication fluids, Transco and its Contractor will employ best efforts to maintain full circulation of fluids through the slurry lines and recycle the fluid to the extent practical. Transco and its Contractor will utilize real-time annular pressure monitoring with the use of a down-hole annular pressure tool throughout tunneling operations, to help prevent hydraulic fracture and IR. The annular pressure readings will be recorded and evaluated relative to calculated and expected annular drilling fluid pressure ranges. The Contractor will also measure slurry fluid circulation rates and pressures, will closely monitor the DP slurry returns to ensure that fluids are circulating to the return pits. Additionally, the lubrication fluid volume that is introduced at the launch seal and from the MTBM will be monitored relative to the tunneling rate.

Monitoring of the DP alignment for an IR is an integral component of this plan and the success of any DP. Monitoring frequency will vary depending upon a multitude of factors and characterized by the operating conditions listed below. For the purposes of this plan and the DP operations there are three operating conditions:

- Normal Tunneling (Full Slurry Fluid Circulation);
- Loss of Slurry Fluid Circulation or lubrication fluid; and
- Inadvertent Returns

The following sections describe drilling and monitoring procedures for each operational condition.

6.1 CONDITION 1: NORMAL TUNNELING (FULL DRILLING FLUID CIRCULATION)

When DP operations are in progress and full slurry fluid circulation is being maintained within the DP slurry lines with no loss of lubrication fluid, the following monitoring protocol shall be implemented:

- The presence of slurry fluid returns within the DP slurry lines will be periodically monitored and documented.
- Land-based areas along the alignment will be periodically walked and visually inspected for signs of inadvertent fluid returns as well as surface heaving and settlement.
- The river will be visually inspected from the banks for a visible fluid plume.

Inspections may include the use of a boat or UAV to evaluate the drill alignment.

- Slurry and lubrication fluid products present at the jobsite shall be documented.
- Slurry and lubrication fluid properties will be tested, monitored, and recorded during drilling operations.
- Slurry and lubrication fluid pump rates and pump durations will be recorded.
- Monitor lubrication fluid tank levels.
- During tunneling operations, downhole annular pressures will be recorded and evaluated relative to calculated and anticipated annular drilling fluid pressure range.
- If the downhole annular pressure begins to deviate outside of the calculated and anticipated annular drilling fluid pressure range, the Contractor will evaluate tunneling conditions and take necessary and reasonable steps to bring the annular drilling fluid pressure back within the expected range.

6.2 CONDITION 2: LOSS OF SLURRY FLUID CIRCULATION OR LOSS OF LUBRICATION FLUID

When DP operations are in progress, some minor losses of fluid can be expected as part of the process during normal tunneling operations. When fluid circulation is lost or significantly diminished (“loss of circulation”), or if lubrication fluid volume is lost, all protocol identified in Condition 1 above will be followed, and additionally, the following monitoring protocol will be implemented:

- The EI will be notified by the Trenchless Engineer or Trenchless Inspector of lost or significantly diminished slurry fluid returns or loss in lubrication fluid volume. The EI will immediately notify the ECM of the status of the drill. The ECM and Trenchless Engineer will coordinate and notify PADEP as outlined in Section 8.2.2.
- The DP will continue while the EI, Trenchless Engineer, Trenchless Inspector, and Contractor will then immediately perform a walkthrough inspection along the drill alignment looking for inadvertent returns. Visual inspection frequency will be increased along the alignment as well as other areas of high risk for inadvertent returns. Inspections will include attention to sensitive environmental resources. Inspections may include the use of a boat or UAV to evaluate the drill alignment.
- If the conditions suggest the high likelihood of an IR, the Trenchless Engineer will make the decision to stop the DP for further evaluation.

- Pump rates and pump durations will be recorded to estimate the lost circulation volumes. The Contractor will take reasonable steps to restore circulation, and the Trenchless Inspector will document steps. The slurry and/or lubrication fluid properties will be evaluated and modified in consultation with the mud engineer/technician as it relates to the subsurface formation being encountered.
- If fluid loss continues, the EI will increase the frequency of visual inspection along the drilled path alignment as appropriate. Pump rates and pump durations will be recorded along with lubrication tank losses to estimate the lost fluid volumes. Site-specific parameters will be evaluated and additional reasonable steps to restore circulation will be taken.

6.3 CONDITION 3: INADVERTENT RETURNS

During DP activities it is typical for drilling fluid to surface near the upland launching and receiving points, where there is less overburden to counteract the fluid pressures. Such returns are both normal and anticipated and are therefore not considered “inadvertent returns”. The DP entry and exit locations and the workspace have been designed to minimize the impact of such returns. At these locations, containment measures will be in place to prevent migration outside of the workspace and to protect adjacent resources.

As outlined in Section 6.2, Transco will conduct monitoring in the event of lost or significantly diminished slurry volumes or loss in lubrication fluid volumes. If during that continued monitoring an inadvertent return of fluids is detected, the following will occur:

- Work will be stopped;
- Clean up protocol, described in Section 7.2, will be employed immediately;
- The EI and Trenchless Engineer or Trenchless Inspector will document the location, magnitude, and potential impact of the IR and notify the ECM;
- The ECM and Trenchless Engineer will coordinate and make the required notifications outlined in Section 8.2.3;

Prior to restarting DP Operations, the Trenchless Engineer will submit a Restart Report that includes the following information:

- Date and time of the release;
- Location (latitude and longitude) of the release;
- Estimated volume of release;

- Impact to sensitive resources, if applicable;
- Clean up procedures/containment employed;
- Analysis of the cause of the release;
- Assessment of alternative approaches to reduce possibility of a release upon restart;
- Analysis of risk of additional release(s);
- Proposed schedule for recommencement of DP operations and anticipated duration of DP operations; and
- Applicable maps and photographs.

Drilling operations (aside from cleanup and containment) will not continue until the Restart Plan has been authorized by PADEP.

7 RESPONDING TO INADVERTENT RETURNS

7.1 MATERIALS AND EQUIPMENT

DP personnel will be required to have containment materials readily accessible and on site throughout the DP process. Since drilling fluid seepage can be easily controlled on land where it has the greatest potential of occurring, containment items will be stored within the drilling sites. The Contractor will also have heavy equipment such as tracked excavators, a rubber-tired excavator, or a skid steer that may be utilized to control and clean up drilling fluid seepage.

The following materials and equipment will be maintained at the DP site in sufficient quantities to contain any inadvertent releases of drilling fluid:

- Straw or hay bales;
- Wood stakes, t-post, or rebar to secure bales;
- Buckets, wheel barrows, and/or 55-gallon drums;
- Plastic sheeting or geotextile fabric;
- Silt fence;
- Sand bags;
- Sledge hammers;
- Shovels and push brooms;
- Storage tanks; and
- Leak-free hose(s) and portable pump(s).

The following materials and equipment will be maintained at a nearby location in sufficient quantities to contain any inadvertent releases of drilling fluid:

- Vacuum truck(s);
- Light tower(s) with appropriate secondary containments as applicable;
- Rubber-Tired/Tracked excavator or skid steer;
- A boat with appropriate personal safety equipment; and
- Floating turbidity curtain for use in large waterbodies.

7.2 CLEAN UP RESPONSE PROTOCOL

Although the DP construction method has a low risk of inadvertent returns at the crossing location, Transco is prepared for the risk, and the actions taken to respond to an IR will be dependent on but not limited to the location of the IR, the site-specific geologic conditions, and

the volume of drilling fluid lost. Transco will coordinate with affected landowners to access if the IR occurs outside of permitted workspace.

As previously described, the limits of disturbance at the DP entry and exit locations have been designed to account for anticipated returns. If an inadvertent return of drilling fluid is identified, the following measures will be employed:

- Work will be stopped;
- Containment and cleanup will be executed by the Contractor who will work to ensure appropriate actions are taken to reduce, eliminate, or control the return. This work will be overseen by the Trenchless Inspector and the EI.
- Agency and landowner notifications will occur as applicable (Section 8);
- Drilling fluid may be recovered, recycled, and reused to the extent practicable. All drilling fluid that cannot be reused will be disposed of in accordance with Section 5.3 of this plan.

7.3 POTABLE WATER SUPPLY

7.3.1 Publicly Available Data Reviews

The Public Water Supply Report was provided as Appendix 1 of the PADEP Chapter 105 Application for Luzerne and Monroe Counties. As part of the permit application, a review of the public water supplies located within one mile of a waterbody or wetland crossing was conducted. Groundwater wells and surface water intakes were identified for each crossing proposed as part of the Project using the PADEP eMapPA online tool. The eMapPA buffer tool was used to create a 1.5-mile buffer around the center a crossing or a group of contiguous crossings. The surface water intakes and groundwater wells within that buffer were identified. Based on the results of this review, no public water supplies were identified within the 1.5-mile buffer of the DP crossing of the Susquehanna River.

In accordance with PADEP's Draft Trenchless Technology Technical Guidance Document (PADEP Guidance Document) and the FERC Guidance for Horizontal Directional Drill, Inadvertent Return Response, and Contingency Plans Document (FERC Guidance), Transco expanded planned groundwater testing of private wells and springs up to 1,000 feet from the location of the planned DP crossing of the Susquehanna River which is beyond the area recommended by the PADEP and FERC Guidance Documents for trenchless installation in a non-karst area. To identify the existence of private water supplies, Transco developed a horizontal

offset of 1,000 feet from the entry and exit points of the planned DP crossing of the Susquehanna River.

Transco conducted a review of the PADEP's eMapPA online tool to identify groundwater wells within a 1,000-foot horizontal offset of the planned DP alignment, and surface water intakes within a 0.5-mile radius of the Susquehanna River, 1 mile upstream and 10 miles downstream of the DP. The planned DP crossing of the Susquehanna River and parcels within approximately 1.5 miles of the DP crossing are located within the public water supply service area of PA American Water Company – Springbrook District, whose water supply reservoirs are more than 8 miles from the Project workspaces (PA American Water 2021). No private or public water supply groundwater wells or surface water intakes were identified per a review of PADEP's eMapPA.

Transco also conducted a review of the Susquehanna River Basin's Water Application and Approval Viewer and determined that there are no groundwater or surface water pending or approved water withdrawals, diversions, or consumptive use projects regulated by the SRBC within 1,000 feet of the planned DP crossing, or within 1 mile upstream or 10 miles downstream of the DP crossing other than Transco's planned consumptive use and surface water withdrawal approvals.

Additionally, Transco utilized the PA Department of Conservation and Natural Resources PA Groundwater Information System to identify private water supply wells and springs located within 1,000 feet of the planned Direct Pipe. No wells or springs were identified through review of the PA Department of Conservation and Natural Resources PA Groundwater Information System.

Supporting information regarding the review of publicly available water supply information can be found in Appendix E.

7.3.2 Landowner Information Requests

Transco inquired about the presence of private water supplies during the initial survey access requests associated with the DP crossing. Additionally, Transco developed a tax parcel mailing list which included all parcel owners within 450 feet of the proposed DP alignment which is consistent with the PADEP Guidance Document's recommendations for a trenchless installation in a non-karst area. The tax parcel mailing list included offline parcels (not directly affected parcels and no surveys were conducted), as well as parcels that are directly affected by the Project. Of the 23 parcels that are within 450 feet of the DP alignment, 12 parcels are directly affected parcels or were reviewed as part of the civil and environmental surveys and the remaining

11 parcels are offline parcels. Transco sent letters to all parcel owners on June 22, 2022, requesting information on the presence of private water supplies on these parcels. A template of the letter sent to landowners is included in Appendix F of the plan. Attachment G includes a summary of landowners contacted and proof of receipt. No private water supplies have been identified by the landowners within 450' of the Direct Pipe crossing.

7.3.3 Potable Water Supply Summary

As outlined above, Transco has not identified public or private water supplies within 450' of the DP crossing and does not anticipate impacts to public or private water supplies. However, in the unlikely event that DP installation temporarily affects the water quality or yield of a public or private well/spring, Transco will provide alternative water sources or other compensation to the well owner(s). In the unlikely event that a well/spring is permanently affected due to construction activities, Transco will repair, replace, or provide alternative sources of potable water.

8 NOTIFICATIONS

8.1 PRE-CONSTRUCTION LANDOWNER NOTIFICATION

Transco has developed communication procedures to ensure proper coordination with affected landowners and abutters. Day to day communication management will be conducted by the Land Department's Right of Way Agents. The Land Department will work with the project team to ensure accurate up-to-date information is available for distribution to the appropriate recipients. The specific landowner notification procedures include, but are not limited to:

- Transco will notify affected landowners in writing prior to the start of DP activities. This notice will include:
 - A description of the proposed work, including any nighttime work proposed;
 - The name and phone number of Transco Representatives that the landowner can contact if there are any questions or concerns regarding the proposed work;
 - A toll-free phone number to contact Transco that can be used as an alternative to contacting the Right of Way Agents; and
 - A toll-free phone number to contact FERC if the landowner believes that Transco has not resolved their concerns.

8.2 AGENCY NOTIFICATION

8.2.1 Pre-Construction Notification

Transco will notify FERC, the USACE, PADEP, and PFBC of the proposed construction start date prior to commencing DP operations.

8.2.2 Condition 2: Loss of Slurry Fluid Circulation or Loss of Lubrication Fluid

If loss of circulation or lubrication fluid is detected as described in Section 6.2, the ECM will contact PADEP immediately via e-mail, phone, or electronically delivered letter. After completing site investigations, the Trenchless Engineer will follow up a written report including the steps taken to restore circulation.

8.2.3 Condition 3: Inadvertent Returns

If an IR is detected as described in Section 6.3, the ECM will contact FERC, the USACE, and PADEP immediately via e-mail, phone, or electronically delivered letter. Additional notification

could be needed for USFWS and PFBC if an IR is identified within a waterbody. In addition, a Restart Report will be submitted to PADEP for review and approval prior to restarting DP operations.

8.2.4 Impact to Water Supply

Transco does not anticipate impacts to public or private water supplies; however, in the unlikely event of impact to public or private water supply, Transco will notify PADEP with immediate verbal notification of any citizen complaint it receives of an impact to a private or public water supply upon becoming aware of an impact to a private or public water supply, and when an alternate water supply is provided. This notification includes a detailed description of the incident using the best currently available information which, for Oil and Gas Projects, shall also be reported to PADEP's online Oil and Gas Reporting Electronic (OGRE) application within 24 hours. The OGRE application is accessed via the PADEP Greenport login in system at <https://www.depgreenport.state.pa.us>.

9 RESTORATION

Areas affected by IRs will be restored to pre-existing conditions and contours to the extent practicable in accordance with the FERC Plan and Procedures and applicable permits. Upland areas will be restored through typical right-of-way restoration procedures, such as grading, seeding, and temporary and permanent erosion control devices, as necessary. Similarly, wetlands and waterbodies will be restored to the extent practicable.

Transco will continue to monitor for post-construction restoration issues, track issues identified, and correct these issues during this post-construction phase of the Project.

10 CONTINGENCY PLANNING

10.1 DIRECT PIPE® COMPONENTS AND LIMITATIONS

The DP method is one pass trenchless pipe installation method consisting of two integral parts:

- Pipe Thruster
- Microtunneling Boring Machine (MTBM)

This section briefly describes the integral parts of the DP process and describes some potential causes of failure associated with the method.

10.1.1 Pipe Thruster

The pipe thruster is the structural component housing hydraulic cylinders used to grip and push the MTBM machine, product pipe or casing forward. The pipe thruster serves to distribute jacking loads to the installed pipe and reaction loads to the pipe thruster foundation system. The Pipe Thruster Structural foundation transfers and distributes the thrust loads from the Pipe Thruster to the surrounding soil and/or rock. The foundation may be incorporated into the launching pit design. The pipe thruster foundation shall be designed to withstand the anticipated jacking force and safely transmit the applied jacking forces to the soil and rock in the vicinity of the entry pit without excessive deflection or displacement.

10.1.2 Microtunneling Boring Machine (MTBM)

Remote-controlled, guided slurry shield that provides continuous support to the excavation face. The MTBM is operated from a control module located on the ground surface and the excavation process is achieved by a rotating cutter wheel. Excavated tunnel cuttings enter a slurry/crushing chamber where they are mixed with fluid (typically water mixed with bentonite or other additives) to form a slurry. Pumps transport the slurry to the surface where a separation plant removes the solids from the slurry. The recycled slurry is then returned to the tunnel face in a closed loop system of pumps and hoses.

10.1.3 Direct Pipe® Limitations and Potential Causes of Failure

A mechanical failure occurs if there is a major mechanical breakdown of one or more pieces of equipment involved in the DP operation. If the tunneling process remains idle for an extended time, the material in the hole can seize the pipe string in place and prevent further movement such that the pipe may not continue to move in either direction. If this occurs, the

contractor will be required to change the alignment of the crossing to miss the abandoned hole and start the tunneling process from the beginning.

DP installation also may be considered a failure if after either repairing or replacing the broken equipment or vital piece of ancillary equipment, the pipeline cannot be thrust or pulled.

Another potential failure is the buckling of the pipe during installation. This could happen if the thrust force applied to the pipe during tunneling operations yields the pipe. If this happens, an attempt will be made to extract the pipe. If that is not possible, the site will be evaluated to see if a rescue shaft would be possible to retrieve the MTBM.

Encountering of subsurface obstructions or voids is another potential cause of failure. If a large boulder or other subsurface obstruction is encountered, it could impede the progress of the DP leading to a potential failure. If the obstruction is shallow enough and beneath an accessible location, it may be possible to excavate the obstruction. But if it is inaccessible, the DP may need to be redesigned to avoid the obstruction. If a void is encountered, depending on the size, the MTBM could lose the ability to steer and if damaged, the pipe behind it could become damaged.

10.2 ALTERNATE CROSSING MEASURES

During the design phase of the Project, Transco conducted geotechnical studies at the proposed DP crossing to design a crossing that minimized risk exposure. Should the DP technology fail during construction as discussed in Section 10.1, Transco would consider shifting the alignment within the proposed workspace and attempt to re-perform the DP crossing. If alignment shifts do not yield a successful DP, an evaluation of the failed attempt will be performed to determine the appropriate contingency methods to complete the crossing.

Transco will contact the applicable permitting agencies to notify them of the status of the project and provide details of the evaluation of the failure that has occurred. Transco will then consult with the agency regarding the appropriate contingency method to complete the crossing, and obtain any permits required.

10.3 ABANDONMENT

If for any reason a DP hole must be abandoned, the Contractor will fill the entirety of the abandoned hole with a cement grout to completely seal it off. The top 5 feet of the abandoned hole will be filled with compacted soil to allow vegetation to reestablish.

The grout mixture used to abandon a borehole will consist of either a cement grout or cement/bentonite grout mixture that can be pumped downhole through the slurry lines used to

tunnel the hole. The grout mix (e.g., water/cement/bentonite ratios) will be designed generally for each DP location based on the geologic formation(s) along the abandoned portion of the hole. Additional modifiers, such as those used in structural concrete, may be used to modify the flowability and/or set time of the grout. To grout the abandoned hole, the Contractor will extract all tooling (i.e., MTBM, product/casing pipe) from the hole, while pumping the grout mixture as the MTBM is extracted from the hole. The rate at which the MTBM is extracted during grouting operations will be regulated to match the rate of grout placement.

11 REFERENCES

Federal Energy Regulatory Commission (FERC). 2019. Guidance for Horizontal Directional Drill Monitoring, Inadvertent Return Response, and Contingency Plans. October 2019. Available at: <https://www.ferc.gov/natural-gas/environmental-overview/guidance-horizontal-directional-drill-monitoring-inadvertent-return-response-and-contingency-plans>. Accessed October 2020.

Pennsylvania American Water. 2021. 2021 Water Quality Report; Source Water Information. Available at: <https://www.amwater.com/ccr/nesbitthuntsville.pdf>. Accessed June 10, 2022.



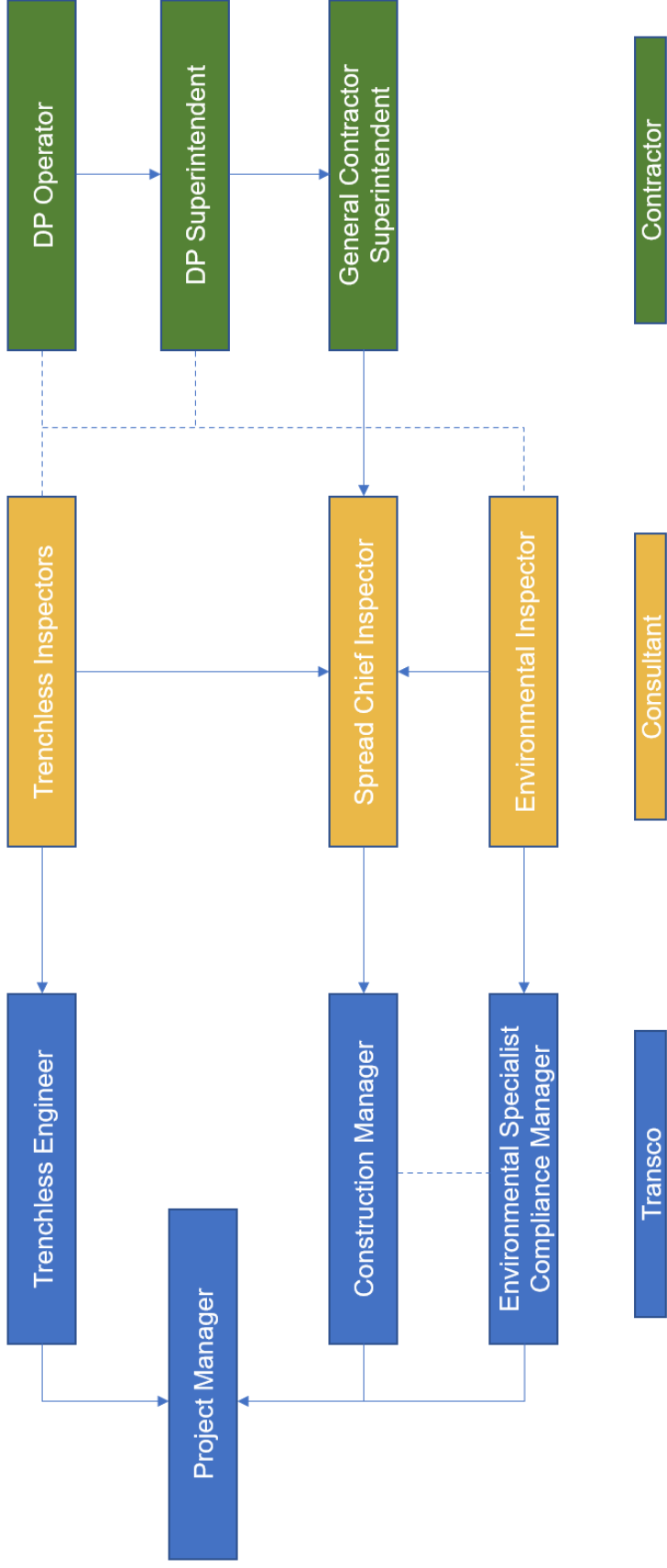
Transcontinental Gas Pipe Line Company, LLC

**Direct Pipe® Monitoring,
Inadvertent Return Response, and Contingency Plan
Appendix A Direct Pipe® Organizational Chart**

Regional Energy Access Expansion

July 2022

Regional Energy Access Expansion Direct Pipe Oversight Plan



Reports To

Communicates With



Transcontinental Gas Pipe Line Company, LLC

**Direct Pipe® Monitoring,
Inadvertent Return Response, and Contingency Plan
Appendix B Direct Pipe® Design Reports**

Regional Energy Access Expansion

July 2022

The design reports are included in Requirement S
- Alternative Analysis of the Regional Energy
Lateral Joint Permit Application.



Transcontinental Gas Pipe Line Company, LLC

**Direct Pipe® Monitoring,
Inadvertent Return Response, and Contingency Plan
Appendix C Drilling Fluids List and SDS**

Regional Energy Access Expansion

July 2022

The drilling fluids list and safety data sheets will be included with the plan once a contractor is selected.



Transcontinental Gas Pipe Line Company, LLC

**Direct Pipe® Monitoring,
Inadvertent Return Response, and Contingency Plan**

Appendix D Disposal Tracking Log

Regional Energy Access Expansion

July 2022

The Disposal Tracking Log will be managed
and updated during construction.



Transcontinental Gas Pipe Line Company, LLC

**Direct Pipe® Monitoring,
Inadvertent Return Response, and Contingency Plan
Appendix E Publicly Available Water Supply Information**

Regional Energy Access Expansion

July 2022

This page is intentionally blank.


pennsylvania
 DEPARTMENT OF ENVIRONMENTAL PROTECTION
eMapPA

Layers Legend Tasks

► Buffer a Layer

▼ Buffer Sensitive Layer (Data Only)

Buffer a
 Point Polyline Polygon

Enter buffer distance
 Miles

Layer to buffer
 Groundwater Wells

► Extract Data

► Locate

► Measurement

► Print

Map eFacts Query Advanced Query

ESRI Streets & Imagery Topographic National Geographic

Streets Imagery



0 features in buffer.

PWS_ID	SYSTEM_NAME	AREA_CITY	RESPONSIBLE_OFFICIER



pennsylvania
DEPARTMENT OF ENVIRONMENTAL
PROTECTION

eMapPA

Layers Legend Tasks

► Buffer a Layer

▼ Buffer Sensitive Layer (Data Only)

Buffer a
 Point Polyline Polygon

Enter buffer distance
0.5 Miles

Layer to buffer
Surface Water Intakes

Create Buffer Clear

► Extract Data

► Locate

► Measurement

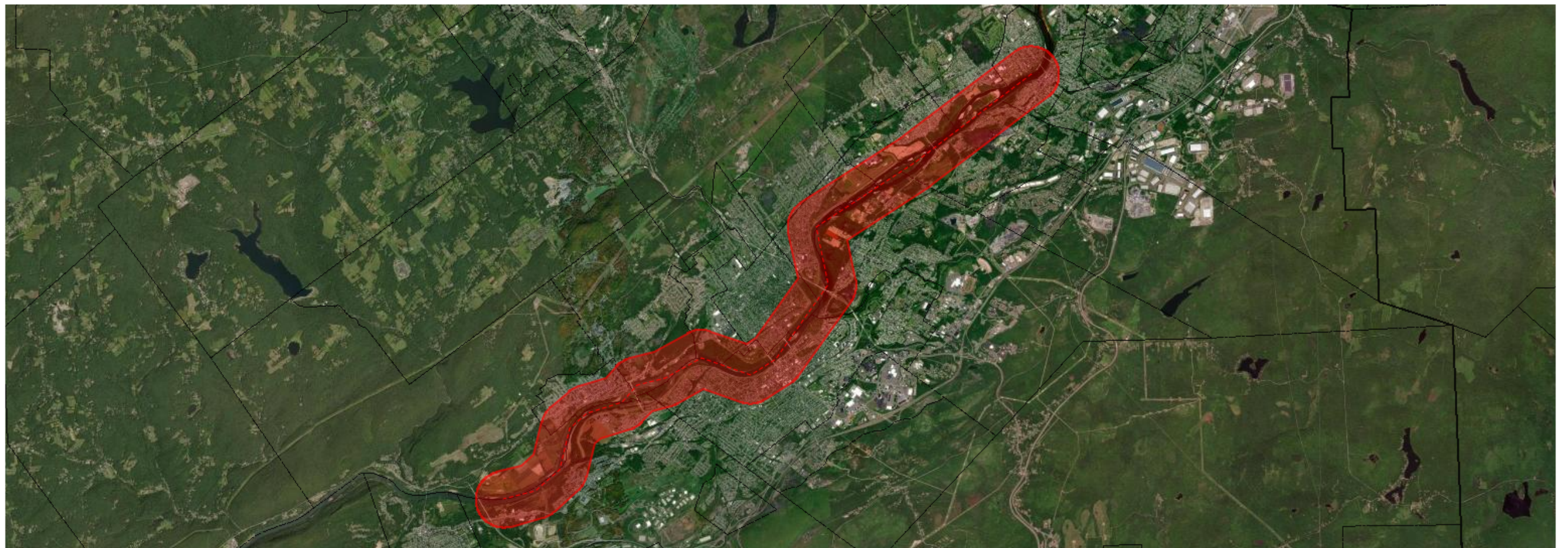
► Print

Map eFacts Query Advanced Query

ESRI Streets & Imagery Topographic National Geographic

Streets Imagery

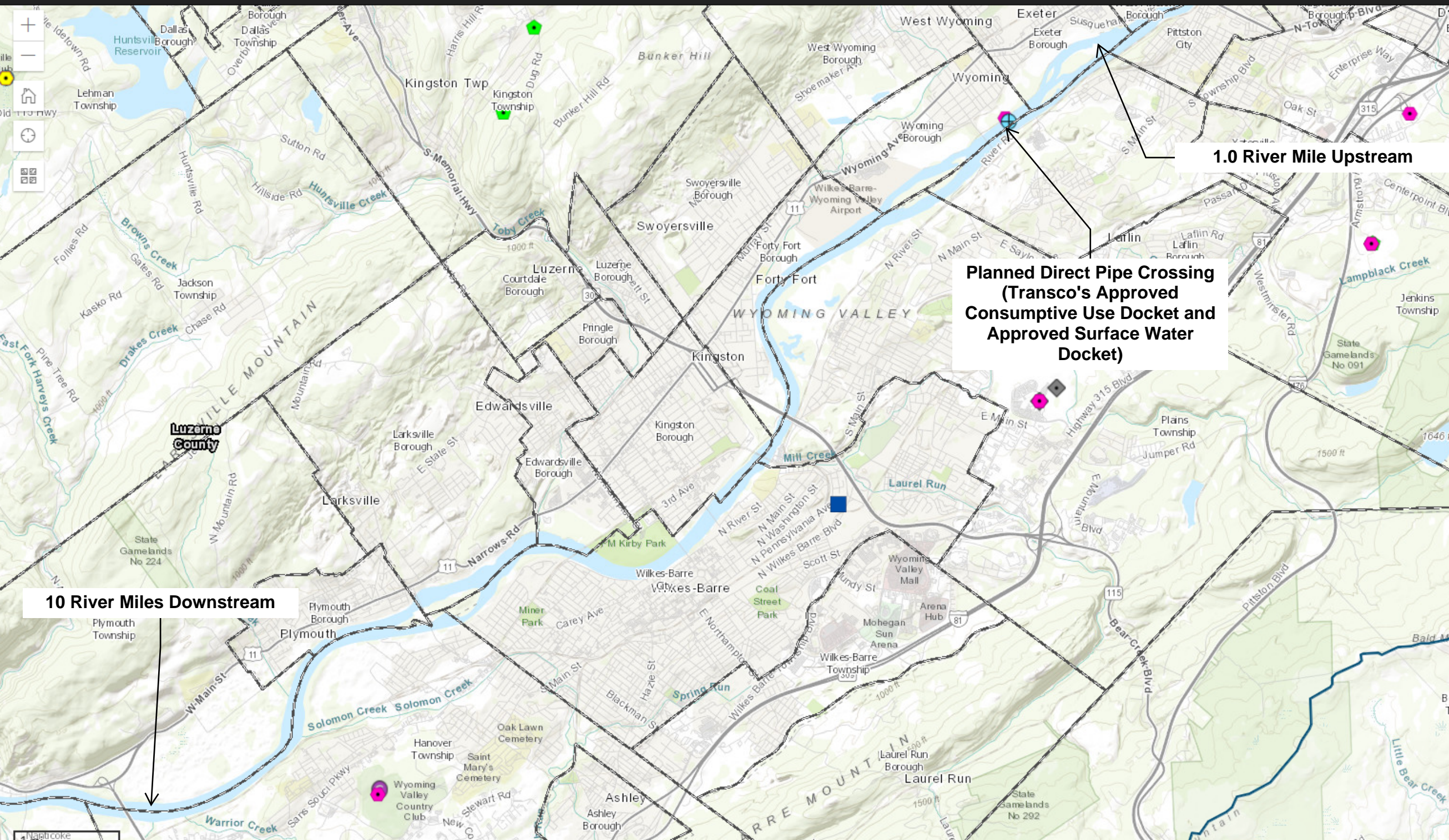
Map navigation tools: zoom in, zoom out, home, pan, measure, info, print



0 features in buffer. Export all to CSV X

PWS_ID	SYSTEM_NAME	AREA_CITY	RESPONSIBLE_OFFICER





1.0 River Mile Upstream

Planned Direct Pipe Crossing (Transco's Approved Consumptive Use Docket and Approved Surface Water Docket)

10 River Miles Downstream

Tools

Search Zoom Clear

SRBC Projects

Notice of Intent (NOI) Application (ABRf)
 ▲ Pending CU - Gas Pad

Pending Docket / ABRe
 ● Pending Withdrawal or Consumptive Use

Approved Consumptive Use Docket
 ● Consumptive Use

Approved Surface Water Docket
 ⊕ Withdrawal

Approved Groundwater Docket
 ▲ Withdrawal

Approval By Rule (ABRf)
 ■ Approved CU - Gas Pad

Approval By Rule (ABRe)
 ■ Approved CU - Non-Gas

Diversion
 ➡ Into Basin or Out of Basin

Grandfathered Certificate of Registration
 ● Grandfathered Water Use

Other
 ◆ Non-categorized

Reference Layers

Political Boundaries
 □ State
 □ County

Wells Springs

Data Packages: General Info Site Info Well Construction Hydrogeologic Geologic

ZIP/city/address...

Go

40

-79

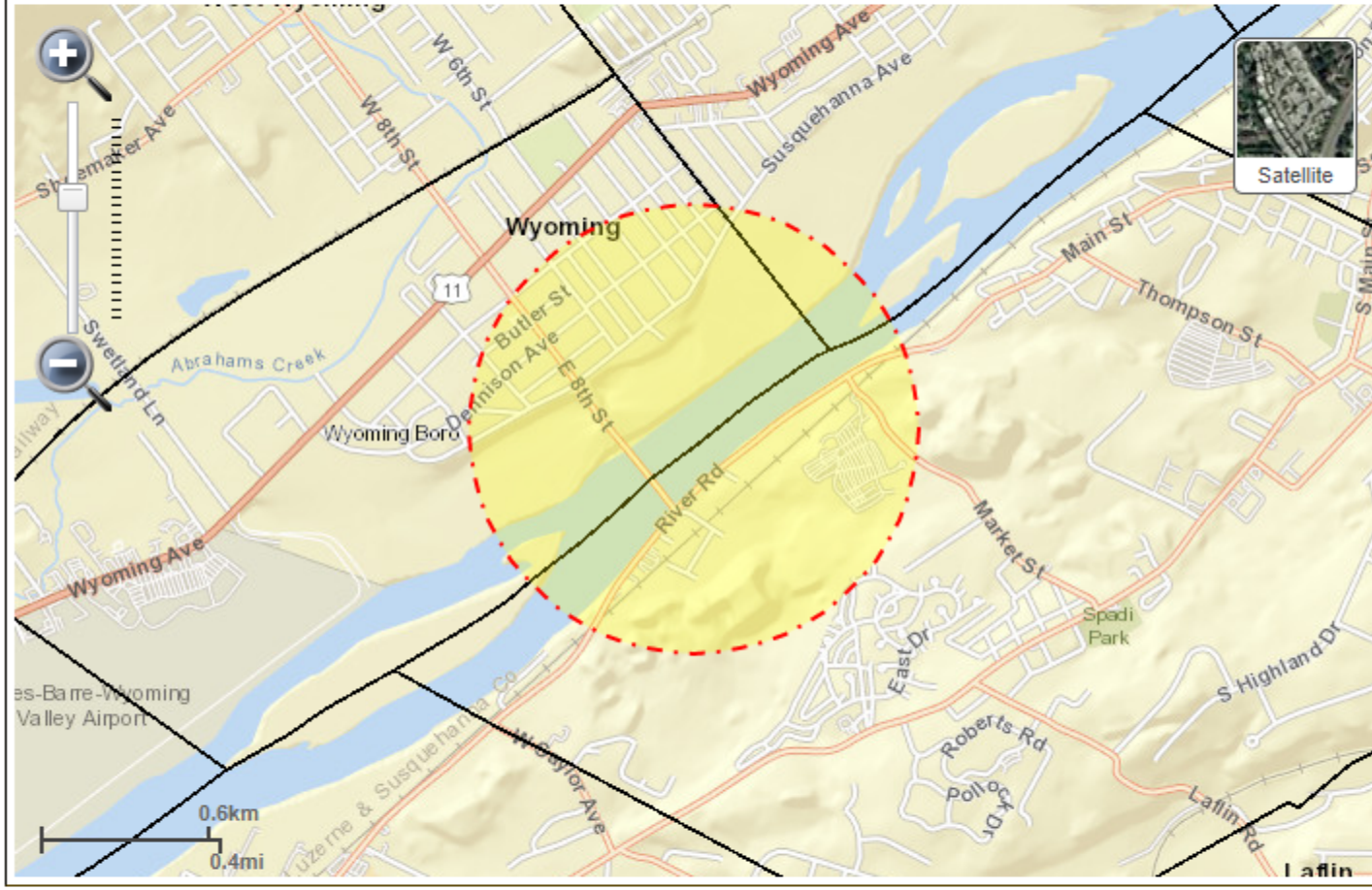
Jump to Point

39.000, -78.683



Include unlocated wells within intersected municipalities

[Explain](#)



[Download Data Package](#)

[Clear Selections](#)

[Contact Us](#)

'Download Data Package' creates a data package-specific CSV file that you may open or download. If you choose to open the file, it may open in Excel (if you have Microsoft Office installed). Because of the relational nature of the database, there may be more than 1 line per well in the downloaded data. For data on public water supply wells, or water quality data, please see instructions.

[Instructions](#)

Total Records To Download : 0 Records

PaGWIS Map Search

You must be zoomed to the level where municipality names appear to search.

Multiple Criteria Map

Wells Springs

Data Packages: General Info Site Info Well Construction Hydrogeologic Geologic

ZIP/city/address...

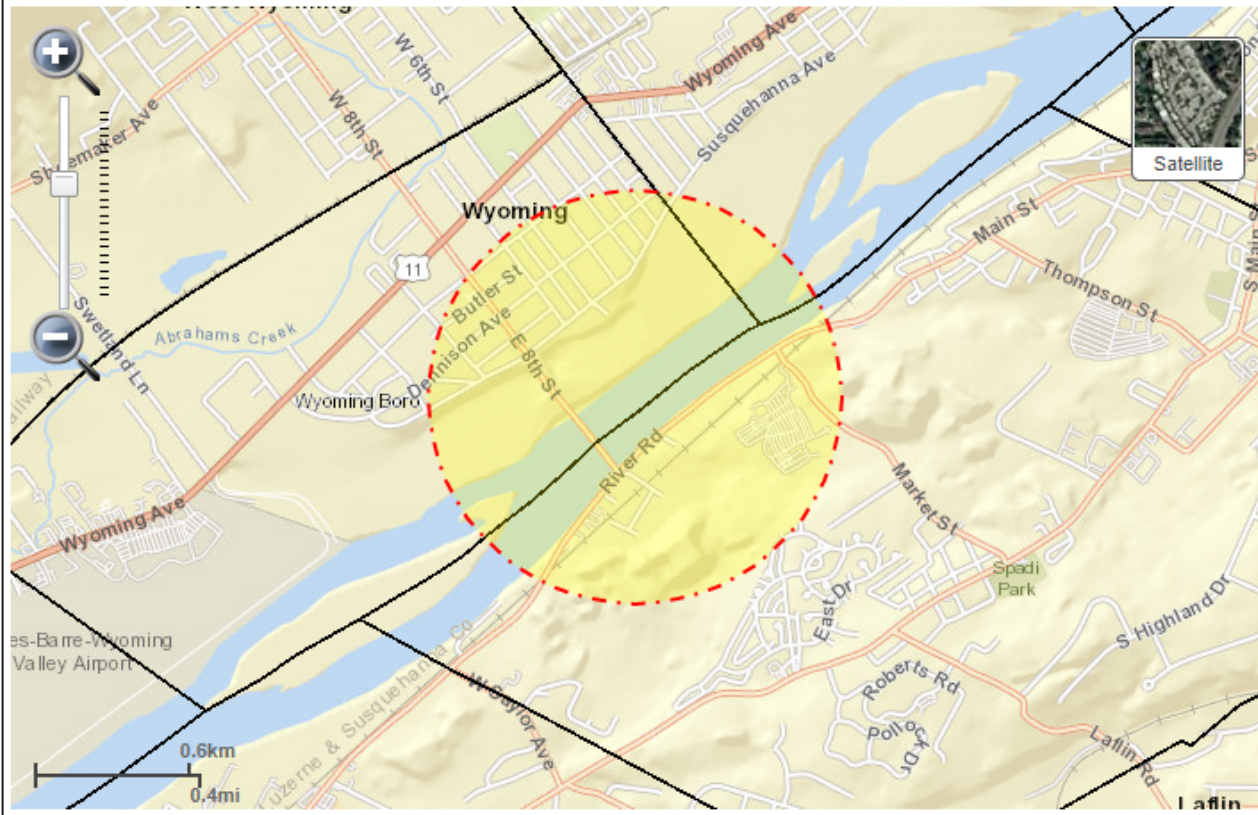
Go

40

-79

Jump to Point

39.188, -77.134



[Download Data Package](#)

[Clear Selections](#)

[Contact Us](#)

'Download Data Package' creates a data package-specific CSV file that you may open or download. If you choose to open the file, it may open in Excel (if you have Microsoft Office installed). Because of the relational nature of the database, there may be more than 1 line per well in the downloaded data. For data on public water supply wells, or water quality data, please see instructions.

[Instructions](#)

Total Records To Download : 0 Records



Transcontinental Gas Pipe Line Company, LLC

**Direct Pipe® Monitoring,
Inadvertent Return Response, and Contingency Plan
Appendix F Landowner Letter Template**

Regional Energy Access Expansion

July 2022

This page is intentionally blank.



WE MAKE CLEAN ENERGY HAPPEN®

PO Box 1789

Plains, Pennsylvania 18705

VIA FEDERAL EXPRESS

June 22, 2022

Re: Proposed Regional Energy Access Expansion Project (Project)
Federal Energy Regulatory Commission (FERC) Docket Number CP21-94
Transcontinental Gas Pipe Line Company, LLC
Parcel ID:

To Whom It May Concern,

The Williams Companies, Inc. (Williams) owns and operates an interstate natural gas transmission pipeline system known as Transcontinental Gas Pipe Line Company, LLC (Transco), which transports natural gas from production areas to customers such as utility companies and power plants located throughout the northeastern and southeastern United States. As a part of its proposed Project on the Transco system, Williams intends to cross underneath the Susquehanna River by means of a Direct Pipe® (DP) construction technique, a single pass horizontal directional drilling construction method. Williams is sending this letter to inform you that its proposed DP installation is located within 450 feet of your property boundary. DP activities include construction site work to set-up DP equipment and operations (e.g., tree felling, grading, erosion and sediment controls), and tunnelling and pipe thrusting activities.

The purpose of this letter is to determine if you own a nearby well or water supply. If so, your interests will be served by allowing us to collect well construction and operation information from you, as well as flow rate, water level and water quality data from your well prior to the DP activity. If you agree we ask that you complete, to the best of your ability, the attached questionnaire, and authorize us to access your property for the purpose of locating your well with GPS and performing well testing and sampling.

Your voluntary cooperation would allow us to detect effects on your well from the DP activity, if any, and to recommend mitigating and/or corrective measures as may be appropriate. Our methods simply involve reviewing the questionnaire, corresponding with you, and then visiting the property for the purpose of locating the well with GPS, and recording the water level and flow rate of your well while pumping the well for 30 minutes (i.e., a specific capacity test). We also would collect water samples for water quality analysis. The work and the results will be provided at no cost to you. Data also will be made available to the Pennsylvania Department of Environmental Protection.

OWNER QUESTIONNAIRE AND WELL DETAILS DP PROJECT: Regional Energy Access Expansion

OWNER / TENANT INFORMATION	
Owner Name _____	Mailing Address _____
Business/Facility Name _____	City _____ State _____ Zip _____
Premises Address _____	Is this a Primary Residence (Y/N)? Is this a Rental Unit (Y/N)?
City _____ State _____ Zip _____	Tenant Name _____
Day Phone _____ Evening Phone _____	Tenant Phone _____
Owner Email _____	Tenant Email _____

WELL CONSTRUCTION INFORMATION (please provide details to best of your ability and leave unknowns blank)	
Location Details (e.g. front of house, etc.) _____	GPS Coordinates _____ Lat _____ Long _____
_____	Well Depth (feet) _____ Well Diameter (inches) _____
Construction Date _____	Casing Type (circle): Concrete, Plastic, Steel, Other _____
Use for Water (circle): Residential, Irrigation / Livestock, Industrial, Public Supply, Monitoring, Geothermal, Dewatering, Other _____	Casing Depth (feet) _____ Was Well Grouted (Y/N) _____
Install Method (circle): Hand Dug, Bored / Augered, Cable, Air Percussion, Other _____	Screen Finish (circle): Steel, Plastic, Open Hole, Other _____
Is This a Replacement Well (Y/N)?	Screen from top _____ (feet) to bottom _____ (feet)
_____	Water Bearing Zone(s) _____ (feet) _____ (feet) _____ (feet)
_____	Well Blown Yield (gallons per minute) _____
_____	Unsuccessful Drilling Attempts (Y/N)? If Yes (quantity) _____

QUESTIONNAIRE (please provide details)

- When was the last time the well / spring had work completed on it (date and reason)?
- Was the well / spring pump ever replaced (date and reason)?
- Have you ever had water quality problems (when, what were they, how were they fixed)?
- Have you had problems with yield (when, what were they, how were they fixed)?
- Have you ever had problems with your well or water during a drought?
- Does your water change color when it rains?
- Do you ever smell anything odd from your water or your well?
- Is your water conditioned or treated (type, location)? Is there point-of-use treatment (type, location)?
- Is there an outdoor water sampling tap (type, location)?
- Is there a septic system and where is the septic system in relation to the well / spring / building / facility?
- Check if applicable regarding on-site well (a check YES may mean well is inaccessible for GPS or water level measurements):
 - Located where an un-tethered dog has access
 - Well is buried underground or located in a basement, pit, or other area with limited access
 - Excessive rust is on the outside or inside of the well casing
 - Well casing is less than 6 inches in diameter
 - Well cap is welded shut or cap has rubber, caulking or other material watertight seal
 - Well cap bolts are rusted shut or broken off the well head
 - Well cap is loose or completely off the casing
 - Inside the well, there are open, broken or frayed wires
 - Excessive rusting or material that may be knocked loose into the well is inside the well casing
 - Other (e.g. insects / nests) _____



Transcontinental Gas Pipe Line Company, LLC

Direct Pipe® Monitoring,

Inadvertent Return Response, and Contingency Plan

Appendix G Landowner Private Water Supply Correspondence

Regional Energy Access Expansion

July 2022

Transco requests that the Landowner
Private Water Supply Correspondence be
accorded privileged treatment, and that it be
placed in a non-public file.