



**Transcontinental Gas Pipe Line Company, LLC**

**Section 1-5 – Project Location Maps**

**Regional Energy Access Expansion Project**

**April 2021**  
*(Revised March 2022)*

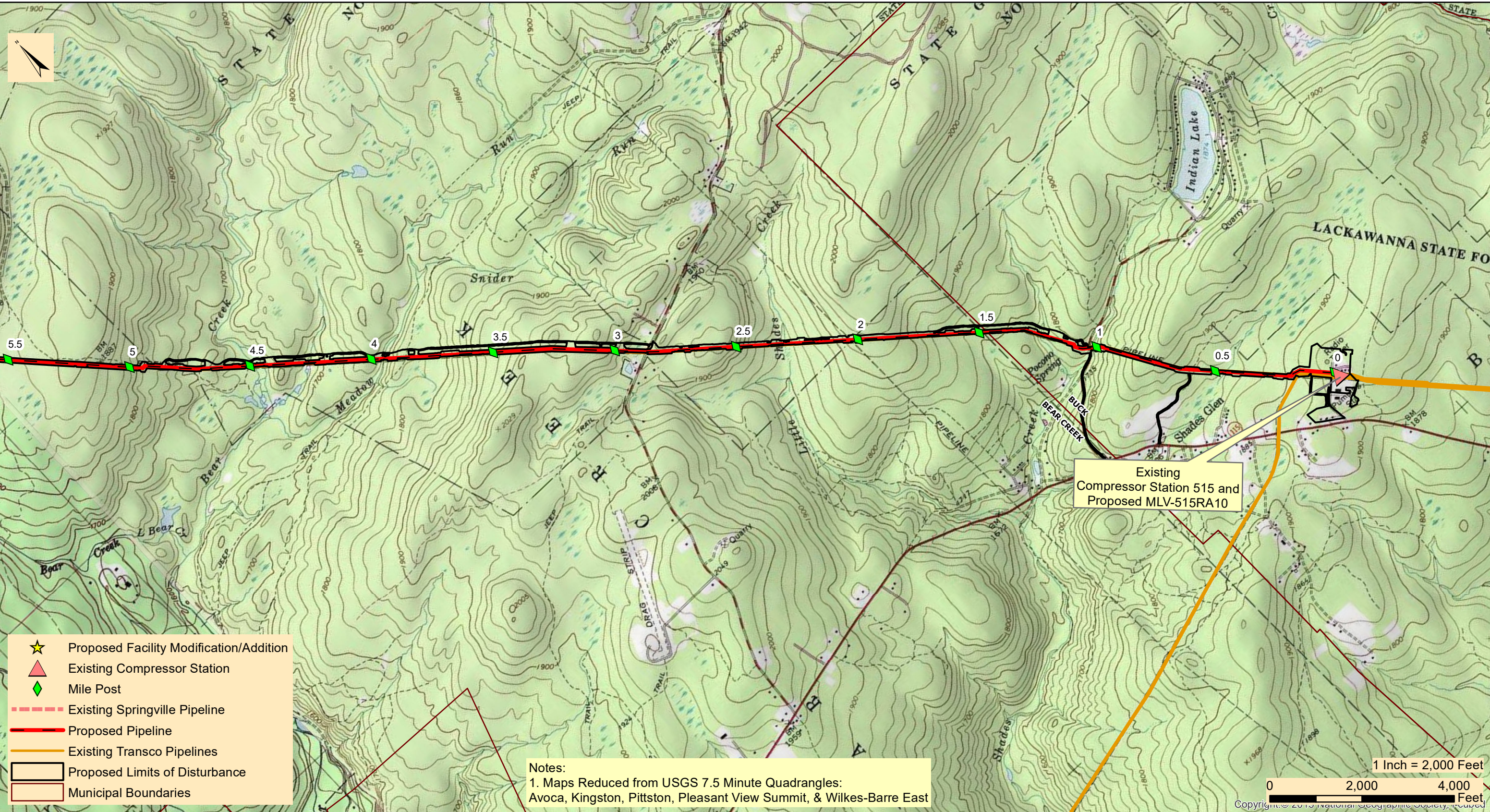
**TABLE OF CONTENTS**

**Section 1-5**

- 1.5.1 Regional Energy Lateral
- 1.5.2 Effort Loop
- 1.5.3 Compressor Station 200
- 1.5.4 Compressor Station 515
- 1.5.5 Delaware River Regulator
- 1.5.6 Mainline A Regulator

**SECTION 1.5.1**  
**REGIONAL ENERGY LATERAL**

M:\GIS\PROJECTS\REGIONAL\_ENERGY\_ACCESS\PROJECT LOCATION MAPPING\REVISED\_MAPPING\_APRIL\_2020\REA\_RegionalEnergy\Lateral\_ProjectLocation071620.mxd



- ★ Proposed Facility Modification/Addition
- ▲ Existing Compressor Station
- ◆ Mile Post
- Existing Springville Pipeline
- Proposed Pipeline
- Existing Transco Pipelines
- ▭ Proposed Limits of Disturbance
- ▭ Municipal Boundaries

Notes:  
 1. Maps Reduced from USGS 7.5 Minute Quadrangles:  
 Avoca, Kingston, Pittston, Pleasant View Summit, & Wilkes-Barre East

Existing  
 Compressor Station 515 and  
 Proposed MLV-515RA10

1 Inch = 2,000 Feet  
 0 2,000 4,000 Feet  
 Copyright © 2019 National Geographic Society, Inc.



**TRANSCONTINENTAL GAS PIPE LINE COMPANY, LLC**  
**REGIONAL ENERGY ACCESS EXPANSION PROJECT**  
**PROPOSED 30" REGIONAL ENERGY LATERAL**  
**PROJECT LOCATION MAP**

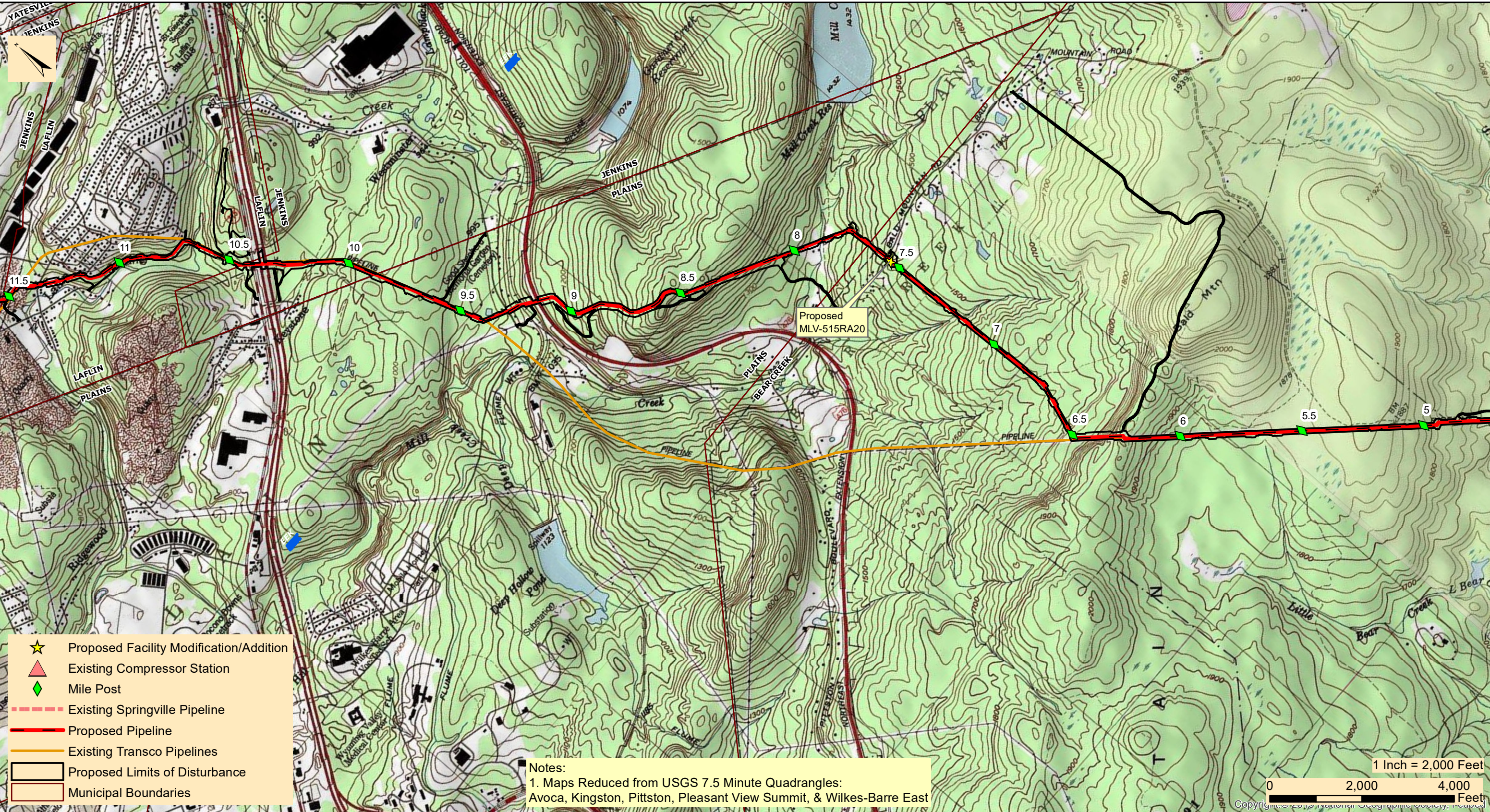
BUCK & BEAR CREEK TOWNSHIPS

LUZERNE COUNTY

PENNSYLVANIA

Date:	2/28/2022
Drawn By:	FTN
Figure Number:	REL-1

M:\GIS\PROJECTS\REGIONAL\_ENERGY\_ACCESS\PROJECT\_LOCATION\_MAPPING\REVISED\_MAPPING\_APRIL\_2020\REA\_RegionalEnergy\Lateral\_Project\_Location071620.mxd



- ★ Proposed Facility Modification/Addition
- ▲ Existing Compressor Station
- ◆ Mile Post
- - - Existing Springville Pipeline
- Proposed Pipeline
- Existing Transco Pipelines
- Proposed Limits of Disturbance
- Municipal Boundaries

Notes:  
 1. Maps Reduced from USGS 7.5 Minute Quadrangles:  
 Avoca, Kingston, Pittston, Pleasant View Summit, & Wilkes-Barre East

1 Inch = 2,000 Feet  
 0 2,000 4,000 Feet  
 Copyright © 2019 National Geographic Society. Reprinted



**TRANSCONTINENTAL GAS PIPE LINE COMPANY, LLC**  
**REGIONAL ENERGY ACCESS EXPANSION PROJECT**  
**PROPOSED 30" REGIONAL ENERGY LATERAL**  
**PROJECT LOCATION MAP**

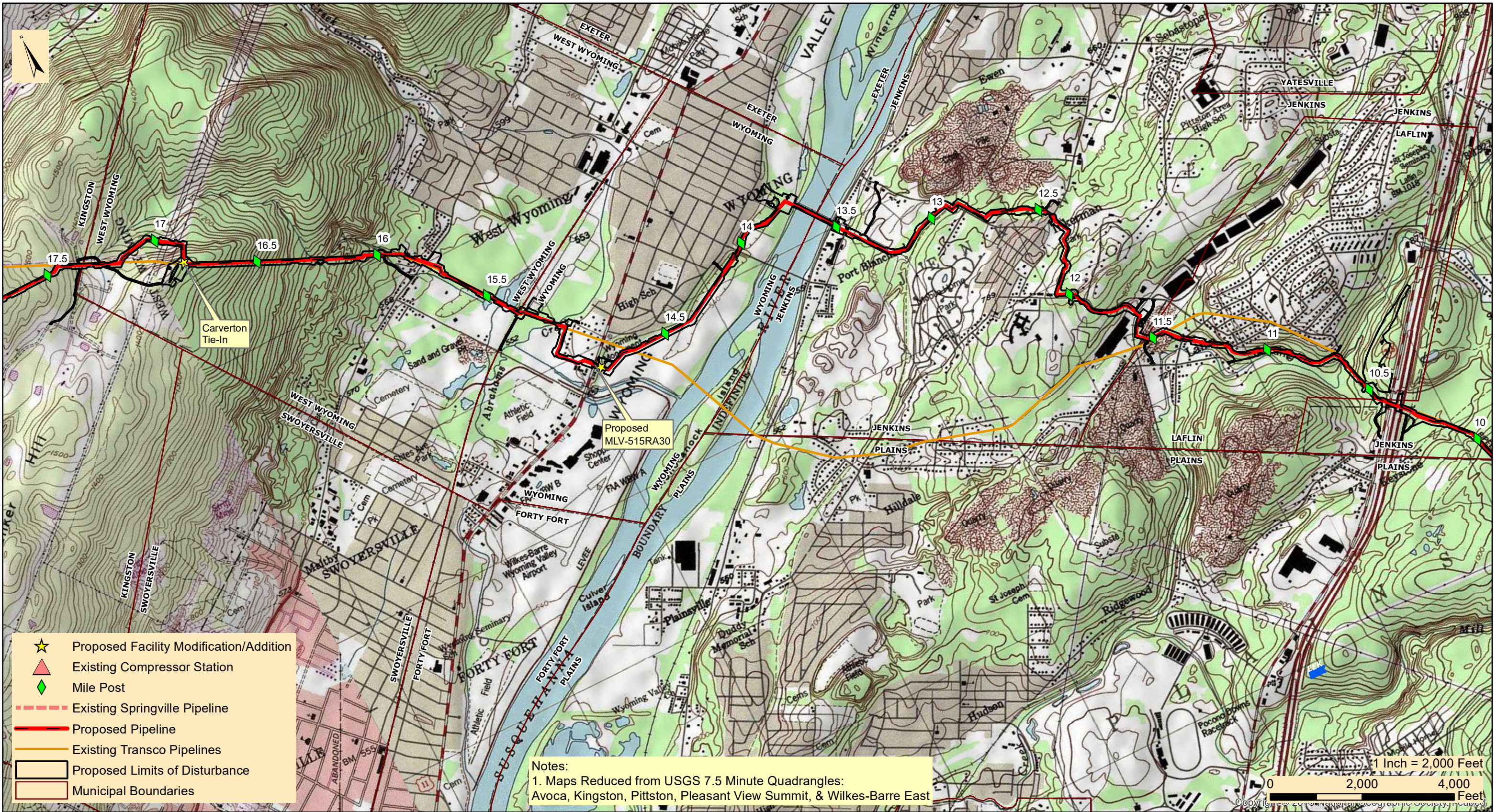
BEAR CREEK, JENKINS, PLAINS TWP, & LAFLIN BOROUGH

LUZERNE COUNTY

PENNSYLVANIA

Date:	2/28/2022
Drawn By:	FTN
Figure Number:	REL-2

M:\GIS\PROJECTS\REGIONAL\_ENERGY\_ACCESS\PROJECT\_LOCATION\_MAPPING\REVISED\_MAPPING\_APRIL\_2020\REA\_RegionalEnergy\_Lateral\_Project\_Location071620.mxd



Notes:  
 1. Maps Reduced from USGS 7.5 Minute Quadrangles:  
 Avoca, Kingston, Pittston, Pleasant View Summit, & Wilkes-Barre East



**TRANSCONTINENTAL GAS PIPE LINE COMPANY, LLC**  
**REGIONAL ENERGY ACCESS EXPANSION PROJECT**  
**PROPOSED 30" REGIONAL ENERGY LATERAL**  
**PROJECT LOCATION MAP**

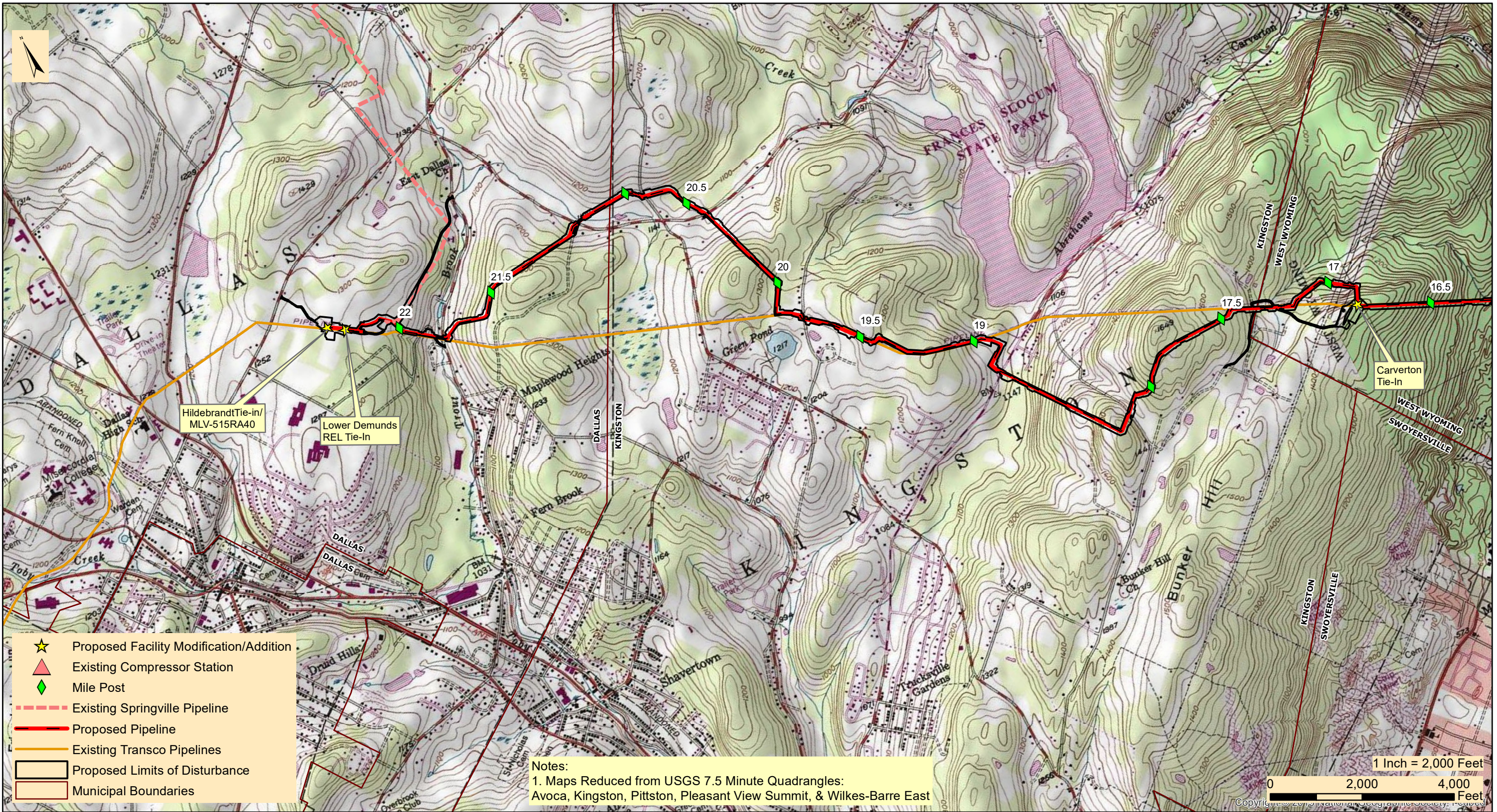
KINGSTON, JENKINS, WEST WYOMING, WYOMING, & LAFLIN

LUZERNE COUNTY

PENNSYLVANIA

Date:	2/28/2022
Drawn By:	FTN
Figure Number:	REL-3

M:\GIS\PROJECTS\REGIONAL\_ENERGY\_ACCESS\PROJECT\_LOCATION\_MAPPING\REVISED\_MAPPING\_APRIL\_2020\REA\_RegionalEnergy\Lateral\_Project\_Location071620.mxd



- ★ Proposed Facility Modification/Addition
- ▲ Existing Compressor Station
- ◆ Mile Post
- Existing Springville Pipeline
- Proposed Pipeline
- Existing Transco Pipelines
- Proposed Limits of Disturbance
- Municipal Boundaries

Notes:  
 1. Maps Reduced from USGS 7.5 Minute Quadrangles:  
 Avoca, Kingston, Pittston, Pleasant View Summit, & Wilkes-Barre East

1 Inch = 2,000 Feet  
 0 2,000 4,000 Feet



**TRANSCONTINENTAL GAS PIPE LINE COMPANY, LLC**  
**REGIONAL ENERGY ACCESS EXPANSION PROJECT**  
**PROPOSED 30" REGIONAL ENERGY LATERAL**  
**PROJECT LOCATION MAP**

DALLAS, KINGSTON, & WEST WYOMING TOWNSHIP

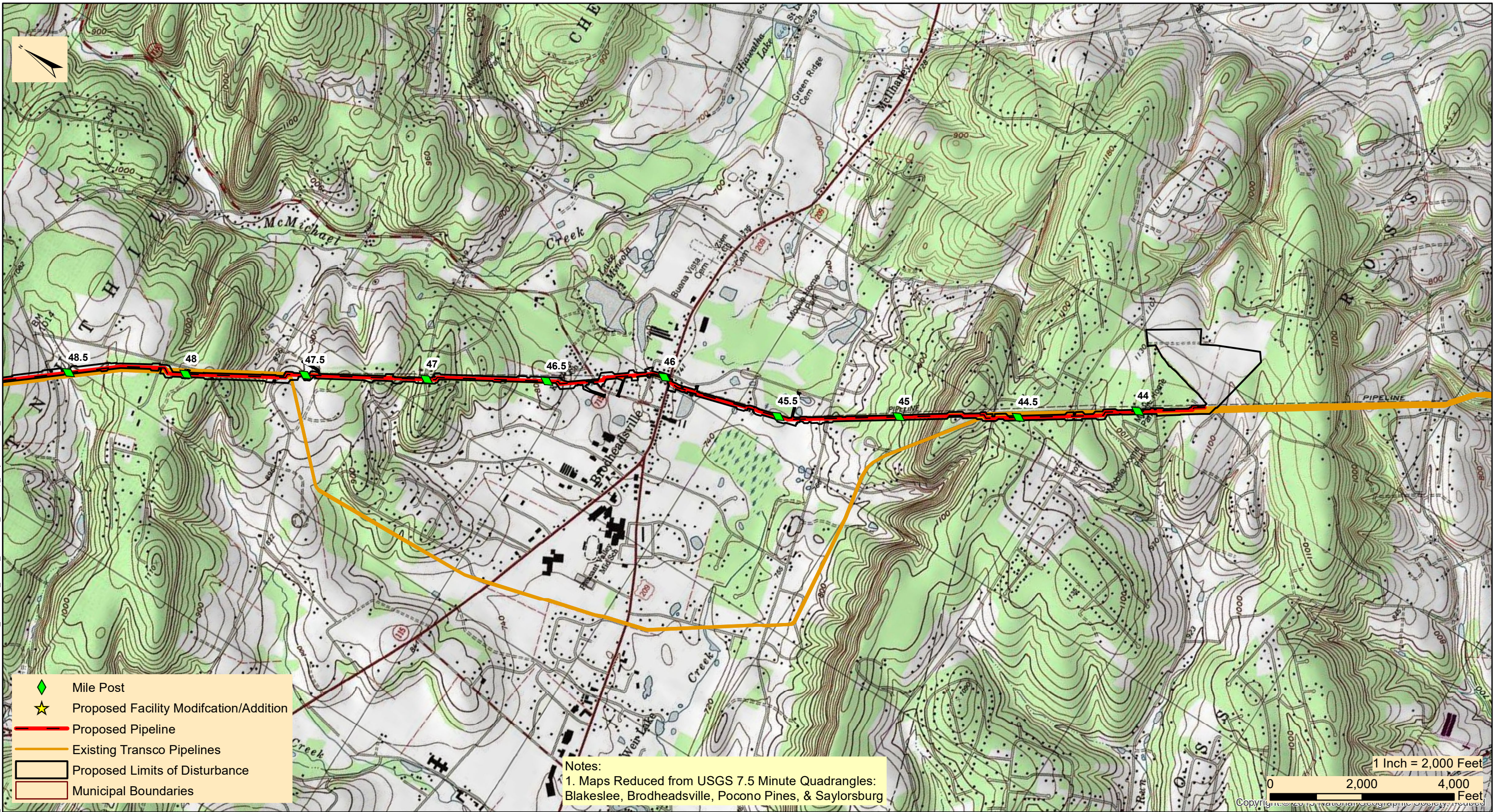
LUZERNE COUNTY

PENNSYLVANIA

Date:	2/28/2022
Drawn By:	FTN
Figure Number:	REL-4

**SECTION 1.5.2**  
**EFFORT LOOP**

M:\GIS\PROJECTS\REGIONAL\_ENERGY\_ACCESS\PROJECT\_LOCATION\_MAPPING\REVISED\_MAPPING\_APRIL\_2020\REA\_EffortLoop\_ProjectLocation\_08262020.mxd



**TRANSCONTINENTAL GAS PIPE LINE COMPANY, LLC**  
**REGIONAL ENERGY ACCESS EXPANSION PROJECT**  
**PROPOSED 42" LEIDY D EFFORT LOOP**  
**PROJECT LOCATION MAP**

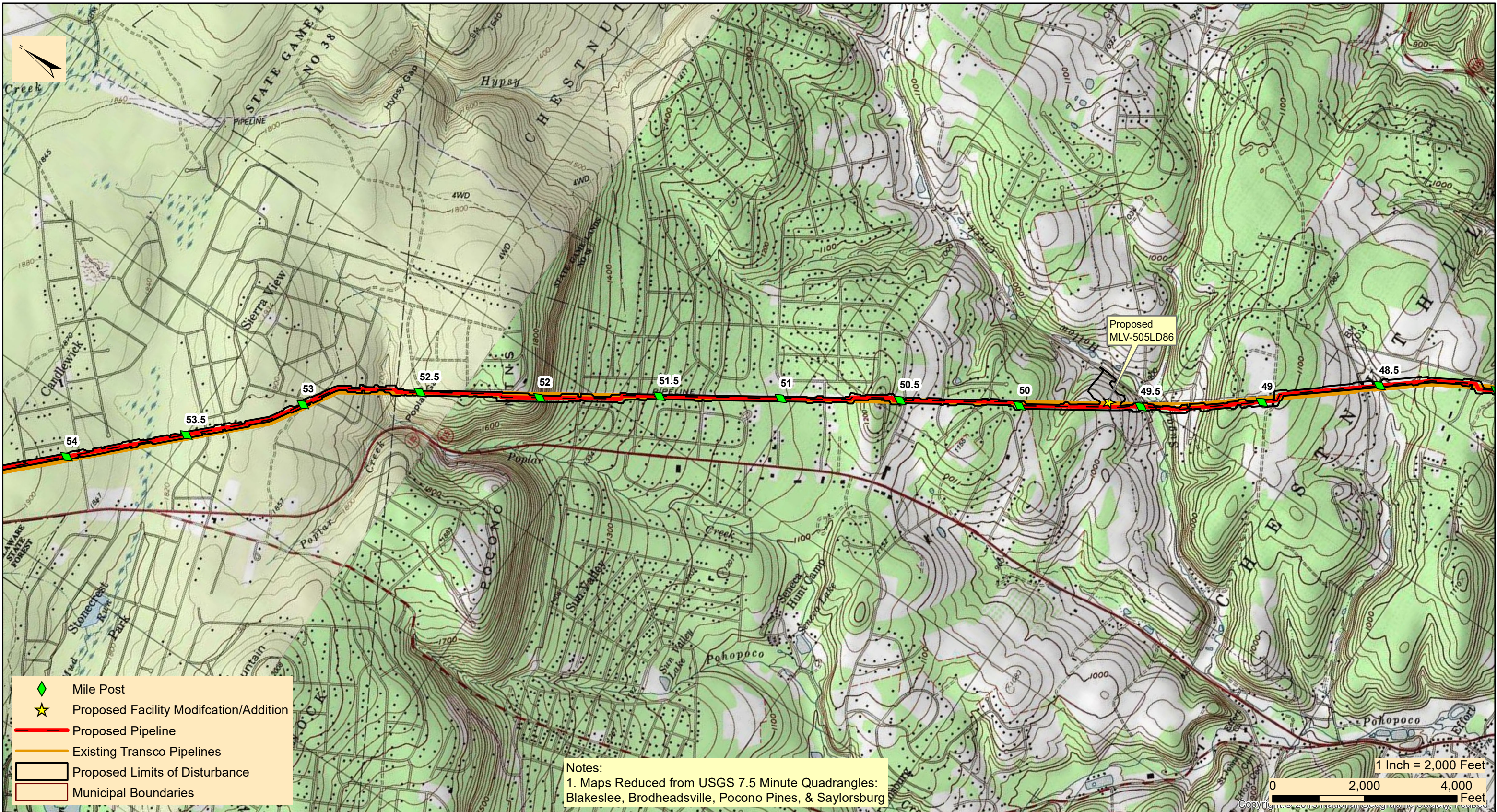
CHESTNUT HILL & ROSS TOWNSHIP

MONROE COUNTY

PENNSYLVANIA

Date:	2/10/2022
Drawn By:	FTN
Figure Number:	EL-1

M:\GIS\PROJECTS\REGIONAL\_ENERGY\_ACCESS\PROJECT\_LOCATION\_MAPPING\REVISED\_MAPPING\_APRIL\_2020\REA\_EffortLoop\_ProjectLocation\_08262020.mxd



- ◆ Mile Post
- ★ Proposed Facility Modification/Addition
- Proposed Pipeline
- Existing Transco Pipelines
- Proposed Limits of Disturbance
- Municipal Boundaries

Notes:  
 1. Maps Reduced from USGS 7.5 Minute Quadrangles:  
 Blakeslee, Brodheads ville, Pocono Pines, & Saylorsburg

1 Inch = 2,000 Feet  
 0 2,000 4,000 Feet  
 Copyright © 2010 National Geographic Society, Inc.



**TRANSCONTINENTAL GAS PIPE LINE COMPANY, LLC**  
**REGIONAL ENERGY ACCESS EXPANSION PROJECT**  
**PROPOSED 42" LEIDY D EFFORT LOOP**

**PROJECT LOCATION MAP**

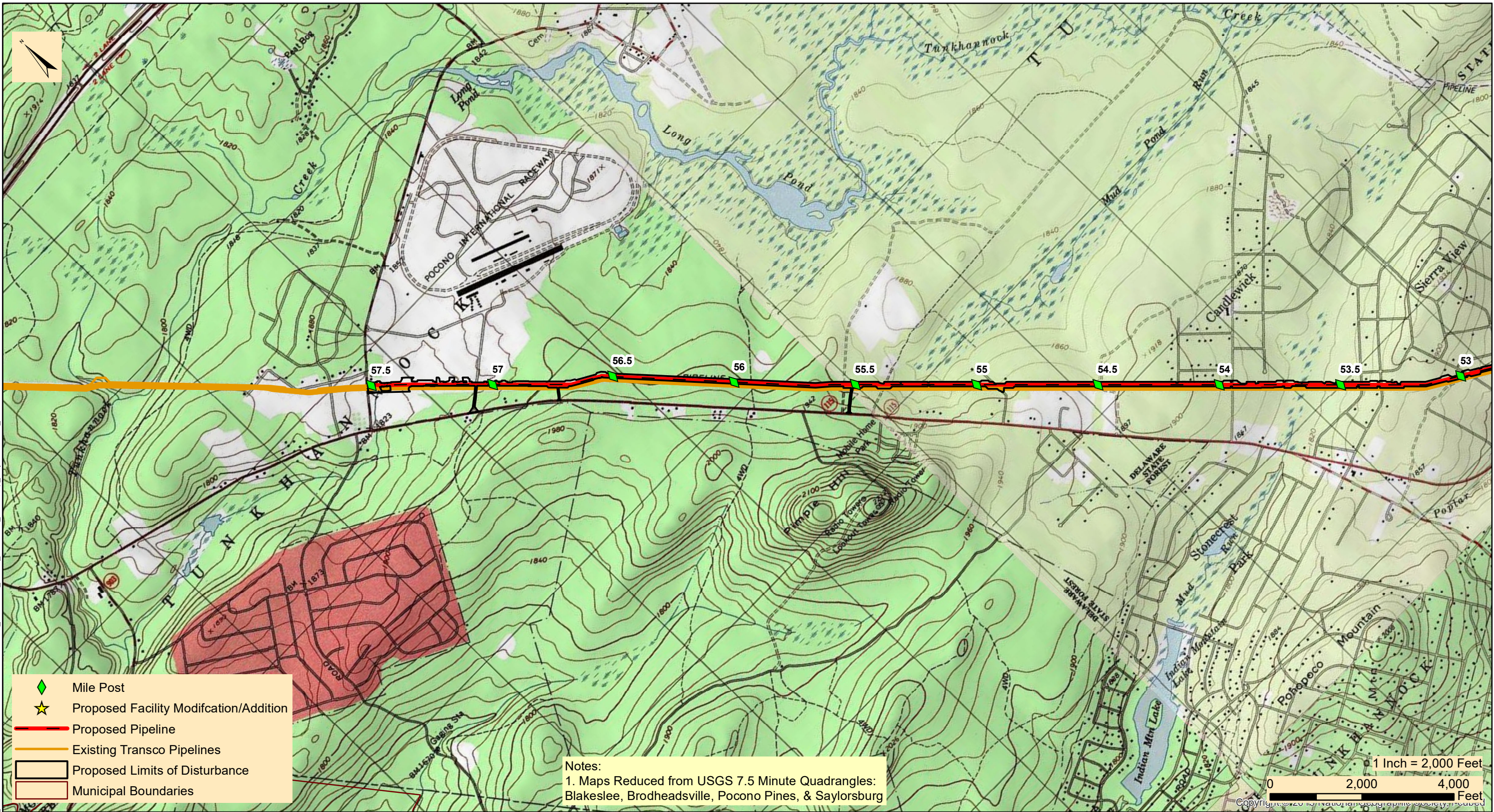
CHESTNUT HILL & TUNKHANNOCK TOWNSHIP

MONROE COUNTY

PENNSYLVANIA

Date:	2/10/2022
Drawn By:	FTN
Figure Number:	EL-2

M:\GIS\PROJECTS\REGIONAL\_ENERGY\_ACCESS\PROJECT\_LOCATION\_MAPPING\REVISED\_MAPPING\_APRIL\_2020\RECA\_EffortLoop\_ProjectLocation\_08262020.mxd



**TRANSCONTINENTAL GAS PIPE LINE COMPANY, LLC**  
**REGIONAL ENERGY ACCESS EXPANSION PROJECT**  
**PROPOSED 42" LEIDY D EFFORT LOOP**  
**PROJECT LOCATION MAP**

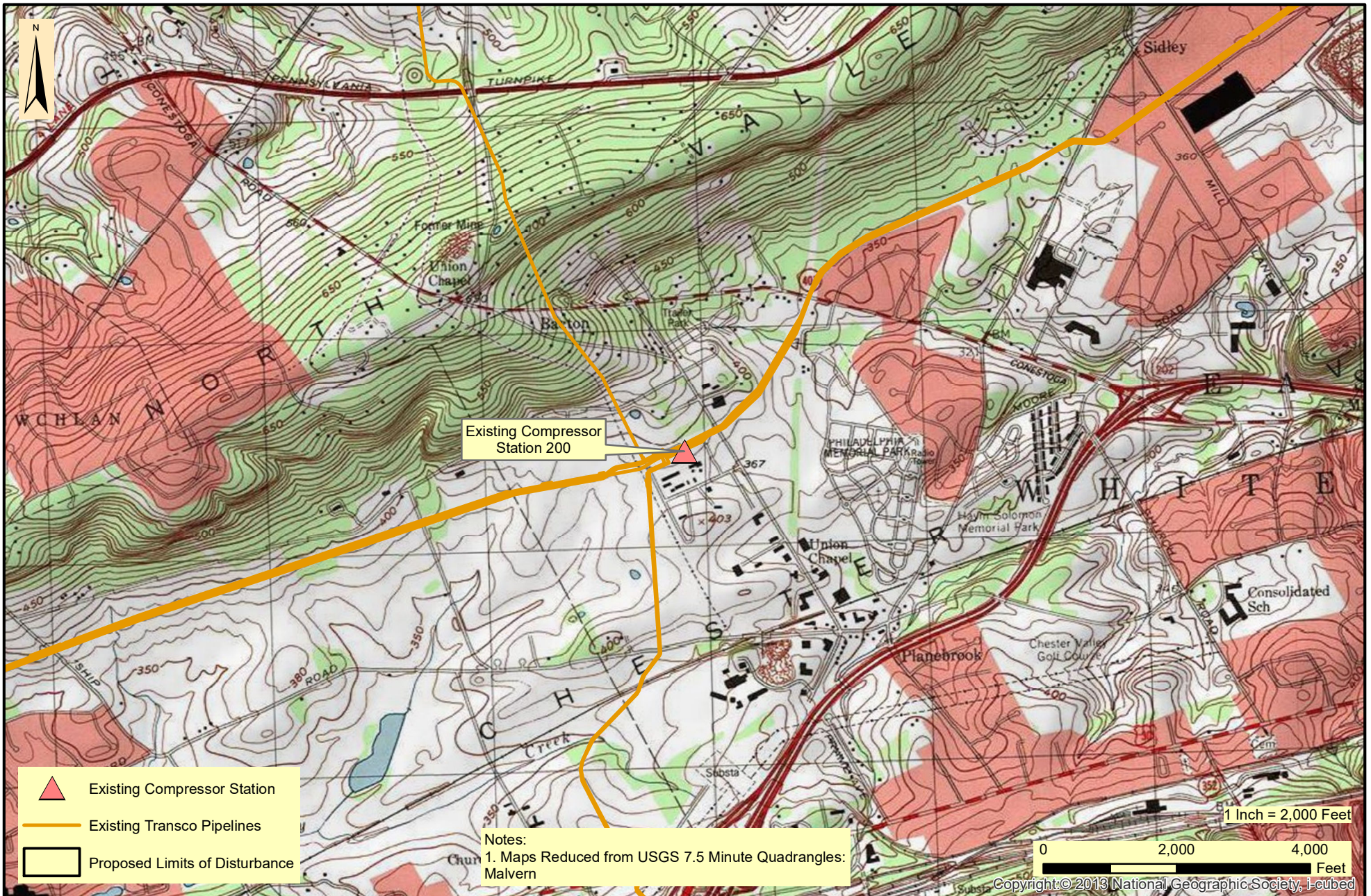
TUNKHANNOCK TOWNSHIP

MONROE COUNTY

PENNSYLVANIA

Date:	2/10/2022
Drawn By:	FTN
Figure Number:	EL-3

**SECTION 1.5.3**  
**COMPRESSOR STATION 200**



**TRANSCONTINENTAL GAS PIPE LINE COMPANY, LLC**  
**REGIONAL ENERGY ACCESS EXPANSION PROJECT**  
**EXISTING COMPRESSOR STATION 200**  
**PROJECT LOCATION MAP**

EAST WHITELAND TOWNSHIP

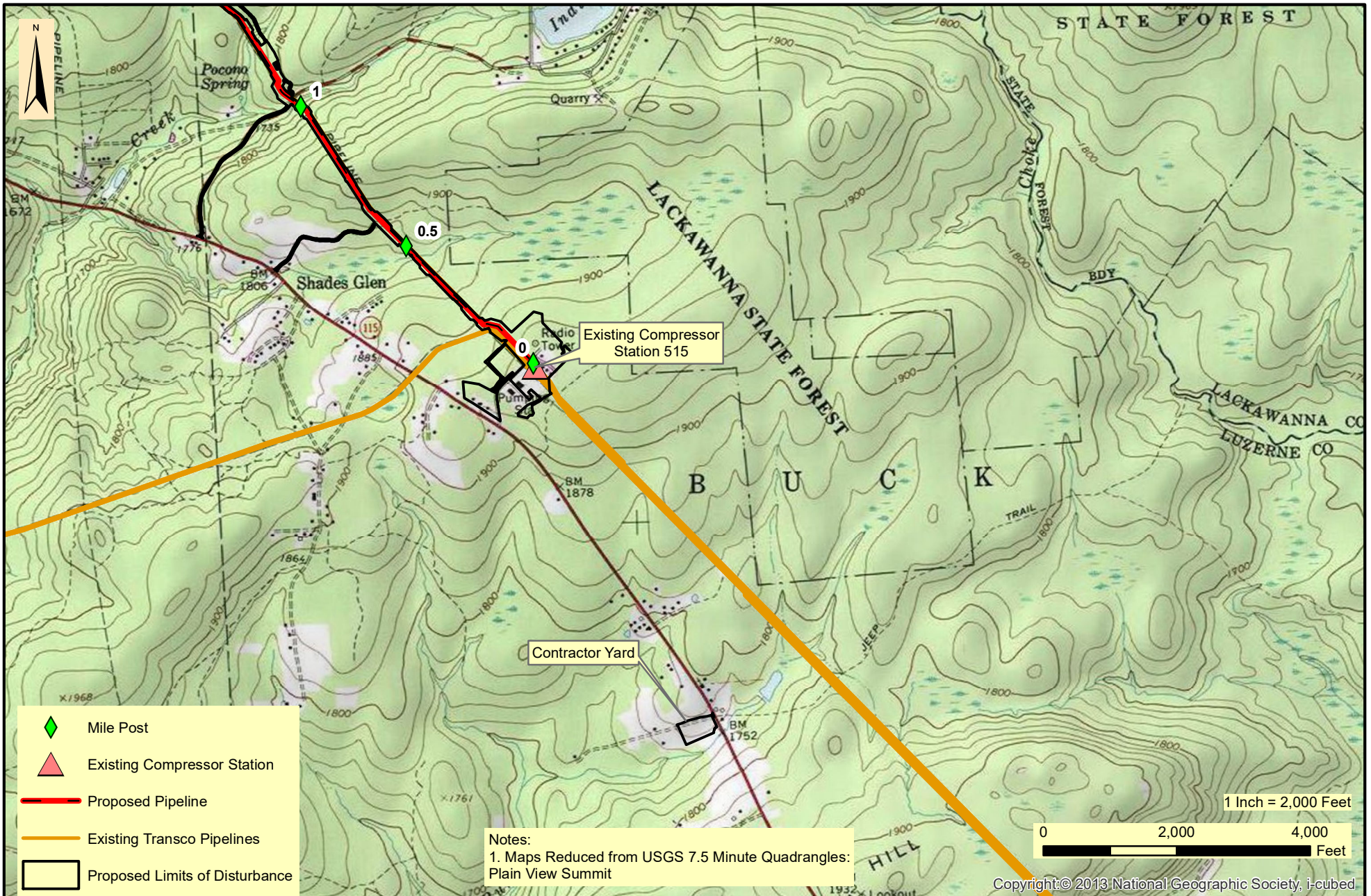
CHESTER COUNTY

PENNSYLVANIA

Date:	2/10/2022
Drawn By:	FTN
Figure Number:	CS200-1

SECTION 1.5.4  
COMPRESSOR STATION 515

M:\GIS\PROJECTS\REGIONAL\_ENERGY\_ACCESS\PROJECT\_LOCATION\_MAPPING\REVISED\_MAPPING\_APRIL\_2020\AREA\_CompressorStation515\_ProjectLocation\_8x11.mxd



**TRANSCONTINENTAL GAS PIPE LINE COMPANY, LLC**  
**REGIONAL ENERGY ACCESS EXPANSION PROJECT**  
**EXISTING COMPRESSOR STATION 515**  
**PROJECT LOCATION MAP**

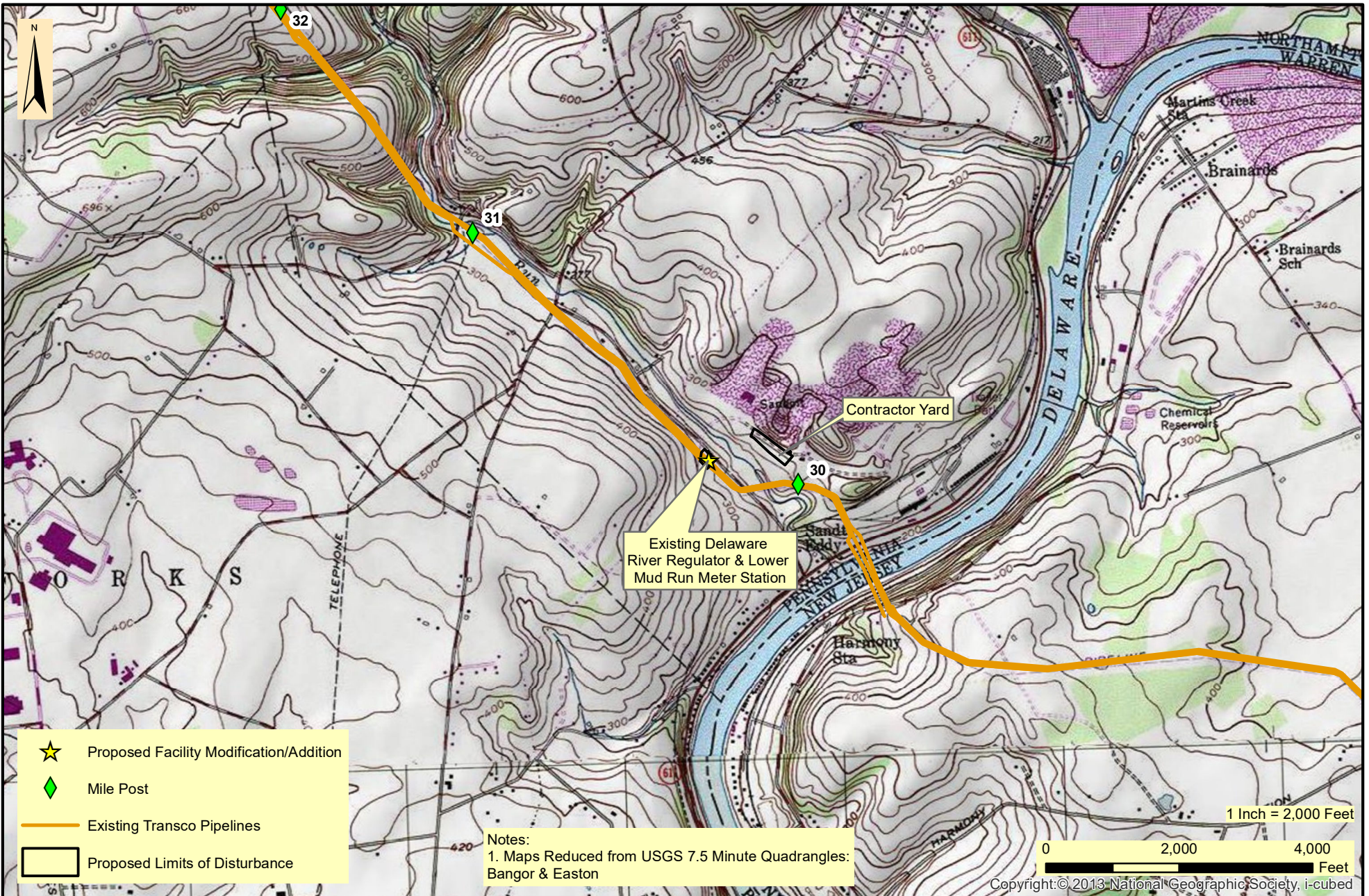
BUCK TOWNSHIP




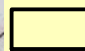
LUZERNE COUNTY

PENNSYLVANIA

Date:	2/10/2022
Drawn By:	FTN
Figure Number:	CS515-1

**SECTION 1.5.5**  
**DELAWARE RIVER REGULATOR**



-  Proposed Facility Modification/Addition
-  Mile Post
-  Existing Transco Pipelines
-  Proposed Limits of Disturbance

Notes:  
 1. Maps Reduced from USGS 7.5 Minute Quadrangles:  
 Bangor & Easton

1 Inch = 2,000 Feet  
 0 2,000 4,000 Feet  
 Copyright: © 2013 National Geographic Society, i-cubed



**TRANSCONTINENTAL GAS PIPE LINE COMPANY, LLC**  
 REGIONAL ENERGY ACCESS EXPANSION PROJECT  
 EXISTING DELAWARE RIVER REGULATOR AND LOWER MUD RUN METER STATION  
**PROJECT LOCATION MAP**

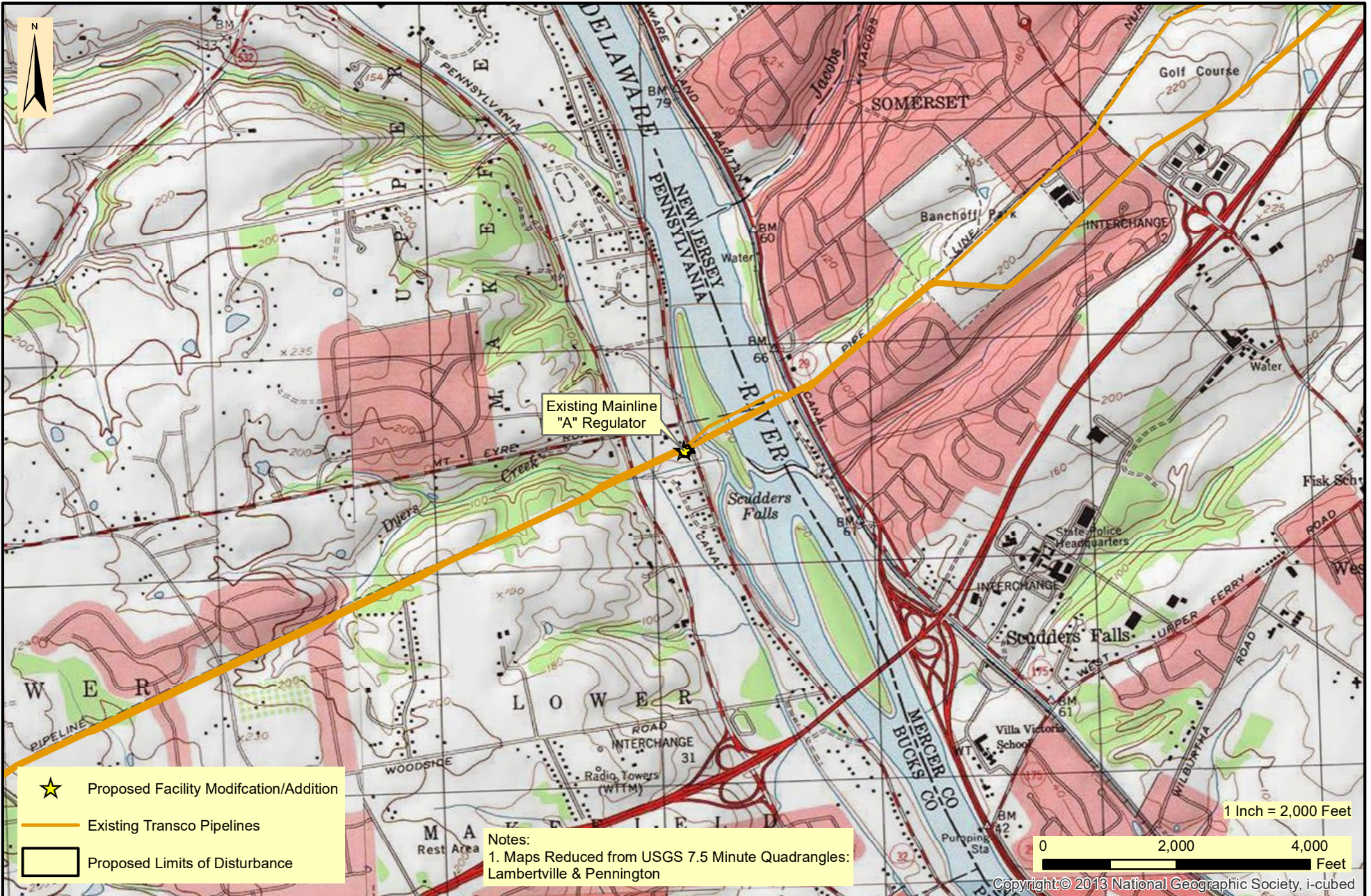
LOWER MT BETHEL TOWNSHIP

NORTHAMPTON COUNTY

PENNSYLVANIA

Date:	2/28/2022
Drawn By:	FTN
Figure Number:	DEL/LMR-1

**SECTION 1.5.6**  
**MAINLINE A REGULATOR**



- ★ Proposed Facility Modification/Addition
- Existing Transco Pipelines
- ▭ Proposed Limits of Disturbance



**TRANSCONTINENTAL GAS PIPE LINE COMPANY, LLC**  
**REGIONAL ENERGY ACCESS EXPANSION PROJECT**  
**EXISTING MAINLINE "A" REGULATOR**  
**PROJECT LOCATION MAP**

LOWER MAKEFIELD TOWNSHIP

BUCKS COUNTY

PENNSYLVANIA

Date:	2/10/2022
Drawn By:	FTN
Figure Number:	MLA-1