

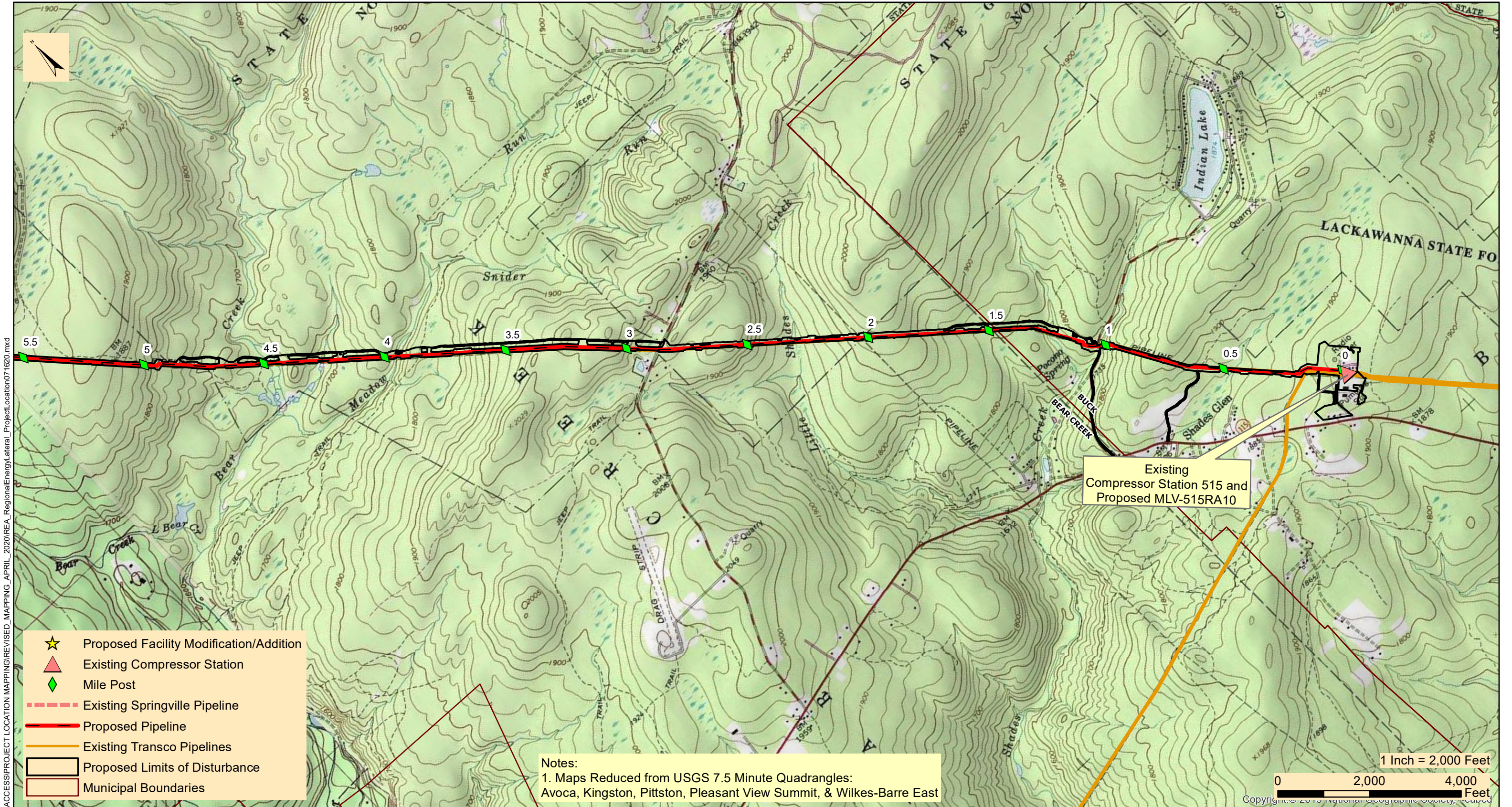


Transcontinental Gas Pipe Line Company, LLC

Requirement I – Project Location Map

**Regional Energy Access Expansion Project –
Regional Energy Lateral and Existing Compressor Station 515**

**April 2021
(Revised March 2022)**



M:\GIS\PROJECTS\REGIONAL_ENERGY_ACCESS\PROJECT_LOCATION_MAPPING\REVISED_MAPPING_APRIL_2020\REA_RegionalEnergy\Lateral_Project_Location071620.mxd

- ★ Proposed Facility Modification/Addition
- ▲ Existing Compressor Station
- ◆ Mile Post
- Existing Springville Pipeline
- Proposed Pipeline
- Existing Transco Pipelines
- ▭ Proposed Limits of Disturbance
- ▭ Municipal Boundaries

Notes:
 1. Maps Reduced from USGS 7.5 Minute Quadrangles:
 Avoca, Kingston, Pittston, Pleasant View Summit, & Wilkes-Barre East

Existing
 Compressor Station 515 and
 Proposed MLV-515RA10

1 Inch = 2,000 Feet
 0 2,000 4,000 Feet
 Copyright © 2019 National Geographic Society, Inc.



TRANSCONTINENTAL GAS PIPE LINE COMPANY, LLC
REGIONAL ENERGY ACCESS EXPANSION PROJECT
PROPOSED 30" REGIONAL ENERGY LATERAL
PROJECT LOCATION MAP

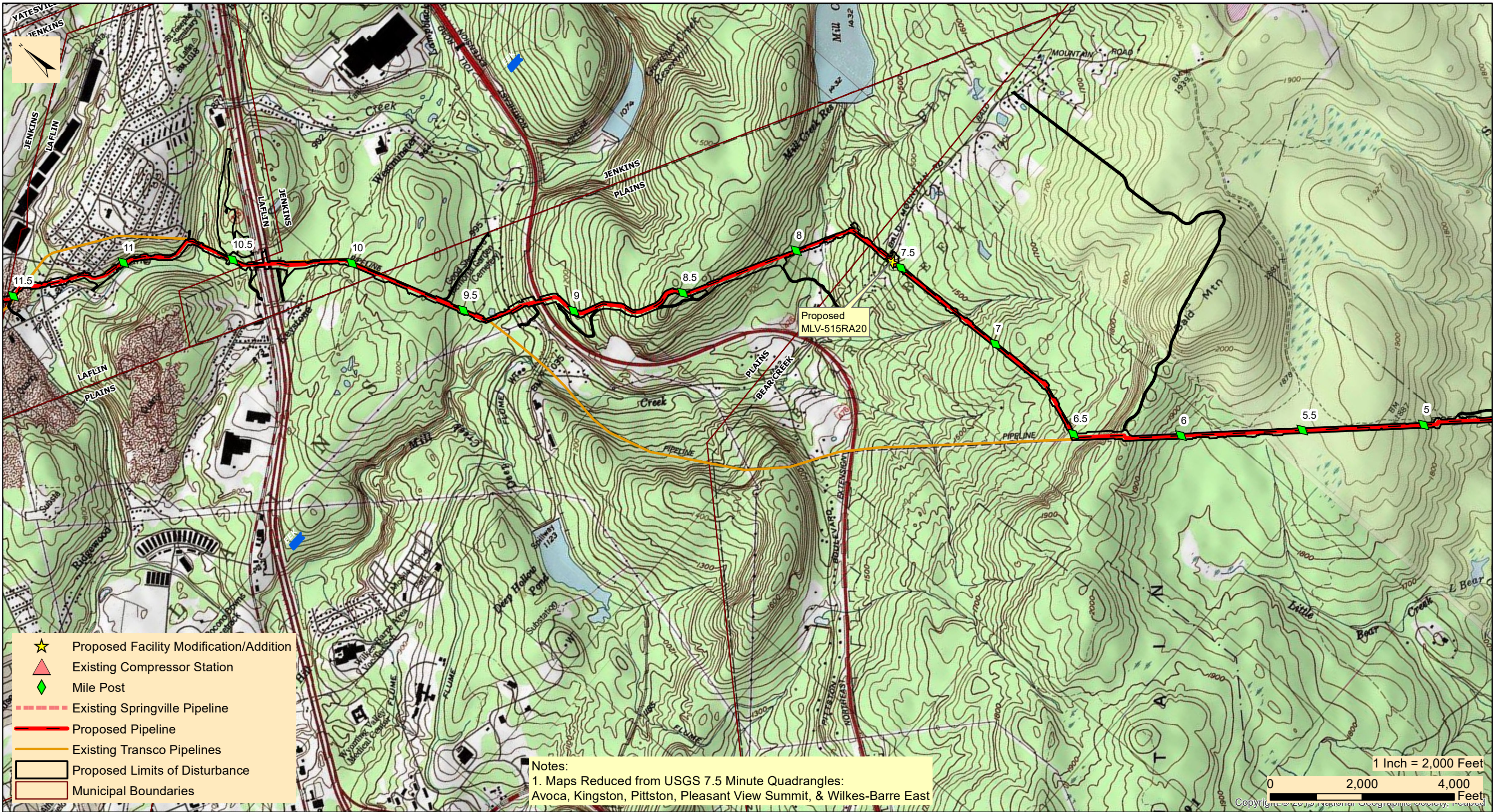
BUCK & BEAR CREEK TOWNSHIPS

LUZERNE COUNTY

PENNSYLVANIA

Date: 2/28/2022
Drawn By: FTN
Figure Number: REL-1

M:\GIS\PROJECTS\REGIONAL_ENERGY_ACCESS\PROJECT_LOCATION_MAPPING\REVISED_MAPPING_APRIL_2020\REA_RegionalEnergy\Lateral_Project_Location071620.mxd



- ★ Proposed Facility Modification/Addition
- ▲ Existing Compressor Station
- ◆ Mile Post
- Existing Springville Pipeline
- Proposed Pipeline
- Existing Transco Pipelines
- Proposed Limits of Disturbance
- Municipal Boundaries

Notes:
 1. Maps Reduced from USGS 7.5 Minute Quadrangles:
 Avoca, Kingston, Pittston, Pleasant View Summit, & Wilkes-Barre East

1 Inch = 2,000 Feet
 0 2,000 4,000 Feet
 Copyright © 2019 National Geographic Society. Reprinted



TRANSCONTINENTAL GAS PIPE LINE COMPANY, LLC
REGIONAL ENERGY ACCESS EXPANSION PROJECT
PROPOSED 30" REGIONAL ENERGY LATERAL
PROJECT LOCATION MAP

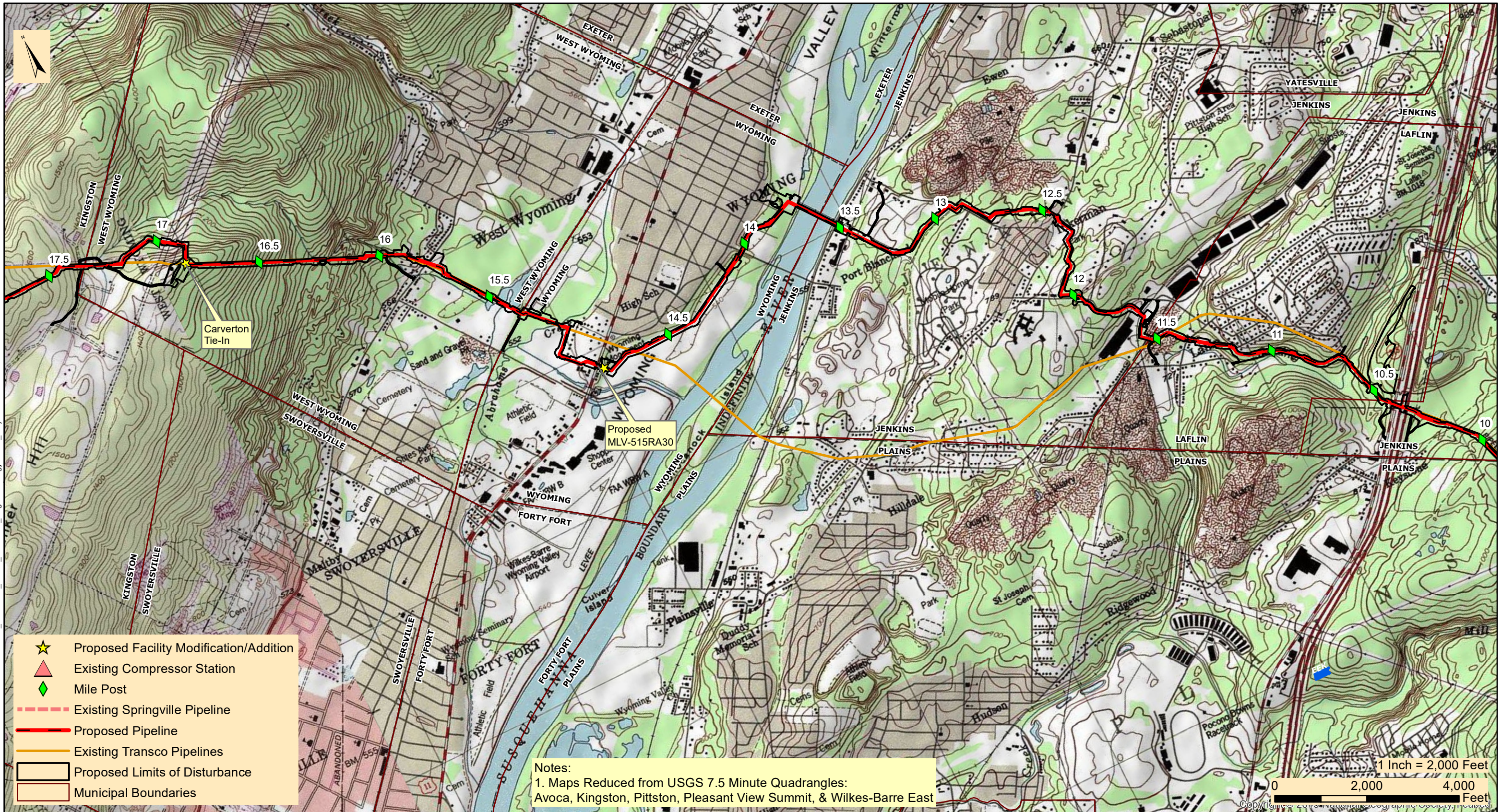
BEAR CREEK, JENKINS, PLAINS TWPS, & LAFLIN BOROUGH

LUZERNE COUNTY

PENNSYLVANIA

Date:	2/28/2022
Drawn By:	FTN
Figure Number:	REL-2

M:\GIS\PROJECTS\REGIONAL_ENERGY_ACCESS\PROJECT_LOCATION_MAPPING\REVISED_MAPPING_APRIL_2020\REA_RegionalEnergy_Lateral_Project_Location071620.mxd



- ★ Proposed Facility Modification/Addition
- ▲ Existing Compressor Station
- ◆ Mile Post
- Existing Springville Pipeline
- Proposed Pipeline
- Existing Transco Pipelines
- ▭ Proposed Limits of Disturbance
- ▭ Municipal Boundaries

Notes:
 1. Maps Reduced from USGS 7.5 Minute Quadrangles:
 Avoca, Kingston, Pittston, Pleasant View Summit, & Wilkes-Barre East

Scale: 1 Inch = 2,000 Feet
 0 2,000 4,000 Feet
 Copyright © 2019 National Geographic Society, Inc.



TRANSCONTINENTAL GAS PIPE LINE COMPANY, LLC
REGIONAL ENERGY ACCESS EXPANSION PROJECT
PROPOSED 30" REGIONAL ENERGY LATERAL
PROJECT LOCATION MAP

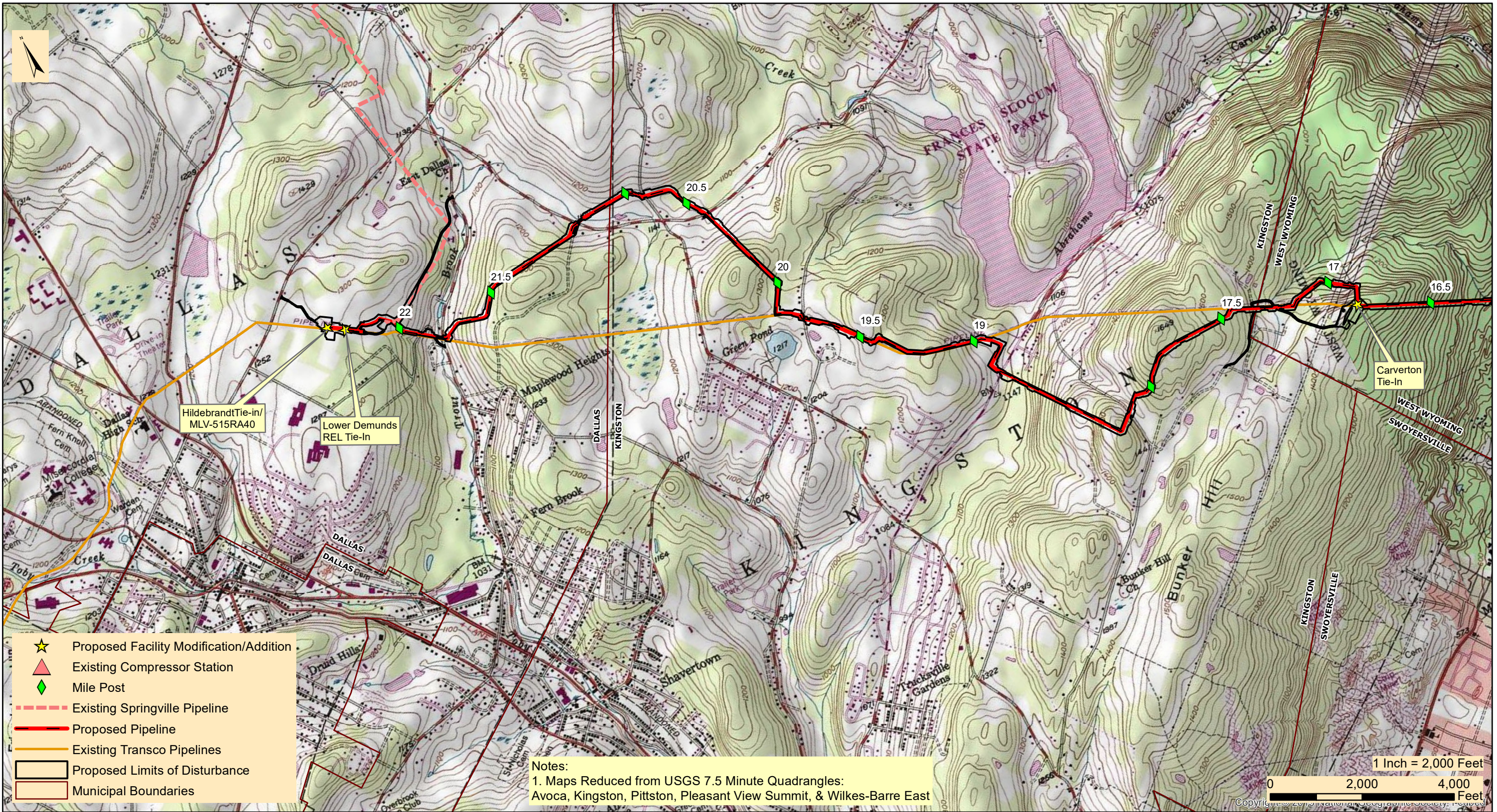
KINGSTON, JENKINS, WEST WYOMING, WYOMING, & LAFLIN

LUZERNE COUNTY

PENNSYLVANIA

Date:	2/28/2022
Drawn By:	FTN
Figure Number:	REL-3

M:\GIS\PROJECTS\REGIONAL_ENERGY_ACCESS\PROJECT_LOCATION_MAPPING\REVISED_MAPPING_APRIL_2020\REA_RegionalEnergyLateral_ProjectLocation071620.mxd



Notes:
 1. Maps Reduced from USGS 7.5 Minute Quadrangles:
 Avoca, Kingston, Pittston, Pleasant View Summit, & Wilkes-Barre East



TRANSCONTINENTAL GAS PIPE LINE COMPANY, LLC
REGIONAL ENERGY ACCESS EXPANSION PROJECT
PROPOSED 30" REGIONAL ENERGY LATERAL
PROJECT LOCATION MAP

DALLAS, KINGSTON, & WEST WYOMING TOWNSHIP

LUZERNE COUNTY

PENNSYLVANIA

Date:	2/28/2022
Drawn By:	FTN
Figure Number:	REL-4