



**Transcontinental Gas Pipe Line Company, LLC**

**Requirement P – Floodplain Management Analysis**

**Regional Energy Access Expansion Project –  
Regional Energy Lateral and Existing Compressor Station 515**

**April 2021  
(Revised July 2022)**



March 31, 2021

**UPS TRACKING (1Z8797VV0391946506)**

Luzerne County Planning Commission  
20 North Pennsylvania Avenue  
Wilkes-Barre, PA 18711

RE: Transcontinental Gas Pipe Line Company, LLC  
Regional Energy Access Expansion Project – Regional Energy Lateral  
Floodplain Management Analysis  
Wyoming Borough, Luzerne County, Pennsylvania

Dear Commissioners,

On behalf of Transcontinental Gas Pipe Line Company, LLC (Transco), WHM Consulting, LLC is providing a floodplain management analysis for water obstruction and encroachments located within the defined FEMA floodway of the Susquehanna River and Abrahams Creek associated with the Regional Energy Access Expansion Project - Regional Energy Lateral (Project). This analysis was conducted in accordance with 25 Pennsylvania Code §105.13(e)(I)(vi).

The scope of the Project consists of installing approximately 22.3 miles of 30-inch diameter pipeline, partially co-located with the existing Transco Leidy Line-A. Of the overall disturbance area, 8.5 acres is located within the defined FEMA floodway in Luzerne County. The Project will involve temporary disturbance within the FEMA floodway. No permanent aboveground facilities are located within the floodway. The area within the FEMA floodway will be restored to pre-construction conditions and contours after installation of the pipeline to maintain existing condition of the floodway and surface water profiles.

Enclosed you will find a figure outlining the location of the FEMA Floodway and Project's Limit of Disturbance. Please review the provided map and above analysis with respect to your township's floodplain management ordinances and provide any comments to:

PADEP Regional Permit Coordination Office  
Rachel Carson State Office Building  
400 Market Street  
Harrisburg, PA 17101

Sincerely,

**WHM Consulting, LLC**

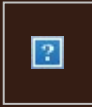
A handwritten signature in black ink, appearing to read 'Ryan Nelson', is written over a light blue circular stamp.

Ryan Nelson, PWS  
Senior Project Manager

cc: Joseph Dean, Transco  
Enclosures

**From:** [UPS](#)  
**To:** [SFOX@WHMGROUP.COM](mailto:SFOX@WHMGROUP.COM)  
**Subject:** UPS Delivery Notification, Tracking Number 1Z8797VV0391946506  
**Date:** Thursday, April 1, 2021 12:15:07 PM

---



**Hello, your package has been delivered.**

**Delivery Date:** Thursday, 04/01/2021

**Delivery Time:** 12:13 PM

**Left At:** RECEIVER

**Signed by:** WOOD



[Set Delivery Instructions](#)

[Manage Preferences](#)

[View My Packages](#)

**WHM CONSULTING, INC**

<b>Tracking Number:</b>	<a href="#">1Z8797VV0391946506</a>
<b>Ship To:</b>	LUZERNE COUNTY PLANNING COMMISSION 20 NORTH PENNSYLVANIA OFFICE WILKES BARRE, PA 18711 US
<b>Number of Packages:</b>	1
<b>UPS Service:</b>	UPS Ground
<b>Package Weight:</b>	5.0 LBS
<b>Reference Number:</b>	WILLIAMS 20-244 TASK 2C



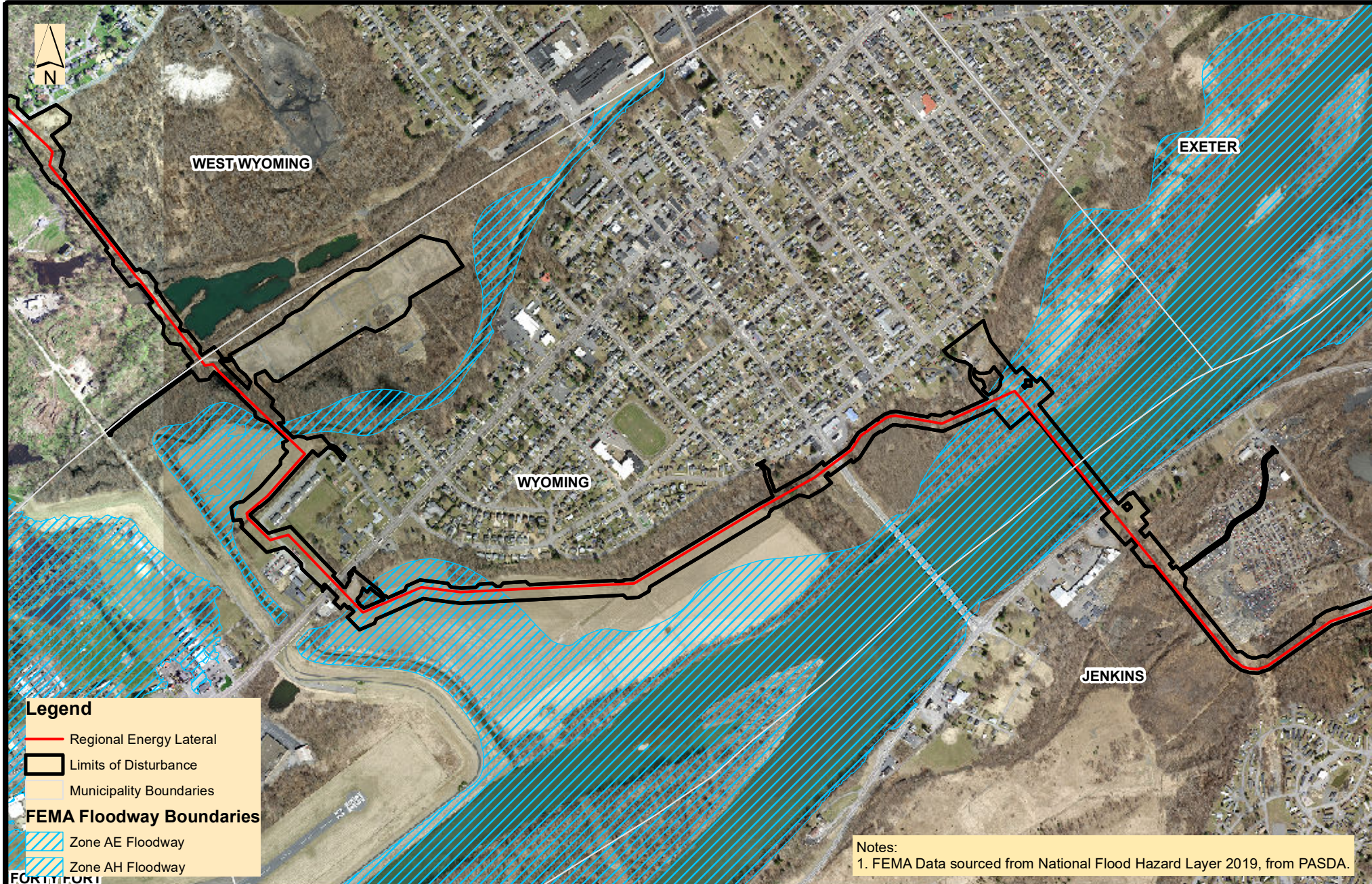
[Download the UPS mobile app](#)

© 2021 United Parcel Service of America, Inc. UPS, the UPS brandmark, and the color brown are trademarks of United Parcel Service of America, Inc. All rights reserved.

All trademarks, trade names, or service marks that appear in connection with UPS's services are the property of their respective owners.

Please do not reply directly to this email.

[Manage Your UPS My Choice Delivery Alerts](#)



**Legend**

- Regional Energy Lateral
- Limits of Disturbance
- Municipality Boundaries

**FEMA Floodway Boundaries**

- Zone AE Floodway
- Zone AH Floodway

**Notes:**  
 1. FEMA Data sourced from National Flood Hazard Layer 2019, from PASDA.



**TRANSCONTINENTAL GAS PIPE LINE COMPANY, LLC**  
**REGIONAL ENERGY ACCESS EXPANSION PROJECT**  
**REGIONAL ENERGY LATERAL**  
**FEMA FLOODWAY MAP**

LUZERNE COUNTY

PENNSYLVANIA

Date:	2/26/2021
Drawn By:	KMC
Figure Number:	1



March 31, 2021

**UPS TRACKING (1Z8797VV0393508495)**

Jenkins Township Supervisors  
46 ½ Main Street  
Inkerman, PA 18640

RE: Transcontinental Gas Pipe Line Company, LLC  
Regional Energy Access Expansion Project – Regional Energy Lateral  
Floodplain Management Analysis  
Jenkins Township, Luzerne County, Pennsylvania

Dear Township Supervisors,

On behalf of Transcontinental Gas Pipe Line Company, LLC (Transco), WHM Consulting, LLC is providing a floodplain management analysis for water obstruction and encroachments located within the defined FEMA floodway of the Susquehanna River located in Jenkins Township associated with the Regional Energy Access Expansion Project - Regional Energy Lateral (Project). This analysis was conducted in accordance with 25 Pennsylvania Code §105.13(e)(I)(vi).

The scope of the Project consists of installing approximately 22.3 miles of 30-inch diameter pipeline, partially co-located with the existing Transco Leidy Line-A. Of the overall disturbance area, 0.7 acres is located within the defined FEMA floodway within Jenkins Township. The Project will involve temporary disturbance within the FEMA floodway. No permanent aboveground facilities are located within the floodway. The area within the FEMA floodway will be restored to pre-construction conditions and contours after installation of the pipeline to maintain existing condition of the floodway and surface water profiles.

Enclosed you will find a figure outlining the location of the FEMA Floodway and Project's Limit of Disturbance. Please review the provided map and above analysis with respect to your township's floodplain management ordinances and provide any comments to:

PADEP Regional Permit Coordination Office  
Rachel Carson State Office Building  
400 Market Street  
Harrisburg, PA 17101

Sincerely,

**WHM Consulting, LLC**

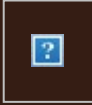
A handwritten signature in black ink, appearing to read 'Ryan Nelson', is written over a light gray circular background.

Ryan Nelson, PWS  
Senior Project Manager

cc: Joseph Dean, Transco  
Enclosures

**From:** [UPS](#)  
**To:** [SFOX@WHMGROUP.COM](mailto:SFOX@WHMGROUP.COM)  
**Subject:** UPS Delivery Notification, Tracking Number 1Z8797VV0393508495  
**Date:** Thursday, April 1, 2021 10:29:04 AM

---



**Hello, your package has been delivered.**

**Delivery Date:** Thursday, 04/01/2021

**Delivery Time:** 10:27 AM

**Left At:** RECEIVER

**Signed by:** FARCHIELD

## WHM CONSULTING, INC

<b>Tracking Number:</b>	<a href="#">1Z8797VV0393508495</a>
<b>Ship To:</b>	JENKINS TOWNSHIP SUPERVISORS 46 1/2 MAIN STREET INKERMAN, PA 18640 US
<b>Number of Packages:</b>	1
<b>UPS Service:</b>	UPS Ground
<b>Package Weight:</b>	4.0 LBS
<b>Reference Number:</b>	WILLIAMS 20-244, TASK 2C



[Download the UPS mobile app](#)

© 2021 United Parcel Service of America, Inc. UPS, the UPS brandmark, and the color brown are trademarks of United Parcel Service of America, Inc. All rights reserved.

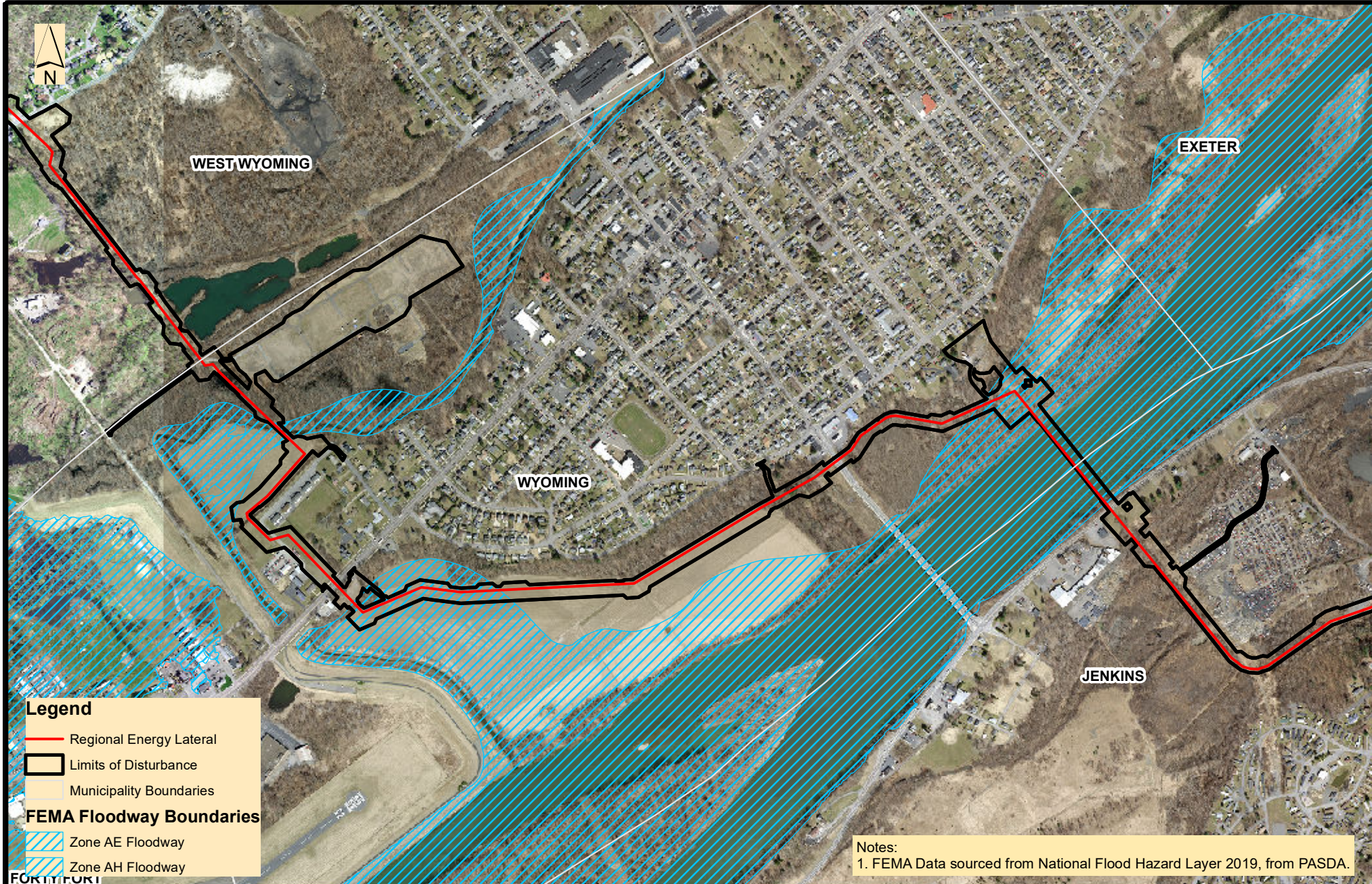
All trademarks, trade names, or service marks that appear in connection with UPS's services are the property of their respective owners.

Please do not reply directly to this email. UPS will not receive any reply message.

[Review the UPS Privacy Notice](#)

[For Questions, Visit Our Help and Support Center](#)





**Legend**

- Regional Energy Lateral
- Limits of Disturbance
- Municipality Boundaries

**FEMA Floodway Boundaries**

- Zone AE Floodway
- Zone AH Floodway

**Notes:**  
 1. FEMA Data sourced from National Flood Hazard Layer 2019, from PASDA.



**TRANSCONTINENTAL GAS PIPE LINE COMPANY, LLC**  
**REGIONAL ENERGY ACCESS EXPANSION PROJECT**  
**REGIONAL ENERGY LATERAL**  
**FEMA FLOODWAY MAP**

LUZERNE COUNTY

PENNSYLVANIA

Date:	2/26/2021
Drawn By:	KMC
Figure Number:	1



March 31, 2021

**UPS TRACKING (1Z8797VV0391482285)**

Wyoming Borough Supervisors  
277 Wyoming Avenue  
Wyoming, PA 18644

RE: Transcontinental Gas Pipe Line Company, LLC  
Regional Energy Access Expansion Project – Regional Energy Lateral  
Floodplain Management Analysis  
Wyoming Borough, Luzerne County, Pennsylvania

Dear Borough Supervisors,

On behalf of Transcontinental Gas Pipe Line Company, LLC (Transco), WHM Consulting, LLC is providing a floodplain management analysis for water obstruction and encroachments located within the defined FEMA floodway of the Susquehanna River and Abrahams Creek located in Wyoming Borough associated with the with the Regional Energy Access Expansion Project - Regional Energy Lateral (Project). This analysis was conducted in accordance with 25 Pennsylvania Code §105.13(e)(1)(vi).

The scope of the Project consists of installing approximately 22.3 miles of 30-inch diameter pipeline, partially co-located with the existing Transco Leidy Line-A. Of the overall disturbance area, 7.8 acres is located with the defined FEMA floodway within Wyoming Borough. The Project will involve temporary disturbance within the FEMA floodway. No permanent aboveground facilities are located within the floodway. The area within the FEMA floodway will be restored of pre-construction conditions and contours after installation of the pipeline to maintain existing condition of the floodway and surface water profiles.

Enclosed you will find a figure outlining the location of the FEMA Floodway and Project's Limit of Disturbance. Please review the provided map and above analysis with respect to your township's floodplain management ordinances and provide any comments to:

PADEP Regional Permit Coordination Office  
Rachel Carson State Office Building  
400 Market Street  
Harrisburg, PA 17101

Sincerely,

**WHM Consulting, LLC**

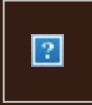
A handwritten signature in black ink, appearing to read 'Ryan Nelson', is written over a light blue circular stamp.

Ryan Nelson, PWS  
Senior Project Manager

cc: Joseph Dean, Transco  
Enclosures

**From:** [UPS](#)  
**To:** [SFOX@WHMGROUP.COM](mailto:SFOX@WHMGROUP.COM)  
**Subject:** UPS Delivery Notification, Tracking Number 1Z8797VV0391482285  
**Date:** Thursday, April 1, 2021 12:57:26 PM

---



**Hello, your package has been delivered.**

**Delivery Date:** Thursday, 04/01/2021

**Delivery Time:** 12:55 PM

**Left At:** SIDE DOOR



[Set Delivery Instructions](#)

[Manage Preferences](#)

[View My Packages](#)

## WHM CONSULTING, INC

<b>Tracking Number:</b>	<a href="#">1Z8797VV0391482285</a>
<b>Ship To:</b>	WYOMING BOROUGH SUPERVISORS 277 WYOMING AVENUE WYOMING, PA 18644 US
<b>Number of Packages:</b>	1
<b>UPS Service:</b>	UPS Ground
<b>Package Weight:</b>	4.0 LBS
<b>Reference Number:</b>	WILLIAMS 20-244, TASK 2C



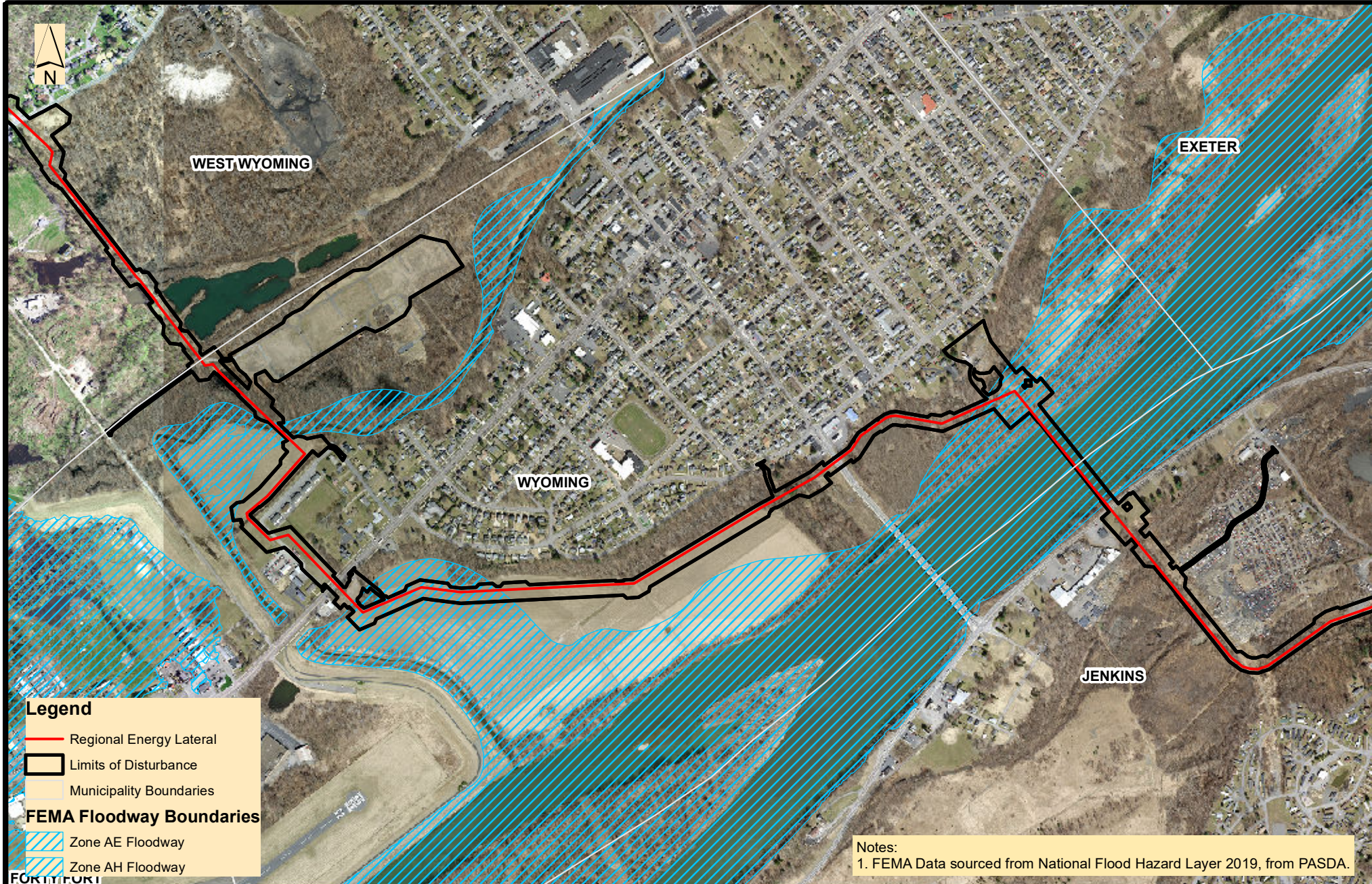
[Download the UPS mobile app](#)

© 2021 United Parcel Service of America, Inc. UPS, the UPS brandmark, and the color brown are trademarks of United Parcel Service of America, Inc. All rights reserved.

All trademarks, trade names, or service marks that appear in connection with UPS's services are the property of their respective owners.

Please do not reply directly to this email.

[Manage Your UPS My Choice Delivery Alerts](#)



**Legend**

- Regional Energy Lateral
- Limits of Disturbance
- Municipality Boundaries

**FEMA Floodway Boundaries**

- Zone AE Floodway
- Zone AH Floodway

**Notes:**  
 1. FEMA Data sourced from National Flood Hazard Layer 2019, from PASDA.



**TRANSCONTINENTAL GAS PIPE LINE COMPANY, LLC**  
**REGIONAL ENERGY ACCESS EXPANSION PROJECT**  
**REGIONAL ENERGY LATERAL**  
**FEMA FLOODWAY MAP**

LUZERNE COUNTY

PENNSYLVANIA

Date:	2/26/2021
Drawn By:	KMC
Figure Number:	1



**Transcontinental Gas Pipe Line Company, LLC**

**Regional Energy Access Expansion Project –  
Regional Energy Lateral and Existing Compressor Station 515**

**April 2022**



April 06, 2022

Jenkins Township Supervisors  
46 ½ Main Street  
Inkerman, PA 18640

RE: Transcontinental Gas Pipe Line Company, LLC  
Regional Energy Access Expansion Project – Regional Energy Lateral  
Floodplain Management Analysis - Updated  
Jenkins Township, Luzerne County, Pennsylvania

Dear Township Supervisors,

Transcontinental Gas Pipe Line Company, LLC (Transco), a subsidiary of Williams Partners L.P. (Williams) is providing a floodplain management analysis for water obstruction and encroachments located within the defined FEMA floodway of the Susquehanna River located in Jenkins Township associated with the Regional Energy Access Expansion Project - Regional Energy Lateral (Project). This analysis was conducted in accordance with 25 Pennsylvania Code §105.13(e)(I)(vi). Transco has updated the application in response to the PADEP Technical Deficiencies is providing the updated materials.

The scope of the Project consists of installing approximately 22.2 miles of 30-inch diameter pipeline, partially co-located with the existing Transco Leidy Line-A. Of the overall disturbance area, 0.73 acres is located within the defined FEMA floodway within Jenkins Township. The Project will involve temporary disturbance within the FEMA floodway. No permanent aboveground facilities are located within the floodway. The area within the FEMA floodway will be restored to pre-construction conditions and contours after installation of the pipeline to maintain existing condition of the floodway and surface water profiles.

Enclosed you will find a figure outlining the location of the FEMA Floodway and Project's Limit of Disturbance. Please review the provided map and above analysis with respect to your township's floodplain management ordinances and provide any comments to:

PADEP Regional Permit Coordination Office  
Rachel Carson State Office Building  
400 Market Street  
Harrisburg, PA 17101

Sincerely,

**WHM Consulting, LLC**

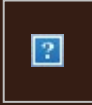
A handwritten signature in black ink, appearing to read "Ryan Nelson".

Ryan Nelson, PWS  
Senior Project Manager

cc: Joseph Dean, Transco  
Enclosures

**From:** [UPS](#)  
**To:** [SFOX@WHMGROUP.COM](mailto:SFOX@WHMGROUP.COM)  
**Subject:** UPS Delivery Notification, Tracking Number 1Z8797VV0398736337  
**Date:** Thursday, April 7, 2022 10:26:40 AM

---



**Hello, your package has been delivered.**

**Delivery Date:** Thursday, 04/07/2022

**Delivery Time:** 10:24 AM

**Signed by:** SARTIN

## WHM CONSULTING, INC

<b>Tracking Number:</b>	<a href="#">1Z8797VV0398736337</a>
<b>Ship To:</b>	JENKINS TOWNSHIP SUPERVISORS 46 1/2 MAIN STREET INKERMAN, PA 18640 US
<b>Number of Packages:</b>	1
<b>UPS Service:</b>	UPS Ground
<b>Package Weight:</b>	4.0 LBS
<b>Reference Number:</b>	WILLIAMS20-244, T2C

### Discover more about UPS:

[Visit www.ups.com](http://www.ups.com)

[Sign Up For Additional E-Mail From UPS](#)

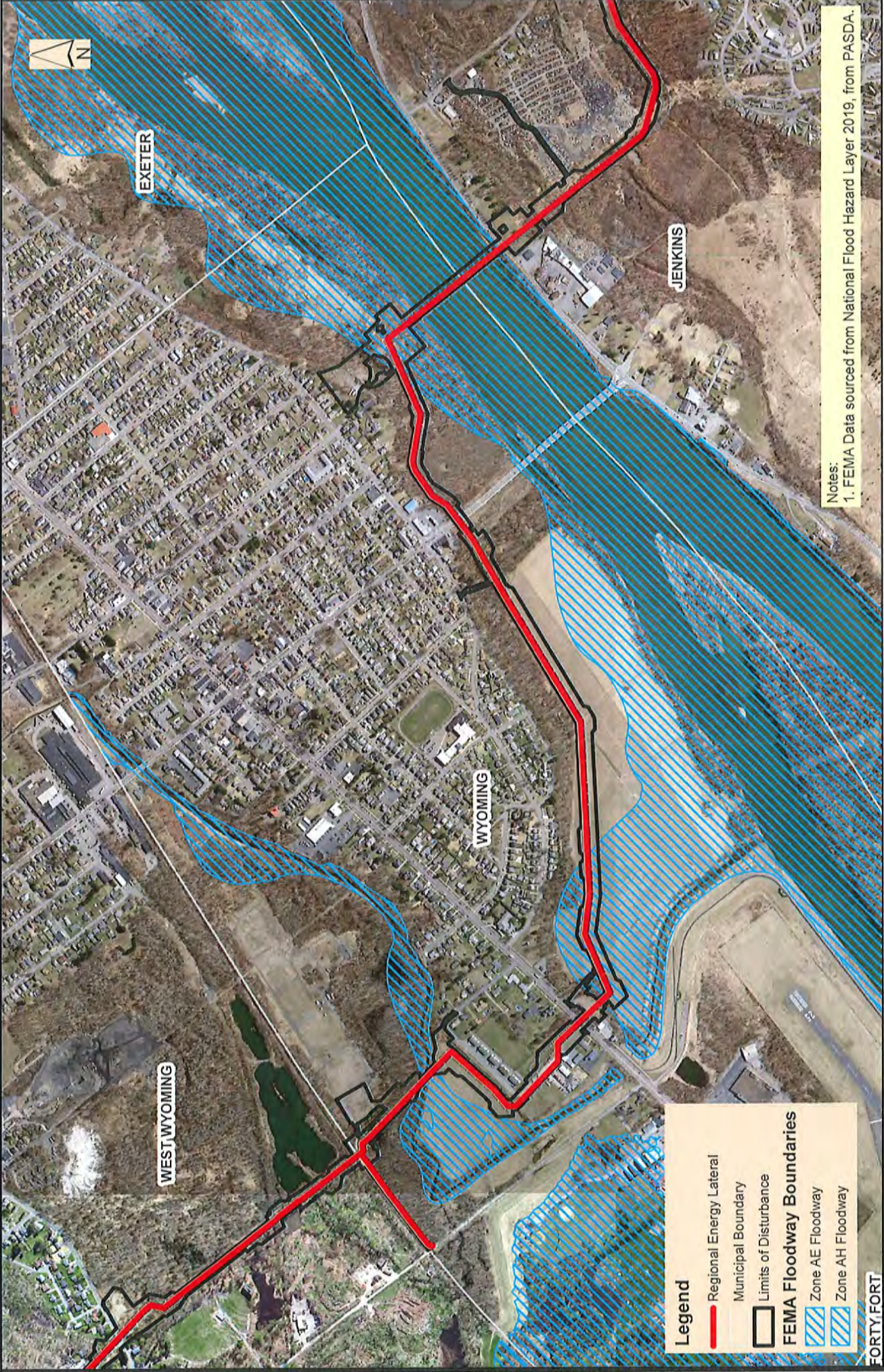
[Read Compass Online](#)



[Download the UPS mobile app](#)

© 2022 United Parcel Service of America, Inc. UPS, the UPS brandmark, and the color brown are trademarks of United Parcel Service of America, Inc. All rights reserved.

All trademarks, trade names, or service marks that appear in connection with UPS's services are the property of their respective owners.



Notes:  
 1. FEMA Data sourced from National Flood Hazard Layer 2019, from PASDA.

**Legend**

- Regional Energy Lateral
- Municipal Boundary
- ▭ Limits of Disturbance

**FEMA Floodway Boundaries**

- Zone AE Floodway
- Zone AH Floodway

Date:	4/4/2022
Drawn By:	FTN
Figure Number:	1

**TRANSCONTINENTAL GAS PIPE LINE COMPANY, LLC**  
**REGIONAL ENERGY ACCESS EXPANSION PROJECT**  
**REGIONAL ENERGY LATERAL**  
**SUSQUEHANNA RIVER FEMA FLOODWAY MAP**

LUZERNE COUNTY  
 PENNSYLVANIA



April 06, 2022

Wyoming Borough Supervisors  
277 Wyoming Avenue  
Wyoming, PA 18644

RE: Transcontinental Gas Pipe Line Company, LLC  
Regional Energy Access Expansion Project – Regional Energy Lateral  
Floodplain Management Analysis - Updated  
Wyoming Borough, Luzerne County, Pennsylvania

Dear Borough Supervisors,

Transcontinental Gas Pipe Line Company, LLC (Transco), a subsidiary of Williams Partners L.P. (Williams) is providing a floodplain management analysis for water obstruction and encroachments located within the defined FEMA floodway of the Susquehanna River and Abrahams Creek located in Wyoming Borough associated with the with the Regional Energy Access Expansion Project - Regional Energy Lateral (Project). This analysis was conducted in accordance with 25 Pennsylvania Code §105.13(e)(I)(vi). Transco has updated the application in response to the PADEP Technical Deficiencies is providing the updated materials.

The scope of the Project consists of installing approximately 22.2 miles of 30-inch diameter pipeline, partially co-located with the existing Transco Leidy Line-A. Of the overall disturbance area, 8.27 acres is located with the defined FEMA floodway within Wyoming Borough. The Project will involve temporary disturbance within the FEMA floodway. No permanent aboveground facilities are located within the floodway. The area within the FEMA floodway will be restored to pre-construction conditions and contours after installation of the pipeline to maintain existing condition of the floodway and surface water profiles.

Enclosed you will find a figure outlining the location of the FEMA Floodway and Project's Limit of Disturbance. Please review the provided map and above analysis with respect to your township's floodplain management ordinances and provide any comments to:

PADEP Regional Permit Coordination Office  
Rachel Carson State Office Building  
400 Market Street  
Harrisburg, PA 17101

Sincerely,

**WHM Consulting, LLC**

A handwritten signature in black ink, appearing to read "Ryan Nelson", is written over the printed name.

Ryan Nelson, PWS  
Senior Project Manager

cc: Joseph Dean, Transco  
Enclosures

# Proof of Delivery

Dear Customer,

This notice serves as proof of delivery for the shipment listed below.

**Tracking Number**

1Z8797VV0393411311

**Weight**

4.00 LBS

**Service**

UPS Ground

**Shipped / Billed On**

04/06/2022

**Delivered On**

04/07/2022 1:18 P.M.

**Delivered To**

WYOMING, PA, US

**Received By**

TREAGAN

**Left At**

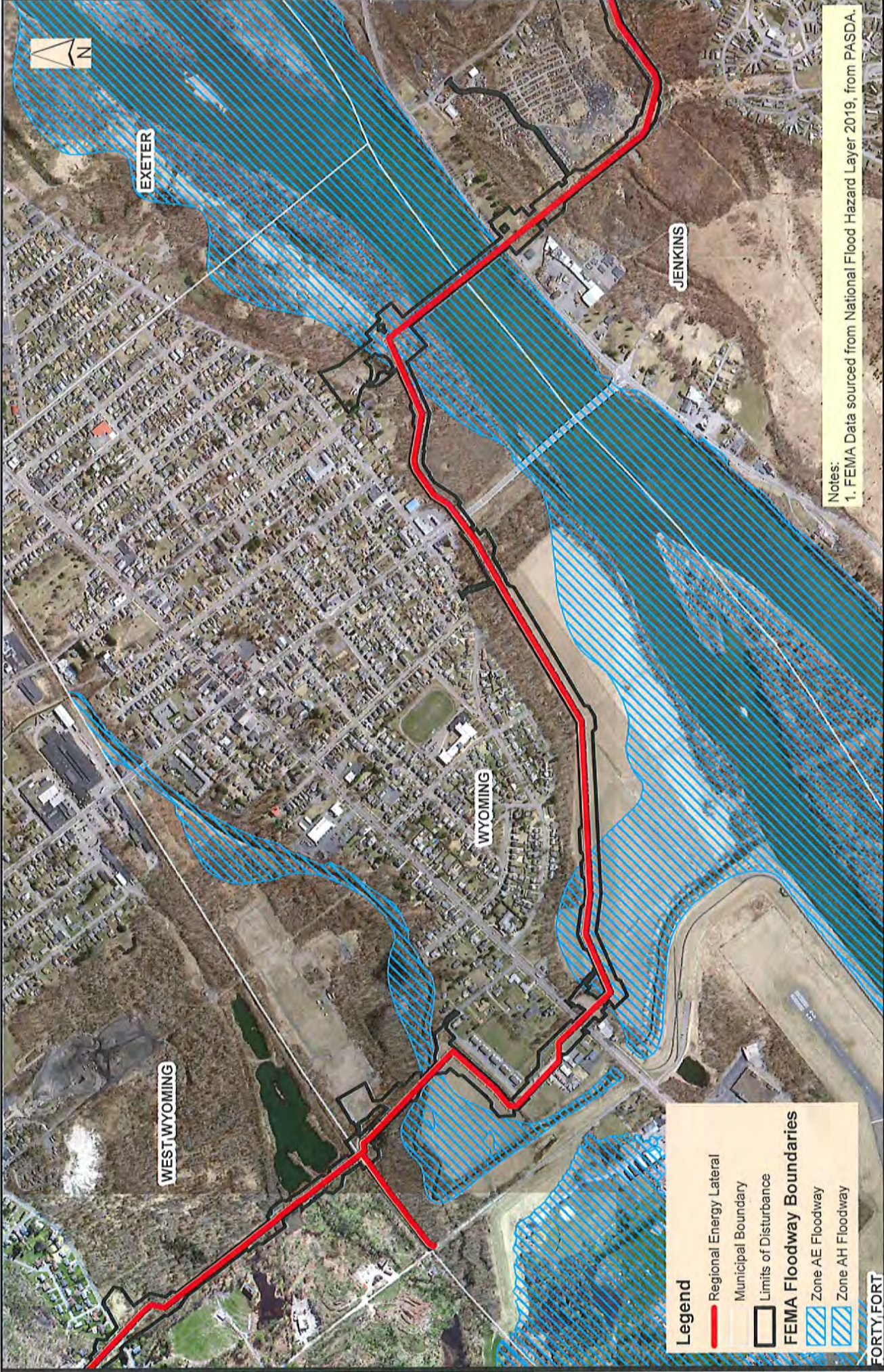
Front Desk

Thank you for giving us this opportunity to serve you. Details are only available for shipments delivered within the last 120 days. Please print for your records if you require this information after 120 days.

Sincerely,

UPS

Tracking results provided by UPS: 04/11/2022 11:09 A.M. EST



Notes:  
 1. FEMA Data sourced from National Flood Hazard Layer 2019, from PASDA.

**Legend**

- Regional Energy Lateral
- Municipal Boundary
- Limits of Disturbance

**FEMA Floodway Boundaries**

- Zone AE Floodway
- Zone AH Floodway

Date:	4/4/2022
Drawn By:	FTN
Figure Number:	1

**TRANSCONTINENTAL GAS PIPE LINE COMPANY, LLC**  
**REGIONAL ENERGY ACCESS EXPANSION PROJECT**  
**REGIONAL ENERGY LATERAL**  
**SUSQUEHANNA RIVER FEMA FLOODWAY MAP**

LUZERNE COUNTY





April 06, 2022

Luzerne County Planning Commission  
20 North Pennsylvania Avenue  
Wilkes-Barre, PA 18711

RE: Transcontinental Gas Pipe Line Company, LLC  
Regional Energy Access Expansion Project – Regional Energy Lateral  
Floodplain Management Analysis - Updated  
Wyoming Borough, Luzerne County, Pennsylvania

Dear Commissioners,

Transcontinental Gas Pipe Line Company, LLC (Transco), a subsidiary of Williams Partners L.P. (Williams) is providing a floodplain management analysis for water obstruction and encroachments located within the defined FEMA floodway of the Susquehanna River and Abrahams Creek associated with the Regional Energy Access Expansion Project - Regional Energy Lateral (Project). This analysis was conducted in accordance with 25 Pennsylvania Code §105.13(e)(I)(vi). Transco has updated the application in response to the PADEP Technical Deficiencies is providing the updated materials.

The scope of the Project consists of installing approximately 22.2 miles of 30-inch diameter pipeline, partially co-located with the existing Transco Leidy Line-A. Of the overall disturbance area, 9.0 acres is located with the defined FEMA floodway in Luzerne County. The Project will involve temporary disturbance within the FEMA floodway. No permanent aboveground facilities are located within the floodway. The area within the FEMA floodway will be restored to pre-construction conditions and contours after installation of the pipeline to maintain existing condition of the floodway and surface water profiles.

Enclosed you will find a figure outlining the location of the FEMA Floodway and Project's Limit of Disturbance. Please review the provided map and above analysis with respect to your township's floodplain management ordinances and provide any comments to:

PADEP Regional Permit Coordination Office  
Rachel Carson State Office Building  
400 Market Street  
Harrisburg, PA 17101

Sincerely,

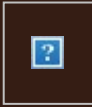
**WHM Consulting, LLC**

A handwritten signature in black ink, appearing to read "Ryan Nelson".

Ryan Nelson, PWS  
Senior Project Manager

cc: Joseph Dean, Transco  
Enclosures

**From:** [UPS](#)  
**To:** [SFOX@WHMGROUP.COM](mailto:SFOX@WHMGROUP.COM)  
**Subject:** UPS Delivery Notification, Tracking Number 1Z8797VV0395238363  
**Date:** Thursday, April 7, 2022 1:21:29 PM



**Hello, your package has been delivered.**

**Delivery Date:** Thursday, 04/07/2022

**Delivery Time:** 1:19 PM

**Signed by:** WOOD



[Set Delivery Instructions](#)

[Manage Preferences](#)

[View My Packages](#)

## WHM CONSULTING, INC

**Tracking Number:**

[1Z8797VV0395238363](#)

**Ship To:**

LUZERNE COUNTY PLANNING COMMISSION  
20 NORTH PENNSYLVANIA OFFICE  
WILKES BARRE, PA 18711  
US

**Number of Packages:**

1

**UPS Service:**

UPS Ground

**Package Weight:**

5.0 LBS

**Reference Number:**

WILLIAMS-20-244, T2C



[Download the UPS mobile app](#)

© 2022 United Parcel Service of America, Inc. UPS, the UPS brandmark, and the color brown are trademarks of United Parcel Service of America, Inc. All rights reserved.

All trademarks, trade names, or service marks that appear in connection with UPS's services are the property of their respective owners.

M:\GIS\PROJECTS\REGIONAL\_ENERGY\_ACCESS\REGIONAL\_ENERGY\_ACCESS\EMAS\Susquehanna\_River\_FEMA\_Map\_03312022.mxd



**Legend**

- Regional Energy Lateral
- Municipal Boundary
- Limits of Disturbance
- FEMA Floodway Boundaries**
- Zone AE Floodway
- Zone AH Floodway

**Notes:**  
 1. FEMA Data sourced from National Flood Hazard Layer 2019, from PASDA.



**TRANSCONTINENTAL GAS PIPE LINE COMPANY, LLC**  
**REGIONAL ENERGY ACCESS EXPANSION PROJECT**  
**REGIONAL ENERGY LATERAL**  
**SUSQUEHANNA RIVER FEMA FLOODWAY MAP**

Date:	4/4/2022
Drawn By:	FTN
Figure Number:	1

LUZERNE COUNTY

PENNSYLVANIA