

STATIONS

M.P. 53.20

M.P. 53.30 ENTER WETLAND (W-T51-21004)
M.P. 53.30

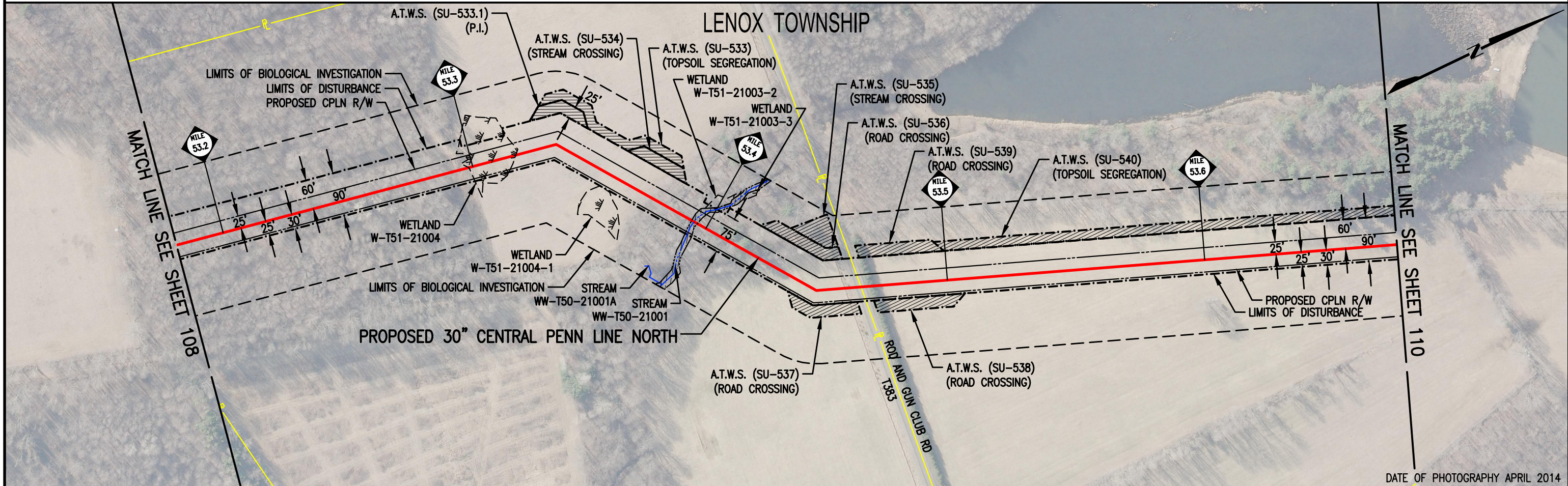
M.P. 53.32 EXIT WETLAND (W-T51-21004)

M.P. 52.40 @ STREAM (WW-T50-21001)
M.P. 53.40

M.P. 53.47 @ ROD AND GUN CLUB RD T383

M.P. 53.50

M.P. 53.60



OWNERSHIP

PA-SU-018.000
241.00-2,028.00,000.

ROD AND GUN CLUB RD
T383
PA-SU-018.5.RD

PA-SU-020.000
242.00-1,002.00,000.

LEGEND

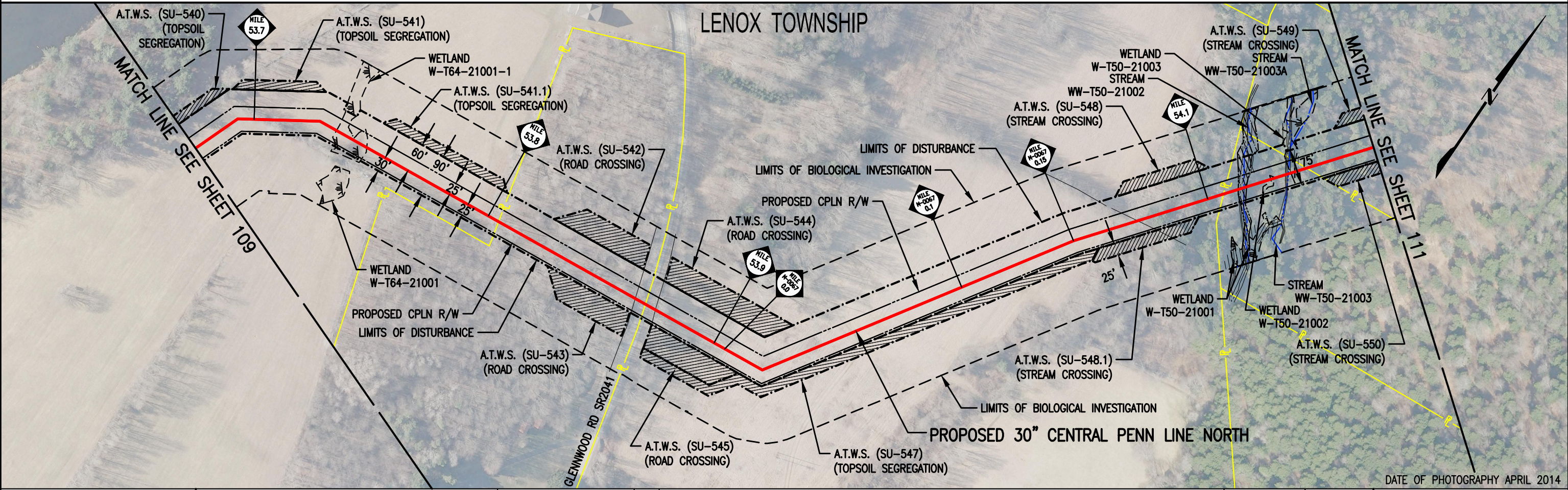
- PROPOSED 30" CENTRAL PENN LINE NORTH
- EXISTING PIPELINES
- EXISTING TGPL R/W
- LIMITS OF DISTURBANCE
- PROPOSED CPLN R/W
- PROPERTY LINE
- FOREIGN PIPELINE
- LIMITS OF BIOLOGICAL INVESTIGATION
- WETLAND AREA
- STREAM CROSSING
- ADDITIONAL TEMPORARY WORKSPACE (A.T.W.S.)



| DRAWING NO. | | REFERENCE TITLE | | TRANSCONTINENTAL GAS PIPE LINE COMPANY LLC FERC ALIGNMENT SHEET ATLANTIC SUNRISE PROJECT PROPOSED 30" CENTRAL PENN LINE NORTH M.P. 53.18 TO M.P. 53.67 SUSQUEHANNA COUNTY, PENNSYLVANIA | | | | | | |
|-------------|----------|-----------------|-----------------------------------|--|------|------|------------------|----------------|--|------------------|
| NO. | DATE | BY | REVISION DESCRIPTION | W.O. NO. | CHK. | APP. | DRAWN BY: MH | DATE: 07/15/14 | ISSUED FOR BID: | SCALE: 1" = 200' |
| 0 | 03/31/15 | CR | ISSUED FOR FERC FILING | 1161481 | CLR | MJH | CHECKED BY: TC | DATE: 09/24/14 | ISSUED FOR CONSTRUCTION: | REVISION: 3 |
| 1 | 08/03/15 | JB | ISSUED FOR PADEP 105 PERMIT | 1161481 | CLR | MJH | APPROVED BY: MJH | DATE: 09/25/14 | DRAWING NUMBER: F-AS-CPLN-A-01 | SHEET 109 |
| 2 | 12/18/15 | JB | ISSUED FOR SUPPLEMENTAL FILING #3 | 1161481 | CLR | MJH | WO: 1161481 | | 2:41pm | OF 137 |
| 3 | 06/10/16 | IG | ISSUED FOR SUPPLEMENTAL FILING #4 | 1161481 | CLR | MJH | | | 6/9/2016 K:\103646-CPLN\Mapping\Ferc_Align\F-AS-CPLN-A_01_109.dwg | |

STATIONS

M.P. 53.70
 M.P. 53.73 ENTER WETLAND (W-T64-21001-1)
 M.P. 53.75 EXIT WETLAND (W-T64-21001-1)
 M.P. 53.80
 M.P. 53.87 GLENWOOD RD SR2041
 M.P. 53.90
 M.P. 53.90 BK = M-0067 0.00 AH
 M-0067 M.P. 0.10
 M-0067 M.P. 0.15 BK = M.P. 54.05 AH
 M.P. 54.10
 M.P. 54.11 G Stream (WW-T50-21002) MILLARD CREEK
 M.P. 54.12 ENTER WETLAND (W-T50-21002)
 M.P. 54.12 EXIT WETLAND (W-T50-21002)
 M.P. 54.13 G Stream (WW-T50-21003)
 M.P. 54.13 ENTER WETLAND (W-T50-21003)
 M.P. 54.13 EXIT WETLAND (W-T50-21003)



| | | | | | | |
|------------------|---------------------------------------|---------------------------------------|---|---------------------------------------|---------------------------------------|---------------------------------------|
| OWNERSHIP | PA-SU-020.000 242.00-1,002.00,000. | PA-SU-021.000 242.00-1,003.00,000. | GLENWOOD RD SR2041 PA-SU-021.5.RD | PA-SU-020.000 242.00-1,002.00,000. | PA-SU-022.000 242.00-1,056.00,000. | PA-SU-023.000 242.00-1,062.00,000. |
|------------------|---------------------------------------|---------------------------------------|---|---------------------------------------|---------------------------------------|---------------------------------------|

LEGEND

- PROPOSED 30" CENTRAL PENN LINE NORTH
- EXISTING PIPELINES
- - - EXISTING TGPL R/W
- - - LIMITS OF DISTURBANCE
- - - PROPOSED CPLN R/W
- PROPERTY LINE
- FOREIGN PIPELINE
- - - LIMITS OF BIOLOGICAL INVESTIGATION
- WETLAND AREA
- STREAM CROSSING
- ADDITIONAL TEMPORARY WORKSPACE (A.T.W.S.)

**WOOD GROUP
MUSTANG, INC.**

0 200 400 600
SCALE IN FEET

| | | | | | | | | | | |
|-------------|----------|-----------------|-----------------------------------|--|------|------|------------------|----------------|--|------------------|
| DRAWING NO. | | REFERENCE TITLE | | TRANSCONTINENTAL GAS PIPE LINE COMPANY LLC FERC ALIGNMENT SHEET ATLANTIC SUNRISE PROJECT PROPOSED 30" CENTRAL PENN LINE NORTH M.P. 53.67 TO M.P. 54.16 SUSQUEHANNA COUNTY, PENNSYLVANIA | | | | | | |
| NO. | DATE | BY | REVISION DESCRIPTION | W.O. NO. | CHK. | APP. | DRAWN BY: MH | DATE: 07/15/14 | ISSUED FOR BID: | SCALE: 1" = 200' |
| 0 | 03/31/15 | CR | ISSUED FOR FERC FILING | 1161481 | CLR | MJH | CHECKED BY: TC | DATE: 09/24/14 | ISSUED FOR CONSTRUCTION: | REVISION: 3 |
| 1 | 08/03/15 | JB | ISSUED FOR PADEP 105 PERMIT | 1161481 | CLR | MJH | APPROVED BY: MJH | DATE: 09/25/14 | DRAWING NUMBER: F-AS-CPLN-A-01 | SHEET 110 |
| 2 | 12/18/15 | JB | ISSUED FOR SUPPLEMENTAL FILING #3 | 1161481 | CLR | MJH | WO: 1161481 | DATE: 09/25/14 | 6/15/2016 | OF 137 |
| 3 | 06/10/16 | IG | ISSUED FOR SUPPLEMENTAL FILING #4 | 1161481 | CLR | MJH | | | 9:37am K:\103646-CPLN\MapInfo\Ferc_Align\F-AS-CPLN-A_01_110.dwg | |

STATIONS

M.P. 54.20

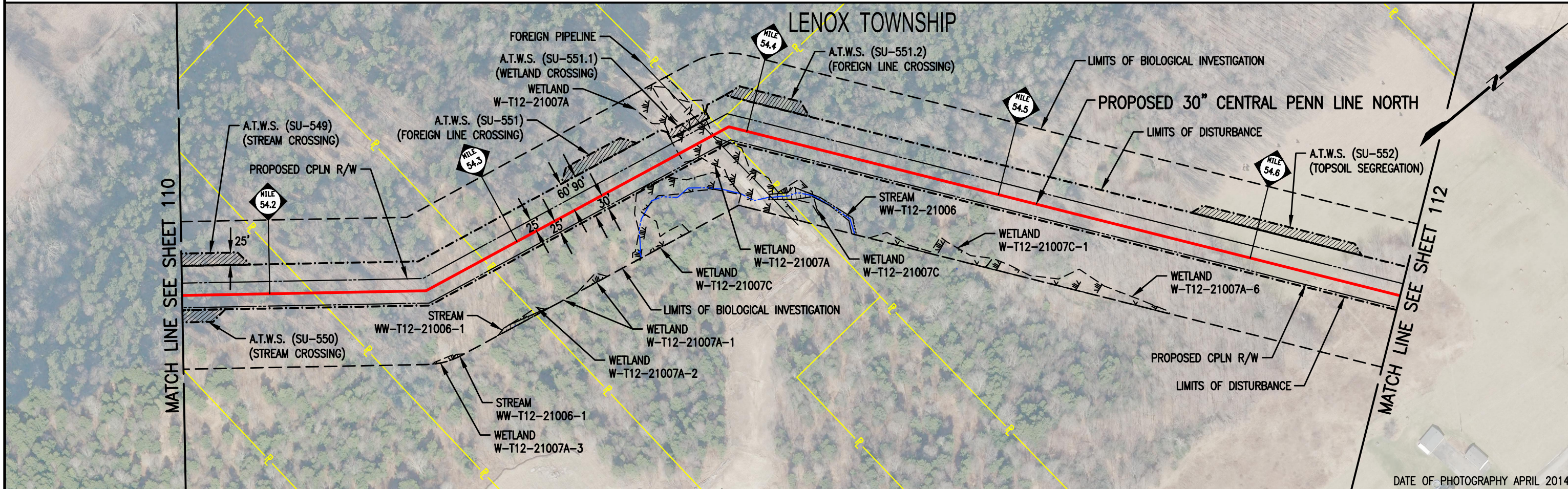
M.P. 54.30

M.P. 54.37 ENTER WETLAND W-T12-1007A
M.P. 54.39 FOREIGN PIPELINE CROSSING
M.P. 54.39 EXIT WETLAND W-T12-21007A

M.P. 54.40

M.P. 54.50

M.P. 54.60



| | | | | |
|------------------|---------------------------------------|---------------------------------------|---------------------------------------|---------------------------------------|
| OWNERSHIP | PA-SU-023.000 242.00-1,062.00,000. | PA-SU-025.000 242.00-1,057.00,000. | PA-SU-026.000 242.00-1,058.00,000. | PA-SU-027.000 223.00-1,030.00,000. |
|------------------|---------------------------------------|---------------------------------------|---------------------------------------|---------------------------------------|

LEGEND

- PROPOSED 30" CENTRAL PENN LINE NORTH
- EXISTING PIPELINES
- EXISTING TGPL R/W
- - - - - LIMITS OF DISTURBANCE
- - - - - PROPOSED CPLN R/W
- PROPERTY LINE
- FOREIGN PIPELINE
- - - - - LIMITS OF BIOLOGICAL INVESTIGATION
- WETLAND AREA
- STREAM CROSSING
- ADDITIONAL TEMPORARY WORKSPACE (A.T.W.S.)



| | | | | | | |
|-------------|-----------------|----|-----------------------------------|----------|------|------|
| DRAWING NO. | REFERENCE TITLE | | | | | |
| NO. | DATE | BY | REVISION DESCRIPTION | W.O. NO. | CHK. | APP. |
| 1 | 05/26/15 | JB | ISSUED FOR SUPPLEMENTAL FILING #1 | 1161481 | CLR | MJH |
| 2 | 08/03/15 | CR | ISSUED FOR PADEP 105 PERMIT | 1161481 | CLR | MJH |
| 3 | 12/18/15 | AT | ISSUED FOR SUPPLEMENTAL FILING #3 | 1161481 | CLR | MJH |
| 4 | 06/10/16 | IG | ISSUED FOR SUPPLEMENTAL FILING #4 | 1161481 | CLR | MJH |

TRANSCONTINENTAL GAS PIPE LINE COMPANY LLC
FERC ALIGNMENT SHEET
ATLANTIC SUNRISE PROJECT
PROPOSED 30" CENTRAL PENN LINE NORTH
M.P. 54.16 TO M.P. 54.66
SUSQUEHANNA COUNTY, PENNSYLVANIA

Williams

| | | | |
|------------------|----------------|---------------------------------------|------------------|
| DRAWN BY: MH | DATE: 07/15/14 | ISSUED FOR BID: | SCALE: 1" = 200' |
| CHECKED BY: TC | DATE: 09/24/14 | ISSUED FOR CONSTRUCTION: | REVISION: 4 |
| APPROVED BY: MJH | DATE: 09/25/14 | DRAWING NUMBER: F-AS-CPLN-A-01 | SHEET 111 |
| WO: 1161481 | | 6/14/2016 nlu | OF 137 |

K:\103646-CPLN\Mapping\Ferc_Align\F-AS-CPLN-A_01_111.dwg

STATIONS

M.P. 54.70

M.P. 54.77 T503 (SWAMP RD)

M.P. 54.78 OVERHEAD ELECTRIC
M.P. 54.78 OVERHEAD ELECTRIC

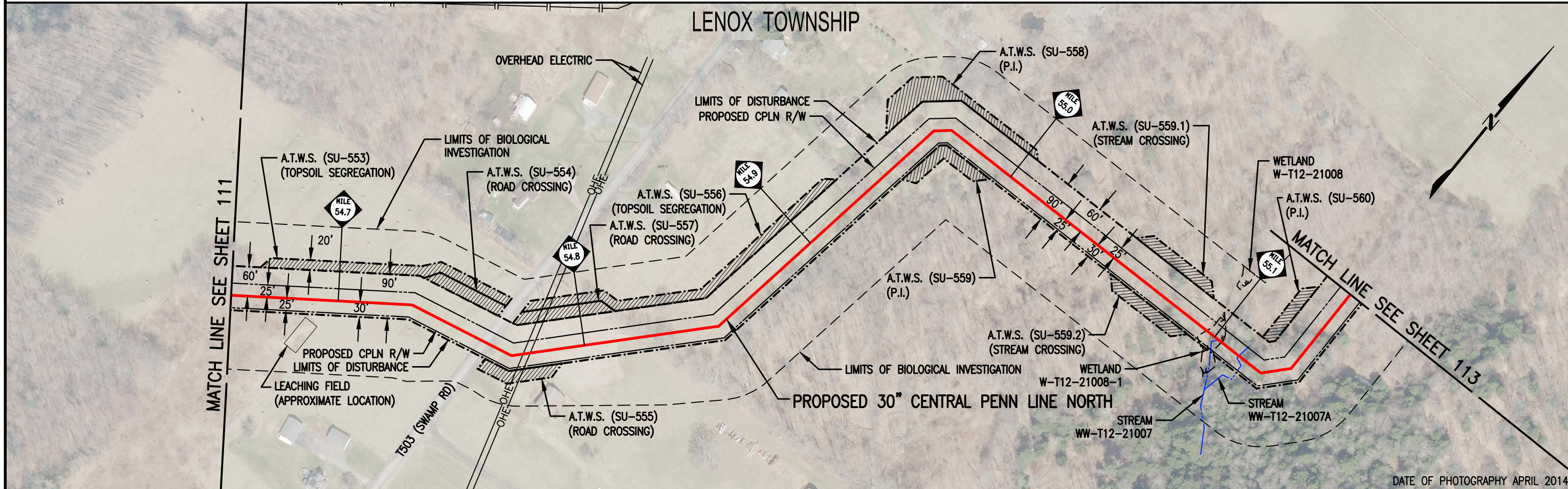
M.P. 54.80

M.P. 54.90

M.P. 55.00

M.P. 55.10 ENTER WETLAND (W-T12-21008-1)
M.P. 55.10
M.P. 52.10 & STREAM (WW-T12-21007)
M.P. 55.10 EXIT WETLAND (W-T12-21008-1)
M.P. 52.11 & STREAM (WW-T12-21007A)

LENOX TOWNSHIP



DATE OF PHOTOGRAPHY APRIL 2014

OWNERSHIP

PA-SU-027.000
223.00-1,030.00,000.

T503 (SWAMP RD)
PA-SU-027.5.RD

PA-SU-028.001
223.00-1,029.02,000.

PA-SU-030.000
223.00-1,028.00,000.

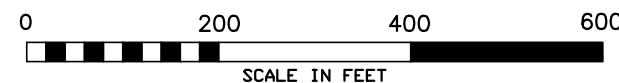
PA-SU-031.000
223.00-1,045.00,000.

PA-SU-030.000
223.00-1,028.00,000.

PA-SU-032.000
223.00-1,027.00,000.

LEGEND

- PROPOSED 30" CENTRAL PENN LINE NORTH
- EXISTING PIPELINES
- EXISTING TGPL R/W
- LIMITS OF DISTURBANCE
- PROPOSED CPLN R/W
- PROPERTY LINE
- FOREIGN PIPELINE
- LIMITS OF BIOLOGICAL INVESTIGATION
- WETLAND AREA
- STREAM CROSSING
- ADDITIONAL TEMPORARY WORKSPACE (A.T.W.S.)



| DRAWING NO. | REFERENCE TITLE |
|-------------|-----------------|
| | |

TRANSCONTINENTAL GAS PIPE LINE COMPANY LLC
FERC ALIGNMENT SHEET
ATLANTIC SUNRISE PROJECT
PROPOSED 30" CENTRAL PENN LINE NORTH
M.P. 54.66 TO M.P. 55.17
SUSQUEHANNA COUNTY, PENNSYLVANIA

| NO. | DATE | BY | REVISION DESCRIPTION | W.O. NO. | CHK. | APP. | DRAWN BY: | DATE: | ISSUED FOR BID: | SCALE: |
|-----|----------|----|-----------------------------------|----------|------|------|-----------|----------|-----------------|-----------|
| 1 | 05/26/15 | VC | ISSUED FOR SUPPLEMENTAL FILING #1 | 1161481 | CLR | MJH | MH | 07/15/14 | | 1" = 200' |
| 2 | 08/03/15 | CR | ISSUED FOR PADEP 105 PERMIT | 1161481 | CLR | MJH | TC | 09/24/14 | | 4 |
| 3 | 12/18/15 | AT | ISSUED FOR SUPPLEMENTAL FILING #3 | 1161481 | CLR | MJH | MJH | 09/25/14 | | |
| 4 | 04/29/16 | TL | ISSUED FOR SUPPLEMENTAL FILING #3 | 1161481 | CLR | MJH | MJH | | | |

DRAWING NUMBER: **F-AS-CPLN-A-01**
8:42am 5/2/2016 12lb
C:\103646-CPLN\MapInfo\Ferc_Alon\FINAL_FERC_FILING\F-AS-CPLN-A-01_112.dwg

STATIONS

M.P. 55.20

M.P. 55.30

M.P. 55.38 ENTER WETLAND (W-T12-21009A)
 M.P. 55.39 EXIT WETLAND (W-T12-21009A)
 M.P. 55.39 ENTER WETLAND (W-T12-21009A-1)
 M.P. 55.40

M.P. 55.43 EXIT WETLAND (W-T12-21009A-1)

M.P. 55.45 ENTER WETLAND (W-T12-21009A-2)
 M.P. 55.46 EXIT WETLAND (W-T12-21009A-2)

M.P. 55.47 BK = M-0061 0.00 AH

M-0061 M.P. 0.03 ENTER WETLAND (W-T12-21009C)
 M-0061 M.P. 0.04 EXIT WETLAND (W-T12-21009C)
 M-0061 M.P. 0.04 ENTER WETLAND (W-T12-21009B)
 M-0061 M.P. 0.06 EXIT WETLAND (W-T12-21009B)
 M-0061 M.P. 0.06 ENTER WETLAND (W-T12-21009C)
 M-0061 M.P. 0.07 EXIT WETLAND (W-T12-21009C)
 M-0061 M.P. 0.09 ENTER WETLAND (W-T12-21009C)
 M-0061 M.P. 0.09 EXIT WETLAND (W-T12-21009C)
 M-0061 M.P. 0.09 Q STREAM (WW-T12-21009A)
 M-0061 M.P. 0.09 ENTER WETLAND (W-T12-21009C)
 M-0061 M.P. 0.09 EXIT WETLAND (W-T12-21009C)

LENOX TOWNSHIP

PROPOSED 30" CENTRAL PENN LINE NORTH

A.T.W.S. (SU-561.1)
 (WETLAND CROSSING)

LIMITS OF BIOLOGICAL INVESTIGATION

A.T.W.S. (SU-561)
 (TOPSOIL SEGREGATION)

LIMITS OF DISTURBANCE

PROPOSED CPLN R/W

MATCH LINE SEE SHEET 112

MILE 55.2

PROPOSED CPLN R/W

LIMITS OF DISTURBANCE

LIMITS OF BIOLOGICAL INVESTIGATION

WETLAND
 W-T12-21009A-1

MILE 55.4

WETLAND
 W-T12-21009A-2

A.T.W.S. (SU-561.2)
 (WETLAND CROSSING)

WETLAND
 W-T12-21009C

STREAM
 WW-T12-21009

STREAM
 WW-T92-21002

STREAM
 WW-T12-21008

WETLAND
 W-T12-21009A

WETLAND
 W-T12-21009B

STREAM
 WW-T12-21009A

WETLAND
 T-T12-21009C-1

MATCH LINE SEE SHEET 114

DATE OF PHOTOGRAPHY APRIL 2014

OWNERSHIP

PA-SU-032.000
 223.00-1,027.00,000.

PA-SU-033.000
 223.00-1,026.01,000.

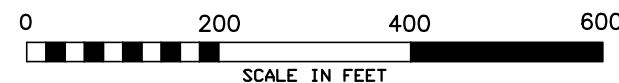
PA-SU-035.000
 223.00-1,015.00,000.

PA-SU-034.001
 223.00-1,021.00,000.

PA-SU-036.000
 223.00-1,020.00,000.

LEGEND

- PROPOSED 30" CENTRAL PENN LINE NORTH
- EXISTING PIPELINES
- EXISTING TGPL R/W
- LIMITS OF DISTURBANCE
- PROPOSED CPLN R/W
- PROPERTY LINE
- FOREIGN PIPELINE
- LIMITS OF BIOLOGICAL INVESTIGATION
- WETLAND AREA
- STREAM CROSSING
- ADDITIONAL TEMPORARY WORKSPACE (A.T.W.S.)



DRAWING NO. REFERENCE TITLE

TRANSCONTINENTAL GAS PIPE LINE COMPANY LLC
 FERC ALIGNMENT SHEET
 ATLANTIC SUNRISE PROJECT
 PROPOSED 30" CENTRAL PENN LINE NORTH
 M.P. 55.17 TO M-0061 M.P. 0.10
 SUSQUEHANNA COUNTY, PENNSYLVANIA



| NO. | DATE | BY | REVISION DESCRIPTION | W.O. NO. | CHK. | APP. | DRAWN BY: | DATE: | ISSUED FOR BID: | SCALE: |
|-----|----------|----|-----------------------------------|----------|------|------|-----------|----------|-----------------|-------------|
| 1 | 05/26/15 | JB | ISSUED FOR SUPPLEMENTAL FILING #1 | 1161481 | CLR | MJH | VC | 07/15/14 | | 1" = 200' |
| 2 | 08/03/15 | JB | ISSUED FOR PADEP 105 PERMIT | 1161481 | CLR | MJH | CLR | 09/24/14 | | REVISION: 4 |
| 3 | 12/18/15 | AT | ISSUED FOR SUPPLEMENTAL FILING #3 | 1161481 | CLR | MJH | MJH | 09/25/14 | | |
| 4 | 06/10/16 | IG | ISSUED FOR SUPPLEMENTAL FILING #4 | 1161481 | CLR | MJH | MJH | | | |

DRAWING NUMBER: F-AS-CPLN-A-01
 SHEET 113 OF 137

STATIONS

M-0061 M.P. 0.16 BK = M.P. 55.63 AH

M.P. 55.70

M.P. 55.73 @ BENNETT RD T503

M.P. 55.80

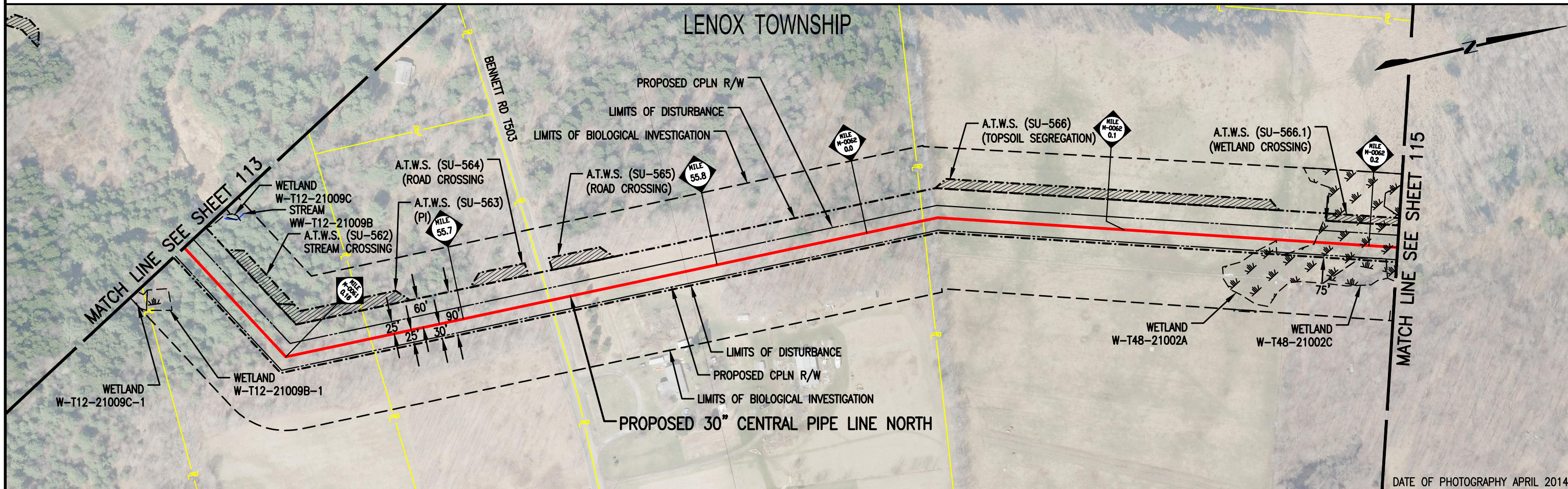
M.P. 55.86 BK = M-0062 M.P. 0.00 AH

M-0062 M.P. 0.10

M-0062 M.P. 0.17 ENTER WETLAND (W-T48-21002A)

M-0062 M.P. 0.20

LENOX TOWNSHIP



DATE OF PHOTOGRAPHY APRIL 2014

OWNERSHIP

PA-SU-036.000
223.00-1,020.00,000.

PA-SU-038.000
223.00-1,018.00,000.

BENNETT RD T503
PA-SU-038.5.RD

PA-SU-039.000
223.00-1,016.00,000.

PA-SU-040.000
223.00-1,012.02,000.

LEGEND

- PROPOSED 30" CENTRAL PENN LINE NORTH
- EXISTING PIPELINES
- EXISTING TGPL R/W
- LIMITS OF DISTURBANCE
- PROPOSED CPLN R/W
- PROPERTY LINE
- FOREIGN PIPELINE
- LIMITS OF BIOLOGICAL INVESTIGATION
- WETLAND AREA
- STREAM CROSSING
- ADDITIONAL TEMPORARY WORKSPACE (A.T.W.S.)



DRAWING NO.

REFERENCE TITLE

TRANSCONTINENTAL GAS PIPE LINE COMPANY LLC
FERC ALIGNMENT SHEET
ATLANTIC SUNRISE PROJECT
PROPOSED 30" CENTRAL PENN LINE NORTH
M-0061 M.P. 0.10 TO M-0062 M.P. 0.21
SUSQUEHANNA COUNTY, PENNSYLVANIA



| NO. | DATE | BY | REVISION DESCRIPTION | W.O. NO. | CHK. | APP. | DRAWN BY: | DATE: | ISSUED FOR BID: | SCALE: |
|-----|----------|----|-----------------------------------|----------|------|------|-----------|----------|-----------------|-----------|
| 1 | 05/26/15 | JB | ISSUED FOR SUPPLEMENTAL FILING #1 | 1161481 | CLR | MJH | VC | 07/15/14 | | 1" = 200' |
| 2 | 08/03/15 | JB | ISSUED FOR PADEP 105 PERMIT | 1161481 | CLR | MJH | CLR | 09/24/14 | | 4 |
| 3 | 12/18/15 | AT | ISSUED FOR SUPPLEMENT FILING #3 | 1161481 | CLR | MJH | MJH | 09/25/14 | | |
| 4 | 06/10/16 | IG | ISSUED FOR SUPPLEMENT FILING #4 | 1161481 | CLR | MJH | MJH | | | |

DRAWING NUMBER: F-AS-CPLN-A-01
SHEET 114 OF 137

STATIONS

M-0062 M.P. 0.21 EXIT WETLAND (W-T48-21002A)
 M-0062 M.P. 0.21 ENTER WETLAND (W-T48-21002C)
 M-0062 M.P. 0.23 EXIT WETLAND (W-T48-21020C)
 M-0062 M.P. 0.25 BK = M.P. 56.10 AH

M.P. 56.20

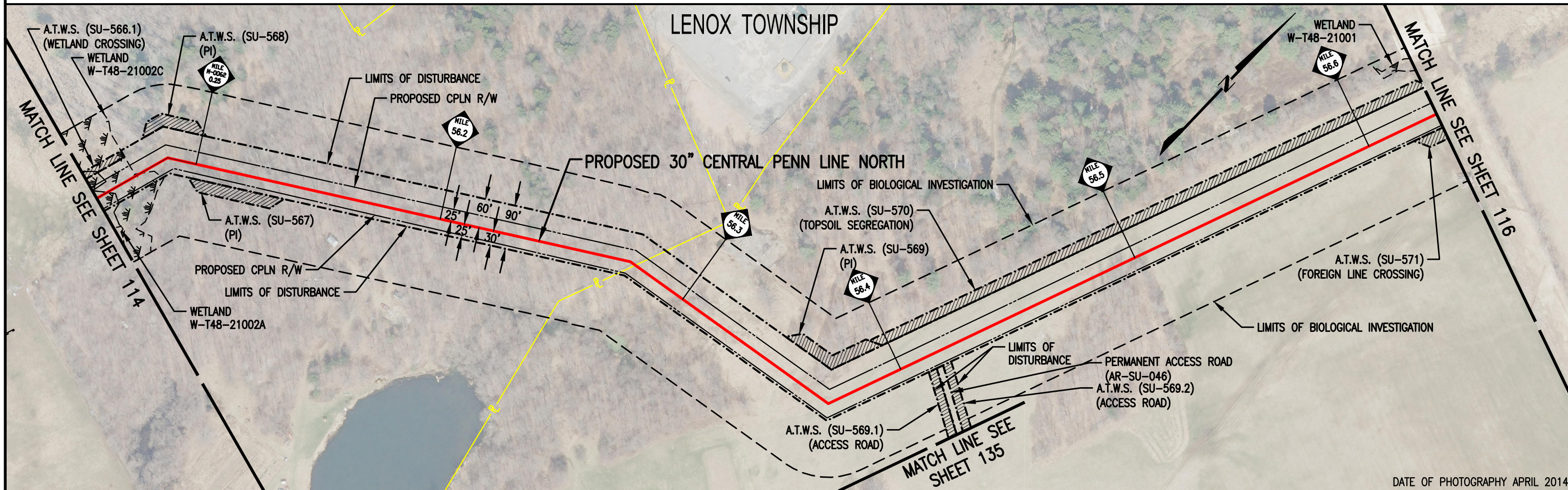
M.P. 56.30

M.P. 56.40

M.P. 56.50

M.P. 56.60

LENOX TOWNSHIP



DATE OF PHOTOGRAPHY APRIL 2014

OWNERSHIP

PA-SU-040.000
223.00-1,012.02,000.

PA-SU-041.000
223.00-1,010.00,000.

LEGEND

- PROPOSED 30" CENTRAL PENN LINE NORTH
- EXISTING PIPELINES
- EXISTING TGPL R/W
- LIMITS OF DISTURBANCE
- PROPOSED CPLN R/W
- PROPERTY LINE
- FOREIGN PIPELINE
- LIMITS OF BIOLOGICAL INVESTIGATION
- WETLAND AREA
- STREAM CROSSING
- ADDITIONAL TEMPORARY WORKSPACE (A.T.W.S.)



| | | | | | | | | | | | | |
|-------------|----------|----------------------|-----------------------------------|--|-----|-----|--|--|--|--|--|--|
| DRAWING NO. | | REFERENCE TITLE | | TRANSCONTINENTAL GAS PIPE LINE COMPANY LLC FERC ALIGNMENT SHEET ATLANTIC SUNRISE PROJECT PROPOSED 30" CENTRAL PENN LINE NORTH M-0062 M.P. 0.21 TO M.P. 56.63 SUSQUEHANNA COUNTY, PENNSYLVANIA | | | | | | | | |
| NO. | | REVISION DESCRIPTION | | | | | | | | DRAWN BY: VC CHECKED BY: CLR APPROVED BY: MJH WO: 1161481 | | DATE: 07/15/14 DATE: 09/24/14 DATE: 09/25/14 |
| 1 | 05/26/15 | JB | ISSUED FOR SUPPLEMENTAL FILING #1 | 1161481 | CLR | MJH | | | | | | |
| 2 | 08/03/15 | JB | ISSUED FOR PADEP 105 PERMIT | 1161481 | CLR | MJH | | | | | | |
| 3 | 12/18/15 | AT | ISSUED FOR SUPPLEMENTAL FILING #3 | 1161481 | CLR | MJH | | | | | | |
| 4 | 06/10/16 | DLK | ISSUED FOR SUPPLEMENTAL FILING #4 | 1161481 | CLR | MJH | | | | | | |

STATIONS

M.P. 56.64 FOREIGN PIPELINE CROSSING

M.P. 56.70

M.P. 56.75 ENTER WETLAND (W-T48-21001)

M.P. 56.77 EXIT WETLAND (W-T48-21001)

M.P. 56.79 ENTER WETLAND (W-T48-21003)

M.P. 56.80

M.P. 56.80 EXIT WETLAND (W-T48-21003)

M.P. 56.80 & STREAM (WW-T48-21001) TOWER BRANCH

M.P. 56.80 ENTER WETLAND (W-T48-21003)

M.P. 56.82 EXIT WETLAND (W-T48-21003)

M.P. 56.90

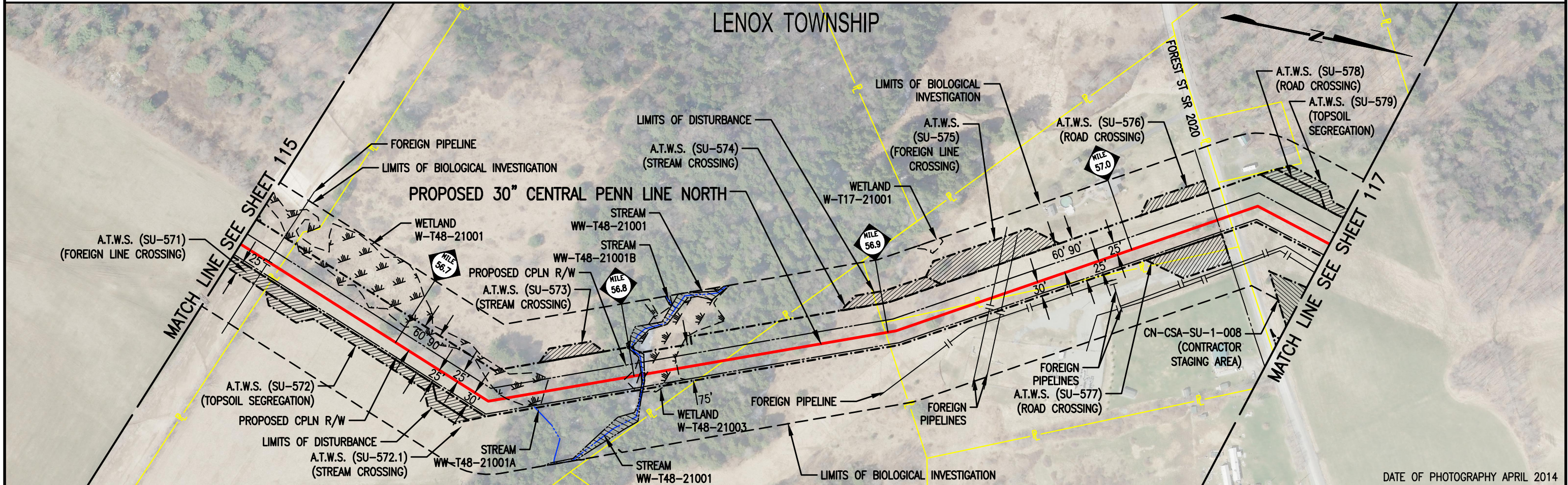
M.P. 56.94 FOREIGN PIPELINE CROSSING

M.P. 56.95 FOREIGN PIPELINE CROSSING

M.P. 57.00

M.P. 57.04 & FOREST ST SR 2020

LENOX TOWNSHIP



DATE OF PHOTOGRAPHY APRIL 2014

OWNERSHIP

| | | | | | | |
|---------------------------------------|---------------------------------------|---------------------------------------|---------------------------------------|---------------------------------------|--|---------------------------------------|
| PA-SU-041.000 223.00-1,010.00,000. | PA-SU-043.000 224.00-1,002.01,000. | PA-SU-044.000 224.00-1,055.00,000. | PA-SU-047.000 204.00-2,026.00,000. | PA-SU-046.000 204.00-2,027.00,000. | FOREST ST SR 2020 PA-SU-046.5.RD | PA-SU-049.000 204.00-2,034.00,000. |
|---------------------------------------|---------------------------------------|---------------------------------------|---------------------------------------|---------------------------------------|--|---------------------------------------|

LEGEND

- PROPOSED 30" CENTRAL PENN LINE NORTH
- EXISTING PIPELINES
- EXISTING TGPL R/W
- LIMITS OF DISTURBANCE
- PROPOSED CPLN R/W
- PROPERTY LINE
- FOREIGN PIPELINE
- LIMITS OF BIOLOGICAL INVESTIGATION
- WETLAND AREA
- STREAM CROSSING
- ADDITIONAL TEMPORARY WORKSPACE (A.T.W.S.)



| | | | | | | | | | | |
|-------------|----------|-----------------|-----------------------------------|--|-----|-----|------------------|----------------|--|-------------|
| DRAWING NO. | | REFERENCE TITLE | | TRANSCONTINENTAL GAS PIPE LINE COMPANY LLC FERC ALIGNMENT SHEET ATLANTIC SUNRISE PROJECT PROPOSED 30" CENTRAL PENN LINE NORTH M.P. 56.63 TO M.P. 57.08 SUSQUEHANNA COUNTY, PENNSYLVANIA | | | | | | |
| NO. | DATE | BY | REVISION DESCRIPTION | | | | | | | W.O. NO. |
| 0 | 03/31/15 | CR | ISSUED FOR FERC FILING | 1161481 | CLR | MJH | CHECKED BY: TC | DATE: 09/24/14 | ISSUED FOR CONSTRUCTION: | REVISION: 3 |
| 1 | 08/03/15 | CR | ISSUED FOR PADEP 105 PERMIT | 1161481 | CLR | MJH | APPROVED BY: MJH | DATE: 09/25/14 | DRAWING NUMBER: F-AS-CPLN-A-01 | SHEET 116 |
| 2 | 12/18/15 | AT | ISSUED FOR SUPPLEMENTAL FILING #3 | 1161481 | CLR | MJH | WO: 1161481 | DATE: 09/25/14 | 6/15/2016 | OF 137 |
| 3 | 06/10/16 | DLK | ISSUED FOR SUPPLEMENTAL FILING #4 | 1161481 | CLR | MJH | | | K:\103646-CPLN\Mapping\Ferc_Align\F-AS-CPLN-A_01_116.dwg | |