

*Atlantic Sunrise Project – PA DEP Chapter 105 Joint Permit Application
Transcontinental Gas Pipe Line Company, LLC
Columbia County*

**ATTACHMENT P -1
ALTERNATIVES ANALYSIS**

Revised April 2017

1.0	Introduction	1
2.0	No Action Alternative	1
3.0	Transco Existing System Alternative.....	2
4.0	Development of the Proposed Route.....	6
4.1	Route Start and End Points	6
4.2	Selecting the North Endpoint of CPL North	6
4.3	Selecting the Tie-In Location between CPL North, CPL South, and Existing Leidy Line System	6
4.4	Selecting the Tie-In Location between CPL South and the Existing Transco Mainline .	7
4.5	Routing Alternatives & Proposed Route Selection	8
5.0	Impact Avoidance and Minimization Measures	11
6.0	Atlantic Sunrise Major Route Alternatives – Central Penn Lines	13
6.1	Diamond CPL North Alternative.....	13
6.2	Williams Midstream CPL North Alternative	16
6.3	Western CPL South Alternative	19
7.0	Columbia County Specific Route Alternatives.....	24
7.1	CPL South Alternative 2	24
7.2	CPL South Alternative 3	29
7.3	CPL South Alternative 8	33
7.4	CPL South Alternative 9	37
7.4	CPL South Alternative 24D	41
8.0	Route Deviations Considered.....	44
9.0	Wetland and Waterbody Construction Alternatives	46

*Atlantic Sunrise Project – PA DEP Chapter 105 Joint Permit Application
Transcontinental Gas Pipe Line Company, LLC
Columbia County*

**Appendix P-1 Stream and Wetland Avoidance and Minimization Measures Identified for the
Project in Columbia County**

Appendix P-2 Trenchless Crossing Analysis, Central Penn Line Columbia County, Pennsylvania

Appendix P-3 Co-Location of Pipeline Facilities

1.0 INTRODUCTION

This Alternatives Analysis report describes the alternatives considered or currently under consideration for the proposed Atlantic Sunrise Project. This report discusses the following categories of alternatives: the no-action alternative, system alternatives, route alternatives, and construction alternatives. Additionally, Sections 7 and 8 herein consider Columbia County minor route alternatives and deviations.

The objective of Transcontinental Gas Pipe Line Company's (Transco's) alternatives analysis is to develop proposed pipeline routes that will be constructible, accomplish the Project's purpose, and will avoid or minimize potential adverse environmental impacts. This alternatives analysis was also developed to be consistent with the Federal Energy Regulatory Commission's regulatory requirements as set forth in 18 Code of Federal Regulations 380.15 and 25 PA. Code § 105.13(e)(viii). Thus, it contains a detailed analysis of alternatives to the proposed action, including alternative locations, routings or designs to avoid or minimize environmental impacts.

The information contained in this report is based upon field surveys, desktop review of available literature, stakeholder input, and publicly available information regarding existing pipeline infrastructure. Comparison analysis of the alternatives discussed in this report is based on rights-of-way (ROW) width assumptions and available data sets for desktop analysis.

2.0 NO-ACTION ALTERNATIVE

This section describes the benefits and consequences of not constructing the Project. For example, if Transco does not construct the Project, temporary and permanent environmental impacts associated with construction and operation would be avoided. However, by not constructing the Project, Transco would not be able to provide the natural gas transportation service requested by the customers that have executed binding agreements for Transco to provide 1.7 million dekatherms per day (MMDth/d) of incremental firm transportation of natural gas from the Marcellus Shale production areas in northern Pennsylvania to its existing market areas, extending to as far south as the Station 85 Pooling Point¹ in Choctaw County, Alabama. The no-action alternative would not result in increased access to reliable, domestic natural gas supplies from the Marcellus Shale production areas. Transco's review of existing and available energy sources indicates that natural gas is the best fuel source to provide clean, reliable energy necessary to meet existing and future demand while minimizing environmental impacts.

The existing Transco facilities in or near the Project area are not currently designed to transport natural gas from north to south and do not provide adequate pipeline takeaway capacity for transportation of natural gas to meet current transportation demand. If the no-action alternative is selected, Transco's customers will need to:

- Seek other transportation services;
- Forgo meeting their natural gas demand until energy conservation measures stabilize or decrease demand, possibly limiting their growth and the growth of the local economies they serve; and
- Depend on other future development projects with unpredictable schedules and undetermined environmental impacts.

For the reasons described above, the no-action alternative does not meet the Project objectives of providing the additional transportation capacity of natural gas requested by its customers within the time frame required.

3.0 TRANSCO EXISTING SYSTEM ALTERNATIVE

The Transco Existing System Alternative (Figure P-1) would utilize the existing ROWs of Transco's Leidy Line and Mainline systems to the extent practicable by installing noncontiguous pipeline looping and other facilities along these systems. This alternative incorporates a segment of the current proposed CPL North route, from the Zick Meter Station at about milepost (MP) 57.33, to the proposed North Diamond Regulator Station near MP L92.7 in Luzerne County, Pennsylvania. From this point, the alternative route runs east along the Leidy Line system to existing Compressor Station 515 in Luzerne County, Pennsylvania. An additional Leidy Line loop would be required between existing Compressor Stations 517 and 515 to accommodate volumes moving eastward. East of Compressor Station 515, several sections of looping would be required to transport the incremental volumes along the Leidy Line and Transco Mainline systems.

The proposed Unity Loop, Chapman Loop, and horsepower additions at Compressor Stations 517, 520 and 190 would still be required. Similarly, facilities located south of Compressor Station 195 (i.e., pipeline replacements in Virginia and aboveground facility modifications in Maryland, Virginia, North Carolina, and South Carolina) would also be required for the Transco

Existing System Alternative to meet the purpose and need for the Project. Facilities that are common between the Project and the Transco Existing System Alternative are presented below in underlined text to distinguish them from the facilities unique to the Transco Existing System Alternative. This alternative is depicted as Figure P-1.

The following facilities would be necessary for the Transco Existing System Alternative:

- Greenfield Pipeline
 - 36.2 miles of new 30-inch-diameter greenfield pipeline in Pennsylvania from the Zick Meter Station to the North Diamond Regulator Station.
- Looping Pipeline
 - 8.6 miles of new 42-inch-diameter looping in Lycoming County, Pennsylvania (Unity Loop).
 - 2.9 miles of new 36-inch-diameter looping in Clinton County, Pennsylvania (Chapman Loop).
 - 23.7 miles of new 42-inch-diameter loop from MP L92.7 to Station 515 in Luzerne County, Pennsylvania.
 - 8.6 miles of new 42-inch-diameter loop from MP LL7.7 4 to MP LL9.0 in Luzerne County, Pennsylvania.
 - 8.3 miles of new 42-inch-diameter loop from Station 515 to L60.7 in Luzerne County and Monroe County, Pennsylvania.
 - 14.8 miles of new 42-inch-diameter loop from L57.5 to L42.7 in Monroe County, Pennsylvania.
 - 30.3 miles of new 42-inch-diameter loop from Transco Delaware Regulator Station to Centerville Regulator Station (includes Delaware River Crossing) in Northampton County, Somerset County, and Warren County, New Jersey, and Northampton County, Pennsylvania.
 - 16.6 miles of new 42-inch-diameter loop from Transco Centerville Regulator Station to Transco Station 205 in Somerset County and Mercer County, New Jersey.
 - 7.7 miles of new 42-inch-diameter loop from MP 1765.7 to Station 205 in Mercer County, New Jersey.
 - 43.0 miles of new 42-inch-diameter loop from Station 200 to MP 1765.3 in

Mercer County, New Jersey, and Bucks County, Pennsylvania.

- 39.6 miles of new 42-inch diameter loop from MP 1682.7 to Station 200 in Chester County and Lancaster County, Pennsylvania.
- 4.8 miles of new 42-inch-diameter loop from Station 195 to MP 1679.3 in York County, Pennsylvania.
- Pipeline Replacement
 - 2.5 miles of 30-inch-diameter pipeline replacements between Transco Mainline MP 1578.7 and 1581.0 in Prince William County, Virginia.
- Greenfield Compressor Station
 - One new 30,000-horsepower (hp) compressor station in Wyoming County, Pennsylvania (Station 605).
- Horsepower Additions at Existing Transco Compressor Stations
 - One new 16,000-hp compressor unit at Station 520 in Lycoming County, Pennsylvania.
 - One new 16,000-hp compressor unit at Station 517 in Columbia County, Pennsylvania.
 - One new 16,000-hp compressor unit and one new 30,000-hp compressor unit at Station 515 in Luzerne County, Pennsylvania.
 - One new 30,000-hp compressor unit at Station 200 in Chester County, Pennsylvania.
 - One new 15,000-hp compressor unit at Station 195 in York County, Pennsylvania.
 - One new 30,000-hp compressor unit at Station 190 in Howard County, Maryland.
- Additional ancillary facilities, such as MLVs, cathodic protection, communication facilities, and internal inspection device (i.e., pig) launchers and receivers in Pennsylvania.
- Two new meter stations and three new regulator stations with interconnecting piping in Pennsylvania.
- Modifications to six existing compressor stations that enable compression for bidirectional flow in Maryland, Virginia, and North Carolina;

- Installation of deodorization/odor masking equipment at four existing compressor stations in North Carolina
- Supplemental odorization, odor detection, and/or odor masking/deodorization equipment at 42 meter/regulator stations in North Carolina and South Carolina; and
- Odor masking/deodorization equipment at 14 MLV locations in North Carolina and South Carolina.

Transco did not select this system alternative due to the following constraints:

- The alternative would require construction of about 51.1 miles of additional pipeline along the Transco Mainline and Leidy Line systems. The longer distance of this route would require more total land than the Project for construction and would increase impacts on land uses, especially on forest lands, wetlands, waterbodies, and major waterbodies. As indicated above, the Chapman Loop would still be needed for this alternative.
- Pipeline looping along Transco's existing Mainline System would locate pipeline in proximity to areas of high population density, including: Wilkes-Barre, Pennsylvania; Trenton, New Jersey; and Princeton, New Jersey. Therefore, colocation with the existing Mainline System would not be possible for all pipeline looping.
- Looping along these areas would result in greater impacts on residential and other developed areas with a 15 times greater occurrence of residential structures located within 50 feet of construction workspace.
- High densities of residential developments in proximity to the existing pipeline facilities would likely require acquisition of residential properties to allow the addition of a pipeline loop within Transco's existing Mainline System ROWs.
- The alternative would require 183,000 hp of compression, which is 51,000 hp more than the Project.

Due to the increased horsepower and looping required and the associated increase in residential impacts, this alternative was removed from further consideration.

4.0 DEVELOPMENT OF THE PROPOSED ROUTE

Based on the commercial aspects of the Project, Transco evaluated start and endpoints for the Project and identified potential route alternatives between the start and endpoints of the Central Penn Line. This section provides the framework used to define the route start and endpoints of the Central Penn Line, as well as selection of the proposed route.

4.1 Route Start and Endpoints

The locations that Transco evaluated for start and endpoints were based on the need to meet the stated purpose of the Project while maximizing the use of existing Transco infrastructure for efficiency and reliability and to minimize the amount of incremental facilities required. Using these parameters, Transco designed the Project to have the capacity to receive up to 1.7 MMDth/d of natural gas from both new receipt points on CPL North and from existing receipt points along the Leidy Line system.

4.2 Selecting the North Endpoint of CPL North

New receipt points on CPL North include the Zick and Springville Meter Station in Susquehanna County, Pennsylvania, which can provide approximately 850,000 dekatherms per day (Dth/d) from interconnecting midstream pipelines. As it is the northernmost receipt point, Transco determined that the Zick Meter Station will serve as the northern endpoint of the pipeline route.

4.3 Selecting the Tie-In Location between CPL North, CPL South, and Existing Leidy Line System

In addition to the 850,000 Dth/d received on CPL North, the remaining 850,000 Dth/d will be received through various receipt points along Transco's existing Leidy Line system, and the full 1.7 MMDth/d will be aggregated into CPL South. CPL North and existing Leidy Line A share a corridor that rejoins Leidy Line system pipelines B, C, and D at MP L113.7. This is the easternmost location of the preferred aggregation point. Compressor Station 517 is located at MP L115.2 and defines the westernmost location of the aggregation point. Aggregating volumes on the discharge (east) side of Compressor Station 517 optimizes the horsepower at the station, providing higher pressure into CPL South. Therefore, an aggregation point between MP L113.7 and L115.2 is preferred. Transco determined MP L114.0 to be the ideal point within this range, as it would shorten the length of the CPL North

pipeline. Furthermore, if the aggregation point were located west of Compressor Station 517 at approximately MP L123.0, an additional 25,000 hp would be required at proposed Compressor Station 610 as lower suction pressure gas would be entering the station piping. Consequently, this reinforces Transco's proposed tie-in location between MP L113.7 and MP L115.2.

4.4 Selecting the Tie-In Location between CPL South and the Existing Transco Mainline

The southern endpoint of CPL South must tie into Transco's existing Mainline system in order to serve its existing market areas. To minimize the amount of additional facilities needed to meet the Project's purpose, Transco determined that the optimal hydraulic endpoint of the pipeline route is between MP 1674.6 (existing Compressor Station 195) and MP 1683.7 of the Transco Mainline system. However, extending south of MP 1679.8 would necessitate an additional crossing of the Susquehanna River, for which Transco was not able to find a suitable crossing location. Therefore, Transco determined the optimal range to be between MP 1679.8 and 1683.7. The proposed route for CPL South ties into the existing Transco Mainline system at MP 1683.3.

Any system tie-ins north of MP 1683.7 would require additional mainline facilities (mainline looping and/or compression) between existing Compressor Station 195 and the tie-in location. For example, Transco evaluated a tie-in point near MP 1686.4, located 3.10 miles northeast of the current proposed tie-in. Transco's hydraulic study determined that a tie-in at this location would require an additional 4,000 hp at existing Compressor Station 195, as well as compressor re-wheeling and modifications to two existing reciprocating compressors to operate the higher differential pressure. Alternatively, an approximately 4-mile-long loop would be required between MP 1682.4 and MP 1686.4. Any tie-in point further northeast than MP 1686.4 would necessitate additional incremental facilities, such as additional compression, looping, or some combination of the two.

4.5 Routing Alternatives & Proposed Route Selection

Transco identified certain routing constraints and sensitive areas requiring detailed analysis to ensure avoidance or minimization of impacts when evaluating alternatives and selecting the proposed pipeline routes.

When identifying routing options, Transco attempted to co-locate the pipeline with existing utility corridors and ROWs while considering impacts on other environmental factors. The use of co-location as a principal design element is consistent with the FERC guidelines, which stress the corridor concept, and complements the existing land use characteristics in the Project area. Siting pipeline facilities along existing corridors reduces the need to establish new corridors in previously undisturbed areas, which reduces the amount of fragmentation of interior forest and minimizes the number of affected landowners. Transco defines co-location as siting a pipeline right-of-way (ROW) that:

- Lies within an existing ROW or easement; or
- Abuts an existing ROW or easement.

The following routing considerations also influenced the development of the proposed routes:

- Identifying crossing locations of the Susquehanna River where, based on terrain, horizontal directional drilling (HDD) appeared to be technically feasible;
- Minimizing visual impacts on the Appalachian Trail;
- Crossing areas of significant topographic relief where technically feasible;
- Avoiding state lands, including state parks, state forests, and state game lands to the maximum extent practicable; and
- Avoiding densely populated areas to the extent practicable.

Transco's pipeline route selection process considered three types of route alternatives:

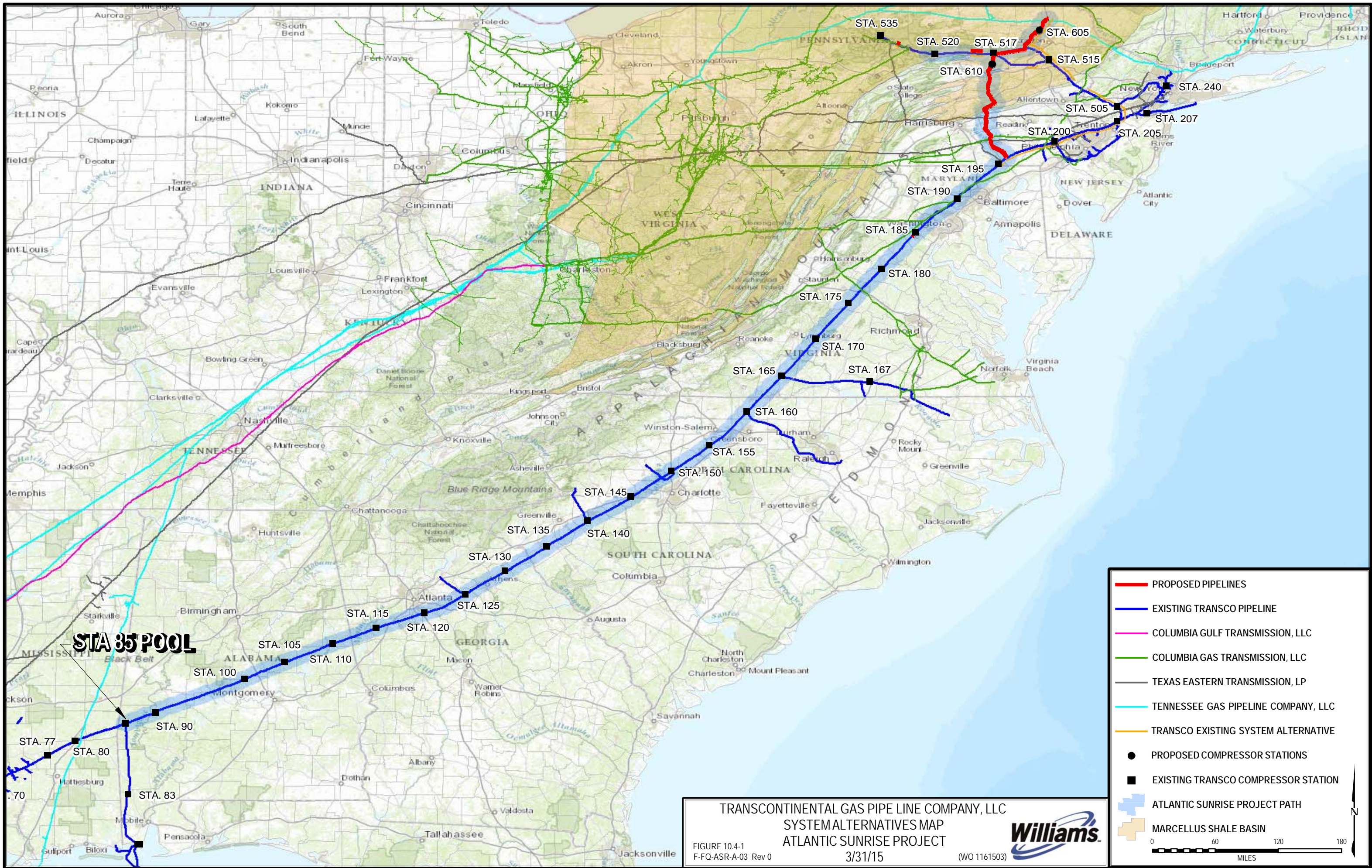
- Major route alternative – a route that differs substantially in both length and distance from the proposed route, which are described in Section 6.0 and are presented on an entire Project basis for the overall Atlantic Sunrise Project;
- Minor route alternative – a route that deviates from short segments of the proposed route which are described in Section 7.0 and are presented on a County basis related to the specific permit application for which this Attachment P is prepared for; and
- Route deviation – minor adjustments to the proposed route, typically to avoid specific features (e.g., topography, sensitive habitat, structures), summarized in Table P-1 for CPL North and CPL South.

After taking the above into consideration, Transco narrowed its analysis to 600-foot-wide study corridors for the CPL North and CPL South pipeline routes, which were determined based on desktop data and aerial reconnaissance (helicopter overflights). Once this initial routing process was complete, Transco began field routing efforts within these study corridors. These field efforts began in May 2014 and continued up to the submittal of this application. A detailed discussion on the field routing process and impact avoidance and minimization measures undertaken as part of the Project are described in Section 5.0 of this Alternatives Analysis.

In addition to route adjustments based on field routing, biological and cultural resource surveys, Transco considered alternatives requested by landowners and other stakeholders through stakeholder outreach, commencing with Transco's open houses held in May and June of 2014. Transco reviewed each requested route adjustment for feasibility as a viable alternative based on the Project route, constructability, and the minimization of impacts on sensitive resources.

Transco used various data sources to identify and evaluate pipeline route alternatives, including: observations made during routing surveys and field reconnaissance; Google Earth™; geographic information system databases from county, state, and federal sources; recently produced aerial photography; U.S. Geological Survey (USGS) topographic maps; National Wetland Inventory maps; and remote-sensing data. The factors used to select the proposed routes over the alternative routes focused on FERC scoping information, landowner concerns, minimizing the number of affected landowners, minimizing adverse environmental impacts, ensuring constructability, and promoting safety.

FIGURE 1



STA 85 POOL

TRANSCONTINENTAL GAS PIPE LINE COMPANY, LLC
 SYSTEM ALTERNATIVES MAP
 ATLANTIC SUNRISE PROJECT
 FIGURE 10.4-1
 F-FQ-ASR-A-03 Rev 0
 3/31/15
 (WO 1161503)



—	PROPOSED PIPELINES
—	EXISTING TRANSCO PIPELINE
—	COLUMBIA GULF TRANSMISSION, LLC
—	COLUMBIA GAS TRANSMISSION, LLC
—	TEXAS EASTERN TRANSMISSION, LP
—	TENNESSEE GAS PIPELINE COMPANY, LLC
—	TRANSCO EXISTING SYSTEM ALTERNATIVE
●	PROPOSED COMPRESSOR STATIONS
■	EXISTING TRANSCO COMPRESSOR STATION
+	ATLANTIC SUNRISE PROJECT PATH
+	MARCELLUS SHALE BASIN

0 60 120 180
MILES

5.0 IMPACT AVOIDANCE AND MINIMIZATION MEASURES

Due to the linear nature of the Project, it is not possible to completely avoid impacts to wetlands, waterbodies, or other sensitive resources. Therefore, Transco used a comprehensive field routing process to identify a constructible alignment for CPL North and CPL South that would minimize impacts to wetlands, waterbodies, or other sensitive resources to the extent practicable. A similar approach was taken on the Chapman and Unity Loops; however, in these cases routing options were limited to the north or south side of the existing right-of-way to maximize opportunities for co-location. Impact minimization and avoidance has been accomplished with field routing teams comprised of engineering, construction, and environmental specialists. These teams are assessing the routes with regard to the following considerations:

Engineering

- Avoiding general engineering and constructability constraints;
- Minimizing route distance along steep slopes and side slopes;
- Reducing the number of severe pipeline bends and turning angles;
- Identifying and avoiding, where practicable, areas of karst topography;
- Identifying and evaluating opportunities for utilizing trenchless technology such as HDD and boring; and
- Identifying and avoiding, where practicable, locations with a potential need for blasting.

Environmental

- Minimizing impacts at any single wetland crossing to 1 acre or less wherever practicable;
- Avoiding or minimizing impacts on forested wetlands and other wetlands;
- Avoiding or minimizing impacts on known threatened and endangered species habitat, such as:
 - Rocky talus slopes potentially used as habitat by the timber rattlesnake (*Crotalus horridus*), Allegheny woodrat (*Neotoma magister*), and small-footed bat (*Myotis leibii*);
 - Wetland complexes with features suggesting potential suitability as bog turtle habitat; and

- Palustrine emergent wetlands surrounded by woodlands, which may be suitable habitat for the northeastern bulrush (*Scirpus ancistrochaetus*)
- Forest stands containing trees greater than 5 inches diameter at breast height with exfoliating bark, cracks, crevices, and/or hollows. Prime examples would include live shagbark hickory trees (*Carya ovata*) and shellbark hickory trees (*C. laciniosa*), dead elms (*Ulmus* spp.), dead poplars (*Populus* spp.), or any tree with a rotted-out cavity, which may be potential roosting trees or suitable habitat for the Indiana bat (*Myotis sodalis*) and northern long-eared bat (*Myotis septentrionalis*).
- Crossing waterbodies at 90 degree angles to minimize in-stream disturbance wherever practicable;
- Avoiding or minimizing crossings of major waterbodies;
- Minimizing impacts on contiguous upland forest by routing the centerline along tree lines or through existing cleared areas to the greatest extent practicable; and
- Identifying and avoiding, where practicable, groundwater springs/seeps.

Land

- Minimizing impacts on private property and structures;
- Minimizing conflicts with land use; and
- Minimizing impacts on residential water wells and septic systems.

Cultural

- Avoiding or minimizing impacts on sites listed on or potentially eligible for listing on the National Register of Historic Places; and
- Identifying and avoiding, where practicable, aboveground structures that appeared to be over 50 years old.

Transco initiated routing surveys within the 600-foot-wide study corridors in May 2014 and has continued the routing process through 2016 as survey permission has been granted. **At the time of the submission of this application, field survey of the proposed Project footprint within Columbia County is 100 percent complete – no outstanding parcels or remotely sensed resources remain to be surveyed.**

The routing survey crews started with a preliminary pipeline route centered within the 600-foot-wide study corridors. The preliminary pipeline route was either confirmed as adequate or adjusted to avoid and/or minimize, to the extent practicable, any issues encountered during the routing surveys according to the considerations noted above. The routing survey teams documented the reasons for the adjustments and classified them according to the engineering, environmental, land, and cultural considerations evaluated. **Appendix P-1 provides the results of stream and wetland avoidance and minimization measures identified for the Project in Columbia County by the routing survey crews.**

6.0 ATLANTIC SUNRISE MAJOR ROUTE ALTERNATIVES – CENTRAL PENN LINES

Major route alternatives differ substantially in both length and distance from the proposed route. During the Project development process, Transco considered three major route alternatives before selecting its 600-foot-wide study corridors and proposed routes: the Diamond CPL North Alternative, Williams Midstream CPL North Alternative, and Western CPL South Alternative.

Each of the major route alternatives is described below. Transco did not complete full hydraulic modeling, nor did it evaluate costs for any of the major alternatives, because those alternatives have significantly greater environmental impacts than proposed routes for CPL North and CPL South. Figure P-2 shows the major alternatives in relation to the proposed routes.

6.1 Diamond CPL North Alternative

The Diamond CPL North Alternative⁶ starts at the Zick Meter Station in Susquehanna County, Pennsylvania. The route continues south for approximately 80 miles, bisecting Transco's existing Leidy Line A to the north and Leidy Lines B and C to the south and terminates near MP 93.2 of the CPL South route in Columbia County, Pennsylvania.

Approximately 48 miles of the route is co-located with other ROW, with the remaining approximately 32 miles being primarily greenfield. The Diamond CPL North Alternative is an alternative route for CPL North, as the entire length of CPL South would still be required for this alternative, including the segment of the proposed route between MP 125.1 and MP 93.2. CPL South MP 93.2 would become the new aggregation point for Leidy Line system volumes and CPL North volumes.

The Diamond CPL North Alternative is approximately 23 miles longer than the corresponding sections of the proposed CPL North route and would likely require an additional compressor station along CPL North because it would bypass Compressor Station 517 along Transco’s Leidy Line system. Table P-2 provides a summary comparison of the Diamond CPL North Alternative to the CPL North route.

**Table P-2
 Diamond CPL North Alternative Route Comparison**

Factor	Diamond CPL North Alternative	Corresponding Section of CPL North	Difference from CPL North
Length of Corresponding Segment (miles)	79.9	57.4	+22.5
Co-location			
Length Adjacent to Interstate Pipeline ROW	0.0	21.2	-21.2
Length Adjacent to Midstream Pipeline ROW	0.0	4.8	-4.8
Length Adjacent to Electric Transmission Line ROW (miles)	47.3	0.0	+47.3
Length Adjacent to Roadway (miles)	1.4	0.1	+1.3
Total Length Co-located (miles)	48.7	26.1	+22.6
ROW Requirements			
Pipeline Construction Requirements (acres) ^a	968.4	696.0	+272.4
Pipeline Operation Requirements (acres) ^b	484.3	283.8	+200.5
Federal and State Land			
Federal Lands Crossed (number/miles)	0 / 0.0	0 / 0.0	0 / 0.0
State Lands Crossed (number/miles)	1 / 1.4	2 / 1.6	-1 / -0.2
Land Use			
Forested Land Crossed (miles) ^c	47.7	37.5	+10.2
Forested Land Impacted (construction/operation) (acres) ^d	577.4 / 288.8	456.6 / 174.7	+120.8 / +114.1
Agricultural Land Crossed (miles) ^c	23.1	15.0	+8.1
Agricultural Land Impacted (construction/operation) (acres) ^d	281.0 / 140.3	180.6 / 84.8	+100.4 / +55.5
Other Land Crossed (miles) ^{c,e}	9.1	4.9	+4.2
Other Land Impacted (construction/operation) (acres) ^{c,e}	110.0 / 55.2	58.8 / 24.3	+51.2 / +30.9
Waterbodies			
Waterbodies Crossed (number) ^f	72	51	+21

**Table P-2
 Diamond CPL North Alternative Route Comparison**

Factor	Diamond CPL North Alternative	Corresponding Section of CPL North	Difference from CPL North
Major Waterbody Crossings (number >100 feet) ^g	8	2	+6
Wetlands			
Total Wetland Complexes Crossed (number) ^h	32	15	+17
Total Wetland Crossed (miles) ^h	1.7	0.7	+1.0
Palustrine Forested Wetland Complex Impacts (construction/operation) (acres) ^h	10.2 / 5.1	7.0 / 2.7	+3.2 / +2.4
Other Physical Features			
Road Crossings (number)	122	86	+36
Railroad Crossings (number)	7	2	+5
<p>a Pipeline construction requirements based on a 100-foot-wide construction corridor and includes a 100-foot long buffer at begin and end points.</p> <p>b Pipeline operation requirements based on a 50-foot-wide corridor in greenfield segments, and a 25-foot-wide corridor for segments co-located with Transco pipelines. Calculation includes a 50-foot long buffer at begin and end points.</p> <p>c Forested land, agricultural land and other land crossed are based on geographic information system (GIS) centerline analysis using United States Geological Survey (USGS) National Land Cover Dataset (NLCD).</p> <p>d Forest land, agricultural land, and other land impacted are based on GIS corridor analysis using USGS NLCD. Since multiple land use types may be present within the corridor, impact acreage for individual land uses will not be representative of distance crossed, which is based on centerline analysis.</p> <p>e Other land based on USGS NLCD and includes land cover types: Barren Land, Developed High Intensity, Developed Low Intensity, Developed Medium Intensity, Developed Open Space, Emergent Herbaceous Wetlands, Herbaceous, Open Water, Shrub Scrub, Woody Wetlands.</p> <p>f Waterbodies identified based on National Hydrography Dataset (NHD).</p> <p>g Major waterbodies identified based on review of aerial photography.</p> <p>h Wetlands identified using the National Wetland Inventory (NWI).</p> <p>Key: CPL = Central Penn Line ROW = right-of-way</p>			

Transco did not select this alternative due, in part, to the following constraints:

- It would likely require a second new compressor station along the CPL North pipeline;

- The route crosses in proximity to Scranton, Wilkes-Barre, and Nanticoke, Pennsylvania, resulting in greater impacts on residential and other developed areas; and
- Total mileage of CPL North would increase by about 23 miles, and the length of CPL South would not be reduced.

Any configuration of the Diamond CPL North Alternative would still require construction of the portion of the alternative north of the intersection with the Leidy Line System. Due to the high density of populated areas north of the Leidy Line System, Transco did not evaluate additional configurations of the Diamond CPL North Alternative.

6.2 Williams Midstream CPL North Alternative

The Williams Midstream CPL North Alternative starts at the Zick Meter Station in Susquehanna County, Pennsylvania. The route continues west along the Williams Field Services (midstream) Appalachian Basin Area, generally co-locating with 10-inch- and 12-inch- diameter pipelines for approximately 11 miles. The majority of the route then runs adjacent to the existing Williams Field Services Springville 24-inch-diameter midstream pipeline until the route intersects with the Transco’s Leidy System, where the route is co-located four (4) miles before terminating at its connection point, near MP 21.3 on the proposed CPL North route in Luzerne County, Pennsylvania. The Williams Midstream CPL North Alternative is approximately 10.9 miles longer than the CPL North proposed route. Table P-3 provides a summary comparison of the Williams Midstream CPL North Alternative and the CPL North proposed route.

**Table P-3
 Williams Midstream CPL North Alternative Route Comparison**

Factor	Williams Midstream CPL North Alternative	Corresponding Section of CPL North	Difference from CPL North
Length of Corresponding Segment (miles)	46.2	36.0	10.2
Co-location			
Length Adjacent to Interstate Pipeline ROW	4.0	0.0	+4.0
Length Adjacent to Midstream Pipeline ROW	40.2	4.8	+35.4
Length Adjacent to Electric Transmission Line ROW (miles)	0.0	0.0	0.0
Length Adjacent to Roadway (miles)	0.0	0.1	-0.1

*Atlantic Sunrise Project – PA DEP Chapter 105 Joint Permit Application
Transcontinental Gas Pipe Line Company, LLC
Columbia County*

Factor	Williams Midstream CPL North Alternative	Corresponding Section of CPL North	Difference from CPL North
Total Length Co-located (miles)	44.2	4.9	+39.3
ROW Requirements			
Pipeline Construction Requirements (acres) ^a	560.0	436.6	+123.6
Pipeline Operation Requirements (acres) ^b	267.9	218.3	+49.7
Federal and State Land			
Federal Lands Crossed (number/miles)	0 / 0.0	0 / 0.0	0 / 0.0
State Lands Crossed (number/miles)	0 / 0.0	0 / 0.0	0 / 0.0
Land Use			
Forested Land Crossed (miles) ^c	25.6	20	+5.6
Forested Land Impacts (construction/operation) (acres) ^d	310.0 / 151.7	244.4 / 121.7	+65.6 / +30.0
Agricultural Land Crossed (miles) ^c	15.9	13.0	+2.9
Agricultural Land Impacted (construction/operation) (acres) ^d	192.4 / 92.5	156.7 / 78.7	+35.7 / +13.8
Other Land Crossed (miles) ^{c,e}	4.7	3.0	+1.7
Other Land Impacted (construction/operation) (acres) ^{d,e}	57.6 / 22.8	35.5 / 17.9	+22.1 / +4.9
Waterbodies			
Waterbodies Crossed (number) ^f	37	24	+13
Major Waterbody Crossings (number >100 feet) ^g	6	2	+4
Wetlands			
Total Wetland Complexes Crossed (number) ^h	20	10	+10
Total Wetland Crossed (miles) ^h	0.7	0.4	+0.3
Palustrine Forested Wetland Complex Impacts (construction/operation) (acres) ^h	4.2 / 1.5	3.8 / 1.9	+0.4 / -0.4
Other Physical Features			
Road Crossings (number)	65	50	+15
Railroad Crossings (number)	3	2	+1

Factor	Williams Midstream CPL North Alternative	Corresponding Section of CPL North	Difference from CPL North
<p>a Pipeline construction requirements based on a 100-foot-wide construction corridor and includes a 100-foot long buffer at begin and end points.</p> <p>b Pipeline operation requirements based on a 50-foot-wide corridor in greenfield segments, and a 25-foot-wide corridor for segments co-located with Transco pipelines. Calculation includes a 50-foot long buffer at begin and end points.</p> <p>c Forested land, agricultural land and other land crossed are based on geographic information system (GIS) centerline analysis using United States Geological Survey (USGS) National Land Cover Dataset (NLCD).</p> <p>d Forest land, agricultural land, and other land impacted are based on GIS corridor analysis using USGS NLCD. Since multiple land use types may be present within the corridor, impact acreage for individual land uses will not be representative of distance crossed, which is based on centerline analysis.</p> <p>e Other land based on USGS NLCD and includes land cover types: Barren Land, Developed High Intensity, Developed Low Intensity, Developed Medium Intensity, Developed Open Space, Emergent Herbaceous Wetlands, Herbaceous, Open Water, Shrub Scrub, Woody Wetlands.</p> <p>f Waterbodies identified based on National Hydrography Dataset (NHD).</p> <p>g Major waterbodies identified based on review of aerial photography.</p> <p>h Wetlands identified using the National Wetland Inventory (NWI).</p> <p>Key: CPL = Central Penn Line ROW = right-of-way</p>			

Transco did not select this route due to the following constraints:

- The midstream pipeline routes have several tight turns that would be impractical for the route of the 30-inch-diameter CPL North pipeline, making co-location through certain areas of the alternative infeasible; and
- The alternative crosses through more densely populated areas than the CPL North route, particularly on the south end where the alternative route is not co-located with the Springville pipeline. This would result in significant impacts on residential and other developed areas.

6.3 Western CPL South Alternative

The Western CPL South Alternative starts in Lycoming County, Pennsylvania, near MP L123.0 of the Leidy Line system. The route runs south for approximately 123 miles and terminates at the existing Transco Compressor Station 195 in York County, Pennsylvania.

Approximately 50 miles of the route is co-located with other utility ROWs, with the remaining approximately 73 miles being primarily greenfield. The Western CPL South Alternative is approximately 2 miles shorter than the CPL South proposed route.

The Western CPL South Alternative would require an extension of CPL North westward, to the west side of Compressor Station 517. This modification is required to ensure that CPL North gas volumes could enter the Leidy Line system at the prevailing system pressure. Moving the aggregation point of CPL North and Leidy Line system volumes to the west side of Compressor Station 517 would increase the horsepower required at Compressor Station 610 by 25,000 hp. Table P-4 provides a summary comparison of the Western CPL South Alternative and the CPL South proposed route.

**Table P-4
 Western CPL South Alternative Route Comparison**

Factor	Western CPL South Alternative	Corresponding Section of CPL South	Difference from CPL South
Length of Corresponding Segment (miles)	122.9	126.3	-3.4
Co-location			
Length Adjacent to Interstate Pipeline ROW (miles)	0.9	2.6	-1.7
Length Adjacent to Midstream Pipeline ROW (miles)	0.4	0.0	+0.4
Length Adjacent to Electric Transmission Line ROW (miles)	40.2	4.0	+36.2
Length Adjacent to Roadway (miles)	7.8	0.1	+7.7
Total Length Co-located (miles)	49.3	6.6	+42.7
ROW Requirements			
Pipeline Construction Requirements (acres) ^a	1,490.0	1,531.1	-41.1
Pipeline Operation Requirements (acres) ^b	742.1	765.6	-23.5
Federal and State Land			
Federal Lands Crossed (number/miles)	1 / 2.7	1 / 0.6	0 / +2.1

**Table P-4
 Western CPL South Alternative Route Comparison**

Factor	Western CPL South Alternative	Corresponding Section of CPL South	Difference from CPL South
State Lands Crossed (number/miles)	15 / 12.9	3 / 1.9	+13 / +11.0
Land Use			
Forested Land Crossed (miles) ^c	50.7	38.9	+11.8
Forested Land Impacts (construction/operation) (acres) ^d	613.6 / 306.0	469.4 / 235.1	+144.2 / +70.9
Agricultural Land Crossed (miles) ^c	52.1	76.4	-24.3
Agricultural Land Impacted (construction/operation) (acres) ^d	629.2 / 314.9	925.9 / 463.3	-296.7 / -148.4
Other Land Crossed (miles) ^{c,e}	20.1	11.0	+9.1
Other Land Impacted (construction/operation) (acres) ^{d,e}	247.2 / 121.2	135.8 / 67.2	+111.4 / +54.0
Waterbodies			
Waterbodies Crossed (number) ^f	148	99	+49
Major Waterbody Crossings (number >100 feet) ^g	11	3	+8
Wetlands			
Total Wetland Complexes Crossed (number) ^h	31	8	+23
Total Wetland Crossed (miles) ^h	1.6	0.4	+1.2
Palustrine Forested Wetland Complex Impacts (construction/operation) (acres) ^h	5.7 / 2.9	1.3 / 0.7	+4.4 / +2.2
Other Physical Features			
Road Crossings (number)	251	232	+19
Railroad Crossings (number)	13	12	+1

**Table P-4
 Western CPL South Alternative Route Comparison**

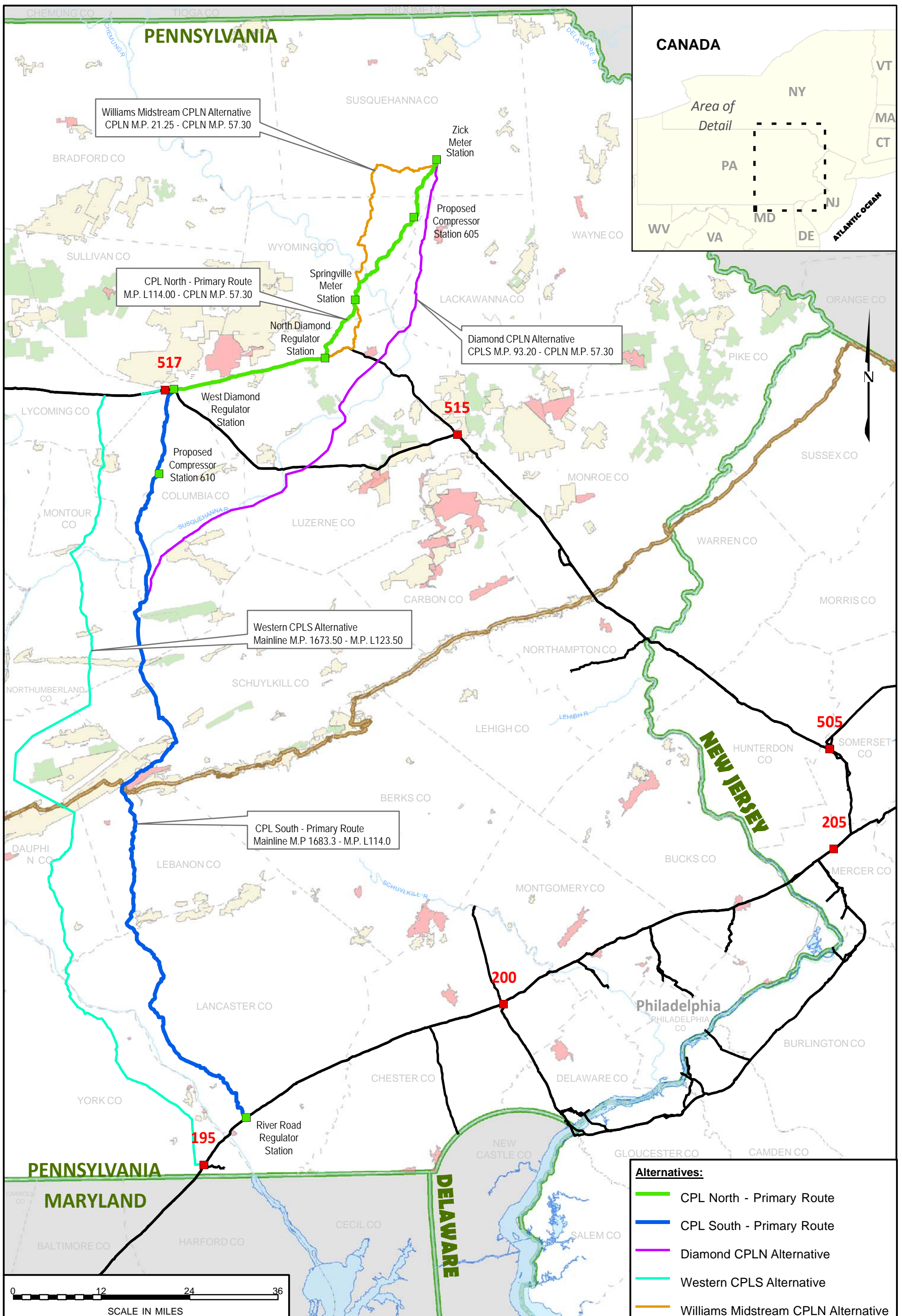
Factor	Western CPL South Alternative	Corresponding Section of CPL South	Difference from CPL South
a	Pipeline construction requirements based on a 100-foot-wide construction corridor and includes a 100-foot long buffer at begin and end points.		
b	Pipeline operation requirements based on a 50-foot-wide corridor in greenfield segments, and a 25-foot-wide corridor for segments co-located with Transco pipelines. Calculation includes a 50-foot long buffer at begin and end points.		
c	Forested land, agricultural land and other land crossed are based on geographic information system (GIS) centerline analysis using United States Geological Survey (USGS) National Land Cover Dataset (NLCD).		
d	Forest land, agricultural land, and other land impacted are based on GIS corridor analysis using USGS NLCD. Since multiple land use types may be present within the corridor, impact acreage for individual land uses will not be representative of distance crossed, which is based on centerline analysis.		
e	Other land based on USGS NLCD and includes land cover types: Barren Land, Developed High Intensity, Developed Low Intensity, Developed Medium Intensity, Developed Open Space, Emergent Herbaceous Wetlands, Herbaceous, Open Water, Shrub Scrub, Woody Wetlands.		
f	Waterbodies identified based on National Hydrography Dataset (NHD).		
g	Major waterbodies identified based on review of aerial photography.		
h	Wetlands identified using the National Wetland Inventory (NWI).		
Key: CPL = Central Penn Line ROW = right-of-way			

Transco did not select this route due to the following constraints:

- This route crosses 15 state lands, compared to three crossings of state lands for the proposed route;
- Transco engineers flew the length of the Susquehanna River as it borders Lancaster County, Pennsylvania and were unable to find a suitable location to install the pipeline across the river using HDD. A crossing of the Susquehanna River in Lancaster County would be necessary for this alternative to interconnect with the southern endpoint for the Project on the Transco Mainline system;
- The route is in proximity to Harrisburg and Hershey, Pennsylvania, resulting in increased impacts on residential and other developed areas;
- The route is in proximity to the Three Mile Island Nuclear Generating Station in Dauphin County, Pennsylvania; and

- The alternative would require an additional 25,000 hp at proposed Compressor Station 610.

FIGURE 2



- Alternatives:**
- CPL North - Primary Route
 - CPL South - Primary Route
 - Diamond CPLN Alternative
 - Western CPLS Alternative
 - Williams Midstream CPLN Alternative

Legend

APPALACHIAN TRAIL	COUNTY BOUNDARY
STATE PARK	EXISTING TRANSCO SYSTEM
STATE FOREST	EXISTING TRANSCO COMPRESSOR STATION
GAMELANDS	PROPOSED ABOVEGROUND FACILITIES
STATE BOUNDARY	

Figure 10.6-1

NO.	DATE	BY	REVISION/DESCRIPTION	NO.	DATE	BY	REVISION/DESCRIPTION
0	3/31/15	CNC	ISSUED FOR FERC FILING	1161503	BE	EL	

TRANSCONTINENTAL GAS PIPE LINE COMPANY LLC
MAJOR ROUTE ALTERNATIVE FIGURE
ATLANTIC SUNRISE PROJECT
PENNSYLVANIA & NEW JERSEY

DRAWN BY: CNC	DATE: 4/28/14	SCALE: 1" = 12 MI
CHECKED BY: BE	DATE: 4/28/14	REVISION: 0
APPROVED BY: MJH	DATE: 4/28/14	
NO. 1161503	12:35 PM	

F-EX-ASR-A-01

7.0 COLUMBIA COUNTY SPECIFIC ROUTE ALTERNATIVES

As part of developing the proposed pipeline route for the Project, Transco considered five minor alignment alternatives for the Project in Columbia County. Minor route alternatives have been developed in response to comments received from landowners, stakeholders, or to attempt to avoid or minimize impacts to sensitive resources. Identification and evaluation of minor route alternatives has been on-going since the inception of the Project. **Options for co-location has been reviewed on an ongoing basis (see Appendix P-3 for additional information on co-located areas).** Alternatives were developed as they arose during the development phase of the Project, therefore alternative numbering is not sequential per county. Furthermore, mileposts may have changed and should only be considered reference points as they may not be reflective of the current Project alignment.

7.1 CPL South Alternative 2

CPL South Alternative 2 was developed to maximize co-location with an existing electric transmission corridor. Upon evaluation of the route, Transco determined that co-location with the corridor was not feasible due to an active strip mining operation; therefore this alternative is no longer being considered and will not be evaluated further. The location of CPL South Alternative 2 is shown in Figure P-3, and Table P-5 provides a comparison of CPL South Alternative 2 with the corresponding segment of the October 2014 route. Since the CPL South Alternative 2 was only compared to the October 2014 route and was removed from further consideration, it was not compared to the current route provided in this application.

**Table P-5
 CPL South Alternative 2
 Minor Route Alternatives Comparison**

Factor	CPL South Alternative 2 (proposed route)	Corresponding Section of October 2014 Route	Difference from October 2014 Route
Length of corresponding segment (miles)	5.3	5.8	-0.5
Co-location			
Length adjacent to Interstate Pipeline ROW (miles)	0.0	0.0	0.0
Length adjacent to Midstream Pipeline ROW (miles)	0.0	0.0	0.0

Table P-5
CPL South Alternative 2
Minor Route Alternatives Comparison

Factor	CPL South Alternative 2 (proposed route)	Corresponding Section of October 2014 Route	Difference from October 2014 Route
Length adjacent to electric transmission line ROW (miles)	0.0	0.0	0.0
Length adjacent to roadway (miles)	0.2	0.0	+0.2
Total length co-located (miles)	0.2	0.0	+0.2
ROW Requirements			
Pipeline construction requirements (acres) ^a	64.2	70.3	-6.0
Pipeline operation requirements (acres) ^b	32.1	35.2	-3.0
Federal and State Land			
Federal lands crossed (number / miles)	0 / 0.0	0 / 0.0	0 / 0.0
State lands crossed (number / miles)	0 / 0.0	0 / 0.0	0 / 0.0
Land Use			
Forested land crossed (miles) ^c	2.6	3.1	-0.5
Forested land impacts (construction / operation) (acres) ^d	31.3 / 15.6	38.7 / 19.2	-7.4 / -3.6
Forest interior crossed (miles) ^e	0.0	< 0.1	< -0.1
Forest interior impacts (construction / operation) (acres) ^{d,e}	0.0 / 0.0	0.1 / <0.1	-0.1 / < -0.1
Agricultural land crossed (miles) ^c	2.5	2.4	+0.1
Agricultural land impacted (construction / operation) (acres) ^d	30.8 / 15.4	28.1 / 14.2	+2.7 / +1.2
Other Land Crossed (miles) ^{c,f}	0.2	0.3	-0.1
Other Land Impacted (construction/operation) (acres) ^{d,f}	2.1 / 1.1	3.5 / 1.8	-1.4 / -0.7
Residences within 50 feet of the construction workspace (number) ^g	0	0	0
Landfills, quarries, and other mining operations within 0.25 mile (number)	2	2	0
Waterbodies			
Waterbodies crossed (number) ^h	3	3	0

Table P-5
CPL South Alternative 2
Minor Route Alternatives Comparison

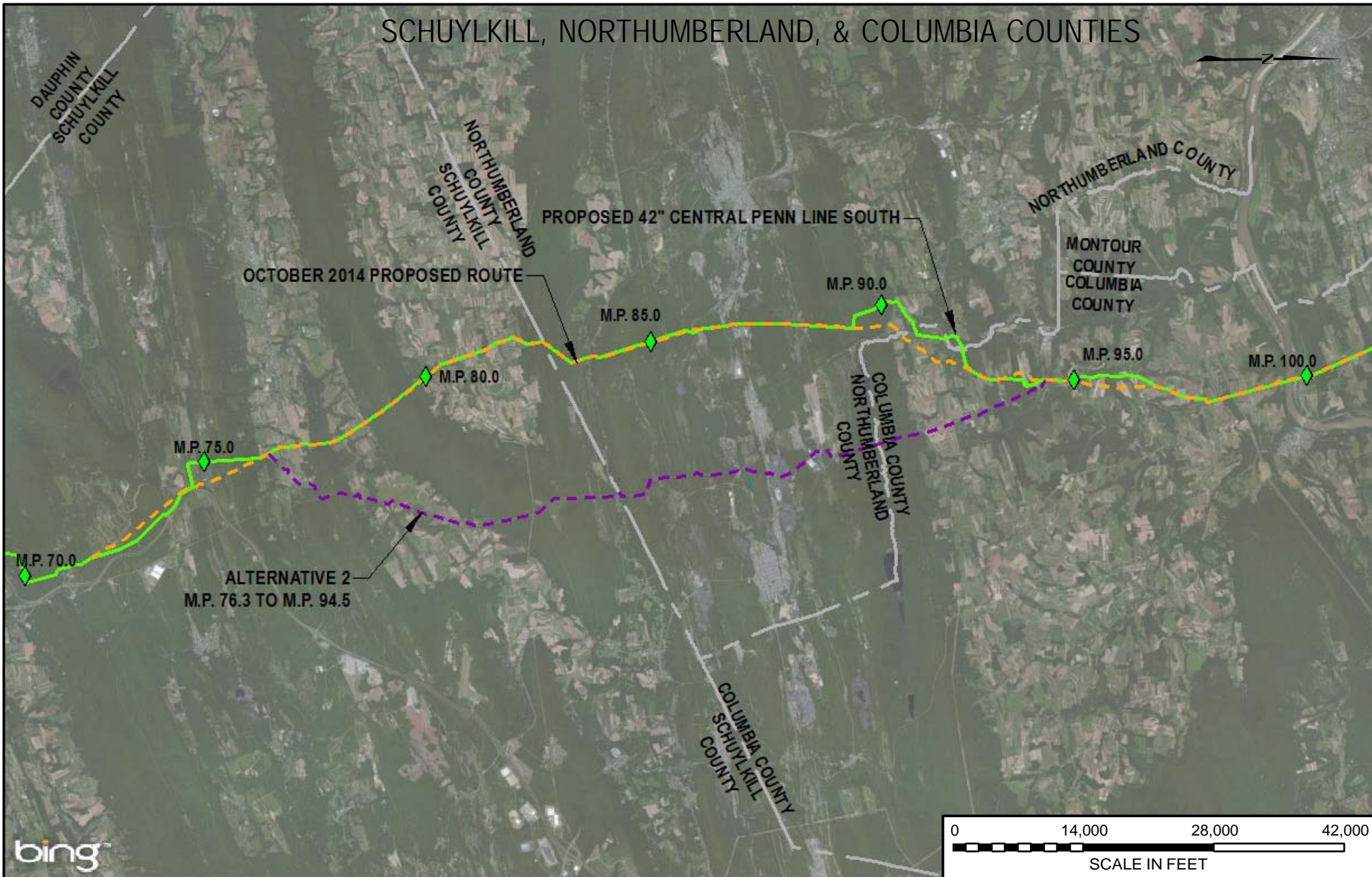
Factor	CPL South Alternative 2 (proposed route)	Corresponding Section of October 2014 Route	Difference from October 2014 Route
Major waterbody crossings (number >100 feet) ⁱ	1	1	0
Wetlands			
Total wetland complexes crossed (number) ^j	0	1	-1
Total wetland crossed (miles)	0.0	0.1	-0.1
Palustrine forested wetland complex impacts (construction / operation) (acres) ^j	0.0 / 0.0	0.7 / 0.0	-0.7 / 0.0
Cultural Resources			
Sites crossed that are eligible or potentially eligible for listing on the National Register of Historic Places (number) ^k	0	0	0
Other Physical Features			
Road crossings (number)	4	7	-3
Railroad crossings (number)	1	1	0
Other Environmental Features			
Steep slopes crossed (30 degrees or greater) (miles) ^l	0.0	< 0.1	< -0.1
Side slope construction (miles) ^m	0.0	0.1	-0.1

Table P-5
CPL South Alternative 2
Minor Route Alternatives Comparison

Factor	CPL South Alternative 2 (proposed route)	Corresponding Section of October 2014 Route	Difference from October 2014 Route
a	Pipeline construction requirements based on a 100-foot-wide construction corridor and includes a 100-foot long buffer at begin and end points.		
b	Pipeline operation requirements based on a 50-foot-wide corridor in greenfield segments, and a 25-foot-wide corridor for segments co-located with Transco pipelines. Calculation includes a 50-foot long buffer at begin and end points.		
c	Forested land, forest interior, agricultural land and other land crossed are based on geographic information system (GIS) centerline analysis using United States Geological Survey (USGS) National Land Cover Dataset (NLCD).		
d	Forest land, forest interior, agricultural land, and other land impacted are based on GIS corridor analysis using USGS NLCD. Since multiple land use types may be present within the corridor, impact acreage for individual land uses will not be representative of distance crossed, which is based on centerline analysis.		
e	Forest interior determined by assessment of forest cover from USGS NLCD, where forest interior was considered 300 feet from forest breaks and outer forest edge. Interior forest is a sub-type of Forested Land.		
f	Other land based on USGS NLCD and includes land cover types: Barren Land, Developed High Intensity, Developed Low Intensity, Developed Medium Intensity, Developed Open Space, Emergent Herbaceous Wetlands, Herbaceous, Open Water, Shrub Scrub, Woody Wetlands.		
g	Residences identified based on review of aerial photography; in cases where it was not clear whether a structure was a residence or other built feature (e.g., barn, storage facility), the structure was assumed to be a residence.		
h	Waterbodies identified based on National Hydrography Dataset.		
i	Major waterbodies identified based on review of aerial photography.		
j	Wetlands identified using the National Wetland Inventory.		
k	National Register of Historic Places sites were identified using desktop data.		
l	Length determined perpendicular to slope contour.		
m	Length determined parallel with slope contour. Developed using USGS 10-foot contours.		
Key:	CPL = Central Penn Line ROW = right-of-way		

FIGURE 3

SCHUYLKILL, NORTHUMBERLAND, & COLUMBIA COUNTIES



bing™



- LEGEND**
- PROPOSED 42" CENTRAL PENN LINE SOUTH
 - - - CPL SOUTH ALTERNATIVE 2
 - - - OCTOBER 2014 PROPOSED ROUTE
 - COUNTY BOUNDARY



DRAWING NO.	REFERENCE TITLE
	FIGURE 10D-6

TRANSCONTINENTAL GAS PIPE LINE COMPANY LLC
 CPL SOUTH ALTERNATIVE 2
 ATLANTIC SUNRISE PROJECT
 PROPOSED 42" CENTRAL PENN LINE SOUTH
 M.P. 76.33 TO M.P. 94.45
 SCHUYLKILL, NORTHUMBERLAND, & COLUMBIA COUNTIES, PENNSYLVANIA



NO.	DATE	BY	REVISION DESCRIPTION	W.O. NO.	CHK.	APP.	DRAWN BY: JTN	DATE: 3/10/15	ISSUE FOR BID:	SCALE: 1" = 14000'	
0	3/31/15	JTN	ISSUED FOR FERCFILING	1161503	DP	MJH	CHECKED BY: DP	DATE: 3/10/15	ISSUE FOR CONSTRUCTION:	REVISION: 0	
APPROVED BY: MJH							DATE: 3/10/15	DRAWING NUMBER: F-AP-CPLS-A-61			
WO: 1161503							3:44 PM 3/23/2015				

7.2 CPL South Alternative 3

CPL South Alternative 3 was developed to maximize co-location with an existing interstate pipeline and electric transmission line. Although co-located, the route would have significantly greater impacts to upland forest and interior forest thus it is no longer being considered and will not be evaluated further. Because the CPL South Alternative 3 was only compared to the October 2014 route and was removed from consideration, it was not compared to the proposed route provided in this application. The location of CPL South Alternative 3 is shown on Figure P-4 and Table P-6 provides a comparison of CPL South Alternative 3 with the corresponding segment of the October 2014 proposed route.

Table P-6
CPL South Alternative 3
Minor Route Alternatives Comparison

Factor	CPL South Alternative 3	Corresponding Section of October 2014 Route	Difference from October 2014 Route
Length of corresponding segment (miles)	19.4	18.1	+1.3
Co-location			
Length adjacent to Interstate Pipeline ROW (miles)	2.1	0.0	+2.1
Length adjacent to Midstream Pipeline ROW (miles)	0.0	0.0	0.0
Length adjacent to electric transmission line ROW (miles)	10.1	0.0	+10.1
Length adjacent to roadway (miles)	0.0	0.2	-0.2
Total length co-located (miles)	12.2	0.2	+12.0
ROW Requirements			
Pipeline construction requirements (acres) ^a	235.2	219.4	+15.8
Pipeline operation requirements (acres) ^a	111.2	109.7	+1.5
Federal and State Land			
Federal lands crossed (number / miles)	0 / 0.0	0 / 0.0	0 / 0.0
State lands crossed (number / miles)	0 / 0.0	0 / 0.0	0 / 0.0
Land Use			
Forested land crossed (miles) ^b	7.7	4.4	+3.3
Forested land impacts (construction / operation) (acres) ^c	92.1 / 40.8	53.1 / 26.4	+39.0 / +14.4
Forest interior crossed (miles) ^d	0.2	0.1	+0.1

Table P-6
CPL South Alternative 3
Minor Route Alternatives Comparison

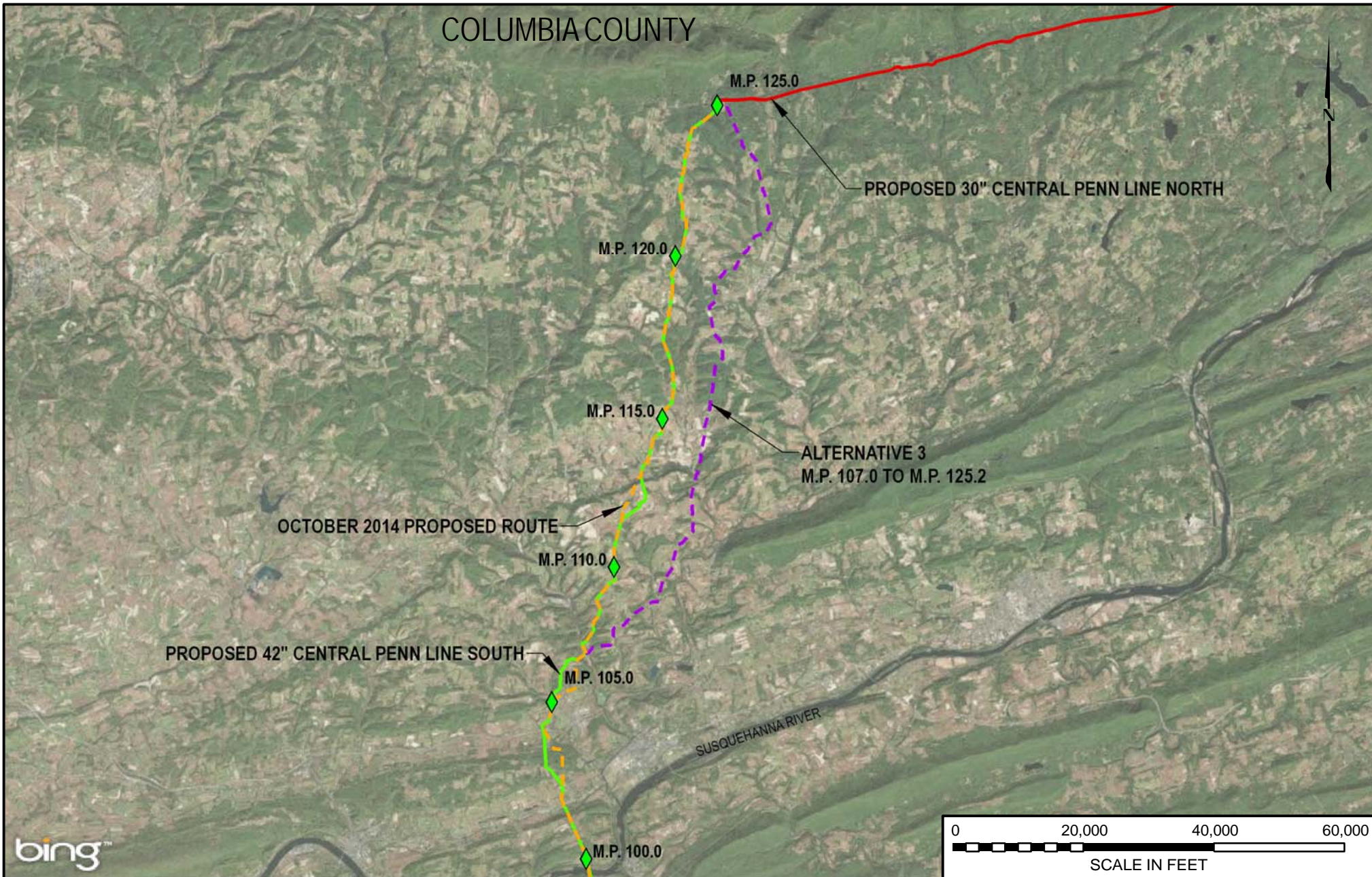
Factor	CPL South Alternative 3	Corresponding Section of October 2014 Route	Difference from October 2014 Route
Forest interior impacts (construction / operation) (acres) ^{d,e}	1.7 / 0.8	0.9 / 0.5	+0.8 / +0.3
Agricultural land crossed (miles) ^e	10.7	12.7	-2.0
Agricultural land impacted (construction / operation) (acres) ^e	130.7 / 64.5	153.2 / 76.7	-22.5 / -12.2
Other Land Crossed (miles) ^{e,f}	1.0	1.0	0.0
Other Land Impacted (construction/operation) (acres) ^{d,f}	12.4 / 5.9	13.1 / 6.6	-0.7 / -0.7
Residences within 50 feet of the construction workspace (number) ^g	4	1	+3
Landfills, quarries, and other mining operations within 0.25 mile (number)	0	0	0
Waterbodies			
Waterbodies crossed (number) ^h	10	13	-3
Major waterbody crossings (number >100 feet) ⁱ	0	0	0
Wetlands			
Total wetland complexes crossed (number)	0	0	0
Total wetland crossed (miles)	0.0	0.0	0.0
Palustrine forested wetland complex impacts (construction / operation) (acres) ^j	0.0 / 0.0	0.0 / 0.0	0.0 / 0.0
Cultural Resources			
Sites crossed that are eligible or potentially eligible for listing on the National Register of Historic Places (number) ^k	0	0	0
Other Physical Features			
Road crossings (number)	36	38	-2
Railroad crossings (number)	1	1	0
Other Environmental Features			
Steep slopes crossed (30 degrees or greater) (miles) ^l	0.1	0.1	0.0
Side slope construction (miles) ^m	0.3	0.1	+0.2

Table P-6
CPL South Alternative 3
Minor Route Alternatives Comparison

Factor	CPL South Alternative 3	Corresponding Section of October 2014 Route	Difference from October 2014 Route
a	Pipeline construction requirements based on a 100-foot-wide construction corridor and includes a 100-foot long buffer at begin and end points.		
b	Pipeline operation requirements based on a 50-foot-wide corridor in greenfield segments, and a 25-foot-wide corridor for segments co-located with Transco pipelines. Calculation includes a 50-foot long buffer at begin and end points.		
c	Forested land, forest interior, agricultural land and other land crossed are based on geographic information system (GIS) centerline analysis using United States Geological Survey (USGS) National Land Cover Dataset (NLCD).		
d	Forest land, forest interior, agricultural land, and other land impacted are based on GIS corridor analysis using USGS NLCD. Since multiple land use types may be present within the corridor, impact acreage for individual land uses will not be representative of distance crossed, which is based on centerline analysis.		
e	Forest interior determined by assessment of forest cover from USGS NLCD, where forest interior was considered 300 feet from forest breaks and outer forest edge. Interior forest is a sub-type of Forested Land.		
f	Other land based on USGS NLCD and includes land cover types: Barren Land, Developed High Intensity, Developed Low Intensity, Developed Medium Intensity, Developed Open Space, Emergent Herbaceous Wetlands, Herbaceous, Open Water, Shrub Scrub, Woody Wetlands.		
g	Residences identified based on review of aerial photography; in cases where it was not clear whether a structure was a residence or other built feature (e.g., barn, storage facility), the structure was assumed to be a residence.		
h	Waterbodies identified based on National Hydrography Dataset.		
i	Major waterbodies identified based on review of aerial photography.		
j	Wetlands identified using the National Wetland Inventory.		
k	National Register of Historic Places sites were identified using desktop data.		
l	Length determined perpendicular to slope contour.		
m	Length determined parallel with slope contour. Developed using USGS 10-foot contours.		
Key:	CPL = Central Penn Line		
	ROW = right-of-way		


FIGURE 4

COLUMBIA COUNTY



LEGEND


- PROPOSED 42" CENTRAL PENN LINE SOUTH
- PROPOSED 30" CENTRAL PENN LINE NORTH
- - - CPL SOUTH ALTERNATIVE 3
- - - OCTOBER 2014 PROPOSED ROUTE



**WOOD GROUP
MUSTANG, INC.**

DRAWING NO.		REFERENCE TITLE				
		FIGURE 10D-7				
NO.	DATE	BY	REVISION DESCRIPTION	WO NO	CHK	APP
0	3/31/15	JTN	ISSUED FOR FERC FILING	1161503	DP	MJH

TRANSCONTINENTAL GAS PIPE LINE COMPANY LLC
CPL SOUTH ALTERNATIVE 3
ATLANTIC SUNRISE PROJECT
PROPOSED 42" CENTRAL PENN LINE SOUTH
M.P. 106.96 TO M.P. 125.15 COLUMBIA
COUNTY, PENNSYLVANIA



DRAWN BY: JTN	DATE: 3/10/15	ISSUE FOR BID:	SCALE: 1" = 20000'
CHECKED BY: DP	DATE: 3/10/15	ISSUE FOR CONSTRUCTION:	REVISION: 0
APPROVED BY: MJH	DATE: 3/10/15	DRAWING NUMBER: F-AP-CPLS-A-62	
WO: 1161503		7:53 PM 3/23/2015	

7.3 CPL South Alternative 8

CPL South Alternative 8 (proposed route) was developed as an alternative to route the pipeline to the final proposed location for Compressor Station 610. The alternative is located in Orange and Greenwood townships, Columbia County.

CPL South Alternative 8 (proposed route) is approximately 0.3 mile longer than the October 2014 route. CPL South Alternative 8 (proposed route) reduces the amount of interior forest and upland forest crossed, but increases impacts on agricultural land. Other land use impacts associated with CPL South Alternative 8 (proposed route) are similar to those of the October 2014 route. This alternative was incorporated as part of the proposed route, given the reductions in upland forest impacts and steep slope construction. The preferred Compressor Station 610 location and CPL South Alternative 8 are shown on Figure P-5, and Table P-7 in provides a comparison of CPL South Alternative 8 with the corresponding segment of the October 2014 proposed route.

**Table P-7
 CPL South Alternative 8
 Minor Route Alternatives Comparison**

Factor	CPL South Alternative 8 (proposed route)	Corresponding Section of October 2014 Route	Difference from October 2014 Route
Length of corresponding segment (miles)	1.7	1.4	+0.3
Co-location			
Length adjacent to Interstate Pipeline ROW (miles)	0.0	0.0	0.0
Length adjacent to Midstream Pipeline ROW (miles)	0.0	0.0	0.0
Length adjacent to electric transmission line ROW (miles)	0.0	0.0	0.0
Length adjacent to roadway (miles)	0.0	0.0	0.0
Total length co-located (miles)	0.0	0.0	0.0
ROW Requirements			
Pipeline construction requirements (acres) ^a	20.6	17.0	+3.6
Pipeline operation requirements (acres) ^b	10.3	8.5	+1.8
Federal and State Land			
Federal lands crossed (number / miles)	0 / 0.0	0 / 0.0	0 / 0.0
State lands crossed (number / miles)	0 / 0.0	0 / 0.0	0 / 0.0
Land Use			
Forested land crossed (miles) ^c	0.2	0.3	-0.1

Table P-7
CPL South Alternative 8
Minor Route Alternatives Comparison

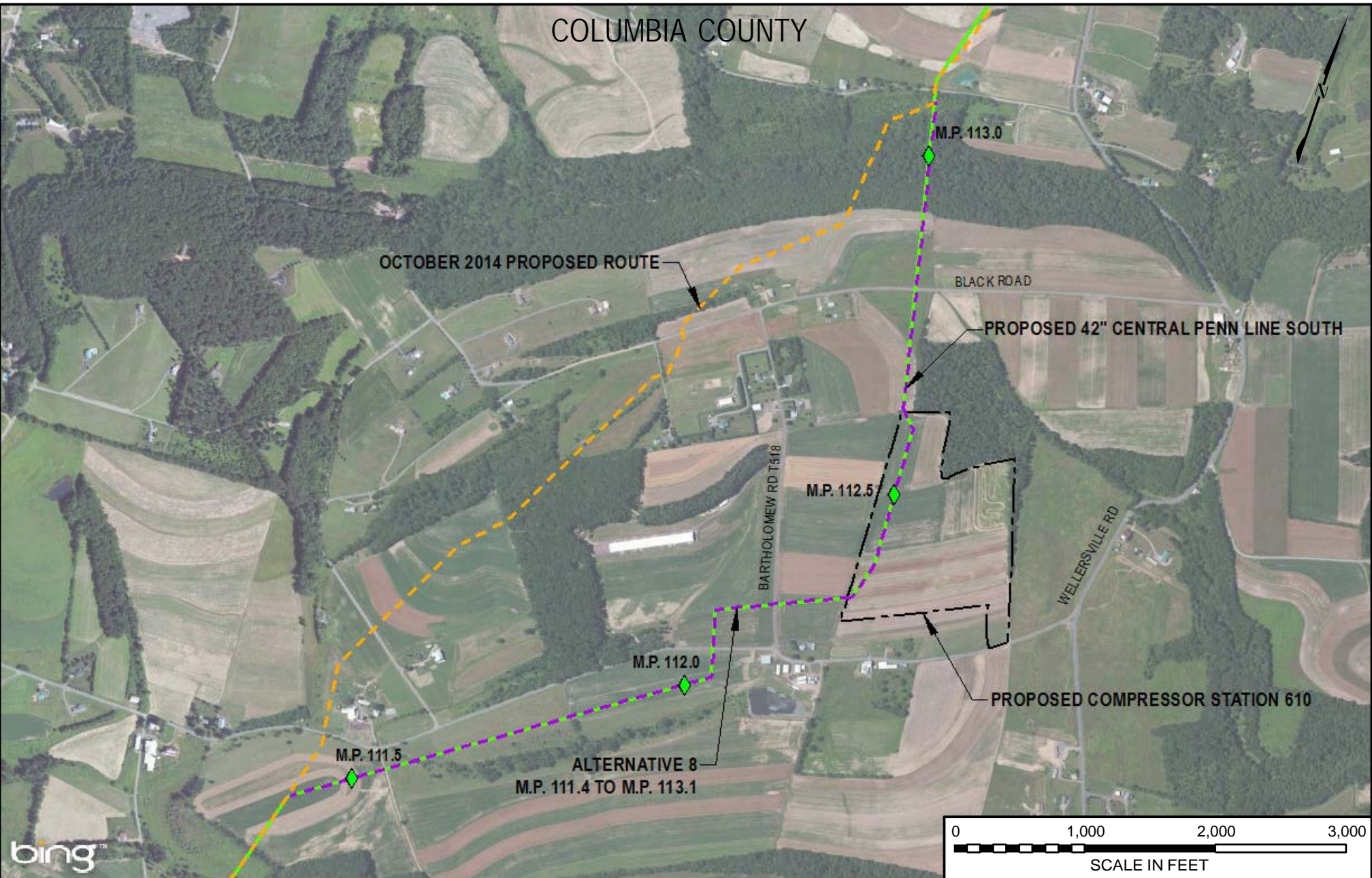
Factor	CPL South Alternative 8 (proposed route)	Corresponding Section of October 2014 Route	Difference from October 2014 Route
Forested land impacts (construction / operation) (acres) ^d	2.0 / 1.0	3.9 / 1.9	-1.9 / -0.9
Forest interior crossed (miles) ^{c,e}	0.0	0.0	0.0
Forest interior impacts (construction / operation) (acres) ^{d,e}	0.1 / 0.0	0.1 / 0.1	0.0 / -0.1
Agricultural land crossed (miles) ^c	1.4	1.1	+0.3
Agricultural land impacted (construction / operation) (acres) ^d	17.4 / 8.7	12.9 / 6.4	+4.5 / +2.3
Other Land Crossed (miles) ^{c,f}	0.1	0.0	+0.1
Other Land Impacted (construction/operation) (acres) ^{d,f}	1.2 / 0.6	0.2 / 0.2	+1.0 / +0.4
Residences within 50 feet of the construction workspace (number) ^g	0	0	0
Landfills, quarries, and other mining operations within 0.25 mile (number)	0	0	0
Waterbodies			
Waterbodies crossed (number) ^h	0	0	0
Major waterbody crossings (number >100 feet) ⁱ	0	0	0
Wetlands			
Total wetland complexes crossed (number)	0	0	0
Total wetland crossed (miles) ^j	0.0	0.0	0.0
Palustrine forested wetland complex impacts (construction / operation) (acres) ⁱ	0.0 / 0.0	0.0 / 0.0	0 / 0.0
Cultural Resources			
Sites crossed that are eligible or potentially eligible for listing on the National Register of Historic Places	0	0	0
Other Physical Features			
Road crossings (number)	4	4	0
Railroad crossings (number)	0	0	0
Other Environmental Features			
Steep slopes crossed (30 degrees or greater) (miles) ^l	< 0.1	< 0.1	0.0

Table P-7
CPL South Alternative 8
Minor Route Alternatives Comparison

Factor	CPL South Alternative 8 (proposed route)	Corresponding Section of October 2014 Route	Difference from October 2014 Route
Side slope construction (miles) ^m	< 0.1	< 0.1	0.0
<p>a Pipeline construction requirements based on a 100-foot-wide construction corridor and includes a 100-foot long buffer at begin and end points.</p> <p>b Pipeline operation requirements based on a 50-foot-wide corridor in greenfield segments, and a 25-foot-wide corridor for segments co-located with Transco pipelines. Calculation includes a 50-foot long buffer at begin and end points.</p> <p>c Forested land, forest interior, agricultural land and other land crossed are based on geographic information system (GIS) centerline analysis using United States Geological Survey (USGS) National Land Cover Dataset (NLCD).</p> <p>d Forest land, forest interior, agricultural land, and other land impacted are based on GIS corridor analysis using USGS NLCD. Since multiple land use types may be present within the corridor, impact acreage for individual land uses will not be representative of distance crossed, which is based on centerline analysis.</p> <p>e Forest interior determined by assessment of forest cover from USGS NLCD, where forest interior was considered 300 feet from forest breaks and outer forest edge. Interior forest is a sub-type of Forested Land.</p> <p>f Other land based on USGS NLCD and includes land cover types: Barren Land, Developed High Intensity, Developed Low Intensity, Developed Medium Intensity, Developed Open Space, Emergent Herbaceous Wetlands, Herbaceous, Open Water, Shrub Scrub, Woody Wetlands.</p> <p>g Residences identified based on review of aerial photography; in cases where it was not clear whether a structure was a residence or other built feature (e.g., barn, storage facility), the structure was assumed to be a residence.</p> <p>h Waterbodies identified based on National Hydrography Dataset.</p> <p>i Major waterbodies identified based on review of aerial photography.</p> <p>j Wetlands identified using the National Wetland Inventory.</p> <p>k National Register of Historic Places sites were identified using desktop data.</p> <p>l Length determined perpendicular to slope contour.</p> <p>m Length determined parallel with slope contour. Developed using USGS 10-foot contours.</p> <p>Key: CPL = Central Penn Line ROW = right-of-way</p>			

FIGURE 5

COLUMBIA COUNTY




LEGEND	
	PROPOSED 42" CENTRAL PENN LINE SOUTH
	CPL SOUTH ALTERNATIVE 8
	OCTOBER 2014 PROPOSED ROUTE
	TEMPORARY WORK SPACE



DRAWING NO.	REFERENCE TITLE
	FIGURE 10D-12

TRANSCONTINENTAL GAS PIPE LINE COMPANY LLC
 CPL SOUTH ALTERNATIVE 8
 ATLANTIC SUNRISE PROJECT
 PROPOSED 42" CENTRAL PENN LINE SOUTH
 M.P. 111.40 TO M.P. 113.10
 COLUMBIA COUNTY, PENNSYLVANIA



NO.	DATE	BY	REVISION DESCRIPTION	W.O. NO.	CHK.	APP.	DRAWN BY:	DATE:	ISSUE FOR BID:	SCALE:
0	3/31/15	JTN	ISSUED FOR FERC FILING	1161503	DP	MJH	JTN	3/10/15	ISSUE FOR CONSTRUCTION:	1" = 1000'
							DP	3/10/15	DRAWING NUMBER:	REVISION: 0
							MJH	3/10/15	F-AP-CPLS-A-67	
							WO: 1161503		6:47 AM 3/23/2015	

7.4 CPL South Alternative 9

CPL South Alternative 9 (proposed route) was developed as an alternative crossing location for Happy Valley Road and Wynn School Road due to steep slopes and to avoid residential areas. This alternative begins near MP 89.2 and ends near MP 92.7. CPL South Alternative 9 extends 3.6 miles in Coal and Ralpho townships in Northumberland County, and Cleveland Township in Columbia County. Figure P-6 shows the location of CPL South Alternative 9. Table P-8 provides a comparison of CPL South Alternative 9 with the corresponding segment of the proposed route.

CPL South Alternative 9 (proposed route) is approximately 0.8 mile longer than the October 2014 route. Due to the increased length, this alternative results in additional land impacts that are distributed over all land use types. However, this alternative crosses a similar number of waterbodies as the October 2014 route. The locations of steep slopes and road crossings in the October 2014 route resulted in constructability and safety concerns; therefore Transco incorporated CPL South Alternative 9 as part of the proposed route to avoid those concerns.

**Table P-8
 CPL North Alternative 9
 Minor Route Alternatives Comparison**

Factor	CPL South Alternative 9 (proposed route)	Corresponding Section of October 2014 Route	Difference from October 2014 Route
Length of corresponding segment (miles)	3.6	2.8	+0.8
Co-location			
Length adjacent to Interstate Pipeline ROW (miles)	0.0	0.0	0.0
Length adjacent to Midstream Pipeline ROW (miles)	0.0	0.0	0.0
Length adjacent to electric transmission line ROW (miles)	0.0	0.0	0.0
Length adjacent to roadway (miles)	0.0	0.0	0.0
Total length co-located (miles)	0.0	0.0	0.0
ROW Requirements			
Pipeline construction requirements (acres) ^a	43.6	33.9	+9.7
Pipeline operation requirements (acres) ^b	21.8	17.0	+4.8
Federal and State Land			

Table P-8
CPL North Alternative 9
Minor Route Alternatives Comparison

Factor	CPL South Alternative 9 (proposed route)	Corresponding Section of October 2014 Route	Difference from October 2014 Route
Federal lands crossed (number / miles)	0 / 0.0	0 / 0.0	0 / 0.0
State lands crossed (number / miles)	0 / 0.0	0 / 0.0	0 / 0.0
Land Use			
Forested land crossed (miles) ^c	2.0	1.6	+0.4
Forested land impacts (construction / operation) (acres) ^d	24.7 / 12.3	19.6 / 9.8	+5.1 / +2.5
Forest interior crossed (miles) ^{c,e}	1.2	0.7	+0.5
Forest interior impacts (construction / operation) (acres) ^{d,e}	13.9 / 7.0	8.1 / 4.0	+5.8 / +3.0
Agricultural land crossed (miles) ^c	1.4	0.9	+0.5
Agricultural land impacted (construction / operation) (acres) ^d	16.5 / 8.3	11.6 / 5.8	+4.9 / +2.5
Other Land Crossed (miles) ^{c,f}	0.2	0.3	-0.1
Other Land Impacted (construction/operation) (acres) ^{d,f}	2.4 / 1.2	2.7 / 1.4	-0.3 / -0.2
Residences within 50 feet of the construction workspace (number) ^g	0	0	0
Landfills, quarries, and other mining operations within 0.25 mile (number)	0	0	0
Waterbodies			
Waterbodies crossed (number) ^h	3	3	0
Major waterbody crossings (number >100 feet) ⁱ	0	0	0
Wetlands			
Total wetland complexes crossed (number) ^j	0	0	0
Total wetland crossed (miles) ^j	0.0	0.0	0.0
Palustrine forested wetland complex impacts (construction / operation) (acres) ^j	0.0 / 0.0	0.0 / 0.0	0.0 / 0.0
Cultural Resources			
Sites crossed that are eligible or potentially eligible for listing on the National Register of Historic Places	0	0	0
Other Physical Features			

Table P-8
CPL North Alternative 9
Minor Route Alternatives Comparison

Factor	CPL South Alternative 9 (proposed route)	Corresponding Section of October 2014 Route	Difference from October 2014 Route
Road crossings (number)	7	7	0
Railroad crossings (number)	0	0	0
Other Environmental Features			
Steep slopes crossed (30 degrees or greater) (miles) ^l	< 0.1	< 0.1	0.0
Side slope construction (miles) ^m	< 0.1	< 0.1	0.0
<p>a Pipeline construction requirements based on a 100-foot-wide construction corridor and includes a 100-foot long buffer at begin and end points.</p> <p>b Pipeline operation requirements based on a 50-foot-wide corridor in greenfield segments, and a 25-foot-wide corridor for segments co-located with Transco pipelines. Calculation includes a 50-foot long buffer at begin and end points.</p> <p>c Forested land, forest interior, agricultural land and other land crossed are based on geographic information system (GIS) centerline analysis using United States Geological Survey (USGS) National Land Cover Dataset (NLCD).</p> <p>d Forest land, forest interior, agricultural land, and other land impacted are based on GIS corridor analysis using USGS NLCD. Since multiple land use types may be present within the corridor, impact acreage for individual land uses will not be representative of distance crossed, which is based on centerline analysis.</p> <p>e Forest interior determined by assessment of forest cover from USGS NLCD, where forest interior was considered 300 feet from forest breaks and outer forest edge. Interior forest is a sub-type of Forested Land.</p> <p>f Other land based on USGS NLCD and includes land cover types: Barren Land, Developed High Intensity, Developed Low Intensity, Developed Medium Intensity, Developed Open Space, Emergent Herbaceous Wetlands, Herbaceous, Open Water, Shrub Scrub, Woody Wetlands.</p> <p>g Residences identified based on review of aerial photography; in cases where it was not clear whether a structure was a residence or other built feature (e.g., barn, storage facility), the structure was assumed to be a residence.</p> <p>h Waterbodies identified based on National Hydrography Dataset.</p> <p>i Major waterbodies identified based on review of aerial photography.</p> <p>j Wetlands identified using the National Wetland Inventory.</p> <p>k National Register of Historic Places sites were identified using desktop data.</p> <p>l Length determined perpendicular to slope contour.</p> <p>m Length determined parallel with slope contour. Developed using USGS 10-foot contours.</p> <p>Key: CPL = Central Penn Line ROW = right-of-way</p>			

FIGURE 6

NORTHUMBERLAND & COLUMBIA COUNTIES

PROPOSED 42" CENTRAL PENN LINE SOUTH

ALTERNATIVE 9
M.P. 89.2 TO M.P. 92.7

OCTOBER 2014 PROPOSED ROUTE

COLUMBIA COUNTY
NORTHUMBERLAND COUNTY

M.P. 92.5
M.P. 92.0
M.P. 91.5
M.P. 91.0
M.P. 90.5
M.P. 90.0
M.P. 89.5
M.P. 89.0

SR 54



LEGEND

- PROPOSED 42" CENTRAL PENN LINE SOUTH
- CPL SOUTH ALTERNATIVE 9
- OCTOBER 2014 PROPOSED ROUTE
- - - COUNTY BOUNDARY



DRAWING NO.		REFERENCE TITLE	
		FIGURE 10D-13	

TRANSCONTINENTAL GAS PIPE LINE COMPANY LLC
CPL SOUTH ALTERNATIVE 9
ATLANTIC SUNRISE PROJECT
PROPOSED 42" CENTRAL PENN LINE SOUTH
M.P. 89.17 TO M.P. 92.70
NORTHUMBERLAND & COLUMBIA COUNTIES, PENNSYLVANIA

NO.	DATE	BY	REVISION DESCRIPTION	W.O. NO.	CHK.	APP.	DRAWN BY:	DATE:	ISSUE FOR BID:	SCALE:
0	3/31/15	JTN	ISSUED FOR FERC FILING	1161503	DP	MJH	JTN	3/10/15	ISSUE FOR CONSTRUCTION:	1" = 3000'
							MJH	3/10/15	DRAWING NUMBER:	REVISION: 0
							WO: 1161503	3:22 PM 3/23/2015	F-AP-CPLS-A-68	

7.5 CPL South Alternative 24D

CPL South Alternative 24D was developed to avoid impacts to equine facilities in Columbia County, and in response to FERC’s recommendation in the DEIS. Table P-9 provides a comparison of CPL South Alternative 24D to the corresponding section of the June 2015 route. A combination of field and remote-sensed data was used to compare potential impacts to waterbodies and wetlands from both routes. Alternative 24D is approximately 0.4-mile longer than the June 2015 proposed route, but increases co-location by 1.1 miles. Due to its greater distance, the alternative route would impact an additional 29.1 acres of land during construction, including an additional 19.3 acres of forestland. The alternative route would also require an additional seven road crossings. However, the June 2015 proposed route would cross more waterbodies (eight additional crossings) and wetlands (3 additional crossings) than Alternative 24D. Transco incorporated this alternative into the proposed route to be responsive to FERC’s recommendation in the DEIS.

**Table P-9
 CPL South Alternative 24D
 Minor Route Alternative Comparison**

Factor	CPL South Alternative 24D	Corresponding Section of June 2015 Proposed Route	Difference from Proposed Route
Length of corresponding segment (miles)	4.9	4.5	+0.4
Co-location			
Length adjacent to Interstate Pipeline ROW (miles)	0.0	0.0	0.0
Length adjacent to Midstream Pipeline ROW (miles)	0.0	0.0	0.0
Length adjacent to electric transmission line ROW (miles)	2.0	0.9	+1.1
Length adjacent to roadway (miles)	0.0	0.0	0.0
Total length co-located (miles)	2.0	0.9	+1.1
ROW Requirements			
Pipeline construction requirements (acres)^a	96.0	66.9	+29.1
Pipeline operation requirements (acres)^b	29.6	27.2	+2.4
Federal and State Land			
Federal lands crossed (number / miles)	0/0.0	0/0.0	0/0.0
State lands crossed (number / miles)	0/0.0	0/0.0	0/0.0
Land Use			
Forested land crossed (miles)^c	1.9	1.3	+0.6

Table P-9
CPL South Alternative 24D
Minor Route Alternative Comparison

Factor	CPL South Alternative 24D	Corresponding Section of June 2015 Proposed Route	Difference from Proposed Route
Forested land impacts (construction / operation) (acres)^d	36.1/11.4	16.8/7.8	+19.3/+3.6
Forest interior crossed (miles)^{c,e}	0.1	0.1	0.0
Forest interior impacts (construction / operation) (acres)^{d,e}	2.3/0.7	2.6/0.6	-0.3/+0.1
Agricultural land crossed (miles)^c	2.5	2.8	-0.3
Agricultural land impacted (construction / operation) (acres)^d	52.9/15.5	44.0/17.2	+8.9/-1.7
Other Land Crossed (miles)^{c,f}	0.4	0.4	0.0
Other Land Impacted (construction/operation) (acres)^{d,f}	7.0/2.7	6.1/2.2	+0.9/+0.5
Residences within 50 feet of the construction workspace (number)^g	3	3	0
Landfills, quarries, and other mining operations within 0.25 mile (number)	2	0	+2
Waterbodies			
Waterbodies crossed (number)^h	2	10	-8
Major waterbody crossings (number >100 feet)ⁱ	1	2	-1
Wetlands			
Total wetland complexes crossed (number)^j	3	6	-3
Total wetland crossed (miles)^j	<0.1	0.2	-0.2
Palustrine forested wetland complex impacts (construction / operation) (acres)^j	0.0	0.0	0.0
Cultural Resources			
Sites crossed that are eligible or potentially eligible for listing on the National Register of Historic Places (number)^k	0	0	0
Other Physical Features			
Road crossings (number)	18	11	+7
Railroad crossings (number)	0	0	0
Other Environmental Features			
Steep slopes crossed (30 degrees or greater) (miles)^l	<0.1	0	+<0.1
Side slope construction (miles)^m	0.1	0	+0.1

Table P-9
CPL South Alternative 24D
Minor Route Alternative Comparison

Factor	CPL South Alternative 24D	Corresponding Section of June 2015 Proposed Route	Difference from Proposed Route
a	Pipeline construction requirements based on a preliminary workspace design. This workspace may be modified if an alternative is incorporated into the proposed route.		
b	Pipeline operation requirements based on a 50-foot-wide corridor in greenfield segments, and a 25-foot-wide corridor for segments co-located with Transco pipelines. Calculation includes a 50-foot-long buffer at begin and end points.		
c	Forested land, forest interior, agricultural land, and other land crossed are based on geographic information system (GIS) centerline analysis using United States Geological Survey (USGS) National Land Cover Dataset (NLCD).		
d	Forest land, forest interior, agricultural land, and other land impacted are based on GIS corridor analysis using USGS NLCD. Since multiple land use types may be present within the corridor, impact acreage for individual land uses will not be representative of distance crossed, which is based on centerline analysis.		
e	Forest interior determined by assessment of forest cover from USGS NLCD, where forest interior was considered 300 feet from forest breaks and outer forest edge. Interior forest is a sub-type of Forested Land.		
f	Other land based on USGS NLCD and includes land cover types: Barren Land, Developed High Intensity, Developed Low Intensity, Developed Medium Intensity, Developed Open Space, Emergent Herbaceous Wetlands, Herbaceous, Open Water, Shrub Scrub, Woody Wetlands.		
g	Residences identified based on review of aerial photography; in cases where it was not clear whether a structure was a residence or other built feature (e.g., barn, storage facility), the structure was assumed to be a residence.		
h	Waterbodies identified based on field surveys and remote sensing analysis.		
i	Major waterbodies identified based on field surveys and remote sensing analysis.		
j	Wetlands identified using the field surveys and remote sensing analysis.		
k	National Register of Historic Places sites were identified using desktop data.		
l	Length determined perpendicular to slope contour.		
m	Length determined parallel with slope contour. Developed using USGS 10-foot contours.		
Key:	CPL = Central Penn Line		
	ROW = right-of-way		

8.0 ROUTE DEVIATIONS CONSIDERED

A route deviation is a minor adjustment to the proposed route, typically to avoid a specific feature (e.g., topography, sensitive habitat, structures, areas with potential constructability issues, etc.) and/or to accommodate requests by affected landowners or jurisdictional agencies. A route deviation differs from a minor route alternative in that a route deviation diverges from the proposed alignment for a short distance in the same general area as the proposed route. Transco developed route deviations in response to landowner and other stakeholder comments and site-specific conditions identified during field surveys and desktop analyses.

Table P-9 summarizes the route deviations considered within Columbia County and the reason for the deviation.

Table P-9
Summary of Route Deviations Accepted into the Proposed Routes for the Atlantic Sunrise Project In Columbia County

Reference ID	County	Milepost	Length (miles)	Distance from Proposed Centerline (feet)	Reason for Deviation
#M-0066	Columbia	93.4 -94.4	1.0	966	Landowner request from five landowners
#M-0080	Columbia	95.0 -96.8	1.8	1,221	Landowner request
#M-0137	Columbia	97.9 - 100.1	2.2	192	Realignment of Susquehanna HDD crossing
#M-0067	Columbia	102.2 - 104.4	2.2	2,504	Landowner request
#M-0068	Columbia	105.1 - 106.7	1.6	2,323	Landowner request
#M-0156	Columbia	105.1 - 105.3	0.2	67	Avoids spring
#M-0159	Columbia	119.4 - 119.7	0.3	265	Landowner request to avoid tree clearing
#M-0171	Columbia	106.0 - 106.8	0.8	697	Landowner request to parallel field road
#M-0174	Columbia	98.1 - 98.7	0.6	815	Landowner request to avoid tree clearing
#M-0179	Columbia	100.9 - 101.4	0.5	444	Co-locate with power line and avoid steep slope
#M-0086	Columbia	2.1 – 2.3	0.24	275	Avoid federally listed T&E plant species population
#M-0285	Columbia	95.6 – 96.1	0.20	43	Adjust centerline to increase distance from residence
#M-0241	Columbia	103.4 – 103.7	0.35	300	Adjust centerline to accommodate future transmission line projects
#M-0315	Columbia	104.8 – 105.0	0.28	182	Adjust centerline to follow fence line
#M-0220	Columbia	105.5 – 106.0	0.51	92	Landowner request to parallel edge of field

Table P-9
Summary of Route Deviations Accepted into the Proposed Routes for the Atlantic Sunrise Project In Columbia County

Reference ID	County	Milepost	Length (miles)	Distance from Proposed Centerline (feet)	Reason for Deviation
#M-0236	Columbia	M-0171 0.2 – M-0171 0.7	0.49	103	Landowner request to accommodate potential future subdivision
#M-0214	Columbia	107.3 – M-0195 0.2	0.43	1089	Landowner request to move pipeline away from residence
#M-0271	Columbia/ Northumberland	92.2 – 92.4	0.26	415	Adjust centerline at Happy Valley Road
#M-0207	Columbia	112.4 – 112.6	0.21	77	Align centerline and CS-MLV-12 with Compressor Station 610 design
#M-0115	Columbia	0.0 – 0.0	0.0	17	Aligns CPL North with West Diamond Regulator Station demarcation point
#M-0353	Columbia	125.1 – 125.2	0.11	5	Aligns CPL South with West Diamond Regulator Station demarcation point
#M-0360	Columbia	112.3 – M-0207 0.2	0.27	91	Aligns CPL South with Compressor Station 610 facility design
#M-0390	Columbia	M-0179 0.1 – 101.4	0.17	60	Landowner request to modify workspace
CPL South Alternative 24D / #M-0423	Columbia	102.1 – M-0236 0.2	4.81	8000	Minor alternative requested by FERC in the draft EIS
#M-0155	Columbia	0.8 – 1.0	0.16	60	Cross stream perpendicularly based on comments received from PADEP
#M-0456	Columbia	M-0423 2.8 – M-0423 3.0	0.19	130	FERC recommended reroute in the FEIS to address landowner concerns, and minimize impacts to home under construction.
#M-0494	Columbia	M-0174 0.7 – 98.7	0.33	83	Adjust centerline to move closer to existing PPL structures
#M-0495	Columbia	100.1 – M-0179 0.1	1.15	92	Adjust centerline to move closer to existing PPL structures
#M-0496	Columbia	101.8 - 101.9	0.02	16	Adjust centerline to move closer to existing PPL structures
#M-0497	Columbia	102.1 – M-0423 0.0	0.01	53	Adjust centerline to move closer to existing PPL structures
#M-0521	Columbia	M-0390 0.1 – 101.6	0.11	10	Adjust centerline to move closer to existing PPL structures

Table P-9
Summary of Route Deviations Accepted into the Proposed Routes for the Atlantic Sunrise Project In Columbia County

Reference ID	County	Milepost	Length (miles)	Distance from Proposed Centerline (feet)	Reason for Deviation
#M-0522	Columbia	M-0494 0.3 – 99.2	0.17	73	Adjust centerline to move closer to existing PPL structures

9.0 WETLAND AND WATERBODY CONSTRUCTION ALTERNATIVES

During design of the Project, Transco attempted to avoid and minimize wetland and waterbody impacts that would result from construction and installation of the Project by reducing the construction right-of-way to 75 feet in most wetlands and by proposing to maintain the right-of-way in accordance with the FERC Wetland and Waterbody Construction and Mitigation Procedures. Transco is also addressing feasibility of trenchless installation measures at major waterbody crossings and in locations where wetlands or waterbodies are located in close proximity to a road crossing. Some of the critical factors taken into consideration to determine if trenchless construction methods would be successful include surface conditions, workspace requirements, subsurface conditions, ground surface elevation, water allocations, inadvertent returns, drilling fluid disposal, risks, constructability, schedule and post-construction accessibility. The following details generally discusses the factors considered when determining the crossing method for certain resources.

Horizontal Directional Drill

The Horizontal Directional Drill (HDD) method allows for trenchless construction across an area by drilling a hole below the conventional pipeline depth and pulling the pipeline through a pre-drilled hole. A number of factors need to be evaluated when considering use of the HDD method including: minimum drill length, typical area of disturbance for set-up of an HDD, and feasibility/risk factors.

Minimum Drill Length

The pipeline radius of curvature for the drill path is proportional to the diameter of the pipeline, which affects how tight the bend in the drill hole can be and, thus, the minimum length of the crossing. The exit and entry angles are relatively flat (8 to 12 degrees from horizontal) to avoid

excessive lifting heights to install the pipe and to avoid buckling the pipe at the inflection point in the entry hole. A number of factors determine the minimum drill hole length, with the key factors being:

- Required clearance depth below the obstacle(s) to be crossed;
- Pipeline radius of curvature;
- Adjacent terrain and/or topography;
- Desired entry/exit angles; and
- Required layout for the drilling equipment and pullback string.

Deeper drill holes require longer drill hole lengths to achieve minimum necessary clearance. Similarly, the minimum drill hole length is longer for larger pipe, which has a greater radius of curvature. The depths can also be dictated by the site geology. Transco typically designs the radius of curvature to be 1,200 times the pipe diameter (i.e., a 42-inch-diameter pipeline will have a design radius of curvature of 4,200 feet). The exit and entry points are chosen to be installed in a relatively flat, open area at similar elevations. The HDD will produce a minimum drill hole length of approximately 1,600 feet and profile depth of 75 feet below the entry point (at entry angle of 10 degrees). At entry angles greater than 10 degrees, the minimum depth from the entry point increases, (i.e., 92 feet for a 12 degree entry angle), and hence increases the minimum length (i.e., 1,800 feet for a 12 degree entry angle). The drill hole lengths can vary due to actual site conditions, such as subsurface conditions and topography. The topography of the Project area requires a minimum drill hole length of 1,900 to 2,300 feet. The duration of drilling and construction will vary due to subsurface geologic and hydrologic conditions, layout, and drill hole length. For example, the rate of penetration of the drill bit through hard rock such as granite will be slower than through a softer material such as shale.

Typical HDD Disturbance Areas

HDDs may still require portions of the ROW to be cleared to allow the pipeline pullback section to be assembled (strung) and pulled through the drill hole. Similarly, clearing vegetation may be necessary to provide a line-of-sight to the pipeline ROW for both construction and long-term operation. For example, a 2,100-foot-long drill hole would require a minimum of approximately 5 acres to be cleared and graded to provide adequate and safe workspace at the entry and exit points to accommodate the HDD equipment, drilling mud pits, ancillary support equipment, and

a 2,200-foot by 40- or 60-foot work strip for pipe stringing/pullback operations. Temporary workspace areas at the entry and exit workspaces typically measure 200 feet by 250 feet for pipelines with a 24-inch diameter or greater. The pipe stringing workspace must be aligned with the drill hole so that lateral forces are minimized during the pipeline pullback. If a pipeline ROW curves on the approach to an HDD crossing, the pullback section will have an additional impact on areas outside of the ROW where the pullback workspace deviates at an angle to the construction ROW. Additional heavy equipment would be required to handle the pipe around any curves. There would also be an added risk of damaging the pipe coating if the pipe were to slide off the roller assemblies.

HDD Feasibility & Risk Factors

Site-specific geotechnical factors have a substantial effect on HDD feasibility. Subsurface characteristics must be fully evaluated with on-site borings and sample testing to determine whether the HDD would be deemed technically infeasible. Furthermore, geotechnical factors, including but not limited to rock hardness, rock quality, and borehole stability, have a substantial effect on the duration of construction for an HDD.

HDD risks increase as pipe diameter increases. The risks increase disproportionately for larger diameter pipelines, such as the 42-inch-diameter pipeline proposed for portions of the Project. Drill hole failure (collapse of the drill hole) during pipeline pullback operations is one of the greatest risks to the successful completion of an HDD. A drill hole failure can cause an accidental release of drilling mud. The loss of tooling downhole also poses a substantial risk of failure for large-diameter HDD installations. The risk of lost tooling downhole increases disproportionately with increased hole diameter because of the higher rotary torque required to ream a larger-diameter hole. HDDs are often used to avoid direct impacts on a sensitive environmental resource, such as a wetland, waterbody, or special status species habitat. If the impact of a release is greater than the risk of an open-cut crossing, and the risk of release cannot be reduced to an appropriate level, then an open-cut crossing may be preferable to an HDD crossing.

Methods to reduce HDD failure risks include the following:

- Ensuring that the geologic formation through which the drill is planned is stable and suitable for HDD. For example, a formation containing flowing sand or cobbles and

boulders will often result in a borehole collapse or a stuck pipe, and thus is unsuitable for drilling.

- Minimizing the number of pipeline strings required to be welded during the pullback process (where the pipeline is pulled back through the drilled borehole). A single-string pullback is preferred for HDDs because it avoids the need to stop the pullback activity in order to weld up two or more separate pipe strings. A single string pullback allows for a continuous force to be applied to the pipe during the pullback, and reduces the risk of the pipeline becoming stuck in the borehole (due to the potential for a localized collapse of the borehole around the pipeline).
- Designing the entry and exit point at or near the same elevation. When a significant elevation difference exists between the entry and exit points, a portion of the drilled hole will not be filled with drilling fluid. In rock formations, the risk of drill tool failure increases because the tools may not be adequately cooled and lubricated through the dry section of the hole despite drilling fluid being pumped during operations. In soil formations, the risk of hole collapse is highly elevated, which may lead to ground surface settlement along the HDD alignment, damage to structures, drilling fluid release, or a stuck pipe during pullback operations.

If the HDD is unsuccessful, Transco will implement its HDD Contingency Plan for the Susquehanna River and Little Fishing Creek, which is included in Attachment 3 of the Transco ECP (Attachment M). County-Specific Impact Mapping (Attachment H-3) is included for the contingency crossing methods in the case of an unsuccessful HDD. These drawings include E&S BMPs that are specific to the contingency crossing method, which are also included within the E&S Plans within Attachment M. Additionally, the Chapter 105 Impact Table (Attachment E-2) included temporary watercourse, wetland, and floodplain impacts that would be associated with the use of the contingency crossing methods, which will allow for the implementation of the contingency crossing methods without requiring the processing of major permit amendments prior to the initiation of the crossing method.

Other Construction Limitations

HDDs for large-diameter pipelines (e.g., 30- to 42-inch) typically require 20,000 to 30,000 gallons of water per day for use in the creation of drilling mud. If surface water is not available at

the site, it must be identified and trucked in daily from a municipal water source. Duration from site preparation to pipe tie-in following the HDD can be at least 6 months. Furthermore, the number of HDDs on a project can be limited due to the number of available drilling rigs in the United States. For these and other reasons, Transco limits its use of HDDs to crossings of highly sensitive resources.

Operations Implications

Due to the radius of curvature required to install a large diameter pipeline using the HDD technique, the pipe is usually installed at depths greater than 70 feet below the ground surface, which poses substantial operational implications. If in-line inspection activities indicate that maintenance or repairs are needed for a section of pipe that has been installed using the HDD technique, the pipeline's installation depth would render it inaccessible for repairs. In these cases, the section of pipe would have to be replaced. Replacement would result in additional environmental impacts, usually from having to install a second HDD parallel and adjacent to the original HDD section, assuming adequate clearance (space) is available for a replacement HDD section to be installed. As an industry practice, for long-term operations and maintenance purposes, an HDD is only utilized where no other construction method is deemed feasible and where adequate space exists for a replacement pipeline in the event the HDD section must be replaced (e.g., at very large river crossings).

Conventional Bore

The conventional bore method for cased or uncased pipeline crossings is typically employed under roads or railroad crossings, but may also be employed at shallow wetland or waterbody crossings. Soil conditions, the length of the flight auger string, and equipment torque generally limit this method to a maximum length of approximately 400 feet. This installation method involves digging a bore pit on each side of the feature to be crossed and typically requires a minimum setback from the feature for worker safety and slope stability purposes. The bore pit and receiving pit vary in size but are usually about 20 feet wide by 60 feet long. This provides the necessary space for the boring machine to insert a pipe joint or pipe string (two or more joints welded together) into the borehole. The bore pit depth generally ranges from 10 to 12 feet but may be greater, depending on topography, to accommodate the minimum of 5 feet of cover over the bored pipeline segment. The depth would be greater for wetlands or waterbodies with an adjacent slope.

Auger boring equipment is usually track-mounted. The track is set to the required line and grade for the proposed bore path and requires a stable bore pit bottom. The bore pit bottom is often stabilized with crushed stone or other material. Minor adjustments can be made by setting the track and keeping it stable, which is critical for a successful bore. As such, keeping groundwater out of the bore pit is important. Once the bore pit is excavated, the boring machine is placed in the bore pit and conventional horizontal auger drilling commences to ream the borehole before the pipe can be installed. The boring machine rides along the track as the bore pipe is advanced (or pushed) into the borehole. The boring machine generates thrust by pushing from either the back wall of the bore pit lined with sheet piles or piles driven behind the track.

A rotating auger cutting bit attached to the lead bore pipe section cuts the soil ahead of the bore pipe as it advances. The rotating auger inside the bore pipe discharges the soil out the rear of the pipe. After the lead bore pipe section has reached its maximum distance, a second auger section is coupled (or pinned) to the first auger section. The second bore pipe section is then placed over the second auger section and welded to the first bore pipe section. The bore pipe is then advanced again by applying thrust and simultaneously rotating the auger bit inside the bore pipe. This process is repeated until the desired bore length is achieved and the bore pipe extends into the receiving pit. The auger cutting head is then removed, and the remaining soil is removed from within the bore pipe section.

A conventional bore method may be “dry” (no water or drilling fluid used) or “wet” (requiring the use of water or a bentonite-based drilling fluid), depending on soil conditions. No wet conventional bores are proposed for the Project. After the bored pipeline section is installed, additional excavation is necessary to tie the bored pipeline section to the pipeline section conventionally installed by open trench.

While the pipeline industry considers this a dependable method for crossing under elevated road beds, highways, and railroad beds, it is not generally preferred for use in areas with shallow or near-surface groundwater. These crossings require large bore pits adjacent to saturated areas with potentially low soil shear strength, particularly near wetlands. Large bore pits in these areas would require shoring of pit walls and implementation of significant dewatering measures. Crossings of these features also would result in an increased risk of the

bore-pit walls slumping and/or borehole misalignment due to track settlement. The duration of construction for bored crossings of wetlands and waterbodies typically ranges from 3 to more than 4 weeks, depending on the crossing length, topography, soil conditions, and the need for blasting in areas of shallow bedrock. A conventional open-cut crossing of wetlands and waterbodies is generally much quicker, taking days rather than weeks, which minimizes the duration of disturbance of the feature. For these reasons, Transco rejected the conventional auger bore method as a preferred construction method for crossing wetlands, forested areas, and waterbodies where conventional trenching construction is feasible.

Summary of Trenchless Installation Methods

As described in **Appendix P-2**, a successful HDD or bore may have certain environmental benefits, but the overall environmental impact can be greater, particularly if the stream is small and can be crossed using dry crossing methods in a short period of time (i.e., 24 to 48 hours). Also, trenchless crossings may not be feasible at all locations because of suboptimal substrate or geologic conditions. For these reasons, Transco plans to use conventional construction methods to cross the majority of waterbodies along the Atlantic Sunrise Project.

In the absence of environmental or construction concerns requiring the use of other crossing methods, conventional open cut methods are the most efficient construction method for crossing wetlands and waterbodies. Dry-crossing construction techniques will be implemented on the majority of streams crossed by the Project. Dry-crossing techniques minimize impacts to fisheries by reducing the potential for sediment to mix with the existing flow of stream water and by allowing unobstructed stream flow during construction.

Open-Cut

In the absence of environmental or construction concerns requiring the use of other crossing methods, conventional open cut methods are the most efficient construction method for crossing waterbodies. Dry-crossing construction techniques will be implemented on the majority of waterbodies crossed by the Project. Dry-crossing techniques minimize impacts to fisheries by reducing the potential for increases in turbidity and by allowing unobstructed stream flow during construction.

The dry open-cut crossing method is an approved installation method in the DEP Erosion and Sediment Control Best Management Practice (BMP) Manual and has been proposed at locations where engineering has determined the method is appropriate, feasible and safe to construct. However, a dry crossing method is not viable for number of stream crossings due to technical restrictions, site-specific environmental factors, or safety concerns.

These installations would be scheduled around storm events, since the construction duration is limited and can be completed where water flows and depths are slightly greater, where other conventional methods may not be feasible. In addition, ROW impacts are reduced since there is less need for additional temporary workspace.

The Open-Cut installation method provides for the optimal pipeline configuration with respect to operation and maintenance. The proposed pipe would be installed a minimum of five feet below the streambed and is therefore easily accessible for routine maintenance or emergency access during operation. Trenchless methods, such as HDD and conventional bore installations, do not offer this operational benefit due to the installation depth and would require replacement of the entire pipe segment should an integrity issue arise during operation.

In some specific cases the Open-Cut installation is the most practical and environmentally preferable option. Transco carefully evaluated all of the streams crossed by the Project; the open-cut installation method is only proposed for crossings where it represents the safest, most reliable and environmentally-sound method for pipeline installation. Each crossing will be completed in accordance with the ECP, including the installation of BMPs and immediate bank stabilization to reduce turbidity.