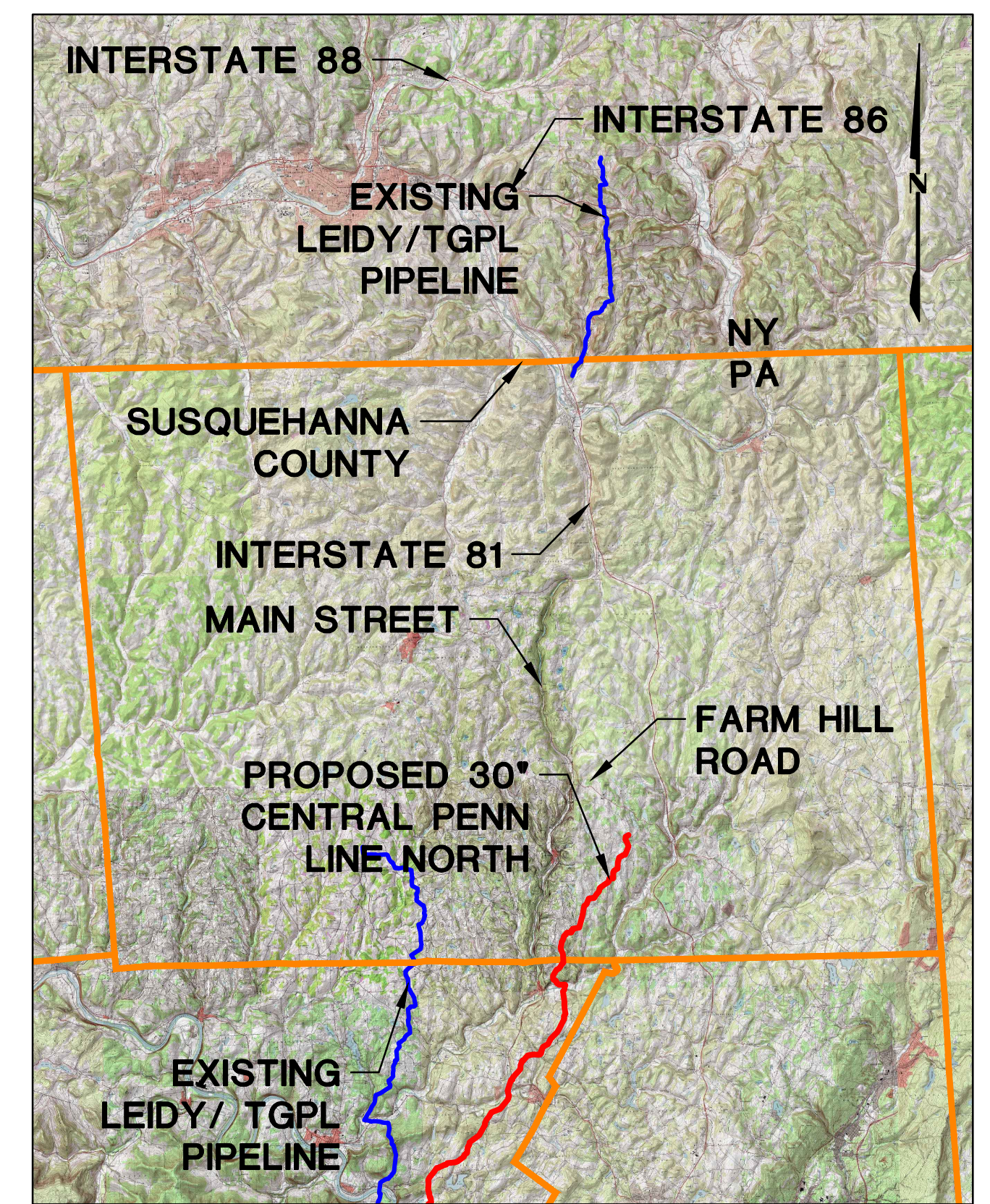
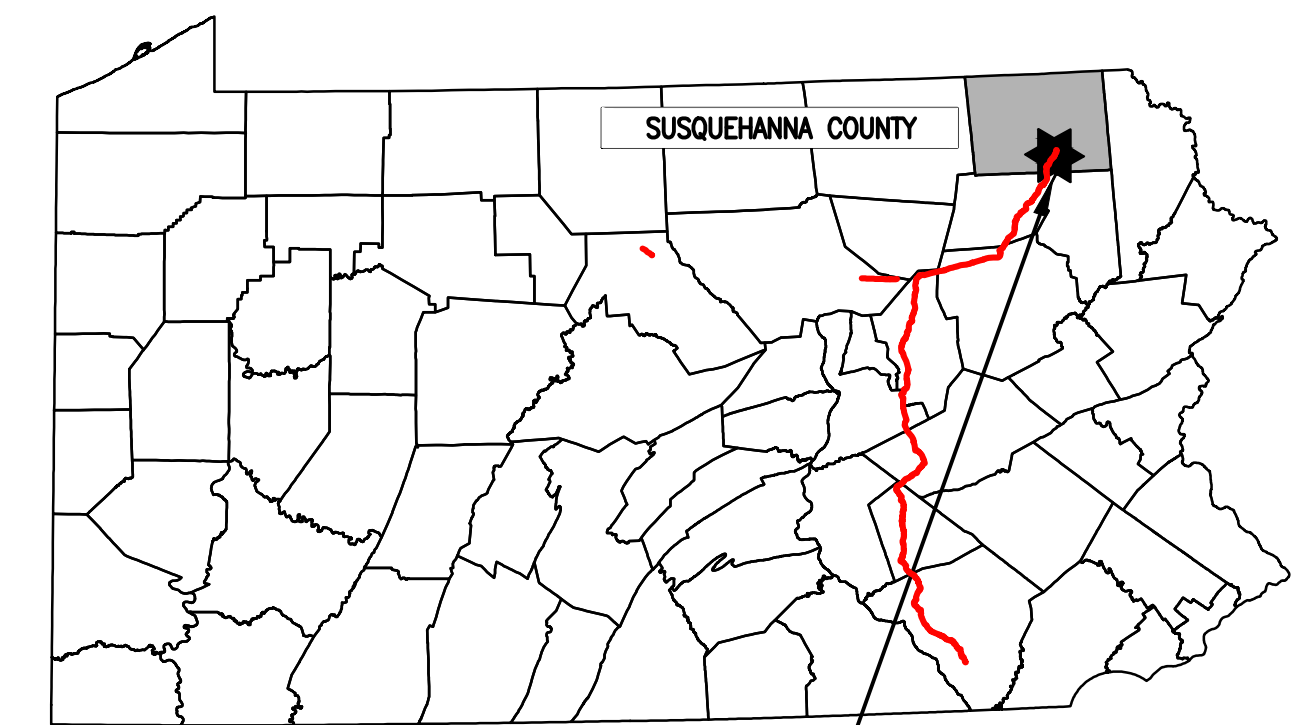


TRANSCONTINENTAL GAS PIPE LINE COMPANY, LLC SOIL EROSION & SEDIMENT CONTROL PLAN / SITE RESTORATION PLAN ATLANTIC SUNRISE PROJECT PROPOSED 30" CENTRAL PENN LINE NORTH

LENOX TOWNSHIP
SUSQUEHANNA COUNTY
PENNSYLVANIA



USGS YOUNG WOMAN'S CREEK AND LENOXVILLE QUADRANGLE
VICINITY MAP
SCALE: 1"=30,000'



PROJECT
LOCATION

FACILITY NAME &/OR TYPE	DRAWING NO.	PHASE	SHEET NO.	DRAWING NAME
GENERAL OVERALL	24-1601-70-28-A/1683_3 <i>REVISED</i>	N/A	1 of 2 <i>REVISED</i>	COVER SHEET
			2 of 2 <i>REVISED</i>	LOCATION MAP AND PLAN SHEET INDEX
ALIGNMENT SHEETS	24-1601-70-28-A/1683_3 <i>REVISED</i>	2	1 of 7 <i>REVISED</i>	SOIL EROSION AND SEDIMENT CONTROL PLAN / SITE RESTORATION PLAN
			2 of 7 <i>REVISED</i>	SOIL EROSION AND SEDIMENT CONTROL PLAN / SITE RESTORATION PLAN
			3 of 7 <i>REVISED</i>	SOIL EROSION AND SEDIMENT CONTROL PLAN / SITE RESTORATION PLAN
			4 of 7 <i>REVISED</i>	SOIL EROSION AND SEDIMENT CONTROL PLAN / SITE RESTORATION PLAN
			5 of 7 <i>REVISED</i>	SOIL EROSION AND SEDIMENT CONTROL PLAN / SITE RESTORATION PLAN
			6 of 7 <i>REVISED</i>	SOIL EROSION AND SEDIMENT CONTROL PLAN / SITE RESTORATION PLAN
			7 of 7 <i>REVISED</i>	SOIL EROSION AND SEDIMENT CONTROL PLAN / SITE RESTORATION PLAN
CN-CSA-SU-1-007	24-1601-70-28-A/1683_3- CSA-CN-CSA-SU-1-007 <i>REVISED</i>	2	1 of 2	SOIL EROSION & SEDIMENT CONTROL PLAN
			2 of 2	SITE RESTORATION PLAN
CN-CSA-SU-1-008	24-1601-70-28-A/1683_3- CSA-CN-CSA-SU-1-008 <i>REVISED</i>	2	1 of 2	SOIL EROSION & SEDIMENT CONTROL PLAN
			2 of 2	SITE RESTORATION PLAN

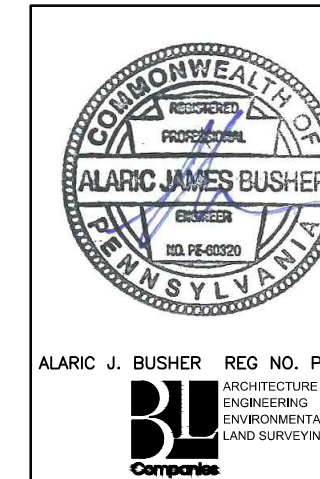
* REFER TO BEST MANAGEMENT PRACTICES AND QUANTITIES PLAN SET FOR NOTES AND DETAILS

SOIL INFORMATION	
MAP UNIT NAME	MAP UNIT DESIGNATION
Bc	BASHER SILT LOAM
BD2	BATH FLAGGY LOAM, 20 TO 30 PERCENT SLOPES, MODERATELY ERODED
BsD	BATH VERY STONY LOAM, 12 TO 30 PERCENT SLOPES
LkB2	LORDSTOWN AND OQUAGA CHANNERY SILT LOAMS, 3 TO 12 PERCENT SLOPES, MODERATELY ERODED
LkC2	LORDSTOWN AND OQUAGA CHANNERY SILT LOAMS, 12 TO 20 PERCENT SLOPES, MODERATELY ERODED
LoB	LORDSTOWN AND OQUAGA FLAGGY SILT LOAMS, 3 TO 12 PERCENT SLOPES
LoC2	LORDSTOWN AND OQUAGA FLAGGY SILT LOAMS, 12 TO 20 PERCENT SLOPES, MODERATELY ERODED
LsD	LORDSTOWN AND OQUAGA VERY STONY SILT LOAMS, 12 TO 30 PERCENT SLOPES
MGB2	MARDIN CHANNERY SILT LOAM, 3 TO 8 PERCENT SLOPES, MODERATELY ERODED
McC2	MARDIN CHANNERY SILT LOAM, 8 TO 15 PERCENT SLOPES, MODERATELY ERODED
MC2	MARDIN FLAGGY SILT LOAM, 8 TO 15 PERCENT SLOPES, MODERATELY ERODED
MgB	MARDIN VERY STONY SILT LOAM, 0 TO 8 PERCENT SLOPES
MgD	MARDIN VERY STONY SILT LOAM, 8 TO 25 PERCENT SLOPES
Mn	MIXED ALLUVIAL LAND
MoB2	MORRIS CHANNERY SILT LOAM, 3 TO 8 PERCENT SLOPES, MODERATELY ERODED
MoC2	MORRIS CHANNERY SILT LOAM, 8 TO 15 PERCENT SLOPES, MODERATELY ERODED
MbB2	MORRIS FLAGGY SILT LOAM, 3 TO 8 PERCENT SLOPES, MODERATELY ERODED
McC2	MORRIS FLAGGY SILT LOAM, 8 TO 15 PERCENT SLOPES, MODERATELY ERODED
VGB2	VOLUSIA CHANNERY SILT LOAM, 3 TO 8 PERCENT SLOPES, MODERATELY ERODED
VGC2	VOLUSIA CHANNERY SILT LOAM, 8 TO 15 PERCENT SLOPES, MODERATELY ERODED
VGD2	VOLUSIA CHANNERY SILT LOAM, 15 TO 25 PERCENT SLOPES, MODERATELY ERODED
VB	VOLUSIA FLAGGY SILT LOAM, 3 TO 8 PERCENT SLOPES
VC	VOLUSIA FLAGGY SILT LOAM, 8 TO 15 PERCENT SLOPES
VsB	VOLUSIA VERY STONY SILT LOAM, 0 TO 8 PERCENT SLOPES
WeB2	WELLSBORO CHANNERY SILT LOAM, 3 TO 8 PERCENT SLOPES, MODERATELY ERODED
WeC2	WELLSBORO CHANNERY SILT LOAM, 8 TO 15 PERCENT SLOPES, MODERATELY ERODED
WeD2	WELLSBORO CHANNERY SILT LOAM, 15 TO 25 PERCENT SLOPES, MODERATELY ERODED
WIB2	WELLSBORO FLAGGY SILT LOAM, 3 TO 8 PERCENT SLOPES, MODERATELY ERODED
WIC2	WELLSBORO FLAGGY SILT LOAM, 8 TO 15 PERCENT SLOPES, MODERATELY ERODED
WID2	WELLSBORO FLAGGY SILT LOAM, 15 TO 25 PERCENT SLOPES, MODERATELY ERODED
Wsb	WOOSTER AND CANFIELD VERY STONY LOAMS, 0 TO 12 PERCENT SLOPES
Wsd	WELLSBORO VERY STONY SILT LOAM, 8 TO 25 PERCENT SLOPES
Wy	WYALUSING SILT LOAM



PENNSYLVANIA ACT 287 (1974)
AS AMENDED BY PENNSYLVANIA
ACT 199 (2004) REQUIRES NO
LESS THAN THREE (3) WORKING
DAYS AND NO MORE THAN (10)
WORKING DAYS NOTICE TO
UTILITIES BEFORE YOU EXCAVATE,
DRILL, BLAST OR DEMOLISH.

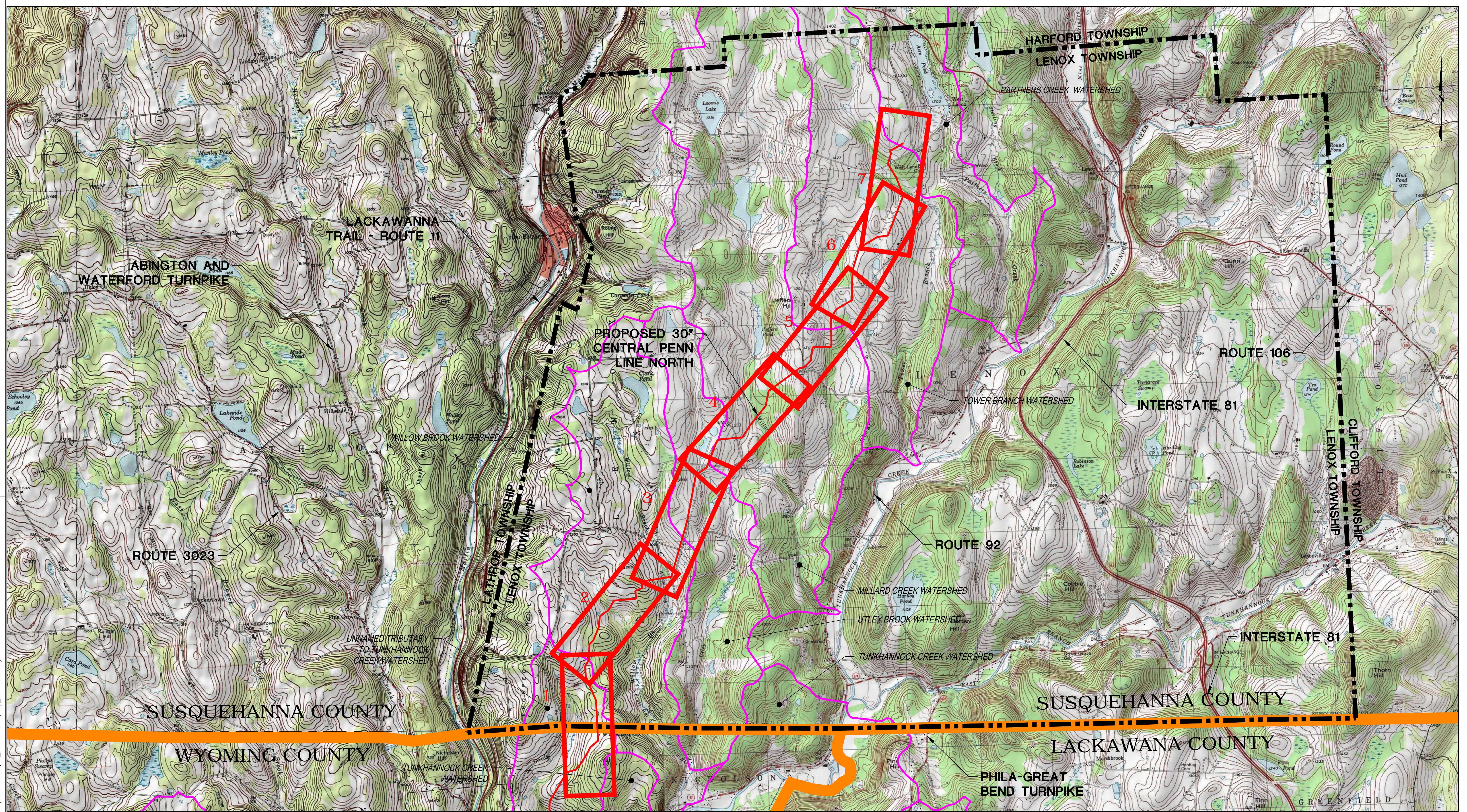
ENGINEER OF RECORD
BL COMPANIES
4242 CARLISLE PIKE, SUITE 260
CAMP HILL, PA 17011
P:717-651-9850
F:717-651-9858



REVISIONS					
NO.	DATE	BY	DESCRIPTION	W.D. NO.	CHK. APP.
0	08/26/2015	BL	ISSUED FOR PADEP SUBMITTAL	W01161481	DAK AJB
1	12/02/2015	BL	ISSUED FOR PADEP RESUBMITTAL	W01161481	DAK AJB
2	Oct. 2016	BL	PADEP TECHNICAL DEFICIENCY RESPONSE #1	W01161481	DAK AJB

TRANSCONTINENTAL GAS PIPE LINE COMPANY, LLC SOIL EROSION & SEDIMENT CONTROL PLAN / SITE RESTORATION PLAN ATLANTIC SUNRISE PROJECT PROPOSED 30" CENTRAL PENN LINE NORTH COVER SHEET SUSQUEHANNA COUNTY, PENNSYLVANIA						
DRAWN BY:	TLD	DATE:	11/2014	ISSUED FOR BID:	SCALE:	NONE
CHECKED BY:	JLK	DATE:	03/13/2015	ISSUED FOR CONSTRUCTION:	REVISION:	2
APPROVED BY:	AJB	DATE:	03/13/2015	DRAWING NUMBER:	24-1601-70-28-A/1683_3	SHEET 1 OF 2
W.D.:	W01161481					

Drawn By & Date/Time: csteewart Nov 11, 2016 - 2:12pm
 Drawing Location & Name: G:\JOBS\14\14C\14C4909\DWG\010-CPLN\PL_CV14C4909(10)_ES-SUS.dwg



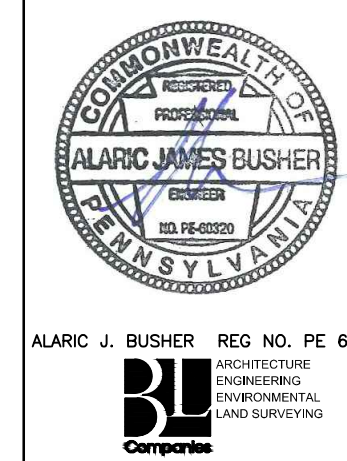
LEGEND

- SHEET INDEX TILE (# OF 7)
- WATERSHED BOUNDARY
- TOWNSHIP LINE
- COUNTY LINE
- PROPOSED 30" CENTRAL PENN LINE NORTH

811 Know what's below. Call before you dig.

PENNSYLVANIA ACT 287 (1974) AS AMENDED BY PENNSYLVANIA ACT 199 (2004) REQUIRES NO LESS THAN THREE (3) WORKING DAYS AND NO MORE THAN (10) WORKING DAYS NOTICE TO UTILITIES BEFORE YOU EXCAVATE, DRILL, BLAST OR DEMOLISH.

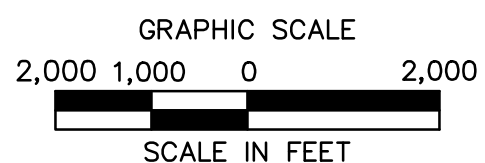
ENGINEER OF RECORD
 BL COMPANIES
 4242 CARLISLE PIKE, SUITE 260
 CAMP HILL, PA 17011
 P:717-651-9850
 F:717-651-9858



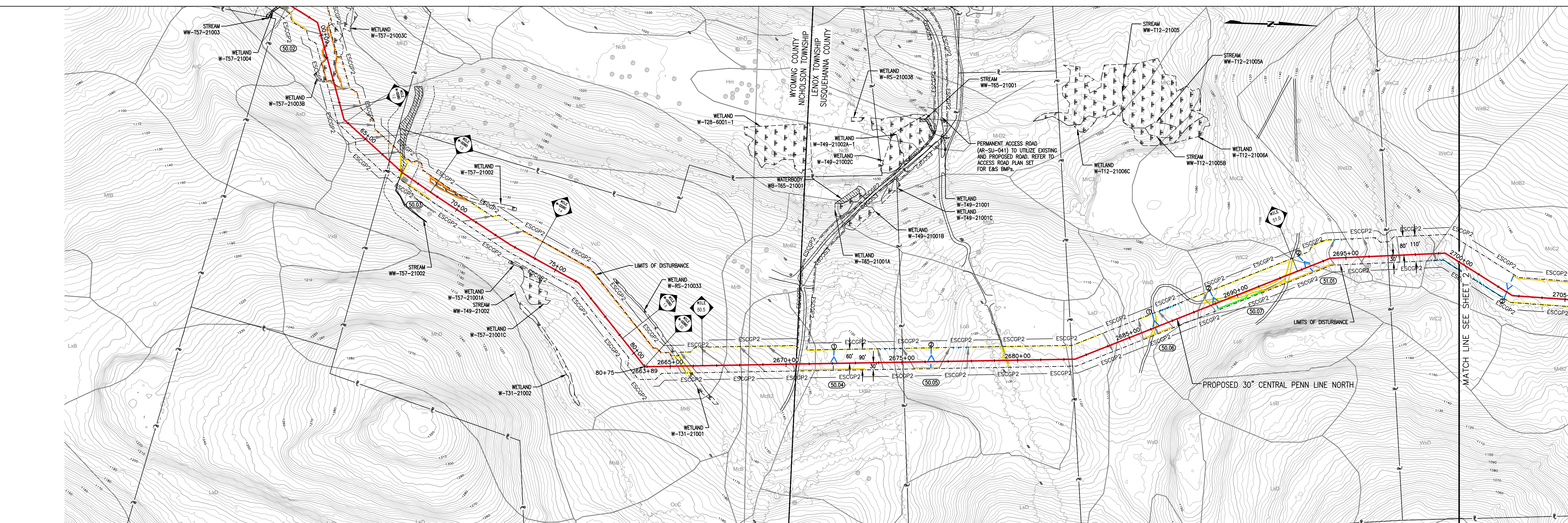
REVISIONS				W.O. NO.	CHK.	APP.
NO.	DATE	BY	DESCRIPTION			
0	08/26/2015	BL	ISSUED FOR PADEP SUBMITTAL	W01161481	DAK	AJB
1	12/02/2015	BL	ISSUED FOR PADEP RESUBMITTAL	W01161481	DAK	AJB
2	Oct. 2016	BL	PADEP TECHNICAL DEFICIENCY RESPONSE #1	W01161481	DAK	AJB

TRANSCONTINENTAL GAS PIPE LINE COMPANY, LLC
 SOIL EROSION & SEDIMENT CONTROL PLAN / SITE RESTORATION PLAN
 ATLANTIC SUNRISE PROJECT
 PROPOSED 30" CENTRAL PENN LINE NORTH
 LOCATION MAP AND PLAN INDEX SHEET
 SUSQUEHANNA COUNTY, PENNSYLVANIA

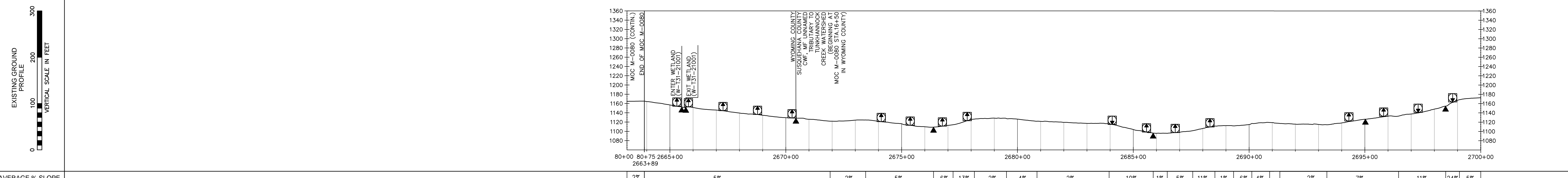
DRAWN BY: TLD DATE: 11/2014 ISSUED FOR BID: SCALE: 1" = 2,000'
 CHECKED BY: JJK DATE: 03/13/2015 ISSUED FOR CONSTRUCTION: REVISION: 2
 APPROVED BY: AJB DATE: 03/13/2015 DRAWING NUMBER: 24-1601-70-28-A/1683_3 SHEET 2 OF 2
 W.O. W01161481



NICHOLSON TOWNSHIP / LENOX TOWNSHIP



LAND USE		21	5	21	41	21	41	14	41	43	99	41	21	
SOIL TYPE		VcC	MrB	McB	McB2	Lx2	LoB		LsD	WsD	WIC2	MoC2	WeD2	MoC2
E & S DETAIL OR E & S DETAIL GROUP														



AVERAGE % SLOPE		2%	5%	2%	5%	6%	13%	2%	4%	2%	10%	1%	5%	11%	1%	6%	4%	2%	7%	11%	24%	5%
-----------------	--	----	----	----	----	----	-----	----	----	----	-----	----	----	-----	----	----	----	----	----	-----	-----	----

EROSION CONTROL LEGEND

WATERBAR SPACING	TRENCH PLUG SPACING	WATERBARS (SEE NOTE 4)
SLOPE (%) SPACING (FT)	SLOPE (%) SPACING (FT)	
<5 200	<5 1000	PERMANENT TRENCH PLUG
5-15 150	5-15 500	EXCAVATED DIVERSION SWALE
>15-25 100	>15-25 300	FILTER SOCK DIVERSION SWALE
25-30 100	25-30 200	TEMPORARY DIVERSION SWALE ID (100.4)
>30 50	35-100 100	12" SEDIMENT BARRIER
		18" SEDIMENT BARRIER
		24" SEDIMENT BARRIER
		32" SEDIMENT BARRIER
		RIP RAP APRON AT EXCAVATED DIVERSION SWALE OR FILTER SOCK DIVERSION SWALE DISCHARGING TO WATERBODY

THE LOCATIONS OF TRENCH PLUGS HAVE BEEN SHOWN ON THE PROFILE ONLY.
 AT A MINIMUM, WATERBARS SHALL BE LOCATED WITHIN 50 FT OF THE EDGES OF WETLANDS AND WATERBODIES AND TRENCH PLUGS SHALL BE LOCATED AT THE PHYSICAL EDGES OF ALL WETLANDS AND WATERBODIES.
 THE DIRECTION OF THE ARROW IN THE WATERBAR SYMBOL REPRESENTS THE DIRECTION OF FLOW OF THE WATER INTERCEPTED BY THE WATERBAR IN PLAN VIEW. THE WATERBAR SHALL BE INSTALLED AT A MAXIMUM 2% SLOPE IN THE DIRECTION OF THE ARROW.
 * SOILS IDENTIFIED BY NRCS AS ACID-PRODUCING WITH A pH LESS THAN 4.0.
 ** POTENTIALLY SIGNIFICANT ACID-PRODUCING BEDROCK IDENTIFIED BY PADEP, PAOS AND PA DCNR.

WATERSHED ABBREVIATIONS

WF - WARM WATER FISHES
 CW - COLD WATER FISHES
 MF - MIGRATORY FISHES
 TSF - TROUT STOCKING
 HQ - HIGH QUALITY WATERS
 EV - EXCEPTIONAL VALUE WATER

E & S DETAIL GROUP LEGEND FOR PIPELINE CROSSINGS

WETLANDS	WATERBODIES	WETLAND/WATERBODIES	RAILROADS
W (MAT), WEC, WEC2, WEC3, WEC4, WEC5, WEC6, WEC7, WEC8, WEC9, WEC10, WEC11, WEC12, WEC13, WEC14, WEC15, WEC16, WEC17, WEC18, WEC19, WEC20, WEC21, WEC22, WEC23, WEC24, WEC25, WEC26, WEC27, WEC28, WEC29, WEC30, WEC31, WEC32, WEC33, WEC34, WEC35, WEC36, WEC37, WEC38, WEC39, WEC40, WEC41, WEC42, WEC43, WEC44, WEC45, WEC46, WEC47, WEC48, WEC49, WEC50, WEC51, WEC52, WEC53, WEC54, WEC55, WEC56, WEC57, WEC58, WEC59, WEC60, WEC61, WEC62, WEC63, WEC64, WEC65, WEC66, WEC67, WEC68, WEC69, WEC70, WEC71, WEC72, WEC73, WEC74, WEC75, WEC76, WEC77, WEC78, WEC79, WEC80, WEC81, WEC82, WEC83, WEC84, WEC85, WEC86, WEC87, WEC88, WEC89, WEC90, WEC91, WEC92, WEC93, WEC94, WEC95, WEC96, WEC97, WEC98, WEC99, WEC100	S (BEC, CD, DFX, FX, HD, HDH, MNC, RSS, SBR, WBL, PWB)	WS (BEC, CD, DFX, FX, HD, HDH, MNC, RSS, SBR, WBL, PWB)	RR (RC, RX, RW, RY, RZ)
GENERAL E&S FIGURES	GENERAL E&S FIGURES	GENERAL E&S FIGURES	ROADS
CFS, CWC, DS, ECB, FD, FTS, MAT, MAT2, MAT3, PWB, RAF, RAD, RFD, SF, SFF, TD, TP, TS.1, TS.2, TS.3, TTS, VCH, WB, WB.1, PWB, RFD	CFS, CWC, DS, ECB, FD, FTS, MAT, MAT2, MAT3, PWB, RAF, RAD, RFD, SF, SFF, TD, TP, TS.1, TS.2, TS.3, TTS, VCH, WB, WB.1, PWB, RFD	CFS, CWC, DS, ECB, FD, FTS, MAT, MAT2, MAT3, PWB, RAF, RAD, RFD, SF, SFF, TD, TP, TS.1, TS.2, TS.3, TTS, VCH, WB, WB.1, PWB, RFD	R1 (RC, RX, RW, RY, RZ), R2 (RC, RX, RW, RY, RZ)

SPECIAL PROTECTION WATERSHED

WETLANDS: W (MAT), WEC, WEC2, WEC3, WEC4, WEC5, WEC6, WEC7, WEC8, WEC9, WEC10, WEC11, WEC12, WEC13, WEC14, WEC15, WEC16, WEC17, WEC18, WEC19, WEC20, WEC21, WEC22, WEC23, WEC24, WEC25, WEC26, WEC27, WEC28, WEC29, WEC30, WEC31, WEC32, WEC33, WEC34, WEC35, WEC36, WEC37, WEC38, WEC39, WEC40, WEC41, WEC42, WEC43, WEC44, WEC45, WEC46, WEC47, WEC48, WEC49, WEC50, WEC51, WEC52, WEC53, WEC54, WEC55, WEC56, WEC57, WEC58, WEC59, WEC60, WEC61, WEC62, WEC63, WEC64, WEC65, WEC66, WEC67, WEC68, WEC69, WEC70, WEC71, WEC72, WEC73, WEC74, WEC75, WEC76, WEC77, WEC78, WEC79, WEC80, WEC81, WEC82, WEC83, WEC84, WEC85, WEC86, WEC87, WEC88, WEC89, WEC90, WEC91, WEC92, WEC93, WEC94, WEC95, WEC96, WEC97, WEC98, WEC99, WEC100

GENERAL NOTES

- THE E&S DETAIL NUMBERS NOTED ABOVE AND IN THE E&S DETAIL GROUP LEGEND CORRESPOND TO SPECIFIC DETAILS THAT ARE COMPRISED OF PADEP APPROVED BEST MANAGEMENT PRACTICES (BMP) AND SUPPLEMENTAL CONSTRUCTION DETAILS TO BE FOLLOWED AND/OR INSTALLED DURING CONSTRUCTION OF THE PIPELINE.
- SOILS LEGEND PROVIDED IN THE SOIL EROSION AND SEDIMENT CONTROL NARRATIVE.
- A SUMP SHALL BE INSTALLED AT THE END OF EACH WATERBAR IN HIGH QUALITY/EXCEPTIONAL VALUE WATERSHEDS AND WITHIN 100' OF STREAMS AND WETLANDS. IN ALL OTHER AREAS A WEIGHTED SEDIMENT FILTER TUBE SHALL BE USED. REFER TO THE BEST MANAGEMENT PRACTICES AND QUANTITIES PLAN SET FOR INSTALLATION.
- WATERSHEDS WITHOUT A FEMA-ESTABLISHED FLOODPLAIN, THE FLOODWAY IS CONSIDERED TO BE A 50-FT OFFSET MEASURED LATERALLY FROM THE PHYSICAL WATERBODY TOP OF BANK.
- CONTRACTOR TO SEGREGATE TOPSOILS IN ALL AGRICULTURAL, RESIDENTIAL AND WETLAND USE AREAS. THE EXISTING SUBGRADE SHALL BE SCARIFIED PRIOR TO TOPSOIL PLACEMENT IN ALL AREAS.
- REFER TO ACID PRODUCING SOILS AND BEDROCK CONTROL PLANS FOR MITIGATION MEASURES OF SOILS WITH A pH BELOW 4.0.
- PROPOSED CLEAN WATER CROSSING SHOWN HEREIN ARE TEMPORARY STORMWATER RUNOFF CONVEYANCE BMPs ASSOCIATED WITH THE CHAPTER 102 ESCGP-2 APPLICATION. NO FLOWS FROM REGULATED WATERWAYS ARE INTENDED TO BE CONVEYED WITHIN THESE BMPs.
- DURING THE CONSTRUCTION PHASE, IF SHALLOW BEDROCK IS PRESENT, THEN THE PIPELINE WILL BE INSTALLED THROUGH THE WATERBODY WITH A MINIMUM OF 2 FOOT OF COVER, AS THE REQUIRED 5 FOOT OF MINIMUM COVER WILL NOT BE FEASIBLE.
- EROSION CONTROL BLANKETS SHALL BE INSTALLED ON SLOPES 3:1 OR GREATER.

GENERAL NOTES

- THE E&S DETAIL NUMBERS NOTED ABOVE AND IN THE E&S DETAIL GROUP LEGEND CORRESPOND TO SPECIFIC DETAILS THAT ARE COMPRISED OF PADEP APPROVED BEST MANAGEMENT PRACTICES (BMP) AND SUPPLEMENTAL CONSTRUCTION DETAILS TO BE FOLLOWED AND/OR INSTALLED DURING CONSTRUCTION OF THE PIPELINE.
- SOILS LEGEND PROVIDED IN THE SOIL EROSION AND SEDIMENT CONTROL NARRATIVE.
- A SUMP SHALL BE INSTALLED AT THE END OF EACH WATERBAR IN HIGH QUALITY/EXCEPTIONAL VALUE WATERSHEDS AND WITHIN 100' OF STREAMS AND WETLANDS. IN ALL OTHER AREAS A WEIGHTED SEDIMENT FILTER TUBE SHALL BE USED. REFER TO THE BEST MANAGEMENT PRACTICES AND QUANTITIES PLAN SET FOR INSTALLATION.
- WATERSHEDS WITHOUT A FEMA-ESTABLISHED FLOODPLAIN, THE FLOODWAY IS CONSIDERED TO BE A 50-FT OFFSET MEASURED LATERALLY FROM THE PHYSICAL WATERBODY TOP OF BANK.
- CONTRACTOR TO SEGREGATE TOPSOILS IN ALL AGRICULTURAL, RESIDENTIAL AND WETLAND USE AREAS. THE EXISTING SUBGRADE SHALL BE SCARIFIED PRIOR TO TOPSOIL PLACEMENT IN ALL AREAS.
- REFER TO ACID PRODUCING SOILS AND BEDROCK CONTROL PLANS FOR MITIGATION MEASURES OF SOILS WITH A pH BELOW 4.0.
- PROPOSED CLEAN WATER CROSSING SHOWN HEREIN ARE TEMPORARY STORMWATER RUNOFF CONVEYANCE BMPs ASSOCIATED WITH THE CHAPTER 102 ESCGP-2 APPLICATION. NO FLOWS FROM REGULATED WATERWAYS ARE INTENDED TO BE CONVEYED WITHIN THESE BMPs.
- DURING THE CONSTRUCTION PHASE, IF SHALLOW BEDROCK IS PRESENT, THEN THE PIPELINE WILL BE INSTALLED THROUGH THE WATERBODY WITH A MINIMUM OF 2 FOOT OF COVER, AS THE REQUIRED 5 FOOT OF MINIMUM COVER WILL NOT BE FEASIBLE.
- EROSION CONTROL BLANKETS SHALL BE INSTALLED ON SLOPES 3:1 OR GREATER.

LAND USE LEGEND

5 - OPEN WATER	41 - DECIDUOUS FOREST LAND
11 - RESIDENTIAL	42 - EVERGREEN FOREST LAND
14 - TRANSPORTATION, UTILITY, AND COMMUNICATIONS	43 - MIXED FOREST LAND
15 - INDUSTRIAL AND COMMERCIAL	44 - FORESTED/CULTIVATED TIMBER OR FOREST LAND
21 - CROPLAND AND PASTURE	55 - RIVERS
22 - ORCHARDS, GROVES, VINEYARDS, NURSERIES	74 - BARE EXPOSED ROCK
25 - HAY FIELDS	75 - STRIP MINES, QUARRIES, AND GRAVEL
32 - SHRUB AND BRUSH RANGELAND	99 - HERBACEOUS OPENINGS

REVISIONS

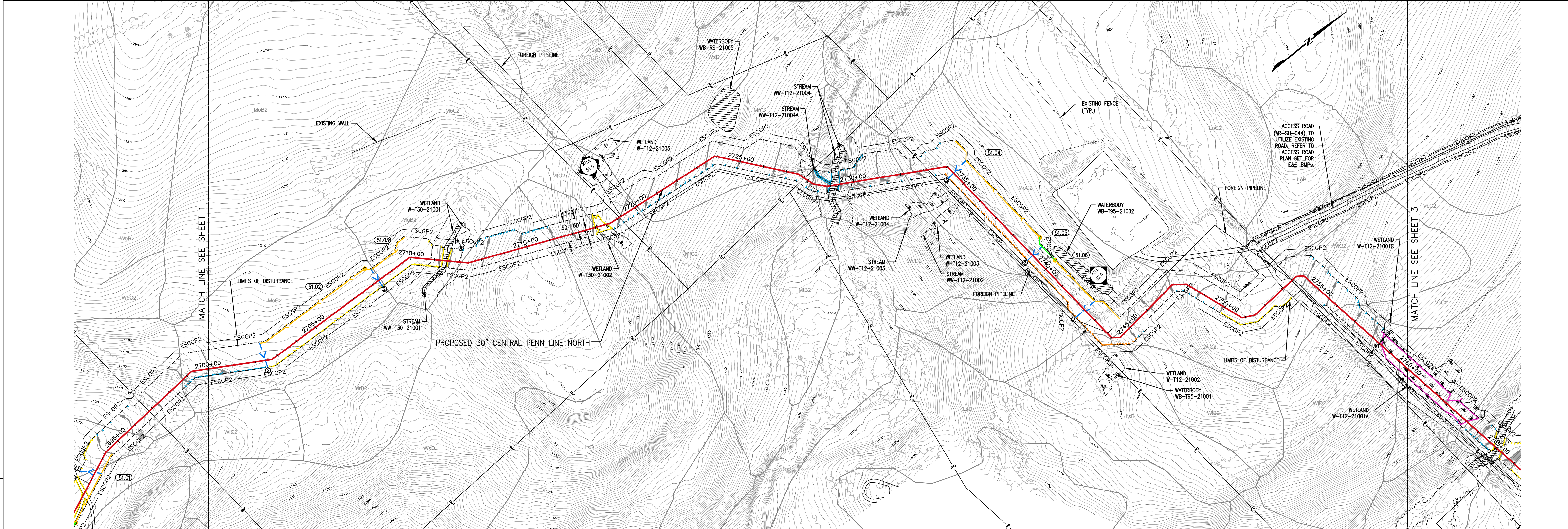
NO.	DATE	BY	DESCRIPTION	W.D. NO.	CHK.	APP.
0	08/28/2015	BL	ISSUED FOR PADEP SUBMITTAL	W01161481	BLK	AJB
1	12/02/2015	BL	ISSUED FOR PADEP RESUBMITTAL	W01161481	BLK	AJB
2	Oct. 2016	BL	PADEP TECHNICAL DEFICIENCY RESPONSE #1	W01161481	BLK	AJB

TRANSCONTINENTAL GAS PIPE LINE COMPANY, LLC
 SOIL EROSION & SEDIMENT CONTROL PLAN / SITE RESTORATION PLAN
 ATLANTIC SUNRISE PROJECT
 PROPOSED 30° CENTRAL PENN LINE NORTH
 SUSQUEHANNA COUNTY, PENNSYLVANIA

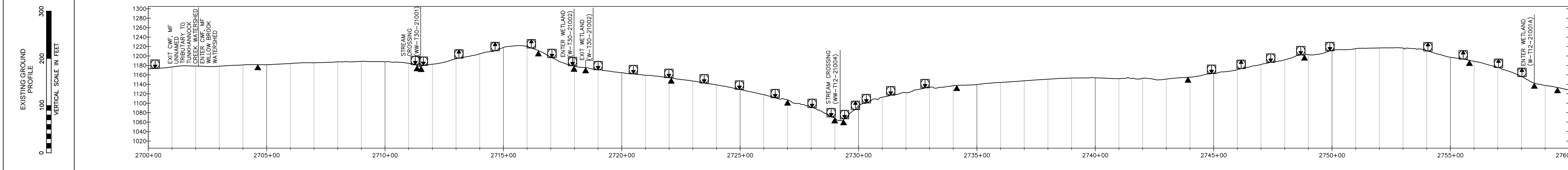
Drawn By: JMD DATE: 11/2014 ISSUED FOR BID: SCALE: AS NOTED
 Checked By: BDJ DATE: 03/13/2015 ISSUED FOR CONSTRUCTION: REVISION: 2
 Approved By: AJB DATE: 03/13/2015 DRAWING NUMBER: 24-1601-70-28-A/1683_3 SHEET 1 OF 7
 W01161481

Drawing Location & Name: G:\08314\1401\140909\010\ES_CUTSHEETS-004-SUS.dwg
 Date: 12/05/2015
 Drawn By: JMD
 Checked By: BDJ
 Approved By: AJB

LENOX TOWNSHIP



LAND USE	21	41	43	51	42	5	42	41	21	14	5	42	14	21	14	41	21	41	5
SOIL TYPE	MoC2	MoB2	WsD	LdD	MIC2	MIC2	MIC2	WeD2	MoC2	MoC2	MoC2	MoC2	MoC2	MoC2	MoC2	MoC2	MoC2	MoC2	MoC2
E & S DETAIL OR E & S DETAIL GROUP																			



AVERAGE % SLOPE	5%	1%	1%	6%	21%	19%	7%	12%	2%	23%	9%	21%	0%	30%	8%	2%	3%	10%	2%	12%	0%	13%	10%	17%	25%	11%
-----------------	----	----	----	----	-----	-----	----	-----	----	-----	----	-----	----	-----	----	----	----	-----	----	-----	----	-----	-----	-----	-----	-----

EROSION CONTROL LEGEND

WATERBAR SPACING	TRENCH PLUG SPACING	WATERBARS (SEE NOTE 4)
SLOPE (%) SPACING (FT)	SLOPE (%) SPACING (FT)	
<5 200	<5 1000	PERMANENT TRENCH PLUG
5-15 150	5-15 500	EXCAVATED DIVERSION SWALE
>15-25 100	>15-25 300	FILTER SOCK DIVERSION SWALE
>25-30 100	>25-30 200	TEMPORARY DIVERSION SWALE ID
>30 50	35-100 100	12" SEDIMENT BARRIER
		18" SEDIMENT BARRIER
		24" SEDIMENT BARRIER
		32" SEDIMENT BARRIER
		RIP RAP APRON AT EXCAVATED DIVERSION SWALE OR FILTER SOCK DIVERSION SWALE DISCHARGING TO WATERBODY
		FLUME CHANNEL CROSSING W/ RIPRAP APRON AND W/ OR W/O LEVEL SPREADER (SEE BMP NOTE 2)
		FLUME CHANNEL CROSSING SLOPE RANGE ID (SEE BMP NOTE 3)
		BORER/RECEIVING PIT

THE LOCATIONS OF TRENCH PLUGS HAVE BEEN SHOWN ON THE PROFILE ONLY.
 AT A MINIMUM, WATERBARS SHALL BE LOCATED WITHIN 50 FT OF THE EDGES OF WETLANDS AND WATERBODIES AND TRENCH PLUGS SHALL BE LOCATED AT THE PHYSICAL EDGES OF ALL WETLANDS AND WATERBODIES.
 THE DIRECTION OF THE ARROW IN THE WATERBAR SYMBOL REPRESENTS THE DIRECTION OF FLOW OF THE WATER INTERCEPTED BY THE WATERBAR IN PLAN VIEW. THE WATERBAR SHALL BE INSTALLED AT A MAXIMUM 2% SLOPE IN THE DIRECTION OF THE ARROW.
 * SOILS IDENTIFIED BY NRCS AS ACID-PRODUCING WITH A pH LESS THAN 4.0.
 ** POTENTIALLY SIGNIFICANT ACID-PRODUCING BEDROCK IDENTIFIED BY PADEP, PAOS AND PA DCMR.

WATERSHED ABBREVIATIONS
 WFW - WARM WATER FISHES
 CWF - COLD WATER FISHES
 WF - WETLAND FISHES
 MF - MIGRATORY FISHES
 TSF - TROUT STOCKING
 HQ - HIGH QUALITY WATERS
 EV - EXCEPTIONAL VALUE WATER

E & S DETAIL GROUP LEGEND FOR PIPELINE CROSSINGS

WETLANDS	WATERBODIES	WETLAND/WATERBODIES	RAILROADS	ROADS
W (MAT, WEC, WEC2, WEC3, WEC4, WEC5, WEC6, WEC7, WEC8, WEC9, WEC10, WEC11, WEC12, WEC13, WEC14, WEC15, WEC16, WEC17, WEC18, WEC19, WEC20, WEC21, WEC22, WEC23, WEC24, WEC25, WEC26, WEC27, WEC28, WEC29, WEC30, WEC31, WEC32, WEC33, WEC34, WEC35, WEC36, WEC37, WEC38, WEC39, WEC40, WEC41, WEC42, WEC43, WEC44, WEC45, WEC46, WEC47, WEC48, WEC49, WEC50, WEC51, WEC52, WEC53, WEC54, WEC55, WEC56, WEC57, WEC58, WEC59, WEC60, WEC61, WEC62, WEC63, WEC64, WEC65, WEC66, WEC67, WEC68, WEC69, WEC70, WEC71, WEC72, WEC73, WEC74, WEC75, WEC76, WEC77, WEC78, WEC79, WEC80, WEC81, WEC82, WEC83, WEC84, WEC85, WEC86, WEC87, WEC88, WEC89, WEC90, WEC91, WEC92, WEC93, WEC94, WEC95, WEC96, WEC97, WEC98, WEC99, WEC100)	S (BEC, CD, DFX, FX, HD, HD2, HD3, HD4, HD5, HD6, HD7, HD8, HD9, HD10, HD11, HD12, HD13, HD14, HD15, HD16, HD17, HD18, HD19, HD20, HD21, HD22, HD23, HD24, HD25, HD26, HD27, HD28, HD29, HD30, HD31, HD32, HD33, HD34, HD35, HD36, HD37, HD38, HD39, HD40, HD41, HD42, HD43, HD44, HD45, HD46, HD47, HD48, HD49, HD50, HD51, HD52, HD53, HD54, HD55, HD56, HD57, HD58, HD59, HD60, HD61, HD62, HD63, HD64, HD65, HD66, HD67, HD68, HD69, HD70, HD71, HD72, HD73, HD74, HD75, HD76, HD77, HD78, HD79, HD80, HD81, HD82, HD83, HD84, HD85, HD86, HD87, HD88, HD89, HD90, HD91, HD92, HD93, HD94, HD95, HD96, HD97, HD98, HD99, HD100)	WS (BEC, CD, DFX, FX, HD, HD2, HD3, HD4, HD5, HD6, HD7, HD8, HD9, HD10, HD11, HD12, HD13, HD14, HD15, HD16, HD17, HD18, HD19, HD20, HD21, HD22, HD23, HD24, HD25, HD26, HD27, HD28, HD29, HD30, HD31, HD32, HD33, HD34, HD35, HD36, HD37, HD38, HD39, HD40, HD41, HD42, HD43, HD44, HD45, HD46, HD47, HD48, HD49, HD50, HD51, HD52, HD53, HD54, HD55, HD56, HD57, HD58, HD59, HD60, HD61, HD62, HD63, HD64, HD65, HD66, HD67, HD68, HD69, HD70, HD71, HD72, HD73, HD74, HD75, HD76, HD77, HD78, HD79, HD80, HD81, HD82, HD83, HD84, HD85, HD86, HD87, HD88, HD89, HD90, HD91, HD92, HD93, HD94, HD95, HD96, HD97, HD98, HD99, HD100)	RR (CE, CE2, CE3, CE4, CE5, CE6, CE7, CE8, CE9, CE10, CE11, CE12, CE13, CE14, CE15, CE16, CE17, CE18, CE19, CE20, CE21, CE22, CE23, CE24, CE25, CE26, CE27, CE28, CE29, CE30, CE31, CE32, CE33, CE34, CE35, CE36, CE37, CE38, CE39, CE40, CE41, CE42, CE43, CE44, CE45, CE46, CE47, CE48, CE49, CE50, CE51, CE52, CE53, CE54, CE55, CE56, CE57, CE58, CE59, CE60, CE61, CE62, CE63, CE64, CE65, CE66, CE67, CE68, CE69, CE70, CE71, CE72, CE73, CE74, CE75, CE76, CE77, CE78, CE79, CE80, CE81, CE82, CE83, CE84, CE85, CE86, CE87, CE88, CE89, CE90, CE91, CE92, CE93, CE94, CE95, CE96, CE97, CE98, CE99, CE100)	R1 (CE, CE2, CE3, CE4, CE5, CE6, CE7, CE8, CE9, CE10, CE11, CE12, CE13, CE14, CE15, CE16, CE17, CE18, CE19, CE20, CE21, CE22, CE23, CE24, CE25, CE26, CE27, CE28, CE29, CE30, CE31, CE32, CE33, CE34, CE35, CE36, CE37, CE38, CE39, CE40, CE41, CE42, CE43, CE44, CE45, CE46, CE47, CE48, CE49, CE50, CE51, CE52, CE53, CE54, CE55, CE56, CE57, CE58, CE59, CE60, CE61, CE62, CE63, CE64, CE65, CE66, CE67, CE68, CE69, CE70, CE71, CE72, CE73, CE74, CE75, CE76, CE77, CE78, CE79, CE80, CE81, CE82, CE83, CE84, CE85, CE86, CE87, CE88, CE89, CE90, CE91, CE92, CE93, CE94, CE95, CE96, CE97, CE98, CE99, CE100)

GENERAL E&S FIGURES
 CFS, CWC, DS, ECB, FD, PS, MAT.1, MAT.2, MAT.3, PWB, RAF, RAD, RFD, SF, SSE, TD, TP, TS.1, TS.2, TS.3, TTS, VCH, WB, WB.1, PWB, RGF

SPECIAL PROTECTION WATERSHED
 WETLANDS: SP (MAT, WEC, WEC2, WEC3, WEC4, WEC5, WEC6, WEC7, WEC8, WEC9, WEC10, WEC11, WEC12, WEC13, WEC14, WEC15, WEC16, WEC17, WEC18, WEC19, WEC20, WEC21, WEC22, WEC23, WEC24, WEC25, WEC26, WEC27, WEC28, WEC29, WEC30, WEC31, WEC32, WEC33, WEC34, WEC35, WEC36, WEC37, WEC38, WEC39, WEC40, WEC41, WEC42, WEC43, WEC44, WEC45, WEC46, WEC47, WEC48, WEC49, WEC50, WEC51, WEC52, WEC53, WEC54, WEC55, WEC56, WEC57, WEC58, WEC59, WEC60, WEC61, WEC62, WEC63, WEC64, WEC65, WEC66, WEC67, WEC68, WEC69, WEC70, WEC71, WEC72, WEC73, WEC74, WEC75, WEC76, WEC77, WEC78, WEC79, WEC80, WEC81, WEC82, WEC83, WEC84, WEC85, WEC86, WEC87, WEC88, WEC89, WEC90, WEC91, WEC92, WEC93, WEC94, WEC95, WEC96, WEC97, WEC98, WEC99, WEC100)
 WATERBODIES: SP (BEC, CD, DFX, FX, HD, HD2, HD3, HD4, HD5, HD6, HD7, HD8, HD9, HD10, HD11, HD12, HD13, HD14, HD15, HD16, HD17, HD18, HD19, HD20, HD21, HD22, HD23, HD24, HD25, HD26, HD27, HD28, HD29, HD30, HD31, HD32, HD33, HD34, HD35, HD36, HD37, HD38, HD39, HD40, HD41, HD42, HD43, HD44, HD45, HD46, HD47, HD48, HD49, HD50, HD51, HD52, HD53, HD54, HD55, HD56, HD57, HD58, HD59, HD60, HD61, HD62, HD63, HD64, HD65, HD66, HD67, HD68, HD69, HD70, HD71, HD72, HD73, HD74, HD75, HD76, HD77, HD78, HD79, HD80, HD81, HD82, HD83, HD84, HD85, HD86, HD87, HD88, HD89, HD90, HD91, HD92, HD93, HD94, HD95, HD96, HD97, HD98, HD99, HD100)
 WETLAND/WATERBODIES: SP (BEC, CD, DFX, FX, HD, HD2, HD3, HD4, HD5, HD6, HD7, HD8, HD9, HD10, HD11, HD12, HD13, HD14, HD15, HD16, HD17, HD18, HD19, HD20, HD21, HD22, HD23, HD24, HD25, HD26, HD27, HD28, HD29, HD30, HD31, HD32, HD33, HD34, HD35, HD36, HD37, HD38, HD39, HD40, HD41, HD42, HD43, HD44, HD45, HD46, HD47, HD48, HD49, HD50, HD51, HD52, HD53, HD54, HD55, HD56, HD57, HD58, HD59, HD60, HD61, HD62, HD63, HD64, HD65, HD66, HD67, HD68, HD69, HD70, HD71, HD72, HD73, HD74, HD75, HD76, HD77, HD78, HD79, HD80, HD81, HD82, HD83, HD84, HD85, HD86, HD87, HD88, HD89, HD90, HD91, HD92, HD93, HD94, HD95, HD96, HD97, HD98, HD99, HD100)
 RAILROADS: SP (CE, CE2, CE3, CE4, CE5, CE6, CE7, CE8, CE9, CE10, CE11, CE12, CE13, CE14, CE15, CE16, CE17, CE18, CE19, CE20, CE21, CE22, CE23, CE24, CE25, CE26, CE27, CE28, CE29, CE30, CE31, CE32, CE33, CE34, CE35, CE36, CE37, CE38, CE39, CE40, CE41, CE42, CE43, CE44, CE45, CE46, CE47, CE48, CE49, CE50, CE51, CE52, CE53, CE54, CE55, CE56, CE57, CE58, CE59, CE60, CE61, CE62, CE63, CE64, CE65, CE66, CE67, CE68, CE69, CE70, CE71, CE72, CE73, CE74, CE75, CE76, CE77, CE78, CE79, CE80, CE81, CE82, CE83, CE84, CE85, CE86, CE87, CE88, CE89, CE90, CE91, CE92, CE93, CE94, CE95, CE96, CE97, CE98, CE99, CE100)
 ROADS: SP (R1, R2, R3, R4, R5, R6, R7, R8, R9, R10, R11, R12, R13, R14, R15, R16, R17, R18, R19, R20, R21, R22, R23, R24, R25, R26, R27, R28, R29, R30, R31, R32, R33, R34, R35, R36, R37, R38, R39, R40, R41, R42, R43, R44, R45, R46, R47, R48, R49, R50, R51, R52, R53, R54, R55, R56, R57, R58, R59, R60, R61, R62, R63, R64, R65, R66, R67, R68, R69, R70, R71, R72, R73, R74, R75, R76, R77, R78, R79, R80, R81, R82, R83, R84, R85, R86, R87, R88, R89, R90, R91, R92, R93, R94, R95, R96, R97, R98, R99, R100)

BMP NOTES:
 1. DETAILS IN THIS LEGEND ARE NOT COMPREHENSIVE AND ONLY REFER TO BMPs RELATED TO PIPELINE CROSSINGS. ADDITIONAL BMPs ARE PROVIDED FOR ACCESS ROADS & FACILITIES.
 2. REFER TO BEST MANAGEMENT AND QUANTITIES PLAN SET FOR DESIGN, NOTES AND DETAILS.
 3. REFER TO CLEAN WATER CROSSING (CWC) DETAIL IN THE BEST MANAGEMENT AND QUANTITIES PLAN SET FOR SLOPE RANGES.
 4. THE APPROX. LOCATION AND TYPE OF SEDIMENT BARRIERS TO BE INSTALLED ALONG THE CONSTRUCTION WORKSPACE ARE LOCATED IN TABLES IN THE BEST MANAGEMENT PRACTICES AND QUANTITIES PLAN SET.

GENERAL NOTES

- THE E&S DETAIL NUMBERS NOTED ABOVE AND IN THE E&S DETAIL GROUP LEGEND CORRESPOND TO SPECIFIC DETAILS THAT ARE COMPRISED OF PADEP APPROVED BEST MANAGEMENT PRACTICES (BMP) AND SUPPLEMENTAL CONSTRUCTION DETAILS TO BE FOLLOWED AND/OR INSTALLED DURING CONSTRUCTION OF THE PIPELINE.
- SOILS LEGEND PROVIDED IN THE SOIL EROSION AND SEDIMENT CONTROL NARRATIVE.
- A SUMP SHALL BE INSTALLED AT THE END OF EACH WATERBAR IN HIGH QUALITY/EXCEPTIONAL VALUE WATERSHEDS AND WITHIN 100' OF STREAMS AND WETLANDS. IN ALL OTHER AREAS A WEIGHTED SEDIMENT FILTER TUBE SHALL BE USED. REFER TO THE BEST MANAGEMENT PRACTICES AND QUANTITIES PLAN SET FOR INSTALLATION.
- WATERBODIES WITHOUT A FEMA-ESTABLISHED FLOODPLAIN, THE FLOODWAY IS COINCIDENT WITH A 50-FT OFFSET MEASURED LATERALLY FROM THE PHYSICAL WATERBODY TOP OF BANK.
- CONTRACTOR TO SEGREGATE TOPSOILS IN ALL AGRICULTURAL, RESIDENTIAL AND WETLAND USE AREAS. THE EXISTING SUBGRADE SHALL BE SCARIFIED PRIOR TO TOPSOIL PLACEMENT IN ALL AREAS.
- REFER TO ACID PRODUCING SOILS AND BEDROCK CONTROL PLANS FOR MITIGATION MEASURES OF SOILS WITH A pH BELOW 4.0.
- PROPOSED CLEAN WATER CROSSING SHOWN HEREIN ARE TEMPORARY STORMWATER RUNOFF CONVEYANCE BMPs ASSOCIATED WITH THE CHAPTER 102 ESCOP-2 APPLICATION. NO FLOWS FROM REGULATED WATERWAYS ARE INTENDED TO BE CONVEYED WITHIN THESE BMPs.
- DURING THE CONSTRUCTION PHASE, IF SHALLOW BEDROCK IS PRESENT, THEN THE PIPELINE WILL BE INSTALLED THROUGH THE WATERBODY WITH A MINIMUM OF 2 FOOT OF COVER, AS THE REQUIRED 5 FOOT OF MINIMUM COVER WILL NOT BE FEASIBLE.
- EROSION CONTROL BLANKETS SHALL BE INSTALLED ON SLOPES 3:1 OR GREATER.

LAND USE LEGEND

5 - OPEN WATER	41 - DECIDUOUS FOREST LAND
11 - RESIDENTIAL	42 - EVERGREEN FOREST LAND
14 - TRANSPORTATION, UTILITY, AND COMMUNICATIONS	43 - MIXED FOREST LAND
15 - INDUSTRIAL AND COMMERCIAL	44 - FORESTED/CULTIVATED TIMBER OR FOREST LAND
21 - ORCHARD AND PASTURE	55 - RIVERS
22 - CROPLANDS, GROVES, VINEYARDS, NURSERIES	74 - BARE EXPOSED ROCK
25 - HAY FIELDS	75 - STRIP MINES, QUARRIES, AND GRAVEL
32 - SHRUB AND BRUSH RANGELAND	99 - HERBACEOUS OPENINGS

REVISIONS

NO.	DATE	BY	DESCRIPTION	W.D. NO.	CHK.	APP.
0	08/28/2015	BL	ISSUED FOR PADEP SUBMITTAL	W01161481	BLK	AJB
1	12/02/2015	BL	ISSUED FOR PADEP RESUBMITTAL	W01161481	BLK	AJB
2	Oct. 2016	BL	PADEP TECHNICAL DEFICIENCY RESPONSE #1	W01161481	BLK	AJB

TRANSCONTINENTAL GAS PIPE LINE COMPANY, LLC
 SOIL EROSION & SEDIMENT CONTROL PLAN / SITE RESTORATION PLAN
 ATLANTIC SUNRISE PROJECT
 PROPOSED 30° CENTRAL PENN LINE NORTH
 M.P. 51.14 TO M.P. 52.27
 SUSQUEHANNA COUNTY, PENNSYLVANIA

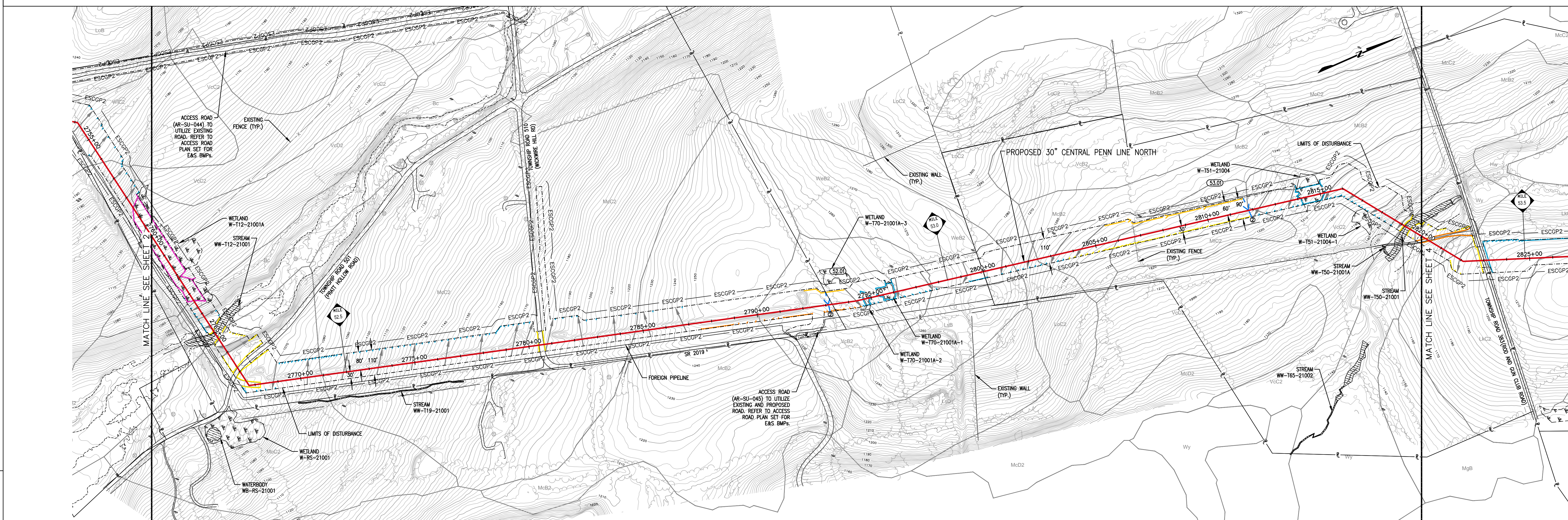
WILLIAMS

DRAWN BY: JMD DATE: 11/2014 ISSUED FOR BID: SCALE: AS NOTED
 CHECKED BY: BDK DATE: 03/13/2015 ISSUED FOR CONSTRUCTION: REVISION: 2
 APPROVED BY: AJB DATE: 03/13/2015 DRAWING NUMBER: 24-1601-70-28-A/1683_3 SHEET 2 OF 7
 W01161481

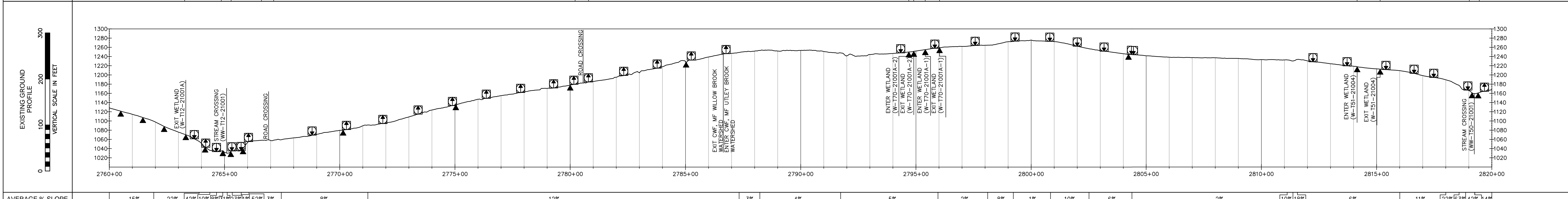
Drawing Location & Name: G:\080514\140\140905\010-CP\PLAN\PL_P1404909(10)_ES_CUTSHEETS-004-SUS.dwg
 Date/Time: ceterent Nov 11, 2016 10:22:33am
 Drawing Location & Name: G:\080514\140\140905\010-CP\PLAN\PL_P1404909(10)_ES_CUTSHEETS-004-SUS.dwg

OWNERSHIP	PA-SU-009.000 241.00-2.030.00.000.	TOWNSHIP ROAD 501 (PRAIT HOLLOW ROAD) PA-SU-009.5.RD	PA-SU-009.000 241.00-2.030.00.000.	TOWNSHIP ROAD 510 (WICKWARE HILL RD) PA-SU-009.6.RD	PA-SU-009.000 241.00-2.030.00.000.	PA-SU-016.000 241.00-2.029.00.000.	PA-SU-018.000 241.00-2.028.00.000.
-----------	---------------------------------------	--	---------------------------------------	---	---------------------------------------	---------------------------------------	---------------------------------------

LENOX TOWNSHIP



LAND USE	5	32	43	5	43	41	14	41	32	41	21	41	5	21	41	5	41
SOIL TYPE	VcD2	Bc	McC2	McC2	McC2	McB2	McB2	VcB2	WeB2	LoC2	McB2	McC2	VcC2	Wy			
E & S DETAIL OR E & S DETAIL GROUP	W	S	R1			R1		W	W				W				



AVERAGE % SLOPE	15%	22%	42%	10%	8%	12%	3%	4%	5%	2%	8%	1%	10%	6%	2%	10%	18%	6%	11%	22%	6.3%	42%	14%
-----------------	-----	-----	-----	-----	----	-----	----	----	----	----	----	----	-----	----	----	-----	-----	----	-----	-----	------	-----	-----

EROSION CONTROL LEGEND

WATERBAR SPACING	TRENCH PLUG SPACING	WATERBARS (SEE NOTE 4)
SLOPE (%) SPACING (FT)	SLOPE (%) SPACING (FT)	
<5 200	<5 1000	PERMANENT TRENCH PLUG
5-15 150	5-15 500	EXCAVATED DIVERSION SWALE
15-30 100	>15-25 300	FILTER SOCK DIVERSION SWALE
>30 50	25-35 200	TEMPORARY DIVERSION SWALE ID (100.4)
	35-100 100	12" SEDIMENT BARRIER
		18" SEDIMENT BARRIER
		24" SEDIMENT BARRIER
		32" SEDIMENT BARRIER
		RIP RAP APRON AT EXCAVATED DIVERSION SWALE OR FILTER SOCK DIVERSION SWALE DISCHARGING TO WATERBODY
		FLUME CHANNEL CROSSING W/ RIPRAP APRON AND W/ OR W/O LEVEL SPREADER (SEE BMP NOTE 2)
		FLUME CHANNEL CROSSING SLOPE RANGE ID (SEE BMP NOTE 3)
		BORER/RECEIVING PIT

THE LOCATIONS OF TRENCH PLUGS HAVE BEEN SHOWN ON THE PROFILE ONLY.
AT A MINIMUM, WATERBARS SHALL BE LOCATED WITHIN 50 FT OF THE EDGES OF WETLANDS AND WATERBODIES AND TRENCH PLUGS SHALL BE LOCATED AT THE PHYSICAL EDGES OF ALL WETLANDS AND WATERBODIES.
THE DIRECTION OF THE ARROW IN THE WATERBAR SYMBOL REPRESENTS THE DIRECTION OF FLOW OF THE WATER INTERCEPTED BY THE WATERBAR IN PLAN VIEW. THE WATERBAR SHALL BE INSTALLED AT A MAXIMUM 2% SLOPE IN THE DIRECTION OF THE ARROW.
* SOILS IDENTIFIED BY NRCS AS ACID-PRODUCING WITH A pH LESS THAN 4.0.
** POTENTIALLY SIGNIFICANT ACID-PRODUCING BEDROCK IDENTIFIED BY PADEP, PAQS AND PA DCMR.

WATERSHED ABBREVIATIONS
WVF - WARM WATER FISHES
CWF - COLD WATER FISHES
MF - MIGRATORY FISHES
TSF - TROUT STOCKING
HQ - HIGH QUALITY WATERS
EV - EXCEPTIONAL VALUE WATER

E & S DETAIL GROUP LEGEND FOR PIPELINE CROSSINGS

WETLANDS	WATERBODIES	WETLAND/WATERBODIES	RAILROADS
W (MAT, MCC, WEC, PWB)	S (BEC, CD, OPR, FX, HSD, MNC, RSS, SBR, WBL, PWB)	WS (BEC, CD, OPR, FX, HSD, MNC, RSS, SBR, WBL, PWB)	RR (RCX, R2)
GENERAL E&S FIGURES	SPECIAL PROTECTION WATERSHED	ROADS	ROADS
CFS, CWC, DS, ECB, FD, PS, MAT, M2, M3, PWB, RAF, RAD, RFD, SF, SSE, TD, TP, TS.1, TS.2, TS.3, TTS, VCH, WB, WBL, PWB, R2F	SP (MAT, MCC, WEC, PWB), S (BEC, CD, OPR, FX, HSD, MNC, RSS, SBR, WBL, PWB)	R1 (RCX, R1), R2 (RCX, R2)	R1 (RCX, R1), R2 (RCX, R2)

BMP NOTES:
1. DETAILS IN THIS LEGEND ARE NOT COMPREHENSIVE AND ONLY REFER TO BMPs RELATED TO PIPELINE CROSSINGS. ADDITIONAL BMPs ARE PROVIDED FOR ACCESS ROADS & FACILITIES.
2. REFER TO BEST MANAGEMENT AND QUANTITIES PLAN SET FOR DESIGN, NOTES AND DETAILS.
3. REFER TO CLEAN WATER CROSSING (CWC) DETAIL IN THE BEST MANAGEMENT AND QUANTITIES PLAN SET FOR SLOPE RANGES.
4. THE APPROX. LOCATION AND TYPE OF SEDIMENT BARRIERS TO BE INSTALLED ALONG THE CONSTRUCTION WORKSPACE ARE LOCATED IN TABLES IN THE BEST MANAGEMENT PRACTICES AND QUANTITIES PLAN SET.

GENERAL NOTES

- THE E&S DETAIL NUMBERS NOTED ABOVE AND IN THE E&S DETAIL GROUP LEGEND CORRESPOND TO SPECIFIC DETAILS THAT ARE COMPRISED OF PADEP APPROVED BEST MANAGEMENT PRACTICES (BMP) AND SUPPLEMENTAL CONSTRUCTION DETAILS TO BE FOLLOWED AND/OR INSTALLED DURING CONSTRUCTION OF THE PIPELINE.
- SOILS LEGEND PROVIDED IN THE SOIL EROSION AND SEDIMENT CONTROL NARRATIVE.
- A SUMP SHALL BE INSTALLED AT THE END OF EACH WATERBAR IN HIGH QUALITY/EXCEPTIONAL VALUE WATERSHEDS AND WITHIN 100' OF STREAMS AND WETLANDS. IN ALL OTHER AREAS A WEIGHTED SEDIMENT FILTER TUBE SHALL BE USED. REFER TO THE BEST MANAGEMENT PRACTICES AND QUANTITIES PLAN SET FOR INSTALLATION.
- WATERSHEDS WITHOUT A FIRM-ESTABLISHED FLOODPLAIN, THE FLOODWAY IS COINCIDENT WITH A 50-FT OFFSET MEASURED LATERALLY FROM THE PHYSICAL WATERBODY TOP OF BANK.
- CONTRACTOR TO SEGREGATE TOPSOILS IN ALL AGRICULTURAL, RESIDENTIAL AND WETLAND USE AREAS. THE EXISTING SUBGRADE SHALL BE SCARIFIED PRIOR TO TOPSOIL PLACEMENT IN ALL AREAS.
- REFER TO ACID PRODUCING SOILS AND BEDROCK CONTROL PLANS FOR MITIGATION MEASURES OF SOILS WITH A pH BELOW 4.0.
- PROPOSED CLEAN WATER CROSSING SHOWN HEREIN ARE TEMPORARY STORMWATER RUNOFF CONVEYANCE BMPs ASSOCIATED WITH THE CHAPTER 102 ESCGP-2 APPLICATION. NO FLOWS FROM REGULATED WATERWAYS ARE INTENDED TO BE CONVEYED WITHIN THESE BMPs.
- DURING THE CONSTRUCTION PHASE, IF SHALLOW BEDROCK IS PRESENT, THEN THE PIPELINE WILL BE INSTALLED THROUGH THE WATERBODY WITH A MINIMUM OF 2 FOOT OF COVER, AS THE REQUIRED 5 FOOT OF MINIMUM COVER WILL NOT BE FEASIBLE.
- EROSION CONTROL BLANKETS SHALL BE INSTALLED ON SLOPES 3:1 OR GREATER.

LAND USE LEGEND

5 - OPEN WATER	41 - DECIDUOUS FOREST LAND
11 - RESIDENTIAL	42 - EVERGREEN FOREST LAND
14 - TRANSPORTATION, UTILITY, AND COMMUNICATIONS	43 - MIXED FOREST LAND
15 - INDUSTRIAL AND COMMERCIAL	44 - FORESTED/CULTIVATED TIMBER OR FOREST LAND
21 - CROPLAND AND PASTURE	55 - RIVERS
22 - ORCHARDS, GROVES, VINEYARDS, NURSERIES	74 - BARE EXPOSED ROCK
25 - HAY FIELDS	75 - STRIP MINES, QUARRIES, AND GRAVEL
32 - SHRUB AND BRUSH RANGELAND	99 - HERBACEOUS OPENINGS

REVISIONS

NO.	DATE	BY	DESCRIPTION	W.D. NO.	CHK.	APP.
0	08/28/2015	BL	ISSUED FOR PADEP SUBMITTAL	W01161481	BLK	AJB
1	12/02/2015	BL	ISSUED FOR PADEP RESUBMITTAL	W01161481	BLK	AJB
2	Oct. 2016	BL	PADEP TECHNICAL DEFICIENCY RESPONSE #1	W01161481	BLK	AJB

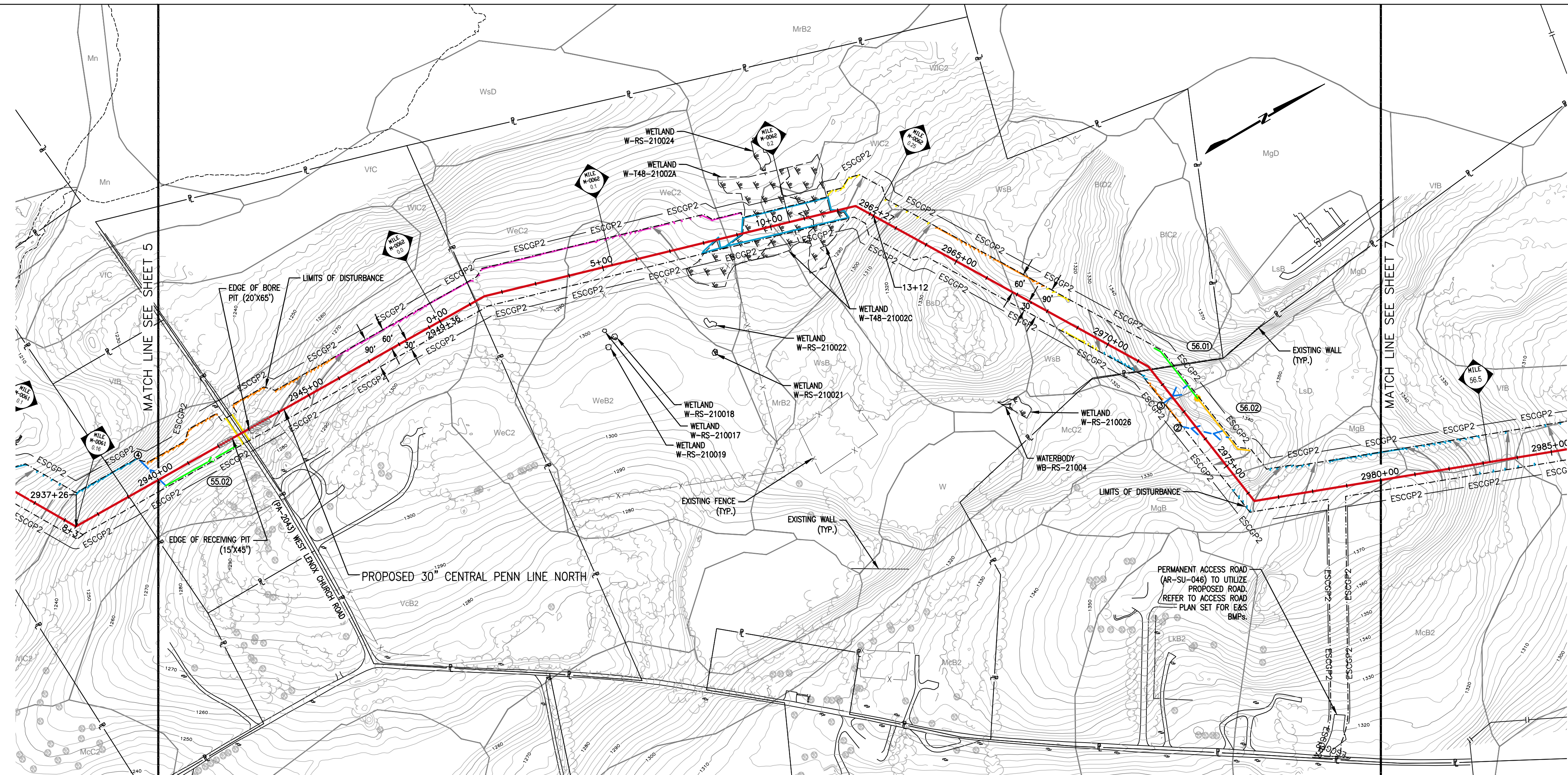
TRANSCONTINENTAL GAS PIPE LINE COMPANY, LLC
SOIL EROSION & SEDIMENT CONTROL PLAN / SITE RESTORATION PLAN
ATLANTIC SUNRISE PROJECT
PROPOSED 30" CENTRAL PENN LINE NORTH
M.P. 52.27 TO M.P. 53.41
SUSQUEHANNA COUNTY, PENNSYLVANIA

APPROVED BY: DATE: 11/2014
CHECKED BY: DATE: 03/13/2015
APPROVED BY: DATE: 03/13/2015
DRAWING NUMBER: 24-1601-70-28-A/1683_3

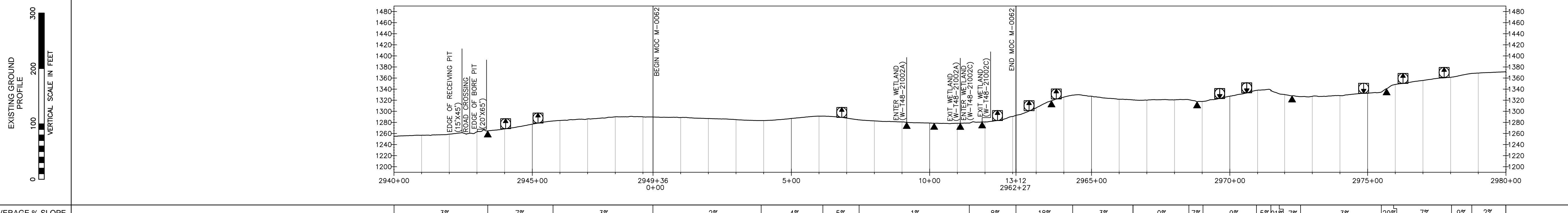
SCALE: AS NOTED
REVISION: 2
SHEET 3 OF 7

Drawing Location & Name: G:\08514\140\140905\010-CP\PLAN\PL_P1404909(10)_ES_OUTSHEETS-004-SUS.dwg
 Drawn By & Date/Time: cesterw Nov 11, 2016 10:22:33am
 Drawing Location & Name: G:\08514\140\140905\010-CP\PLAN\PL_P1404909(10)_ES_OUTSHEETS-004-SUS.dwg

LENOX TOWNSHIP



LAND USE	43	14	43	11	43	21	5	43	41	25					
SOIL TYPE				Wc2		Wc2	Wb2	Wc2	Mb2	Wc2	BbD	Wsb	BbD2	LsD	MgB
E & S DETAIL OR E & S DETAIL GROUP															



AVERAGE % SLOPE	3%	7%	3%	2%	4%	5%	1%	8%	18%	3%	0%	7%	9%	5%	21%	7%	3%	29%	7%	9%	2%
-----------------	----	----	----	----	----	----	----	----	-----	----	----	----	----	----	-----	----	----	-----	----	----	----

WATERBAR SPACING		TRENCH PLUG SPACING	
SLOPE (%)	SPACING (FT)	SLOPE (%)	SPACING (FT)
<5	200	<5	1000
5-15	150	5-15	500
15-30	100	>15-25	300
>30	50	25-35	200
		35-100	100

THE LOCATIONS OF TRENCH PLUGS HAVE BEEN SHOWN ON THE PROFILE ONLY.
 AT A MINIMUM, WATERBARS SHALL BE LOCATED WITHIN 50 FT OF THE EDGES OF WETLANDS AND WATERBODIES AND TRENCH PLUGS SHALL BE LOCATED AT THE PHYSICAL EDGES OF ALL WETLANDS AND WATERBODIES.
 THE DIRECTION OF THE ARROW IN THE WATERBAR SYMBOL REPRESENTS THE DIRECTION OF FLOW OF THE WATER INTERCEPTED BY THE WATERBAR IN PLAN VIEW. THE WATERBAR SHALL BE INSTALLED AT A MAXIMUM 2% SLOPE IN THE DIRECTION OF THE ARROW.
 * SOILS IDENTIFIED BY NRCS AS ACID-PRODUCING WITH A pH LESS THAN 4.0.
 ** POTENTIALLY SIGNIFICANT ACID-PRODUCING BEDROCK IDENTIFIED BY PADEP, PAGES AND PA DCMR.

WATERSHED ABBREVIATIONS

WVF - WARM WATER FISHES
 CWF - COLD WATER FISHES
 MF - MIGRATORY FISHES
 TSF - TROUT STOCKING
 HQ - HIGH QUALITY WATERS
 EV - EXCEPTIONAL VALUE WATER

EROSION CONTROL LEGEND

PERMANENT TRENCH PLUG
 EXCAVATED DIVERSION SWALE
 FILTER SOCK DIVERSION SWALE
 TEMPORARY DIVERSION SWALE ID
 12" SEDIMENT BARRIER
 18" SEDIMENT BARRIER
 24" SEDIMENT BARRIER
 32" SEDIMENT BARRIER
 RIP RAP APRON AT EXCAVATED DIVERSION SWALE OR FILTER SOCK DIVERSION SWALE DISCHARGING TO WATERBODY

WATERBARS (SEE NOTE 4)
 PERMANENT TRENCH PLUG
 EXCAVATED DIVERSION SWALE
 FILTER SOCK DIVERSION SWALE
 TEMPORARY DIVERSION SWALE ID
 12" SEDIMENT BARRIER
 18" SEDIMENT BARRIER
 24" SEDIMENT BARRIER
 32" SEDIMENT BARRIER
 RIP RAP APRON AT EXCAVATED DIVERSION SWALE OR FILTER SOCK DIVERSION SWALE DISCHARGING TO WATERBODY

E & S DETAIL GROUP LEGEND FOR PIPELINE CROSSINGS

TYPICAL WATERSHED

WETLANDS: (W) (MAT) (WCC) (S) (BEC) (CD) (DPX) (FX) (HDD) (MNC) (RSS) (SBR) (WBL) (PWB)

WATERBODIES: (S) (BEC) (CD) (DPX) (FX) (HDD) (MNC) (RSS) (SBR) (WBL) (PWB)

WETLAND/WATERBODIES: (W) (MAT) (WCC) (S) (BEC) (CD) (DPX) (FX) (HDD) (MNC) (RSS) (SBR) (WBL) (PWB)

RAILROADS: (RR) (CCE) (RX.1) (PWB) (RX.2)

ROADS: (R) (CCE) (RX.1) (PWB) (RX.2)

SPECIAL PROTECTION WATERSHED

WETLANDS: (W) (MAT) (WCC) (S) (BEC) (CD) (DPX) (FX) (HDD) (MNC) (RSS) (SBR) (WBL) (PWB)

WATERBODIES: (S) (BEC) (CD) (DPX) (FX) (HDD) (MNC) (RSS) (SBR) (WBL) (PWB)

WETLAND/WATERBODIES: (W) (MAT) (WCC) (S) (BEC) (CD) (DPX) (FX) (HDD) (MNC) (RSS) (SBR) (WBL) (PWB)

RAILROADS: (RR) (CCE) (RX.1) (PWB) (RX.2)

ROADS: (R) (CCE) (RX.1) (PWB) (RX.2)

GENERAL NOTES

- THE E&S DETAIL NUMBERS NOTED ABOVE AND IN THE E&S DETAIL GROUP LEGEND CORRESPOND TO SPECIFIC DETAILS THAT ARE COMPRISED OF PADEP APPROVED BEST MANAGEMENT PRACTICES (BMP) AND SUPPLEMENTAL CONSTRUCTION DETAILS TO BE FOLLOWED AND/OR INSTALLED DURING CONSTRUCTION OF THE PIPELINE.
- SOILS LEGEND PROVIDED IN THE SOIL EROSION AND SEDIMENT CONTROL NARRATIVE.
- A SUMP SHALL BE INSTALLED AT THE END OF EACH WATERBAR IN HIGH QUALITY/EXCEPTIONAL VALUE WATERSHEDS AND WITHIN 100' OF STREAMS AND WETLANDS. IN ALL OTHER AREAS A WEIGHTED SEDIMENT FILTER TUBE SHALL BE USED. REFER TO THE BEST MANAGEMENT PRACTICES AND QUANTITIES PLAN SET FOR INSTALLATION.
- WATERBODIES WITHOUT A FEMA-ESTABLISHED FLOODPLAIN, THE FLOODWAY IS COINCIDENT WITH A 50-FT OFFSET MEASURED LATEROALLY FROM THE PHYSICAL WATERBODY TOP OF BANK.
- CONTRACTOR TO SEGREGATE TOPSOILS IN ALL AGRICULTURAL, RESIDENTIAL AND WETLAND USE AREAS. THE EXISTING SUBGRADE SHALL BE SCARIFIED PRIOR TO TOPSOIL PLACEMENT IN ALL AREAS.
- REFER TO ACID PRODUCING SOILS AND BEDROCK CONTROL PLANS FOR MITIGATION MEASURES OF SOILS WITH A pH BELOW 4.0.
- PROPOSED CLEAN WATER CROSSING SHOWN HEREIN ARE TEMPORARY STORMWATER RUNOFF CONVEYANCE BMPs ASSOCIATED WITH THE CHAPTER 102 ESCOP-2 APPLICATION. NO FLOWS FROM REGULATED WATERWAYS ARE INTENDED TO BE CONVEYED WITHIN THESE BMPs.
- DURING THE CONSTRUCTION PHASE, IF SHALLOW BEDROCK IS PRESENT, THEN THE PIPELINE WILL BE INSTALLED THROUGH THE WATERBODY WITH A MINIMUM OF 2 FOOT OF COVER, AS THE REQUIRED 5 FOOT OF MINIMUM COVER WILL NOT BE FEASIBLE.
- EROSION CONTROL BLANKETS SHALL BE INSTALLED ON SLOPES 3:1 OR GREATER.

REVISIONS

NO.	DATE	BY	DESCRIPTION	W.O. NO.	CHK.	APP.
0	08/28/2015	BL	ISSUED FOR PADEP SUBMITTAL	W01161481	BLK	AJB
1	12/02/2015	BL	ISSUED FOR PADEP RESUBMITTAL	W01161481	BLK	AJB
2	Oct. 2016	BL	PADEP TECHNICAL DEFICIENCY RESPONSE #1	W01161481	BLK	AJB

LAND USE LEGEND

5 - OPEN WATER	41 - DECIDUOUS FOREST LAND
11 - RESIDENTIAL	42 - EVERGREEN FOREST LAND
14 - TRANSPORTATION, UTILITY, AND COMMUNICATIONS	44 - MIXED FOREST LAND
15 - INDUSTRIAL AND COMMERCIAL	44 - FORESTED/CULTIVATED TIMBER OR FOREST LAND
21 - CROPLAND AND PASTURE	55 - RIVERS
22 - ORCHARDS, GROVES, VINEYARDS, NURSERIES	74 - BARE EXPOSED ROCK
25 - HAY FIELDS	75 - STRIP MINES, QUARRIES, AND GRAVEL
32 - SHRUB AND BRUSH RANGELAND	99 - HERBACEOUS OPENINGS

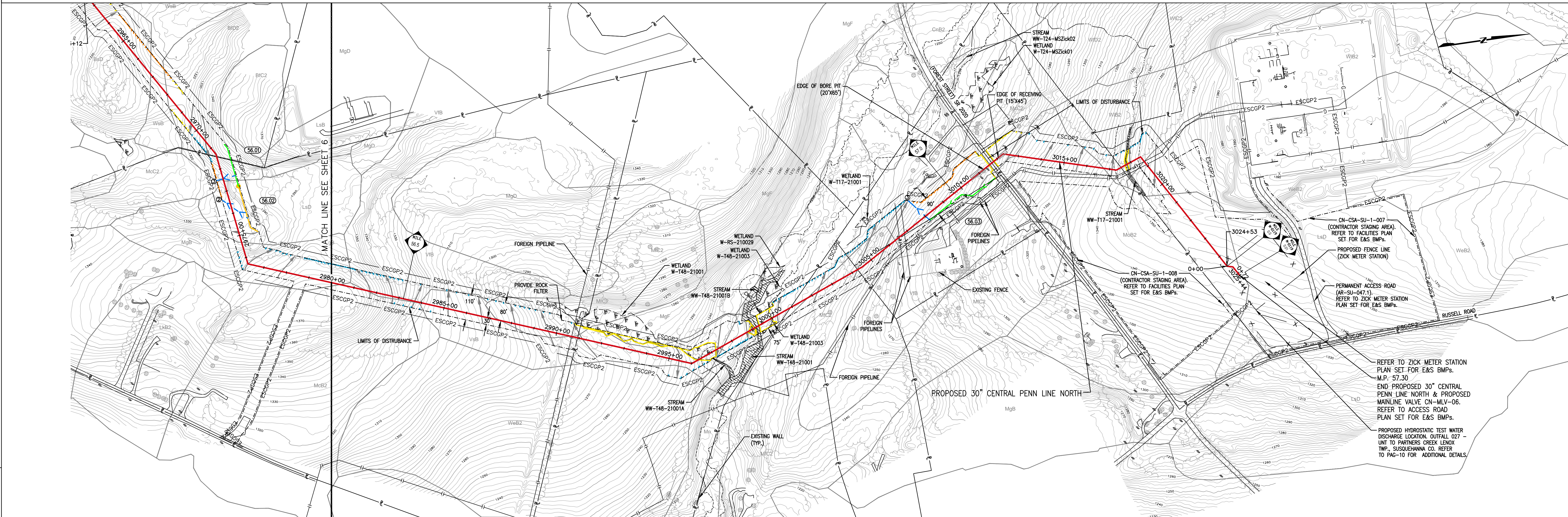
TRANSCONTINENTAL GAS PIPE LINE COMPANY, LLC
 SOIL EROSION & SEDIMENT CONTROL PLAN / SITE RESTORATION PLAN
 ATLANTIC SUNRISE PROJECT
 PROPOSED 30" CENTRAL PENN LINE NORTH
 M.P. 55.68 TO M.P. 56.44
 SUSQUEHANNA COUNTY, PENNSYLVANIA

Drawn By: JMD Date: 11/2014
 Checked By: BDJ Date: 03/13/2015
 Approved By: AJB Date: 03/13/2015

Scale: AS NOTED
 Revision: 2
 Drawing Number: 24-1601-70-28-A/1683_3
 Sheet: 6 OF 7

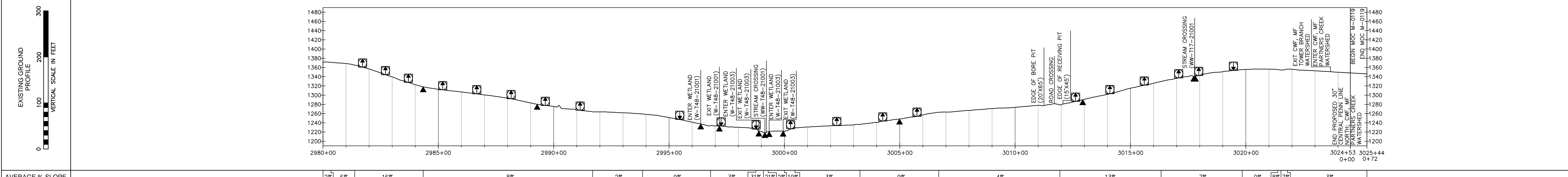
Drawn By: JMD Date: 11/2014
 Checked By: BDJ Date: 03/13/2015
 Approved By: AJB Date: 03/13/2015
 Drawing Number: 24-1601-70-28-A/1683_3
 Sheet: 6 OF 7

LENOX TOWNSHIP



REFER TO ZICK METER STATION PLAN SET FOR E&S BMPs. M.P. 57.30
 END PROPOSED 30" CENTRAL PENN LINE NORTH & PROPOSED MAINLINE VALVE CN-MLV-06. REFER TO ACCESS ROAD PLAN SET FOR E&S BMPs.
 PROPOSED HYDROSTATIC TEST WATER DISCHARGE LOCATION. OUTFALL 027 - UNIT TO PARTNERS CREEK LENOX TWP., SUSQUEHANNA CO. REFER TO PAG-10 FOR ADDITIONAL DETAILS.

LAND USE		25	41	25	41	21	42	5	42	5	99	5	42	32	43	32	11	14	21	5	21	
SOIL TYPE		MgB	McB2	VtB	VsB	MIC2	VsB		Wy		MIC2		McC2		MoB2	WIB2	WeB2	MoB2				
E & S DETAIL OR E & S DETAIL GROUP																						



AVERAGE % SLOPE		2%	6%	16%	8%	2%	9%	3%	31%	21%	2%	19%	3%	9%	4%	13%	7%	0%	8%	7%	3%
-----------------	--	----	----	-----	----	----	----	----	-----	-----	----	-----	----	----	----	-----	----	----	----	----	----

EROSION CONTROL LEGEND

WATERBAR SPACING	TRENCH PLUG SPACING	WATERBARS (SEE NOTE 4)
SLOPE (%) SPACING (FT)	SLOPE (%) SPACING (FT)	
<5 200	<5 1000	PERMANENT TRENCH PLUG
5-15 150	5-15 500	EXCAVATED DIVERSION SWALE
>15-25 100	>15-25 300	FILTER SOCK DIVERSION SWALE
>25-30 75	>25-30 200	TEMPORARY DIVERSION SWALE ID (100.4)
>30 50	35-100 100	12" SEDIMENT BARRIER
		18" SEDIMENT BARRIER
		24" SEDIMENT BARRIER
		32" SEDIMENT BARRIER
		RIP RAP APRON AT EXCAVATED DIVERSION SWALE OR FILTER SOCK DIVERSION SWALE DISCHARGING TO WATERBODY

THE LOCATIONS OF TRENCH PLUGS HAVE BEEN SHOWN ON THE PROFILE ONLY.
 AT A MINIMUM, WATERBARS SHALL BE LOCATED WITHIN 50 FT OF THE EDGES OF WETLANDS AND WATERBODIES AND TRENCH PLUGS SHALL BE LOCATED AT THE PHYSICAL EDGES OF ALL WETLANDS AND WATERBODIES.
 THE DIRECTION OF THE ARROW IN THE WATERBAR SYMBOL REPRESENTS THE DIRECTION OF FLOW OF THE WATER INTERCEPTED BY THE WATERBAR IN PLAN VIEW. THE WATERBAR SHALL BE INSTALLED AT A MAXIMUM 2% SLOPE IN THE DIRECTION OF THE ARROW.
 * SOILS IDENTIFIED BY NRCS AS ACID-PRODUCING WITH A pH LESS THAN 4.0.
 ** POTENTIALLY SIGNIFICANT ACID-PRODUCING BEDROCK IDENTIFIED BY PADEP, PAOS AND PA DCMR.

WATERSHED ABBREVIATIONS
 WWF - WARM WATER FISHES
 CWF - COLD WATER FISHES
 MF - MIGRATORY FISHES
 TSF - TROUT STOCKING
 HQ - HIGH QUALITY WATERS
 EV - EXCEPTIONAL VALUE WATER

E & S DETAIL GROUP LEGEND FOR PIPELINE CROSSINGS

WETLANDS	WATERBODIES	WETLAND/WATERBODIES	RAILROADS
W (MAT), WEC, WEC2, WEC3, WEC4, WEC5, WEC6, WEC7, WEC8, WEC9, WEC10, WEC11, WEC12, WEC13, WEC14, WEC15, WEC16, WEC17, WEC18, WEC19, WEC20, WEC21, WEC22, WEC23, WEC24, WEC25, WEC26, WEC27, WEC28, WEC29, WEC30, WEC31, WEC32, WEC33, WEC34, WEC35, WEC36, WEC37, WEC38, WEC39, WEC40, WEC41, WEC42, WEC43, WEC44, WEC45, WEC46, WEC47, WEC48, WEC49, WEC50, WEC51, WEC52, WEC53, WEC54, WEC55, WEC56, WEC57, WEC58, WEC59, WEC60, WEC61, WEC62, WEC63, WEC64, WEC65, WEC66, WEC67, WEC68, WEC69, WEC70, WEC71, WEC72, WEC73, WEC74, WEC75, WEC76, WEC77, WEC78, WEC79, WEC80, WEC81, WEC82, WEC83, WEC84, WEC85, WEC86, WEC87, WEC88, WEC89, WEC90, WEC91, WEC92, WEC93, WEC94, WEC95, WEC96, WEC97, WEC98, WEC99, WEC100	S (BEC), CD, DFX, FX, HD, HND, HMC, HSS, MAT, MNC, MRS, SBR, SBL, SBR2, SBR3, SBR4, SBR5, SBR6, SBR7, SBR8, SBR9, SBR10, SBR11, SBR12, SBR13, SBR14, SBR15, SBR16, SBR17, SBR18, SBR19, SBR20, SBR21, SBR22, SBR23, SBR24, SBR25, SBR26, SBR27, SBR28, SBR29, SBR30, SBR31, SBR32, SBR33, SBR34, SBR35, SBR36, SBR37, SBR38, SBR39, SBR40, SBR41, SBR42, SBR43, SBR44, SBR45, SBR46, SBR47, SBR48, SBR49, SBR50, SBR51, SBR52, SBR53, SBR54, SBR55, SBR56, SBR57, SBR58, SBR59, SBR60, SBR61, SBR62, SBR63, SBR64, SBR65, SBR66, SBR67, SBR68, SBR69, SBR70, SBR71, SBR72, SBR73, SBR74, SBR75, SBR76, SBR77, SBR78, SBR79, SBR80, SBR81, SBR82, SBR83, SBR84, SBR85, SBR86, SBR87, SBR88, SBR89, SBR90, SBR91, SBR92, SBR93, SBR94, SBR95, SBR96, SBR97, SBR98, SBR99, SBR100	W (MAT), WEC, WEC2, WEC3, WEC4, WEC5, WEC6, WEC7, WEC8, WEC9, WEC10, WEC11, WEC12, WEC13, WEC14, WEC15, WEC16, WEC17, WEC18, WEC19, WEC20, WEC21, WEC22, WEC23, WEC24, WEC25, WEC26, WEC27, WEC28, WEC29, WEC30, WEC31, WEC32, WEC33, WEC34, WEC35, WEC36, WEC37, WEC38, WEC39, WEC40, WEC41, WEC42, WEC43, WEC44, WEC45, WEC46, WEC47, WEC48, WEC49, WEC50, WEC51, WEC52, WEC53, WEC54, WEC55, WEC56, WEC57, WEC58, WEC59, WEC60, WEC61, WEC62, WEC63, WEC64, WEC65, WEC66, WEC67, WEC68, WEC69, WEC70, WEC71, WEC72, WEC73, WEC74, WEC75, WEC76, WEC77, WEC78, WEC79, WEC80, WEC81, WEC82, WEC83, WEC84, WEC85, WEC86, WEC87, WEC88, WEC89, WEC90, WEC91, WEC92, WEC93, WEC94, WEC95, WEC96, WEC97, WEC98, WEC99, WEC100	RR (RCE), RCE2, RCE3, RCE4, RCE5, RCE6, RCE7, RCE8, RCE9, RCE10, RCE11, RCE12, RCE13, RCE14, RCE15, RCE16, RCE17, RCE18, RCE19, RCE20, RCE21, RCE22, RCE23, RCE24, RCE25, RCE26, RCE27, RCE28, RCE29, RCE30, RCE31, RCE32, RCE33, RCE34, RCE35, RCE36, RCE37, RCE38, RCE39, RCE40, RCE41, RCE42, RCE43, RCE44, RCE45, RCE46, RCE47, RCE48, RCE49, RCE50, RCE51, RCE52, RCE53, RCE54, RCE55, RCE56, RCE57, RCE58, RCE59, RCE60, RCE61, RCE62, RCE63, RCE64, RCE65, RCE66, RCE67, RCE68, RCE69, RCE70, RCE71, RCE72, RCE73, RCE74, RCE75, RCE76, RCE77, RCE78, RCE79, RCE80, RCE81, RCE82, RCE83, RCE84, RCE85, RCE86, RCE87, RCE88, RCE89, RCE90, RCE91, RCE92, RCE93, RCE94, RCE95, RCE96, RCE97, RCE98, RCE99, RCE100

TYPICAL WATERSHED

GENERAL E&S FIGURES
 CFS, CWC, DS, ECB, FD, FTS, MAT, MNC, MRS, PWB, RAF, RAD, RFD, S, SBR, SBL, TD, TP, TS.1, TS.2, TS.3, TTS, VCH, WB, WB.1, WB.2, WB.3, R2F

SPECIAL PROTECTION WATERSHED

WETLANDS: W (MAT), WEC, WEC2, WEC3, WEC4, WEC5, WEC6, WEC7, WEC8, WEC9, WEC10, WEC11, WEC12, WEC13, WEC14, WEC15, WEC16, WEC17, WEC18, WEC19, WEC20, WEC21, WEC22, WEC23, WEC24, WEC25, WEC26, WEC27, WEC28, WEC29, WEC30, WEC31, WEC32, WEC33, WEC34, WEC35, WEC36, WEC37, WEC38, WEC39, WEC40, WEC41, WEC42, WEC43, WEC44, WEC45, WEC46, WEC47, WEC48, WEC49, WEC50, WEC51, WEC52, WEC53, WEC54, WEC55, WEC56, WEC57, WEC58, WEC59, WEC60, WEC61, WEC62, WEC63, WEC64, WEC65, WEC66, WEC67, WEC68, WEC69, WEC70, WEC71, WEC72, WEC73, WEC74, WEC75, WEC76, WEC77, WEC78, WEC79, WEC80, WEC81, WEC82, WEC83, WEC84, WEC85, WEC86, WEC87, WEC88, WEC89, WEC90, WEC91, WEC92, WEC93, WEC94, WEC95, WEC96, WEC97, WEC98, WEC99, WEC100
 WATERBODIES: S (BEC), CD, DFX, FX, HD, HND, HMC, HSS, MAT, MNC, MRS, SBR, SBL, SBR2, SBR3, SBR4, SBR5, SBR6, SBR7, SBR8, SBR9, SBR10, SBR11, SBR12, SBR13, SBR14, SBR15, SBR16, SBR17, SBR18, SBR19, SBR20, SBR21, SBR22, SBR23, SBR24, SBR25, SBR26, SBR27, SBR28, SBR29, SBR30, SBR31, SBR32, SBR33, SBR34, SBR35, SBR36, SBR37, SBR38, SBR39, SBR40, SBR41, SBR42, SBR43, SBR44, SBR45, SBR46, SBR47, SBR48, SBR49, SBR50, SBR51, SBR52, SBR53, SBR54, SBR55, SBR56, SBR57, SBR58, SBR59, SBR60, SBR61, SBR62, SBR63, SBR64, SBR65, SBR66, SBR67, SBR68, SBR69, SBR70, SBR71, SBR72, SBR73, SBR74, SBR75, SBR76, SBR77, SBR78, SBR79, SBR80, SBR81, SBR82, SBR83, SBR84, SBR85, SBR86, SBR87, SBR88, SBR89, SBR90, SBR91, SBR92, SBR93, SBR94, SBR95, SBR96, SBR97, SBR98, SBR99, SBR100
 WETLAND/WATERBODIES: W (MAT), WEC, WEC2, WEC3, WEC4, WEC5, WEC6, WEC7, WEC8, WEC9, WEC10, WEC11, WEC12, WEC13, WEC14, WEC15, WEC16, WEC17, WEC18, WEC19, WEC20, WEC21, WEC22, WEC23, WEC24, WEC25, WEC26, WEC27, WEC28, WEC29, WEC30, WEC31, WEC32, WEC33, WEC34, WEC35, WEC36, WEC37, WEC38, WEC39, WEC40, WEC41, WEC42, WEC43, WEC44, WEC45, WEC46, WEC47, WEC48, WEC49, WEC50, WEC51, WEC52, WEC53, WEC54, WEC55, WEC56, WEC57, WEC58, WEC59, WEC60, WEC61, WEC62, WEC63, WEC64, WEC65, WEC66, WEC67, WEC68, WEC69, WEC70, WEC71, WEC72, WEC73, WEC74, WEC75, WEC76, WEC77, WEC78, WEC79, WEC80, WEC81, WEC82, WEC83, WEC84, WEC85, WEC86, WEC87, WEC88, WEC89, WEC90, WEC91, WEC92, WEC93, WEC94, WEC95, WEC96, WEC97, WEC98, WEC99, WEC100
 RAILROADS: RR (RCE), RCE2, RCE3, RCE4, RCE5, RCE6, RCE7, RCE8, RCE9, RCE10, RCE11, RCE12, RCE13, RCE14, RCE15, RCE16, RCE17, RCE18, RCE19, RCE20, RCE21, RCE22, RCE23, RCE24, RCE25, RCE26, RCE27, RCE28, RCE29, RCE30, RCE31, RCE32, RCE33, RCE34, RCE35, RCE36, RCE37, RCE38, RCE39, RCE40, RCE41, RCE42, RCE43, RCE44, RCE45, RCE46, RCE47, RCE48, RCE49, RCE50, RCE51, RCE52, RCE53, RCE54, RCE55, RCE56, RCE57, RCE58, RCE59, RCE60, RCE61, RCE62, RCE63, RCE64, RCE65, RCE66, RCE67, RCE68, RCE69, RCE70, RCE71, RCE72, RCE73, RCE74, RCE75, RCE76, RCE77, RCE78, RCE79, RCE80, RCE81, RCE82, RCE83, RCE84, RCE85, RCE86, RCE87, RCE88, RCE89, RCE90, RCE91, RCE92, RCE93, RCE94, RCE95, RCE96, RCE97, RCE98, RCE99, RCE100

BMP NOTES:
 1. DETAILS IN THIS LEGEND ARE NOT COMPREHENSIVE AND ONLY REFER TO BMPs RELATED TO PIPELINE CROSSINGS. ADDITIONAL BMPs ARE PROVIDED FOR ACCESS ROADS & FACILITIES.
 2. REFER TO BEST MANAGEMENT AND QUANTITIES PLAN SET FOR DESIGN, NOTES AND DETAILS.
 3. REFER TO CLEAN WATER CROSSING (CWC) DETAIL IN THE BEST MANAGEMENT AND QUANTITIES PLAN SET FOR SLOPE RANGES.
 4. THE APPROX. LOCATION AND TYPE OF SEDIMENT BARRIERS TO BE INSTALLED ALONG THE CONSTRUCTION WORKSPACE ARE LOCATED IN TABLES IN THE BEST MANAGEMENT PRACTICES AND QUANTITIES PLAN SET.

GENERAL NOTES

- THE E&S DETAIL NUMBERS NOTED ABOVE AND IN THE E&S DETAIL GROUP LEGEND CORRESPOND TO SPECIFIC DETAILS THAT ARE COMPRISED OF PADEP APPROVED BEST MANAGEMENT PRACTICES (BMP) AND SUPPLEMENTAL CONSTRUCTION DETAILS TO BE FOLLOWED AND/OR INSTALLED DURING CONSTRUCTION OF THE PIPELINE.
- SOILS LEGEND PROVIDED IN THE SOIL EROSION AND SEDIMENT CONTROL NARRATIVE.
- A SUMP SHALL BE INSTALLED AT THE END OF EACH WATERBAR IN HIGH QUALITY/EXCEPTIONAL VALUE WATERSHEDS AND WITHIN 100' OF STREAMS AND WETLANDS. IN ALL OTHER AREAS A WEIGHTED SEDIMENT FILTER TUBE SHALL BE USED. REFER TO THE BEST MANAGEMENT PRACTICES AND QUANTITIES PLAN SET FOR INSTALLATION.
- WATERSHEDS WITHOUT A FEMA-ESTABLISHED FLOODPLAIN, THE FLOODWAY IS COINCIDENT WITH A 50-FT OFFSET MEASURED LATERSL FROM THE PHYSICAL WATERBODY TOP OF BANK.
- CONTRACTOR TO SEGREGATE TOPSOILS IN ALL AGRICULTURAL, RESIDENTIAL AND WETLAND USE AREAS. THE EXISTING SUBGRADE SHALL BE SCARIFIED PRIOR TO TOPSOIL PLACEMENT IN ALL AREAS.
- REFER TO ACID PRODUCING SOILS AND BEDROCK CONTROL PLANS FOR MITIGATION MEASURES OF SOILS WITH A pH BELOW 4.0.
- PROPOSED CLEAN WATER CROSSING SHOWN HEREIN ARE TEMPORARY STORMWATER RUNOFF CONVEYANCE BMPs ASSOCIATED WITH THE CHAPTER 102 ESCOP-2 APPLICATION. NO FLOWS FROM REGULATED WATERWAYS ARE INTENDED TO BE CONVEYED WITHIN THESE BMPs.
- DURING THE CONSTRUCTION PHASE, IF SHALLOW BEDROCK IS PRESENT, THEN THE PIPELINE WILL BE INSTALLED THROUGH THE WATERBODY WITH A MINIMUM OF 2 FOOT OF COVER, AS THE REQUIRED 5 FOOT OF MINIMUM COVER WILL NOT BE FEASIBLE.
- EROSION CONTROL BLANKETS SHALL BE INSTALLED ON SLOPES 3:1 OR GREATER.

LAND USE LEGEND

5 - OPEN WATER	41 - DECIDUOUS FOREST LAND
11 - RESIDENTIAL	42 - EVERGREEN FOREST LAND
15 - TRANSPORTATION, UTILITY, AND COMMUNICATIONS	43 - MIXED FOREST LAND
14 - INDUSTRIAL AND COMMERCIAL OR FOREST LAND	44 - FORESTED/CULTIVATED TIMBER
21 - CROPLAND AND PASTURE	55 - RIVERS
22 - ORCHARDS, GROVES, VINEYARDS, NURSERIES	74 - BARE EXPOSED ROCK
25 - HAY FIELDS	75 - STRIP MINES, QUARRIES, AND GRAVEL
32 - SHRUB AND BRUSH RANGELAND	99 - HERBACEOUS OPENINGS

REVISIONS

NO.	DATE	BY	DESCRIPTION	W.D. NO.	CHK.	APP.
0	08/28/2015	BL	ISSUED FOR PADEP SUBMITTAL	W01161481	BLK	A.B.
1	12/02/2015	BL	ISSUED FOR PADEP RESUBMITTAL	W01161481	BLK	A.B.
2	Oct. 2016	BL	PADEP TECHNICAL DEFICIENCY RESPONSE #1	W01161481	BLK	A.B.

TRANSCONTINENTAL GAS PIPE LINE COMPANY, LLC
 SOIL EROSION & SEDIMENT CONTROL PLAN / SITE RESTORATION PLAN
 ATLANTIC SUNRISE PROJECT
 PROPOSED 30" CENTRAL PENN LINE NORTH
 M.P. 56.44 TO M.P. 57.30
 SUSQUEHANNA COUNTY, PENNSYLVANIA

WILLIAMS

DRAWN BY: JMD DATE: 11/2014 ISSUED FOR BID: SCALE: AS NOTED
 CHECKED BY: BDK DATE: 03/13/2015 ISSUED FOR CONSTRUCTION: REVISION: 2
 APPROVED BY: A.B. DATE: 03/13/2015 DRAWING NUMBER: 24-1601-70-28-A/1683_3 SHEET 7
 W.D. W01161481 OF 7

Drawing Location & Name: G:\030814\140\140909\010-CP\PLAN_PL_P1404909(10)_ES_OUTSHEETS-004-SUS.dwg
 Drawn By & Date: cesterw Nov 11, 2016 2:14pm
 Drawing Location & Name: G:\030814\140\140909\010-CP\PLAN_PL_P1404909(10)_ES_OUTSHEETS-004-SUS.dwg

Drawn By & Date/Time: contonuser Nov 11, 2016 - 11:54am
Drawing Location & Name: G:\05514\14C\14C4909\DWG\010-CPLN\CY_PCSM14C4909(10)_CSA-SU-1-007.dwg

RECEIVING WATERCOURSE - CHAPTER 93 DESIGNATION

THE RECEIVING WATERCOURSE IS TO TOWER BRANCH TO TUNKHANNOCK CREEK, DESIGNATED AS CWF.

SITE SOIL TYPES

MoB2	MORRIS CHANNERY SILT LOAM, 3 TO 8 PERCENT SLOPES
WeB2	WELLSBORO CHANNERY SILT LOAM, 3 TO 8 PERCENT SLOPES
LsD	LORDSTOWN AND OJUGA VERY STONY SILT LOAM, 12 TO 30 PERCENT SLOPES

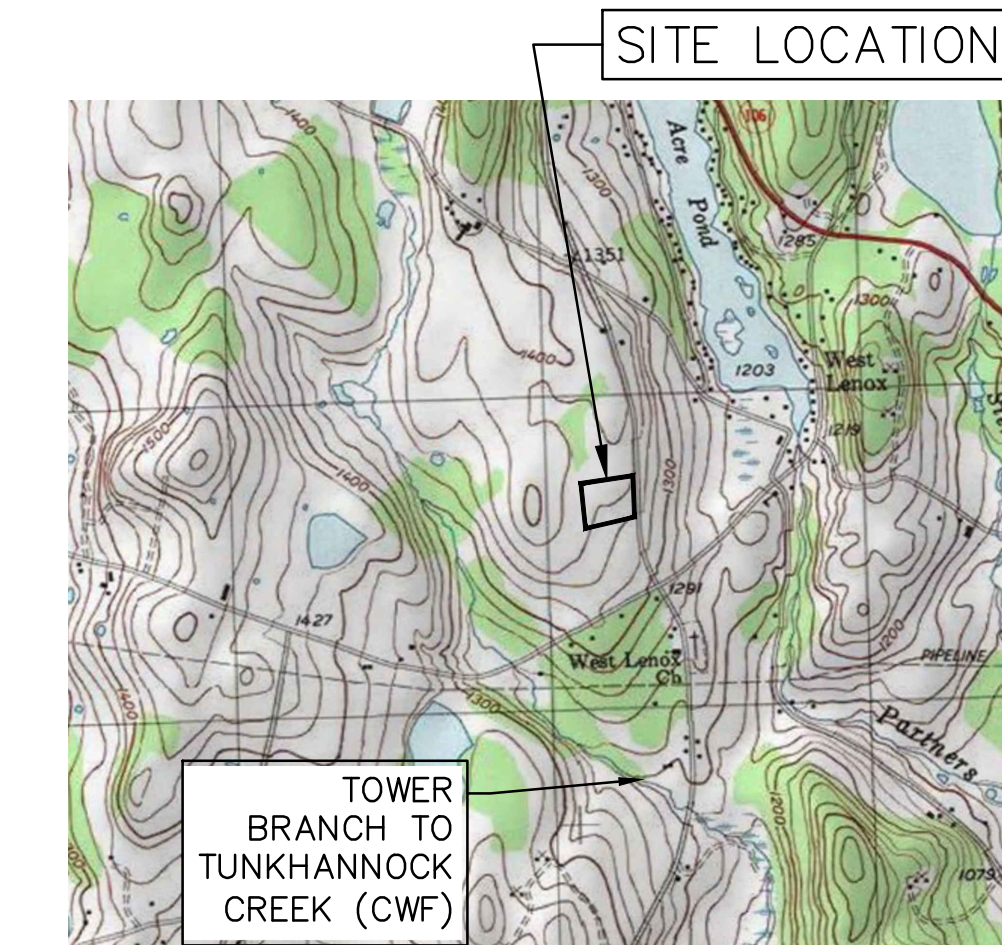
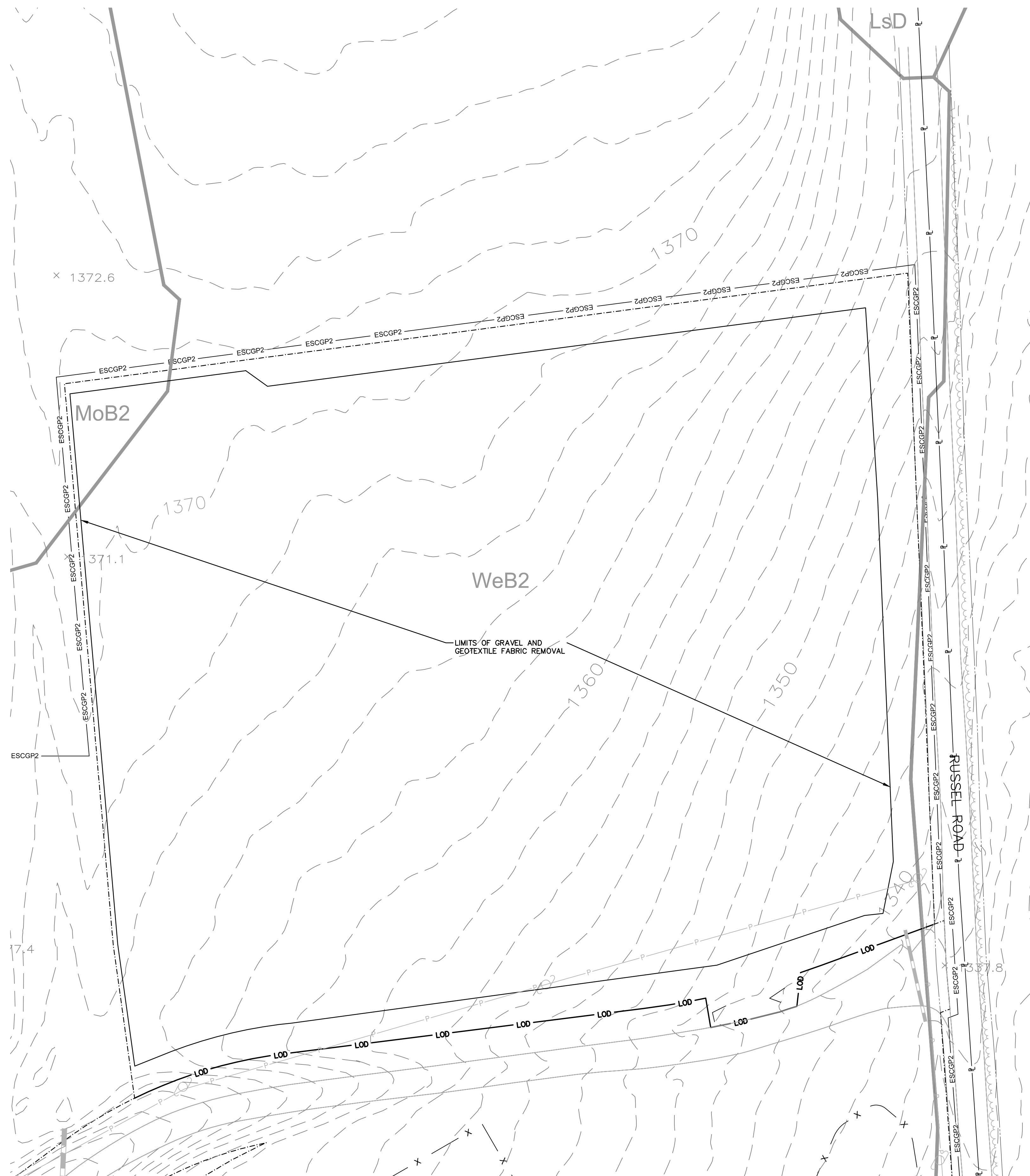
ESCGP-2 PERMIT TABLE

LIMIT OF PERMIT BOUNDARY/SITE AREA FOR CN-CSA-SU-1-007	INCLUDED IN OVERALL PERMIT AREA
LIMIT OF DISTURBANCE	5.70 AC.
AREA OF PROTECTED /SENSITIVE VALUE FEATURES	0.00 AC.
AREA OF RIPARIAN FOREST BUFFER PROTECTION	0.00 AC.
AREA OF MINIMUM DISTURBANCE/REDUCED GRADING	0.00 AC.
IMPERVIOUS AREA*	0.00 AC.
IMPERVIOUS AREA CONTROLLED BY BMPS*	0.00 AC.

*CONTRACTOR STAGING AREA IS A TEMPORARY FACILITY AND WILL BE RESTORED TO PRE-CONSTRUCTION GRADES AND DRAINAGE PATTERNS IN A VEGETATED CONDITION AT THE COMPLETION OF CONSTRUCTION

NOTE: SITE TO BE STABILIZED WITH GRAVEL SURFACE DURING SITE OPERATIONS. SEDIMENT CONTROL DEVICES ARE TO REMAIN IN PLACE AND FUNCTIONAL UNTIL COMPLETION OF FINAL STABILIZATION. REFER TO EROSION AND SEDIMENT CONTROL PLAN CONSTRUCTION SEQUENCE NOTES.

RESTORE ENTIRE DISTURBED AREA TO PRE-CONSTRUCTION GRADES AND DRAINAGE PATTERNS IN A EXISTING VEGETATIVE CONDITION OR BETTER.



LOCATION MAP

USGS LENOXVILLE QUADRANGLE
SCALE: 1"=2,000'

LEGEND

EXISTING FEATURES

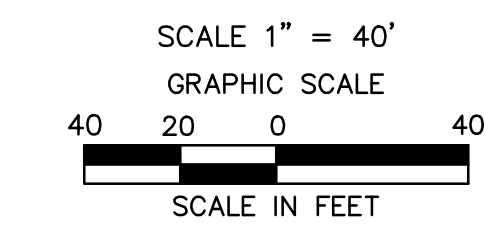
- PROPERTY BOUNDARY LINE (APPROXIMATE)
- EXISTING MAJOR CONTOUR (10' INTERVAL)
- EXISTING MINOR CONTOUR (2' INTERVAL)
- FENCE
- STONE ROW
- SOIL BOUNDARY
- TREELINE
- CENTERLINE STREAM/EDGE WATERBODY
- DELINEATED WETLANDS

- SPOT ELEVATION
- TREE OR BUSH
- UTILITY POLE AND UTILITY LINE
- GUY POLE
- GUY POLE OR ANCHOR
- POST
- SIGN
- WATER WELL
- UTILITY BOX
- MONUMENT (PROPERTY BOUNDARY MARKER)
- IRON PIPE OR PIN (PROPERTY BOUNDARY MARKER)
- SOIL TYPE DESIGNATION

WsB

PROPOSED FEATURES

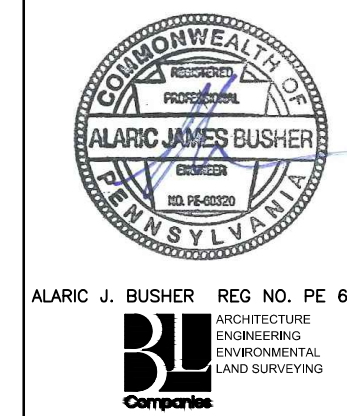
- PROPOSED PIPELINE
- LIMIT OF DISTURBANCE (CONTRACTOR STAGING AREA)
- LIMIT OF DISTURBANCE (OVERALL PIPELINE PROJECT)
- ESCGP-2 PERMIT BOUNDARY

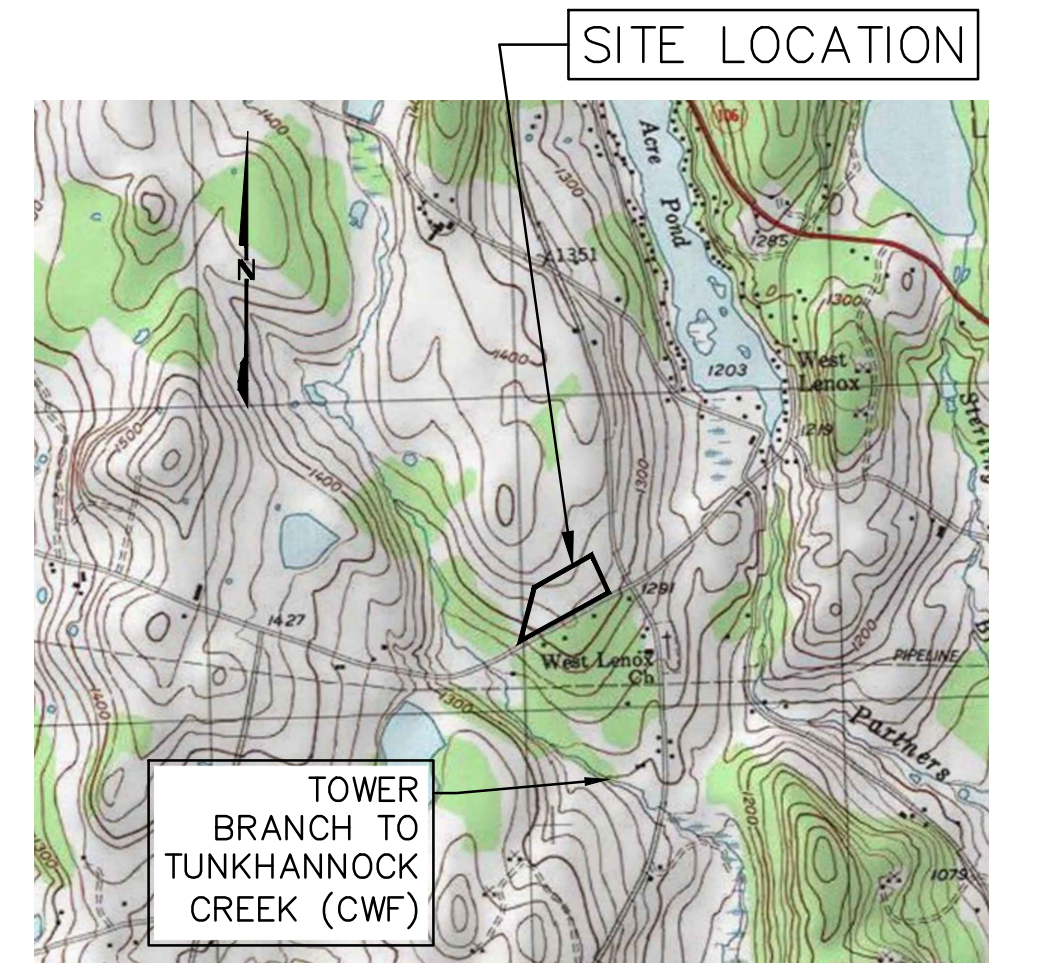
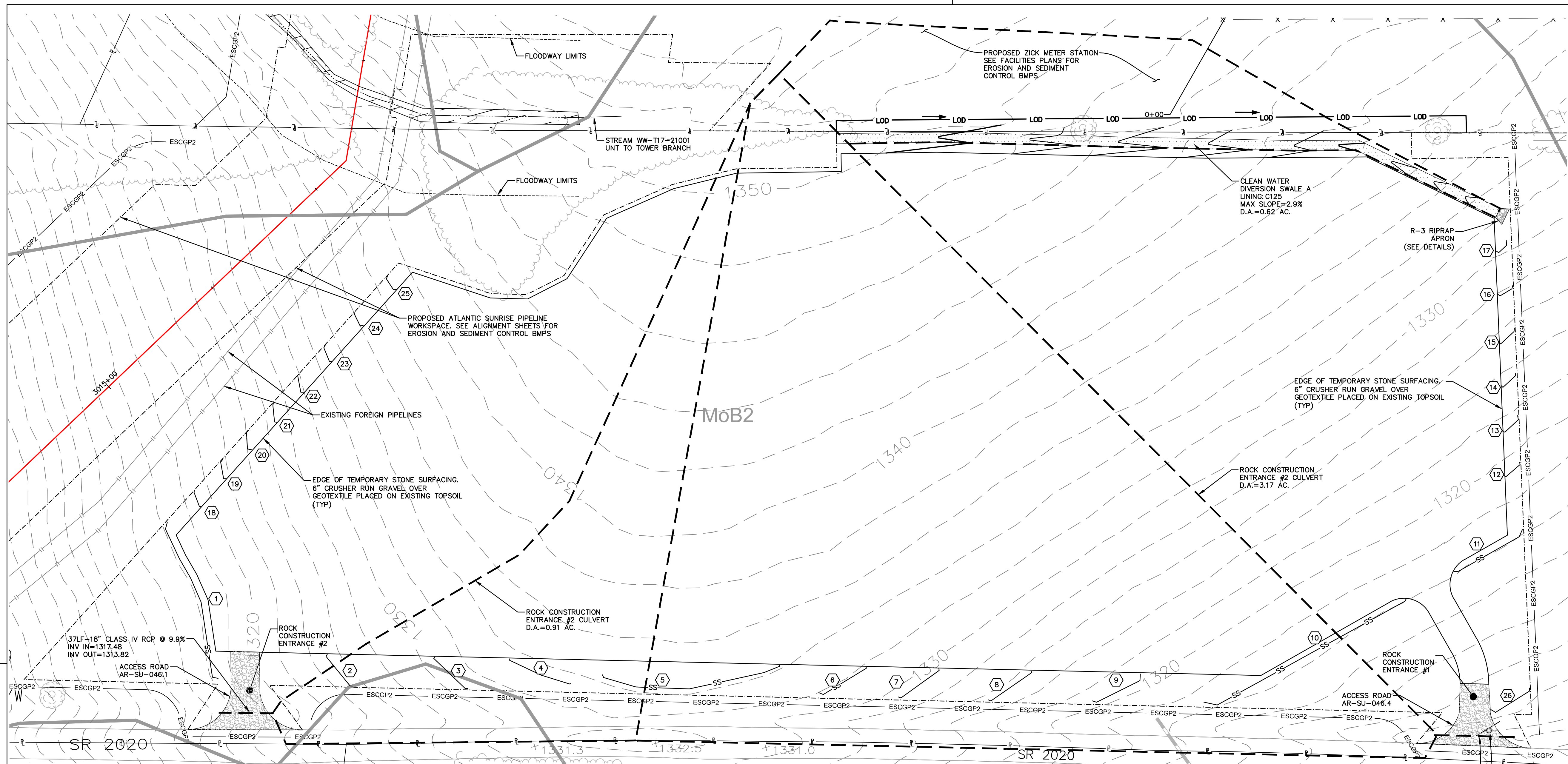


PHASE 2 CPLN CONTRACTOR STAGING AREA 7 - LENOX TOWNSHIP
CN-CSA-SU-1-007

REVISIONS			TRANSCONTINENTAL GAS PIPE LINE COMPANY, LLC ATLANTIC SUNRISE PROJECT- PROPOSED 30" NATURAL GAS PIPELINE POST CONSTRUCTION STORMWATER MANAGEMENT PLANS FOR ABOVE GROUND FACILITIES & ASSOCIATED PERMANENT ACCESS ROADS SUSQUEHANNA COUNTY, PENNSYLVANIA SITE RESTORATION PLAN		
NO.	DATE	BY	DESCRIPTION	W.O. NO.	CHK. APP.
0	08/26/2015	BL	ISSUED FOR PADEP SUBMITTAL	W01161481	SMK
1	12/02/2015	BL	ISSUED FOR PADEP RESUBMITTAL	W01161481	SMK
2	09/01/2016	BL	MODIFICATION 1 ISSUED FOR PADEP SUBMITTAL	W01161481	AJB
3	Oct. 2016	BL	PADEP TECHNICAL DEFICIENCY RESPONSE #1	W01161481	AJB

DRAWN BY:	HFT	DATE:	04/03/15	ISSUED FOR BID:	SCALE:	AS NOTED
CHECKED BY:	AJB	DATE:	04/03/15	ISSUED FOR CONSTRUCTION:	REVISION:	3
APPROVED BY:	AJB	DATE:	04/03/15	DRAWING NUMBER:	24-1601-70-28-A/1683_3	SHEET 2
W.O.:	1161481			CSA-CN-CSA-SU-1-007		OF 2





LOCATION MAP
USGS LENOXVILLE QUADRANGLE
SCALE: 1"=2,000'

LEGEND

EXISTING FEATURES	
	PROPERTY BOUNDARY LINE (APPROXIMATE)
	EXISTING MAJOR CONTOUR (10' INTERVAL)
	EXISTING MINOR CONTOUR (2' INTERVAL)
	FENCE
	STONE ROW
	SOIL BOUNDARY
	TREELINE
	CENTERLINE STREAM/EDGE WATERBODY
	DELINEATED WETLANDS
	SPOT ELEVATION
	TREE OR BUSH
	UTILITY POLE AND UTILITY LINE
	GUY POLE
	GUY POLE OR ANCHOR
	POST
	SIGN
	WATER WELL
	UTILITY BOX
	MONUMENT (PROPERTY BOUNDARY MARKER)
	IRON PIPE OR PIN (PROPERTY BOUNDARY MARKER)
	SOIL TYPE DESIGNATION

Wsb	
	PROPOSED PIPELINE
	PROPOSED TEMPORARY MAJOR CONTOUR (10' INTERVAL)
	PROPOSED TEMPORARY MINOR CONTOUR (2' INTERVAL)
	LIMIT OF DISTURBANCE (CONTRACTOR STAGING AREA)
	LIMIT OF DISTURBANCE (OVERALL PIPELINE PROJECT)
	ESCGP-2 PERMIT BOUNDARY
	SEDIMENT BARRIER
	FILTER SOCK DIVERSION
	ORANGE CONSTRUCTION FENCE
	BREAKLINE
	SWALE LINING/EROSION CONTROL BLANKET
	ROCK OUTLET/RIPRAP APRON
	PROPOSED ACCESS ROAD
	SEDIMENT BARRIER DESIGNATION
	DRAINAGE AREAS
	FLOW ARROW

EARTH DISTURBANCE ACTIVITY - PAST, PRESENT, AND FUTURE LAND USES

THE LAND USE FOUND WITHIN THE PROJECT AREA OCCURS ON PIPELINE RIGHT OF WAY AND UNDEVELOPED MEADOW. ACCORDING TO THE IMAGERY PROVIDED BY THE PENNSYLVANIA GEOLOGICAL SURVEY, THE LAND USES WITHIN THE PROJECT AREA REMAINED SIMILAR BETWEEN 1939 AND 1967. THE STAGING AREA IS TEMPORARY AND AFTER PIPELINE CONSTRUCTION IS COMPLETE AND STAGING AREA IS REMOVED AND DISTURBED AREA RETURNED TO EXISTING VEGETATIVE CONDITION, FUTURE LAND USE WILL BE RETURNED TO EXISTING USE.

RECEIVING WATERCOURSE - CHAPTER 93 DESIGNATION

THE RECEIVING WATERCOURSE IS TOWER BRANCH TO TUNKHANNOCK CREEK, DESIGNATED AS CWF.

THERMAL IMPACT ANALYSIS

TO MINIMIZE A POTENTIAL INCREASE IN STREAM TEMPERATURE, THIS SITE WILL INCORPORATE THE FOLLOWING BMP'S TO ADDRESS POTENTIAL THERMAL IMPACTS. GRAVEL WILL PRIMARILY BE USED IN LIEU OF ASPHALT FOR STAGING AND YARD AREAS TO PREVENT THE COLLECTION AND SUBSEQUENT HEATING OF STORMWATER ON THE SURFACE OF THESE AREAS. NO TREES REMOVED IS PROPOSED PART OF CONSTRUCTION. GRAVEL WILL BE USED IN LIEU OF ASPHALT SURFACES. NO TREES WILL BE REMOVED FOR CONSTRUCTION OF THIS SITE. THE NEAREST RECEIVING WATER TO THIS SITE IS APPROXIMATELY 3,200 FT FROM THE SITE. AS THE RUNOFF FROM THE SITE TRAVELS TO THIS POINT, RUNOFF TEMP IS EXPECTED TO COOL AND HAVE A NEGLIGIBLE IMPACT TO THE RECEIVING WATERS. AREA WILL BE RETURNED TO EXISTING CONDITIONS FOLLOWING CONSTRUCTION TO PREVENT PERMANENT THERMAL IMPACTS.

CONTRACTOR STAGING AREA SEQUENCE OF CONSTRUCTION

- AT LEAST 7 DAYS PRIOR TO STARTING ANY EARTH DISTURBANCE ACTIVITIES, INCLUDING CLEARING AND GRUBBING, THE OWNER AND/OR OPERATOR SHALL INVITE ALL CONTRACTORS, ENVIRONMENTAL INSPECTORS, THE LANDOWNER, APPROPRIATE MUNICIPAL OFFICIALS, THE E&S PLAN PREPARER, THE PCSM PLAN PREPARER, THE LICENSED PROFESSIONAL RESPONSIBLE FOR OVERSIGHT OF CRITICAL STAGES OF IMPLEMENTATION OF THE PCSM PLAN, AND A REPRESENTATIVE FROM THE LOCAL CONSERVATION DISTRICT TO AN ON-SITE PRECONSTRUCTION MEETING.
- AT LEAST 3 DAYS PRIOR TO STARTING ANY EARTH DISTURBANCE ACTIVITIES, OR EXPANDING INTO AN AREA PREVIOUSLY UNMARKED, THE PENNSYLVANIA ONE CALL SYSTEM INC. SHALL BE NOTIFIED AT 1-800-242-1776 FOR THE LOCATION OF EXISTING UNDERGROUND UTILITIES.
- HOLD PRE-CONSTRUCTION CONFERENCE WITH THE ENVIRONMENTAL INSPECTORS, LOCAL COUNTY CONSERVATION DISTRICT (CCD), PADEP AND DESIGN ENGINEER.
- LOCATE STAGING AREAS AND ACCESS POINTS INCLUDING CONSTRUCTION ENTRANCES. INSTALL SEDIMENT BARRIERS (COMPOST FILTER SOCK) DOWN SLOPE OF THESE AREAS.
- INSTALL CONSTRUCTION ENTRANCES AND ASSOCIATED CULVERTS.
- REMOVE BRUSH TO EFFECTIVELY INSTALL PERIMETER CONTROLS, LEVEL SIDE CUTS TO GRANT ACCESS FOR VEHICLES AND WORKERS TO SAFELY PERFORM THE INSTALLATION OF SEDIMENT BARRIERS ON THE SITE AS SHOWN ON THE CONSTRUCTION DRAWINGS.
- THE COMPLIANCE MANAGER SHALL PROVIDE PADEP AT LEAST THREE DAYS' NOTICE PRIOR TO BULK EARTH DISTURBANCE AND UPON COMPLETED INSTALLATION OF PERIMETER EROSION CONTROLS.
- INSTALL PERIMETER FILTER SOCK DIVERSION, COMPOST FILTER SOCKS, AND ALL ASSOCIATED RIP RAP APRONS.
- IF APPLICABLE, INSTALL ORANGE CONSTRUCTION AND/OR SECURITY FENCE. THE NECESSITY OF A SECURITY FENCE WILL BE AT THE DISCRETION OF THE CONTRACTOR.
- BEGIN CONSTRUCTION STAGING FOR LAYOUT OF LIMITS OF GRAVEL LOT.
- IMMEDIATELY STABILIZE THE SITE WITH GEOTEXTILE AND GRAVEL SURFACING WHERE INDICATED IN THE E&S PLANS. REMAINING DISTURBED AREAS SHALL BE FERTILIZED, SEED, AND MULCHED. SEED MIXTURES, FERTILIZER, AND MULCH APPLICATION RATES AND DATES SHALL BE IN ACCORDANCE WITH THE TABLES PROVIDED WITHIN THE GENERAL NOTES SECTION OF THE E&S PLANS, LANDOWNER AGREEMENTS, AND THE ENVIRONMENTAL CONSTRUCTION PLAN FOR PENNSYLVANIA.
- UPON TEMPORARY CESSATION OF AN EARTH DISTURBANCE ACTIVITY OR ANY STAGE OF AN ACTIVITY WHERE THE CESSATION OF EARTH DISTURBANCE ACTIVITIES WILL EXCEED FOUR DAYS, THE SITE SHALL BE IMMEDIATELY SEED, MULCHED, OR OTHERWISE PROTECTED FROM ACCELERATED EROSION AND SEDIMENTATION PENDING FUTURE EARTH DISTURBANCE ACTIVITIES. FOR AN EARTH DISTURBANCE ACTIVITY OR ANY STAGE OF AN ACTIVITY TO BE CONSIDERED TEMPORARILY STABILIZED, THE DISTURBED AREAS SHALL BE COVERED WITH ONE OF THE FOLLOWING: A MINIMUM UNIFORM COVERAGE OF MULCH AND SEED, WITH A DENSITY CAPABLE OF RESISTING ACCELERATED EROSION AND SEDIMENTATION, OR AN ACCEPTABLE BMP, WHICH TEMPORARILY MINIMIZES ACCELERATED EROSION AND SEDIMENTATION. TEMPORARY STABILIZATION WILL NOT OCCUR ON ACTIVE VEHICULAR TRAVEL WAYS WITHIN THE RIGHT OF WAY. THE ON-SITE ENVIRONMENTAL INSPECTOR WILL LOG DAILY ACTIVITY WITHIN THE LIMITS OF DISTURBANCE AND NOTIFY THE CONTRACTOR OF AREAS REQUIRING TEMPORARY STABILIZATION (I.E., AREAS WHERE WORK HAS CEASED FOR AT LEAST FOUR DAYS).
- ONCE THE SITE IS DEEMED NO LONGER NECESSARY AND AFTER THE STABILIZATION OF THE PIPELINE ROW, REMOVE ALL GRAVEL AND GEOTEXTILE FABRIC FROM THE SITE. BMP'S WILL REMAIN IN PLACE AND FUNCTIONAL.
- LOOSEN AND DE-COMPACT TOPSOIL THROUGHOUT THE SITE AND GRADE THE SITE SO FINISH GRADES AND DRAINAGE PATTERNS MATCH PRECONSTRUCTION CONDITIONS. IMMEDIATELY FERTILIZE SEED AND STABILIZE AREAS AT FINISHED GRADE. MAINTAIN E&S CONTROL DEVICES UNTIL SITE WORK IS COMPLETE AND UNIFORM 70% PERENNIAL VEGETATIVE COVER IS ESTABLISHED.
- UPON COMPLETION OF ALL EARTH DISTURBANCE ACTIVITIES AND PERMANENT STABILIZATION OF ALL DISTURBED AREAS, THE OWNER AND/OR OPERATORS SHALL CONTACT THE LOCAL CCD FOR AN INSPECTION PRIOR TO THE REMOVAL OF THE E&S BMP'S.
- AFTER SITE IS PERMANENTLY STABILIZED AND UPON COMPANY APPROVAL OF STABILIZATION AND RE-VEGETATION, REMOVE TEMPORARY E&S MEASURES AND STABILIZE AREAS DISTURBED BY REMOVAL.
- COMPLETE SITE STABILIZATION, INCLUDING SOIL TREATMENT, SEED APPLICATION AND MULCHING.
- UPON COMPLETION OF ALL EARTH DISTURBANCE ACTIVITIES, REMOVAL OF ALL TEMPORARY BMP'S AND PERMANENT STABILIZATION OF ALL DISTURBED AREAS, THE OWNER AND/OR OPERATORS SHALL CONTACT THE LOCAL CCD FOR A FINAL INSPECTION.
- REMOVE AND PROPERLY DISPOSE/RECYCLE E&S BMP'S. REMOVE ORANGE CONSTRUCTION FENCING AND SECURITY FENCE. REPAIR AND PERMANENTLY STABILIZE AREAS DISTURBED DURING BMP REMOVAL.

* DESIGNATES CRITICAL STAGE OF PCSM INSTALLATION TO BE OBSERVED BY A LICENSED PROFESSIONAL OR DESIGNEE. CONTRACTOR TO PROVIDE THREE WORKING DAYS' NOTICE TO DESIGN ENGINEER.

SEDIMENT BARRIER TABLE	
SEDIMENT BARRIER DESIGNATION	SEDIMENT BARRIER TYPE
1	32 INCH FILTER SOCK
2	24 INCH FILTER SOCK
3	24 INCH FILTER SOCK
4	24 INCH FILTER SOCK
5	24 INCH FILTER SOCK
6	24 INCH FILTER SOCK
7	24 INCH FILTER SOCK
8	24 INCH FILTER SOCK
9	32 INCH FILTER SOCK
10	32 INCH FILTER SOCK
11	32 INCH FILTER SOCK
12	24 INCH FILTER SOCK
13	24 INCH FILTER SOCK
14	18 INCH FILTER SOCK
15	18 INCH FILTER SOCK
16	12 INCH FILTER SOCK
17	12 INCH FILTER SOCK
18	24 INCH FILTER SOCK
19	24 INCH FILTER SOCK
20	24 INCH FILTER SOCK
21	18 INCH FILTER SOCK
22	18 INCH FILTER SOCK
23	18 INCH FILTER SOCK
24	18 INCH FILTER SOCK
25	12 INCH FILTER SOCK
26	32 INCH FILTER SOCK

SWALE SUMMARY TABLE							
CHANNEL NO.	BOTTOM WIDTH B (FT)	DEPTH D (FT)	TOP WIDTH W (FT)	Z1 (FT)	Z2 (FT)	TEMPORARY LINING*	PERMANENT LINING
A	1	1	7	3	3	C125	N/A

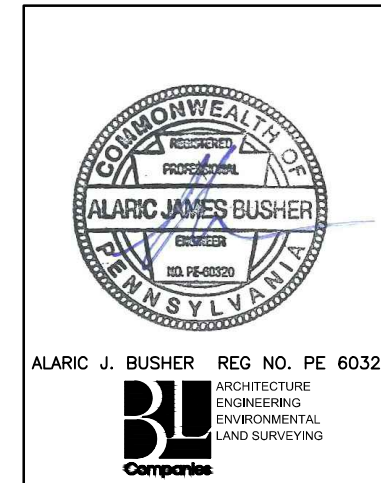
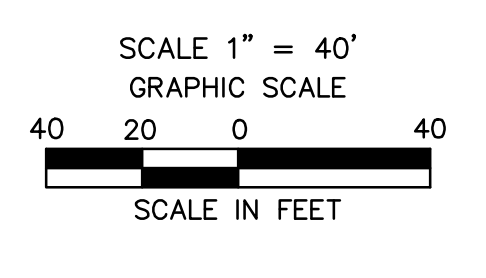
RIPRAP APRON SUMMARY TABLE						
OUTLET NO.	PIPE DIA Pd (IN)	RIPRAP		APRON		
		SIZE (R--)	THICK. Rt (IN)	LENGTH Al (FT)	INITIAL WIDTH Alw (FT)	TERMINAL WIDTH (Atw) (FT)
SWALE A	N/A	3	9	6	7	13

SITE SOIL TYPES

MoB2 MORRIS CHANNERY SILT LOAM, 3 TO 8 PERCENT SLOPES

LIMIT OF DISTURBANCE

AREA OF THE LIMIT OF DISTURBANCE IS: 3,334,362 SF / 7.68 AC.

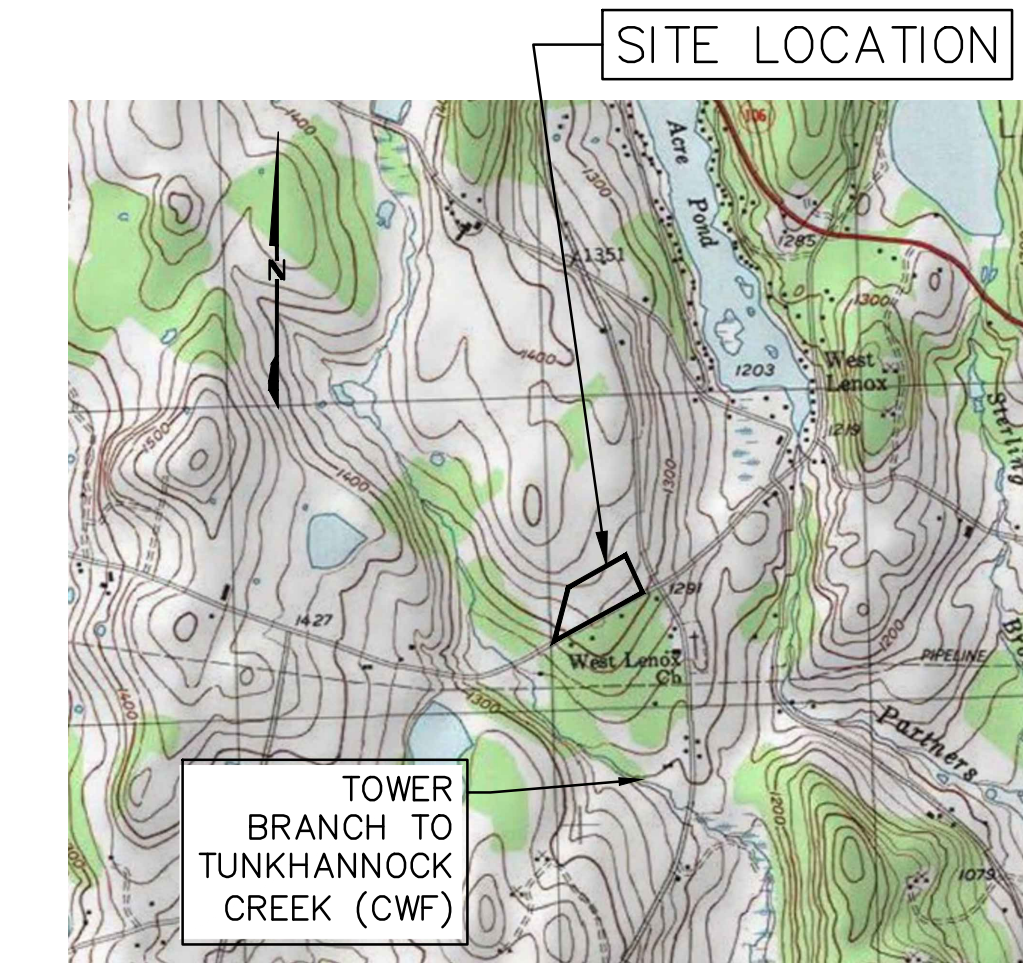


REVISIONS			
NO.	DATE	BY	DESCRIPTION
0	08/26/2015	BL	ISSUED FOR PADEP SUBMITTAL
1	12/02/2015	BL	ISSUED FOR PADEP RESUBMITTAL
2	09/01/2016	BL	MODIFICATION 1 ISSUED FOR PADEP SUBMITTAL
3	Oct. 2016	BL	PADEP TECHNICAL DEFICIENCY RESPONSE #1

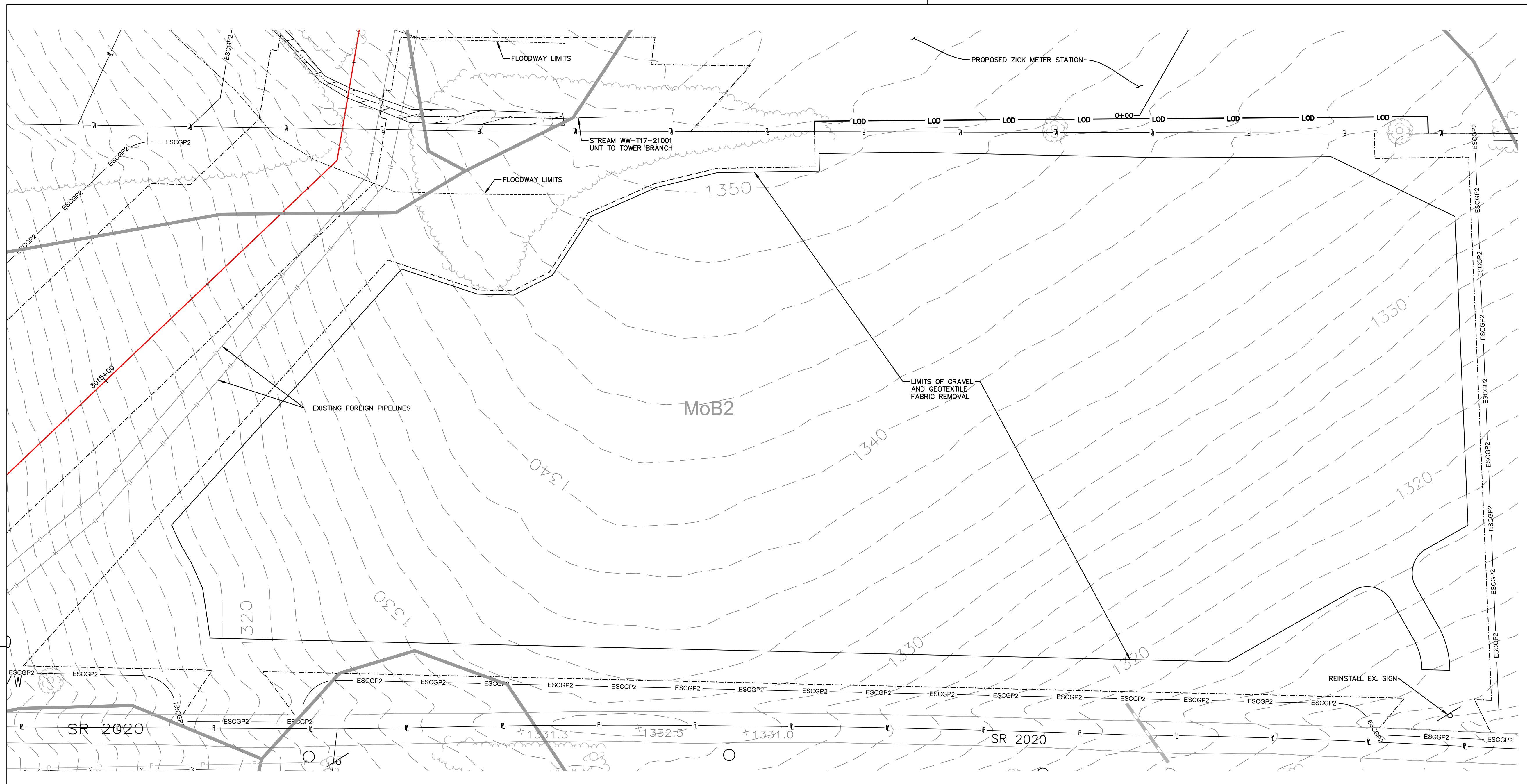
TRANSCONTINENTAL GAS PIPE LINE COMPANY, LLC			
ATLANTIC SUNRISE PROJECT- PROPOSED 30" NATURAL GAS PIPELINE			
SOIL EROSION & SEDIMENT CONTROL AND LAYOUT PLANS FOR			
ABOVE GROUND FACILITIES & ASSOCIATED PERMANENT ACCESS ROADS			
SUSQUEHANNA COUNTY, PENNSYLVANIA			
SOIL EROSION & SEDIMENT CONTROL PLAN			
DRAWN BY:	HFT	DATE:	04/03/15
CHECKED BY:	AB	DATE:	04/03/15
APPROVED BY:	AB	DATE:	04/03/15
NO.:	1161481	SCALE:	AS NOTED
ISSUED FOR:	ISSUED FOR CONSTRUCTION	REVISION:	3
DRAWING NUMBER:	24-1601-70-28-A/1683_3	SHEET:	1
PROJECT NO.:	CSA-CN-CSA-SU-1-008	OF:	2



Drawn By & Date/Time: contantuser; Nov 11, 2016 11:57am
 Drawing Location & Name: G:\08514\14C\14C4909\DWG\010-CPLN\CV_EC14C4909\10_LCSA-SU-1-008.dwg



LOCATION MAP
USGS LENOXVILLE QUADRANGLE
SCALE: 1"=2,000'



LEGEND

EXISTING FEATURES

- PROPERTY BOUNDARY LINE (APPROXIMATE)
- EXISTING MAJOR CONTOUR (10' INTERVAL)
- EXISTING MINOR CONTOUR (2' INTERVAL)
- FENCE
- STONE ROW
- SOIL BOUNDARY
- TREELINE
- CENTERLINE STREAM/EDGE WATERBODY
- DELINEATED WETLANDS
- SPOT ELEVATION
- TREE OR BUSH
- UTILITY POLE AND UTILITY LINE
- GUY POLE
- GUY POLE OR ANCHOR
- POST
- SIGN
- WATER WELL
- UTILITY BOX
- MONUMENT (PROPERTY BOUNDARY MARKER)
- IRON PIPE OR PIM (PROPERTY BOUNDARY MARKER)
- SOIL TYPE DESIGNATION
- UTILITY POLE AND UTILITY LINE

Wsb

PROPOSED FEATURES

- PROPOSED PIPELINE
- LIMIT OF DISTURBANCE (CONTRACTOR STAGING AREA)
- LIMIT OF DISTURBANCE (OVERALL PIPELINE PROJECT)
- ESCGP2 PERMIT BOUNDARY

RECEIVING WATERCOURSE - CHAPTER 93 DESIGNATION
THE RECEIVING WATERCOURSE IS TOWER BRANCH TO TUNKHANNOCK CREEK, DESIGNATED AS CWF.

SITE SOIL TYPES

MoB2	MORRIS CHANNERY SILT LOAM, 3 TO 8 PERCENT SLOPES
------	--

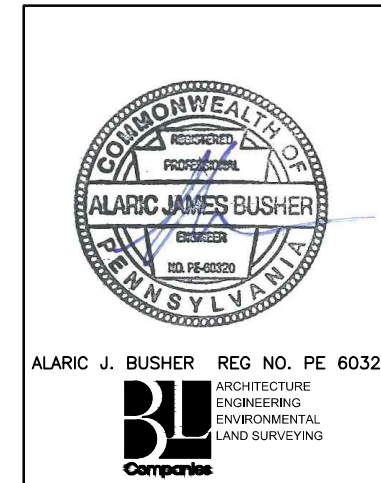
ESCGP-2 PERMIT TABLE

LIMIT OF PERMIT BOUNDARY/SITE AREA FOR CN-CSA-SU-1-008	INCLUDED IN OVERALL PERMIT AREA
LIMIT OF DISTURBANCE	7.68 AC.
AREA OF PROTECTED /SENSITIVE VALUE FEATURES	0.00 AC.
AREA OF RIPARIAN FOREST BUFFER PROTECTION	0.00 AC.
AREA OF MINIMUM DISTURBANCE/REDUCED GRADING	0.00 AC.
IMPERVIOUS AREA*	0.00 AC.
IMPERVIOUS AREA CONTROLLED BY BMPS*	0.00 AC.

*CONTRACTOR STAGING AREA IS A TEMPORARY FACILITY AND WILL BE RESTORED TO PRE-CONSTRUCTION GRADES AND DRAINAGE PATTERNS IN A VEGETATIVE CONDITION AT THE COMPLETION OF CONSTRUCTION

NOTE: SITE TO BE STABILIZED WITH GRAVEL SURFACE DURING SITE OPERATIONS. SEDIMENT CONTROL DEVICES ARE TO REMAIN IN PLACE AND FUNCTIONAL UNTIL COMPLETION OF FINAL STABILIZATION. REFER TO EROSION AND SEDIMENT CONTROL PLAN CONSTRUCTION SEQUENCE NOTES.

RESTORE ENTIRE DISTURBED AREA TO PRE-CONSTRUCTION GRADES AND DRAINAGE PATTERNS IN EXISTING VEGETATIVE CONDITION OR BETTER.



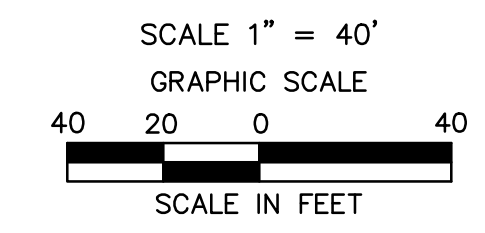
REVISIONS

NO.	DATE	BY	DESCRIPTION	W.D. NO.	CHK.	APP.
0	08/26/2015	BL	ISSUED FOR PADEP SUBMITTAL	W0161481	SMK	
1	12/02/2015	BL	ISSUED FOR PADEP RESUBMITTAL	W0161481	SMK	
2	09/01/2016	BL	MODIFICATION 1 ISSUED FOR PADEP SUBMITTAL	W0161481	AJB	
3	Oct. 2016	BL	PADEP TECHNICAL DEFICIENCY RESPONSE #1	W0161481	AJB	AJB

TRANSCONTINENTAL GAS PIPE LINE COMPANY, LLC
ATLANTIC SUNRISE PROJECT- PROPOSED 30" NATURAL GAS PIPELINE
POST CONSTRUCTION STORMWATER MANAGEMENT PLANS FOR
ABOVE GROUND FACILITIES & ASSOCIATED PERMANENT ACCESS ROADS
SUSQUEHANNA COUNTY, PENNSYLVANIA
SITE RESTORATION PLAN

Williams

DRAWN BY: HFT	DATE: 04/03/15	ISSUED FOR BID:	SCALE: AS NOTED
CHECKED BY: AJB	DATE: 04/03/15	ISSUED FOR CONSTRUCTION:	REVISION: 3
APPROVED BY: AJB	DATE: 04/03/15	DRAWING NUMBER: 24-1601-70-28-A/1683_3	SHEET 2 OF 2
W.D. NO.: 1161481		PROJECT NO.: CN-CSA-SU-1-008	



Drawn By & Date/Time: contomuser Nov 11, 2016 - 12:01pm
Drawing Location & Name: G:\JOBS\14\14C\14C4909\DWG\010-CPLN\CY_PCSM14C4909(10)_CSA-SU-1-008.dwg