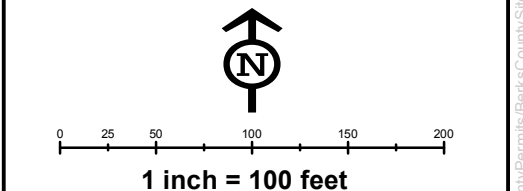
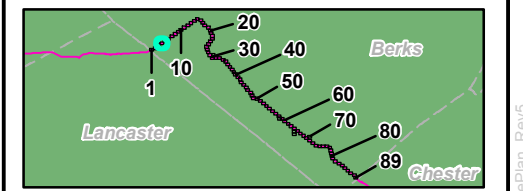


- Legend**
- Sheet Boundary
 - PPP 1
 - PPP 2
 - PPP 1, Bore
 - PPP 1, HDD
 - PPP 2, Bore
 - PPP 2, HDD
 - Pullback String
 - Permanent Easement (no surface disturbance)
 - Permanent ROW
 - Temporary ROW
 - ATWS
 - Permanent Access Road
 - Temporary Access Road
 - ROW-Travel LOD
 - ROW-Travel and Clearing LOD
 - Existing Block Valve
 - New Block Valve
 - Block Valve Setting LOD
 - Station LOD
 - Bore Pits
 - PEM Wetland
 - PFO Wetland
 - PSS Wetland
 - Pond
 - Ephemeral Stream
 - Intermittent Stream
 - Perennial Stream
 - Chapter 105 Floodway
 - Waived Floodway
 - Ch. 106 Floodplain Fringe

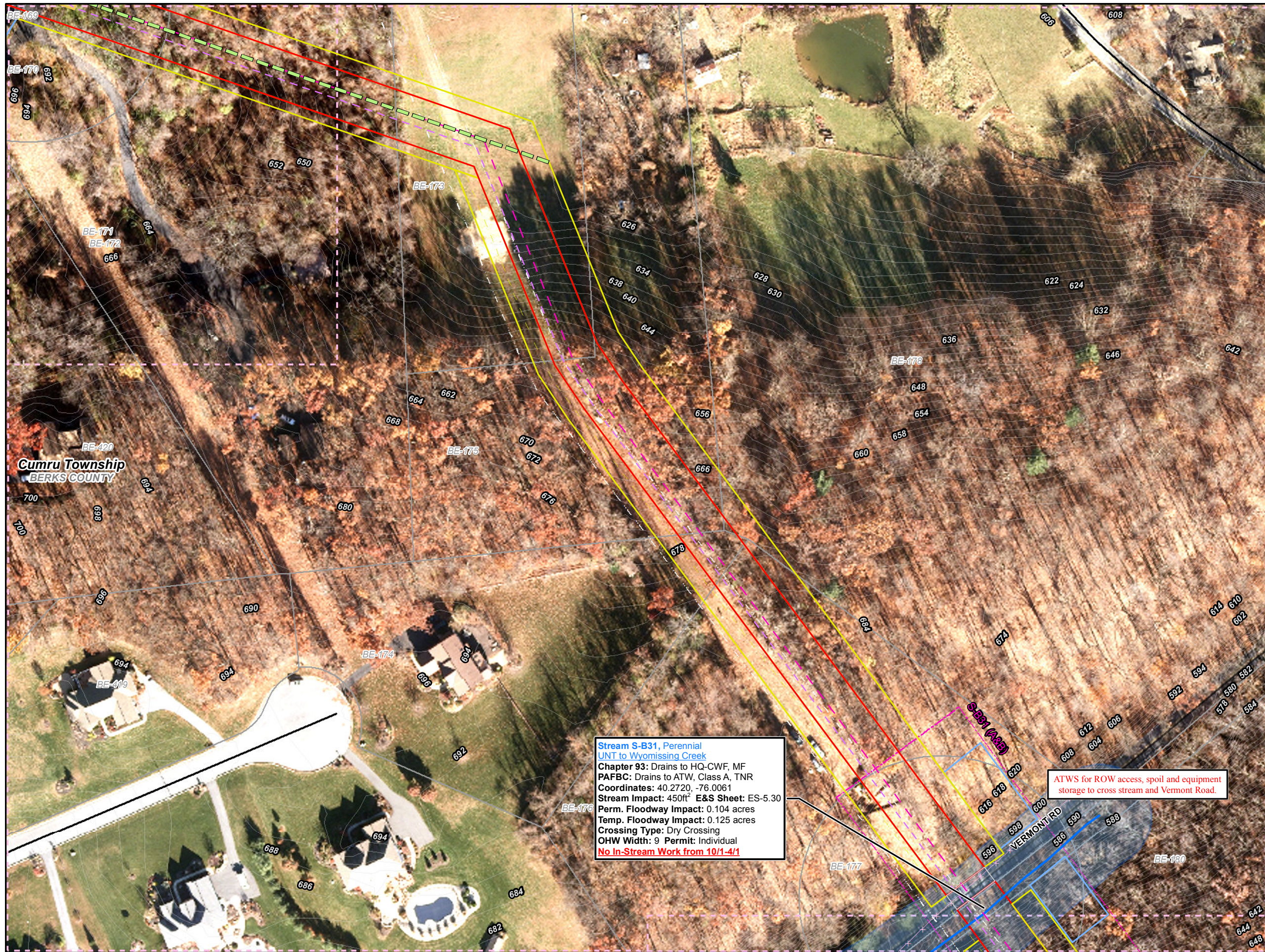


**Site Plan for the Sunoco
Pennsylvania Pipeline Project,
Berks County, PA.
Sheet 4 of 89**

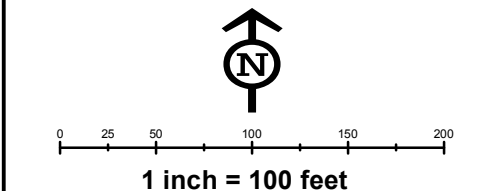
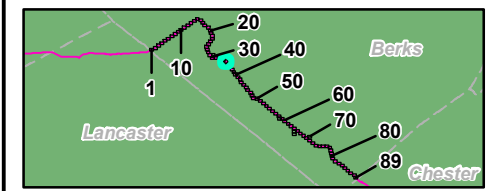
Prepared By: **TETRA TECH** Date: **01/2017**

Base Map: SPLP 2014-2016, Roads from NRCS Geo-spatial Data Giveaway, 100-Year Floodplain from FEMA NFHL, downloaded 9/2016. Aquatics, TT 2013-2016.
 Coordinate System: NAD 83 Stateplane, PA South, Feet

P:\GIS\Projects\1121\CS9586-PPP\70\XDR\Permits\County\Permits\BerksCounty\SitePlan_Rev15



- Legend**
- Sheet Boundary
 - PPP 1
 - PPP 2
 - PPP 1, Bore
 - PPP 1, HDD
 - PPP 2, Bore
 - PPP 2, HDD
 - Pullback String
 - Permanent Easement (no surface disturbance)
 - Permanent ROW
 - Temporary ROW
 - ATWS
 - Permanent Access Road
 - Temporary Access Road
 - ROW-Travel LOD
 - ROW-Travel and Clearing LOD
 - Existing Block Valve
 - New Block Valve
 - Block Valve Setting LOD
 - Station LOD
 - Bore Pits
 - PEM Wetland
 - PFO Wetland
 - PSS Wetland
 - Pond
 - Ephemeral Stream
 - Intermittent Stream
 - Perennial Stream
 - Chapter 105 Floodway
 - Waived Floodway
 - Ch. 106 Floodplain Fringe



Stream S-B31, Perennial
 UNT to Wyomissing Creek
 Chapter 93: Drains to HQ-CWF, MF
 PAFBC: Drains to ATW, Class A, TNR
 Coordinates: 40.2720, -76.0061
 Stream Impact: 450ft² E&S Sheet: ES-5.30
 Perm. Floodway Impact: 0.104 acres
 Temp. Floodway Impact: 0.125 acres
 Crossing Type: Dry Crossing
 OHW Width: 9 Permit: Individual
No In-Stream Work from 10/1-4/1

ATWS for ROW access, spoil and equipment storage to cross stream and Vermont Road.

Site Plan for the Sunoco Pennsylvania Pipeline Project, Berks County, PA. Sheet 35 of 89

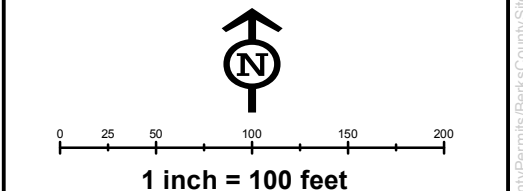
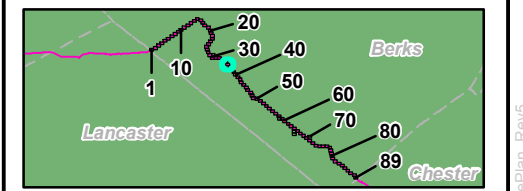
Prepared By: **TETRA TECH** Date: **01/2017**

Base Map: SPLP 2014-2016, Roads from NRCS Geospatial Data Giveaway, 100-Year Floodplain from FEMA NFHL, downloaded 9/2016. Aquatics, TT 2013-2016.
 Coordinate System: NAD 83 Stateplane, PA South, Feet

P:\GIS\Projects\1121C5958-PPP\XDR\Permits\BerksCounty\SitePlan_Rev15



- Legend**
- Sheet Boundary
 - PPP 1
 - PPP 2
 - PPP 1, Bore
 - PPP 1, HDD
 - PPP 2, Bore
 - PPP 2, HDD
 - Pullback String
 - Permanent Easement (no surface disturbance)
 - Permanent ROW
 - Temporary ROW
 - ATWS
 - Permanent Access Road
 - Temporary Access Road
 - ROW-Travel LOD
 - ROW-Travel and Clearing LOD
 - Existing Block Valve
 - New Block Valve
 - Block Valve Setting LOD
 - Station LOD
 - Bore Pits
 - PEM Wetland
 - PFO Wetland
 - PSS Wetland
 - Pond
 - Ephemeral Stream
 - Intermittent Stream
 - Perennial Stream
 - Chapter 105 Floodway
 - Waived Floodway
 - Ch. 106 Floodplain Fringe



**Site Plan for the Sunoco
Pennsylvania Pipeline Project,
Berks County, PA.
Sheet 36 of 89**

Prepared By: TETRA TECH	Date: 01/2017
-----------------------------------	-------------------------

Base Map; SPLP 2014-2016, Roads from NRCS Geospatial Data Giveaway, 100-Year Floodplain from FEMA NFHL, downloaded 9/2016. Aquatics, TT 2013-2016.
 Coordinate System: NAD 83 Stateplane, PA South, Feet

P:\GIS\Projects\1121\CS958-PPP\7\XDR\Fermitis\BerksCounty\SheetPlan_Rev5