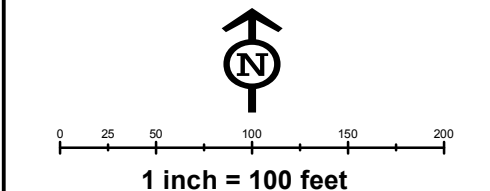
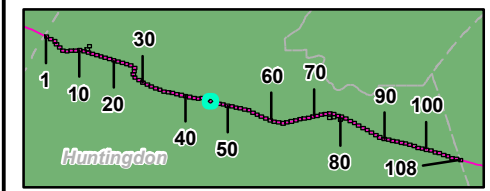




- Legend**
- Sheet Boundary
 - PPP 1
 - PPP 2
 - PPP 1, Bore
 - PPP 1, HDD
 - PPP 2, Bore
 - PPP 2, HDD
 - Pullback String
 - Permanent Easement (no surface disturbance)
 - Permanent ROW
 - Temporary ROW
 - ATWS
 - Permanent Access Road
 - Temporary Access Road
 - ROW-Travel LOD
 - ROW-Travel and Clearing LOD
 - Existing Block Valve
 - New Block Valve
 - Block Valve Setting LOD
 - Station LOD
 - Bore Pits
 - PEM Wetland
 - PFO Wetland
 - PSS Wetland
 - Pond
 - Ephemeral Stream
 - Intermittent Stream
 - Perennial Stream
 - Chapter 105 Floodway
 - Waived Floodway
 - Ch. 106 Floodplain Fringe

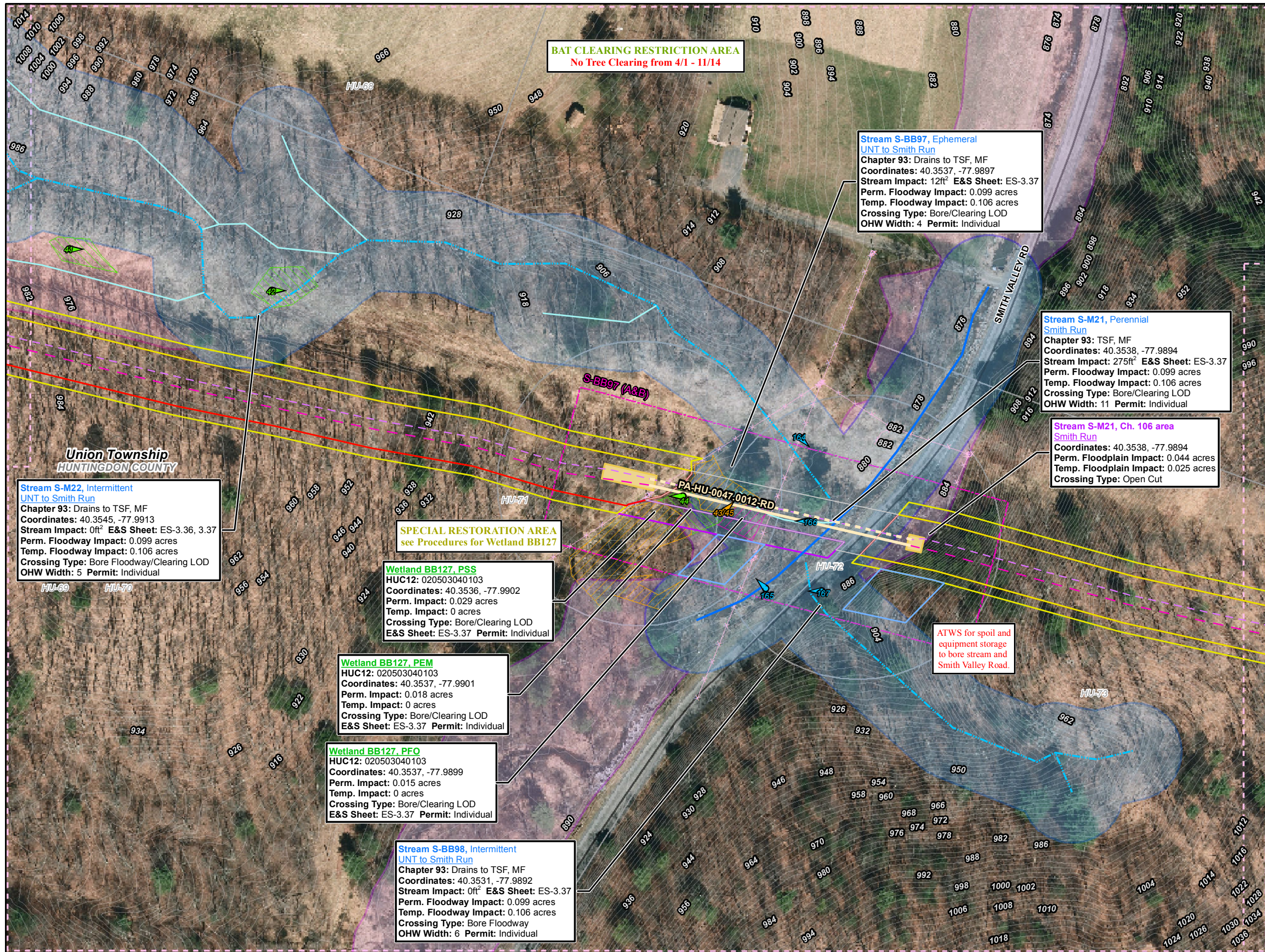


**Site Plan for the Sunoco
Pennsylvania Pipeline Project,
Huntingdon County, PA.
Sheet 46 of 108**

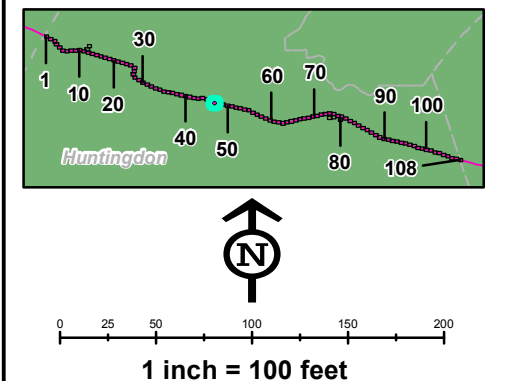
Prepared By:  TETRA TECH	Date: 02/2017
--	--------------------------------

Base Map: SPLP 2014-2016, Roads from NRCS Geo-spatial Data Giveaway, 100-Year Floodplain from FEMA NFHL, downloaded 9/2016. Aquatics, TT 2013-2016.
Coordinate System: NAD 83 Stateplane, PA South, Feet

P:\GIS\Projects\1121C8958-PPP\10\XDR\Fermitis\HuntingdonCounty\SitePlan_Rev15



- ### Legend
- Sheet Boundary
 - PPP 1
 - PPP 2
 - PPP 1, Bore
 - PPP 1, HDD
 - PPP 2, Bore
 - PPP 2, HDD
 - Pullback String
 - Permanent Easement (no surface disturbance)
 - Permanent ROW
 - Temporary ROW
 - ATWS
 - Permanent Access Road
 - Temporary Access Road
 - ROW-Travel LOD
 - ROW-Travel and Clearing LOD
 - Existing Block Valve
 - New Block Valve
 - Block Valve Setting LOD
 - Station LOD
 - Bore Pits
 - PEM Wetland
 - PFO Wetland
 - PSS Wetland
 - Pond
 - Ephemeral Stream
 - Intermittent Stream
 - Perennial Stream
 - Chapter 105 Floodway
 - Waived Floodway
 - Ch. 106 Floodplain Fringe

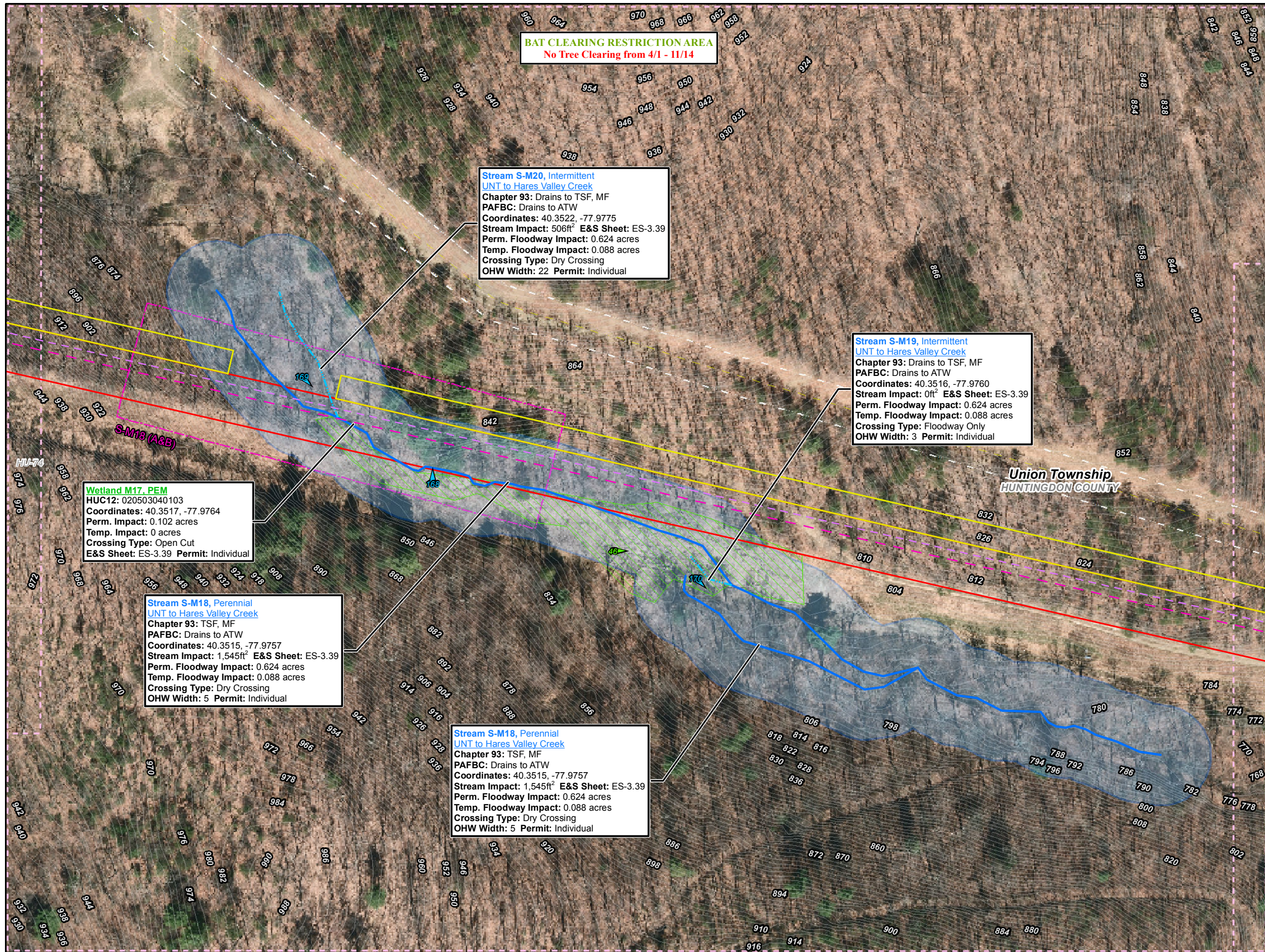


Site Plan for the Sunoco Pennsylvania Pipeline Project, Huntingdon County, PA.
Sheet 47 of 108

Prepared By:	Date:
TETRA TECH	02/2017

Base Map: SPLP 2014-2016, Roads from NRCS Geospatial Data Giveaway, 100-Year Floodplain from FEMA NFHL, downloaded 9/2016. Aquatics, TT 2013-2016.
Coordinate System: NAD 83 Stateplane, PA South, Feet

P:\GIS\Projects\1121\CS958-PPP\10\XDR\Femmis\CountyPermits\HuntingdonCounty\SitePlan_Rev0



BAT CLEARING RESTRICTION AREA
 No Tree Clearing from 4/1 - 11/14

Stream S-M20, Intermittent
 UNT to Hares Valley Creek
 Chapter 93: Drains to TSF, MF
 PAFBC: Drains to ATW
 Coordinates: 40.3522, -77.9775
 Stream Impact: 506ft² E&S Sheet: ES-3.39
 Perm. Floodway Impact: 0.624 acres
 Temp. Floodway Impact: 0.088 acres
 Crossing Type: Dry Crossing
 OHW Width: 22 Permit: Individual

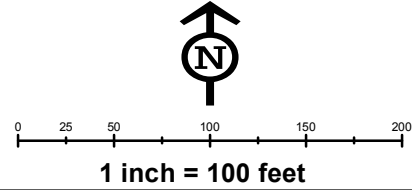
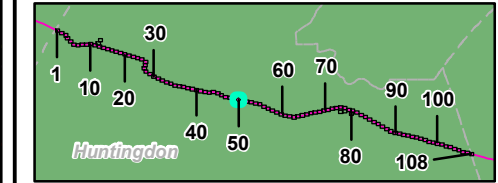
Stream S-M19, Intermittent
 UNT to Hares Valley Creek
 Chapter 93: Drains to TSF, MF
 PAFBC: Drains to ATW
 Coordinates: 40.3516, -77.9760
 Stream Impact: 0ft² E&S Sheet: ES-3.39
 Perm. Floodway Impact: 0.624 acres
 Temp. Floodway Impact: 0.088 acres
 Crossing Type: Floodway Only
 OHW Width: 3 Permit: Individual

Wetland M17, PEM
 HUC12: 020503040103
 Coordinates: 40.3517, -77.9764
 Perm. Impact: 0.102 acres
 Temp. Impact: 0 acres
 Crossing Type: Open Cut
 E&S Sheet: ES-3.39 Permit: Individual

Stream S-M18, Perennial
 UNT to Hares Valley Creek
 Chapter 93: TSF, MF
 PAFBC: Drains to ATW
 Coordinates: 40.3515, -77.9757
 Stream Impact: 1,545ft² E&S Sheet: ES-3.39
 Perm. Floodway Impact: 0.624 acres
 Temp. Floodway Impact: 0.088 acres
 Crossing Type: Dry Crossing
 OHW Width: 5 Permit: Individual

Stream S-M18, Perennial
 UNT to Hares Valley Creek
 Chapter 93: TSF, MF
 PAFBC: Drains to ATW
 Coordinates: 40.3515, -77.9757
 Stream Impact: 1,545ft² E&S Sheet: ES-3.39
 Perm. Floodway Impact: 0.624 acres
 Temp. Floodway Impact: 0.088 acres
 Crossing Type: Dry Crossing
 OHW Width: 5 Permit: Individual

- Legend**
- Sheet Boundary
 - PPP 1
 - PPP 2
 - PPP 1, Bore
 - PPP 1, HDD
 - PPP 2, Bore
 - PPP 2, HDD
 - Pullback String
 - Permanent Easement (no surface disturbance)
 - Permanent ROW
 - Temporary ROW
 - ATWS
 - Permanent Access Road
 - Temporary Access Road
 - ROW-Travel LOD
 - ROW-Travel and Clearing LOD
 - Existing Block Valve
 - New Block Valve
 - Block Valve Setting LOD
 - Station LOD
 - Bore Pits
 - PEM Wetland
 - PFO Wetland
 - PSS Wetland
 - Pond
 - Ephemeral Stream
 - Intermittent Stream
 - Perennial Stream
 - Chapter 105 Floodway
 - Waived Floodway
 - Ch. 106 Floodplain Fringe



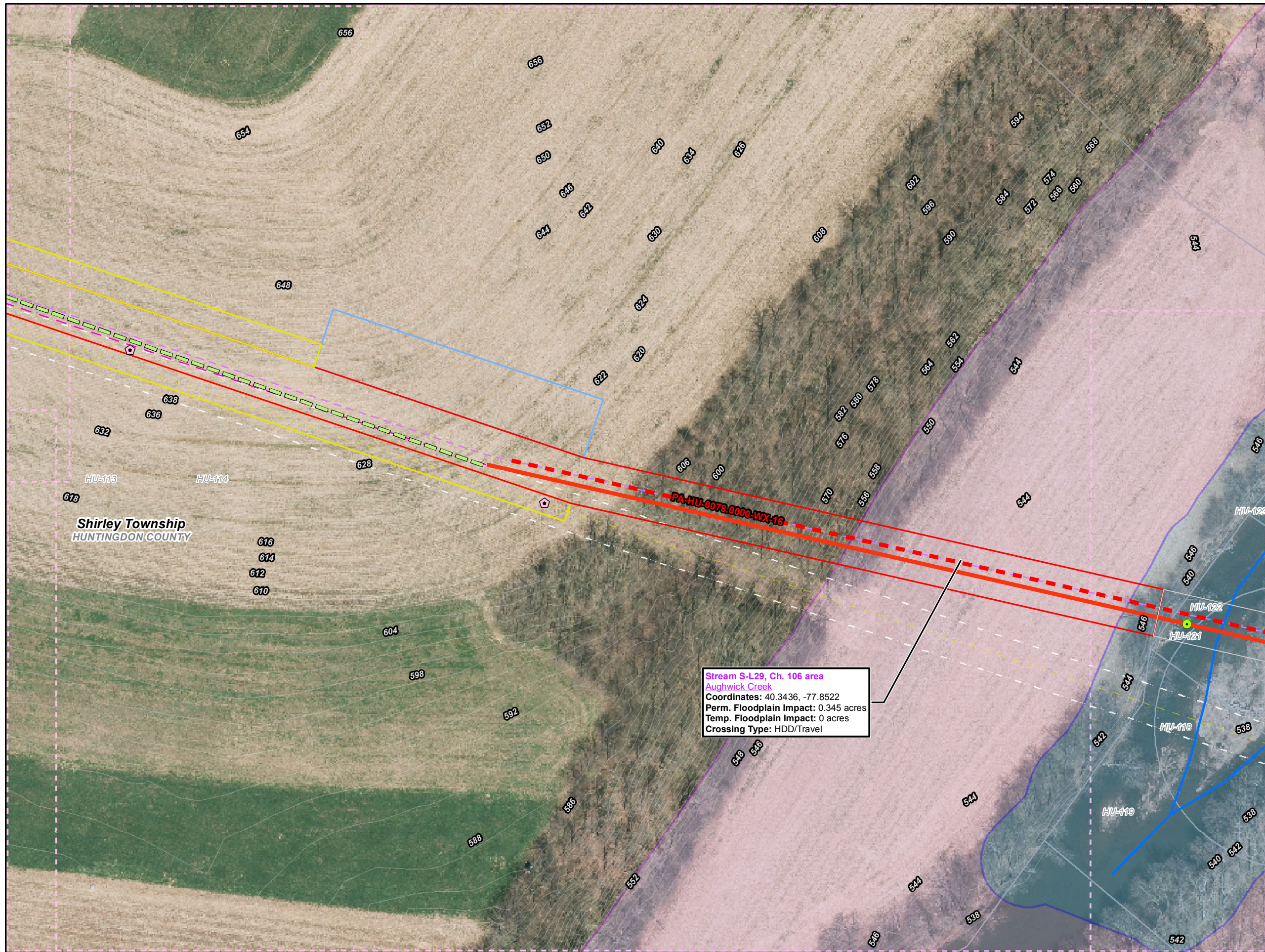
Site Plan for the Sunoco Pennsylvania Pipeline Project, Huntingdon County, PA. Sheet 50 of 108

Prepared By:	Date:
TETRA TECH	02/2017

Base Map: SPLP 2014-2016, Roads from NRCS Geospatial Data Giveaway, 100-Year Floodplain from FEMA NFHL, downloaded 9/2016. Aquatics, TT 2013-2016.

Coordinate System: NAD 83 Stateplane, PA South, Feet

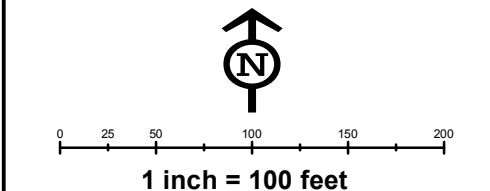
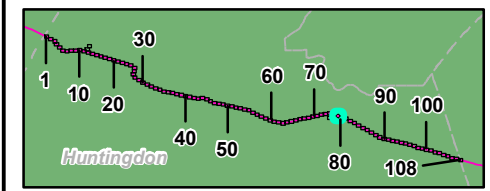
P:\GIS\Projects\1121C5956-PPP\7\XDR\Femmis\CountyPermits\HuntingdonCounty\SitePlan_Rev5



Stream S-L29, Ch. 106 area
 Aughwick Creek
 Coordinates: 40.3436, -77.8522
 Perm. Floodplain Impact: 0.345 acres
 Temp. Floodplain Impact: 0 acres
 Crossing Type: HDD/Travel

Legend

- Sheet Boundary
- PPP 1
- PPP 2
- PPP 1, Bore
- PPP 1, HDD
- PPP 2, Bore
- PPP 2, HDD
- Pullback String
- Permanent Easement (no surface disturbance)
- Permanent ROW
- Temporary ROW
- ATWS
- Permanent Access Road
- Temporary Access Road
- ROW-Travel LOD
- ROW-Travel and Clearing LOD
- Existing Block Valve
- New Block Valve
- Block Valve Setting LOD
- Station LOD
- Bore Pits
- PEM Wetland
- PFO Wetland
- PSS Wetland
- Pond
- Ephemeral Stream
- Intermittent Stream
- Perennial Stream
- Chapter 105 Floodway
- Waived Floodway
- Ch. 106 Floodplain Fringe

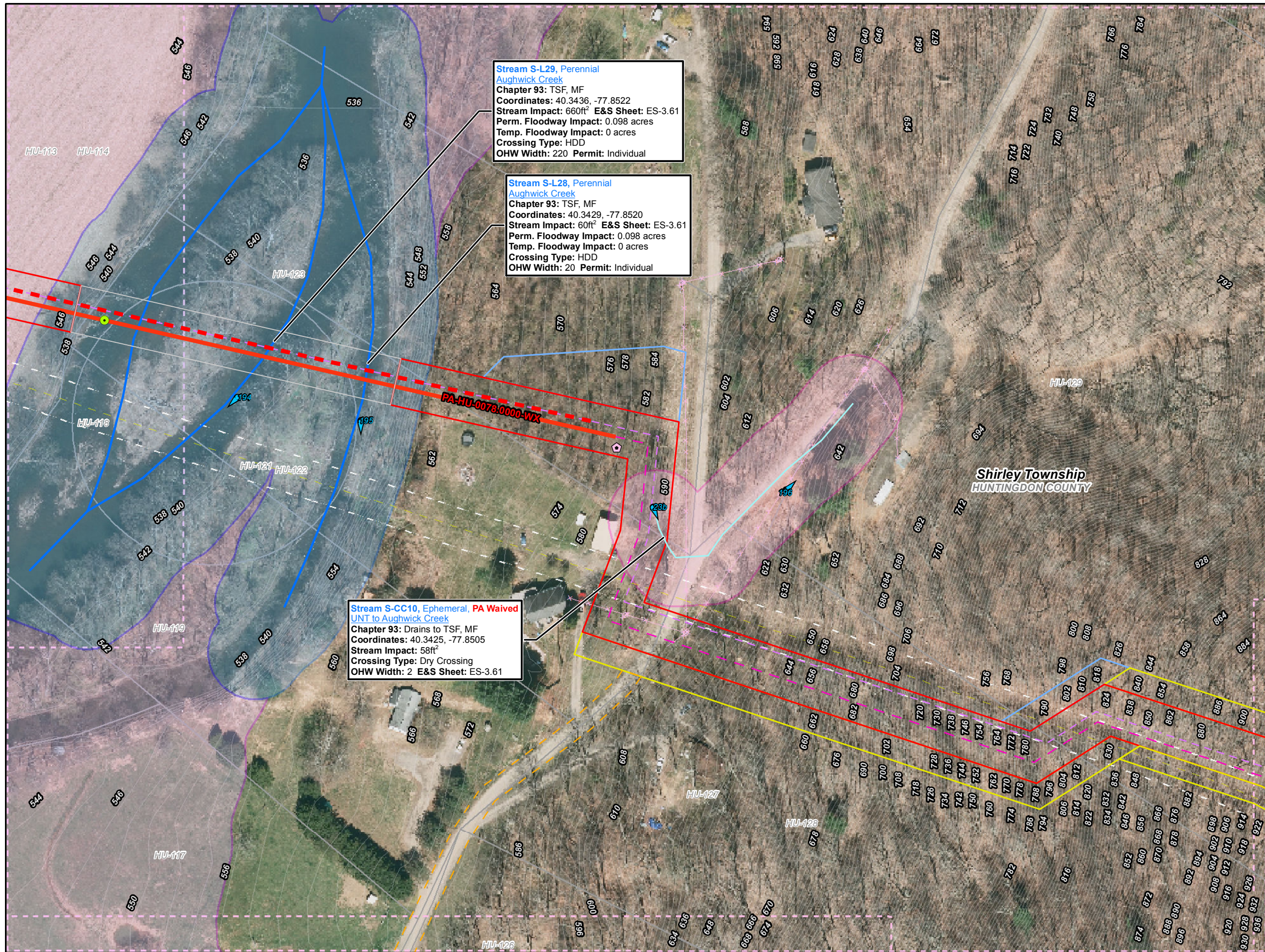


**Site Plan for the Sunoco
 Pennsylvania Pipeline Project,
 Huntingdon County, PA.
 Sheet 78 of 108**

Prepared By: TETRA TECH	Date: 02/2017
-----------------------------------	-------------------------

Base Map: SPLP 2014-2016, Roads from NRCS Geo-spatial Data Giveaway, 100-Year Floodplain from FEMA NFHL, downloaded 9/2016. Aquatics, TT 2013-2016.
 Coordinate System: NAD 83 Stateplane, PA South, Feet

P:\GIS\Projects\1121\055558-PPP\7\XDF\Permits\County\Permits\HuntingdonCounty\SitePlan_Rev5

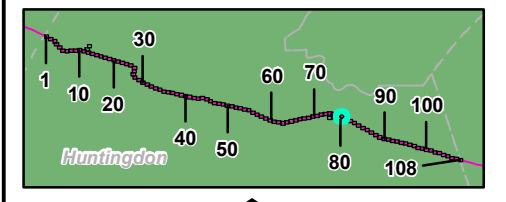


**Stream S-L29, Perennial
Aughwick Creek**
Chapter 93: TSF, MF
Coordinates: 40.3436, -77.8522
Stream Impact: 660ft² E&S Sheet: ES-3.61
Perm. Floodway Impact: 0.098 acres
Temp. Floodway Impact: 0 acres
Crossing Type: HDD
OHW Width: 220 Permit: Individual

**Stream S-L28, Perennial
Aughwick Creek**
Chapter 93: TSF, MF
Coordinates: 40.3429, -77.8520
Stream Impact: 60ft² E&S Sheet: ES-3.61
Perm. Floodway Impact: 0.098 acres
Temp. Floodway Impact: 0 acres
Crossing Type: HDD
OHW Width: 20 Permit: Individual

**Stream S-CC10, Ephemeral, PA Waived
UNT to Aughwick Creek**
Chapter 93: Drains to TSF, MF
Coordinates: 40.3425, -77.8505
Stream Impact: 58ft²
Crossing Type: Dry Crossing
OHW Width: 2 E&S Sheet: ES-3.61

- Legend**
- Sheet Boundary
 - PPP 1
 - PPP 2
 - PPP 1, Bore
 - PPP 1, HDD
 - PPP 2, Bore
 - PPP 2, HDD
 - Pullback String
 - Permanent Easement (no surface disturbance)
 - Permanent ROW
 - Temporary ROW
 - ATWS
 - Permanent Access Road
 - Temporary Access Road
 - ROW-Travel LOD
 - ROW-Travel and Clearing LOD
 - Existing Block Valve
 - New Block Valve
 - Block Valve Setting LOD
 - Station LOD
 - Bore Pits
 - PEM Wetland
 - PFO Wetland
 - PSS Wetland
 - Pond
 - Ephemeral Stream
 - Intermittent Stream
 - Perennial Stream
 - Chapter 105 Floodway
 - Waived Floodway
 - Ch. 106 Floodplain Fringe



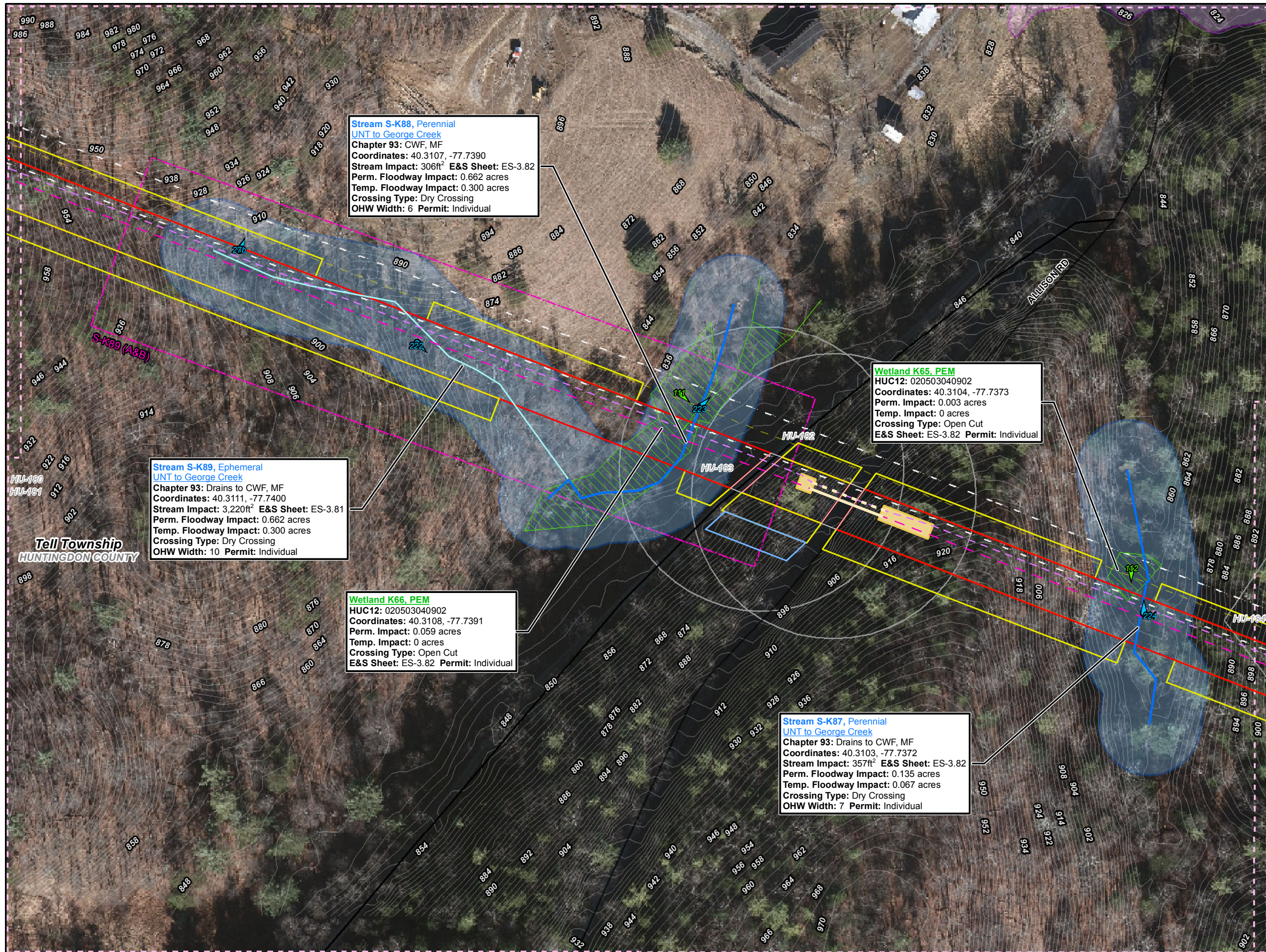
1 inch = 100 feet

**Site Plan for the Sunoco
Pennsylvania Pipeline Project,
Huntingdon County, PA.
Sheet 79 of 108**

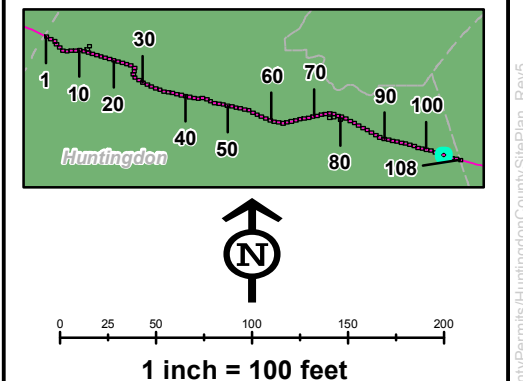
Prepared By: **TETRA TECH** Date: **02/2017**

Base Map: SPLP 2014-2016, Roads from NRCS Geo-spatial Data Giveaway, 100-Year Floodplain from FEMA NFHL, downloaded 9/2016. Aquatics, TT 2013-2016.
Coordinate System: NAD 83 Stateplane, PA South, Feet

P:\GIS\Projects\1121C5958-PPP\79\XDR\Permits\HuntingdonCounty\SitePlan_Rev5



- Legend**
- Sheet Boundary
 - PPP 1
 - PPP 2
 - PPP 1, Bore
 - PPP 1, HDD
 - PPP 2, Bore
 - PPP 2, HDD
 - Pullback String
 - Permanent Easement (no surface disturbance)
 - Permanent ROW
 - Temporary ROW
 - ATWS
 - Permanent Access Road
 - Temporary Access Road
 - ROW-Travel LOD
 - ROW-Travel and Clearing LOD
 - Existing Block Valve
 - New Block Valve
 - Block Valve Setting LOD
 - Station LOD
 - Bore Pits
 - PEM Wetland
 - PFO Wetland
 - PSS Wetland
 - Pond
 - Ephemeral Stream
 - Intermittent Stream
 - Perennial Stream
 - Chapter 105 Floodway
 - Waived Floodway
 - Ch. 106 Floodplain Fringe



Site Plan for the Sunoco Pennsylvania Pipeline Project, Huntingdon County, PA.
 Sheet 104 of 108

Prepared By: **TETRA TECH** Date: **02/2017**

Base Map: SPLP 2014-2016, Roads from NRCS Geospatial Data Giveaway, 100-Year Floodplain from FEMA NFHL, downloaded 9/2016. Aquatics, TT 2013-2016.

Coordinate System: NAD 83 Stateplane, PA South, Feet

P:\GIS\Projects\1121\CS958-PPP\70\XDR\Permits\CountyPermits\HuntingdonCounty\SitePlan_Rev0