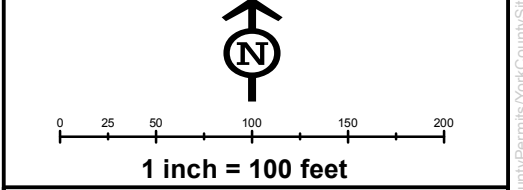
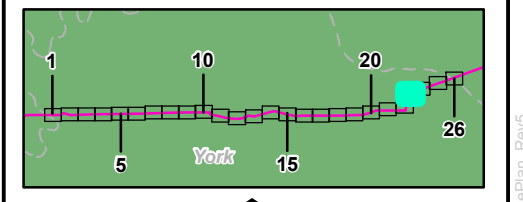


- Legend**
- Sheet Boundary
 - PPP 1
 - PPP 2
 - PPP 1, Bore
 - PPP 1, HDD
 - PPP 2, Bore
 - PPP 2, HDD
 - Pullback String
 - Permanent Easement (no surface disturbance)
 - Permanent ROW
 - Temporary ROW
 - ATWS
 - Permanent Access Road
 - Temporary Access Road
 - ROW-Travel LOD
 - ROW-Travel and Clearing LOD
 - Existing Block Valve
 - New Block Valve
 - Block Valve Setting LOD
 - Station LOD
 - Bore Pits
 - PEM Wetland
 - PFO Wetland
 - PSS Wetland
 - Pond
 - Ephemeral Stream
 - Intermittent Stream
 - Perennial Stream
 - Chapter 105 Floodway
 - Waived Floodway
 - Ch. 106 Floodplain Fringe

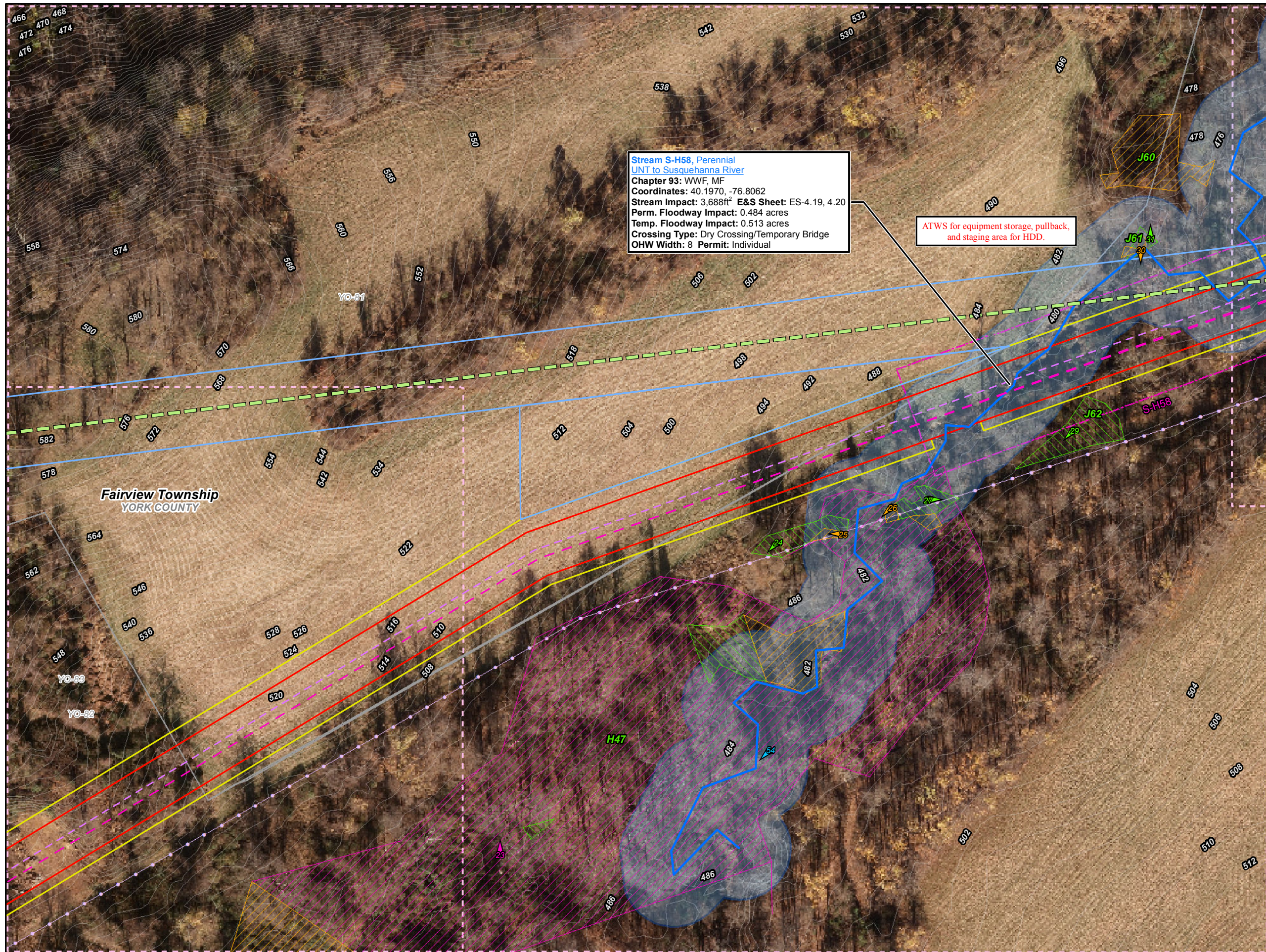


**Site Plan for the Sunoco
Pennsylvania Pipeline Project,
York County, PA.
Sheet 23 of 26**

Prepared By: TETRA TECH	Date: 02/2017
-----------------------------------	-------------------------

Base Map; SPLP 2014-2016, Roads from NRCS Geo-spatial Data Giveaway, 100-Year Floodplain from FEMA NFHL, downloaded 9/2016. Aquatics, TT 2013-2016.
Coordinate System: NAD 83 Stateplane, PA South, Feet

P:\GIS\Projects\1121\CS958-PPP\70\XDR\Femmis\CountyPermits\YorkCounty\SitePlan_Rev6

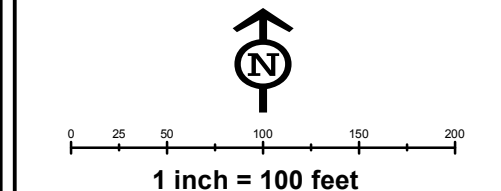
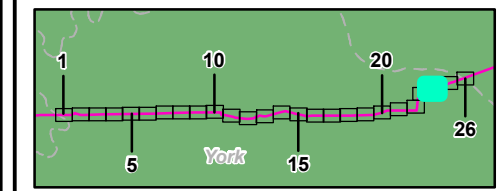


Stream S-H58, Perennial
 UNT to Susquehanna River
 Chapter 93: WWF, MF
 Coordinates: 40.1970, -76.8062
 Stream Impact: 3.688ft² E&S Sheet: ES-4.19, 4.20
 Perm. Floodway Impact: 0.484 acres
 Temp. Floodway Impact: 0.513 acres
 Crossing Type: Dry Crossing/Temporary Bridge
 OHW Width: 8 Permit: Individual

ATWS for equipment storage, pullback,
 and staging area for HDD.

Legend

- Sheet Boundary
- PPP 1
- PPP 2
- PPP 1, Bore
- PPP 1, HDD
- PPP 2, Bore
- PPP 2, HDD
- Pullback String
- Permanent Easement (no surface disturbance)
- Permanent ROW
- Temporary ROW
- ATWS
- Permanent Access Road
- Temporary Access Road
- ROW-Travel LOD
- ROW-Travel and Clearing LOD
- Existing Block Valve
- New Block Valve
- Block Valve Setting LOD
- Station LOD
- Bore Pits
- PEM Wetland
- PFO Wetland
- PSS Wetland
- Pond
- Ephemeral Stream
- Intermittent Stream
- Perennial Stream
- Chapter 105 Floodway
- Waived Floodway
- Ch. 106 Floodplain Fringe

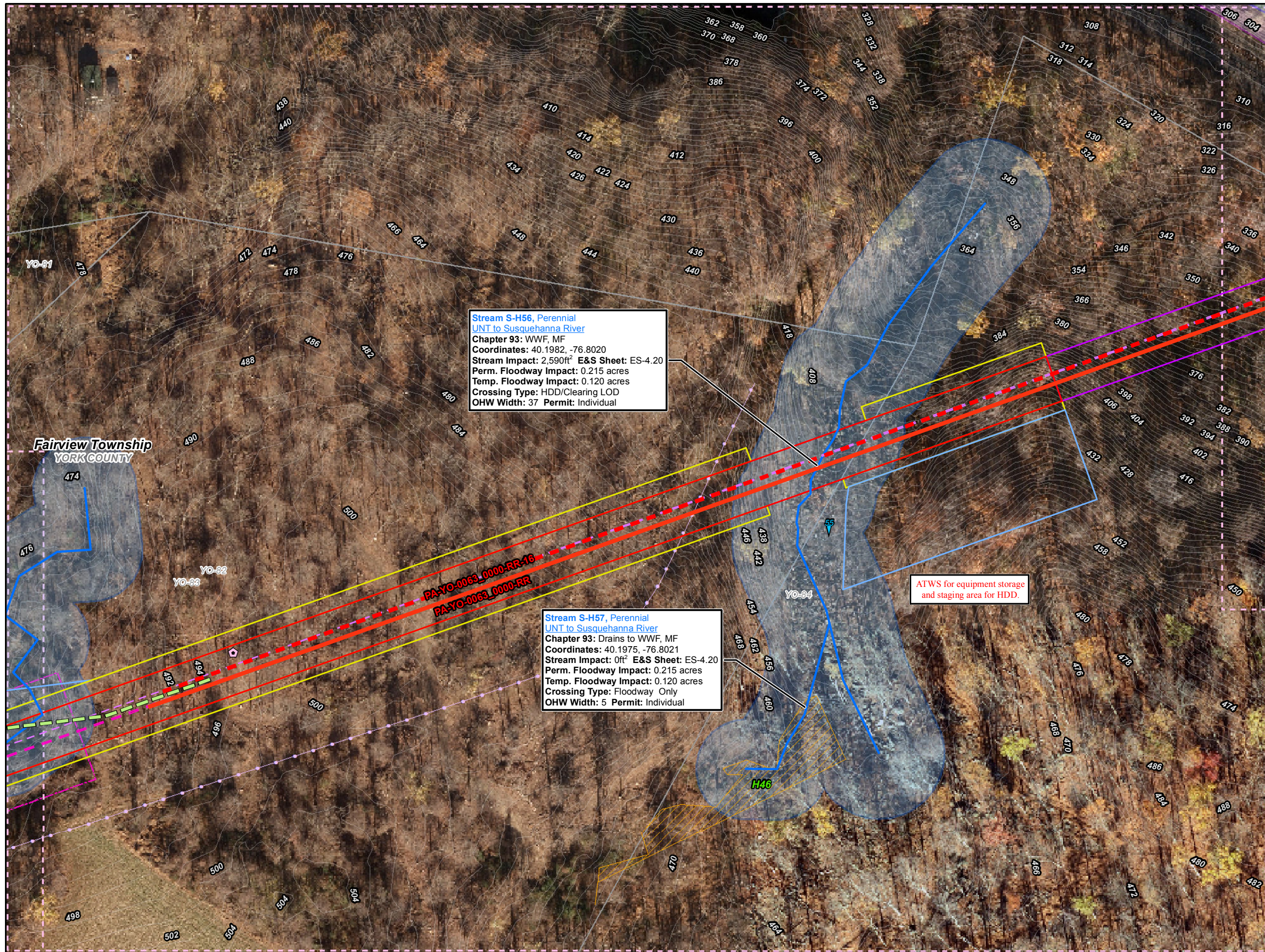


**Site Plan for the Sunoco
 Pennsylvania Pipeline Project,
 York County, PA.
 Sheet 24 of 26**

Prepared By: TETRA TECH	Date: 02/2017
-----------------------------------	-------------------------

Base Map: SPLP 2014-2016, Roads from NRCS Geo-spatial Data Giveaway, 100-Year Floodplain from FEMA NFHL, downloaded 9/2016. Aquatics, TT 2013-2016.
 Coordinate System: NAD 83 Stateplane, PA South, Feet

P:\GIS\Projects\1121\CS9586-PPP\7\XDF\Permits\CountyPermits\YorkCounty\SitePlan_Rev6

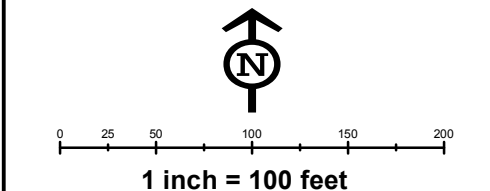
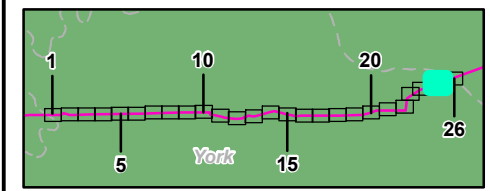


Stream S-H56, Perennial
 UNT to Susquehanna River
 Chapter 93: WWF, MF
 Coordinates: 40.1982, -76.8020
 Stream Impact: 2,590ft² E&S Sheet: ES-4.20
 Perm. Floodway Impact: 0.215 acres
 Temp. Floodway Impact: 0.120 acres
 Crossing Type: HDD/Clearing LOD
 OHW Width: 37 Permit: Individual

Stream S-H57, Perennial
 UNT to Susquehanna River
 Chapter 93: Drains to WWF, MF
 Coordinates: 40.1975, -76.8021
 Stream Impact: 0ft² E&S Sheet: ES-4.20
 Perm. Floodway Impact: 0.215 acres
 Temp. Floodway Impact: 0.120 acres
 Crossing Type: Floodway Only
 OHW Width: 5 Permit: Individual

ATWS for equipment storage
 and staging area for HDD.

- Legend**
- Sheet Boundary
 - PPP 1
 - PPP 2
 - PPP 1, Bore
 - PPP 1, HDD
 - PPP 2, Bore
 - PPP 2, HDD
 - Pullback String
 - Permanent Easement (no surface disturbance)
 - Permanent ROW
 - Temporary ROW
 - ATWS
 - Permanent Access Road
 - Temporary Access Road
 - ROW-Travel LOD
 - ROW-Travel and Clearing LOD
 - Existing Block Valve
 - New Block Valve
 - Block Valve Setting LOD
 - Station LOD
 - Bore Pits
 - PEM Wetland
 - PFO Wetland
 - PSS Wetland
 - Pond
 - Ephemeral Stream
 - Intermittent Stream
 - Perennial Stream
 - Chapter 105 Floodway
 - Waived Floodway
 - Ch. 106 Floodplain Fringe



Site Plan for the Sunoco
 Pennsylvania Pipeline Project,
 York County, PA.
 Sheet 25 of 26

Prepared By: **TETRA TECH** Date: **02/2017**

Base Map: SPLP 2014-2016, Roads from NRCS Geo-spatial Data Giveaway, 100-Year Floodplain from FEMA NFHL, downloaded 9/2016. Aquatics, TT 2013-2016.
 Coordinate System: NAD 83 Stateplane, PA South, Feet

P:\GIS\Projects\1121C5958-PPP\10\XDR\Fermitis\CountyPermits\YorkCounty\SitePlan_Rev0

Impacts to the Susquehanna River are presented within the Dauphin County application E22-619.

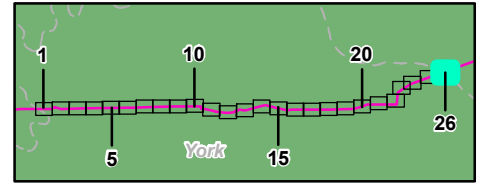
Lower Swatara Township
DAUPHIN COUNTY

Fairview Township
YORK COUNTY

Stream S-A22, Ch. 106 area
Susquehanna River
Coordinates: 40.1964, -76.7991
Perm. Floodplain Impact: 0.032 acres
Temp. Floodplain Impact: 0 acres
Crossing Type: HDD/Floodplain Crossing

Wetland BB1, PEM
HUC12: 020503051011
Coordinates: 40.1990, -76.7988
Perm. Impact: 0.002 acres
Temp. Impact: 0 acres
Crossing Type: HDD
E&S Sheet: ES-4.01 Permit: Individual

- Legend**
- Sheet Boundary
 - PPP 1
 - PPP 2
 - PPP 1, Bore
 - PPP 1, HDD
 - PPP 2, Bore
 - PPP 2, HDD
 - Pullback String
 - Permanent Easement (no surface disturbance)
 - Permanent ROW
 - Temporary ROW
 - ATWS
 - Permanent Access Road
 - Temporary Access Road
 - ROW-Travel LOD
 - ROW-Travel and Clearing LOD
 - Existing Block Valve
 - New Block Valve
 - Block Valve Setting LOD
 - Station LOD
 - Bore Pits
 - PEM Wetland
 - PFO Wetland
 - PSS Wetland
 - Pond
 - Ephemeral Stream
 - Intermittent Stream
 - Perennial Stream
 - Chapter 105 Floodway
 - Waived Floodway
 - Ch. 106 Floodplain Fringe



0 25 50 100 150 200

1 inch = 100 feet

Site Plan for the Sunoco
Pennsylvania Pipeline Project,
York County, PA.
Sheet 26 of 26

Prepared By:	Date:
TETRA TECH	02/2017

Base Map: SPLP 2014-2016, Roads from NRCS Geo-spatial Data Giveaway, 100-Year Floodplain from FEMA NFHL, downloaded 9/2016. Aquatics, TT 2013-2016.

Coordinate System: NAD 83 Stateplane, PA South, Feet

P:\GIS\Projects\1121C5958-PPP\York\Permits\YorkCounty\SitePlan_Rev0