

HDD PA-CH-0111.0000 (W-C43)

After consideration of the all data points, including the sensitivity of the area and geotechnical results, the preliminary design of this drill has been found to be adequate for safe installation and operation (see Attachment A for the drill design and the geotechnical investigation report).

The drill would enter/exit 1,000 feet from the edge of the western most boundary of wetland W-C43PEM/PFO and would enter/exit 110 feet from the eastern most edge of wetland W-C43PEM/PFO. The drill would pass 80 feet under the western most boundary of wetland W- C43PEM/PFO and 10 feet under the eastern most boundary of W-C43PEM/PFO. Using the results of the geotechnical investigation, as well as several other data points, the entry/exit, angles, and depths have been configured to pass through the best substrates while maintaining pipe integrity (e.g., no large bends). The majority of the substrate that will be passed through is estimated to be a silty sand or clay at either ends of the wetland and a graphitic felsic gneiss beneath the central portion of the wetland. Given the design, the threat of inadvertent return has been reduced to the maximum extent practicable. Implementing this design, along with adherence to the *Pennsylvania Pipeline Project Inadvertent Return Contingency Plan – with Special Bog Turtle Procedures* will ensure the bog turtle is not impacted as result of this HDD.

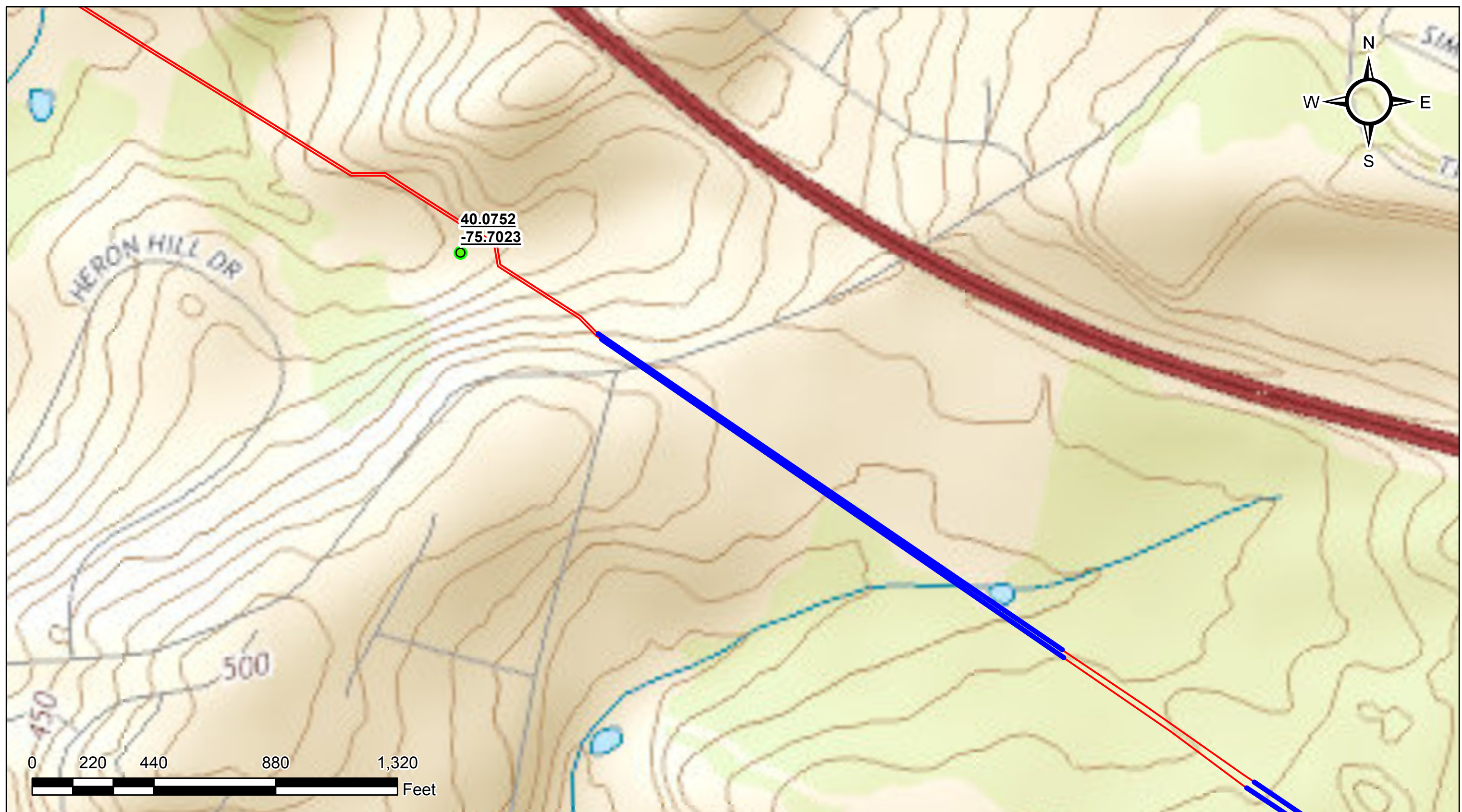
The previous IR consisted of two returns, both on the southeast side of wetland W41. The first inadvertent return was approximately 40 gallons in the wetland area southwest of the HDD path. The second inadvertent return was approximately 500 gallons on the border of the wetland, partially within, northeast of the HDD path.

Clean up involved removal of Bentonite manually, retrieving as much of the material as possible. The approved clean up plan manually removed approximately 30 gallons of material from both IRs. Recovered material was recycled and returned to the equipment. There were no lasting impacts from this spill. For this reason, we recommend additional inspection while the drill is being performed.

HDD PA-CH-0124.0000 (W-C37)

After consideration of the all data points, including the sensitivity of the area and geotechnical results, the preliminary design of this drill has been found to be adequate for safe installation and operation (see Attachment A for the drill design and the geotechnical investigation report).

The Drill is offset to the south of Wetland H1PEM/PFO. The drill would enter/exit 2,500 feet from the edge of the western most boundary of the wetland H1PEM/PFO and would enter/exit 200 feet from the eastern most edge of wetland C37PEM/PFO. The drill would pass 11 feet to the south of Wetland H1PEM/PFO and at a depth of 86 feet at its closest point and 20 feet under the eastern most boundary of Wetland C37PEM/PFO. Using the results of the geotechnical investigation, as well as several other data points, the entry/exit, angles, and depths have been configured to pass through the best substrates while maintaining pipe integrity (e.g., no large bends). The majority of the substrate that will be passed through is estimated to be a silty sand at either ends of the wetland and gneiss bedrock beneath the central portion of the wetland. Given the design, the threat of inadvertent return has been reduced to the maximum extent practicable. Implementing this design, along with adherence to the *Pennsylvania Pipeline Project Inadvertent Return Contingency Plan – with Special Bog Turtle Procedures* will ensure the bog turtle is not impacted as result of this HDD.




Legend

- HDD Path
- Proposed Centerline

DRAWN	CHECKED	APPROVED	DATE	REV NO.	DESCRIPTION
AW	RB	RB	11/21/16	A	ISSUED FOR REVIEW

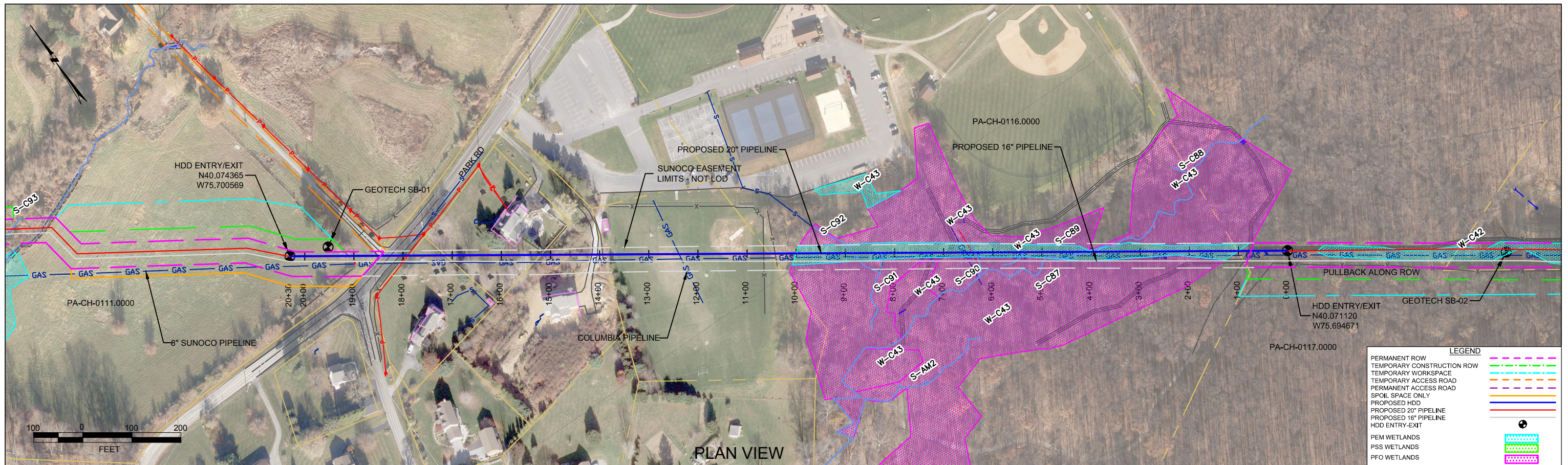
PREPARED BY:
TETRA
 (303) 79


Sunoco Pipeline L.P.

PENNSYLVANIA PIPELINE PROJECT
INADVERTENT RETURN ASSESSMENTS

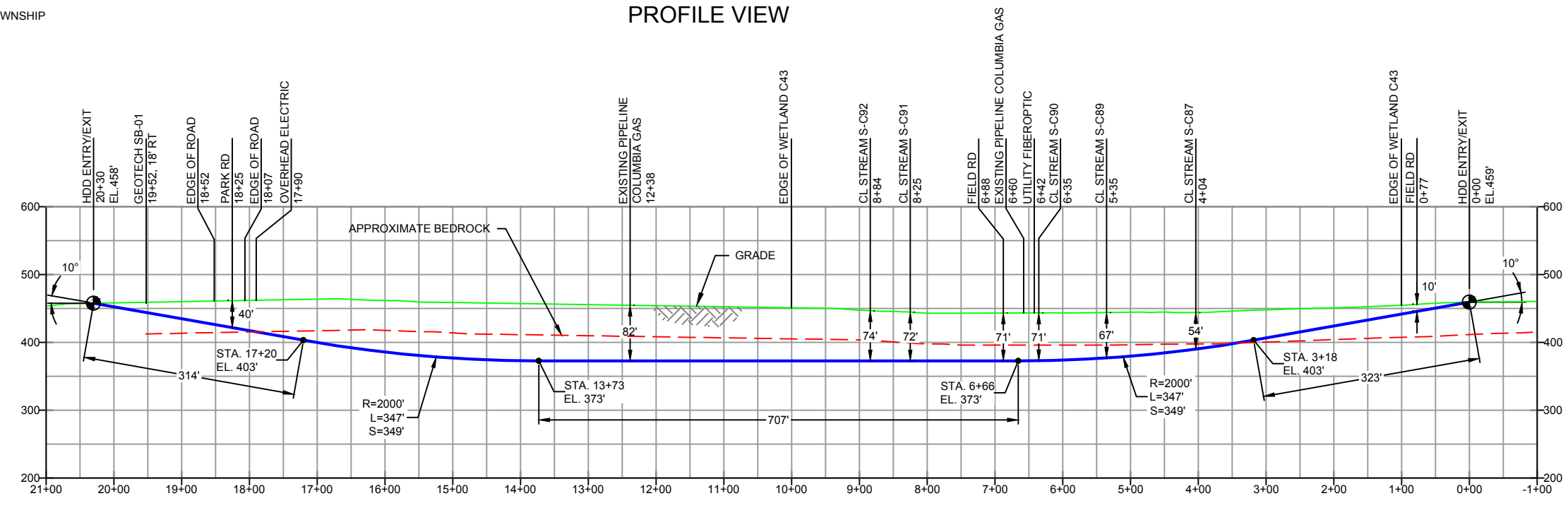
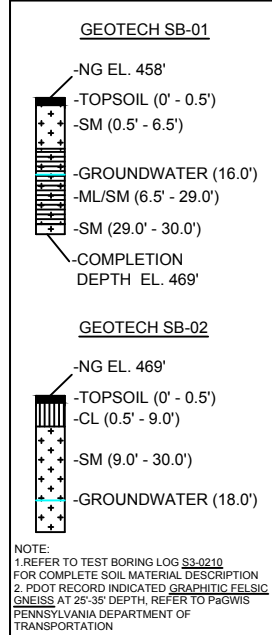
DRAWN: AW	CHECKED: RB
DATE: 11/21/16	SCALE: AS SHOWN

PA-CH-0111-RD-HDD



PLAN VIEW

CHESTER COUNTY, PENNSYLVANIA - UWCHLAN TOWNSHIP
S3-0300



PROFILE VIEW

- DESIGN AND CONSTRUCTION:
- CONTRACTOR SHALL FIELD VERIFY DEPTH OF ALL EXISTING UTILITIES SHOWN OR NOT SHOWN ON THIS DRAWING.
 - THE MINIMUM SEPARATION DISTANCE FROM EXISTING SUBSURFACE UTILITIES SHALL NOT BE LESS THAN 10 FEET AS MEASURED FROM THE OUTSIDE EDGE OF THE UTILITY TO OUTSIDE OF PROPOSED PIPELINE.
 - DESIGNED IN ACCORDANCE WITH CFR 49 195 & ASME B31.4
 - CROSSING PIPE SPECIFICATION:
HDD HORZ. LENGTH (L): 2030'
HDD PIPE LENGTH (S): 2043'
20" x 0.456" W.T., X-65, API5L, PSL2, ERW, BFW
COATING: 14-16 MILS FBE WITH 30-35 MIL ARO (POWERCRETE OR ENGINEER APPROVED EQUAL)
 - INTERNAL DESIGN PRESSURE 1480 PSIG (SEAM FACTOR 1.0, DESIGN FACTOR 0.50).
 - INSTALLATION METHOD: HORIZONTAL DIRECTIONAL DRILL (HDD).
 - PIPELINE WARNING MARKERS SHALL BE INSTALLED ON BOTH SIDES OF ALL ROAD, RAILWAY, AND STREAM CROSSINGS.
 - CARRIER PIPE NOT ENCASED.
 - PIPE / AMBIENT TEMPERATURE MUST BE NO LESS THAN 30°F DURING PULLBACK WITHOUT PRIOR WRITTEN APPROVAL FROM THE ENGINEER.
 - CONDUCT 4-HOUR PRE-INSTALLATION HYDROTEST OF HDD PIPE STRING TO MINIMUM 1850 PSIG.
 - SEE SUNOCO PENNSYLVANIA PIPELINE PROJECT ESRI WEBMAP FOR ACCESS ROAD ALIGNMENT.
 - SUNOCO PIPELINE, L.P.'S HORIZONTAL DIRECTIONAL DRILL INADVERTENT RETURN CONTINGENCY PLAN WILL BE IMPLEMENTED AT ALL TIMES.
 - SUNOCO PIPELINE, L.P.'S EROSION AND SEDIMENTATION CONTROL PLAN WILL BE IMPLEMENTED AT ALL TIMES.

NOTES

- ALL COORDINATES SHOWN ARE IN LATITUDE AND LONGITUDE. ALL MSL ELEVATIONS ARE NAD83
- STATIONING IS BASED ON HORIZONTAL DISTANCES
- ROONEY ENGINEERING, INC. AND SUNOCO PIPELINE, LP ARE NOT RESPONSIBLE FOR LOCATION OF FOREIGN UTILITIES SHOWN IN PLOT PLAN OR PROFILE. THE INFORMATION SHOWN HEREON IS FURNISHED WITHOUT LIABILITY ON THE PART OF ROONEY ENGINEERING, INC. AND SUNOCO PIPELINE, LP. FOR ANY DAMAGES RESULTING FROM ERRORS OR OMISSIONS THEREIN.
- CONTRACTOR IS RESPONSIBLE FOR LOCATING ALL UTILITIES. CONTACT ONE CALL AT 811 PRIOR TO DIGGING.
- SUNOCO EMERGENCY HOTLINE NUMBER IS #1-800-786-7440.

REF. DRAWING		REVISIONS	
ES-6.31	TO ES-6.32	EROSION & SEDIMENT PLAN	
SHEET 18	TO SHEET 19	AERIAL SITE PLAN	
		EP2	REVISED PER PADEP COMMENTS RECEIVED 09-06-16
		EP1	REVISED PER PADEP COMMENTS
		EP	
		0	ISSUED FOR CONSTRUCTION
DWG NO	DWG NO	DESCRIPTION	DESCRIPTION

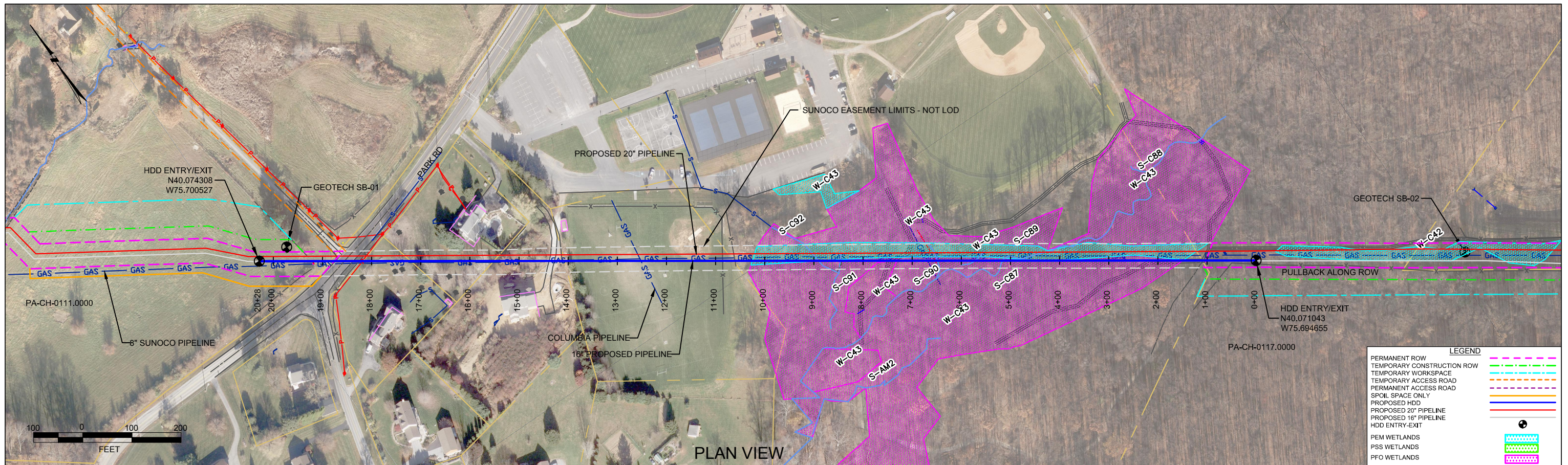
Sunoco Logistics Partners L.P.

TETRA TECH ROONEY
(303) 792-5911

SUNOCO PIPELINE, L.P.

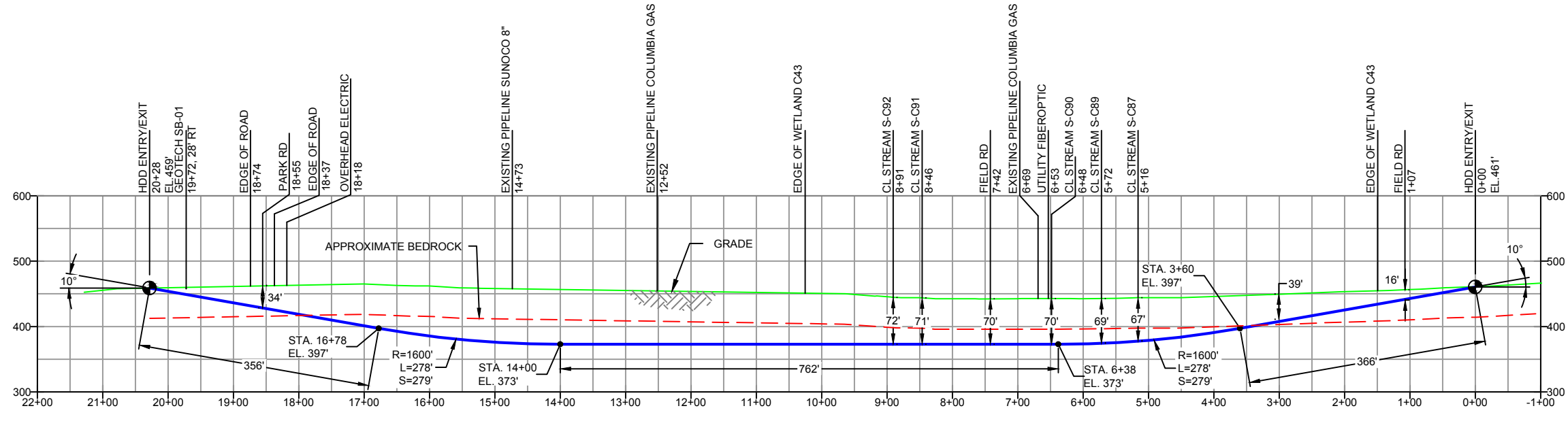
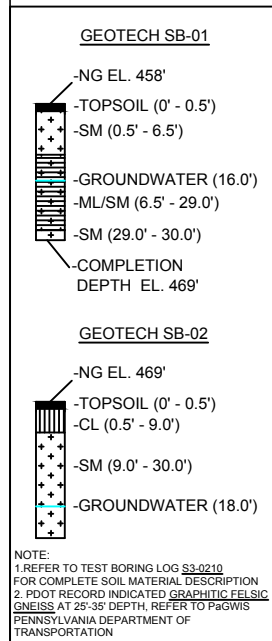
20-INCH HORIZONTAL DIRECTIONAL DRILL
PARK RD
PENNSYLVANIA PIPELINE PROJECT

SCALE: 1"=200' DWG. NO. PA-CH-0111.0000-RD



CHESTER COUNTY, PENNSYLVANIA - UWCHLAN TOWNSHIP
S3-0300-16

PROFILE VIEW



- DESIGN AND CONSTRUCTION:
- CONTRACTOR SHALL FIELD VERIFY DEPTH OF ALL EXISTING UTILITIES SHOWN OR NOT SHOWN ON THIS DRAWING.
 - THE MINIMUM SEPARATION DISTANCE FROM EXISTING SUBSURFACE UTILITIES SHALL NOT BE LESS THAN 10 FEET AS MEASURED FROM THE OUTSIDE EDGE OF THE UTILITY TO OUTSIDE OF PROPOSED PIPELINE.
 - DESIGNED IN ACCORDANCE WITH CFR 49 195 & ASME B31.4
 - CROSSING PIPE SPECIFICATION:
HDD HORZ. LENGTH (L-): 2028'
HDD PIPE LENGTH (S-): 2042'
16" x 0.438" W.T., X-70, API5L, PSL2, ERW, BFW
COATING: 14-16 MILS FBE WITH 30-35 MIL ARO (POWERCRETE R95)
 - INTERNAL DESIGN PRESSURE 1480 PSIG (SEAM FACTOR 1.0, DESIGN FACTOR 0.50).
 - INSTALLATION METHOD: HORIZONTAL DIRECTIONAL DRILL (HDD).
 - PIPELINE WARNING MARKERS SHALL BE INSTALLED ON BOTH SIDES OF ALL ROAD, RAILWAY, AND STREAM CROSSINGS.
 - CARRIER PIPE NOT ENCASED.
 - PIPE / AMBIENT TEMPERATURE MUST BE NO LESS THAN 30°F DURING PULLBACK WITHOUT PRIOR WRITTEN APPROVAL FROM THE ENGINEER.
 - CONDUCT 4-HOUR PRE-INSTALLATION HYDROTEST OF HDD PIPE STRING TO MINIMUM 1850 PSIG.
 - SEE SUNOCO PENNSYLVANIA PIPELINE PROJECT ESRI WEBMAP FOR ACCESS ROAD ALIGNMENT.
 - SUNOCO PIPELINE, L.P.'S HORIZONTAL DIRECTIONAL DRILL INADVERTENT RETURN CONTINGENCY PLAN WILL BE IMPLEMENTED AT ALL TIMES.
 - SUNOCO PIPELINE, L.P.'S EROSION AND SEDIMENTATION CONTROL PLAN WILL BE IMPLEMENTED AT ALL TIMES.

NOTES

- ALL COORDINATES SHOWN ARE IN LATITUDE AND LONGITUDE. ALL MSL ELEVATIONS ARE NAD83
- STATIONING IS BASED ON HORIZONTAL DISTANCES
- ROONEY ENGINEERING, INC. AND SUNOCO PIPELINE, LP ARE NOT RESPONSIBLE FOR LOCATION OF FOREIGN UTILITIES SHOWN IN PLOT PLAN OR PROFILE. THE INFORMATION SHOWN HEREON IS FURNISHED WITHOUT LIABILITY ON THE PART OF ROONEY ENGINEERING, INC. AND SUNOCO PIPELINE, LP. FOR ANY DAMAGES RESULTING FROM ERRORS OR OMISSIONS THEREIN.
- CONTRACTOR IS RESPONSIBLE FOR LOCATING ALL UTILITIES. CONTACT ONE CALL AT 811 PRIOR TO DIGGING.
- SUNOCO EMERGENCY HOTLINE NUMBER IS #1-800-786-7440.

REF. DRAWING		REVISIONS	
DWG NO	DWG NO	NO.	DESCRIPTION
ES-6.31	TO ES-6.32	EROSION & SEDIMENT PLAN	
SHEET 18	TO SHEET 19	AERIAL SITE PLAN	
		EP2	REVISED PER PADEP COMMENTS RECEIVED 09-06-16
		EP1	REVISED PER PADEP COMMENTS
		EP	
		0	ISSUED FOR CONSTRUCTION

**Sunoco Logistics
Partners L.P.**

SUNOCO PIPELINE, L.P.

16-INCH HORIZONTAL DIRECTIONAL DRILL
PARK ROAD
PENNSYLVANIA PIPELINE PROJECT


TETRA TECH ROONEY
(303) 792-5911

SCALE: 1"=200'

DWG. NO. PA-CH-0111.0000-RD-16



LEGEND:

 Geotechnical Soil Boring (SB) Locations



GEOTECHNICAL BORING LOCATIONS
HDD S3-0300
CHESTER COUNTY, UPPER UWCHLAN TOWNSHIP, PA
SUNOCO PENNSYLVANIA PIPELINE PROJECT

**GEOTECHNICAL LABORATORY TESTING SUMMARY
SUNOCO PENNSYLVANIA PIPELINE PROJECT
HDD S3-0300**

HDD No.	Test Boring No.	Sample No.	Depth of Sample (ft.)		Water Content, % (ASTM D2216)	Percent Silts/Clays, % (ASTM D1140)	Atterburg Limits (ASTM D4318)			USCS Classif. (ASTM D2487)
			From	To			Liquid Limit, %	Plastic Limit, %	Plasticity Index, %	
S3-0300	SB-01	2	8.0	10.0	12.9	21.6	-	-	-	-
		3	13.0	15.0	25.0	50.8	-	-	-	-
		4	18.0	20.0	34.7	51.9	43	33	10	ML/SM
		5	23.0	25.0	38.7	50.0	-	-	-	-
		6	28.0	30.0	13.5	24.6	NV	NP	NP	SM
	SB-02	2	8.0	10.0	23.5	20.5	-	-	-	-
		3	13.0	15.0	31.7	22.6	-	-	-	-
		4	18.0	20.0	41.7	33.1	30	25	5	SM
		5	23.0	25.0	32.2	28.7	-	-	-	-
		6	28.0	30.0	23.4	24.2	-	-	-	-

Notes:

- 1) Sample depths based on feet below grade at time of exploration.

**REGIONAL GEOLOGY SUMMARY
SUNOCO PENNSYLVANIA PIPELINE PROJECT
HDD S3-0300**

HDD No.	BORING NO.	REGIONAL GEOLOGY DESCRIPTION	GENERAL TOPOGRAPHIC SETTING	BEDROCK FORMATION	GENERAL ROCK TYPE	APPROX MAX FM THICKNESS (FT)	DEPTH TO ROCK (Ft bgs) based on nearby well drilling logs	NOTES / COMMENTS
S3-0300	SB-01	Graphitic felsic gneiss - Includes Pickering Gneiss and small areas of marble; dominantly quartz and feldspar with varying amounts of graphite and various metamorphic minerals; medium grained, light to dark gray and greenish gray; sedimentary origin.	Gently sloping to the north	Graphitic felsic gneiss (PreCambrian)	Graphitic gneiss	Unknown	Approximately 25 ft bgs, see notes	Of the 14 well records within 0.25 miles of the site, only one had a recorded bedrock depth. Given the similar geology, bedrock depth is likely to be similar to other locations in this formation
	Generally level, slightly sloping to the west		Of the 23 well records within 0.5 miles of the site, only one had a recorded bedrock depth. Given the similar geology, bedrock depth is likely to be similar to other locations in this formation					

Note : Source of well log data - <http://www.dcnr.state.pa.us/topogeo/groundwater/pagwis/records/index.htm>. All other sources as referenced in comments section.

FIELD DESCRIPTION AND LOGGING SYSTEM FOR SOIL EXPLORATION

GRANULAR SOILS

(Sand, Gravel & Combinations)

<u>Density</u>	<u>N (blows)*</u>
Very Loose	5 or less
Loose	6 to 10
Medium Dense	11 to 30
Dense	31 to 50
Very Dense	51 or more

Particle Size Identification

Boulders	8 in. diameter or more
Cobbles	3 to 8 in. diameter
Gravel	Coarse (C) 3 in. to ¾ in. sieve
	Fine (F) ¾ in. to No. 4 sieve
Sand	Coarse (C) No. 4 to No. 10 sieve (4.75mm-2.00mm)
	Medium (M) No. 10 to No. 40 sieve (2.00mm – 0.425mm)
	Fine (F) No. 40 to No. 200 sieve (0.425 – 0.074mm)
Silt/Clay	Less Than a No. 200 sieve (<0.074mm)

Relative Proportions

<u>Description Term</u>	<u>Percent</u>
Trace	1 - 10
Little	11 - 20
Some	21 - 35
And	36 - 50

COHESIVE SOILS

(Silt, Clay & Combinations)

<u>Consistency</u>	<u>N (blows)*</u>
Very Soft	3 or less
Soft	4 to 5
Medium Stiff	6 to 10
Stiff	11 to 15
Very Stiff	16 to 30
Hard	31 or more

Plasticity

<u>Degree of Plasticity</u>	<u>Plasticity Index</u>
None to Slight	0 - 4
Slight	5 - 7
Medium	8 - 22
High to Very High	> 22

ROCK

(Rock Cores)

<u>Rock Quality Designation (RQD), %</u>	<u>Rock Quality Description</u>
0-25	Very Poor
25-50	Poor
50-75	Fair
75-90	Good
90-100	Excellent

***N - Standard Penetration Resistance.** Driving a 2.0" O.D., 1-3/8" I.D. sampler a distance of 18 inches into undisturbed soil with a 140 pound hammer free falling a distance of 30.0 inches. The number of hammer blows to drive the sampler through each 6 inch interval is recorded; the number of blows required to drive the sampler through the final 12 inch interval is termed the Standard Penetration Resistance (SPR) N-value. For example, blow counts of 6/8/9 (through three 6-inch intervals) results in an SPR N-value of 17 (8+9).

Groundwater observations were made at the times indicated. Groundwater elevations fluctuate throughout a given year, depending on actual field porosity and variations in seasonal and annual precipitation.

UNIFIED SOIL CLASSIFICATION SYSTEM [Casagrande (1948)]

Major Divisions		Group Symbols	Typical Descriptions	Laboratory Classifications			
Coarse Grained Soils (More than half of material is larger than No. 200 sieve)	Gravels (More than half of coarse fraction is larger than No. 4 sieve size)	Clean gravel (Little or no fines)	GW	Well-graded gravels, gravel-sand mixtures, little or no fines	$C_u = \frac{D_{60}}{D_{10}}$ greater than 4; $C_c = \frac{(D_{30})^2}{D_{10} \times D_{60}}$ between 1 and 3 Not meeting C_u or C_c requirements for GW		
			GP	Poorly graded gravels, gravel-sand mixtures, little or no fines			
		Gravel with fines (Appreciable amount of fines)	GM	Silty gravels, gravel-sand-silt mixtures	Atterberg limits below A Line or I_p less than 4	Limits plotting in hatched zone with I_p between 4 and 7 are borderline cases requiring use of dual symbols	
			GC	Clayey gravels, gravel-sand-clay mixtures	Atterberg limits above A line with I_p greater than 7		
	Sands (More than half of coarse fraction is smaller than No. 4 Sieve)	Clean sands (Little or no fines)	SW	Well graded sands, gravelly sands, little or no fines	$C_u = \frac{D_{60}}{D_{10}}$ greater than 6; $C_c = \frac{(D_{30})^2}{D_{10} \times D_{60}}$ between 1 and 3 Not meeting C_u or C_c requirements for SW		
			SP	Poorly graded sands, gravelly sands, little or no fines			
		Sands with fines (Appreciable amount of fines)	SM	Silty sands, sand-silt mixtures	Atterberg limits below A Line or I_p less than 4	Limits Plotting in hatched zone with I_p between 4 and 7 are borderline cases requiring use of dual symbols	
			SC	Clayey sands, sand-clay mixtures	Atterberg limits above A line with I_p greater than 7		
		Determine Percentage of sand and gravel from grain size curve. Depending on Percentage of fines (fraction smaller than No. 200 sieve), coarse-grained soils are classified as follows: Less than 5 percent GW, GP, SW, SP More than 12 percent GM, GC, SM, SC 5 to 12 percent Borderline cases requiring dual symbols ⁽¹⁾					
		Major Divisions		Group Symbols	Typical Descriptions	For soils plotting nearly on A line use dual symbols i.e., $I_p = 29.5$, $w_L = 60$ gives CH-MH. When w_L is near 50 use CL-CH or ML-MH. Take near as ± 2 percent.	
Fine-grained soils (More than half of material is smaller than No. 200 sieve)	Silt and clays (Liquid limit less than 50)	ML	Inorganic silts and very fine sands, rock flour, silty or clayey fine sands, or clayey silts with slight plasticity				
		CL	Inorganic clays of low to medium plasticity, gravelly clays, sandy clays, silty clays, lean clays				
		OL	Organic silts and organic silty clays of low plasticity				
	Silt and Clays (Liquid limit greater than 50)	MH	Inorganic silts, micaceous or diatomaceous fine sandy or silty soils, elastic silts				
		CH	Inorganic clays of high plasticity, fat clays				
		OH	Organic clays of medium to high plasticity, organic silts				
	Highly organic soils	Pt	Peat and other highly organic soils				

(1) Borderline classifications, used for soils possessing characteristics of two groups, are designated by combinations of group symbols. For example: GW-GC. well-graded gravel-sand mixture with clay binder.