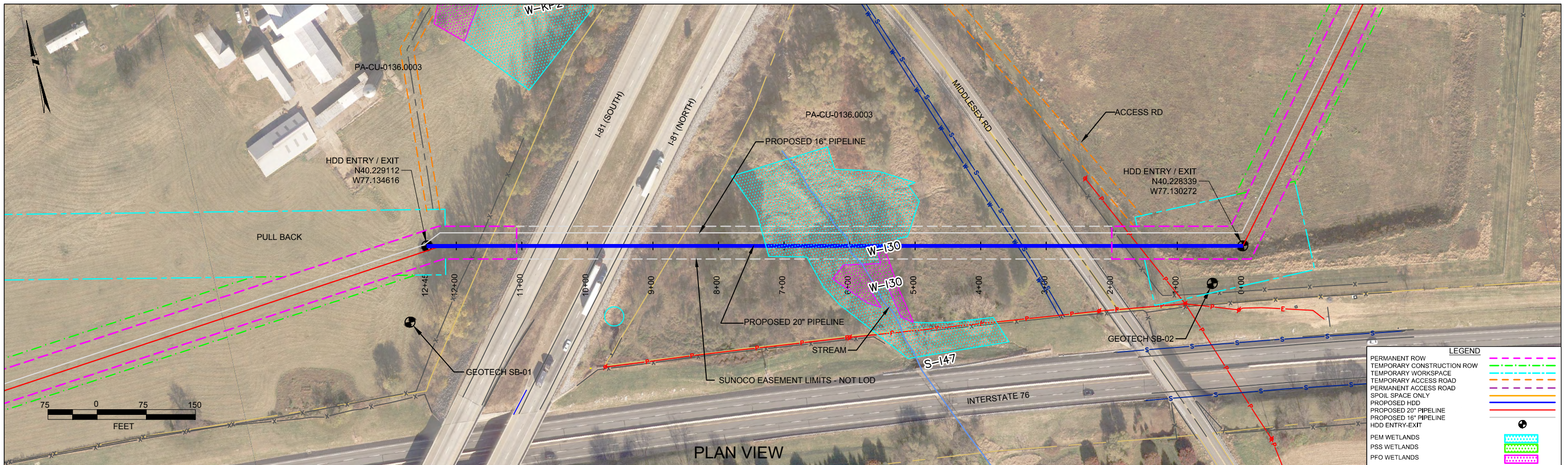


***HDD PA-CU-0136.0003-RD (PEM-I30, S-I47)***

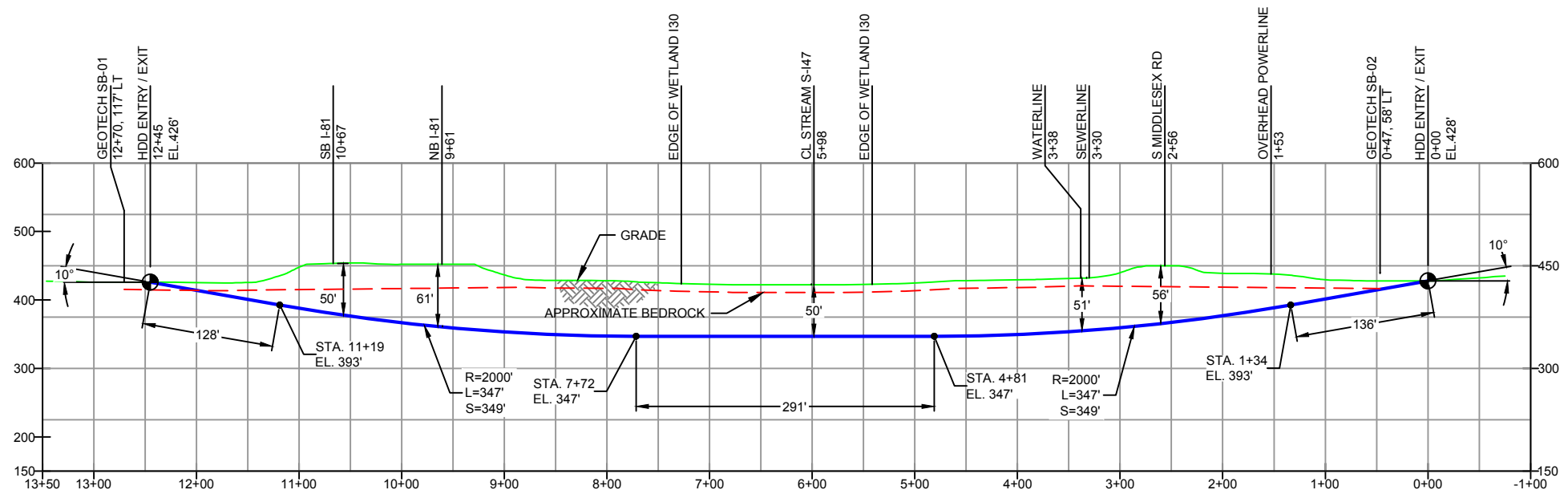
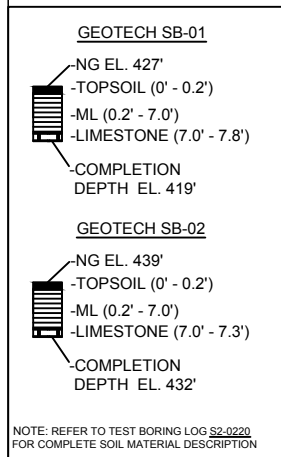
Given the design, the threat of inadvertent return has been reduced to the maximum extent practicable and in this case that threat is considered to be low. Implementing this design, along with adherence to the Pennsylvania Pipeline Project Inadvertent Return Contingency Plan will ensure inadvertent impacts, if they were to occur, are also minimized to the maximum extent.

The drill will enter/exit 130 feet from the western edge of Interstate 81 and enter/exit 920 feet from the eastern edge. The horizontal directional drill will enter/exit 500 feet from the western edge of Grassy Wetland I30 (PEM-I30) and enter/exit 550 feet from the eastern edge. The drill will enter/exit 620 feet from the western edge of stream I47 (S-I47) and enter/exit 600 feet from the eastern edge. The drill will finish passing under Middlesex Road, the western edge of which is 940 from the drill's western entrance/exit while the eastern edge is 240 feet from the eastern drill entrance/exit. The drill will pass at least 50 feet below each road and water body. The geotechnical results, as well as other data points, were used to determine the entry/exit angles, and depths to pass through the best substrates while maintaining the pipe integrity (e.g., no large bends). According to the geotechnical report primary substrate being drilled through is limestone with a thin layer of silt and fine sand above. The limestone is permeable but the drill is 50 feet below the wetland and stream so minimal inadvertent returns are anticipated. Additional inspection is recommended due to the limestone substrate to observe for inadvertent returns.



CUMBERLAND COUNTY, PENNSYLVANIA - MIDDLESEX TOWNSHIP  
S2-0220

PLAN VIEW  
PROFILE VIEW



DESIGN AND CONSTRUCTION:

- CONTRACTOR SHALL FIELD VERIFY DEPTH OF ALL EXISTING UTILITIES SHOWN OR NOT SHOWN ON THIS DRAWING.
- THE MINIMUM SEPARATION DISTANCE FROM EXISTING SUBSURFACE UTILITIES SHALL NOT BE LESS THAN 10 FEET AS MEASURED FROM THE OUTSIDE EDGE OF THE UTILITY TO OUTSIDE OF PROPOSED PIPELINE.
- DESIGNED IN ACCORDANCE WITH CFR 49 195 & ASME B31.4
- CROSSING PIPE SPECIFICATION:  
HDD HORZ. LENGTH (L=): 1245'  
HDD PIPE LENGTH (S=): 1253'  
20" x 0.456" W.T., X-65, API5L, PSL2, ERW, BFW  
COATING: 14-16 MILS FBE WITH 30-35 MIL ARO (POWERCRETE R95)
- INTERNAL DESIGN PRESSURE 1480 PSIG (SEAM FACTOR 1.0, DESIGN FACTOR 0.50).
- INSTALLATION METHOD: HORIZONTAL DIRECTIONAL DRILL (HDD).
- PIPELINE WARNING MARKERS SHALL BE INSTALLED ON BOTH SIDES OF ALL ROAD, RAILWAY, AND STREAM CROSSINGS.
- CARRIER PIPE NOT ENCASED.
- PIPE / AMBIENT TEMPERATURE MUST BE NO LESS THAN 30°F DURING PULLBACK WITHOUT PRIOR WRITTEN APPROVAL FROM THE ENGINEER.
- CONDUCT 4-HOUR PRE-INSTALLATION HYDROTEST OF HDD PIPE STRING TO MINIMUM 1850 PSIG.
- SEE SUNOCO PENNSYLVANIA PIPELINE PROJECT ESRI WEBMAP FOR ACCESS ROAD ALIGNMENT.
- SUNOCO PIPELINE, L.P.'S HORIZONTAL DIRECTIONAL DRILL INADVERTENT RETURN CONTINGENCY PLAN WILL BE IMPLEMENTED AT ALL TIMES.
- SUNOCO PIPELINE, L.P.'S EROSION AND SEDIMENTATION CONTROL PLAN WILL BE IMPLEMENTED AT ALL TIMES.

**NOTES**

- ALL COORDINATES SHOWN ARE IN LATITUDE AND LONGITUDE. ALL MSL ELEVATIONS ARE NAD83
- STATIONING IS BASED ON HORIZONTAL DISTANCES.
- ROONEY ENGINEERING, INC. AND SUNOCO PIPELINE, LP ARE NOT RESPONSIBLE FOR LOCATION OF FOREIGN UTILITIES SHOWN IN PLOT PLAN OR PROFILE. THE INFORMATION SHOWN HEREON IS FURNISHED WITHOUT LIABILITY ON THE PART OF ROONEY ENGINEERING, INC. AND SUNOCO PIPELINE, LP. FOR ANY DAMAGES RESULTING FROM ERRORS OR OMISSIONS THEREIN.
- CONTRACTOR IS RESPONSIBLE FOR LOCATING ALL UTILITIES. CONTACT ONE CALL AT 811 PRIOR TO DIGGING.
- SUNOCO EMERGENCY HOTLINE NUMBER IS #1-800-786-7440.

REF. DRAWING		REVISIONS		
ES-4.64	TO ES-4.65	EROSION & SEDIMENT PLAN	EP2 REVISED PER PADEP COMMENTS RECEIVED 09-06-16	
SHEET 37	TO SHEET 37	AERIAL SITE PLAN	EP1 REVISED PER PADEP COMMENTS	
			EP	
			C ADDED GEOTECH INFO	
			B ISSUED FOR BID	
			A ISSUED FOR REVIEW	
DWG NO	DWG NO	DESCRIPTION	NO.	DESCRIPTION

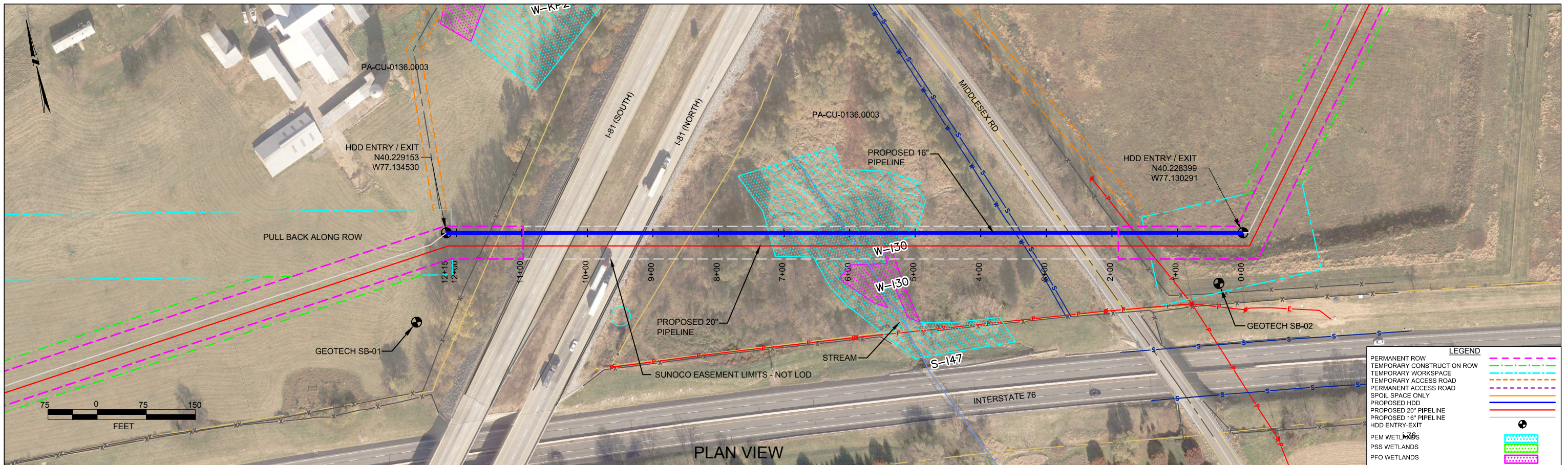
**Sunoco Logistics Partners L.P.**

**TETRA TECH ROONEY**  
(303) 792-5911

**SUNOCO PIPELINE, L.P.**

20-INCH HORIZONTAL DIRECTIONAL DRILL  
I-81  
PENNSYLVANIA PIPELINE PROJECT

SCALE: 1"=150'  
DWG. NO: PA-CU-0136.0003-RD



CUMBERLAND COUNTY, PENNSYLVANIA - MIDDLESEX TOWNSHIP  
S2-0220-16

PLAN VIEW  
PROFILE VIEW

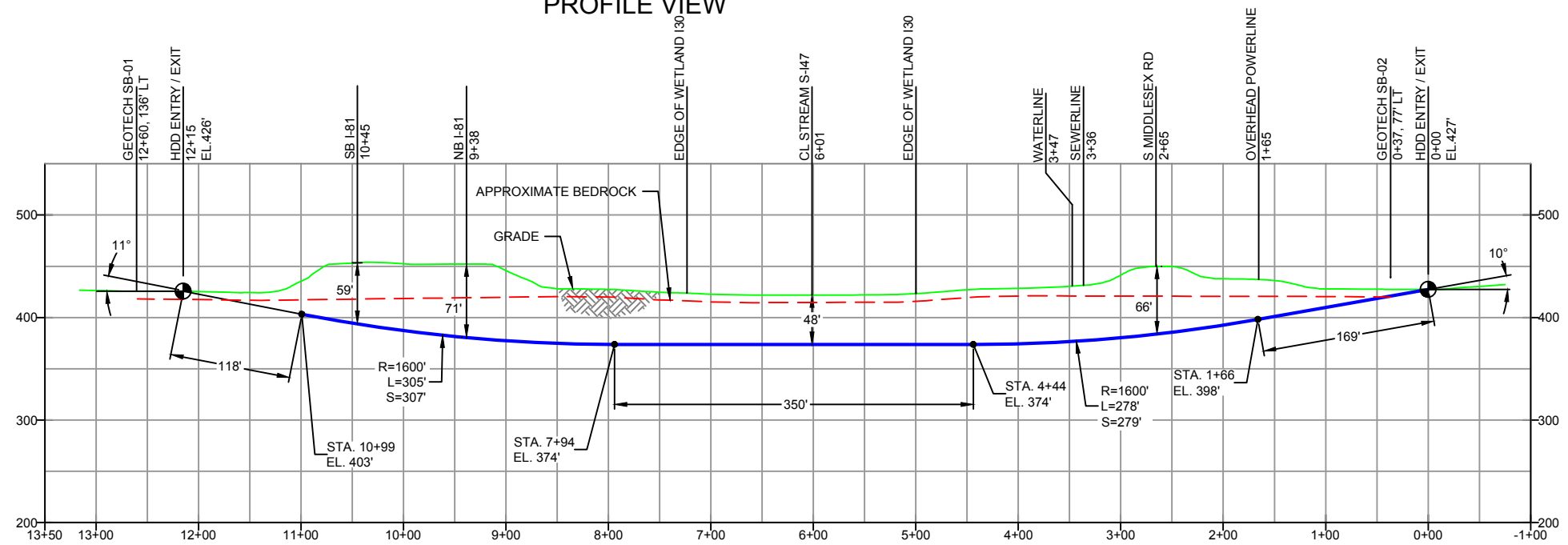
**GEOTECH SB-01**

- NG EL. 427'
- TOPSOIL (0' - 0.2')
- ML (0.2' - 7.0')
- LIMESTONE (7.0' - 7.8')
- COMPLETION DEPTH EL. 419'

**GEOTECH SB-02**

- NG EL. 439'
- TOPSOIL (0' - 0.2')
- ML (0.2' - 7.0')
- LIMESTONE (7.0' - 7.3')
- COMPLETION DEPTH EL. 432'

NOTE: REFER TO TEST BORING LOG S2-0220 FOR COMPLETE SOIL MATERIAL DESCRIPTION



DESIGN AND CONSTRUCTION:

- CONTRACTOR SHALL FIELD VERIFY DEPTH OF ALL EXISTING UTILITIES SHOWN OR NOT SHOWN ON THIS DRAWING.
- THE MINIMUM SEPARATION DISTANCE FROM EXISTING SUBSURFACE UTILITIES SHALL NOT BE LESS THAN 10 FEET AS MEASURED FROM THE OUTSIDE EDGE OF THE UTILITY TO OUTSIDE OF PROPOSED PIPELINE.
- DESIGNED IN ACCORDANCE WITH CFR 49 195 & ASME B31.4
- CROSSING PIPE SPECIFICATION:  
HDD HORZ. LENGTH (L=): 1215'  
HDD PIPE LENGTH (S=): 1223'  
16" x 0.438" W.T., X-70, API5L, PSL2, ERW, BFW  
COATING: 14-16 MILS FBE WITH 30-35 MIL ARO (POWERCRETE R95)
- INTERNAL DESIGN PRESSURE 1480 PSIG (SEAM FACTOR 1.0, DESIGN FACTOR 0.50).
- INSTALLATION METHOD: HORIZONTAL DIRECTIONAL DRILL (HDD).
- PIPELINE WARNING MARKERS SHALL BE INSTALLED ON BOTH SIDES OF ALL ROAD, RAILWAY, AND STREAM CROSSINGS.
- CARRIER PIPE NOT ENCASED.
- PIPE / AMBIENT TEMPERATURE MUST BE NO LESS THAN 30°F DURING PULLBACK WITHOUT PRIOR WRITTEN APPROVAL FROM THE ENGINEER.
- CONDUCT 4-HOUR PRE-INSTALLATION HYDROTEST OF HDD PIPE STRING TO MINIMUM 1850 PSIG.
- SEE SUNOCO PENNSYLVANIA PIPELINE PROJECT ESRI WEBMAP FOR ACCESS ROAD ALIGNMENT.
- SUNOCO PIPELINE, L.P.'S HORIZONTAL DIRECTIONAL DRILL INADVERTENT RETURN CONTINGENCY PLAN WILL BE IMPLEMENTED AT ALL TIMES.
- SUNOCO PIPELINE, L.P.'S EROSION AND SEDIMENTATION CONTROL PLAN WILL BE IMPLEMENTED AT ALL TIMES.

**NOTES**

- ALL COORDINATES SHOWN ARE IN LATITUDE AND LONGITUDE. ALL MSL ELEVATIONS ARE NAD83
- STATIONING IS BASED ON HORIZONTAL DISTANCES.
- ROONEY ENGINEERING, INC. AND SUNOCO PIPELINE, LP ARE NOT RESPONSIBLE FOR LOCATION OF FOREIGN UTILITIES SHOWN IN PLOT PLAN OR PROFILE. THE INFORMATION SHOWN HEREON IS FURNISHED WITHOUT LIABILITY ON THE PART OF ROONEY ENGINEERING, INC. AND SUNOCO PIPELINE, LP. FOR ANY DAMAGES RESULTING FROM ERRORS OR OMISSIONS THEREIN.
- CONTRACTOR IS RESPONSIBLE FOR LOCATING ALL UTILITIES. CONTACT ONE CALL AT 811 PRIOR TO DIGGING.
- SUNOCO EMERGENCY HOTLINE NUMBER IS #1-800-786-7440.

REF. DRAWING		REVISIONS	
DWG NO	DESCRIPTION	NO.	DESCRIPTION
ES-4.64	EROSION & SEDIMENT PLAN	EP2	REVISED PER PADEP COMMENTS RECEIVED 09-06-16
SHEET 37	AERIAL SITE PLAN	EP1	REVISED PER PADEP COMMENTS
		EP	
		B	ADDED GEOTECH INFO
		A	ISSUED FOR BID

**Sunoco Logistics  
Partners L.P.**

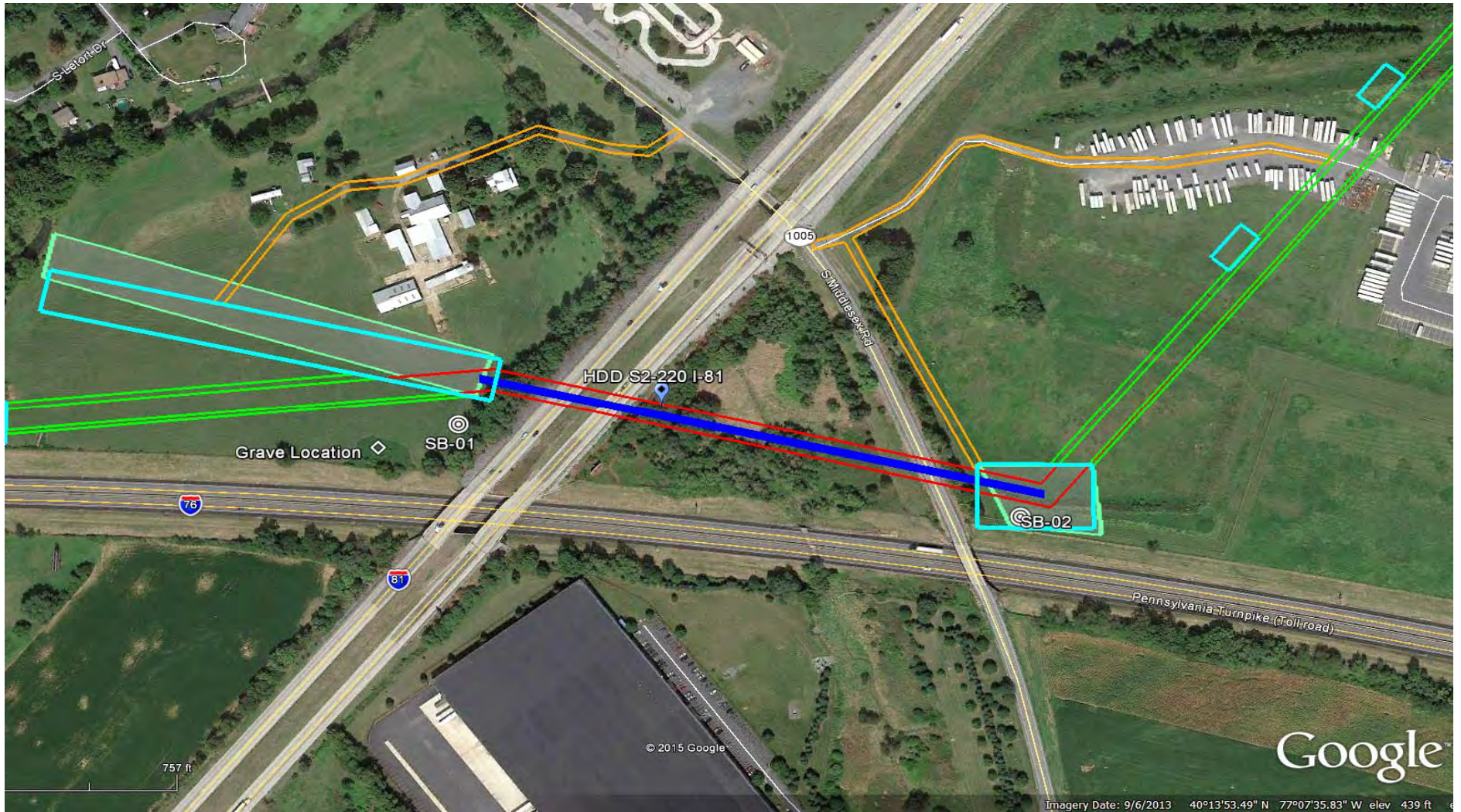
**SUNOCO PIPELINE, L.P.**

16-INCH HORIZONTAL DIRECTIONAL DRILL  
I-81  
PENNSYLVANIA PIPELINE PROJECT

**TETRA TECH ROONEY**  
(303) 792-5911

SCALE: 1"=150'

DWG. NO: PA-CU-0136.0003-RD-16



**LEGEND:**

☉ Geotechnical Soil Boring (SB) Locations



GEOTECHNICAL BORING LOCATIONS  
 HDD S2-0220  
 CUMBERLAND COUNTY, MIDDLESEX TOWNSHIP, PA  
 SUNOCO PENNSYLVANIA PIPELINE PROJECT



**TETRA TECH**

240 Continental Drive, Suite 200  
 Newark, Delaware 19713  
 302.738.7551  
 fax: 302.454.5988

**TEST BORING LOG**

Project Name:	SUNOCO PENNSYLVANIA PIPELINE PROJECT	Project No.:	103IP3406
Project Location:	S. MIDDLESEX ROAD, NEAR I-81 OVERPASS, CARLISLE, PA	Page 1 of 1	
HDD No.:	S2-0220	Dates(s) Drilled:	01-26-15
Boring No.:	SB-01	Inspector:	E. WATT
Drilling Contractor:	HAD DRILLING	Drilling Method:	SPT - ASTM D1586
		Driller:	S. HOFFER
		Groundwater Depth (ft):	NOT ENCOUNTERED
		Total Depth (ft):	17.3

Sample No.	Sample Depth (ft)		Strata Depth (ft)		Recov. (ft)	Strata (USCS)	Description of Materials	6" Increment Blows *				N	
	From	To	From	To									
			0.0	0.2			TOPSOIL (2")						
1**	3.0	5.0	0.2		2	ML	MOIST BROWN SILT AND FINE SAND.	2	5	5	3	10	
				7.0									
2**	7.5	7.8	7.5	7.8	3		LIMESTONE GRAVEL.	50/4"					
							<u>ROCK CORING</u>						
RUN 1	12.3	17.3	12.3	17.3	8		8" RECOVERY, GRAY LIMESTONE WITH CALCITE DEPOSTS. USED APPROX. 600 GALLONS OF WATER FOR 5' RUN, MOSTLY SOIL WASHOUT. AFTER RETRIEVING CORE BARRELL, UNABLE TO ADVANCE MEASURING TAPE BEYOND BOTTOM OF AUGERS. ALSO UNABLE TO LOWER CORE BARREL AND CORING RODS BEYOND BOTTOM OF AUGERS. ABANDONED FURTHER CORING EFFORT.						
							REFUSAL MATERIAL IS LIKELY A RESULT OF BOULDERY SUBSURFACE CONDITIONS.						
							**BORING ATTEMPTS: INITIALLY ENCOUNTERED CONCRETE AT 2' IN TWO BORING ATTEMPTS. OFF-SET TWICE MORE AND WAS ABLE TO ADVANCE PAST 2', DEEPEST PENETRATION TO AUGER REFUSAL WAS 7.5'. OFF-SET ONCE AGAIN AND AUGERED TO REFUSAL AT 12.3'. THEN ATTEMPTED ROCK CORE.						

Notes/Comments:  
Pocket Pentrometer Testing GRAVE SITE OBSERVED ON PROPERTY.  
 S1: 1.0 TSF  
 S2: 2.75 TSF

Strata (USCS) Designations are approximated based on visual review, except where indicated in Description of Materials.

\* Number of blows of 140 lb. Hammer dropped 30 in. required to drive 2 in. split-spoon sampler in 6 in. increments.  
 N: Number of blows to drive spoon from 6" to 18" interval.



**TETRA TECH**

240 Continental Drive, Suite 200  
 Newark, Delaware 19713  
 302.738.7551  
 fax: 302.454.5988

**TEST BORING LOG**

Project Name:	SUNOCO PENNSYLVANIA PIPELINE PROJECT	Project No.:	103IP3406
Project Location:	ROADWAY DRIVE, CARLISLE, PA	Page 1 of 1	
HDD No.:	S2-0220	Dates(s) Drilled:	01-26-15
Boring No.:	SB-02	Inspector:	E. WATT
Drilling Contractor:	HAD DRILLING	Drilling Method:	SPT - ASTM D1586
		Driller:	S. HOFFER
		Groundwater Depth (ft):	NOT ENCOUNTERED
		Total Depth (ft):	7.5

Sample No.	Sample Depth (ft)		Strata Depth (ft)		Recov. (in)	Strata (USCS)	Description of Materials	6" Increment Blows *				N	
	From	To	From	To									
			0.0	0.2			TOPSOIL (2")						
1	3.0	5.0	0.2		15	ML	ORANGE BROWN SILT, TRACE LIMESTONE FRAGMENTS. (USCS: ML).	1	3	7	9	10	
2	7.0	7.3	7.0	7.3	3		LIMESTONE FRAGMENTS MIXED WITH ORANGE BROWN SILT.	50/3"					
							AUGER REFUSAL AT 7.0'. OFF-SET 25' EAST AND CONTINUOUSLY AUGERED TO REFUSAL AT 7.5'. OFF-SET ONE MORE TIME WITH AUGER REFUSAL AT 6'.						
							REFUSAL MATERIAL IS LIKELY A RESULT OF BOULDERY SUBSURFACE CONDITIONS.						
							WET ON SPOON (PERCHED?) AT 7'. DRY AND CAVED AT 7'.						

Notes/Comments:  
Pocket Pentrometer Testing  
 S1: 0.75 TSF

Strata (USCS) Designations are approximated based on visual review, except where indicated in Description of Materials.

\* Number of blows of 140 lb. Hammer dropped 30 in. required to drive 2 in. split-spoon sampler in 6 in. increments.  
 N: Number of blows to drive spoon from 6" to 18" interval.

**GEOTECHNICAL LABORATORY TESTING SUMMARY  
SUNOCO PENNSYLVANIA PIPELINE PROJECT  
HDD S2-0220**

HDD No.	Test Boring No.	Sample No.	Depth of Sample (ft.)		Water Content, % (ASTM D2216)	Percent Silts/Clays, % (ASTM D1140)	Atterburg Limits (ASTM D4318)			USCS Classif. (ASTM D2487)
			From	To			Liquid Limit, %	Plastic Limit, %	Plasticity Index, %	
S2-0220	SB-02	1	3.0	5.0	39.9	98.2	48	34	14	ML

1) Sample depths based on feet below grade at time of exploration.

**REGIONAL GEOLOGY SUMMARY  
SUNOCO PENNSYLVANIA PIPELINE PROJECT  
HDD S2-0220**

HDD No.	NAME	BORING NO.	REGIONAL GEOLOGY DESCRIPTION	GENERAL TOPOGRAPHIC SETTING	BEDROCK FORMATION	GENERAL ROCK TYPE	APPROX MAX FM THICKNESS (FT)	DEPTH TO ROCK (Ft bgs) based on nearby well drilling logs	NOTES / COMMENTS
S2-0220	I-81	SB-01	<b>St. Paul Group</b> - consists of buff-colored magnesium limestone and very finely crystalline birdseye limestone at its top and base.	Level terrain	St. Paul Group	Crystalline limestone, chert, and dolomite (St. Paul)	1,500	Highly variable! 2-95 ft bgs, average DTB ~ 40 ft bgs	Fractured limestone with voids noted on boring logs
		SB-02							Very finely crystalline, "birdseye" limestone at top and base, granular fossiliferous limestone, black chert, and dolomite in middle

*Note : Source of well log data - <http://www.dcnr.state.pa.us/topogeo/groundwater/pagwis/records/index.htm>. All other sources as referenced in comments section.*

# FIELD DESCRIPTION AND LOGGING SYSTEM FOR SOIL EXPLORATION

## GRANULAR SOILS

(Sand, Gravel & Combinations)

<u>Density</u>	<u>N (blows)*</u>
Very Loose	5 or less
Loose	6 to 10
Medium Dense	11 to 30
Dense	31 to 50
Very Dense	51 or more

### Particle Size Identification

Boulders	8 in. diameter or more
Cobbles	3 to 8 in. diameter
Gravel	Coarse (C) 3 in. to ¾ in. sieve
	Fine (F) ¾ in. to No. 4 sieve
Sand	Coarse (C) No. 4 to No. 10 sieve (4.75mm-2.00mm)
	Medium (M) No. 10 to No. 40 sieve (2.00mm – 0.425mm)
	Fine (F) No. 40 to No. 200 sieve (0.425 – 0.074mm)
Silt/Clay	Less Than a No. 200 sieve (<0.074mm)

### Relative Proportions

<u>Description Term</u>	<u>Percent</u>
Trace	1 - 10
Little	11 - 20
Some	21 - 35
And	36 - 50

## COHESIVE SOILS

(Silt, Clay & Combinations)

<u>Consistency</u>	<u>N (blows)*</u>
Very Soft	3 or less
Soft	4 to 5
Medium Stiff	6 to 10
Stiff	11 to 15
Very Stiff	16 to 30
Hard	31 or more

### Plasticity

<u>Degree of Plasticity</u>	<u>Plasticity Index</u>
None to Slight	0 - 4
Slight	5 - 7
Medium	8- 22
High to Very High	> 22

## ROCK

(Rock Cores)

<u>Rock Quality Designation (RQD), %</u>	<u>Rock Quality Description</u>
0-25	Very Poor
25-50	Poor
50-75	Fair
75-90	Good
90-100	Excellent

**\*N - Standard Penetration Resistance.** Driving a 2.0" O.D., 1-3/8" I.D. sampler a distance of 18 inches into undisturbed soil with a 140 pound hammer free falling a distance of 30.0 inches. The number of hammer blows to drive the sampler through each 6 inch interval is recorded; the number of blows required to drive the sampler through the final 12 inch interval is termed the Standard Penetration Resistance (SPR) N-value. For example, blow counts of 6/8/9 (through three 6-inch intervals) results in an SPR N-value of 17 (8+9).

**Groundwater** observations were made at the times indicated. Groundwater elevations fluctuate throughout a given year, depending on actual field porosity and variations in seasonal and annual precipitation.

**UNIFIED SOIL CLASSIFICATION SYSTEM [Casagrande (1948)]**

Major Divisions		Group Symbols	Typical Descriptions	Laboratory Classifications			
Coarse Grained Soils (More than half of material is larger than No. 200 sieve)	Gravels (More than half of coarse fraction is larger than No. 4 sieve size)	Clean gravel (Little or no fines)	GW	Well-graded gravels, gravel-sand mixtures, little or no fines	$C_u = \frac{D_{60}}{D_{10}}$ greater than 4; $C_c = \frac{(D_{30})^2}{D_{10} \times D_{60}}$ between 1 and 3  Not meeting $C_u$ or $C_c$ requirements for GW		
			GP	Poorly graded gravels, gravel-sand mixtures, little or no fines			
		Gravel with fines (Appreciable amount of fines)	GM	Silty gravels, gravel-sand-silt mixtures	Atterberg limits below A Line or $I_p$ less than 4  Atterberg limits above A line with $I_p$ greater than 7  Limits plotting in hatched zone with $I_p$ between 4 and 7 are borderline cases requiring use of dual symbols		
			GC	Clayey gravels, gravel-sand-clay mixtures			
	Sands (More than half of coarse fraction is smaller than No. 4 Sieve)	Clean sands (Little or no fines)	SW	Well graded sands, gravelly sands, little or no fines	$C_u = \frac{D_{60}}{D_{10}}$ greater than 6; $C_c = \frac{(D_{30})^2}{D_{10} \times D_{60}}$ between 1 and 3  Not meeting $C_u$ or $C_c$ requirements for SW		
			SP	Poorly graded sands, gravelly sands, little or no fines			
		Sands with fines (Appreciable amount of fines)	SM	Silty sands, sand-silt mixtures	Atterberg limits below A Line or $I_p$ less than 4  Atterberg limits above A line with $I_p$ greater than 7  Limits Plotting in hatched zone with $I_p$ between 4 and 7 are borderline cases requiring use of dual symbols		
			SC	Clayey sands, sand-clay mixtures			
		Determine Percentage of sand and gravel from grain size curve. Depending on Percentage of fines (fraction smaller than No. 200 sieve), coarse-grained soils are classified as follows:  Less than 5 percent GW, GP, SW, SP More than 12 percent GM, GC, SM, SC 5 to 12 percent Borderline cases requiring dual symbols <sup>(1)</sup>					
		Major Divisions		Group Symbols	Typical Descriptions	For soils plotting nearly on A line use dual symbols i.e., $I_p = 29.5$ , $w_L = 60$ gives CH-MH. When $w_L$ is near 50 use CL-CH or ML-MH. Take near as $\pm 2$ percent.	
Fine-grained soils (More than half of material is smaller than No. 200 sieve)	Silt and clays (Liquid limit less than 50)	ML	Inorganic silts and very fine sands, rock flour, silty or clayey fine sands, or clayey silts with slight plasticity				
		CL	Inorganic clays of low to medium plasticity, gravelly clays, sandy clays, silty clays, lean clays				
		OL	Organic silts and organic silty clays of low plasticity				
	Silt and Clays (Liquid limit greater than 50)	MH	Inorganic silts, micaceous or diatomaceous fine sandy or silty soils, elastic silts				
		CH	Inorganic clays of high plasticity, fat clays				
		OH	Organic clays of medium to high plasticity, organic silts				
	Highly organic soils	Pt	Peat and other highly organic soils				

(1) Borderline classifications, used for soils possessing characteristics of two groups, are designated by combinations of group symbols. For example: GW-GC. well-graded gravel-sand mixture with clay binder.