



**Legend**

- Proposed 20-inch and 16-inch Pipeline Corridor
- Permanent Access Road
- Temporary Access Road
- Pump Station LOD
- County Boundary
- Local Parks
- State Parks
- State Forest
- State Gamelands
- Wild Natural Areas
- USACE Property
- USDA Soils-Prime Farmlands
- Appalachian National Scenic Trail
- Trails

**Sheet Identifier**

0 1,000 2,000  
 1 inch = 2,000 feet

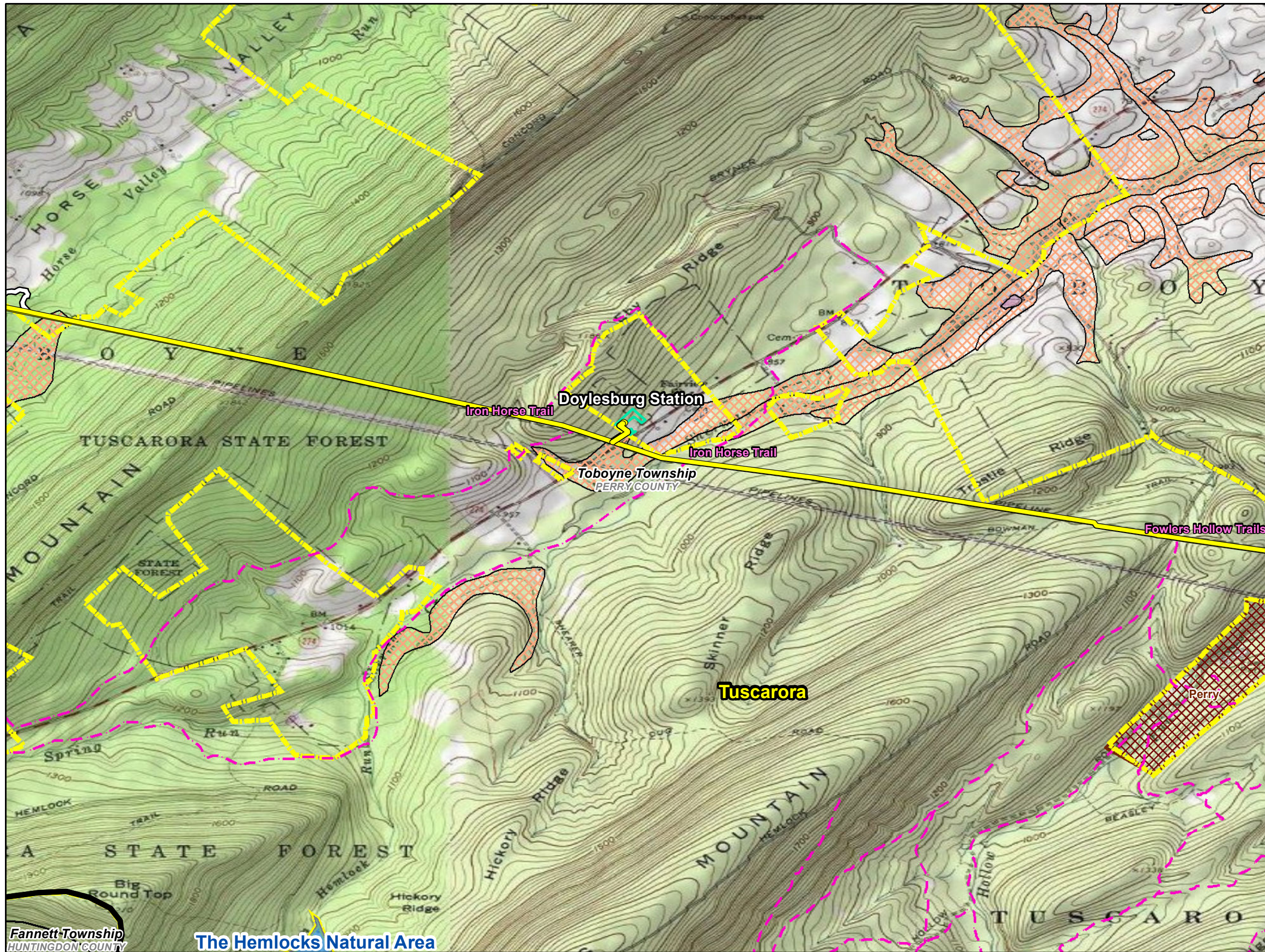
**Pennsylvania Pipeline Project:**  
**Environmental Assessment**  
**Enclosure B - Resource Identification**  
**Sheet 39**

Prepared By: TETRA TECH

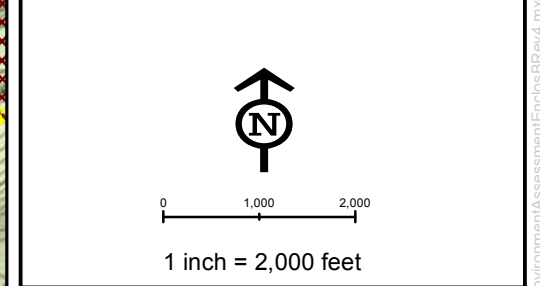
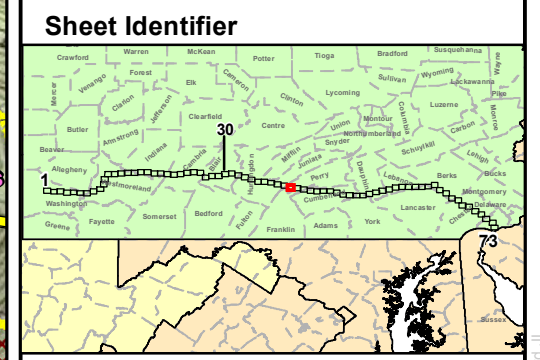
Prepared for: Sunoco Logistics

Base Map: ESRI ArcGIS Online	Date:
Coordinate System: NAD 83 UTM 17N	10/2016

P:\GIS\projects\112\059558-PPP\MapXD\Permits\PPP\_Environment\Assessment\EnclosB\Rev4.mxd JL



- ### Legend
- Proposed 20-inch and 16-inch Pipeline Corridor
  - Permanent Access Road
  - Temporary Access Road
  - Pump Station LOD
  - County Boundary
  - Local Parks
  - State Parks
  - State Forest
  - State Gamelands
  - Wild Natural Areas
  - USACE Property
  - USDA Soils-Prime Farmlands
  - Appalachian National Scenic Trail
  - Trails



**Pennsylvania Pipeline Project:  
Environmental Assessment  
Enclosure B - Resource Identification  
Sheet 40**

Prepared By: TETRA TECH

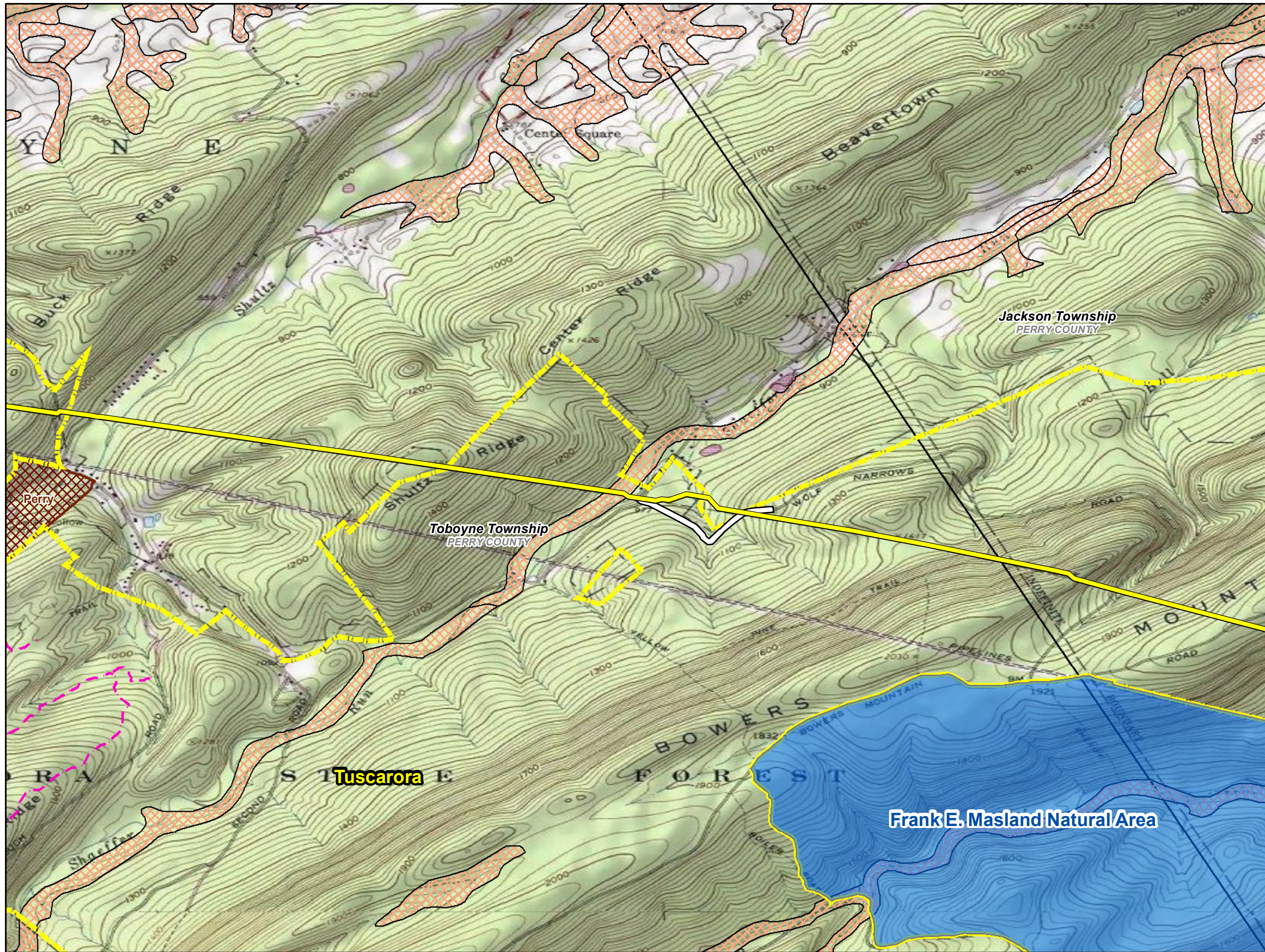
Prepared for: Sunoco Logistics








Base Map: ESRI ArcGIS Online  
Coordinate System: NAD 83 UTM 17N  
Date: 10/2016

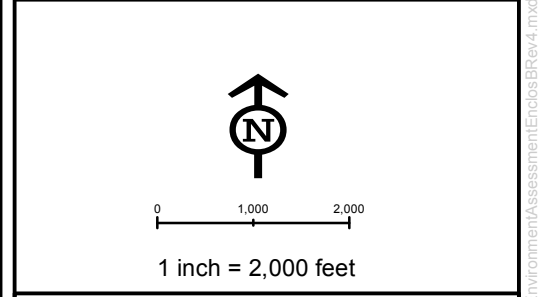
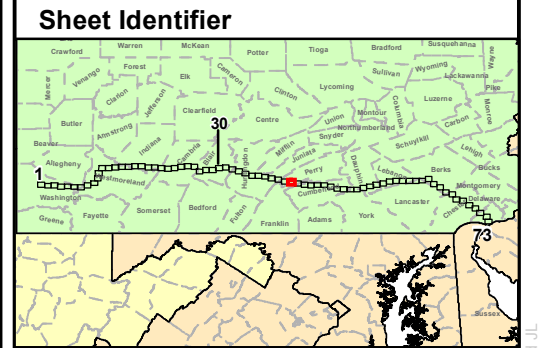
Fannett-Township  
HUNTINGDON COUNTY

The Hemlocks Natural Area

P:\GIS\projects\112\059556-PPP\Map\XDP\Permits\PPP\_Environment\Assessment\EnclosB\Rev4.mxd JL



- Legend**
-  Proposed 20-inch and 16-inch Pipeline Corridor
  -  Permanent Access Road
  -  Temporary Access Road
  -  Pump Station LOD
  -  County Boundary
  -  Local Parks
  -  State Parks
  -  State Forest
  -  State Gamelands
  -  Wild Natural Areas
  -  USACE Property
  -  USDA Soils-Prime Farmlands
  -  Appalachian National Scenic Trail
  -  Trails



**Pennsylvania Pipeline Project:  
Environmental Assessment  
Enclosure B - Resource Identification  
Sheet 41**

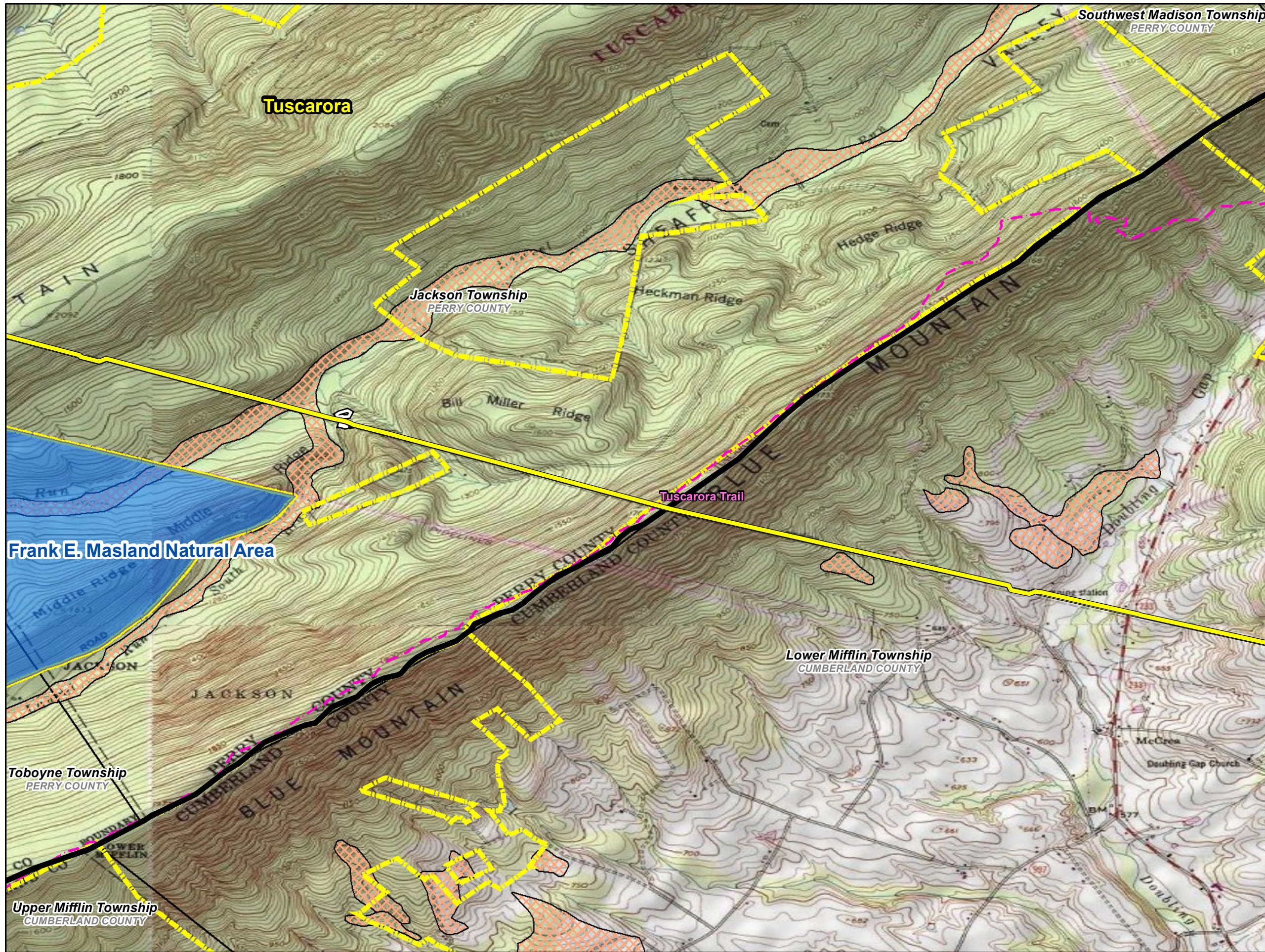
Prepared By:  TETRA TECH

Prepared for:  Sunoco Logistics

Base Map: ESRI ArcGIS Online  
Coordinate System: NAD 83 UTM 17N

**Date:**  
10/2016

P:\GIS\projects\112\CO5956-PFP\W\XD\Permits\PPP\_Environment\Assessment\EncosB\Rev4.mxd JL



**Legend**

- Proposed 20-inch and 16-inch Pipeline Corridor
- Permanent Access Road
- Temporary Access Road
- Pump Station LOD
- County Boundary
- Local Parks
- State Parks
- State Forest
- State Gamelands
- Wild Natural Areas
- USACE Property
- USDA Soils-Prime Farmlands
- Appalachian National Scenic Trail
- Trails

**Sheet Identifier**

0 1,000 2,000  
1 inch = 2,000 feet

**North Arrow**

**Pennsylvania Pipeline Project:  
Environmental Assessment  
Enclosure B - Resource Identification  
Sheet 42**

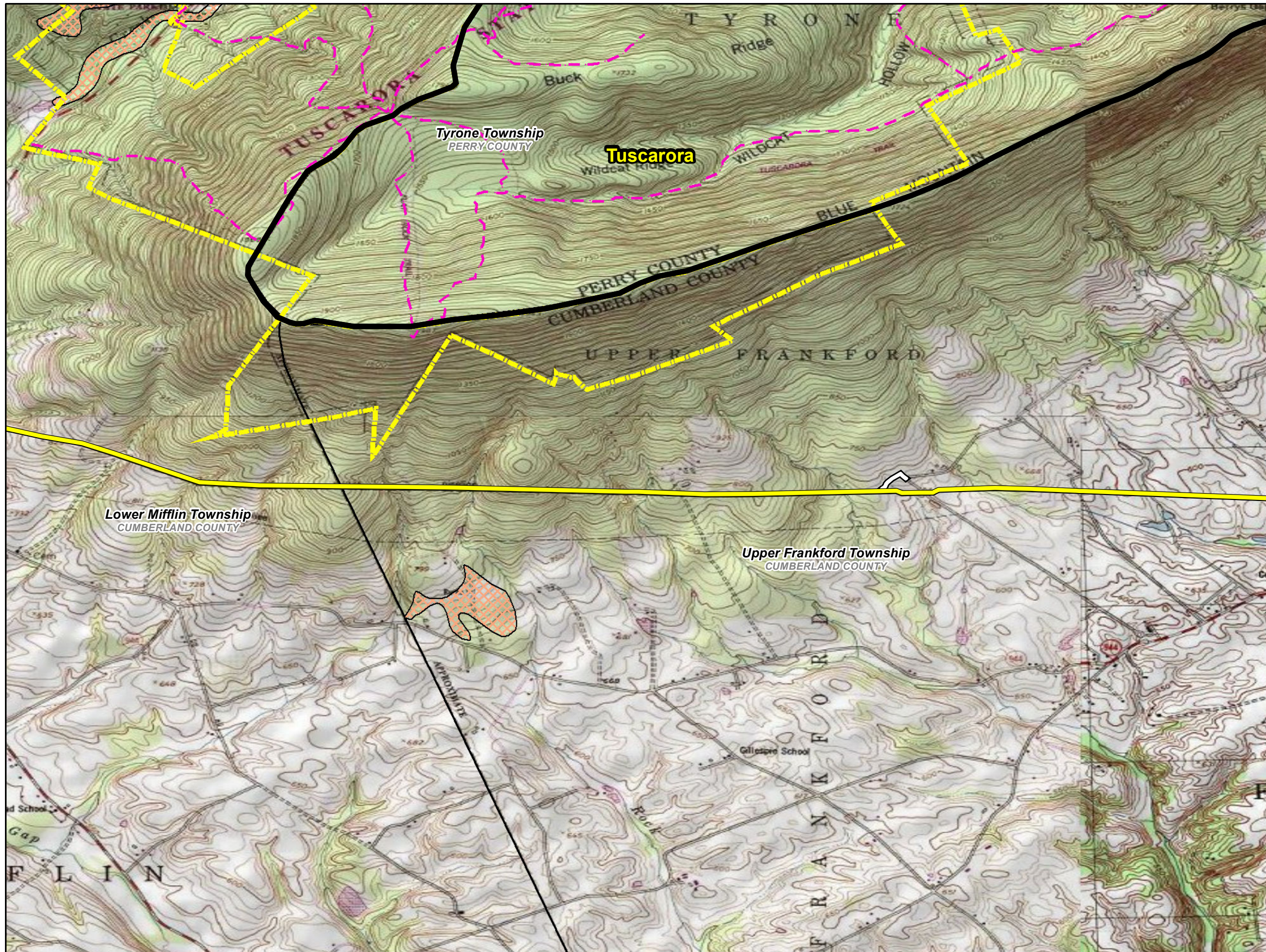
Prepared By: TETRA TECH












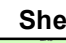
Prepared for: Sunoco Logistics

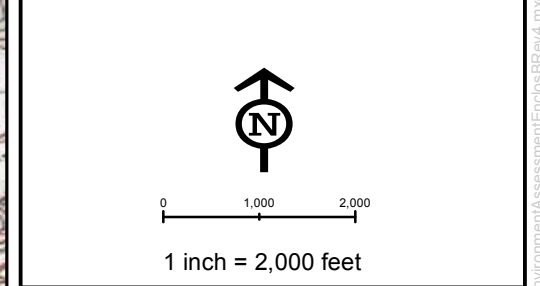
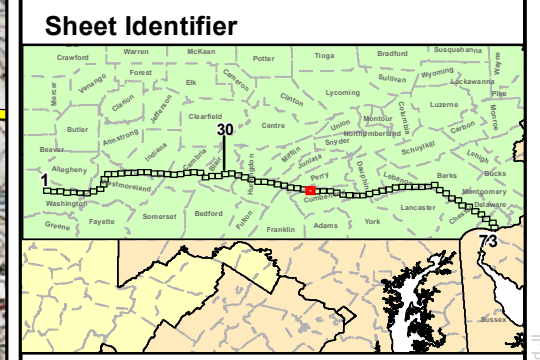
Base Map: ESRI ArcGIS Online  
Coordinate System: NAD 83 UTM 17N

Date:  
10/2016

P:\GIS\projects\112\CO05956-PPP\Map\XDIP\Permits\PPP\_Environment\Assessment\EnclosB\Rev4.mxd JL



- ### Legend
-  Proposed 20-inch and 16-inch Pipeline Corridor
  -  Permanent Access Road
  -  Temporary Access Road
  -  Pump Station LOD
  -  County Boundary
  -  Local Parks
  -  State Parks
  -  State Forest
  -  State Gamelands
  -  Wild Natural Areas
  -  USACE Property
  -  USDA Soils-Prime Farmlands
  -  Appalachian National Scenic Trail
  -  Trails



**Pennsylvania Pipeline Project:  
Environmental Assessment  
Enclosure B - Resource Identification  
Sheet 43**

Prepared By:  TETRA TECH

Prepared for:  Sunoco Logistics

Base Map: ESRI ArcGIS Online	Date:
Coordinate System: NAD 83 UTM 17N	10/2016

P:\GIS\projects\172\059558-PPP\WAD\Permits\PPP\_Environment\Assessment\EnclosB\Rev4.mxd