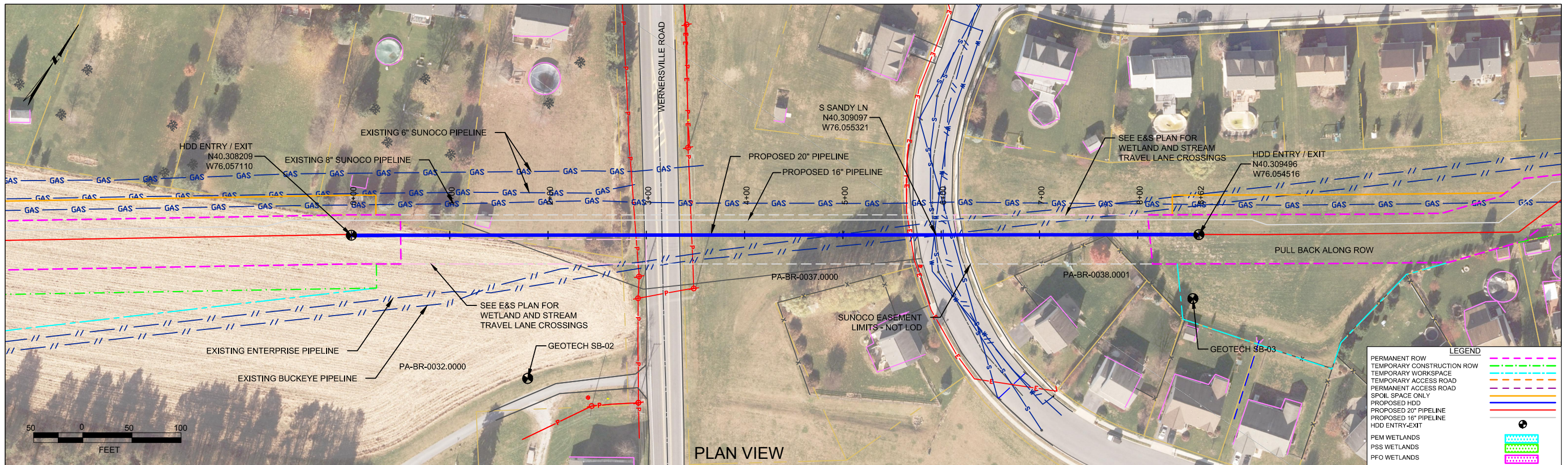
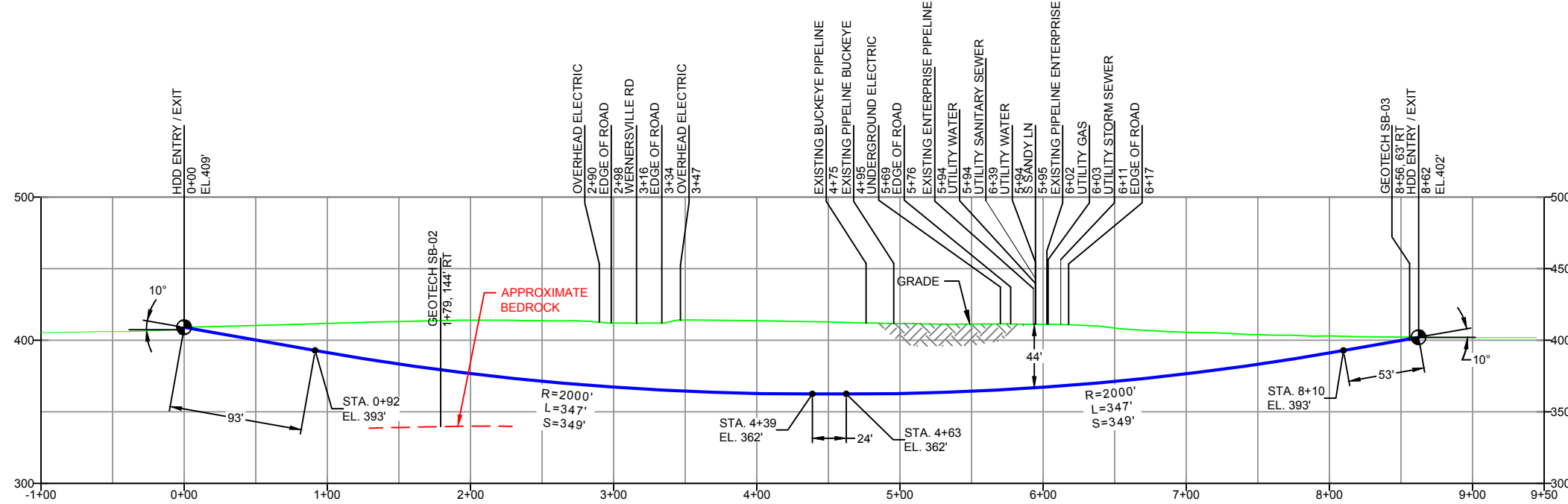
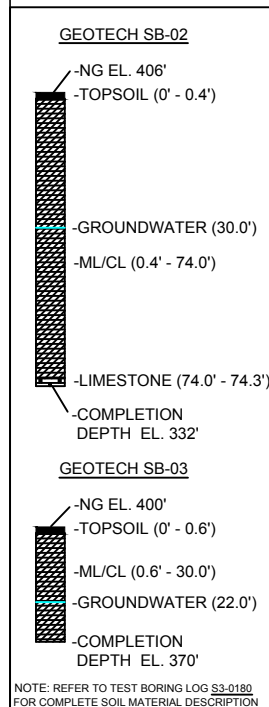


Berks County HDD Plans and Profiles



BERKS COUNTY, PENNSYLVANIA - SOUTH HEIDELBERG TOWNSHIP
S3-0180

PROFILE VIEW



- DESIGN AND CONSTRUCTION:
- CONTRACTOR SHALL FIELD VERIFY DEPTH OF ALL EXISTING UTILITIES SHOWN OR NOT SHOWN ON THIS DRAWING.
 - THE MINIMUM SEPARATION DISTANCE FROM EXISTING SUBSURFACE UTILITIES SHALL NOT BE LESS THAN 10 FEET AS MEASURED FROM THE OUTSIDE EDGE OF THE UTILITY TO OUTSIDE OF PROPOSED PIPELINE.
 - DESIGNED IN ACCORDANCE WITH CFR 49 195 & ASME B31.4
 - CROSSING PIPE SPECIFICATION:
HDD HORZ. LENGTH (L)=942'
HDD PIPE LENGTH (S)=947'
20" x 0.456" W.T., X-65, API5L, PSL2, ERW, BFW
COATING: 14-16 MILS FBE WITH 30-35 MIL ARO (POWERCRETE R95)
 - INTERNAL DESIGN PRESSURE 1480 PSIG (SEAM FACTOR 1.0, DESIGN FACTOR 0.50).
 - INSTALLATION METHOD: HORIZONTAL DIRECTIONAL DRILL (HDD).
 - PIPELINE WARNING MARKERS SHALL BE INSTALLED ON BOTH SIDES OF ALL ROAD, RAILWAY, AND STREAM CROSSINGS.
 - CARRIER PIPE NOT ENCASED
 - PIPE / AMBIENT TEMPERATURE MUST BE NO LESS THAN 30°F DURING PULLBACK WITHOUT PRIOR WRITTEN APPROVAL FROM THE ENGINEER
 - CONDUCT 4-HOUR PRE-INSTALLATION HYDROTEST OF HDD PIPE STRING TO MINIMUM 1850 PSIG.
 - SEE SUNOCO PENNSYLVANIA PIPELINE PROJECT ESRI WEBMAP FOR ACCESS ROAD ALIGNMENT.
 - SUNOCO PIPELINE, L.P.'S HORIZONTAL DIRECTIONAL DRILL INADVERTENT RETURN CONTINGENCY PLAN WILL BE IMPLEMENTED AT ALL TIMES.
 - SUNOCO PIPELINE, L.P.'S EROSION AND SEDIMENTATION CONTROL PLAN WILL BE IMPLEMENTED AT ALL TIMES.

NOTES

- ALL COORDINATES SHOWN ARE IN LATITUDE AND LONGITUDE. ALL MSL ELEVATIONS ARE NAD83
- STATIONING IS BASED ON HORIZONTAL DISTANCES
- ROONEY ENGINEERING, INC. AND SUNOCO PIPELINE, LP ARE NOT RESPONSIBLE FOR LOCATION OF FOREIGN UTILITIES SHOWN IN PLOT PLAN OR PROFILE. THE INFORMATION SHOWN HEREON IS FURNISHED WITHOUT LIABILITY ON THE PART OF ROONEY ENGINEERING, INC. AND SUNOCO PIPELINE, LP. FOR ANY DAMAGES RESULTING FROM ERRORS OR OMISSIONS THEREIN.
- CONTRACTOR IS RESPONSIBLE FOR LOCATING ALL UTILITIES. CONTACT ONE CALL AT 811 PRIOR TO DIGGING.
- SUNOCO EMERGENCY HOTLINE NUMBER IS #1-800-786-7440.

REF. DRAWING	NO.	DESCRIPTION	NO.	DESCRIPTION
ES-5.11	TO	EROSION & SEDIMENT PLAN	EP2	REVISED PER PADEP COMMENTS RECEIVED 09-06-16
SHEET 6	TO	AERIAL SITE PLAN	EP1	REVISED PER PADEP COMMENTS
			EP	
			C	ADDED GEOTECH INFO
			B	ISSUED FOR BID
			A	ISSUED FOR REVIEW

REVISIONS

BY	DATE	CHK	DATE	APP	DATE
DLM	10/24/16	RMB	10/24/16	AAW	10/24/16
JTW	05/09/16	RMB	05/09/16	AAW	05/09/16
MRS	02/26/16	RMB	02/26/16	AAW	02/26/16
MRS	09/24/15	RMB	09/24/15	AAW	09/24/15
DLM	07/31/15	RMB	07/31/15	AAW	07/31/15
JVA	04/15/15	RMB	04/15/15	AAW	04/15/15

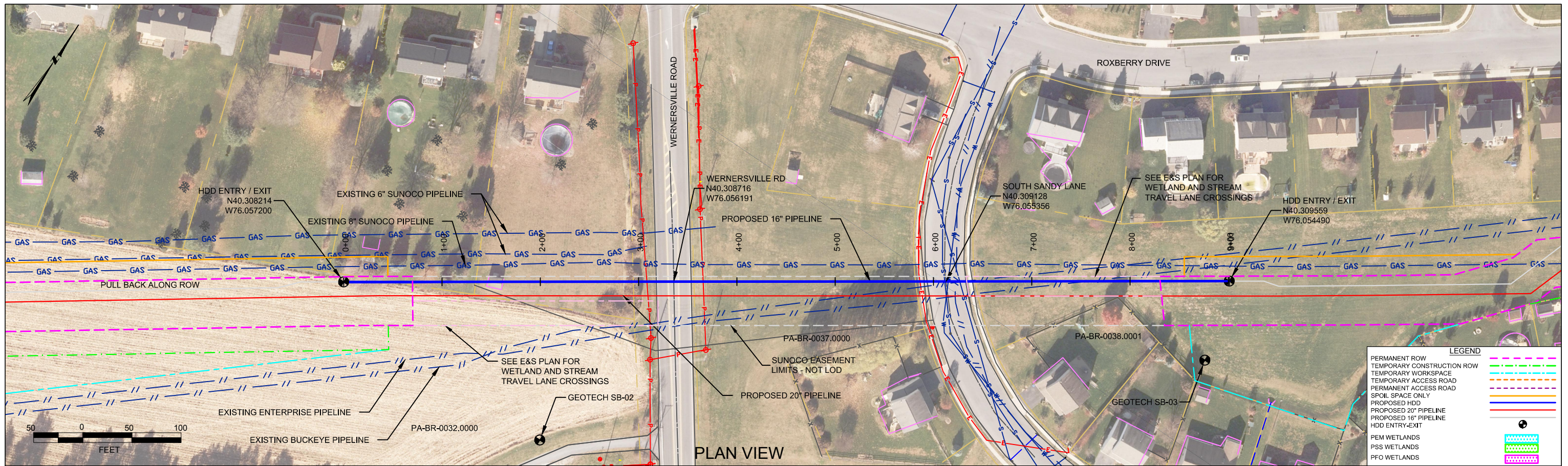
Sunoco Logistics Partners L.P.

TETRA TECH ROONEY
(303) 792-5911

SUNOCO PIPELINE, L.P.

20-INCH HORIZONTAL DIRECTIONAL DRILL
WERNERSVILLE ROAD
PENNSYLVANIA PIPELINE PROJECT

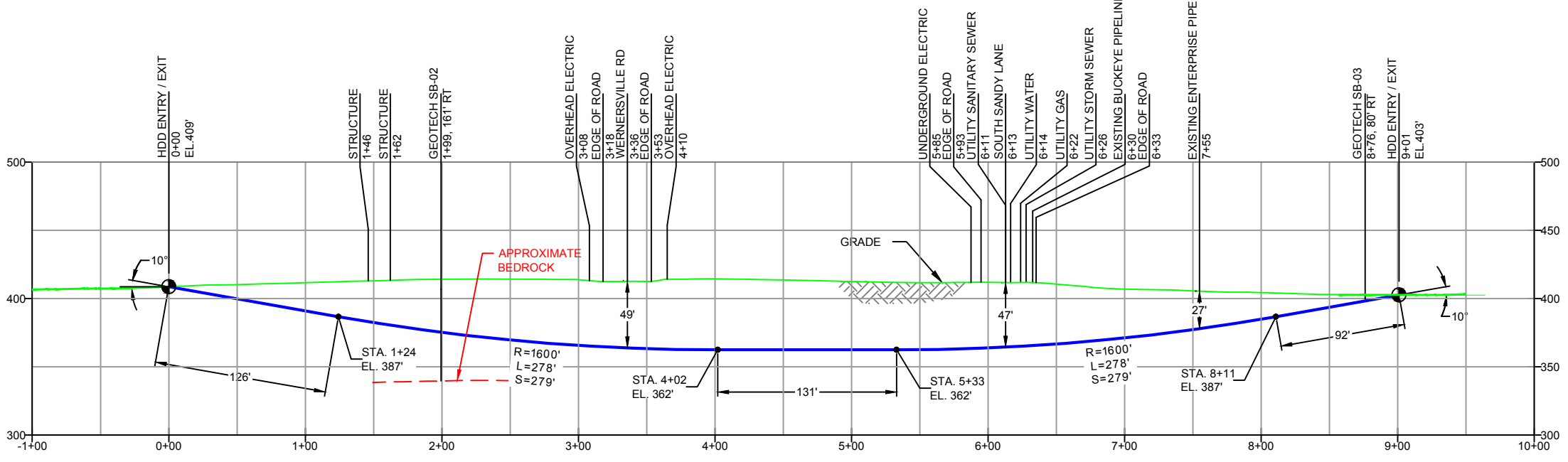
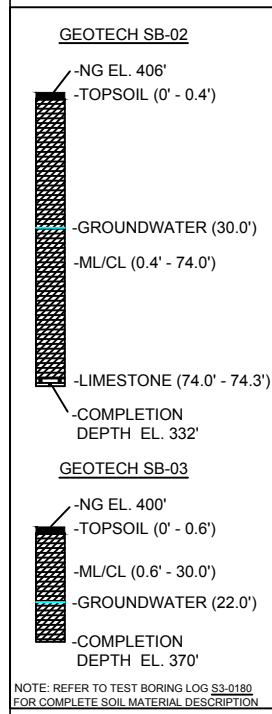
SCALE: 1"=100' DWG. NO: PA-BR-0032.0000-RD



PLAN VIEW

BERKS COUNTY, PENNSYLVANIA - SOUTH HEIDELBERG TOWNSHIP
S3-0180-16

PROFILE VIEW



- DESIGN AND CONSTRUCTION:
- CONTRACTOR SHALL FIELD VERIFY DEPTH OF ALL EXISTING UTILITIES SHOWN OR NOT SHOWN ON THIS DRAWING.
 - THE MINIMUM SEPARATION DISTANCE FROM EXISTING SUBSURFACE UTILITIES SHALL NOT BE LESS THAN 10 FEET AS MEASURED FROM THE OUTSIDE EDGE OF THE UTILITY TO OUTSIDE OF PROPOSED PIPELINE.
 - DESIGNED IN ACCORDANCE WITH CFR 49 195 & ASME B31.4
 - CROSSING PIPE SPECIFICATION:
HDD HORZ. LENGTH (L)=901'
HDD PIPE LENGTH (S)=907'
16" x 0.438" W.T., X-70, API5L, PSL2, ERW, BFW
COATING: 14-16 MILS FBE WITH 30-35 MIL ARO (POWERCRETE R95)
 - INTERNAL DESIGN PRESSURE 1480 PSIG (SEAM FACTOR 1.0, DESIGN FACTOR 0.50).
 - INSTALLATION METHOD: HORIZONTAL DIRECTIONAL DRILL (HDD).
 - PIPELINE WARNING MARKERS SHALL BE INSTALLED ON BOTH SIDES OF ALL ROAD, RAILWAY, AND STREAM CROSSINGS.
 - CARRIER PIPE NOT ENCASED
 - PIPE / AMBIENT TEMPERATURE MUST BE NO LESS THAN 30°F DURING PULLBACK WITHOUT PRIOR WRITTEN APPROVAL FROM THE ENGINEER
 - CONDUCT 4-HOUR PRE-INSTALLATION HYDROTEST OF HDD PIPE STRING TO MINIMUM 1850 PSIG.
 - SEE SUNOCO PENNSYLVANIA PIPELINE PROJECT ESRI WEBMAP FOR ACCESS ROAD ALIGNMENT.
 - SUNOCO PIPELINE, L.P.'S HORIZONTAL DIRECTIONAL DRILL INADVERTENT RETURN CONTINGENCY PLAN WILL BE IMPLEMENTED AT ALL TIMES.
 - SUNOCO PIPELINE, L.P.'S EROSION AND SEDIMENTATION CONTROL PLAN WILL BE IMPLEMENTED AT ALL TIMES.

NOTES

- ALL COORDINATES SHOWN ARE IN LATITUDE AND LONGITUDE. ALL MSL ELEVATIONS ARE NAD83
- STATIONING IS BASED ON HORIZONTAL DISTANCES
- ROONEY ENGINEERING, INC. AND SUNOCO PIPELINE, LP ARE NOT RESPONSIBLE FOR LOCATION OF FOREIGN UTILITIES SHOWN IN PLOT PLAN OR PROFILE. THE INFORMATION SHOWN HEREON IS FURNISHED WITHOUT LIABILITY ON THE PART OF ROONEY ENGINEERING, INC. AND SUNOCO PIPELINE, LP. FOR ANY DAMAGES RESULTING FROM ERRORS OR OMISSIONS THEREIN.
- CONTRACTOR IS RESPONSIBLE FOR LOCATING ALL UTILITIES. CONTACT ONE CALL AT 811 PRIOR TO DIGGING.
- SUNOCO EMERGENCY HOTLINE NUMBER IS #1-800-786-7440.

REF. DRAWING	NO.	DESCRIPTION	NO.	DESCRIPTION
ES-5.11	TO	ES-5.11	EROSION & SEDIMENT PLAN	
SHEET 6	TO	SHEET 6	AERIAL SITE PLAN	EP2 REVISED PER PADEP COMMENTS RECEIVED 09-06-16
				EP1 REVISED PER PADEP COMMENTS
				EP
				B ADDED GEOTECH INFO
				A ISSUED FOR BID

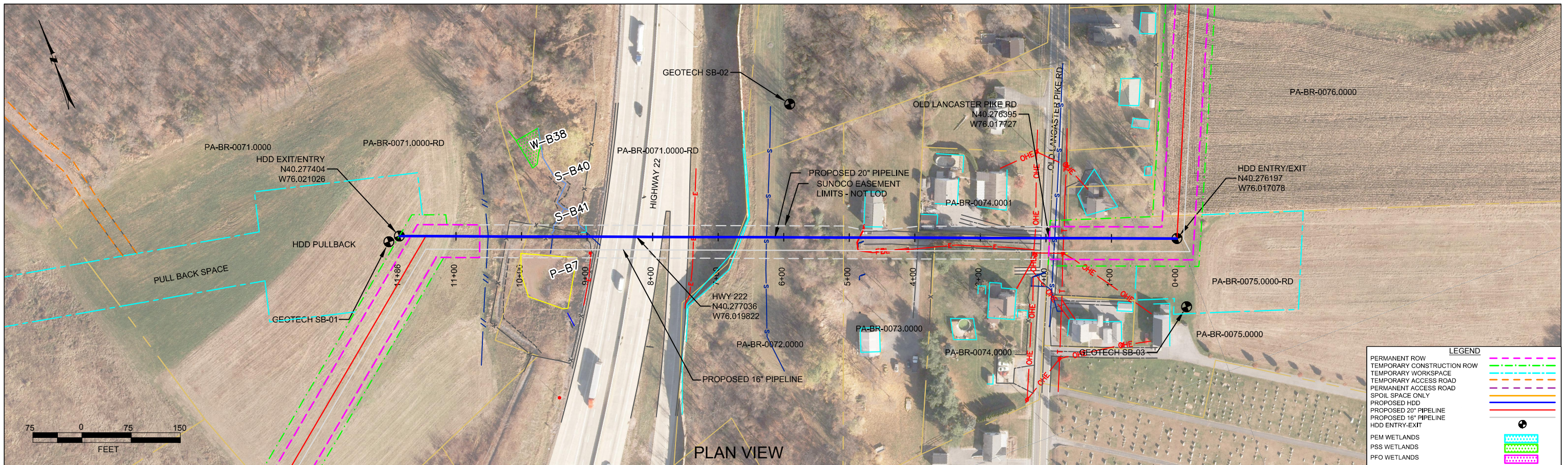
Sunoco Logistics Partners L.P.

TETRA TECH ROONEY
(303) 792-5911

SUNOCO PIPELINE, L.P.

16-INCH HORIZONTAL DIRECTIONAL DRILL
WERNERSVILLE ROAD
PENNSYLVANIA PIPELINE PROJECT

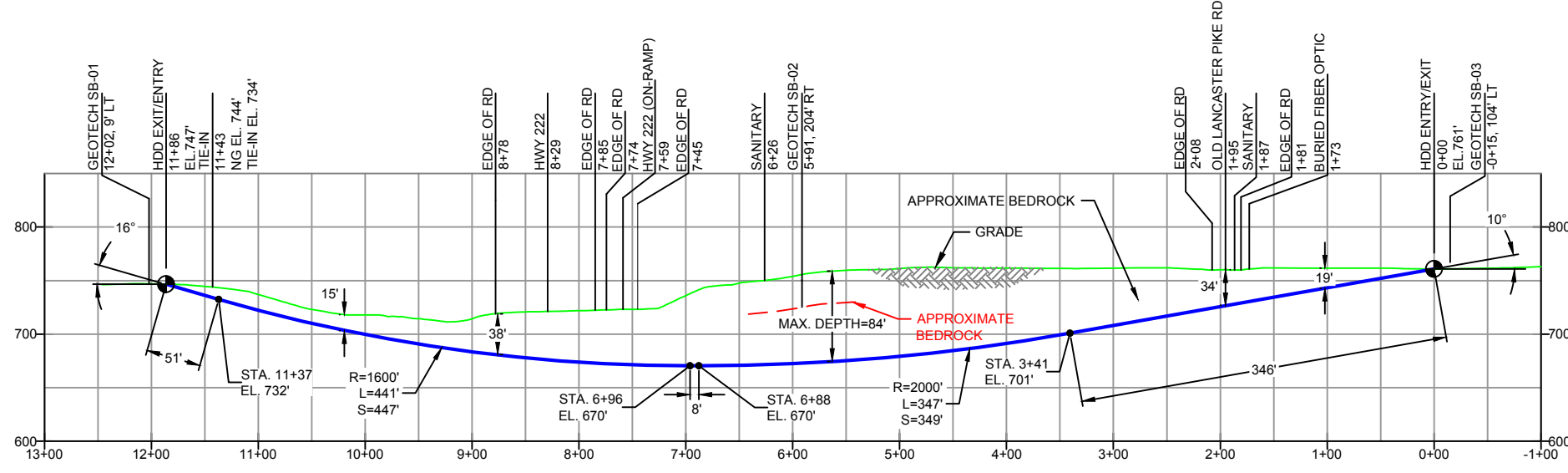
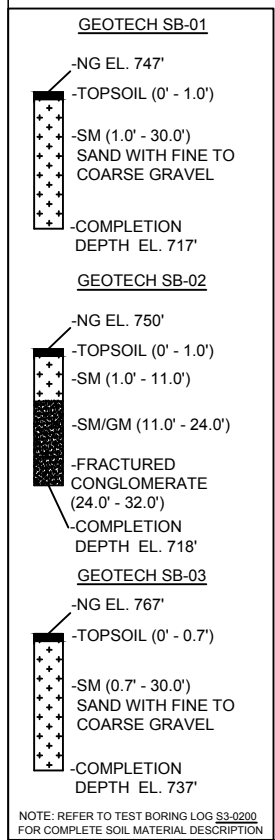
SCALE: 1"=100' DWG. NO: PA-BR-0032.0000-RD-16



PLAN VIEW

PROFILE VIEW

BERKS COUNTY, PENNSYLVANIA - CUMRU TOWNSHIP
S3-0200



- DESIGN AND CONSTRUCTION:
- CONTRACTOR SHALL FIELD VERIFY DEPTH OF ALL EXISTING UTILITIES SHOWN OR NOT SHOWN ON THIS DRAWING.
 - THE MINIMUM SEPARATION DISTANCE FROM EXISTING SUBSURFACE UTILITIES SHALL NOT BE LESS THAN 10 FEET AS MEASURED FROM THE OUTSIDE EDGE OF THE UTILITY TO OUTSIDE OF PROPOSED PIPELINE.
 - DESIGNED IN ACCORDANCE WITH CFR 49 195 & ASME B31.4
 - CROSSING PIPE SPECIFICATION:
HDD HORZ. LENGTH (L)=1186'
HDD PIPE LENGTH (S)=1201'
20" x 0.456" W.T., X-65, API5L, PSL2, ERW, BFW
COATING: 14-16 MILS FBE WITH 30-35 MIL ARO (POWERCRETE R95)
 - INTERNAL DESIGN PRESSURE 1480 PSIG (SEAM FACTOR 1.0, DESIGN FACTOR 0.50).
 - INSTALLATION METHOD: HORIZONTAL DIRECTIONAL DRILL (HDD).
 - PIPELINE WARNING MARKERS SHALL BE INSTALLED ON BOTH SIDES OF ALL ROAD, RAILWAY, AND STREAM CROSSINGS.
 - CARRIER PIPE NOT ENCASED.
 - PIPE / AMBIENT TEMPERATURE MUST BE NO LESS THAN 30°F DURING PULLBACK WITHOUT PRIOR WRITTEN APPROVAL FROM THE ENGINEER.
 - CONDUCT 4-HOUR PRE-INSTALLATION HYDROTEST OF HDD PIPE STRING TO MINIMUM 1850 PSIG.
 - SEE SUNOCO PENNSYLVANIA PIPELINE PROJECT ESRI WEBMAP FOR ACCESS ROAD ALIGNMENT.
 - SUNOCO PIPELINE, L.P.'S HORIZONTAL DIRECTIONAL DRILL INADVERTENT RETURN CONTINGENCY PLAN WILL BE IMPLEMENTED AT ALL TIMES.
 - SUNOCO PIPELINE, L.P.'S EROSION AND SEDIMENTATION CONTROL PLAN WILL BE IMPLEMENTED AT ALL TIMES.

NOTES

- ALL COORDINATES SHOWN ARE IN LATITUDE AND LONGITUDE. ALL MSL ELEVATIONS ARE NAD83
- STATIONING IS BASED ON HORIZONTAL DISTANCES.
- ROONEY ENGINEERING, INC. AND SUNOCO PIPELINE, LP ARE NOT RESPONSIBLE FOR LOCATION OF FOREIGN UTILITIES SHOWN IN PLOT PLAN OR PROFILE. THE INFORMATION SHOWN HEREON IS FURNISHED WITHOUT LIABILITY ON THE PART OF ROONEY ENGINEERING, INC. AND SUNOCO PIPELINE, LP. FOR ANY DAMAGES RESULTING FROM ERRORS OR OMISSIONS THEREIN.
- CONTRACTOR IS RESPONSIBLE FOR LOCATING ALL UTILITIES. CONTACT ONE CALL AT 811 PRIOR TO DIGGING.
- SUNOCO EMERGENCY HOTLINE NUMBER IS #1-800-786-7440.

REF. DRAWING		REVISIONS		
ES-5.27	TO ES-5.28	EP2	REVISED PER PADEP COMMENTS RECEIVED 09-06-16	
SHEET 15	TO SHEET 16	EP1	REVISED PER PADEP COMMENTS	
		EP		
		C	ADDED GEOTECH INFO	
		B	ISSUED FOR BID	
		A	ISSUED FOR REVIEW	
DWG NO	DWG NO	DESCRIPTION	NO.	DESCRIPTION

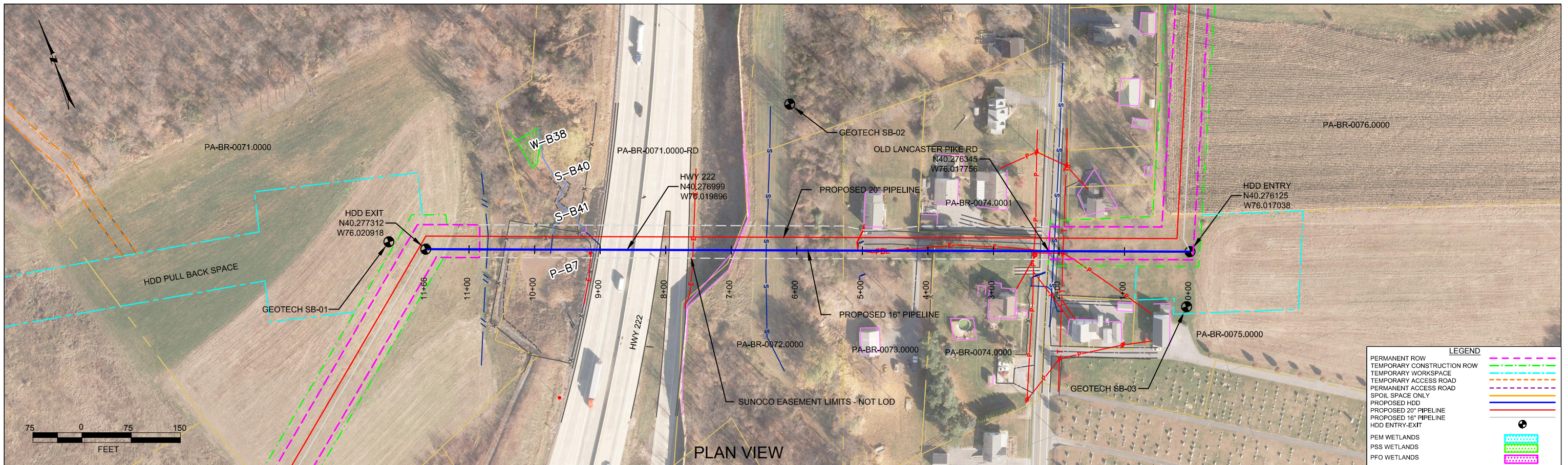
**Sunoco Logistics
Partners L.P.**

TETRA TECH ROONEY
(303) 792-5911

SUNOCO PIPELINE, L.P.

20-INCH HORIZONTAL DIRECTIONAL DRILL
HWY 222
PENNSYLVANIA PIPELINE PROJECT

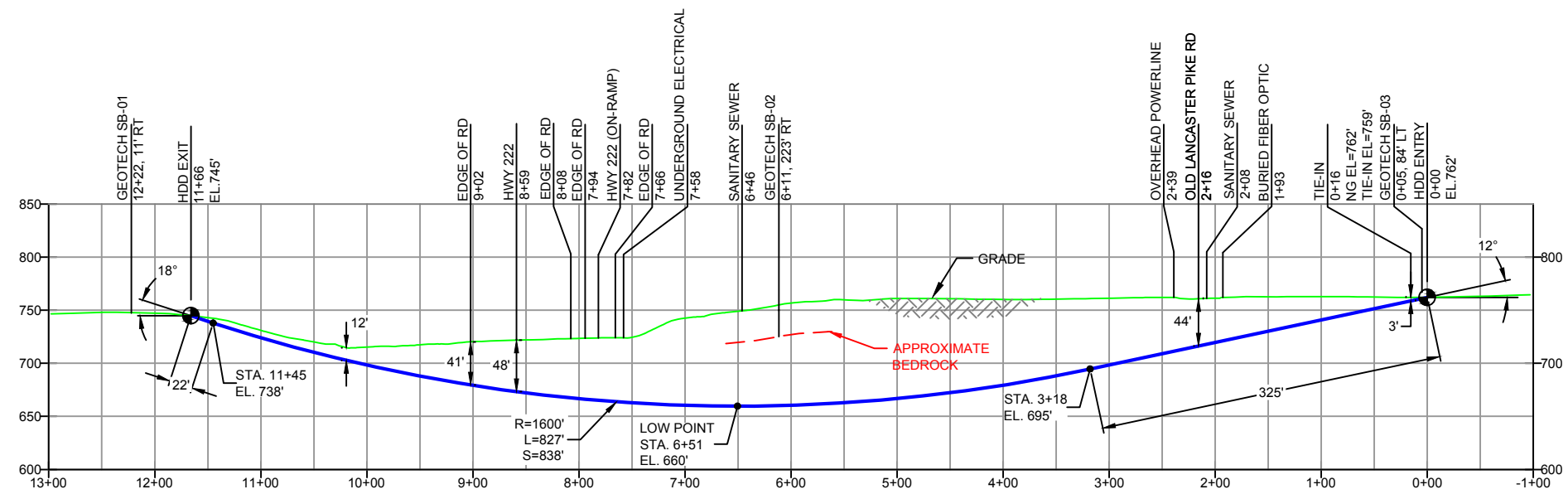
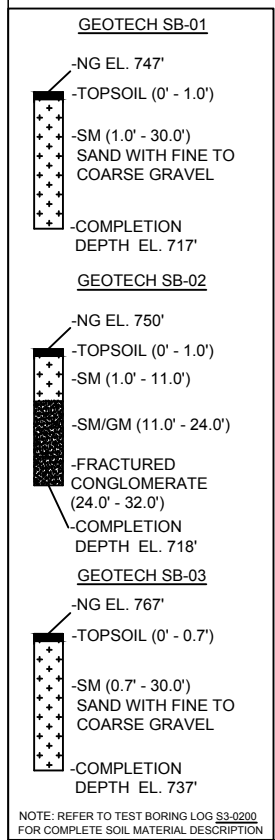
SCALE: 1"=150' DWG. NO: PA-BR-0075.0000-RD



PLAN VIEW

BERKS COUNTY, PENNSYLVANIA - CUMRU TOWNSHIP
S3-0200-16

PROFILE VIEW



- DESIGN AND CONSTRUCTION:
- CONTRACTOR SHALL FIELD VERIFY DEPTH OF ALL EXISTING UTILITIES SHOWN OR NOT SHOWN ON THIS DRAWING.
 - THE MINIMUM SEPARATION DISTANCE FROM EXISTING SUBSURFACE UTILITIES SHALL NOT BE LESS THAN 10 FEET AS MEASURED FROM THE OUTSIDE EDGE OF THE UTILITY TO OUTSIDE OF PROPOSED PIPELINE.
 - DESIGNED IN ACCORDANCE WITH CFR 49 195 & ASME B31.4
 - CROSSING PIPE SPECIFICATION:
HDD HORZ. LENGTH (L=): 1166'
HDD PIPE LENGTH (S=): 1185'
16" x 0.438" W.T., X-70, API5L, PSL2, ERW, BFW
COATING: 14-16 MILS FBE WITH 30-35 MIL ARO (POWERCRETE R95)
 - INTERNAL DESIGN PRESSURE 1480 PSIG (SEAM FACTOR 1.0, DESIGN FACTOR 0.50).
 - INSTALLATION METHOD: HORIZONTAL DIRECTIONAL DRILL (HDD).
 - PIPELINE WARNING MARKERS SHALL BE INSTALLED ON BOTH SIDES OF ALL ROAD, RAILWAY, AND STREAM CROSSINGS.
 - CARRIER PIPE NOT ENCASED.
 - PIPE / AMBIENT TEMPERATURE MUST BE NO LESS THAN 30°F DURING PULLBACK WITHOUT PRIOR WRITTEN APPROVAL FROM THE ENGINEER.
 - CONDUCT 4-HOUR PRE-INSTALLATION HYDROTEST OF HDD PIPE STRING TO MINIMUM 1850 PSIG.
 - SEE SUNOCO PENNSYLVANIA PIPELINE PROJECT ESRI WEBMAP FOR ACCESS ROAD ALIGNMENT.
 - SUNOCO PIPELINE, L.P.'S HORIZONTAL DIRECTIONAL DRILL INADVERTENT RETURN CONTINGENCY PLAN WILL BE IMPLEMENTED AT ALL TIMES.
 - SUNOCO PIPELINE, L.P.'S EROSION AND SEDIMENTATION CONTROL PLAN WILL BE IMPLEMENTED AT ALL TIMES.

- NOTES
- ALL COORDINATES SHOWN ARE IN LATITUDE AND LONGITUDE. ALL MSL ELEVATIONS ARE NAD83
 - STATIONING IS BASED ON HORIZONTAL DISTANCES.
 - ROONEY ENGINEERING, INC. AND SUNOCO PIPELINE, LP ARE NOT RESPONSIBLE FOR LOCATION OF FOREIGN UTILITIES SHOWN IN PLOT PLAN OR PROFILE. THE INFORMATION SHOWN HEREON IS FURNISHED WITHOUT LIABILITY ON THE PART OF ROONEY ENGINEERING, INC. AND SUNOCO PIPELINE, LP. FOR ANY DAMAGES RESULTING FROM ERRORS OR OMISSIONS THEREIN.
 - CONTRACTOR IS RESPONSIBLE FOR LOCATING ALL UTILITIES. CONTACT ONE CALL AT 811 PRIOR TO DIGGING.
 - SUNOCO EMERGENCY HOTLINE NUMBER IS #1-800-786-7440.

REF. DRAWING		REVISIONS	
ES-5.27	TO ES-5.28	DESCRIPTION	
SHEET 15	TO SHEET 16	AERIAL SITE PLAN	EP2 REVISED PER PADEP COMMENTS RECEIVED 09-06-16
			EP1 REVISED PER PADEP COMMENTS
			EP
			B ADDED GOETECH INFO
			A ISSUED FOR BID
DWG NO	DWG NO	DESCRIPTION	NO.

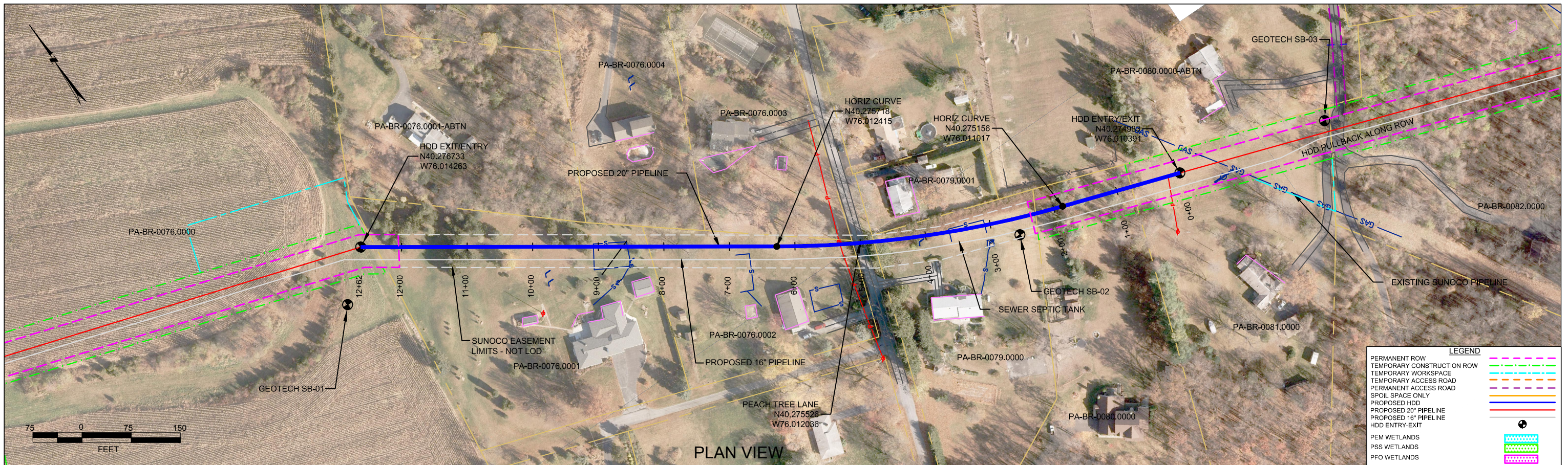
**Sunoco Logistics
Partners L.P.**

TETRA TECH ROONEY
(303) 792-5911

SUNOCO PIPELINE, L.P.

16-INCH HORIZONTAL DIRECTIONAL DRILL
HWY 222
PENNSYLVANIA PIPELINE PROJECT

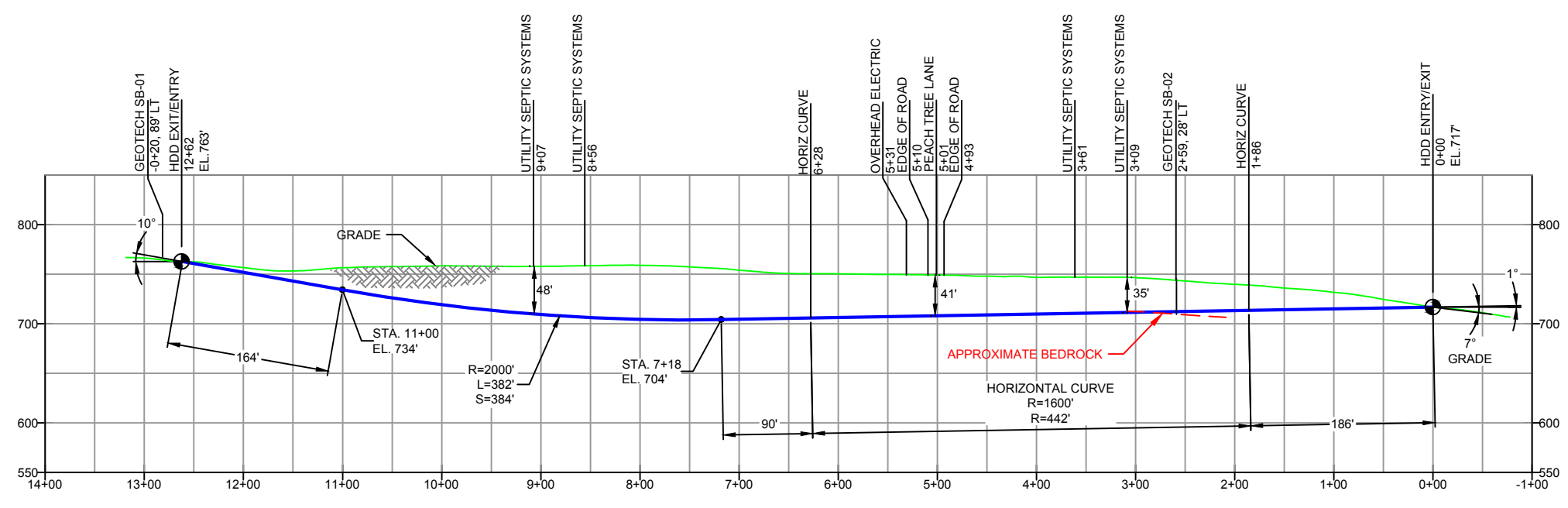
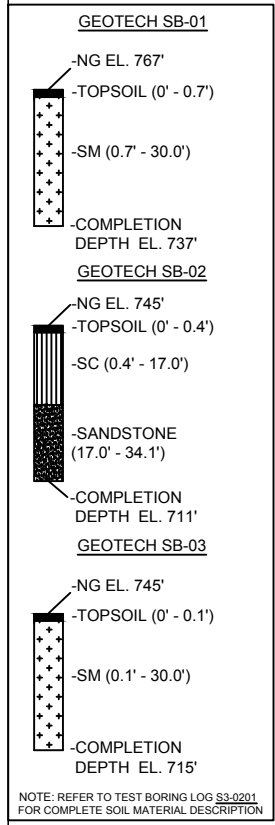
SCALE: 1"=150' DWG. NO: PA-BR-0075.0000-RD-16



PLAN VIEW

BERKS COUNTY, PENNSYLVANIA - CUMRU TOWNSHIP
S3-0201

PROFILE VIEW



- DESIGN AND CONSTRUCTION:
- CONTRACTOR SHALL FIELD VERIFY DEPTH OF ALL EXISTING UTILITIES SHOWN OR NOT SHOWN ON THIS DRAWING.
 - THE MINIMUM SEPARATION DISTANCE FROM EXISTING SUBSURFACE UTILITIES SHALL NOT BE LESS THAN 10 FEET AS MEASURED FROM THE OUTSIDE EDGE OF THE UTILITY TO OUTSIDE OF PROPOSED PIPELINE.
 - DESIGNED IN ACCORDANCE WITH CFR 49 195 & ASME B31.4
 - CROSSING PIPE SPECIFICATION:
HDD HORZ. LENGTH (L=): 1262'
HDD PIPE LENGTH (S=): 1266'
20" x 0.456" W.T., X-65, API5L, PSL2, ERW, BFW
COATING: 14-16 MILS FBE WITH 30-35 MIL ARO (POWERCRETE R95)
 - INTERNAL DESIGN PRESSURE 1480 PSIG (SEAM FACTOR 1.0, DESIGN FACTOR 0.50).
 - INSTALLATION METHOD: HORIZONTAL DIRECTIONAL DRILL (HDD).
 - PIPELINE WARNING MARKERS SHALL BE INSTALLED ON BOTH SIDES OF ALL ROAD, RAILWAY, AND STREAM CROSSINGS.
 - CARRIER PIPE NOT ENCASED.
 - PIPE / AMBIENT TEMPERATURE MUST BE NO LESS THAN 30°F DURING PULLBACK WITHOUT PRIOR WRITTEN APPROVAL FROM THE ENGINEER.
 - CONDUCT 4-HOUR PRE-INSTALLATION HYDROTEST OF HDD PIPE STRING TO MINIMUM 1850 PSIG.
 - SEE SUNOCO PENNSYLVANIA PIPELINE PROJECT ESRI WEBMAP FOR ACCESS ROAD ALIGNMENT.
 - SUNOCO PIPELINE, L.P.'S HORIZONTAL DIRECTIONAL DRILL INADVERTENT RETURN CONTINGENCY PLAN WILL BE IMPLEMENTED AT ALL TIMES.
 - SUNOCO PIPELINE, L.P.'S EROSION AND SEDIMENTATION CONTROL PLAN WILL BE IMPLEMENTED AT ALL TIMES.

NOTES

- ALL COORDINATES SHOWN ARE IN LATITUDE AND LONGITUDE. ALL MSL ELEVATIONS ARE NAD83
- STATIONING IS BASED ON HORIZONTAL DISTANCES.
- ROONEY ENGINEERING, INC. AND SUNOCO PIPELINE, LP ARE NOT RESPONSIBLE FOR LOCATION OF FOREIGN UTILITIES SHOWN IN PLOT PLAN OR PROFILE. THE INFORMATION SHOWN HEREON IS FURNISHED WITHOUT LIABILITY ON THE PART OF ROONEY ENGINEERING, INC. AND SUNOCO PIPELINE, LP. FOR ANY DAMAGES RESULTING FROM ERRORS OR OMISSIONS THEREIN.
- CONTRACTOR IS RESPONSIBLE FOR LOCATING ALL UTILITIES. CONTACT ONE CALL AT 811 PRIOR TO DIGGING.
- SUNOCO EMERGENCY HOTLINE NUMBER IS #1-800-786-7440.

REF. DRAWING		REVISIONS	
ES-5.28	TO	ES-5.29	DESCRIPTION
SHEET 16	TO	SHEET 16	AERIAL SITE PLAN
		EP1	REVISED PER PADEP COMMENTS RECEIVED 09-06-16
		EP1	REVISED PER PADEP COMMENTS
		EP	
		MB	ISSUED FOR BID/DESIGN CHANGE
		B	ISSUED FOR BID
		A	ISSUED FOR REVIEW
DWG NO	DWG NO	DESCRIPTION	NO.

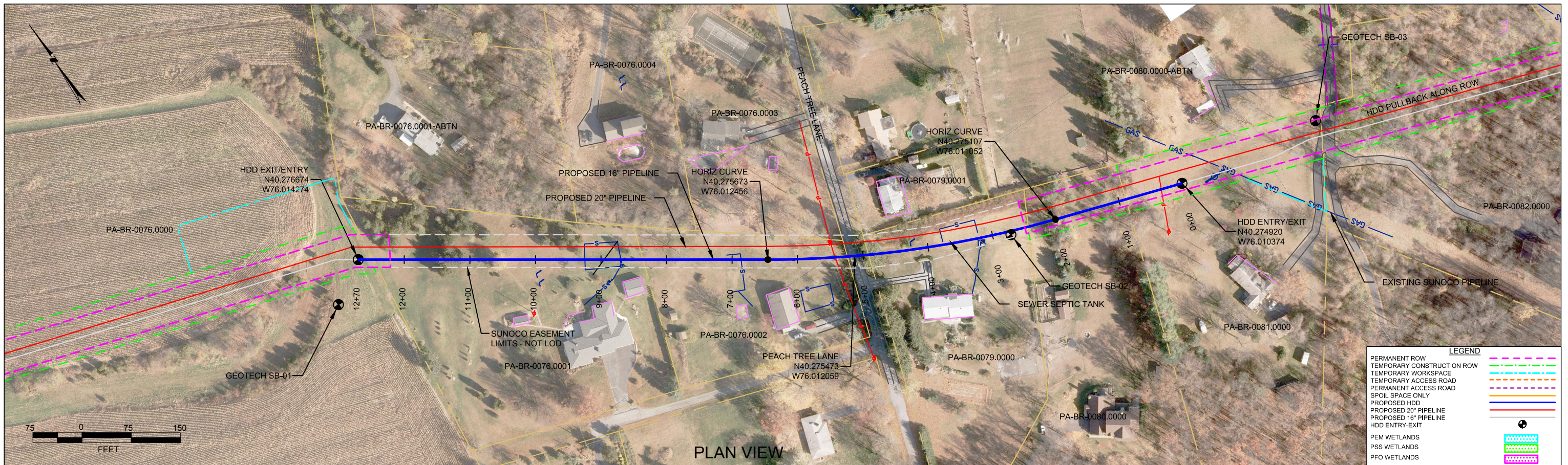
BY	DATE	CHK	DATE	APP	DATE
DLM	10/21/16	RMB	10/21/16	AAW	10/21/16
JTW	05/09/16	RMB	05/09/16	AAW	05/09/16
MRS	11/23/15	RMB	11/23/15	AAW	11/23/15
DLM	08/22/15	RMB	08/22/15	AAW	08/22/15
DLM	07/31/15	RMB	07/31/15	AAW	07/31/15
KB	04/15/15	RMB	04/15/15	AAW	04/15/15



SUNOCO PIPELINE, L.P.

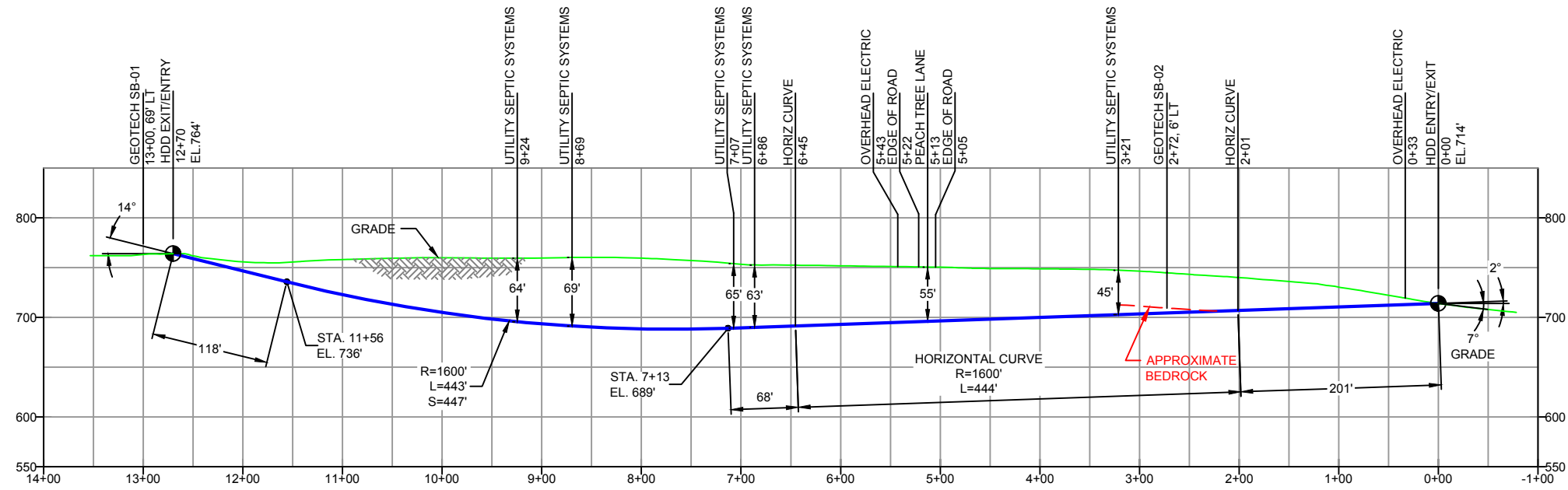
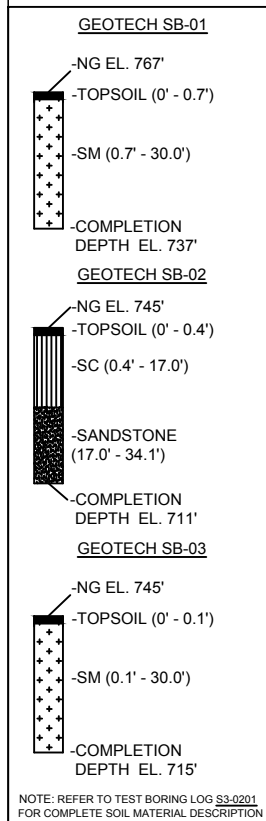
20-INCH HORIZONTAL DIRECTIONAL DRILL
PEACH TREE LANE
PENNSYLVANIA PIPELINE PROJECT

SCALE: 1"=150'
DWG. NO: PA-BR-0079.0000-RD



BERKS COUNTY, PENNSYLVANIA - CUMRU TOWNSHIP
S3-0201-16

PROFILE VIEW



DESIGN AND CONSTRUCTION:

- CONTRACTOR SHALL FIELD VERIFY DEPTH OF ALL EXISTING UTILITIES SHOWN OR NOT SHOWN ON THIS DRAWING.
- THE MINIMUM SEPARATION DISTANCE FROM EXISTING SUBSURFACE UTILITIES SHALL NOT BE LESS THAN 10 FEET AS MEASURED FROM THE OUTSIDE EDGE OF THE UTILITY TO OUTSIDE OF PROPOSED PIPELINE.
- DESIGNED IN ACCORDANCE WITH CFR 49 195 & ASME B31.4
- CROSSING PIPE SPECIFICATION:
HDD HORZ. LENGTH (L=): 1270'
HDD PIPE LENGTH (S=): 1278'
16" x 0.438" W.T., X-70, API5L, PSL2, ERW, 8FW
COATING: 14-16 MILS FBE WITH 30-35 MIL ARO (POWERCRETE R95)
- INTERNAL DESIGN PRESSURE 1480 PSIG (SEAM FACTOR 1.0, DESIGN FACTOR 0.50).
- INSTALLATION METHOD: HORIZONTAL DIRECTIONAL DRILL (HDD).
- PIPELINE WARNING MARKERS SHALL BE INSTALLED ON BOTH SIDES OF ALL ROAD, RAILWAY, AND STREAM CROSSINGS.
- CARRIER PIPE NOT ENCASED.
- PIPE / AMBIENT TEMPERATURE MUST BE NO LESS THAN 30°F DURING PULLBACK WITHOUT PRIOR WRITTEN APPROVAL FROM THE ENGINEER.
- CONDUCT 4-HOUR PRE-INSTALLATION HYDROTEST OF HDD PIPE STRING TO MINIMUM 1850 PSIG.
- SEE SUNOCO PENNSYLVANIA PIPELINE PROJECT ESRI WEBMAP FOR ACCESS ROAD ALIGNMENT.
- SUNOCO PIPELINE, L.P.'S HORIZONTAL DIRECTIONAL DRILL INADVERTENT RETURN CONTINGENCY PLAN WILL BE IMPLEMENTED AT ALL TIMES.
- SUNOCO PIPELINE, L.P.'S EROSION AND SEDIMENTATION CONTROL PLAN WILL BE IMPLEMENTED AT ALL TIMES.

- NOTES
- ALL COORDINATES SHOWN ARE IN LATITUDE AND LONGITUDE. ALL MSL ELEVATIONS ARE NAD83
 - STATIONING IS BASED ON HORIZONTAL DISTANCES.
 - ROONEY ENGINEERING, INC. AND SUNOCO PIPELINE, LP ARE NOT RESPONSIBLE FOR LOCATION OF FOREIGN UTILITIES SHOWN IN PLOT PLAN OR PROFILE. THE INFORMATION SHOWN HEREON IS FURNISHED WITHOUT LIABILITY ON THE PART OF ROONEY ENGINEERING, INC. AND SUNOCO PIPELINE, LP. FOR ANY DAMAGES RESULTING FROM ERRORS OR OMISSIONS THEREIN.
 - CONTRACTOR IS RESPONSIBLE FOR LOCATING ALL UTILITIES. CONTACT ONE CALL AT 811 PRIOR TO DIGGING.
 - SUNOCO EMERGENCY HOTLINE NUMBER IS #1-800-786-7440.

REF. DRAWING		REVISIONS	
ES-5.26	TO	ES-5.29	EROSION & SEDIMENT PLAN
SHEET 16	TO	SHEET 16	AERIAL SITE PLAN
		EP2	REVISED PER PADEP COMMENTS RECEIVED 09-06-16
		EP1	REVISED PER PADEP COMMENTS
		EP	
		B	ADDED GEOTECH INFO
		A	ISSUED FOR BID
DWG NO	DWG NO	DESCRIPTION	NO.

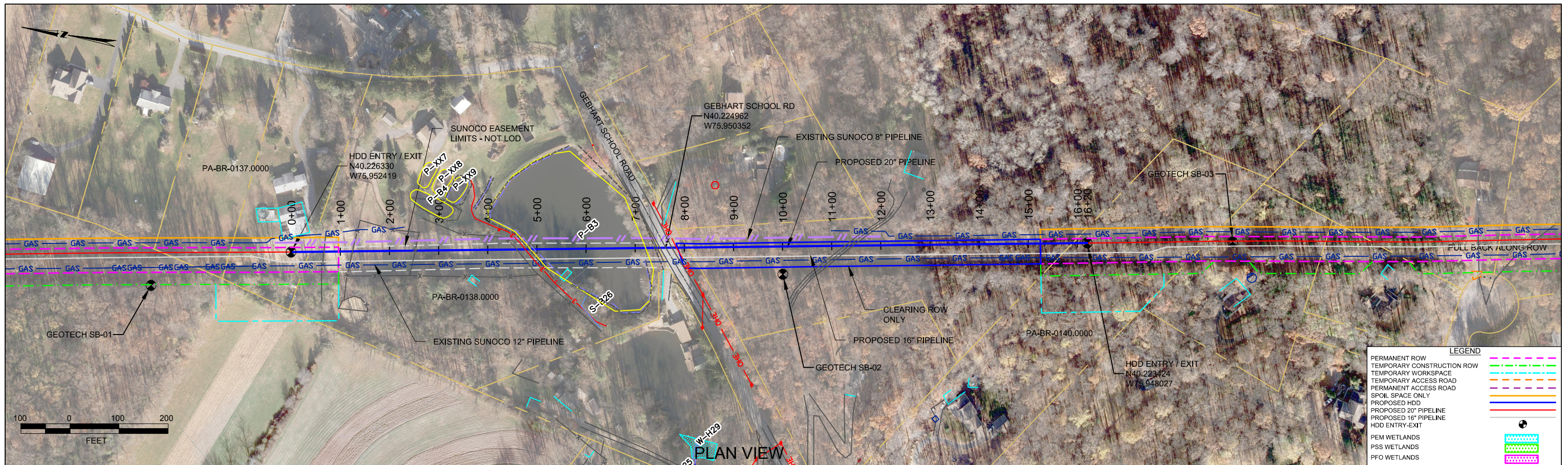
**Sunoco Logistics
Partners L.P.**

TETRA TECH ROONEY
(303) 792-5911

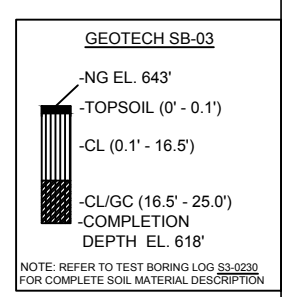
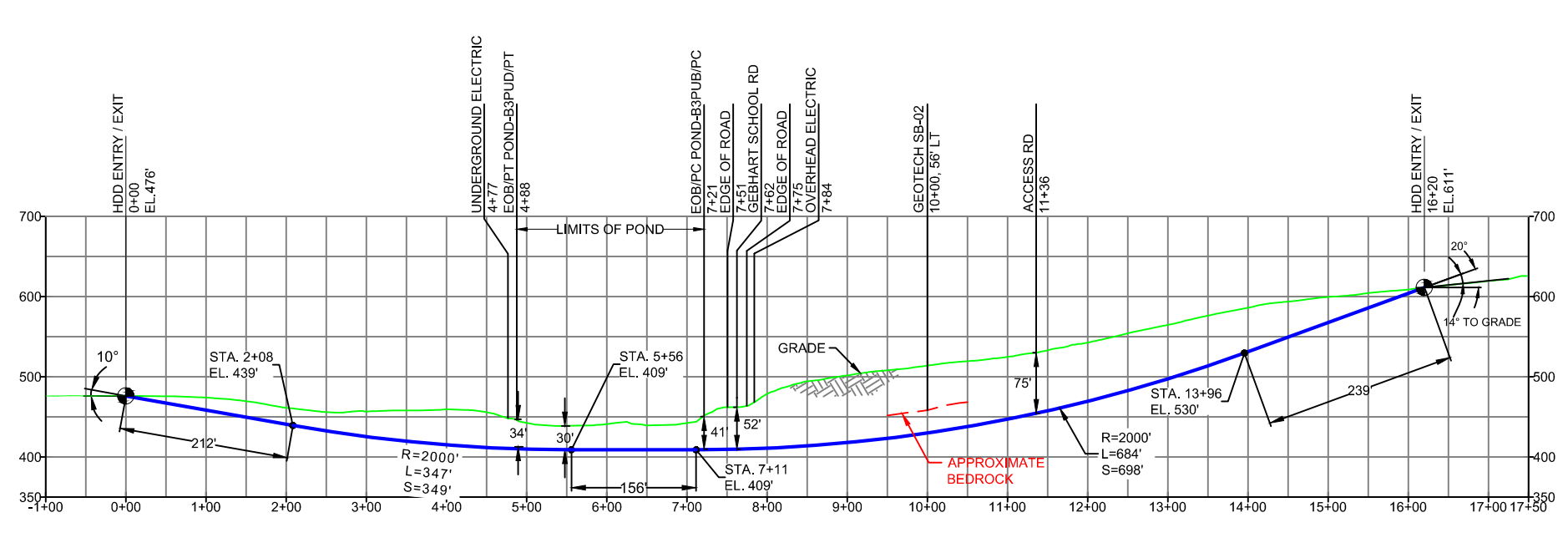
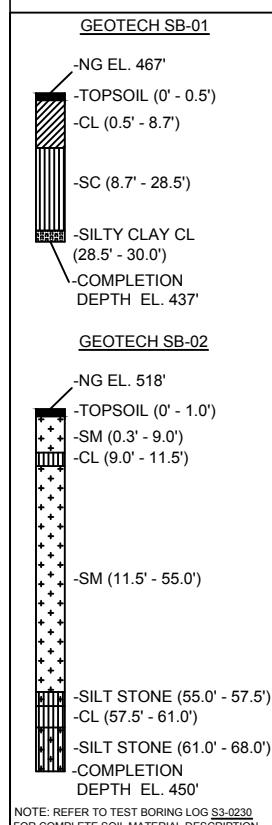
SUNOCO PIPELINE, L.P.

16-INCH HORIZONTAL DIRECTIONAL DRILL
PEACH TREE LANE
PENNSYLVANIA PIPELINE PROJECT

SCALE: 1"=150' DWG. NO: PA-BR-0079.0000-RD-16



BERKS COUNTY, PENNSYLVANIA - BRECKNOCK TOWNSHIP S3-0230



- DESIGN AND CONSTRUCTION:
- CONTRACTOR SHALL FIELD VERIFY DEPTH OF ALL EXISTING UTILITIES SHOWN OR NOT SHOWN ON THIS DRAWING.
 - THE MINIMUM SEPARATION DISTANCE FROM EXISTING SUBSURFACE UTILITIES SHALL NOT BE LESS THAN 10 FEET AS MEASURED FROM THE OUTSIDE EDGE OF THE UTILITY TO OUTSIDE OF PROPOSED PIPELINE.
 - DESIGNED IN ACCORDANCE WITH CFR 49 195 & ASME B31.4
 - CROSSING PIPE SPECIFICATION:
HDD HORZ. LENGTH (L-): 1620'
HDD PIPE LENGTH (S-): 1654'
20" x 0.456" W.T., X-65, API5L, PSL2, ERW, BFW
COATING: 14-16 MILS FBE WITH 30-35 MIL ARO (POWERCRETE R95)
 - INTERNAL DESIGN PRESSURE 1480 PSIG (SEAM FACTOR 1.0, DESIGN FACTOR 0.50).
 - INSTALLATION METHOD: HORIZONTAL DIRECTIONAL DRILL (HDD).
 - PIPELINE WARNING MARKERS SHALL BE INSTALLED ON BOTH SIDES OF ALL ROAD, RAILWAY, AND STREAM CROSSINGS.
 - CARRIER PIPE NOT ENCASED.
 - PIPE / AMBIENT TEMPERATURE MUST BE NO LESS THAN 30°F DURING PULLBACK WITHOUT PRIOR WRITTEN APPROVAL FROM THE ENGINEER.
 - CONDUCT 4-HOUR PRE-INSTALLATION HYDROTEST OF HDD PIPE STRING TO MINIMUM 1850 PSIG.
 - SEE SUNOCO PENNSYLVANIA PIPELINE PROJECT ESRI WEBMAP FOR ACCESS ROAD ALIGNMENT.
 - SUNOCO PIPELINE, L.P.'S HORIZONTAL DIRECTIONAL DRILL INADVERTENT RETURN CONTINGENCY PLAN WILL BE IMPLEMENTED AT ALL TIMES.
 - SUNOCO PIPELINE, L.P.'S EROSION AND SEDIMENTATION CONTROL PLAN WILL BE IMPLEMENTED AT ALL TIMES.

NOTES

- ALL COORDINATES SHOWN ARE IN LATITUDE AND LONGITUDE. ALL MSL ELEVATIONS ARE NAD83
- STATIONING IS BASED ON HORIZONTAL DISTANCES
- ROONEY ENGINEERING, INC. AND SUNOCO PIPELINE, LP ARE NOT RESPONSIBLE FOR LOCATION OF FOREIGN UTILITIES SHOWN IN PLOT PLAN OR PROFILE. THE INFORMATION SHOWN HEREON IS FURNISHED WITHOUT LIABILITY ON THE PART OF ROONEY ENGINEERING, INC. AND SUNOCO PIPELINE, LP. FOR ANY DAMAGES RESULTING FROM ERRORS OR OMISSIONS THEREIN.
- CONTRACTOR IS RESPONSIBLE FOR LOCATING ALL UTILITIES. CONTACT ONE CALL AT 811 PRIOR TO DIGGING.
- SUNOCO EMERGENCY HOTLINE NUMBER IS #1-800-786-7440.

REF. DRAWING	NO.	DESCRIPTION	DATE
ES-5.45 TO ES-5.47	EP2	EROSION & SEDIMENT PLAN	REVISED PER PADEP COMMENTS RECEIVED 09-06-16
SHEET 26 TO SHEET 27	EP1	AERIAL SITE PLAN	REVISED PER PADEP COMMENTS
	EP		
	C	ADDED GEOTECH INFO	
	B	ISSUED FOR BID	
	A	ISSUED FOR REVIEW	

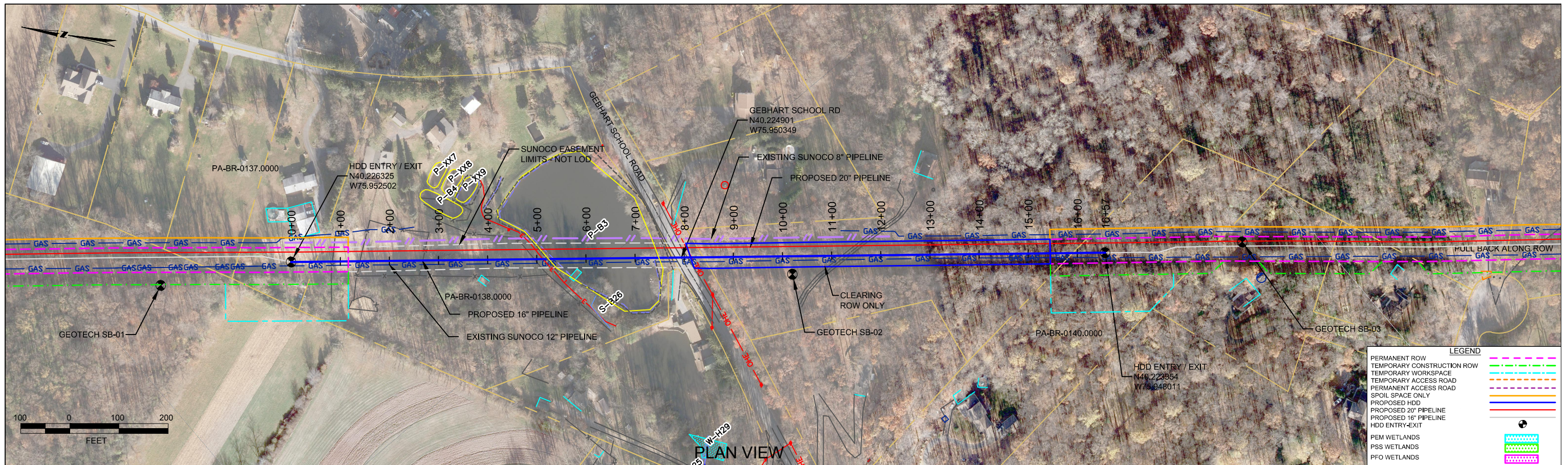
SUNOCO PIPELINE, L.P.

20-INCH HORIZONTAL DIRECTIONAL DRILL
GEBHART SCHOOL ROAD
PENNSYLVANIA PIPELINE PROJECT

(303) 792-5911

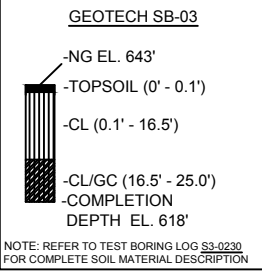
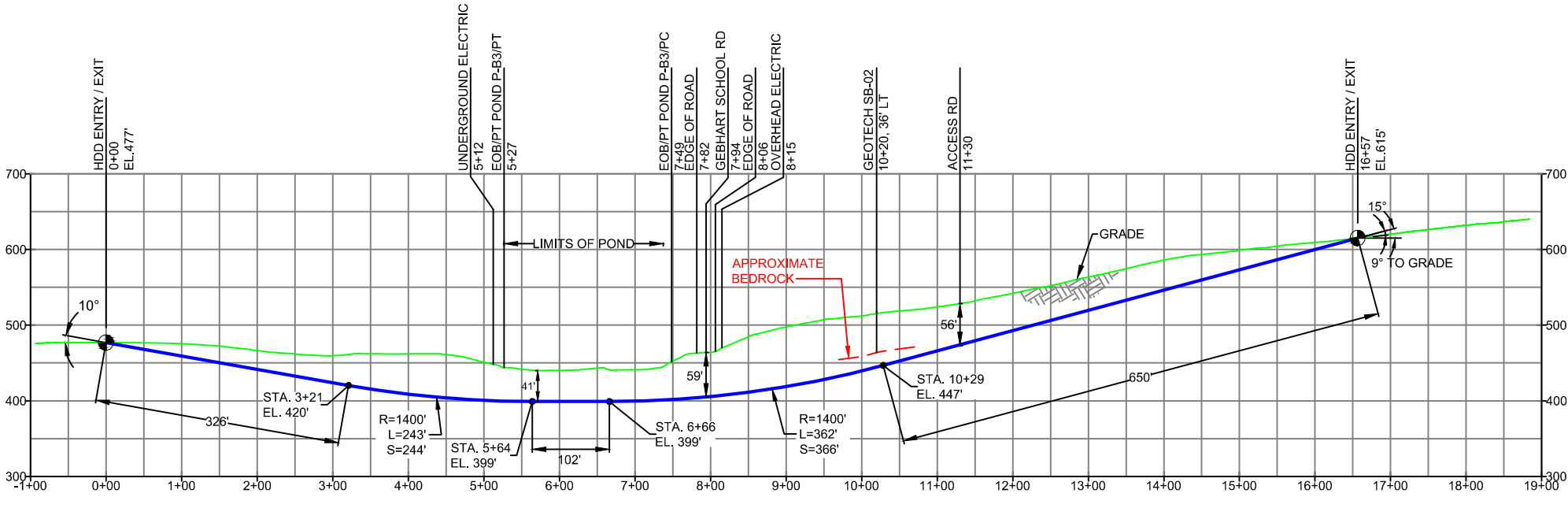
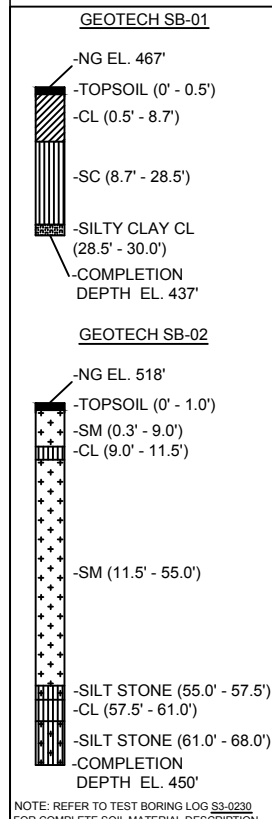
SCALE: 1"=200'

DWG. NO. PA-BR-0138.0001-RD



PLAN VIEW

BERKS COUNTY, PENNSYLVANIA - BRECKNOCK TOWNSHIP
S3-0230-16



- DESIGN AND CONSTRUCTION:
- CONTRACTOR SHALL FIELD VERIFY DEPTH OF ALL EXISTING UTILITIES SHOWN OR NOT SHOWN ON THIS DRAWING.
 - THE MINIMUM SEPARATION DISTANCE FROM EXISTING SUBSURFACE UTILITIES SHALL NOT BE LESS THAN 10 FEET AS MEASURED FROM THE OUTSIDE EDGE OF THE UTILITY TO OUTSIDE OF PROPOSED PIPELINE.
 - DESIGNED IN ACCORDANCE WITH CFR 49 195 & ASME B31.4
 - CROSSING PIPE SPECIFICATION:
HDD HORZ. LENGTH (L-): 1657'
HDD PIPE LENGTH (S-): 1688'
16" x 0.438" W.T., X-70, API5L, PSL2, ERW, BFW
COATING: 14-16 MILS FBE WITH 30-35 MIL ARO (POWERCRETE R95)
 - INTERNAL DESIGN PRESSURE 1480 PSIG (SEAM FACTOR 1.0, DESIGN FACTOR 0.50).
 - INSTALLATION METHOD: HORIZONTAL DIRECTIONAL DRILL (HDD).
 - PIPELINE WARNING MARKERS SHALL BE INSTALLED ON BOTH SIDES OF ALL ROAD, RAILWAY, AND STREAM CROSSINGS.
 - CARRIER PIPE NOT ENCASED.
 - PIPE / AMBIENT TEMPERATURE MUST BE NO LESS THAN 30°F DURING PULLBACK WITHOUT PRIOR WRITTEN APPROVAL FROM THE ENGINEER.
 - CONDUCT 4-HOUR PRE-INSTALLATION HYDROTEST OF HDD PIPE STRING TO MINIMUM 1850 PSIG.
 - SEE SUNOCO PENNSYLVANIA PIPELINE PROJECT ESRI WEBMAP FOR ACCESS ROAD ALIGNMENT.
 - SUNOCO PIPELINE, L.P.'S HORIZONTAL DIRECTIONAL DRILL INADVERTENT RETURN CONTINGENCY PLAN WILL BE IMPLEMENTED AT ALL TIMES.
 - SUNOCO PIPELINE, L.P.'S EROSION AND SEDIMENTATION CONTROL PLAN WILL BE IMPLEMENTED AT ALL TIMES.

NOTES

- ALL COORDINATES SHOWN ARE IN LATITUDE AND LONGITUDE. ALL MSL ELEVATIONS ARE NAD83
- STATIONING IS BASED ON HORIZONTAL DISTANCES
- ROONEY ENGINEERING, INC. AND SUNOCO PIPELINE, LP ARE NOT RESPONSIBLE FOR LOCATION OF FOREIGN UTILITIES SHOWN IN PLOT PLAN OR PROFILE. THE INFORMATION SHOWN HEREON IS FURNISHED WITHOUT LIABILITY ON THE PART OF ROONEY ENGINEERING, INC. AND SUNOCO PIPELINE, LP, FOR ANY DAMAGES RESULTING FROM ERRORS OR OMISSIONS THEREIN.
- CONTRACTOR IS RESPONSIBLE FOR LOCATING ALL UTILITIES. CONTACT ONE CALL AT 811 PRIOR TO DIGGING.
- SUNOCO EMERGENCY HOTLINE NUMBER IS #1-800-786-7440.

REF. DRAWING	NO.	DESCRIPTION	NO.	DESCRIPTION
ES-5.45	TO	ES-5.47	EROSION & SEDIMENT PLAN	
SHEET 26	TO	SHEET 27	AERIAL SITE PLAN	EP2 REVISED PER PADEP COMMENTS RECEIVED 09-06-16
				EP1 REVISED PER PADEP COMMENTS
				EP
				B ADDED GEOTECH INFO
				A ISSUED FOR BID

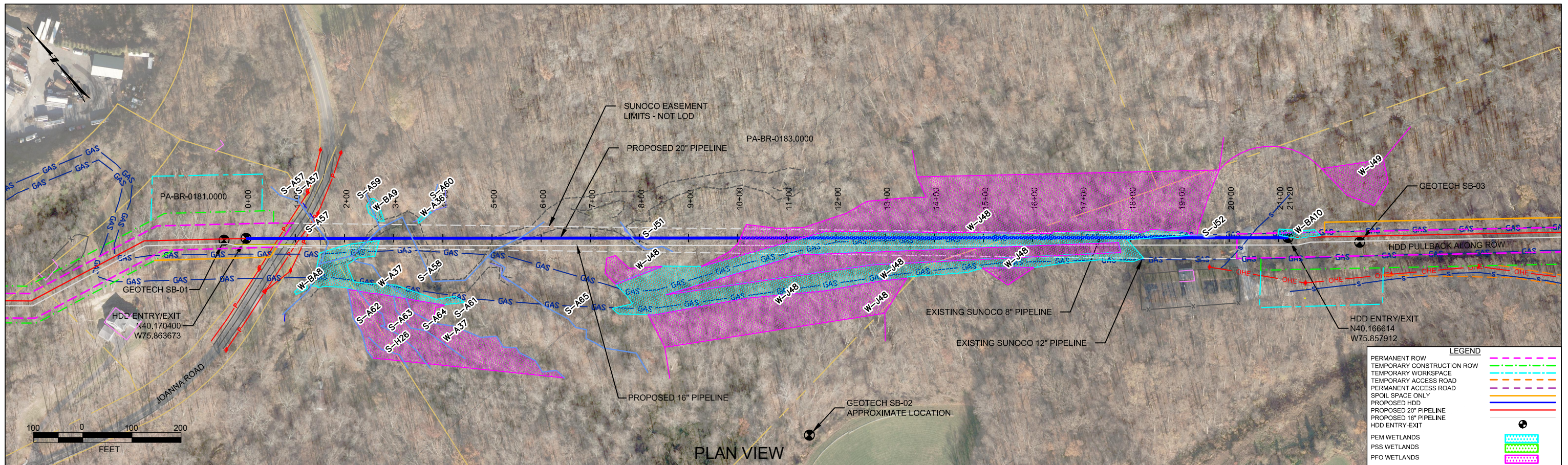
Sunoco Logistics Partners L.P.

TETRA TECH ROONEY
(303) 792-5911

SUNOCO PIPELINE, L.P.

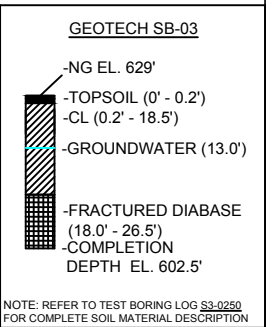
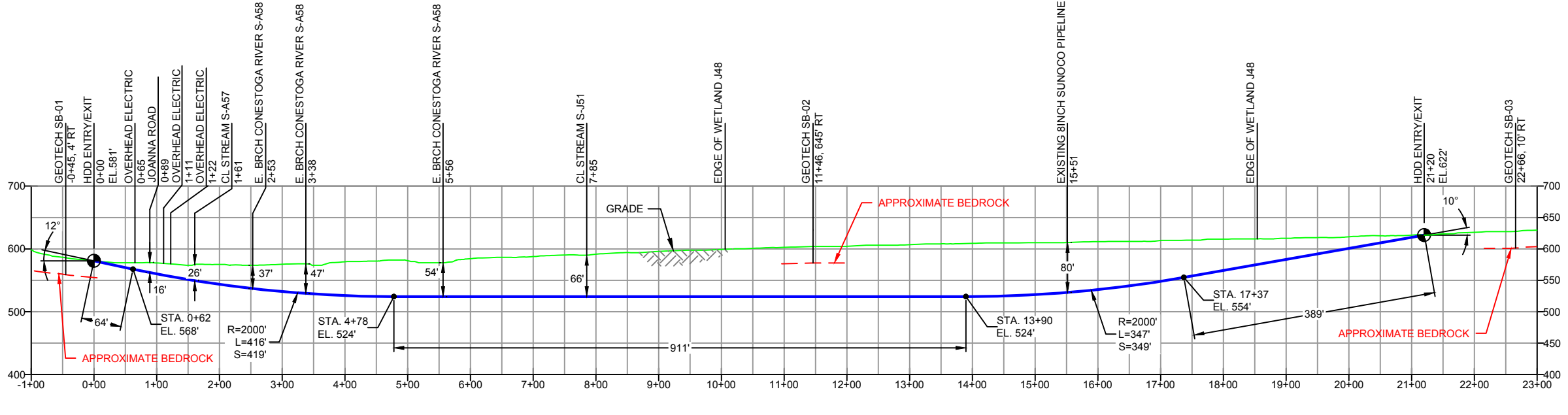
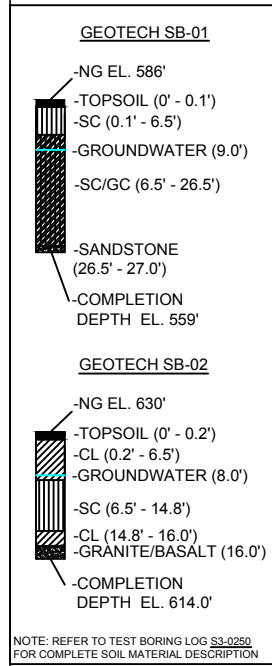
16-INCH HORIZONTAL DIRECTIONAL DRILL
GEBHART SCHOOL ROAD
PENNSYLVANIA PIPELINE PROJECT

SCALE: 1"=200' DWG. NO: PA-BR-0138.0001-RD-16



PLAN VIEW

BERKS COUNTY, PENNSYLVANIA - CAERNARVON TOWNSHIP
S3-0250



- DESIGN AND CONSTRUCTION:
- CONTRACTOR SHALL FIELD VERIFY DEPTH OF ALL EXISTING UTILITIES SHOWN OR NOT SHOWN ON THIS DRAWING.
 - THE MINIMUM SEPARATION DISTANCE FROM EXISTING SUBSURFACE UTILITIES SHALL NOT BE LESS THAN 10 FEET AS MEASURED FROM THE OUTSIDE EDGE OF THE UTILITY TO OUTSIDE OF PROPOSED PIPELINE.
 - DESIGNED IN ACCORDANCE WITH CFR 49 195 & ASME B31.4
 - CROSSING PIPE SPECIFICATION:
HDD HORZ. LENGTH (L-): 2120'
HDD PIPE LENGTH (S-): 2132'
20" x 0.456" W.T., X-65, API5L, PSL2, ERW, BFW
COATING: 14-16 MILS FBE WITH 30-35 MIL ARO (POWERCRETE R95)
 - INTERNAL DESIGN PRESSURE 1480 PSIG (SEAM FACTOR 1.0, DESIGN FACTOR 0.50).
 - INSTALLATION METHOD: HORIZONTAL DIRECTIONAL DRILL (HDD).
 - PIPELINE WARNING MARKERS SHALL BE INSTALLED ON BOTH SIDES OF ALL ROAD, RAILWAY, AND STREAM CROSSINGS.
 - CARRIER PIPE NOT ENCASED.
 - PIPE / AMBIENT TEMPERATURE MUST BE NO LESS THAN 30°F DURING PULLBACK WITHOUT PRIOR WRITTEN APPROVAL FROM THE ENGINEER.
 - CONDUCT 4-HOUR PRE-INSTALLATION HYDROTEST OF HDD PIPE STRING TO MINIMUM 1850 PSIG.
 - SEE SUNOCO PENNSYLVANIA PIPELINE PROJECT ESRI WEBMAP FOR ACCESS ROAD ALIGNMENT.
 - SUNOCO PIPELINE, L.P.'S HORIZONTAL DIRECTIONAL DRILL INADVERTENT RETURN CONTINGENCY PLAN WILL BE IMPLEMENTED AT ALL TIMES.
 - SUNOCO PIPELINE, L.P.'S EROSION AND SEDIMENTATION CONTROL PLAN WILL BE IMPLEMENTED AT ALL TIMES.

NOTES

- ALL COORDINATES SHOWN ARE IN LATITUDE AND LONGITUDE. ALL MSL ELEVATIONS ARE NAD83
- STATIONING IS BASED ON HORIZONTAL DISTANCES
- ROONEY ENGINEERING, INC. AND SUNOCO PIPELINE, LP ARE NOT RESPONSIBLE FOR LOCATION OF FOREIGN UTILITIES SHOWN IN PLOT PLAN OR PROFILE. THE INFORMATION SHOWN HEREON IS FURNISHED WITHOUT LIABILITY ON THE PART OF ROONEY ENGINEERING, INC. AND SUNOCO PIPELINE, LP. FOR ANY DAMAGES RESULTING FROM ERRORS OR OMISSIONS THEREIN.
- CONTRACTOR IS RESPONSIBLE FOR LOCATING ALL UTILITIES. CONTACT ONE CALL AT 811 PRIOR TO DIGGING.
- SUNOCO EMERGENCY HOTLINE NUMBER IS #1-800-786-7440.

REF. DRAWING	NO.	DESCRIPTION	DATE
ES-5.68	TO	EROSION & SEDIMENT PLAN	EP2
SHEET 40	TO	AERIAL SITE PLAN	EP1
			EP
			C
			B
			A

REVISIONS

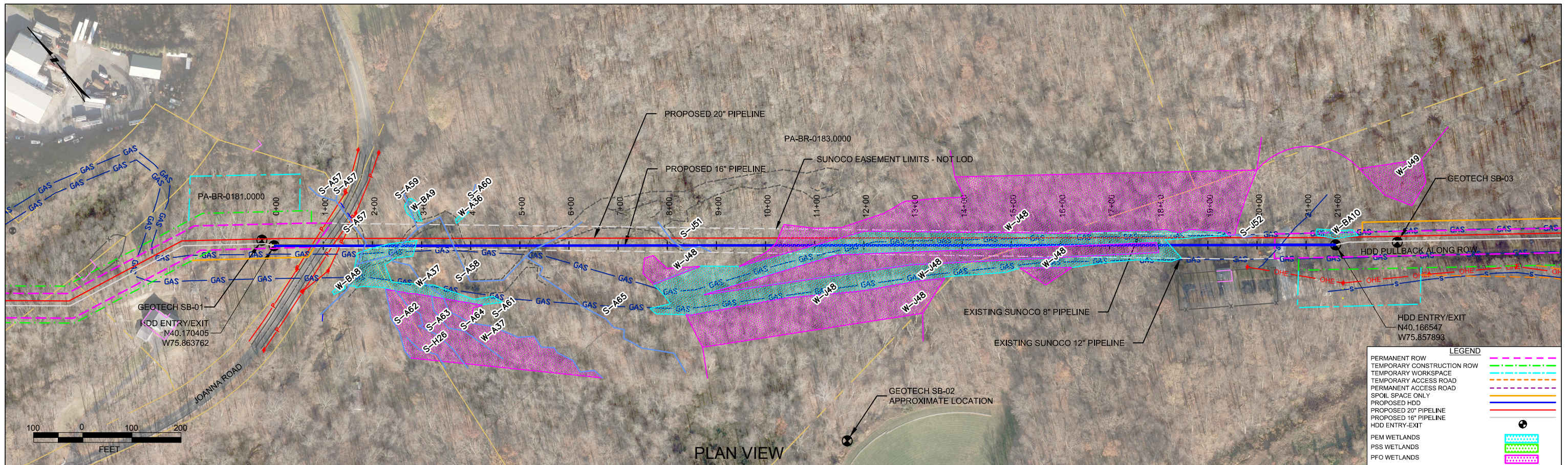
BY	DATE	CHK	DATE	APP	DATE
DLM	10/21/16	RMB	10/21/16	AAW	10/21/16
JTW	05/18/16	RMB	05/18/16	AAW	05/18/16
MRS	02/26/16	RMB	02/26/16	AAW	02/26/16
MRS	09/28/15	RMB	09/28/15	AAW	09/28/15
MRS	07/31/15	RMB	07/31/15	AAW	07/31/15
JVA	04/15/15	RMB	04/15/15	AAW	04/15/15



SUNOCO PIPELINE, L.P.

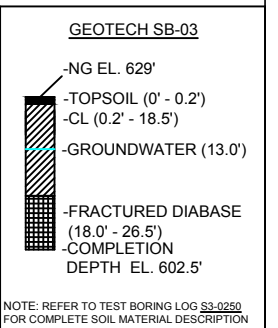
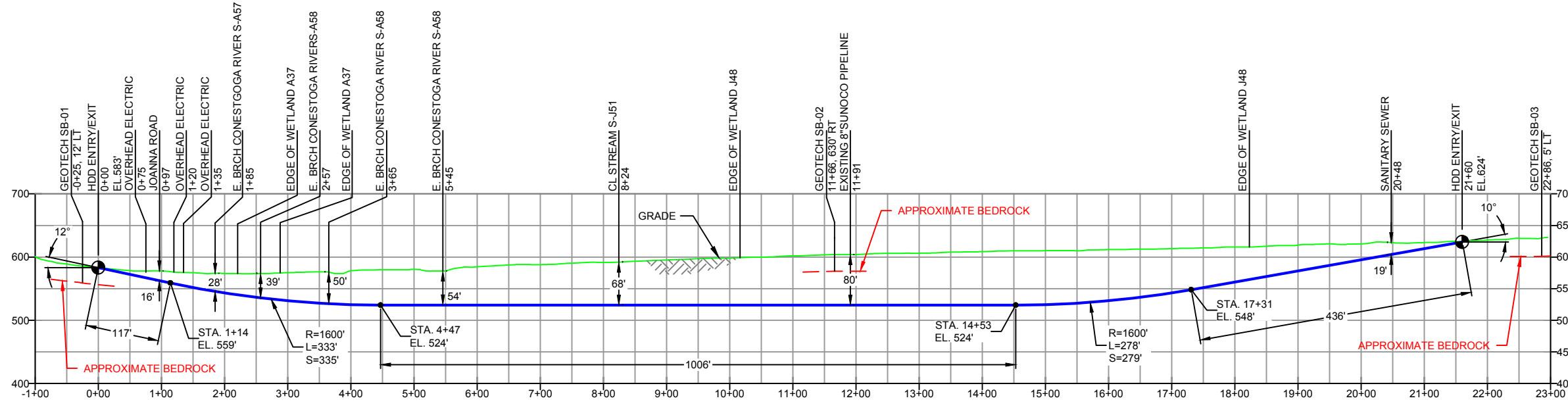
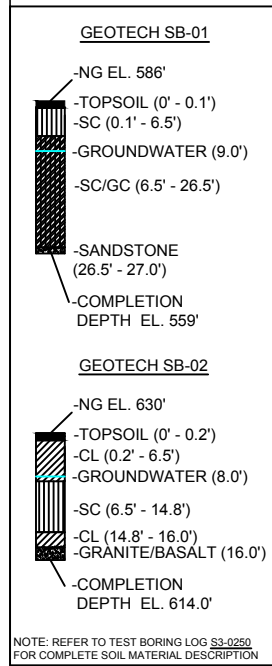
20-INCH HORIZONTAL DIRECTIONAL DRILL
JOANNA ROAD
PENNSYLVANIA PIPELINE PROJECT

SCALE: 1"=200' DWG. NO. PA-BR-0181.0000-RD



PLAN VIEW

BERKS COUNTY, PENNSYLVANIA - CAERNARVON TOWNSHIP
S3-0250-16



- DESIGN AND CONSTRUCTION:
- CONTRACTOR SHALL FIELD VERIFY DEPTH OF ALL EXISTING UTILITIES SHOWN OR NOT SHOWN ON THIS DRAWING.
 - THE MINIMUM SEPARATION DISTANCE FROM EXISTING SUBSURFACE UTILITIES SHALL NOT BE LESS THAN 10 FEET AS MEASURED FROM THE OUTSIDE EDGE OF THE UTILITY TO OUTSIDE OF PROPOSED PIPELINE.
 - DESIGNED IN ACCORDANCE WITH CFR 49 195 & ASME B31.4
 - CROSSING PIPE SPECIFICATION:
HDD HORZ. LENGTH (L-): 2160'
HDD PIPE LENGTH (S-): 2173'
16" x 0.438" W.T., X-70, API 5L, PSL2, ERW, BFW
COATING: 14-16 MILS FBE WITH 30-35 MIL ARO (POWERCRETE R95)
 - INTERNAL DESIGN PRESSURE 1480 PSIG (SEAM FACTOR 1.0, DESIGN FACTOR 0.50).
 - INSTALLATION METHOD: HORIZONTAL DIRECTIONAL DRILL (HDD).
 - PIPELINE WARNING MARKERS SHALL BE INSTALLED ON BOTH SIDES OF ALL ROAD, RAILWAY, AND STREAM CROSSINGS.
 - CARRIER PIPE NOT ENCASED.
 - PIPE / AMBIENT TEMPERATURE MUST BE NO LESS THAN 30°F DURING PULLBACK WITHOUT PRIOR WRITTEN APPROVAL FROM THE ENGINEER.
 - CONDUCT 4-HOUR PRE-INSTALLATION HYDROTEST OF HDD PIPE STRING TO MINIMUM 1850 PSIG.
 - SEE SUNOCO PENNSYLVANIA PIPELINE PROJECT ESRI WEBMAP FOR ACCESS ROAD ALIGNMENT.
 - SUNOCO PIPELINE, L.P.'S HORIZONTAL DIRECTIONAL DRILL INADVERTENT RETURN CONTINGENCY PLAN WILL BE IMPLEMENTED AT ALL TIMES.
 - SUNOCO PIPELINE, L.P.'S EROSION AND SEDIMENTATION CONTROL PLAN WILL BE IMPLEMENTED AT ALL TIMES.

NOTES

- ALL COORDINATES SHOWN ARE IN LATITUDE AND LONGITUDE. ALL MSL ELEVATIONS ARE NAD83
- STATIONING IS BASED ON HORIZONTAL DISTANCES
- ROONEY ENGINEERING, INC. AND SUNOCO PIPELINE, LP ARE NOT RESPONSIBLE FOR LOCATION OF FOREIGN UTILITIES SHOWN IN PLOT PLAN OR PROFILE. THE INFORMATION SHOWN HEREON IS FURNISHED WITHOUT LIABILITY ON THE PART OF ROONEY ENGINEERING, INC. AND SUNOCO PIPELINE, LP. FOR ANY DAMAGES RESULTING FROM ERRORS OR OMISSIONS THEREIN.
- CONTRACTOR IS RESPONSIBLE FOR LOCATING ALL UTILITIES. CONTACT ONE CALL AT 811 PRIOR TO DIGGING.
- SUNOCO EMERGENCY HOTLINE NUMBER IS #1-800-786-7440.

REF. DRAWING	NO.	DESCRIPTION	NO.	DESCRIPTION
EP-5.68	TO	ES-5.69	EROSION & SEDIMENT PLAN	
SHEET 40	TO	SHEET 41	AERIAL SITE PLAN	EP2 REVISED PER PADEP COMMENTS RECEIVED 09-06-16
				EP1 REVISED PER PADEP COMMENTS
				EP
				B ADDED GEOTECH INFO
				A ISSUED FOR BID

Sunoco Logistics Partners L.P.

TETRA TECH ROONEY
(303) 792-5911

SUNOCO PIPELINE, L.P.

16-INCH HORIZONTAL DIRECTIONAL DRILL
JOANNA ROAD
PENNSYLVANIA PIPELINE PROJECT

SCALE: 1"=200' DWG. NO. PA-BR-0181.0000-RD-16